

**TRACT 34916 - Portion of Block 20, Chandeleur Sound Area, St. Bernard Parish, Louisiana**

All of the lands now or formerly constituting the beds and bottoms of all water bodies of every nature and description, and all islands and other lands formed by accretion, where allowed by law, or by reliction, and excepting tax adjudicated lands, belonging to the State of Louisiana and not presently under mineral lease on September 11, 2002, situated in St. Bernard Parish, Louisiana, and more particularly described as follows: Beginning at the Southeast corner of Block 20, Chandeleur Sound Area, having Coordinates of X = 2,664,850.00 and Y = 440,330.00; thence West 7,375.00 feet on the South line of said Block 20 to a point having Coordinates of X = 2,657,475.00 and Y = 440,330.00; thence North 7,375.00 feet to a point having Coordinates of X = 2,657,475.00 and Y = 447,705.00; thence East 7,375.00 feet to a point on the East line of said Block 20 having Coordinates of X = 2,664,850.00 and Y = 447,705.00; thence South 7,375.00 feet to the point of beginning, containing approximately **1,038 acres**, all as more particularly outlined on a plat on file in the Office of Mineral Resources, Department of Natural Resources, as provided by the applicant. All bearings, distances and coordinates are based on Louisiana Coordinate System of 1927, (North or South Zone), where applicable.

NOTE: The above description of the Tract nominated for lease has been provided and corrected, where required, exclusively by the nomination party. Any mineral lease selected from this Tract and awarded by the Louisiana State Mineral Board shall be without warranty of any kind, either express, implied, or statutory, including, but not limited to, the implied warranties of merchantability and fitness for a particular purpose. Should the mineral lease awarded by the Louisiana State Mineral Board be subsequently modified, cancelled or abrogated due to the existence of conflicting leases, operating agreements, private claims or other future obligations or conditions which may affect all or any portion of the leased Tract, it shall not relieve the Lessee of the obligation to pay any bonus due thereon to the Louisiana State Mineral Board, nor shall the Louisiana State Mineral Board be obligated to refund any consideration paid by the Lessor prior to such modification, cancellation, or abrogation, including, but not limited to, bonuses, rentals and royalties.

NOTE: The Office of Mineral Resources will require a minimum bonus of \$230 per acre and a minimum bonus of 23%.

NOTE: The Department of Wildlife and Fisheries has designated certain areas in the coastal waters of the State of Louisiana as Oyster Seed Bed Areas. The exact location of those Seed Bed Areas must be obtained from the Department of Wildlife and Fisheries and any work done under a mineral lease from the State of Louisiana may necessarily be conducted in conformity with the rules and regulations promulgated by the said Department of Wildlife and Fisheries for Oyster Seed Bed Areas.

NOTE: The State of Louisiana does hereby reserve, and this lease shall be subject to, the imprescriptible right of surface use in the nature of a

servitude in favor of the Department of Natural Resources, including its Offices and Commissions, for the sole purpose of implementing, constructing, servicing and maintaining approved coastal zone management and/or restoration projects. Utilization of any and all rights derived under this lease by the mineral lessee, its agents, successors or assigns, shall not interfere with nor hinder the reasonable surface use by the Department of Natural Resources, its Offices or Commissions, as herein above reserved.

Applicant: Houston McNutt

Bidder	Cash Payment	Price / Acre	Rental	Oil	Gas	Other

Bik. 2

EXHIBIT B  
Bik. 3

<sup>343</sup>  
Bik. 4

Bik. 20

Bik. 21

Bik. 19

TR 34916  
1,038 ± ACS.  
SEPT., 2002

P. O. B.  
X=2, 664, 850. 00  
Y= 440, 330. 00

SL 17394

Bik. 24

Bik. 25

Bik. 26

CHANDELEUR SOUND AREA  
GULF OF MEXICO

St. Bernard Parish, Louisiana

4000' 0' 4000'

NAD 27  
LAMBERT LA. SOUTH ZONE

**TRACT 34917 - Portion of Block 25, Chandeleur Sound Area, St. Bernard Parish, Louisiana**

All of the lands now or formerly constituting the beds and bottoms of all water bodies of every nature and description, and all islands and other lands formed by accretion, where allowed by law, or by reliction, and excepting tax adjudicated lands, belonging to the State of Louisiana and not presently under mineral lease on September 11, 2002, situated in St. Bernard Parish, Louisiana, and more particularly described as follows: Beginning at the Northeast corner of Block 25, Chandeleur Sound Area, having Coordinates of X = 2,664,850.00 and Y = 440,330.00; thence South 14,750.00 feet on the East line of said Block 25 to its Southeast corner having Coordinates of X = 2,664,850.00 and Y = 425,580.00; thence West 7,375.00 feet on the South line of said Block 25 to a point having Coordinates of X = 2,657,475.00 and Y = 425,580.00; thence North 14,750.00 feet to a point on the North line of said Block 25 having Coordinates of X = 2,657,475.00 and Y = 440,330.00; thence East 7,375.00 feet to the point of beginning, containing approximately **2,304.00 acres**, all as more particularly outlined on a plat on file in the Office of Mineral Resources, Department of Natural Resources, as provided by the applicant. All bearings, distances and coordinates are based on Louisiana Coordinate System of 1927, (North or South Zone), where applicable.

NOTE: The above description of the Tract nominated for lease has been provided and corrected, where required, exclusively by the nomination party. Any mineral lease selected from this Tract and awarded by the Louisiana State Mineral Board shall be without warranty of any kind, either express, implied, or statutory, including, but not limited to, the implied warranties of merchantability and fitness for a particular purpose. Should the mineral lease awarded by the Louisiana State Mineral Board be subsequently modified, cancelled or abrogated due to the existence of conflicting leases, operating agreements, private claims or other future obligations or conditions which may affect all or any portion of the leased Tract, it shall not relieve the Lessee of the obligation to pay any bonus due thereon to the Louisiana State Mineral Board, nor shall the Louisiana State Mineral Board be obligated to refund any consideration paid by the Lessor prior to such modification, cancellation, or abrogation, including, but not limited to, bonuses, rentals and royalties.

NOTE: The Office of Mineral Resources will require a minimum bonus of \$230 per acre and a minimum royalty of 23%.

NOTE: The Department of Wildlife and Fisheries has designated certain areas in the coastal waters of the State of Louisiana as Oyster Seed Bed Areas. The exact location of those Seed Bed Areas must be obtained from the Department of Wildlife and Fisheries and any work done under a mineral lease from the State of Louisiana may necessarily be conducted in conformity with the rules and regulations promulgated by the said Department of Wildlife and Fisheries for Oyster Seed Bed Areas.

NOTE: The State of Louisiana does hereby reserve, and this lease shall be subject to, the imprescriptible right of surface use in the nature of a servitude in favor of the Department of Natural Resources, including its Offices and Commissions, for the sole purpose of implementing, constructing, servicing and maintaining approved coastal zone management and/or restoration projects. Utilization of any and all rights derived under this lease by the mineral lessee, its agents, successors or assigns, shall not interfere with nor hinder the reasonable surface use by the Department of Natural Resources, its Offices or Commissions, as herein above reserved.

Applicant: Houston McNutt

Bidder	Cash Payment	Price / Acre	Rental	Oil	Gas	Other

Bik. 21

EXHIBIT B

Bik. 20

<sup>346</sup>  
Bik. 19

P. O. B.  
X=2,664,850.00  
Y= 440,330.00

SL 17394

TR 34917  
2,304.00 ± ACS.  
SEPT., 2002

Bik. 26

Bik. 25

Bik. 24

Bik. 43

Bik. 42

Bik. 41

CHANDELEUR SOUND AREA  
GULF OF MEXICO

St. Bernard Parish, Louisiana

4000' 0' 4000'

NAD 27 LAMBERT LA. SOUTH ZONE

**TRACT 34918 - Portion of Block 42, Chandeleur Sound Area, St. Bernard Parish, Louisiana**

All of the lands now or formerly constituting the beds and bottoms of all water bodies of every nature and description, and all islands and other lands formed by accretion, where allowed by law, or by reliction, and excepting tax adjudicated lands, belonging to the State of Louisiana and not presently under mineral lease on September 11, 2002, situated in St. Bernard Parish, Louisiana, and more particularly described as follows: Beginning at a point being the Northeast corner of Block 42, Chandeleur Sound Area, having Coordinates of X = 2,664,850.00 and Y = 425,580.00; thence South 14,750.00 feet to a point having Coordinates of X = 2,664,850.00 and Y = 410,830.00; thence West 7,375.00 feet to a point having Coordinates of X = 2,657,475.00 and Y = 410,830.00; thence North 14,750.00 feet to a point having Coordinates of X = 2,657,475.00 and Y = 425,580.00; thence East 7,375.00 feet to the point of beginning, containing approximately **2,497.27 acres**, all as more particularly outlined on a plat on file in the Office of Mineral Resources, Department of Natural Resources, as provided by the applicant. All bearings, distances and coordinates are based on Louisiana Coordinate System of 1927, (North or South Zone), where applicable.

NOTE: The above description of the Tract nominated for lease has been provided and corrected, where required, exclusively by the nomination party. Any mineral lease selected from this Tract and awarded by the Louisiana State Mineral Board shall be without warranty of any kind, either express, implied, or statutory, including, but not limited to, the implied warranties of merchantability and fitness for a particular purpose. Should the mineral lease awarded by the Louisiana State Mineral Board be subsequently modified, cancelled or abrogated due to the existence of conflicting leases, operating agreements, private claims or other future obligations or conditions which may affect all or any portion of the leased Tract, it shall not relieve the Lessee of the obligation to pay any bonus due thereon to the Louisiana State Mineral Board, nor shall the Louisiana State Mineral Board be obligated to refund any consideration paid by the Lessor prior to such modification, cancellation, or abrogation, including, but not limited to, bonuses, rentals and royalties.

NOTE: The Office of Mineral Resources will require a minimum bonus of \$190 per acre and a minimum bonus of 22%.

NOTE: The Department of Wildlife and Fisheries has designated certain areas in the coastal waters of the State of Louisiana as Oyster Seed Bed Areas. The exact location of those Seed Bed Areas must be obtained from the Department of Wildlife and Fisheries and any work done under a mineral lease from the State of Louisiana may necessarily be conducted in conformity with the rules and regulations promulgated by the said Department of Wildlife and Fisheries for Oyster Seed Bed Areas.

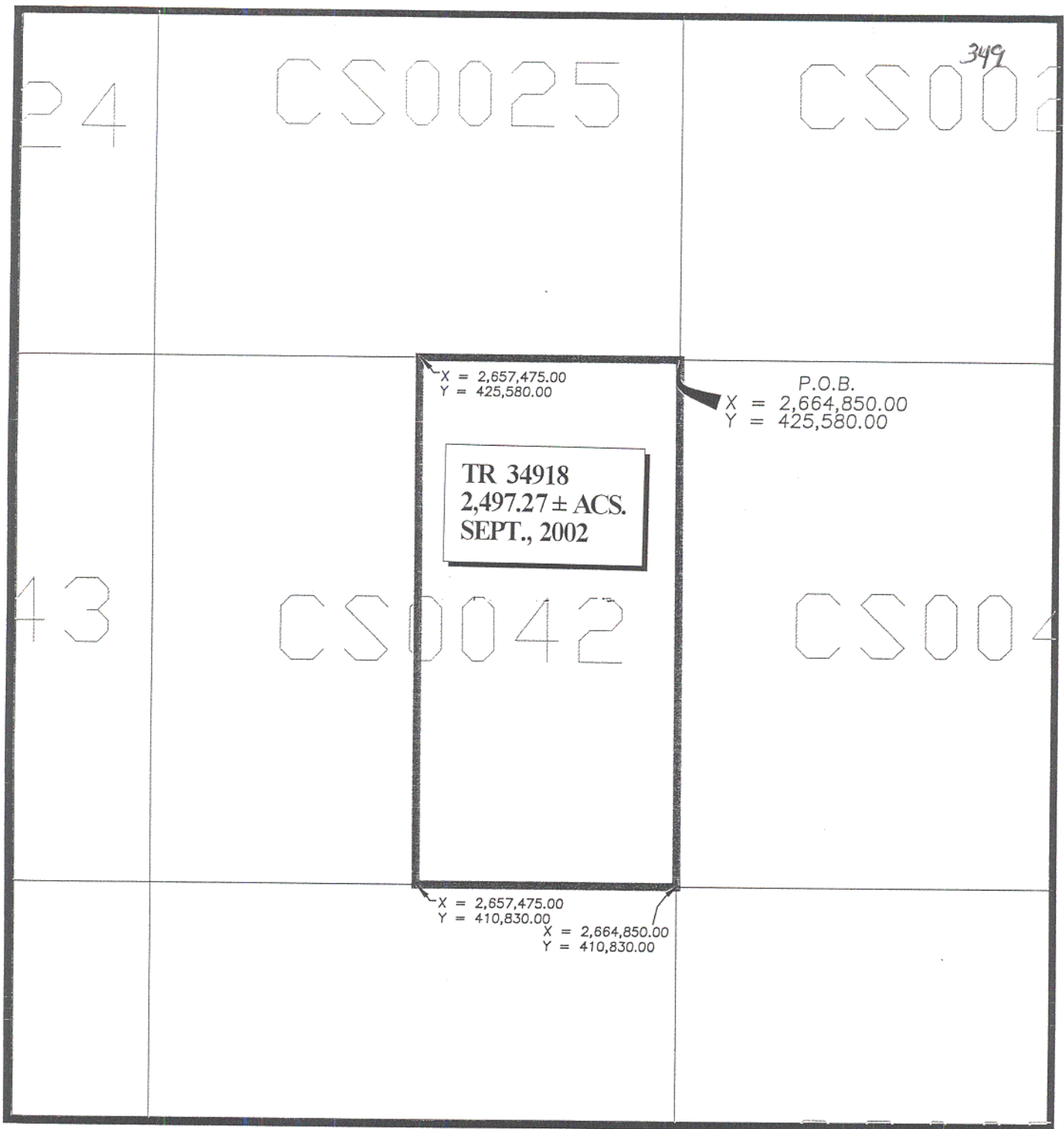
NOTE: The State of Louisiana does hereby reserve, and this lease shall be subject to, the imprescriptible right of surface use in the nature of a

servitude in favor of the Department of Natural Resources, including its Offices and Commissions, for the sole purpose of implementing, constructing, servicing and maintaining approved coastal zone management and/or restoration projects. Utilization of any and all rights derived under this lease by the mineral lessee, its agents, successors or assigns, shall not interfere with nor hinder the reasonable surface use by the Department of Natural Resources, its Offices or Commissions, as herein above reserved.

Applicant: Houston McNutt

Bidder	Cash Payment	Price / Acre	Rental	Oil	Gas	Other





CHANDELEUR SOUND AREA  
ST. BERNARD PARISH, LOUISIANA

SCALE: 1" = 4000'

**TRACT 34919 - Portion of Block 51, Chandeleur Sound Area, St. Bernard Parish, Louisiana**

All of the lands now or formerly constituting the beds and bottoms of all water bodies of every nature and description, and all islands and other lands formed by accretion, where allowed by law, or by reliction, and excepting tax adjudicated lands, belonging to the State of Louisiana and not presently under mineral lease on September 11, 2002, situated in St. Bernard Parish, Louisiana, and more particularly described as follows: Beginning at a point being the Northeast corner of Block 51, Chandeleur Sound Area, having Coordinates of X = 2,664,850.00 and Y = 410,830.00; thence South 14,750.00 feet to a point having Coordinates of X = 2,664,850.00 and Y = 396,080.00; thence West 7,375.00 feet to a point having Coordinates of X = 2,657,475.00 and Y = 396,080.00; thence North 14,750.00 feet to a point having Coordinates of X = 2,657,475.00 and Y = 410,830.00; thence East 7,375.00 feet to the point of beginning, containing approximately **2,497.27 acres**, all as more particularly outlined on a plat on file in the Office of Mineral Resources, Department of Natural Resources, as provided by the applicant. All bearings, distances and coordinates are based on Louisiana Coordinate System of 1927, (North or South Zone), where applicable.

NOTE: The above description of the Tract nominated for lease has been provided and corrected, where required, exclusively by the nomination party. Any mineral lease selected from this Tract and awarded by the Louisiana State Mineral Board shall be without warranty of any kind, either express, implied, or statutory, including, but not limited to, the implied warranties of merchantability and fitness for a particular purpose. Should the mineral lease awarded by the Louisiana State Mineral Board be subsequently modified, cancelled or abrogated due to the existence of conflicting leases, operating agreements, private claims or other future obligations or conditions which may affect all or any portion of the leased Tract, it shall not relieve the Lessee of the obligation to pay any bonus due thereon to the Louisiana State Mineral Board, nor shall the Louisiana State Mineral Board be obligated to refund any consideration paid by the Lessor prior to such modification, cancellation, or abrogation, including, but not limited to, bonuses, rentals and royalties.

NOTE: The Office of Mineral Resources will require a minimum bonus of \$190 per acre and a minimum bonus of 22%.

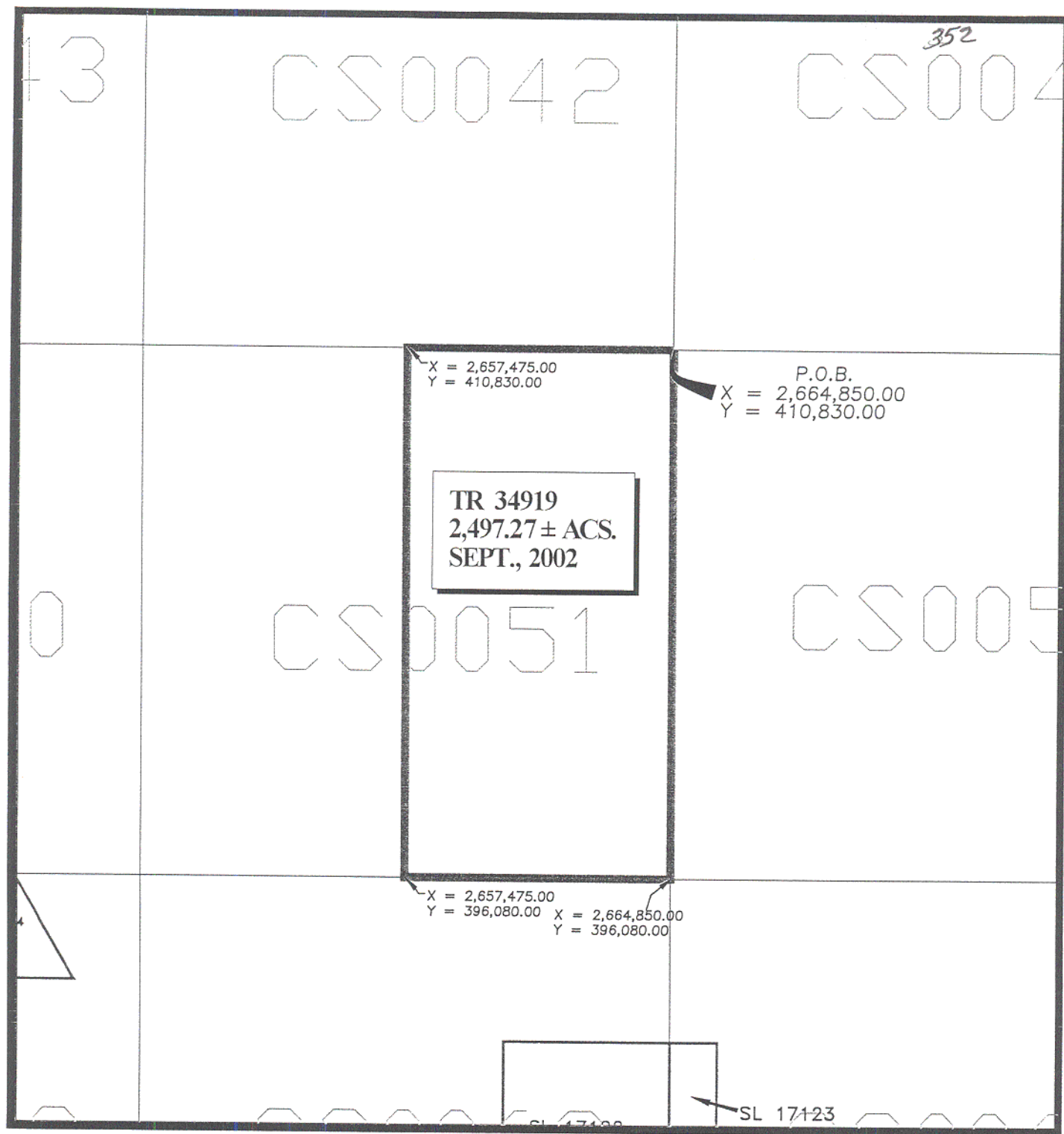
NOTE: The Department of Wildlife and Fisheries has designated certain areas in the coastal waters of the State of Louisiana as Oyster Seed Bed Areas. The exact location of those Seed Bed Areas must be obtained from the Department of Wildlife and Fisheries and any work done under a mineral lease from the State of Louisiana may necessarily be conducted in conformity with the rules and regulations promulgated by the said Department of Wildlife and Fisheries for Oyster Seed Bed Areas.

NOTE: The State of Louisiana does hereby reserve, and this lease shall be subject to, the imprescriptible right of surface use in the nature of a

servitude in favor of the Department of Natural Resources, including its Offices and Commissions, for the sole purpose of implementing, constructing, servicing and maintaining approved coastal zone management and/or restoration projects. Utilization of any and all rights derived under this lease by the mineral lessee, its agents, successors or assigns, shall not interfere with nor hinder the reasonable surface use by the Department of Natural Resources, its Offices or Commissions, as herein above reserved.

Applicant: Houston McNutt

Bidder	Cash Payment	Price / Acre	Rental	Oil	Gas	Other



CHANDELEUR SOUND AREA  
ST. BERNARD PARISH, LOUISIANA

SCALE: 1" = 4000'

**TRACT 34920 - Portion of Block 68, Chandeleur Sound Area, St. Bernard Parish, Louisiana**

All of the lands now or formerly constituting the beds and bottoms of all water bodies of every nature and description, and all islands and other lands formed by accretion, where allowed by law, or by reliction, and excepting tax adjudicated lands, belonging to the State of Louisiana and not presently under mineral lease on September 11, 2002, situated in St. Bernard Parish, Louisiana, and more particularly described as follows: Beginning at the Southwest corner of Block 68, Chandeleur Sound Area, having Coordinates of X = 2,650,100.00 and Y = 381,330.00; thence North 7,375.00 feet along the West line of said Block 68 to a point having Coordinates of X = 2,650,100.00 and Y = 388,705.00; thence East 10,175.00 feet to a point on the West line of State Lease No. 17122 having Coordinates of X = 2,660,275.00 and Y = 388,705.00; thence South 2,575.00 feet along the West line of said State Lease No. 17122 to its Southwest corner having Coordinates of X = 2,660,275.00 and Y = 386,130.00; thence East 4,575.00 feet along the South line of said State Lease No. 17122 to its Southeast corner, also being a point on the East line of said Block 68 having Coordinates of X = 2,664,850.00 and Y = 386,130.00; thence South 1,248.00 feet along the East line of said Block 68 to the Northeast corner of State Lease No. 17456 having Coordinates of X = 2,664,850.00 and Y = 384,882.00; thence along the boundary of said State Lease No. 17456 the following courses: West 2,790.00 feet and South 3,552.00 feet to a point on the South line of said Block 68 having Coordinates of X = 2,662,060.00 and Y = 381,330.00; thence West 11,960.00 feet to the point of beginning, containing approximately **1,999.32 acres**, as shown outlined on a plat on file in the Office of Mineral Resources, Department of Natural Resources, as provided by the applicant. All bearings, distances and coordinates are based on Louisiana Coordinate System of 1927, (North or South Zone), where applicable.

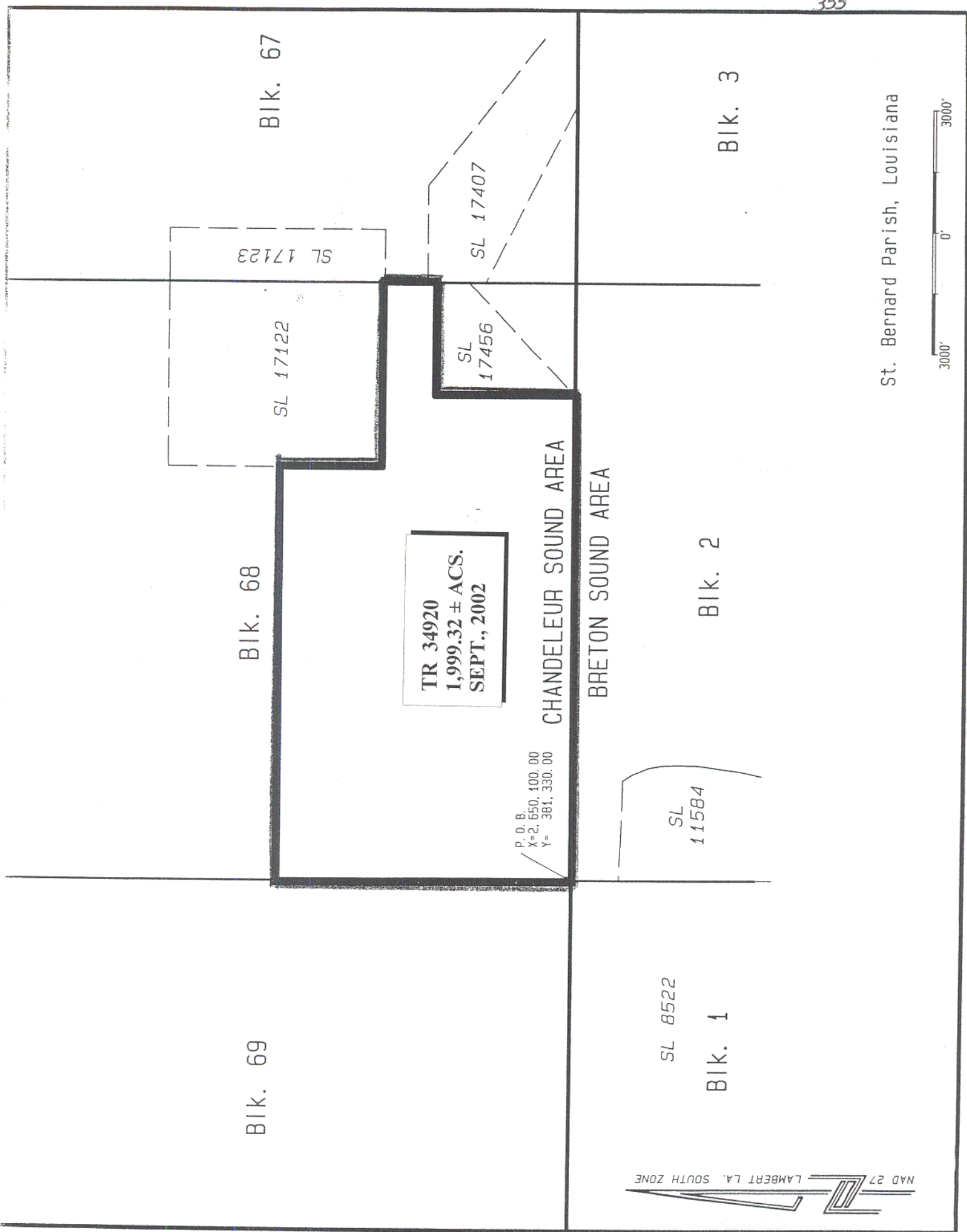
NOTE: The above description of the Tract nominated for lease has been provided and corrected, where required, exclusively by the nomination party. Any mineral lease selected from this Tract and awarded by the Louisiana State Mineral Board shall be without warranty of any kind, either express, implied, or statutory, including, but not limited to, the implied warranties of merchantability and fitness for a particular purpose. Should the mineral lease awarded by the Louisiana State Mineral Board be subsequently modified, cancelled or abrogated due to the existence of conflicting leases, operating agreements, private claims or other future obligations or conditions which may affect all or any portion of the leased Tract, it shall not relieve the Lessee of the obligation to pay any bonus due thereon to the Louisiana State Mineral Board, nor shall the Louisiana State Mineral Board be obligated to refund any consideration paid by the Lessor prior to such modification, cancellation, or abrogation, including, but not limited to, bonuses, rentals and royalties.

NOTE: The Office of Mineral Resources will require a minimum bonus of \$190 per acre and a minimum royalty of 22%.

NOTE: The State of Louisiana does hereby reserve, and this lease shall be subject to, the imprescriptible right of surface use in the nature of a servitude in favor of the Department of Natural Resources, including its Offices and Commissions, for the sole purpose of implementing, constructing, servicing and maintaining approved coastal zone management and/or restoration projects. Utilization of any and all rights derived under this lease by the mineral lessee, its agents, successors or assigns, shall not interfere with nor hinder the reasonable surface use by the Department of Natural Resources, its Offices or Commissions, as herein above reserved.

Applicant: Palmer & Palmer

Bidder	Cash Payment	Price / Acre	Rental	Oil	Gas	Other



St. Bernard Parish, Louisiana

**TRACT 34921 - Portion of Block 68, Chandeleur Sound Area, St. Bernard Parish, Louisiana**

All of the lands now or formerly constituting the beds and bottoms of all water bodies of every nature and description, and all islands and other lands formed by accretion, where allowed by law, or by reliction, and excepting tax adjudicated lands, belonging to the State of Louisiana and not presently under mineral lease on September 11, 2002, situated in St. Bernard Parish, Louisiana, and more particularly described as follows: Beginning at the Southeast corner of Block 68, Chandeleur Sound Area, having Coordinates of X = 2,664,850.00 and Y = 381,330.00; thence West 2,790.00 feet along the South line of said Block 68 to the Southern corner of State Lease No. 17456 having Coordinates of X = 2,662,060.00 and Y = 381,330.00; thence North 45 degrees 38 minutes 00 seconds East 3,902.76 feet on the boundary of said State Lease No. 17456 to its Southeast corner, also being a point on the East line of said Block 68 having Coordinates of X = 2,664,850.00 and Y = 384,059.00; thence South 2,729.00 feet to the point of beginning, containing approximately **87.40 acres**, all as more particularly outlined on a plat on file in the Office of Mineral Resources, Department of Natural Resources, as provided by the applicant. All bearings, distances and coordinates are based on Louisiana Coordinate System of 1927, (North or South Zone), where applicable.

NOTE: The above description of the Tract nominated for lease has been provided and corrected, where required, exclusively by the nomination party. Any mineral lease selected from this Tract and awarded by the Louisiana State Mineral Board shall be without warranty of any kind, either express, implied, or statutory, including, but not limited to, the implied warranties of merchantability and fitness for a particular purpose. Should the mineral lease awarded by the Louisiana State Mineral Board be subsequently modified, cancelled or abrogated due to the existence of conflicting leases, operating agreements, private claims or other future obligations or conditions which may affect all or any portion of the leased Tract, it shall not relieve the Lessee of the obligation to pay any bonus due thereon to the Louisiana State Mineral Board, nor shall the Louisiana State Mineral Board be obligated to refund any consideration paid by the Lessor prior to such modification, cancellation, or abrogation, including, but not limited to, bonuses, rentals and royalties.

NOTE: The Office of Mineral Resources will require a minimum bonus of \$190 per acre and a minimum royalty of 22%.

NOTE: The State of Louisiana does hereby reserve, and this lease shall be subject to, the imprescriptible right of surface use in the nature of a servitude in favor of the Department of Natural Resources, including its Offices and Commissions, for the sole purpose of implementing, constructing, servicing and maintaining approved coastal zone management and/or restoration projects. Utilization of any and all rights derived under this lease by the mineral lessee, its agents, successors or assigns, shall not interfere with nor hinder the reasonable surface use by the

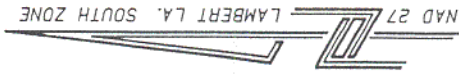


Department of Natural Resources, its Offices or Commissions, as herein above reserved.

Applicant: Palmer & Palmer

Bidder	Cash Payment	Price / Acre	Rental	Oil	Gas	Other

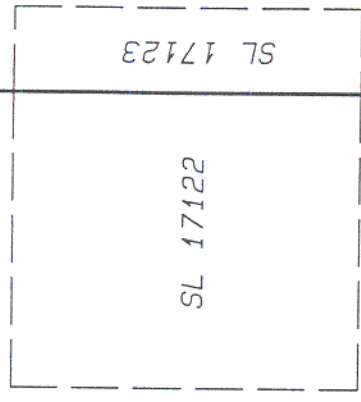
St. Bernard Parish, Louisiana



BIK. 69

BIK. 68

BIK. 67

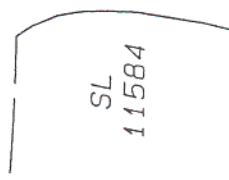


CHANDELEUR SOUND AREA

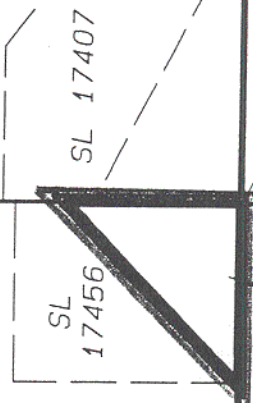
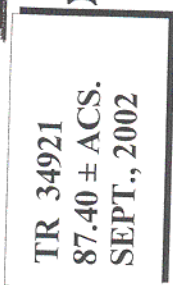
BRETON SOUND AREA

SL 8522

BIK. 1



BIK. 2



P. O. B.  
X=2,664,850.00  
Y= 381,330.00

BIK. 3

**TRACT 34922 - Portion of Block 2, Breton Sound Area, St. Bernard Parish, Louisiana**

All of the lands now or formerly constituting the beds and bottoms of all water bodies of every nature and description, and all islands and other lands formed by accretion, where allowed by law, or by reliction, and excepting tax adjudicated lands, belonging to the State of Louisiana and not presently under mineral lease on September 11, 2002, situated in St. Bernard Parish, Louisiana, and more particularly described as follows: Beginning at a point on the East line of Block 2, Breton Sound Area, having Coordinates of X = 2,664,850.00 and Y = 373,955.00; thence West 10,170.86 feet to a point on the Eastern boundary of State Lease No. 8669, as amended, having Coordinates of X = 2,654,679.14 and Y = 373,955.00; thence along the boundary of said State Lease No. 8669, as amended, the following courses: North 23 degrees 47 minutes 22 seconds East 380.66 feet to a point having Coordinates of X = 2,654,832.69 and Y = 374,303.32; North 17 degrees 46 minutes 22 seconds East 410.63 feet to a point having Coordinates of X = 2,654,958.03 and Y = 374,694.35; North 12 degrees 54 minutes 32 seconds East 361.06 feet to a point having Coordinates of X = 2,655,038.69 and Y = 375,046.28; North 06 degrees 59 minutes 08 seconds East 389.42 feet to a point having Coordinates of X = 2,655,086.05 and Y = 375,432.81 and North 66 degrees 41 minutes 58 seconds West 2,268.18 feet to its most Northerly Northeast corner, said corner also being the most Southerly Southeast corner of State Lease No. 11584, as amended, having Coordinates of X = 2,653,002.86 and Y = 376,330.00; thence along the boundary of said State Lease No. 11584, as amended, the following courses: North 66 degrees 41 minutes 58 seconds West 395.25 feet to a point having Coordinates of X = 2,652,639.84 and Y = 376,486.35; North 09 degrees 31 minutes 56 seconds East 109.00 feet to a point having Coordinates of X = 2,652,657.89 and Y = 376,593.84; North 13 degrees 34 minutes 40 seconds East 480.61 feet to a point having Coordinates of X = 2,652,770.72 and Y = 377,061.02; North 08 degrees 27 minutes 52 seconds East 591.93 feet to a point having Coordinates of X = 2,652,857.85 and Y = 377,646.50; North 07 degrees 56 minutes 04 seconds East 486.67 feet to a point having Coordinates of X = 2,652,925.03 and Y = 378,128.51; North 01 degrees 06 minutes 00 seconds East 503.18 feet to a point having Coordinates of X = 2,652,934.69 and Y = 378,631.60; North 01 degrees 49 minutes 14 seconds West 391.88 feet to a point having Coordinates of X = 2,652,922.24 and Y = 379,023.28; North 09 degrees 12 minutes 13 seconds West 357.19 feet to a point having Coordinates of X = 2,652,865.11 and Y = 379,375.87; North 21 degrees 28 minutes 37 seconds West 410.87 feet to a point having Coordinates of X = 2,652,714.68 and Y = 379,758.21; North 33 degrees 06 minutes 14 seconds West 309.03 feet to a point having Coordinates of X = 2,652,545.90 and Y = 380,017.08; North 88 degrees 28 minutes 49 seconds West 1,363.82 feet to a point having Coordinates of X = 2,651,182.56 and Y = 380,053.25 and North 86 degrees 57 minutes 40 seconds West 1,084.08 feet to its Northwest corner, said corner also being a point on the West line of said Block 2, Breton Sound Area, having Coordinates of X = 2,650,100.00 and Y = 380,110.72; thence North 1,219.28 feet along the West line of said Block 2, Breton Sound Area, to its Northwest corner having Coordinates of X = 2,650,100.00 and Y = 381,330.00; thence East 14,750.00 feet along the

North line of said Block 2, Breton Sound Area, to its Northeast corner having Coordinates of X = 2,664,850.00 and Y = 381,330.00; thence South 7,375.00 feet along the East line of said Block 2, Breton Sound Area, to the point of beginning, containing approximately **2,019.12 acres**, all as more particularly outlined on a plat on file in the Office of Mineral Resources, Department of Natural Resources, as provided by the applicant. All bearings, distances and coordinates are based on Louisiana Coordinate System of 1927, (North or South Zone), where applicable.

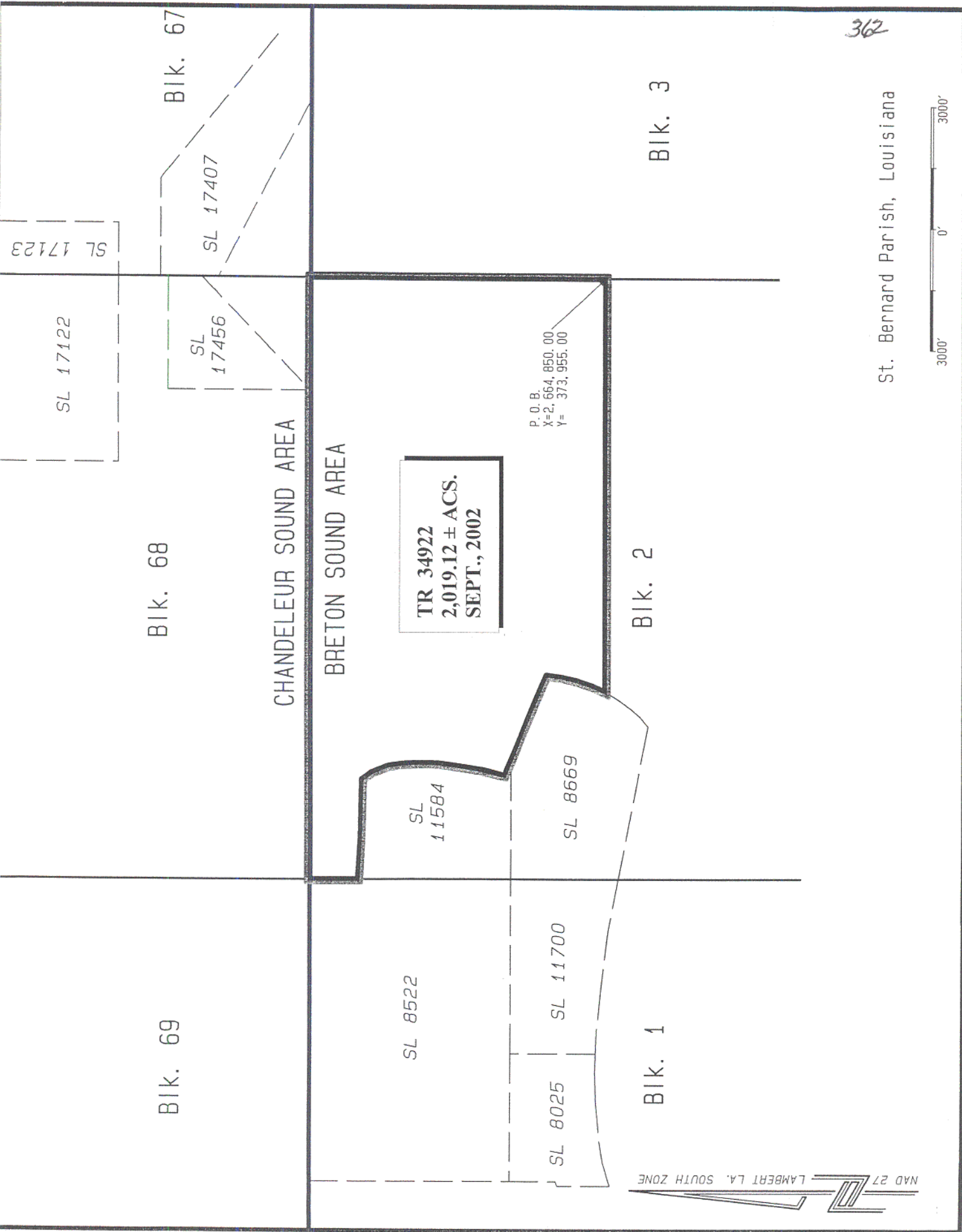
NOTE: The above description of the Tract nominated for lease has been provided and corrected, where required, exclusively by the nomination party. Any mineral lease selected from this Tract and awarded by the Louisiana State Mineral Board shall be without warranty of any kind, either express, implied, or statutory, including, but not limited to, the implied warranties of merchantability and fitness for a particular purpose. Should the mineral lease awarded by the Louisiana State Mineral Board be subsequently modified, cancelled or abrogated due to the existence of conflicting leases, operating agreements, private claims or other future obligations or conditions which may affect all or any portion of the leased Tract, it shall not relieve the Lessee of the obligation to pay any bonus due thereon to the Louisiana State Mineral Board, nor shall the Louisiana State Mineral Board be obligated to refund any consideration paid by the Lessor prior to such modification, cancellation, or abrogation, including, but not limited to, bonuses, rentals and royalties.

NOTE: The Office of Mineral Resources will require a minimum bonus of \$190 per acre and a minimum royalty of 22%.

NOTE: The State of Louisiana does hereby reserve, and this lease shall be subject to, the imprescriptible right of surface use in the nature of a servitude in favor of the Department of Natural Resources, including its Offices and Commissions, for the sole purpose of implementing, constructing, servicing and maintaining approved coastal zone management and/or restoration projects. Utilization of any and all rights derived under this lease by the mineral lessee, its agents, successors or assigns, shall not interfere with nor hinder the reasonable surface use by the Department of Natural Resources, its Offices or Commissions, as herein above reserved.

Applicant: Palmer & Palmer

Bidder	Cash Payment	Price / Acre	Rental	Oil	Gas	Other



362

St. Bernard Parish, Louisiana



**TRACT 34923 - Portion of Block 2, Breton Sound Area, St. Bernard Parish, Louisiana**

All of the lands now or formerly constituting the beds and bottoms of all water bodies of every nature and description, and all islands and other lands formed by accretion, where allowed by law, or by reliction, and excepting tax adjudicated lands, belonging to the State of Louisiana and not presently under mineral lease on September 11, 2002, situated in St. Bernard Parish, Louisiana, and more particularly described as follows: Beginning at a point on the East line of Block 2, Breton Sound Area, having Coordinates of X = 2,664,850.00 and Y = 373,955.00; thence South 7,375.00 feet along the East line of said Block 2, Breton Sound Area, to its Southeast corner having Coordinates of X = 2,664,850.00 and Y = 366,580.00; thence West 14,750.00 feet along the South line of said Block 2, Breton Sound Area, to its Southwest corner having Coordinates of X = 2,650,100.00 and Y = 366,580.00; thence North 7,051.48 feet along the West line of said Block 2, Breton Sound Area, to a point on the Southern boundary of State Lease No. 8669, as amended, having Coordinates of X = 2,650,100.00 and Y = 373,631.48; thence along the boundary of said State Lease No. 8669, as amended, the following courses: South 78 degrees 57 minutes 44 seconds East 3,807.62 feet to a point having Coordinates of X = 2,653,837.18 and Y = 372,902.49; North 50 degrees 07 minutes 46 seconds East 301.49 feet to a point having Coordinates of X = 2,654,068.57 and Y = 373,095.76; North 40 degrees 21 minutes 37 seconds East 268.19 feet to a point having Coordinates of X = 2,654,242.25 and Y = 373,300.12; North 35 degrees 59 minutes 46 seconds East 394.40 feet to a point having Coordinates of X = 2,654,474.05 and Y = 373,619.21; North 31 degrees 27 minutes 46 seconds East 391.08 feet to a point having Coordinates of X = 2,654,678.17 and Y = 373,952.79 and North 23 degrees 42 minutes 05 seconds East 2.41 feet to a point having Coordinates of X = 2,654,679.14 and Y = 373,955.00; thence East 10,170.86 feet to the point of beginning, containing approximately **2,426.72 acres**, all as more particularly outlined on a plat on file in the Office of Mineral Resources, Department of Natural Resources, as provided by the applicant. All bearings, distances and coordinates are based on Louisiana Coordinate System of 1927, (North or South Zone), where applicable.

NOTE: The above description of the Tract nominated for lease has been provided and corrected, where required, exclusively by the nomination party. Any mineral lease selected from this Tract and awarded by the Louisiana State Mineral Board shall be without warranty of any kind, either express, implied, or statutory, including, but not limited to, the implied warranties of merchantability and fitness for a particular purpose. Should the mineral lease awarded by the Louisiana State Mineral Board be subsequently modified, cancelled or abrogated due to the existence of conflicting leases, operating agreements, private claims or other future obligations or conditions which may affect all or any portion of the leased Tract, it shall not relieve the Lessee of the obligation to pay any bonus due thereon to the Louisiana State Mineral Board, nor shall the Louisiana State Mineral Board be obligated to refund any consideration

paid by the Lessor prior to such modification, cancellation, or abrogation, including, but not limited to, bonuses, rentals and royalties.

NOTE: The Office of Mineral Resources will require a minimum bid of \$190 per acre and a minimum royalty of 22%.

NOTE: The State of Louisiana does hereby reserve, and this lease shall be subject to, the imprescriptible right of surface use in the nature of a servitude in favor of the Department of Natural Resources, including its Offices and Commissions, for the sole purpose of implementing, constructing, servicing and maintaining approved coastal zone management and/or restoration projects. Utilization of any and all rights derived under this lease by the mineral lessee, its agents, successors or assigns, shall not interfere with nor hinder the reasonable surface use by the Department of Natural Resources, its Offices or Commissions, as herein above reserved.

Applicant: Palmer & Palmer

Bidder	Cash Payment	Price / Acre	Rental	Oil	Gas	Other



SL 8522

SL  
11584

SL 8025

SL 11700

SL 8669

BIK. 1

BIK. 2

P.O.B.  
X=2,664,850.00  
Y= 373,955.00

BIK. 3

TR 34923  
2,426.72 ± ACS.  
SEPT., 2002



BIK. 16

BIK. 15

BIK. 14

BRETON SOUND AREA

365

St. Bernard Parish, Louisiana



**TRACT 34924 - Portion of Block 19, Chandeleur Sound Area, St. Bernard Parish, Louisiana**

All of the lands now or formerly constituting the beds and bottoms of all water bodies of every nature and description, and all islands and other lands formed by accretion, where allowed by law, or by reliction, and excepting tax adjudicated lands, belonging to the State of Louisiana and not presently under mineral lease on September 11, 2002, situated in St. Bernard Parish, Louisiana, and more particularly described as follows: Beginning at a point being the Southeast corner of Block 19, Chandeleur Sound Area, having Coordinates of X = 2,679,600.00 and Y = 440,330.00; thence West 14,750.00 feet to a point having Coordinates of X = 2,664,850.00 and Y = 440,330.00; thence North 7,375.00 feet to a point having Coordinates of X = 2,664,850.00 and Y = 447,705.00; thence East 14,750.00 feet to a point having Coordinates of X = 2,679,600.00 and Y = 447,705.00; thence South 7,375.00 feet to the point of beginning, containing approximately **2,497.27 acres**, all as more particularly outlined on a plat on file in the Office of Mineral Resources, Department of Natural Resources, as provided by the applicant. All bearings, distances and coordinates are based on Louisiana Coordinate System of 1927, (North or South Zone), where applicable.

NOTE: The above description of the Tract nominated for lease has been provided and corrected, where required, exclusively by the nomination party. Any mineral lease selected from this Tract and awarded by the Louisiana State Mineral Board shall be without warranty of any kind, either express, implied, or statutory, including, but not limited to, the implied warranties of merchantability and fitness for a particular purpose. Should the mineral lease awarded by the Louisiana State Mineral Board be subsequently modified, cancelled or abrogated due to the existence of conflicting leases, operating agreements, private claims or other future obligations or conditions which may affect all or any portion of the leased Tract, it shall not relieve the Lessee of the obligation to pay any bonus due thereon to the Louisiana State Mineral Board, nor shall the Louisiana State Mineral Board be obligated to refund any consideration paid by the Lessor prior to such modification, cancellation, or abrogation, including, but not limited to, bonuses, rentals and royalties.

NOTE: The Office of Mineral Resources will require a minimum bonus of \$230 per acre and a minimum bonus of 23%.

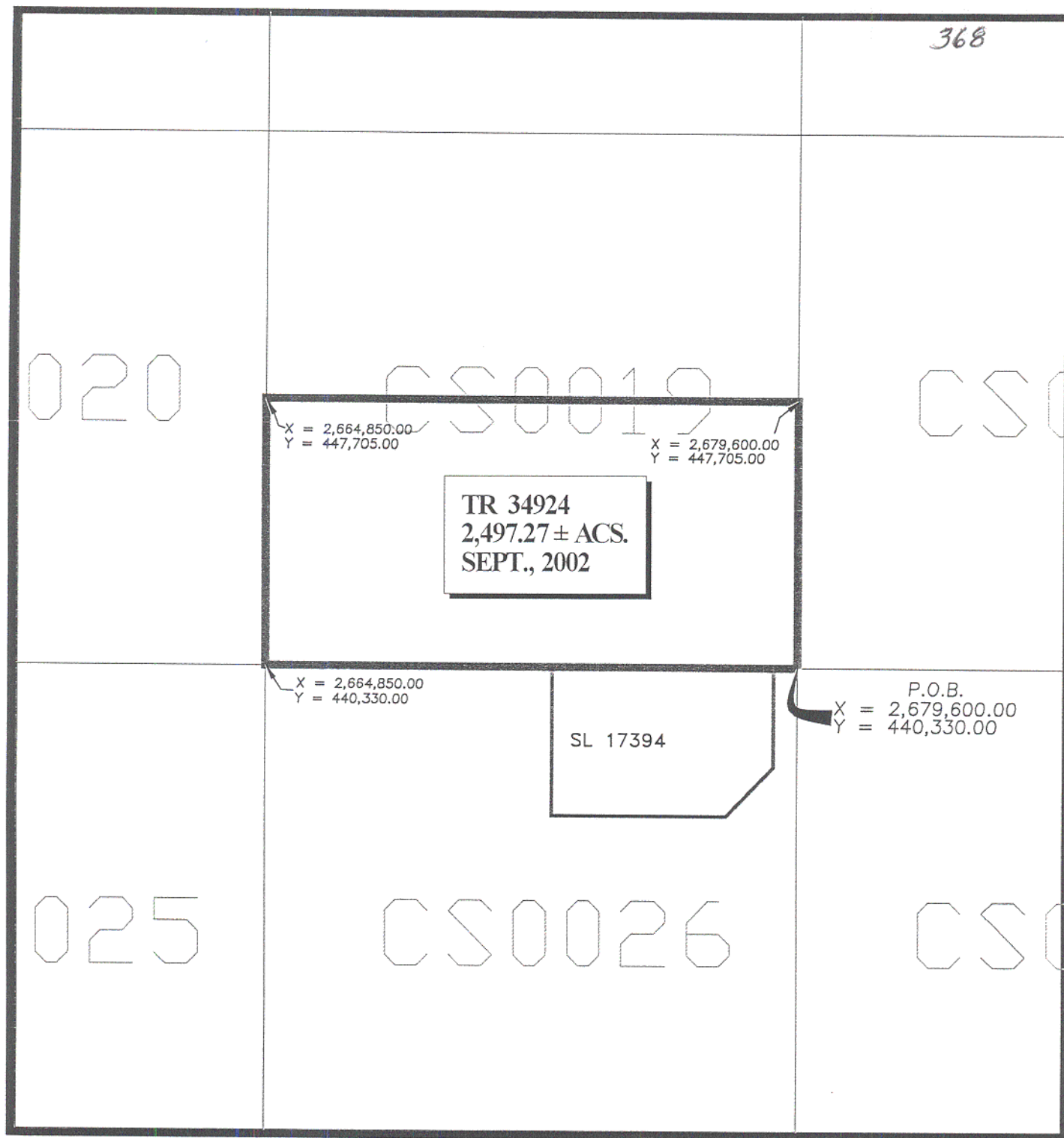
NOTE: The Department of Wildlife and Fisheries has designated certain areas in the coastal waters of the State of Louisiana as Oyster Seed Bed Areas. The exact location of those Seed Bed Areas must be obtained from the Department of Wildlife and Fisheries and any work done under a mineral lease from the State of Louisiana may necessarily be conducted in conformity with the rules and regulations promulgated by the said Department of Wildlife and Fisheries for Oyster Seed Bed Areas.

NOTE: The State of Louisiana does hereby reserve, and this lease shall be subject to, the imprescriptible right of surface use in the nature of a

servitude in favor of the Department of Natural Resources, including its Offices and Commissions, for the sole purpose of implementing, constructing, servicing and maintaining approved coastal zone management and/or restoration projects. Utilization of any and all rights derived under this lease by the mineral lessee, its agents, successors or assigns, shall not interfere with nor hinder the reasonable surface use by the Department of Natural Resources, its Offices or Commissions, as herein above reserved.

Applicant: Houston McNutt

Bidder	Cash Payment	Price / Acre	Rental	Oil	Gas	Other



CHANDELEUR SOUND AREA  
ST. BERNARD PARISH, LOUISIANA

SCALE: 1" = 4000'

**TRACT 34925 - Portion of Block 26, Chandeleur Sound Area, St. Bernard Parish, Louisiana**

All of the lands now or formerly constituting the beds and bottoms of all water bodies of every nature and description, and all islands and other lands formed by accretion, where allowed by law, or by reliction, and excepting tax adjudicated lands, belonging to the State of Louisiana and not presently under mineral lease on September 11, 2002, situated in St. Bernard Parish, Louisiana, and more particularly described as follows: Beginning at a point being the Northeast corner of Block 26, Chandeleur Sound Area, having Coordinates of X = 2,679,600.00 and Y = 440,330.00; thence South 7,375.00 feet to a point having Coordinates of X = 2,679,600.00 and Y = 432,955.00; thence West 14,750.00 feet to a point having Coordinates of X = 2,664,850.00 and Y = 432,955.00; thence North 7,375.00 feet to the Northwest corner of Block 26 having Coordinates of X = 2,664,850.00 and Y = 440,330.00; thence East 7,981.50 feet to the Northwest corner of State Lease No. 17394 having Coordinates of X = 2,672,831.50 and Y = 440,330.00; thence along said State Lease No. 17394 the following courses: South 4,126.25 feet, East 4,837.50 feet, North 43 degrees 29 minutes 22 seconds East 1,857.68 feet and North 2,778.50 feet to the Northeast corner of said State Lease No. 17394 having Coordinates of X = 2,678,947.50 and Y = 440,330.00; thence East 652.50 feet to the point of beginning, containing approximately **1,937.71 acres**, all as more particularly outlined on a plat on file in the Office of Mineral Resources, Department of Natural Resources, as provided by the applicant. All bearings, distances and coordinates are based on Louisiana Coordinate System of 1927, (North or South Zone), where applicable.

NOTE: The above description of the Tract nominated for lease has been provided and corrected, where required, exclusively by the nomination party. Any mineral lease selected from this Tract and awarded by the Louisiana State Mineral Board shall be without warranty of any kind, either express, implied, or statutory, including, but not limited to, the implied warranties of merchantability and fitness for a particular purpose. Should the mineral lease awarded by the Louisiana State Mineral Board be subsequently modified, cancelled or abrogated due to the existence of conflicting leases, operating agreements, private claims or other future obligations or conditions which may affect all or any portion of the leased Tract, it shall not relieve the Lessee of the obligation to pay any bonus due thereon to the Louisiana State Mineral Board, nor shall the Louisiana State Mineral Board be obligated to refund any consideration paid by the Lessor prior to such modification, cancellation, or abrogation, including, but not limited to, bonuses, rentals and royalties.

NOTE: The Office of Mineral Resources will require a minimum bonus of \$230 per acre and a minimum bonus of 23%.

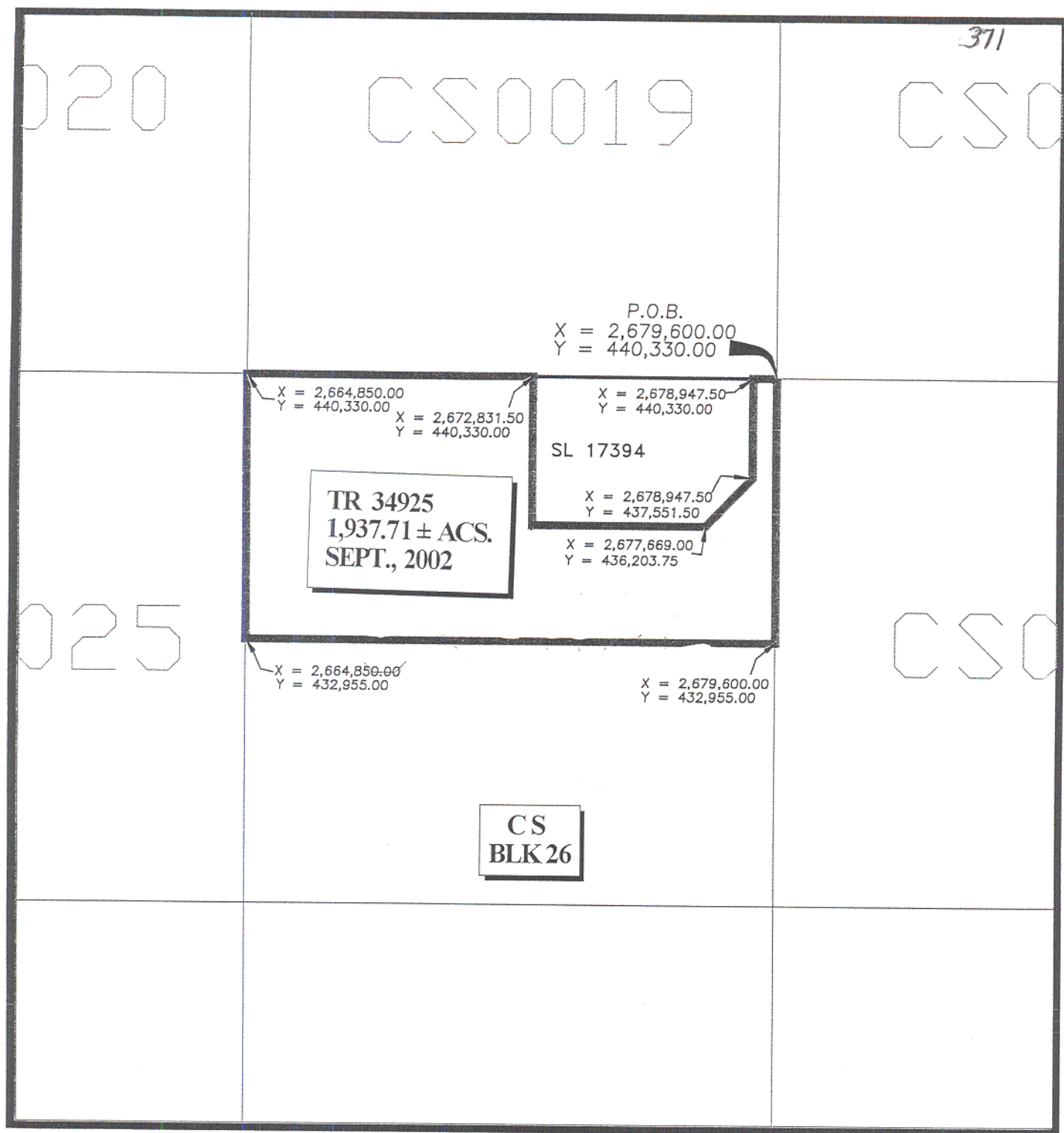
NOTE: The Department of Wildlife and Fisheries has designated certain areas in the coastal waters of the State of Louisiana as Oyster Seed Bed Areas. The exact location of those Seed Bed Areas must be obtained from the Department of Wildlife and Fisheries and any work done under a mineral

lease from the State of Louisiana may necessarily be conducted in conformity with the rules and regulations promulgated by the said Department of Wildlife and Fisheries for Oyster Seed Bed Areas.

NOTE: The State of Louisiana does hereby reserve, and this lease shall be subject to, the imprescriptible right of surface use in the nature of a servitude in favor of the Department of Natural Resources, including its Offices and Commissions, for the sole purpose of implementing, constructing, servicing and maintaining approved coastal zone management and/or restoration projects. Utilization of any and all rights derived under this lease by the mineral lessee, its agents, successors or assigns, shall not interfere with nor hinder the reasonable surface use by the Department of Natural Resources, its Offices or Commissions, as herein above reserved.

Applicant: Houston McNutt

Bidder	Cash Payment	Price / Acre	Rental	Oil	Gas	Other



CHANDELEUR SOUND AREA  
ST. BERNARD PARISH, LOUISIANA

SCALE: 1" = 4000'

**TRACT 34926 - Portion of Block 26, Chandeleur Sound Area, St. Bernard Parish, Louisiana**

All of the lands now or formerly constituting the beds and bottoms of all water bodies of every nature and description, and all islands and other lands formed by accretion, where allowed by law, or by reliction, and excepting tax adjudicated lands, belonging to the State of Louisiana and not presently under mineral lease on September 11, 2002, situated in St. Bernard Parish, Louisiana, and more particularly described as follows: Beginning at a point being the Southeast corner of Block 26, Chandeleur Sound Area, having Coordinates of X = 2,679,600.00 and Y = 425,580.00; thence West 14,750.00 feet to the Southwest corner of Block 26 to a point having Coordinates of X = 2,664,850.00 and Y = 425,580.00; thence North 7,375.00 feet to a point having Coordinates of X = 2,664,850.00 and Y = 432,955.00; thence East 14,750.00 feet to a point having Coordinates of X = 2,679,600.00 and Y = 432,955.00; thence South 7,375.00 feet to the point of beginning, containing approximately **2,497.27 acres**, all as more particularly outlined on a plat on file in the Office of Mineral Resources, Department of Natural Resources, as provided by the applicant. All bearings, distances and coordinates are based on Louisiana Coordinate System of 1927, (North or South Zone), where applicable.

NOTE: The above description of the Tract nominated for lease has been provided and corrected, where required, exclusively by the nomination party. Any mineral lease selected from this Tract and awarded by the Louisiana State Mineral Board shall be without warranty of any kind, either express, implied, or statutory, including, but not limited to, the implied warranties of merchantability and fitness for a particular purpose. Should the mineral lease awarded by the Louisiana State Mineral Board be subsequently modified, cancelled or abrogated due to the existence of conflicting leases, operating agreements, private claims or other future obligations or conditions which may affect all or any portion of the leased Tract, it shall not relieve the Lessee of the obligation to pay any bonus due thereon to the Louisiana State Mineral Board, nor shall the Louisiana State Mineral Board be obligated to refund any consideration paid by the Lessor prior to such modification, cancellation, or abrogation, including, but not limited to, bonuses, rentals and royalties.

NOTE: The Office of Mineral Resources will require a minimum bonus of \$230 per acre and a minimum bonus of 23%.

NOTE: The Department of Wildlife and Fisheries has designated certain areas in the coastal waters of the State of Louisiana as Oyster Seed Bed Areas. The exact location of those Seed Bed Areas must be obtained from the Department of Wildlife and Fisheries and any work done under a mineral lease from the State of Louisiana may necessarily be conducted in conformity with the rules and regulations promulgated by the said Department of Wildlife and Fisheries for Oyster Seed Bed Areas.

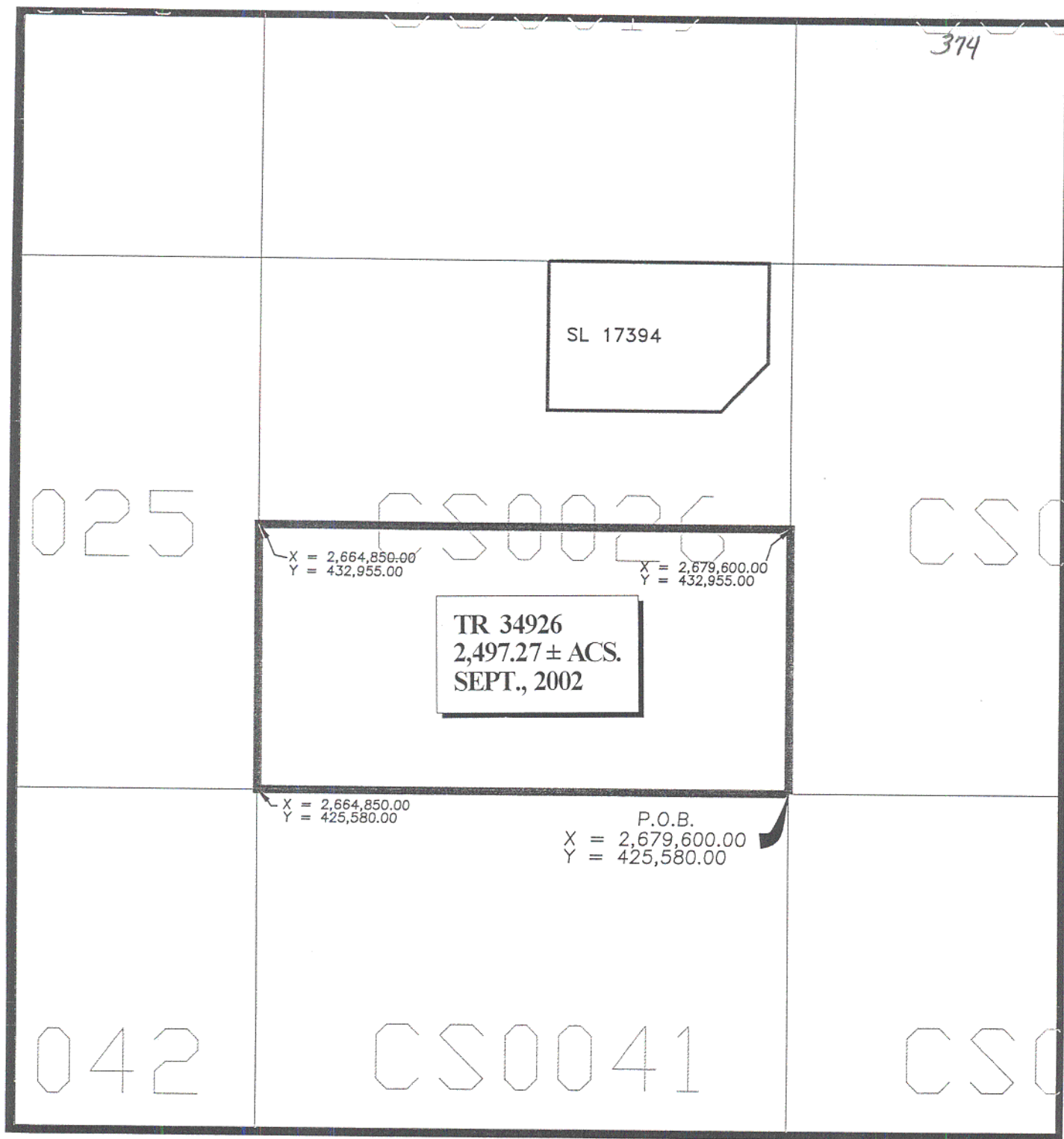
NOTE: The State of Louisiana does hereby reserve, and this lease shall be subject to, the imprescriptible right of surface use in the nature of a



servitude in favor of the Department of Natural Resources, including its Offices and Commissions, for the sole purpose of implementing, constructing, servicing and maintaining approved coastal zone management and/or restoration projects. Utilization of any and all rights derived under this lease by the mineral lessee, its agents, successors or assigns, shall not interfere with nor hinder the reasonable surface use by the Department of Natural Resources, its Offices or Commissions, as herein above reserved.

Applicant: Houston McNutt

Bidder	Cash Payment	Price / Acre	Rental	Oil	Gas	Other



CHANDELEUR SOUND AREA  
ST. BERNARD PARISH, LOUISIANA

SCALE: 1" = 4000'

**TRACT 34927 - Portion of Block 41, Chandeleur Sound Area, St. Bernard Parish, Louisiana**

All of the lands now or formerly constituting the beds and bottoms of all water bodies of every nature and description, and all islands and other lands formed by accretion, where allowed by law, or by reliction, and excepting tax adjudicated lands, belonging to the State of Louisiana and not presently under mineral lease on September 11, 2002, situated in St. Bernard Parish, Louisiana, and more particularly described as follows: Beginning at a point being the Northeast corner of Block 41, Chandeleur Sound Area, having Coordinates of X = 2,679,600.00 and Y = 425,580.00; thence South 7,375.00 feet to a point having Coordinates of X = 2,679,600.00 and Y = 418,205.00; thence West 14,750.00 feet to a point having Coordinates of X = 2,664,850.00 and Y = 418,205.00; thence North 7,375.00 feet to the Northwest corner of Block 41 having Coordinates of X = 2,664,850.00 and Y = 425,580.00; thence East 14,750.00 feet to the point of beginning, containing approximately **2,497.27 acres**, all as more particularly outlined on a plat on file in the Office of Mineral Resources, Department of Natural Resources, as provided by the applicant. All bearings, distances and coordinates are based on Louisiana Coordinate System of 1927, (North or South Zone), where applicable.

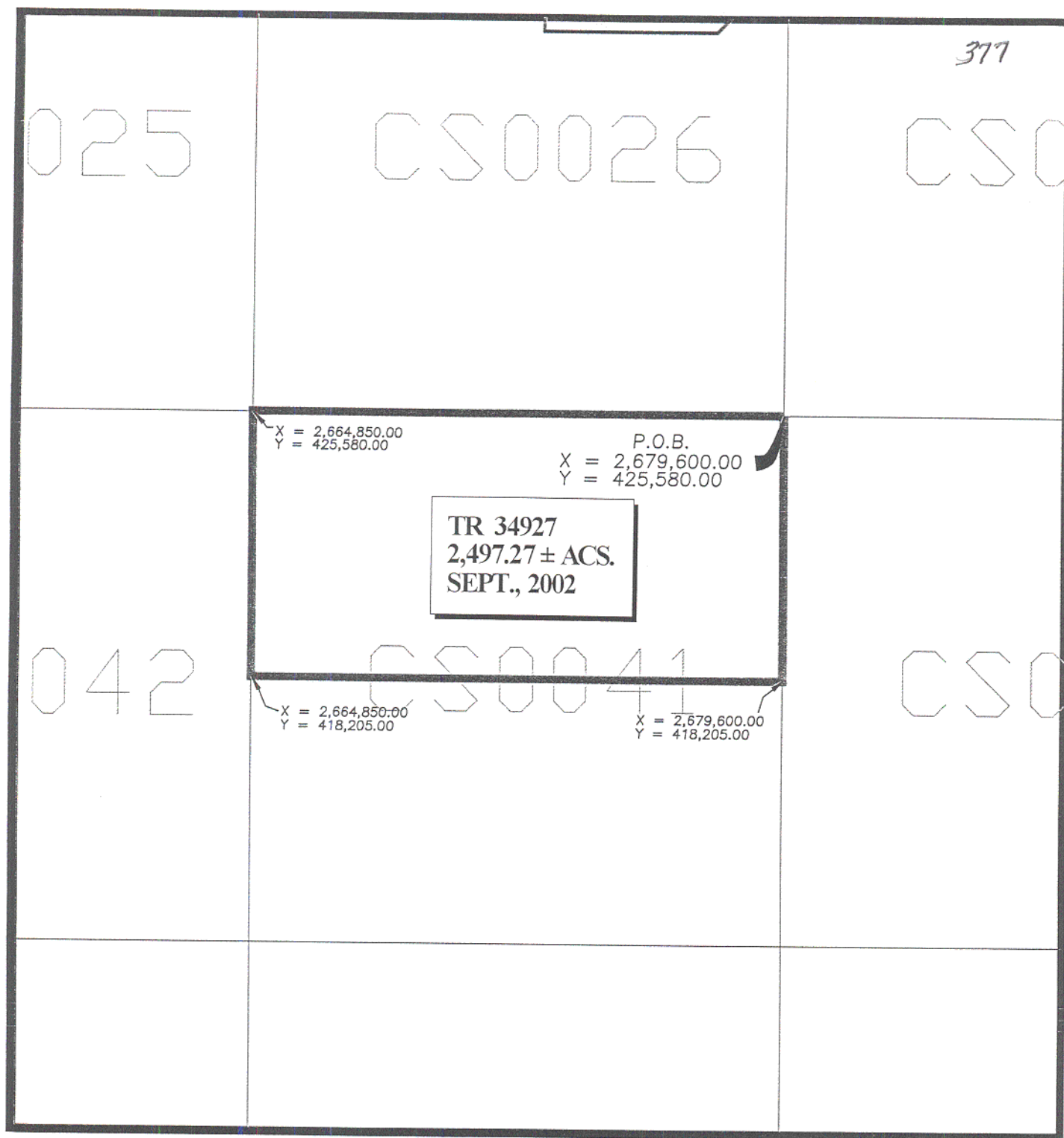
NOTE: The above description of the Tract nominated for lease has been provided and corrected, where required, exclusively by the nomination party. Any mineral lease selected from this Tract and awarded by the Louisiana State Mineral Board shall be without warranty of any kind, either express, implied, or statutory, including, but not limited to, the implied warranties of merchantability and fitness for a particular purpose. Should the mineral lease awarded by the Louisiana State Mineral Board be subsequently modified, cancelled or abrogated due to the existence of conflicting leases, operating agreements, private claims or other future obligations or conditions which may affect all or any portion of the leased Tract, it shall not relieve the Lessee of the obligation to pay any bonus due thereon to the Louisiana State Mineral Board, nor shall the Louisiana State Mineral Board be obligated to refund any consideration paid by the Lessor prior to such modification, cancellation, or abrogation, including, but not limited to, bonuses, rentals and royalties.

NOTE: The Office of Mineral Resources will require a minimum bonus of \$190 per acre and a minimum bonus of 22%.

NOTE: The State of Louisiana does hereby reserve, and this lease shall be subject to, the imprescriptible right of surface use in the nature of a servitude in favor of the Department of Natural Resources, including its Offices and Commissions, for the sole purpose of implementing, constructing, servicing and maintaining approved coastal zone management and/or restoration projects. Utilization of any and all rights derived under this lease by the mineral lessee, its agents, successors or assigns, shall not interfere with nor hinder the reasonable surface use by the Department of Natural Resources, its Offices or Commissions, as herein above reserved.

Applicant: Houston McNutt

Bidder	Cash Payment	Price / Acre	Rental	Oil	Gas	Other



CHANDELEUR SOUND AREA  
ST. BERNARD PARISH, LOUISIANA

SCALE: 1" = 4000'

**TRACT 34928 - Portion of Block 41, Chandeleur Sound Area, St. Bernard Parish, Louisiana**

All of the lands now or formerly constituting the beds and bottoms of all water bodies of every nature and description, and all islands and other lands formed by accretion, where allowed by law, or by reliction, and excepting tax adjudicated lands, belonging to the State of Louisiana and not presently under mineral lease on September 11, 2002, situated in St. Bernard Parish, Louisiana, and more particularly described as follows: Beginning at a point being the Southeast corner of Block 41, Chandeleur Sound Area, having Coordinates of X = 2,679,600.00 and Y = 410,830.00; thence West 14,750.00 feet to the Southwest corner of Block 41 to a point having Coordinates of X = 2,664,850.00 and Y = 410,830.00; thence North 7,375.00 feet to a point having Coordinates of X = 2,664,850.00 and Y = 418,205.00; thence East 14,750.00 feet to a point having Coordinates of X = 2,679,600.00 and Y = 418,205.00; thence South 7,375.00 feet to the point of beginning, containing approximately **2,497.27 acres**, all as more particularly outlined on a plat on file in the Office of Mineral Resources, Department of Natural Resources, as provided by the applicant. All bearings, distances and coordinates are based on Louisiana Coordinate System of 1927, (North or South Zone), where applicable.

NOTE: The above description of the Tract nominated for lease has been provided and corrected, where required, exclusively by the nomination party. Any mineral lease selected from this Tract and awarded by the Louisiana State Mineral Board shall be without warranty of any kind, either express, implied, or statutory, including, but not limited to, the implied warranties of merchantability and fitness for a particular purpose. Should the mineral lease awarded by the Louisiana State Mineral Board be subsequently modified, cancelled or abrogated due to the existence of conflicting leases, operating agreements, private claims or other future obligations or conditions which may affect all or any portion of the leased Tract, it shall not relieve the Lessee of the obligation to pay any bonus due thereon to the Louisiana State Mineral Board, nor shall the Louisiana State Mineral Board be obligated to refund any consideration paid by the Lessor prior to such modification, cancellation, or abrogation, including, but not limited to, bonuses, rentals and royalties.

NOTE: The Office of Mineral Resources will require a minimum bonus of \$190 per acre and a minimum bonus of 22%.

NOTE: The State of Louisiana does hereby reserve, and this lease shall be subject to, the imprescriptible right of surface use in the nature of a servitude in favor of the Department of Natural Resources, including its Offices and Commissions, for the sole purpose of implementing, constructing, servicing and maintaining approved coastal zone management and/or restoration projects. Utilization of any and all rights derived under this lease by the mineral lessee, its agents, successors or assigns, shall not interfere with nor hinder the reasonable surface use by the Department of Natural Resources, its Offices or Commissions, as herein above reserved.

Applicant: Houston McNutt

Bidder	Cash Payment	Price / Acre	Rental	Oil	Gas	Other



380

042

CS0041

CS0

X = 2,664,850.00  
Y = 418,205.00

X = 2,679,600.00  
Y = 418,205.00

TR 34928  
2,497.27 ± ACS.  
SEPT., 2002

X = 2,664,850.00  
Y = 410,830.00

P.O.B.  
X = 2,679,600.00  
Y = 410,830.00

051

CS0052

CS0

CHANDELEUR SOUND AREA  
ST. BERNARD PARISH, LOUISIANA

SCALE: 1" = 4000'



**TRACT 34929 - Portion of Block 52, Chandeleur Sound Area, St. Bernard Parish, Louisiana**

All of the lands now or formerly constituting the beds and bottoms of all water bodies of every nature and description, and all islands and other lands formed by accretion, where allowed by law, or by reliction, and excepting tax adjudicated lands, belonging to the State of Louisiana and not presently under mineral lease on September 11, 2002, situated in St. Bernard Parish, Louisiana, and more particularly described as follows: Beginning at a point being the Northeast corner of Block 52, Chandeleur Sound Area, having Coordinates of X = 2,679,600.00 and Y = 410,830.00; thence South 7,375.00 feet to a point having Coordinates of X = 2,679,600.00 and Y = 403,455.00; thence West 14,750.00 feet to a point having Coordinates of X = 2,664,850.00 and Y = 403,455.00; thence North 7,375.00 feet to the Northwest corner of Block 52 having Coordinates of X = 2,664,850.00 and Y = 410,830.00; thence East 14,750.00 feet to the point of beginning, containing approximately **2,497.27 acres**, all as more particularly outlined on a plat on file in the Office of Mineral Resources, Department of Natural Resources, as provided by the applicant. All bearings, distances and coordinates are based on Louisiana Coordinate System of 1927, (North or South Zone), where applicable.

NOTE: The above description of the Tract nominated for lease has been provided and corrected, where required, exclusively by the nomination party. Any mineral lease selected from this Tract and awarded by the Louisiana State Mineral Board shall be without warranty of any kind, either express, implied, or statutory, including, but not limited to, the implied warranties of merchantability and fitness for a particular purpose. Should the mineral lease awarded by the Louisiana State Mineral Board be subsequently modified, cancelled or abrogated due to the existence of conflicting leases, operating agreements, private claims or other future obligations or conditions which may affect all or any portion of the leased Tract, it shall not relieve the Lessee of the obligation to pay any bonus due thereon to the Louisiana State Mineral Board, nor shall the Louisiana State Mineral Board be obligated to refund any consideration paid by the Lessor prior to such modification, cancellation, or abrogation, including, but not limited to, bonuses, rentals and royalties.

NOTE: The Office of Mineral Resources will require a minimum bonus of \$190 per acre and a minimum bonus of 22%.

NOTE: The State of Louisiana does hereby reserve, and this lease shall be subject to, the imprescriptible right of surface use in the nature of a servitude in favor of the Department of Natural Resources, including its Offices and Commissions, for the sole purpose of implementing, constructing, servicing and maintaining approved coastal zone management and/or restoration projects. Utilization of any and all rights derived under this lease by the mineral lessee, its agents, successors or assigns, shall not interfere with nor hinder the reasonable surface use by the Department of Natural Resources, its Offices or Commissions, as herein above reserved.

Applicant: Houston McNutt

Bidder	Cash Payment	Price / Acre	Rental	Oil	Gas	Other



383

0042

CS0041

CS

X = 2,664,850.00  
Y = 410,830.00

P.O.B.  
X = 2,679,600.00  
Y = 410,830.00

TR 34929  
2,497.27 ± ACS.  
SEPT., 2002

0051

CS0052

CS

X = 2,664,850.00  
Y = 403,455.00

X = 2,679,600.00  
Y = 403,455.00

CHANDELEUR SOUND AREA  
ST. BERNARD PARISH, LOUISIANA

SCALE: 1" = 4000'

**TRACT 34930 - Portion of Block 52, Chandeleur Sound Area, St. Bernard Parish, Louisiana**

All of the lands now or formerly constituting the beds and bottoms of all water bodies of every nature and description, and all islands and other lands formed by accretion, where allowed by law, or by reliction, and excepting tax adjudicated lands, belonging to the State of Louisiana and not presently under mineral lease on September 11, 2002, situated in St. Bernard Parish, Louisiana, and more particularly described as follows: Beginning at a point being the Southeast corner of Block 52, Chandeleur Sound Area, having Coordinates of X = 2,679,600.00 and Y = 396,080.00; thence West 14,750.00 feet to the Southwest corner of Block 52 to a point having Coordinates of X = 2,664,850.00 and Y = 396,080.00; thence North 7,375.00 feet to a point having Coordinates of X = 2,664,850.00 and Y = 403,455.00; thence East 14,750.00 feet to a point having Coordinates of X = 2,679,600.00 and Y = 403,455.00; thence South 7,375.00 feet to the point of beginning, containing approximately **2,497.27 acres**, all as more particularly outlined on a plat on file in the Office of Mineral Resources, Department of Natural Resources, as provided by the applicant. All bearings, distances and coordinates are based on Louisiana Coordinate System of 1927, (North or South Zone), where applicable.

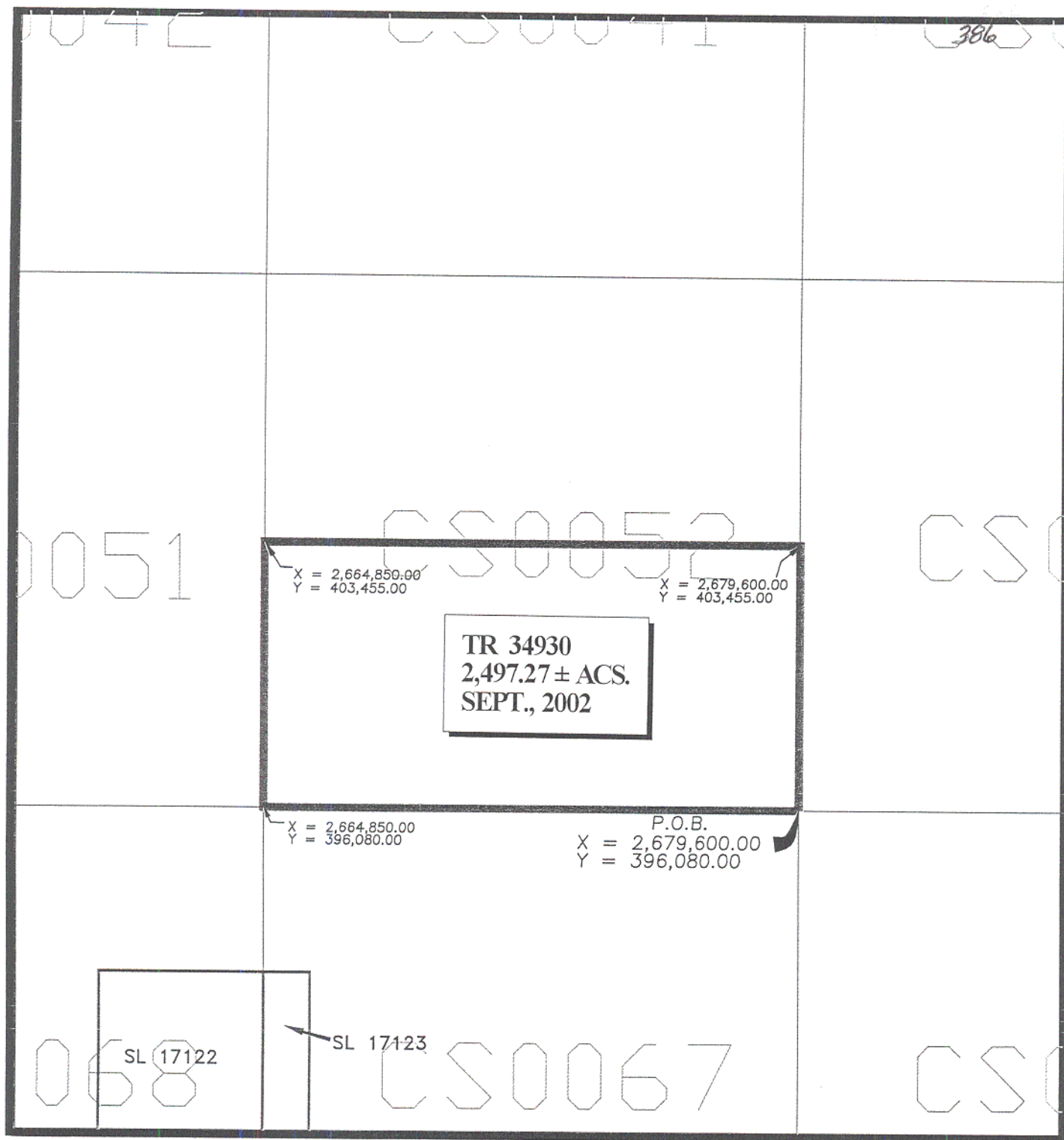
NOTE: The above description of the Tract nominated for lease has been provided and corrected, where required, exclusively by the nomination party. Any mineral lease selected from this Tract and awarded by the Louisiana State Mineral Board shall be without warranty of any kind, either express, implied, or statutory, including, but not limited to, the implied warranties of merchantability and fitness for a particular purpose. Should the mineral lease awarded by the Louisiana State Mineral Board be subsequently modified, cancelled or abrogated due to the existence of conflicting leases, operating agreements, private claims or other future obligations or conditions which may affect all or any portion of the leased Tract, it shall not relieve the Lessee of the obligation to pay any bonus due thereon to the Louisiana State Mineral Board, nor shall the Louisiana State Mineral Board be obligated to refund any consideration paid by the Lessor prior to such modification, cancellation, or abrogation, including, but not limited to, bonuses, rentals and royalties.

NOTE: The Office of Mineral Resources will require a minimum bonus of \$190 per acre and a minimum bonus of 22%.

NOTE: The State of Louisiana does hereby reserve, and this lease shall be subject to, the imprescriptible right of surface use in the nature of a servitude in favor of the Department of Natural Resources, including its Offices and Commissions, for the sole purpose of implementing, constructing, servicing and maintaining approved coastal zone management and/or restoration projects. Utilization of any and all rights derived under this lease by the mineral lessee, its agents, successors or assigns, shall not interfere with nor hinder the reasonable surface use by the Department of Natural Resources, its Offices or Commissions, as herein above reserved.

Applicant: Houston McNutt

Bidder	Cash Payment	Price / Acre	Rental	Oil	Gas	Other



CHANDELEUR SOUND AREA  
ST. BERNARD PARISH, LOUISIANA

SCALE: 1" = 4000'