

TRACT 34901 - Portion of Block 33, Breton Sound Area, Plaquemines Parish, Louisiana

All of the lands now or formerly constituting the beds and bottoms of all water bodies of every nature and description, and all islands and other lands formed by accretion, where allowed by law, or by reliction, and excepting tax adjudicated lands, belonging to the State of Louisiana and not presently under mineral lease on September 11, 2002, situated in Plaquemines Parish, Louisiana, and more particularly described as follows: Beginning at the Southwest corner of Block 33, Breton Sound Area, having Coordinates of X = 2,635,350.00 and Y = 307,580.00; thence North 8,492.86 feet along the West line of said Block 33 to a point, also being the most Southerly corner of State Lease No. 17385 having Coordinates of X = 2,635,350.00 and Y = 316,072.86; thence North 50 degrees 07 minutes 57 seconds East 5,081.24 feet along the boundary of said State Lease No. 17385 to its most Easterly corner having Coordinates of X = 2,639,250.00 and Y = 319,330.00; thence North 56 degrees 18 minutes 36 seconds West 4,687.22 feet along the boundary of said State Lease No. 17385 to its most Northerly corner, also being a point on the West line of said Block 33 having Coordinates of X = 2,635,350.00 and Y = 321,930.00; thence North 400.00 feet along the West line of said Block 33 to its Northwest corner having Coordinates of X = 2,635,350.00 and Y = 322,330.00; thence East 7,331.00 feet along the North line of said Block 33 to a point having Coordinates of X = 2,642,681.00 and Y = 322,330.00; thence South 14,750.00 feet to a point on the South line of said Block 33 having Coordinates of X = 2,642,681.00 and Y = 307,580.00; thence West 7,331.00 feet along the South line of said Block 33 to the point of beginning, containing approximately **2,220.17 acres**, all as more particularly outlined on a plat on file in the Office of Mineral Resources, Department of Natural Resources, as provided by the applicant. All bearings, distances and coordinates are based on Louisiana Coordinate System of 1927, (North or South Zone), where applicable.

NOTE: The above description of the Tract nominated for lease has been provided and corrected, where required, exclusively by the nomination party. Any mineral lease selected from this Tract and awarded by the Louisiana State Mineral Board shall be without warranty of any kind, either express, implied, or statutory, including, but not limited to, the implied warranties of merchantability and fitness for a particular purpose. Should the mineral lease awarded by the Louisiana State Mineral Board be subsequently modified, cancelled or abrogated due to the existence of conflicting leases, operating agreements, private claims or other future obligations or conditions which may affect all or any portion of the leased Tract, it shall not relieve the Lessee of the obligation to pay any bonus due thereon to the Louisiana State Mineral Board, nor shall the Louisiana State Mineral Board be obligated to refund any consideration paid by the Lessor prior to such modification, cancellation, or abrogation, including, but not limited to, bonuses, rentals and royalties.

NOTE: The State of Louisiana does hereby reserve, and this lease shall be subject to, the imprescriptible right of surface use in the nature of a

servitude in favor of the Department of Natural Resources, including its Offices and Commissions, for the sole purpose of implementing, constructing, servicing and maintaining approved coastal zone management and/or restoration projects. Utilization of any and all rights derived under this lease by the mineral lessee, its agents, successors or assigns, shall not interfere with nor hinder the reasonable surface use by the Department of Natural Resources, its Offices or Commissions, as herein above reserved.

Applicant: Cash River Exploration, Inc.

Bidder	Cash Payment	Price / Acre	Rental	Oil	Gas	Other

SL 1227, As Amended

297

Bik. 21

Bik. 32

SL 4407

SL 16935

SL 17385

SL 17384

TR 34901
2,220.17 ± ACS.
SEPT., 2002

SL 16298

SL 14217

Bik. 26

Bik. 33

SL 14216

MAIN PASS AREA, REVISED
BRETON SOUND AREA

SL 16936

SL 16795

SL 14560

SL 16937

SL 16928

Bik. 31

P. O. B.
X=2,635,350.00
Y=307,580.00

Bik. 48

SL 16796

SL 16927

GULF OF MEXICO

Plaquemines Parish, Louisiana

3000' 0' 3000'

NAD 27 LAMBERT LA. SOUTH ZONE

TRACT 34902 - Portion of Block 33, Breton Sound Area, Plaquemines Parish, Louisiana

All of the lands now or formerly constituting the beds and bottoms of all water bodies of every nature and description, and all islands and other lands formed by accretion, where allowed by law, or by reliction, and excepting tax adjudicated lands, belonging to the State of Louisiana and not presently under mineral lease on September 11, 2002, situated in Plaquemines Parish, Louisiana, and more particularly described as follows: Beginning at the Northeast corner of Block 33, Breton Sound Area, having Coordinates of X = 2,650,100.00 and Y = 322,330.00; thence South 3,000.00 feet along the East line of said Block 33 to a point, also being the Northeast corner of State Lease No. 16298 having Coordinates of X = 2,650,100.00 and Y = 319,330.00; thence West 2,650.00 feet along the North line of said State Lease No. 16298 to its Northwest corner having Coordinates of X = 2,647,450.00 and Y = 319,330.00; thence South 6,550.00 feet along the West line of said State Lease No. 16298 to its Southwest corner, also being a point on the North line of State Lease No. 16795 having Coordinates of X = 2,647,450.00 and Y = 312,780.00; thence West 550.00 feet along the North line of said State Lease No. 16795 to its Northwest corner having Coordinates of X = 2,646,900.00 and Y = 312,780.00; thence South 5,200.00 feet along the West line of said State Lease No. 16795 to its Southwest corner, also being a point on the South line of said Block 33 having Coordinates of X = 2,646,900.00 and Y = 307,580.00; thence West 4,219.00 feet along the South line of said Block 33 to a point having Coordinates of X = 2,642,681.00 and Y = 307,580.00; thence North 14,750.00 feet to a point on the North line of said Block 33 having Coordinates of X = 2,642,681.00 and Y = 322,330.00; thence East 7,419.00 feet along the North line of said Block 33 to the point of beginning, containing approximately **1,731.70 acres**, all as more particularly outlined on a plat on file in the Office of Mineral Resources, Department of Natural Resources, as provided by the applicant. All bearings, distances and coordinates are based on Louisiana Coordinate System of 1927, (North or South Zone), where applicable.

NOTE: The above description of the Tract nominated for lease has been provided and corrected, where required, exclusively by the nomination party. Any mineral lease selected from this Tract and awarded by the Louisiana State Mineral Board shall be without warranty of any kind, either express, implied, or statutory, including, but not limited to, the implied warranties of merchantability and fitness for a particular purpose. Should the mineral lease awarded by the Louisiana State Mineral Board be subsequently modified, cancelled or abrogated due to the existence of conflicting leases, operating agreements, private claims or other future obligations or conditions which may affect all or any portion of the leased Tract, it shall not relieve the Lessee of the obligation to pay any bonus due thereon to the Louisiana State Mineral Board, nor shall the Louisiana State Mineral Board be obligated to refund any consideration paid by the Lessor prior to such modification, cancellation, or abrogation, including, but not limited to, bonuses, rentals and royalties.

NOTE: The State of Louisiana does hereby reserve, and this lease shall be subject to, the imprescriptible right of surface use in the nature of a servitude in favor of the Department of Natural Resources, including its Offices and Commissions, for the sole purpose of implementing, constructing, servicing and maintaining approved coastal zone management and/or restoration projects. Utilization of any and all rights derived under this lease by the mineral lessee, its agents, successors or assigns, shall not interfere with nor hinder the reasonable surface use by the Department of Natural Resources, its Offices or Commissions, as herein above reserved.

Applicant: Cash River Exploration, Inc.

Bidder	Cash Payment	Price / Acre	Rental	Oil	Gas	Other

SL 1227, As Amended

300

Bik. 31

SL 4407

P. O. B.
X=2,650,100.00
Y= 322,330.00

Bik. 32

TR 34902
1,731.70 ± ACS.
SEPT., 2002

SL 4458

SL 17385

SL 17384

SL 14217

Bik. 34

Bik. 33

SL 16298

SL 14216

MAIN PASS AREA, REVISED
BRETON SOUND AREA

SL 16795

SL 14560, As Amended

Bik. 48

GULF OF MEXICO

SL 16796

Bik. 47

Plaquemines Parish, Louisiana

3000' 0' 3000'

NAD 27
LAMBERT LA. SOUTH ZONE

TRACT 34903 - Portion of Block 33, Main Pass Area, Revised, Plaquemines Parish, Louisiana

All of the lands now or formerly constituting the beds and bottoms of all water bodies of every nature and description, and all islands and other lands formed by accretion, where allowed by law, or by reliction, and excepting tax adjudicated lands, belonging to the State of Louisiana and not presently under mineral lease on September 11, 2002, situated in Plaquemines Parish, Louisiana, and more particularly described as follows: Beginning at the Southeast corner of Block 33, Main Pass Area, Revised, having Coordinates of X = 2,605,850.00 and Y = 292,830.00; thence West 3,250.00 feet along the South line of said Block 33 to a point, also being the Southeast corner of State Lease No. 17051 having Coordinates of X = 2,602,600.00 and Y = 292,830.00; thence North 57 degrees 03 minutes 11 seconds West 3,299.74 feet to a point along an Eastern boundary line of said State Lease No. 17051 having Coordinates of X = 2,599,830.95 and Y = 294,624.61; thence North 12,955.39 feet to a point on the North line of said Block 33 having Coordinates of X = 2,599,830.95 and Y = 307,580.00; thence East 819.05 feet along the North line of said Block 33 to a point, also being the Northwest corner of State Lease No. 16820 having Coordinates of X = 2,600,650.00 and Y = 307,580.00; thence along said boundary of State Lease No. 16820 the following courses: South 36 degrees 52 minutes 12 seconds East 7,500.00 feet and East 700.00 feet to the Southeast corner of said State Lease No. 16820, also being a point on the East line of said Block 33 having Coordinates of X = 2,605,850.00 and Y = 301,580.00; thence South 8,750.00 feet along the East line of said Block 33 to the point of beginning, containing approximately **1,574.76 acres**, all as more particularly outlined on a plat on file in the Office of Mineral Resources, Department of Natural Resources, as provided by the applicant. All bearings, distances and coordinates are based on Louisiana Coordinate System of 1927, (North or South Zone), where applicable.

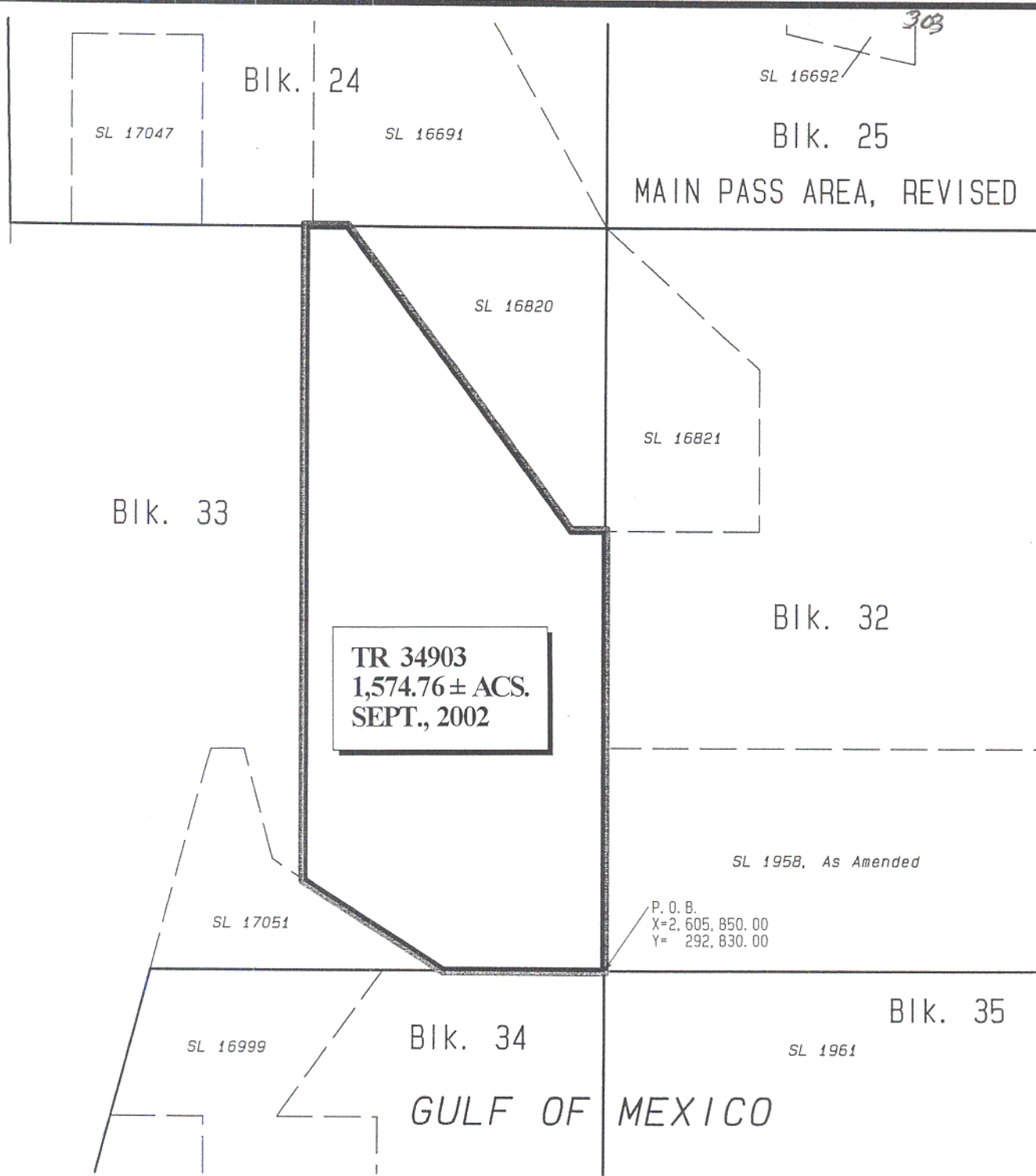
NOTE: The above description of the Tract nominated for lease has been provided and corrected, where required, exclusively by the nomination party. Any mineral lease selected from this Tract and awarded by the Louisiana State Mineral Board shall be without warranty of any kind, either express, implied, or statutory, including, but not limited to, the implied warranties of merchantability and fitness for a particular purpose. Should the mineral lease awarded by the Louisiana State Mineral Board be subsequently modified, cancelled or abrogated due to the existence of conflicting leases, operating agreements, private claims or other future obligations or conditions which may affect all or any portion of the leased Tract, it shall not relieve the Lessee of the obligation to pay any bonus due thereon to the Louisiana State Mineral Board, nor shall the Louisiana State Mineral Board be obligated to refund any consideration paid by the Lessor prior to such modification, cancellation, or abrogation, including, but not limited to, bonuses, rentals and royalties.

NOTE: The State of Louisiana does hereby reserve, and this lease shall be subject to, the imprescriptible right of surface use in the nature of a servitude in favor of the Department of Natural Resources, including its

Offices and Commissions, for the sole purpose of implementing, constructing, servicing and maintaining approved coastal zone management and/or restoration projects. Utilization of any and all rights derived under this lease by the mineral lessee, its agents, successors or assigns, shall not interfere with nor hinder the reasonable surface use by the Department of Natural Resources, its Offices or Commissions, as herein above reserved.

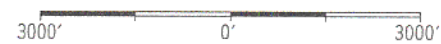
Applicant: Cash River Exploration, Inc.

Bidder	Cash Payment	Price / Acre	Rental	Oil	Gas	Other



NAD 27 LAMBERT LA. SOUTH ZONE

Plaquemines Parish, Louisiana



TRACT 34904 - Portion of Block 31, Main Pass Area, Revised, Plaquemines Parish, Louisiana

All of the lands now or formerly constituting the beds and bottoms of all water bodies of every nature and description, and all islands and other lands formed by accretion, where allowed by law, or by reliction, and excepting tax adjudicated lands, belonging to the State of Louisiana and not presently under mineral lease on September 11, 2002, situated in Plaquemines Parish, Louisiana, and more particularly described as follows: Beginning at a point having Coordinates of X = 2,620,600.00 and Y = 307,580.00, said point also being the Northwest corner of Block 31, Main Pass Area, Revised; thence East 6,074.81 feet on and along the North line of said Block 31, Main Pass Area, Revised, to a point having Coordinates of X = 2,626,674.81 and Y = 307,580.00; said point also being on the Western boundary of State of Louisiana - State Lease No. 16926; thence on and along the Western and Southern boundaries of said State of Louisiana - State Lease No. 16926 and on and along the Southern and Eastern boundaries of State of Louisiana - State Lease No. 16928 the following courses and distances, to-wit: South 11 degrees 49 minutes 26 seconds East 1,616.29 feet to a point having Coordinates of X = 2,627,006.00 and Y = 305,998.00; North 72 degrees 22 minutes 24 seconds East 1,016.74 feet to a point having Coordinates of X = 2,627,975.00 and Y = 306,305.88; North 72 degrees 22 minutes 24 seconds East 2,143.64 feet to a point having Coordinates of X = 2,630,018.00 and Y = 306,955.00; and North 13 degrees 13 minutes 42 seconds West 642.04 feet to a point having Coordinates of X = 2,629,871.08 and Y = 307,580.00, said point also being on said North line of said Block 31, Main Pass Area, Revised; thence East 5,478.92 feet on and along said North line of said Block 31, Main Pass Area, Revised, to a point having Coordinates of X = 2,635,350.00 and Y = 307,580.00, said point also being the Northeast corner of said Block 31, Main Pass Area, Revised; thence South 5,673.62 feet on and along the East line of said Block 31, Main Pass Area, Revised, to a point having Coordinates of X = 2,635,350.00 and Y = 301,906.38; said point also being on the Northern boundary of State of Louisiana - State Lease No. 12002, as amended; thence on and along said Northern boundary of said State of Louisiana - State Lease No. 12002, as amended, the following courses and distances, to-wit: South 78 degrees 33 minutes 21 seconds West 881.07 feet to a point having Coordinates of X = 2,634,486.45 and Y = 301,731.56; South 75 degrees 09 minutes 03 seconds West 593.20 feet to a point having Coordinates of X = 2,633,913.06 and Y = 301,579.54; South 67 degrees 31 minutes 25 seconds West 598.99 feet to a point having Coordinates of X = 2,633,359.57 and Y = 301,350.55; South 62 degrees 46 minutes 18 seconds West 618.96 feet to a point having Coordinates of X = 2,632,809.20 and Y = 301,067.35; South 54 degrees 53 minutes 40 seconds West 979.30 feet to a point having Coordinates of X = 2,632,008.04 and Y = 300,504.17; and South 50 degrees 08 minutes 29 seconds West 2,861.88 feet to a point having Coordinates of X = 2,629,811.17 and Y = 298,670.00; thence West 1,836.17 feet to a point having Coordinates of X = 2,627,975.00 and Y = 298,670.00, said point also being on the Eastern boundary of State of Louisiana - State Lease No. 17294; thence on and along the Eastern and Northern boundaries of said State of Louisiana - State Lease No. 17294 the following courses and

distances, to-wit: North 30 degrees 00 minutes 01 seconds West 4,589.95 feet to a point having Coordinates of X = 2,625,680.00 and Y = 302,645.00; and South 63 degrees 15 minutes 14 seconds West 5,688.63 feet to a point having Coordinates of X = 2,620,600.00 and Y = 300,084.89, said point also being on the West line of said Block 31, Main Pass Area, Revised; thence North 7,495.11 feet on and along said West line of said Block 31, Main Pass Area, Revised, to the point of beginning, **LESS AND EXCEPT** all those portions of State Lease No. 16927 that may lie within the above described tract, containing approximately **2,056.24 acres**, all as more particularly outlined on a plat on file in the Office of Mineral Resources, Department of Natural Resources, as provided by the applicant. All bearings, distances and coordinates are based on Louisiana Coordinate System of 1927, (North or South Zone), where applicable.

NOTE: The above description of the Tract nominated for lease has been provided and corrected, where required, exclusively by the nomination party. Any mineral lease selected from this Tract and awarded by the Louisiana State Mineral Board shall be without warranty of any kind, either express, implied, or statutory, including, but not limited to, the implied warranties of merchantability and fitness for a particular purpose. Should the mineral lease awarded by the Louisiana State Mineral Board be subsequently modified, cancelled or abrogated due to the existence of conflicting leases, operating agreements, private claims or other future obligations or conditions which may affect all or any portion of the leased Tract, it shall not relieve the Lessee of the obligation to pay any bonus due thereon to the Louisiana State Mineral Board, nor shall the Louisiana State Mineral Board be obligated to refund any consideration paid by the Lessor prior to such modification, cancellation, or abrogation, including, but not limited to, bonuses, rentals and royalties.

NOTE: The State of Louisiana does hereby reserve, and this lease shall be subject to, the imprescriptible right of surface use in the nature of a servitude in favor of the Department of Natural Resources, including its Offices and Commissions, for the sole purpose of implementing, constructing, servicing and maintaining approved coastal zone management and/or restoration projects. Utilization of any and all rights derived under this lease by the mineral lessee, its agents, successors or assigns, shall not interfere with nor hinder the reasonable surface use by the Department of Natural Resources, its Offices or Commissions, as herein above reserved.

Applicant: Robert A. Schroeder, Inc.

Bidder	Cash Payment	Price / Acre	Rental	Oil	Gas	Other

TRACT 34905 - Portion of Block 31, Main Pass Area, Revised, Plaquemines Parish, Louisiana

All of the lands now or formerly constituting the beds and bottoms of all water bodies of every nature and description, and all islands and other lands formed by accretion, where allowed by law, or by reliction, and excepting tax adjudicated lands, belonging to the State of Louisiana and not presently under mineral lease on September 11, 2002, situated in Plaquemines Parish, Louisiana, and more particularly described as follows: Beginning at a point having Coordinates of X = 2,620,600.00 and Y = 295,695.00, said point also being on the West line of Block 31, Main Pass Area, Revised, and on the Southern boundary of State Lease No. 17294; thence North 68 degrees 01 minutes 53 seconds East 7,952.44 feet on and along said Southern boundary of State Lease No. 17294 to a point having Coordinates of X = 2,627,975.00 and Y = 298,670.00; thence East 1,836.17 feet to a point having Coordinates of X = 2,629,811.17 and Y = 298,670.00, said point also being on the Northern boundary of said State Lease No. 12002, as amended; thence on and along the Northern, Western, and Southern boundaries of said State Lease No. 12002, as amended, the following courses and distances, to-wit: South 50 degrees 08 minutes 29 seconds West 508.06 feet to a point having Coordinates of X = 2,629,421.17 and Y = 298,344.39; South 1,514.40 feet to a point having Coordinates of X = 2,629,421.17 and Y = 296,830.00; and East 5,928.83 feet to a point having Coordinates of X = 2,635,350.00 and Y = 296,830.00, said point also being on the East line of said Block 31, Main Pass Area, Revised; thence South 3,520.48 feet on and along said East line of said Block 31, Main Pass Area, Revised, to a point having Coordinates of X = 2,635,350.00 and Y = 293,309.52, said point also being on the Northern boundary of State Lease No. 16929; thence on and along the Northern and Western boundaries of said State Lease No. 16929 the following courses and distances, to-wit: North 67 degrees 14 minutes 29 seconds West 2,438.89 feet to a point having Coordinates of X = 2,633,101.00 and Y = 294,253.00; South 82 degrees 03 minutes 16 seconds West 2,676.70 feet to a point having Coordinates of X = 2,630,450.00 and Y = 293,883.00; and South 18 degrees 00 minutes 41 seconds West 1,107.26 feet to a point having Coordinates of X = 2,630,107.63 and Y = 292,830.00, said point also being on the South line of said Block 31, Main Pass Area, Revised; thence West 5,857.63 feet on and along said South line of said Block 31, Main Pass Area, Revised, to a point having Coordinates of X = 2,624,250.00 and Y = 292,830.00, said point also being on the Eastern boundary of State Lease No. 2125, as amended; thence on and along the Eastern and Northern boundaries of said State Lease No. 2125, as amended, the following courses and distances, to-wit: North 52 degrees 54 minutes 26 seconds East 2,570.02 feet to a point having Coordinates of X = 2,626,300.00 and Y = 294,380.00; North 10 degrees 46 minutes 25 seconds East 2,514.32 feet to a point having Coordinates of X = 2,626,770.00 and Y = 296,850.00; South 83 degrees 19 minutes 25 seconds West 3,010.42 feet to a point having Coordinates of X = 2,623,780.00 and Y = 296,500.00; South 55 degrees 44 minutes 20 seconds West 3,339.46 feet to a point having Coordinates of X = 2,621,020.00 and Y = 294,620.00; and North 63 degrees 26 minutes 06 seconds West 469.57 feet to a point having Coordinates of X = 2,620,600.00 and Y = 294,830.00, said

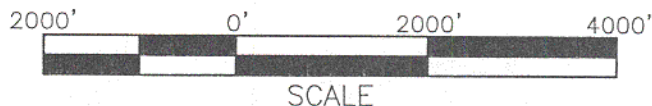
point also being on said West line of said Block 31, Main Pass Area, Revised; thence North 865.00 feet on and along said West line of said Block 31, Main Pass Area, Revised, to the point of beginning, containing approximately **959.44 acres**, all as more particularly outlined on a plat on file in the Office of Mineral Resources, Department of Natural Resources, as provided by the applicant. All bearings, distances and coordinates are based on Louisiana Coordinate System of 1927, (North or South Zone), where applicable.

NOTE: The above description of the Tract nominated for lease has been provided and corrected, where required, exclusively by the nomination party. Any mineral lease selected from this Tract and awarded by the Louisiana State Mineral Board shall be without warranty of any kind, either express, implied, or statutory, including, but not limited to, the implied warranties of merchantability and fitness for a particular purpose. Should the mineral lease awarded by the Louisiana State Mineral Board be subsequently modified, cancelled or abrogated due to the existence of conflicting leases, operating agreements, private claims or other future obligations or conditions which may affect all or any portion of the leased Tract, it shall not relieve the Lessee of the obligation to pay any bonus due thereon to the Louisiana State Mineral Board, not shall the Louisiana State Mineral Board be obligated to refund any consideration paid by the Lessor prior to such modification, cancellation, or abrogation, including, but not limited to, bonuses, rentals and royalties.

NOTE: The State of Louisiana does hereby reserve, and this lease shall be subject to, the imprescriptible right of surface use in the nature of a servitude in favor of the Department of Natural Resources, including its Offices and Commissions, for the sole purpose of implementing, constructing, servicing and maintaining approved coastal zone management and/or restoration projects. Utilization of any and all rights derived under this lease by the mineral lessee, its agents, successors or assigns, shall not interfere with nor hinder the reasonable surface use by the Department of Natural Resources, its Offices or Commissions, as herein above reserved.

Applicant: Robert A. Schroeder, Inc.

Bidder	Cash Payment	Price / Acre	Rental	Oil	Gas	Other



TRACT 34906 - Portion of Block 48, Breton Sound Area, Plaquemines Parish, Louisiana

All of the lands now or formerly constituting the beds and bottoms of all water bodies of every nature and description, and all islands and other lands formed by accretion, where allowed by law, or by reliction, and excepting tax adjudicated lands, belonging to the State of Louisiana and not presently under mineral lease on September 11, 2002, situated in Plaquemines Parish, Louisiana, and more particularly described as follows: Beginning at the Northwest corner of Block 48, Breton Sound Area, having Coordinates of X = 2,635,350.00 and Y = 307,580.00; thence East 7,331.00 feet along the North line of said Block 48 to a point having Coordinates of X = 2,642,681.00 and Y = 307,580.00; thence South 13,670.00 feet to the Northeast corner of State Lease No. 17296 having Coordinates of X = 2,642,681.00 and Y = 293,910.00; thence West 3,525.00 feet along the North line of said State Lease No. 17296 to its Northwest corner having Coordinates of X = 2,639,156.00 and Y = 293,910.00; thence South 1,080.00 feet along the West line of said State Lease No. 17296 to its Southwest corner, also being a point on the South line of said Block 48 having Coordinates of X = 2,639,156.00 and Y = 292,830.00; thence West 520.00 feet along the South line of said Block 48 to a point, also being the Southeast corner of State Lease No. 17295 having Coordinates of X = 2,638,636.00 and Y = 292,830.00; thence North 1,822.00 feet along the East line of said State Lease No. 17295 to its Northeast corner having Coordinates of X = 2,638,636.00 and Y = 294,652.00; thence West 2,485.00 feet along the North line of said State Lease No. 17295 to its Northwest corner having Coordinates of X = 2,636,151.00 and Y = 294,652.00; thence South 1,822.00 feet along the West line of said State Lease No. 17295 to its Southwest corner, also being a point on the South line of said Block 48 having Coordinates of X = 2,636,151.00 and Y = 292,830.00; thence West 801.00 feet along the South line of said Block 48 to its Southwest corner having Coordinates of X = 2,635,350.00 and Y = 292,830.00; thence North 14,750.00 feet along the West line of said Block 48 to the point of beginning, containing approximately **2,291.04 acres**, all as more particularly outlined on a plat on file in the Office of Mineral Resources, Department of Natural Resources, as provided by the applicant. All bearings, distances and coordinates are based on Louisiana Coordinate System of 1927, (North or South Zone), where applicable.

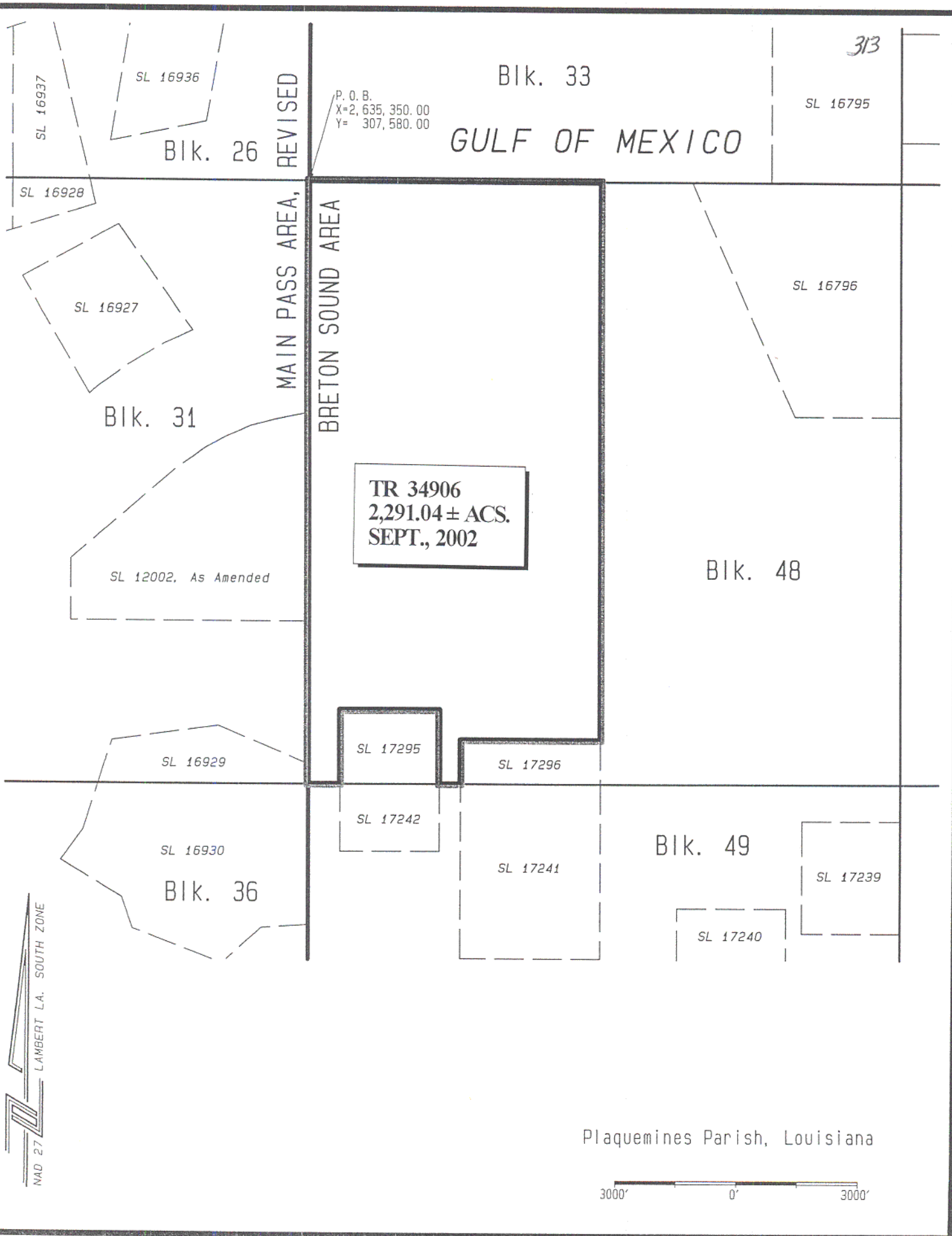
NOTE: The above description of the Tract nominated for lease has been provided and corrected, where required, exclusively by the nomination party. Any mineral lease selected from this Tract and awarded by the Louisiana State Mineral Board shall be without warranty of any kind, either express, implied, or statutory, including, but not limited to, the implied warranties of merchantability and fitness for a particular purpose. Should the mineral lease awarded by the Louisiana State Mineral Board be subsequently modified, cancelled or abrogated due to the existence of conflicting leases, operating agreements, private claims or other future obligations or conditions which may affect all or any portion of the leased Tract, it shall not relieve the Lessee of the obligation to pay any bonus due thereon to the Louisiana State Mineral Board, nor shall

the Louisiana State Mineral Board be obligated to refund any consideration paid by the Lessor prior to such modification, cancellation, or abrogation, including, but not limited to, bonuses, rentals and royalties.

NOTE: The State of Louisiana does hereby reserve, and this lease shall be subject to, the imprescriptible right of surface use in the nature of a servitude in favor of the Department of Natural Resources, including its Offices and Commissions, for the sole purpose of implementing, constructing, servicing and maintaining approved coastal zone management and/or restoration projects. Utilization of any and all rights derived under this lease by the mineral lessee, its agents, successors or assigns, shall not interfere with nor hinder the reasonable surface use by the Department of Natural Resources, its Offices or Commissions, as herein above reserved.

Applicant: Cash River Exploration, Inc.

Bidder	Cash Payment	Price / Acre	Rental	Oil	Gas	Other



TRACT 34907 - Portion of Block 48, Breton Sound Area, Plaquemines Parish, Louisiana

All of the lands now or formerly constituting the beds and bottoms of all water bodies of every nature and description, and all islands and other lands formed by accretion, where allowed by law, or by reliction, and excepting tax adjudicated lands, belonging to the State of Louisiana and not presently under mineral lease on September 11, 2002, situated in Plaquemines Parish, Louisiana, and more particularly described as follows: Beginning at the Southeast corner of Block 48, Breton Sound Area, having Coordinates of X = 2,650,100.00 and Y = 292,830.00; thence West 7,419.00 feet along the South line of said Block 48 to a point, also being the Southeast corner of State Lease No. 17296 having Coordinates of X = 2,642,681.00 and Y = 292,830.00; thence North 1,080.00 feet along the East line of said State Lease No. 17296 to its Northeast corner having Coordinates of X = 2,642,681.00 and Y = 293,910.00; thence North 13,670.00 feet to a point on the North line of said Block 48 having Coordinates of X = 2,642,681.00 and Y = 307,580.00; thence East 2,258.00 feet along the North line of said Block 48 to a point, also being the Northwest corner of State Lease No. 16796 having Coordinates of X = 2,644,939.00 and Y = 307,580.00; thence South 23 degrees 57 minutes 18 seconds East 6,265.70 feet along the West line of said State Lease No. 16796 to its Southwest corner having Coordinates of X = 2,647,483.00 and Y = 301,854.00; thence East 2,617.00 feet along the South line of said State Lease No. 16796 to its Southeast corner, also being a point on the East line of said Block 48 having Coordinates of X = 2,650,100.00 and Y = 301,854.00; thence South 9,024.00 feet along the East line of said Block 48 to the point of beginning, containing approximately **2,000.96 acres**, all as more particularly outlined on a plat on file in the Office of Mineral Resources, Department of Natural Resources, as provided by the applicant. All bearings, distances and coordinates are based on Louisiana Coordinate System of 1927, (North or South Zone), where applicable.

NOTE: The above description of the Tract nominated for lease has been provided and corrected, where required, exclusively by the nomination party. Any mineral lease selected from this Tract and awarded by the Louisiana State Mineral Board shall be without warranty of any kind, either express, implied, or statutory, including, but not limited to, the implied warranties of merchantability and fitness for a particular purpose. Should the mineral lease awarded by the Louisiana State Mineral Board be subsequently modified, cancelled or abrogated due to the existence of conflicting leases, operating agreements, private claims or other future obligations or conditions which may affect all or any portion of the leased Tract, it shall not relieve the Lessee of the obligation to pay any bonus due thereon to the Louisiana State Mineral Board, nor shall the Louisiana State Mineral Board be obligated to refund any consideration paid by the Lessor prior to such modification, cancellation, or abrogation, including, but not limited to, bonuses, rentals and royalties.

NOTE: The State of Louisiana does hereby reserve, and this lease shall be subject to, the imprescriptible right of surface use in the nature of a

servitude in favor of the Department of Natural Resources, including its Offices and Commissions, for the sole purpose of implementing, constructing, servicing and maintaining approved coastal zone management and/or restoration projects. Utilization of any and all rights derived under this lease by the mineral lessee, its agents, successors or assigns, shall not interfere with nor hinder the reasonable surface use by the Department of Natural Resources, its Offices or Commissions, as herein above reserved.

Applicant: Cash River Exploration, Inc.

Bidder	Cash Payment	Price / Acre	Rental	Oil	Gas	Other

Bik. 33

GULF OF MEXICO

SL 16795

SL 14560, As Amended ³¹⁶

Bik. 34

MAIN PASS AREA, REVISED

BRETON SOUND AREA

SL 16796

Bik. 47

Bik. 48

TR 34907
2,000.96 ± ACS.
SEPT., 2002

SL 16797

SL 12002, As Amended

SL 16929

SL 17295

SL 17296

SL 17242

SL 17241

SL 16930

Bik. 49

SL 17239

P. O. B.
X=2,650,100.00
Y= 292,830.00

Bik. 50

SL 17240

Plaquemines Parish, Louisiana

3000' 0' 3000'

NAD 27 - LAMBERT LA. SOUTH ZONE

TRACT 34908 - Portion of Block 35, Main Pass Area, Revised, Plaquemines Parish, Louisiana

All of the lands now or formerly constituting the beds and bottoms of all water bodies of every nature and description, and all islands and other lands formed by accretion, where allowed by law, or by reliction, and excepting tax adjudicated lands, belonging to the State of Louisiana and not presently under mineral lease on September 11, 2002, situated in Plaquemines Parish, Louisiana, and more particularly described as follows: Beginning at the Southeast corner of Block 35, Main Pass Area, Revised, having Coordinates of X = 2,620,600.00 and Y = 278,080.00; thence West 14,750.00 feet along the South line of said Block 35 to its Southwest corner having Coordinates of X = 2,605,850.00 and Y = 278,080.00; thence North 7,365.80 feet on the West line of said Block 35 to the Southwest corner of State Lease No. 1961, as amended, having Coordinates of X = 2,605,850.00 and Y = 285,445.80; thence East 14,750.00 feet along the South line of said State Lease No. 1961 to its Southeast corner, also being a point on the East line of said Block 35 having Coordinates of X = 2,620,600.00 and Y = 285,445.80; thence South 7,365.80 feet along the East line of said Block 35 to the point of beginning, containing approximately **2,494.16 acres**, all as more particularly outlined on a plat on file in the Office of Mineral Resources, Department of Natural Resources, as provided by the applicant. All bearings, distances and coordinates are based on Louisiana Coordinate System of 1927, (North or South Zone), where applicable.

NOTE: The above description of the Tract nominated for lease has been provided and corrected, where required, exclusively by the nomination party. Any mineral lease selected from this Tract and awarded by the Louisiana State Mineral Board shall be without warranty of any kind, either express, implied, or statutory, including, but not limited to, the implied warranties of merchantability and fitness for a particular purpose. Should the mineral lease awarded by the Louisiana State Mineral Board be subsequently modified, cancelled or abrogated due to the existence of conflicting leases, operating agreements, private claims or other future obligations or conditions which may affect all or any portion of the leased Tract, it shall not relieve the Lessee of the obligation to pay any bonus due thereon to the Louisiana State Mineral Board, nor shall the Louisiana State Mineral Board be obligated to refund any consideration paid by the Lessor prior to such modification, cancellation, or abrogation, including, but not limited to, bonuses, rentals and royalties.

NOTE: The State of Louisiana does hereby reserve, and this lease shall be subject to, the imprescriptible right of surface use in the nature of a servitude in favor of the Department of Natural Resources, including its Offices and Commissions, for the sole purpose of implementing, constructing, servicing and maintaining approved coastal zone management and/or restoration projects. Utilization of any and all rights derived under this lease by the mineral lessee, its agents, successors or assigns, shall not interfere with nor hinder the reasonable surface use by the

Department of Natural Resources, its Offices or Commissions, as herein above reserved.

Applicant: Cash River Exploration, Inc.

Bidder	Cash Payment	Price / Acre	Rental	Oil	Gas	Other

319

MAIN PASS AREA, REVISED

SL 1961

Bik. 35

Bik. 34

Bik. 36

TR 34908
2,494.16 ± ACS.
SEPT., 2002

SL 16766

SL 6421

P. O. B.
X=2,620,600.00
Y= 278,080.00

SL 16768

Bik. 50

Bik. 51

GULF OF MEXICO

Bik. 49

SL 16769

Plaquemines Parish, Louisiana

3000' 0' 3000'

NAD 27 LAMBERT LA. SOUTH ZONE

TRACT 34909 - Portion of Block 36, Main Pass Area, Revised, Plaquemines Parish, Louisiana

All of the lands now or formerly constituting the beds and bottoms of all water bodies of every nature and description, and all islands and other lands formed by accretion, where allowed by law, or by reliction, and excepting tax adjudicated lands, belonging to the State of Louisiana and not presently under mineral lease on September 11, 2002, situated in Plaquemines Parish, Louisiana, and more particularly described as follows: Beginning at a point on the North line of Block 36, Main Pass Area, Revised, having Coordinates of X = 2,627,116.47 and Y = 292,830.00; thence South 7,375.00 feet to the Northeast corner of State Lease No. 16766 having Coordinates of X = 2,627,116.47 and Y = 285,455.00; thence West 5,916.47 feet along the North line of said State Lease No. 16766 to its Northwest corner having Coordinates of X = 2,621,200.00 and Y = 285,455.00; thence South 7,375.00 feet along the West line of said State Lease No. 16766 to its Southwest corner, also being a point on the South line of said Block 36 having Coordinates of X = 2,621,200.00 and Y = 278,080.00; thence West 600.00 feet along the South line of said Block 36 to its Southwest corner having Coordinates of X = 2,620,600.00 and Y = 278,080.00; thence North 14,750.00 feet along the West line of said Block 36 to its Northwest corner having Coordinates of X = 2,620,600.00 and Y = 292,830.00; thence East 6,516.47 feet along the North line of said Block 36 to the point of beginning, containing approximately **1,204.87 acres**, all as more particularly outlined on a plat on file in the Office of Mineral Resources, Department of Natural Resources, as provided by the applicant. All bearings, distances and coordinates are based on Louisiana Coordinate System of 1927, (North or South Zone), where applicable.

NOTE: The above description of the Tract nominated for lease has been provided and corrected, where required, exclusively by the nomination party. Any mineral lease selected from this Tract and awarded by the Louisiana State Mineral Board shall be without warranty of any kind, either express, implied, or statutory, including, but not limited to, the implied warranties of merchantability and fitness for a particular purpose. Should the mineral lease awarded by the Louisiana State Mineral Board be subsequently modified, cancelled or abrogated due to the existence of conflicting leases, operating agreements, private claims or other future obligations or conditions which may affect all or any portion of the leased Tract, it shall not relieve the Lessee of the obligation to pay any bonus due thereon to the Louisiana State Mineral Board, not shall the Louisiana State Mineral Board be obligated to refund any consideration paid by the Lessor prior to such modification, cancellation, or abrogation, including, but not limited to, bonuses, rentals and royalties.

NOTE: The State of Louisiana does hereby reserve, and this lease shall be subject to, the imprescriptible right of surface use in the nature of a servitude in favor of the Department of Natural Resources, including its Offices and Commissions, for the sole purpose of implementing, constructing, servicing and maintaining approved coastal zone management and/or restoration projects. Utilization of any and all rights derived

under this lease by the mineral lessee, its agents, successors or assigns, shall not interfere with nor hinder the reasonable surface use by the Department of Natural Resources, its Offices or Commissions, as herein above reserved.

Applicant: Cash River Exploration, Inc.

Bidder	Cash Payment	Price / Acre	Rental	Oil	Gas	Other

SL 1958, As Amended

Bik. 32

SL 2125

Bik. 31

322

Bik. 48

P. O. B.
X=2,627,116.47
Y= 292,830.00

SL 16929

SL 17295

SL 17242

SL 16930

SL 1961

TR 34909
1,204.87 ± ACS.
SEPT., 2002

Bik. 36

MAIN PASS AREA, REVISED

BRETON SOUND AREA

Bik. 35

SL 16766

Bik. 49

SL 16771

SL 14964, As Amended

GULF OF MEXICO

SL 14959, As Amended

SL 16772

SL 16768

Bik. 50

Bik. 49

SL 16770

Bik. 48

NAD 27
LAMBERT LA. SOUTH ZONE

Plaquemines Parish, Louisiana

3000' 0' 3000'

TRACT 34910 - Portion of Block 36, Main Pass Area, Revised, Plaquemines Parish, Louisiana

All of the lands now or formerly constituting the beds and bottoms of all water bodies of every nature and description, and all islands and other lands formed by accretion, where allowed by law, or by reliction, and excepting tax adjudicated lands, belonging to the State of Louisiana and not presently under mineral lease on September 11, 2002, situated in Plaquemines Parish, Louisiana, and more particularly described as follows: Beginning at a point on the North line of Block 36, Main Pass Area, Revised, having Coordinates of X = 2,627,116.47 and Y = 292,830.00; thence East 2,991.16 feet along the North line of said Block 36 to a point, also being the most Northerly Northwest corner of State Lease No. 16930 having Coordinates of X = 2,630,107.63 and Y = 292,830.00; thence along said State Lease No. 16930 the following courses: South 18 degrees 00 minutes 42 seconds West 1,201.34 feet, South 36 degrees 47 minutes 02 seconds West 927.12 feet, South 58 degrees 55 minutes 29 seconds East 1,763.01 feet, South 19 degrees 34 minutes 55 seconds East 805.59 feet, South 69 degrees 26 minutes 38 seconds East 2,392.32 feet, North 48 degrees 24 minutes 10 seconds East 1,310.46 feet and North 86 degrees 34 minutes 24 seconds East 1,171.09 feet to the most Easterly Southeast corner of said State Lease No. 16930, also being a point on the East line of said Block 36 having Coordinates of X = 2,635,350.00 and Y = 289,376.00; thence South 11,296.00 feet along the East line of said Block 36 to its Southeast corner having Coordinates of X = 2,635,350.00 and Y = 278,080.00; thence West 766.48 feet along the South line of said Block 36 to a point, also being the Southeast corner of State Lease No. 14964, as amended having Coordinates of X = 2,634,583.52 and Y = 278,080.00; thence North 5,933.52 feet along the East line of said State Lease No. 14964 to its Northeast corner having Coordinates of X = 2,634,583.52 and Y = 284,013.52; thence West 7,467.05 feet along the North line of said State Lease No. 14964 to its Northwest corner, also being a point on the East line of State Lease No. 16766 having Coordinates of X = 2,627,116.47 and Y = 284,013.52; thence North 1,441.48 feet along the East line of said State Lease No. 16766 to its Northeast corner having Coordinates of X = 2,627,116.47 and Y = 285,455.00; thence North 7,375.00 feet to the point of beginning, **LESS AND EXCEPT**, if any, that portion of State Lease No. 14964, as amended, that may lie within the above described tract, containing approximately **1,307.17 acres**, all as more particularly outlined on a plat on file in the Office of Mineral Resources, Department of Natural Resources, as provided by the applicant. All bearings, distances and coordinates are based on Louisiana Coordinate System of 1927, (North or South Zone), where applicable.

NOTE: The above description of the Tract nominated for lease has been provided and corrected, where required, exclusively by the nomination party. Any mineral lease selected from this Tract and awarded by the Louisiana State Mineral Board shall be without warranty of any kind, either express, implied, or statutory, including, but not limited to, the implied warranties of merchantability and fitness for a particular purpose. Should the mineral lease awarded by the Louisiana State Mineral

Board be subsequently modified, cancelled or abrogated due to the existence of conflicting leases, operating agreements, private claims or other future obligations or conditions which may affect all or any portion of the leased Tract, it shall not relieve the Lessee of the obligation to pay any bonus due thereon to the Louisiana State Mineral Board, not shall the Louisiana State Mineral Board be obligated to refund any consideration paid by the Lessor prior to such modification, cancellation, or abrogation, including, but not limited to, bonuses, rentals and royalties.

NOTE: The State of Louisiana does hereby reserve, and this lease shall be subject to, the imprescriptible right of surface use in the nature of a servitude in favor of the Department of Natural Resources, including its Offices and Commissions, for the sole purpose of implementing, constructing, servicing and maintaining approved coastal zone management and/or restoration projects. Utilization of any and all rights derived under this lease by the mineral lessee, its agents, successors or assigns, shall not interfere with nor hinder the reasonable surface use by the Department of Natural Resources, its Offices or Commissions, as herein above reserved.

Applicant: Cash River Exploration, Inc.

Bidder	Cash Payment	Price / Acre	Rental	Oil	Gas	Other

SL 17294

SL 12002, As Amended

325

GULF OF MEXICO

SL 2125

Bik. 31

SL 16929

SL 17295

SL 17296

P. O. B.
X=2,627,116.47
Y= 292,830.00

SL 17242

SL 16930

SL 17241

Bik. 36

TR 34910
1,307.17 ± ACS.
SEPT., 2002

Bik. 49

SL 16766

SL 14964, As Amended

SL 16771

BRETON SOUND AREA

MAIN PASS AREA, REVISED

SL 14959, As Amended

SL 16768

Bik. 49

SL 16770

SL 16772

Bik. 48

Plaquemines Parish, Louisiana

3000' 0' 3000'

NAD 27 LAMBERT LA. SOUTH ZONE

TRACT 34911 - Portion of Block 49, Breton Sound Area, Plaquemines Parish, Louisiana

All of the lands now or formerly constituting the beds and bottoms of all water bodies of every nature and description, and all islands and other lands formed by accretion, where allowed by law, or by reliction, and excepting tax adjudicated lands, belonging to the State of Louisiana and not presently under mineral lease on September 11, 2002, situated in Plaquemines Parish, Louisiana, and more particularly described as follows: Beginning at a point on the South line of Block 49, Breton Sound Area, also being the Southeast corner of State Lease No. 16771 having Coordinates of X = 2,640,050.00 and Y = 278,080.00; thence along the boundary of said State Lease No. 16771 the following courses: North 7,375.00 feet and West 4,700.00 feet to the Northwest corner of said State Lease No. 16771, also being a point on the West line of said Block 49 having Coordinates of X = 2,635,350.00 and Y = 285,455.00; thence North 7,375.00 feet along the West line of said Block 49 to its Northwest corner having Coordinates of X = 2,635,350.00 and Y = 292,830.00; thence East 801.00 feet along the North line of said Block 49 to a point, also being the Northwest corner of State Lease No. 17242 having Coordinates of X = 2,636,151.00 and Y = 292,830.00; thence along the boundary of said State Lease No. 17242 the following courses: South 1,639.00 feet, East 2,485.00 feet and North 1,639.00 feet to the Northeast corner of said State Lease No. 17242, also being a point on the North line of said Block 49 having Coordinates of X = 2,638,636.00 and Y = 292,830.00; thence East 520.00 feet along the North line of said Block 49 to a point, also being the Northwest corner of State Lease No. 17241 having Coordinates of X = 2,639,156.00 and Y = 292,830.00; thence along said State Lease No. 17241 the following courses: South 4,278.00 feet and East 3,525.00 feet to the Southeast corner of said State Lease No. 17241 having Coordinates of X = 2,642,681.00 and Y = 288,552.00; thence East 1,909.00 feet to a point on the West line of State Lease No. 17240 having Coordinates of X = 2,644,590.00 and Y = 288,552.00; thence South 1,782.00 feet along the West line of said State Lease No. 17240 to its Southwest corner having Coordinates of X = 2,644,590.00 and Y = 286,770.00; thence South 8,690.00 feet to a point on the South line of said Block 49 having Coordinates of X = 2,644,590.00 and Y = 278,080.00; thence West 4,540.00 feet along the South line of said Block 49 to the point of beginning, containing approximately **1,705.88 acres**, all as more particularly outlined on a plat on file in the Office of Mineral Resources, Department of Natural Resources, as provided by the applicant. All bearings, distances and coordinates are based on Louisiana Coordinate System of 1927, (North or South Zone), where applicable.

NOTE: The above description of the Tract nominated for lease has been provided and corrected, where required, exclusively by the nomination party. Any mineral lease selected from this Tract and awarded by the Louisiana State Mineral Board shall be without warranty of any kind, either express, implied, or statutory, including, but not limited to, the implied warranties of merchantability and fitness for a particular purpose. Should the mineral lease awarded by the Louisiana State Mineral

Board be subsequently modified, cancelled or abrogated due to the existence of conflicting leases, operating agreements, private claims or other future obligations or conditions which may affect all or any portion of the leased Tract, it shall not relieve the Lessee of the obligation to pay any bonus due thereon to the Louisiana State Mineral Board, not shall the Louisiana State Mineral Board be obligated to refund any consideration paid by the Lessor prior to such modification, cancellation, or abrogation, including, but not limited to, bonuses, rentals and royalties.

NOTE: The State of Louisiana does hereby reserve, and this lease shall be subject to, the imprescriptible right of surface use in the nature of a servitude in favor of the Department of Natural Resources, including its Offices and Commissions, for the sole purpose of implementing, constructing, servicing and maintaining approved coastal zone management and/or restoration projects. Utilization of any and all rights derived under this lease by the mineral lessee, its agents, successors or assigns, shall not interfere with nor hinder the reasonable surface use by the Department of Natural Resources, its Offices or Commissions, as herein above reserved.

Applicant: Cash River Exploration, Inc.

Bidder	Cash Payment	Price / Acre	Rental	Oil	Gas	Other

328

GULF OF MEXICO

BIK. 31

BIK. 48

BIK. 47

SL 16929

SL 17295

SL 17296

SL 17242

SL 17241

SL 16930

SL 17239

SL 17240

TR 34911
1,705.88 ± ACS.
SEPT., 2002

BIK. 36

BIK. 50

SL 14954, As Amended

MAIN PASS AREA, REVISED
BRETON SOUND AREA

SL 16771

BIK. 49

SL 14959, As Amended

BRETON SOUND AREA

MAIN PASS AREA, REVISED

P. O. B.
X=2,640,050.00
Y= 278,080.00

SL 16772

BIK. 48

SL 16773

SL 16774

SL 16770

BIK. 49

SL 16393
SL 16392

Plaquemines Parish, Louisiana

3000' 0' 3000'

NAD 27 LAMBERT LA. SOUTH ZONE

TRACT 34912 - Portion of Block 49, Breton Sound Area, Plaquemines Parish, Louisiana

All of the lands now or formerly constituting the beds and bottoms of all water bodies of every nature and description, and all islands and other lands formed by accretion, where allowed by law, or by reliction, and excepting tax adjudicated lands, belonging to the State of Louisiana and not presently under mineral lease on September 11, 2002, situated in Plaquemines Parish, Louisiana, and more particularly described as follows: Beginning at the Northeast corner of Block 49, Breton Sound Area, having Coordinates of X = 2,650,100.00 and Y = 292,830.00; thence South 890.00 feet along the East line of said Block 49 to a point, also being the Northeast corner of State Lease No. 17239 having Coordinates of X = 2,650,100.00 and Y = 291,940.00; thence along the boundary of said State Lease No. 17239 the following courses: West 2,429.00 feet, South 2,757.00 feet and East 2,429.00 feet to the Southeast corner of State Lease No. 17239, also being a point on the East line of said Block 49 having Coordinates of X = 2,650,100.00 and Y = 289,183.00; thence South 11,103.00 feet along the East line of said Block 49 to its Southeast corner having Coordinates of X = 2,650,100.00 and Y = 278,080.00; thence West 5,510.00 feet along the South line of said Block 49 to a point having Coordinates of X = 2,644,590.00 and Y = 278,080.00; thence North 8,690.00 feet to the Southwest corner of State Lease No. 17240 having Coordinates of X = 2,644,590.00 and Y = 286,770.00; thence along the boundary of said State Lease No. 17240 the following courses: East 2,696.00 feet, North 3,021.00 feet, West 2,696.00 feet and South 1,239.00 feet to a point on the West line of said State Lease No. 17240 having Coordinates of X = 2,644,590.00 and Y = 288,552.00; thence West 1,909.00 feet to the Southeast corner of State Lease No. 17241 having Coordinates of X = 2,642,681.00 and Y = 288,552.00; thence North 4,278.00 feet along the East line of said State Lease No. 17241 to its Northeast corner having Coordinates of X = 2,642,681.00 and Y = 292,830.00; thence East 7,419.00 feet along the North line of said Block 40 to the point of beginning, containing approximately **1,712.53 acres**, all as more particularly outlined on a plat on file in the Office of Mineral Resources, Department of Natural Resources, as provided by the applicant. All bearings, distances and coordinates are based on Louisiana Coordinate System of 1927, (North or South Zone), where applicable.

NOTE: The above description of the Tract nominated for lease has been provided and corrected, where required, exclusively by the nomination party. Any mineral lease selected from this Tract and awarded by the Louisiana State Mineral Board shall be without warranty of any kind, either express, implied, or statutory, including, but not limited to, the implied warranties of merchantability and fitness for a particular purpose. Should the mineral lease awarded by the Louisiana State Mineral Board be subsequently modified, cancelled or abrogated due to the existence of conflicting leases, operating agreements, private claims or other future obligations or conditions which may affect all or any portion of the leased Tract, it shall not relieve the Lessee of the obligation to pay any bonus due thereon to the Louisiana State Mineral Board, not shall

the Louisiana State Mineral Board be obligated to refund any consideration paid by the Lessor prior to such modification, cancellation, or abrogation, including, but not limited to, bonuses, rentals and royalties.

NOTE: The State of Louisiana does hereby reserve, and this lease shall be subject to, the imprescriptible right of surface use in the nature of a servitude in favor of the Department of Natural Resources, including its Offices and Commissions, for the sole purpose of implementing, constructing, servicing and maintaining approved coastal zone management and/or restoration projects. Utilization of any and all rights derived under this lease by the mineral lessee, its agents, successors or assigns, shall not interfere with nor hinder the reasonable surface use by the Department of Natural Resources, its Offices or Commissions, as herein above reserved.

Applicant: Cash River Exploration, Inc.

Bidder	Cash Payment	Price / Acre	Rental	Oil	Gas	Other

GULF OF MEXICO

331
Bik. 47

SL 16797

P. O. B.
X=2,650,100.00
Y=292,830.00

Bik. 48

SL 17295

SL 17296

SL 17242

SL 17241

SL 17239

SL 17240

Bik. 49

Bik. 50

TR 34912
1,712.53 ± ACS.
SEPT., 2002

SL 16771

BRETON SOUND AREA
MAIN PASS AREA, REVISED

SL 16393

SL 16392

Bik. 47

SL 16772

Bik. 48

SL 16773

SL 16774

SL 16570

Plaquemines Parish, Louisiana

3000' 0' 3000'

NAD 27 LAMBERT LA. SOUTH ZONE

TRACT 34913 - Portion of Block 51, Main Pass Area, Revised, Plaquemines Parish, Louisiana

All of the lands now or formerly constituting the beds and bottoms of all water bodies of every nature and description, and all islands and other lands formed by accretion, where allowed by law, or by reliction, and excepting tax adjudicated lands, belonging to the State of Louisiana and not presently under mineral lease on September 11, 2002, situated in Plaquemines Parish, Louisiana, and more particularly described as follows: Beginning at the Northeast corner of Block 51, Main Pass Area, Revised, having Coordinates of X = 2,605,850.00 and Y = 278,080.00; thence South 7,375.00 along the East line of said Block 51 to a point having Coordinates of X = 2,605,850.00 and Y = 270,705.00; thence West 5,648.14 feet to a point having Coordinates of X = 2,600,201.86 and Y = 270,705.00; thence North 5,125.00 feet to a point on the Southerly boundary line of State Lease No. 6420 having Coordinates of X = 2,600,201.86 and Y = 275,830.00; thence along said State Lease No. 6420 the following courses: East 18.13 feet, North 85 degrees 41 minutes 44 seconds East 932.63 feet, North 74 degrees 52 minutes 34 seconds East 383.28 feet, North 57 degrees 59 minutes 41 seconds East 188.68 feet, North 46 degrees 23 minutes 50 seconds East 290.00 feet, North 26 degrees 06 minutes 50 seconds East 567.98 feet, North 17 degrees 48 minutes 07 seconds East 1,144.81 feet and North 29 degrees 35 minutes 32 seconds East 207.01 feet to the most Easterly Northeast corner of said State Lease No. 6420, also being a point on the North line of said Block 51 having Coordinates of X = 2,602,592.22 and Y = 278,080.00; thence East 3,257.78 along the North line of said Block 51 to the point of beginning, containing approximately **858.64 acres**, all as more particularly outlined on a plat on file in the Office of Mineral Resources, Department of Natural Resources, as provided by the applicant. All bearings, distances and coordinates are based on Louisiana Coordinate System of 1927, (North or South Zone), where applicable.

NOTE: The above description of the Tract nominated for lease has been provided and corrected, where required, exclusively by the nomination party. Any mineral lease selected from this Tract and awarded by the Louisiana State Mineral Board shall be without warranty of any kind, either express, implied, or statutory, including, but not limited to, the implied warranties of merchantability and fitness for a particular purpose. Should the mineral lease awarded by the Louisiana State Mineral Board be subsequently modified, cancelled or abrogated due to the existence of conflicting leases, operating agreements, private claims or other future obligations or conditions which may affect all or any portion of the leased Tract, it shall not relieve the Lessee of the obligation to pay any bonus due thereon to the Louisiana State Mineral Board, nor shall the Louisiana State Mineral Board be obligated to refund any consideration paid by the Lessor prior to such modification, cancellation, or abrogation, including, but not limited to, bonuses, rentals and royalties.

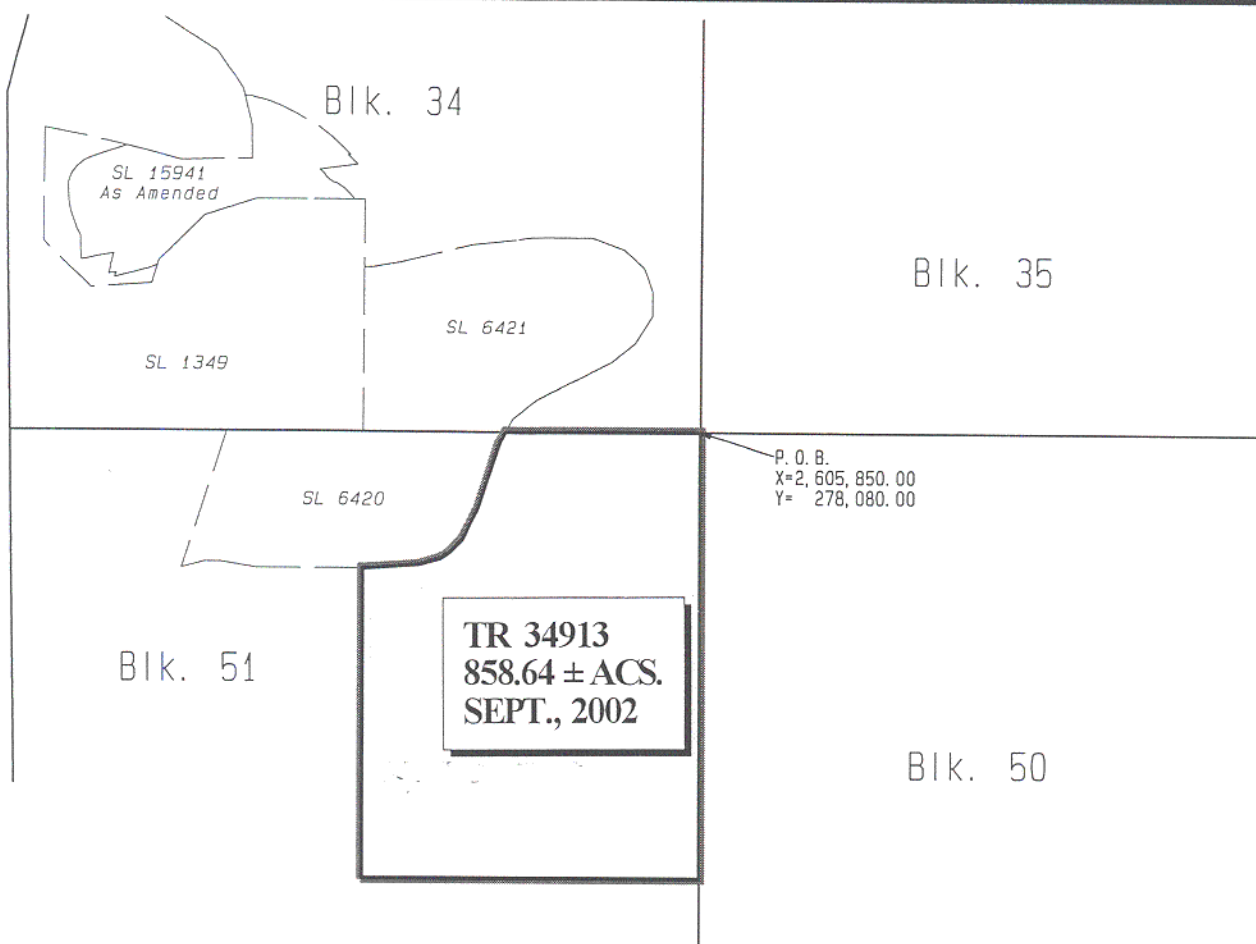
NOTE: The Department of Wildlife and Fisheries has designated certain areas in the coastal waters of the State of Louisiana as Oyster Seed Bed Areas. The exact location of those Seed Bed Areas must be obtained from

the Department of Wildlife and Fisheries and any work done under a mineral lease from the State of Louisiana may necessarily be conducted in conformity with the rules and regulations promulgated by the said Department of Wildlife and Fisheries for Oyster Seed Bed Areas.

NOTE: The State of Louisiana does hereby reserve, and this lease shall be subject to, the imprescriptible right of surface use in the nature of a servitude in favor of the Department of Natural Resources, including its Offices and Commissions, for the sole purpose of implementing, constructing, servicing and maintaining approved coastal zone management and/or restoration projects. Utilization of any and all rights derived under this lease by the mineral lessee, its agents, successors or assigns, shall not interfere with nor hinder the reasonable surface use by the Department of Natural Resources, its Offices or Commissions, as herein above reserved.

Applicant: Cash River Exploration, Inc.

Bidder	Cash Payment	Price / Acre	Rental	Oil	Gas	Other



MAIN PASS AREA, REVISED

GULF OF MEXICO

PLAT ACCOMPANYING APPLICATION
FOR STATE LEASE
Plaquemines Parish, Louisiana

3000' 0' 3000'

NAD 27 LAMBERT LA. SOUTH ZONE

TRACT 34914 - Portion of Block 50, Main Pass Area, Revised, Plaquemines Parish, Louisiana

All of the lands now or formerly constituting the beds and bottoms of all water bodies of every nature and description, and all islands and other lands formed by accretion, where allowed by law, or by reliction, and excepting tax adjudicated lands, belonging to the State of Louisiana and not presently under mineral lease on September 11, 2002, situated in Plaquemines Parish, Louisiana, and more particularly described as follows: Beginning at the Northeast corner of Block 50, Main Pass Area, Revised, having Coordinates of X = 2,620,600.00 and Y = 278,080.00; thence South 7,375.00 feet along the East line of said Block 50 to a point having Coordinates of X = 2,620,600.00 and Y = 270,705.00; thence West 14,750.00 feet to a point on the West line of said Block 50 having Coordinates of X = 2,605,850.00 and Y = 270,705.00; thence North 7,375.00 feet along the West line of said Block 50 to its Northwest corner having Coordinates of X = 2,605,850.00 and Y = 278,080.00; thence East 14,750.00 feet along the North line of said Block 50 to the point of beginning, containing approximately **2,497.27 acres**, all as more particularly outlined on a plat on file in the Office of Mineral Resources, Department of Natural Resources, as provided by the applicant. All bearings, distances and coordinates are based on Louisiana Coordinate System of 1927, (North or South Zone), where applicable.

NOTE: The above description of the Tract nominated for lease has been provided and corrected, where required, exclusively by the nomination party. Any mineral lease selected from this Tract and awarded by the Louisiana State Mineral Board shall be without warranty of any kind, either express, implied, or statutory, including, but not limited to, the implied warranties of merchantability and fitness for a particular purpose. Should the mineral lease awarded by the Louisiana State Mineral Board be subsequently modified, cancelled or abrogated due to the existence of conflicting leases, operating agreements, private claims or other future obligations or conditions which may affect all or any portion of the leased Tract, it shall not relieve the Lessee of the obligation to pay any bonus due thereon to the Louisiana State Mineral Board, nor shall the Louisiana State Mineral Board be obligated to refund any consideration paid by the Lessor prior to such modification, cancellation, or abrogation, including, but not limited to, bonuses, rentals and royalties.

NOTE: The Department of Wildlife and Fisheries has designated certain areas in the coastal waters of the State of Louisiana as Oyster Seed Bed Areas. The exact location of those Seed Bed Areas must be obtained from the Department of Wildlife and Fisheries and any work done under a mineral lease from the State of Louisiana may necessarily be conducted in conformity with the rules and regulations promulgated by the said Department of Wildlife and Fisheries for Oyster Seed Bed Areas.

NOTE: The State of Louisiana does hereby reserve, and this lease shall be subject to, the imprescriptible right of surface use in the nature of a servitude in favor of the Department of Natural Resources, including its

Offices and Commissions, for the sole purpose of implementing, constructing, servicing and maintaining approved coastal zone management and/or restoration projects. Utilization of any and all rights derived under this lease by the mineral lessee, its agents, successors or assigns, shall not interfere with nor hinder the reasonable surface use by the Department of Natural Resources, its Offices or Commissions, as herein above reserved.

Applicant: Cash River Exploration, Inc.

Bidder	Cash Payment	Price / Acre	Rental	Oil	Gas	Other

BIK. 34

SL 16999

SL 17001

BIK. 35

337

SL 16766

BIK. 36

SL 6421

P. O. B.
X=2,620,600.00
Y= 278,080.00

SL 17000

SL 6420

SL 16768

TR 34914
2,497.27 ± ACS.
SEPT., 2002

BIK. 51

SL 16769

BIK. 49

BIK. 50

MAIN PASS AREA, REVISED

GULF OF MEXICO

Plaquemines Parish, Louisiana

3000' 0' 3000'

NAD 27 LAMBERT LA. SOUTH ZONE

TRACT 34915 - Portion of Block 48, Main Pass Area, Revised, Plaquemines Parish, Louisiana

All of the lands now or formerly constituting the beds and bottoms of all water bodies of every nature and description, and all islands and other lands formed by accretion, where allowed by law, or by reliction, and excepting tax adjudicated lands, belonging to the State of Louisiana and not presently under mineral lease on September 11, 2002, situated in Plaquemines Parish, Louisiana, and more particularly described as follows: Beginning at a point on the North line of Block 48, Main Pass Area, Revised, also being the Northeast corner of State Lease No. 16772 having Coordinates of X = 2,640,050.00 and Y = 278,080.00; thence East 5,800.00 feet along the North line of said Block 48 to a point, also being the most Northerly Northwest corner of State Lease No. 16773 having Coordinates of X = 2,645,850.00 and Y = 278,080.00; thence South 52 degrees 07 minutes 30 seconds West 1,900.29 feet along the West line of said State Lease No. 16773 to its most Westerly Northwest corner having Coordinates of X = 2,644,350.00 and Y = 276,913.33; thence South 7,533.33 feet along the West line of said State Lease No. 16773 to its Southwest corner, also being a point on the North line of State Lease No. 16924 having Coordinates of X = 2,644,350.00 and Y = 269,380.00; thence West 1,100.00 feet along the North line of said State Lease No. 16924 to its Northwest corner having Coordinates of X = 2,643,250.00 and Y = 269,380.00; thence West 3,200.00 feet to the Southeast corner of said State Lease No. 16772 having Coordinates of X = 2,640,050.00 and Y = 269,380.00; thence North 8,700.00 feet along the East line of said State Lease No. 16772 to the point of beginning, containing approximately **878.90 acres**, all as more particularly outlined on a plat on file in the Office of Mineral Resources, Department of Natural Resources, as provided by the applicant. All bearings, distances and coordinates are based on Louisiana Coordinate System of 1927, (North or South Zone), where applicable.

NOTE: The above description of the Tract nominated for lease has been provided and corrected, where required, exclusively by the nomination party. Any mineral lease selected from this Tract and awarded by the Louisiana State Mineral Board shall be without warranty of any kind, either express, implied, or statutory, including, but not limited to, the implied warranties of merchantability and fitness for a particular purpose. Should the mineral lease awarded by the Louisiana State Mineral Board be subsequently modified, cancelled or abrogated due to the existence of conflicting leases, operating agreements, private claims or other future obligations or conditions which may affect all or any portion of the leased Tract, it shall not relieve the Lessee of the obligation to pay any bonus due thereon to the Louisiana State Mineral Board, nor shall the Louisiana State Mineral Board be obligated to refund any consideration paid by the Lessor prior to such modification, cancellation, or abrogation, including, but not limited to, bonuses, rentals and royalties.

NOTE: The State of Louisiana does hereby reserve, and this lease shall be subject to, the imprescriptible right of surface use in the nature of a servitude in favor of the Department of Natural Resources, including its

Offices and Commissions, for the sole purpose of implementing, constructing, servicing and maintaining approved coastal zone management and/or restoration projects. Utilization of any and all rights derived under this lease by the mineral lessee, its agents, successors or assigns, shall not interfere with nor hinder the reasonable surface use by the Department of Natural Resources, its Offices or Commissions, as herein above reserved.

Applicant: Cash River Exploration, Inc.

Bidder	Cash Payment	Price / Acre	Rental	Oil	Gas	Other

Bik. 36

SL 14964
As Amended

SL 16771

Bik. 49

340
Bik. 11

MAIN PASS AREA, REVISED
BRETON SOUND AREA

SL 14959
As Amended

P. O. B.
X=2,640,050.00
Y= 278,080.00

BRETON SOUND AREA
MAIN PASS AREA, REVISED

SL 16772

TR 34915
878.90 ± ACS.
SEPT., 2002

SL 16773

SL 16774

SL 16770

Bik. 49

Bik. 47

SL 16975

Bik. 48

SL 16924

SL 16370

SL 1268

GULF OF MEXICO

SL 16925

SL 14646

Bik. 52

NAD 27
LAMBERT LA. SOUTH ZONE

Plaquemines Parish, Louisiana

3000' 0' 3000'