

TRACT 34886 - Portion of Block 23, Main Pass Area, Revised, Plaquemines Parish, Louisiana

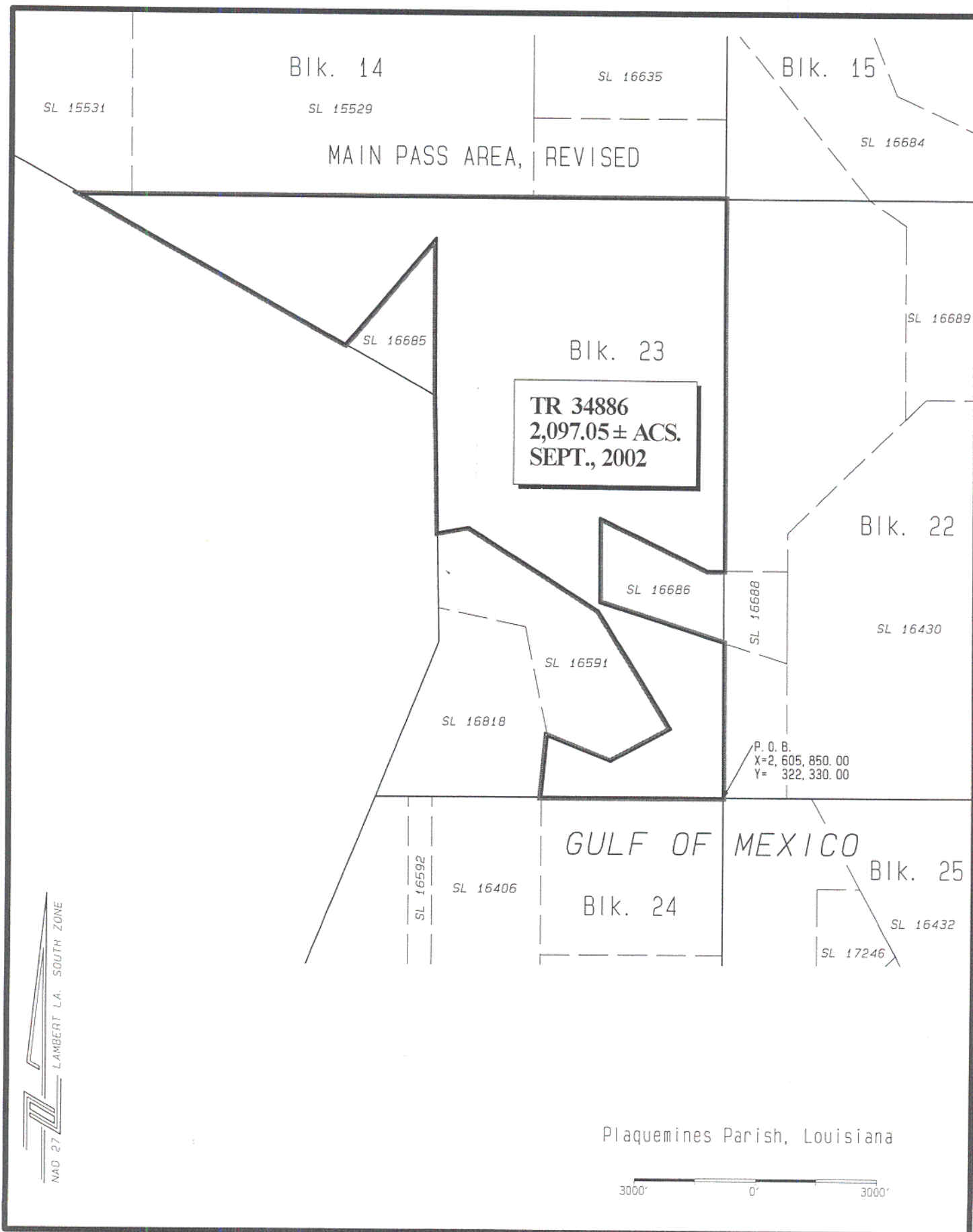
All of the lands now or formerly constituting the beds and bottoms of all water bodies of every nature and description, and all islands and other lands formed by accretion, where allowed by law, or by reliction, and excepting tax adjudicated lands, belonging to the State of Louisiana and not presently under mineral lease on September 11, 2002, situated in Plaquemines Parish, Louisiana, and more particularly described as follows: Beginning at the Southeast corner of Block 23, Main Pass Area, Revised, having Coordinates of X = 2,605,850.00 and Y = 322,330.00; thence West 4,500.00 feet along the South line of said Block 23 to a point, also being the most Southerly Southeast corner of State Lease No. 16818 having Coordinates of X = 2,601,350.00 and Y = 322,330.00; thence North 05 degrees 44 minutes 28 seconds East 1,508.08 feet along the boundary of said State Lease No. 16818 to a corner, also being the most Westerly Southwest corner of State Lease No. 16591 having Coordinates of X = 2,601,500.86 and Y = 323,830.52; thence along the boundary of said State Lease No. 16591 the following courses: South 68 degrees 02 minutes 22 seconds East 1,671.26 feet, North 61 degrees 55 minutes 39 seconds East 1,700.00 feet, North 31 degrees 37 minutes 27 seconds West 3,434.48 feet, North 57 degrees 21 minutes 19 seconds West 3,800.33 feet and South 80 degrees 00 minutes 00 seconds West approximately 790 feet to a point on the East line of State Lease No. 195, as amended; thence Northwesterly approximately 3,359 feet to a point on the East line of said State Lease No. 195, also being the Southeast corner of State Lease No. 16685 having Coordinates of X = 2,598,710.03 and Y = 332,201.62; thence along the boundary of said State Lease No. 16685 the following courses: North 3,888.38 feet and South 40 degrees 50 minutes 49 seconds West 3,480.00 feet to its Southwest corner also being a point on the Eastern boundary of said State Lease No. 195 having Coordinates of X = 2,596,433.97 and Y = 333,457.52; thence Northwesterly along the boundary of said State Lease 195 to a point on the North line of said Block 23 having Coordinates of X = 2,589,852.66 and Y = 337,080.00; thence East 15,997.34 feet along the North line of said Block 23 to its Northeast corner having Coordinates of X = 2,605,850.00 and Y = 337,080.00; thence South 9,150.00 feet along the East line of said Block 23 to a point, also being the most Easterly Northeast corner of State Lease No. 16686 having Coordinates of X = 2,605,850.00 and Y = 327,930.00; thence along the boundary of said State Lease No. 16686 the following courses: West 390.00 feet, North 64 degrees 12 minutes 25 seconds West 2,987.66 feet, South 2,100.00 feet and South 72 degrees 18 minutes 24 seconds East 3,232.93 feet to the Southeast corner of said State Lease No. 16686, also being a point on the East line of said Block 23 having Coordinates of X = 2,605,850.00 and Y = 326,147.44; thence South 3,817.44 feet along the East line of said Block 23 to the point of beginning, containing approximately **2,097.05 acres**, all as more particularly outlined on a plat on file in the Office of Mineral Resources, Department of Natural Resources, as provided by the applicant. All bearings, distances and coordinates are based on Louisiana Coordinate System of 1927, (North or South Zone), where applicable.

NOTE: The above description of the Tract nominated for lease has been provided and corrected, where required, exclusively by the nomination party. Any mineral lease selected from this Tract and awarded by the Louisiana State Mineral Board shall be without warranty of any kind, either express, implied, or statutory, including, but not limited to, the implied warranties of merchantability and fitness for a particular purpose. Should the mineral lease awarded by the Louisiana State Mineral Board be subsequently modified, cancelled or abrogated due to the existence of conflicting leases, operating agreements, private claims or other future obligations or conditions which may affect all or any portion of the leased Tract, it shall not relieve the Lessee of the obligation to pay any bonus due thereon to the Louisiana State Mineral Board, nor shall the Louisiana State Mineral Board be obligated to refund any consideration paid by the Lessor prior to such modification, cancellation, or abrogation, including, but not limited to, bonuses, rentals and royalties.

NOTE: The State of Louisiana does hereby reserve, and this lease shall be subject to, the imprescriptible right of surface use in the nature of a servitude in favor of the Department of Natural Resources, including its Offices and Commissions, for the sole purpose of implementing, constructing, servicing and maintaining approved coastal zone management and/or restoration projects. Utilization of any and all rights derived under this lease by the mineral lessee, its agents, successors or assigns, shall not interfere with nor hinder the reasonable surface use by the Department of Natural Resources, its Offices or Commissions, as herein above reserved.

Applicant: Cash River Exploration, Inc.

Bidder	Cash Payment	Price / Acre	Rental	Oil	Gas	Other



TRACT 34887 - Portion of Block 22, Main Pass Area, Revised, Plaquemines Parish, Louisiana

All of the lands now or formerly constituting the beds and bottoms of all water bodies of every nature and description, and all islands and other lands formed by accretion, where allowed by law, or by reliction, and excepting tax adjudicated lands, belonging to the State of Louisiana and not presently under mineral lease on September 11, 2002, situated in Plaquemines Parish, Louisiana, and more particularly described as follows: Beginning at the Northwest corner of Block 22, Main Pass Area, Revised, having Coordinates of X = 2,605,850.00 and Y = 337,080.00; thence East 3,575.00 feet along the North line of said Block 22 to a point, also being the most Northerly Northwest corner of State Lease No. 16689 having Coordinates of X = 2,609,425.00 and Y = 337,080.00; thence along the boundary of said State Lease No. 16689 the following courses: South 55 degrees 13 minutes 20 seconds East 1,095.73 feet and South 4,773.74 feet to the most Southerly Southwest corner of said State Lease No. 16689, also being a point on the boundary of State Lease No. 16430 having Coordinates of X = 2,610,325.00 and Y = 331,681.26; thence South 45 degrees 59 minutes 32 seconds West 4,032.00 feet along the boundary of said State Lease No. 16430 to its most Westerly Northwest corner having Coordinates of X = 2,607,425.00 and Y = 328,880.00; thence South 950.00 feet along the West line of said State Lease No. 16430 to a point, also being the Northeast corner of State Lease No. 16688 having Coordinates of X = 2,607,425.00 and Y = 327,930.00; thence West 1,575.00 feet along the North line of said State Lease No. 16688 to its Northwest corner, also being a point on the West line of said Block 22 having Coordinates of X = 2,605,850.00 and Y = 327,930.00; thence North 9,150.00 feet along the West line of said Block 22 to the point of beginning, containing approximately **777.05 acres**, all as more particularly outlined on a plat on file in the Office of Mineral Resources, Department of Natural Resources, as provided by the applicant. All bearings, distances and coordinates are based on Louisiana Coordinate System of 1927, (North or South Zone), where applicable.

NOTE: The above description of the Tract nominated for lease has been provided and corrected, where required, exclusively by the nomination party. Any mineral lease selected from this Tract and awarded by the Louisiana State Mineral Board shall be without warranty of any kind, either express, implied, or statutory, including, but not limited to, the implied warranties of merchantability and fitness for a particular purpose. Should the mineral lease awarded by the Louisiana State Mineral Board be subsequently modified, cancelled or abrogated due to the existence of conflicting leases, operating agreements, private claims or other future obligations or conditions which may affect all or any portion of the leased Tract, it shall not relieve the Lessee of the obligation to pay any bonus due thereon to the Louisiana State Mineral Board, nor shall the Louisiana State Mineral Board be obligated to refund any consideration paid by the Lessor prior to such modification, cancellation, or abrogation, including, but not limited to, bonuses, rentals and royalties.

NOTE: The State of Louisiana does hereby reserve, and this lease shall be subject to, the imprescriptible right of surface use in the nature of a servitude in favor of the Department of Natural Resources, including its Offices and Commissions, for the sole purpose of implementing, constructing, servicing and maintaining approved coastal zone management and/or restoration projects. Utilization of any and all rights derived under this lease by the mineral lessee, its agents, successors or assigns, shall not interfere with nor hinder the reasonable surface use by the Department of Natural Resources, its Offices or Commissions, as herein above reserved.

Applicant: Cash River Exploration, Inc.

Bidder	Cash Payment	Price / Acre	Rental	Oil	Gas	Other

254

MAIN PASS AREA, REVISED

GULF OF MEXICO

SL 15529
Bik. 14

SL 16391

SL 16635

SL 16408

SL 16684

Bik. 15

P. O. B.
X=2,605,850.00
Y= 337,080.00

SL 16687

SL 16685

TR 34887
777.05 ± ACS.
SEPT., 2002

SL 16689

Bik. 23

Bik. 22

SL 16686

SL 16688

SL 16430

SL 16591

SL 16818

SL 16592

SL 16406

Bik. 24

SL 16432

Bik. 25

SL 16931

SL 16431

NAD 27 LAMBERT LA. SOUTH ZONE

Plaquemines Parish, Louisiana

3000' 0' 3000'

TRACT 34888 - Portion of Block 22, Main Pass Area, Revised, Plaquemines Parish, Louisiana

All of the lands now or formerly constituting the beds and bottoms of all water bodies of every nature and description, and all islands and other lands formed by accretion, where allowed by law, or by reliction, and excepting tax adjudicated lands, belonging to the State of Louisiana and not presently under mineral lease on September 11, 2002, situated in Plaquemines Parish, Louisiana, and more particularly described as follows: Beginning at the Northeast corner of Block 22, Main Pass Area, Revised, having Coordinates of X = 2,620,600.00 and Y = 337,080.00; thence South 11,742.75 feet along the East line of said Block 22 to a point, also being the Northeast corner of State Lease No. 16931 having Coordinates of X = 2,620,600.00 and Y = 325,337.25; thence North 86 degrees 41 minutes 52 seconds West 3,037.50 feet along the North line of said State Lease No. 16931 to its Northwest corner, also being a point an Eastern boundary of State Lease No. 16431 having Coordinates of X = 2,617,567.54 and Y = 325,512.22; thence North 36 degrees 16 minutes 18 seconds West 7,340.15 feet to the most Northerly corner of State Lease No. 16431, also being a point on the East line of State Lease No. 16430 having Coordinates of X = 2,613,225.00 and Y = 331,430.00; thence North 734.22 feet along the East line of said State Lease No. 16430 to its Northeast corner having Coordinates of X = 2,613,225.00 and Y = 332,164.22; thence West 500.00 feet along the North line of said State Lease No. 16431 to a point, also being the Southeast corner of State Lease No. 16689 having Coordinates of X = 2,612,725.00 and Y = 332,164.22; thence North 4,915.78 feet along the East line of said State Lease No. 16689 to its Northeast corner, also being a point on the North line of said Block 22 having Coordinates of X = 2,612,725.00 and Y = 337,080.00; thence East 7,875.00 feet along the North line of said Block 22 to the point of beginning, containing approximately **1,726.04 acres**, all as more particularly outlined on a plat on file in the Office of Mineral Resources, Department of Natural Resources, as provided by the applicant. All bearings, distances and coordinates are based on Louisiana Coordinate System of 1927, (North or South Zone), where applicable.

NOTE: The above description of the Tract nominated for lease has been provided and corrected, where required, exclusively by the nomination party. Any mineral lease selected from this Tract and awarded by the Louisiana State Mineral Board shall be without warranty of any kind, either express, implied, or statutory, including, but not limited to, the implied warranties of merchantability and fitness for a particular purpose. Should the mineral lease awarded by the Louisiana State Mineral Board be subsequently modified, cancelled or abrogated due to the existence of conflicting leases, operating agreements, private claims or other future obligations or conditions which may affect all or any portion of the leased Tract, it shall not relieve the Lessee of the obligation to pay any bonus due thereon to the Louisiana State Mineral Board, nor shall the Louisiana State Mineral Board be obligated to refund any consideration paid by the Lessor prior to such modification, cancellation, or abrogation, including, but not limited to, bonuses, rentals and royalties.

NOTE: The State of Louisiana does hereby reserve, and this lease shall be subject to, the imprescriptible right of surface use in the nature of a servitude in favor of the Department of Natural Resources, including its Offices and Commissions, for the sole purpose of implementing, constructing, servicing and maintaining approved coastal zone management and/or restoration projects. Utilization of any and all rights derived under this lease by the mineral lessee, its agents, successors or assigns, shall not interfere with nor hinder the reasonable surface use by the Department of Natural Resources, its Offices or Commissions, as herein above reserved.

Applicant: Cash River Exploration, Inc.

Bidder	Cash Payment	Price / Acre	Rental	Oil	Gas	Other

257

MAIN PASS AREA, REVISED
GULF OF MEXICO

Bik. 15

Bik. 16

P. O. B.
X=2,620,600.00
Y= 337,080.00

TR 34888
1,726.04 ± ACS.
SEPT., 2002

Bik. 21

SL 17247

Bik. 22

SL 16430

SL 16431

SL 16931

SL 16932

SL 15536

Bik. 25

SL 16432

Bik. 26

SL 16933

Plaquemines Parish, Louisiana

3000' 0' 3000'

SL 16688

SL 16684

SL 16689

NAD 27 LAMBERT LA. SOUTH ZONE

TRACT 34889 - Portion of Block 21, Main Pass Area, Revised, Plaquemines Parish, Louisiana

All of the lands now or formerly constituting the beds and bottoms of all water bodies of every nature and description, and all islands and other lands formed by accretion, where allowed by law, or by reliction, and excepting tax adjudicated lands, belonging to the State of Louisiana and not presently under mineral lease on September 11, 2002, situated in Plaquemines Parish, Louisiana, and more particularly described as follows: Beginning at the Northwest corner of Block 21, Main Pass Area, Revised, having Coordinates of X = 2,620,600.00 and Y = 337,080.00; thence East 14,750.00 feet along the North line of said Block 21 to its Northeast corner having Coordinates of X = 2,635,350.00 and Y = 337,080.00; thence South 1,900.00 along the East line of said Block 21 to a point, also being a point on the Northern boundary of State Lease No. 4708, as amended having Coordinates of X = 2,635,350.00 and Y = 335,180.00; thence along the boundary of said State Lease No. 4708 the following courses: South 68 degrees 11 minutes 55 seconds West 2,154.07 feet, South 63 degrees 26 minutes 06 seconds West 642.87 feet, South 63 degrees 26 minutes 06 seconds West 475.16 feet, South 57 degrees 59 minutes 41 seconds West 943.40 feet, South 45 degrees 00 minutes 00 seconds West 707.11 feet, South 30 degrees 57 minutes 50 seconds West 583.10 feet, South 21 degrees 48 minutes 05 seconds West 538.52 feet and South 00 degrees 00 minutes 03 seconds West 366.94 feet to a point on the North line of State Lease No. 15536 having Coordinates of X = 2,630,549.99 and Y = 331,513.05; thence West 2,574.99 feet along the North line of said State Lease No. 15536 to its Northwest corner having Coordinates of X = 2,627,975.00 and Y = 331,513.05; thence South 847.05 feet along the West line of said State Lease No. 15536 to a point, also being the most Easterly Northeast corner of State Lease No. 17247 having Coordinates of X = 2,627,975.00 and Y = 330,666.00; thence along the boundary of said State Lease No. 17247 the following courses: West 875.00 feet, North 19 degrees 25 minutes 08 seconds West 3,609.32 feet, West 3,180.00 feet, South 4,800.00 feet and South 24 degrees 23 minutes 24 seconds East 4,572.03 feet to the most Southerly Southwest corner of said State Lease No. 17247, also being the Northeast corner of State Lease No. 16932 having Coordinates of X = 2,624,608.00 and Y = 325,106.00; thence North 86 degrees 41 minutes 52 seconds West 4,014.67 feet along the North line of said State Lease No. 16932 to its Northwest corner, also being a point on the West line of said Block 21 having Coordinates of X = 2,620,600.00 and Y = 325,337.25; thence North 11,742.75 feet along the West line of said Block 21 to the point of beginning, containing approximately **1,805.23 acres**, all as more particularly outlined on a plat on file in the Office of Mineral Resources, Department of Natural Resources, as provided by the applicant. All bearings, distances and coordinates are based on Louisiana Coordinate System of 1927, (North or South Zone), where applicable.

NOTE: The above description of the Tract nominated for lease has been provided and corrected, where required, exclusively by the nomination party. Any mineral lease selected from this Tract and awarded by the Louisiana State Mineral Board shall be without warranty of any kind,

either express, implied, or statutory, including, but not limited to, the implied warranties of merchantability and fitness for a particular purpose. Should the mineral lease awarded by the Louisiana State Mineral Board be subsequently modified, cancelled or abrogated due to the existence of conflicting leases, operating agreements, private claims or other future obligations or conditions which may affect all or any portion of the leased Tract, it shall not relieve the Lessee of the obligation to pay any bonus due thereon to the Louisiana State Mineral Board, not shall the Louisiana State Mineral Board be obligated to refund any consideration paid by the Lessor prior to such modification, cancellation, or abrogation, including, but not limited to, bonuses, rentals and royalties.

NOTE: The State of Louisiana does hereby reserve, and this lease shall be subject to, the imprescriptible right of surface use in the nature of a servitude in favor of the Department of Natural Resources, including its Offices and Commissions, for the sole purpose of implementing, constructing, servicing and maintaining approved coastal zone management and/or restoration projects. Utilization of any and all rights derived under this lease by the mineral lessee, its agents, successors or assigns, shall not interfere with nor hinder the reasonable surface use by the Department of Natural Resources, its Offices or Commissions, as herein above reserved.

Applicant: Cash River Exploration, Inc.

Bidder	Cash Payment	Price / Acre	Rental	Oil	Gas	Other

260

Bik. 15

Bik. 16

SL 16895

Bik. 17

P. O. B.
X=2,620,600.00
Y=337,080.00

TR 34889
1,805.23 ± ACS.
SEPT., 2002

SL 17301

Bik. 22

Bik. 32

SL 17247

SL 4708
As Amended

SL 1227
As Amended

Bik. 21

SL 15536

MAIN PASS AREA, REVISED
BRETON SOUND AREA

GULF OF MEXICO

SL 16431

SL 16931

SL 16932

SL 16933

Bik. 25

Bik. 26

SL 16935

SL 17384

Bik. 33

SL 17385

Plaquemines Parish, Louisiana

3000' 0' 3000'

NAD 27
LAMBERT LA. SOUTH ZONE

TRACT 34890 - Portion of Block 22, Main Pass Area, Revised, Plaquemines Parish, Louisiana

All of the lands now or formerly constituting the beds and bottoms of all water bodies of every nature and description, and all islands and other lands formed by accretion, where allowed by law, or by reliction, and excepting tax adjudicated lands, belonging to the State of Louisiana and not presently under mineral lease on September 11, 2002, situated in Plaquemines Parish, Louisiana, and more particularly described as follows: Beginning at the Southwest corner of Block 22, Main Pass Area, Revised, having Coordinates of X = 2,605,850.00 and Y = 322,330.00; thence North 3,817.44 feet along the West line of said Block 22 to a point, also being the Southwest corner of State Lease No. 16688 having Coordinates of X = 2,605,850.00 and Y = 326,147.44; thence South 72 degrees 18 minutes 25 seconds East 1,653.20 feet along the South line of said State Lease No. 16688 to its Southeast corner, also being a point on the West line of State Lease No. 16430 having Coordinates of X = 2,607,425.00 and Y = 325,645.00; thence South 3,315.00 feet along the West line of said State Lease No. 16430 to its Southwest corner, also being a point on the South line of said Block 22 having Coordinates of X = 2,607,425.00 and Y = 322,330.00; thence West 1,575.00 feet along the South line of said Block 22 to the point of beginning, containing approximately **128.94 acres**, all as more particularly outlined on a plat on file in the Office of Mineral Resources, Department of Natural Resources, as provided by the applicant. All bearings, distances and coordinates are based on Louisiana Coordinate System of 1927, (North or South Zone), where applicable.

NOTE: The above description of the Tract nominated for lease has been provided and corrected, where required, exclusively by the nomination party. Any mineral lease selected from this Tract and awarded by the Louisiana State Mineral Board shall be without warranty of any kind, either express, implied, or statutory, including, but not limited to, the implied warranties of merchantability and fitness for a particular purpose. Should the mineral lease awarded by the Louisiana State Mineral Board be subsequently modified, cancelled or abrogated due to the existence of conflicting leases, operating agreements, private claims or other future obligations or conditions which may affect all or any portion of the leased Tract, it shall not relieve the Lessee of the obligation to pay any bonus due thereon to the Louisiana State Mineral Board, nor shall the Louisiana State Mineral Board be obligated to refund any consideration paid by the Lessor prior to such modification, cancellation, or abrogation, including, but not limited to, bonuses, rentals and royalties.

NOTE: The State of Louisiana does hereby reserve, and this lease shall be subject to, the imprescriptible right of surface use in the nature of a servitude in favor of the Department of Natural Resources, including its Offices and Commissions, for the sole purpose of implementing, constructing, servicing and maintaining approved coastal zone management and/or restoration projects. Utilization of any and all rights derived under this lease by the mineral lessee, its agents, successors or assigns, shall not interfere with nor hinder the reasonable surface use by the

Department of Natural Resources, its Offices or Commissions, as herein above reserved.

Applicant: Cash River Exploration, Inc.

Bidder	Cash Payment	Price / Acre	Rental	Oil	Gas	Other

GULF OF MEXICO

MAIN PASS AREA, REVISED

BIK. 23

BIK. 22

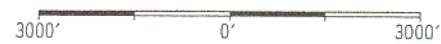
BIK. 24

BIK. 25

TR 34890
128.94 ± ACS.
SEPT., 2002

P. O. B.
X=2,605,850.00
Y= 322,330.00

Plaquemines Parish, Louisiana



NAD 27 LAMBERT LA. SOUTH ZONE

SL 16687

SL 16685

SL 16689

SL 16686

SL 16688

SL 16430

SL 16431

SL 16591

SL 16818

SL 16592

SL 16406

SL 17049

SL 17048

SL 17246

SL 16432

SL 16690

SL 16692

SL 16819

SL 2410

TRACT 34891 - Portion of Block 22, Main Pass Area, Revised, Plaquemines Parish, Louisiana

All of the lands now or formerly constituting the beds and bottoms of all water bodies of every nature and description, and all islands and other lands formed by accretion, where allowed by law, or by reliction, and excepting tax adjudicated lands, belonging to the State of Louisiana and not presently under mineral lease on September 11, 2002, situated in Plaquemines Parish, Louisiana, and more particularly described as follows: Beginning at the Southeast corner of Block 22, Main Pass Area, Revised, having Coordinates of X = 2,620,600.00 and Y = 322,330.00; thence West 4,875.00 feet along the South line of said Block 22 to a point, also the most Southerly Southeast corner of State Lease No. 16431 having Coordinates of X = 2,615,725.00 and Y = 322,330.00; thence North 50 degrees 24 minutes 43 seconds East 3,373.80 feet along said State Lease No. 16431 to a corner, also being the Southwest corner of State Lease No. 16931 having Coordinates of X = 2,618,325.00 and Y = 324,480.00; thence South 78 degrees 44 minutes 15 seconds East 2,319.67 feet along the South line of said State Lease No. 16931 to its Southeast corner, also being a point on the East line of said Block 22 having Coordinates of X = 2,620,600.00 and Y = 324,026.96; thence South 1,696.96 feet along the East line of said Block 22 to the point of beginning, containing approximately **164.62 acres**, all as more particularly outlined on a plat on file in the Office of Mineral Resources, Department of Natural Resources, as provided by the applicant. All bearings, distances and coordinates are based on Louisiana Coordinate System of 1927, (North or South Zone), where applicable.

NOTE: The above description of the Tract nominated for lease has been provided and corrected, where required, exclusively by the nomination party. Any mineral lease selected from this Tract and awarded by the Louisiana State Mineral Board shall be without warranty of any kind, either express, implied, or statutory, including, but not limited to, the implied warranties of merchantability and fitness for a particular purpose. Should the mineral lease awarded by the Louisiana State Mineral Board be subsequently modified, cancelled or abrogated due to the existence of conflicting leases, operating agreements, private claims or other future obligations or conditions which may affect all or any portion of the leased Tract, it shall not relieve the Lessee of the obligation to pay any bonus due thereon to the Louisiana State Mineral Board, nor shall the Louisiana State Mineral Board be obligated to refund any consideration paid by the Lessor prior to such modification, cancellation, or abrogation, including, but not limited to, bonuses, rentals and royalties.

NOTE: The State of Louisiana does hereby reserve, and this lease shall be subject to, the imprescriptible right of surface use in the nature of a servitude in favor of the Department of Natural Resources, including its Offices and Commissions, for the sole purpose of implementing, constructing, servicing and maintaining approved coastal zone management and/or restoration projects. Utilization of any and all rights derived under this lease by the mineral lessee, its agents, successors or assigns,

shall not interfere with nor hinder the reasonable surface use by the Department of Natural Resources, its Offices or Commissions, as herein above reserved.

Applicant: Cash River Exploration, Inc.

Bidder	Cash Payment	Price / Acre	Rental	Oil	Gas	Other

SL 16689

266

MAIN PASS AREA, REVISED

Bik. 22

SL 16430

SL 17247

SL 15536

Bik. 21

SL 16431

SL 16931

SL 16932

SL 16933

TR 34891
164.62 ± ACS.
SEPT., 2002

P. O. B.
X=2,620,600.00
Y=322,330.00

Bik. 26

SL 15985
As Amended

SL 15985

SL 15827

SL 15127
As Amended

SL 16432

Bik. 25

SL 17246

SL 16690

SL 16692

SL 16819

GULF OF MEXICO

Plaquemines Parish, Louisiana

3000' 0' 3000'

NAD 27
LAMBERT LA. SOUTH ZONE

TRACT 34892 - Portion of Block 21, Main Pass Area, Revised, Plaquemines Parish, Louisiana

All of the lands now or formerly constituting the beds and bottoms of all water bodies of every nature and description, and all islands and other lands formed by accretion, where allowed by law, or by reliction, and excepting tax adjudicated lands, belonging to the State of Louisiana and not presently under mineral lease on September 11, 2002, situated in Plaquemines Parish, Louisiana, and more particularly described as follows: Beginning at the Southwest corner of Block 21, Main Pass Area, Revised, having Coordinates of X = 2,620,600.00 and Y = 322,330.00; thence North 1,696.96 feet along the West line of said Block 21 to a point, also being the most Westerly Southwest corner of State Lease No. 16932 having Coordinates of X = 2,620,600.00 and Y = 324,026.96; thence along the boundary of said State Lease No. 16932 the following courses: South 78 degrees 44 minutes 15 seconds East 2,416.54 feet and South 10 degrees 38 minutes 02 seconds East 1,246.40 feet to the most Southerly Southwest corner of said State Lease No. 16932 having Coordinates of X = 2,623,200.00 and Y = 322,330.00; thence West 2,600.00 feet along the South line of said Block 21 to the point of beginning, containing approximately **82.72 acres**, all as more particularly outlined on a plat on file in the Office of Mineral Resources, Department of Natural Resources, as provided by the applicant. All bearings, distances and coordinates are based on Louisiana Coordinate System of 1927, (North or South Zone), where applicable.

NOTE: The above description of the Tract nominated for lease has been provided and corrected, where required, exclusively by the nomination party. Any mineral lease selected from this Tract and awarded by the Louisiana State Mineral Board shall be without warranty of any kind, either express, implied, or statutory, including, but not limited to, the implied warranties of merchantability and fitness for a particular purpose. Should the mineral lease awarded by the Louisiana State Mineral Board be subsequently modified, cancelled or abrogated due to the existence of conflicting leases, operating agreements, private claims or other future obligations or conditions which may affect all or any portion of the leased Tract, it shall not relieve the Lessee of the obligation to pay any bonus due thereon to the Louisiana State Mineral Board, nor shall the Louisiana State Mineral Board be obligated to refund any consideration paid by the Lessor prior to such modification, cancellation, or abrogation, including, but not limited to, bonuses, rentals and royalties.

NOTE: The State of Louisiana does hereby reserve, and this lease shall be subject to, the imprescriptible right of surface use in the nature of a servitude in favor of the Department of Natural Resources, including its Offices and Commissions, for the sole purpose of implementing, constructing, servicing and maintaining approved coastal zone management and/or restoration projects. Utilization of any and all rights derived under this lease by the mineral lessee, its agents, successors or assigns, shall not interfere with nor hinder the reasonable surface use by the

Department of Natural Resources, its Offices or Commissions, as herein above reserved.

Applicant: Cash River Exploration, Inc.

Bidder	Cash Payment	Price / Acre	Rental	Oil	Gas	Other

SL 16689

MAIN PASS AREA, REVISED

Bik. 22

SL 16430

SL 16431

SL 16931

SL 16932

SL 17247

Bik. 21

SL 15536

SL 4708
As Amended

TR 34892
82.72 ± ACS.
SEPT., 2002

P. O. B.
X=2,620,600.00
Y= 322,330.00

SL 16933

SL 16935

Bik. 26

SL 16432

GULF OF MEXICO

SL 16690

SL 16692

Bik. 25

SL 15985
As Amended

SL 15985

SL 15827

SL 15127
As Amended

SL 16936

NAD 27 LAMBERT LA. SOUTH ZONE

Plaquemines Parish, Louisiana

3000' 0' 3000'

TRACT 34893 - Portion of Block 21, Main Pass Area, Revised, Plaquemines Parish, Louisiana

All of the lands now or formerly constituting the beds and bottoms of all water bodies of every nature and description, and all islands and other lands formed by accretion, where allowed by law, or by reliction, and excepting tax adjudicated lands, belonging to the State of Louisiana and not presently under mineral lease on September 11, 2002, situated in Plaquemines Parish, Louisiana, and more particularly described as follows: Beginning at the Southeast corner of Block 21, Main Pass Area, Revised, having Coordinates of X = 2,635,350.00 and Y = 322,330.00; thence West 10,379.86 feet along the South line of said Block 21 to a point, also being the Southeast corner of State Lease No. 16932 having Coordinates of X = 2,624,970.14 and Y = 322,330.00; thence North 07 degrees 25 minutes 57 seconds West 2,799.52 feet along the East line of said State Lease No. 16932 to its Northeast corner, also being the most Southerly Southwest corner of State Lease No. 17247 having Coordinates of X = 2,624,608.00 and Y = 325,106.00; thence North 71 degrees 58 minutes 17 seconds East 3,540.85 feet along the South line of said State Lease No. 17247 to its Southeast corner having Coordinates of X = 2,627,975.00 and Y = 326,201.86; thence North 928.14 feet to a point on the East line of said State Lease No. 17247, also being the Southwest corner of State Lease No. 15536 having Coordinates of X = 2,627,975.00 and Y = 327,130.00; thence East 7,375.00 feet along the South line of said State Lease No. 15536 to its Southeast corner, also being a point on the East line of said Block 21 having Coordinates of X = 2,635,350.00 and Y = 327,130.00; thence South 4,800.00 feet along the East line of said Block 21 to the point of beginning, containing approximately **1,058.06 acres**, all as more particularly outlined on a plat on file in the Office of Mineral Resources, Department of Natural Resources, as provided by the applicant. All bearings, distances and coordinates are based on Louisiana Coordinate System of 1927, (North or South Zone), where applicable.

NOTE: The above description of the Tract nominated for lease has been provided and corrected, where required, exclusively by the nomination party. Any mineral lease selected from this Tract and awarded by the Louisiana State Mineral Board shall be without warranty of any kind, either express, implied, or statutory, including, but not limited to, the implied warranties of merchantability and fitness for a particular purpose. Should the mineral lease awarded by the Louisiana State Mineral Board be subsequently modified, cancelled or abrogated due to the existence of conflicting leases, operating agreements, private claims or other future obligations or conditions which may affect all or any portion of the leased Tract, it shall not relieve the Lessee of the obligation to pay any bonus due thereon to the Louisiana State Mineral Board, nor shall the Louisiana State Mineral Board be obligated to refund any consideration paid by the Lessor prior to such modification, cancellation, or abrogation, including, but not limited to, bonuses, rentals and royalties.

NOTE: The State of Louisiana does hereby reserve, and this lease shall be subject to, the imprescriptible right of surface use in the nature of a

servitude in favor of the Department of Natural Resources, including its Offices and Commissions, for the sole purpose of implementing, constructing, servicing and maintaining approved coastal zone management and/or restoration projects. Utilization of any and all rights derived under this lease by the mineral lessee, its agents, successors or assigns, shall not interfere with nor hinder the reasonable surface use by the Department of Natural Resources, its Offices or Commissions, as herein above reserved.

Applicant: Cash River Exploration, Inc.

Bidder	Cash Payment	Price / Acre	Rental	Oil	Gas	Other

BIK. 22

BIK. 25

BIK. 21

BIK. 32

BIK. 33

BIK. 26

GULF OF MEXICO

TR 34893
1,058.06 ± ACS.
SEPT., 2002

SL 17301 272

SL 4708
As Amended

SL 1227
As Amended

SL 17247

SL 15536

SL 16931

SL 16932

SL 16933

SL 16935

P. O. B.
X=2, 635, 350.00
Y= 322, 330.00

SL 17385

SL 17384

SL 15985
As Amended

SL 15985

SL 15827

SL 15127
As Amended

MAIN PASS AREA, REVISED
BRETON SOUND AREA

Plaquemines Parish, Louisiana

3000' 0' 3000'

TRACT 34894 - Portion of Block 32, Breton Sound Area, Plaquemines Parish, Louisiana

All of the lands now or formerly constituting the beds and bottoms of all water bodies of every nature and description, and all islands and other lands formed by accretion, where allowed by law, or by reliction, and excepting tax adjudicated lands, belonging to the State of Louisiana and not presently under mineral lease on September 11, 2002, situated in Plaquemines Parish, Louisiana, and more particularly described as follows: Beginning at the Southeast corner of Block 32, Breton Sound Area, having Coordinates of X = 2,650,100.00 and Y = 322,330.00; thence West 14,750.00 feet along the South line of said Block 32 to its Southwest corner having Coordinates of X = 2,635,350.00 and Y = 322,330.00; thence North 3,687.50 feet along the West line of said Block 32 to a point, also being the Southwest corner of State Lease No. 1227, as amended having Coordinates of X = 2,635,350.00 and Y = 326,017.50; thence East 11,250.00 feet along the South line of said State Lease No. 1227 to its Southeast corner having Coordinates of X = 2,646,600.00 and Y = 326,017.50; thence North 11,062.50 feet along the East line of said State Lease No. 1227 to its Northeast corner, also being a point on the North line of said Block 32 having Coordinates of X = 2,646,600.00 and Y = 337,080.00; thence East 3,500.00 feet along the North line of said Block 32 to its Northeast corner having Coordinates of X = 2,650,100.00 and Y = 337,080.00; thence South 14,750.00 feet along the East line of said Block 32 to the point of beginning, containing approximately **2,137.50 acres**, all as more particularly outlined on a plat on file in the Office of Mineral Resources, Department of Natural Resources, as provided by the applicant. All bearings, distances and coordinates are based on Louisiana Coordinate System of 1927, (North or South Zone), where applicable.

NOTE: The above description of the Tract nominated for lease has been provided and corrected, where required, exclusively by the nomination party. Any mineral lease selected from this Tract and awarded by the Louisiana State Mineral Board shall be without warranty of any kind, either express, implied, or statutory, including, but not limited to, the implied warranties of merchantability and fitness for a particular purpose. Should the mineral lease awarded by the Louisiana State Mineral Board be subsequently modified, cancelled or abrogated due to the existence of conflicting leases, operating agreements, private claims or other future obligations or conditions which may affect all or any portion of the leased Tract, it shall not relieve the Lessee of the obligation to pay any bonus due thereon to the Louisiana State Mineral Board, nor shall the Louisiana State Mineral Board be obligated to refund any consideration paid by the Lessor prior to such modification, cancellation, or abrogation, including, but not limited to, bonuses, rentals and royalties.

NOTE: The State of Louisiana does hereby reserve, and this lease shall be subject to, the imprescriptible right of surface use in the nature of a servitude in favor of the Department of Natural Resources, including its Offices and Commissions, for the sole purpose of implementing, constructing, servicing and maintaining approved coastal zone management

and/or restoration projects. Utilization of any and all rights derived under this lease by the mineral lessee, its agents, successors or assigns, shall not interfere with nor hinder the reasonable surface use by the Department of Natural Resources, its Offices or Commissions, as herein above reserved.

Applicant: Cash River Exploration, Inc.

Bidder	Cash Payment	Price / Acre	Rental	Oil	Gas	Other

Blk. 16

Blk. 17

SL 16895

275

Blk. 18

SL 16544

SL 17301

Blk. 32

SL 1227, As Amended

GULF OF MEXICO

Blk. 31

TR 34894
2,137.50 ± ACS.
SEPT., 2002

SL 4407

P. O. B.
X=2,650,100.00
Y= 322,330.00

SL 4458

Blk. 34

Blk. 33

SL 16298

SL 14217

SL 17385

SL 17384

SL 16935

LAMBERT L.A. SOUTH ZONE

NAD 27

Plaquemines Parish, Louisiana

3000' 0' 3000'

TRACT 34895 - Portion of Block 24, Main Pass Area, Revised, Plaquemines Parish, Louisiana

All of the lands now or formerly constituting the beds and bottoms of all water bodies of every nature and description, and all islands and other lands formed by accretion, where allowed by law, or by reliction, and excepting tax adjudicated lands, belonging to the State of Louisiana and not presently under mineral lease on September 11, 2002, situated in Plaquemines Parish, Louisiana, and more particularly described as follows: Beginning at the Northeast corner of Block 24, Main Pass Area, Revised, having Coordinates of X = 2,605,850.00 and Y = 322,330.00; thence South 3,862.93 feet along the East line of said Block 24 to a point, also being the Northeast corner of State Lease No. 17049 having Coordinates of X = 2,605,850.00 and Y = 318,467.07; thence West 4,500.00 feet along the North line of said State Lease No. 17049 to its Northwest corner, also being a point on the East line of State Lease No. 16406 having Coordinates of X = 2,601,350.00 and Y = 318,467.07; thence North 3,862.93 feet along the East line of said State Lease No. 16406 to its Northeast corner, also being a point on the North line of said Block 24 having Coordinates of X = 2,601,350.00 and Y = 322,330.00; thence East 4,500.00 feet along the North line of said Block 24 to the point of beginning, containing approximately **399.06 acres**, all as more particularly outlined on a plat on file in the Office of Mineral Resources, Department of Natural Resources, as provided by the applicant. All bearings, distances and coordinates are based on Louisiana Coordinate System of 1927, (North or South Zone), where applicable.

NOTE: The above description of the Tract nominated for lease has been provided and corrected, where required, exclusively by the nomination party. Any mineral lease selected from this Tract and awarded by the Louisiana State Mineral Board shall be without warranty of any kind, either express, implied, or statutory, including, but not limited to, the implied warranties of merchantability and fitness for a particular purpose. Should the mineral lease awarded by the Louisiana State Mineral Board be subsequently modified, cancelled or abrogated due to the existence of conflicting leases, operating agreements, private claims or other future obligations or conditions which may affect all or any portion of the leased Tract, it shall not relieve the Lessee of the obligation to pay any bonus due thereon to the Louisiana State Mineral Board, nor shall the Louisiana State Mineral Board be obligated to refund any consideration paid by the Lessor prior to such modification, cancellation, or abrogation, including, but not limited to, bonuses, rentals and royalties.

NOTE: The State of Louisiana does hereby reserve, and this lease shall be subject to, the imprescriptible right of surface use in the nature of a servitude in favor of the Department of Natural Resources, including its Offices and Commissions, for the sole purpose of implementing, constructing, servicing and maintaining approved coastal zone management and/or restoration projects. Utilization of any and all rights derived under this lease by the mineral lessee, its agents, successors or assigns, shall not interfere with nor hinder the reasonable surface use by the

Department of Natural Resources, its Offices or Commissions, as herein above reserved.

Applicant: Cash River Exploration, Inc.

Bidder	Cash Payment	Price / Acre	Rental	Oil	Gas	Other

MAIN PASS AREA, REVISED

278

SL 16686

SL 16688

SL 16430

Bik. 22

SL 16431

SL 16591

Bik. 23

SL 16818

TR 34895
399.06 ± ACS.
SEPT., 2002

P. O. B.
X=2,605,850.00
Y= 322,330.00

SL 16592

SL 16406

SL 17049

SL 17048

SL 17246

SL 16432

Bik. 25

SL 16690

SL 16819

SL 16692

SL 2410

Bik. 24

SL 17047

SL 16691

GULF OF MEXICO

Plaquemines Parish, Louisiana

3000' 0' 3000'

NAD 27 LAMBERT LA. SOUTH ZONE

TRACT 34896 - Portion of Block 24, Main Pass Area, Revised, Plaquemines Parish, Louisiana

All of the lands now or formerly constituting the beds and bottoms of all water bodies of every nature and description, and all islands and other lands formed by accretion, where allowed by law, or by reliction, and excepting tax adjudicated lands, belonging to the State of Louisiana and not presently under mineral lease on September 11, 2002, situated in Plaquemines Parish, Louisiana, and more particularly described as follows: Beginning at the Southeast corner of Block 24, Main Pass Area, Revised, also being the Southeast corner of State Lease No. 16691 having Coordinates of X = 2,605,850.00 and Y = 307,580.00; thence North 29 degrees 24 minutes 26 seconds West 5,050.78 feet along the East line of said State Lease No. 16691 to its Northeast corner, also being the most Southerly Southeast corner of State Lease No. 17048 having Coordinates of X = 2,603,370.00 and Y = 311,980.00; thence along the boundary of said State Lease No. 17048 the following courses: North 2,970.36 feet and East 2,480.00 feet to the most Northerly Southeast corner of said State Lease No. 17048, also being a point on the East line of said Block 24 having Coordinates of X = 2,605,850.00 and Y = 314,950.36; thence South 7,370.36 feet along the East line of said Block 24 to the point of beginning, containing approximately **294.36 acres**, all as more particularly outlined on a plat on file in the Office of Mineral Resources, Department of Natural Resources, as provided by the applicant. All bearings, distances and coordinates are based on Louisiana Coordinate System of 1927, (North or South Zone), where applicable.

NOTE: The above description of the Tract nominated for lease has been provided and corrected, where required, exclusively by the nomination party. Any mineral lease selected from this Tract and awarded by the Louisiana State Mineral Board shall be without warranty of any kind, either express, implied, or statutory, including, but not limited to, the implied warranties of merchantability and fitness for a particular purpose. Should the mineral lease awarded by the Louisiana State Mineral Board be subsequently modified, cancelled or abrogated due to the existence of conflicting leases, operating agreements, private claims or other future obligations or conditions which may affect all or any portion of the leased Tract, it shall not relieve the Lessee of the obligation to pay any bonus due thereon to the Louisiana State Mineral Board, nor shall the Louisiana State Mineral Board be obligated to refund any consideration paid by the Lessor prior to such modification, cancellation, or abrogation, including, but not limited to, bonuses, rentals and royalties.

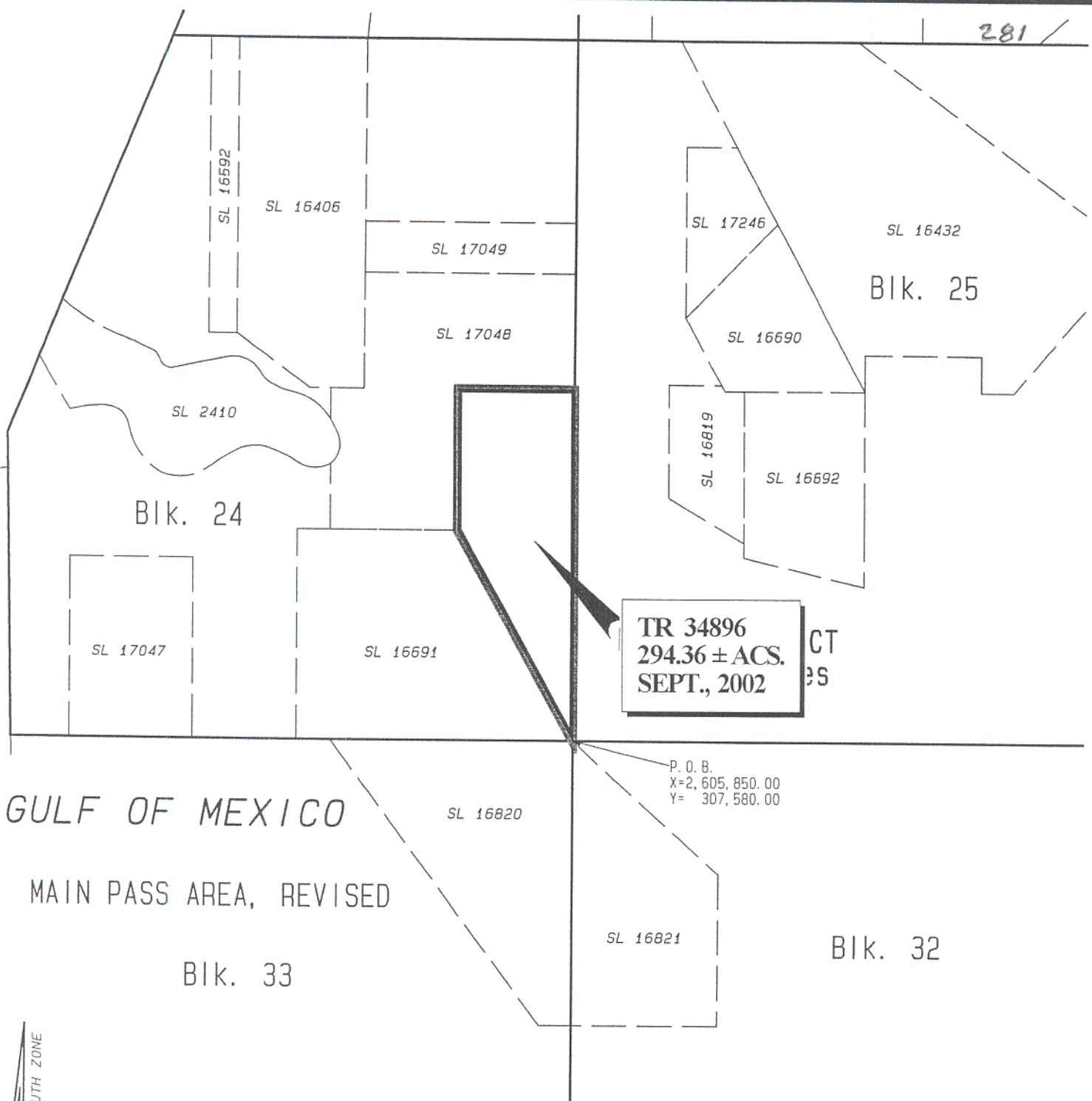
NOTE: The State of Louisiana does hereby reserve, and this lease shall be subject to, the imprescriptible right of surface use in the nature of a servitude in favor of the Department of Natural Resources, including its Offices and Commissions, for the sole purpose of implementing, constructing, servicing and maintaining approved coastal zone management and/or restoration projects. Utilization of any and all rights derived under this lease by the mineral lessee, its agents, successors or assigns, shall not interfere with nor hinder the reasonable surface use by the

Department of Natural Resources, its Offices or Commissions, as herein above reserved.

Applicant: Cash River Exploration, Inc.

Bidder	Cash Payment	Price / Acre	Rental	Oil	Gas	Other

281



TR 34896
294.36 ± ACS.
SEPT., 2002

P. O. B.
X=2,605,850.00
Y=307,580.00

GULF OF MEXICO

MAIN PASS AREA, REVISED

Bik. 33

Bik. 32

NAD 27
LAMBERT LA. SOUTH ZONE

Plaquemines Parish, Louisiana

3000' 0' 3000'

TRACT 34897 - Portion of Block 25, Main Pass Area, Revised, Plaquemines Parish, Louisiana

All of the lands now or formerly constituting the beds and bottoms of all water bodies of every nature and description, and all islands and other lands formed by accretion, where allowed by law, or by reliction, and excepting tax adjudicated lands, belonging to the State of Louisiana and not presently under mineral lease on September 11, 2002, situated in Plaquemines Parish, Louisiana, and more particularly described as follows: Beginning at a point having Coordinates of X = 2,605,850.00 and Y = 307,580.00, said point also being the Southwest corner of Block 25, Main Pass Area, Revised; thence North 14,750.00 feet on and along the West line of said Block 25, Main Pass Area, Revised, to a point having Coordinates of X = 2,605,850.00 and Y = 322,330.00; said point also being the Northwest corner of said Block 25, Main Pass Area, Revised; thence East 2,200.00 feet on and along the North line of said Block 25, Main Pass Area, Revised, to a point having Coordinates of X = 2,608,050.00 and Y = 322,330.00, said point also being on a Western boundary of State of Louisiana - State Lease No. 16432; thence on and along the Western and Southern boundaries of said State of Louisiana - State Lease No. 16432, on and along the Northern and Western boundaries of State of Louisiana - State Lease No. 17246, on and along the Western and Southern boundaries of State of Louisiana - State Lease No. 16690, on and along the Northern, Western and Southern boundaries of State of Louisiana - State Lease No. 16819, as amended, and on and along the Western, Southern and Eastern boundaries of State of Louisiana - State Lease No. 16692, as amended, the following courses and distances, to-wit: South 28 degrees 28 minutes 27 seconds East 2,528.92 feet to a point having Coordinates of X = 2,609,255.70 and Y = 320,107.00; West 1,064.80 feet to a point having Coordinates of X = 2,608,190.90 and Y = 320,107.00; South 3,604.90 feet to a point having Coordinates of X = 2,608,190.90 and Y = 316,502.10; South 28 degrees 28 minutes 27 seconds East 1,610.00 feet to a point having Coordinates of X = 2,608,958.49 and Y = 315,086.85; West 750.00 feet to a point having Coordinates of X = 2,608,208.49 and Y = 315,086.85; South 2,604.93 feet to a point having Coordinates of X = 2,608,208.49 and Y = 312,481.92; South 59 degrees 39 minutes 01 seconds East 1,438.67 feet to a point having Coordinates of X = 2,609,450.00 and Y = 311,755.00; South 300.00 feet to a point having Coordinates of X = 2,609,450.00 and Y = 311,455.00; South 77 degrees 00 minutes 19 seconds East 1,621.53 feet to a point having Coordinates of X = 2,611,030.00 and Y = 311,090.38; North 3,864.62 feet to a point having Coordinates of X = 2,611,030.00 and Y = 314,955.00; East 1,020.00 feet to a point having Coordinates of X = 2,612,050.00 and Y = 314,955.00; North 775.00 feet to a point having Coordinates of X = 2,612,050.00 and Y = 315,730.00; East 2,500.00 feet to a point having Coordinates of X = 2,614,550.00 and Y = 315,730.00; and South 775.00 feet to a point having Coordinates of X = 2,614,550.00 and Y = 314,955.00; thence South 7,375.00 feet to a point having Coordinates of X = 2,614,550.00 and Y = 307,580.00, said point also being on the South line of said Block 25, Main Pass Area, Revised; thence West 8,700.00 feet on and along said South line of said Block 25, Main Pass Area, Revised, to the point of beginning, containing approximately **1,735.47 acres**, all as

more particularly outlined on a plat on file in the Office of Mineral Resources, Department of Natural Resources, as provided by the applicant. All bearings, distances and coordinates are based on Louisiana Coordinate System of 1927, (North or South Zone), where applicable.

NOTE: The above description of the Tract nominated for lease has been provided and corrected, where required, exclusively by the nomination party. Any mineral lease selected from this Tract and awarded by the Louisiana State Mineral Board shall be without warranty of any kind, either express, implied, or statutory, including, but not limited to, the implied warranties of merchantability and fitness for a particular purpose. Should the mineral lease awarded by the Louisiana State Mineral Board be subsequently modified, cancelled or abrogated due to the existence of conflicting leases, operating agreements, private claims or other future obligations or conditions which may affect all or any portion of the leased Tract, it shall not relieve the Lessee of the obligation to pay any bonus due thereon to the Louisiana State Mineral Board, nor shall the Louisiana State Mineral Board be obligated to refund any consideration paid by the Lessor prior to such modification, cancellation, or abrogation, including, but not limited to, bonuses, rentals and royalties.

NOTE: The State of Louisiana does hereby reserve, and this lease shall be subject to, the imprescriptible right of surface use in the nature of a servitude in favor of the Department of Natural Resources, including its Offices and Commissions, for the sole purpose of implementing, constructing, servicing and maintaining approved coastal zone management and/or restoration projects. Utilization of any and all rights derived under this lease by the mineral lessee, its agents, successors or assigns, shall not interfere with nor hinder the reasonable surface use by the Department of Natural Resources, its Offices or Commissions, as herein above reserved.

Applicant: Robert A. Schroeder, Inc.

Bidder	Cash Payment	Price / Acre	Rental	Oil	Gas	Other

TRACT 34898 - Portion of Block 25, Main Pass Area, Revised, Plaquemines Parish, Louisiana

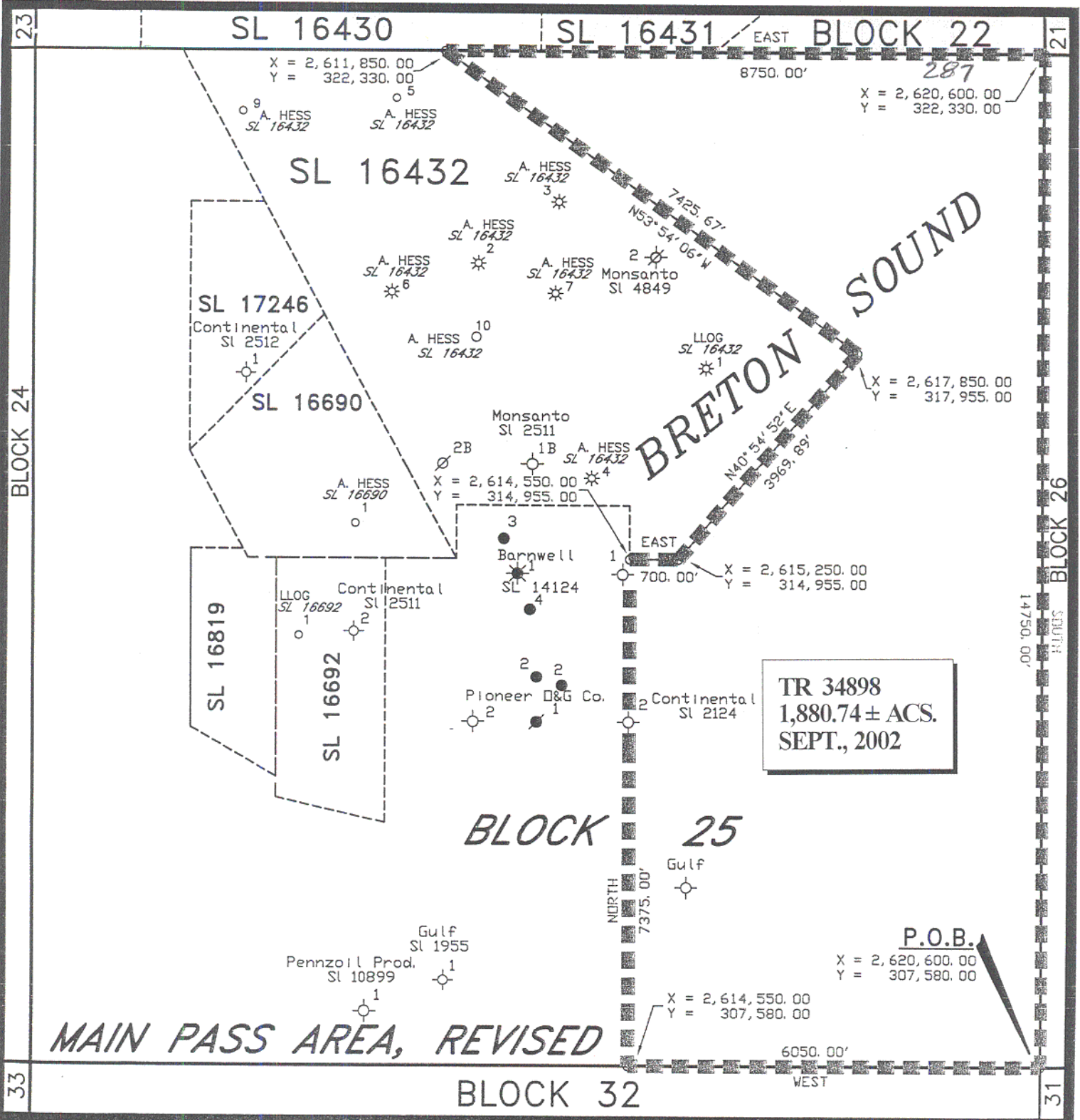
All of the lands now or formerly constituting the beds and bottoms of all water bodies of every nature and description, and all islands and other lands formed by accretion, where allowed by law, or by reliction, and excepting tax adjudicated lands, belonging to the State of Louisiana and not presently under mineral lease on September 11, 2002, situated in Plaquemines Parish, Louisiana, and more particularly described as follows: Beginning at the Southeast corner of Block 25, Main Pass Area, Revised, Plaquemines Parish, Louisiana, having Coordinates of X = 2,620,600.00 and Y = 307,580.00; thence West 6,050.00 feet on and along the South line of said Block 25, Main Pass Area, Revised, to a point having Coordinates of X = 2,614,550.00 and Y = 307,580.00; thence North 7,375.00 feet to a point having Coordinates of X = 2,614,550.00 and Y = 314,955.00, said point also being on the Southern boundary of State of Louisiana - State Lease No. 16432; thence on and along the Southern and Eastern boundaries of said State of Louisiana - State Lease No. 16432 the following courses and distances, to-wit: East 700.00 feet to a point having Coordinates of X = 2,615,250.00 and Y = 314,955.00; North 40 degrees 54 minutes 52 seconds East 3,969.89 feet to a point having Coordinates of X = 2,617,850.00 and Y = 317,955.00; and North 53 degrees 54 minutes 06 seconds West 7,425.67 feet to a point having Coordinates of X = 2,611,850.00 and Y = 322,330.00, said point also being on the North line of said Block 25, Main Pass Area, Revised; thence East 8,750.00 feet on and along said North line of said Block 25, Main Pass Area, Revised, to a point having Coordinates of X = 2,620,600.00 and Y = 322,330.00, said point also being the Northeast corner of said Block 25, Main Pass Area, Revised; thence South 14,750.00 feet on and along the East line of said Block 25, Main Pass Area, Revised, to the point of beginning, containing approximately **1,880.74 acres**, all as more particularly outlined on a plat on file in the Office of Mineral Resources, Department of Natural Resources, as provided by the applicant. All bearings, distances and coordinates are based on Louisiana Coordinate System of 1927, (North or South Zone), where applicable.

NOTE: The above description of the Tract nominated for lease has been provided and corrected, where required, exclusively by the nomination party. Any mineral lease selected from this Tract and awarded by the Louisiana State Mineral Board shall be without warranty of any kind, either express, implied, or statutory, including, but not limited to, the implied warranties of merchantability and fitness for a particular purpose. Should the mineral lease awarded by the Louisiana State Mineral Board be subsequently modified, cancelled or abrogated due to the existence of conflicting leases, operating agreements, private claims or other future obligations or conditions which may affect all or any portion of the leased Tract, it shall not relieve the Lessee of the obligation to pay any bonus due thereon to the Louisiana State Mineral Board, nor shall the Louisiana State Mineral Board be obligated to refund any consideration paid by the Lessor prior to such modification, cancellation, or abrogation, including, but not limited to, bonuses, rentals and royalties.

NOTE: The State of Louisiana does hereby reserve, and this lease shall be subject to, the imprescriptible right of surface use in the nature of a servitude in favor of the Department of Natural Resources, including its Offices and Commissions, for the sole purpose of implementing, constructing, servicing and maintaining approved coastal zone management and/or restoration projects. Utilization of any and all rights derived under this lease by the mineral lessee, its agents, successors or assigns, shall not interfere with nor hinder the reasonable surface use by the Department of Natural Resources, its Offices or Commissions, as herein above reserved.

Applicant: Robert A. Schroeder, Inc.

Bidder	Cash Payment	Price / Acre	Rental	Oil	Gas	Other



BLOCK 25
MAIN PASS AREA, REVISED
PLAQUEMINES PARISH, LOUISIANA
SCALE 1" = 2000'

ALL COORDINATES, BEARINGS AND DISTANCES ARE GRID, AND ARE ON THE LOUISIANA LAMBERT PLANE COORDINATE SYSTEM, SOUTH ZONE, 1927 NORTH AMERICAN DATUM.



TRACT 34899 - Portion of Block 26, Main Pass Area, Revised, Plaquemines Parish, Louisiana

All of the lands now or formerly constituting the beds and bottoms of all water bodies of every nature and description, and all islands and other lands formed by accretion, where allowed by law, or by reliction, and excepting tax adjudicated lands, belonging to the State of Louisiana and not presently under mineral lease on September 11, 2002, situated in Plaquemines Parish, Louisiana, and more particularly described as follows: Beginning at a point having Coordinates of X = 2,620,600.00 and Y = 307,580.00, said point also being the Southwest corner of Block 26, Main Pass Area, Revised; thence North 14,750.00 feet on and along the West line of said Block 26, Main Pass Area, Revised, to a point having Coordinates of X = 2,620,600.00 and Y = 322,330.00, said point also being the Northwest corner of said Block 26, Main Pass Area, Revised; thence East 2,580.00 feet on and along the North line of said Block 26, Main Pass Area, Revised, to a point having Coordinates of X = 2,623,180.00 and Y = 322,330.00, said point also being on the Western boundary of State of Louisiana - State Lease No. 16933; thence on and along the Western, Southern and Eastern boundaries of said State of Louisiana - State Lease No. 16933 the following courses and distances, to-wit: South 11 degrees 17 minutes 29 seconds East 3,028.62 feet to a point having Coordinates of X = 2,623,773.00 and Y = 319,360.00; North 80 degrees 13 minutes 29 seconds East 1,572.58 feet to a point having Coordinates of X = 2,625,322.75 and Y = 319,627.00; and North 07 degrees 25 minutes 57 seconds West 2,725.90 feet to a point having Coordinates of X = 2,624,970.14 and Y = 322,330.00, said point also being on said North line of said Block 26, Main Pass Area, Revised; thence East 3,004.86 feet on and along said North line of said Block 26, Main Pass Area, Revised, to a point having Coordinates of X = 2,627,975.00 and Y = 322,330.00; thence South 4,806.22 feet to a point having Coordinates of X = 2,627,975.00 and Y = 317,523.78, said point also being on the Northern boundary of State of Louisiana - State Lease No. 15985, as amended; thence on and along the Northern and Western boundaries of said State of Louisiana - State Lease No. 15985, as amended, on and along the Western boundary of State of Louisiana - State Lease No. 15827, and on and along the Western, Southern and Eastern boundaries of State of Louisiana - State Lease No. 15127, as amended, the following courses and distances, to-wit: West 1,872.00 feet to a point having Coordinates of X = 2,626,103.00 and Y = 317,523.78; South 1,686.05 feet to a point having Coordinates of X = 2,626,103.00 and Y = 315,837.73; West 1,888.00 feet to a point having Coordinates of X = 2,624,215.00 and Y = 315,837.73; South 2,682.78 feet to a point having Coordinates of X = 2,624,215.00 and Y = 313,154.95; East 1,700.00 feet to a point having Coordinates of X = 2,625,915.00 and Y = 313,154.95; and North 57 degrees 13 minutes 03 seconds East 2,450.25 feet to a point having Coordinates of X = 2,627,975.00 and Y = 314,481.64; thence South 3,178.17 feet to a point having Coordinates of X = 2,627,975.00 and Y = 311,303.47, said point also being on the Northern boundary of State of Louisiana - State Lease No. 16934; thence on and along the Northern and Western boundaries of said State of Louisiana - State Lease No. 16934 the following courses and distances, to-wit: South 71 degrees 09 minutes 18 seconds West 2,050.94

feet to a point having Coordinates of X = 2,626,034.00 and Y = 310,641.00; and South 11 degrees 49 minutes 26 seconds East 3,127.36 feet to a point having Coordinates of X = 2,626,674.81 and Y = 307,580.00, said point also being on the South line of said Block 26, Main Pass Area, Revised; thence West 6,074.81 feet on and along said South line of said Block 26, Main Pass Area, Revised, to the point of beginning, containing approximately **1,985.78 acres**, all as more particularly outlined on a plat on file in the Office of Mineral Resources, Department of Natural Resources, as provided by the applicant. All bearings, distances and coordinates are based on Louisiana Coordinate System of 1927, (North or South Zone), where applicable.

NOTE: The above description of the Tract nominated for lease has been provided and corrected, where required, exclusively by the nomination party. Any mineral lease selected from this Tract and awarded by the Louisiana State Mineral Board shall be without warranty of any kind, either express, implied, or statutory, including, but not limited to, the implied warranties of merchantability and fitness for a particular purpose. Should the mineral lease awarded by the Louisiana State Mineral Board be subsequently modified, cancelled or abrogated due to the existence of conflicting leases, operating agreements, private claims or other future obligations or conditions which may affect all or any portion of the leased Tract, it shall not relieve the Lessee of the obligation to pay any bonus due thereon to the Louisiana State Mineral Board, nor shall the Louisiana State Mineral Board be obligated to refund any consideration paid by the Lessor prior to such modification, cancellation, or abrogation, including, but not limited to, bonuses, rentals and royalties.

NOTE: The State of Louisiana does hereby reserve, and this lease shall be subject to, the imprescriptible right of surface use in the nature of a servitude in favor of the Department of Natural Resources, including its Offices and Commissions, for the sole purpose of implementing, constructing, servicing and maintaining approved coastal zone management and/or restoration projects. Utilization of any and all rights derived under this lease by the mineral lessee, its agents, successors or assigns, shall not interfere with nor hinder the reasonable surface use by the Department of Natural Resources, its Offices or Commissions, as herein above reserved.

Applicant: Robert A. Schroeder, Inc.

Bidder	Cash Payment	Price / Acre	Rental	Oil	Gas	Other

TRACT 34900 - Portion of Block 26, Main Pass Area, Revised, Plaquemines Parish, Louisiana

All of the lands now or formerly constituting the beds and bottoms of all water bodies of every nature and description, and all islands and other lands formed by accretion, where allowed by law, or by reliction, and excepting tax adjudicated lands, belonging to the State of Louisiana and not presently under mineral lease on September 11, 2002, situated in Plaquemines Parish, Louisiana, and more particularly described as follows: Beginning at a point having Coordinates of X = 2,635,350.00 and Y = 307,580.00, said point also being the Southeast corner of Block 26, Main Pass Area, Revised; thence West 5,478.92 feet on and along the South line of said Block 26, Main Pass Area, Revised, to a point having Coordinates of X = 2,629,871.08 and Y = 307,580.00, said point also being on the Eastern boundary of State of Louisiana - State Lease No. 16937; thence on and along the Eastern and Northern boundaries of said State of Louisiana - State Lease No. 16937 the following courses and distances, to-wit: North 13 degrees 13 minutes 42 seconds West 4,156.28 feet to a point having Coordinates of X = 2,628,920.00 and Y = 311,626.00; and South 71 degrees 09 minutes 18 seconds West 998.52 feet to a point having Coordinates of X = 2,627,975.00 and Y = 311,303.47; thence North 3,178.17 feet to a point having Coordinates of X = 2,627,975.00 and Y = 314,481.64, said point also being on an Eastern boundary of State of Louisiana - State Lease No. 15127, as amended; thence North 57 degrees 13 minutes 03 seconds East 874.24 feet on and along said Eastern boundary of said State of Louisiana - State Lease No. 15127, as amended, to a point having Coordinates of X = 2,628,710.00 and Y = 314,955.00, said point also being the Southeast corner of State of Louisiana - State Lease No. 15985, as amended; thence on and along the Eastern and Northern boundaries of said State of Louisiana - State Lease No. 15985, as amended, the following courses and distances, to-wit: North 2,568.78 feet to a point having Coordinates of X = 2,628,710.00 and Y = 317,523.78; and West 735.00 feet to a point having Coordinates of X = 2,627,975.00 and Y = 317,523.78; thence North 4,806.22 feet to a point having Coordinates of X = 2,627,975.00 and Y = 322,330.00, said point also being on the North line of said Block 26, Main Pass Area, Revised; thence East 7,375.00 feet on and along said North line of said Block 26, Main Pass Area, Revised, to a point having Coordinates of X = 2,635,350.00 and Y = 322,330.00, said point also being the Northeast corner of said Block 26, Main Pass Area, Revised; thence South 400.00 feet on and along the East line of said Block 26, Main Pass Area, Revised, to a point having Coordinates of X = 2,635,350.00 and Y = 321,930.00, said point also being on the Western boundary of State of Louisiana - State Lease No. 17384; thence on and along the Western and Southern boundaries of said State of Louisiana - State Lease No. 17384 the following courses and distances, to-wit: South 16 degrees 36 minutes 25 seconds West 5,948.11 feet to a point having Coordinates of X = 2,633,650.00 and Y = 316,230.00; South 56 degrees 18 minutes 36 seconds East 1,261.94 feet to a point having Coordinates of X = 2,634,700.00 and Y = 315,530.00; and North 50 degrees 07 minutes 57 seconds East 846.87 feet to a point having Coordinates of X = 2,635,350.00 and Y = 316,072.86, said point also being on said East line of said Block 26, Main Pass Area, Revised; thence South

8,492.86 feet on and along said East line of said Block 26, Main Pass Area, Revised, to the point of beginning, **LESS AND EXCEPT** all those portions of State Lease Nos. 16935 and 16936 that may lie within the above described tract, containing approximately **1,913.30 acres**, all as more particularly outlined on a plat on file in the Office of Mineral Resources, Department of Natural Resources, as provided by the applicant. All bearings, distances and coordinates are based on Louisiana Coordinate System of 1927, (North or South Zone), where applicable.

NOTE: The above description of the Tract nominated for lease has been provided and corrected, where required, exclusively by the nomination party. Any mineral lease selected from this Tract and awarded by the Louisiana State Mineral Board shall be without warranty of any kind, either express, implied, or statutory, including, but not limited to, the implied warranties of merchantability and fitness for a particular purpose. Should the mineral lease awarded by the Louisiana State Mineral Board be subsequently modified, cancelled or abrogated due to the existence of conflicting leases, operating agreements, private claims or other future obligations or conditions which may affect all or any portion of the leased Tract, it shall not relieve the Lessee of the obligation to pay any bonus due thereon to the Louisiana State Mineral Board, not shall the Louisiana State Mineral Board be obligated to refund any consideration paid by the Lessor prior to such modification, cancellation, or abrogation, including, but not limited to, bonuses, rentals and royalties.

NOTE: The State of Louisiana does hereby reserve, and this lease shall be subject to, the imprescriptible right of surface use in the nature of a servitude in favor of the Department of Natural Resources, including its Offices and Commissions, for the sole purpose of implementing, constructing, servicing and maintaining approved coastal zone management and/or restoration projects. Utilization of any and all rights derived under this lease by the mineral lessee, its agents, successors or assigns, shall not interfere with nor hinder the reasonable surface use by the Department of Natural Resources, its Offices or Commissions, as herein above reserved.

Applicant: Robert A. Schroeder, Inc.

Bidder	Cash Payment	Price / Acre	Rental	Oil	Gas	Other

BLOCK 21

X = 2, 635, 350
Y = 322, 330

BLK 32
294

SOUTH
400'

X = 2, 635, 350
Y = 321, 930

SL 16933

X = 2, 627, 975
Y = 322, 330

EAST

7375'

SL 16935

BRETON SOUND

X = 2, 627, 975.00
Y = 317, 523.78

NORTH

735'

X = 2, 628, 710.00
Y = 317, 523.78

SL 15985

WEST

Humble
SL 4456

Kerr McGee Corp.
SL 12114

SL 15985

SL 15827

SL 15127

NORTH

2568.78'

X = 2, 628, 710
Y = 314, 955

N57° 13' 03" E
874.24'

X = 2, 627, 975.00
Y = 314, 481.64

X = 2, 634, 700
Y = 315, 530

TR 34900
1,913.30 ± ACS.
SEPT., 2002

X = 2, 627, 975.00
Y = 311, 303.47

BLOCK 26

NORTH

3178.17'

X = 2, 628, 920
Y = 311, 626

S71° 09' 18" W
998.52'

SL 16934

SL 16937

Conoco
SL 14899

N13° 13' 42" W
4156.28'

SL 16936

X = 2, 629, 871.08
Y = 307, 580.00

BLOCK 31

WEST

5478.92'

BLK 48

MAIN PASS AREA, REVISED
BRETON SOUND AREA

P.O.B.

X = 2, 635, 350
Y = 307, 580
S.E. COR. BL. 26



BLOCK 26
MAIN PASS AREA, REVISED
PLAQUEMINES PARISH, LOUISIANA

SCALE 1" = 2000'



SCALE

ALL COORDINATES, BEARINGS AND DISTANCES ARE GRID, AND ARE ON THE LOUISIANA LAMBERT PLANE COORDINATE SYSTEM, SOUTH ZONE, 1927 NORTH AMERICAN DATUM.