

TRACT 34871 - Lafourche Parish, Louisiana

All of the lands now or formerly constituting the beds and bottoms of all water bodies of every nature and description, and all islands and other lands formed by accretion, where allowed by law, or by reliction, and excepting tax adjudicated lands, belonging to the State of Louisiana and not presently under mineral lease on September 11, 2002, situated in Lafourche Parish, Louisiana, and more particularly described as follows: Beginning at a point having Coordinates of X = 2,339,313.00 and Y = 167,988.00; thence East 7,580.94 feet to a point having Coordinates of X = 2,346,893.94 and Y = 167,988.00; thence South 00 degrees 31 minutes 02 seconds East 2,670.11 feet to a point having Coordinates of X = 2,346,918.05 and Y = 165,318.00; thence West 7,605.04 feet to a point having Coordinates of X = 2,339,313.00 and Y = 165,318.00; thence North 2,670.00 feet to the point of beginning, containing approximately **465.41 acres**, all as more particularly outlined on a plat on file in the Office of Mineral Resources, Department of Natural Resources, as provided by the applicant. All bearings, distances and coordinates are based on Louisiana Coordinate System of 1927, (North or South Zone), where applicable.

NOTE: The above description of the Tract nominated for lease has been provided and corrected, where required, exclusively by the nomination party. Any mineral lease selected from this Tract and awarded by the Louisiana State Mineral Board shall be without warranty of any kind, either express, implied, or statutory, including, but not limited to, the implied warranties of merchantability and fitness for a particular purpose. Should the mineral lease awarded by the Louisiana State Mineral Board be subsequently modified, cancelled or abrogated due to the existence of conflicting leases, operating agreements, private claims or other future obligations or conditions which may affect all or any portion of the leased Tract, it shall not relieve the Lessee of the obligation to pay any bonus due thereon to the Louisiana State Mineral Board, nor shall the Louisiana State Mineral Board be obligated to refund any consideration paid by the Lessor prior to such modification, cancellation, or abrogation, including, but not limited to, bonuses, rentals and royalties.

NOTE: The Department of Wildlife and Fisheries has designated certain areas in the coastal waters of the State of Louisiana as Oyster Seed Bed Areas. The exact location of those Seed Bed Areas must be obtained from the Department of Wildlife and Fisheries and any work done under a mineral lease from the State of Louisiana may necessarily be conducted in conformity with the rules and regulations promulgated by the said Department of Wildlife and Fisheries for Oyster Seed Bed Areas.

NOTE: The State of Louisiana does hereby reserve, and this lease shall be subject to, the imprescriptible right of surface use in the nature of a servitude in favor of the Department of Natural Resources, including its Offices and Commissions, for the sole purpose of implementing, constructing, servicing and maintaining approved coastal zone management and/or restoration projects. Utilization of any and all rights derived under this lease by the mineral lessee, its agents, successors or assigns,

shall not interfere with nor hinder the reasonable surface use by the Department of Natural Resources, its Offices or Commissions, as herein above reserved.

Applicant: Cypress Energy Corporation

Bidder	Cash Payment	Price / Acre	Rental	Oil	Gas	Other



TIMBALIER BAY

TIMBALIER BAY

TIMBALIER BAY

2000' 0' 2000'



TIMBALIER

TR 34871
465.41 ± ACS.
SEPT., 2002

P.O.B.
X= 2,339,313.00'
Y= 167,988.00'

LAFOURCHE PARISH

TRACT 34872 - Jefferson Parish, Louisiana

All of the lands now or formerly constituting the beds and bottoms of all water bodies of every nature and description, and all islands and other lands formed by accretion, where allowed by law, or by reliction, and excepting tax adjudicated lands, belonging to the State of Louisiana and not presently under mineral lease on September 11, 2002, situated in Jefferson Parish, Louisiana, and more particularly described as follows: Beginning at a point having Coordinates of X = 2,428,230.30 and Y = 251,566.77; thence East 2,396.15 feet to a point on the Western boundary of State Lease No. 17432 having Coordinates of X = 2,430.626.45 and Y = 251,566.77; thence along the boundaries of said State Lease No. 17432 the following courses: North 50 degrees 02 minutes 01 seconds East 490.52 feet and East approximately 1,600 feet to a point on the Western boundary of State Lease No. 356, as amended; thence Northerly, Westerly and Northwesterly on the said Western boundary of said State Lease No. 356 to its Northwest corner; thence Southerly approximately 3,475 feet to a point of beginning, **LESS AND EXCEPT**, if any, that portion of State Lease No. 356, as amended that may lie within the above described tract, containing approximately **62 acres**, all as more particularly outlined on a plat on file in the Office of Mineral Resources, Department of Natural Resources, as provided by the applicant. All bearings, distances and coordinates are based on Louisiana Coordinate System of 1927, (North or South Zone), where applicable.

NOTE: The above description of the Tract nominated for lease has been provided and corrected, where required, exclusively by the nomination party. Any mineral lease selected from this Tract and awarded by the Louisiana State Mineral Board shall be without warranty of any kind, either express, implied, or statutory, including, but not limited to, the implied warranties of merchantability and fitness for a particular purpose. Should the mineral lease awarded by the Louisiana State Mineral Board be subsequently modified, cancelled or abrogated due to the existence of conflicting leases, operating agreements, private claims or other future obligations or conditions which may affect all or any portion of the leased Tract, it shall not relieve the Lessee of the obligation to pay any bonus due thereon to the Louisiana State Mineral Board, nor shall the Louisiana State Mineral Board be obligated to refund any consideration paid by the Lessor prior to such modification, cancellation, or abrogation, including, but not limited to, bonuses, rentals and royalties.

NOTE: The Department of Wildlife and Fisheries has designated certain areas in the coastal waters of the State of Louisiana as Oyster Seed Bed Areas. The exact location of those Seed Bed Areas must be obtained from the Department of Wildlife and Fisheries and any work done under a mineral lease from the State of Louisiana may necessarily be conducted in conformity with the rules and regulations promulgated by the said Department of Wildlife and Fisheries for Oyster Seed Bed Areas.

NOTE: The State of Louisiana does hereby reserve, and this lease shall be subject to, the imprescriptible right of surface use in the nature of a

servitude in favor of the Department of Natural Resources, including its Offices and Commissions, for the sole purpose of implementing, constructing, servicing and maintaining approved coastal zone management and/or restoration projects. Utilization of any and all rights derived under this lease by the mineral lessee, its agents, successors or assigns, shall not interfere with nor hinder the reasonable surface use by the Department of Natural Resources, its Offices or Commissions, as herein above reserved.

Applicant: Doyle Land Services, Inc.

Bidder	Cash Payment	Price / Acre	Rental	Oil	Gas	Other

R 24 E

209

Bassa Bassa

Lights

BASSA BASSA BAY

11

BASSA BASSA BAY

WATERWAY

Platform

Falican

TR 34872
62 ± ACS.
SEPT., 2002

P. O. B.
X=2,428,230.30
Y=251,566.77

Blnd

BARATARIA BAY

SL 17432

SL 356,
As Amended

BASSA BAY GAS FIELD

WEST CHAMPAGNE BAY

Bassa

EAST CHAMPAGNE BAY

SL 2084

BAY

GAS FIELD Platform

OIL AND

Mile 5 ISLAND

NAD 27 LAMBERT LA. SOUTH ZONE

Jefferson Parish, Louisiana

2000' 0' 2000'

TRACT 34873 - Portion of Block 73, Chandeleur Sound Area, St. Bernard Parish, Louisiana

All of the lands now or formerly constituting the beds and bottoms of all water bodies of every nature and description, and all islands and other lands formed by accretion, where allowed by law, or by reliction, and excepting tax adjudicated lands, belonging to the State of Louisiana and not presently under mineral lease on September 11, 2002, situated in Terrebonne Parish, Louisiana, and more particularly described as follows: Beginning at a point on the South line of Block 73, Chandeleur Sound Area, having Coordinates of X = 2,584,950.00 feet and Y = 381,330.00 feet; thence West 1,772.93 feet along the South line of said Block 73 to a point on the South line of State Lease No. 15959 having Coordinates of X = 2,583,177.07 feet and Y = 381,330.00; thence North 66 degrees 59 minutes 37 seconds East 1,015.19 feet to a point on the East line of said State Lease No. 15959 having Coordinates of X = 2,584,111.51 and Y = 381,726.77; thence North 63 degrees 47 minutes 53 seconds East 934.52 feet to a point on the East line of said State Lease No. 15959 having Coordinates of X = 2,584,950.00 and Y = 382,139.39; thence South 809.39 feet to the point of beginning, containing approximately **15.86 acres**, all as more particularly outlined on a plat on file in the Office of Mineral Resources, Department of Natural Resources, as provided by the applicant. All bearings, distances and coordinates are based on Louisiana Coordinate System of 1927, (North or South Zone), where applicable.

NOTE: The above description of the Tract nominated for lease has been provided and corrected, where required, exclusively by the nomination party. Any mineral lease selected from this Tract and awarded by the Louisiana State Mineral Board shall be without warranty of any kind, either express, implied, or statutory, including, but not limited to, the implied warranties of merchantability and fitness for a particular purpose. Should the mineral lease awarded by the Louisiana State Mineral Board be subsequently modified, cancelled or abrogated due to the existence of conflicting leases, operating agreements, private claims or other future obligations or conditions which may affect all or any portion of the leased Tract, it shall not relieve the Lessee of the obligation to pay any bonus due thereon to the Louisiana State Mineral Board, nor shall the Louisiana State Mineral Board be obligated to refund any consideration paid by the Lessor prior to such modification, cancellation, or abrogation, including, but not limited to, bonuses, rentals and royalties.

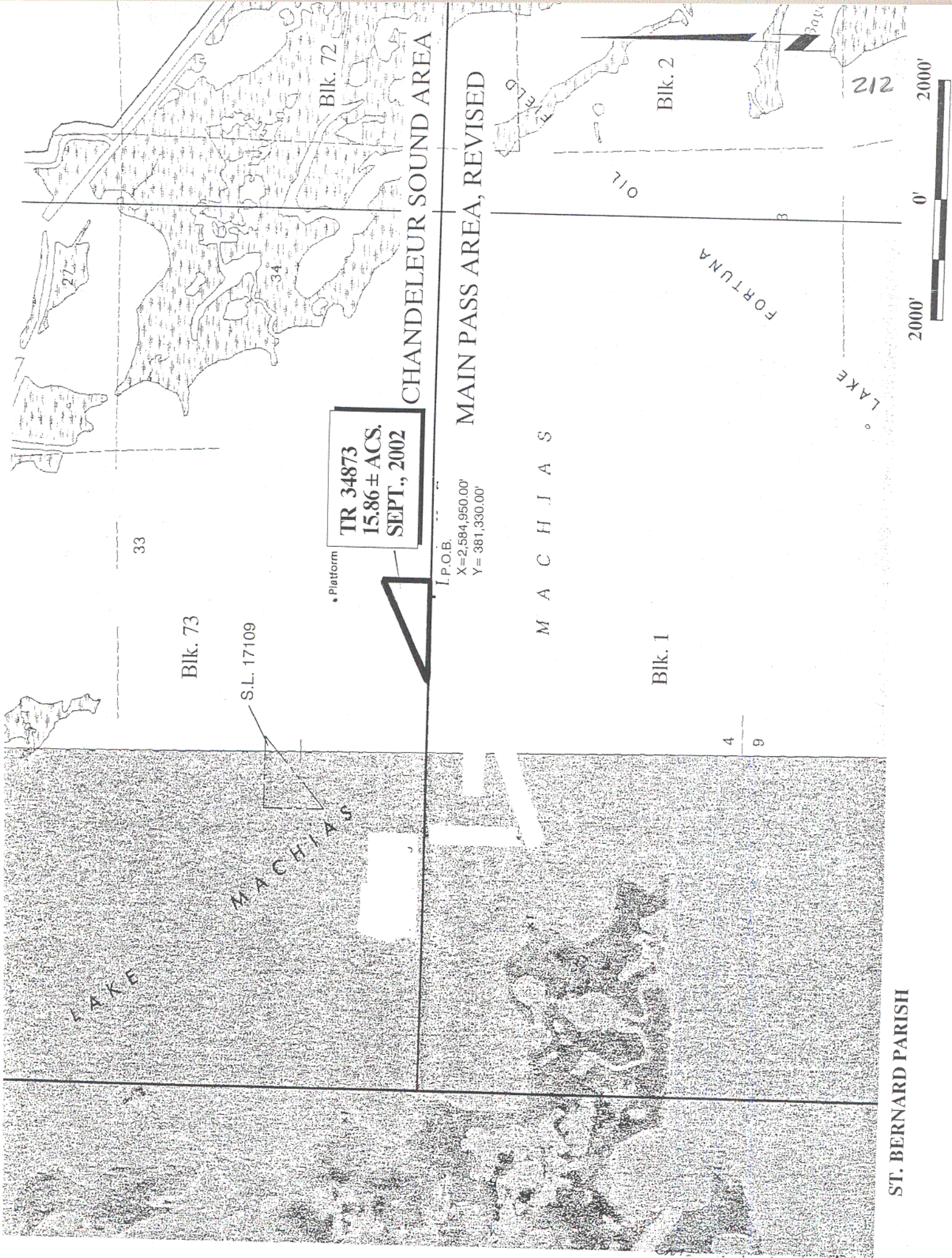
NOTE: The Department of Wildlife and Fisheries has designated certain areas in the coastal waters of the State of Louisiana as Oyster Seed Bed Areas. The exact location of those Seed Bed Areas must be obtained from the Department of Wildlife and Fisheries and any work done under a mineral lease from the State of Louisiana may necessarily be conducted in conformity with the rules and regulations promulgated by the said Department of Wildlife and Fisheries for Oyster Seed Bed Areas.

NOTE: The State of Louisiana does hereby reserve, and this lease shall be subject to, the imprescriptible right of surface use in the nature of a

servitude in favor of the Department of Natural Resources, including its Offices and Commissions, for the sole purpose of implementing, constructing, servicing and maintaining approved coastal zone management and/or restoration projects. Utilization of any and all rights derived under this lease by the mineral lessee, its agents, successors or assigns, shall not interfere with nor hinder the reasonable surface use by the Department of Natural Resources, its Offices or Commissions, as herein above reserved.

Applicant: South Louisiana Minerals, Inc.

Bidder	Cash Payment	Price / Acre	Rental	Oil	Gas	Other



TR 34873
15.86 ± ACS,
SEPT., 2002

I.P.O.B.
X=2,584,950.00'
Y=381,330.00'

Platform

33

Blk. 73

S.L. 17109

MACHIAS

LAKE

CHANDELEUR SOUND AREA

Blk. 72

MAIN PASS AREA, REVISED

MACHIAS

Blk. 1

4
9

Blk. 2

LAKE

FORTUNA

OIL FIELD

212

2000' 0' 2000'

ST. BERNARD PARISH

TRACT 34874 - Portion of Block 1, Main Pass Area, Revised, St. Bernard Parish, Louisiana

All of the lands now or formerly constituting the beds and bottoms of all water bodies of every nature and description, and all islands and other lands formed by accretion, where allowed by law, or by reliction, and excepting tax adjudicated lands, belonging to the State of Louisiana and not presently under mineral lease on September 11, 2002, situated in St. Bernard Parish, Louisiana, and more particularly described as follows: Beginning at a point in the Northern boundary of Block 1, Main Pass Area, Revised having Coordinates of X = 2,580,650.00 and Y = 381,330.00; thence East 1,608.57 feet along the Northern boundary of said Block 1 to the Northwest corner of State Lease No. 15960, as Revised, having Coordinates of X = 2,582,258.57 and Y = 381,330.00; thence along the boundary of said State Lease No. 15960, as revised the following courses: South 11 degrees 08 minutes 03 seconds West 394.55 feet to a point having Coordinates of X = 2,582,182.38 and Y = 380,942.88; North 69 degrees 05 minutes 55 seconds East 882.87 feet to a point having Coordinates of X = 2,583,007.15 and Y = 381,257.85; North 66 degrees 59 minutes 37 seconds East 184.60 feet to its Northeast corner, said corner also being a point on the North boundary of said Block 1, having Coordinates of X = 2,583,177.07 and Y = 381,330.00; thence East 1,492.93 feet along the North boundary of said Block 1 to a point having Coordinates of X = 2,584,670.00 and Y = 381,330.00; thence South 430.00 feet to a point having Coordinates of X = 2,584,670.00 and Y = 380,900.00; thence South 70 degrees 47 minutes 56 seconds West 4,256.81 feet to a point having Coordinates of X = 2,580,650.00 and Y = 379,500.00; thence North 1,830.00 feet to the point of beginning, containing approximately **100.13 acres**, all as more particularly outlined on a plat on file in the Office of Mineral Resources, Department of Natural Resources, as provided by the applicant. All bearings, distances and coordinates are based on Louisiana Coordinate System of 1927, (North or South Zone), where applicable.

NOTE: The above description of the Tract nominated for lease has been provided and corrected, where required, exclusively by the nomination party. Any mineral lease selected from this Tract and awarded by the Louisiana State Mineral Board shall be without warranty of any kind, either express, implied, or statutory, including, but not limited to, the implied warranties of merchantability and fitness for a particular purpose. Should the mineral lease awarded by the Louisiana State Mineral Board be subsequently modified, cancelled or abrogated due to the existence of conflicting leases, operating agreements, private claims or other future obligations or conditions which may affect all or any portion of the leased Tract, it shall not relieve the Lessee of the obligation to pay any bonus due thereon to the Louisiana State Mineral Board, nor shall the Louisiana State Mineral Board be obligated to refund any consideration paid by the Lessor prior to such modification, cancellation, or abrogation, including, but not limited to, bonuses, rentals and royalties.

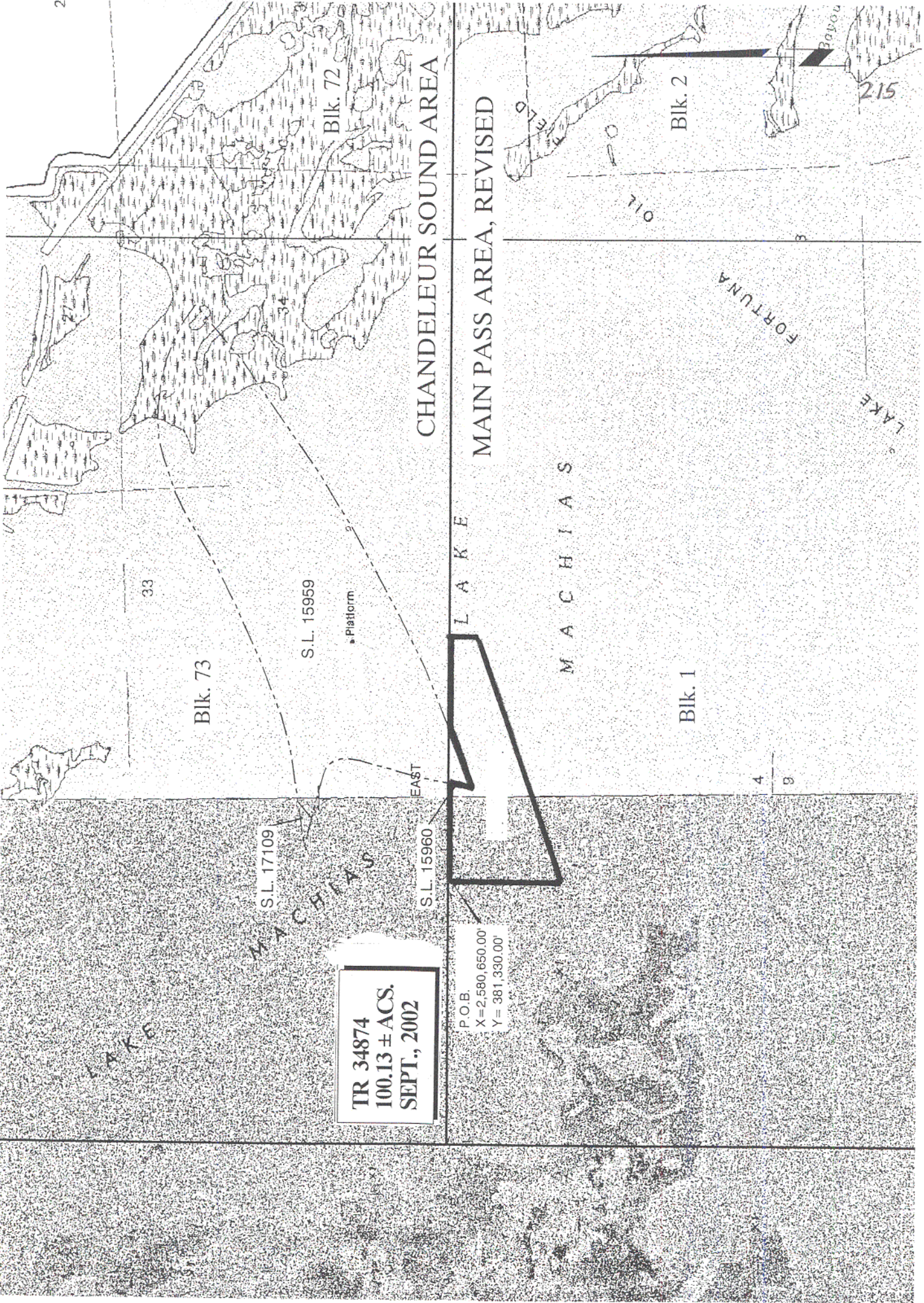
NOTE: The Department of Wildlife and Fisheries has designated certain areas in the coastal waters of the State of Louisiana as Oyster Seed Bed

Areas. The exact location of those Seed Bed Areas must be obtained from the Department of Wildlife and Fisheries and any work done under a mineral lease from the State of Louisiana may necessarily be conducted in conformity with the rules and regulations promulgated by the said Department of Wildlife and Fisheries for Oyster Seed Bed Areas.

NOTE: The State of Louisiana does hereby reserve, and this lease shall be subject to, the imprescriptible right of surface use in the nature of a servitude in favor of the Department of Natural Resources, including its Offices and Commissions, for the sole purpose of implementing, constructing, servicing and maintaining approved coastal zone management and/or restoration projects. Utilization of any and all rights derived under this lease by the mineral lessee, its agents, successors or assigns, shall not interfere with nor hinder the reasonable surface use by the Department of Natural Resources, its Offices or Commissions, as herein above reserved.

Applicant: South Louisiana Minerals, Inc.

Bidder	Cash Payment	Price / Acre	Rental	Oil	Gas	Other



CHANDELEUR SOUND AREA
 MAIN PASS AREA, REVISED

TR 34874
 100.13 ± ACS,
 SEPT., 2002

P.O.B.
 X = 2,580,650.00'
 Y = 381,330.00'

2000' 0' 2000'

ST. BERNARD PARISH

TRACT 34875 - Portion of Block 12, Main Pass Area, Revised, Plaquemines Parish, Louisiana

All of the lands now or formerly constituting the beds and bottoms of all water bodies of every nature and description, and all islands and other lands formed by accretion, where allowed by law, or by reliction, and excepting tax adjudicated lands, belonging to the State of Louisiana and not presently under mineral lease on September 11, 2002, situated in Plaquemines Parish, Louisiana, and more particularly described as follows: Beginning at a point having Coordinates of X = 2,580,960.00 and Y = 351,830.00, said point also being on the South line of Block 12, Main Pass Area, Revised; thence West 3,758.07 feet on and along said South line of said Block 12, Main Pass Area, Revised, to a point having Coordinates of X = 2,577,201.93 and Y = 351,830.00, said point also being the Southwest corner of said Block 12, Main Pass Area, Revised; thence North 00 degrees 54 minutes 30 seconds West 3,814.14 feet on and along the West line of Block 12, Main Pass Area, Revised, to a point having Coordinates of X = 2,577,141.47 and Y = 355,643.66; thence South 56 degrees 24 minutes 03 seconds East 3,239.76 feet to a point having Coordinates of X = 2,579,839.96 and Y = 353,850.84, said point also being on a Southern boundary of State of Louisiana - State Lease No. 16490; thence South 59 degrees 42 minutes 46 seconds East 1,297.08 feet on and along said Southern boundary of said State of Louisiana - State Lease No. 16490 to a point having Coordinates of X = 2,580,960.00 and Y = 353,196.68, said point also being on a Western boundary of State of Louisiana - State Lease No. 17448; thence South 1,366.68 feet on and along said Western boundary of said State of Louisiana - State Lease No. 17448 to the point of beginning, containing approximately **221.62 acres**, all as more particularly outlined on a plat on file in the Office of Mineral Resources, Department of Natural Resources, as provided by the applicant. All bearings, distances and coordinates are based on Louisiana Coordinate System of 1927, (North or South Zone), where applicable.

NOTE: The above description of the Tract nominated for lease has been provided and corrected, where required, exclusively by the nomination party. Any mineral lease selected from this Tract and awarded by the Louisiana State Mineral Board shall be without warranty of any kind, either express, implied, or statutory, including, but not limited to, the implied warranties of merchantability and fitness for a particular purpose. Should the mineral lease awarded by the Louisiana State Mineral Board be subsequently modified, cancelled or abrogated due to the existence of conflicting leases, operating agreements, private claims or other future obligations or conditions which may affect all or any portion of the leased Tract, it shall not relieve the Lessee of the obligation to pay any bonus due thereon to the Louisiana State Mineral Board, nor shall the Louisiana State Mineral Board be obligated to refund any consideration paid by the Lessor prior to such modification, cancellation, or abrogation, including, but not limited to, bonuses, rentals and royalties.

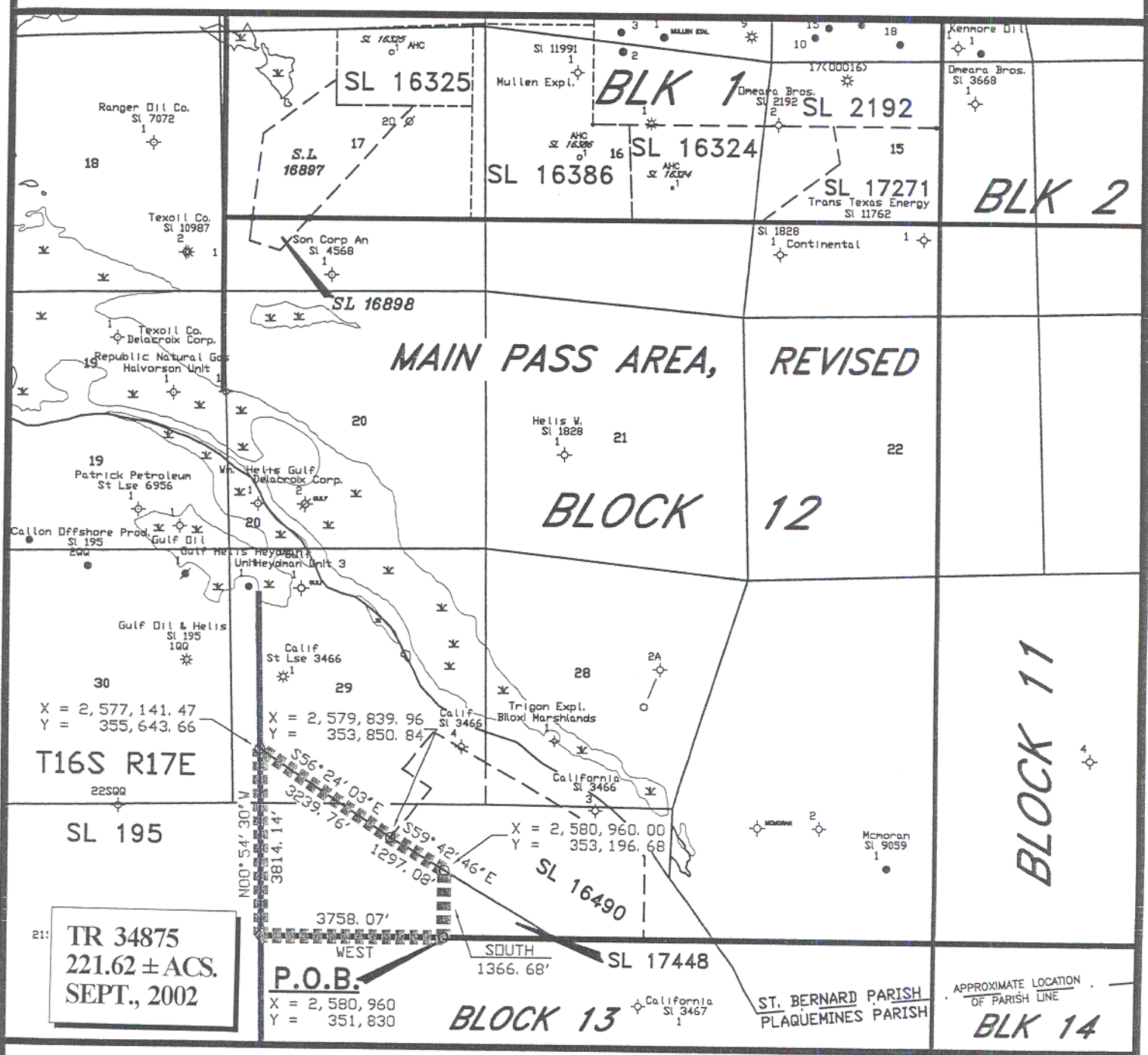
NOTE: The Department of Wildlife and Fisheries has designated certain areas in the coastal waters of the State of Louisiana as Oyster Seed Bed

Areas. The exact location of those Seed Bed Areas must be obtained from the Department of Wildlife and Fisheries and any work done under a mineral lease from the State of Louisiana may necessarily be conducted in conformity with the rules and regulations promulgated by the said Department of Wildlife and Fisheries for Oyster Seed Bed Areas.

NOTE: The State of Louisiana does hereby reserve, and this lease shall be subject to, the imprescriptible right of surface use in the nature of a servitude in favor of the Department of Natural Resources, including its Offices and Commissions, for the sole purpose of implementing, constructing, servicing and maintaining approved coastal zone management and/or restoration projects. Utilization of any and all rights derived under this lease by the mineral lessee, its agents, successors or assigns, shall not interfere with nor hinder the reasonable surface use by the Department of Natural Resources, its Offices or Commissions, as herein above reserved.

Applicant: Robert A. Schroeder, Inc.

Bidder	Cash Payment	Price / Acre	Rental	Oil	Gas	Other



21: TR 34875
221.62 ± ACS.
SEPT., 2002

P.O.B.
X = 2,580,960
Y = 351,830

APPROXIMATE LOCATION
OF PARISH LINE
BLK 14



BLOCK 12
MAIN PASS AREA, REVISED
PLAQUEMINES PARISH, LOUISIANA
SCALE 1" = 3000'

ALL COORDINATES, BEARINGS AND DISTANCES
ARE GRID, AND ARE ON THE LOUISIANA
LAMBERT PLANE COORDINATE SYSTEM,
SOUTH ZONE, 1927 NORTH AMERICAN
DATUM.



TRACT 34876 - Plaquemines Parish, Louisiana

All of the lands now or formerly constituting the beds and bottoms of all water bodies of every nature and description, and all islands and other lands formed by accretion, where allowed by law, or by reliction, and excepting tax adjudicated lands, belonging to the State of Louisiana and not presently under mineral lease on September 11, 2002, situated in Plaquemines Parish, Louisiana, and more particularly described as follows: Beginning at a point having Coordinates of X = 2,583,200.00 and Y = 306,000.00; thence West 16,000.00 feet to a point having Coordinates of X = 2,567,200.00 and Y = 306,000.00; thence North 6,765.00 feet to a point; thence Easterly approximately 15,982 feet to a point having Coordinates of X = 2,583,200.00 and Y = 313,010.00; thence South 7,010.00 feet to the point of beginning, **LESS AND EXCEPT**, if any, that portion of State Lease No. 195, as amended, that may lie within the above described tract, containing approximately **2,483 acres**, all as more particularly outlined on a plat on file in the Office of Mineral Resources, Department of Natural Resources, as provided by the applicant. All bearings, distances and coordinates are based on Louisiana Coordinate System of 1927, (North or South Zone), where applicable.

NOTE: The above description of the Tract nominated for lease has been provided and corrected, where required, exclusively by the nomination party. Any mineral lease selected from this Tract and awarded by the Louisiana State Mineral Board shall be without warranty of any kind, either express, implied, or statutory, including, but not limited to, the implied warranties of merchantability and fitness for a particular purpose. Should the mineral lease awarded by the Louisiana State Mineral Board be subsequently modified, cancelled or abrogated due to the existence of conflicting leases, operating agreements, private claims or other future obligations or conditions which may affect all or any portion of the leased Tract, it shall not relieve the Lessee of the obligation to pay any bonus due thereon to the Louisiana State Mineral Board, nor shall the Louisiana State Mineral Board be obligated to refund any consideration paid by the Lessor prior to such modification, cancellation, or abrogation, including, but not limited to, bonuses, rentals and royalties.

NOTE: The Department of Wildlife and Fisheries has designated certain areas in the coastal waters of the State of Louisiana as Oyster Seed Bed Areas. The exact location of those Seed Bed Areas must be obtained from the Department of Wildlife and Fisheries and any work done under a mineral lease from the State of Louisiana may necessarily be conducted in conformity with the rules and regulations promulgated by the said Department of Wildlife and Fisheries for Oyster Seed Bed Areas.

NOTE: The State of Louisiana does hereby reserve, and this lease shall be subject to, the imprescriptible right of surface use in the nature of a servitude in favor of the Department of Natural Resources, including its Offices and Commissions, for the sole purpose of implementing, constructing, servicing and maintaining approved coastal zone management and/or restoration projects. Utilization of any and all rights derived

under this lease by the mineral lessee, its agents, successors or assigns, shall not interfere with nor hinder the reasonable surface use by the Department of Natural Resources, its Offices or Commissions, as herein above reserved.

Applicant: C.M. Biagas & Associates Hydrocarbon Consultants

Bidder	Cash Payment	Price / Acre	Rental	Oil	Gas	Other

R E 17

S. L. 195

Telegraph Point

T

18 O R N I A

B A Y

S

TR 34876
2,483 ± ACS.
SEPT., 2002

P.O.B.
X = 2,583,200.00
Y = 306,000.00

NAD 1927 (South Zone)

221

PLAQUEMINES PARISH, LOUISIANA

SCALE : 1" = 2000'

TRACT 34877 - Portion of Block 14, Main Pass Area, Revised, Plaquemines and St. Bernard Parishes, Louisiana

All of the lands now or formerly constituting the beds and bottoms of all water bodies of every nature and description, and all islands and other lands formed by accretion, where allowed by law, or by reliction, and excepting tax adjudicated lands, belonging to the State of Louisiana and not presently under mineral lease on September 11, 2002, situated in Plaquemines and St. Bernard Parishes, Louisiana, and more particularly described as follows: Beginning at a point on the East line of Block 14, Main Pass Area, Revised, also being the Northeast corner of State Lease No. 16635 having Coordinates of X = 2,605,850.00 and Y = 344,455.00; thence West 3,750.00 feet along the North line of said State Lease No. 16635 to its Northwest corner, also being the Northeast corner of State Lease No. 16391 having Coordinates of X = 2,602,100.00 and Y = 344,455.00; thence West 1,000.00 feet along the North line of said State Lease No. 16391 to its Northwest corner, also being the Northeast corner of State Lease No. 15529 having Coordinates of X = 2,601,100.00 and Y = 344,455.00; thence West 1,650.00 feet along the North line of said State Lease No. 15529 to a point, also being the Southeast corner of State Lease No. 16634 having Coordinates of X = 2,599,450.00 and Y = 344,455.00; thence North 3,600.00 feet along the East line of said State Lease No. 16634 to its Northeast corner having Coordinates of X = 2,599,450.00 and Y = 348,055.00; thence West 975.00 feet along the North line of said State Lease No. 16634 to its most Northerly Northwest corner having Coordinates of X = 2,598,475.00 and Y = 348,055.00; thence North 3,775.00 feet to a point on the North line of said Block 14 having Coordinates of X = 2,598,475.00 and Y = 351,830.00; thence East 2,175.00 feet along the North line of said Block 14 to a point, also being the Northwest corner of State Lease No. 16733 having Coordinates of X = 2,600,650.00 and Y = 351,830.00; thence along the boundary of said State Lease No. 16733 the following courses: South 3,800.00 feet, East 1,200.00 feet, and North 3,800.00 feet to it's Northeast corner, also being a point on the North line of said Block 14 having Coordinates of X = 2,601,850.00 and Y = 351,830.00; thence East 4,000.00 feet on the North line of said Block 14 to its Northeast corner having Coordinates of X = 2,605,850.00 and Y = 351,830.00; thence South 7,375.00 feet on the East line of said Block 14 to the point of beginning, containing approximately **1,063.38 acres**, all as more particularly outlined on a plat on file in the Office of Mineral Resources, Department of Natural Resources, as provided by the applicant. All bearings, distances and coordinates are based on Louisiana Coordinate System of 1927, (North or South Zone), where applicable.

NOTE: The above description of the Tract nominated for lease has been provided and corrected, where required, exclusively by the nomination party. Any mineral lease selected from this Tract and awarded by the Louisiana State Mineral Board shall be without warranty of any kind, either express, implied, or statutory, including, but not limited to, the implied warranties of merchantability and fitness for a particular purpose. Should the mineral lease awarded by the Louisiana State Mineral Board be subsequently modified, cancelled or abrogated due to the

existence of conflicting leases, operating agreements, private claims or other future obligations or conditions which may affect all or any portion of the leased Tract, it shall not relieve the Lessee of the obligation to pay any bonus due thereon to the Louisiana State Mineral Board, not shall the Louisiana State Mineral Board be obligated to refund any consideration paid by the Lessor prior to such modification, cancellation, or abrogation, including, but not limited to, bonuses, rentals and royalties.

NOTE: The State of Louisiana does hereby reserve, and this lease shall be subject to, the imprescriptible right of surface use in the nature of a servitude in favor of the Department of Natural Resources, including its Offices and Commissions, for the sole purpose of implementing, constructing, servicing and maintaining approved coastal zone management and/or restoration projects. Utilization of any and all rights derived under this lease by the mineral lessee, its agents, successors or assigns, shall not interfere with nor hinder the reasonable surface use by the Department of Natural Resources, its Offices or Commissions, as herein above reserved.

Applicant: Cash River Exploration, Inc.

Bidder	Cash Payment	Price / Acre	Rental	Oil	Gas	Other

224

Bik. 11

Bik. 10

TR 34877
1,063.38 ± ACS.
SEPT., 2002

SL 16730

St. Bernard Parish
Plaquemines Parish

Bik. 14

SL 16733

SL 16390

SL 16683

SL 16174

SL 16634

SL 16389

SL 16407

MAIN PASS AREA, REVISED

SL 16391

P. O. B.
X=2,605,850.00
Y= 344,455.00

SL 16408

Bik. 15

SL 15529

SL 16635

SL 16684

GULF OF MEXICO

NAD 27 LAMBERT LA. SOUTH ZONE

St. Bernard & Plaquemines Parishes, Louisiana



TRACT 34878 - Portion of Block 15, Main Pass Area, Revised, Plaquemines Parish, Louisiana

All of the lands now or formerly constituting the beds and bottoms of all water bodies of every nature and description, and all islands and other lands formed by accretion, where allowed by law, or by reliction, and excepting tax adjudicated lands, belonging to the State of Louisiana and not presently under mineral lease on September 11, 2002, situated in Plaquemines Parish, Louisiana, and more particularly described as follows: Beginning at the Northwest corner of Block 15, Main Pass Area, Revised, having Coordinates of X = 2,605,850.00 and Y = 351,830.00; thence East 3,450.00 feet along the North line of said Block 15 to a point, also being the most Northerly Northwest corner of State Lease No. 16174 having Coordinates of X = 2,609,300.00 and Y = 351,830.00; thence South 39 degrees 24 minutes 02 seconds West 5,435.30 feet along the boundary of said State Lease No. 16174 to its most Westerly Northwest corner, also being a point on the West line of said Block 15 having Coordinates of X = 2,605,850.00 and Y = 347,630.00; thence North 4,200.00 feet along the West line of said Block 15 to the point of beginning, containing approximately **166.32 acres**, all as more particularly outlined on a plat on file in the Office of Mineral Resources, Department of Natural Resources, as provided by the applicant. All bearings, distances and coordinates are based on Louisiana Coordinate System of 1927, (North or South Zone), where applicable.

NOTE: The above description of the Tract nominated for lease has been provided and corrected, where required, exclusively by the nomination party. Any mineral lease selected from this Tract and awarded by the Louisiana State Mineral Board shall be without warranty of any kind, either express, implied, or statutory, including, but not limited to, the implied warranties of merchantability and fitness for a particular purpose. Should the mineral lease awarded by the Louisiana State Mineral Board be subsequently modified, cancelled or abrogated due to the existence of conflicting leases, operating agreements, private claims or other future obligations or conditions which may affect all or any portion of the leased Tract, it shall not relieve the Lessee of the obligation to pay any bonus due thereon to the Louisiana State Mineral Board, nor shall the Louisiana State Mineral Board be obligated to refund any consideration paid by the Lessor prior to such modification, cancellation, or abrogation, including, but not limited to, bonuses, rentals and royalties.

NOTE: The State of Louisiana does hereby reserve, and this lease shall be subject to, the imprescriptible right of surface use in the nature of a servitude in favor of the Department of Natural Resources, including its Offices and Commissions, for the sole purpose of implementing, constructing, servicing and maintaining approved coastal zone management and/or restoration projects. Utilization of any and all rights derived under this lease by the mineral lessee, its agents, successors or assigns, shall not interfere with nor hinder the reasonable surface use by the Department of Natural Resources, its Offices or Commissions, as herein above reserved.

Applicant: Cash River Exploration, Inc.

Bidder	Cash Payment	Price / Acre	Rental	Oil	Gas	Other

227

BIK. 11

BIK. 10

SL 16172

SL 16730

P. O. B.
X=2,605,850.00
Y= 351,830.00

St. Bernard Parish
Plaquemines Parish

SL 16733

SL 16390

TR 34878
166.32 ± ACS.
SEPT., 2002

CT
S

SL 16683

SL 16634

SL 16174

BIK. 14

BIK. 15

SL 16407

MAIN PASS AREA, REVISED

SL 15529

SL 16391

SL 16408

GULF OF MEXICO

SL 16635

SL 16684

NAD 27
LAMBERT LA. SOUTH ZONE

Plaquemines Parish, Louisiana



TRACT 34879 - Portion of Block 16, Main Pass Area, Revised, Plaquemines Parish, Louisiana

All of the lands now or formerly constituting the beds and bottoms of all water bodies of every nature and description, and all islands and other lands formed by accretion, where allowed by law, or by reliction, and excepting tax adjudicated lands, belonging to the State of Louisiana and not presently under mineral lease on September 11, 2002, situated in Plaquemines Parish, Louisiana, and more particularly described as follows: Beginning at a point on the West line of Block 16, Main Pass Area, Revised, having Coordinates of X = 2,620,600.00 and Y = 344,455.00; thence North 7,375.00 feet along the West line of said Block 16 to its Northwest corner having Coordinates of X = 2,620,600.00 and Y = 351,830.00; thence East 14,750.00 feet along the North line of Block 16 to its Northeast corner having Coordinates of X = 2,635,350.00 and Y = 351,830.00; thence South 7,375.00 feet along the East line of said Block 16 to a point having Coordinates of X = 2,635,350.00 and Y = 344,455.00; thence West 14,750.00 feet to the point of beginning, containing approximately **2,497.27 acres**, all as more particularly outlined on a plat on file in the Office of Mineral Resources, Department of Natural Resources, as provided by the applicant. All bearings, distances and coordinates are based on Louisiana Coordinate System of 1927, (North or South Zone), where applicable.

NOTE: The above description of the Tract nominated for lease has been provided and corrected, where required, exclusively by the nomination party. Any mineral lease selected from this Tract and awarded by the Louisiana State Mineral Board shall be without warranty of any kind, either express, implied, or statutory, including, but not limited to, the implied warranties of merchantability and fitness for a particular purpose. Should the mineral lease awarded by the Louisiana State Mineral Board be subsequently modified, cancelled or abrogated due to the existence of conflicting leases, operating agreements, private claims or other future obligations or conditions which may affect all or any portion of the leased Tract, it shall not relieve the Lessee of the obligation to pay any bonus due thereon to the Louisiana State Mineral Board, nor shall the Louisiana State Mineral Board be obligated to refund any consideration paid by the Lessor prior to such modification, cancellation, or abrogation, including, but not limited to, bonuses, rentals and royalties.

NOTE: The State of Louisiana does hereby reserve, and this lease shall be subject to, the imprescriptible right of surface use in the nature of a servitude in favor of the Department of Natural Resources, including its Offices and Commissions, for the sole purpose of implementing, constructing, servicing and maintaining approved coastal zone management and/or restoration projects. Utilization of any and all rights derived under this lease by the mineral lessee, its agents, successors or assigns, shall not interfere with nor hinder the reasonable surface use by the Department of Natural Resources, its Offices or Commissions, as herein above reserved.

Applicant: Cash River Exploration, Inc.

Bidder	Cash Payment	Price / Acre	Rental	Oil	Gas	Other

230

Bik. 16

Bik. 9

SL 16633

SL 16172

Bik. 10

St. Bernard Parish
Plaquemines Parish

SL 16683

TR 34879
2,497.27 ± ACS.
SEPT., 2002

SL 16894

Bik. 17

Bik. 15

P. O. B.
X=2,620,600.00
Y= 344,455.00

Bik. 16

GULF OF MEXICO

SL 16895

MAIN PASS AREA, REVISED
BRETON SOUND AREA

NAD 27
LAMBERT LA. SOUTH ZONE

Plaquemines Parish, Louisiana

3000' 0' 3000'

TRACT 34880 - Portion of Block 17, Breton Sound Area, Plaquemines Parish, Louisiana

All of the lands now or formerly constituting the beds and bottoms of all water bodies of every nature and description, and all islands and other lands formed by accretion, where allowed by law, or by reliction, and excepting tax adjudicated lands, belonging to the State of Louisiana and not presently under mineral lease on September 11, 2002, situated in Plaquemines Parish, Louisiana, and more particularly described as follows: Beginning at a point on the East line of Block 17, Breton Sound Area, having Coordinates of X = 2,650,100.00 and Y = 344,455.00; thence West 9,954.51 feet to the most Southerly Southeast corner of State Lease No. 16894; also being the Northeast corner of State Lease No. 16895 having Coordinates of X = 2,640,145.49 and Y = 344,455.00; thence on the boundary of said State Lease No. 16894 the following courses: North 07 degrees 08 minutes 14 seconds East 3,537.41 feet, South 88 degrees 47 minutes 25 seconds East 5,921.32 feet and North 29 degrees 41 minutes 27 seconds West 4,593.01 feet to the most Northerly Northeast corner of said State Lease No. 16894, also being a point on the North line of said Block 17 having Coordinates of X = 2,644,230.00 and Y = 351,830.00; thence East 5,870.00 feet on the North line of said Block 17 to its Northeast corner having Coordinates of X = 2,650,100.00 and Y = 351,830.00; thence South 7,375.00 feet on the East line of said Block 17 to the point of beginning, containing approximately **1,199.09 acres**, all as more particularly outlined on a plat on file in the Office of Mineral Resources, Department of Natural Resources, as provided by the applicant. All bearings, distances and coordinates are based on Louisiana Coordinate System of 1927, (North or South Zone), where applicable.

NOTE: The above description of the Tract nominated for lease has been provided and corrected, where required, exclusively by the nomination party. Any mineral lease selected from this Tract and awarded by the Louisiana State Mineral Board shall be without warranty of any kind, either express, implied, or statutory, including, but not limited to, the implied warranties of merchantability and fitness for a particular purpose. Should the mineral lease awarded by the Louisiana State Mineral Board be subsequently modified, cancelled or abrogated due to the existence of conflicting leases, operating agreements, private claims or other future obligations or conditions which may affect all or any portion of the leased Tract, it shall not relieve the Lessee of the obligation to pay any bonus due thereon to the Louisiana State Mineral Board, nor shall the Louisiana State Mineral Board be obligated to refund any consideration paid by the Lessor prior to such modification, cancellation, or abrogation, including, but not limited to, bonuses, rentals and royalties.

NOTE: It appears, according to our records, that a portion of this Tract is located within the restrictive safety fairway area as set out by the Corps of Engineers, U.S. Army and/or the restrictive anchorage area as set out by the U.S. Coast Guard.

NOTE: The State of Louisiana does hereby reserve, and this lease shall be subject to, the imprescriptible right of surface use in the nature of a servitude in favor of the Department of Natural Resources, including its Offices and Commissions, for the sole purpose of implementing, constructing, servicing and maintaining approved coastal zone management and/or restoration projects. Utilization of any and all rights derived under this lease by the mineral lessee, its agents, successors or assigns, shall not interfere with nor hinder the reasonable surface use by the Department of Natural Resources, its Offices or Commissions, as herein above reserved.

Applicant: Cash River Exploration, Inc.

Bidder	Cash Payment	Price / Acre	Rental	Oil	Gas	Other

233

St. Bernard Parish
Plaquemines Parish

Bik. 16

Bik. 15

SL 17303

SL 16593

SL 16894

SL 16594

MAIN PASS AREA, REVISED
BRETON SOUND AREA

TR 34880
1,199.09 ± ACS.
SEPT., 2002

Bik. 18

P. O. B.
X=2,650,100.00
Y= 344,455.00

SL 16442

Bik. 17

SL 16895

GULF OF MEXICO

SL 16544

SL 17301

SL 1227, As Amended

Bik. 31

Bik. 32

NAD 27
LAMBERT LA. SOUTH ZONE

Plaquemines Parish, Louisiana



TRACT 34881 - Plaquemines Parish, Louisiana

All of the lands now or formerly constituting the beds and bottoms of all water bodies of every nature and description, and all islands and other lands formed by accretion, where allowed by law, or by reliction, and excepting tax adjudicated lands, belonging to the State of Louisiana and not presently under mineral lease on September 11, 2002, situated in Plaquemines Parish, Louisiana, and more particularly described as follows: Beginning at the Southeast corner of Block 14, Main Pass Area, Revised, having Coordinates of X = 2,605,850.00 and Y = 337,080.00; thence West 4,750.00 feet along the South line of said Block 14 to a point, also being the Southeast corner of State Lease No. 15529 having Coordinates of X = 2,601,100.00 and Y = 337,080.00; thence North 1,975.00 feet along the East line of said State Lease No. 15529 to a point, also being the Southwest corner of State Lease No. 16635 having Coordinates of X = 2,601,100.00 and Y = 339,055.00; thence East 4,750.00 feet along the South line of said State Lease No. 16635 to its Southeast corner, also being a point on the East line of said Block 14 having Coordinates of X = 2,605,850.00 and Y = 339,055.00; thence South 1,975.00 feet along the East line of said Block 14 to the point of beginning, containing approximately **215.36 acres**, all as more particularly outlined on a plat on file in the Office of Mineral Resources, Department of Natural Resources, as provided by the applicant. All bearings, distances and coordinates are based on Louisiana Coordinate System of 1927, (North or South Zone), where applicable.

NOTE: The above description of the Tract nominated for lease has been provided and corrected, where required, exclusively by the nomination party. Any mineral lease selected from this Tract and awarded by the Louisiana State Mineral Board shall be without warranty of any kind, either express, implied, or statutory, including, but not limited to, the implied warranties of merchantability and fitness for a particular purpose. Should the mineral lease awarded by the Louisiana State Mineral Board be subsequently modified, cancelled or abrogated due to the existence of conflicting leases, operating agreements, private claims or other future obligations or conditions which may affect all or any portion of the leased Tract, it shall not relieve the Lessee of the obligation to pay any bonus due thereon to the Louisiana State Mineral Board, nor shall the Louisiana State Mineral Board be obligated to refund any consideration paid by the Lessor prior to such modification, cancellation, or abrogation, including, but not limited to, bonuses, rentals and royalties.

NOTE: The State of Louisiana does hereby reserve, and this lease shall be subject to, the imprescriptible right of surface use in the nature of a servitude in favor of the Department of Natural Resources, including its Offices and Commissions, for the sole purpose of implementing, constructing, servicing and maintaining approved coastal zone management and/or restoration projects. Utilization of any and all rights derived under this lease by the mineral lessee, its agents, successors or assigns, shall not interfere with nor hinder the reasonable surface use by the Department of Natural Resources, its Offices or Commissions, as herein above reserved.

Applicant: Cash River Exploration, Inc.

Bidder	Cash Payment	Price / Acre	Rental	Oil	Gas	Other

SL 16733

SL 16390

236
SL 16683

SL 16174

SL 16634

SL 16389

SL 16407

BIK. 14

SL 16391

SL 16408

BIK. 15

SL 15529

SL 16635

MAIN PASS AREA, REVISED

SL 16684

P. O. B.
X=2,605,850.00
Y= 337,080.00

TR 34881
215.36 ± ACS.
SEPT., 2002

SL 16687

SL 16689

SL 16685

BIK. 23

BIK. 22

GULF OF MEXICO

SL 16430

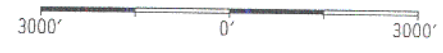
SL 16591

SL 16686

SL 16688

NAD 27 LAMBERT LA. SOUTH ZONE

Plaquemines Parish, Louisiana



TRACT 34882 - Portion of Block 15, Main Pass Area, Revised, Plaquemines Parish, Louisiana

All of the lands now or formerly constituting the beds and bottoms of all water bodies of every nature and description, and all islands and other lands formed by accretion, where allowed by law, or by reliction, and excepting tax adjudicated lands, belonging to the State of Louisiana and not presently under mineral lease on September 11, 2002, situated in Plaquemines Parish, Louisiana, and more particularly described as follows: Beginning at the Southeast corner of Block 15, Main Pass Area, Revised, having Coordinates of X = 2,620,600.00 and Y = 337,080.00; thence West 7,875.00 feet along the South line of said Block 15 to a point; also being the most Southerly Southeast corner of State Lease No. 16684 having Coordinates of X = 2,612,725.00 and Y = 337,080.00; thence along the boundary of said State Lease No. 16684 the following courses: North 1,370.00 feet, North 65 degrees 16 minutes 47 seconds West 2,917.34 feet and North 21 degrees 39 minutes 26 seconds West 3,319.31 feet, and West 3,000.00 feet to its Northwest corner, also being a point on the West line of said Block 15 having Coordinates of X = 2,605,850.00 and Y = 342,755.00; thence North 2,675.00 feet on the West line of said Block 15 to the Southwest corner of State Lease No. 16174 having Coordinates of X = 2,605,850.00 and Y = 345,430.00; thence along the boundary of said State Lease No. 16174 the following courses: East 4,400.00 feet and North 40 degrees 58 minutes 18 seconds East 1,769.46 feet to a point having Coordinates of X = 2,611,410.21 and Y = 346,766.00; thence East 9,189.79 feet to a point on the East line of said Block 15 having Coordinates of X = 2,620,600.00 and Y = 346,766.00; thence South 9,686.00 feet along the East line of said Block 15 to the point of beginning, containing approximately **2,499.56 acres**, all as more particularly outlined on a plat on file in the Office of Mineral Resources, Department of Natural Resources, as provided by the applicant. All bearings, distances and coordinates are based on Louisiana Coordinate System of 1927, (North or South Zone), where applicable.

NOTE: The above description of the Tract nominated for lease has been provided and corrected, where required, exclusively by the nomination party. Any mineral lease selected from this Tract and awarded by the Louisiana State Mineral Board shall be without warranty of any kind, either express, implied, or statutory, including, but not limited to, the implied warranties of merchantability and fitness for a particular purpose. Should the mineral lease awarded by the Louisiana State Mineral Board be subsequently modified, cancelled or abrogated due to the existence of conflicting leases, operating agreements, private claims or other future obligations or conditions which may affect all or any portion of the leased Tract, it shall not relieve the Lessee of the obligation to pay any bonus due thereon to the Louisiana State Mineral Board, nor shall the Louisiana State Mineral Board be obligated to refund any consideration paid by the Lessor prior to such modification, cancellation, or abrogation, including, but not limited to, bonuses, rentals and royalties.

NOTE: The State of Louisiana does hereby reserve, and this lease shall be subject to, the imprescriptible right of surface use in the nature of a servitude in favor of the Department of Natural Resources, including its Offices and Commissions, for the sole purpose of implementing, constructing, servicing and maintaining approved coastal zone management and/or restoration projects. Utilization of any and all rights derived under this lease by the mineral lessee, its agents, successors or assigns, shall not interfere with nor hinder the reasonable surface use by the Department of Natural Resources, its Offices or Commissions, as herein above reserved.

Applicant: Cash River Exploration, Inc.

Bidder	Cash Payment	Price / Acre	Rental	Oil	Gas	Other

SL 16730

BIK. 10

SL 16172

239
BIK. 9

MAIN PASS AREA, REVISED

SL 16390

SL 16683

SL 16174

BIK. 15

SL 16407

SL 16408

BIK. 16

TR 34882
2,499.56 ± ACS.
SEPT., 2002

SL 16635

SL 16684

P. O. B.
X=2,620,600.00
Y= 337,080.00

BIK. 22

BIK. 21

SL 16689

GULF OF MEXICO

SL 17247

SL 16430

NAD 27
LAMBERT LA. SOUTH ZONE

Plaquemines Parish, Louisiana

3000' 0' 3000'

TRACT 34883 - Portion of Block 16, Main Pass Area, Revised, Plaquemines Parish, Louisiana

All of the lands now or formerly constituting the beds and bottoms of all water bodies of every nature and description, and all islands and other lands formed by accretion, where allowed by law, or by reliction, and excepting tax adjudicated lands, belonging to the State of Louisiana and not presently under mineral lease on September 11, 2002, situated in Plaquemines Parish, Louisiana, and more particularly described as follows: Beginning at a point on the West line of Block 16, Main Pass Area, Revised, having Coordinates of X = 2,620,600.00 and Y = 344,455.00; thence East 14,750.00 feet to a point on the East line of said Block 16 having Coordinates of X = 2,635,350.00 and Y = 344,455.00; thence South 7,375.00 feet along the East line of said Block 16 to its Southeast corner having Coordinates of X = 2,635,350.00 and Y = 337,080.00; thence West 14,750.00 feet along the South line of said Block 16 to its Southwest corner having Coordinates of X = 2,620,600.00 and Y = 337,080.00; thence North 7,375.00 feet along the West line of said Block 16 to the point of beginning, containing approximately **2,497.27 acres**, all as more particularly outlined on a plat on file in the Office of Mineral Resources, Department of Natural Resources, as provided by the applicant. All bearings, distances and coordinates are based on Louisiana Coordinate System of 1927, (North or South Zone), where applicable.

NOTE: The above description of the Tract nominated for lease has been provided and corrected, where required, exclusively by the nomination party. Any mineral lease selected from this Tract and awarded by the Louisiana State Mineral Board shall be without warranty of any kind, either express, implied, or statutory, including, but not limited to, the implied warranties of merchantability and fitness for a particular purpose. Should the mineral lease awarded by the Louisiana State Mineral Board be subsequently modified, cancelled or abrogated due to the existence of conflicting leases, operating agreements, private claims or other future obligations or conditions which may affect all or any portion of the leased Tract, it shall not relieve the Lessee of the obligation to pay any bonus due thereon to the Louisiana State Mineral Board, nor shall the Louisiana State Mineral Board be obligated to refund any consideration paid by the Lessor prior to such modification, cancellation, or abrogation, including, but not limited to, bonuses, rentals and royalties.

NOTE: The State of Louisiana does hereby reserve, and this lease shall be subject to, the imprescriptible right of surface use in the nature of a servitude in favor of the Department of Natural Resources, including its Offices and Commissions, for the sole purpose of implementing, constructing, servicing and maintaining approved coastal zone management and/or restoration projects. Utilization of any and all rights derived under this lease by the mineral lessee, its agents, successors or assigns, shall not interfere with nor hinder the reasonable surface use by the Department of Natural Resources, its Offices or Commissions, as herein above reserved.

Applicant: Cash River Exploration, Inc.

Bidder	Cash Payment	Price / Acre	Rental	Oil	Gas	Other

SL 16683

GULF OF MEXICO

242

SL 16894

Bik. 16

MAIN PASS AREA, REVISED
BRETON SOUND AREA

P. O. B.
X=2,620,600.00
Y= 344,455.00

Bik. 15

TR 34883
2,497.27 ± ACS.
SEPT., 2002

Bik. 17

SL 16895

Bik. 22

SL 17301

Bik. 21

Bik. 32

SL 17247

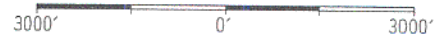
SL 4708
As Amended

SL 1227
As Amended

SL 15536

NAD 27
— LAMBERT LA. SOUTH ZONE

Plaquemines Parish, Louisiana



TRACT 34884 - Portion of Block 17, Breton Sound Area, Plaquemines Parish, Louisiana

All of the lands now or formerly constituting the beds and bottoms of all water bodies of every nature and description, and all islands and other lands formed by accretion, where allowed by law, or by reliction, and excepting tax adjudicated lands, belonging to the State of Louisiana and not presently under mineral lease on September 11, 2002, situated in Plaquemines Parish, Louisiana, and more particularly described as follows: Beginning at a point on the East line of Block 17, Breton Sound Area, having Coordinates of X = 2,650,100.00 and Y = 344,455.00; thence South 7,375.00 feet on the East line of said Block 17 to its Southeast corner having Coordinates of X = 2,650,100.00 and Y = 337,080.00; thence West 4,230.00 feet on the South line of said Block 17 to a point, also being the most Southerly Southeast corner of State Lease No. 16895 having Coordinates of X = 2,645,870.00 and Y = 337,080.00; thence on said State Lease No. 16895 the following courses: North 01 degrees 58 minutes 14 seconds East 2,181.29 feet, West 6,450.00 feet and North 07 degrees 08 minutes 14 seconds East 5,235.57 feet to the Northeast corner of said State Lease No. 16895; also being the most Southerly Southeast corner of State Lease No. 16894 having Coordinates of X = 2,640,145.49 and Y = 344,455.00; thence East 9,954.51 feet to the point of beginning, containing approximately **1,435.79 acres**, all as more particularly outlined on a plat on file in the Office of Mineral Resources, Department of Natural Resources, as provided by the applicant. All bearings, distances and coordinates are based on Louisiana Coordinate System of 1927, (North or South Zone), where applicable.

NOTE: The above description of the Tract nominated for lease has been provided and corrected, where required, exclusively by the nomination party. Any mineral lease selected from this Tract and awarded by the Louisiana State Mineral Board shall be without warranty of any kind, either express, implied, or statutory, including, but not limited to, the implied warranties of merchantability and fitness for a particular purpose. Should the mineral lease awarded by the Louisiana State Mineral Board be subsequently modified, cancelled or abrogated due to the existence of conflicting leases, operating agreements, private claims or other future obligations or conditions which may affect all or any portion of the leased Tract, it shall not relieve the Lessee of the obligation to pay any bonus due thereon to the Louisiana State Mineral Board, nor shall the Louisiana State Mineral Board be obligated to refund any consideration paid by the Lessor prior to such modification, cancellation, or abrogation, including, but not limited to, bonuses, rentals and royalties.

NOTE: It appears, according to our records, that a portion of this Tract is located within the restrictive safety fairway area as set out by the Corps of Engineers, U.S. Army and/or the restrictive anchorage area as set out by the U.S. Coast Guard.

NOTE: The State of Louisiana does hereby reserve, and this lease shall be subject to, the imprescriptible right of surface use in the nature of a

servitude in favor of the Department of Natural Resources, including its Offices and Commissions, for the sole purpose of implementing, constructing, servicing and maintaining approved coastal zone management and/or restoration projects. Utilization of any and all rights derived under this lease by the mineral lessee, its agents, successors or assigns, shall not interfere with nor hinder the reasonable surface use by the Department of Natural Resources, its Offices or Commissions, as herein above reserved.

Applicant: Cash River Exploration, Inc.

Bidder	Cash Payment	Price / Acre	Rental	Oil	Gas	Other

MAIN PASS AREA, REVISED

BRETON SOUND AREA

SL 16894

BIK. 17

245

SL 16594

GULF OF MEXICO

BIK. 18

P. O. B.
X=2,650,100.00
Y= 344,455.00

TR 34884
1,435.79 ± ACS.
SEPT., 2002

SL 16895

SL 16544

SL 17301

BIK. 32

BIK. 31

SL 1227, As Amended

SL 470B, As Amended

NAD 27 LAMBERT LA. SOUTH ZONE

Plaquemines Parish, Louisiana

3000' 0' 3000'

TRACT 34885 - Portion of Block 15, Main Pass Area, Revised, Plaquemines Parish, Louisiana

All of the lands now or formerly constituting the beds and bottoms of all water bodies of every nature and description, and all islands and other lands formed by accretion, where allowed by law, or by reliction, and excepting tax adjudicated lands, belonging to the State of Louisiana and not presently under mineral lease on September 11, 2002, situated in Plaquemines Parish, Louisiana, and more particularly described as follows: Beginning at the Southwest corner of Block 15, Main Pass Area, Revised, having Coordinates of X = 2,605,850.00 and Y = 337,080.00; thence North 4,425.00 feet along the West line of said Block 15 to a point, also being the most Northerly Southwest corner of State Lease No. 16684 having Coordinates of X = 2,605,850.00 and Y = 341,505.00; thence South 38 degrees 56 minutes 06 seconds East 5,688.69 feet along the Western boundary of said State Lease No. 16684 to its most Southerly Southwest corner, also being a point on the South line of said Block 15 having Coordinates of X = 2,609,425.00 and Y = 337,080.00; thence West 3,575.00 feet along the South line of said Block 15 to the point of beginning, containing approximately **181.58 acres**, all as more particularly outlined on a plat on file in the Office of Mineral Resources, Department of Natural Resources, as provided by the applicant. All bearings, distances and coordinates are based on Louisiana Coordinate System of 1927, (North or South Zone), where applicable.

NOTE: The above description of the Tract nominated for lease has been provided and corrected, where required, exclusively by the nomination party. Any mineral lease selected from this Tract and awarded by the Louisiana State Mineral Board shall be without warranty of any kind, either express, implied, or statutory, including, but not limited to, the implied warranties of merchantability and fitness for a particular purpose. Should the mineral lease awarded by the Louisiana State Mineral Board be subsequently modified, cancelled or abrogated due to the existence of conflicting leases, operating agreements, private claims or other future obligations or conditions which may affect all or any portion of the leased Tract, it shall not relieve the Lessee of the obligation to pay any bonus due thereon to the Louisiana State Mineral Board, nor shall the Louisiana State Mineral Board be obligated to refund any consideration paid by the Lessor prior to such modification, cancellation, or abrogation, including, but not limited to, bonuses, rentals and royalties.

NOTE: The State of Louisiana does hereby reserve, and this lease shall be subject to, the imprescriptible right of surface use in the nature of a servitude in favor of the Department of Natural Resources, including its Offices and Commissions, for the sole purpose of implementing, constructing, servicing and maintaining approved coastal zone management and/or restoration projects. Utilization of any and all rights derived under this lease by the mineral lessee, its agents, successors or assigns, shall not interfere with nor hinder the reasonable surface use by the Department of Natural Resources, its Offices or Commissions, as herein above reserved.

Applicant: Cash River Exploration, Inc.

Bidder	Cash Payment	Price / Acre	Rental	Oil	Gas	Other

248

SL 16683

SL 16390

SL 16174

SL 16634

BIK. 14

SL 16407

BIK. 15

SL 16408

MAIN PASS AREA, REVISED

SL 15529

SL 16391

SL 16635

TR 34885
181.58 ± ACS.
SEPT., 2002

SL 16684

P. O. B.
X=2,605,850.00
Y= 337,080.00

SL 16687

GULF OF MEXICO

SL 16689

SL 16685

BIK. 22

BIK. 23

SL 16430

SL 16431

SL 16591

SL 16686

SL 16688

NAD 27 LAMBERT LA. SOUTH ZONE

Plaquemines Parish, Louisiana

