

**TRACT 34856 - St. Charles Parish, Louisiana**

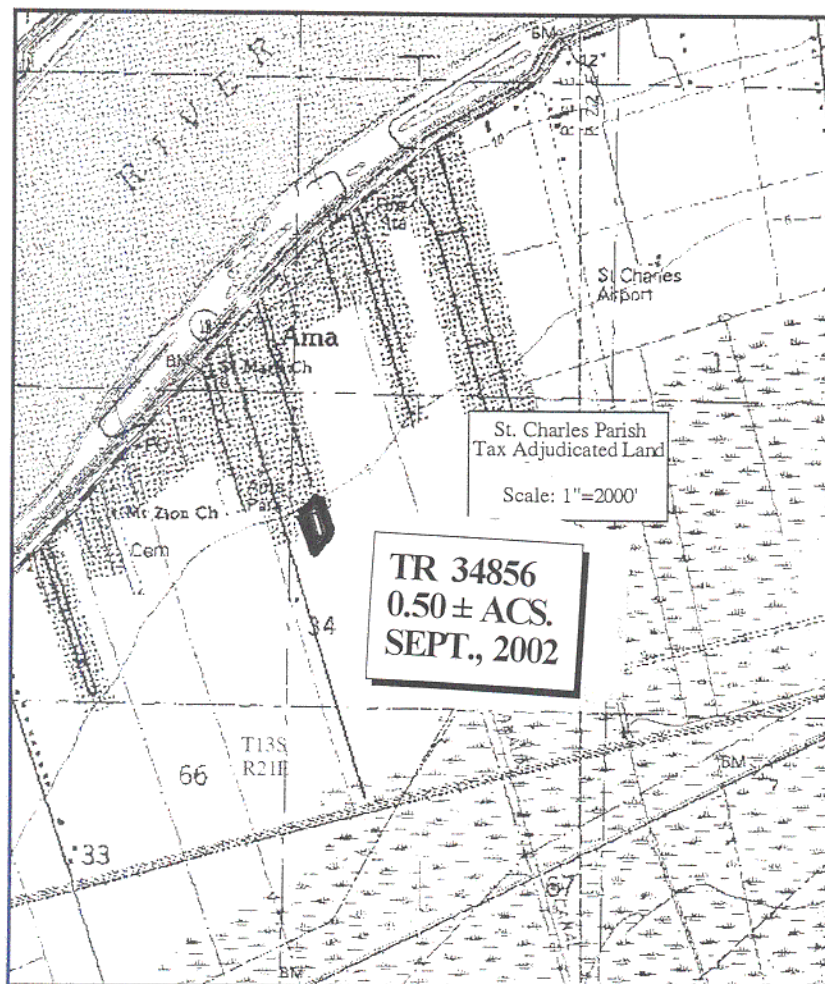
All of the land adjudicated to and acquired by the State of Louisiana in and through a proper tax sale, including surface and mineral rights, owned by and not already under valid mineral lease from the State of Louisiana on September 11, 2002, situated in St. Charles Parish, Louisiana, and being more fully described as follows: A lot measuring 300 feet by 1/4 arpent, being 0.5 acres, more or less, situated in Section 34, Township 13 South, Range 21 East, St. Charles Parish, Louisiana, and adjudicated to the State of Louisiana for a 1931 assessment in the name of Estate of Robert Smith, in accordance with adjudication to the State of Louisiana, recorded February 4, 1933 in the conveyance records of St. Charles Parish, Louisiana, containing approximately **0.50 acres**, all as more particularly outlined on a plat on file in the Office of Mineral Resources, Department of Natural Resources, as provided by the applicant. All bearings, distances and coordinates are based on Louisiana Coordinate System of 1927, (North or South Zone), where applicable.

NOTE: The above description of the Tract nominated for lease has been provided and corrected, where required, exclusively by the nomination party. Any mineral lease selected from this Tract and awarded by the Louisiana State Mineral Board shall be without warranty of any kind, either express, implied, or statutory, including, but not limited to, the implied warranties of merchantability and fitness for a particular purpose. Should the mineral lease awarded by the Louisiana State Mineral Board be subsequently modified, cancelled or abrogated due to the existence of conflicting leases, operating agreements, private claims or other future obligations or conditions which may affect all or any portion of the leased Tract, it shall not relieve the Lessee of the obligation to pay any bonus due thereon to the Louisiana State Mineral Board, nor shall the Louisiana State Mineral Board be obligated to refund any consideration paid by the Lessor prior to such modification, cancellation, or abrogation, including, but not limited to, bonuses, rentals and royalties.

NOTE: The State of Louisiana does hereby reserve, and this lease shall be subject to, the imprescriptible right of surface use in the nature of a servitude in favor of the Department of Natural Resources, including its Offices and Commissions, for the sole purpose of implementing, constructing, servicing and maintaining approved coastal zone management and/or restoration projects. Utilization of any and all rights derived under this lease by the mineral lessee, its agents, successors or assigns, shall not interfere with nor hinder the reasonable surface use by the Department of Natural Resources, its Offices or Commissions, as herein above reserved.

Applicant: EKG Services, Inc.

Bidder	Cash Payment	Price / Acre	Rental	Oil	Gas	Other



**TRACT 34857 - St. Charles Parish, Louisiana**

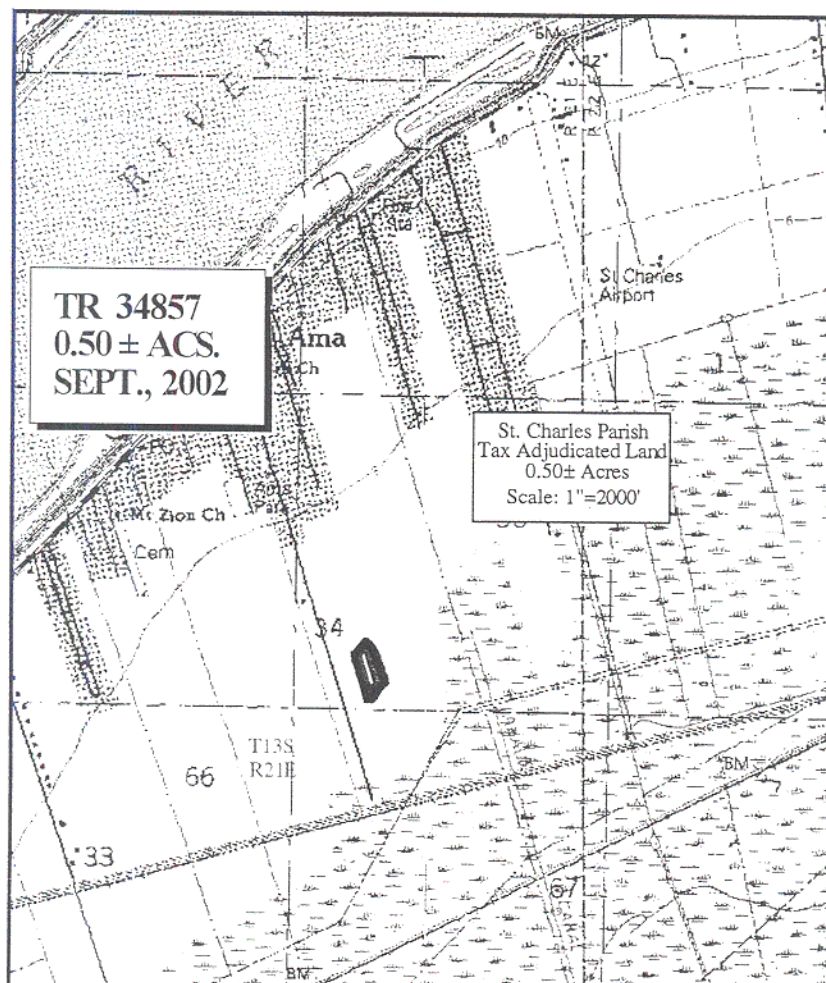
All of the land adjudicated to and acquired by the State of Louisiana in and through a proper tax sale, including surface and mineral rights, owned by and not already under valid mineral lease from the State of Louisiana on September 11, 2002, situated in St. Charles Parish, Louisiana, and being more fully described as follows: A lot measuring  $\frac{1}{4}$  arpent front by 342 feet, being 0.5 acres, more or less, situated in Section 34, Township 13 South, Range 21 East, St. Charles Parish, Louisiana, and adjudicated to the State of Louisiana for a 1932 assessment in the name of Septime Johnson, in accordance with adjudication to the State of Louisiana, recorded January 15, 1934 in the conveyance records of St. Charles Parish, Louisiana, containing approximately **0.50 acres**, all as more particularly outlined on a plat on file in the Office of Mineral Resources, Department of Natural Resources, as provided by the applicant. All bearings, distances and coordinates are based on Louisiana Coordinate System of 1927, (North or South Zone), where applicable.

NOTE: The above description of the Tract nominated for lease has been provided and corrected, where required, exclusively by the nomination party. Any mineral lease selected from this Tract and awarded by the Louisiana State Mineral Board shall be without warranty of any kind, either express, implied, or statutory, including, but not limited to, the implied warranties of merchantability and fitness for a particular purpose. Should the mineral lease awarded by the Louisiana State Mineral Board be subsequently modified, cancelled or abrogated due to the existence of conflicting leases, operating agreements, private claims or other future obligations or conditions which may affect all or any portion of the leased Tract, it shall not relieve the Lessee of the obligation to pay any bonus due thereon to the Louisiana State Mineral Board, nor shall the Louisiana State Mineral Board be obligated to refund any consideration paid by the Lessor prior to such modification, cancellation, or abrogation, including, but not limited to, bonuses, rentals and royalties.

NOTE: The State of Louisiana does hereby reserve, and this lease shall be subject to, the imprescriptible right of surface use in the nature of a servitude in favor of the Department of Natural Resources, including its Offices and Commissions, for the sole purpose of implementing, constructing, servicing and maintaining approved coastal zone management and/or restoration projects. Utilization of any and all rights derived under this lease by the mineral lessee, its agents, successors or assigns, shall not interfere with nor hinder the reasonable surface use by the Department of Natural Resources, its Offices or Commissions, as herein above reserved.

Applicant: EKG Services, Inc.

Bidder	Cash Payment	Price / Acre	Rental	Oil	Gas	Other



**TRACT 34858 - St. Charles Parish, Louisiana**

All of the land adjudicated to and acquired by the State of Louisiana in and through a proper tax sale, including surface and mineral rights, owned by and not already under valid mineral lease from the State of Louisiana on September 11, 2002, situated in St. Charles Parish, Louisiana, and being more fully described as follows: A lot measuring 192 feet on a lane situated on the lower side of said lot by one quarter arpent in depth, more or less, save and except from said quarter of an arpent twelve feet comprising said lane reserved by Vendor for the common use of purchasers of other lots sold by him. Which lot presently sold is bounded above by the property of Haydel and Williams and below by that of Louis Thomas, in the rear by the right of way of the Morgan's Louisiana and Texas Railroad and Steamship Company and in the front by that of the present vendor, Joseph Alexander, being 0.25 acres, more or less, situated in Section 34, Township 13 South, Range 21 East, St. Charles Parish, Louisiana, and adjudicated to the State of Louisiana for a 1914 assessment in the name W. E. Robert, in accordance with adjudication to the State of Louisiana, recorded August 2, 1915 in the conveyance records of St. Charles Parish, Louisiana, containing approximately **0.25 acres**, all as more particularly outlined on a plat on file in the Office of Mineral Resources, Department of Natural Resources, as provided by the applicant. All bearings, distances and coordinates are based on Louisiana Coordinate System of 1927, (North or South Zone), where applicable.

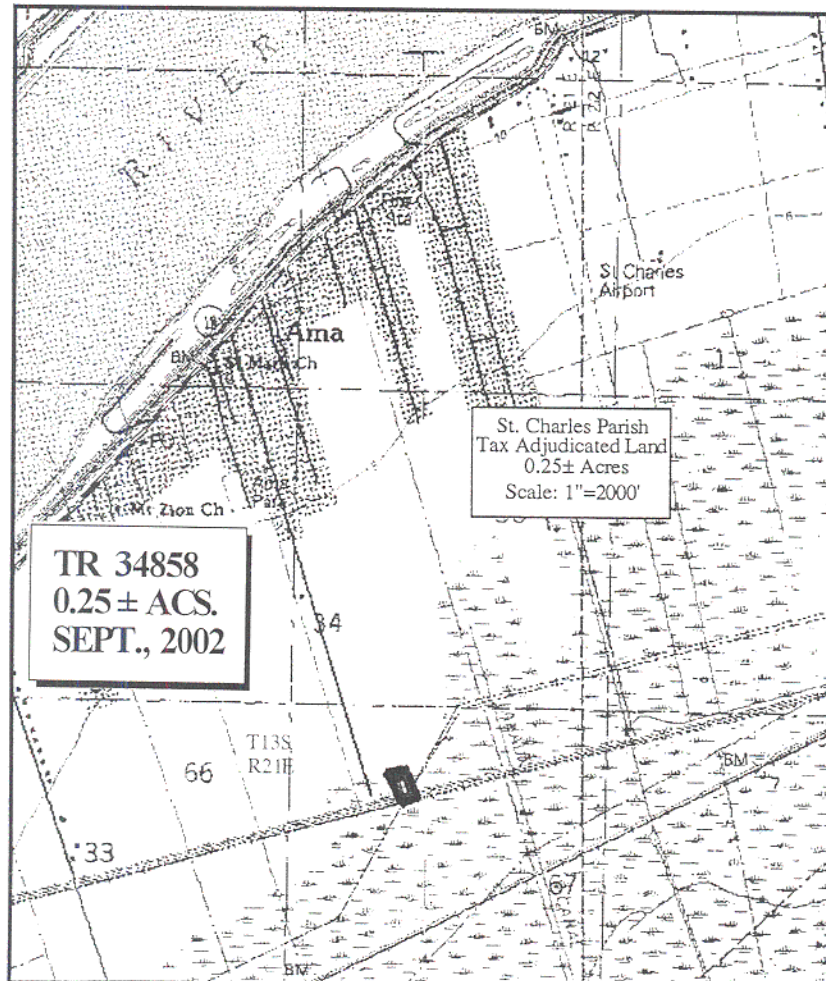
NOTE: The above description of the Tract nominated for lease has been provided and corrected, where required, exclusively by the nomination party. Any mineral lease selected from this Tract and awarded by the Louisiana State Mineral Board shall be without warranty of any kind, either express, implied, or statutory, including, but not limited to, the implied warranties of merchantability and fitness for a particular purpose. Should the mineral lease awarded by the Louisiana State Mineral Board be subsequently modified, cancelled or abrogated due to the existence of conflicting leases, operating agreements, private claims or other future obligations or conditions which may affect all or any portion of the leased Tract, it shall not relieve the Lessee of the obligation to pay any bonus due thereon to the Louisiana State Mineral Board, nor shall the Louisiana State Mineral Board be obligated to refund any consideration paid by the Lessor prior to such modification, cancellation, or abrogation, including, but not limited to, bonuses, rentals and royalties.

NOTE: The State of Louisiana does hereby reserve, and this lease shall be subject to, the imprescriptible right of surface use in the nature of a servitude in favor of the Department of Natural Resources, including its Offices and Commissions, for the sole purpose of implementing, constructing, servicing and maintaining approved coastal zone management and/or restoration projects. Utilization of any and all rights derived under this lease by the mineral lessee, its agents, successors or assigns, shall not interfere with nor hinder the reasonable surface use by the Department of Natural Resources, its Offices or Commissions, as herein above reserved.

Applicant: EKG Services, Inc.

Bidder	Cash Payment	Price / Acre	Rental	Oil	Gas	Other





**TRACT 34859 - Jefferson Parish, Louisiana**

All of the lands now or formerly constituting the beds and bottoms of all water bodies of every nature and description, and all islands and other lands formed by accretion, where allowed by law, or by reliction, and excepting tax adjudicated lands, belonging to the State of Louisiana and not presently under mineral lease on September 11, 2002, situated in Jefferson Parish, Louisiana, and more particularly described as follows: Beginning at a point having Coordinates of X = 2,370,140.35 and Y = 451,433.21 thence East 5,151.91 feet to a point having Coordinates of X = 2,375,292.26 and Y = 451,433.21; thence South 3,110.35 feet to a point having Coordinates of X = 2,375,292.26 and Y = 448,322.86; thence South 30 degrees 54 minutes 48.6 seconds West 5,516.76 feet to a point having Coordinates of X = 2,372,458.06 and Y = 443,589.79; thence West 2,317.71 feet to a point having Coordinates of X = 2,370,140.35 and Y = 443,589.79; thence North 7,843.42 feet to the point of beginning, **LESS AND EXCEPT**, if any, that portion of AO-0048 that may lie within the above described tract, containing approximately **33 acres**, all as more particularly outlined on a plat on file in the Office of Mineral Resources, Department of Natural Resources, as provided by the applicant. All bearings, distances and coordinates are based on Louisiana Coordinate System of 1927, (North or South Zone), where applicable.

NOTE: The above description of the Tract nominated for lease has been provided and corrected, where required, exclusively by the nomination party. Any mineral lease selected from this Tract and awarded by the Louisiana State Mineral Board shall be without warranty of any kind, either express, implied, or statutory, including, but not limited to, the implied warranties of merchantability and fitness for a particular purpose. Should the mineral lease awarded by the Louisiana State Mineral Board be subsequently modified, cancelled or abrogated due to the existence of conflicting leases, operating agreements, private claims or other future obligations or conditions which may affect all or any portion of the leased Tract, it shall not relieve the Lessee of the obligation to pay any bonus due thereon to the Louisiana State Mineral Board, nor shall the Louisiana State Mineral Board be obligated to refund any consideration paid by the Lessor prior to such modification, cancellation, or abrogation, including, but not limited to, bonuses, rentals and royalties.

NOTE: The State of Louisiana does hereby reserve, and this lease shall be subject to, the imprescriptible right of surface use in the nature of a servitude in favor of the Department of Natural Resources, including its Offices and Commissions, for the sole purpose of implementing, constructing, servicing and maintaining approved coastal zone management and/or restoration projects. Utilization of any and all rights derived under this lease by the mineral lessee, its agents, successors or assigns, shall not interfere with nor hinder the reasonable surface use by the Department of Natural Resources, its Offices or Commissions, as herein above reserved.

Applicant: Elizabeth Gilbert

Bidder	Cash Payment	Price / Acre	Rental	Oil	Gas	Other



**TRACT 34860 - Jefferson and St. Charles Parishes, Louisiana**

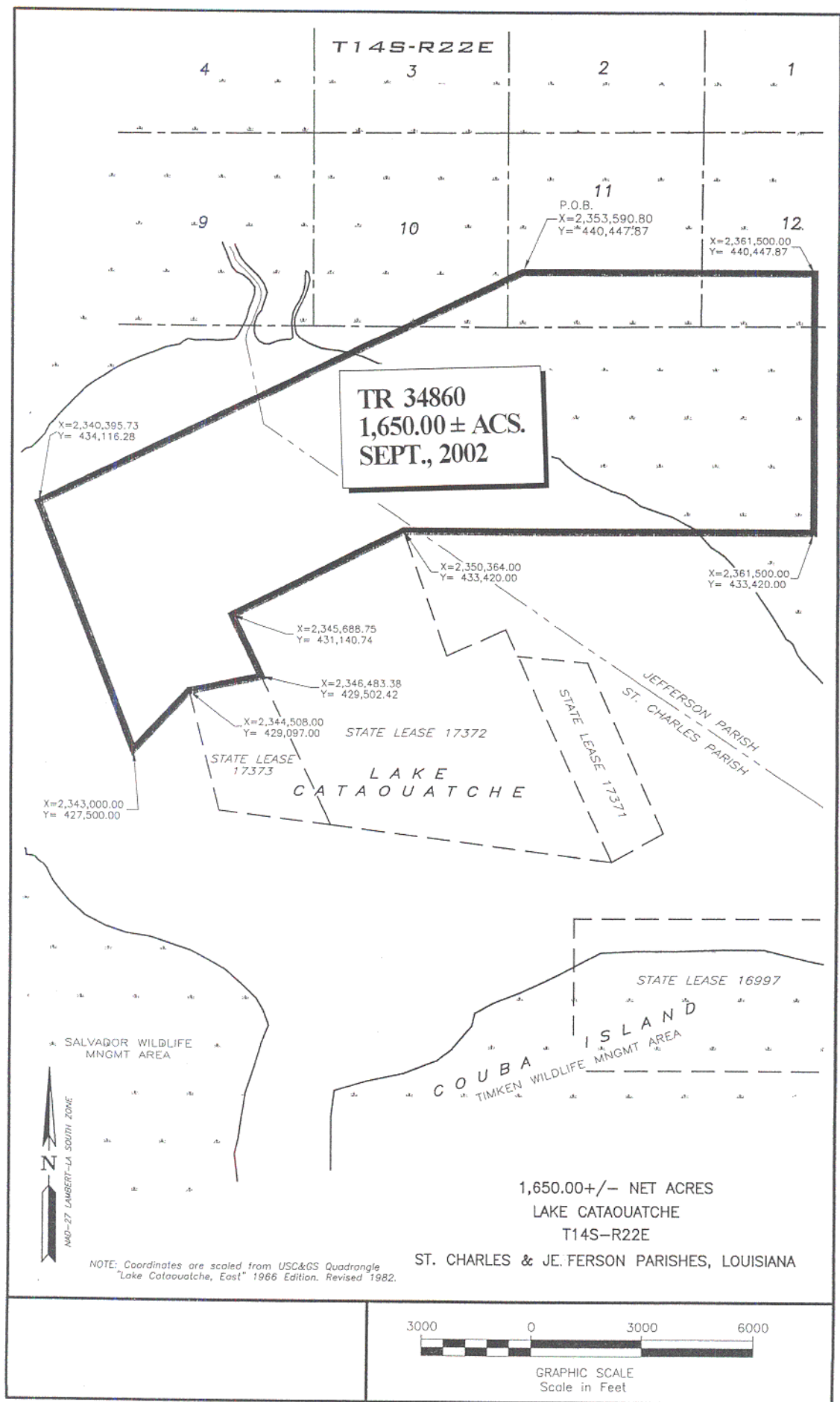
All of the lands now or formerly constituting the beds and bottoms of all water bodies of every nature and description, and all islands and other lands formed by accretion, where allowed by law, or by reliction, and excepting tax adjudicated lands, belonging to the State of Louisiana and not presently under mineral lease on September 11, 2002, situated in Jefferson and St. Charles Parishes, Louisiana, and more particularly described as follows: Beginning at a point having Coordinates of X = 2,353,590.80 and Y = 440,447.87; thence East 7,909.20 feet to a point having Coordinates of X = 2,361,500.00 and Y = 440,447.87; thence South 7,027.87 feet to a point having Coordinates of X = 2,361,500.00 and Y = 433,420.00; thence West 11,136.00 feet to a point having Coordinates of X = 2,350,364.00 and Y = 433,420.00, said point also being the most Northeast corner of State Lease No. 17372; thence South 64 degrees 00 minutes 36 seconds West 5,201.24 feet on the Northern boundary of State Lease No. 17372 to a point being the most Northwest corner of said State Lease No. 17372 and having Coordinates of X = 2,345,688.75 and Y = 431,140.74; thence South 25 degrees 52 minutes 29 seconds East 1,820.86 feet on the Western boundary of State Lease No. 17372 to a point being the most Northeast corner of State Lease No. 17373 and having Coordinates of X = 2,346,483.38 and Y = 429,502.42; thence South 78 degrees 24 minutes 07 seconds West 2,016.55 feet on the Northern boundary of State Lease No. 17373 to a point being the most Northwest corner of State Lease No. 17373 and having Coordinates of X = 2,344,508.00 and Y = 429,097.00; thence South 43 degrees 21 minutes 29 seconds West 2,196.47 feet to a point having Coordinates of X = 2,343,000.00 and Y = 427,500.00; thence North 21 degrees 29 minutes 07 seconds West 7,110.37 feet to a point having Coordinates of X = 2,340,395.73 and Y = 434,116.28; thence North 64 degrees 21 minutes 58 seconds East 14,635.54 feet to the point of beginning, containing approximately **1,650 acres**, all as more particularly outlined on a plat on file in the Office of Mineral Resources, Department of Natural Resources, as provided by the applicant. All bearings, distances and coordinates are based on Louisiana Coordinate System of 1927, (North or South Zone), where applicable.

NOTE: The above description of the Tract nominated for lease has been provided and corrected, where required, exclusively by the nomination party. Any mineral lease selected from this Tract and awarded by the Louisiana State Mineral Board shall be without warranty of any kind, either express, implied, or statutory, including, but not limited to, the implied warranties of merchantability and fitness for a particular purpose. Should the mineral lease awarded by the Louisiana State Mineral Board be subsequently modified, cancelled or abrogated due to the existence of conflicting leases, operating agreements, private claims or other future obligations or conditions which may affect all or any portion of the leased Tract, it shall not relieve the Lessee of the obligation to pay any bonus due thereon to the Louisiana State Mineral Board, nor shall the Louisiana State Mineral Board be obligated to refund any consideration paid by the Lessor prior to such modification, cancellation, or abrogation, including, but not limited to, bonuses, rentals and royalties.

NOTE: The State of Louisiana does hereby reserve, and this lease shall be subject to, the imprescriptible right of surface use in the nature of a servitude in favor of the Department of Natural Resources, including its Offices and Commissions, for the sole purpose of implementing, constructing, servicing and maintaining approved coastal zone management and/or restoration projects. Utilization of any and all rights derived under this lease by the mineral lessee, its agents, successors or assigns, shall not interfere with nor hinder the reasonable surface use by the Department of Natural Resources, its Offices or Commissions, as herein above reserved.

Applicant: Cash River Exploration, Inc.

Bidder	Cash Payment	Price / Acre	Rental	Oil	Gas	Other





**TRACT 34861 - Jefferson and St. Charles Parishes, Louisiana**

All of the lands now or formerly constituting the beds and bottoms of all water bodies of every nature and description, and all islands and other lands formed by accretion, where allowed by law, or by reliction, and excepting tax adjudicated lands, belonging to the State of Louisiana and not presently under mineral lease on September 11, 2002, situated in Jefferson and St. Charles Parishes, Louisiana, and more particularly described as follows: Beginning at a point having Coordinates of X = 2,350,364.00 and Y = 433,420.00; thence East for a distance of 17,736.00 feet to a point having Coordinates of X = 2,368,100.00 and Y = 433,420.00; thence South for a distance of 9,020.00 feet to a point having Coordinates of X = 2,368,100.00 and Y = 424,400.00, said point also being the most Northeast corner of State Lease No. 17106; thence West for a distance of 4,250.00 feet along the Northern boundary of State Lease No. 17106 to a point being the most Northwest corner of State Lease No. 17106 and having Coordinates of X = 2,363,850.00 and Y = 424,400.00; thence South for a distance of 1,324.00 feet along a Western boundary of said State Lease No. 17106 to a point located on the North boundary of State Lease No. 16997 and having Coordinates of X = 2,363,850.00 and Y = 423,076.00; thence West for a distance of 8,766.00 feet along the North boundary of said State Lease No. 16997 to a point being the most Northwest corner of said State Lease No. 16997 and having Coordinates of X = 2,355,084.00 and Y = 423,076.00; thence North for a distance of 1,633.25 feet to a point located on the Southern boundary of State Lease No. 17372 and having Coordinates of X = 2,355,084.00 and Y = 424,709.25; thence South 82 degrees 57 minutes 35 seconds East for a distance of 1,015.99 feet along the Southern boundary of State Lease No. 17372 to a point being the most Southeast corner of State Lease No. 17372 and having Coordinates of X = 2,356,092.33 and Y = 424,584.72; thence North 25 degrees 01 minutes 01 seconds West for a distance of 1.32 feet to a point being the most Southwest corner of State Lease No. 17371 and having Coordinates of X = 2,356,091.77 and Y = 424,585.92; thence North 61 degrees 18 minutes 36 seconds East for a distance of 1,579.10 feet to a point being the most Southeast corner of said State Lease No. 17371 and having Coordinates of X = 2,357,477.00 and Y = 425,344.00; thence North 24 degrees 10 minutes 39 seconds West for a distance of 5,002.85 feet to a point being the most Northeast corner of said State Lease No. 17371 and having Coordinates of X = 2,355,428.00 and Y = 429,908.00; thence North 84 degrees 56 minutes 21 seconds West for a distance of 1,936.73 feet to a point being the most Northwest corner of said State Lease No. 17371 and having Coordinates of X = 2,353,498.82 and Y = 430,078.85, said point also being located on the Eastern boundary of State Lease No. 17372; thence North 25 degrees 16 minutes 10 seconds West for a distance of 783.41 feet to a point and corner of said State Lease No. 17372 and having Coordinates of X = 2,353,164.40 and Y = 430,787.30; thence South 66 degrees 08 minutes 00 seconds West for a distance of 1,755.52 feet to a point and corner of said State Lease No. 17372 and having Coordinates of X = 2,351,559.00 and Y = 430,077.00; thence North 19 degrees 40 minutes 12 seconds West for a distance of 3,550.17 feet to the point of beginning, **LESS AND EXCEPT** all that portion of the Salvador/Timken Wildlife Management Area that lies



within the above described tract, containing approximately **1,890.00 acres**, all as more particularly outlined on a plat on file in the Office of Mineral Resources, Department of Natural Resources, as provided by the applicant. All bearings, distances and coordinates are based on Louisiana Coordinate System of 1927, (North or South Zone), where applicable.

NOTE: The above description of the Tract nominated for lease has been provided and corrected, where required, exclusively by the nomination party. Any mineral lease selected from this Tract and awarded by the Louisiana State Mineral Board shall be without warranty of any kind, either express, implied, or statutory, including, but not limited to, the implied warranties of merchantability and fitness for a particular purpose. Should the mineral lease awarded by the Louisiana State Mineral Board be subsequently modified, cancelled or abrogated due to the existence of conflicting leases, operating agreements, private claims or other future obligations or conditions which may affect all or any portion of the leased Tract, it shall not relieve the Lessee of the obligation to pay any bonus due thereon to the Louisiana State Mineral Board, nor shall the Louisiana State Mineral Board be obligated to refund any consideration paid by the Lessor prior to such modification, cancellation, or abrogation, including, but not limited to, bonuses, rentals and royalties.

NOTE: This Tract may be located within a Wildlife Management Area, Refuge, Game Preserve or other area under the management and jurisdiction of the Department of Wildlife and Fisheries. As such, any specific rules and regulations promulgated by said Department for the respective Wildlife Management Area, Refuges, Game Preserves or similar areas, as well as the following, may be, but are not necessarily, applicable to lease operations on this Tract:

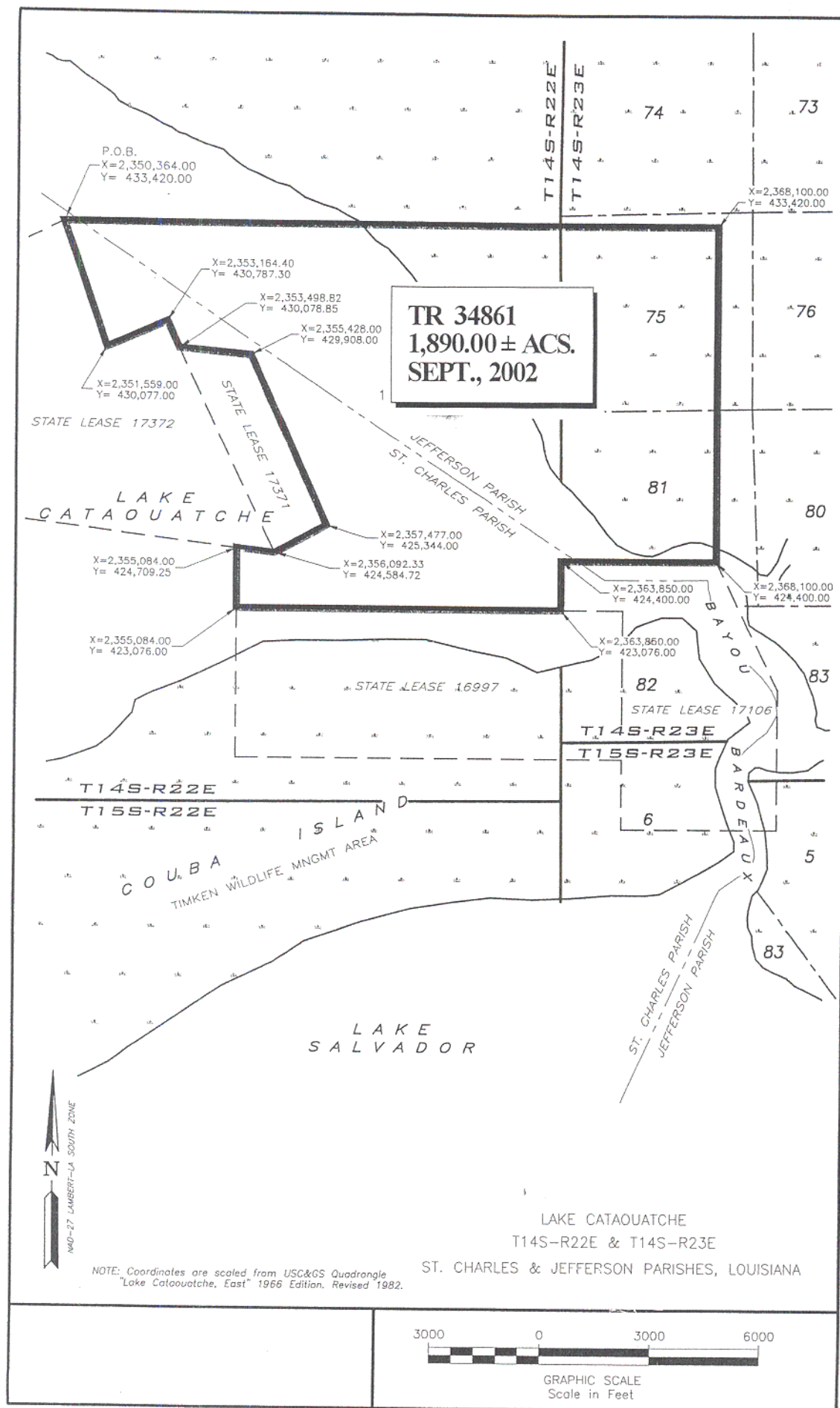
1. No activities will be allowed without written authorization from the Louisiana Department of Wildlife and Fisheries.
2. Projects will be evaluated on a case by case basis. Modifications to projects may be required including, but not limited to, access routes, spoil placement, well sites, flow lines and other appurtenant structures.
3. Mitigation will be required to offset avoidable wetland impacts.
4. Removal of all structures, facilities, and equipment will be required within 120 days of abandonment unless otherwise agreed to be the Department of Wildlife and Fisheries.
5. Prior to submitting applications for wetland permits to Federal and State permitting agencies the lease holder shall coordinate project details with the Louisiana Department of Wildlife and Fisheries, Fur and Refuge Division. Contact person for the Department will be Mike Windham at (504) 568-5886.

NOTE: The State of Louisiana does hereby reserve, and this lease shall be subject to, the imprescriptible right of surface use in the nature of a servitude in favor of the Department of Natural Resources, including its Offices and Commissions, for the sole purpose of implementing, constructing, servicing and maintaining approved coastal zone management and/or restoration projects. Utilization of any and all rights derived

under this lease by the mineral lessee, its agents, successors or assigns, shall not interfere with nor hinder the reasonable surface use by the Department of Natural Resources, its Offices or Commissions, as herein above reserved.

Applicant: Cash River Exploration, Inc.

Bidder	Cash Payment	Price / Acre	Rental	Oil	Gas	Other



**TRACT 34862 - Jefferson and St. Charles Parishes, Louisiana**

All of the lands now or formerly constituting the beds and bottoms of all water bodies of every nature and description, and all islands and other lands formed by accretion, where allowed by law, or by reliction, and excepting tax adjudicated lands, belonging to the State of Louisiana and not presently under mineral lease on September 11, 2002, situated in Jefferson and St. Charles Parishes, Louisiana, and more particularly described as follows: Beginning at a point having Coordinates of X = 2,378,000.00 and Y = 428,500.00; thence South for a distance of 17,000.00 feet to a point having Coordinates of X = 2,378,000.00 and Y = 411,500.00; thence West for a distance of 12,454.00 feet to a point having Coordinates of X = 2,365,546.00 and Y = 411,500.00; thence North for a distance of 5,600.00 to a point having Coordinates of X = 2,365,546.00 and Y = 417,100.00, said point being the most Southwest corner of State Lease No. 17106; thence East for a distance of 4,254.00 feet on the Southern boundary of State Lease No. 17106 to a point being the Southeast corner of State Lease No. 17106 and having Coordinates of X = 2,369,800.00 and Y = 417,100.00; thence North for a distance of 3,850.00 feet on the East boundary of State Lease No. 17106 to a point and corner of State Lease No. 17106 and having Coordinates of X = 2,369,800.00 and Y = 420,950.00; thence North 26 degrees 13 minutes 55 seconds West for a distance of 3,846.10 feet to a point being the most Northeast corner of State Lease No. 17106 and having Coordinates of X = 2,368,100.00 and Y = 424,400.00; thence North for a distance of 4,100.00 feet to a point having Coordinates of X = 2,368,100.00 and Y = 428,500.00; thence East for a distance of 9,900.00 feet to the point of beginning, **LESS AND EXCEPT** all that portion of the Salvador/Timken Wildlife Management Area that lies within the above described tract, containing approximately **600.00 acres**, all as more particularly outlined on a plat on file in the Office of Mineral Resources, Department of Natural Resources, as provided by the applicant. All bearings, distances and coordinates are based on Louisiana Coordinate System of 1927, (North or South Zone), where applicable.

NOTE: The above description of the Tract nominated for lease has been provided and corrected, where required, exclusively by the nomination party. Any mineral lease selected from this Tract and awarded by the Louisiana State Mineral Board shall be without warranty of any kind, either express, implied, or statutory, including, but not limited to, the implied warranties of merchantability and fitness for a particular purpose. Should the mineral lease awarded by the Louisiana State Mineral Board be subsequently modified, cancelled or abrogated due to the existence of conflicting leases, operating agreements, private claims or other future obligations or conditions which may affect all or any portion of the leased Tract, it shall not relieve the Lessee of the obligation to pay any bonus due thereon to the Louisiana State Mineral Board, nor shall the Louisiana State Mineral Board be obligated to refund any consideration paid by the Lessor prior to such modification, cancellation, or abrogation, including, but not limited to, bonuses, rentals and royalties.

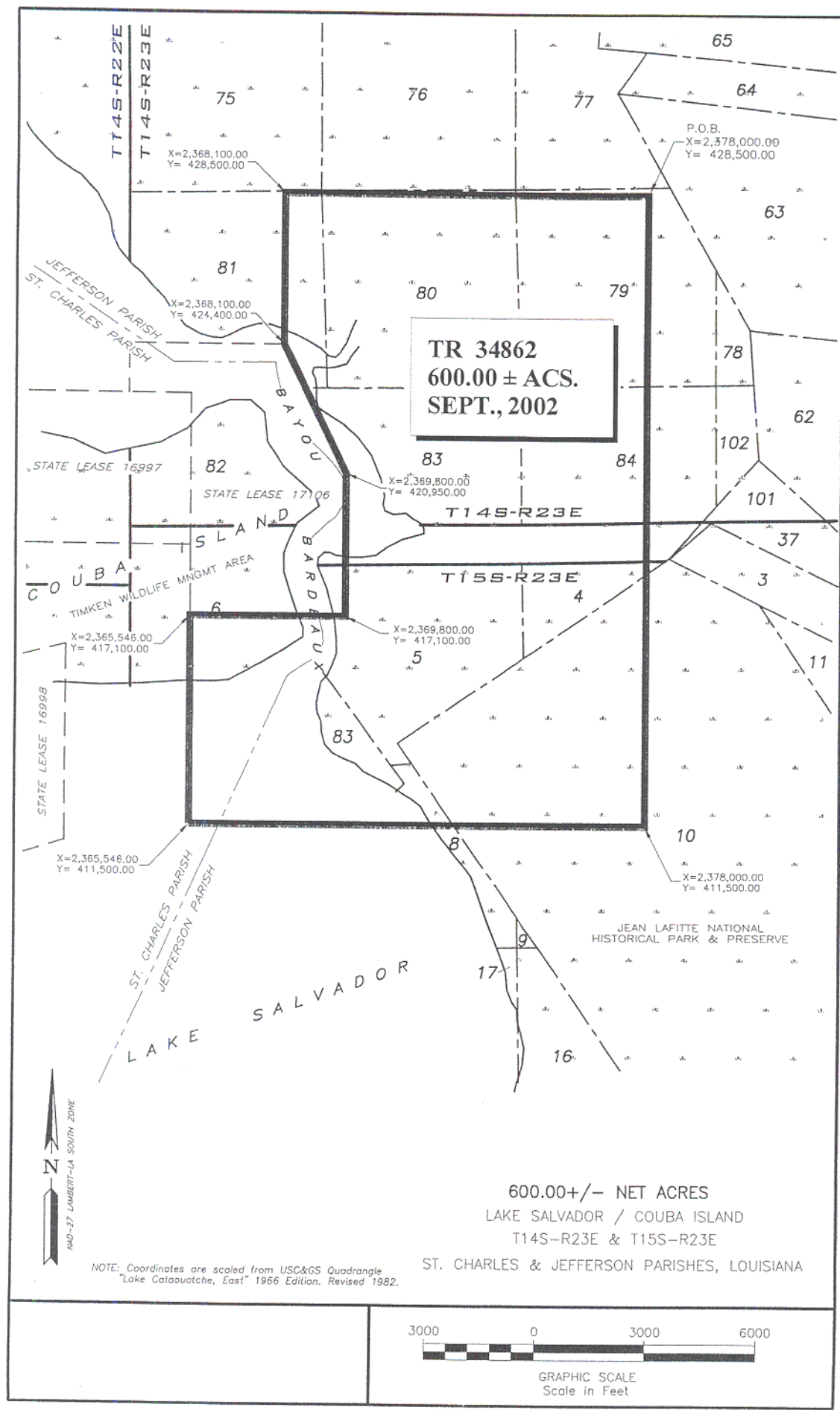
NOTE: This Tract may be located within a Wildlife Management Area, Refuge, Game Preserve or other area under the management and jurisdiction of the Department of Wildlife and Fisheries. As such, any specific rules and regulations promulgated by said Department for the respective Wildlife Management Area, Refuges, Game Preserves or similar areas, as well as the following, may be, but are not necessarily, applicable to lease operations on this Tract:

1. No activities will be allowed without written authorization from the Louisiana Department of Wildlife and Fisheries.
2. Projects will be evaluated on a case by case basis. Modifications to projects may be required including, but not limited to, access routes, spoil placement, well sites, flow lines and other appurtenant structures.
3. Mitigation will be required to offset avoidable wetland impacts.
4. Removal of all structures, facilities, and equipment will be required within 120 days of abandonment unless otherwise agreed to be the Department of Wildlife and Fisheries.
5. Prior to submitting applications for wetland permits to Federal and State permitting agencies the lease holder shall coordinate project details with the Louisiana Department of Wildlife and Fisheries, Fur and Refuge Division. Contact person for the Department will be Mike Windham at (504) 568-5886.

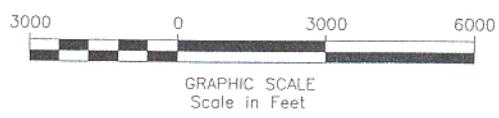
NOTE: The State of Louisiana does hereby reserve, and this lease shall be subject to, the imprescriptible right of surface use in the nature of a servitude in favor of the Department of Natural Resources, including its Offices and Commissions, for the sole purpose of implementing, constructing, servicing and maintaining approved coastal zone management and/or restoration projects. Utilization of any and all rights derived under this lease by the mineral lessee, its agents, successors or assigns, shall not interfere with nor hinder the reasonable surface use by the Department of Natural Resources, its Offices or Commissions, as herein above reserved.

Applicant: Cash River Exploration, Inc.

Bidder	Cash Payment	Price / Acre	Rental	Oil	Gas	Other



600.00+/- NET ACRES  
LAKE SALVADOR / COUBA ISLAND  
T14S-R23E & T15S-R23E  
ST. CHARLES & JEFFERSON PARISHES, LOUISIANA



**TRACT 34863 - Jefferson and Plaquemines Parishes, Louisiana**

All of the lands now or formerly constituting the beds and bottoms of all water bodies of every nature and description, and all islands and other lands formed by accretion, where allowed by law, or by reliction, and excepting tax adjudicated lands, belonging to the State of Louisiana and not presently under mineral lease on September 11, 2002, situated in Jefferson and Plaquemines Parishes, Louisiana, and more particularly described as follows: Beginning at a point on the West boundary of State Lease 17265 having Coordinates of X = 2,409,715.49 and Y = 414,900.00; thence South 25 degrees 07 minutes 30 seconds West 3,513.72 feet along the said West boundary of State Lease 17265 to its Southwest corner having Coordinates of X = 2,408,223.58 and Y = 411,718.74; thence South 80 degrees 18 minutes 55 seconds East 7,796.99 feet along the South boundary of said State Lease 17265 to a point having Coordinates of X = 2,415,909.45 and Y = 410,407.08; thence South 18 degrees 41 minutes 17 seconds West 3,367.97 feet to a point having Coordinates of X = 2,414,830.29 and Y = 407,216.68; thence South 15 degrees 47 minutes 56 seconds West 1,713.84 feet to a point having Coordinates of X = 2,414,363.68 and Y = 405,567.59; thence South 08 degrees 55 minutes 41 seconds West 555.42 feet to a point having Coordinates of X = 2,414,277.48 and Y = 405,018.90; thence North 76 degrees 02 minutes 40 seconds West 14,093.48 feet to a point having Coordinates of X = 2,400,600.00 and Y = 408,417.82; thence North 6,482.18 feet to a point having Coordinates of X = 2,400,600.00 and Y = 414,900.00; thence East 9,115.48 feet to the point of beginning, containing approximately **89 acres**, all as more particularly outlined on a plat on file in the Office of Mineral Resources, Department of Natural Resources, as provided by the applicant. All bearings, distances and coordinates are based on Louisiana Coordinate System of 1927, (North or South Zone), where applicable.

NOTE: The above description of the Tract nominated for lease has been provided and corrected, where required, exclusively by the nomination party. Any mineral lease selected from this Tract and awarded by the Louisiana State Mineral Board shall be without warranty of any kind, either express, implied, or statutory, including, but not limited to, the implied warranties of merchantability and fitness for a particular purpose. Should the mineral lease awarded by the Louisiana State Mineral Board be subsequently modified, cancelled or abrogated due to the existence of conflicting leases, operating agreements, private claims or other future obligations or conditions which may affect all or any portion of the leased Tract, it shall not relieve the Lessee of the obligation to pay any bonus due thereon to the Louisiana State Mineral Board, nor shall the Louisiana State Mineral Board be obligated to refund any consideration paid by the Lessor prior to such modification, cancellation, or abrogation, including, but not limited to, bonuses, rentals and royalties.

NOTE: The State of Louisiana does hereby reserve, and this lease shall be subject to, the imprescriptible right of surface use in the nature of a servitude in favor of the Department of Natural Resources, including its Offices and Commissions, for the sole purpose of implementing,

constructing, servicing and maintaining approved coastal zone management and/or restoration projects. Utilization of any and all rights derived under this lease by the mineral lessee, its agents, successors or assigns, shall not interfere with nor hinder the reasonable surface use by the Department of Natural Resources, its Offices or Commissions, as herein above reserved.

Applicant: E & E Exploration

Bidder	Cash Payment	Price / Acre	Rental	Oil	Gas	Other

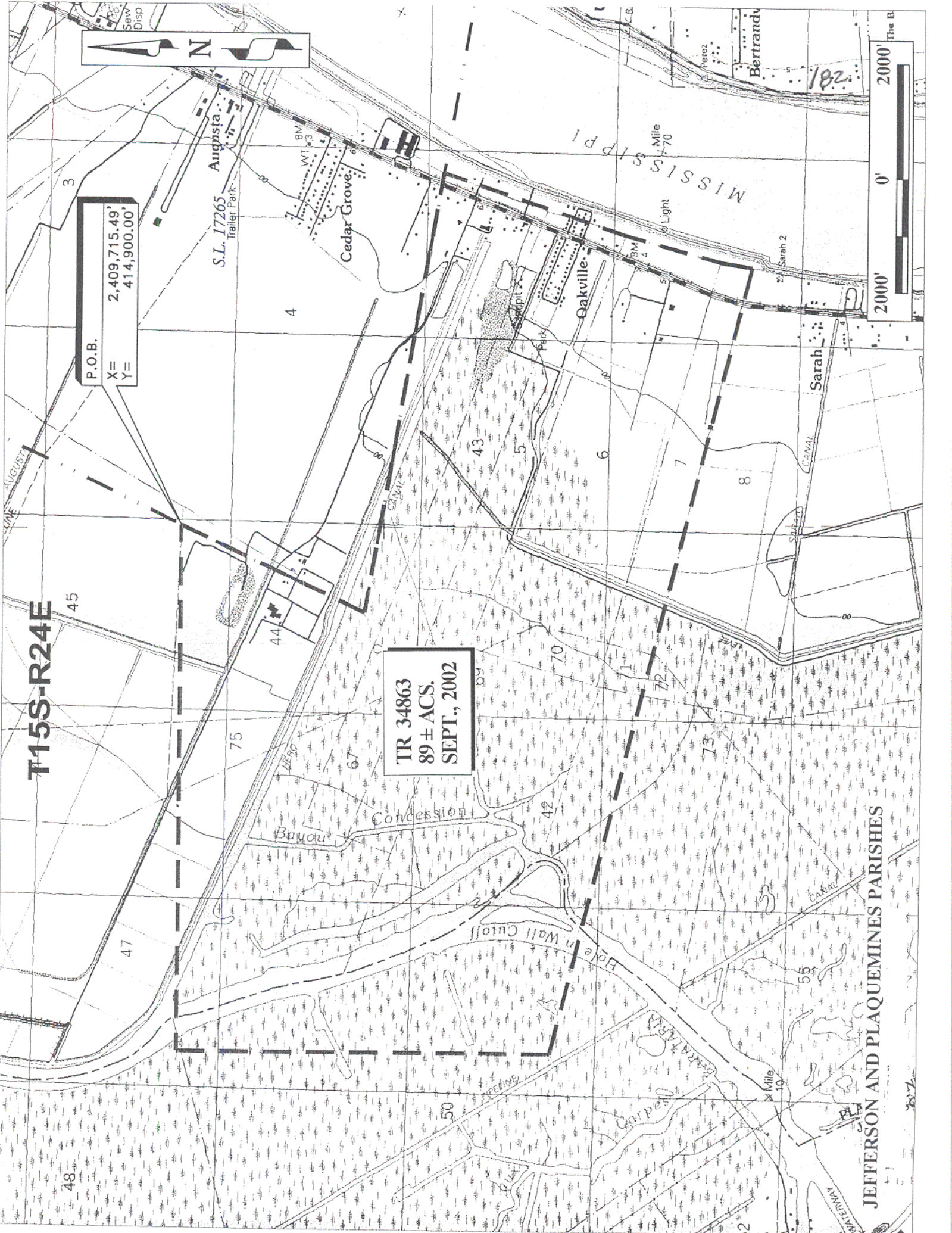


T15S-R24E

P.O.B.  
X= 2,409,715.49'  
Y= 414,900.00'

TR 34863  
89 ± ACS.  
SEPT., 2002

JEFFERSON AND PLAQUEMINES PARISHES



**TRACT 34864 - Jefferson and Plaquemines Parishes, Louisiana**

All of the lands now or formerly constituting the beds and bottoms of all water bodies of every nature and description, and all islands and other lands formed by accretion, where allowed by law, or by reliction, and excepting tax adjudicated lands, belonging to the State of Louisiana and not presently under mineral lease on September 11, 2002, situated in Jefferson and Plaquemines Parishes, Louisiana, and more particularly described as follows: Beginning at a point having Coordinates of X = 2,396,700.00 and Y = 396,500.00; thence North 12,887.00 feet to a point having Coordinates of X = 2,396,700.00 and Y = 409,386.99; thence South 76 degrees 02 minutes 40 seconds East 18,112.10 feet to a point having Coordinates of X = 2,414,277.48 and Y = 405,018.90; thence South 09 degrees 10 minutes 45 seconds West 2,880.98 feet to a point having Coordinates of X = 2,413,817.90 and Y = 402,174.81; thence South 05 degrees 48 minutes 55 seconds East 3,099.41 feet to a point having Coordinates of X = 2,414,131.93 and Y = 399,091.35; thence South 15 degrees 00 minutes 41 seconds East 2,682.91 feet to a point having Coordinates of X = 2,414,826.84 and Y = 396,500.00; thence West 18,126.84 feet to the point of beginning, containing approximately **127 acres**, all as more particularly outlined on a plat on file in the Office of Mineral Resources, Department of Natural Resources, as provided by the applicant. All bearings, distances and coordinates are based on Louisiana Coordinate System of 1927, (North or South Zone), where applicable.

NOTE: The above description of the Tract nominated for lease has been provided and corrected, where required, exclusively by the nomination party. Any mineral lease selected from this Tract and awarded by the Louisiana State Mineral Board shall be without warranty of any kind, either express, implied, or statutory, including, but not limited to, the implied warranties of merchantability and fitness for a particular purpose. Should the mineral lease awarded by the Louisiana State Mineral Board be subsequently modified, cancelled or abrogated due to the existence of conflicting leases, operating agreements, private claims or other future obligations or conditions which may affect all or any portion of the leased Tract, it shall not relieve the Lessee of the obligation to pay any bonus due thereon to the Louisiana State Mineral Board, nor shall the Louisiana State Mineral Board be obligated to refund any consideration paid by the Lessor prior to such modification, cancellation, or abrogation, including, but not limited to, bonuses, rentals and royalties.

NOTE: The State of Louisiana does hereby reserve, and this lease shall be subject to, the imprescriptible right of surface use in the nature of a servitude in favor of the Department of Natural Resources, including its Offices and Commissions, for the sole purpose of implementing, constructing, servicing and maintaining approved coastal zone management and/or restoration projects. Utilization of any and all rights derived under this lease by the mineral lessee, its agents, successors or assigns, shall not interfere with nor hinder the reasonable surface use by the Department of Natural Resources, its Offices or Commissions, as herein above reserved.

Applicant: E & E Exploration

Bidder	Cash Payment	Price / Acre	Rental	Oil	Gas	Other





### **TRACT 34865 - Plaquemines Parish, Louisiana**

All of the lands now or formerly constituting the beds and bottoms of all water bodies of every nature and description, and all islands and other lands formed by accretion, where allowed by law, or by reliction, and excepting tax adjudicated lands, belonging to the State of Louisiana and not presently under mineral lease on September 11, 2002, situated in Plaquemines Parish, Louisiana, and more particularly described as follows: Beginning at a point on the South boundary of State Lease 17265 having Coordinates of X = 2,415,909.45 and Y = 410,407.08; thence South 80 degrees 18 minutes 55 seconds East 11,374.96 feet along the said South boundary of State Lease No. 17265 to its Southeast corner having Coordinates of X = 2,427,122.30 and Y = 408,493.52; thence South 80 degrees 18 minutes 55 seconds East 687.49 feet to a point having Coordinates of X = 2,427,800.00 and Y = 408,377.87; thence South 11,877.87 feet to a point having Coordinates of X = 2,427,800.00 and Y = 396,500.00; thence West 12,973.16 feet to a point having Coordinates of X = 2,414,826.84 and Y = 396,500.00; thence North 15 degrees 00 minutes 41 seconds West 2,682.91 feet to a point having Coordinates of X = 2,414,131.93 and Y = 399,091.35; thence North 05 degrees 48 minutes 55 seconds West 3,099.41 feet to a point having Coordinates of X = 2,413,817.90 and Y = 402,174.81; thence North 09 degrees 10 minutes 45 seconds East 2,880.98 feet to a point having Coordinates of X = 2,414,277.48 and Y = 405,018.90; thence North 08 degrees 55 minutes 41 seconds East 555.42 feet to a point having Coordinates of X = 2,414,363.68 and Y = 405,567.59; thence North 15 degrees 47 minutes 56 seconds East 1,713.84 feet to a point having Coordinates of X = 2,414,830.29 and Y = 407,216.68; thence North 18 degrees 41 minutes 17 seconds East 3,367.97 feet to the point of beginning, containing approximately **851.00 acres**, all as more particularly outlined on a plat on file in the Office of Mineral Resources, Department of Natural Resources, as provided by the applicant. All bearings, distances and coordinates are based on Louisiana Coordinate System of 1927, (North or South Zone), where applicable.

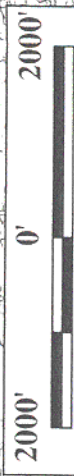
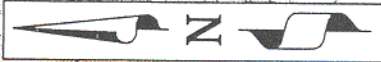
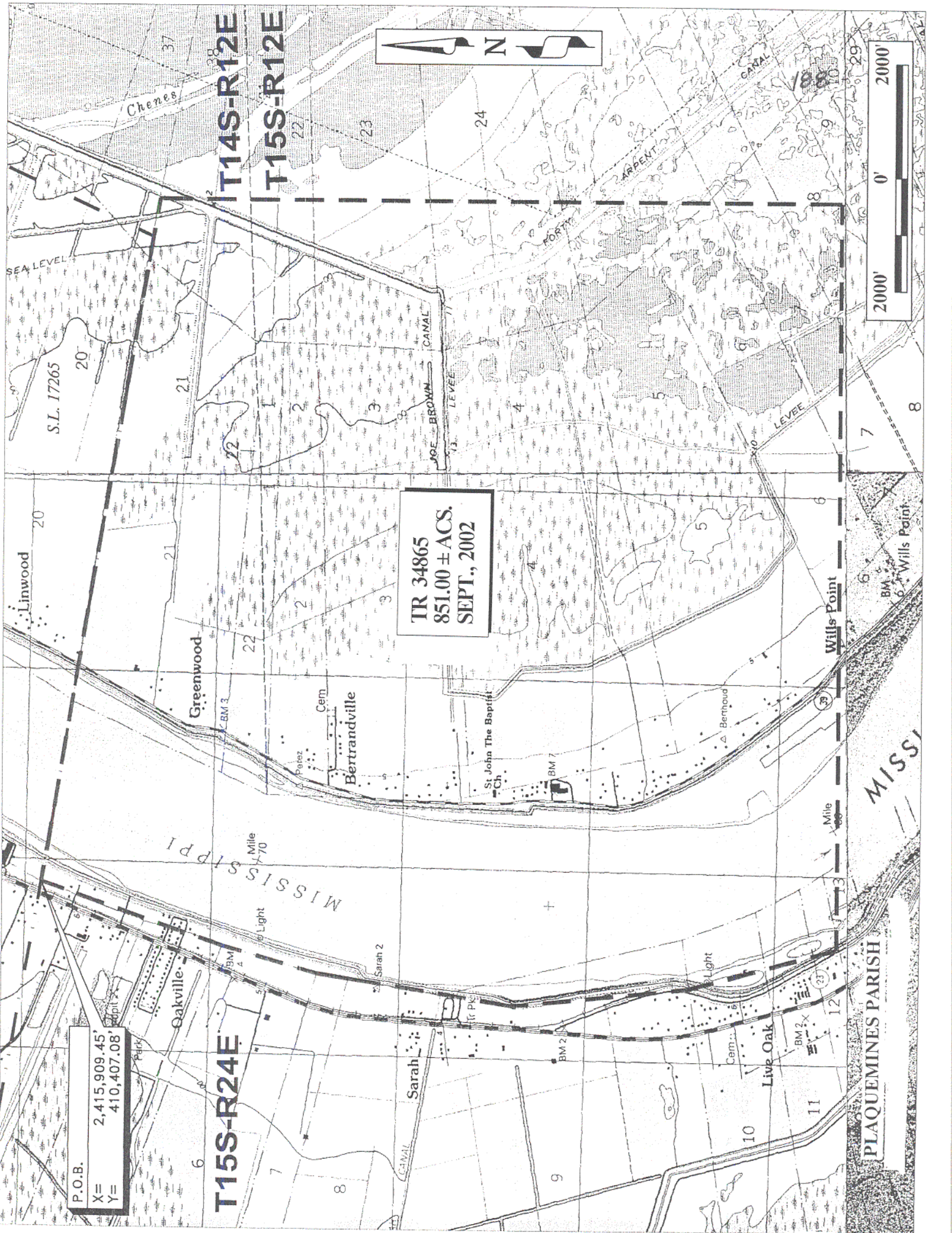
NOTE: The above description of the Tract nominated for lease has been provided and corrected, where required, exclusively by the nomination party. Any mineral lease selected from this Tract and awarded by the Louisiana State Mineral Board shall be without warranty of any kind, either express, implied, or statutory, including, but not limited to, the implied warranties of merchantability and fitness for a particular purpose. Should the mineral lease awarded by the Louisiana State Mineral Board be subsequently modified, cancelled or abrogated due to the existence of conflicting leases, operating agreements, private claims or other future obligations or conditions which may affect all or any portion of the leased Tract, it shall not relieve the Lessee of the obligation to pay any bonus due thereon to the Louisiana State Mineral Board, nor shall the Louisiana State Mineral Board be obligated to refund any consideration paid by the Lessor prior to such modification, cancellation, or abrogation, including, but not limited to, bonuses, rentals and royalties.

NOTE: The State of Louisiana does hereby reserve, and this lease shall be subject to, the imprescriptible right of surface use in the nature of a servitude in favor of the Department of Natural Resources, including its Offices and Commissions, for the sole purpose of implementing, constructing, servicing and maintaining approved coastal zone management and/or restoration projects. Utilization of any and all rights derived under this lease by the mineral lessee, its agents, successors or assigns, shall not interfere with nor hinder the reasonable surface use by the Department of Natural Resources, its Offices or Commissions, as herein above reserved.

Applicant: E & E Exploration

Bidder	Cash Payment	Price / Acre	Rental	Oil	Gas	Other





TR 34865  
851.00 ± ACS.  
SEPT., 2002

P.O.B.  
X= 2,415,909.45'  
Y= 410,407.08'

T15S-R24E

T14S-R12E

T15S-R12E

PLAQUEMINES PARISH

**TRACT 34866 - Plaquemines Parish, Louisiana**

All of the lands now or formerly constituting the beds and bottoms of all water bodies of every nature and description, and all islands and other lands formed by accretion, where allowed by law, or by reliction, and excepting tax adjudicated lands, belonging to the State of Louisiana and not presently under mineral lease on September 11, 2002, situated in Plaquemines Parish, Louisiana, and more particularly described as follows: Beginning at a point having Coordinates of X = 2,409,800.00 and Y = 396,500.00; thence East 18,000.00 feet to a point having Coordinates of X = 2,427,800.00 and Y = 396,500.00; thence South 8,400.00 feet to a point having Coordinates of X = 2,427,800.00 and Y = 388,100.00; thence West 18,000.00 feet to a point having Coordinates of X = 2,409,800.00 and Y = 388,100.00; thence North 8,400.00 feet to the point of beginning, containing approximately **675 acres**, all as more particularly outlined on a plat on file in the Office of Mineral Resources, Department of Natural Resources, as provided by the applicant. All bearings, distances and coordinates are based on Louisiana Coordinate System of 1927, (North or South Zone), where applicable.

NOTE: The above description of the Tract nominated for lease has been provided and corrected, where required, exclusively by the nomination party. Any mineral lease selected from this Tract and awarded by the Louisiana State Mineral Board shall be without warranty of any kind, either express, implied, or statutory, including, but not limited to, the implied warranties of merchantability and fitness for a particular purpose. Should the mineral lease awarded by the Louisiana State Mineral Board be subsequently modified, cancelled or abrogated due to the existence of conflicting leases, operating agreements, private claims or other future obligations or conditions which may affect all or any portion of the leased Tract, it shall not relieve the Lessee of the obligation to pay any bonus due thereon to the Louisiana State Mineral Board, nor shall the Louisiana State Mineral Board be obligated to refund any consideration paid by the Lessor prior to such modification, cancellation, or abrogation, including, but not limited to, bonuses, rentals and royalties.

NOTE: The State of Louisiana does hereby reserve, and this lease shall be subject to, the imprescriptible right of surface use in the nature of a servitude in favor of the Department of Natural Resources, including its Offices and Commissions, for the sole purpose of implementing, constructing, servicing and maintaining approved coastal zone management and/or restoration projects. Utilization of any and all rights derived under this lease by the mineral lessee, its agents, successors or assigns, shall not interfere with nor hinder the reasonable surface use by the Department of Natural Resources, its Offices or Commissions, as herein above reserved.

Applicant: E & E Exploration



Bidder	Cash Payment	Price / Acre	Rental	Oil	Gas	Other



T15S-R24E

T15S-R12E

P.O.B.

X= 2,409,800.00'  
Y= 396,500.00'

Live Oak

Dobard Cem.  
Jesuit Band

Ollie 5

Mile 68

Wills Point

MISSISSIPPI RIVER

TR 34866  
675 ± ACS.  
SEPT., 2002

Mile 67

Wills Point

Pumping Station

Mile 66x

Light

Light

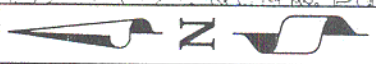
BM 17

BM 5

Cem.

PLAQUEMINES PARISH

2000' 0' 2000'





**TRACT 34867 - Jefferson and Lafourche Parishes, Louisiana**

All of the lands now or formerly constituting the beds and bottoms of all water bodies of every nature and description, and all islands and other lands formed by accretion, where allowed by law, or by reliction, and excepting tax adjudicated lands, belonging to the State of Louisiana and not presently under mineral lease on September 11, 2002, situated in Jefferson and Lafourche Parishes, Louisiana, and more particularly described as follows: Beginning at a point having Coordinates of X = 2,368,900.00 and Y = 303,300.00; thence North 12,700.00 feet to a point having Coordinates of X = 2,368,900.00 and Y = 316,000.00; thence East approximately 954 feet to a point on the Western boundary of State Lease No. 2381, as amended; thence Southeasterly, Southwesterly, Southeasterly, and Northwesterly along the boundary of said State Lease No. 2381, as amended, to the intersection of an East - West line having a Coordinate of Y = 316,000.00; thence East approximately 2,577 feet to a point on the Southern boundary of State Lease No. 1972, as amended; thence Southeasterly and Northeasterly along the Southern boundary of said State Lease No. 1972, as amended, to the intersection of a North - South line having a Coordinate of X = 2,377,970.00; thence South approximately 6,649 feet to the Northwest corner of State Lease No. 2383A, as amended, having Coordinates of X = 2,377,970.00 and Y = 309,330.03; thence South 2,530.03 feet along the Western boundary of said State Lease No. 2383A, as amended, to its most Westerly Southwest corner having Coordinates of X = 2,377,970.00 and Y = 306,800.00; thence South 2,877.46 feet to a point on the boundary of State Lease No. 2383C, as amended, having Coordinates of X = 2,377,970.00 and Y = 303,922.54; thence along the boundary of said State Lease No. 2383C, as amended, the following courses: along an arc of a curve having a radius of 1,000.00 feet and a center of X = 2,378,015.76 and Y = 302,923.59 whose long cord bears South 65 degrees 57 minutes 32 seconds West 730.35 feet to a point having Coordinates of X = 2,377,303.01 and Y = 303,625.01 and along an arc of a curve having a radius of 2,000.00 feet and a center of X = 2,378,793.66 and Y = 302,291.61 whose long cord bears South 36 degrees 02 minutes 44 seconds West 401.96 feet to a point having Coordinates of X = 2,377,066.48 and Y = 303,300.00; thence West 8,166.48 feet to the point of beginning, containing approximately **2,487 acres**, all as more particularly outlined on a plat on file in the Office of Mineral Resources, Department of Natural Resources, as provided by the applicant. All bearings, distances and coordinates are based on Louisiana Coordinate System of 1927, (North or South Zone), where applicable.

NOTE: The above description of the Tract nominated for lease has been provided and corrected, where required, exclusively by the nomination party. Any mineral lease selected from this Tract and awarded by the Louisiana State Mineral Board shall be without warranty of any kind, either express, implied, or statutory, including, but not limited to, the implied warranties of merchantability and fitness for a particular purpose. Should the mineral lease awarded by the Louisiana State Mineral Board be subsequently modified, cancelled or abrogated due to the existence of conflicting leases, operating agreements, private claims or other future obligations or conditions which may affect all or any portion

of the leased Tract, it shall not relieve the Lessee of the obligation to pay any bonus due thereon to the Louisiana State Mineral Board, not shall the Louisiana State Mineral Board be obligated to refund any consideration paid by the Lessor prior to such modification, cancellation, or abrogation, including, but not limited to, bonuses, rentals and royalties.

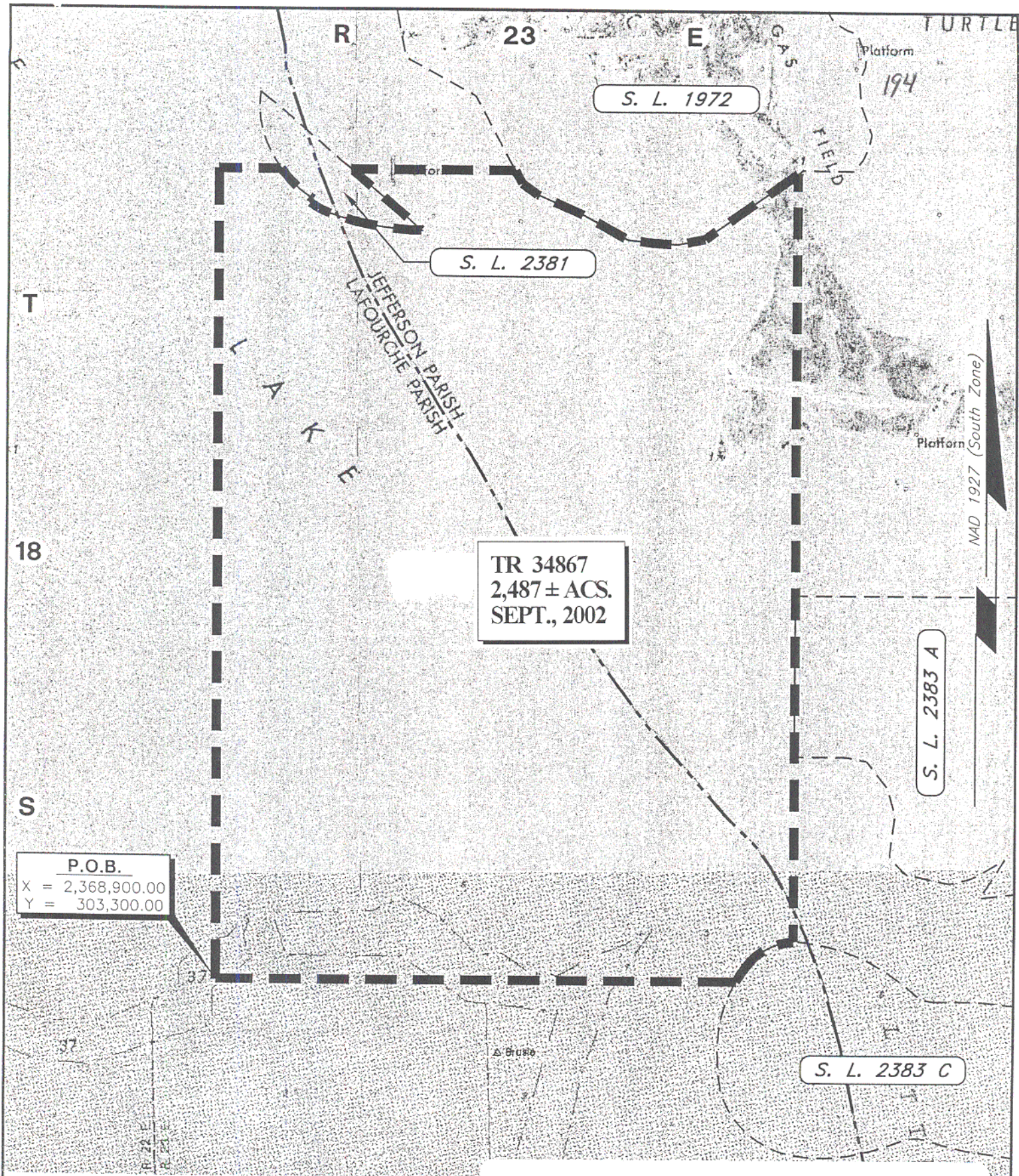
NOTE: The Department of Wildlife and Fisheries has designated certain areas in the coastal waters of the State of Louisiana as Oyster Seed Bed Areas. The exact location of those Seed Bed Areas must be obtained from the Department of Wildlife and Fisheries and any work done under a mineral lease from the State of Louisiana may necessarily be conducted in conformity with the rules and regulations promulgated by the said Department of Wildlife and Fisheries for Oyster Seed Bed Areas.

NOTE: The State of Louisiana does hereby reserve, and this lease shall be subject to, the imprescriptible right of surface use in the nature of a servitude in favor of the Department of Natural Resources, including its Offices and Commissions, for the sole purpose of implementing, constructing, servicing and maintaining approved coastal zone management and/or restoration projects. Utilization of any and all rights derived under this lease by the mineral lessee, its agents, successors or assigns, shall not interfere with nor hinder the reasonable surface use by the Department of Natural Resources, its Offices or Commissions, as herein above reserved.

Applicant: M. J. Garvey & Associates

Bidder	Cash Payment	Price / Acre	Rental	Oil	Gas	Other





JEFFERSON & LAFOURCHE PARISHES, LOUISIANA

SCALE : 1" = 2000'



**TRACT 34868 - Lafourche Parish, Louisiana**

All of the lands now or formerly constituting the beds and bottoms of all water bodies of every nature and description, and all islands and other lands formed by accretion, where allowed by law, or by reliction, and excepting tax adjudicated lands, belonging to the State of Louisiana and not presently under mineral lease on September 11, 2002, situated in Lafourche Parish, Louisiana, and more particularly described as follows: Beginning at a point having Coordinates of X = 2,339,313.00 and Y = 167,988.00; thence West 5,827.00 feet to a point having Coordinates of X = 2,333,486.00 and Y = 167,988.00; thence North 5,717.23 feet to a point having Coordinates of X = 2,333,486.00 and Y = 173,705.23; thence North 88 degrees 07 minutes 45 seconds East 5,830.11 feet to a point having Coordinates of X = 2,339,313.00 and Y = 173,895.56; thence South 5,907.56 feet to the point of beginning, containing approximately **774 acres**, all as more particularly outlined on a plat on file in the Office of Mineral Resources, Department of Natural Resources, as provided by the applicant. All bearings, distances and coordinates are based on Louisiana Coordinate System of 1927, (North or South Zone), where applicable.

NOTE: The above description of the Tract nominated for lease has been provided and corrected, where required, exclusively by the nomination party. Any mineral lease selected from this Tract and awarded by the Louisiana State Mineral Board shall be without warranty of any kind, either express, implied, or statutory, including, but not limited to, the implied warranties of merchantability and fitness for a particular purpose. Should the mineral lease awarded by the Louisiana State Mineral Board be subsequently modified, cancelled or abrogated due to the existence of conflicting leases, operating agreements, private claims or other future obligations or conditions which may affect all or any portion of the leased Tract, it shall not relieve the Lessee of the obligation to pay any bonus due thereon to the Louisiana State Mineral Board, nor shall the Louisiana State Mineral Board be obligated to refund any consideration paid by the Lessor prior to such modification, cancellation, or abrogation, including, but not limited to, bonuses, rentals and royalties.

NOTE: The Department of Wildlife and Fisheries has designated certain areas in the coastal waters of the State of Louisiana as Oyster Seed Bed Areas. The exact location of those Seed Bed Areas must be obtained from the Department of Wildlife and Fisheries and any work done under a mineral lease from the State of Louisiana may necessarily be conducted in conformity with the rules and regulations promulgated by the said Department of Wildlife and Fisheries for Oyster Seed Bed Areas.

NOTE: The State of Louisiana does hereby reserve, and this lease shall be subject to, the imprescriptible right of surface use in the nature of a servitude in favor of the Department of Natural Resources, including its Offices and Commissions, for the sole purpose of implementing, constructing, servicing and maintaining approved coastal zone management and/or restoration projects. Utilization of any and all rights derived under this lease by the mineral lessee, its agents, successors or assigns,

shall not interfere with nor hinder the reasonable surface use by the Department of Natural Resources, its Offices or Commissions, as herein above reserved.

Applicant: Cypress Energy Corporation

Bidder	Cash Payment	Price / Acre	Rental	Oil	Gas	Other

DEVILS HAY

TR 34868  
774.00 ± ACS.  
SEPT., 2002

P.O.B. —  
X= 2,339,313.00'  
Y= 167,988.00'

TIMBALI R

LAFOURCHE PARISH

2000' 0' 2000'



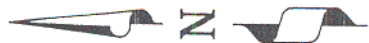
197

T I N

TIMBAL

1/5

N





**TRACT 34869 - Lafourche Parish, Louisiana**

All of the lands now or formerly constituting the beds and bottoms of all water bodies of every nature and description, and all islands and other lands formed by accretion, where allowed by law, or by reliction, and excepting tax adjudicated lands, belonging to the State of Louisiana and not presently under mineral lease on September 11, 2002, situated in Lafourche Parish, Louisiana, and more particularly described as follows: Beginning at a point having Coordinates of X = 2,339,313.00 and Y = 167,988.00; thence South 2,670.00 feet to a point having Coordinates of X = 2,339,313.00 and Y = 165,318.00; thence West 5,827.00 feet to a point having Coordinates of X = 2,333,486.00 and Y = 165,318.00; thence North 2,670.00 feet to a point having Coordinates of X = 2,333,486.00 and Y = 167,988.00; thence East 5,827.00 feet to the point of beginning, containing approximately **357.16 acres**, all as more particularly outlined on a plat on file in the Office of Mineral Resources, Department of Natural Resources, as provided by the applicant. All bearings, distances and coordinates are based on Louisiana Coordinate System of 1927, (North or South Zone), where applicable.

NOTE: The above description of the Tract nominated for lease has been provided and corrected, where required, exclusively by the nomination party. Any mineral lease selected from this Tract and awarded by the Louisiana State Mineral Board shall be without warranty of any kind, either express, implied, or statutory, including, but not limited to, the implied warranties of merchantability and fitness for a particular purpose. Should the mineral lease awarded by the Louisiana State Mineral Board be subsequently modified, cancelled or abrogated due to the existence of conflicting leases, operating agreements, private claims or other future obligations or conditions which may affect all or any portion of the leased Tract, it shall not relieve the Lessee of the obligation to pay any bonus due thereon to the Louisiana State Mineral Board, nor shall the Louisiana State Mineral Board be obligated to refund any consideration paid by the Lessor prior to such modification, cancellation, or abrogation, including, but not limited to, bonuses, rentals and royalties.

NOTE: The Department of Wildlife and Fisheries has designated certain areas in the coastal waters of the State of Louisiana as Oyster Seed Bed Areas. The exact location of those Seed Bed Areas must be obtained from the Department of Wildlife and Fisheries and any work done under a mineral lease from the State of Louisiana may necessarily be conducted in conformity with the rules and regulations promulgated by the said Department of Wildlife and Fisheries for Oyster Seed Bed Areas.

NOTE: The State of Louisiana does hereby reserve, and this lease shall be subject to, the imprescriptible right of surface use in the nature of a servitude in favor of the Department of Natural Resources, including its Offices and Commissions, for the sole purpose of implementing, constructing, servicing and maintaining approved coastal zone management and/or restoration projects. Utilization of any and all rights derived under this lease by the mineral lessee, its agents, successors or assigns,

shall not interfere with nor hinder the reasonable surface use by the Department of Natural Resources, its Offices or Commissions, as herein above reserved.

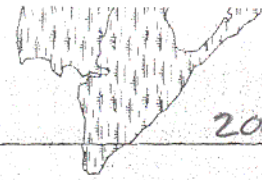
Applicant: Cypress Energy Corporation

Bidder	Cash Payment	Price / Acre	Rental	Oil	Gas	Other



TMBAL

T I A



200

TIMBAL  
BAY

P.O.B.  
X= 2,339,313.00'  
Y= 167,988.00'

TR 34869  
357.16 ± ACS.  
SEPT., 2002

TIMBAL  
BAY  
FEILER



LAFOURCHE PARISH

### **TRACT 34870 - Lafourche Parish, Louisiana**

All of the lands now or formerly constituting the beds and bottoms of all water bodies of every nature and description, and all islands and other lands formed by accretion, where allowed by law, or by reliction, and excepting tax adjudicated lands, belonging to the State of Louisiana and not presently under mineral lease on September 11, 2002, situated in Lafourche Parish, Louisiana, and more particularly described as follows: Beginning at a point having Coordinates of X = 2,339,313.00 and Y = 167,988.00; thence North 5,907.56 feet to a point having Coordinates of X = 2,339,313.00 and Y = 173,895.56; thence North 88 degrees 07 minutes 45 seconds East 7,472.63 feet to a point having Coordinates of X = 2,346,781.65 and Y = 174,139.51; thence South 01 degrees 07 minutes 59 seconds East 5,280.43 feet to a point having Coordinates of X = 2,346,886.07 and Y = 168,860.11; thence South 00 degrees 31 minutes 02 seconds East 872.15 feet to a point having Coordinates of X = 2,346,893.94 and Y = 167,988.00; thence West 7,580.94 feet to the point of beginning, containing approximately **901.00 acres**, all as more particularly outlined on a plat on file in the Office of Mineral Resources, Department of Natural Resources, as provided by the applicant. All bearings, distances and coordinates are based on Louisiana Coordinate System of 1927, (North or South Zone), where applicable.

NOTE: The above description of the Tract nominated for lease has been provided and corrected, where required, exclusively by the nomination party. Any mineral lease selected from this Tract and awarded by the Louisiana State Mineral Board shall be without warranty of any kind, either express, implied, or statutory, including, but not limited to, the implied warranties of merchantability and fitness for a particular purpose. Should the mineral lease awarded by the Louisiana State Mineral Board be subsequently modified, cancelled or abrogated due to the existence of conflicting leases, operating agreements, private claims or other future obligations or conditions which may affect all or any portion of the leased Tract, it shall not relieve the Lessee of the obligation to pay any bonus due thereon to the Louisiana State Mineral Board, nor shall the Louisiana State Mineral Board be obligated to refund any consideration paid by the Lessor prior to such modification, cancellation, or abrogation, including, but not limited to, bonuses, rentals and royalties.

NOTE: The Department of Wildlife and Fisheries has designated certain areas in the coastal waters of the State of Louisiana as Oyster Seed Bed Areas. The exact location of those Seed Bed Areas must be obtained from the Department of Wildlife and Fisheries and any work done under a mineral lease from the State of Louisiana may necessarily be conducted in conformity with the rules and regulations promulgated by the said Department of Wildlife and Fisheries for Oyster Seed Bed Areas.

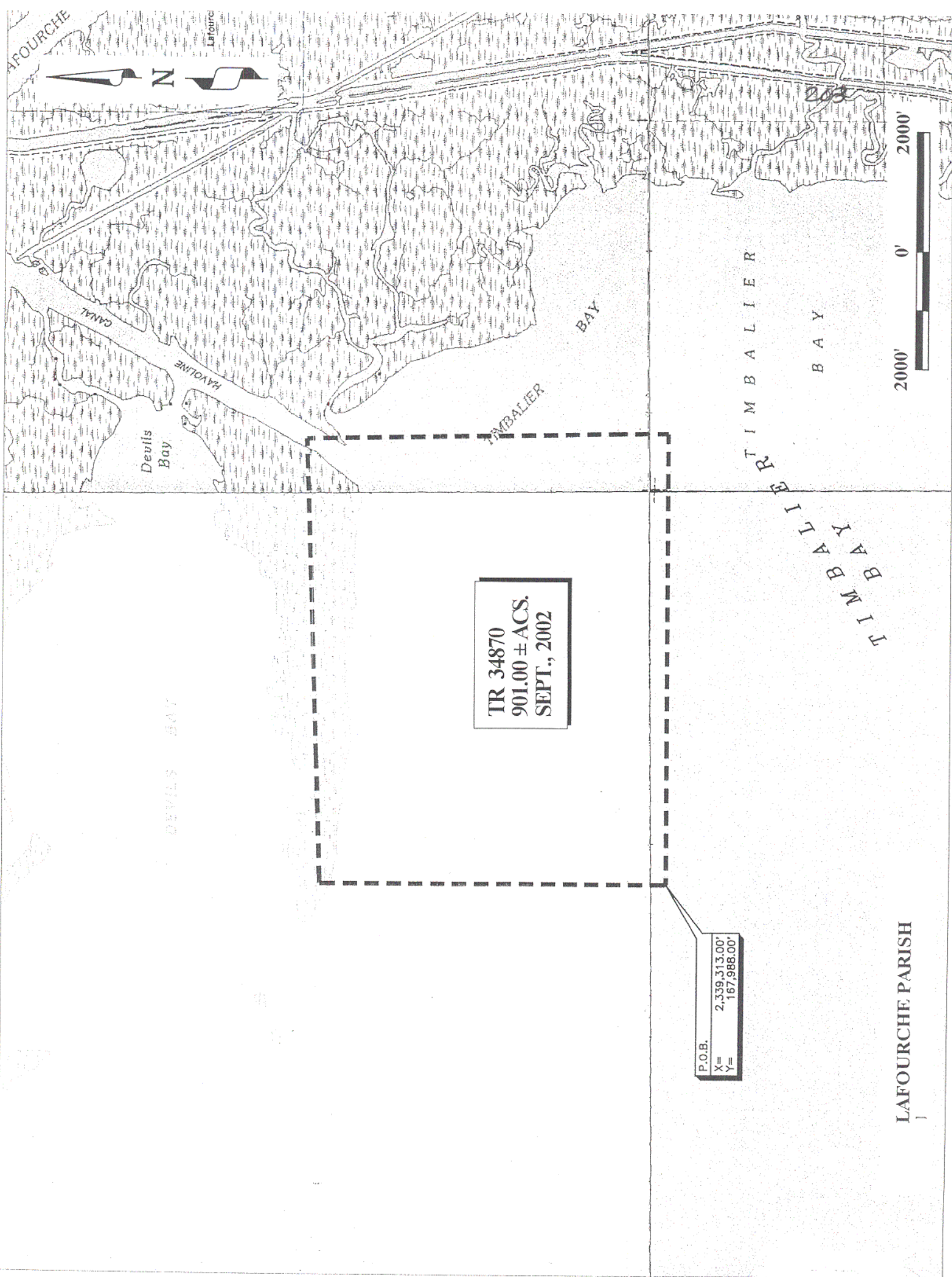
NOTE: The State of Louisiana does hereby reserve, and this lease shall be subject to, the imprescriptible right of surface use in the nature of a servitude in favor of the Department of Natural Resources, including its Offices and Commissions, for the sole purpose of implementing,

constructing, servicing and maintaining approved coastal zone management and/or restoration projects. Utilization of any and all rights derived under this lease by the mineral lessee, its agents, successors or assigns, shall not interfere with nor hinder the reasonable surface use by the Department of Natural Resources, its Offices or Commissions, as herein above reserved.

Applicant: Cypress Energy Corporation

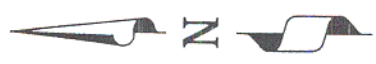
Bidder	Cash Payment	Price / Acre	Rental	Oil	Gas	Other





LAFOURCHE

Lafourche



CANAL

Devils Bay

HAYOLINE

Bay

TIMBALIER

TIMBALIER

BAY

2000' 0' 2000'

LAFOURCHE PARISH

TR 34870  
901.00 ± ACS.  
SEPT., 2002

P.O.B.  
X= 2,339,313.00'  
Y= 167,988.00'