

TRACT 32773 - Cameron Parish, Louisiana

All of the lands now or formerly constituting the beds and bottoms of all water bodies of every nature and description and all islands and other lands formed by accretion or reliction, except tax lands, owned by and not under mineral lease from the State of Louisiana on September 13, 2000, situated in Cameron Parish, Louisiana, within the following described boundaries: Beginning at a point having Coordinates of X = 1,564,990.07 and Y = 464,136.98; thence East 10,077.49 feet to a point having Coordinates of X = 1,575,067.56 and Y = 464,136.98; thence South 7,080.00 feet to a point having Coordinates of X = 1,575,067.56 and Y = 457,056.98; thence South 89 degrees 57 minutes 18 seconds West 10,164.30 feet to the Southeast corner of State Lease No. 1812, as amended, having Coordinates of X = 1,564,903.26 and Y = 457,049.02; thence North 00 degrees 42 minutes 06 seconds East 2,640.00 feet to the most Easterly Northeast corner of said State Lease No. 1812 having Coordinates of X = 1,564,935.59 and Y = 459,688.82; thence North 00 degrees 42 minutes 06 seconds East 4,448.50 feet to the point of beginning, containing approximately 1,427 acres, as shown outlined in red on a plat on file in the Office of Mineral Resources, Department of Natural Resources. All bearings, distances and coordinates are based on Louisiana Coordinate System of 1927 (South Zone).

NOTE: The State of Louisiana does hereby reserve, and this lease shall be subject to, the imprescriptible right of surface use in the nature of a servitude in favor of the Department of Natural Resources, including its Offices and Commissions, for the sole purpose of implementing, constructing, servicing and maintaining approved coastal zone management and/or restoration projects. Utilization of any and all rights derived under this lease by the mineral lessee, its agents, successors or assigns, shall not interfere with nor hinder the reasonable surface use by the Department of Natural Resources, its Offices or Commissions, as hereinabove reserved.

Applicant: Stephen M. Jenkins & Associates, Inc.

Bidder	Cash Payment	Price / Acre	Rental	Oil	Gas	Other

P.O.B.
X=1,564,990.07
Y= 464,136.98

TR 32773
1,427 +/- ACS.
SEPT., 2000

GRAND LAKE

SL 1812

Bird Island

CAMERON PARISH

OFFICIAL COPY
OFFICE OF MINERAL RESOURCES
DEPT. OF NATURAL RESOURCES
DO NOT REMOVE

2000 0 2000 Feet



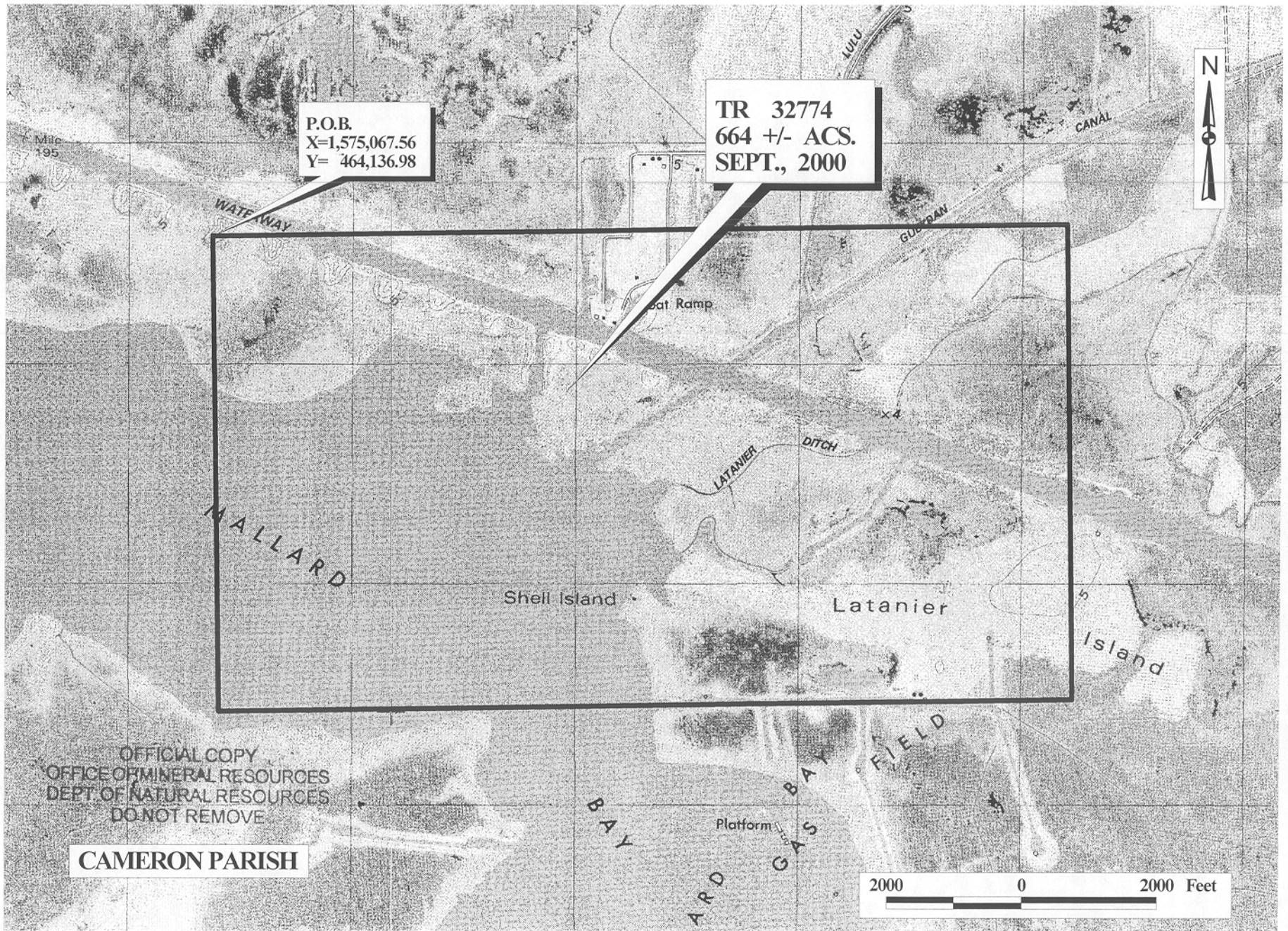
TRACT 32774 - Cameron Parish, Louisiana

All of the lands now or formerly constituting the beds and bottoms of all water bodies of every nature and description and all islands and other lands formed by accretion or reliction, except tax lands, owned by and not under mineral lease from the State of Louisiana on September 13, 2000, situated in Cameron Parish, Louisiana, within the following described boundaries: Beginning at a point having Coordinates of X = 1,575,067.56 and Y = 464,136.98; thence East 12,560.00 feet to a point having Coordinates of X = 1,587,627.56 and Y = 464,136.98; thence South 7,080.00 feet to a point having Coordinates of X = 1,587,627.56 and Y = 457,056.98; thence West 12,560.00 feet to a point having Coordinates of X = 1,575,067.56 and Y = 457,056.98; thence North 7,080.00 feet to the point of beginning, containing approximately **664 acres**, as shown outlined in red on a plat on file in the Office of Mineral Resources, Department of Natural Resources. All bearings, distances and coordinates are based on Louisiana Coordinate System of 1927 (South Zone).

NOTE: The State of Louisiana does hereby reserve, and this lease shall be subject to, the imprescriptible right of surface use in the nature of a servitude in favor of the Department of Natural Resources, including its Offices and Commissions, for the sole purpose of implementing, constructing, servicing and maintaining approved coastal zone management and/or restoration projects. Utilization of any and all rights derived under this lease by the mineral lessee, its agents, successors or assigns, shall not interfere with nor hinder the reasonable surface use by the Department of Natural Resources, its Offices or Commissions, as hereinabove reserved.

Applicant: Stephen M. Jenkins & Associates, Inc.

Bidder	Cash Payment	Price / Acre	Rental	Oil	Gas	Other

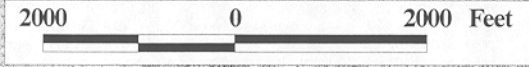


P.O.B.
X=1,575,067.56
Y= 464,136.98

TR 32774
664 +/- ACS.
SEPT., 2000

OFFICIAL COPY
OFFICE OF MINERAL RESOURCES
DEPT. OF NATURAL RESOURCES
DO NOT REMOVE

CAMERON PARISH



66

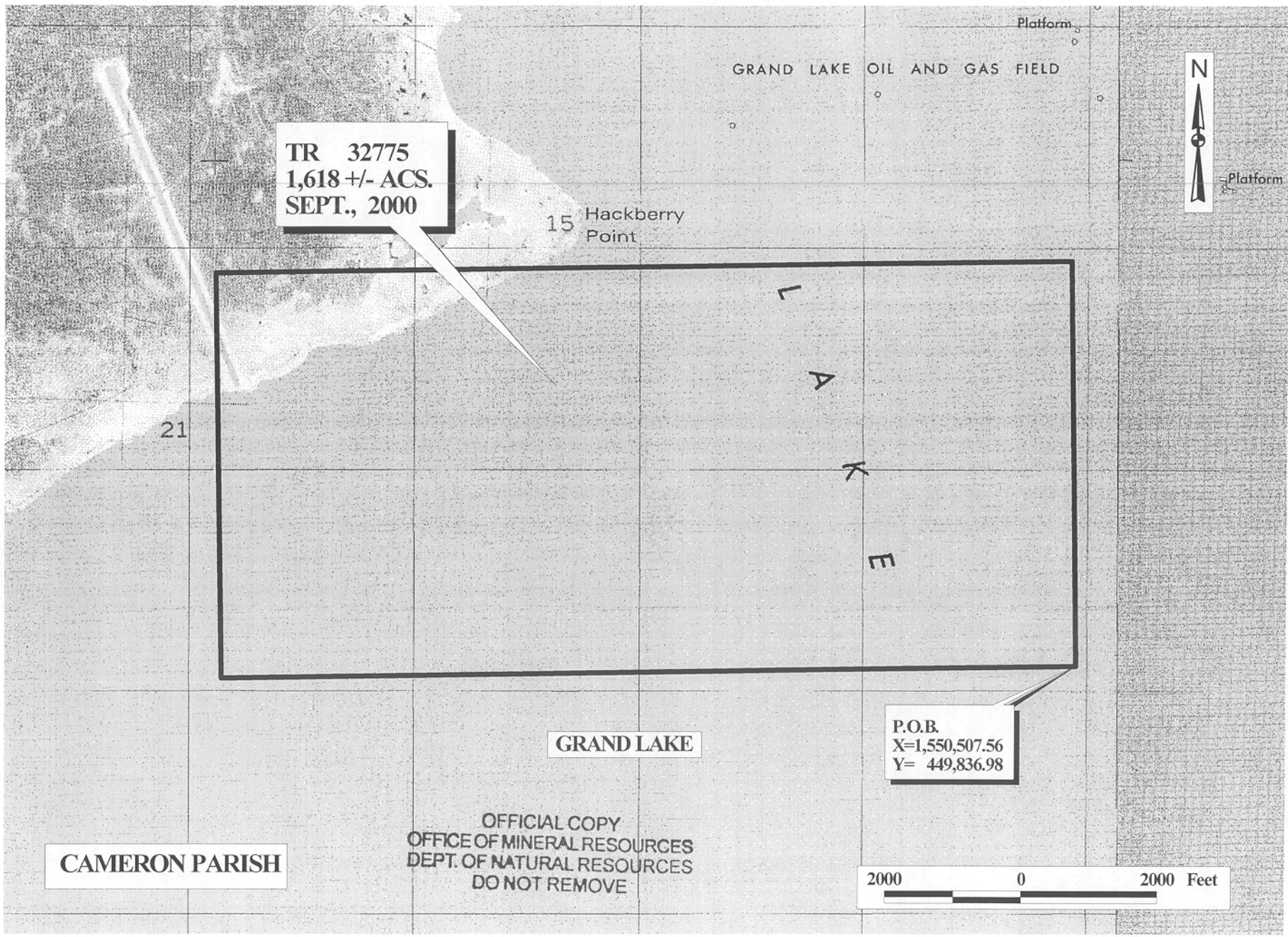
TRACT 32775 - Cameron Parish, Louisiana

All of the lands now or formerly constituting the beds and bottoms of all water bodies of every nature and description and all islands and other lands formed by accretion or reliction, except tax lands, owned by and not under mineral lease from the State of Louisiana on September 13, 2000, situated in Cameron Parish, Louisiana, within the following described boundaries: Beginning at a point having Coordinates of X = 1,550,507.56 and Y = 449,836.98; thence West 12,500.00 feet to a point having Coordinates of X = 1,538,007.56 and Y = 449,836.98; thence North 6,000.00 feet to a point having Coordinates of X = 1,538,007.56 and Y = 455,836.98; thence East 12,500.00 feet to a point having Coordinates of X = 1,550,507.56 and Y = 455,836.98; thence South 6,000.00 feet to the point of beginning, containing approximately **1,618 acres**, as shown outlined in red on a plat on file in the Office of Mineral Resources, Department of Natural Resources. All bearings, distances and coordinates are based on Louisiana Coordinate System of 1927 (South Zone).

NOTE: The State of Louisiana does hereby reserve, and this lease shall be subject to, the imprescriptible right of surface use in the nature of a servitude in favor of the Department of Natural Resources, including its Offices and Commissions, for the sole purpose of implementing, constructing, servicing and maintaining approved coastal zone management and/or restoration projects. Utilization of any and all rights derived under this lease by the mineral lessee, its agents, successors or assigns, shall not interfere with nor hinder the reasonable surface use by the Department of Natural Resources, its Offices or Commissions, as hereinabove reserved.

Applicant: Stephen M. Jenkins & Associates, Inc.

Bidder	Cash Payment	Price / Acre	Rental	Oil	Gas	Other



TR 32775
1,618 +/- ACS.
SEPT., 2000

15 Hackberry Point

P.O.B.
X=1,550,507.56
Y= 449,836.98

GRAND LAKE

CAMERON PARISH

OFFICIAL COPY
OFFICE OF MINERAL RESOURCES
DEPT. OF NATURAL RESOURCES
DO NOT REMOVE

2000 0 2000 Feet