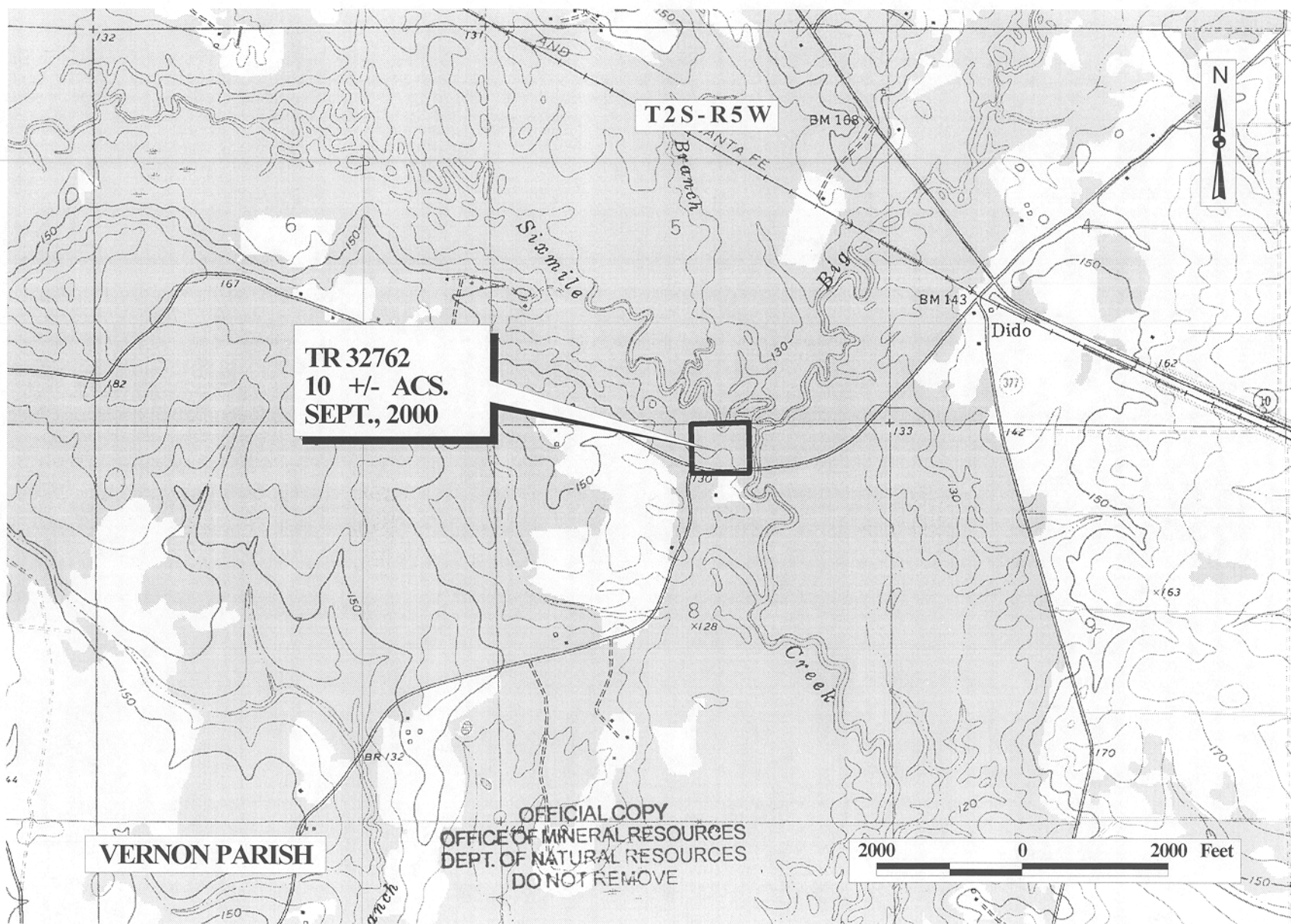


**TRACT 32762 - Vernon Parish, Louisiana**

All of the right, title and interest of the State of Louisiana in the mineral rights in and to the following described property, which is not under mineral lease from the State of Louisiana on September 13, 2000, situated in Vernon Parish, Louisiana, and being more fully described as follows: That portion of land in the Northwest corner of the Northwest Quarter of the Northeast Quarter of Section 8, Township 2 South, Range 5 West, Vernon Parish, Louisiana, lying North of a public road and West of Six Mile Creek, being the same property adjudicated to the State of Louisiana for unpaid property taxes for the year 1931 in the name of Henry McCullough and also being homesteaded in the name of I. McCullough of Vernon Parish, Louisiana, as Homestead No. 480, containing approximately **10 acres**, as shown outlined in red on a plat on file in the Office of Mineral Resources, Department of Natural Resources.

Applicant: Sandoz & Associates, Inc.

Bidder	Cash Payment	Price / Acre	Rental	Oil	Gas	Other



VERNON PARISH

TR 32762  
10 +/- ACS.  
SEPT., 2000

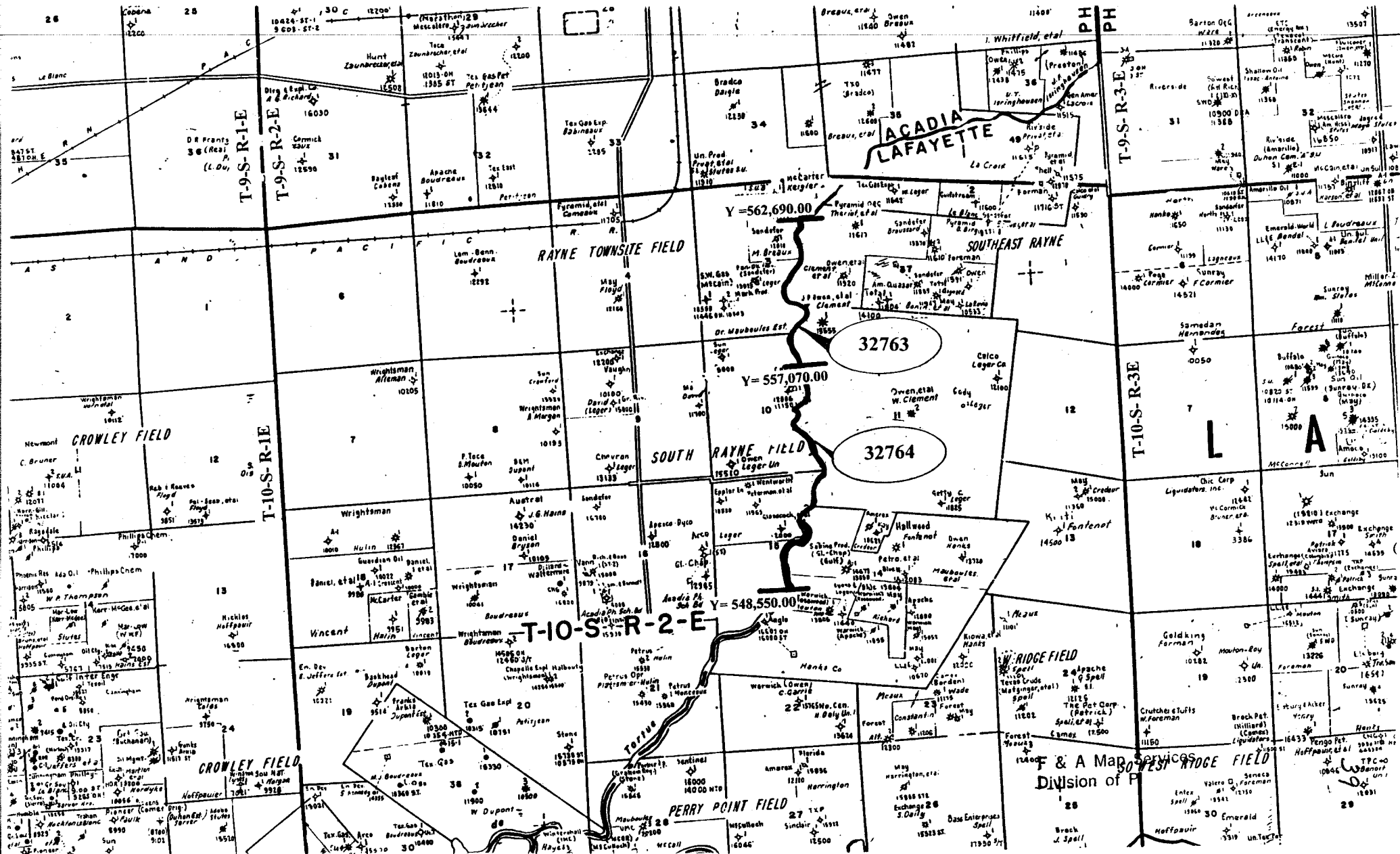
T2S-R5W

OFFICIAL COPY  
OFFICE OF MINERAL RESOURCES  
DEPT. OF NATURAL RESOURCES  
DO NOT REMOVE

2000 0 2000 Feet

MAP NOT TO SCALE

NOT TO BE USED WITH A PORTION BID  
FOR INFORMATIONAL PURPOSES ONLY!

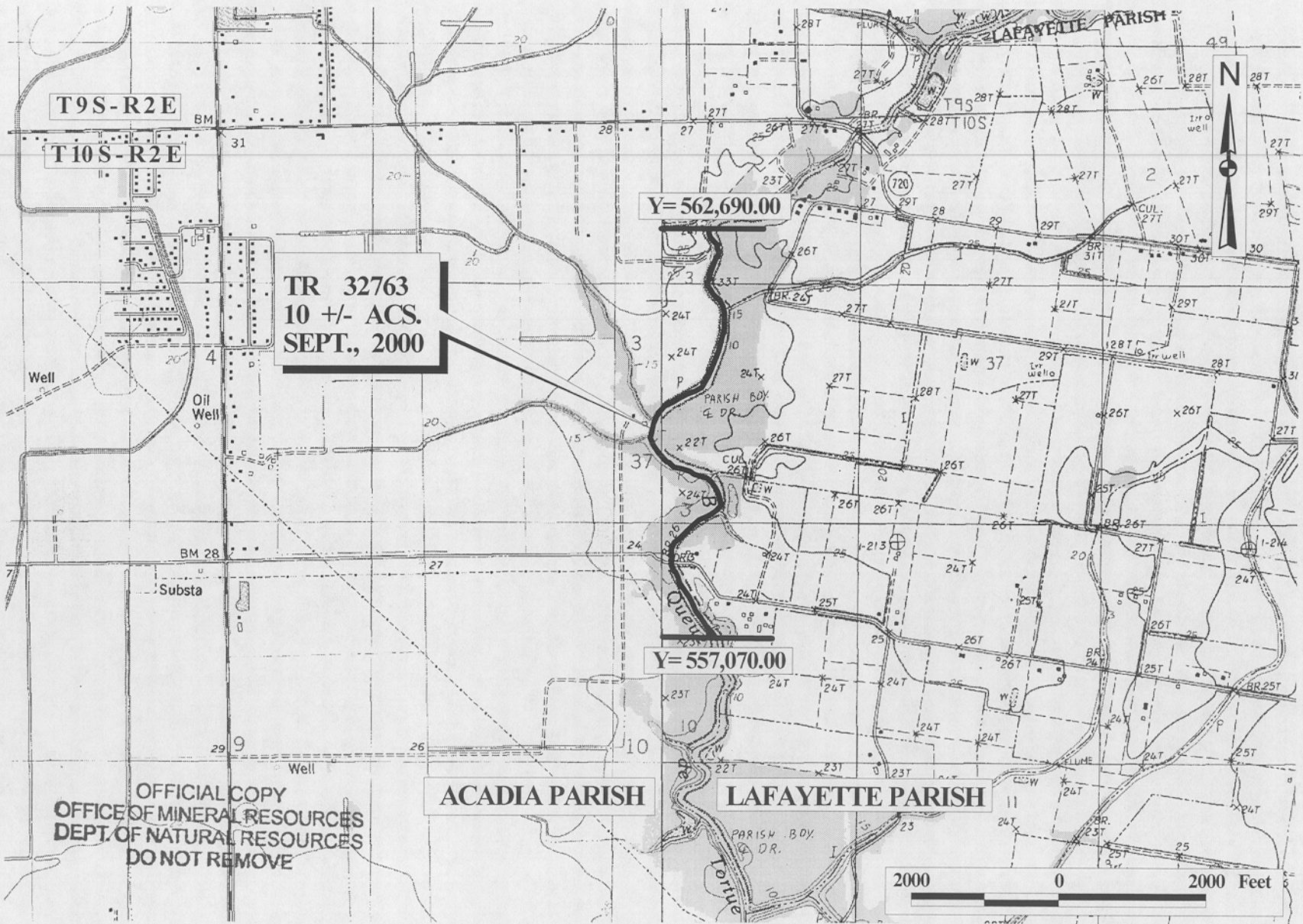


**TRACT 32763 - Acadia and Lafayette Parishes, Louisiana**

All of the lands now or formerly constituting the beds and bottoms of Bayou Queue de Tortue and all islands and other lands formed by accretion or reliction, except tax lands, owned by and not under mineral lease from the State of Louisiana on September 13, 2000, situated in Acadia and Lafayette Parishes, Louisiana, within the following described boundaries: That portion of Bayou Queue de Tortue bounded on the North or upstream by an East-West line having a Coordinate of Y = 562,690.00 and bounded on the South or downstream by an East-West line having a Coordinate of Y = 557,070.00, containing approximately **10 acres**, as shown outlined in red on a plat on file in the Office of Mineral Resources, Department of Natural Resources. All bearings, distances and coordinates are based on Louisiana Coordinate System of 1927 (South Zone).

Applicant: Rebel Minerals, Inc.

Bidder	Cash Payment	Price / Acre	Rental	Oil	Gas	Other



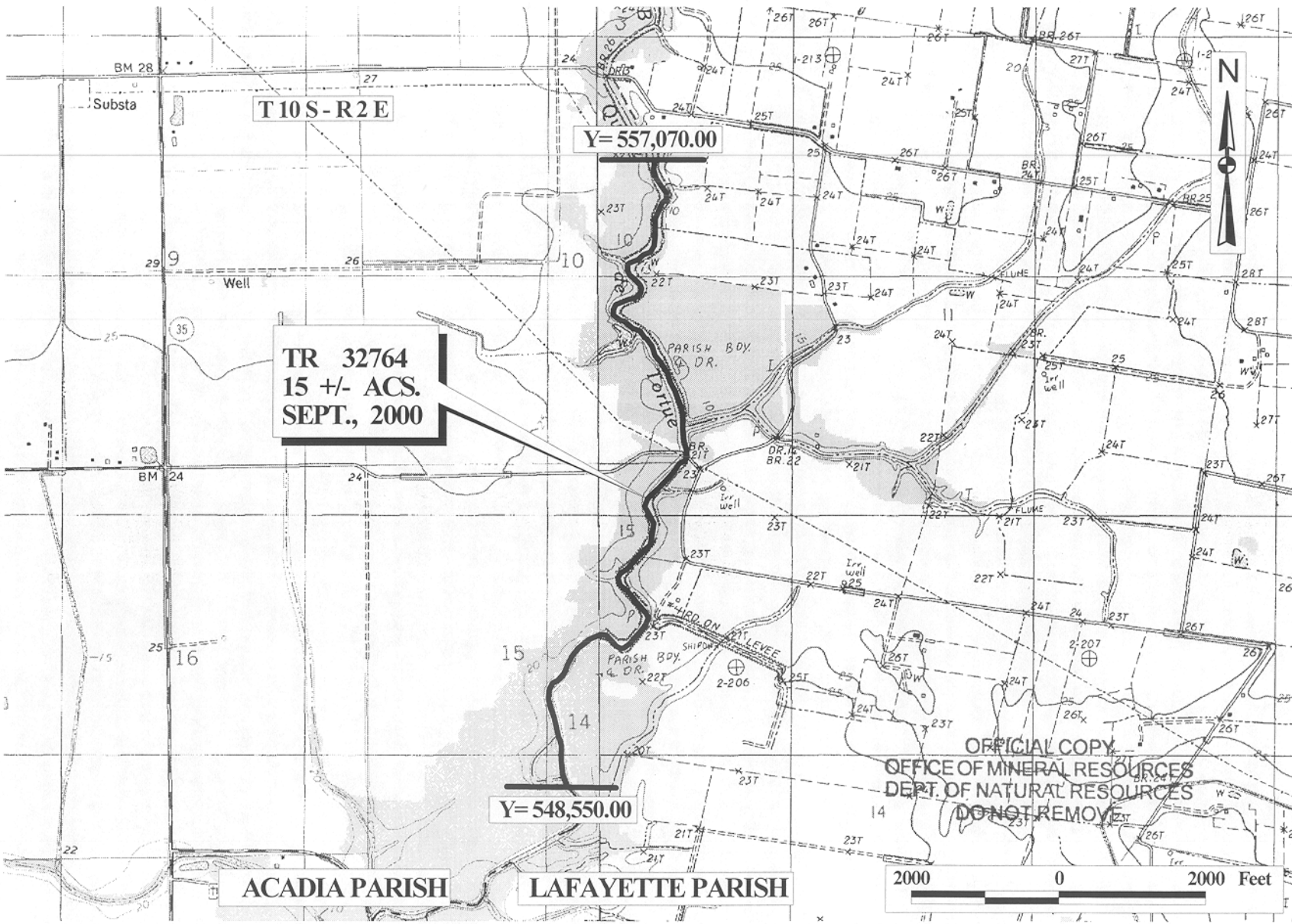
OFFICIAL COPY  
OFFICE OF MINERAL RESOURCES  
DEPT. OF NATURAL RESOURCES  
DO NOT REMOVE

**TRACT 32764 - Acadia and Lafayette Parishes, Louisiana**

All of the lands now or formerly constituting the beds and bottoms of Bayou Queue de Tortue and all islands and other lands formed by accretion or reliction, except tax lands, owned by and not under mineral lease from the State of Louisiana on September 13, 2000, situated in Acadia and Lafayette Parishes, Louisiana, within the following described boundaries: That portion of Bayou Queue de Tortue bounded on the North or upstream by an East-West line having a Coordinate of Y = 557,070.00 and bounded on the South or downstream by an East-West line having a Coordinate of Y = 548,550.00, containing approximately **15 acres**, as shown outlined in red on a plat on file in the Office of Mineral Resources, Department of Natural Resources. All bearings, distances and coordinates are based on Louisiana Coordinate System of 1927 (South Zone).

Applicant: Rebel Minerals, Inc.

Bidder	Cash Payment	Price / Acre	Rental	Oil	Gas	Other



T10S-R2E

Y= 557,070.00

TR 32764  
15 +/- ACS.  
SEPT., 2000

Y= 548,550.00

ACADIA PARISH

LAFAYETTE PARISH

OFFICIAL COPY  
OFFICE OF MINERAL RESOURCES  
DEPT. OF NATURAL RESOURCES  
DO NOT REMOVE

2000 0 2000 Feet