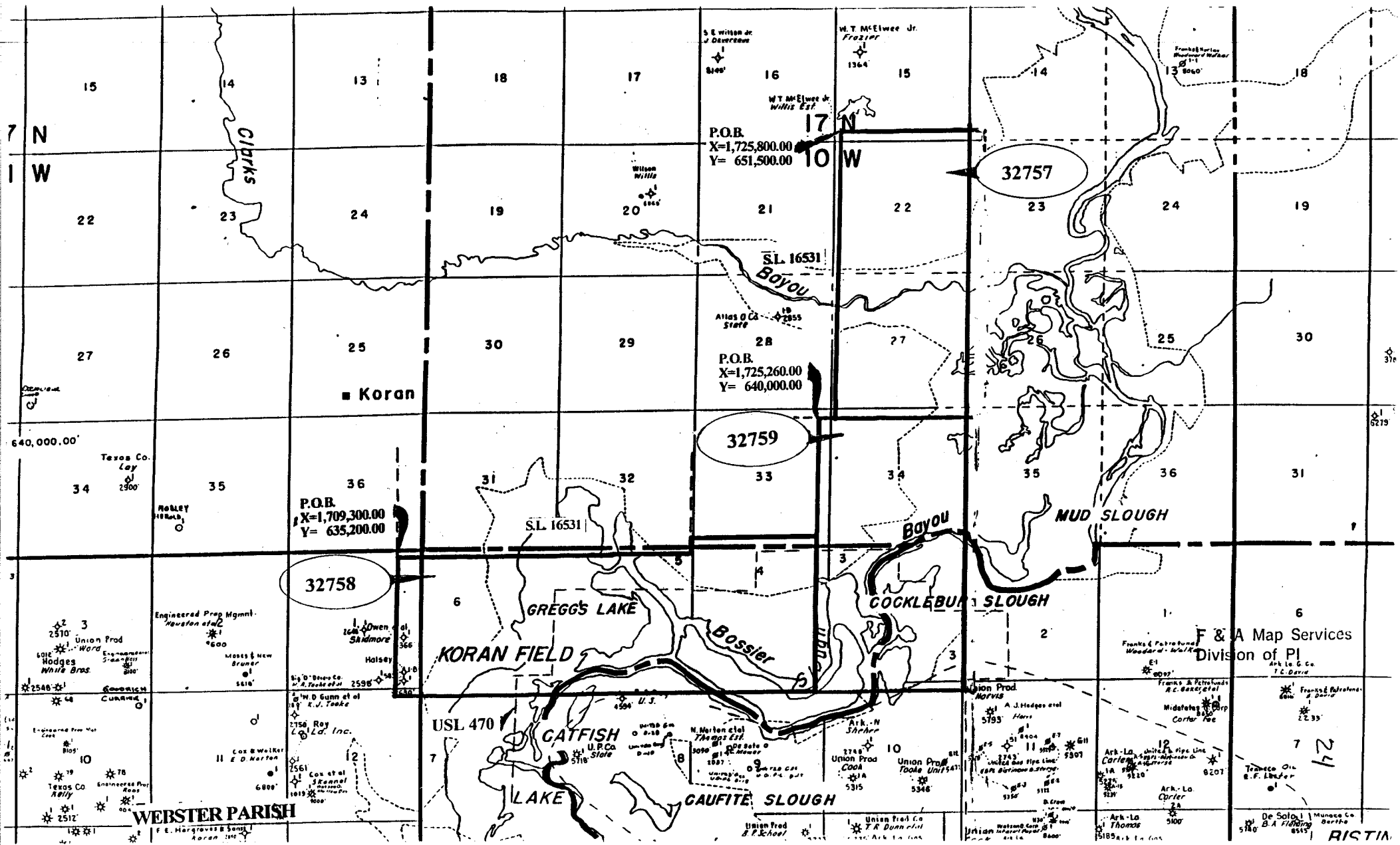


NOT TO BE USED WITH A PORTION BID
FOR INFORMATIONAL PURPOSES ONLY!

MAP NOT TO SCALE



TRACT 32757 - Webster Parish, Louisiana

All of the lands now or formerly constituting the beds and bottoms of all water bodies of every nature and description and all islands and other lands formed by accretion or reliction, except tax lands, owned by and not under mineral lease from the State of Louisiana on September 13, 2000, situated in Webster Parish, Louisiana, within the following described boundaries: Beginning at the Northeast corner of State Lease No. 16531 having Coordinates of X = 1,725,800.00 and Y = 651,500.00; thence South 11,500.00 feet on the Easternmost East line of said State Lease No. 16531 to its Northernmost Southeast corner having Coordinates of X = 1,725,800.00 and Y = 640,000.00; thence East 5,280.00 feet to a point having Coordinates of X = 1,731,080.00 and Y = 640,000.00; thence North 11,500.00 feet to a point having Coordinates of X = 1,731,080.00 and Y = 651,500.00; thence West 5,280.00 feet to the point of beginning, including all lands lying below the elevation of 148.60 feet, as established by the BLM, containing approximately 457 acres, as shown outlined in red on a plat on file in the Office of Mineral Resources, Department of Natural Resources. All bearings, distances and coordinates are based on Louisiana Coordinate System of 1927 (North Zone).

NOTE: This tract is in the vicinity of an area beneath which is located the Bistineau Gas Storage Pool in the Sligo formation of the Pettet Porosity. Accordingly, any mineral related activity, including, but not limited to, the exploration and drilling for, and the production and storage of oil, gas and other liquid or gaseous minerals, conducted under a valid mineral lease which may be obtained from the State, shall be subject to any statewide orders issued by the Louisiana Office of Conservation pertinent to conducting such operations in this area and upon this tract, including particularly, but not limited to, the following: Order Nos. 287, 287-A, 287-A-1, 287-B, Supplement to 287-B, 287-B-1, 287-B-2 and 287-B-3. The successful bidder on this tract shall contact the operator of the Bistineau Gas Storage Pool and the Office of Conservation prior to initiating and conducting any of the aforementioned activity hereon.

Applicant: Clark Energy Company, Inc.

Bidder	Cash Payment	Price / Acre	Rental	Oil	Gas	Other

P.O.B.
X=1,725,800.00
Y= 651,500.00

T 16 N - R 10 W

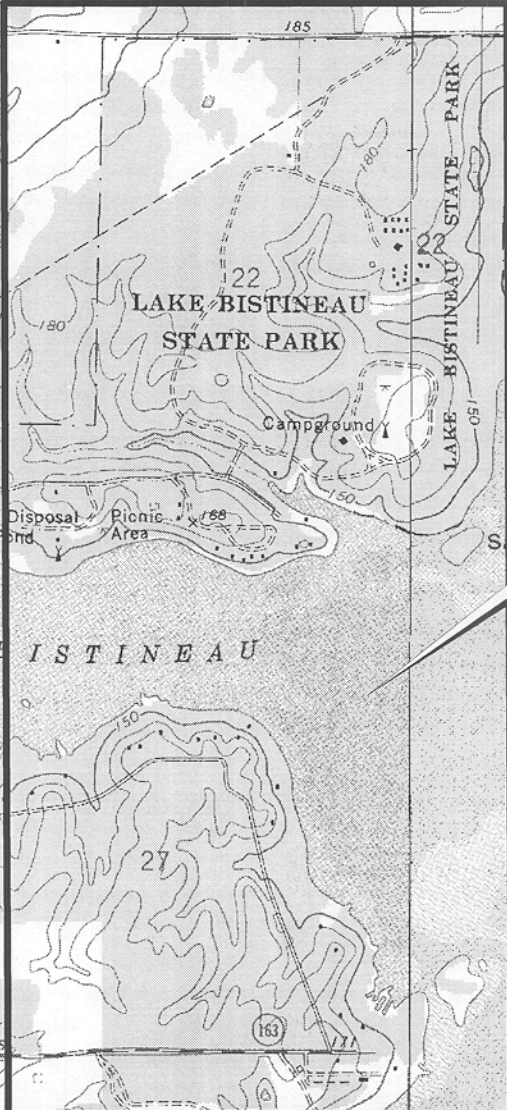


LAKE BISTINEAU STATE PARK

BM 183

S.L. 16531

TR 32757
457 +/- ACS.
SEPT., 2000



LAKE BISTINEAU STATE PARK

Campground

Snake Island

Gusta Point

Sewage Disposal Pond

Picnic Area

Sandy Island

LAKE BISTINEAU

L A K E

28

27

WT

163

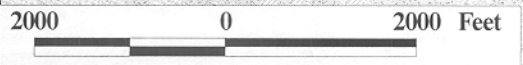
33

34

Plum Orchard Landing

OFFICIAL COPY
OFFICE OF MINERAL RESOURCES
DEPT. OF NATURAL RESOURCES
DO NOT REMOVE

WEBSTER PARISH



TRACT 32758 - Bienville, Bossier and Webster Parishes, Louisiana

All of the lands now or formerly constituting the beds and bottoms of all water bodies of every nature and description and all islands and other lands formed by accretion or reliction, except tax lands, owned by and not under mineral lease from the State of Louisiana on September 13, 2000, situated in Bienville, Bossier and Webster Parishes, Louisiana, within the following described boundaries: Beginning at the Southwest corner of State Lease No. 16531 having Coordinates of X = 1,709,300.00 and Y = 635,200.00; thence on the boundary of said State Lease No. 16531 the following courses: East 11,200.00 feet and North 540.00 feet to a point on its Westernmost East line having Coordinates of X = 1,720,500.00 and Y = 635,740.00; thence East 4,760.00 feet to a point having Coordinates of X = 1,725,260.00 and Y = 635,740.00; thence South 5,820.00 feet to a point having Coordinates of X = 1,725,260.00 and Y = 629,920.00; thence West 15,960.00 feet to a point having Coordinates of X = 1,709,300.00 and Y = 629,920.00; thence North 5,280.00 feet to the point of beginning, including all lands lying below the elevation of 148.60 feet, as established by the BLM and also as established in a boundary agreement dated April 16, 1955, **LESS AND EXCEPT** that portion of the nomination from the surface to 5530 feet located within the geographical boundary of the Underground Storage Lease No. 470, being the Bistineau Gas Storage Pool in the Sligo Formation, also known as the Pettit Formation, containing approximately 652 acres, as shown outlined in red on a plat on file in the Office of Mineral Resources, Department of Natural Resources. All bearings, distances and coordinates are based on Louisiana Coordinate System of 1927 (North Zone).

NOTE: This tract encompasses an area beneath which is located on the Bistineau Gas Storage Pool in the Sligo formation of the Pettit Porosity. Accordingly, any mineral related activity, including, but not limited to, the exploration and drilling for, and the production and storage of oil, gas and other liquid or gaseous minerals, conducted under a valid mineral lease which may be obtained from the State, shall be subject to any statewide orders issued by the Louisiana Office of Conservation pertinent to conducting such operations in this area and upon this tract, including particularly, but not limited to, the following: Order Nos. 287, 287-A, 287-A-1, 287-B, Supplement to 287-B, 287-B-1, 287-B-2 and 287-B-3. The successful bidder on this tract shall contact the operator of the Bistineau Gas Storage Pool and the Office of Conservation prior to initiating and conducting any of the aforementioned activity hereon.

Applicant: Clark Energy Company, Inc.

Bidder	Cash Payment	Price / Acre	Rental	Oil	Gas	Other

T17N-R10W

P.O.B.
X=1,709,300.00
Y= 635,200.00

S.L. 16531

WEBSTER PARISH

WEBSTER PARISH
BOSSIER PARISH

BOSSIER PARISH

USL 470

BOUNDARY AGREEMENT LINE

Fairview Point

BOUNDARY

BOSSIER PARISH
BIENVILLE PARISH

TR 32758
652 +/- ACS.
SEPT., 2000

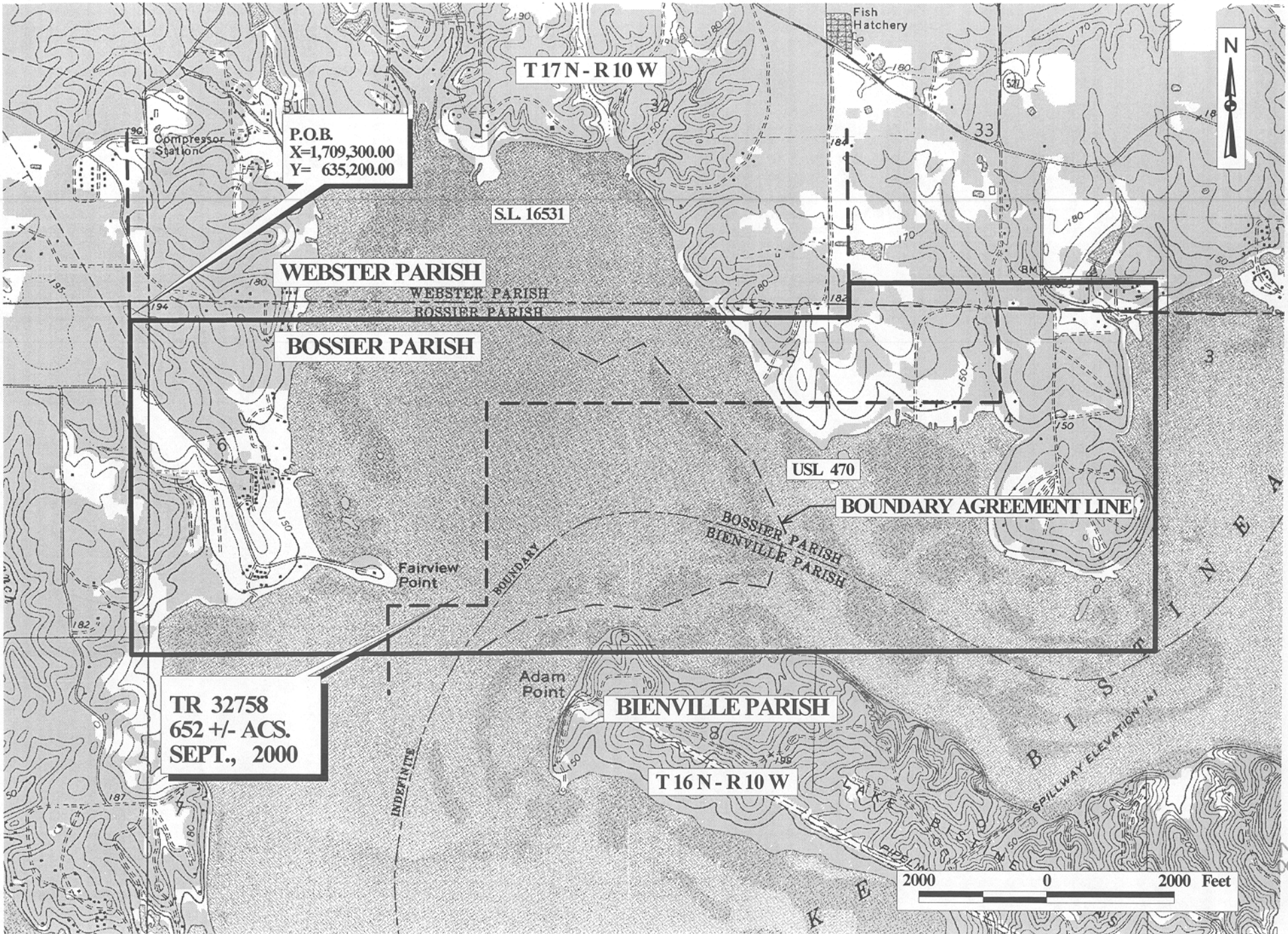
Adam Point

BIENVILLE PARISH

T16N-R10W

SPILLWAY ELEVATION 141

2000 0 2000 Feet



TRACT 32759 - Bienville, Bossier and Webster Parishes, Louisiana

All of the lands now or formerly constituting the beds and bottoms of all water bodies of every nature and description and all islands and other lands formed by accretion or reliction, except tax lands, owned by and not under mineral lease from the State of Louisiana on September 13, 2000, situated in Bienville, Bossier and Webster Parishes, Louisiana, within the following described boundaries: Beginning at a point on the Northernmost South line of State Lease No. 16531 having Coordinates of X = 1,725,260.00 and Y = 640,000.00; thence South 10,080.00 feet to a point having Coordinates of X = 1,725,260.00 and Y = 629,920.00; thence East 5,820.00 feet to a point having Coordinates of X = 1,731,080.00 and Y = 629,920.00; thence North 10,080.00 feet to a point having Coordinates of X = 1,731,080.00 and Y = 640,000.00; thence West 5,280.00 feet to the Northernmost Southeast corner of said State Lease No. 16531 having Coordinates of X = 1,725,800.00 and Y = 640,000.00; thence West 540.00 feet on the said Northernmost South line of said State Lease No. 16531 to the point of beginning, including all lands lying below the elevation of 148.60 feet, as established by the BLM, **LESS AND EXCEPT** that portion of the nomination from the surface to 5530 feet located within the geographical boundary of the Underground Storage Lease No. 470, being the Bistineau Gas Storage Pool in the Sligo Formation, also known as the Pettit Formation, containing approximately 914 acres, as shown outlined in red on a plat on file in the Office of Mineral Resources, Department of Natural Resources. All bearings, distances and coordinates are based on Louisiana Coordinate System of 1927 (North Zone).

NOTE: This tract encompasses an area beneath which is located on the Bistineau Gas Storage Pool in the Sligo formation of the Pettit Porosity. Accordingly, any mineral related activity, including, but not limited to, the exploration and drilling for, and the production and storage of oil, gas and other liquid or gaseous minerals, conducted under a valid mineral lease which may be obtained from the State, shall be subject to any statewide orders issued by the Louisiana Office of Conservation pertinent to conducting such operations in this area and upon this tract, including particularly, but not limited to, the following: Order Nos. 287, 287-A, 287-A-1, 287-B, Supplement to 287-B, 287-B-1, 287-B-2 and 287-B-3. The successful bidder on this tract shall contact the operator of the Bistineau Gas Storage Pool and the Office of Conservation prior to initiating and conducting any of the aforementioned activity hereon.

Applicant: Clark Energy Company, Inc.

Bidder	Cash Payment	Price / Acre	Rental	Oil	Gas	Other

B I S T I N E A U



28

S.L. 16531

27

163

sh
itchery

P.O.B.
X=1,725,260.00
Y= 640,000.00

Birds
Island

33

184

34

Plum Orchard
Landing

TR 32759
914 +/- ACS.
SEPT., 2000

T 17 N - R 10 W

WEBSTER PARISH

Plum Orchard
Island

BOSSIER PARISH

3

USL 470

BM 145

T 16 N - R 10 W

B O S S I E R
P A R I S H

B I E N V I L L E
P A R I S H

B I S T I N E A U
SPILLWAY ELEVATION 141

OFFICIAL COPY
OFFICE OF MINERAL RESOURCES
DEPT. OF NATURAL RESOURCES
DO NOT REMOVE

PIPELINE

X216

10

10

LAKE BISTINEAU

2000 0 2000 Feet