

TRACT 32800 - PORTION OF BLOCK 53, MAIN PASS AREA, REVISED, Plaquemines Parish, Louisiana

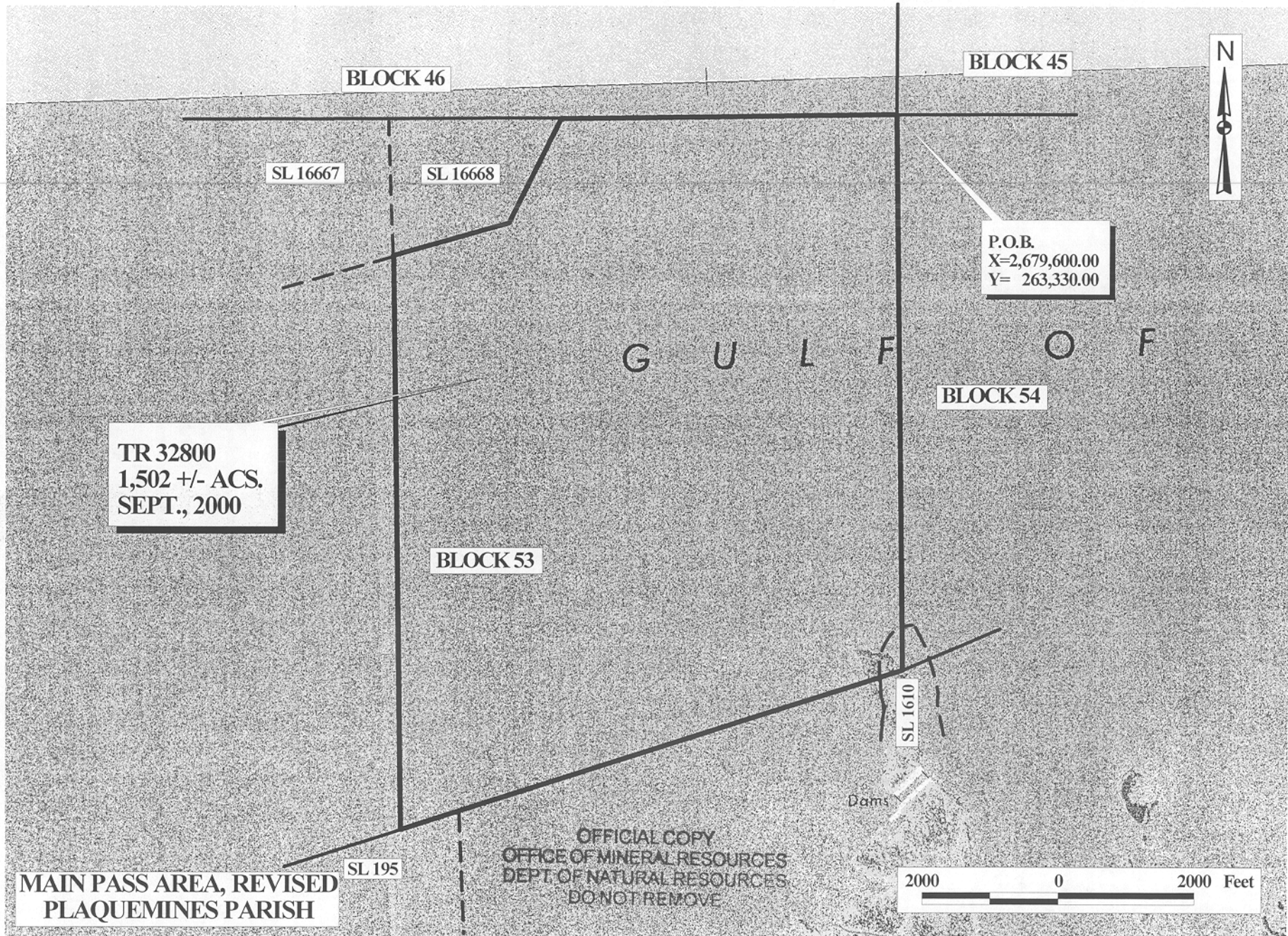
All of the lands now or formerly constituting the beds and bottoms of all water bodies of every nature and description and all islands and other lands formed by accretion or reliction, except tax lands, belonging to the State of Louisiana and not under mineral lease on September 13, 2000, situated in Plaquemines Parish, Louisiana, and more particularly described as follows: Beginning at the Northeast corner of Block 53, Main Pass Area, Revised, having Coordinates of X = 2,679,600.00 and Y = 263,330.00; thence South approximately 8,230 feet along the East line of said Block 53 to its Southeast corner having a Coordinate of X = 2,679,600.00; thence Southwesterly approximately 7,000 feet along the Southern boundary of said Block 53 to the most Easterly Northeast corner of State Lease No. 195, as amended; thence Southwesterly approximately 720 feet along the Southern boundary of said Block 53, also being the Northern boundary of said State Lease No. 195 to a point having a Coordinate of X = 2,672,225; thence North approximately 8,500 feet to the Southwest corner of State Lease No. 16668, also being the Southeast corner of State Lease No. 16667 having Coordinates of X = 2,672,225.00 and Y = 261,344.94; thence on the boundary of said State Lease No. 16668 the following courses: North 74 degrees 56 minutes 32 seconds East 1,750.09 feet and North 27 degrees 02 minutes 47 seconds East 1,718.32 feet to its Northeast corner on the North line of said Block 53 having Coordinates of X = 2,674,696.34 and Y = 263,330.00; thence East 4,903.66 feet on the North line of said Block 53 to the point of beginning, **LESS AND EXCEPT**, if any, that portion of State Lease No. 195, as amended, and State Lease No. 1610 that may lie within the above described tract, containing approximately 1,502 acres, as shown outlined in red on a plat on file in the Office of Mineral Resources, Department of Natural Resources. All bearings, distances and coordinates are based on Louisiana Coordinate System of 1927 (South Zone).

NOTE: The above tract is located in or near an oyster restricted area and all operations in such area must be conducted in strict conformity with the stipulations and/or regulations of the Louisiana Department of Wildlife and Fisheries.

NOTE: The State of Louisiana does hereby reserve, and this lease shall be subject to, the imprescriptible right of surface use in the nature of a servitude in favor of the Department of Natural Resources, including its Offices and Commissions, for the sole purpose of implementing, constructing, servicing and maintaining approved coastal zone management and/or restoration projects. Utilization of any and all rights derived under this lease by the mineral lessee, its agents, successors or assigns, shall not interfere with nor hinder the reasonable surface use by the Department of Natural Resources, its Offices or Commissions, as hereinabove reserved.

Applicant: Robert A. Schroeder, Inc.

Bidder	Cash Payment	Price / Acre	Rental	Oil	Gas	Other



126

TRACT 32801 - PORTION OF BLOCK 46, MAIN PASS AREA, REVISED, Plaquemines Parish, Louisiana

All of the lands now or formerly constituting the beds and bottoms of all water bodies of every nature and description and all islands and other lands formed by accretion or reliction, except tax lands, belonging to the State of Louisiana and not under mineral lease on September 13, 2000, situated in Plaquemines Parish, Louisiana, and more particularly described as follows: Beginning at the Southeast corner of Block 46, Main Pass Area, Revised, having Coordinates of X = 2,679,600.00 and Y = 263,330.00; thence West 4,903.66 feet on the South line of said Block 46 to the Southeast corner of State Lease No. 16663 having Coordinates of X = 2,674,696.34 and Y = 263,330.00; thence on the East boundary of said State Lease No. 16663 the following courses: North 27 degrees 02 minutes 48 seconds East 1,373.74 feet and North 13 degrees 51 minutes 19 seconds West 192.34 feet to its Northeast corner on the Southern boundary of the Southeastern portion of State Lease No. 2726, as amended, having Coordinates of X = 2,675,321.00 and Y = 264,553.00; thence on the Southern boundary of the said Southeastern portion of said State Lease No. 2726 the following courses: Southeasterly, Northeasterly, Southeasterly and Northeasterly to its Southeast corner on the East line of said Block 46 having Coordinates of X = 2,679,600.00 and Y = 267,420.00; thence South 4,090.00 feet on the East line of said Block 46 to the point of beginning, containing approximately 300.15 acres, as shown outlined in red on a plat on file in the Office of Mineral Resources, Department of Natural Resources. All bearings, distances and coordinates are based on Louisiana Coordinate System of 1927 (South Zone).

NOTE: The State of Louisiana does hereby reserve, and this lease shall be subject to, the imprescriptible right of surface use in the nature of a servitude in favor of the Department of Natural Resources, including its Offices and Commissions, for the sole purpose of implementing, constructing, servicing and maintaining approved coastal zone management and/or restoration projects. Utilization of any and all rights derived under this lease by the mineral lessee, its agents, successors or assigns, shall not interfere with nor hinder the reasonable surface use by the Department of Natural Resources, its Offices or Commissions, as hereinabove reserved.

Applicant: Robert A. Schroeder, Inc.

Bidder	Cash Payment	Price / Acre	Rental	Oil	Gas	Other



FIELD

Platform

Platform

Platform

BLK. 45

OIL

BLK. 46

TR 32801
300.15 +/- ACS.
SEPT., 2000

S.L. 2726

S.L. 16663

P.O.B.
X= 2,679,600.00
Y= 263,330.00

G U L F O F M

MAIN PASS AREA, REVISED
PLAQUEMINES PARISH

OFFICIAL COPY
OFFICE OF MINERAL RESOURCES
DEPT. OF NATURAL RESOURCES
DO NOT REMOVE



128