

TRACT 32795 - PORTION OF BLOCK 46, MAIN PASS AREA, REVISED, Plaquemines Parish, Louisiana

All of the lands now or formerly constituting the beds and bottoms of all water bodies of every nature and description and all islands and other lands formed by accretion or reliction, except tax lands, belonging to the State of Louisiana and not under mineral lease on September 13, 2000, situated in Plaquemines Parish, Louisiana, and more particularly described as follows: Beginning at the Northeast corner of Block 46, Main Pass Area, Revised, having Coordinates of X = 2,679,600.00 and Y = 278,080.00; thence South 8,220.26 feet on the East line of said Block 46 to the Northeast corner of the Southeast portion of State Lease No. 2726, as amended, having Coordinates of X = 2,679,600.00 and Y = 269,859.74; thence Northwesterly and Southwesterly on the North boundary of the Southeast portion of said State Lease No. 2726 to a point on the East boundary of State Lease No. 16661 having Coordinates of X = 2,672,225.00 and Y = 269,856.27; thence North 1,003.28 feet on the East boundary of said State Lease No. 16661 to its Northeast corner having Coordinates of X = 2,672,225.00 and Y = 270,859.55; thence North 2,880.45 feet to the Southwest corner of the Northeast portion of said State Lease No. 2726 having Coordinates of X = 2,672,225.00 and Y = 273,680.00; thence Southeasterly, Northeasterly and Northwesterly on the boundary of the Northeast portion of said State Lease No. 2726 to its Northeast corner, also being a point on the North line of said Block 46 having Coordinates of X = 2,673,575.00 and Y = 278,080.00; thence East 6,025.00 feet on the North line of said Block 46 to the point of beginning, containing approximately 674.37 acres, as shown outlined in red on a plat on file in the Office of Mineral Resources, Department of Natural Resources. All bearings, distances and coordinates are based on Louisiana Coordinate System of 1927 (South Zone).

NOTE: The State of Louisiana does hereby reserve, and this lease shall be subject to, the imprescriptible right of surface use in the nature of a servitude in favor of the Department of Natural Resources, including its Offices and Commissions, for the sole purpose of implementing, constructing, servicing and maintaining approved coastal zone management and/or restoration projects. Utilization of any and all rights derived under this lease by the mineral lessee, its agents, successors or assigns, shall not interfere with nor hinder the reasonable surface use by the Department of Natural Resources, its Offices or Commissions, as hereinabove reserved.

Applicant: Robert A. Schroeder, Inc.

Bidder	Cash Payment	Price / Acre	Rental	Oil	Gas	Other



BLOCK 51

BLOCK 52

Oil Well

Oil Well

SL 2726

P.O.B.
X=2,679,600.00
Y= 278,080.00

TR 32795
674.37 +/- ACS.
SEPT., 2000

BLOCK 46

BLOCK 45

SL 2726

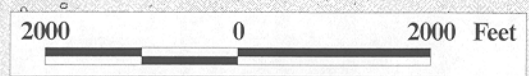
Platform

Platform

SL 16661

MAIN PASS AREA, REVISED
PLAQUEMINES PARISH

OFFICIAL COPY
OFFICE OF MINERAL RESOURCES
DEPT. OF NATURAL RESOURCES
DO NOT REMOVE



TRACT 32796 - PORTION OF BLOCK 45, MAIN PASS AREA, REVISED, Plaquemines Parish, Louisiana

All of the lands now or formerly constituting the beds and bottoms of all water bodies of every nature and description and all islands and other lands formed by accretion or reliction, except tax lands, belonging to the State of Louisiana and not under mineral lease on September 13, 2000, situated in Plaquemines Parish, Louisiana, and more particularly described as follows: Beginning at the Southwest corner of Block 45, Main Pass Area, Revised, having Coordinates of X = 2,679,600.00 and Y = 263,330.00; thence North 4,090.00 feet along the West line of said Block 45 to the Southwest corner of State Lease No. 11853; thence along the Southern and Northern boundaries of said State Lease No. 11853 the following courses: Northeasterly, Northwesterly, Southwesterly and Northwesterly to the Northwest corner of said State Lease No. 11853 which lies on the West line of said Block 45 having Coordinates of X = 2,679,600.00 and Y = 269,859.74; thence North 8,220.26 feet along the West line of said Block 45 to its Northwest corner having Coordinates of X = 2,679,600.00 and Y = 278,080.00; thence East 7,375.00 feet along the North line of said Block 45 to a point having Coordinates of X = 2,686,975.00 and Y = 278,080.00; thence South 14,750.00 feet to a point on the South line of said Block 45 having Coordinates of X = 2,686,975.00 and Y = 263,330.00; thence West 7,375.00 feet along the South line of said Block 45 to the point of beginning, containing approximately **2,414.31 acres**, as shown outlined in red on a plat on file in the Office of Mineral Resources, Department of Natural Resources. All bearings, distances and coordinates are based on Louisiana Coordinate System of 1927 (South Zone).

NOTE: The State of Louisiana does hereby reserve, and this lease shall be subject to, the imprescriptible right of surface use in the nature of a servitude in favor of the Department of Natural Resources, including its Offices and Commissions, for the sole purpose of implementing, constructing, servicing and maintaining approved coastal zone management and/or restoration projects. Utilization of any and all rights derived under this lease by the mineral lessee, its agents, successors or assigns, shall not interfere with nor hinder the reasonable surface use by the Department of Natural Resources, its Offices or Commissions, as hereinabove reserved.

Applicant: Robert A. Schroeder, Inc.

Bidder	Cash Payment	Price / Acre	Rental	Oil	Gas	Other



BLK. 51 BLK. 52

BLK. 46

BLK. 45

G U L F

TR 32796
2,414.31 +/- ACS.
SEPT., 2000

FIELD

OIL

SL 11853

P.O.B.
X=2,679,600.00
Y= 263,330.00

BLK. 53

BLK. 54

OFFICIAL COPY
OFFICE OF MINERAL RESOURCES
DEPT. OF NATURAL RESOURCES
DO NOT REMOVE

G U L F O F M E X I C O

MAIN PASS AREA, REVISED
PLAQUEMINES PARISH



TRACT 32797 - PORTION OF BLOCK 52, MAIN PASS AREA, REVISED, Plaquemines Parish, Louisiana

All of the lands now or formerly constituting the beds and bottoms of all water bodies of every nature and description and all islands and other lands formed by accretion or reliction, except tax lands, belonging to the State of Louisiana and not under mineral lease on September 13, 2000, situated in Plaquemines Parish, Louisiana, and more particularly described as follows: Beginning at the Northeast corner of Block 52, Main Pass Area, Revised, also being the Northernmost point of State Lease No. 16666 having Coordinates of X = 2,664,850.00 and Y = 266,080.00; thence on the boundary of said State Lease No. 16666 the following courses: South 51 degrees 14 minutes 39 seconds West 1,632.42 feet, South 19 degrees 56 minutes 32 seconds West 4,362.70 feet and South 81 degrees 23 minutes 08 seconds East 2,792.50 feet to its Southeast corner on the East line of said Block 52 having Coordinates of X = 2,664,850.00 and Y = 260,538.73; thence South 1,708.73 feet on the East line of said Block 52 to a point having Coordinates of X = 2,664,850.00 and Y = 258,830.00; thence Northwesterly approximately 12,000 feet to a point on the Southern boundary of said Block 52, also being a point on the Northern boundary of State Lease No. 195, Grand Bay Area, as amended; thence Southwesterly approximately 240 feet on the said Southern boundary of said Block 52 and the said Northern boundary of said State Lease No. 195 to the intersection of a North-South line having a Coordinate of X = 2,652,750.00, also being the Southeast corner of State Lease No. 14646; thence North approximately 1,443 feet on the East line of said State Lease No. 14646 to the Southwest corner of State Lease No. 16665 having Coordinates of X = 2,652,750.00 and Y = 261,832.48; thence on the boundary of said State Lease No. 16665 the following courses: North 82 degrees 10 minutes 43 seconds East 2,079.31 feet, North 11 degrees 29 minutes 45 seconds West 1,766.23 feet and South 88 degrees 05 minutes 02 seconds West 1,704.95 feet to its Northwest corner on the East line of said State Lease No. 14646 having Coordinates of X = 2,652,750.00 and Y = 263,788.69; thence North 1,067.47 feet on the East line of said State Lease No. 14646 to the Northernmost Southwest corner of State Lease No. 16664 having Coordinates of X = 2,652,750.00 and Y = 264,856.16; thence on the boundary of said State Lease No. 16664 the following courses: North 87 degrees 38 minutes 44 seconds East 3,961.34 feet, South 02 degrees 59 minutes 38 seconds East 3,752.82 feet, North 71 degrees 05 minutes 36 seconds East 5,863.35 feet and North 03 degrees 23 minutes 02 seconds West 2,913.98 feet to its Northeast corner on the North line of said Block 52 having Coordinates of X = 2,662,279.00 and Y = 266,080.00; thence East 2,571.00 feet on the North line of said Block 52 to the point of beginning, **LESS AND EXCEPT**, if any, that portion of State Lease No. 195, as amended, that may lie within the above described tract, containing approximately 891 acres, as shown outlined in red on a plat on file in the Office of Mineral Resources, Department of Natural Resources. All bearings, distances and coordinates are based on Louisiana Coordinate System of 1927 (South Zone).

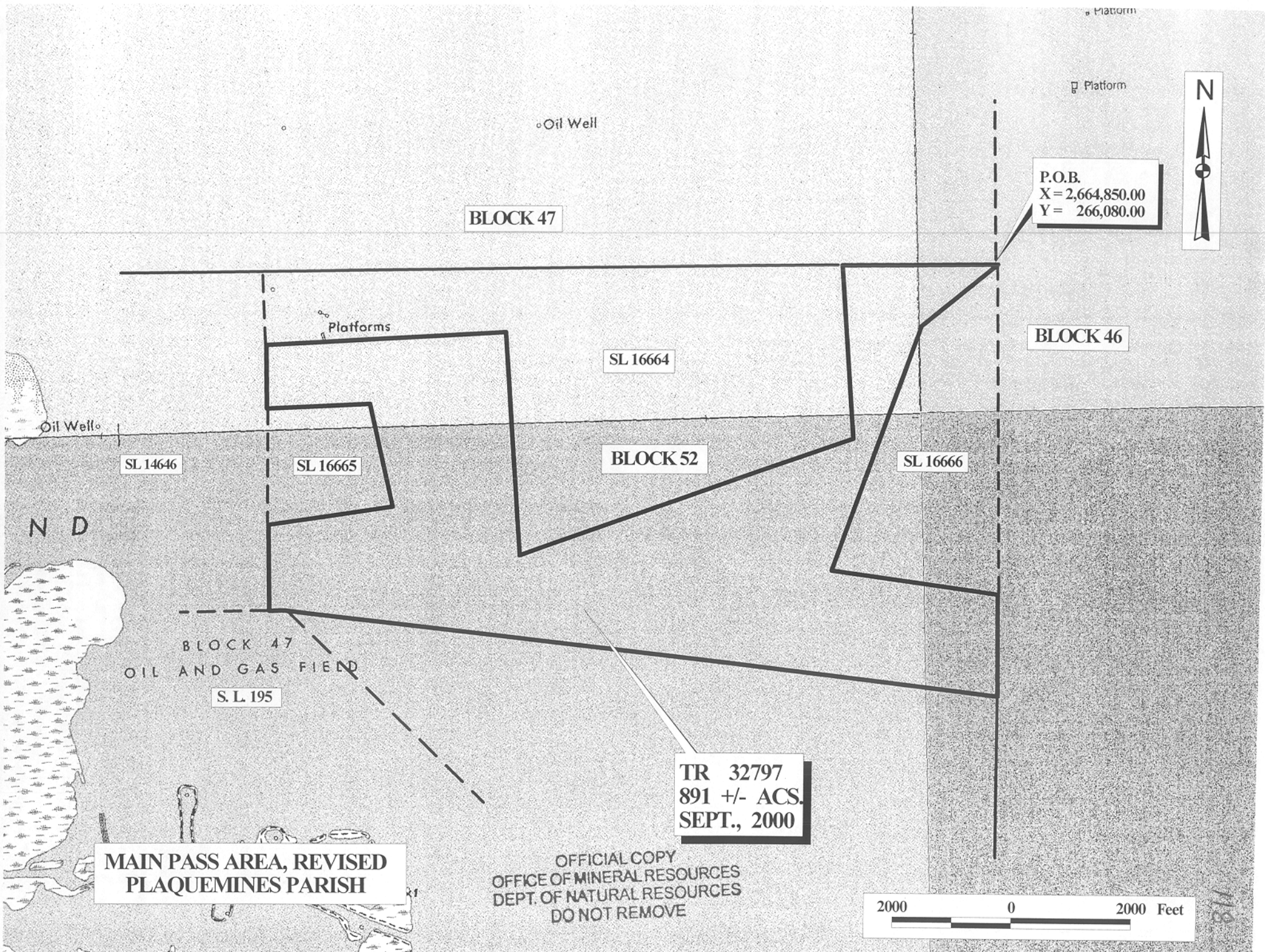
NOTE: The above tract is located in or near an oyster restricted area and all operations in such area must be conducted in strict conformity with the stipulations and/or regulations of the Louisiana Department of Wildlife and Fisheries.

NOTE: The State of Louisiana does hereby reserve, and this lease shall be subject to, the imprescriptible right of surface use in the nature of a servitude in favor of the Department of Natural Resources, including its Offices and Commissions, for the sole purpose of

implementing, constructing, servicing and maintaining approved coastal zone management and/or restoration projects. Utilization of any and all rights derived under this lease by the mineral lessee, its agents, successors or assigns, shall not interfere with nor hinder the reasonable surface use by the Department of Natural Resources, its Offices or Commissions, as hereinabove reserved.

Applicant: Robert A. Schroeder, Inc.

Bidder	Cash Payment	Price / Acre	Rental	Oil	Gas	Other



BLOCK 47

P.O.B.
X = 2,664,850.00
Y = 266,080.00



BLOCK 46

SL 16664

BLOCK 52

SL 16666

SL 14646

SL 16665

BLOCK 47
OIL AND GAS FIELD
S. L. 195

TR 32797
891 +/- ACS.
SEPT., 2000

MAIN PASS AREA, REVISED
PLAQUEMINES PARISH

OFFICIAL COPY
OFFICE OF MINERAL RESOURCES
DEPT. OF NATURAL RESOURCES
DO NOT REMOVE



118