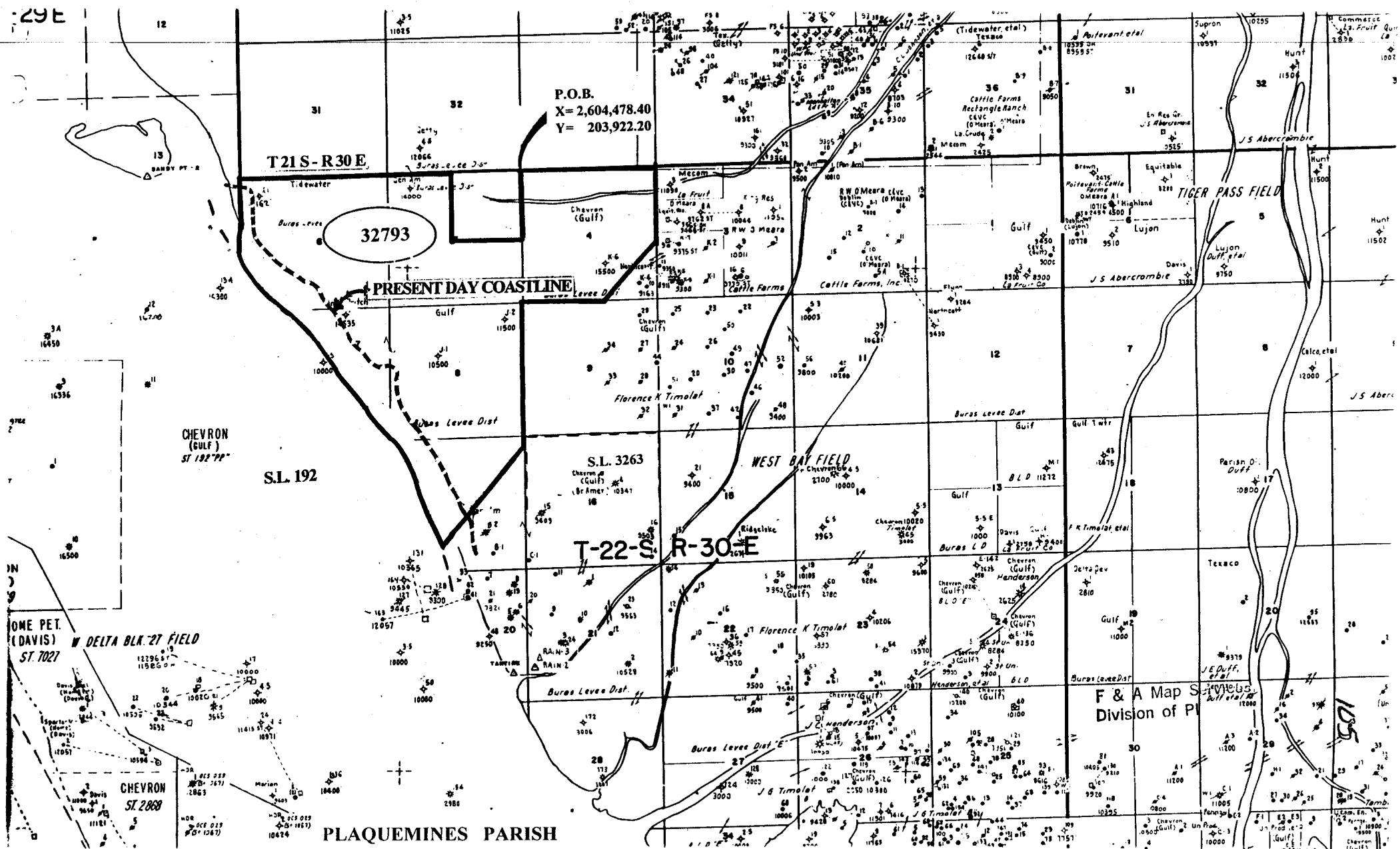


NOT TO BE USED WITH A PORTION BID
FOR INFORMATIONAL PURPOSES ONLY!

MAP NOT TO SCALE



TRACT 32793 - Plaquemines Parish, Louisiana

All of the lands now or formerly constituting the beds and bottoms of all water bodies of every nature and description and all islands and other lands formed by accretion or reliction, except tax lands, owned by and not under mineral lease from the State of Louisiana on September 13, 2000, situated in Plaquemines Parish, Louisiana, within the following described boundaries: Beginning at a point having Coordinates of X = 2,604,478.40 and Y = 203,922.20; thence North 88 degrees 16 minutes 08 seconds East 5,280.01 feet to a point having Coordinates of X = 2,609,756.00 and Y = 204,081.70; thence South 01 degrees 43 minutes 52 seconds East 3,042.28 feet to a point having Coordinates of X = 2,609,847.90 and Y = 201,040.81; thence South 39 degrees 19 minutes 23 seconds West 2,967.46 feet to a point having Coordinates of X = 2,607,967.44 and Y = 198,745.23; thence South 88 degrees 16 minutes 08 seconds West 3,331.06 feet to a point having Coordinates of X = 2,604,637.90 and Y = 198,644.60; thence South 01 degrees 45 minutes 23 seconds East 5,277.50 feet to the Northwest corner of State Lease No. 3263 having Coordinates of X = 2,604,799.66 and Y = 193,369.58; thence South 01 degrees 43 minutes 30 seconds East 884.65 feet along the West boundary of said State Lease No. 3263 to a point having Coordinates of X = 2,604,825.09 and Y = 192,525.31; thence South 36 degrees 54 minutes 57 seconds West approximately 4,250 feet to a point on the Eastern boundary of State Lease No. 192, as amended; thence Northwesterly approximately 14,050 feet along the Eastern boundary of said State Lease No. 192 to a point of intersection with a line bearing South 01 degrees 22 minutes 12 seconds East extended from a point having Coordinates of X = 2,593,992.04 and Y = 203,477.02; thence North 01 degrees 22 minutes 12 seconds West approximately 2,950 feet along said line to said point having Coordinates of X = 2,593,992.04 and Y = 203,477.02; thence North 86 degrees 51 minutes 39 seconds East 5,216.59 feet to a point having Coordinates of X = 2,599,200.80 and Y = 203,762.70; thence North 88 degrees 16 minutes 08 seconds East 2,640.00 feet to a point having Coordinates of X = 2,601,839.60 and Y = 203,842.45; thence South 01 degrees 43 minutes 52 seconds East 2,640.00 feet to a point having Coordinates of X = 2,601,919.35 and Y = 201,203.65; thence North 88 degrees 16 minutes 08 seconds East 2,640.00 feet to a point having Coordinates of X = 2,604,558.15 and Y = 201,283.40; thence North 01 degrees 43 minutes 52 seconds West 2,640.00 feet to the point of beginning, **LESS AND EXCEPT** all those portions of State Lease No. 192, as amended, that may lie within the above described tract, containing approximately **434 acres**, as shown outlined in red on a plat on file in the Office of Mineral Resources, Department of Natural Resources. All bearings, distances and coordinates are based on Louisiana Coordinate System of 1927 (South Zone).

NOTE: The above tract is located in or near an oyster restricted area and all operations in such area must be conducted in strict conformity with the stipulations and/or regulations of the Louisiana Department of Wildlife and Fisheries.

NOTE: The State of Louisiana does hereby reserve, and this lease shall be subject to, the imprescriptible right of surface use in the nature of a servitude in favor of the Department of Natural Resources, including its Offices and Commissions, for the sole purpose of implementing, constructing, servicing and maintaining approved coastal zone management and/or restoration projects. Utilization of any and all rights derived under this lease by the mineral lessee, its agents, successors or assigns, shall not interfere with nor hinder the reasonable surface use by the Department of Natural

Resources, its Offices or Commissions, as hereinabove reserved.

Applicant: Jade Properties, Inc.

Bidder	Cash Payment	Price / Acre	Rental	Oil	Gas	Other

T21 S - R30 E

T22 S - R30 E

RED

PASS

P.O.B.
X=2,604,478.40
Y= 203,922.20

PRESENT DAY COASTLINE

TR 32793
434 +/- ACS.
SEPT., 2000

S.L. 192

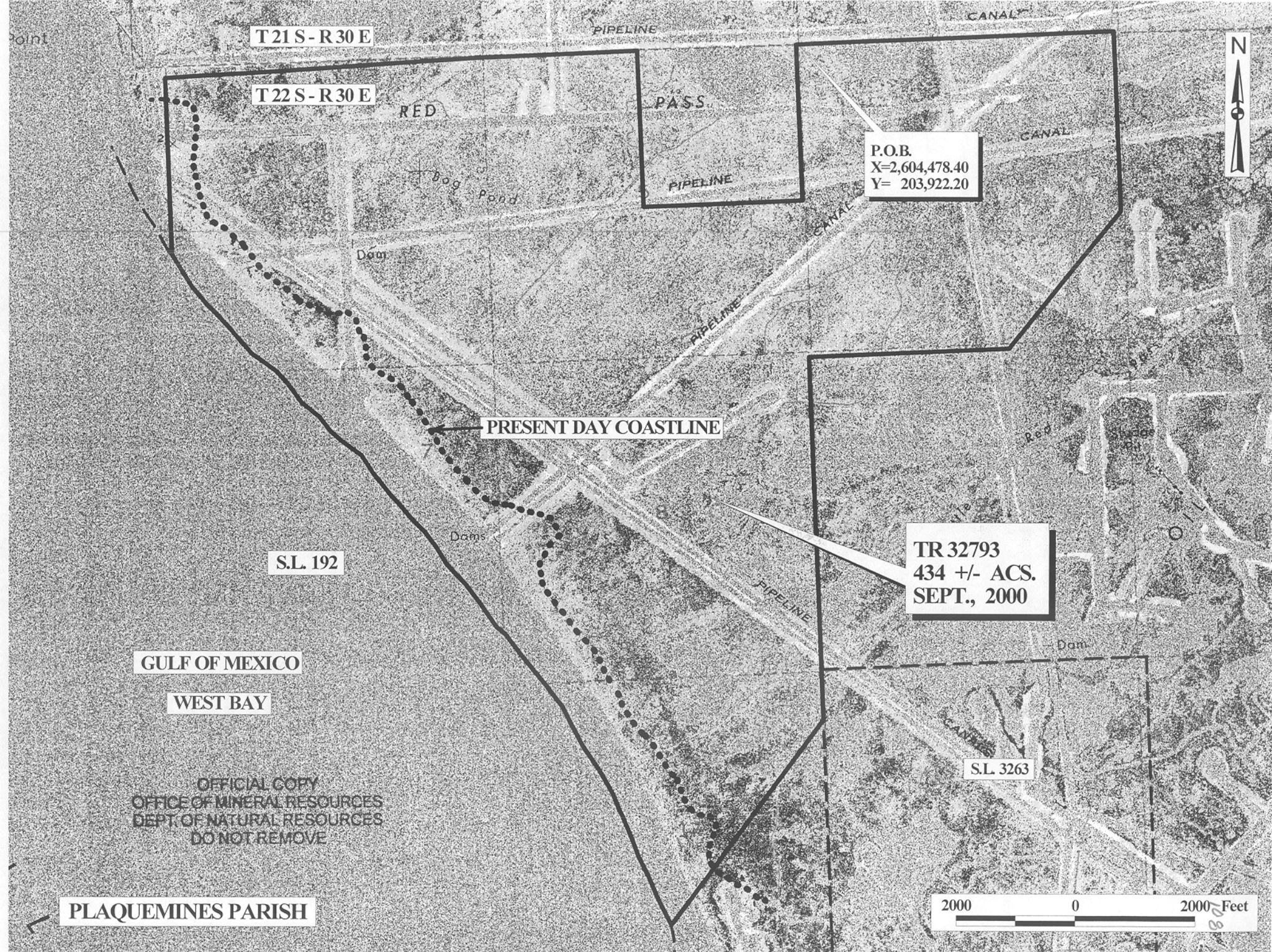
S.L. 3263

GULF OF MEXICO

WEST BAY

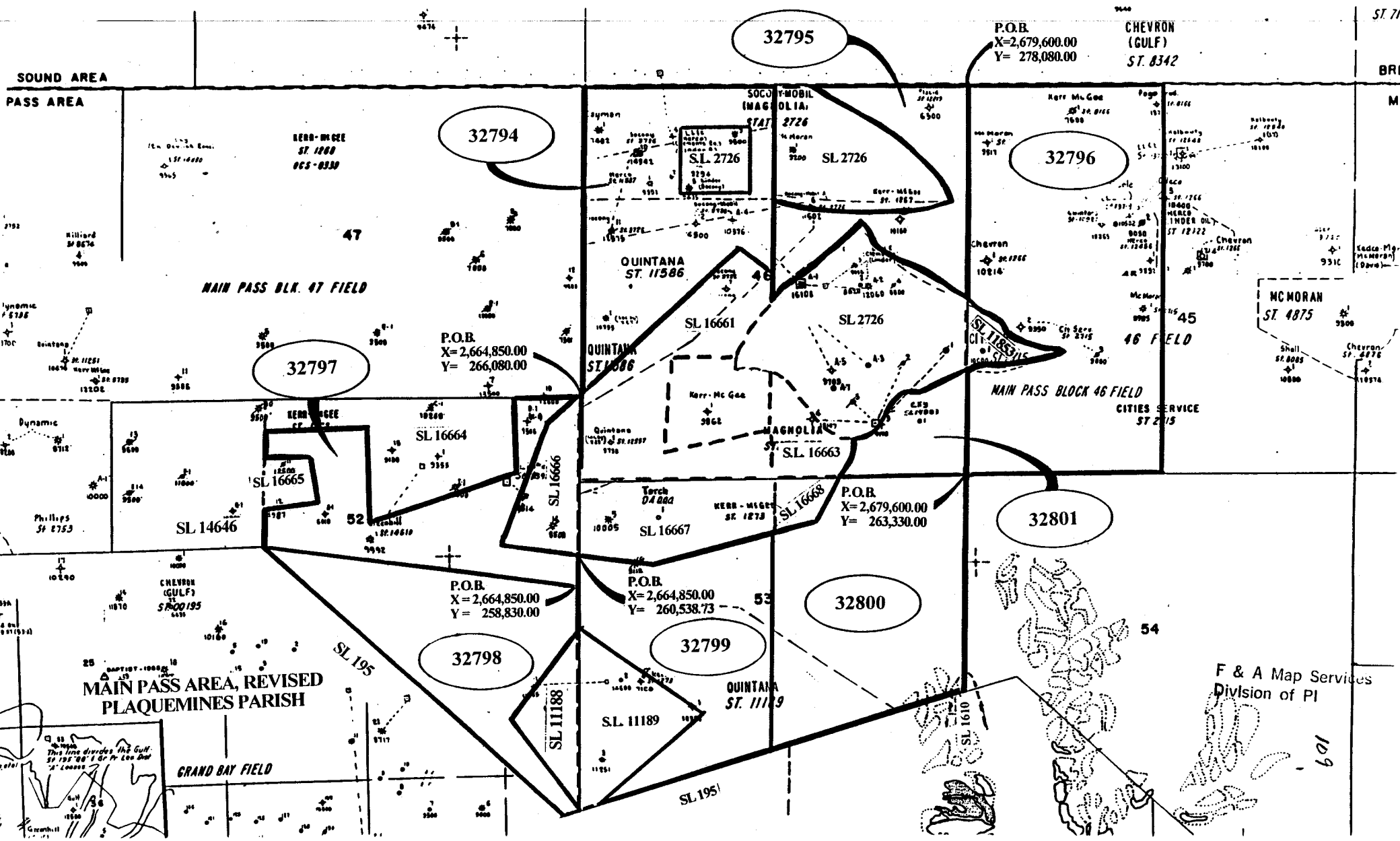
OFFICIAL COPY
OFFICE OF MINERAL RESOURCES
DEPT. OF NATURAL RESOURCES
DO NOT REMOVE

PLAQUEMINES PARISH



NOT TO BE USED WITH A PORTION BID
FOR INFORMATIONAL PURPOSES ONLY!

MAP NOT TO SCALE



MAIN PASS AREA, REVISED
PLAQUEMINES PARISH

GRAND BAY FIELD

F & A Map Services
Division of PI

109

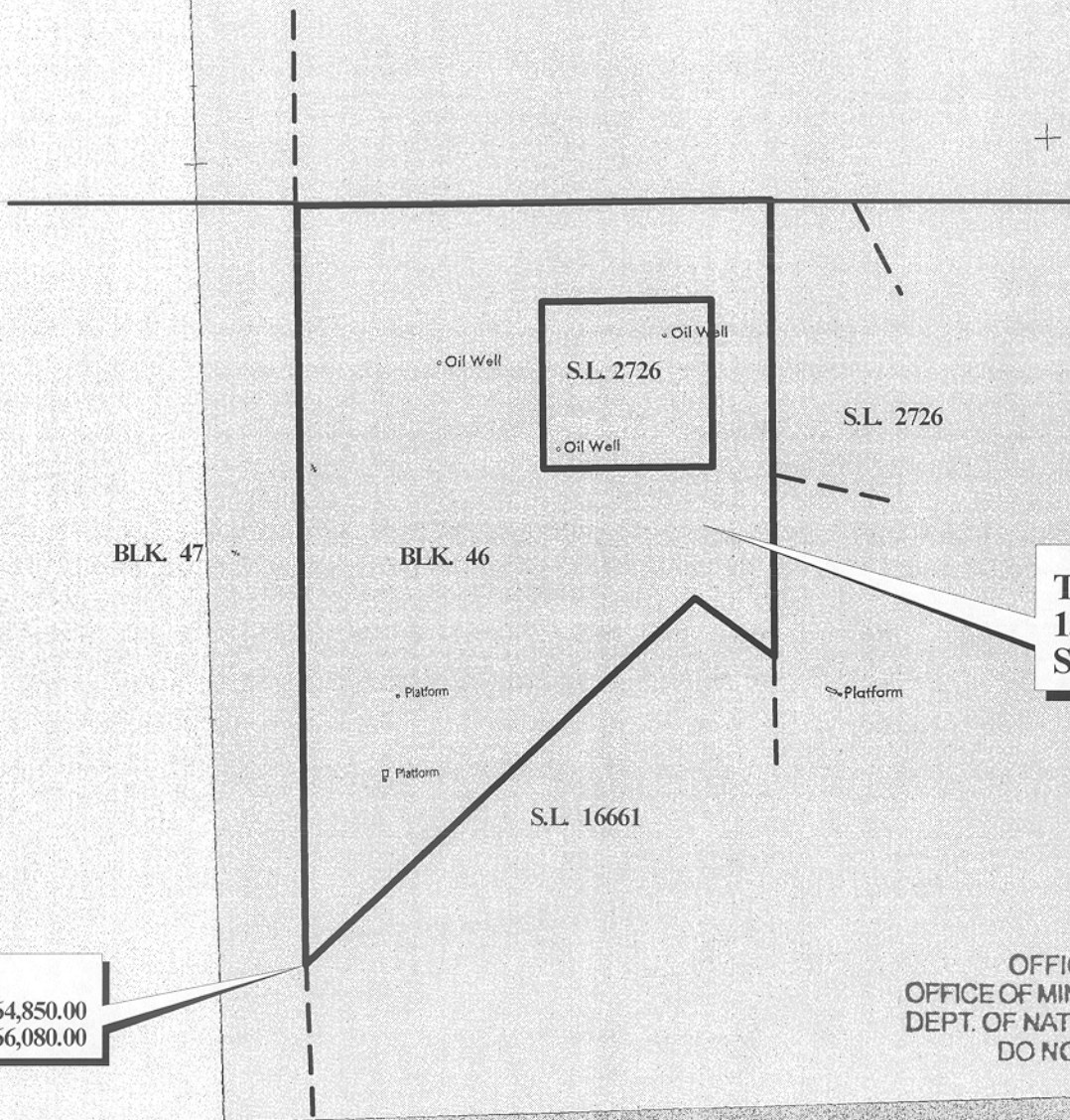
TRACT 32794 - PORTION OF BLOCK 46, MAIN PASS AREA, REVISED, Plaquemines Parish, Louisiana

All of the lands now or formerly constituting the beds and bottoms of all water bodies of every nature and description and all islands and other lands formed by accretion or reliction, except tax lands, belonging to the State of Louisiana and not under mineral lease on September 13, 2000, situated in Plaquemines Parish, Louisiana, and more particularly described as follows: Beginning at a point on the West line of Block 46, Main Pass Area, Revised, being the Northwest corner of State Lease No. 16661 having Coordinates of X = 2,664,850.00 and Y = 266,080.00; thence North 12,000.00 feet on the West line of said Block 46 to its Northwest corner having Coordinates of X = 2,664,850.00 and Y = 278,080.00; thence East 7,375.00 feet on the North line of said Block 46 to the Northwest corner of the Northeast portion of State Lease No. 2726, as amended, having Coordinates of X = 2,672,225.00 and Y = 278,080.00; thence South 4,400.00 feet on the West boundary of the Northeast portion of said State Lease No. 2726 to its Southwest corner having Coordinates of X = 2,672,225.00 and Y = 273,680.00; thence South 2,820.45 feet to the Northeast corner of said State Lease No. 16661 having Coordinates of X = 2,672,225.00 and Y = 270,859.55; thence on the Northern boundary of said State Lease No. 16661 the following courses: North 52 degrees 35 minutes 09 seconds West 1,549.86 feet and South 47 degrees 02 minutes 27 seconds West 8,395.29 feet to the point of beginning, **LESS AND EXCEPT** the Northwest portion of State Lease No. 2726, as amended, which falls entirely within the above described tract, containing approximately **1,319.83 acres**, as shown outlined in red on a plat on file in the Office of Mineral Resources, Department of Natural Resources. All bearings, distances and coordinates are based on Louisiana Coordinate System of 1927 (South Zone).

NOTE: The State of Louisiana does hereby reserve, and this lease shall be subject to, the imprescriptible right of surface use in the nature of a servitude in favor of the Department of Natural Resources, including its Offices and Commissions, for the sole purpose of implementing, constructing, servicing and maintaining approved coastal zone management and/or restoration projects. Utilization of any and all rights derived under this lease by the mineral lessee, its agents, successors or assigns, shall not interfere with nor hinder the reasonable surface use by the Department of Natural Resources, its Offices or Commissions, as hereinabove reserved.

Applicant: Robert A. Schroeder, Inc.

Bidder	Cash Payment	Price / Acre	Rental	Oil	Gas	Other



TR 32794
1319.83 +/- ACS.
SEPT., 2000

P.O.B.
X= 2,664,850.00
Y= 266,080.00

OFFICIAL COPY
OFFICE OF MINERAL RESOURCES
DEPT. OF NATURAL RESOURCES
DO NOT REMOVE

MAIN PASS AREA, REVISED
PLAQUEMINES PARISH

