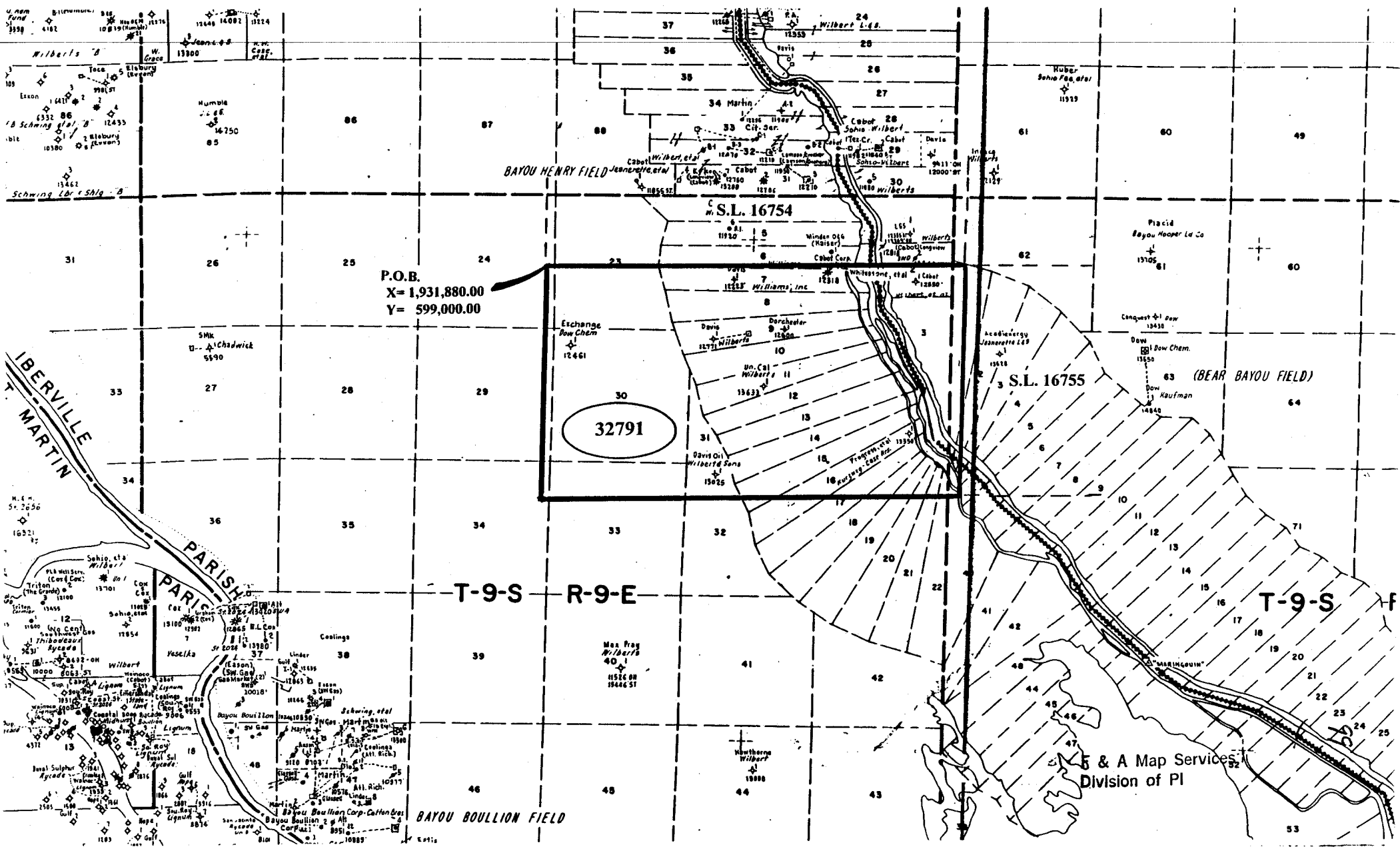


MAP NOT TO SCALE

NOT TO BE USED WITH A PORTION BID
FOR INFORMATIONAL PURPOSES ONLY!



P.O.B.
X= 1,931,880.00
Y= 599,000.00

32791

T-9-S R-9-E

T-9-S

5 & A Map Services
Division of PI

TRACT 32791 - Iberville Parish, Louisiana

All of the lands now or formerly constituting the beds and bottoms of all water bodies of every nature and description and all islands and other lands formed by accretion or reliction, except tax lands, owned by and not under mineral lease from the State of Louisiana on September 13, 2000, situated in Iberville Parish, Louisiana, within the following described boundaries: Beginning at a point having Coordinates of X = 1,931,880.00 and Y = 599,000.00; thence East 16,420.00 feet; thence South 9,240.00 feet to a point having Coordinates of X = 1,948,300.00 and Y = 589,760.00; thence West 16,420.00 feet; thence North 9,240.00 feet to the point of beginning, containing approximately **102 acres**, as shown outlined in red on a plat on file in the Office of Mineral Resources, Department of Natural Resources. All bearings, distances and coordinates are based on Louisiana Coordinate System of 1927 (South Zone).

Tract Advertised by the State Mineral Board

Bidder	Cash Payment	Price / Acre	Rental	Oil	Gas	Other

P.O.B.
X=1,931,880.00
Y= 599,000.00

S.L 16754

T9S - R9E

T9S - R10E



TR 32791
102 +/- ACS.
SEPT., 2000

S.L 16755

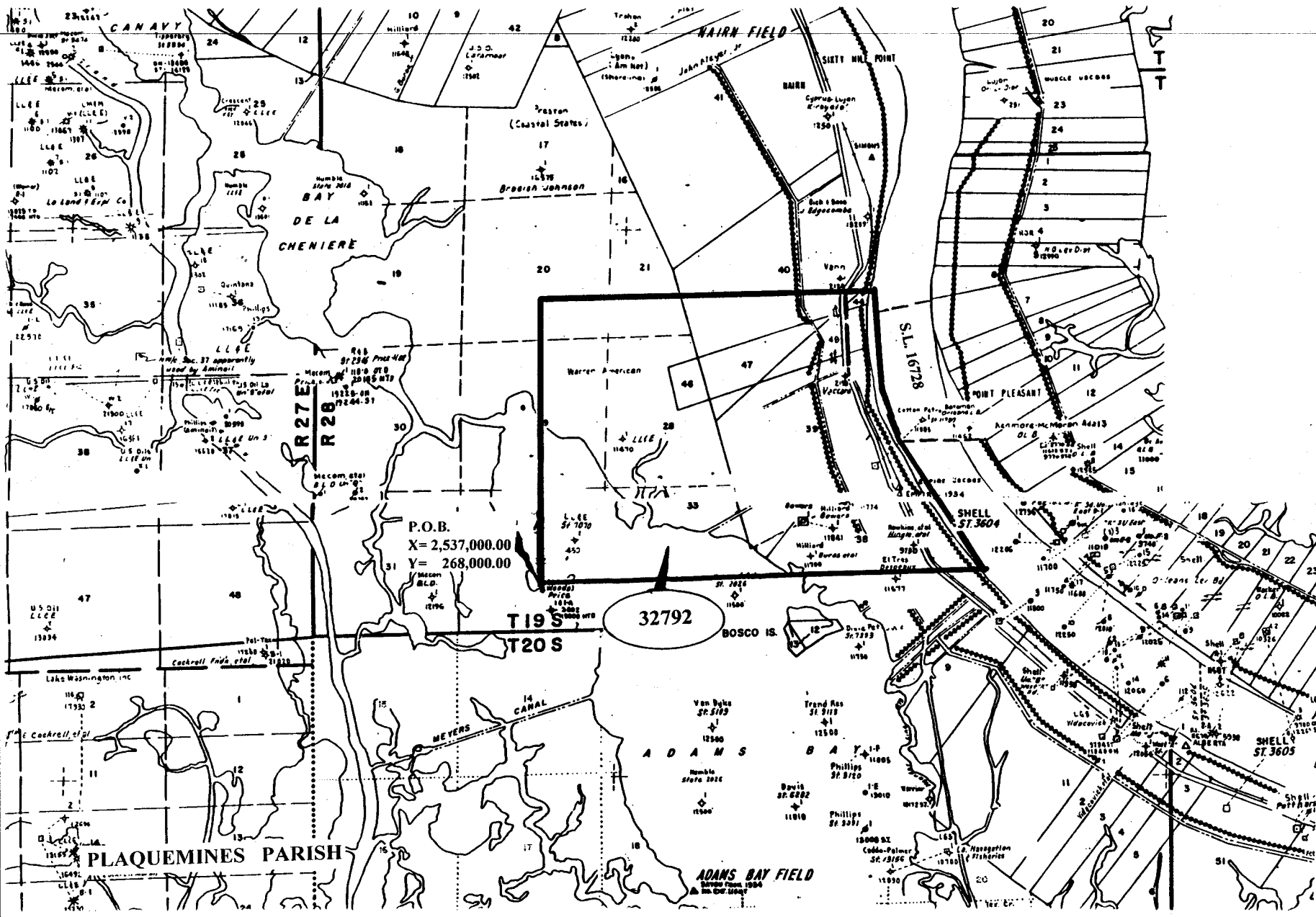
IBERVILLE PARISH

OFFICIAL COPY
OFFICE OF MINERAL RESOURCES
DEPT. OF NATURAL RESOURCES
DO NOT REMOVE



MAP NOT TO SCALE

NOT TO BE USED WITH A PORTION BID
FOR INFORMATIONAL PURPOSES ONLY!



F & A Map Services
Division of PI
102

TRACT 32792 - Plaquemines Parish, Louisiana

All of the lands now or formerly constituting the beds and bottoms of all water bodies of every nature and description and all islands and other lands formed by accretion or reliction, except tax lands, owned by and not under mineral lease from the State of Louisiana on September 13, 2000, situated in Plaquemines Parish, Louisiana, within the following described boundaries: Beginning at a point having Coordinates of X = 2,537,000.00 and Y = 268,000.00; thence North 10,000.00 feet to a point having Coordinates of X = 2,537,000.00 and Y = 278,000.00; thence East approximately 11,720 feet to a point on the right descending bank of the Mississippi River; thence Southeasterly along the right descending bank of the Mississippi River to the intersection of an East-West line having a Coordinate of Y = 268,000.00; thence West approximately 15,470 feet to the point of beginning, **LESS AND EXCEPT** any portion of State Lease No. 16728 that may lie within the above described tract, containing approximately **716 acres**, as shown outlined in red on a plat on file in the Office of Mineral Resources, Department of Natural Resources. All bearings, distances and coordinates are based on Louisiana Coordinate System of 1927 (South Zone).

NOTE: The above tract is located in or near an oyster restricted area and all operations in such area must be conducted in strict conformity with the stipulations and/or regulations of the Louisiana Department of Wildlife and Fisheries.

NOTE: The State of Louisiana does hereby reserve, and this lease shall be subject to, the imprescriptible right of surface use in the nature of a servitude in favor of the Department of Natural Resources, including its Offices and Commissions, for the sole purpose of implementing, constructing, servicing and maintaining approved coastal zone management and/or restoration projects. Utilization of any and all rights derived under this lease by the mineral lessee, its agents, successors or assigns, shall not interfere with nor hinder the reasonable surface use by the Department of Natural Resources, its Offices or Commissions, as hereinabove reserved.

Applicant: T.M. Hubiak

Bidder	Cash Payment	Price / Acre	Rental	Oil	Gas	Other

TR 32792
716 +/- ACS.
SEPT., 2000

T 19 S - R 28 E

S.L. 16728

P.O.B.
X=2,537,000.00
Y= 268,000.00

OFFICIAL COPY
OFFICE OF MINERAL RESOURCES
DEPT. OF NATURAL RESOURCES
DO NOT REMOVE

PLAQUEMINES PARISH

