

**TRACT 32788 - Cameron Parish, Louisiana**

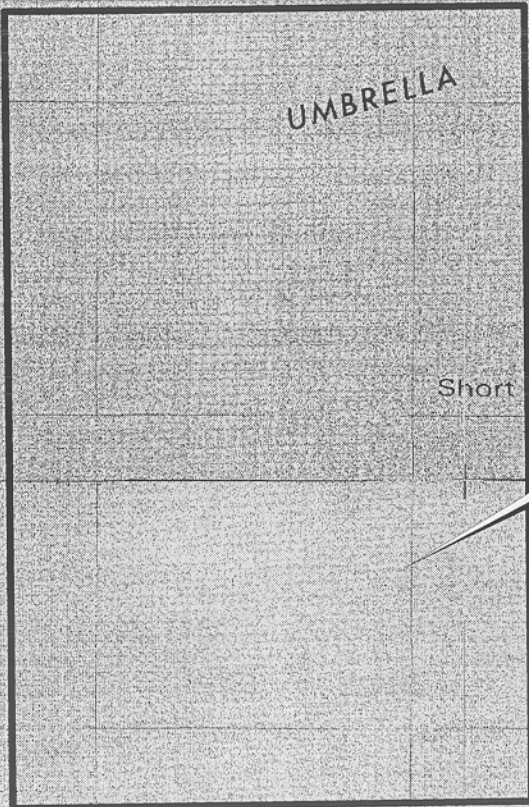
All of the lands now or formerly constituting the beds and bottoms of all water bodies of every nature and description and all islands and other lands formed by accretion or reliction, except tax lands, owned by and not under mineral lease from the State of Louisiana on September 13, 2000, situated in Cameron Parish, Louisiana, within the following described boundaries: Beginning at a point having Coordinates of X = 1,559,507.56 and Y = 446,986.98; thence East 5,380.86 feet to a point having Coordinates of X = 1,564,888.42 and Y = 446,986.98; thence South 8,350.00 feet to a point having Coordinates of X = 1,564,888.42 and Y = 438,636.98; thence West 5,380.86 feet to a point having Coordinates of X = 1,559,507.56 and Y = 438,636.98; thence North 8,350.00 feet to the point of beginning, containing approximately **1,031.46 acres**, as shown outlined in red on a plat on file in the Office of Mineral Resources, Department of Natural Resources. All bearings, distances and coordinates are based on Louisiana Coordinate System of 1927 (South Zone).

NOTE: The State of Louisiana does hereby reserve, and this lease shall be subject to, the imprescriptible right of surface use in the nature of a servitude in favor of the Department of Natural Resources, including its Offices and Commissions, for the sole purpose of implementing, constructing, servicing and maintaining approved coastal zone management and/or restoration projects. Utilization of any and all rights derived under this lease by the mineral lessee, its agents, successors or assigns, shall not interfere with nor hinder the reasonable surface use by the Department of Natural Resources, its Offices or Commissions, as hereinabove reserved.

Applicant: Stephen M. Jenkins & Associates, Inc.

Bidder	Cash Payment	Price / Acre	Rental	Oil	Gas	Other

P.O.B.  
X=1,559,507.56  
Y= 446,986.98



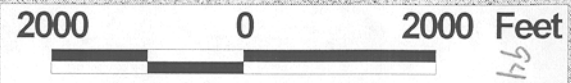
TR 32788  
1,031.46 +/- ACS.  
SEPT., 2000



GRAND LAKE

CAMERON PARISH

OFFICIAL COPY  
OFFICE OF MINERAL RESOURCES  
DEPT. OF NATURAL RESOURCES  
DO NOT REMOVE



**TRACT 32789 - Cameron Parish, Louisiana**

All of the lands now or formerly constituting the beds and bottoms of all water bodies of every nature and description and all islands and other lands formed by accretion or reliction, except tax lands, owned by and not under mineral lease from the State of Louisiana on September 13, 2000, situated in Cameron Parish, Louisiana, within the following described boundaries: Beginning at a point having Coordinates of X = 1,572,427.56 and Y = 441,862.68; thence South 3,225.70 feet to a point having Coordinates of X = 1,572,427.56 and Y = 438,636.98; thence West 7,539.14 feet to a point having Coordinates of X = 1,564,888.42 and Y = 438,636.98; thence North 3,225.70 feet to a point having Coordinates of X = 1,564,888.42 and Y = 441,862.68; thence East 7,539.14 feet to the point of beginning, containing approximately **558.29 acres**, as shown outlined in red on a plat on file in the Office of Mineral Resources, Department of Natural Resources. All bearings, distances and coordinates are based on Louisiana Coordinate System of 1927 (South Zone).

NOTE: The State of Louisiana does hereby reserve, and this lease shall be subject to, the imprescriptible right of surface use in the nature of a servitude in favor of the Department of Natural Resources, including its Offices and Commissions, for the sole purpose of implementing, constructing, servicing and maintaining approved coastal zone management and/or restoration projects. Utilization of any and all rights derived under this lease by the mineral lessee, its agents, successors or assigns, shall not interfere with nor hinder the reasonable surface use by the Department of Natural Resources, its Offices or Commissions, as hereinabove reserved.

Applicant: Stephen M. Jenkins & Associates, Inc.

Bidder	Cash Payment	Price / Acre	Rental	Oil	Gas	Other



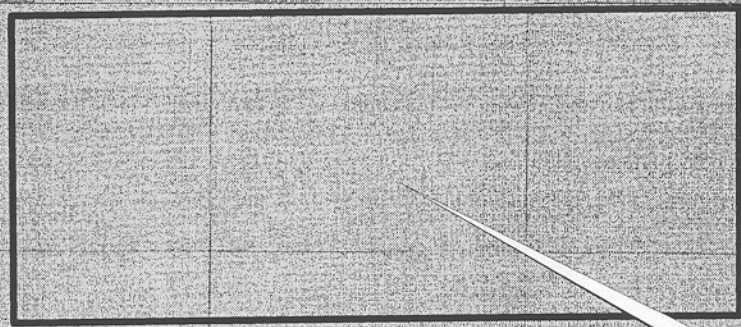
UMBRELLA

Floating Lake



P.O.B.  
X=1,572,427.56  
Y= 441,862.68

Short Point



TR 32789  
558.29 +/- ACS.  
SEPT., 2000

OFFICIAL COPY  
OFFICE OF MINERAL RESOURCES  
DEPT. OF NATURAL RESOURCES  
DO NOT REMOVE

GRAND LAKE

CAMERON PARISH



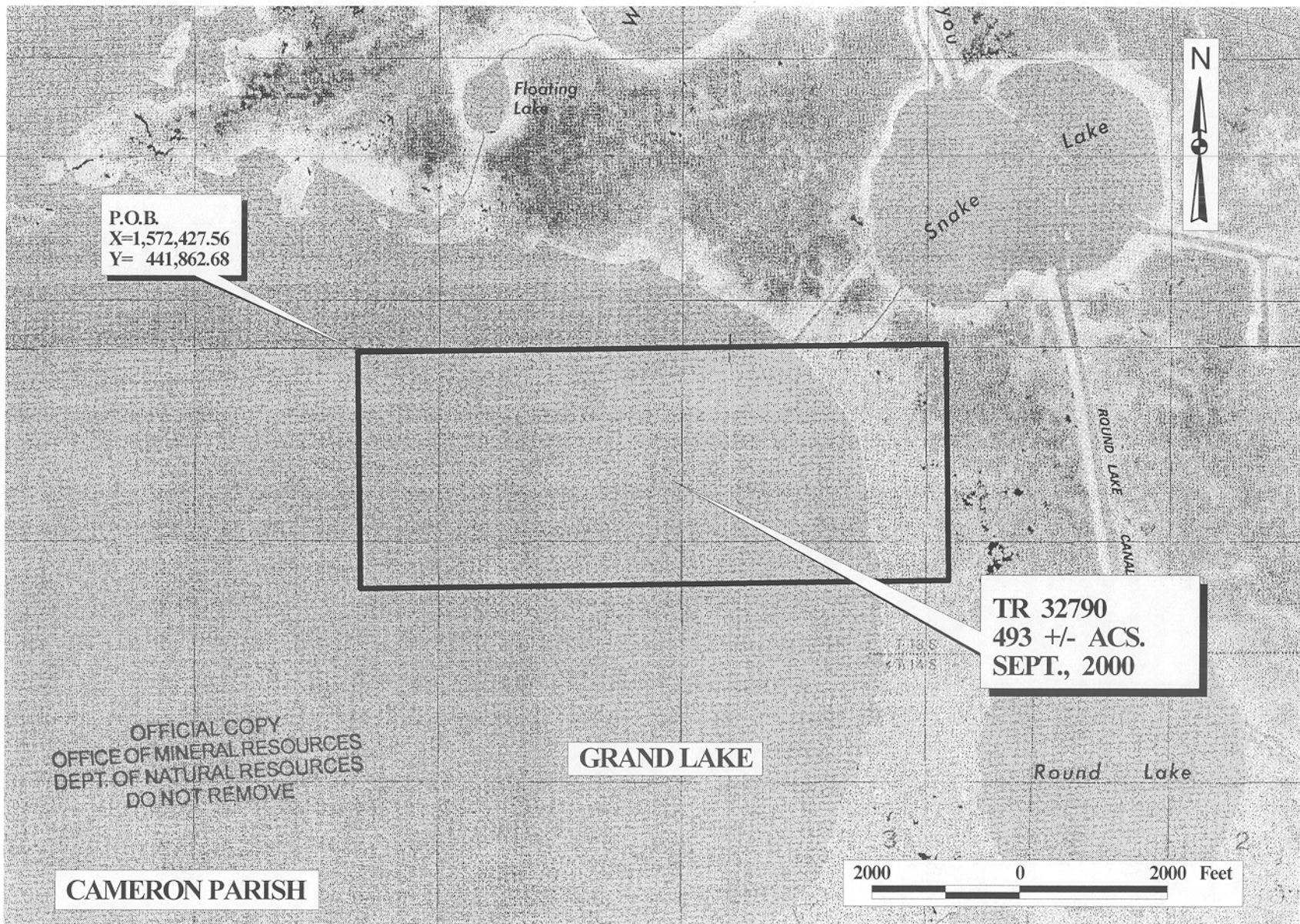
**TRACT 32790 - Cameron Parish, Louisiana**

All of the lands now or formerly constituting the beds and bottoms of all water bodies of every nature and description and all islands and other lands formed by accretion or reliction, except tax lands, owned by and not under mineral lease from the State of Louisiana on September 13, 2000, situated in Cameron Parish, Louisiana, within the following described boundaries: Beginning at a point having Coordinates of X = 1,572,427.56 and Y = 441,862.68; thence East 7,920.00 feet to a point having Coordinates of X = 1,580,347.56 and Y = 441,862.68; thence South 3,225.70 feet to a point having Coordinates of X = 1,580,347.56 and Y = 438,636.98; thence West 7,920.00 feet to a point having Coordinates of X = 1,572,427.56 and Y = 438,636.98; thence North 3,225.70 feet to the point of beginning, containing approximately **493 acres**, as shown outlined in red on a plat on file in the Office of Mineral Resources, Department of Natural Resources. All bearings, distances and coordinates are based on Louisiana Coordinate System of 1927 (South Zone).

NOTE: The State of Louisiana does hereby reserve, and this lease shall be subject to, the imprescriptible right of surface use in the nature of a servitude in favor of the Department of Natural Resources, including its Offices and Commissions, for the sole purpose of implementing, constructing, servicing and maintaining approved coastal zone management and/or restoration projects. Utilization of any and all rights derived under this lease by the mineral lessee, its agents, successors or assigns, shall not interfere with nor hinder the reasonable surface use by the Department of Natural Resources, its Offices or Commissions, as hereinabove reserved.

Applicant: Stephen M. Jenkins & Associates, Inc.

Bidder	Cash Payment	Price / Acre	Rental	Oil	Gas	Other



P.O.B.  
X=1,572,427.56  
Y= 441,862.68

TR 32790  
493 +/- ACS.  
SEPT., 2000

OFFICIAL COPY  
OFFICE OF MINERAL RESOURCES  
DEPT. OF NATURAL RESOURCES  
DO NOT REMOVE

GRAND LAKE

Round Lake

CAMERON PARISH

