

INLAND

TRACTS

TRACT 32755 - Webster Parish, Louisiana

All of the lands now or formerly constituting the beds and bottoms of Bayou Dorcheat and all islands and other lands formed by accretion or reliction, except tax lands, owned by and not under mineral lease from the State of Louisiana on September 13, 2000, situated in Webster Parish, Louisiana, within the following described boundaries: Beginning at a point having Coordinates of X = 1,740,450.00 and Y = 674,850.00; thence North 8,000.00 feet to a point having Coordinates of X = 1,740,450.00 and Y = 682,850.00; thence East 6,000.00 feet to a point having Coordinates of X = 1,746,450.00 and Y = 682,850.00; thence South 8,000.00 feet to a point having Coordinates of X = 1,746,450.00 and Y = 674,850.00; thence West 6,000.00 feet to the point of beginning, containing approximately 25 acres, as shown outlined in red on a plat on file in the Office of Mineral Resources, Department of Natural Resources. All bearings, distances and coordinates are based on Louisiana Coordinate System of 1927 (North Zone).

Tract Advertised by the State Mineral Board

Bidder	Cash Payment	Price / Acre	Rental	Oil	Gas	Other

ARMY AMMUNITION PLANT

T18N - R10W

T18N - R9W



TR 32755
25 +/- ACS.
SEPT., 2000

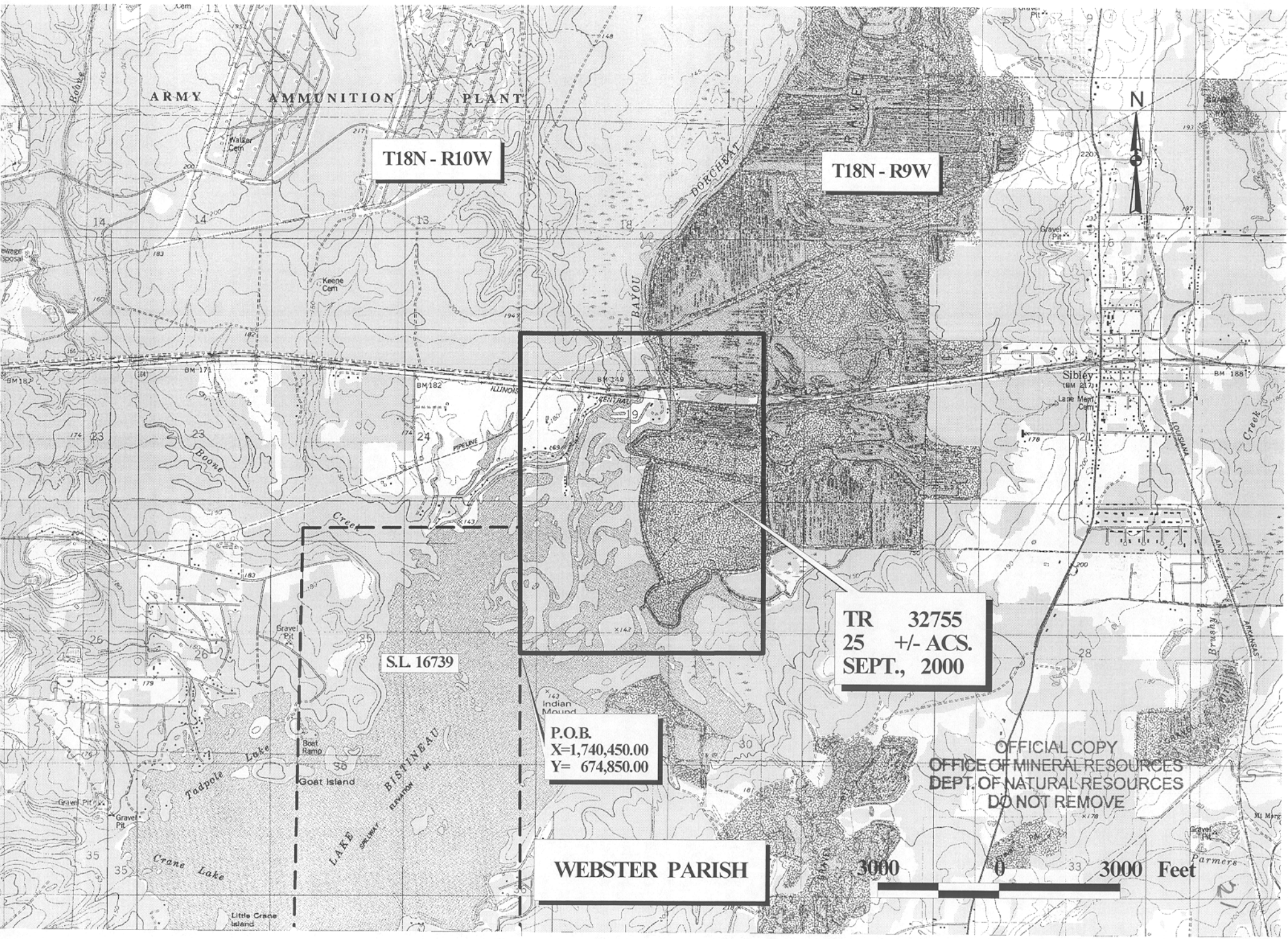
S.L 16739

P.O.B.
X=1,740,450.00
Y= 674,850.00

OFFICIAL COPY
OFFICE OF MINERAL RESOURCES
DEPT. OF NATURAL RESOURCES
DO NOT REMOVE

WEBSTER PARISH

3000 0 3000 Feet

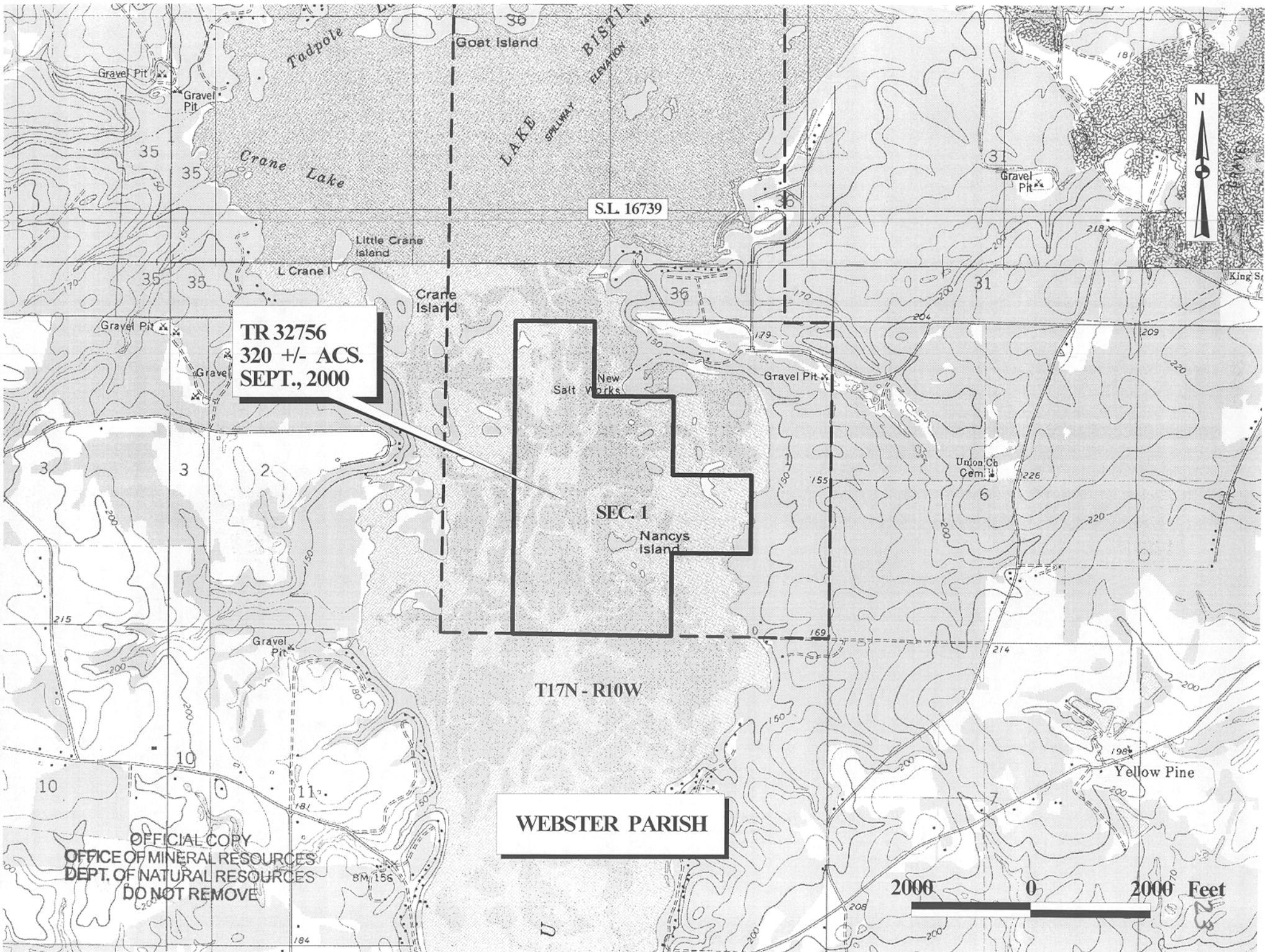


TRACT 32756 - Webster Parish, Louisiana

All lands owned by and not under mineral lease from the State of Louisiana on September 13, 2000, situated in Webster Parish, Louisiana, and being more fully described as follows: The Southwest Quarter, the South Half of the Northwest Quarter, the Northwest Quarter of the Northwest Quarter and the Northwest Quarter of the Southeast Quarter of Section 1, Township 17 North, Range 10 West, Webster Parish, Louisiana, containing approximately **320 acres**, as shown outlined in red on a plat on file in the Office of Mineral Resources, Department of Natural Resources.

Tract Advertised by the State Mineral Board

Bidder	Cash Payment	Price / Acre	Rental	Oil	Gas	Other



S.L. 16739

**TR 32756
320 +/- ACS.
SEPT., 2000**

**SEC. 1
Nancys
Island**

T17N - R10W

WEBSTER PARISH

OFFICIAL COPY
OFFICE OF MINERAL RESOURCES
DEPT. OF NATURAL RESOURCES
DO NOT REMOVE

2000 0 2000 Feet