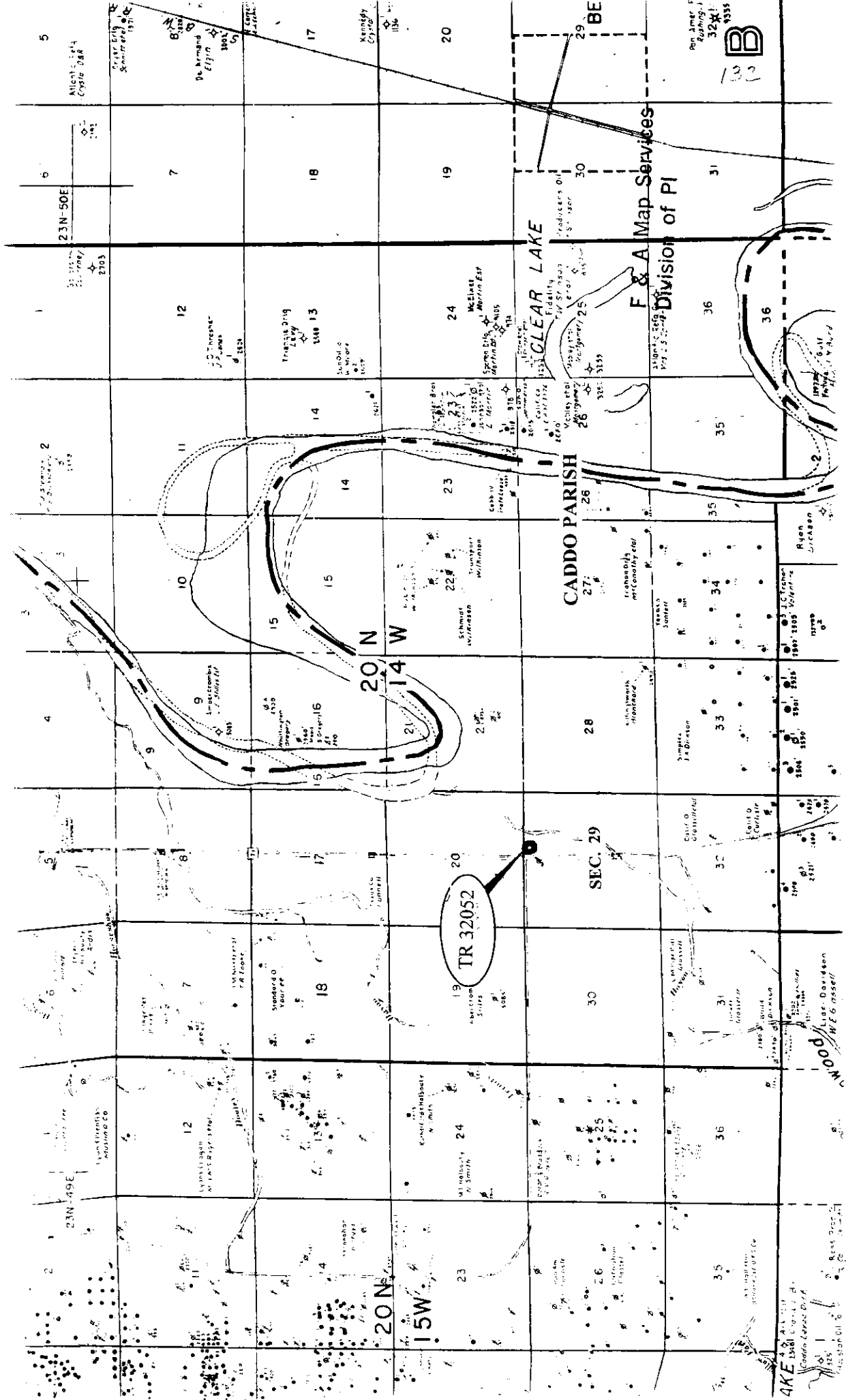


**STATE  
AGENCY  
TRACTS**

NOT TO BE USED WITH A PORTION BID  
FOR INFORMATIONAL PURPOSES ONLY!

MAP NOT TO SCALE



TR 32052

CADDO PARISH

CLEAR LAKE

F & A Map Services  
Division of PI

B

AKE

132

**TRACT 32052 - STATE AGENCY - Caddo Parish, Louisiana**

A certain tract of land belonging to and not under mineral lease from the Caddo Parish School Board, on September 8, 1999, situated in Section 29, Township 20 North, Range 14 West, Caddo Parish, Louisiana being more fully described as follows: Beginning at the intersection line between Sections 29 and 20, Township 20 North, Range 14 West, and the East boundary line of the T&P Railroad right of way; thence Southerly along said boundary line 25 feet to the edge of the public road for a point of beginning; thence East 295 feet; thence South 295 feet; thence West 295 feet to the East boundary line of the T&P Railroad right of way; thence North 295 feet to the point of beginning, excluding beds and bottoms of all navigable waters, containing approximately 2.00 acres, as shown outlined in red on a plat on file in the Office of Mineral Resources, Department of Natural Resources.

NOTE: No actual wells or excavations will be located on, or mined on, or drilling or mining operations conducted on the property.

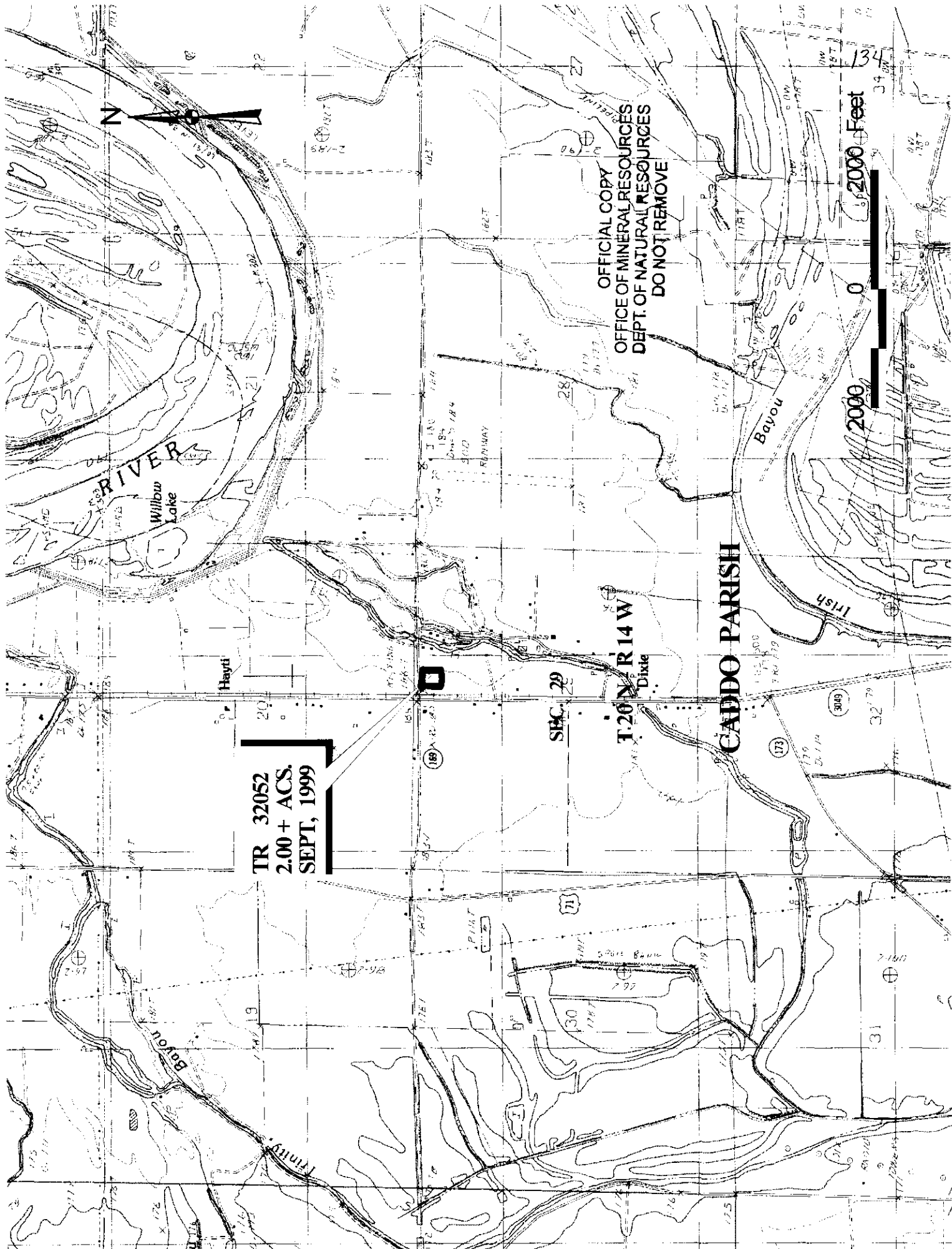
NOTE: No pipelines, tank batteries or other facilities and equipment associated with oil, mineral or gas exploration and development will be placed on the property.

NOTE: Primary term for the lease shall be 120 days.

NOTE: Any oil, mineral or gas development and/or exploration under the provisions of the lease shall not interfere, hinder or disrupt the educational programs or activities under the direction of the Caddo Parish School Board.

Applicant: George S. Pate to Agency and by Resolution of the Caddo Parish School Board authorizing the Mineral Board to act in its behalf.

Bidder	Cash Payment	Price/Acre	Rental	Oil	Gas	Other



TR 32052  
2.00+ ACS.  
SEPT, 1999

OFFICIAL COPY  
OFFICE OF MINERAL RESOURCES  
DEPT. OF NATURAL RESOURCES  
DO NOT REMOVE

CADDO PARISH

T. 20 N. R. 14 W.

SEC. 29

2000 Feet

0 2000

0 2000

0 2000

0 2000

0 2000

0 2000

0 2000

0 2000

0 2000

0 2000

0 2000

0 2000

0 2000

0 2000

0 2000

0 2000

0 2000

0 2000

0 2000

0 2000

0 2000

0 2000

0 2000

0 2000

0 2000

0 2000

0 2000

0 2000

0 2000

0 2000

0 2000

0 2000

0 2000

0 2000

0 2000

0 2000

0 2000

0 2000

0 2000

0 2000

0 2000

0 2000

0 2000

0 2000

0 2000

0 2000

0 2000

0 2000

0 2000

0 2000

0 2000

0 2000

0 2000

0 2000

0 2000

0 2000

0 2000

0 2000

0 2000

0 2000

0 2000

0 2000

0 2000

0 2000

0 2000

0 2000

0 2000

0 2000

0 2000

0 2000

0 2000

0 2000

0 2000

0 2000

0 2000

0 2000

0 2000

0 2000

0 2000

0 2000

0 2000

0 2000

0 2000

0 2000

0 2000

0 2000

0 2000

0 2000

0 2000

0 2000

0 2000

0 2000

0 2000

0 2000

0 2000

0 2000

0 2000

0 2000

0 2000

0 2000

0 2000

0 2000

0 2000

0 2000

0 2000

0 2000

0 2000

0 2000

0 2000

0 2000

0 2000

0 2000

0 2000

0 2000

0 2000

0 2000

0 2000

0 2000

0 2000

0 2000

0 2000

0 2000

0 2000

0 2000

0 2000

0 2000

0 2000

0 2000

0 2000

0 2000

0 2000

0 2000

0 2000

0 2000

0 2000

0 2000

0 2000

0 2000

0 2000

0 2000

0 2000

0 2000

0 2000

0 2000

0 2000

0 2000

0 2000

0 2000

0 2000

0 2000

0 2000

0 2000

0 2000

0 2000

0 2000

0 2000

0 2000

0 2000

0 2000

0 2000

0 2000

0 2000

0 2000

0 2000

0 2000

0 2000

0 2000

0 2000

0 2000

0 2000

0 2000

0 2000

0 2000

0 2000

0 2000

0 2000

0 2000

0 2000

0 2000

0 2000

0 2000

0 2000

0 2000

0 2000

0 2000

0 2000

0 2000

0 2000

0 2000

0 2000

0 2000

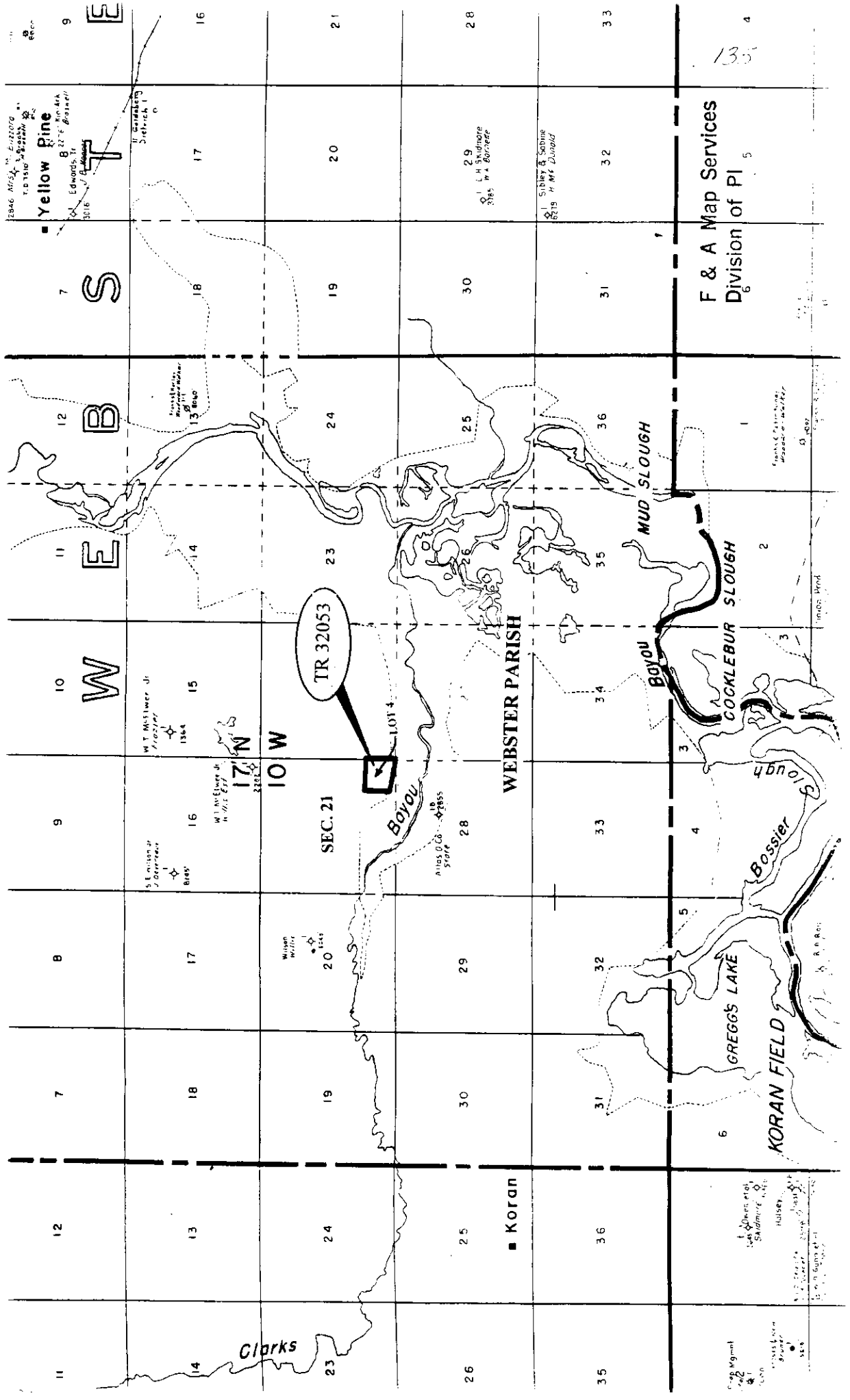
0 2000

0 2000

0 2000

NOT TO BE USED WITH A PORTION BID  
FOR INFORMATIONAL PURPOSES ONLY!

MAP NOT TO SCALE



F & A Map Services  
Division of PI

135

Scale  
1" = 400'

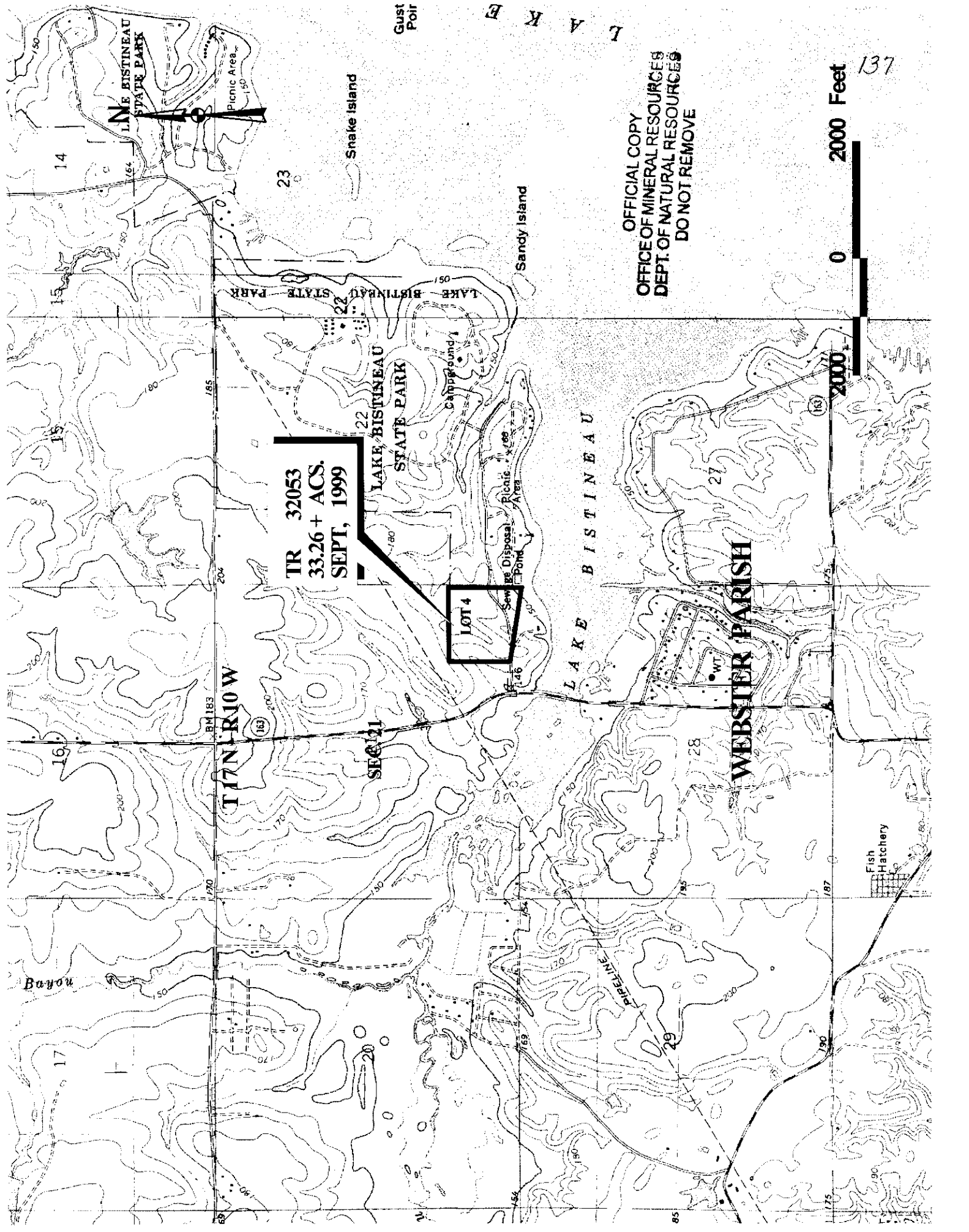
**TRACT 32053 - STATE AGENCY - Webster Parish, Louisiana**

A certain tract of land belonging to and not under mineral lease from the Louisiana State Department of Culture, Recreation and Tourism, on September 8, 1999, being more fully described as follows: A certain tract of land situated in the Southeast Quarter of the Southeast Quarter of Section 21, Township 17 North, Range 10 West, Webster Parish, Louisiana; also shown as Lot 4 of the Governmental Township Plat of Township 17 North, Range 10 West, Webster Parish, Louisiana, excluding beds and bottoms of all navigable waters, containing approximately 33.26 acres, as shown outlined in red on a plat on file in the Office of Mineral Resources, Department of Natural Resources.

NOTE: Neither the lessee nor those claiming by, through, or under it, shall ever have the right to use or enter upon the surface of the subject property in any manner whatsoever in the exercise of the servitude granted herein except as follows: Minerals shall be withdrawn or produced from the subject property by means of unitization through unit wells located on other lands by directional drilling beneath the surface of the subject property by means of wells located on the other lands.

Applicant: John T. Head to Agency and by Letter of Authorization of the Louisiana State Department of Culture, Recreation and Tourism authorizing the Mineral Board to act in its behalf.

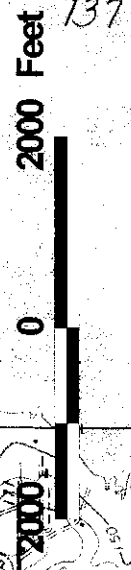
Bidder	Cash Payment	Price/Acre	Rental	Oil	Gas	Other



**TR 32053  
33.26 + ACS.  
SEPT, 1999**

**LOT 4**

OFFICIAL COPY  
OFFICE OF MINERAL RESOURCES  
DEPT. OF NATURAL RESOURCES  
DO NOT REMOVE



L A K E  
Gust Poir

T17N R10W

SECTION

WEBSTER PARISH

L A K E  
B I S T I N E A U

L A K E  
B I S T I N E A U  
S T A T E  
P A R K

Snake Island

Sandy Island

Fish Hatchery

Bayou

14

15

16

17

23

22

21

29

28

27

2000

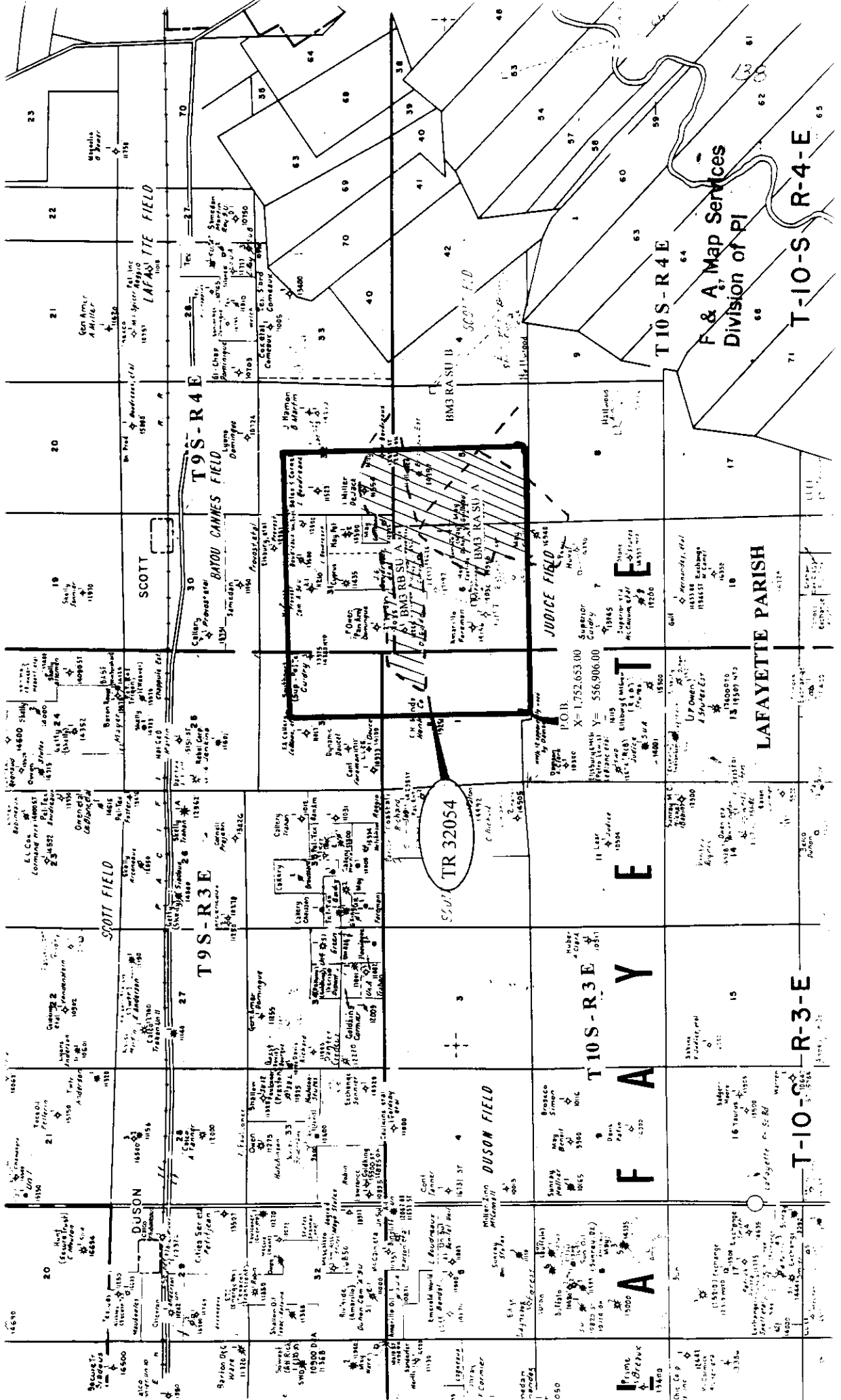
0

2000 Feet

137

NOT TO BE USED WITH A PORTION BID  
FOR INFORMATIONAL PURPOSES ONLY!

MAP NOT TO SCALE



F & A, Map Services  
Division of PI

LAFAYETTE PARISH

TR 32054

POB  
X = 1,752,653.00  
Y = 556,906.00

T-10-S-R-3-E

T-10-S-R-4-E

T-9-S-R-4-E

T-9-S-R-3-E

T-10-S-R-3-E

A

F

A

Y

E

A

F

A

A

F

A

A

F

A

A

F

A

A

F

A

A

F

A

A

F

A

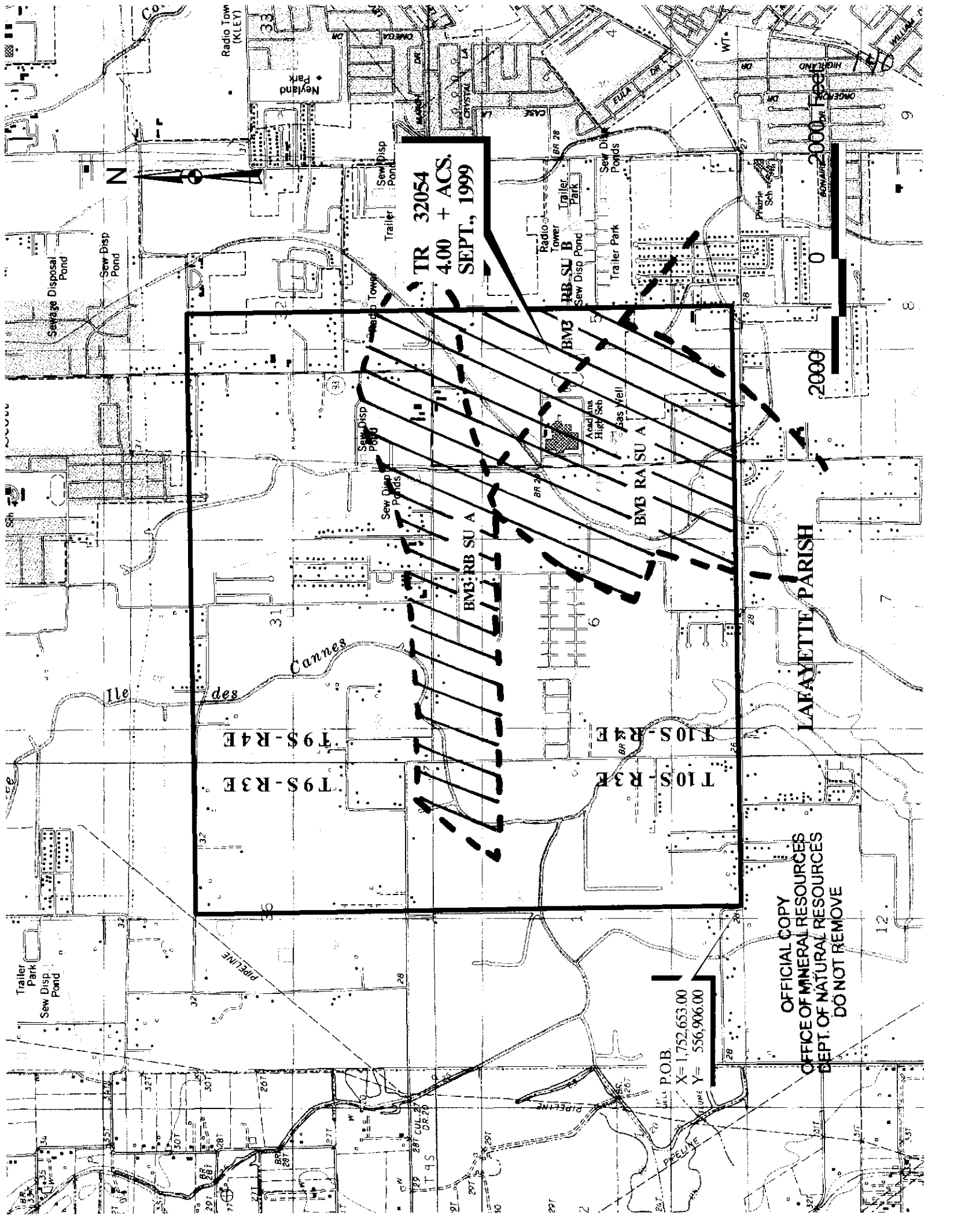


**TRACT 32054 - STATE AGENCY - Lafayette Parish, Louisiana**

A certain tract of land belonging to and not under mineral lease from the Louisiana Department of Transportation and Development, on September 8, 1999, being more fully described as follows: All of the rights, title and interest in any highways, rights-of-ways, roads or other lands owned by and not presently under mineral lease from the Louisiana Department of Transportation and Development in Lafayette Parish, Louisiana, situated within the following described area: Beginning at a point having Coordinates of X = 1,752,653.00 and Y = 556,906.00; thence North 9,448.00 feet to a point having Coordinates of X = 1,752,653.00 and Y = 566,354.00; thence East 10,391.00 feet to a point having Coordinates of X = 1,763,044.00 and Y = 566,354.00; thence South 9,448.00 feet to a point having Coordinates of X = 1,763,044.00 and Y = 556,906.00; thence West 10,391.00 feet to the point of beginning, **LESS AND EXCEPT** that portion lying within the Office of Conservation, geological units: BM3 RB SUA and SUB; BM3 RA SUA, as per order no. 335-F-4, excluding beds and bottoms of all navigable waters, containing approximately **4 acres**, as shown outlined in red on a plat on file in the Office of Mineral Resources, Department of Natural Resources. All bearings, distances and coordinates are based on Louisiana Coordinate System of 1927 (South Zone).

Applicant: F.K. Fontenot to Agency and by Letter of Authorization from the Louisiana Department of Transportation and Development authorizing the Mineral Board to act in its behalf.

Bidder	Cash Payment	Price/Acre	Rental	Oil	Gas	Other



TR 32054  
4.00 + ACS,  
SEPT., 1999

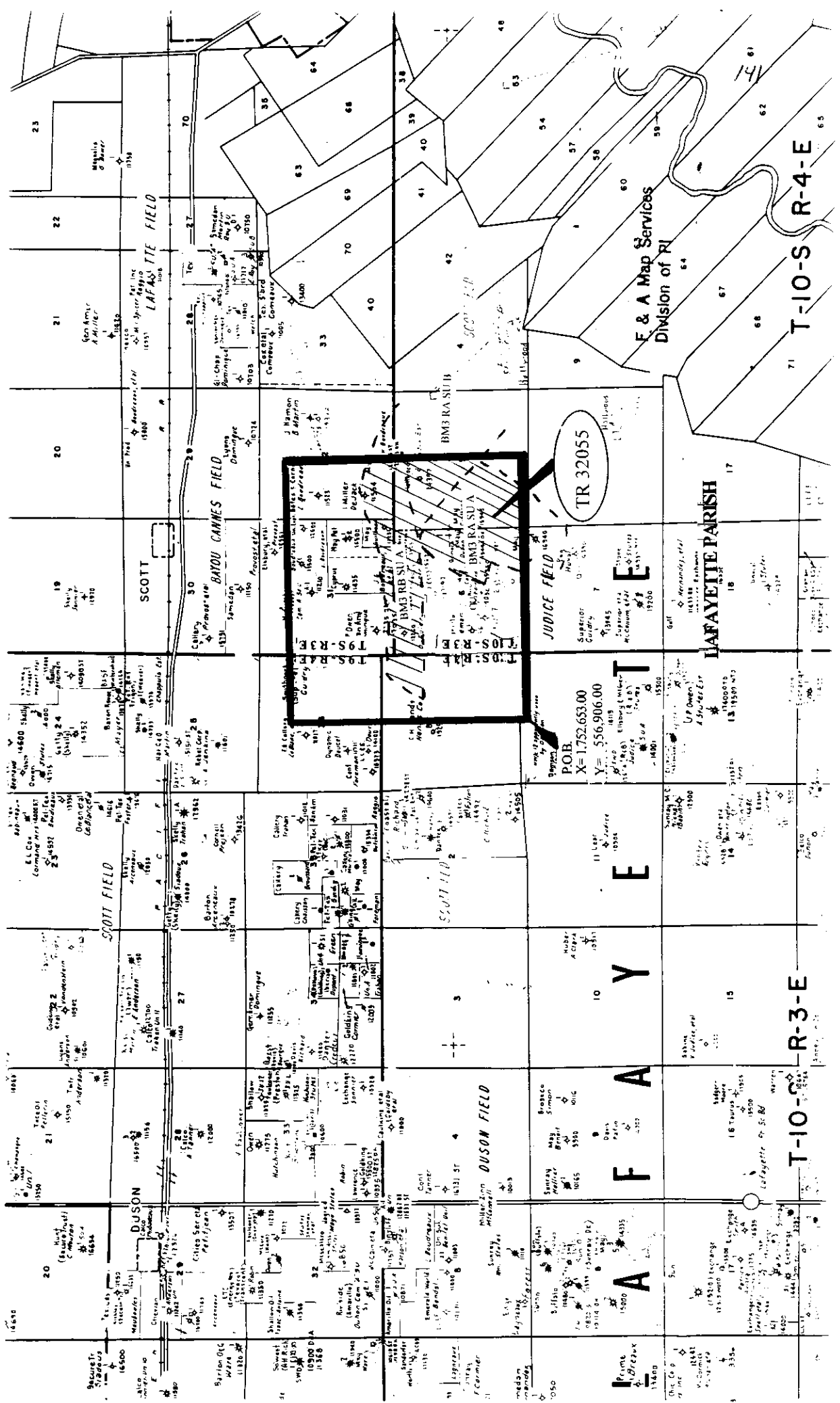
LAFAYETTE PARISH

OFFICIAL COPY  
OFFICE OF MINERAL RESOURCES  
DEPT. OF NATURAL RESOURCES  
DO NOT REMOVE

P.O.B.  
X= 1,752,653.00  
Y= 556,906.00

NOT TO BE USED WITH A PORTION BID  
FOR INFORMATIONAL PURPOSES ONLY!

MAP NOT TO SCALE



**TRACT 32055 - STATE AGENCY - Lafayette Parish, Louisiana**

A certain tract of land belonging to and not under mineral lease from the City of Scott, on September 8, 1999, being more fully described as follows: All of the rights, title and interest in any highways, right-of-ways, roads or other lands owned by and not presently under mineral lease from the City of Scott in Lafayette Parish, Louisiana, situated within the following described area: Beginning at a point having Coordinates of X = 1,752,653.00 and Y = 556,906.00; thence North 9,448.00 feet to a point having Coordinates of X = 1,752,653.00 and Y = 566,354.00; thence East 10,391.00 feet to a point having Coordinates of X = 1,763,044.00 and Y = 566,354.00; thence South 9,448.00 feet to a point having Coordinates of X = 1,763,044.00 and Y = 556,906.00; thence West 10,391.00 feet to the point of beginning **LESS AND EXCEPT** that portion lying within the Office of Conservation, geological units BM3 RB SUA and SUB; BM3 RA SUA, as per order no. 335-F-4, excluding beds and bottoms of all navigable waters, containing approximately **19 acres**, as shown outlined in red on a plat on file in the Office of Mineral Resources, Department of Natural Resources. All bearings, distances and coordinates are based on Louisiana Coordinate System of 1927 (South Zone).

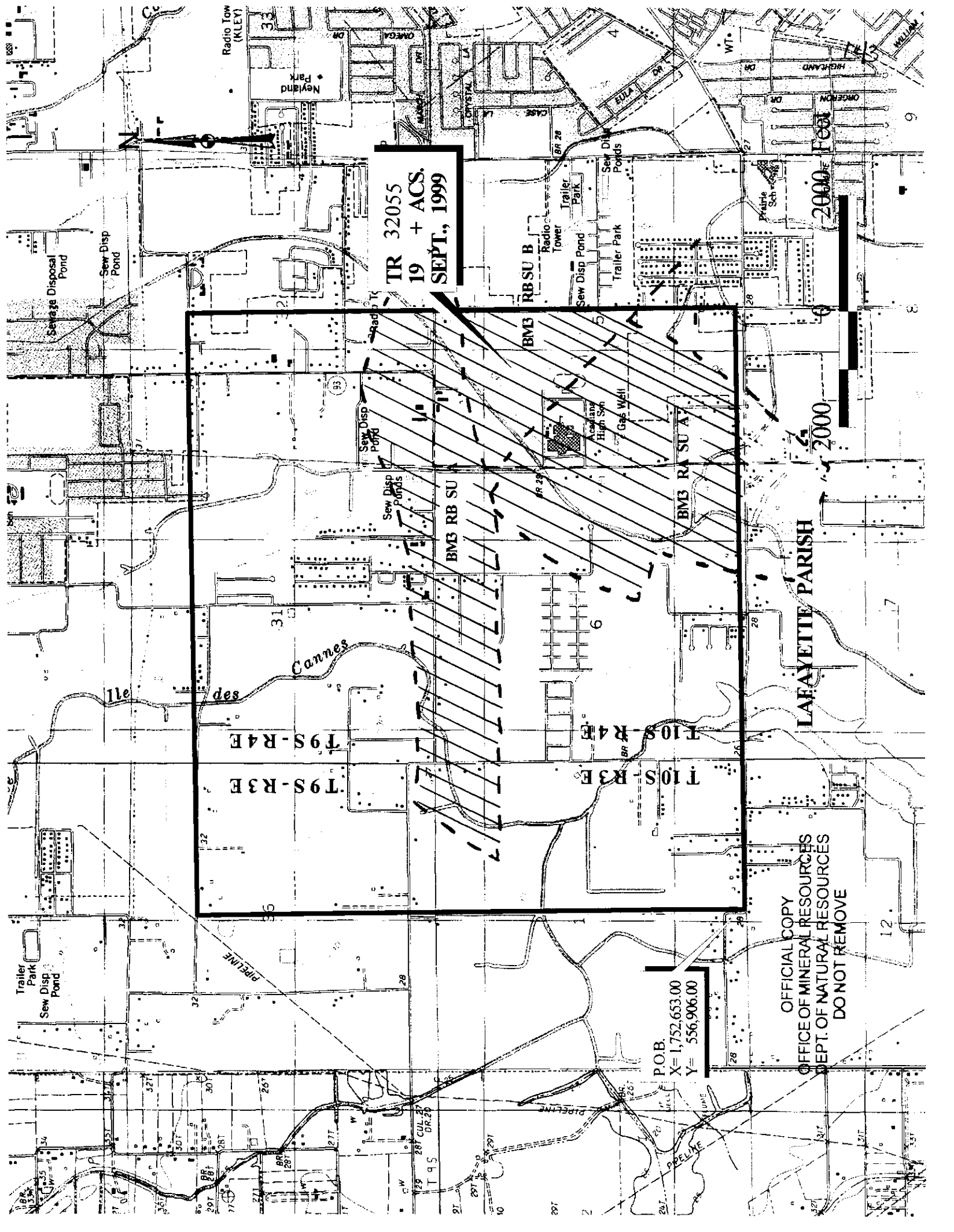
NOTE: Any mineral lease should be subject to the provision that there shall be no drilling or surface operations on the above described property.

NOTE: Any mineral lease should provide that the lessee, or any assignee, shall be required to obtain the consent of the City of Scott for the assignment of the lease.

NOTE: Any mineral lease should provide that the lessee shall at all times comply with all applicable environmental and wetlands laws and regulations promulgated by the Federal Government, the State of Louisiana, and/or any department, office or agency thereof, and that the lessee shall obtain all licenses and/or permits required under such laws and regulations prior to commencement of any operations affecting the leased property.

Applicant: F.K. Fontenot to Agency and by Resolution of the City of Scott authorizing the Mineral Board to act in its behalf.

Bidder	Cash Payment	Price/Acre	Rental	Oil	Gas	Other



TR 32055  
19 + ACS.  
SEPT., 1999

P.O.B.  
X= 1,752,653.00  
Y= 556,906.00

OFFICIAL COPY  
OFFICE OF MINERAL RESOURCES  
DEPT. OF NATURAL RESOURCES  
DO NOT REMOVE

2000

LAFAYETTE PARISH

2000

T9S-R3E  
T9S-R4E

T10S-R3E  
T10S-R4E

BM3 RB SU

BM3 RBSU B

BM3 RA SU A

Ile des Cannes

PIPELINE

PIPELINE



Radio Tow (KLEY)

Radio Tower

Acadian High Sch

Gas Well

Trailer Park

Sew Disp Ponds

Sewage Disposal Pond

Trailer Park

Sew Disp Pond

Sewage Disposal Pond

Trailer Park

Sew Disp Pond

Sewage Disposal Pond

Trailer Park

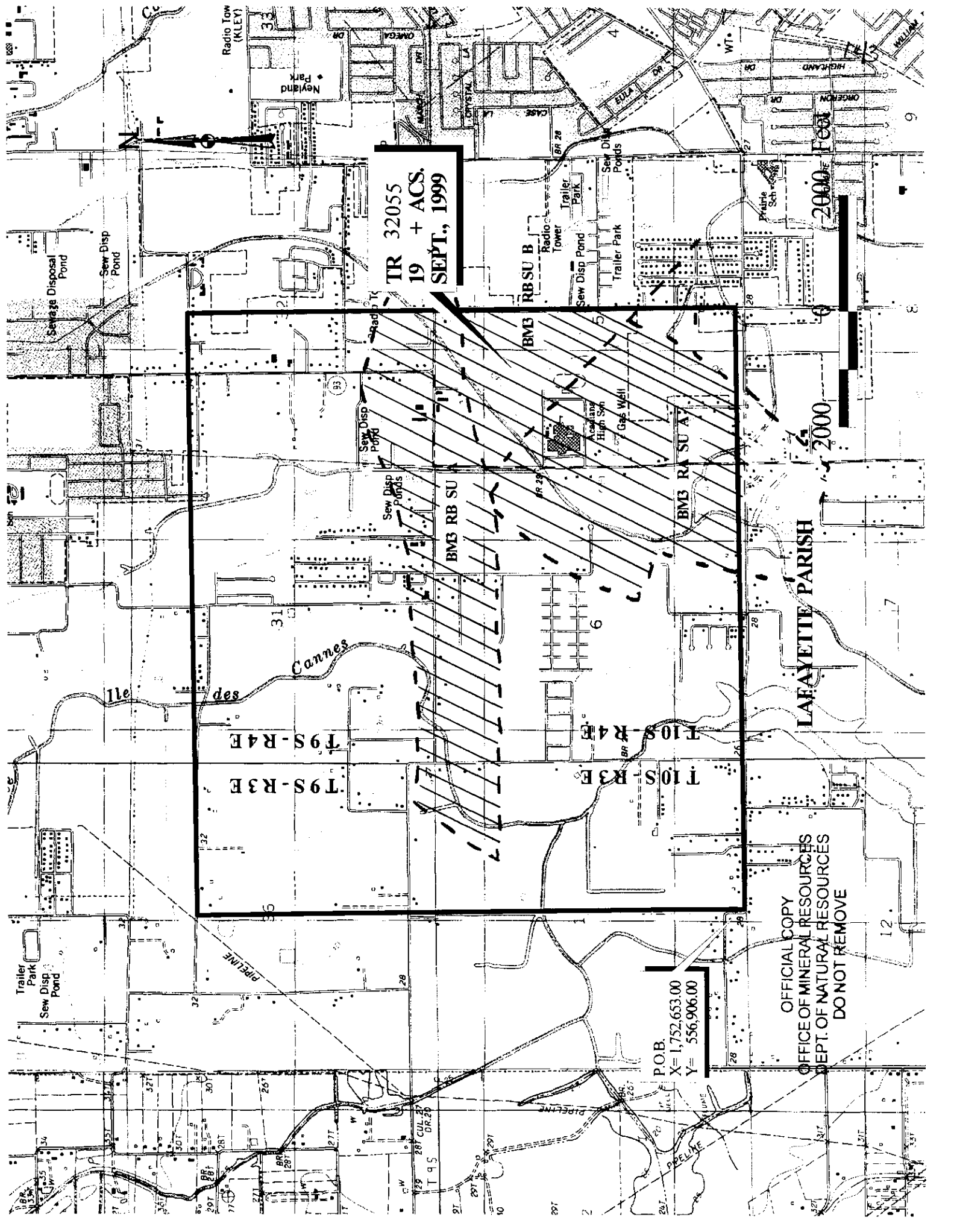
Sew Disp Pond

Sewage Disposal Pond

Trailer Park

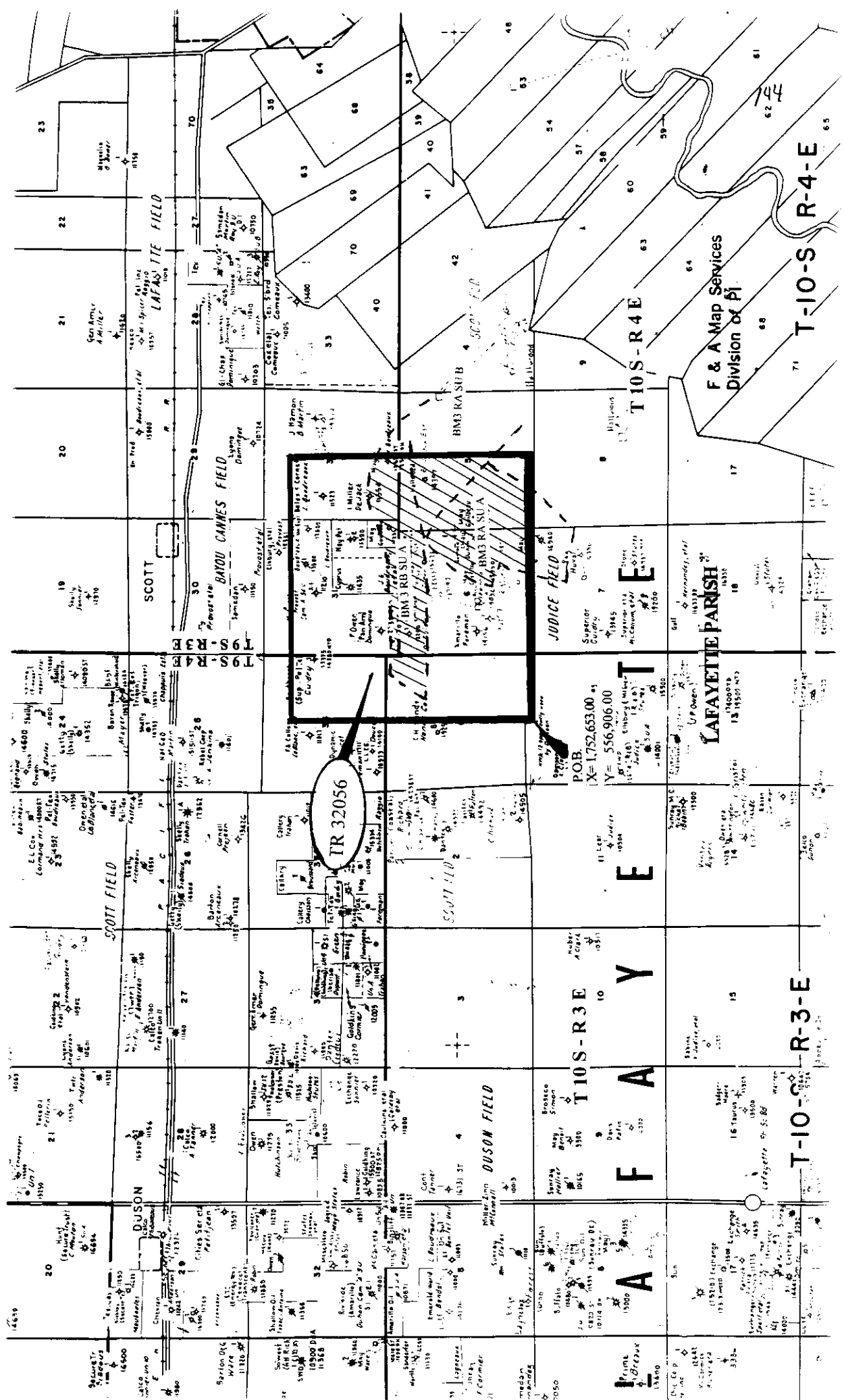
Sew Disp Pond

Sewage Disposal Pond



NOT TO BE USED WITH A PORTION BID  
 FOR INFORMATIONAL PURPOSES ONLY!

MAP NOT TO SCALE



**TRACT 32056 - STATE AGENCY - Lafayette Parish, Louisiana**

A certain tract of land belonging to and not under mineral lease from the Lafayette City-Parish Consolidated Government, on September 8, 1999, being more fully described as follows: All of the rights, title and interest in any highways, rights-of-ways, roads or other lands owned by and not presently under mineral lease from the Lafayette City-Parish Consolidated Government in Lafayette Parish, Louisiana, situated within the following described area: Beginning at a point having Coordinates of X = 1,752,653.00 and Y = 556,906.00; thence North 9,448.00 feet to a point having Coordinates of X = 1,752,653.00 and Y = 566,354.00; thence East 10,391.00 feet to a point having Coordinates of X = 1,763,044.00 and Y = 566,354.00; thence South 9,448.00 feet to a point having Coordinates of X = 1,763,044.00 and Y = 556,906.00; thence West 10,391.00 feet to the point of beginning, **LESS AND EXCEPT** that portion lying within the Office of Conservation, geological units: BM3 RB SUA and SUB; BM3 RA SUA, as per order no. 335-F-4, excluding beds and bottoms of all navigable waters, containing approximately **47 acres**, as shown outlined in red on a plat on file in the Office of Mineral Resources, Department of Natural Resources. All bearings, distances and coordinates are based on Louisiana Coordinate System of 1927 (South Zone).

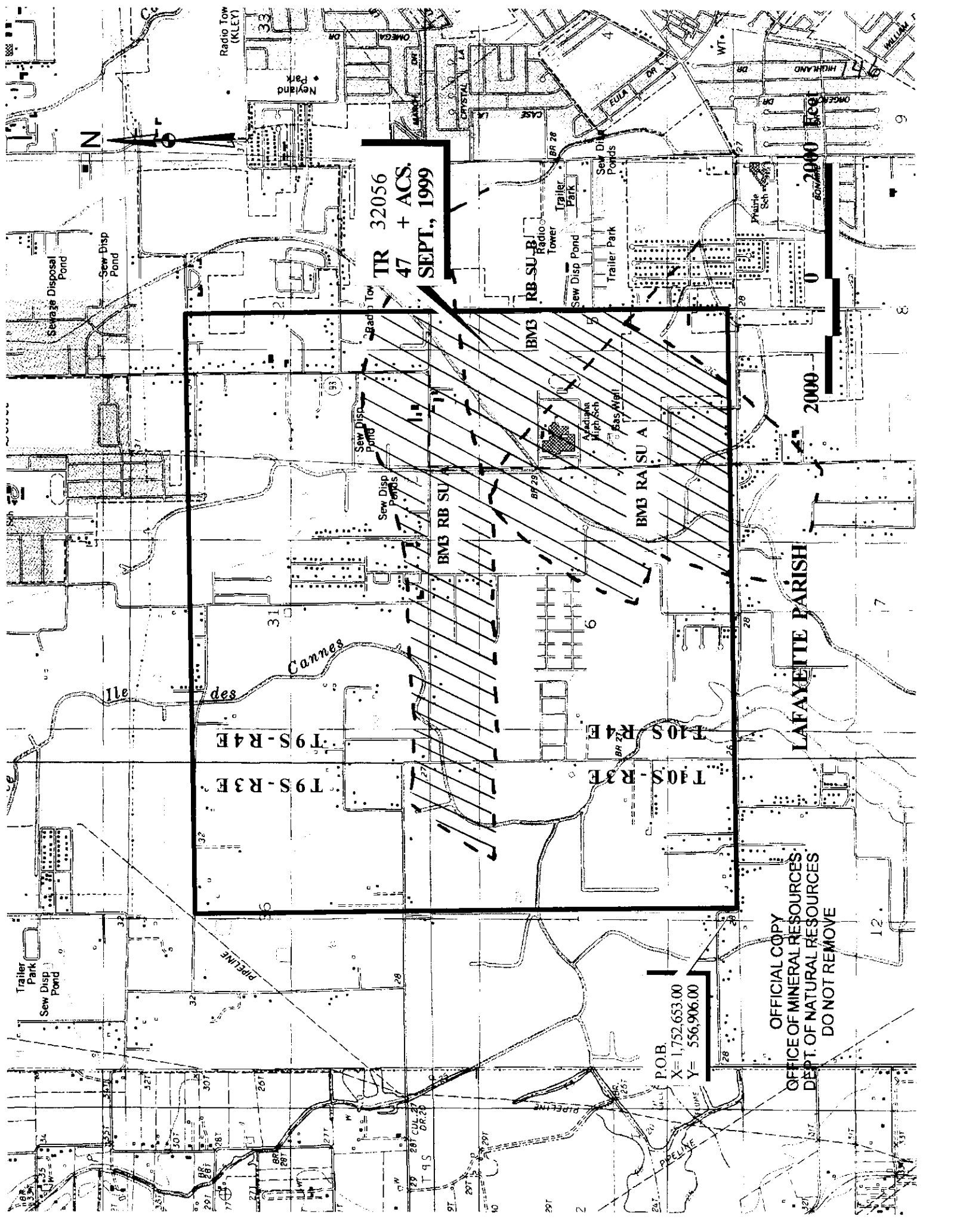
NOTE: Said lease must be subject to the provision that there shall be no drilling or surface operations on the lands vested in the Lafayette City-Parish Consolidated Government.

NOTE: Said lease must further provide that the lessee, or any assignee, shall be required to obtain consent from the Lafayette City-Parish Consolidated Government prior to the execution of any assignment.

NOTE: Said lease must further provide that the lessee shall at all times comply with all applicable environmental and wetlands laws and regulations promulgated by the federal government, the State of Louisiana and/or any department, office or agency thereof, and that the lessee shall obtain all licenses and/or permits required under such laws and regulations prior to commencement of any operations affecting the leased property.

Applicant: F.K. Fontenot to Agency and by Resolution of the Lafayette City-Parish Consolidated Government authorizing the Mineral Board to act in its behalf.

Bidder	Cash Payment	Price/Acre	Rental	Oil	Gas	Other



TR 32056  
47 + ACS.  
SEPT., 1999

P.O.B.  
X= 1,752,653.00  
Y= 556,906.00

OFFICIAL COPY  
OFFICE OF MINERAL RESOURCES  
DEPT. OF NATURAL RESOURCES  
DO NOT REMOVE

LAFAYETTE PARISH

2000

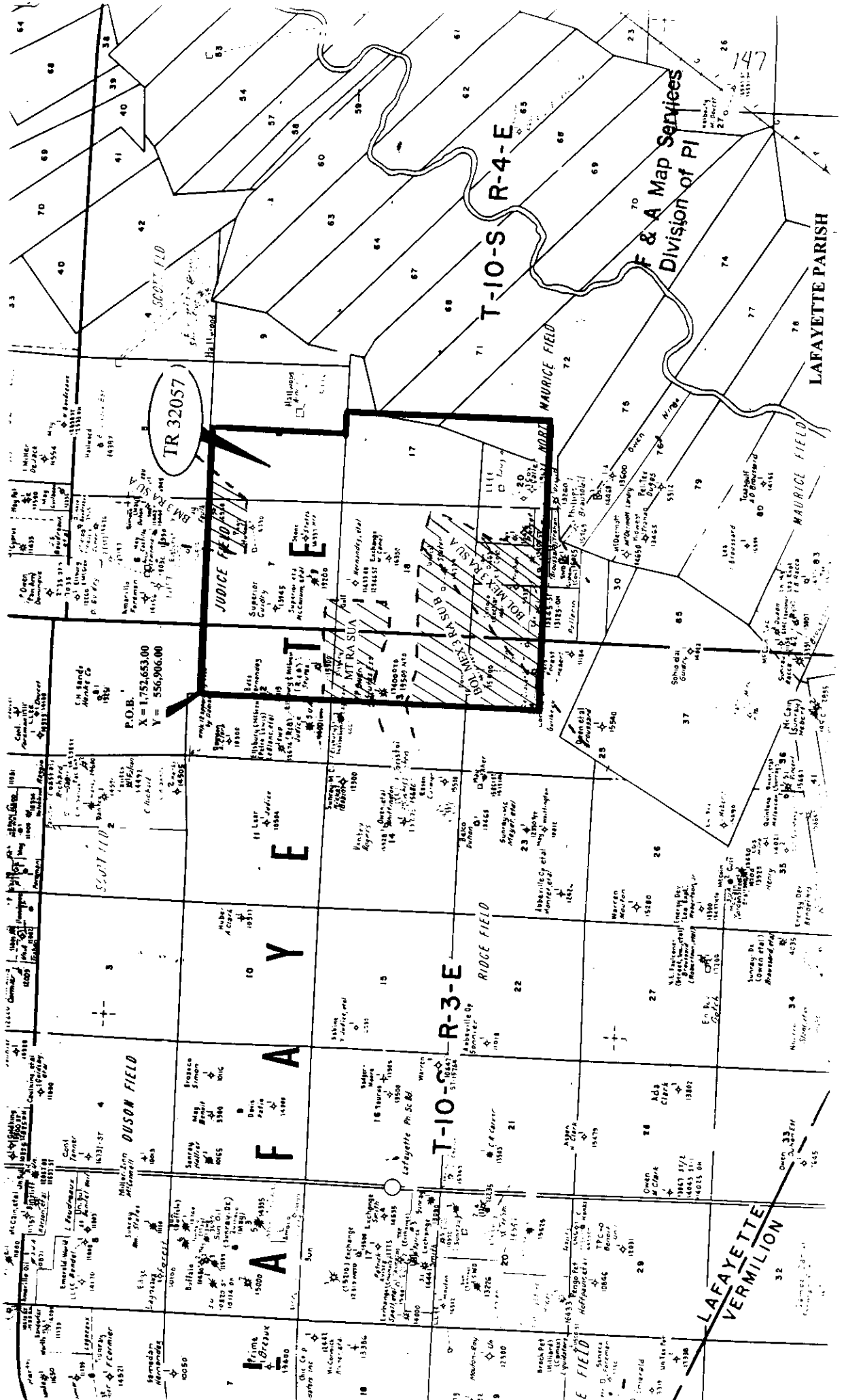
2000





MAP NOT TO SCALE

NOT TO BE USED WITH A PORTION BID  
FOR INFORMATIONAL PURPOSES ONLY!



**TRACT 32057 - STATE AGENCY - Lafayette Parish, Louisiana**

A certain tract of land belonging to and not under mineral lease from the Louisiana Department of Transportation and Development, on September 8, 1999, being more fully described as follows: All of the rights, title and interest in any highways, rights-of-ways, roads or other lands owned by and not presently under mineral lease from the Louisiana Department of Transportation and Development in Lafayette Parish, Louisiana, situated within the following described area: Beginning at a point having Coordinates of X = 1,752,653.00 and Y = 556,906.00; thence East 10,391.00 feet to a point having Coordinates of X = 1,763,044.00 and Y = 556,906.00; thence South 5,428.00 feet to a point having Coordinates of X = 1,763,044.00 and Y = 551,478.00; thence East 858.00 feet to a point having Coordinates of X = 1,763,902.00 and Y = 551,478.00; thence South 7,849.00 feet to a point having Coordinates of X = 1,763,902.00 and Y = 543,629.00; thence West 11,249.00 feet to a point having Coordinates of X = 1,752,653.00 and Y = 543,629.00; thence North 13,277.00 feet to the point of beginning, **LESS AND EXCEPT** that portion lying within the Office of Conservation, geological units: MT RA SUA, order no. 612-L-3; BM3 RA SUA, order no. 335-F-4; BOL MEX 3 RA SUA and SUB, order no. 800-D, excluding beds and bottoms of all navigable waters, containing approximately **27 acres**, as shown outlined in red on a plat on file in the Office of Mineral Resources, Department of Natural Resources. All bearings, distances and coordinates are based on Louisiana Coordinate System of 1927 (South Zone).

Applicant: F.K. Fontenot to Agency and by Letter of Authorization from the Louisiana Department of Transportation and Development authorizing the Mineral Board to act in its behalf.

Bidder	Cash Payment	Price/Acre	Rental	Oil	Gas	Other

P.O.B.

X = 1,752,653.00

Y = 556,906.00

TR 32057  
27  
+ACS.  
SEPT, 1999

LAFAYETTE PARISH

BOL MEX 3 RA SU A

BOL MEX 3 RA SU B

T10S R4E  
T10S R3E

MT RA SUA

BMS RA SU A

OFFICIAL COPY  
OFFICE OF MINERAL RESOURCES  
STATE OF LOUISIANA  
DO NOT REMOVE

2000 Feet

2000

Gas Well

Gas Well

Substation

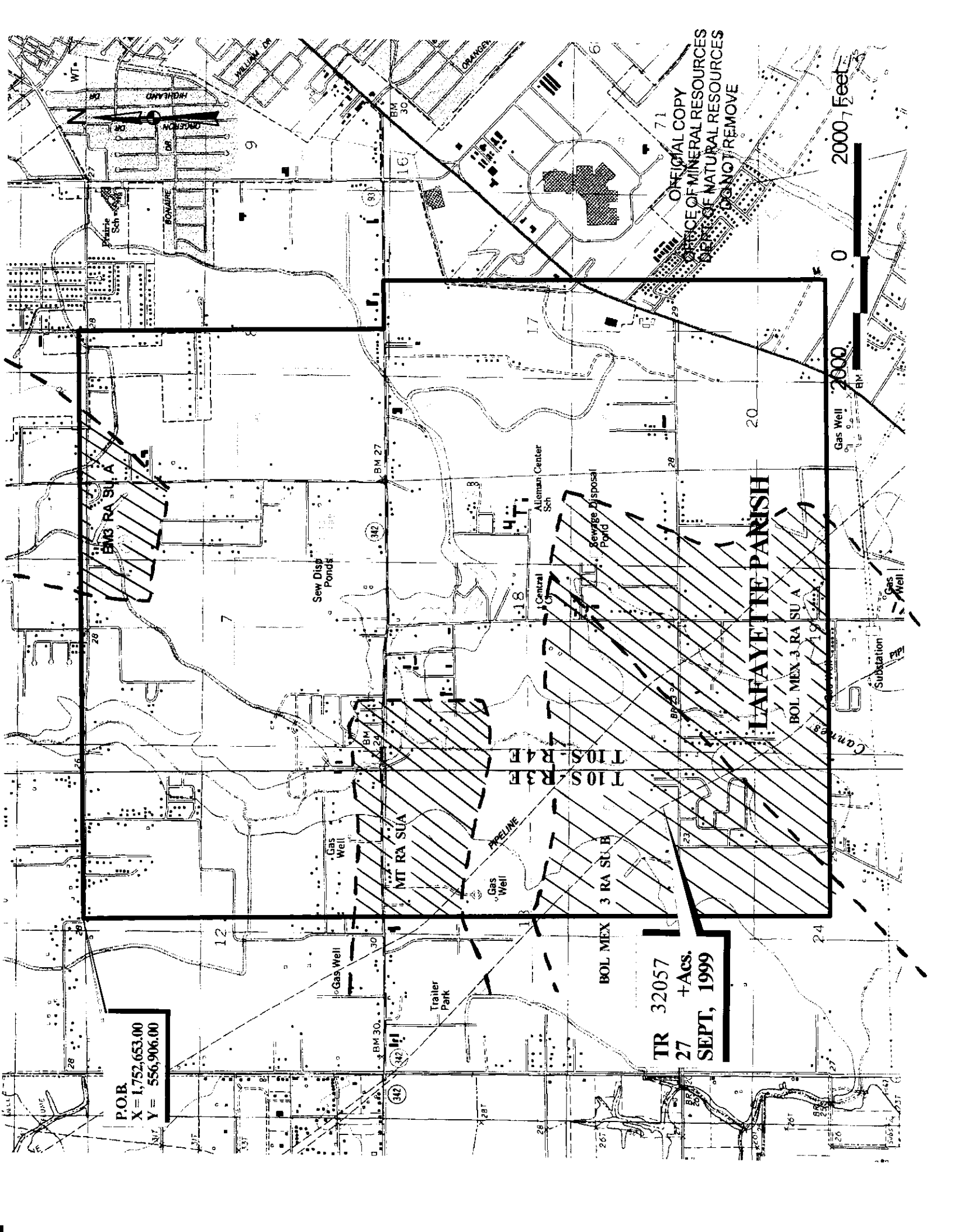
Gas Well

Gas Well

Gas Well

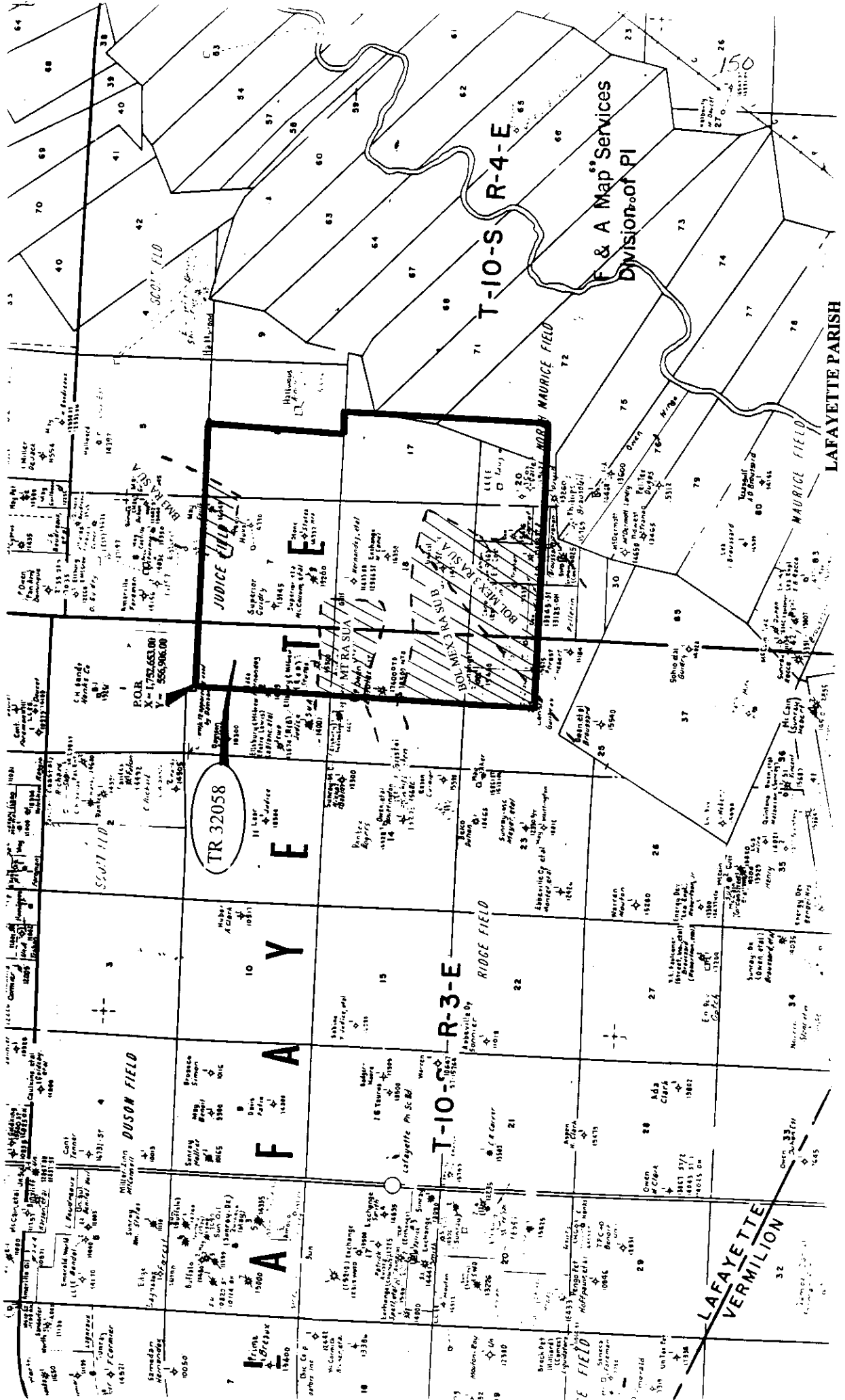
Gas Well

Gas Well



NOT TO BE USED WITH A PORTION BID  
FOR INFORMATIONAL PURPOSES ONLY!

MAP NOT TO SCALE



**TRACT 32058 - STATE AGENCY - Lafayette Parish, Louisiana**

A certain tract of land belonging to and not under mineral lease from the Lafayette City-Parish Consolidated Government, on September 8, 1999, being more fully described as follows: All of the rights, title and interest in any highways, right-of-ways, roads or other lands owned by and not presently under mineral lease from the Lafayette City-Parish Consolidated Government in Lafayette Parish, Louisiana, situated within the following described area: Beginning at a point having Coordinates of X = 1,752,653.00 and Y = 556,906.00; thence East 10,391.00 feet to a point having Coordinates of X = 1,763,044.00 and Y = 556,906.00; thence South 5,428.00 feet to a point having Coordinates of X = 1,763,044.00 and Y = 551,478.00; thence East 858.00 feet to a point having Coordinates of X = 1,763,902.00 and Y = 551,478.00; thence South 7,849.00 feet to a point having Coordinates of X = 1,763,902.00 and Y = 543,629.00; thence West 11,249.00 feet to a point having Coordinates of X = 1,752,653.00 and Y = 543,629.00; thence North 13,277.00 feet to the point of beginning, **LESS AND EXCEPT** that portion within the Office of Conservation, geological units MT RA SUA, order no. 612-L-3; BM3 RA SUA, order no. 335-F-4; BOL MEX 3 RA SUA and SUB, order no. 800-D, excluding beds and bottoms of all navigable waters, containing approximately 81 acres, as shown outlined in red on a plat on file in the Office of Mineral Resources, Department of Natural Resources. All bearings, distances and coordinates are based on Louisiana Coordinate System of 1927 (South Zone).

NOTE: Said lease must be subject to the provision that there shall be no drilling or surface operations on the lands vested in the Lafayette City-Parish Consolidated Government.

NOTE: Said lease must further provide that the lessee, or any assignee, shall be required to obtain consent from the Lafayette City-Parish Consolidated Government prior to the execution of any assignment.

NOTE: Said lease must further provide that the lessee shall at all times comply with all applicable environmental and wetlands laws and regulations promulgated by the federal government, the State of Louisiana and/or any department, office or agency thereof, and that the lessee shall obtain all licenses and/or permits required under such laws and regulations prior to commencement of any operations affecting the leased property.

Applicant: F.K. Fontenot to Agency and by Resolution of the Lafayette City-Parish Consolidated Government authorizing the Mineral Board to act in its behalf.

Bidder	Cash Payment	Price/Acre	Rental	Oil	Gas	Other

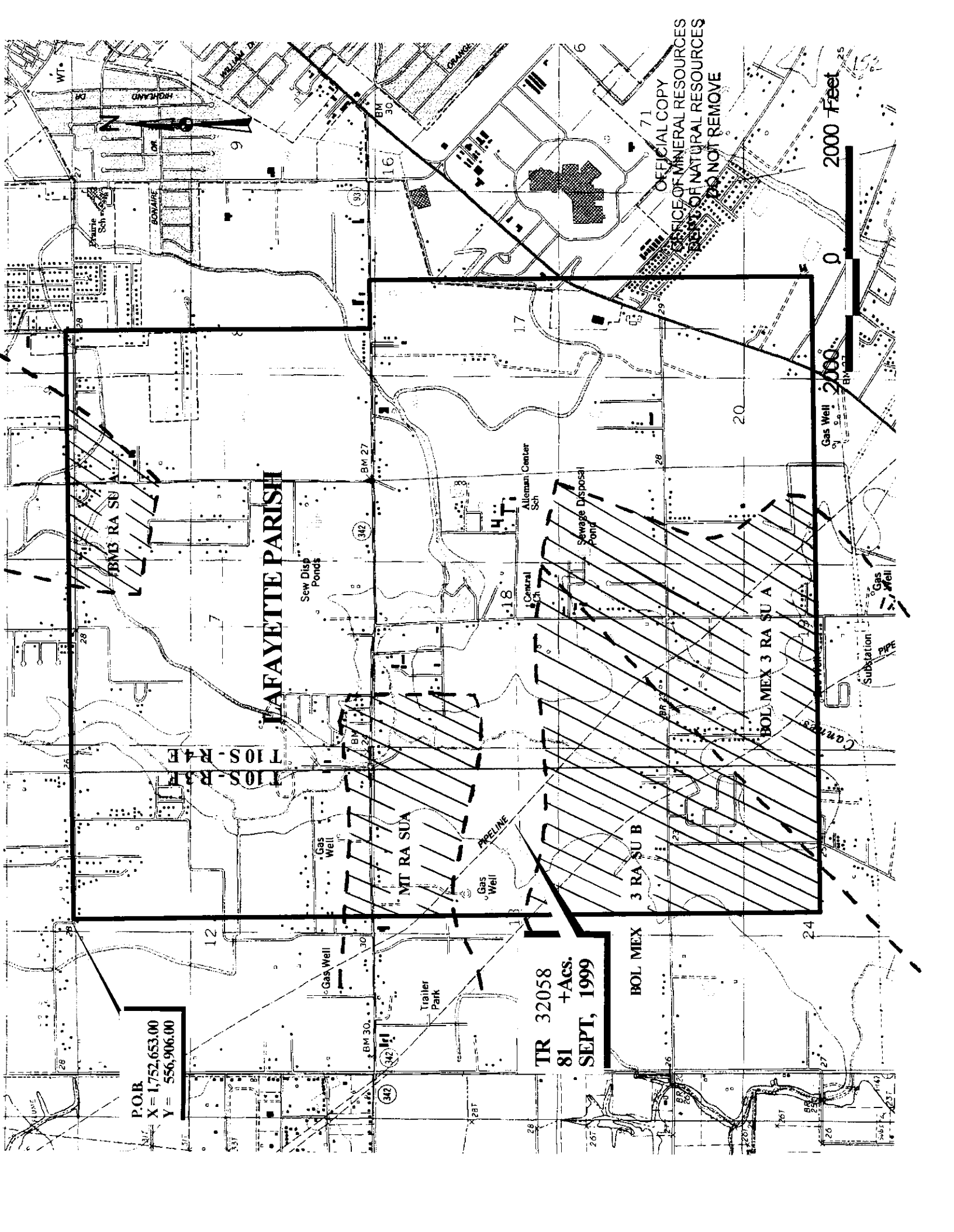
P.O.R.  
X = 1,752,653.00  
Y = 556,906.00

TR 32058  
81 +ACS.  
SEPT, 1999

# LAFAYETTE PARISH

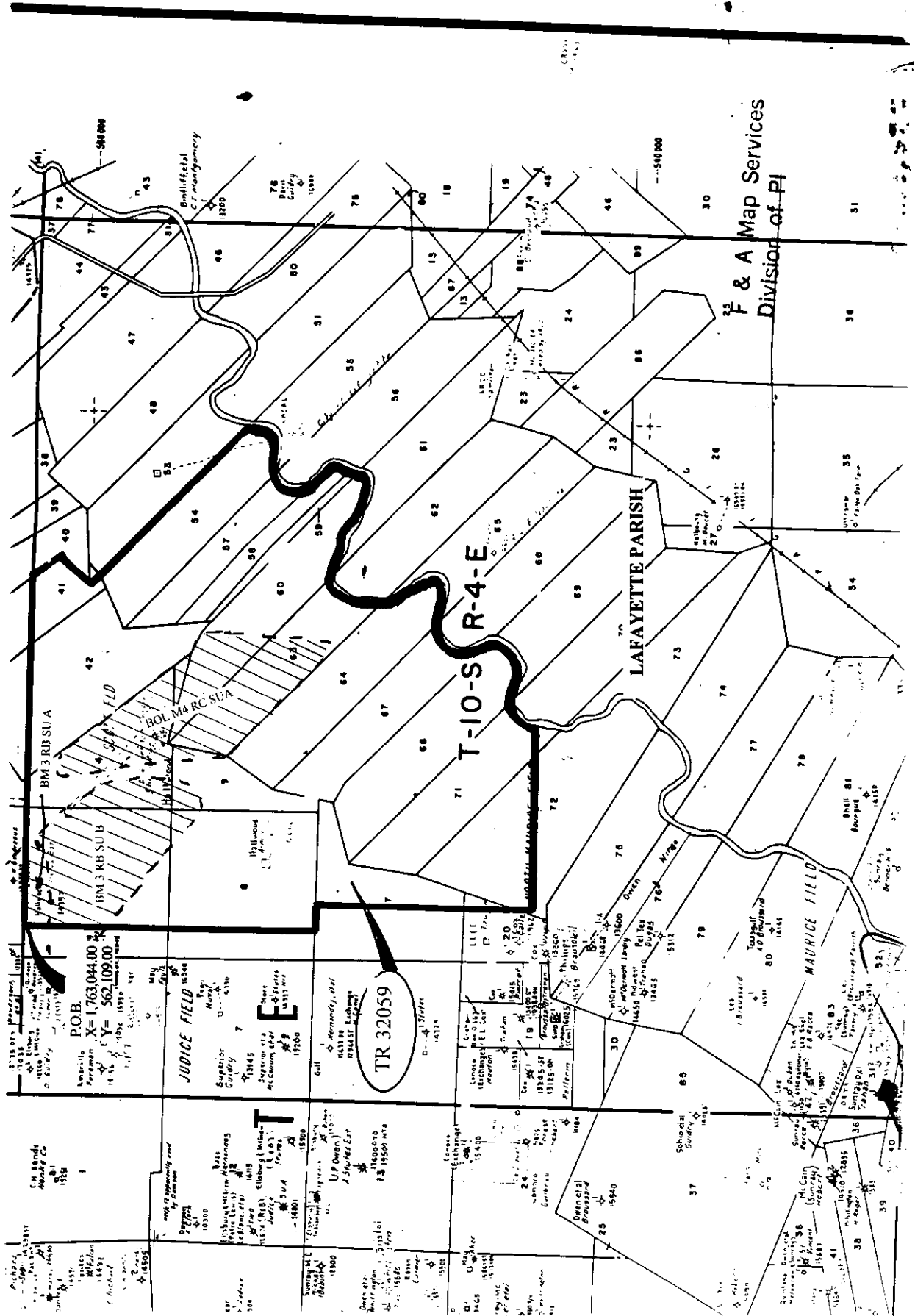
OFFICIAL COPY  
OFFICE OF MINERAL RESOURCES  
STATE OF LOUISIANA  
DO NOT REMOVE

2000 Feet



NOT TO BE USED WITH A PORTION BID  
FOR INFORMATIONAL PURPOSES ONLY !

MAP NOT TO SCALE



F & A Map Services  
Division of PJ

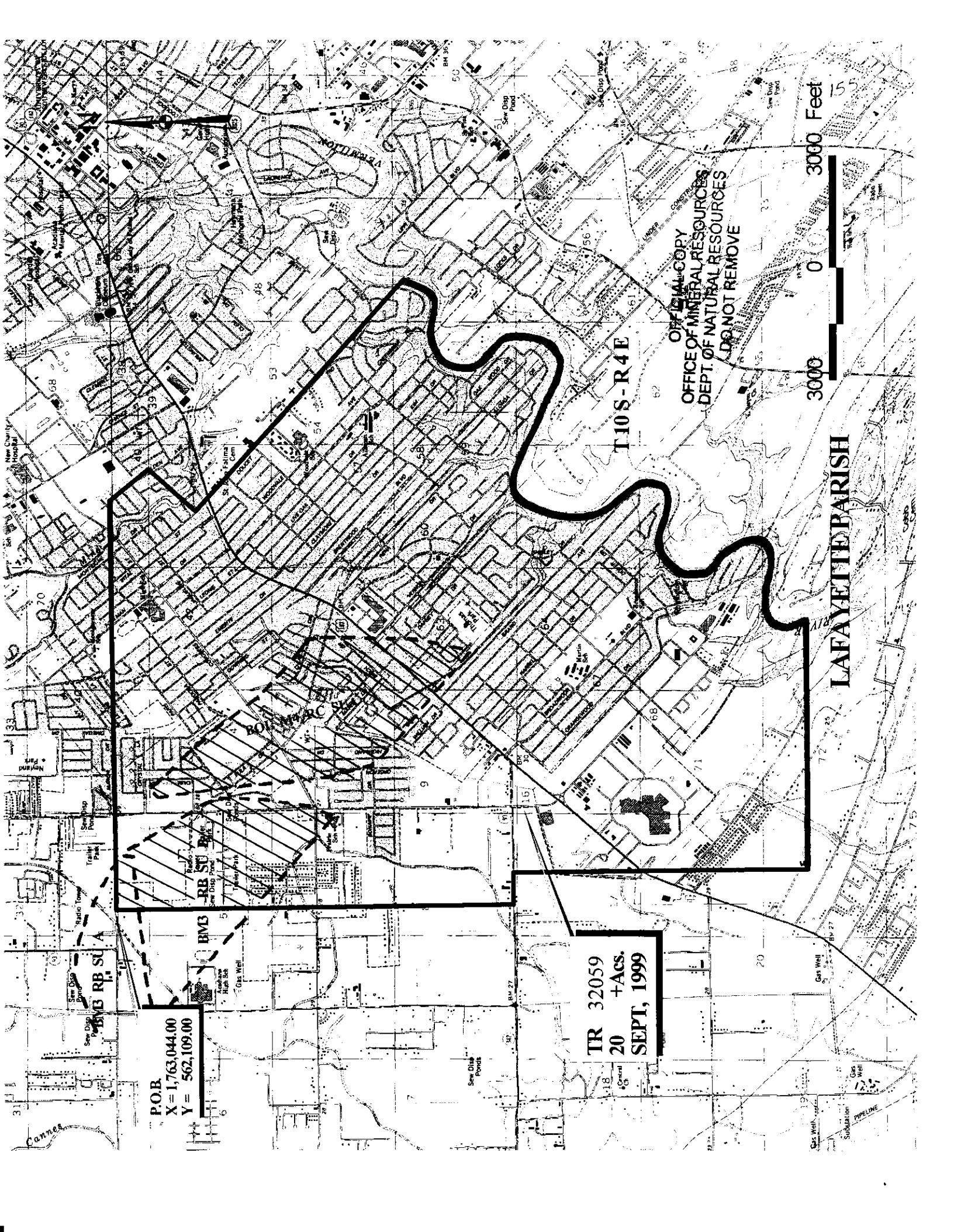
**TRACT 32059 - STATE AGENCY - Lafayette Parish, Louisiana**

A certain tract of land belonging to and not under mineral lease from the Louisiana Department of Transportation and Development, on September 8, 1999, being more fully described as follows: All of the rights, title and interest in any highways, right-of-ways, roads or other lands owned by and not presently under mineral lease from the Louisiana Department of Transportation and Development in Lafayette Parish, Louisiana, situated within the following described as: Beginning at a point having Coordinates of X = 1,763,044.00 and Y = 562,109.00; thence East 10,928.00 feet to a point having Coordinates of X = 1,773,972.00 and Y = 562,109.00 to a point; thence South 38 degrees 20 minutes 00 seconds East 1,345.00 feet to a point having Coordinates of X = 1,774,806.22 and Y = 561,053.96; thence South 42 degrees 30 minutes 00 seconds West 1,685.00 feet to a point having Coordinates of X = 1,773,667.85 and Y = 559,811.65; thence South 47 degrees 02 minutes 00 seconds East approximately 8,325 feet to a point of intersection with the right descending bank of the Vermilion River; thence with the right descending bank of the Vermilion River to a point of intersection with an East-West line having a Coordinate of Y = 543,629.00; thence West approximately 6,626 feet to a point having Coordinates of X = 1,763,902.00 and Y = 543,629.00; thence North 7,849.00 feet to a point; thence West 858.00 feet to a point having Coordinates of X = 1,763,044.00 and Y = 551,478.00; thence North 10,631.00 feet to the point of beginning **LESS AND EXCEPT** that portion lying within the Office of Conservation, geological units BOL M4 RC SUA, order no. 335-J-3; BM3 RB SUB and SUA, order no. 335-F-4; excluding beds and bottoms of all navigable waters, containing approximately 20 acres, as shown outlined in red on a plat on file in the Office of Mineral Resources, Department of Natural Resources. All bearings, distances and coordinates are based on Louisiana Coordinate System of 1927 (South Zone).

Applicant: F.K. Fontenot to Agency and by Letter of Authorization from the Louisiana Department of Transportation and Development authorizing the Mineral Board to act in its behalf.

Bidder	Cash Payment	Price/Acre	Rental	Oil	Gas	Other





P.O.B.  
X = 1,763,044.00  
Y = 562,109.00

TR 32059  
20 +ACS.  
SEPT, 1999

T.10S-R.4E

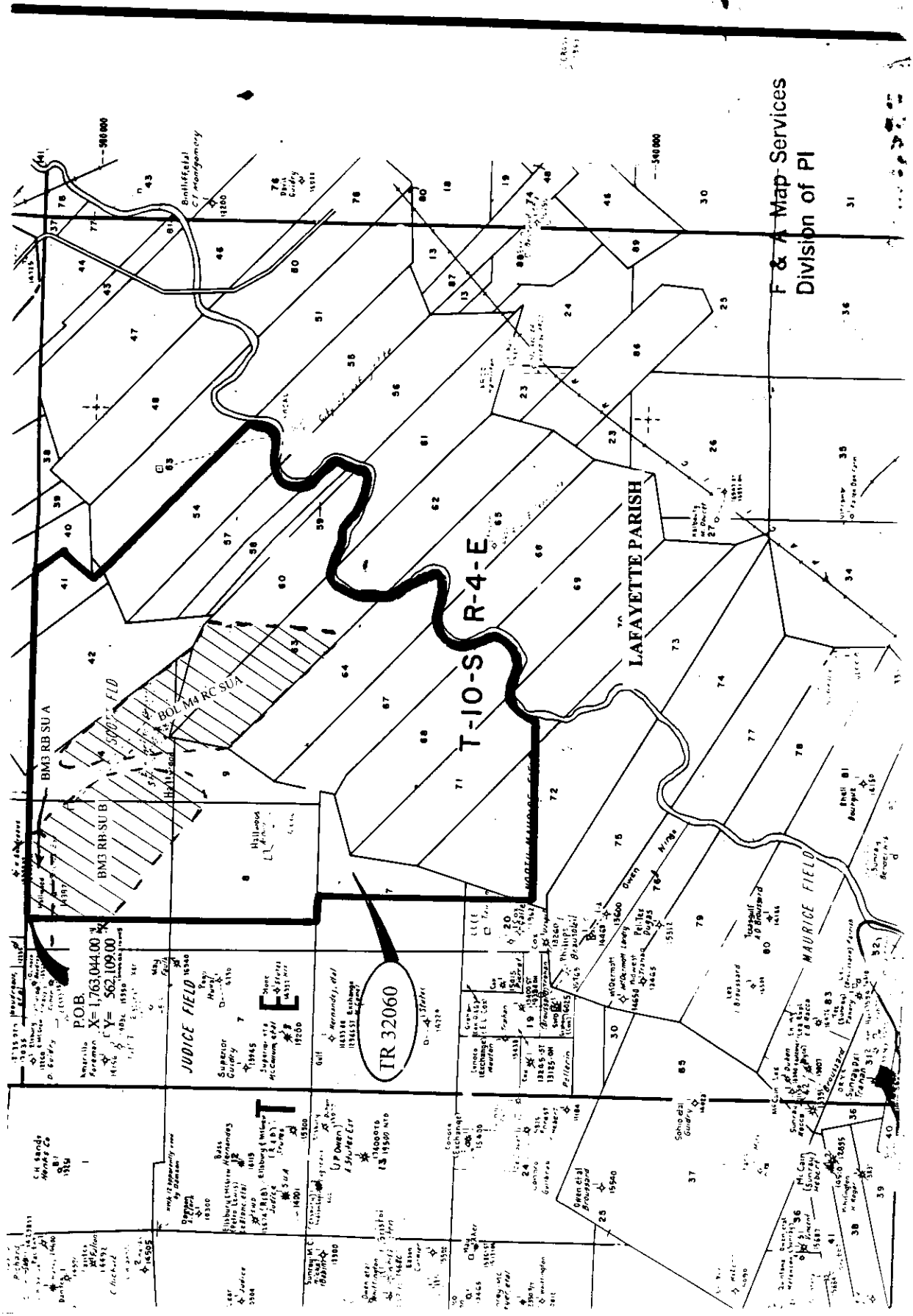
LAFAYETTE PARISH

OFFICIAL COPY  
OFFICE OF MINERAL RESOURCES  
DEPT. OF NATURAL RESOURCES  
DO NOT REMOVE

3000 0 3000 Feet

MAP NOT TO SCALE

NOT TO BE USED WITH A PORTION BID FOR INFORMATIONAL PURPOSES ONLY!



F & A Map Services  
Division of PI

**TRACT 32060 - STATE AGENCY - Lafayette Parish, Louisiana**

A certain tract of land belonging to and not under mineral lease from the Lafayette City-Parish Consolidated Government, on September 8, 1999, being more fully described as follows: All of the rights, title and interest in any highways, right-of-ways, roads or other lands owned by and not presently under mineral lease from the Lafayette City-Parish Consolidated Government in Lafayette Parish, Louisiana, situated within the following described area: Beginning at a point having Coordinates of X = 1,763,044.00 and Y = 562,109.00; thence East 10,928.00 feet to a point having Coordinates of X = 1,773,972.00 and Y = 562,109.00; thence South 38 degrees 20 minutes 00 seconds East 1,345.00 feet to a point having Coordinates of X = 1,774,806.22 and Y = 561,053.96; thence South 42 degrees 30 minutes 00 seconds West 1,685.00 feet to a point having Coordinates of X = 1,773,667.85 and Y = 559,811.65; thence South 47 degrees 02 minutes 00 seconds East approximately 8,325 feet to a point of intersection with the right descending bank of the Vermilion River; thence with the right descending bank of the Vermilion River to a point of intersection with an East-West line having a Coordinate of Y = 543,629.00; thence West approximately 6,626 feet to a point having Coordinates of X = 1,763,902.00 and Y = 543,629.00; thence North 7,849.00 feet to a point; thence West 858.00 feet to a point having Coordinates of X = 1,763,044.00 and Y = 551,478.00; thence North 10,631.00 feet to the point of beginning, **LESS AND EXCEPT** that portion lying within the Office of Conservation, geological units BOL M4 RC SUA, order no. 335-J-3; BM3 RB SUB and SUA, order no. 335-F-4, excluding beds and bottoms of all navigable waters, containing approximately 529 acres, as shown outlined in red on a plat on file in the Office of Mineral Resources, Department of Natural Resources. All bearings, distances and coordinates are based on Louisiana Coordinate System of 1927 (South Zone).

NOTE: Said lease must be subject to the provision that there shall be no drilling or surface operations on the lands vested in the Lafayette City-Parish Consolidated Government.

NOTE: Said lease must further provide that the lessee, or any assignee, shall be required to obtain consent from the Lafayette City-Parish Consolidated Government prior to the execution of any assignment.

NOTE: Said lease must further provide that the lessee shall at all times comply with all applicable environmental and wetlands laws and regulations promulgated by the federal government, the State of Louisiana and/or any department, office or agency thereof, and that the lessee shall obtain all licenses and/or permits required under such laws and regulations prior to commencement of any operations affecting the leased property.

Applicant: F.K. Fontenot to Agency and by Resolution of the Lafayette City-Parish Consolidated Government authorizing the Mineral Board to act in its behalf.

Bidder	Cash Payment	Price/Acre	Rental	Oil	Gas	Other

P.O.B.  
X= 1,763,044.00  
Y= 562,109.00

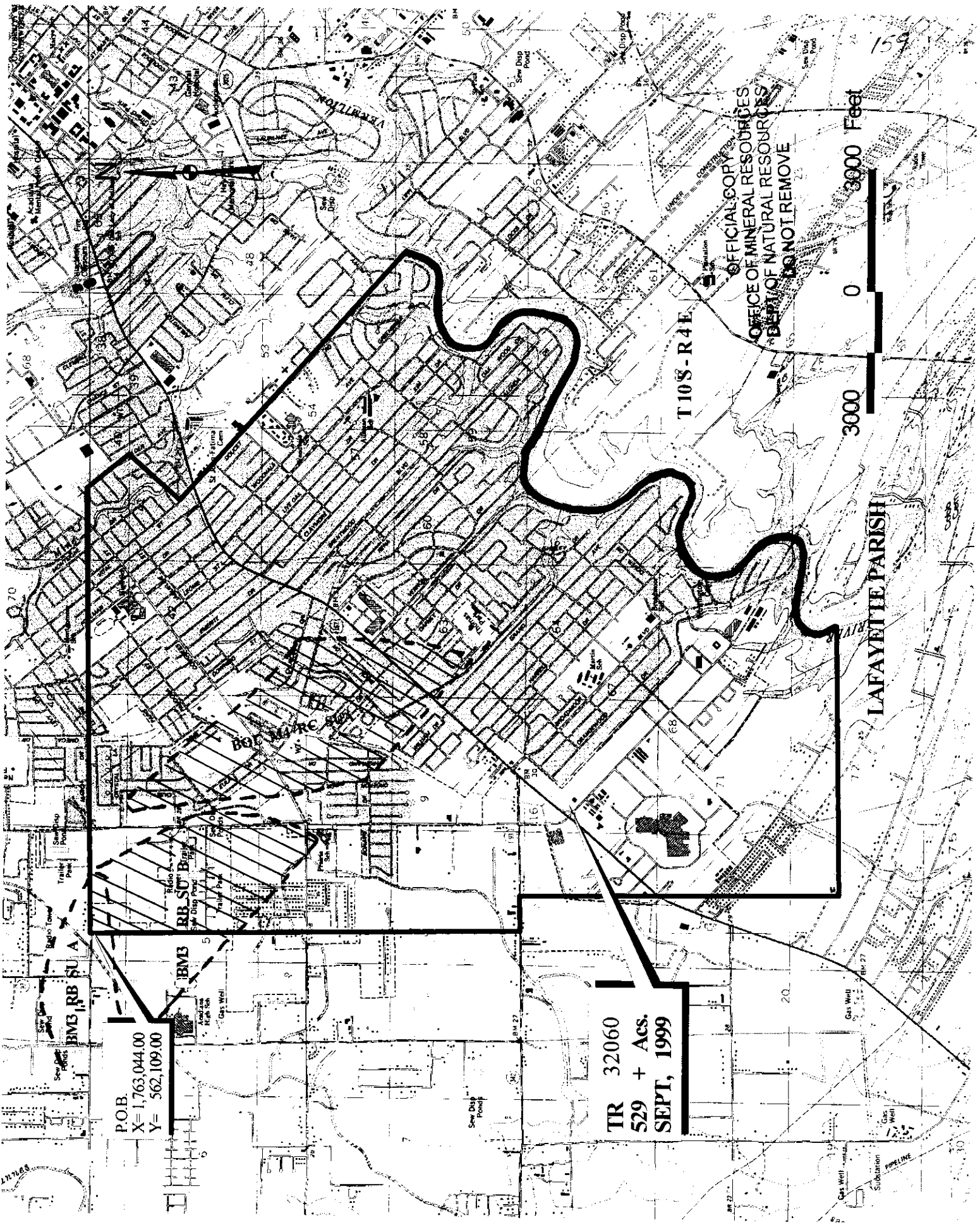
TR 32060  
529 + Acs.  
SEPT, 1999

T 10'S - R 4 E

LAFAYETTE PARISH

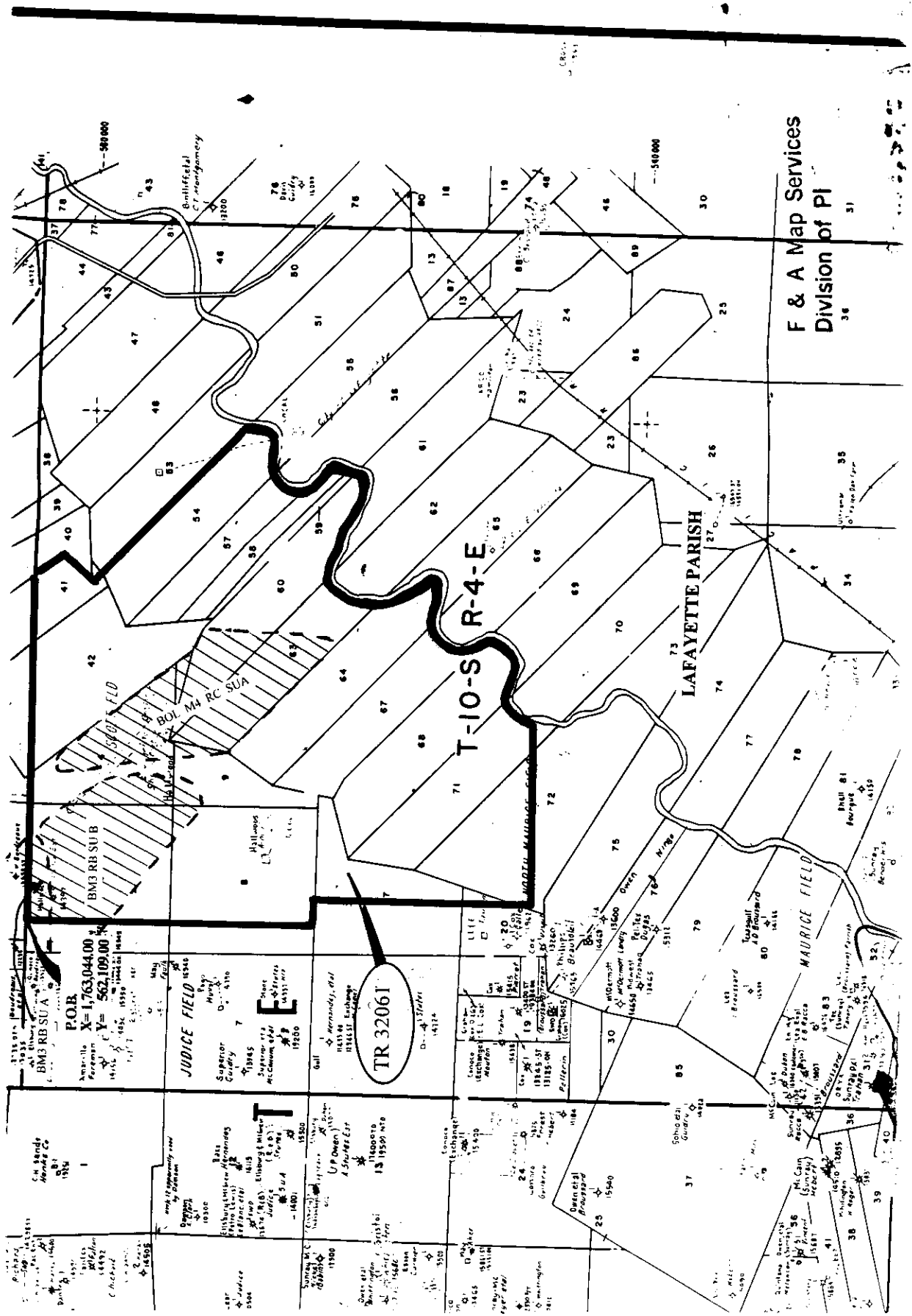
OFFICIAL COPY  
OFFICE OF MINERAL RESOURCES  
DEPT. OF NATURAL RESOURCES  
DO NOT REMOVE

3000 0 3000 Feet



MAP NOT TO SCALE

NOT TO BE USED WITH A PORTION BID FOR INFORMATIONAL PURPOSES ONLY!



F & A Map Services  
Division of PI

**TRACT 32061 - STATE AGENCY - Lafayette Parish, Louisiana**

A certain tract of land belonging to and not under mineral lease from the Lafayette Parish School Board, on September 8, 1999, being more fully described as follows: All of the rights, title and interest in any highways, right-of-ways, roads or other lands owned by and not presently under mineral lease from the Lafayette Parish School Board in Lafayette Parish, Louisiana, situated within the following described area: Beginning at a point having Coordinates of X = 1,763,044.00 and Y = 562,109.00; thence East 10,928.00 feet to a point having Coordinates of X = 1,773,972.00 and Y = 562,109.00; thence South 38 degrees 20 minutes 00 seconds East 1,345.00 feet to a point having Coordinates of X = 1,774,806.21 and Y = 561,053.96; thence South 42 degrees 30 minutes 00 seconds West 1,685.00 feet to a point having Coordinates of X = 1,773,667.85 and Y = 559,811.65; thence South 47 degrees 02 minutes 00 seconds East approximately 8,325 feet to a point of intersection with the right descending bank of the Vermilion River; thence with the right descending bank of the Vermilion River to a point of intersection with an East-West line having a Coordinate of Y = 543,629.00; thence West approximately 6,626 feet to a point having Coordinates of X = 1,763,902.00 and Y = 543,629.00; thence North 7,849.00 feet to a point; thence West 858.00 feet to a point having Coordinates of X = 1,763,044.00 and Y = 551,478.00; thence North 10,631.00 feet to the point of beginning, **LESS AND EXCEPT** that portion lying within the Office of Conservation, geological units BOL M4 RC SUA, order no. 335-J-3; BM3 RB SUB and SUA, order no. 335-F-4, excluding beds and bottoms of all navigable waters, containing approximately 145 acres, as shown outlined in red on a plat on file in the Office of Mineral Resources, Department of Natural Resources. All bearings, distances and coordinates are based on Louisiana Coordinate System of 1927 (South Zone).

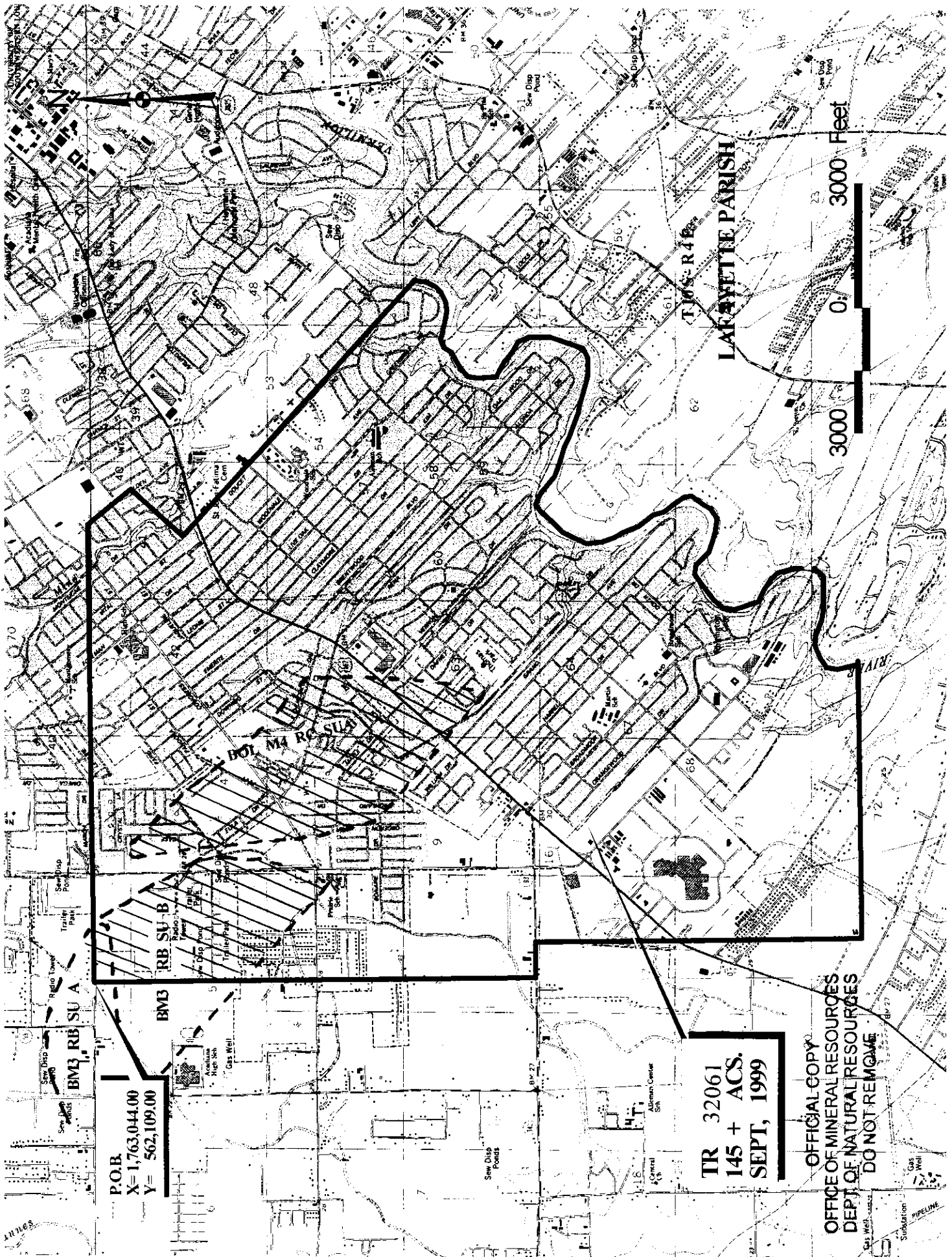
NOTE: Lessor requires a minimum royalty of twenty-five percent (25%) for oil and gas produced and saved and a minimum royalty of twenty percent (20%) for other liquid or gaseous hydrocarbon minerals produced and saved.

NOTE: "Lessee agrees not to erect any derrick, tank, warehouse or other equipment or structure on the leased premises nor shall lessee interfere, in any manner, with lessor's use of the property. Lessee shall have, however, the complete right to drill for, produce, extract and recover the minerals in and beneath said land by drilling or other operations conducted from the surface of other lands or by the pooling or unitization of the leased premises with other land, lease or leases in the area."

Applicant: F.K. Fontenot to Agency and by Resolution of the Lafayette Parish School Board authorizing the Mineral Board to act in its behalf.

Bidder	Cash Payment	Price/Acre	Rental	Oil	Gas	Other





P.O.B.  
X= 1,763,044.00  
Y= 562,109.00

TR 32061  
145 + ACS,  
SEPT, 1999

OFFICIAL COPY  
OFFICE OF MINERAL RESOURCES  
DEPT. OF NATURAL RESOURCES  
DO NOT REMIGATE

3000 0 3000 Feet

LAFAYETTE PARISH

TIGER R4

BOYD M. ROSS