

TRACT 45346 - Caddo and De Soto Parishes, Louisiana

All of the lands now or formerly constituting the beds and bottoms of all water bodies of every nature and description as to which title is vested in the State of Louisiana, together with all islands arising therein and other lands formed by accretion or by reliction, where allowed by law, excepting tax adjudicated lands, and not presently under mineral lease on August 12, 2020, situated in Caddo and De Soto Parishes, Louisiana, and more particularly described as follows: Beginning at a point being the Northwest corner of State Lease No. 18371, as amended, also being the Southeast corner of State Lease No. 20149 having Coordinates of X = 1,614,990.19 and Y = 600,313.81; thence North 00 degrees 07 minutes 56 seconds East 4,986.20 feet along the Eastern boundary of said State Lease No. 20149 to a point being its Northeast corner having Coordinates of X = 1,615,001.70 and Y = 605,300.00; thence North 89 degrees 59 minutes 58 seconds West 29.22 feet along the northern boundary of said State Lease No. 20149 to a point being the Southeast corner of State Lease No. 19459 having Coordinates of X = 1,614,972.48 and Y = 605,300.00; thence North 00 degrees 20 minutes 44 seconds East 195.50 feet along the eastern boundary of said State Lease No. 19459 to a point having Coordinates of X = 1,614,973.66 and Y = 605,495.50; thence South 88 degrees 57 minutes 10 seconds East 76.27 feet to a point being the Southwest corner of State Lease No. 20356 having Coordinates of X = 1,615,049.92 and Y = 605,494.10; thence along the Southern boundary of said State Lease No. 20356 the following: South 88 degrees 56 minutes 59 seconds East 5,181.47 feet to a point having Coordinates of X = 1,620,230.51 and Y = 605,399.12, and South 00 degrees 41 minutes 32 seconds West 22.33 feet to a point having Coordinates of X = 1,620,230.24 and Y = 605,376.80, and South 89 degrees 03 minutes 50 seconds East 4,853.11 feet to a point being the Southeast corner of said State Lease No. 20356, said corner being an interior corner on the Western boundary of State Lease No. 19929, having Coordinates of X = 1,625,082.70 and Y = 605,297.50; thence South 89 degrees 02 minutes 56 seconds East 10.24 feet along the Western boundary of said State Lease No. 19929 to the Northwest corner of State Lease No. 20800 having Coordinates of X = 1,625,092.94 and Y = 605,297.33; thence along the Western boundary of said State Lease No. 20800 the following: South 00 degrees 40 minutes 19 seconds West 3,422.41 feet to a point having Coordinates of X = 1,625,052.81 and Y = 601,875.16, and South 09 degrees 26 minutes 42 seconds East 1,755.60 feet to its Southwest corner, said corner being a point on the Northern boundary of State Lease No. 18371, as amended, having Coordinates of X = 1,625,340.90 and Y = 600,143.36; thence along the Northern boundary of said State Lease No. 18371, as amended, the following: North 89 degrees 16 minutes 30 seconds West 5,173.62 feet to a point having Coordinates of X = 1,620,167.70 and Y = 600,208.82; and North 86 degrees 42 minutes 27 seconds West 370.00 feet to a point having Coordinates of X = 1,619,798.31 and Y = 600,230.07, and North 89 degrees 00 minutes 08 seconds West 4,808.85 feet to the point of beginning, Containing approximately **565 acres**, all as more particularly outlined on a plat on file in the Office of Mineral Resources, Department of Natural Resources. All bearings, distances and coordinates are based on Louisiana Coordinate System of 1927, (North or South Zone), where applicable.

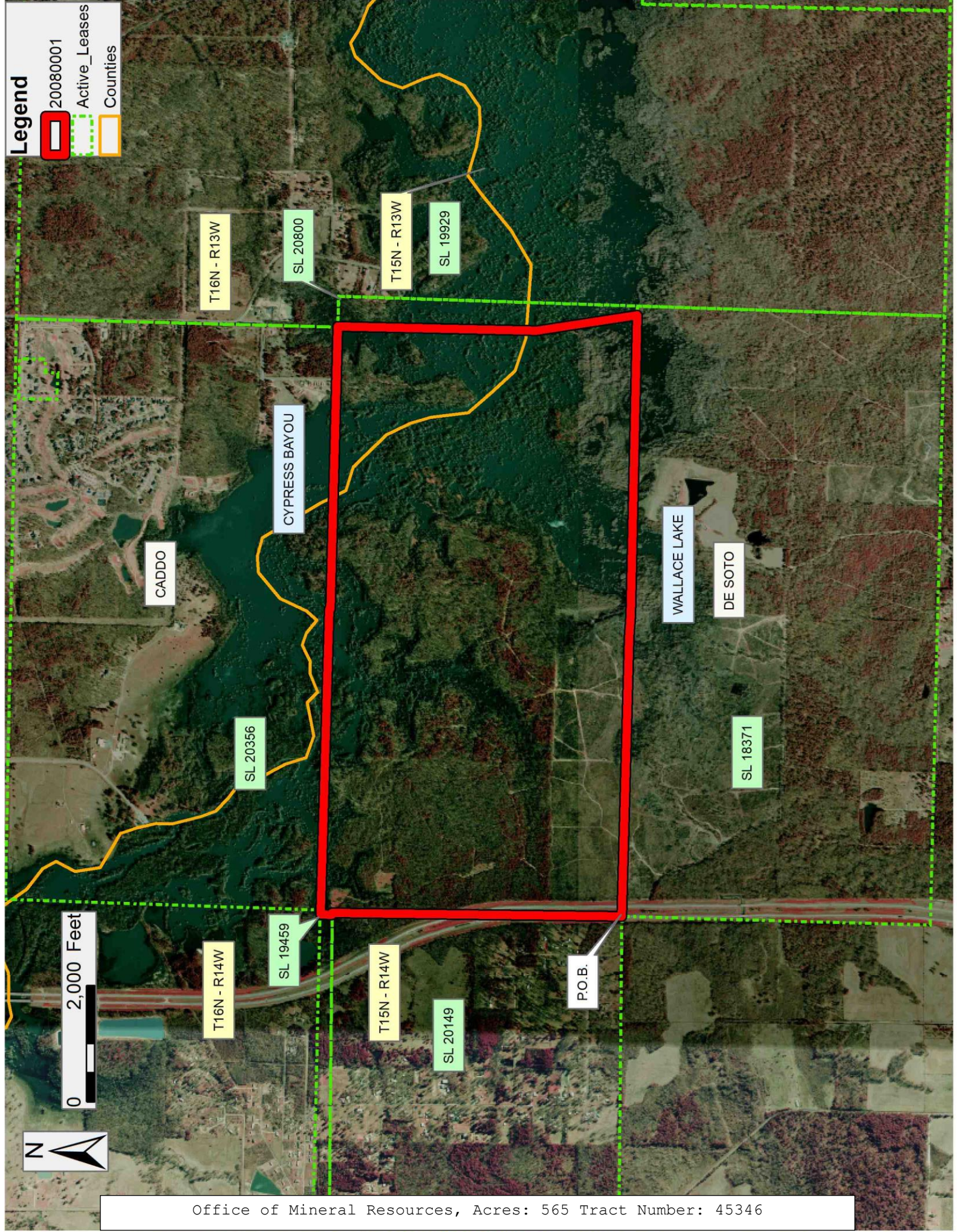
NOTE: The above description of the Tract nominated for lease has been provided and corrected, where required, exclusively by the nomination party. Any mineral lease selected from this Tract and awarded by the Louisiana State Mineral and Energy Board shall be without warranty of any kind, either express, implied, or statutory, including, but not limited to, the implied warranties of merchantability and fitness for a particular purpose. Should the mineral lease awarded by the Louisiana State Mineral and Energy Board be subsequently modified, cancelled or abrogated due to the existence of conflicting leases, operating agreements, private claims or other future obligations or conditions which may affect all or any portion of the leased Tract, it shall not relieve the Lessee of the obligation to pay any bonus due thereon to the Louisiana State Mineral and Energy Board, nor shall the Louisiana State Mineral and Energy Board be obligated to refund any consideration paid by the Lessor prior to such modification, cancellation, or abrogation, including, but not limited to, bonuses, rentals and royalties.

Applicant: WEBSTER HAYNES ENERGY

Bidder	Cash Payment	Price/Acre	Rental	Oil	Gas	Other

Legend

- 20080001
- Active_Leases
- Counties



Office of Mineral Resources, Acres: 565 Tract Number: 45346

TRACT 45347 - Concordia Parish, Louisiana

All of the lands now or formerly constituting the beds and bottoms of all water bodies of every nature and description as to which title is vested in the State of Louisiana, together with all islands arising therein and other lands formed by accretion or by reliction, where allowed by law, excepting tax adjudicated lands, and not presently under mineral lease on August 12, 2020, situated in Concordia Parish, Louisiana, and more particularly described as follows: Beginning at a point having Coordinates of X = 2,336,761.02 and Y = 372,648.82; thence East 2,640.00 feet to a point having Coordinates of X = 2,339,401.02 and Y = 372,648.82; thence South 2,640.00 feet to a point having Coordinates of X = 2,339,401.02 and Y = 370,008.82; thence West 2,640.00 feet to a point having Coordinates of X = 2,336,761.02 and Y = 370,008.82; thence North 2,640.00 feet to the point of beginning, containing approximately **69 acres**, all as more particularly outlined on a plat on file in the Office of Mineral Resources, Department of Natural Resources. All bearings, distances and coordinates are based on Louisiana Coordinate System of 1927, (North or South Zone), where applicable.

NOTE: The above description of the Tract nominated for lease has been provided and corrected, where required, exclusively by the nomination party. Any mineral lease selected from this Tract and awarded by the Louisiana State Mineral and Energy Board shall be without warranty of any kind, either express, implied, or statutory, including, but not limited to, the implied warranties of merchantability and fitness for a particular purpose. Should the mineral lease awarded by the Louisiana State Mineral and Energy Board be subsequently modified, cancelled or abrogated due to the existence of conflicting leases, operating agreements, private claims or other future obligations or conditions which may affect all or any portion of the leased Tract, it shall not relieve the Lessee of the obligation to pay any bonus due thereon to the Louisiana State Mineral and Energy Board, nor shall the Louisiana State Mineral and Energy Board be obligated to refund any consideration paid by the Lessor prior to such modification, cancellation, or abrogation, including, but not limited to, bonuses, rentals and royalties.

Applicant: THEOPHILUS OIL, GAS & LAND SERVICES, LLC

Bidder	Cash Payment	Price/Acre	Rental	Oil	Gas	Other

Legend

- 20080003
- Counties

CONCORDIA

T8N - R10E

P.O.B.

LAKE ST JOHN

