

**TRACT 44956 - Bossier Parish, Louisiana**

All of the lands now or formerly constituting the beds and bottoms of all water bodies of every nature and description as to which title is vested in the State of Louisiana, together with all islands arising therein and other lands formed by accretion or by reliction, where allowed by law, excepting tax adjudicated lands, and not presently under mineral lease on August 8, 2018, situated in Bossier Parish, Louisiana, and more particularly described as follows: Beginning at a point having Coordinates of X = 1,645,780.22 and Y = 657,596.32; thence South 86 degrees 27 minutes 06 seconds East 5,876.37 feet to a point having Coordinates of X = 1,651,645.33 and Y = 657,232.63; thence South 00 degrees 29 minutes 20 seconds West 10,633.01 feet to a point on the North boundary line of State Lease No. 20881, having Coordinates of X = 1,651,554.59 and Y = 646,600.00; thence West 5,826.50 feet along the boundary of said State Lease No. 20881 to a point on the East boundary line of State Lease No. 19349, as amended, having Coordinates of X = 1,645,728.10 and Y = 646,600.00; thence North 00 degrees 00 minutes 03 seconds West 5,445.02 feet along the boundary of said State Lease No. 19349, as amended, to a point being its Northwest corner having Coordinates of X = 1,645,728.02 and Y = 652,045.02; thence North 00 degrees 32 minutes 20 seconds East 5,551.55 feet to the point of beginning, containing approximately **49.445 acres**, all as more particularly outlined on a plat on file in the Office of Mineral Resources, Department of Natural Resources. All bearings, distances and coordinates are based on Louisiana Coordinate System of 1927, (North or South Zone), where applicable.

NOTE: The above description of the Tract nominated for lease has been provided and corrected, where required, exclusively by the nomination party. Any mineral lease selected from this Tract and awarded by the Louisiana State Mineral and Energy Board shall be without warranty of any kind, either express, implied, or statutory, including, but not limited to, the implied warranties of merchantability and fitness for a particular purpose. Should the mineral lease awarded by the Louisiana State Mineral and Energy Board be subsequently modified, cancelled or abrogated due to the existence of conflicting leases, operating agreements, private claims or other future obligations or conditions which may affect all or any portion of the leased Tract, it shall not relieve the Lessee of the obligation to pay any bonus due thereon to the Louisiana State Mineral and Energy Board, nor shall the Louisiana State Mineral and Energy Board be obligated to refund any consideration paid by the Lessor prior to such modification, cancellation, or abrogation, including, but not limited to, bonuses, rentals and royalties.

NOTE: The Office of Mineral Resources will require a minimum bonus of \$1500 per acre and a minimum royalty of 25%.

Applicant: STAFF OFFICE OF MINERAL RESOURCES

Bidder	Cash Payment	Price/Acre	Rental	Oil	Gas	Other

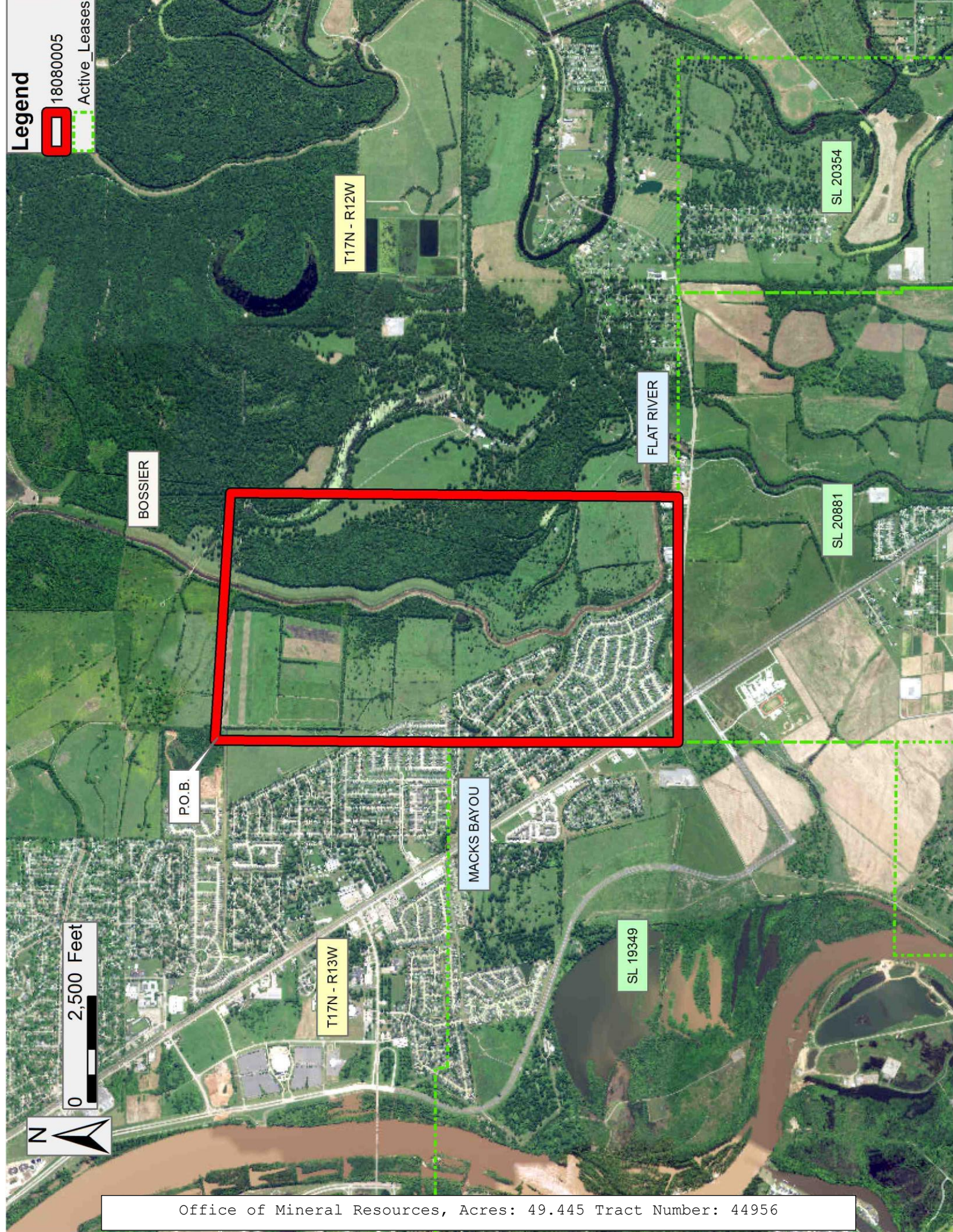


**Legend**



18080005

Active\_Leases



Office of Mineral Resources, Acres: 49.445 Tract Number: 44956