

TRACT 44764 - Union Parish, Louisiana

All of the lands now or formerly constituting the beds and bottoms of all water bodies of every nature and description as to which title is vested in the State of Louisiana, together with all islands arising therein and other lands formed by accretion or by reliction, where allowed by law, excepting tax adjudicated lands, and not presently under mineral lease on August 9, 2017, situated in Union Parish, Louisiana, and more particularly described as follows: Beginning at a point having Coordinates of X = 2,020,767.25 and Y = 822,755.21; thence South 35 degrees 00 minutes 00 seconds East 18,480.00 feet to a point on the Northern boundary of State Lease No. 21320 having Coordinates of X = 2,031,366.94 and Y = 807,617.28; thence West 11,549.97 feet along the Northern boundary of said State Lease No. 21320 to a point being its Northwest corner having Coordinates of X = 2,019,816.97 and Y = 807,617.28; thence West 6,930.03 feet to a point having Coordinates of X = 2,012,886.94 and Y = 807,617.28; thence North 35 degrees 00 minutes 00 seconds West 18,480.00 feet to a point having Coordinates of X = 2,002,287.25 and Y = 822,755.21; thence East 18,480.00 feet to the point of beginning, **LESS AND EXCEPT** any right, title, and interest in lands owned by and not under lease from the State of Louisiana, on behalf of the Union Parish School Board, situated in Section 16, Township 22 North, Range 1 West, Union Parish Louisiana, contained within the above described tract, containing approximately **33 acres**, all as more particularly outlined on a plat on file in the Office of Mineral Resources, Department of Natural Resources. All bearings, distances and coordinates are based on Louisiana Coordinate System of 1927, (North or South Zone), where applicable.

NOTE: The above description of the Tract nominated for the purpose of acquiring a mineral lease or a geophysical agreement has been provided and corrected, where required, exclusively by the nominating party. Any mineral lease or geophysical agreement selected from this Tract and awarded by the Louisiana State Mineral and Energy Board shall be without warranty of any kind, either express, implied or statutory including, but not limited to, title or the implied warranties of merchantability and fitness for a particular purpose.

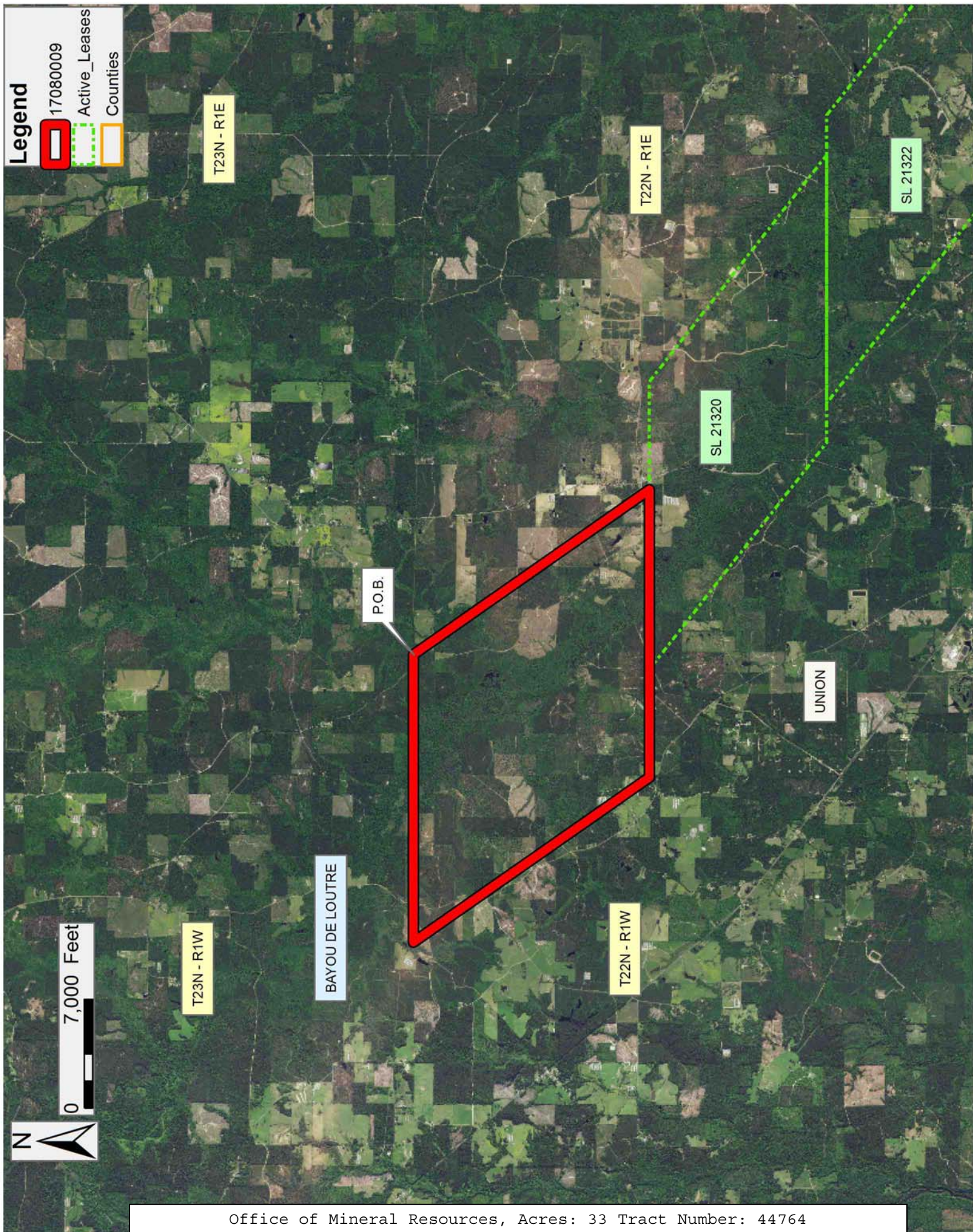
An error or omission in the nominating party's Tract description may require that a State mineral lease or geophysical agreement be modified, canceled or abrogated due to the existence of conflicting leases, operating agreements, private claims or other future obligations or conditions within the Tract described. In such case, however, the Louisiana State Mineral and Energy Board shall not be obligated to refund any consideration paid by the Lessee prior to such modification, cancellation or abrogation including, but not limited to, bonuses, rentals and royalties.

NOTE: A portion of this tract is located on or adjacent to a Louisiana designated Natural and Scenic River. The applicant must obtain authorization from the Louisiana Department of Wildlife and Fisheries, Scenic Rivers Program prior to initiating any activities within or

adjacent to the river, including, but not limited to, crossings by roads and pipelines, well sites, production facilities and water withdrawals.

Applicant: DUDLEY LAND COMPANY

Bidder	Cash Payment	Price/ Acre	Rental	Oil	Gas	Other



TRACT 44765 - Red River Parish, Louisiana

All of the lands now or formerly constituting the beds and bottoms of all water bodies of every nature and description as to which title is vested in the State of Louisiana, together with all islands arising therein and other lands formed by accretion or by reliction, where allowed by law, excepting tax adjudicated lands, and not presently under mineral lease on August 9, 2017, situated in Red River Parish, Louisiana, and more particularly described as follows: Beginning at the Southernmost Southwest corner of State Lease No. 20475, also being a point on the East boundary of State Lease No. 19124 having Coordinates of X = 1,698,526.00 and Y = 556,862.16; thence along the boundary of said State Lease No. 20475 the following courses: South 89 degrees 29 minutes 04 seconds East 4,533.49 feet to a point having Coordinates of X = 1,703,059.31 and Y = 556,821.37, South 06 degrees 10 minutes 47 seconds West 611.52 feet to a point having Coordinates of X = 1,702,993.48 and Y = 556,213.40, and South 89 degrees 29 minutes 34 seconds East 477.81 feet to its Southeast corner, also being the Northwest corner of State Lease No. 20478 having Coordinates of X = 1,703,471.27 and Y = 556,209.17; thence along the boundary of said State Lease No. 20478 the following courses: South 00 degrees 30 minutes 24 seconds West 2,540.81 feet to a point having Coordinates of X = 1,703,448.80 and Y = 553,668.46, South 43 degrees 34 minutes 45 seconds East 348.75 feet to a point having Coordinates of X = 1,703,689.21 and Y = 553,415.82, and South 00 degrees 30 minutes 23 seconds West 1,880.86 feet to its Southeast corner, also being a point on the Northern boundary of the Southwestern portion of State Lease No. 19769, as amended, having Coordinates of X = 1,703,672.59 and Y = 551,535.03; thence North 89 degrees 25 minutes 04 seconds West 5,146.86 feet along the Northern boundary of said portion of State Lease No. 19769 to its Northwest corner, also being a point on the Eastern boundary of said State Lease No. 19124 having Coordinates of X = 1,698,526.00 and Y = 551,587.32; thence North 5,274.83 feet along the East boundary of said State Lease No. 19124 to the point of beginning, containing approximately **44 acres**, all as more particularly outlined on a plat on file in the Office of Mineral Resources, Department of Natural Resources. All bearings, distances and coordinates are based on Louisiana Coordinate System of 1927, (North or South Zone), where applicable.

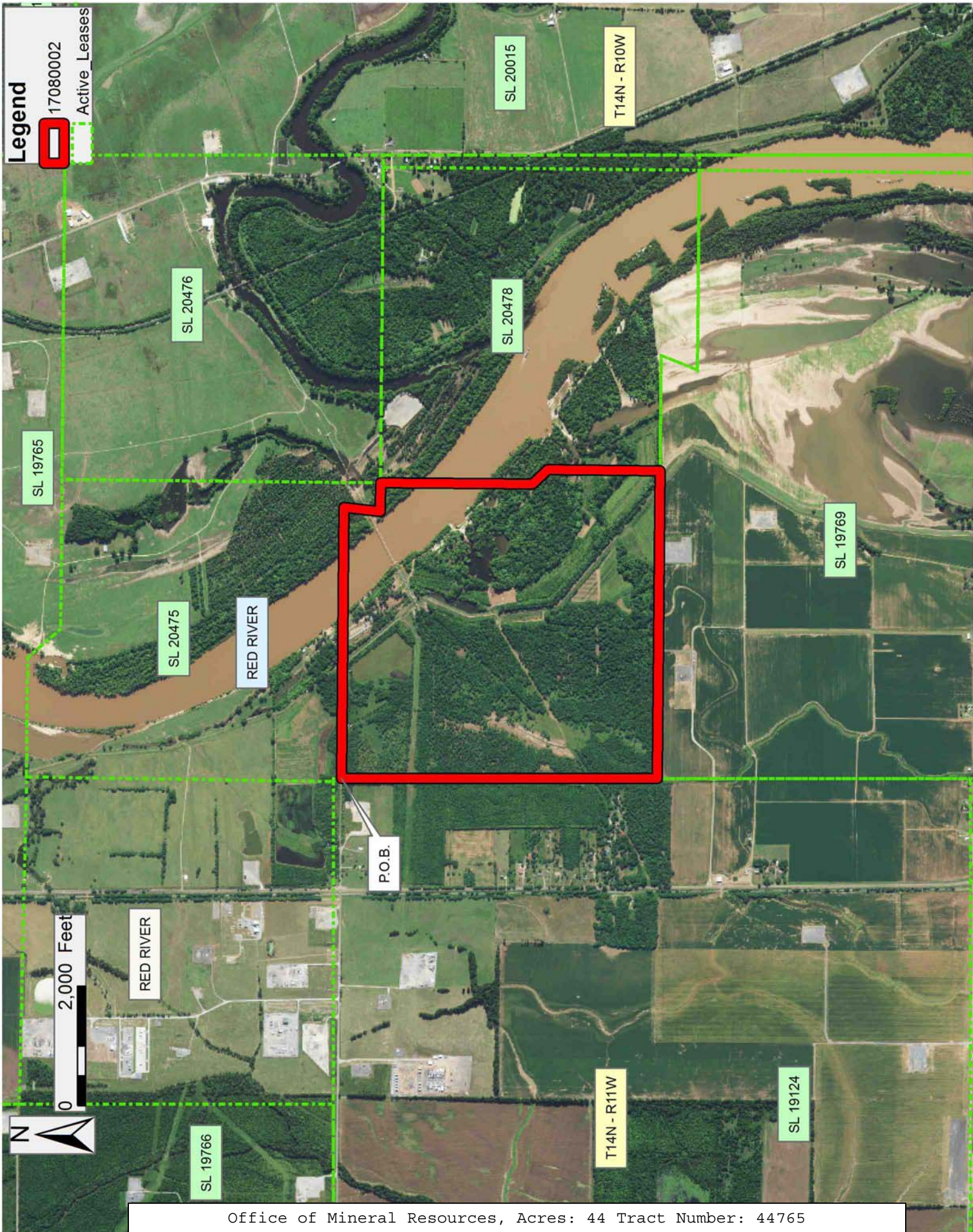
NOTE: The above description of the Tract nominated for the purpose of acquiring a mineral lease or a geophysical agreement has been provided and corrected, where required, exclusively by the nominating party. Any mineral lease or geophysical agreement selected from this Tract and awarded by the Louisiana State Mineral and Energy Board shall be without warranty of any kind, either express, implied or statutory including, but not limited to, title or the implied warranties of merchantability and fitness for a particular purpose.

An error or omission in the nominating party's Tract description may require that a State mineral lease or geophysical agreement be modified, canceled or abrogated due to the existence of conflicting leases,

operating agreements, private claims or other future obligations or conditions within the Tract described. In such case, however, the Louisiana State Mineral and Energy Board shall not be obligated to refund any consideration paid by the Lessee prior to such modification, cancellation or abrogation including, but not limited to, bonuses, rentals and royalties.

Applicant: THEOPHILUS OIL, GAS & LAND SERVICES, LLC

Bidder	Cash Payment	Price/ Acre	Rental	Oil	Gas	Other



TRACT 44766 - Vermilion Parish, Louisiana

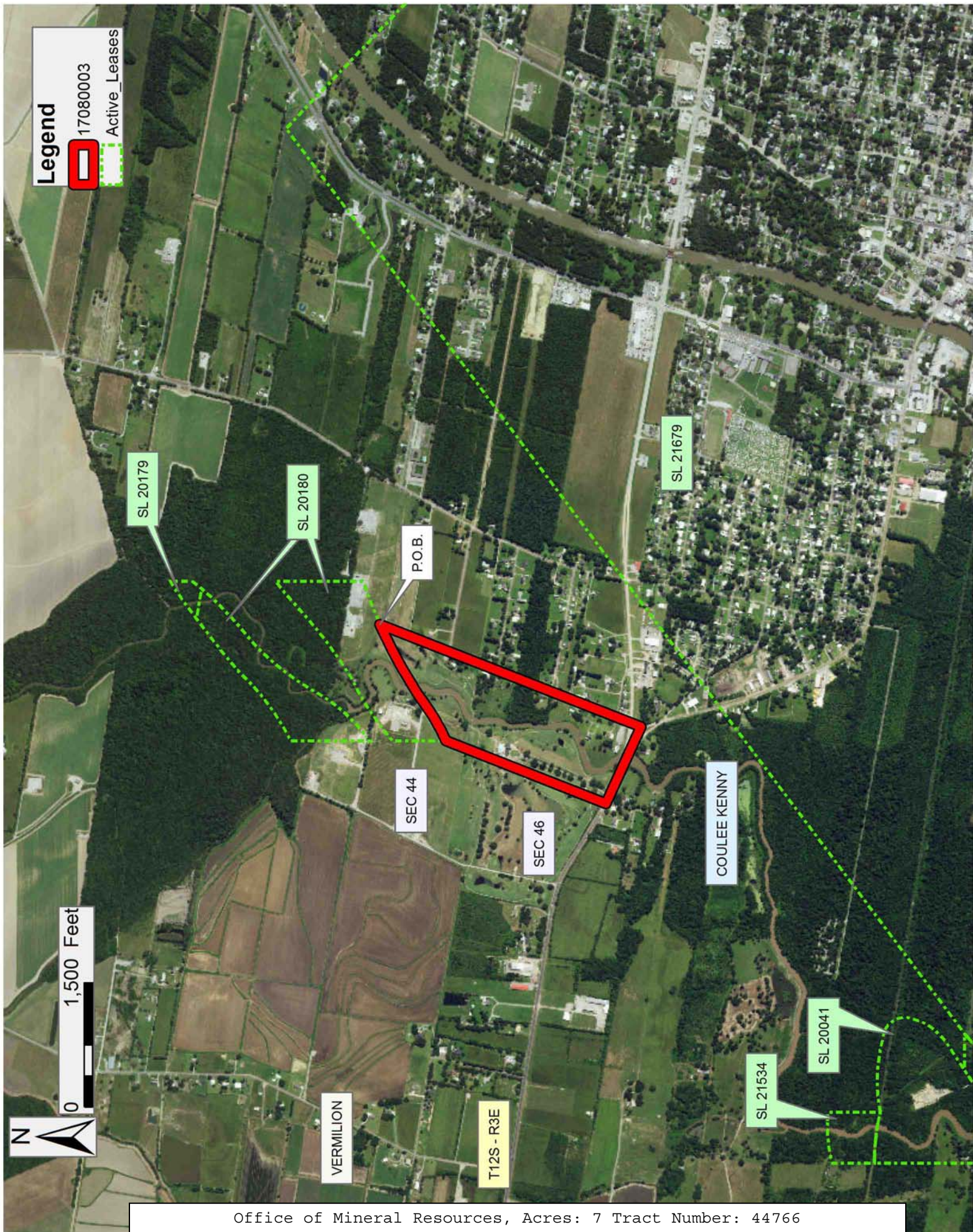
All of the lands now or formerly constituting the beds and bottoms of all water bodies of every nature and description as to which title is vested in the State of Louisiana, together with all islands arising therein and other lands formed by accretion or by reliction, where allowed by law, excepting tax adjudicated lands, and not presently under mineral lease on August 9, 2017, situated in Vermilion Parish, Louisiana, and more particularly described as follows: Beginning at a point on the boundary of State Lease No. 20180 having Coordinates of X = 1,741,284.32 and Y = 483,196.01; thence South 21 degrees 23 minutes 52 seconds West 3,375.90 feet to a point having Coordinates of X = 1,740,052.65 and Y = 480,052.81; thence North 65 degrees 27 minutes 46 seconds West 1,018.02 feet to a point having the Coordinates X = 1,739,126.57 and Y = 480,475.58; thence North 21 degrees 23 minutes 52 seconds East 2,070.22 feet to a point on the boundary of said State Lease No. 20180 having the Coordinates X = 1,739,881.87 and Y = 482,403.10; thence Northeasterly along a curve to the left having a chord bearing of North 61 degrees 37 minutes 14 seconds East, a chord distance of 409.37 feet, a radius of 2,027.21 feet, a delta angle of 11 degrees 35 minutes 24 seconds, and an arc distance of 410.07 feet to a point on State Lease No. 20180 having the Coordinates X = 1,740,242.04 and Y = 482,597.68; thence Northeasterly along a curve to the right having a chord bearing of North 60 degrees 08 minutes 29 seconds East, a chord distance of 1,201.81 feet, a radius of 5,859.94 feet, a delta angle of 11 degrees 46 minutes 17 seconds, and an arc distance of 1,203.93 feet to the point of beginning, containing approximately **7 acres**, all as more particularly outlined on a plat on file in the Office of Mineral Resources, Department of Natural Resources. All bearings, distances and coordinates are based on Louisiana Coordinate System of 1927, (North or South Zone), where applicable.

NOTE: The above description of the Tract nominated for the purpose of acquiring a mineral lease or a geophysical agreement has been provided and corrected, where required, exclusively by the nominating party. Any mineral lease or geophysical agreement selected from this Tract and awarded by the Louisiana State Mineral and Energy Board shall be without warranty of any kind, either express, implied or statutory including, but not limited to, title or the implied warranties of merchantability and fitness for a particular purpose.

An error or omission in the nominating party's Tract description may require that a State mineral lease or geophysical agreement be modified, canceled or abrogated due to the existence of conflicting leases, operating agreements, private claims or other future obligations or conditions within the Tract described. In such case, however, the Louisiana State Mineral and Energy Board shall not be obligated to refund any consideration paid by the Lessee prior to such modification, cancellation or abrogation including, but not limited to, bonuses, rentals and royalties.

Applicant: ANGELLE & DONOHUE OIL & GAS PROPERTIES, INC.

Bidder	Cash Payment	Price/ Acre	Rental	Oil	Gas	Other



TRACT 44767 - Vermilion Parish, Louisiana

All of the lands now or formerly constituting the beds and bottoms of all water bodies of every nature and description as to which title is vested in the State of Louisiana, together with all islands arising therein and other lands formed by accretion or by reliction, where allowed by law, excepting tax adjudicated lands, and not presently under mineral lease on August 9, 2017, situated in Vermilion Parish, Louisiana, and more particularly described as follows: Beginning at a point having Coordinates of X = 1,740,231.15 and Y = 479,971.32; thence South 21 degrees 23 minutes 52 seconds West 1,386.55 feet to a point having Coordinates of X = 1,739,725.28 and Y = 478,680.35; thence South 53 degrees 09 minutes 27 seconds West 985.47 feet to a point having Coordinates X = 1,738,936.62 and Y = 478,089.44; thence North 80 degrees 27 minutes 57 seconds West 708.85 feet to a point having Coordinates X = 1,738,237.57 and Y = 478,206.85; thence North 21 degrees 23 minutes 52 seconds East 2,436.69 feet to a point having Coordinates of X = 1,739,126.57 and Y = 480,475.58; thence South 65 degrees 27 minutes 46 seconds East 1,214.24 feet to the point of beginning, containing approximately **7 acres**, all as more particularly outlined on a plat on file in the Office of Mineral Resources, Department of Natural Resources. All bearings, distances and coordinates are based on Louisiana Coordinate System of 1927, (North or South Zone), where applicable.

NOTE: The above description of the Tract nominated for the purpose of acquiring a mineral lease or a geophysical agreement has been provided and corrected, where required, exclusively by the nominating party. Any mineral lease or geophysical agreement selected from this Tract and awarded by the Louisiana State Mineral and Energy Board shall be without warranty of any kind, either express, implied or statutory including, but not limited to, title or the implied warranties of merchantability and fitness for a particular purpose.

An error or omission in the nominating party's Tract description may require that a State mineral lease or geophysical agreement be modified, canceled or abrogated due to the existence of conflicting leases, operating agreements, private claims or other future obligations or conditions within the Tract described. In such case, however, the Louisiana State Mineral and Energy Board shall not be obligated to refund any consideration paid by the Lessee prior to such modification, cancellation or abrogation including, but not limited to, bonuses, rentals and royalties.

Applicant: ANGELLE & DONOHUE OIL & GAS PROPERTIES, INC.

Bidder	Cash Payment	Price/ Acre	Rental	Oil	Gas	Other



TRACT 44768 - Vermilion Parish, Louisiana

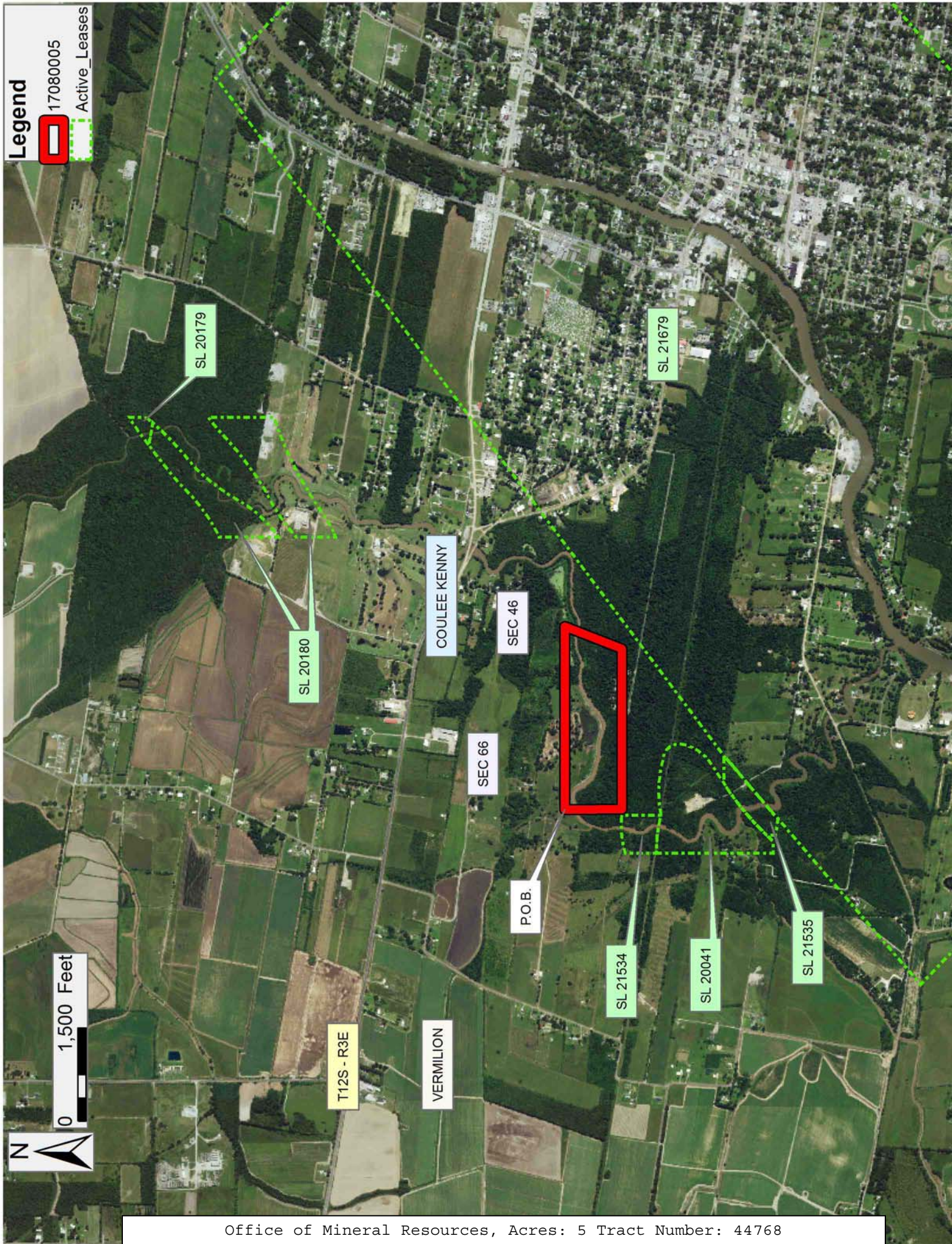
All of the lands now or formerly constituting the beds and bottoms of all water bodies of every nature and description as to which title is vested in the State of Louisiana, together with all islands arising therein and other lands formed by accretion or by reliction, where allowed by law, excepting tax adjudicated lands, and not presently under mineral lease on August 9, 2017, situated in Vermilion Parish, Louisiana, and more particularly described as follows: Beginning at a point having Coordinates of X = 1,735,494.19 and Y = 478,715.51; thence North 89 degrees 58 minutes 13 seconds East 2,943.30 feet to a point having Coordinates of X = 1,738,437.49 and Y = 478,717.05; thence South 21 degrees 23 minutes 52 seconds West 987.82 feet to a point having the Coordinates X = 1,738,077.09 and Y = 477,797.32; thence South 89 degrees 59 minutes 56 seconds West 2,582.41 feet to a point having the Coordinates of X = 1,735,494.68 and Y = 477,797.26; thence North 00 degrees 01 minutes 51 seconds West 918.25 feet to the point of beginning, containing approximately **5 acres**, all as more particularly outlined on a plat on file in the Office of Mineral Resources, Department of Natural Resources. All bearings, distances and coordinates are based on Louisiana Coordinate System of 1927, (North or South Zone), where applicable.

NOTE: The above description of the Tract nominated for the purpose of acquiring a mineral lease or a geophysical agreement has been provided and corrected, where required, exclusively by the nominating party. Any mineral lease or geophysical agreement selected from this Tract and awarded by the Louisiana State Mineral and Energy Board shall be without warranty of any kind, either express, implied or statutory including, but not limited to, title or the implied warranties of merchantability and fitness for a particular purpose.

An error or omission in the nominating party's Tract description may require that a State mineral lease or geophysical agreement be modified, canceled or abrogated due to the existence of conflicting leases, operating agreements, private claims or other future obligations or conditions within the Tract described. In such case, however, the Louisiana State Mineral and Energy Board shall not be obligated to refund any consideration paid by the Lessee prior to such modification, cancellation or abrogation including, but not limited to, bonuses, rentals and royalties.

Applicant: ANGELLE & DONOHUE OIL & GAS PROPERTIES, INC.

Bidder	Cash Payment	Price/ Acre	Rental	Oil	Gas	Other



TRACT 44769 - Portion of Blocks 1, and 2, Breton Sound Area, Blocks 68, and 69, Chandeleur Sound Area, St. Bernard Parish, Louisiana

All of the lands now or formerly constituting the beds and bottoms of all water bodies of every nature and description as to which title is vested in the State of Louisiana, together with all islands arising therein and other lands formed by accretion or by reliction, where allowed by law, excepting tax adjudicated lands, and not presently under mineral lease on August 9, 2017, situated in St. Bernard Parish, Louisiana, and more particularly described as follows: Beginning at a point within Block 68, Chandeleur Sound Area, having Coordinates of X = 2,650,523.48 and Y = 381,833.00; thence South 503.00 feet to a point on the common block line between Block 68, Chandeleur Sound Area and Block 2, Breton Sound Area having Coordinates of X = 2,650,523.48 and Y = 381,330.00; thence South 6,674.00 feet to a point having Coordinates of X = 2,650,523.48; and Y = 374,656.00; thence West 423.48 feet to a point on the common block line between said Block 2, Breton Sound Area, and Block 1, Breton Sound Area, having Coordinates of X = 2,650,100.00 and Y = 374,656.00; thence West 14,750.00 feet to a point on the common block line between said Block 1, Breton Sound Area and Block 4, Main Pass Area, Revised, having Coordinates of X = 2,635,350.00; and Y = 374,656.00; thence North 3,274.00 feet to the Southeast corner of State Lease No. 16300 having Coordinates of X = 2,635,350.00 and Y = 377,930.00; thence continue North 1,943.60 feet along the East boundary of said State Lease No. 16300 to its Northeast corner having Coordinates of X = 2,635,350.00 and Y = 379,873.60; thence continue North 1,456.40 feet to the Northwest corner of said Block 1, Breton Sound Area having Coordinates of X = 2,635,350.00 and Y = 381,330.00; thence continue North 503.00 feet along the common block line between said Block 70, Chandeleur Sound Area and Block 69, Chandeleur Sound Area, having Coordinates of X = 2,635,350.00 and Y = 381,833.00; thence East 14,750.00 feet to a point on the common block line between said Block 69, Chandeleur Sound Area and Block 68, Chandeleur Sound Area, having Coordinates of X = 2,650,100.00 and Y = 381,833.00; thence East 423.48 feet to the point of beginning, containing **2,500 acres**, all as more particularly outlined on a plat on file in the Office of Mineral Resources, Department of Natural Resources. All bearings, distances and coordinates are based on Louisiana Coordinate System of 1927, (North or South Zone), where applicable.

NOTE: The above description of the Tract nominated for the purpose of acquiring a mineral lease or a geophysical agreement has been provided and corrected, where required, exclusively by the nominating party. Any mineral lease or geophysical agreement selected from this Tract and awarded by the Louisiana State Mineral and Energy Board shall be without warranty of any kind, either express, implied or statutory including, but not limited to, title or the implied warranties of merchantability and fitness for a particular purpose.

An error or omission in the nominating party's Tract description may require that a State mineral lease or geophysical agreement be modified, canceled or abrogated due to the existence of conflicting leases,

operating agreements, private claims or other future obligations or conditions within the Tract described. In such case, however, the Louisiana State Mineral and Energy Board shall not be obligated to refund any consideration paid by the Lessee prior to such modification, cancellation or abrogation including, but not limited to, bonuses, rentals and royalties.

NOTE: The State of Louisiana does hereby reserve, and this lease shall be subject to, the imprescriptible right of surface use in the nature of a servitude in favor of the Department of Natural Resources, including its Offices and Commissions, for the sole purpose of implementing, constructing, servicing and maintaining approved coastal zone management and/or restoration projects. Utilization of any and all rights derived under this lease by the mineral lessee, its agents, successors or assigns, shall not interfere with nor hinder the reasonable surface use by the Department of Natural Resources, its Offices or Commissions, as herein above reserved.

NOTE: This tract is located in an area designated by the Louisiana Legislature or the Wildlife and Fisheries Commission as a Public Oyster Seed Ground, Reservation, or area of Calcasieu or Sabine Lake. Proposed projects occurring in these areas will be evaluated on a case by case basis by Louisiana Department of Wildlife & Fisheries. Modifications to proposed project features including, but not limited to, access routes, well sites, flowlines, and appurtenant structures maybe required by the Louisiana Department of Wildlife and Fisheries. In addition, compensatory mitigation will be required to offset unavoidable habitat impacts.

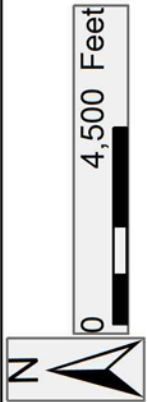
Applicant: GONZALES ENERGY

Bidder	Cash Payment	Price/ Acre	Rental	Oil	Gas	Other

17080010

Blocks

Active Lease



CS0068

ST BERNARD

CHANDELEUR SOUND

BS0002

P.O.B.

CS0069

CHANDELEUR SOUND AREA

BRETON SOUND AREA

BS0001

CS0070

SL 16300

SL 16170

SL 16299

SL 16732

MAIN PASS AREA, REVISED

MP0004

SL 17278

SL 17279

TRACT 44770 - Portion of Block 1, Breton Sound Area, St. Bernard Parish, Louisiana

All of the lands now or formerly constituting the beds and bottoms of all water bodies of every nature and description as to which title is vested in the State of Louisiana, together with all islands arising therein and other lands formed by accretion or by reliction, where allowed by law, excepting tax adjudicated lands, and not presently under mineral lease on August 9, 2017, situated in St. Bernard Parish, Louisiana, and more particularly described as follows: Beginning at a point within Block 1, Breton Sound Area, having Coordinates of X = 2,650,100.00 and Y = 374,656.00; thence South 8,076.00 feet to a point having Coordinates of X = 2,650,100.00 and Y = 366,580.00; thence West 13,484.39 feet to a point having Coordinates of X = 2,636,615.61 and Y = 366,580.00; thence North 8,076.00 feet to a point having Coordinates of X = 2,636,615.61 and Y = 374,656.00; thence East 13,484.39 feet to the point of beginning, containing approximately **2,500.00 acres**, all as more particularly outlined on a plat on file in the Office of Mineral Resources, Department of Natural Resources. All bearings, distances and coordinates are based on Louisiana Coordinate System of 1927, (North or South Zone), where applicable.

NOTE: The above description of the Tract nominated for the purpose of acquiring a mineral lease or a geophysical agreement has been provided and corrected, where required, exclusively by the nominating party. Any mineral lease or geophysical agreement selected from this Tract and awarded by the Louisiana State Mineral and Energy Board shall be without warranty of any kind, either express, implied or statutory including, but not limited to, title or the implied warranties of merchantability and fitness for a particular purpose.

An error or omission in the nominating party's Tract description may require that a State mineral lease or geophysical agreement be modified, canceled or abrogated due to the existence of conflicting leases, operating agreements, private claims or other future obligations or conditions within the Tract described. In such case, however, the Louisiana State Mineral and Energy Board shall not be obligated to refund any consideration paid by the Lessee prior to such modification, cancellation or abrogation including, but not limited to, bonuses, rentals and royalties.

NOTE: The State of Louisiana does hereby reserve, and this lease shall be subject to, the imprescriptible right of surface use in the nature of a servitude in favor of the Department of Natural Resources, including its Offices and Commissions, for the sole purpose of implementing, constructing, servicing and maintaining approved coastal zone management and/or restoration projects. Utilization of any and all rights derived under this lease by the mineral lessee, its agents, successors or assigns, shall not interfere with nor hinder the reasonable surface use by the

Department of Natural Resources, its Offices or Commissions, as herein above reserved.

NOTE: This tract is located in an area designated by the Louisiana Legislature or the Wildlife and Fisheries Commission as a Public Oyster Seed Ground, Reservation, or area of Calcasieu or Sabine Lake. Proposed projects occurring in these areas will be evaluated on a case by case basis by Louisiana Department of Wildlife & Fisheries. Modifications to proposed project features including, but not limited to, access routes, well sites, flowlines, and appurtenant structures maybe required by the Louisiana Department of Wildlife and Fisheries. In addition, compensatory mitigation will be required to offset unavoidable habitat impacts.

Applicant: GONZALES ENERGY

Bidder	Cash Payment	Price/ Acre	Rental	Oil	Gas	Other



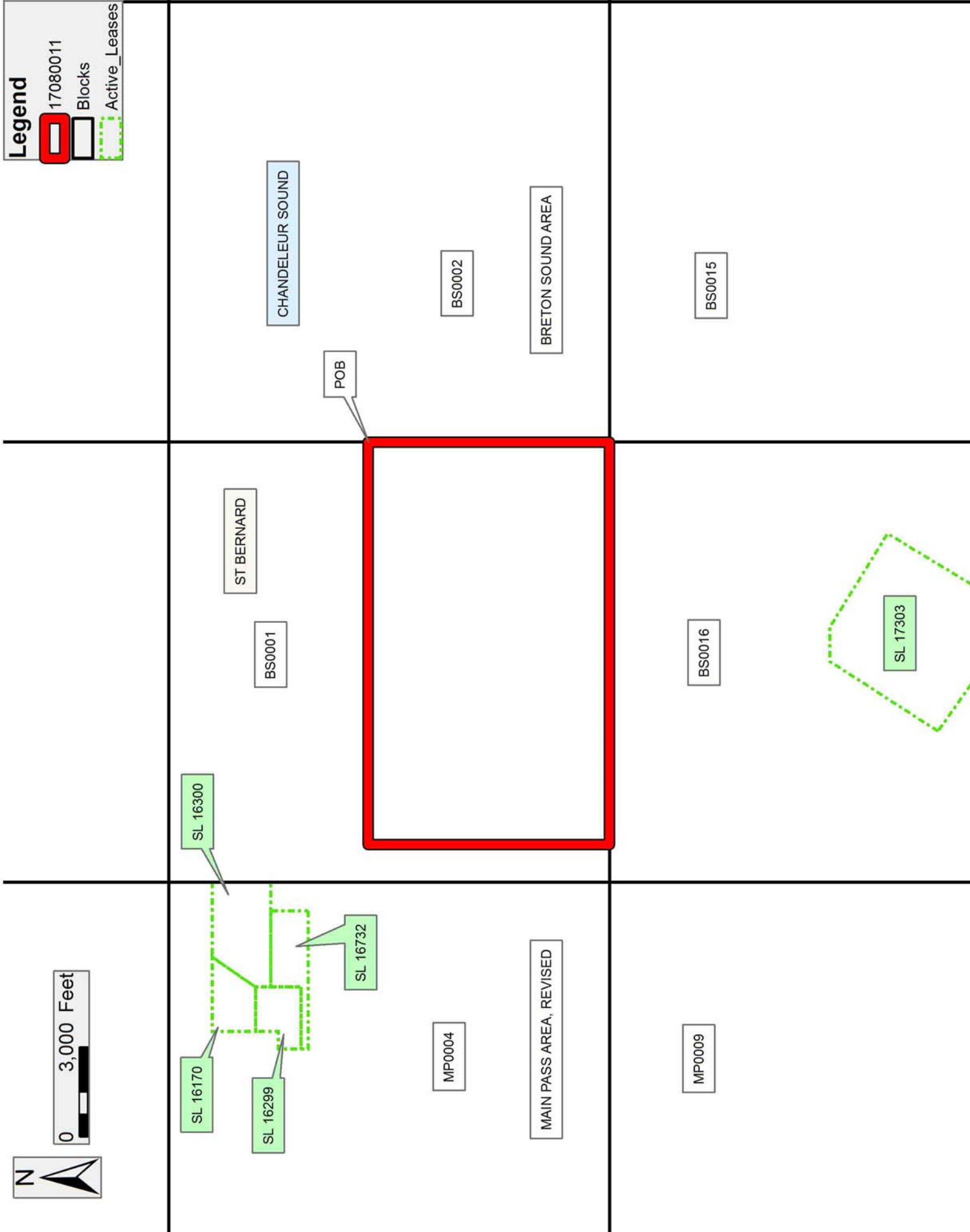
0 3,000 Feet

Legend

17080011

Blocks

Active_Leases



TRACT 44771 - Portion of Blocks 30, and 35, Breton Sound Area, Plaquemines Parish, Louisiana

All of the lands now or formerly constituting the beds and bottoms of all water bodies of every nature and description as to which title is vested in the State of Louisiana, together with all islands arising therein and other lands formed by accretion or by reliction, where allowed by law, excepting tax adjudicated lands, and not presently under mineral lease on August 9, 2017, situated in Plaquemines Parish, Louisiana, and more particularly described as follows: Beginning at a point on the common line of Block 29 and Block 30, Breton Sound Area and a point on the West boundary of State Lease No. 2000, as amended having Coordinates of X = 2,679,600.00 and Y = 326,205.00; thence South 3,875.00 feet along the common block line between said Block 29 and said Block 30, Breton Sound Area, and the common corner of Block 35 and Block 36, Breton Sound Area, also along the West boundary of said State Lease No. 2000 to its Southwest corner also being the Northwest corner of State Lease No. 1320, as amended having Coordinates of X = 2,679,600.00 and Y = 322,330.00; thence South 5,050.00 feet along the common block line between said Block 35 and Block 36 and the West boundary of said State Lease No. 1230 to a point having Coordinates of X = 2,679,600.00 and Y = 317,280.00; thence West 12,201.68 feet to a point having Coordinates of X = 2,667,398.32 and Y = 317,280.00; thence North 5,050.00 feet to a point on the common block line between said Block 30 and Block 35, Breton Sound Area having Coordinates of X = 2,667,398.32 and Y = 322,330.00; thence North 3,875.00 feet to a point having Coordinates of X = 2,667,398.32; and Y = 326,205.00; thence East 12,201.68 feet to the point of beginning, containing **2,500 acres**, all as more particularly outlined on a plat on file in the Office of Mineral Resources, Department of Natural Resources. All bearings, distances and coordinates are based on Louisiana Coordinate System of 1927, (North or South Zone), where applicable.

NOTE: The above description of the Tract nominated for the purpose of acquiring a mineral lease or a geophysical agreement has been provided and corrected, where required, exclusively by the nominating party. Any mineral lease or geophysical agreement selected from this Tract and awarded by the Louisiana State Mineral and Energy Board shall be without warranty of any kind, either express, implied or statutory including, but not limited to, title or the implied warranties of merchantability and fitness for a particular purpose.

An error or omission in the nominating party's Tract description may require that a State mineral lease or geophysical agreement be modified, canceled or abrogated due to the existence of conflicting leases, operating agreements, private claims or other future obligations or conditions within the Tract described. In such case, however, the Louisiana State Mineral and Energy Board shall not be obligated to refund any consideration paid by the Lessee prior to such modification, cancellation or abrogation including, but not limited to, bonuses, rentals and royalties.

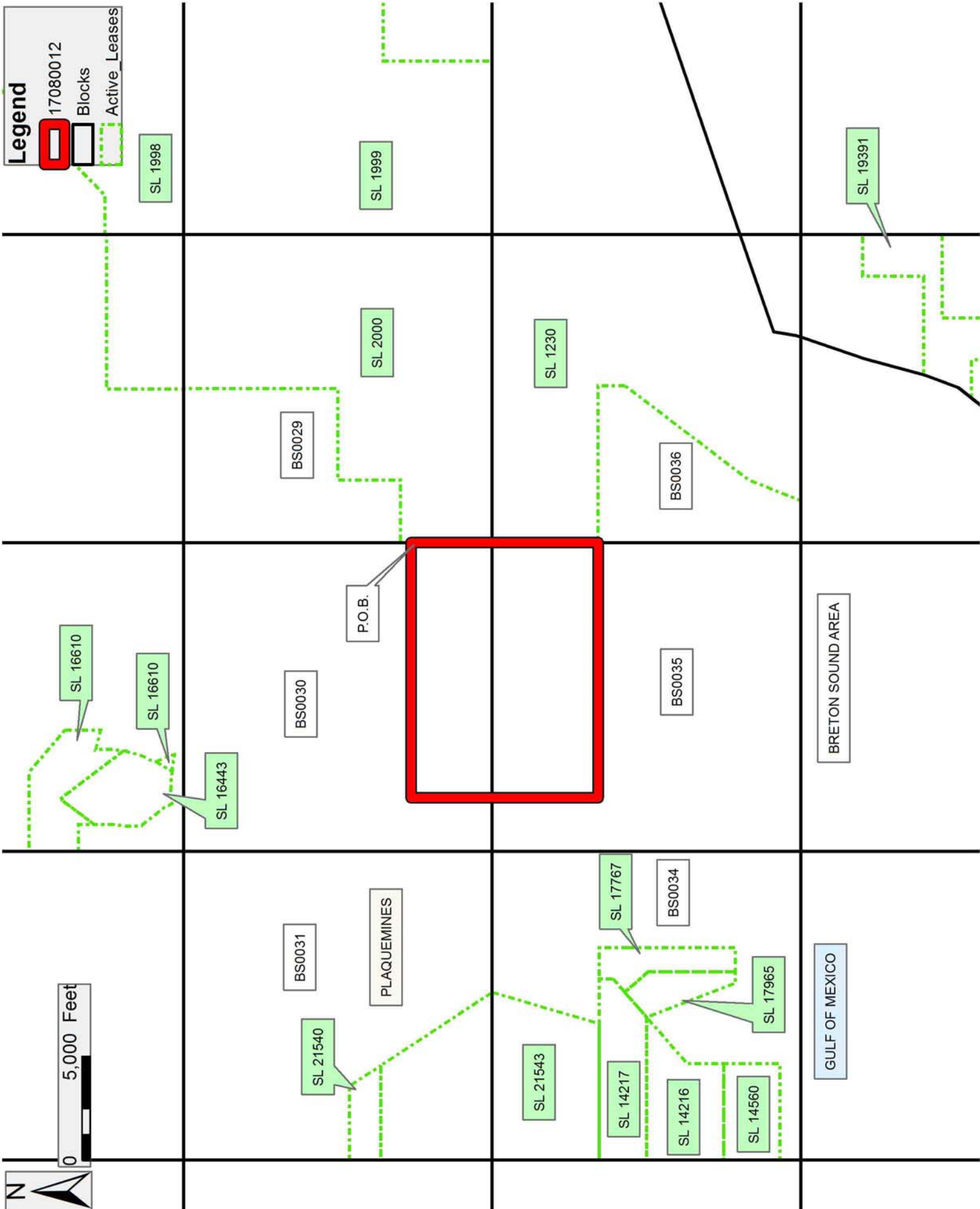
NOTE: The State of Louisiana does hereby reserve, and this lease shall be subject to, the imprescriptible right of surface use in the nature of a servitude in favor of the Department of Natural Resources, including its Offices and Commissions, for the sole purpose of implementing, constructing, servicing and maintaining approved coastal zone management and/or restoration projects. Utilization of any and all rights derived under this lease by the mineral lessee, its agents, successors or assigns, shall not interfere with nor hinder the reasonable surface use by the Department of Natural Resources, its Offices or Commissions, as herein above reserved.

NOTE: It appears, according to our records, that a portion of this Tract is located within the restrictive safety fairway area as set out by the Corps of Engineers, U.S. Army and/or the restrictive anchorage area as set out by the U.S. Coast Guard.

NOTE: This tract is located in an area designated by the Louisiana Legislature or the Wildlife and Fisheries Commission as a Public Oyster Seed Ground, Reservation, or area of Calcasieu or Sabine Lake. Proposed projects occurring in these areas will be evaluated on a case by case basis by Louisiana Department of Wildlife & Fisheries. Modifications to proposed project features including, but not limited to, access routes, well sites, flowlines, and appurtenant structures maybe required by the Louisiana Department of Wildlife and Fisheries. In addition, compensatory mitigation will be required to offset unavoidable habitat impacts.

Applicant: GONZALES ENERGY

Bidder	Cash Payment	Price/ Acre	Rental	Oil	Gas	Other



TRACT 44772 - Portion of Block 48, Breton Sound Area, Plaquemines Parish, Louisiana

All of the lands now or formerly constituting the beds and bottoms of all water bodies of every nature and description as to which title is vested in the State of Louisiana, together with all islands arising therein and other lands formed by accretion or by reliction, where allowed by law, excepting tax adjudicated lands, and not presently under mineral lease on August 9, 2017, situated in Plaquemines Parish, Louisiana, and more particularly described as follows: Beginning at a point within Block 48, Breton Sound Area, having Coordinates of X = 2,648,867.71 and Y = 300,886.10; thence South 8,056.10 feet to a point on the common block line between said Block 48 and Block 49, Breton Sound Area having Coordinates of X = 2,648,867.71 and Y = 292,830.00; thence West 13,517.71 along the common block line of said Block 48 and Block 49, Breton Sound Area, to its common corner, said corner also being the common corner between said Block 31 and Block 36, Main Pass Area, Revised, having Coordinates of X = 2,635,350.00 and Y = 292,830.00; thence North 4,089.76 feet common block line between said Block 31 and said Block 48 to the Southwest corner of State Lease No. 12002, as amended having Coordinates of X = 2,635,350.00 and Y = 296,919.76; thence continue North 3,966.34 feet along the West boundary of said State Lease No. 12002 to its Northeast corner having Coordinates of X = 2,635,350.00 and Y = 300,886.10; thence East 13,517.71 feet to the point of beginning, containing **2,500 acres**, all as more particularly outlined on a plat on file in the Office of Mineral Resources, Department of Natural Resources. All bearings, distances and coordinates are based on Louisiana Coordinate System of 1927, (North or South Zone), where applicable.

NOTE: The above description of the Tract nominated for the purpose of acquiring a mineral lease or a geophysical agreement has been provided and corrected, where required, exclusively by the nominating party. Any mineral lease or geophysical agreement selected from this Tract and awarded by the Louisiana State Mineral and Energy Board shall be without warranty of any kind, either express, implied or statutory including, but not limited to, title or the implied warranties of merchantability and fitness for a particular purpose.

An error or omission in the nominating party's Tract description may require that a State mineral lease or geophysical agreement be modified, canceled or abrogated due to the existence of conflicting leases, operating agreements, private claims or other future obligations or conditions within the Tract described. In such case, however, the Louisiana State Mineral and Energy Board shall not be obligated to refund any consideration paid by the Lessee prior to such modification, cancellation or abrogation including, but not limited to, bonuses, rentals and royalties.

NOTE: The State of Louisiana does hereby reserve, and this lease shall be subject to, the imprescriptible right of surface use in the nature of a

servitude in favor of the Department of Natural Resources, including its Offices and Commissions, for the sole purpose of implementing, constructing, servicing and maintaining approved coastal zone management and/or restoration projects. Utilization of any and all rights derived under this lease by the mineral lessee, its agents, successors or assigns, shall not interfere with nor hinder the reasonable surface use by the Department of Natural Resources, its Offices or Commissions, as herein above reserved.

NOTE: This tract is located in an area designated by the Louisiana Legislature or the Wildlife and Fisheries Commission as a Public Oyster Seed Ground, Reservation, or area of Calcasieu or Sabine Lake. Proposed projects occurring in these areas will be evaluated on a case by case basis by Louisiana Department of Wildlife & Fisheries. Modifications to proposed project features including, but not limited to, access routes, well sites, flowlines, and appurtenant structures maybe required by the Louisiana Department of Wildlife and Fisheries. In addition, compensatory mitigation will be required to offset unavoidable habitat impacts.

Applicant: GONZALES ENERGY

Bidder	Cash Payment	Price/ Acre	Rental	Oil	Gas	Other



0 4,500 Feet

Legend

17080013

Blocks

Active Leases

