

TRACT 44569 - Grant and Lasalle Parishes, Louisiana

All of the lands now or formerly constituting the beds and bottoms of all water bodies of every nature and description as to which title is vested in the State of Louisiana, together with all islands arising therein and other lands formed by accretion or by reliction, where allowed by law, excepting tax adjudicated lands, and not presently under mineral lease on August 10, 2016, situated in Grant and Lasalle Parishes, Louisiana, and more particularly described as follows: Beginning at a point having Coordinates of X = 2,047,086.60 and Y = 400,710.29; thence East 3,500.00 feet to a point having Coordinates of X = 2,050,586.60 and Y = 400,710.29; thence South 3,689.28 feet to a point having Coordinates of X = 2,050,586.60 and Y = 397,021.01; thence West 3,500.00 feet to a point having Coordinates of X = 2,047,086.60 and Y = 397,021.01, and North 3,689.28 feet to the point of beginning, **LESS AND EXCEPT** all that portion of State Lease No. 3552, as amended, that lies within the above described tract, containing approximately **14 acres**, all as more particularly outlined on a plat on file in the Office of Mineral Resources, Department of Natural Resources. All bearings, distances and coordinates are based on Louisiana Coordinate System of 1927, (North or South Zone), where applicable.

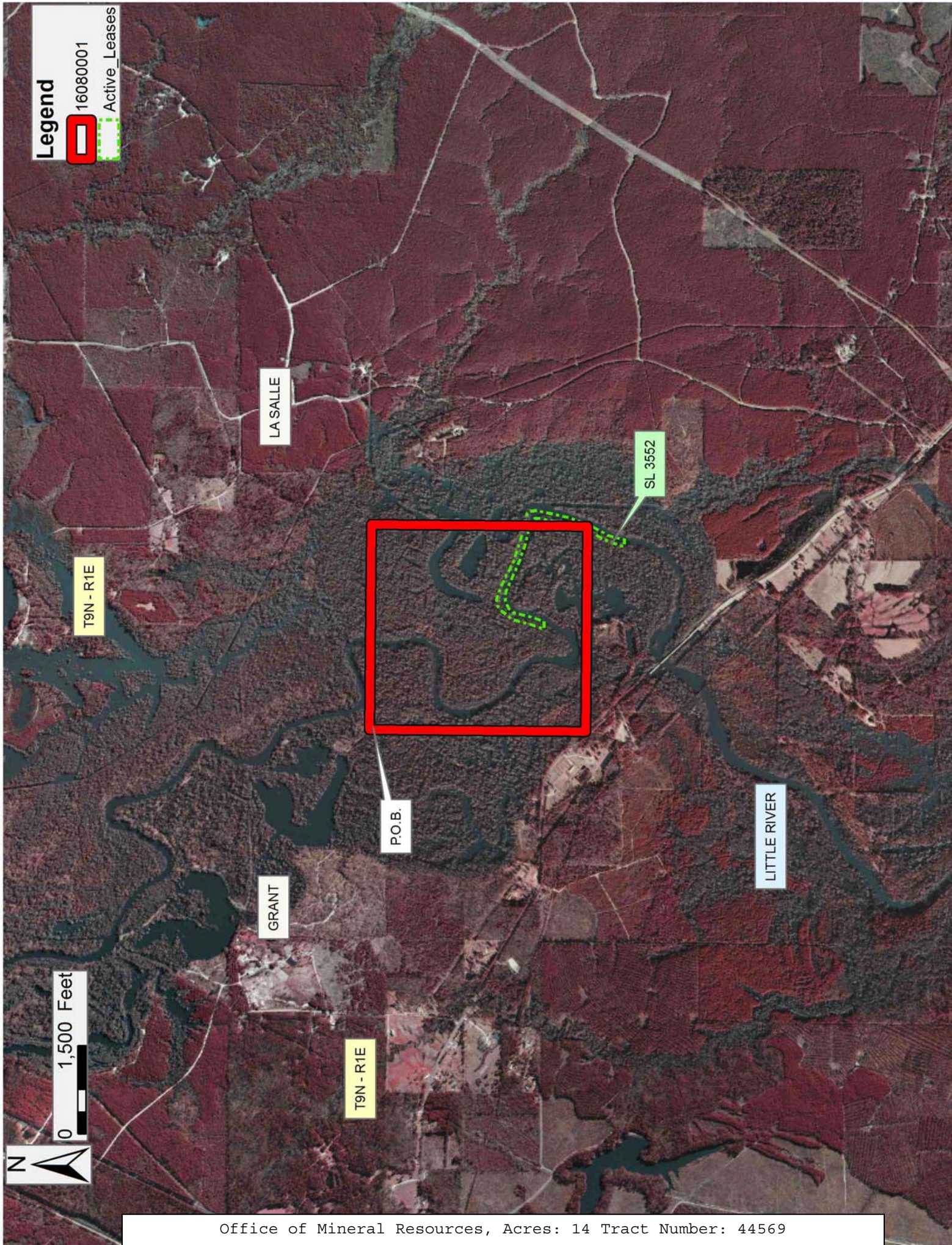
NOTE: The above description of the Tract nominated for the purpose of acquiring a mineral lease or a geophysical agreement has been provided and corrected, where required, exclusively by the nominating party. Any mineral lease or geophysical agreement selected from this Tract and awarded by the Louisiana State Mineral and Energy Board shall be without warranty of any kind, either express, implied or statutory including, but not limited to, title or the implied warranties of merchantability and fitness for a particular purpose.

An error or omission in the nominating party's Tract description may require that a State mineral lease or geophysical agreement be modified, canceled or abrogated due to the existence of conflicting leases, operating agreements, private claims or other future obligations or conditions within the Tract described. In such case, however, the Louisiana State Mineral and Energy Board shall not be obligated to refund any consideration paid by the Lessee prior to such modification, cancellation or abrogation including, but not limited to, bonuses, rentals and royalties.

NOTE: A portion of this tract is located on or adjacent to a Louisiana designated Natural and Scenic River. The applicant must obtain authorization from the Louisiana Department of Wildlife and Fisheries, Scenic Rivers Program prior to initiating any activities within or adjacent to the river, including, but not limited to, crossings by roads and pipelines, well sites, production facilities and water withdrawals.

Bidder	Cash Payment	Price/Acre	Rental	Oil	Gas	Other

Applicant: THEOPHILUS OIL, GAS & LAND SERVICES, LLC



Legend
16080001
Active_Leases

LA SALLE

T9N - R1E

SL 3552



P.O.B.

GRANT

LITTLE RIVER

T9N - R1E

0 1,500 Feet



TRACT 44570 - Terrebonne Parish, Louisiana

All of the lands now or formerly constituting the beds and bottoms of all water bodies of every nature and description as to which title is vested in the State of Louisiana, together with all islands arising therein and other lands formed by accretion or by reliction, where allowed by law, excepting tax adjudicated lands, and not presently under mineral lease on August 10, 2016, situated in Terrebonne Parish, Louisiana, and more particularly described as follows: Beginning at a point having Coordinates of X = 2,080,158.72 and Y = 255,194.30; thence East 18,480.00 feet to a point having Coordinates of X = 2,098,638.72 and Y = 255,194.30; thence South 10,558.77 feet to a point having Coordinates of X = 2,098,638.72 and Y = 244,635.53; thence West 18,480.00 feet to a point having Coordinates of X = 2,080,158.72 and Y = 244,635.53; thence North 10,558.77 feet to the point of beginning, containing approximately **1,920 acres**, all as more particularly outlined on a plat on file in the Office of Mineral Resources, Department of Natural Resources. All bearings, distances and coordinates are based on Louisiana Coordinate System of 1927, (North or South Zone), where applicable.

NOTE: The above description of the Tract nominated for the purpose of acquiring a mineral lease or a geophysical agreement has been provided and corrected, where required, exclusively by the nominating party. Any mineral lease or geophysical agreement selected from this Tract and awarded by the Louisiana State Mineral and Energy Board shall be without warranty of any kind, either express, implied or statutory including, but not limited to, title or the implied warranties of merchantability and fitness for a particular purpose.

An error or omission in the nominating party's Tract description may require that a State mineral lease or geophysical agreement be modified, canceled or abrogated due to the existence of conflicting leases, operating agreements, private claims or other future obligations or conditions within the Tract described. In such case, however, the Louisiana State Mineral and Energy Board shall not be obligated to refund any consideration paid by the Lessee prior to such modification, cancellation or abrogation including, but not limited to, bonuses, rentals and royalties.

NOTE: The Office of Mineral Resources will require a minimum bonus of \$200 per acre and a minimum royalty of 22.5%.

NOTE: The State of Louisiana does hereby reserve, and this lease shall be subject to, the imprescriptible right of surface use in the nature of a servitude in favor of the Department of Natural Resources, including its Offices and Commissions, for the sole purpose of implementing, constructing, servicing and maintaining approved coastal zone management and/or restoration projects. Utilization of any and all rights derived under this lease by the mineral lessee, its agents, successors or assigns, shall not interfere with nor hinder the reasonable surface use by the

Department of Natural Resources, its Offices or Commissions, as herein above reserved.

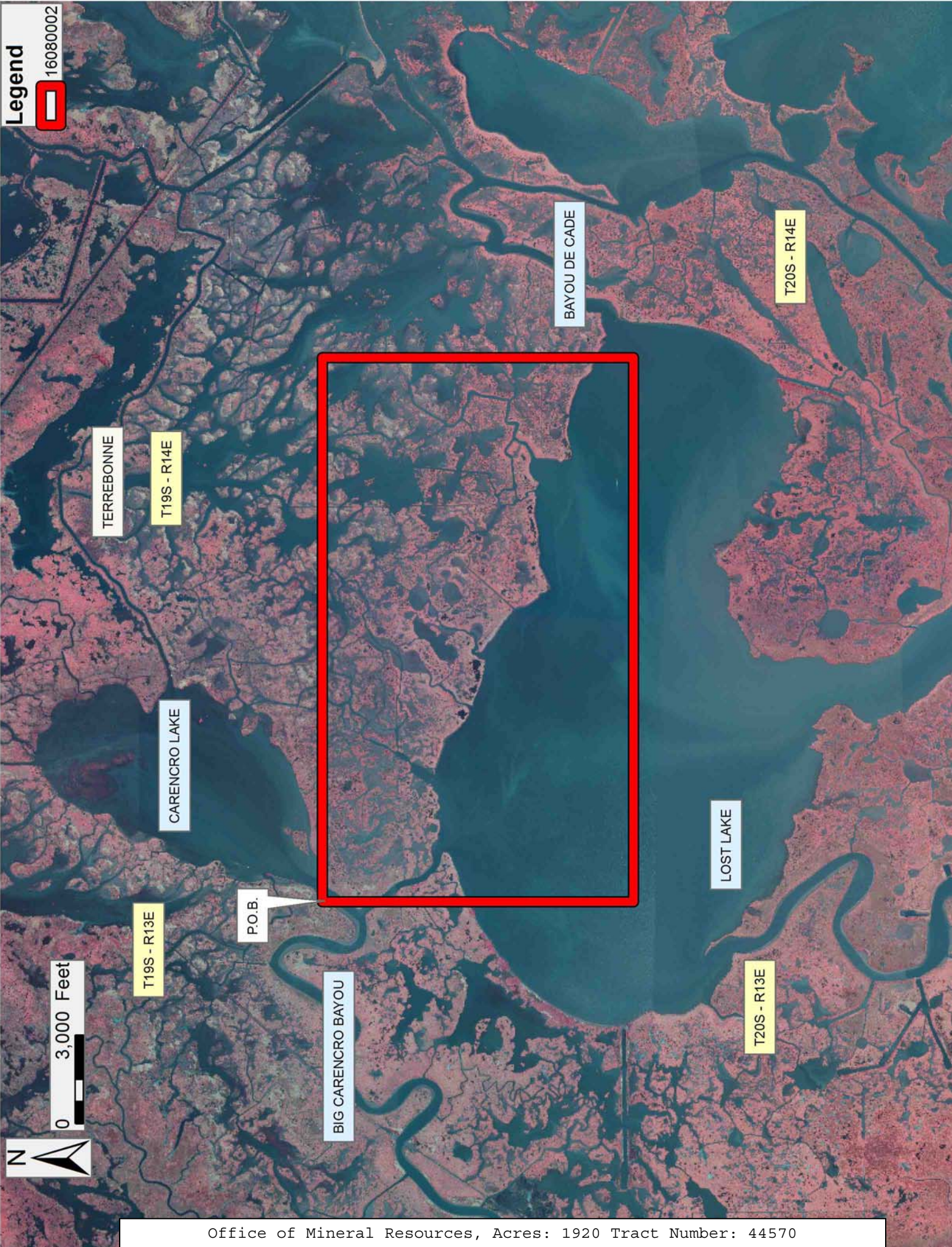
NOTE: The Office of Mineral Resources will require a minimum bonus of \$200 per acre and a minimum royalty of 22.5%.

Applicant: ACADIAN LAND SERVICES, L.L.C.

Applicant: ACADIAN LAND SERVICES, L.L.C.

Bidder	Cash Payment	Price/Acre	Rental	Oil	Gas	Other

Bidder	Cash Payment	Price/Acre	Rental	Oil	Gas	Other



TRACT 44571 - Terrebonne Parish, Louisiana

All of the lands now or formerly constituting the beds and bottoms of all water bodies of every nature and description as to which title is vested in the State of Louisiana, together with all islands arising therein and other lands formed by accretion or by reliction, where allowed by law, excepting tax adjudicated lands, and not presently under mineral lease on August 10, 2016, situated in Terrebonne Parish, Louisiana, and more particularly described as follows: Beginning at a point having Coordinates of X = 2,098,638.72 and Y = 255,194.30; thence East approximately 11,500 feet to a point on the Western boundary of State Lease No. 3401, as amended; thence Southeasterly and Southerly along the meanders of the boundary of said State Lease No. 3401 to its Southwest corner having Coordinates of X = 2,112,118.05 and Y = 251,770.56; thence North 89 degrees 08 minutes 28 seconds East 2,616.11 feet along the South boundary of said State Lease No. 3401, as amended, to its Southeast corner having Coordinates of X = 2,114,733.86 and Y = 251,809.77; thence North 00 degrees 51 minutes 32 seconds West 1,343.67 feet along the Eastern boundary of said State Lease No. 3401 to the Southwest corner of State Lease No. 3475, as amended, having Coordinates of X = 2,114,713.72 and Y = 253,153.29; thence North 89 degrees 08 minutes 28 seconds East 2,405.27 feet to a point having Coordinates of X = 2,117,118.72 and Y = 253,189.35; thence South 16,475.05 feet to a point having Coordinates of X = 2,117,118.72 and Y = 236,714.30; thence West 18,480.00 feet to a point having Coordinates of X = 2,098,638.72 and Y = 236,714.30; thence North 18,480.00 feet to the point of beginning, **LESS AND EXCEPT** any right, title, and interest in lands owned by and not under lease from the State of Louisiana, on behalf of the Terrebonne Parish School Board, situated in Section 16, Township 20 South, Range 14 East, Terrebonne Parish, Louisiana, contained within the above described tract, containing approximately **2,191 acres**, all as more particularly outlined on a plat on file in the Office of Mineral Resources, Department of Natural Resources. All bearings, distances and coordinates are based on Louisiana Coordinate System of 1927, (North or South Zone), where applicable.

NOTE: The above description of the Tract nominated for the purpose of acquiring a mineral lease or a geophysical agreement has been provided and corrected, where required, exclusively by the nominating party. Any mineral lease or geophysical agreement selected from this Tract and awarded by the Louisiana State Mineral and Energy Board shall be without warranty of any kind, either express, implied or statutory including, but not limited to, title or the implied warranties of merchantability and fitness for a particular purpose.

An error or omission in the nominating party's Tract description may require that a State mineral lease or geophysical agreement be modified, canceled or abrogated due to the existence of conflicting leases, operating agreements, private claims or other future obligations or conditions within the Tract described. In such case, however, the Louisiana State Mineral and Energy Board shall not be obligated to refund

any consideration paid by the Lessee prior to such modification, cancellation or abrogation including, but not limited to, bonuses, rentals and royalties.

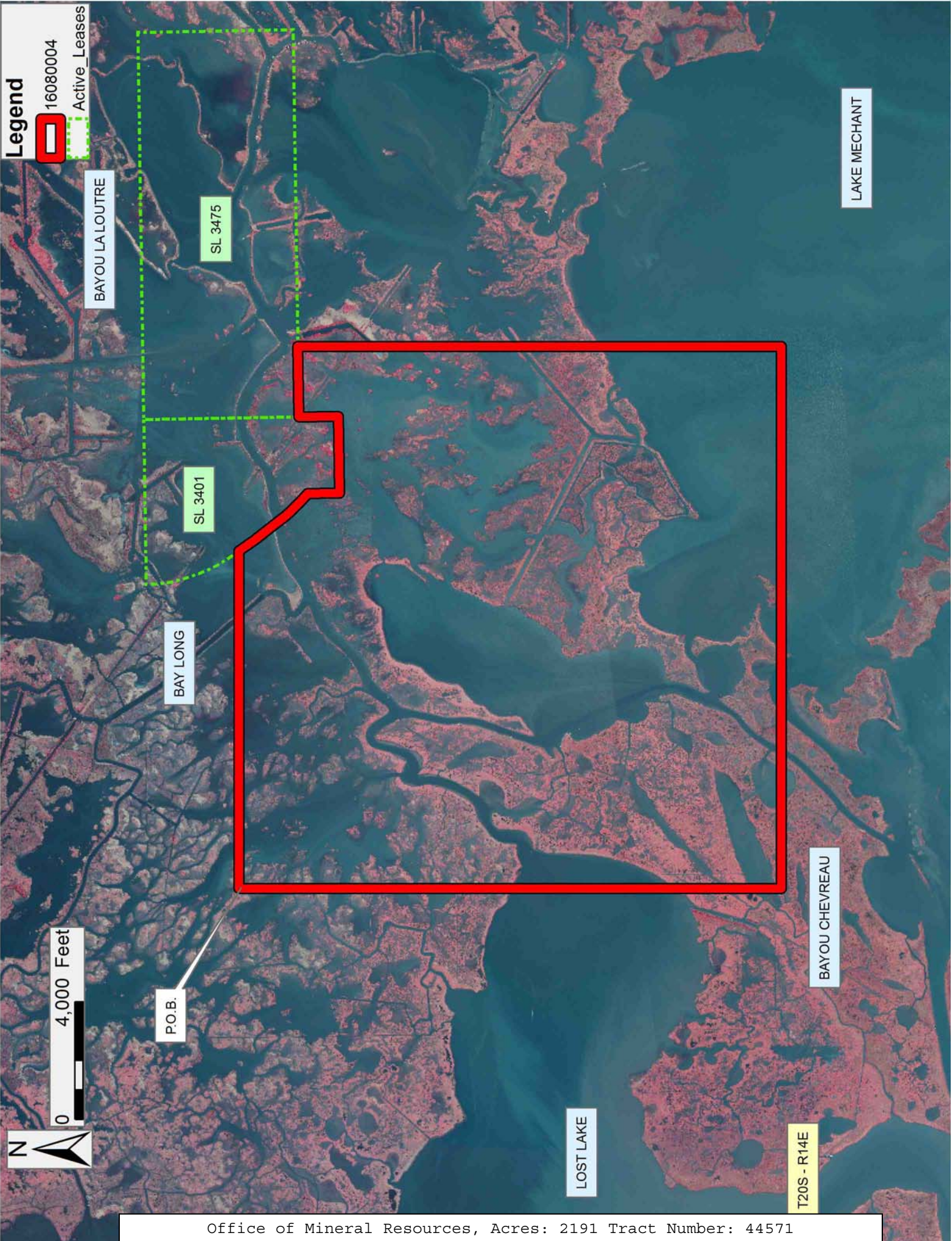
NOTE: The State of Louisiana does hereby reserve, and this lease shall be subject to, the imprescriptible right of surface use in the nature of a servitude in favor of the Department of Natural Resources, including its Offices and Commissions, for the sole purpose of implementing, constructing, servicing and maintaining approved coastal zone management and/or restoration projects. Utilization of any and all rights derived under this lease by the mineral lessee, its agents, successors or assigns, shall not interfere with nor hinder the reasonable surface use by the Department of Natural Resources, its Offices or Commissions, as herein above reserved.

NOTE: This tract is located in an area designated by the Louisiana Legislature or the Wildlife and Fisheries Commission as a Public Oyster Seed Ground or Reservation. Surface activity within the boundaries of these designated Public Oyster Seed Grounds or Reservations is prohibited.

NOTE: The Office of Mineral Resources will require a minimum bonus of \$200 per acre and a minimum royalty of 22.5%.

Applicant: ACADIAN LAND SERVICES, L.L.C.

Bidder	Cash Payment	Price/Acre	Rental	Oil	Gas	Other



Legend

16080004



Active Leases

BAYOU LA LOUTRE

SL 3475

SL 3401

BAY LONG

P.O.B.

0 4,000 Feet



LAKE MECHANT

BAYOU CHEVREAU

LOST LAKE

T20S - R14E

TRACT 44572 - Terrebonne Parish, Louisiana

All of the lands now or formerly constituting the beds and bottoms of all water bodies of every nature and description as to which title is vested in the State of Louisiana, together with all islands arising therein and other lands formed by accretion or by reliction, where allowed by law, excepting tax adjudicated lands, and not presently under mineral lease on August 10, 2016, situated in Terrebonne Parish, Louisiana, and more particularly described as follows: Beginning at a point having Coordinates of X = 2,080,158.72 and Y = 244,635.53; thence East 18,480.00 feet to a point having Coordinates of X = 2,098,638.72 and Y = 244,635.53; thence South 7,921.23 feet to a point having Coordinates of X = 2,098,638.72 and Y = 236,714.30; thence West 18,480.00 feet to a point having Coordinates of X = 2,080,158.72 and Y = 236,714.30; thence North 7,921.23 feet to the point of beginning, **LESS AND EXCEPT** any right, title, and interest in lands owned by and not under lease from the State of Louisiana, on behalf of the Terrebonne Parish School Board, situated in Section 16, Township 20 South, Range 14 East, Terrebonne Parish, Louisiana, contained within the above described tract, containing approximately **2,115 acres**, all as more particularly outlined on a plat on file in the Office of Mineral Resources, Department of Natural Resources. All bearings, distances and coordinates are based on Louisiana Coordinate System of 1927, (North or South Zone), where applicable.

NOTE: The above description of the Tract nominated for the purpose of acquiring a mineral lease or a geophysical agreement has been provided and corrected, where required, exclusively by the nominating party. Any mineral lease or geophysical agreement selected from this Tract and awarded by the Louisiana State Mineral and Energy Board shall be without warranty of any kind, either express, implied or statutory including, but not limited to, title or the implied warranties of merchantability and fitness for a particular purpose.

An error or omission in the nominating party's Tract description may require that a State mineral lease or geophysical agreement be modified, canceled or abrogated due to the existence of conflicting leases, operating agreements, private claims or other future obligations or conditions within the Tract described. In such case, however, the Louisiana State Mineral and Energy Board shall not be obligated to refund any consideration paid by the Lessee prior to such modification, cancellation or abrogation including, but not limited to, bonuses, rentals and royalties.

NOTE: The State of Louisiana does hereby reserve, and this lease shall be subject to, the imprescriptible right of surface use in the nature of a servitude in favor of the Department of Natural Resources, including its Offices and Commissions, for the sole purpose of implementing, constructing, servicing and maintaining approved coastal zone management and/or restoration projects. Utilization of any and all rights derived under this lease by the mineral lessee, its agents, successors or assigns,

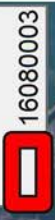
shall not interfere with nor hinder the reasonable surface use by the Department of Natural Resources, its Offices or Commissions, as herein above reserved.

NOTE: The Office of Mineral Resources will require a minimum bonus of \$200 per acre and a minimum royalty of 22.5%.

Applicant: ACADIAN LAND SERVICES, L.L.C.

Bidder	Cash Payment	Price/Acre	Rental	Oil	Gas	Other

Legend



16080003



0 3,000 Feet

TERREBONNE

LOST LAKE

P.O.B.

T20S - R13E

T20S - R14E

RICE BAYOU

LOST LAKE PASS

TRACT 44573 - Terrebonne Parish, Louisiana

All of the lands now or formerly constituting the beds and bottoms of all water bodies of every nature and description as to which title is vested in the State of Louisiana, together with all islands arising therein and other lands formed by accretion or by reliction, where allowed by law, excepting tax adjudicated lands, and not presently under mineral lease on August 10, 2016, situated in Terrebonne Parish, Louisiana, and more particularly described as follows: Beginning at a point having Coordinates of X = 2,083,544.14 and Y = 236,714.30; thence East 18,480.00 feet to a point having Coordinates of X = 2,102,024.14 and Y = 236,714.30; thence South 18,480.00 feet to a point having Coordinates of X = 2,102,024.14 and Y = 218,234.30; thence West 18,480.00 feet to a point having Coordinates of X = 2,083,544.14 and Y = 218,234.30; thence North 18,480.00 feet to a point of beginning, containing approximately **2,326 acres**, all as more particularly outlined on a plat on file in the Office of Mineral Resources, Department of Natural Resources. All bearings, distances and coordinates are based on Louisiana Coordinate System of 1927, (North or South Zone), where applicable.

NOTE: The above description of the Tract nominated for the purpose of acquiring a mineral lease or a geophysical agreement has been provided and corrected, where required, exclusively by the nominating party. Any mineral lease or geophysical agreement selected from this Tract and awarded by the Louisiana State Mineral and Energy Board shall be without warranty of any kind, either express, implied or statutory including, but not limited to, title or the implied warranties of merchantability and fitness for a particular purpose.

An error or omission in the nominating party's Tract description may require that a State mineral lease or geophysical agreement be modified, canceled or abrogated due to the existence of conflicting leases, operating agreements, private claims or other future obligations or conditions within the Tract described. In such case, however, the Louisiana State Mineral and Energy Board shall not be obligated to refund any consideration paid by the Lessee prior to such modification, cancellation or abrogation including, but not limited to, bonuses, rentals and royalties.

NOTE: The State of Louisiana does hereby reserve, and this lease shall be subject to, the imprescriptible right of surface use in the nature of a servitude in favor of the Department of Natural Resources, including its Offices and Commissions, for the sole purpose of implementing, constructing, servicing and maintaining approved coastal zone management and/or restoration projects. Utilization of any and all rights derived under this lease by the mineral lessee, its agents, successors or assigns, shall not interfere with nor hinder the reasonable surface use by the Department of Natural Resources, its Offices or Commissions, as herein above reserved.

NOTE: This tract is located in an area designated by the Louisiana Legislature or the Wildlife and Fisheries Commission as a Public Oyster Seed Ground or Reservation. Surface activity within the boundaries of these designated Public Oyster Seed Grounds or Reservations is prohibited.

NOTE: The Office of Mineral Resources will require a minimum bonus of \$200 per acre and a minimum royalty of 22.5%.

Applicant: ACADIAN LAND SERVICES, L.L.C.

Bidder	Cash Payment	Price/Acre	Rental	Oil	Gas	Other



TRACT 44574 - Terrebonne Parish, Louisiana

All of the lands now or formerly constituting the beds and bottoms of all water bodies of every nature and description as to which title is vested in the State of Louisiana, together with all islands arising therein and other lands formed by accretion or by reliction, where allowed by law, excepting tax adjudicated lands, and not presently under mineral lease on August 10, 2016, situated in Terrebonne Parish, Louisiana, and more particularly described as follows: Beginning at a point having Coordinates of X = 2,102,024.14 and Y = 236,714.30; thence East 10,945.73 feet to a point having Coordinates of X = 2,112,969.86 and Y = 236,714.30; thence South 6,972.24 feet to the Northeast corner of State Lease No. 21658 and the Northwest corner of State Lease No. 21629 having Coordinates of X = 2,112,969.86 and Y = 229,742.05; thence along the boundary of said State Lease No. 21628 the following courses and distances: South 87 degrees 58 minutes 45 seconds West 199.99 feet to a point having Coordinates of X = 2,112,770.00 and Y = 229,735.00, South 84 degrees 28 minutes 55 seconds West 2,308.70 feet to a point having Coordinates of X = 2,110,472.00 and Y = 229,513.00, South 71 degrees 58 minutes 49 seconds West 3,533.31 feet to a point having Coordinates of X = 2,107,112.00 and Y = 228,420.00, South 47 degrees 43 minutes 13 seconds West 2,592.35 feet to a point having Coordinates of X = 2,105,194.00 and Y = 226,676.00, South 43 degrees 33 minutes 37 seconds West 2,645.42 feet to a point having Coordinates of X = 2,103,371.00 and Y = 224,759.00, South 36 degrees 32 minutes 59 seconds East 1,145.22 feet to a point having Coordinates of X = 2,104,053.00 and Y = 223,839.00, South 82 degrees 26 minutes 37 seconds East 1,087.44 feet to a point having Coordinates of X = 2,105,131.00 and Y = 223,696.00, South 87 degrees 44 minutes 48 seconds East 1,958.52 feet to a point having Coordinates of X = 2,107,088.00 and Y = 223,619.00, North 73 degrees 15 minutes 34 seconds East 1,732.42 feet to a point having Coordinates of X = 2,108,747.00 and Y = 224,118.00, North 71 degrees 28 minutes 29 seconds East 1,806.61 feet to a point having Coordinates of X = 2,110,460.00 and Y = 224,692.00, North 62 degrees 34 minutes 07 seconds East 1,272.02 feet to a point having Coordinates of X = 2,111,589.00 and Y = 225,278.00, North 66 degrees 09 minutes 52 seconds East 1,509.62 feet to a point on the South East Corner of said State Lease No. 21628 and the Southwest corner of said State Lease No. 21629 having Coordinates of X = 2,112,969.86 and Y = 225,888.05; thence South 7,653.76 feet to a point having Coordinates of X = 2,112,969.86 and Y = 218,234.30; thence West 10,945.73 feet to a point having Coordinates of X = 2,102,024.14 and Y = 218,234.30; thence North 18,480.00 feet to the point of beginning, containing approximately **1,924 acres**, all as more particularly outlined on a plat on file in the Office of Mineral Resources, Department of Natural Resources. All bearings, distances and coordinates are based on Louisiana Coordinate System of 1927, (North or South Zone), where applicable.

NOTE: The above description of the Tract nominated for the purpose of acquiring a mineral lease or a geophysical agreement has been provided and corrected, where required, exclusively by the nominating party. Any mineral lease or geophysical agreement selected from this Tract and

awarded by the Louisiana State Mineral and Energy Board shall be without warranty of any kind, either express, implied or statutory including, but not limited to, title or the implied warranties of merchantability and fitness for a particular purpose.

An error or omission in the nominating party's Tract description may require that a State mineral lease or geophysical agreement be modified, canceled or abrogated due to the existence of conflicting leases, operating agreements, private claims or other future obligations or conditions within the Tract described. In such case, however, the Louisiana State Mineral and Energy Board shall not be obligated to refund any consideration paid by the Lessee prior to such modification, cancellation or abrogation including, but not limited to, bonuses, rentals and royalties.

NOTE: The State of Louisiana does hereby reserve, and this lease shall be subject to, the imprescriptible right of surface use in the nature of a servitude in favor of the Department of Natural Resources, including its Offices and Commissions, for the sole purpose of implementing, constructing, servicing and maintaining approved coastal zone management and/or restoration projects. Utilization of any and all rights derived under this lease by the mineral lessee, its agents, successors or assigns, shall not interfere with nor hinder the reasonable surface use by the Department of Natural Resources, its Offices or Commissions, as herein above reserved.

NOTE: This tract is located in an area designated by the Louisiana Legislature or the Wildlife and Fisheries Commission as a Public Oyster Seed Ground or Reservation. Surface activity within the boundaries of these designated Public Oyster Seed Grounds or Reservations is prohibited.

NOTE: The Office of Mineral Resources will require a minimum bonus of \$200 per acre and a minimum royalty of 22.5%.

Applicant: ACADIAN LAND SERVICES, L.L.C.

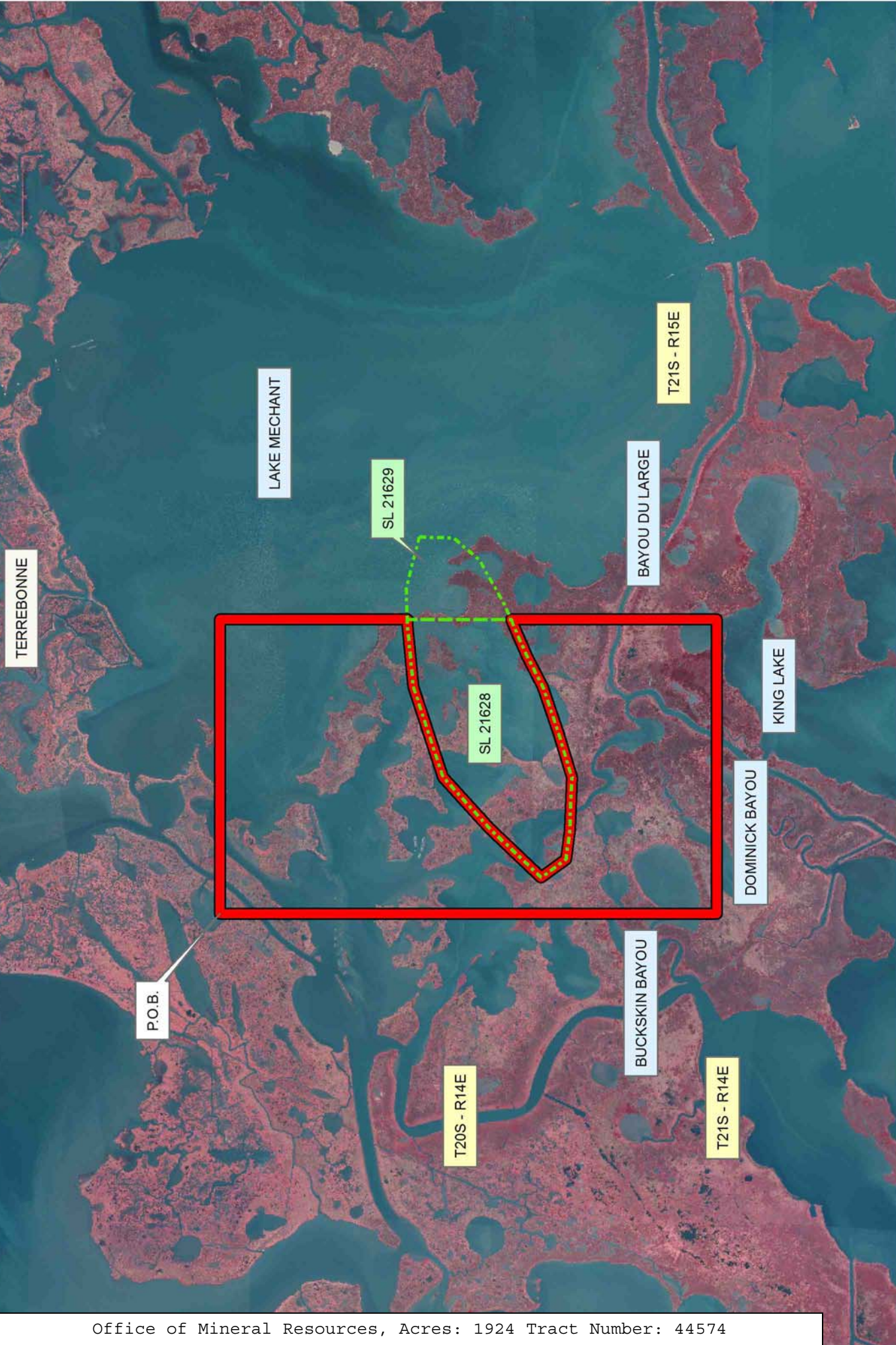
Bidder	Cash Payment	Price/Acre	Rental	Oil	Gas	Other

Legend

16080006

Active_Leases

0 4,000 Feet



TRACT 44575 - Terrebonne Parish, Louisiana

All of the lands now or formerly constituting the beds and bottoms of all water bodies of every nature and description as to which title is vested in the State of Louisiana, together with all islands arising therein and other lands formed by accretion or by reliction, where allowed by law, excepting tax adjudicated lands, and not presently under mineral lease on August 10, 2016, situated in Terrebonne Parish, Louisiana, and more particularly described as follows: Beginning at a point having Coordinates of X = 2,112,969.86 and Y = 236,714.30; thence East 7,534.27 feet to a point having Coordinates of X = 2,120,504.14 and Y = 236,714.30; thence South 18,480.00 feet to a point having Coordinates of X = 2,120,504.14 and Y = 218,234.30; thence West 7,534.27 feet to a point having Coordinates of X = 2,112,969.86 and Y = 218,234.30; thence North 7,653.76 feet to a point on the Southeast corner of State Lease No. 21628 and Southwest corner of State Lease No. 21629 having Coordinates of X = 2,112,969.86 and Y = 225,888.05; thence along said State Lease No. 21629 the following courses and distances: North 66 degrees 09 minutes 52 seconds East 734.81 feet to a point having Coordinates of X = 2,113,642.00 and Y = 226,185.00, North 60 degrees 16 minutes 01 second East 1,788.46 feet to a point having Coordinates of X = 2,115,195.00 and Y = 227,072.00, North 40 degrees 21 minutes 27 seconds East 1,249.31 feet to a point having Coordinates of X = 2,116,004.00 and Y = 228,024.00, North 02 degrees 07 minutes 22 seconds East 1,268.87 feet to a point having Coordinates of X = 2,116,051.00 and Y = 229,292.00, North 75 degrees 53 minutes 16 seconds West 2,009.65 feet to a point having Coordinates of X = 2,114,102.00 and Y = 229,782.00, South 87 degrees 58 minutes 45 seconds West 1,132.84 feet to a point on the Northwest corner of said State Lease No. 21629 and the Northeast corner of said State Lease No. 21629 having Coordinates of X = 2,112,969.86 and Y = 229,742.05; thence North 6,972.24 feet to the point of beginning, containing approximately **2,328 acres**, all as more particularly outlined on a plat on file in the Office of Mineral Resources, Department of Natural Resources. All bearings, distances and coordinates are based on Louisiana Coordinate System of 1927, (North or South Zone), where applicable.

NOTE: The above description of the Tract nominated for the purpose of acquiring a mineral lease or a geophysical agreement has been provided and corrected, where required, exclusively by the nominating party. Any mineral lease or geophysical agreement selected from this Tract and awarded by the Louisiana State Mineral and Energy Board shall be without warranty of any kind, either express, implied or statutory including, but not limited to, title or the implied warranties of merchantability and fitness for a particular purpose.

An error or omission in the nominating party's Tract description may require that a State mineral lease or geophysical agreement be modified, canceled or abrogated due to the existence of conflicting leases, operating agreements, private claims or other future obligations or conditions within the Tract described. In such case, however, the Louisiana State Mineral and Energy Board shall not be obligated to refund

any consideration paid by the Lessee prior to such modification, cancellation or abrogation including, but not limited to, bonuses, rentals and royalties.

NOTE: The State of Louisiana does hereby reserve, and this lease shall be subject to, the imprescriptible right of surface use in the nature of a servitude in favor of the Department of Natural Resources, including its Offices and Commissions, for the sole purpose of implementing, constructing, servicing and maintaining approved coastal zone management and/or restoration projects. Utilization of any and all rights derived under this lease by the mineral lessee, its agents, successors or assigns, shall not interfere with nor hinder the reasonable surface use by the Department of Natural Resources, its Offices or Commissions, as herein above reserved.

NOTE: This tract is located in an area designated by the Louisiana Legislature or the Wildlife and Fisheries Commission as a Public Oyster Seed Ground or Reservation. Surface activity within the boundaries of these designated Public Oyster Seed Grounds or Reservations is prohibited.

NOTE: The Office of Mineral Resources will require a minimum bonus of \$200 per acre and a minimum royalty of 22.5%.


Applicant: ACADIAN LAND SERVICES, L.L.C.

Bidder	Cash Payment	Price/Acre	Rental	Oil	Gas	Other

Legend

16080007

Active_Leases



TRACT 44576 - Terrebonne Parish, Louisiana

All of the lands now or formerly constituting the beds and bottoms of all water bodies of every nature and description as to which title is vested in the State of Louisiana, together with all islands arising therein and other lands formed by accretion or by reliction, where allowed by law, excepting tax adjudicated lands, and not presently under mineral lease on August 10, 2016, situated in Terrebonne Parish, Louisiana, and more particularly described as follows: Beginning at a point having Coordinates of X = 2,083,544.14 and Y = 218,234.30; thence East 18,480.00 feet to a point having Coordinates of X = 2,102,024.14 and Y = 218,234.30; thence South approximately 6,877 feet to a point on the Northern boundary of State Lease No. 725, as amended; thence along the boundary of said State Lease No. 725, as amended, the following courses: West approximately 3,111 feet to a point, South 2,966.19 feet to a point, South 89 degrees 24 minutes 50 seconds West 5,280.28 feet to its Westernmost Northwest corner, South approximately 229 feet along the most Western boundary of said State Lease No. 725, as amended, to a point; thence West approximately 10,089 feet to a point having Coordinates of X = 2,083,544.14 and Y = 208,107.84; thence North 10,126.45 feet to the point of beginning, **LESS AND EXCEPT** any right, title, and interest in lands owned by and not under lease from the State of Louisiana, on behalf of the Terrebonne Parish School Board, situated in Section 16, Township 21 South, Range 14 East, Terrebonne Parish, Louisiana, contained within the above described tract, containing approximately **2,002 acres**, all as more particularly outlined on a plat on file in the Office of Mineral Resources, Department of Natural Resources. All bearings, distances and coordinates are based on Louisiana Coordinate System of 1927, (North or South Zone), where applicable.

NOTE: The above description of the Tract nominated for the purpose of acquiring a mineral lease or a geophysical agreement has been provided and corrected, where required, exclusively by the nominating party. Any mineral lease or geophysical agreement selected from this Tract and awarded by the Louisiana State Mineral and Energy Board shall be without warranty of any kind, either express, implied or statutory including, but not limited to, title or the implied warranties of merchantability and fitness for a particular purpose.

An error or omission in the nominating party's Tract description may require that a State mineral lease or geophysical agreement be modified, canceled or abrogated due to the existence of conflicting leases, operating agreements, private claims or other future obligations or conditions within the Tract described. In such case, however, the Louisiana State Mineral and Energy Board shall not be obligated to refund any consideration paid by the Lessee prior to such modification, cancellation or abrogation including, but not limited to, bonuses, rentals and royalties.

NOTE: The State of Louisiana does hereby reserve, and this lease shall be subject to, the imprescriptible right of surface use in the nature of a

servitude in favor of the Department of Natural Resources, including its Offices and Commissions, for the sole purpose of implementing, constructing, servicing and maintaining approved coastal zone management and/or restoration projects. Utilization of any and all rights derived under this lease by the mineral lessee, its agents, successors or assigns, shall not interfere with nor hinder the reasonable surface use by the Department of Natural Resources, its Offices or Commissions, as herein above reserved.

NOTE: This tract is located in an area designated by the Louisiana Legislature or the Wildlife and Fisheries Commission as a Public Oyster Seed Ground or Reservation. Surface activity within the boundaries of these designated Public Oyster Seed Grounds or Reservations is prohibited.

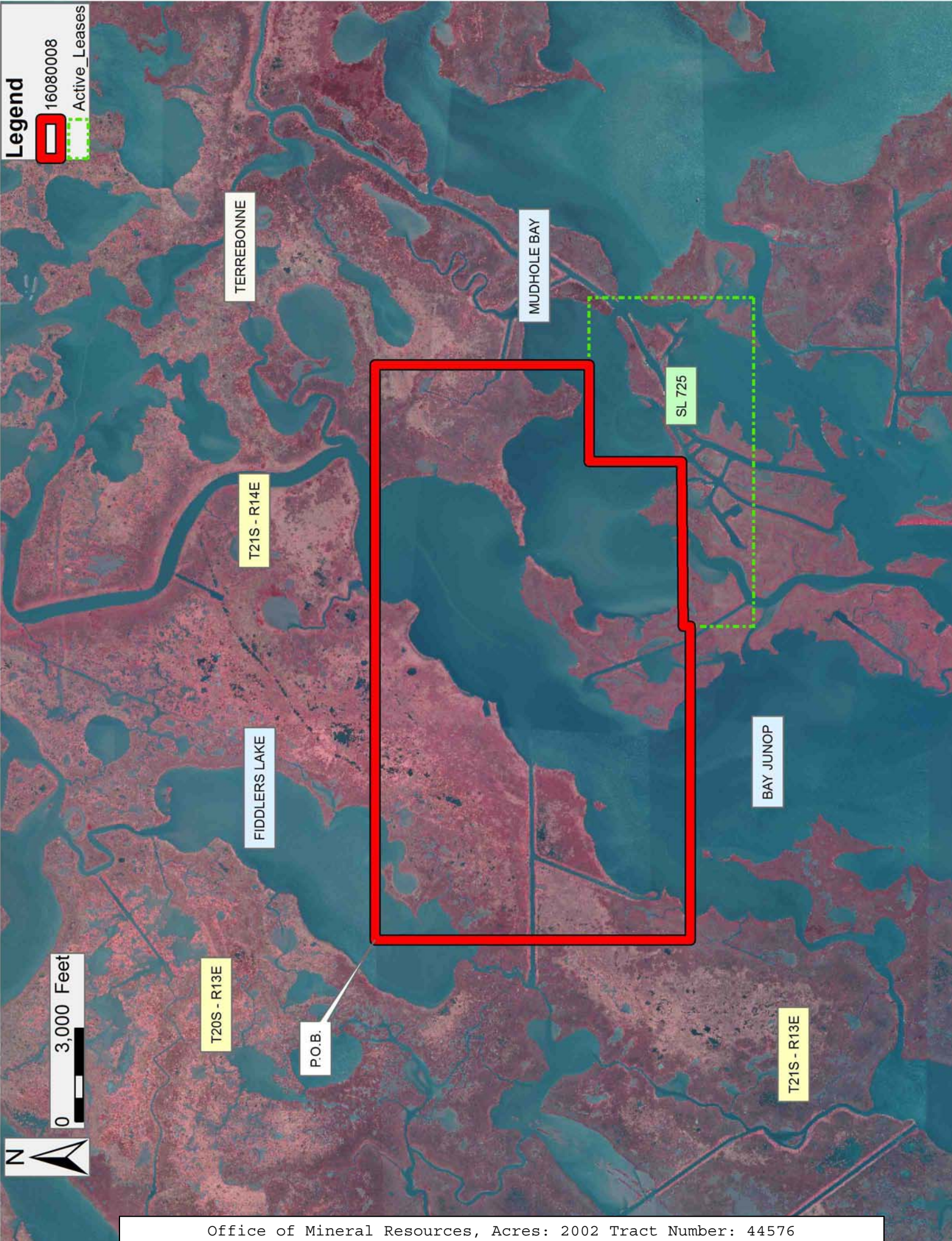
NOTE: The Office of Mineral Resources will require a minimum bonus of \$200 per acre and a minimum royalty of 22.5%.

Applicant: ACADIAN LAND SERVICES, L.L.C.

Bidder	Cash Payment	Price/Acre	Rental	Oil	Gas	Other

Legend

16080008
Active_Leases



TRACT 44577 - Terrebonne Parish, Louisiana

All of the lands now or formerly constituting the beds and bottoms of all water bodies of every nature and description as to which title is vested in the State of Louisiana, together with all islands arising therein and other lands formed by accretion or by reliction, where allowed by law, excepting tax adjudicated lands, and not presently under mineral lease on August 10, 2016, situated in Terrebonne Parish, Louisiana, and more particularly described as follows: Beginning at a point having Coordinates of X = 2,102,024.14 and Y = 218,234.30; thence East 18,480.00 feet to a point having Coordinates of X = 2,120,504.14 and Y = 218,234.30; thence South 9,158.40 feet to a point having Coordinates of X = 2,120,504.14 and Y = 209,075.90; thence West approximately 16,311 feet to a point on the Eastern boundary of State Lease No. 725, as amended, thence North approximately 2,281 feet along the Eastern boundary of said State Lease No. 725, as amended, to its Northeast corner; thence West approximately 2,169 feet along the Northern boundary of said State Lease No 725, as amended, to a point; thence North approximately 6,877 feet to the point of beginning, containing approximately **1,795 acres**, all as more particularly outlined on a plat on file in the Office of Mineral Resources, Department of Natural Resources. All bearings, distances and coordinates are based on Louisiana Coordinate System of 1927, (North or South Zone), where applicable.

NOTE: The above description of the Tract nominated for the purpose of acquiring a mineral lease or a geophysical agreement has been provided and corrected, where required, exclusively by the nominating party. Any mineral lease or geophysical agreement selected from this Tract and awarded by the Louisiana State Mineral and Energy Board shall be without warranty of any kind, either express, implied or statutory including, but not limited to, title or the implied warranties of merchantability and fitness for a particular purpose.

An error or omission in the nominating party's Tract description may require that a State mineral lease or geophysical agreement be modified, canceled or abrogated due to the existence of conflicting leases, operating agreements, private claims or other future obligations or conditions within the Tract described. In such case, however, the Louisiana State Mineral and Energy Board shall not be obligated to refund any consideration paid by the Lessee prior to such modification, cancellation or abrogation including, but not limited to, bonuses, rentals and royalties.

NOTE: The State of Louisiana does hereby reserve, and this lease shall be subject to, the imprescriptible right of surface use in the nature of a servitude in favor of the Department of Natural Resources, including its Offices and Commissions, for the sole purpose of implementing, constructing, servicing and maintaining approved coastal zone management and/or restoration projects. Utilization of any and all rights derived under this lease by the mineral lessee, its agents, successors or assigns,

shall not interfere with nor hinder the reasonable surface use by the Department of Natural Resources, its Offices or Commissions, as herein above reserved.

NOTE: This tract is located in an area designated by the Louisiana Legislature or the Wildlife and Fisheries Commission as a Public Oyster Seed Ground or Reservation. Surface activity within the boundaries of these designated Public Oyster Seed Grounds or Reservations is prohibited.

NOTE: The Office of Mineral Resources will require a minimum bonus of \$200 per acre and a minimum royalty of 22.5%.

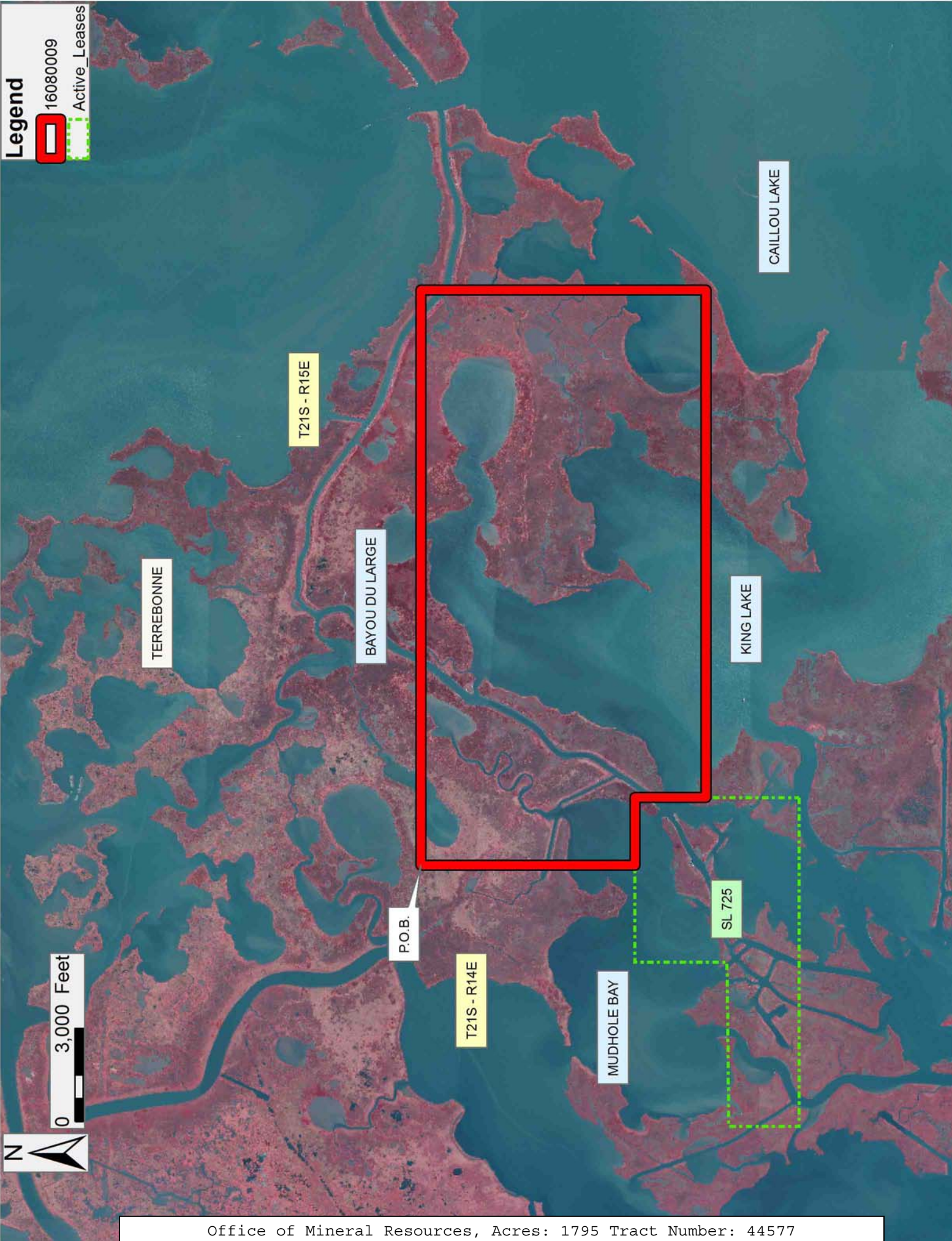
Applicant: ACADIAN LAND SERVICES, L.L.C.

Bidder	Cash Payment	Price/Acre	Rental	Oil	Gas	Other

Legend

16080009

Active_Leases



TRACT 44578 - Terrebonne Parish, Louisiana

All of the lands now or formerly constituting the beds and bottoms of all water bodies of every nature and description as to which title is vested in the State of Louisiana, together with all islands arising therein and other lands formed by accretion or by reliction, where allowed by law, excepting tax adjudicated lands, and not presently under mineral lease on August 10, 2016, situated in Terrebonne Parish, Louisiana, and more particularly described as follows: Beginning at a point having Coordinates of X = 2,083,544.14 and Y = 208,107.84; thence East approximately 10,089 feet to a point on the most Western boundary of State Lease No. 725, as amended; thence South approximately 2,030 feet along the boundary of said State Lease No. 725, as amended, to its Southwest corner; thence East approximately 8,391 feet along the Southern Boundary of said State Lease No. 725, as amended, to a point; thence South approximately 6,323 feet to a point having Coordinates of X = 2,102,024.14 and Y = 199,754.30; thence West 18,480.00 feet to a point having Coordinates of X = 2,083,544.14 and Y = 199,754.30; thence North 8,353.55 feet to the point of beginning, containing approximately **2,030 acres**, all as more particularly outlined on a plat on file in the Office of Mineral Resources, Department of Natural Resources. All bearings, distances and coordinates are based on Louisiana Coordinate System of 1927, (North or South Zone), where applicable.

NOTE: The above description of the Tract nominated for the purpose of acquiring a mineral lease or a geophysical agreement has been provided and corrected, where required, exclusively by the nominating party. Any mineral lease or geophysical agreement selected from this Tract and awarded by the Louisiana State Mineral and Energy Board shall be without warranty of any kind, either express, implied or statutory including, but not limited to, title or the implied warranties of merchantability and fitness for a particular purpose.

An error or omission in the nominating party's Tract description may require that a State mineral lease or geophysical agreement be modified, canceled or abrogated due to the existence of conflicting leases, operating agreements, private claims or other future obligations or conditions within the Tract described. In such case, however, the Louisiana State Mineral and Energy Board shall not be obligated to refund any consideration paid by the Lessee prior to such modification, cancellation or abrogation including, but not limited to, bonuses, rentals and royalties.

NOTE: The State of Louisiana does hereby reserve, and this lease shall be subject to, the imprescriptible right of surface use in the nature of a servitude in favor of the Department of Natural Resources, including its Offices and Commissions, for the sole purpose of implementing, constructing, servicing and maintaining approved coastal zone management and/or restoration projects. Utilization of any and all rights derived under this lease by the mineral lessee, its agents, successors or assigns, shall not interfere with nor hinder the reasonable surface use by the

Department of Natural Resources, its Offices or Commissions, as herein above reserved.

NOTE: This tract is located in an area designated by the Louisiana Legislature or the Wildlife and Fisheries Commission as a Public Oyster Seed Ground or Reservation. Surface activity within the boundaries of these designated Public Oyster Seed Grounds or Reservations is prohibited.

NOTE: The Office of Mineral Resources will require a minimum bonus of \$200 per acre and a minimum royalty of 22.5%.

Applicant: ACADIAN LAND SERVICES, L.L.C.

Bidder	Cash Payment	Price/Acre	Rental	Oil	Gas	Other

Legend

16080010

Active_Leases



0 3,000 Feet

