

TRACT 40030 - Caddo and Red River Parishes, Louisiana

All of the lands now or formerly constituting the beds and bottoms of all water bodies of every nature and description as to which title is vested in the State of Louisiana, together with all islands arising therein and other lands formed by accretion or by reliction, where allowed by law, excepting tax adjudicated lands, and not presently under mineral lease on August 13, 2008, situated in Caddo and Red River Parishes, Louisiana, and more particularly described as follows: Beginning at the Northeast corner of State Lease No. 19460 having Coordinates of X = 1,682,807.00 and Y = 572,800.00; thence East 10,273.74 feet to a point having Coordinates of X = 1,693,080.74 and Y = 572,800.00; thence South 15,806.00 feet to a point on the North boundary of State Lease No. 19124 having Coordinates of X = 1,693,080.74 and Y = 556,994.00; thence West 10,394.74 feet along the North boundary of said State Lease No. 19124 to its Northwest corner having Coordinates of X = 1,682,686.00 and Y = 556,994.00; thence Westerly approximately 5,260 feet to the Southeast corner of State Lease No. 17914, as amended; thence Northerly approximately 5,254 feet along the East boundary of said State Lease No. 17914 to its Northeast corner; thence Northerly approximately 316 feet to the Southeast corner of State Lease No. 19398, also being the Westernmost Southwest corner of State Lease No. 17948, as amended, having a Coordinate of Y = 562,654.00; thence along the boundary of said State Lease No. 17948 the following courses: East approximately 180 feet to a corner having Coordinates of X = 1,677,660.00 and Y = 562,654.00; South approximately 273 feet to a corner having a Coordinate of X = 1,677,660.00; Easterly approximately 5,063 feet to its Southeast corner; Northerly approximately 5,245 feet to its Northeast corner and Westerly approximately 16 feet along the North boundary of said State Lease No. 17948 to the Southeast corner of said State Lease No. 19460 having a Coordinate of X = 1,682,807.00; thence North approximately 5,215 feet along the East boundary of said State Lease No. 19460 to the point of beginning, **LESS AND EXCEPT**, that portion, if any, of State Lease No. 17914, as amended, and State Lease No. 17948, as amended, that may lie within the above described tract, containing approximately **31 acres**, all as more particularly outlined on a plat on file in the Office of Mineral Resources, Department of Natural Resources. All bearings, distances and coordinates are based on Louisiana Coordinate System of 1927, (North or South Zone), where applicable.

NOTE: The above description of the Tract nominated for lease has been provided and corrected, where required, exclusively by the nomination party. Any mineral lease selected from this Tract and awarded by the Louisiana State Mineral Board shall be without warranty of any kind, either express, implied, or statutory, including, but not limited to, the implied warranties of merchantability and fitness for a particular purpose. Should the mineral lease awarded by the Louisiana State Mineral Board be subsequently modified, cancelled or abrogated due to the existence of conflicting leases, operating agreements, private claims or other future obligations or conditions which may affect all or any portion of the leased Tract, it shall not relieve the Lessee of the obligation to pay any bonus due thereon to the Louisiana State Mineral Board, nor shall

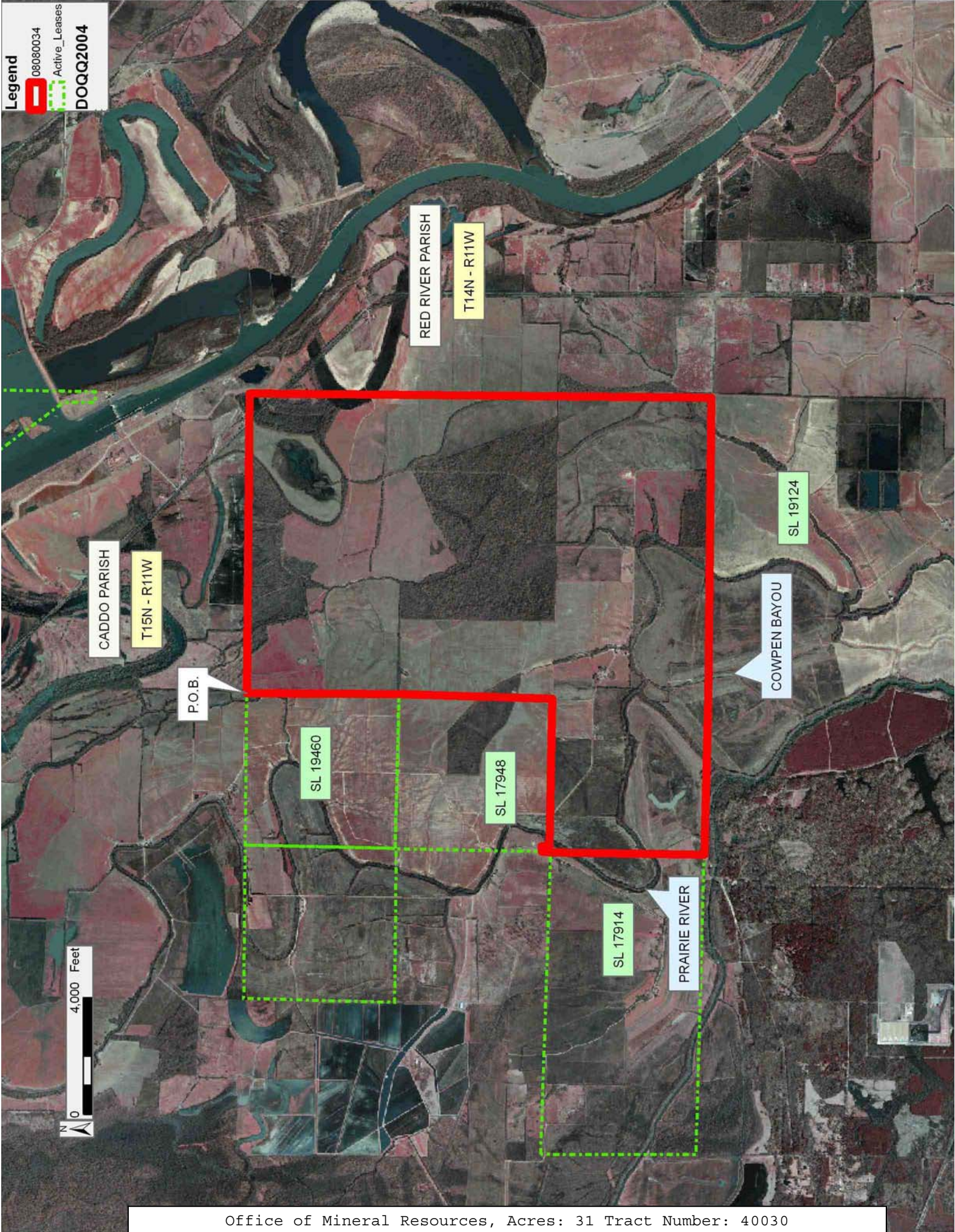
the Louisiana State Mineral Board be obligated to refund any consideration paid by the Lessor prior to such modification, cancellation, or abrogation, including, but not limited to, bonuses, rentals and royalties.

Applicant: THEOPHILUS OIL, GAS & LAND SERVICES, LLC

Bidder	Cash Payment	Price/Acre	Rental	Oil	Gas	Other

Legend

- 08080034
- Active_Leases
- DOQQ2004



TRACT 40031 - De Soto and Red River Parishes, Louisiana

All of the lands now or formerly constituting the beds and bottoms of all water bodies of every nature and description as to which title is vested in the State of Louisiana, together with all islands arising therein and other lands formed by accretion or by reliction, where allowed by law, excepting tax adjudicated lands, and not presently under mineral lease on August 13, 2008, situated in De Soto and Red River Parishes, Louisiana, and more particularly described as follows: Beginning at the Northeast corner of State Lease No. 18741, also being the Southwest corner of State Lease No. 18605 having Coordinates of X = 1,662,100.00 and Y = 567,600.00; thence along the boundary of said State Lease No. 18605 the following courses: East 5,100.00 feet to a corner having Coordinates of X = 1,667,200.00 and Y = 567,600.00; North 5,200.00 feet to a corner having Coordinates of X = 1,667,200.00 and Y = 572,800.00 and East 5,154.27 feet to the Northwest corner of State Lease No. 17948, as amended, having Coordinates of X = 1,672,354.27 and Y = 572,800.00; thence Southerly approximately 5,168 feet along the West boundary of said State Lease No. 17948 to its Westernmost Southwest corner, also being the Northwest corner of State Lease No. 19398; thence Southerly approximately 4,980 feet along the West boundary of said State Lease No. 19398 to its Southwest corner having Coordinates of X = 1,672,126.08 and Y = 562,654.00; thence South approximately 189 feet to a point on the North boundary of State Lease No. 17914, as amended, having a Coordinate of X = 1,672,126.08; thence along the boundary of said State Lease No. 17914 the following courses: Westerly approximately 5,008 feet to its Northwest corner and Southerly approximately 5,320 feet to its Southwest corner; thence Westerly approximately 5,260 feet to a point having Coordinates of X = 1,661,898.48 and Y = 557,263.51; thence North 1,575.25 feet to the Southeast corner of State Lease No. 19180 having Coordinates of X = 1,661,898.48 and Y = 558,838.76; thence North 4,061.24 feet along the East boundary of said State Lease No. 19180 to its Northeast corner located on the South boundary of said State Lease No. 18741 having Coordinates of X = 1,661,898.48 and Y = 562,900.00; thence along the boundary of said State Lease No. 18741 the following courses: East 201.52 feet to its Southeast corner having Coordinates of X = 1,662,100.00 and Y = 562,900.00 and North 4,700.00 feet to the point of beginning, **LESS AND EXCEPT** that portion, if any, of State Lease No. 17914, as amended, State Lease No. 17948, as amended, and State Lease No. 19398 which may lie within the above described tract, **ALSO LESS AND EXCEPT** any portion of the Bayou Pierre Wildlife Management Area that may lie within the above described tract, (This tract includes only waterbottoms claimed and owned by the state and specifically excludes any land which the state or Wildlife and Fisheries may claim or own and to which the mineral rights are vested in them), containing approximately **14 acres**, all as more particularly outlined on a plat on file in the Office of Mineral Resources, Department of Natural Resources. All bearings, distances and coordinates are based on Louisiana Coordinate System of 1927, (North or South Zone), where applicable.

NOTE: The above description of the Tract nominated for lease has been provided and corrected, where required, exclusively by the nomination party. Any mineral lease selected from this Tract and awarded by the Louisiana State Mineral Board shall be without warranty of any kind, either express, implied, or statutory, including, but not limited to, the implied warranties of merchantability and fitness for a particular purpose. Should the mineral lease awarded by the Louisiana State Mineral Board be subsequently modified, cancelled or abrogated due to the existence of conflicting leases, operating agreements, private claims or other future obligations or conditions which may affect all or any portion of the leased Tract, it shall not relieve the Lessee of the obligation to pay any bonus due thereon to the Louisiana State Mineral Board, nor shall the Louisiana State Mineral Board be obligated to refund any consideration paid by the Lessor prior to such modification, cancellation, or abrogation, including, but not limited to, bonuses, rentals and royalties.

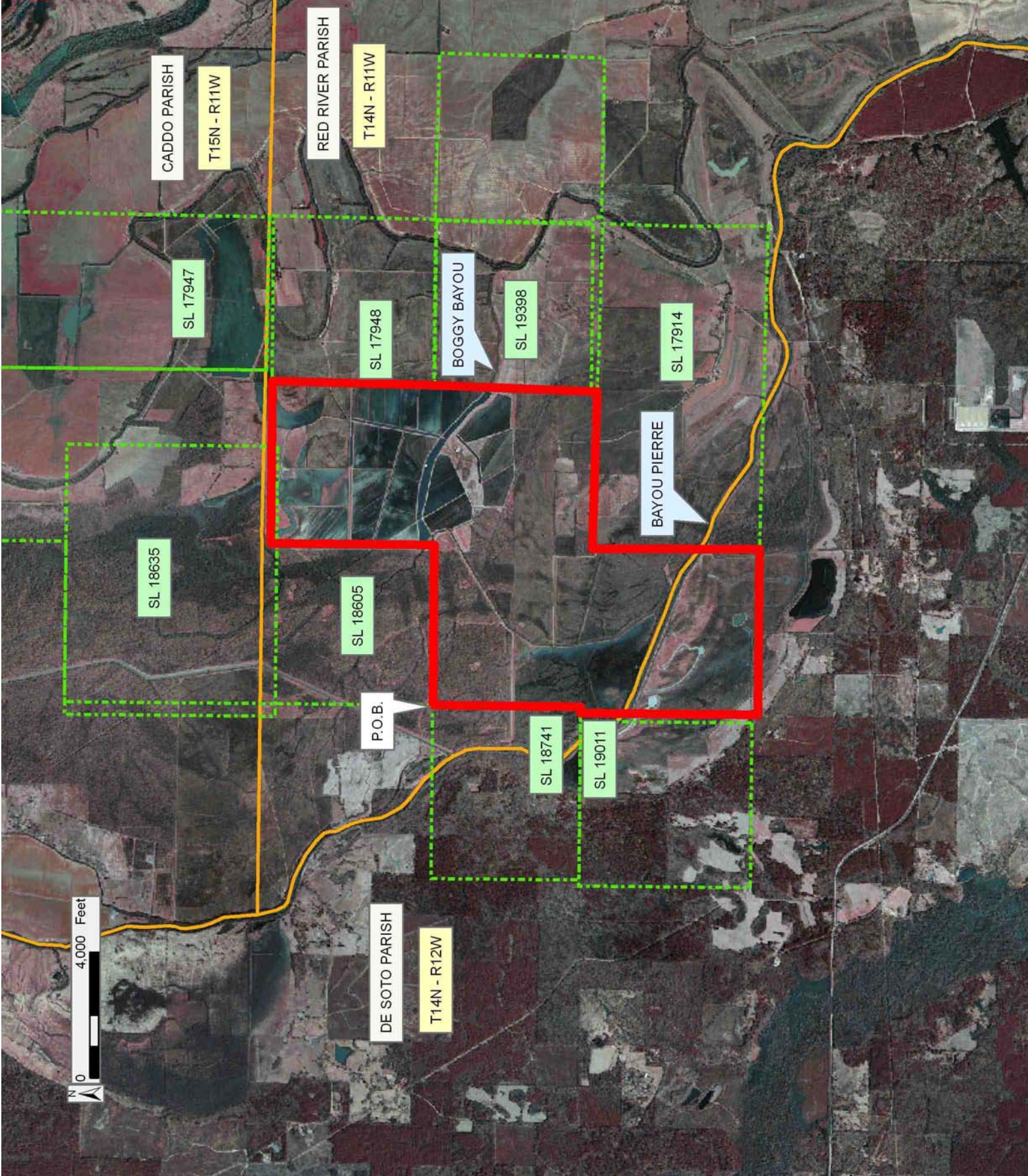
Applicant: THEOPHILUS OIL, GAS & LAND SERVICES, LLC

Bidder	Cash Payment	Price/Acre	Rental	Oil	Gas	Other

Legend

- █ 08080038
- - - Active_Leases
- █ Counties

DOQQ2004



TRACT 40032 - De Soto and Red River Parishes, Louisiana

All of the lands now or formerly constituting the beds and bottoms of all water bodies of every nature and description as to which title is vested in the State of Louisiana, together with all islands arising therein and other lands formed by accretion or by reliction, where allowed by law, excepting tax adjudicated lands, and not presently under mineral lease on August 13, 2008, situated in De Soto and Red River Parishes, Louisiana, and more particularly described as follows: Beginning at a point having Coordinates of X = 1,661,898.48 and Y = 557,263.51; thence Easterly approximately 5,260 feet to the Southwest corner of State Lease No. 17914, as amended; thence Easterly approximately 10,265 feet along the South boundary of said State Lease No. 17914 to its Southeast corner; thence Southerly approximately 16,238 feet to a point having Coordinates of X = 1,677,426.35 and Y = 540,842.00; thence West 15,527.87 feet to a point having Coordinates of X = 1,661,898.48 and Y = 540,842.00; thence North 16,421.51 feet to the point of beginning, **LESS AND EXCEPT** that portion, if any, of State Lease No. 17914, as amended, which may lie within the above described tract, **ALSO LESS AND EXCEPT** any portion of the Bayou Pierre Wildlife Management Area that may lie within the above described tract, (This tract includes only waterbottoms claimed and owned by the state and specifically excludes any land which the state or Wildlife and Fisheries may claim or own and to which the mineral rights are vested in them), containing approximately **8 acres**, all as more particularly outlined on a plat on file in the Office of Mineral Resources, Department of Natural Resources. All bearings, distances and coordinates are based on Louisiana Coordinate System of 1927, (North or South Zone), where applicable.

NOTE: The above description of the Tract nominated for lease has been provided and corrected, where required, exclusively by the nomination party. Any mineral lease selected from this Tract and awarded by the Louisiana State Mineral Board shall be without warranty of any kind, either express, implied, or statutory, including, but not limited to, the implied warranties of merchantability and fitness for a particular purpose. Should the mineral lease awarded by the Louisiana State Mineral Board be subsequently modified, cancelled or abrogated due to the existence of conflicting leases, operating agreements, private claims or other future obligations or conditions which may affect all or any portion of the leased Tract, it shall not relieve the Lessee of the obligation to pay any bonus due thereon to the Louisiana State Mineral Board, nor shall the Louisiana State Mineral Board be obligated to refund any consideration paid by the Lessor prior to such modification, cancellation, or abrogation, including, but not limited to, bonuses, rentals and royalties.

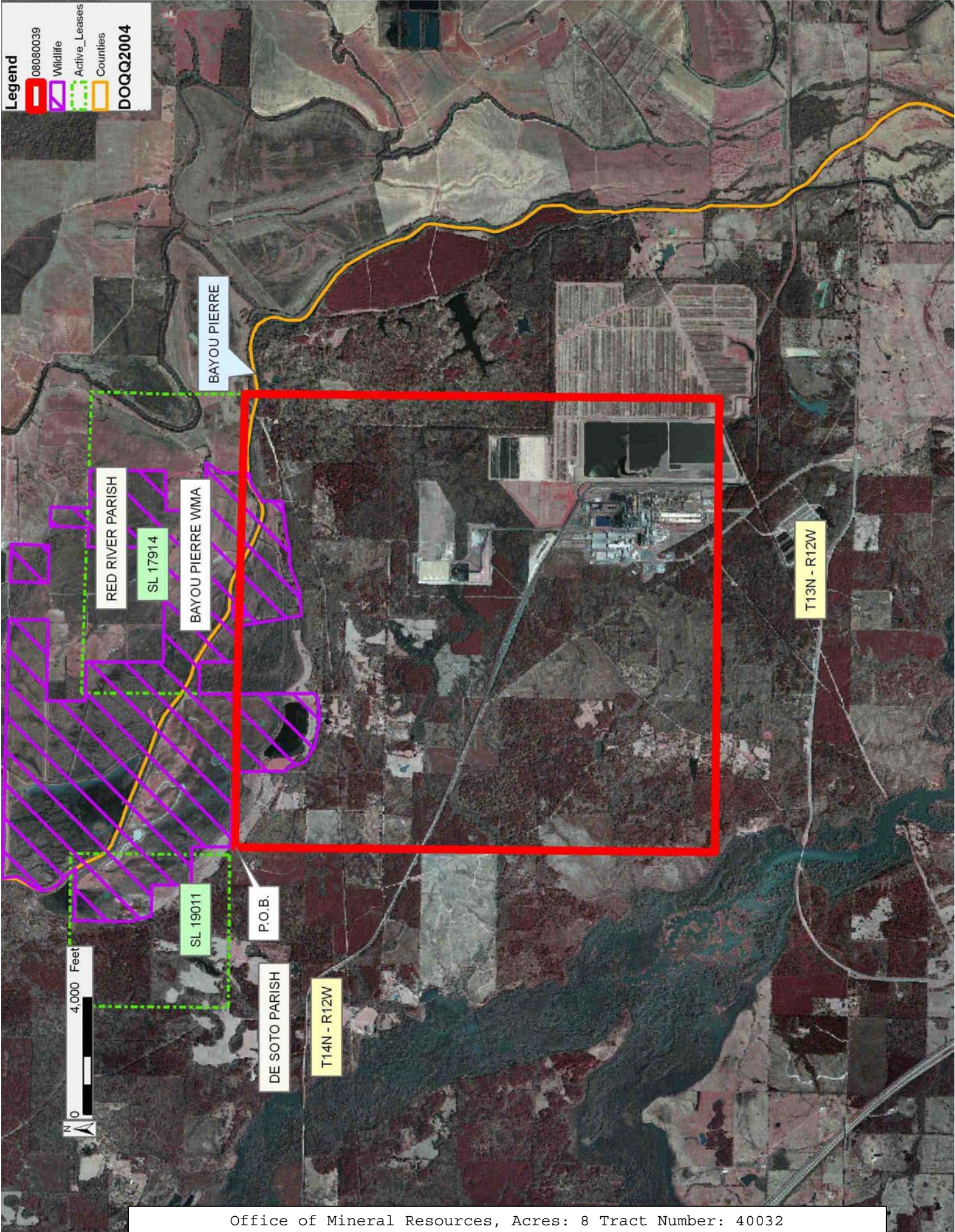
Applicant: THEOPHILUS OIL, GAS & LAND SERVICES, LLC

Bidder	Cash Payment	Price/Acre	Rental	Oil	Gas	Other

Legend

- ▬ 08080039
- ▬ Wildlife
- ▬ Active_Leases
- ▬ Counties

DOQQ2004



TRACT 40033 - Red River Parish, Louisiana

All of the lands now or formerly constituting the beds and bottoms of all water bodies of every nature and description as to which title is vested in the State of Louisiana, together with all islands arising therein and other lands formed by accretion or by reliction, where allowed by law, excepting tax adjudicated lands, and not presently under mineral lease on August 13, 2008, situated in Red River Parish, Louisiana, and more particularly described as follows: Beginning at the Northeast corner of State Lease No. 19124 having Coordinates of X = 1,698,526.00 and Y = 556,994.00; thence East 10,431.21 feet to a point having Coordinates of X = 1,708,957.21 and Y = 556,994.00; thence South 16,152.00 feet to a point having Coordinates of X = 1,708,957.21 and Y = 540,842.00; thence West 10,431.21 feet to a point on the East boundary of State Lease No. 19125 having Coordinates of X = 1,698,526.00 and Y = 540,842.00; thence North 5,506.00 feet along the East boundary of said State Lease No. 19125 to its Northeast corner, also being the Southeast corner of said State Lease No. 19124 having Coordinates of X = 1,698,526.00 and Y = 546,348.00; thence North 10,646.00 feet along the East boundary of said State Lease No. 19124 to the point of beginning, containing approximately **420 acres**, all as more particularly outlined on a plat on file in the Office of Mineral Resources, Department of Natural Resources. All bearings, distances and coordinates are based on Louisiana Coordinate System of 1927, (North or South Zone), where applicable.

NOTE: The above description of the Tract nominated for lease has been provided and corrected, where required, exclusively by the nomination party. Any mineral lease selected from this Tract and awarded by the Louisiana State Mineral Board shall be without warranty of any kind, either express, implied, or statutory, including, but not limited to, the implied warranties of merchantability and fitness for a particular purpose. Should the mineral lease awarded by the Louisiana State Mineral Board be subsequently modified, cancelled or abrogated due to the existence of conflicting leases, operating agreements, private claims or other future obligations or conditions which may affect all or any portion of the leased Tract, it shall not relieve the Lessee of the obligation to pay any bonus due thereon to the Louisiana State Mineral Board, nor shall the Louisiana State Mineral Board be obligated to refund any consideration paid by the Lessor prior to such modification, cancellation, or abrogation, including, but not limited to, bonuses, rentals and royalties.

Applicant: THEOPHILUS OIL, GAS & LAND SERVICES, LLC

Bidder	Cash Payment	Price/Acre	Rental	Oil	Gas	Other

Legend
08080037
Active_Leases
DOQQ2004



RED RIVER PARISH

T14N - R10W

RED RIVER

LOGGY BAYOU

P.O.B.

3,000 Feet

SL 19124

SL 19125

T14N - R11W

TRACT 40034 - De Soto and Red River Parishes, Louisiana

All of the lands now or formerly constituting the beds and bottoms of all water bodies of every nature and description as to which title is vested in the State of Louisiana, together with all islands arising therein and other lands formed by accretion or by reliction, where allowed by law, excepting tax adjudicated lands, and not presently under mineral lease on August 13, 2008, situated in De Soto and Red River Parishes, Louisiana, and more particularly described as follows: Beginning at the Northwest corner of State Lease No. 19124 having Coordinates of X = 1,682,686.00 and Y = 556,994.00; thence South 10,646.00 feet along the West boundary of said State Lease No. 19124 to its Southwest corner, also being the Northwest corner of State Lease No. 19125 having Coordinates of X = 1,682,686.00 and Y = 546,348.00; thence South 5,506.00 feet along the West boundary of said State Lease No. 19125 to a point having Coordinates of X = 1,682,686.00 and Y = 540,842.00; thence West 5,259.65 feet to a point having Coordinates of X = 1,677,426.35 and Y = 540,842.00; thence Northerly approximately 16,243 feet to the Southeast corner of State Lease No. 17914, as amended; thence Easterly approximately 5,260 feet to the point of beginning, containing approximately **14 acres**, all as more particularly outlined on a plat on file in the Office of Mineral Resources, Department of Natural Resources. All bearings, distances and coordinates are based on Louisiana Coordinate System of 1927, (North or South Zone), where applicable.

NOTE: The above description of the Tract nominated for lease has been provided and corrected, where required, exclusively by the nomination party. Any mineral lease selected from this Tract and awarded by the Louisiana State Mineral Board shall be without warranty of any kind, either express, implied, or statutory, including, but not limited to, the implied warranties of merchantability and fitness for a particular purpose. Should the mineral lease awarded by the Louisiana State Mineral Board be subsequently modified, cancelled or abrogated due to the existence of conflicting leases, operating agreements, private claims or other future obligations or conditions which may affect all or any portion of the leased Tract, it shall not relieve the Lessee of the obligation to pay any bonus due thereon to the Louisiana State Mineral Board, nor shall the Louisiana State Mineral Board be obligated to refund any consideration paid by the Lessor prior to such modification, cancellation, or abrogation, including, but not limited to, bonuses, rentals and royalties.

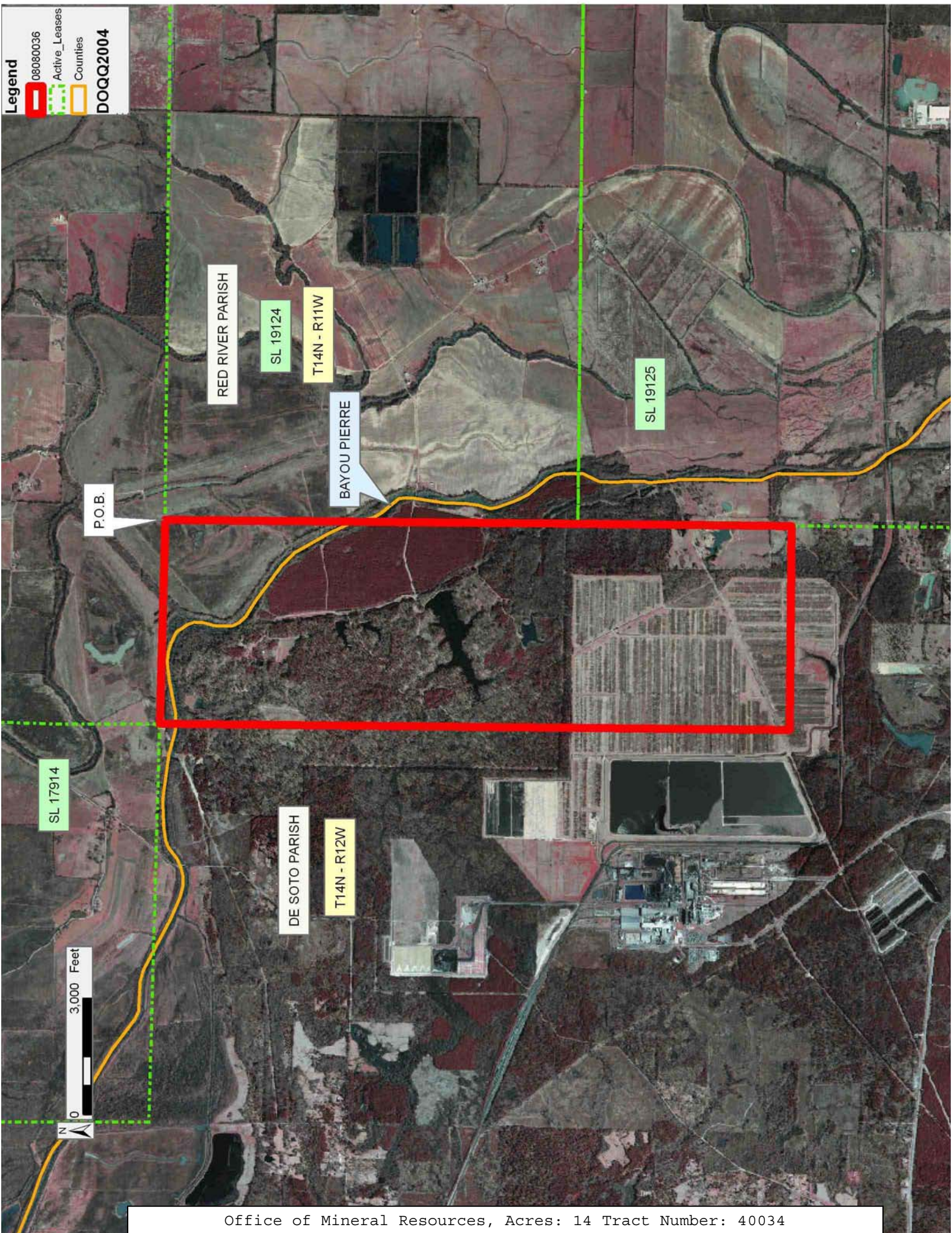
Applicant: THEOPHILUS OIL, GAS & LAND SERVICES, LLC

Bidder	Cash Payment	Price/Acre	Rental	Oil	Gas	Other

Legend

- █ 08080036
- - - Active_Leases
- █ Counties

DOQQ2004



TRACT 40035 - Catahoula and Concordia Parishes, Louisiana

All of the lands now or formerly constituting the beds and bottoms of all water bodies of every nature and description as to which title is vested in the State of Louisiana, together with all islands arising therein and other lands formed by accretion or by reliction, where allowed by law, excepting tax adjudicated lands, and not presently under mineral lease on August 13, 2008, situated in Catahoula and Concordia Parishes, Louisiana, and more particularly described as follows: Beginning at a point having Coordinates of X = 2,222,788.71 and Y = 260,358.06; thence North 2,640.00 feet to a point having Coordinates of X = 2,222,788.71 and Y = 262,998.06; thence North 88 degrees 01 minutes 07 seconds East 915.85 feet to the Southwest corner of State Lease No. 17984 having Coordinates of X = 2,223,704.01 and Y = 263,029.73; thence along the boundaries of said State Lease No. 17984 the following courses: East 1,817.70 feet to a point having Coordinates of X = 2,225,521.71 and Y = 263,029.73 and North 1,896.69 feet to a point on its East boundary having Coordinates of X = 2,225,521.71 and Y = 264,926.42; thence East 2,547.00 feet to a point having Coordinates of X = 2,228,068.71 and Y = 264,926.42; thence South 4,568.35 feet to a point having Coordinates of X = 2,228,068.71 and Y = 260,358.06; thence West 5,280.00 feet to the Point of Beginning, containing approximately **51 acres**, all as more particularly outlined on a plat on file in the Office of Mineral Resources, Department of Natural Resources. All bearings, distances and coordinates are based on Louisiana Coordinate System of 1927, (North or South Zone), where applicable.

NOTE: The above description of the Tract nominated for lease has been provided and corrected, where required, exclusively by the nomination party. Any mineral lease selected from this Tract and awarded by the Louisiana State Mineral Board shall be without warranty of any kind, either express, implied, or statutory, including, but not limited to, the implied warranties of merchantability and fitness for a particular purpose. Should the mineral lease awarded by the Louisiana State Mineral Board be subsequently modified, cancelled or abrogated due to the existence of conflicting leases, operating agreements, private claims or other future obligations or conditions which may affect all or any portion of the leased Tract, it shall not relieve the Lessee of the obligation to pay any bonus due thereon to the Louisiana State Mineral Board, nor shall the Louisiana State Mineral Board be obligated to refund any consideration paid by the Lessor prior to such modification, cancellation, or abrogation, including, but not limited to, bonuses, rentals and royalties.

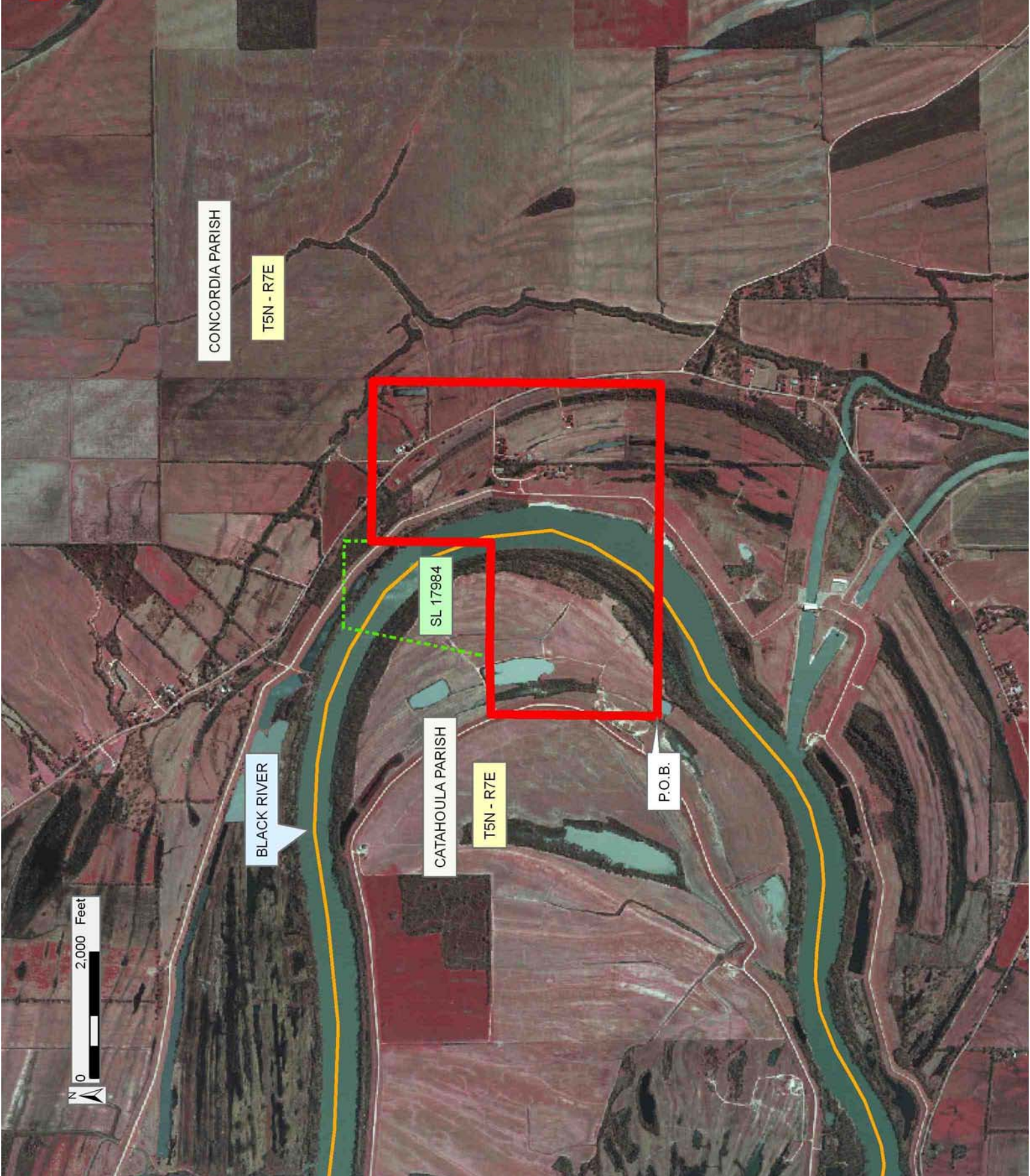
Applicant: LESLIE M COOPER

Bidder	Cash Payment	Price/Acre	Rental	Oil	Gas	Other

Legend

- ▬ 08080019
- ▬ Active_Leases
- ▬ Counties

DOQQ2004



TRACT 40036 - St. Landry Parish, Louisiana

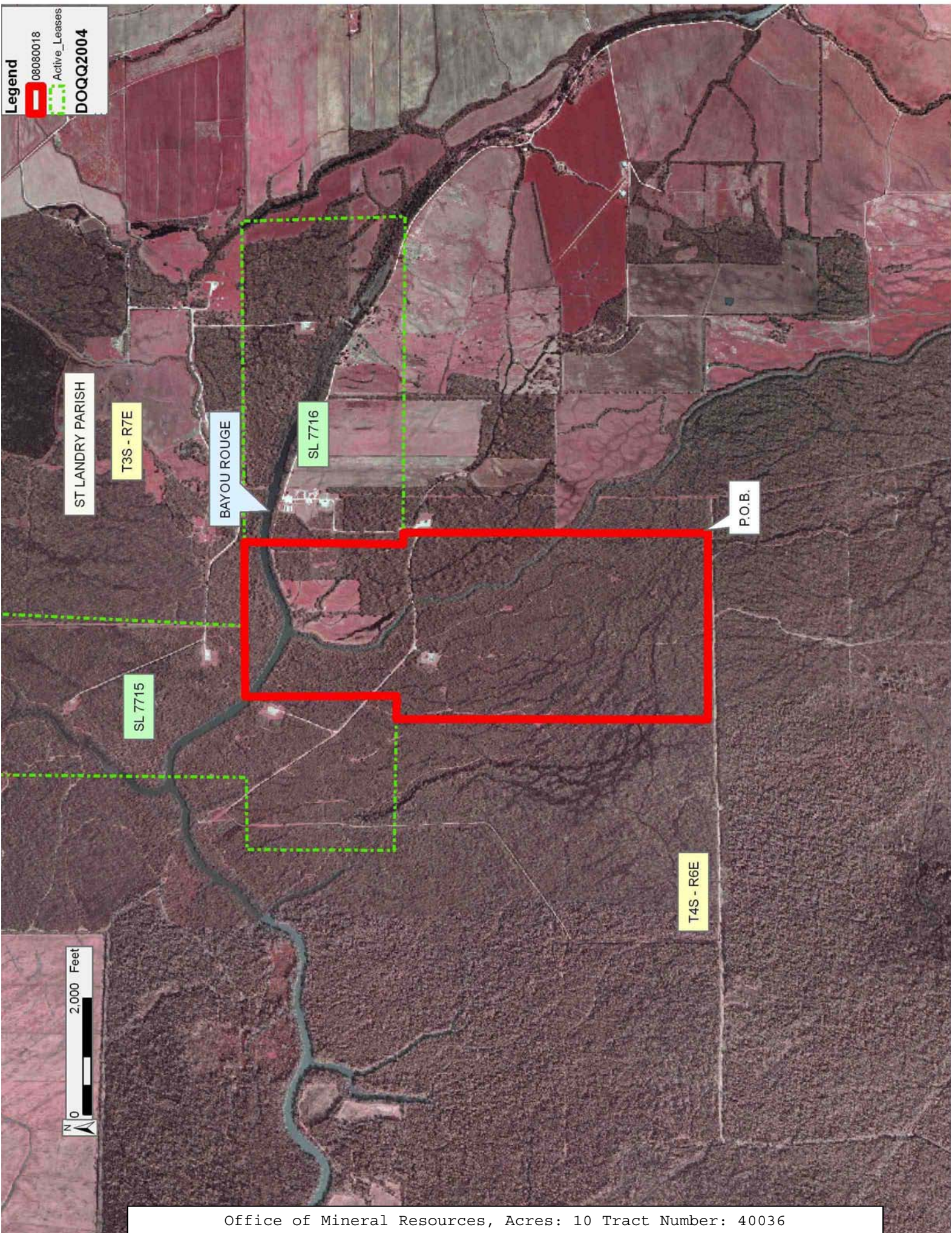
All of the lands now or formerly constituting the beds and bottoms of all water bodies of every nature and description as to which title is vested in the State of Louisiana, together with all islands arising therein and other lands formed by accretion or by reliction, where allowed by law, excepting tax adjudicated lands, and not presently under mineral lease on August 13, 2008, situated in St. Landry Parish, Louisiana, and more particularly described as follows: Beginning at a point having Coordinates of X = 1,854,167.86 and Y = 752,840.90; thence West 3206.34 feet to a point having Coordinates of X = 1,850,961.51 and Y = 752,840.90; thence Northerly approximately 5,356 feet to a point on the Southern boundary of State Lease 7715, as amended; thence along the boundary of said State Lease 7715 the following courses and distances: Easterly approximately 399 feet; Northerly approximately 2,609 feet; and Easterly approximately 1,217 feet to its Northernmost Southeast corner; thence approximately 1,441 feet to the Northwest corner of State Lease 7716, as amended; thence along the boundary of said State Lease 7716 the following courses and distances; Southerly approximately 2,732 feet and Easterly approximately 198 feet to a point on the Southern boundary of said State Lease 7716; thence Southerly approximately 5,236 feet to the point of beginning, **LESS AND EXCEPT** any portion, if any, of State Lease No. 7715 and State Lease No. 7716, that may fall within the above described tract, containing approximately **10 acres**, all as more particularly outlined on a plat on file in the Office of Mineral Resources, Department of Natural Resources. All bearings, distances and coordinates are based on Louisiana Coordinate System of 1927, (North or South Zone), where applicable.

NOTE: The above description of the Tract nominated for lease has been provided and corrected, where required, exclusively by the nomination party. Any mineral lease selected from this Tract and awarded by the Louisiana State Mineral Board shall be without warranty of any kind, either express, implied, or statutory, including, but not limited to, the implied warranties of merchantability and fitness for a particular purpose. Should the mineral lease awarded by the Louisiana State Mineral Board be subsequently modified, cancelled or abrogated due to the existence of conflicting leases, operating agreements, private claims or other future obligations or conditions which may affect all or any portion of the leased Tract, it shall not relieve the Lessee of the obligation to pay any bonus due thereon to the Louisiana State Mineral Board, nor shall the Louisiana State Mineral Board be obligated to refund any consideration paid by the Lessor prior to such modification, cancellation, or abrogation, including, but not limited to, bonuses, rentals and royalties.

Applicant: SOUTH COAST PRODUCTION COMPANY, LTD.

Bidder	Cash Payment	Price/Acre	Rental	Oil	Gas	Other

Legend
08080018
Active_Leases
DOQQ2004



N
0
2,000 Feet

TRACT 40037 - Vermilion Parish, Louisiana

All of the lands now or formerly constituting the beds and bottoms of all water bodies of every nature and description as to which title is vested in the State of Louisiana, together with all islands arising therein and other lands formed by accretion or by reliction, where allowed by law, excepting tax adjudicated lands, and not presently under mineral lease on August 13, 2008, situated in Vermilion Parish, Louisiana, and more particularly described as follows: Beginning at the Northeast corner of State Lease No. 19105 having Coordinates of X = 1,756,630.00 and Y = 487,222.00; thence West 3,218.79 feet along the North boundary of said State Lease No. 19105 to a point having Coordinates of X = 1,753,411.22 and Y = 487,222.00; thence North 6,458.42 feet to a point having Coordinates of X = 1,753,411.22 and Y = 493,680.42; thence East 10,000.00 feet to a point having Coordinates of X = 1,763,411.22 and Y = 493,680.42; thence South 81 degrees 32 minutes 08 seconds East 5,280.00 feet to a point having Coordinates of X = 1,768,633.70 and Y = 492,903.23; thence South 5,681.23 feet to a point having Coordinates of X = 1,768,633.70 and Y = 487,222.00; thence West 12,003.70 feet to the point of beginning, containing approximately **52 acres**, all as more particularly outlined on a plat on file in the Office of Mineral Resources, Department of Natural Resources. All bearings, distances and coordinates are based on Louisiana Coordinate System of 1927, (North or South Zone), where applicable.

NOTE: The above description of the Tract nominated for lease has been provided and corrected, where required, exclusively by the nomination party. Any mineral lease selected from this Tract and awarded by the Louisiana State Mineral Board shall be without warranty of any kind, either express, implied, or statutory, including, but not limited to, the implied warranties of merchantability and fitness for a particular purpose. Should the mineral lease awarded by the Louisiana State Mineral Board be subsequently modified, cancelled or abrogated due to the existence of conflicting leases, operating agreements, private claims or other future obligations or conditions which may affect all or any portion of the leased Tract, it shall not relieve the Lessee of the obligation to pay any bonus due thereon to the Louisiana State Mineral Board, nor shall the Louisiana State Mineral Board be obligated to refund any consideration paid by the Lessor prior to such modification, cancellation, or abrogation, including, but not limited to, bonuses, rentals and royalties.

NOTE: The Office of Mineral Resources will require a minimum bonus of \$500 per acre and a minimum royalty of 25%.

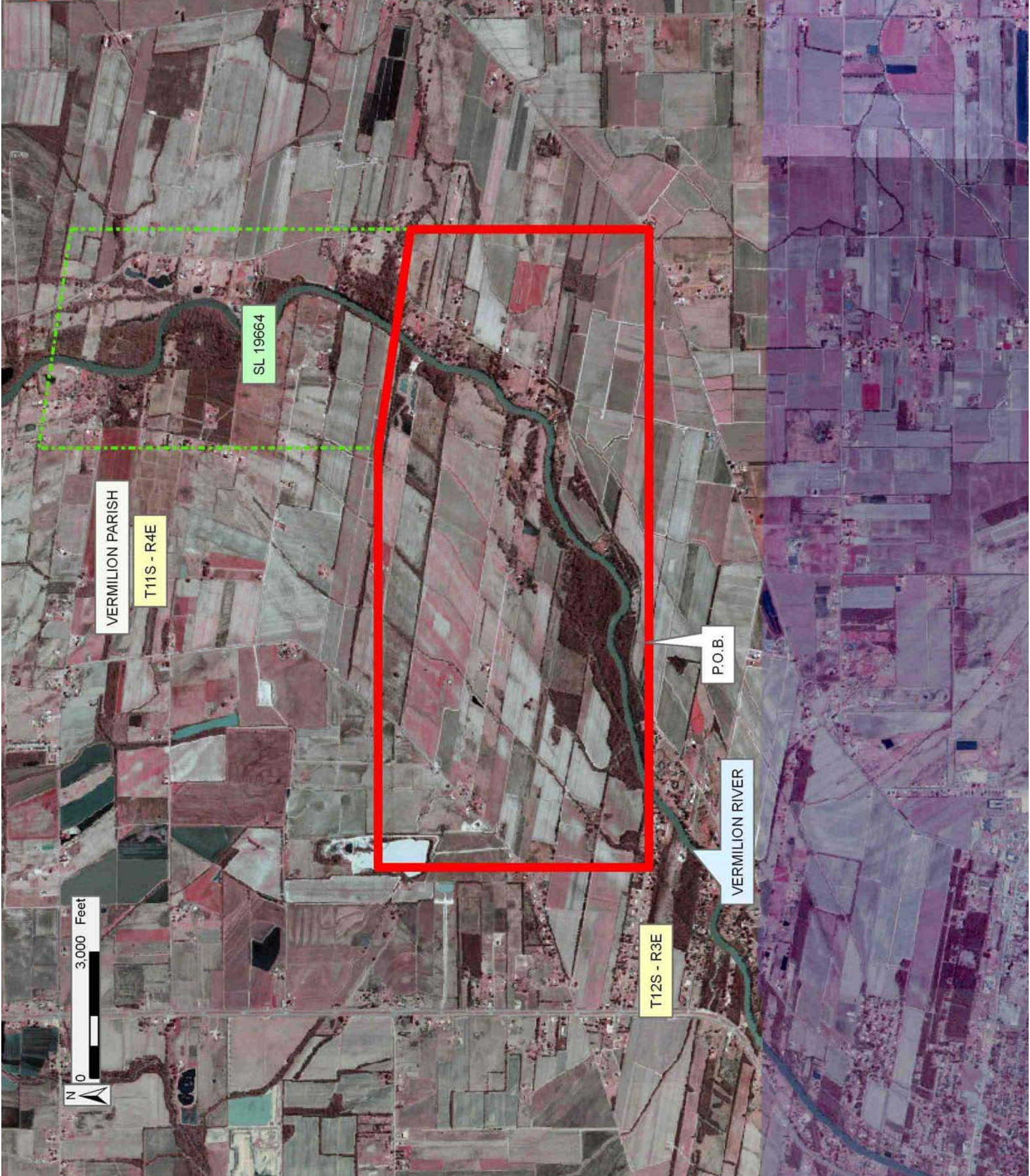
NOTE: The State of Louisiana does hereby reserve, and this lease shall be subject to, the imprescriptible right of surface use in the nature of a servitude in favor of the Department of Natural Resources, including its Offices and Commissions, for the sole purpose of implementing, constructing, servicing and maintaining approved coastal zone management and/or restoration projects. Utilization of any and all rights derived under this lease by the mineral lessee, its agents, successors or assigns,

shall not interfere with nor hinder the reasonable surface use by the Department of Natural Resources, its Offices or Commissions, as herein above reserved.

Applicant: LAFAYETTE LAND SERVICES LLC

Bidder	Cash Payment	Price/Acre	Rental	Oil	Gas	Other

Legend
08080081
Active_Leases
DOQQ2004



TRACT 40038 - St. Charles Parish, Louisiana

All of the lands now or formerly constituting the beds and bottoms of all water bodies of every nature and description as to which title is vested in the State of Louisiana, together with all islands arising therein and other lands formed by accretion or by reliction, where allowed by law, excepting tax adjudicated lands, and not presently under mineral lease on August 13, 2008, situated in St. Charles Parish, Louisiana, and more particularly described as follows: Beginning at a point having Coordinates of X = 2,325,920.66 and Y = 383,975.67; thence North 83 degrees 46 minutes 32 seconds East 10,443.56 feet to the Northwest Corner of State Lease No. 19199 having Coordinates of X = 2,336,302.65 and Y = 385,108.00; thence along the boundaries of said State Lease No. 19199 the following courses: South 16 degrees 44 minutes 09 seconds East 858.03 feet to a point having Coordinates of X = 2,336,549.73 and Y = 384,286.31 and North 72 degrees 05 minutes 07 seconds East 1,666.05 feet to its Southeast corner having Coordinates of X = 2,338,135.00 and Y = 384,798.79, also being a point on the West boundary of State Lease No. 19232; thence South 1,400.37 feet along the West boundary of said State Lease No. 19232 to the Northeast corner of State Lease No. 19470 having Coordinates of X = 2,338,135.00 and Y = 383,398.42; thence along the boundary of said State Lease No. 19470 the following courses: South 80 degrees 34 minutes 29 seconds West 2,164.22 feet to a point having Coordinates of X = 2,336,000.00 and Y = 383,044.00, South 12 degrees 33 minutes 41 seconds West 2,299.03 feet to a point having Coordinates of X = 2,335,500.00 and Y = 380,800.00, South 73 degrees 04 minutes 21 seconds East 2,404.16 feet to a point having Coordinates of X = 2,337,800.00 and Y = 380,100.00 and North 88 degrees 53 minutes 18 seconds East 335.06 feet to its Southeast corner and a point on the West boundary of said State Lease No. 19232 having Coordinates of X = 2,338,135.00 and Y = 380,106.50; thence South 441.27 feet along the West boundary of said State Lease No. 19232 to the Northwest corner of State Lease No. 19200 having Coordinates of X = 2,338,135.00 and Y = 379,665.23; thence along the boundaries of said State Lease No. 19200 the following courses: North 85 degrees 57 minutes 27 seconds West 236.05 feet to a point having Coordinates of X = 2,337,899.54 and Y = 379,681.87; South 03 degrees 56 minutes 50 seconds West 2,534.86 feet to a point having Coordinates of X = 2,337,725.05 and Y = 377,153.02; and South 86 degrees 12 minutes 04 seconds West 410.85 feet to its Southeast corner also being a point on the West boundary of said State Lease 19232 having Coordinates of X = 2,338,135.00 and Y = 377,125.80; thence South 1,750.13 feet along the boundary of said State Lease No. 19232 to a point on its West boundary having Coordinates of X = 2,338,135.00 and Y = 375,375.67; thence West 1,737.43 feet to a point on the East boundary of State Lease No. 19201 having Coordinates of X = 2,336,397.57 and Y = 375,375.67; thence along the boundary of said State Lease No. 19201 the following courses: North 20 degrees 42 minutes 16 seconds West 5,273.94 feet to a point having Coordinates of X = 2,334,533.00 and Y = 380,309.00, South 71 degrees 21 minutes 39 seconds West 2,040.00 feet to a point having Coordinates of X = 2,332,600.00 and Y = 379,657.00 and South 17 degrees 57 minutes 47 seconds East 4,500.72 feet to a point having Coordinates of X = 2,333,988.04 and Y

= 375,375.67; thence West 8,067.38 feet to a point having Coordinates of X = 2,325,920.66 and Y = 375,375.67; thence North 8,600.00 feet to the Point of Beginning, containing approximately **2,155.09 acres**, all as more particularly outlined on a plat on file in the Office of Mineral Resources, Department of Natural Resources. All bearings, distances and coordinates are based on Louisiana Coordinate System of 1927, (North or South Zone), where applicable.

NOTE: The above description of the Tract nominated for lease has been provided and corrected, where required, exclusively by the nomination party. Any mineral lease selected from this Tract and awarded by the Louisiana State Mineral Board shall be without warranty of any kind, either express, implied, or statutory, including, but not limited to, the implied warranties of merchantability and fitness for a particular purpose. Should the mineral lease awarded by the Louisiana State Mineral Board be subsequently modified, cancelled or abrogated due to the existence of conflicting leases, operating agreements, private claims or other future obligations or conditions which may affect all or any portion of the leased Tract, it shall not relieve the Lessee of the obligation to pay any bonus due thereon to the Louisiana State Mineral Board, nor shall the Louisiana State Mineral Board be obligated to refund any consideration paid by the Lessor prior to such modification, cancellation, or abrogation, including, but not limited to, bonuses, rentals and royalties.

NOTE: The State of Louisiana does hereby reserve, and this lease shall be subject to, the imprescriptible right of surface use in the nature of a servitude in favor of the Department of Natural Resources, including its Offices and Commissions, for the sole purpose of implementing, constructing, servicing and maintaining approved coastal zone management and/or restoration projects. Utilization of any and all rights derived under this lease by the mineral lessee, its agents, successors or assigns, shall not interfere with nor hinder the reasonable surface use by the Department of Natural Resources, its Offices or Commissions, as herein above reserved.

Applicant: LESLIE M COOPER

Bidder	Cash Payment	Price/Acre	Rental	Oil	Gas	Other

Legend

- 08080005
- Active_Leases

ST CHARLES PARISH

LAKE SALVADOR

SL 19207

SL 19199

SL 19470

SL 19206

SL 19200

SL 19232

SL 19201

P.O.B.



TRACT 40039 - St. Charles Parish, Louisiana

All of the lands now or formerly constituting the beds and bottoms of all water bodies of every nature and description as to which title is vested in the State of Louisiana, together with all islands arising therein and other lands formed by accretion or by reliction, where allowed by law, excepting tax adjudicated lands, and not presently under mineral lease on August 13, 2008, situated in St. Charles Parish, Louisiana, and more particularly described as follows: Beginning at a point having Coordinates of X = 2,313,260.66 and Y = 383,975.67; thence East 12,660.00 feet to a point having Coordinates of X = 2,325,920.66 and Y = 383,975.67; thence South 8,600.00 feet to a point having Coordinates of X = 2,325,920.66 and Y = 375,375.67; thence West 12,660.00 feet to a point having Coordinates of X = 2,313,260.66 and Y = 375,375.67; thence North 8,600.00 feet to the Point of Beginning, containing approximately **2,499.45 acres**, all as more particularly outlined on a plat on file in the Office of Mineral Resources, Department of Natural Resources. All bearings, distances and coordinates are based on Louisiana Coordinate System of 1927, (North or South Zone), where applicable.

NOTE: The above description of the Tract nominated for lease has been provided and corrected, where required, exclusively by the nomination party. Any mineral lease selected from this Tract and awarded by the Louisiana State Mineral Board shall be without warranty of any kind, either express, implied, or statutory, including, but not limited to, the implied warranties of merchantability and fitness for a particular purpose. Should the mineral lease awarded by the Louisiana State Mineral Board be subsequently modified, cancelled or abrogated due to the existence of conflicting leases, operating agreements, private claims or other future obligations or conditions which may affect all or any portion of the leased Tract, it shall not relieve the Lessee of the obligation to pay any bonus due thereon to the Louisiana State Mineral Board, nor shall the Louisiana State Mineral Board be obligated to refund any consideration paid by the Lessor prior to such modification, cancellation, or abrogation, including, but not limited to, bonuses, rentals and royalties.

NOTE: The State of Louisiana does hereby reserve, and this lease shall be subject to, the imprescriptible right of surface use in the nature of a servitude in favor of the Department of Natural Resources, including its Offices and Commissions, for the sole purpose of implementing, constructing, servicing and maintaining approved coastal zone management and/or restoration projects. Utilization of any and all rights derived under this lease by the mineral lessee, its agents, successors or assigns, shall not interfere with nor hinder the reasonable surface use by the Department of Natural Resources, its Offices or Commissions, as herein above reserved.

NOTE: The above Tract is located upon a restricted scenic river and all operations in this area must be conducted in strict conformity with the regulations of the Corps of Engineers, U.S. Army.

Applicant: LESLIE M COOPER

Bidder	Cash Payment	Price/Acre	Rental	Oil	Gas	Other

ST CHARLES PARISH

LAKE SALVADOR



T15S - R21E

P.O.B.

