

**TRACT 40020 - Caddo Parish, Louisiana**

All of the lands now or formerly constituting the beds and bottoms of all water bodies of every nature and description as to which title is vested in the State of Louisiana, together with all islands arising therein and other lands formed by accretion or by reliction, where allowed by law, excepting tax adjudicated lands, and not presently under mineral lease on August 13, 2008, situated in Caddo Parish, Louisiana, and more particularly described as follows: Beginning at a point having Coordinates of X = 1,614,260.00 and Y = 637,320.80; thence Easterly approximately 5,973 feet to the Northwest corner of State Lease No. 6316, as amended; thence along the boundary of said State Lease No. 6316 the following courses: Southerly approximately 5,445 feet and Easterly approximately 9,962 feet to its Southeast corner; thence Southerly approximately 5,318 feet to a point having Coordinates of X = 1,630,101.90 and Y = 626,500.00; thence East 550.55 feet to the Northwest corner of State Lease No. 19121, as amended, having Coordinates of X = 1,630,652.45 and Y = 626,500.00; thence South 00 degrees 52 minutes 29 seconds West 5,610.10 feet along the West boundary of said State Lease No. 19121 to its Southwest corner having Coordinates of X = 1,630,566.81 and Y = 620,890.55; thence West 16,306.81 feet to a point having Coordinates of X = 1,614,260.00 and Y = 620,890.55; thence North 16,430.25 feet to the point of beginning, **LESS AND EXCEPT** that portion, if any, of State Lease No. 6316, as amended, that may lie within the above described tract, containing approximately **10 acres**, all as more particularly outlined on a plat on file in the Office of Mineral Resources, Department of Natural Resources. All bearings, distances and coordinates are based on Louisiana Coordinate System of 1927, (North or South Zone), where applicable.

NOTE: The above description of the Tract nominated for lease has been provided and corrected, where required, exclusively by the nomination party. Any mineral lease selected from this Tract and awarded by the Louisiana State Mineral Board shall be without warranty of any kind, either express, implied, or statutory, including, but not limited to, the implied warranties of merchantability and fitness for a particular purpose. Should the mineral lease awarded by the Louisiana State Mineral Board be subsequently modified, cancelled or abrogated due to the existence of conflicting leases, operating agreements, private claims or other future obligations or conditions which may affect all or any portion of the leased Tract, it shall not relieve the Lessee of the obligation to pay any bonus due thereon to the Louisiana State Mineral Board, nor shall the Louisiana State Mineral Board be obligated to refund any consideration paid by the Lessor prior to such modification, cancellation, or abrogation, including, but not limited to, bonuses, rentals and royalties.

Applicant: THEOPHILUS OIL, GAS & LAND SERVICES, LLC

Bidder	Cash Payment	Price/Acre	Rental	Oil	Gas	Other



**Legend**  
08080053  
Active\_Leases  
DOQQ2004





**TRACT 40021 - Bossier and Caddo Parishes, Louisiana**

All of the lands now or formerly constituting the beds and bottoms of all water bodies of every nature and description as to which title is vested in the State of Louisiana, together with all islands arising therein and other lands formed by accretion or by reliction, where allowed by law, excepting tax adjudicated lands, and not presently under mineral lease on August 13, 2008, situated in Bossier and Caddo Parishes, Louisiana, and more particularly described as follows: Beginning at a point having Coordinates of X = 1,645,728.17 and Y = 636,082.80; thence Easterly approximately 10,669 feet to the Northwest corner of State Lease No. 16305; thence Southerly approximately 5,283 feet along the West boundary of said State Lease No. 16305 to a point of intersection with the North boundary of State Lease No. 16035 having a Coordinate of Y = 630,800.00; thence West approximately 5,280 feet along the North boundary of said State Lease No. 16035 to its Northwest corner, also being the Northeast corner of State Lease No. 16034 having Coordinates of X = 1,651,095.00 and Y = 630,800.00; thence West 4,695.00 feet along the North boundary of said State Lease No. 16034 to its Northwest corner, also being the Northeast corner of State Lease No. 18243 having Coordinates of X = 1,646,400.00 and Y = 630,800.00; thence West 671.83 feet along the North boundary of said State Lease No. 18243 to a point having Coordinates of X = 1,645,728.17 and Y = 630,800.00; thence North 5,282.80 feet to the point of beginning, **LESS AND EXCEPT** that portion, if any, of State Lease No. 16305 that may lie within the above described tract, (This tract includes only waterbottoms claimed and owned by the state and specifically excludes any land which the state may claim or own and to which the mineral rights are vested in the state), containing approximately **204 acres**, all as more particularly outlined on a plat on file in the Office of Mineral Resources, Department of Natural Resources. All bearings, distances and coordinates are based on Louisiana Coordinate System of 1927, (North or South Zone), where applicable.

NOTE: The above description of the Tract nominated for lease has been provided and corrected, where required, exclusively by the nomination party. Any mineral lease selected from this Tract and awarded by the Louisiana State Mineral Board shall be without warranty of any kind, either express, implied, or statutory, including, but not limited to, the implied warranties of merchantability and fitness for a particular purpose. Should the mineral lease awarded by the Louisiana State Mineral Board be subsequently modified, cancelled or abrogated due to the existence of conflicting leases, operating agreements, private claims or other future obligations or conditions which may affect all or any portion of the leased Tract, it shall not relieve the Lessee of the obligation to pay any bonus due thereon to the Louisiana State Mineral Board, nor shall the Louisiana State Mineral Board be obligated to refund any consideration paid by the Lessor prior to such modification, cancellation, or abrogation, including, but not limited to, bonuses, rentals and royalties.

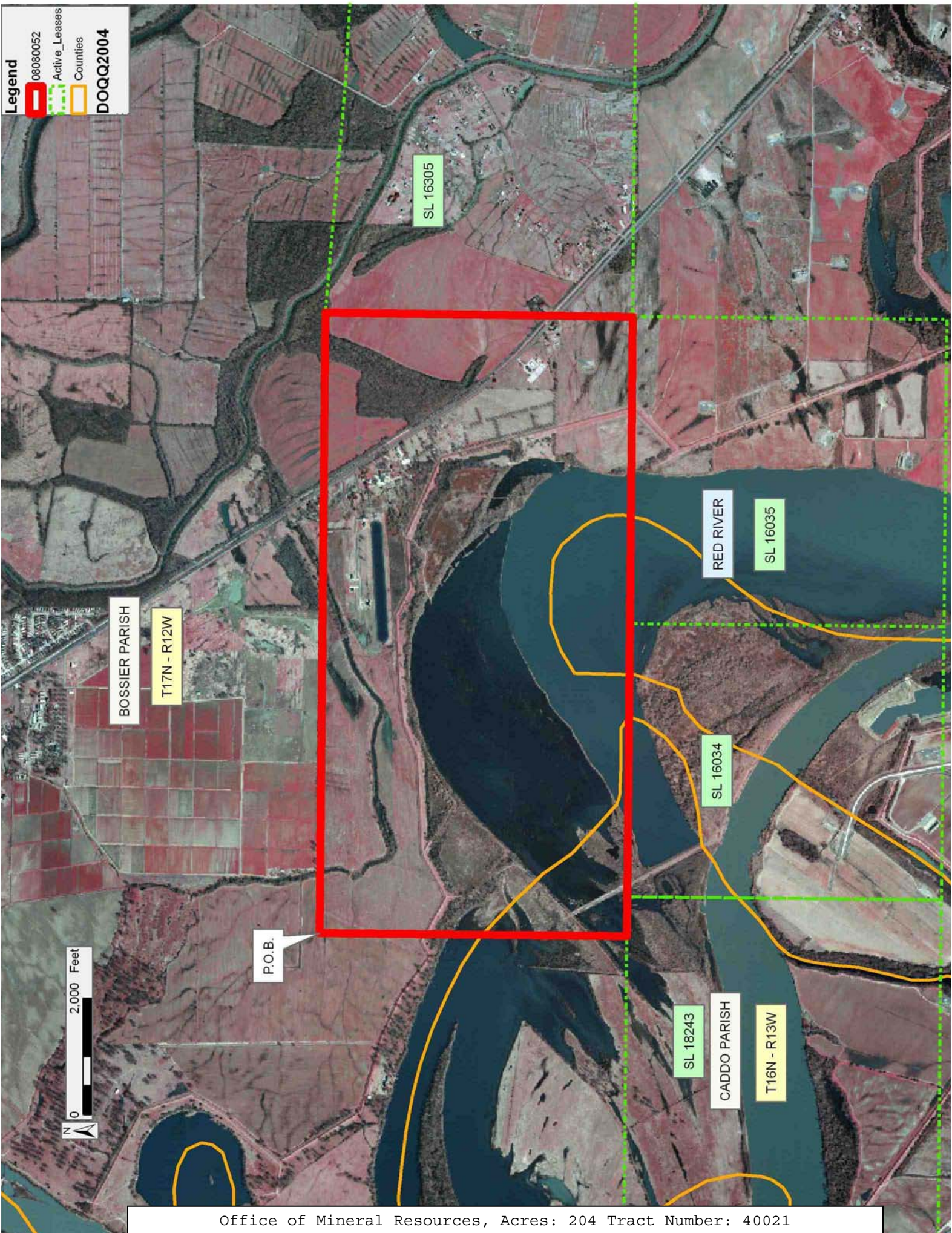
Applicant: THEOPHILUS OIL, GAS & LAND SERVICES, LLC

Bidder	Cash Payment	Price/Acre	Rental	Oil	Gas	Other



**Legend**

- 08080052
- Active\_Leases
- Counties
- DOQQ2004





**TRACT 40022 - Caddo Parish, Louisiana**

All of the lands now or formerly constituting the beds and bottoms of all water bodies of every nature and description as to which title is vested in the State of Louisiana, together with all islands arising therein and other lands formed by accretion or by reliction, where allowed by law, excepting tax adjudicated lands, and not presently under mineral lease on August 13, 2008, situated in Caddo Parish, Louisiana, and more particularly described as follows: Beginning at a point having Coordinates of X = 1,630,101.90 and Y = 626,500.00; thence Northerly approximately 5,319 feet to the Southeast corner of State Lease No. 6316, as amended; thence Northerly approximately 2,147 feet along the East boundary of said State Lease No. 6316 to its point of intersection with the Southwest boundary or a projection thereof of State Lease No. 11555, as amended; thence South 36 degrees 52 minutes 12 seconds East approximately 2,733 feet along the Southwest boundary or a projection thereof of said State Lease No. 11555 to its Southernmost Southwest corner, said point also being the Northwest corner of State Lease No. 11855 having Coordinates of X = 1,631,740.00 and Y = 631,780.00; thence South 36 degrees 52 minutes 12 seconds East 6,600.00 feet along the Southwest boundary of said State Lease No. 11855 to its Southernmost corner, also being the Northeast corner of State Lease No. 19121, as amended, having Coordinates of X = 1,635,700.00 and Y = 626,500.00; thence West 5,047.55 feet along the North boundary of said State Lease No. 19121 to its Northwest corner having Coordinates of X = 1,630,652.45 and Y = 626,500.00; thence West 550.55 feet to the point of beginning, **LESS AND EXCEPT** that portion, if any, of State Lease No. 6316, as amended, and State Lease No. 11155, as amended, that may lie within the above described tract, containing approximately **4 acres**, all as more particularly outlined on a plat on file in the Office of Mineral Resources, Department of Natural Resources. All bearings, distances and coordinates are based on Louisiana Coordinate System of 1927, (North or South Zone), where applicable.

NOTE: The above description of the Tract nominated for lease has been provided and corrected, where required, exclusively by the nomination party. Any mineral lease selected from this Tract and awarded by the Louisiana State Mineral Board shall be without warranty of any kind, either express, implied, or statutory, including, but not limited to, the implied warranties of merchantability and fitness for a particular purpose. Should the mineral lease awarded by the Louisiana State Mineral Board be subsequently modified, cancelled or abrogated due to the existence of conflicting leases, operating agreements, private claims or other future obligations or conditions which may affect all or any portion of the leased Tract, it shall not relieve the Lessee of the obligation to pay any bonus due thereon to the Louisiana State Mineral Board, nor shall the Louisiana State Mineral Board be obligated to refund any consideration paid by the Lessor prior to such modification, cancellation, or abrogation, including, but not limited to, bonuses, rentals and royalties.

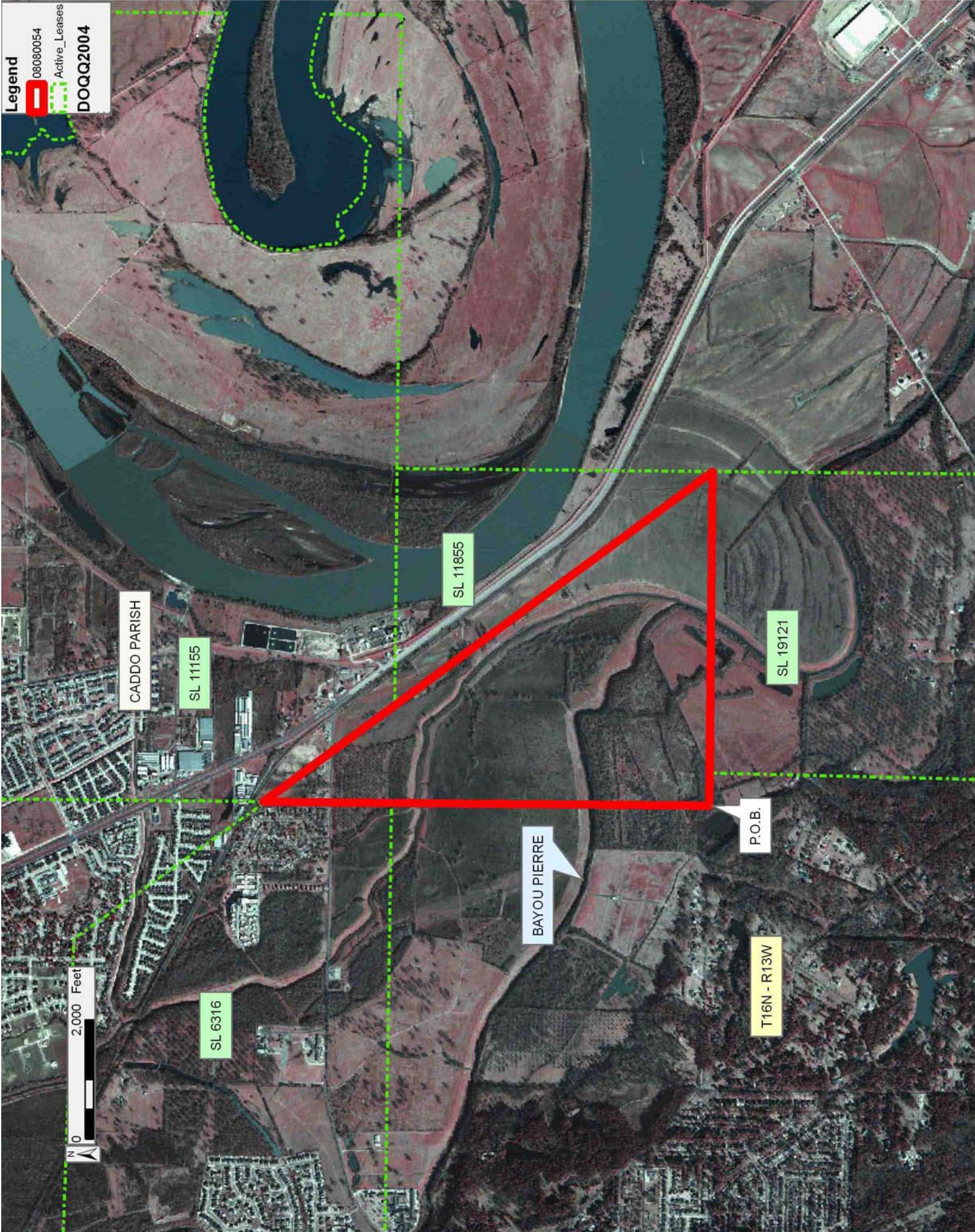
Applicant: THEOPHILUS OIL, GAS & LAND SERVICES, LLC

Bidder	Cash Payment	Price/Acre	Rental	Oil	Gas	Other



**Legend**

- 08080054
- Active\_Leases
- DOQQ2004





**TRACT 40023 - Bossier Parish, Louisiana**

All of the lands now or formerly constituting the beds and bottoms of all water bodies of every nature and description as to which title is vested in the State of Louisiana, together with all islands arising therein and other lands formed by accretion or by reliction, where allowed by law, excepting tax adjudicated lands, and not presently under mineral lease on August 13, 2008, situated in Bossier Parish, Louisiana, and more particularly described as follows: Beginning at the Northeast corner of State Lease No. 18641 having Coordinates of X = 1,693,325.95 and Y = 619,652.40; thence East 16,067.00 feet to a point having Coordinates of X = 1,709,392.95 and Y = 619,652.40; thence South 16,177.92 feet to the Northeast corner of State Lease No. 18245 and State Lease No. 18276 having Coordinates of X = 1,709,392.95 and Y = 603,474.48; thence West 10,787.30 feet along the North boundary of said State Lease No. 18245 and said State Lease No. 18276 to their Northwest corner, also being the Northeast corner of State Lease No. 17734 having Coordinates of X = 1,698,605.65 and Y = 603,474.48; thence West 5,279.70 feet along the North boundary of said State Lease No. 17734 to its Northwest corner, also being a point on the East boundary of State Lease No. 17732 having Coordinates of X = 1,693,325.95 and Y = 603,474.48; thence North 10,913.66 feet along the East boundary of said State Lease No. 17732 to its Northeast corner, also being the Southeast corner of said State Lease No. 18641 having Coordinates of X = 1,693,325.95 and Y = 614,388.14; thence North 5,264.26 feet along the East boundary of said State Lease No. 18641 to the point of beginning, **LESS AND EXCEPT** any portion of the Loggy Bayou Wildlife Management Area that may lie within the above described tract, (This tract includes only waterbottoms claimed and owned by the state and specifically excludes any land which the state or Wildlife and Fisheries may claim or own and to which the mineral rights are vested in them), containing approximately **46 acres**, all as more particularly outlined on a plat on file in the Office of Mineral Resources, Department of Natural Resources. All bearings, distances and coordinates are based on Louisiana Coordinate System of 1927, (North or South Zone), where applicable.

NOTE: The above description of the Tract nominated for lease has been provided and corrected, where required, exclusively by the nomination party. Any mineral lease selected from this Tract and awarded by the Louisiana State Mineral Board shall be without warranty of any kind, either express, implied, or statutory, including, but not limited to, the implied warranties of merchantability and fitness for a particular purpose. Should the mineral lease awarded by the Louisiana State Mineral Board be subsequently modified, cancelled or abrogated due to the existence of conflicting leases, operating agreements, private claims or other future obligations or conditions which may affect all or any portion of the leased Tract, it shall not relieve the Lessee of the obligation to pay any bonus due thereon to the Louisiana State Mineral Board, nor shall the Louisiana State Mineral Board be obligated to refund any consideration paid by the Lessor prior to such modification, cancellation, or abrogation, including, but not limited to, bonuses, rentals and royalties.

Applicant: THEOPHILUS OIL, GAS & LAND SERVICES, LLC

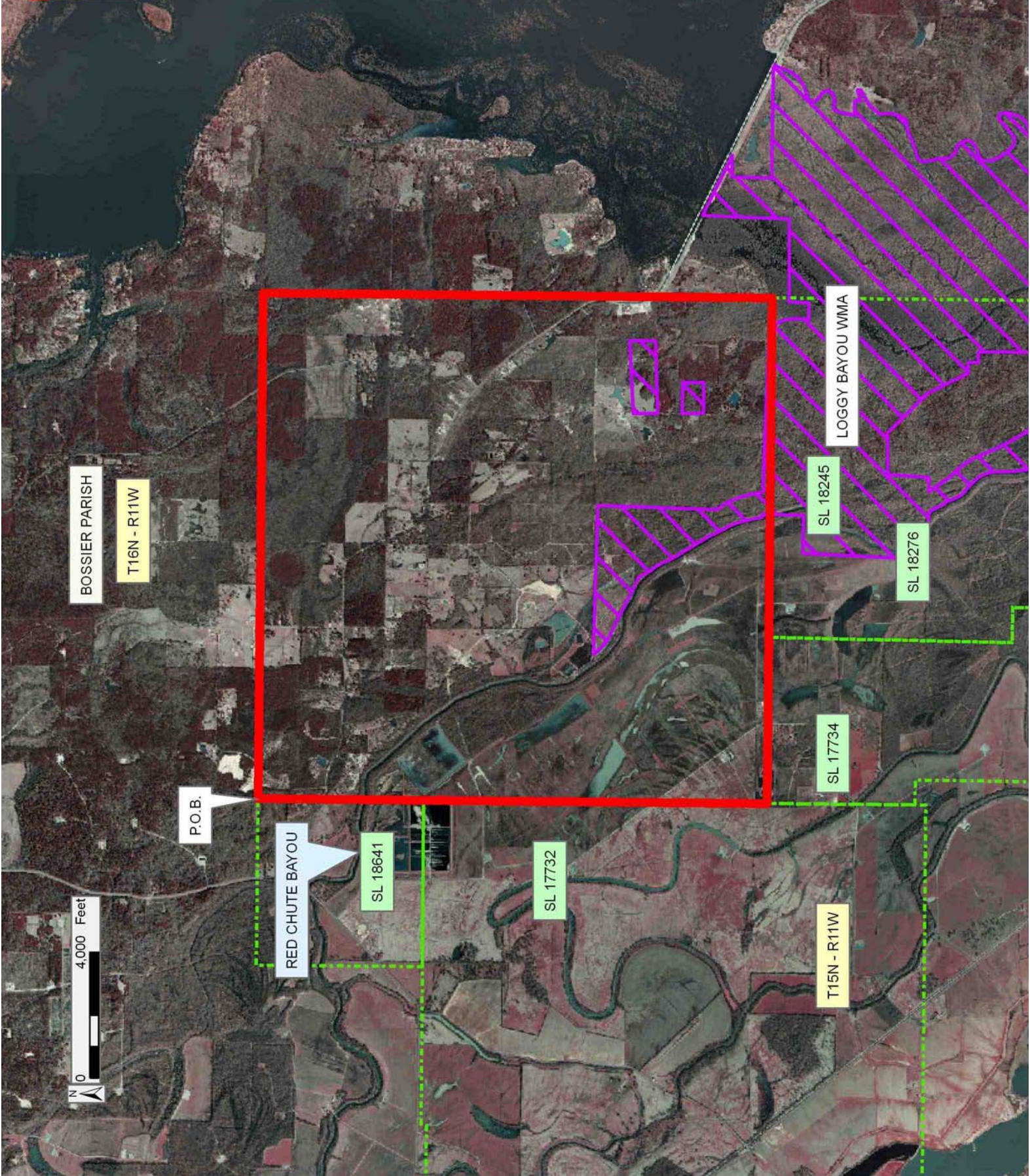
Bidder	Cash Payment	Price/Acre	Rental	Oil	Gas	Other



**Legend**

- 08080051
- Wildlife
- Active\_Leases

**DOQQ2004**





**TRACT 40024 - Bienville and Bossier Parishes, Louisiana**

All of the lands now or formerly constituting the beds and bottoms of all water bodies of every nature and description as to which title is vested in the State of Louisiana, together with all islands arising therein and other lands formed by accretion or by reliction, where allowed by law, excepting tax adjudicated lands, and not presently under mineral lease on August 13, 2008, situated in Bienville and Bossier Parishes, Louisiana, and more particularly described as follows: Beginning at the Northeast corner of State Lease No. 18245 and State Lease No. 18276 having Coordinates of X = 1,709,392.95 and Y = 603,474.48; thence East 8,000.00 feet to a point having Coordinates of X = 1,717,392.95 and Y = 603,474.48; thence South 13 degrees 50 minutes 16 seconds East 15,010.13 feet to a point having Coordinates of X = 1,720,982.99 and Y = 588,900.00; thence West 13,000.00 feet to a point on the East boundary of State Lease No. 17126, as amended, having Coordinates of X = 1,707,982.99 and Y = 588,900.00; thence North 03 degrees 52 minutes 11 seconds West 5,051.22 feet along the East boundary of said State Lease No. 17126 to its Northeast corner located on the South boundary of said State Lease No. 18245 and said State Lease No. 18276 having Coordinates of X = 1,707,642.10 and Y = 593,939.70; thence along the boundary of said State Lease No. 18245 and said State Lease No. 18276 the following courses: East 1,750.85 feet to a corner having Coordinates of X = 1,709,392.95 and Y = 593,939.70 and North 9,534.78 feet to the point of beginning, **LESS AND EXCEPT** any portion of the Loggy Bayou Wildlife Management Area that may lie within the above described tract, (This tract includes only waterbottoms claimed and owned by the state and specifically excludes any land which the state or Wildlife and Fisheries may claim or own and to which the mineral rights are vested in them), containing approximately **50 acres**, all as more particularly outlined on a plat on file in the Office of Mineral Resources, Department of Natural Resources. All bearings, distances and coordinates are based on Louisiana Coordinate System of 1927, (North or South Zone), where applicable.

NOTE: The above description of the Tract nominated for lease has been provided and corrected, where required, exclusively by the nomination party. Any mineral lease selected from this Tract and awarded by the Louisiana State Mineral Board shall be without warranty of any kind, either express, implied, or statutory, including, but not limited to, the implied warranties of merchantability and fitness for a particular purpose. Should the mineral lease awarded by the Louisiana State Mineral Board be subsequently modified, cancelled or abrogated due to the existence of conflicting leases, operating agreements, private claims or other future obligations or conditions which may affect all or any portion of the leased Tract, it shall not relieve the Lessee of the obligation to pay any bonus due thereon to the Louisiana State Mineral Board, nor shall the Louisiana State Mineral Board be obligated to refund any consideration paid by the Lessor prior to such modification, cancellation, or abrogation, including, but not limited to, bonuses, rentals and royalties.

Applicant: THEOPHILUS OIL, GAS & LAND SERVICES, LLC

Bidder	Cash Payment	Price/Acre	Rental	Oil	Gas	Other



**Legend**

- ▬ 08080029
- ▬ Wildlife
- ▬ Active\_Leases
- ▬ Counties

**DOQQ2004**

BIENVILLE PARISH  
T16N - R10W

LOGGY BAYOU

P.O.B.



BOSSIER PARISH

LOGGY BAYOU WMA

SL 18276

T15N - R11W

SL 18245

SL 17126



**TRACT 40025 - Bossier and Caddo Parishes, Louisiana**

All of the lands now or formerly constituting the beds and bottoms of all water bodies of every nature and description as to which title is vested in the State of Louisiana, together with all islands arising therein and other lands formed by accretion or by reliction, where allowed by law, excepting tax adjudicated lands, and not presently under mineral lease on August 13, 2008, situated in Bossier and Caddo Parishes, Louisiana, and more particularly described as follows: Beginning at the Easternmost Northeast corner of State Lease No. 19123, said point located on the South boundary of State Lease No. 17732 having Coordinates of X = 1,677,916.31 and Y = 598,434.05; thence East 15,194.61 feet along the South boundary of said State Lease No. 17732 to a point having Coordinates of X = 1,693,110.92 and Y = 598,434.05; thence South 9,534.05 feet to a point having Coordinates of X = 1,693,110.92 and Y = 588,900.00; thence West 10,050.27 feet to a point on the East boundary of State Lease No. 18394, as amended, having Coordinates of X = 1,683,060.65 and Y = 588,900.00; thence along the boundary of said State Lease No. 18394 the following courses: North 00 degrees 43 minutes 09 seconds East 5,089.05 feet to a corner having Coordinates of X = 1,683,124.53 and Y = 593,988.65 and North 89 degrees 18 minutes 37 seconds West 5,269.34 feet to a point on the East boundary of said State Lease No. 19123 having Coordinates of X = 1,677,855.57 and Y = 594,052.08; thence North 00 degrees 47 minutes 39 seconds East 4,382.39 feet along the East boundary of said State Lease No. 19123 to the point of beginning, containing approximately **192 acres**, all as more particularly outlined on a plat on file in the Office of Mineral Resources, Department of Natural Resources. All bearings, distances and coordinates are based on Louisiana Coordinate System of 1927, (North or South Zone), where applicable.

NOTE: The above description of the Tract nominated for lease has been provided and corrected, where required, exclusively by the nomination party. Any mineral lease selected from this Tract and awarded by the Louisiana State Mineral Board shall be without warranty of any kind, either express, implied, or statutory, including, but not limited to, the implied warranties of merchantability and fitness for a particular purpose. Should the mineral lease awarded by the Louisiana State Mineral Board be subsequently modified, cancelled or abrogated due to the existence of conflicting leases, operating agreements, private claims or other future obligations or conditions which may affect all or any portion of the leased Tract, it shall not relieve the Lessee of the obligation to pay any bonus due thereon to the Louisiana State Mineral Board, nor shall the Louisiana State Mineral Board be obligated to refund any consideration paid by the Lessor prior to such modification, cancellation, or abrogation, including, but not limited to, bonuses, rentals and royalties.

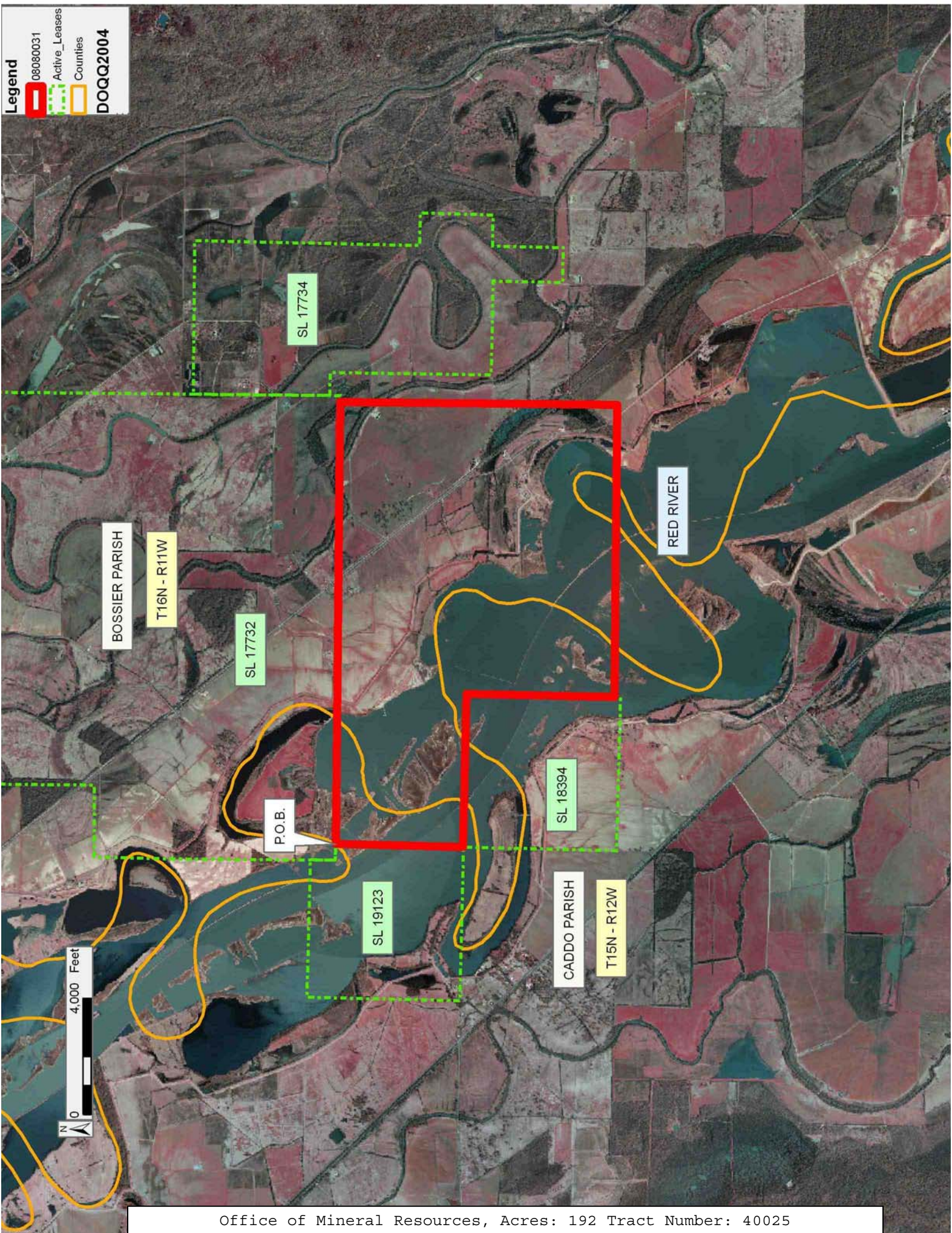
Applicant: THEOPHILUS OIL, GAS & LAND SERVICES, LLC

Bidder	Cash Payment	Price/Acre	Rental	Oil	Gas	Other



**Legend**

- 08080031
- Active\_Leases
- Counties
- DOQQ2004





**TRACT 40026 - Bienville and Bossier Parishes, Louisiana**

All of the lands now or formerly constituting the beds and bottoms of all water bodies of every nature and description as to which title is vested in the State of Louisiana, together with all islands arising therein and other lands formed by accretion or by reliction, where allowed by law, excepting tax adjudicated lands, and not presently under mineral lease on August 13, 2008, situated in Bienville and Bossier Parishes, Louisiana, and more particularly described as follows: Beginning at a point on the East boundary of State Lease No. 17126, as amended, having Coordinates of X = 1,707,982.99 and Y = 588,900.00; thence East 17,277.01 feet to a point having Coordinates of X = 1,725,260.00 and Y = 588,900.00; thence South 16,100.00 feet to a point having Coordinates of X = 1,725,260.00 and Y = 572,800.00; thence West 16,302.79 feet to a point having Coordinates of X = 1,708,957.21 and Y = 572,800.00; thence North 9,780.61 feet to the Southeast corner of said State Lease No. 17126 having Coordinates of X = 1,708,957.21 and Y = 582,580.61; thence along the boundary of said State Lease No. 17126 the following courses: North 00 degrees 46 minutes 15 seconds East 3,020.34 feet to a corner having Coordinates of X = 1,708,997.84 and Y = 585,600.68; South 89 degrees 19 minutes 14 seconds West 791.10 feet to a corner having Coordinates of X = 1,708,206.80 and Y = 585,591.30 and North 03 degrees 52 minutes 11 seconds West 3,316.26 feet to the point of beginning, **LESS AND EXCEPT** any portion of the Loggy Bayou Wildlife Management Area that may lie within the above described tract, (This tract includes only waterbottoms claimed and owned by the state and specifically excludes any land which the state or Wildlife and Fisheries may claim or own and to which the mineral rights are vested in them), containing approximately **105 acres**, all as more particularly outlined on a plat on file in the Office of Mineral Resources, Department of Natural Resources. All bearings, distances and coordinates are based on Louisiana Coordinate System of 1927, (North or South Zone), where applicable.

NOTE: The above description of the Tract nominated for lease has been provided and corrected, where required, exclusively by the nomination party. Any mineral lease selected from this Tract and awarded by the Louisiana State Mineral Board shall be without warranty of any kind, either express, implied, or statutory, including, but not limited to, the implied warranties of merchantability and fitness for a particular purpose. Should the mineral lease awarded by the Louisiana State Mineral Board be subsequently modified, cancelled or abrogated due to the existence of conflicting leases, operating agreements, private claims or other future obligations or conditions which may affect all or any portion of the leased Tract, it shall not relieve the Lessee of the obligation to pay any bonus due thereon to the Louisiana State Mineral Board, nor shall the Louisiana State Mineral Board be obligated to refund any consideration paid by the Lessor prior to such modification, cancellation, or abrogation, including, but not limited to, bonuses, rentals and royalties.



Applicant: THEOPHILUS OIL, GAS & LAND SERVICES, LLC

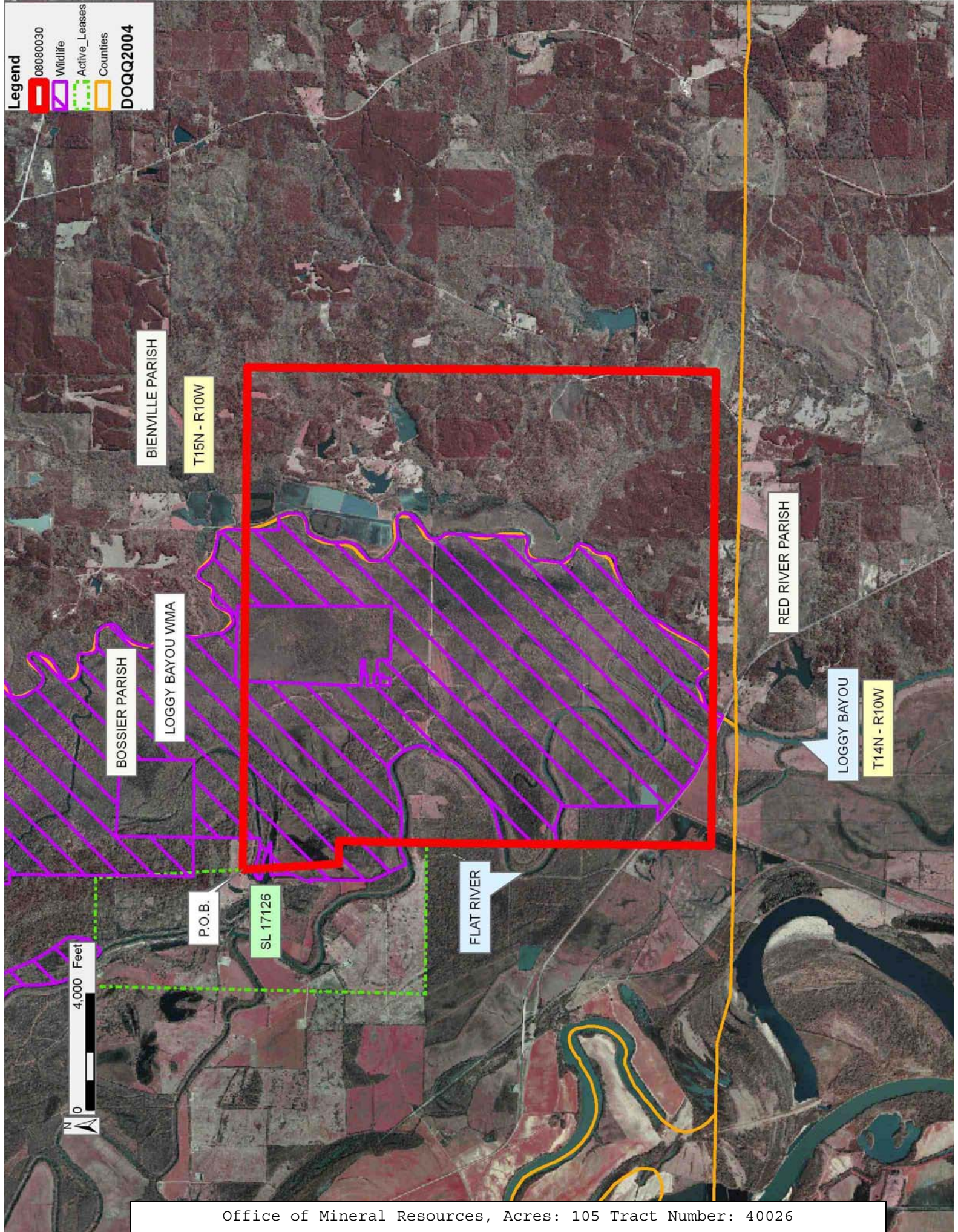
Bidder	Cash Payment	Price/Acre	Rental	Oil	Gas	Other



**Legend**

- ▭ 08080030
- ▭ Wildlife
- ▭ Active\_Leases
- ▭ Counties

**DOQQ2004**



BIENVILLE PARISH

T15N - R10W

BOSSIER PARISH

LOGGY BAYOU WMA

RED RIVER PARISH

LOGGY BAYOU

T14N - R10W

FLAT RIVER

P.O.B.

SL 17126





**TRACT 40027 - Bossier Caddo and Red River Parishes, Louisiana**

All of the lands now or formerly constituting the beds and bottoms of all water bodies of every nature and description as to which title is vested in the State of Louisiana, together with all islands arising therein and other lands formed by accretion or by reliction, where allowed by law, excepting tax adjudicated lands, and not presently under mineral lease on August 13, 2008, situated in Bossier Caddo and Red River Parishes, Louisiana, and more particularly described as follows: Beginning at the Southwest corner of State Lease No. 18394, as amended, also being the Northeast corner of State Lease No. 17947, as amended, having Coordinates of X = 1,677,778.77 and Y = 588,778.42; thence along the boundary of said State Lease No. 18394 the following courses: South 89 degrees 00 minutes 11 seconds East 5,280.00 feet to its Southeast corner having Coordinates of X = 1,683,057.97 and Y = 588,686.55 and North 00 degrees 43 minutes 09 seconds East 213.47 feet to a point having Coordinates of X = 1,683,060.65 and Y = 588,900.00; thence East 10,050.27 feet to a point having Coordinates of X = 1,693,110.92 and Y = 588,900.00; thence South 6,226.87 feet to the Easternmost Northeast corner of State Lease No. 17124, as amended, having Coordinates of X = 1,693,110.92 and Y = 582,673.13; thence along the boundary of said State Lease No. 17124 the following courses: North 34 degrees 29 minutes 28 seconds West 828.15 feet to a point having Coordinates of X = 1,692,641.96 and Y = 583,355.70; West 3,121.27 feet to a point having Coordinates of X = 1,689,520.69 and Y = 583,355.70; South 37 degrees 23 minutes 24 seconds East 5,232.72 feet to a point having Coordinates of X = 1,692,698.20 and Y = 579,198.20; South 01 degrees 01 minutes 00 seconds East 1,122.68 feet to a point having Coordinates of X = 1,692,718.12 and Y = 578,075.70 and East 362.62 feet to its Southeast corner having Coordinates of X = 1,693,080.74 and Y = 578,075.70; thence South 5,275.70 feet to a point having Coordinates of X = 1,693,080.74 and Y = 572,800.00; thence West 10,273.74 feet to the Northeast corner of State Lease No. 19460 having Coordinates of X = 1,682,807.00 and Y = 572,800.00; thence West approximately 5,206 feet along the North boundary of said State Lease No. 19460 to its Northwest corner, also being the Northeast corner of State Lease No. 17948, as amended, having a Coordinate of Y = 572,800.00; thence Northwesterly approximately 138 feet to the Southeast corner of said State Lease No. 17947 having Coordinates of X = 1,677,564.25 and Y = 572,933.59; thence along the East boundary of said State Lease No. 17947 the following courses: North 00 degrees 37 minutes 28 seconds East 13,213.39 feet to a corner having Coordinates of X = 1,677,708.25 and Y = 586,146.19 and North 01 degrees 32 minutes 06 seconds East 2,633.17 feet to the point of beginning, containing approximately **138 acres**, all as more particularly outlined on a plat on file in the Office of Mineral Resources, Department of Natural Resources. All bearings, distances and coordinates are based on Louisiana Coordinate System of 1927, (North or South Zone), where applicable.

NOTE: The above description of the Tract nominated for lease has been provided and corrected, where required, exclusively by the nomination party. Any mineral lease selected from this Tract and awarded by the

Louisiana State Mineral Board shall be without warranty of any kind, either express, implied, or statutory, including, but not limited to, the implied warranties of merchantability and fitness for a particular purpose. Should the mineral lease awarded by the Louisiana State Mineral Board be subsequently modified, cancelled or abrogated due to the existence of conflicting leases, operating agreements, private claims or other future obligations or conditions which may affect all or any portion of the leased Tract, it shall not relieve the Lessee of the obligation to pay any bonus due thereon to the Louisiana State Mineral Board, nor shall the Louisiana State Mineral Board be obligated to refund any consideration paid by the Lessor prior to such modification, cancellation, or abrogation, including, but not limited to, bonuses, rentals and royalties.

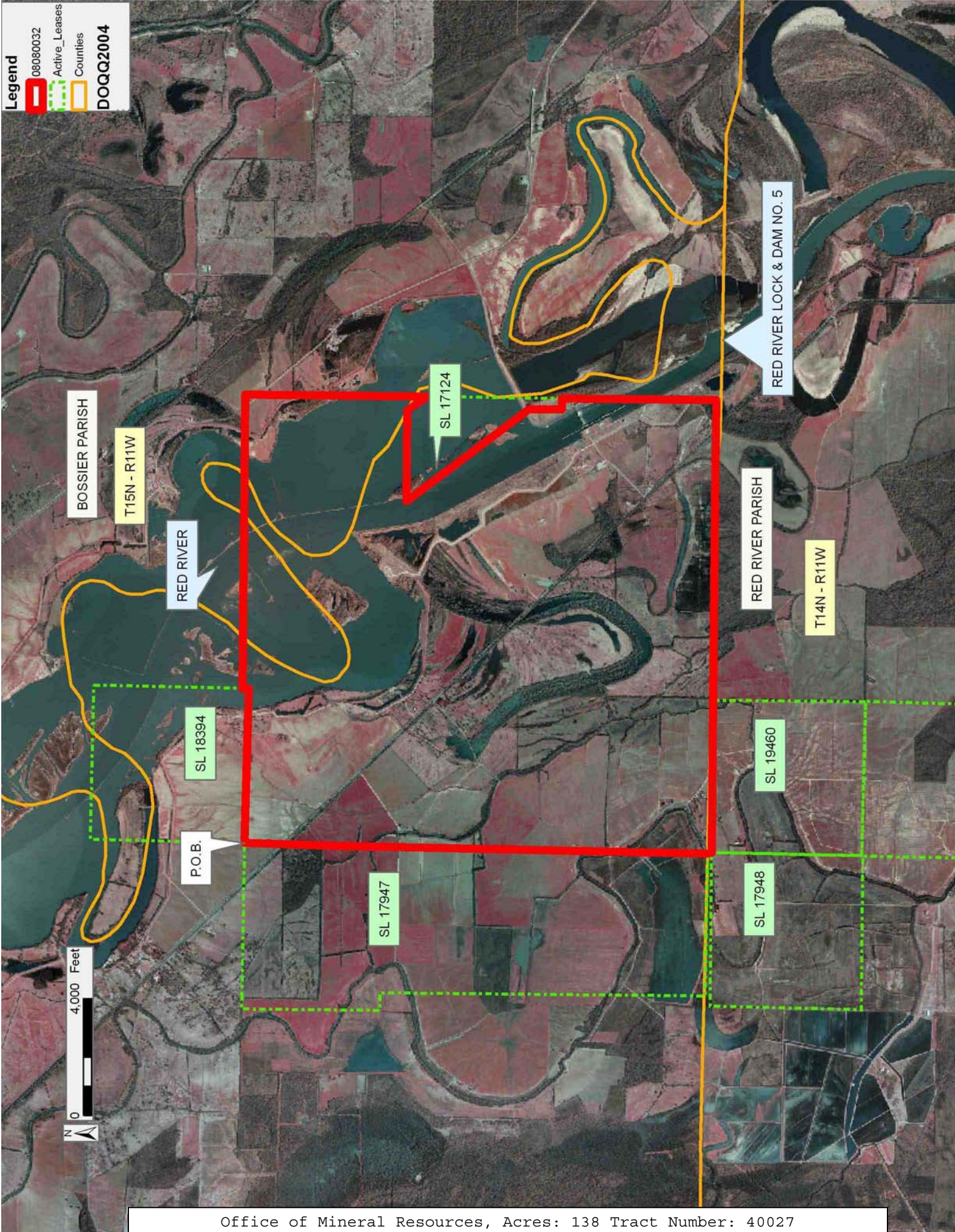
Applicant: THEOPHILUS OIL, GAS & LAND SERVICES, LLC

Bidder	Cash Payment	Price/Acre	Rental	Oil	Gas	Other



**Legend**

- 08080032
- Active\_Leases
- Counties
- DOQQ2004





**TRACT 40028 - Bossier and Caddo Parishes, Louisiana**

All of the lands now or formerly constituting the beds and bottoms of all water bodies of every nature and description as to which title is vested in the State of Louisiana, together with all islands arising therein and other lands formed by accretion or by reliction, where allowed by law, excepting tax adjudicated lands, and not presently under mineral lease on August 13, 2008, situated in Bossier and Caddo Parishes, Louisiana, and more particularly described as follows: Beginning at a point having Coordinates of X = 1,693,110.92 and Y = 587,882.74; thence Easterly approximately 5,368 feet to the Southwest corner of State Lease No. 16397, as amended; thence Easterly approximately 5,200 feet along the South boundary of said State Lease No. 16397 to its Southeast corner; thence Easterly approximately 160 feet to a point on the West boundary of State Lease No. 17126, as amended, having Coordinates of X = 1,703,842.94 and Y = 587,882.74; thence along the boundary of said State Lease No. 17126 the following courses: South 00 degrees 47 minutes 02 seconds West 5,311.35 feet to a corner having Coordinates of X = 1,703,770.28 and Y = 582,571.89 and North 89 degrees 54 minutes 13 seconds East 5,186.94 feet to its Southeast corner having Coordinates of X = 1,708,957.21 and Y = 582,580.61; thence South 9,780.61 feet to a point having Coordinates of X = 1,708,957.21 and Y = 572,800.00; thence West 15,876.47 feet to a point having Coordinates of X = 1,693,080.74 and Y = 572,800.00; thence North 5,275.70 feet to the Southeast corner of State Lease No. 17124, as amended, having Coordinates of X = 1,693,080.74 and Y = 578,075.70; thence North 00 degrees 22 minutes 34 seconds East 4,597.53 feet along the East boundary of said State Lease No. 17124 to its Easternmost Northeast corner having Coordinates of X = 1,693,110.92 and Y = 582,673.13; thence North 5,209.61 feet to the point of beginning, **LESS AND EXCEPT** all of State Lease No. 17127, as amended, that lies within the above described tract, being more fully described as follows: Commencing at the point of beginning of the above described tract having Coordinates of X = 1,693,110.92 and Y = 587,882.74; thence South 35 degrees 19 minutes 37 seconds East 9,106.62 feet to the Northwest corner of said State Lease No. 17127 having Coordinates of X = 1,698,376.73 and Y = 580,452.95; thence along the boundary of said State Lease No. 17127 the following courses: North 89 degrees 50 minutes 06 seconds East 5,280.16 feet to a corner having Coordinates of X = 1,703,656.87 and Y = 580,468.16; South 00 degrees 22 minutes 36 seconds West 3,178.70 feet to a corner having Coordinates of X = 1,703,635.98 and Y = 577,289.53; North 89 degrees 19 minutes 38 seconds West 5,280.00 feet to a point having Coordinates of X = 1,698,356.34 and Y = 577,351.53 and North 00 degrees 22 minutes 36 seconds East 3,101.49 feet back to its Northwest corner, **ALSO LESS AND EXCEPT** that portion, if any, of State Lease No. 16397, as amended, that may lie within the above described tract, **ALSO LESS AND EXCEPT** that portion, if any, of the above described tract that lies within the Loggy Bayou Wildlife Management Area; the above described tract containing approximately **401 acres**, all as more particularly outlined on a plat on file in the Office of Mineral Resources, Department of Natural Resources. All bearings,



distances and coordinates are based on Louisiana Coordinate System of 1927, (North or South Zone), where applicable.

NOTE: The above description of the Tract nominated for lease has been provided and corrected, where required, exclusively by the nomination party. Any mineral lease selected from this Tract and awarded by the Louisiana State Mineral Board shall be without warranty of any kind, either express, implied, or statutory, including, but not limited to, the implied warranties of merchantability and fitness for a particular purpose. Should the mineral lease awarded by the Louisiana State Mineral Board be subsequently modified, cancelled or abrogated due to the existence of conflicting leases, operating agreements, private claims or other future obligations or conditions which may affect all or any portion of the leased Tract, it shall not relieve the Lessee of the obligation to pay any bonus due thereon to the Louisiana State Mineral Board, nor shall the Louisiana State Mineral Board be obligated to refund any consideration paid by the Lessor prior to such modification, cancellation, or abrogation, including, but not limited to, bonuses, rentals and royalties.

Applicant: THEOPHILUS OIL, GAS & LAND SERVICES, LLC

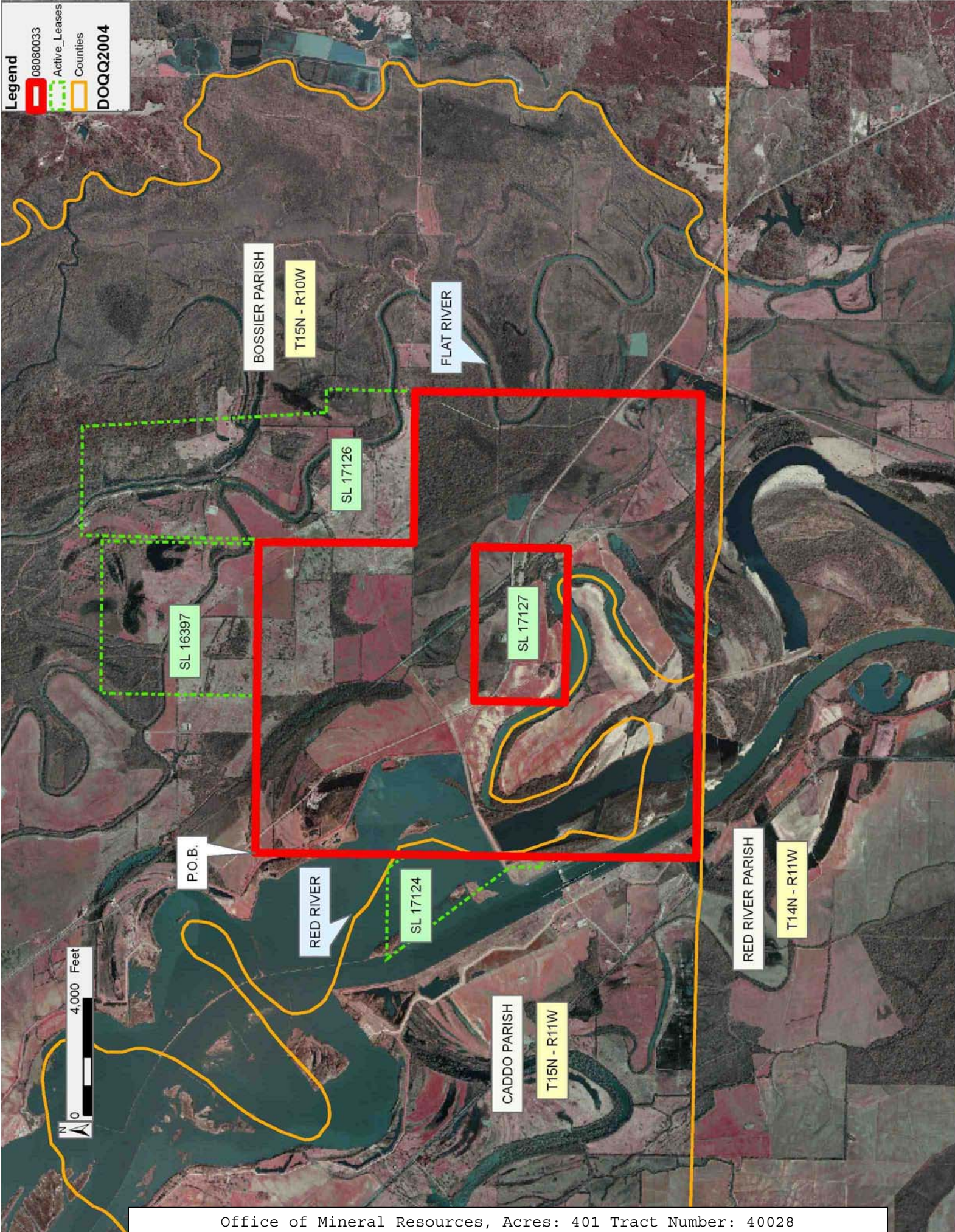
Bidder	Cash Payment	Price/Acre	Rental	Oil	Gas	Other



**Legend**

- ▬ 08080033
- ▬ Active\_Leases
- ▬ Counties

**DOQQ2004**





**TRACT 40029 - Bossier Caddo and Red River Parishes, Louisiana**

All of the lands now or formerly constituting the beds and bottoms of all water bodies of every nature and description as to which title is vested in the State of Louisiana, together with all islands arising therein and other lands formed by accretion or by reliction, where allowed by law, excepting tax adjudicated lands, and not presently under mineral lease on August 13, 2008, situated in Bossier Caddo and Red River Parishes, Louisiana, and more particularly described as follows: Beginning at a point having Coordinates of X = 1,693,080.74 and Y = 572,800.00; thence East 15,876.47 feet to a point having Coordinates of X = 1,708,957.21 and Y = 572,800.00; thence South 15,806.00 feet to a point having Coordinates of X = 1,708,957.21 and Y = 556,994.00; thence West 10,431.21 feet to the Northeast corner of State Lease No. 19124 having Coordinates of X = 1,698,526.00 and Y = 556,994.00; thence West 5,445.26 feet along the North boundary of said State Lease No. 19124 to a point having Coordinates of X = 1,693,080.74 and Y = 556,994.00; thence North 15,806.00 feet to the point of beginning, (This tract includes only waterbottoms claimed and owned by the state and specifically excludes any land which the state may claim or own and to which the mineral rights are vested in the state), containing approximately **549 acres**, all as more particularly outlined on a plat on file in the Office of Mineral Resources, Department of Natural Resources. All bearings, distances and coordinates are based on Louisiana Coordinate System of 1927, (North or South Zone), where applicable.

NOTE: The above description of the Tract nominated for lease has been provided and corrected, where required, exclusively by the nomination party. Any mineral lease selected from this Tract and awarded by the Louisiana State Mineral Board shall be without warranty of any kind, either express, implied, or statutory, including, but not limited to, the implied warranties of merchantability and fitness for a particular purpose. Should the mineral lease awarded by the Louisiana State Mineral Board be subsequently modified, cancelled or abrogated due to the existence of conflicting leases, operating agreements, private claims or other future obligations or conditions which may affect all or any portion of the leased Tract, it shall not relieve the Lessee of the obligation to pay any bonus due thereon to the Louisiana State Mineral Board, nor shall the Louisiana State Mineral Board be obligated to refund any consideration paid by the Lessor prior to such modification, cancellation, or abrogation, including, but not limited to, bonuses, rentals and royalties.



Applicant: THEOPHILUS OIL, GAS & LAND SERVICES, LLC

Bidder	Cash Payment	Price/Acre	Rental	Oil	Gas	Other



**Legend**

- 08080035
- Active\_Leases
- Counties
- DOQQ2004

