

TRACT 40010 - Caddo Parish, Louisiana

All of the lands now or formerly constituting the beds and bottoms of all water bodies of every nature and description as to which title is vested in the State of Louisiana, together with all islands arising therein and other lands formed by accretion or by reliction, where allowed by law, excepting tax adjudicated lands, and not presently under mineral lease on August 13, 2008, situated in Caddo Parish, Louisiana, and more particularly described as follows: Beginning at the Southeast corner of State Lease No. 19691 having Coordinates of X = 1,568,552.53 and Y = 669,844.16; thence South 16,125.14 feet to a point having Coordinates of X = 1,568,552.53 and Y = 653,719.02; thence West 15,848.13 feet to a point having Coordinates of X = 1,552,704.40 and Y = 653,719.02; thence Northerly approximately 11,072 feet to the Southwest corner of State Lease No. 9076; thence along the boundary of said State Lease No. 9076 the following courses: thence Easterly approximately 5,334 feet to its Southeast corner and Northerly approximately 5,259 feet to its Northeast corner, also being the Southwest corner of State Lease No. 19690; thence Easterly approximately 5,230 feet along the South boundary of said State Lease No. 19690 to its Southeast corner, also being the Southwest corner of said State Lease No. 19691 having Coordinates of X = 1,563,331.74 and Y = 669,851.63; thence South 89 degrees 55 minutes 05 seconds East 5,220.80 feet along the South boundary of said State Lease No. 19691 to the point of beginning, **LESS AND EXCEPT** that portion, if any of State Lease No. 9076 and State Lease No. 19690 that may lie within the above described tract, containing approximately **65 acres**, all as more particularly outlined on a plat on file in the Office of Mineral Resources, Department of Natural Resources. All bearings, distances and coordinates are based on Louisiana Coordinate System of 1927, (North or South Zone), where applicable.

NOTE: The above description of the Tract nominated for lease has been provided and corrected, where required, exclusively by the nomination party. Any mineral lease selected from this Tract and awarded by the Louisiana State Mineral Board shall be without warranty of any kind, either express, implied, or statutory, including, but not limited to, the implied warranties of merchantability and fitness for a particular purpose. Should the mineral lease awarded by the Louisiana State Mineral Board be subsequently modified, cancelled or abrogated due to the existence of conflicting leases, operating agreements, private claims or other future obligations or conditions which may affect all or any portion of the leased Tract, it shall not relieve the Lessee of the obligation to pay any bonus due thereon to the Louisiana State Mineral Board, nor shall the Louisiana State Mineral Board be obligated to refund any consideration paid by the Lessor prior to such modification, cancellation, or abrogation, including, but not limited to, bonuses, rentals and royalties.

NOTE: Lessee agrees not to erect any derrick, tank, warehouse or other equipment or structure on the leased premises nor shall Lessee interfere, in any manner, with Lessor's use of the property. Lessee shall have, however, the complete right to drill for, produce, extract and recover the minerals in and beneath said land by drilling or other operations

conducted from the surface of other lands or by the pooling or unitization of the leased premises with other land, lease or leases in the area.

Applicant: THEOPHILUS OIL, GAS & LAND SERVICES, LLC

Bidder	Cash Payment	Price/ Acre	Rental	Oil	Gas	Other

Legend

08080048
Active_Leases
DOQQ2004



TRACT 40011 - Caddo Parish, Louisiana

All of the lands now or formerly constituting the beds and bottoms of all water bodies of every nature and description as to which title is vested in the State of Louisiana, together with all islands arising therein and other lands formed by accretion or by reliction, where allowed by law, excepting tax adjudicated lands, and not presently under mineral lease on August 13, 2008, situated in Caddo Parish, Louisiana, and more particularly described as follows: Beginning at the Southeast corner of State Lease No. 19691 having Coordinates of 1,568,552.53 and Y = 669,844.16; thence South 88 degrees 57 minutes 22 seconds East 15,649.97 feet to a point having Coordinates of X = 1,584,199.90 and Y = 669,559.02; thence South 15,840.00 feet to a point having Coordinates of X = 1,584,199.90 and Y = 653,719.02; thence West 15,647.37 feet to a point having Coordinates of X = 1,568,552.53 and Y = 653,719.02; thence North 16,125.14 feet to the point of beginning, containing approximately **266 acres**, all as more particularly outlined on a plat on file in the Office of Mineral Resources, Department of Natural Resources. All bearings, distances and coordinates are based on Louisiana Coordinate System of 1927, (North or South Zone), where applicable.

NOTE: The above description of the Tract nominated for lease has been provided and corrected, where required, exclusively by the nomination party. Any mineral lease selected from this Tract and awarded by the Louisiana State Mineral Board shall be without warranty of any kind, either express, implied, or statutory, including, but not limited to, the implied warranties of merchantability and fitness for a particular purpose. Should the mineral lease awarded by the Louisiana State Mineral Board be subsequently modified, cancelled or abrogated due to the existence of conflicting leases, operating agreements, private claims or other future obligations or conditions which may affect all or any portion of the leased Tract, it shall not relieve the Lessee of the obligation to pay any bonus due thereon to the Louisiana State Mineral Board, nor shall the Louisiana State Mineral Board be obligated to refund any consideration paid by the Lessor prior to such modification, cancellation, or abrogation, including, but not limited to, bonuses, rentals and royalties.

NOTE: Lessee agrees not to erect any derrick, tank, warehouse or other equipment or structure on the leased premises nor shall Lessee interfere, in any manner, with Lessor's use of the property. Lessee shall have, however, the complete right to drill for, produce, extract and recover the minerals in and beneath said land by drilling or other operations conducted from the surface of other lands or by the pooling or unitization of the leased premises with other land, lease or leases in the area.

Applicant: THEOPHILUS OIL, GAS & LAND SERVICES, LLC

Bidder	Cash Payment	Price/ Acre	Rental	Oil	Gas	Other

Legend
08080049
DOQQ2004

CADDO PARISH

CROSS LAKE

T18N - R14W

P.O.B.

0 4,000 Feet

T17N - R15W

TRACT 40012 - Caddo Parish, Louisiana

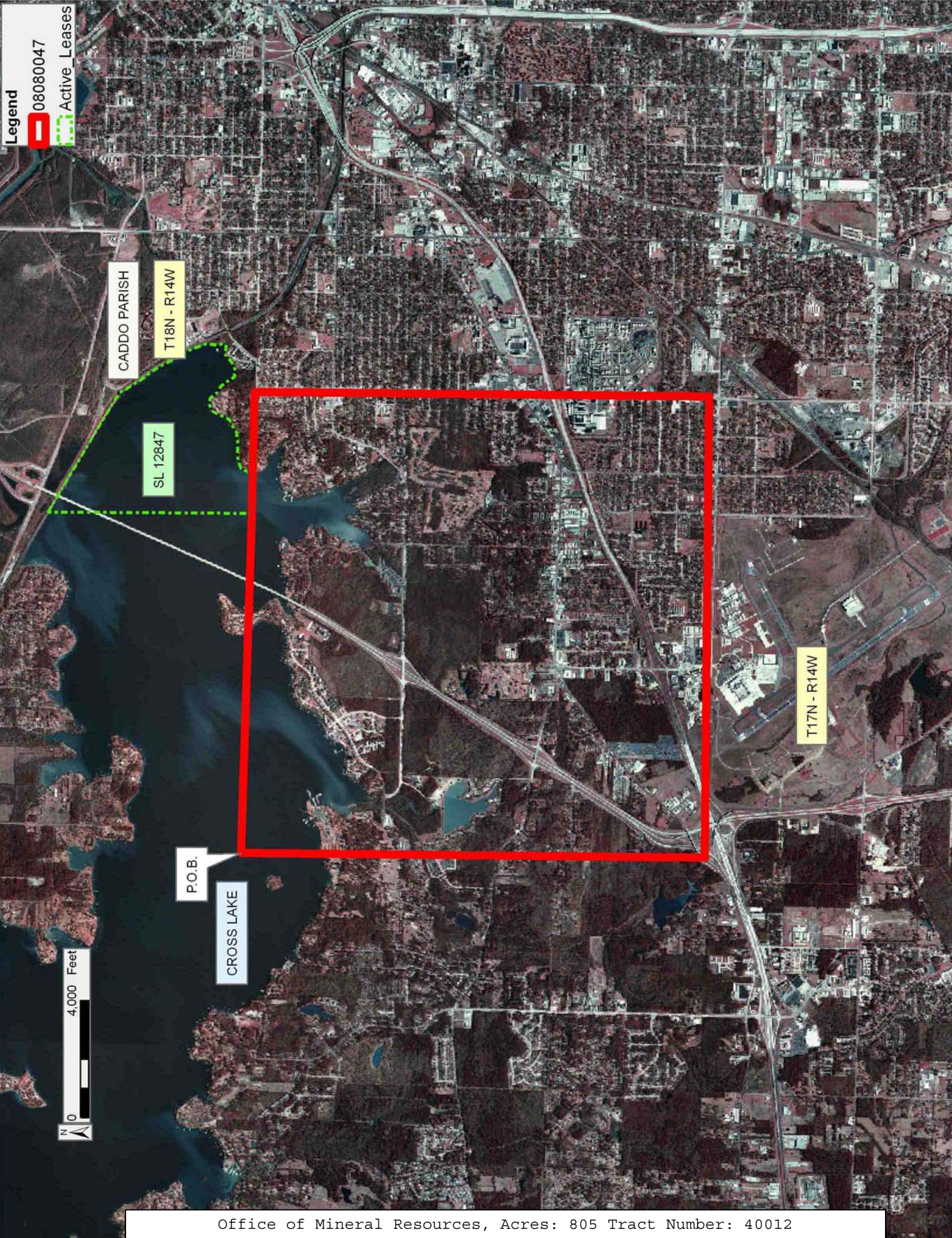
All of the lands now or formerly constituting the beds and bottoms of all water bodies of every nature and description as to which title is vested in the State of Louisiana, together with all islands arising therein and other lands formed by accretion or by reliction, where allowed by law, excepting tax adjudicated lands, and not presently under mineral lease on August 13, 2008, situated in Caddo Parish, Louisiana, and more particularly described as follows: Beginning at a point having Coordinates of X = 1,584,199.90 and Y = 669,559.02; thence Easterly approximately 11,600 feet to the Southwest corner of State Lease No. 12847; thence Easterly along the Southern boundary of said State Lease No. 12847 approximately 1,415 feet to its Southernmost Southeast corner; thence Easterly approximately 2,733 feet to a point having Coordinates of X = 1,599,947.40 and Y = 669,247.93; thence South 15,528.91 feet to a point having Coordinates of X = 1,599,947.40 and Y = 653,719.02; thence West 15,747.50 feet to a point having Coordinates of X = 1,584,199.90 and Y = 653,719.02; thence North 15,840.00 feet to the point of beginning, **LESS AND EXCEPT** that portion, if any, of State Lease No. 12847 that may lie within the above described tract, containing approximately **805 acres**, all as more particularly outlined on a plat on file in the Office of Mineral Resources, Department of Natural Resources. All bearings, distances and coordinates are based on Louisiana Coordinate System of 1927, (North or South Zone), where applicable.

NOTE: The above description of the Tract nominated for lease has been provided and corrected, where required, exclusively by the nomination party. Any mineral lease selected from this Tract and awarded by the Louisiana State Mineral Board shall be without warranty of any kind, either express, implied, or statutory, including, but not limited to, the implied warranties of merchantability and fitness for a particular purpose. Should the mineral lease awarded by the Louisiana State Mineral Board be subsequently modified, cancelled or abrogated due to the existence of conflicting leases, operating agreements, private claims or other future obligations or conditions which may affect all or any portion of the leased Tract, it shall not relieve the Lessee of the obligation to pay any bonus due thereon to the Louisiana State Mineral Board, nor shall the Louisiana State Mineral Board be obligated to refund any consideration paid by the Lessor prior to such modification, cancellation, or abrogation, including, but not limited to, bonuses, rentals and royalties.

NOTE: Lessee agrees not to erect any derrick, tank, warehouse or other equipment or structure on the leased premises nor shall Lessee interfere, in any manner, with Lessor's use of the property. Lessee shall have, however, the complete right to drill for, produce, extract and recover the minerals in and beneath said land by drilling or other operations conducted from the surface of other lands or by the pooling or unitization of the leased premises with other land, lease or leases in the area.

Applicant: THEOPHILUS OIL, GAS & LAND SERVICES, LLC

Bidder	Cash Payment	Price/ Acre	Rental	Oil	Gas	Other



Legend

08080047

Active_Leases

CADDO PARISH

T18N - R14W

SL 12847

P.O.B.

CROSS LAKE

T17N - R14W

TRACT 40013 - Bossier Parish, Louisiana

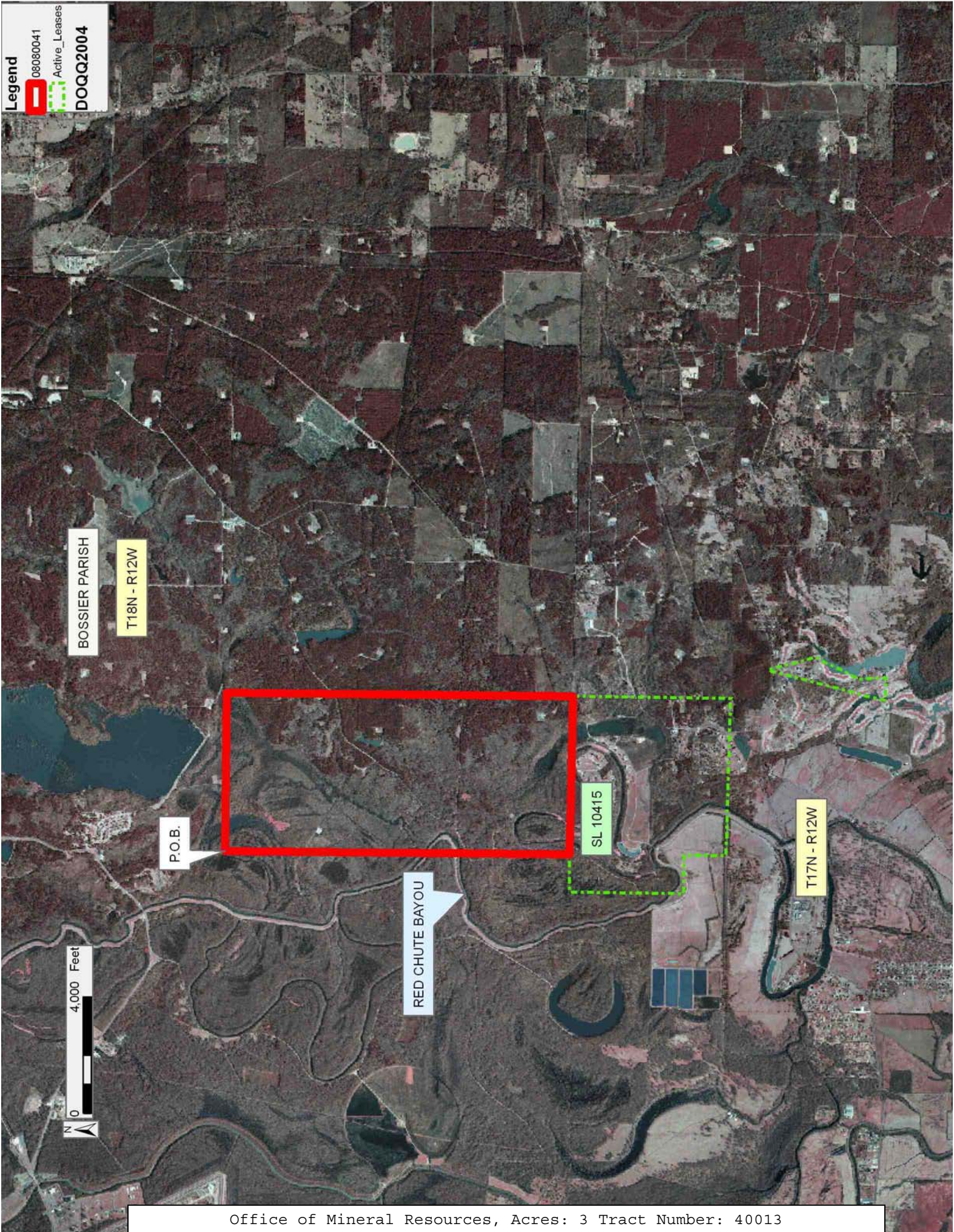
All of the lands now or formerly constituting the beds and bottoms of all water bodies of every nature and description as to which title is vested in the State of Louisiana, together with all islands arising therein and other lands formed by accretion or by reliction, where allowed by law, excepting tax adjudicated lands, and not presently under mineral lease on August 13, 2008, situated in Bossier Parish, Louisiana, and more particularly described as follows: Beginning at a point having Coordinates of X = 1,661,976.70 and Y = 668,906.70; thence East 5,427.00 feet to a point having Coordinates of X = 1,667,403.70 and Y = 668,906.70; thence Southerly approximately 11,879 feet to the Northeast corner of State Lease No. 10415, as amended; thence Westerly approximately 5,427 feet along the North boundary of said State Lease No. 10415 to a point of intersection with a North-South line having a Coordinate of X = 1,661,976.70; thence North approximately 11,816 feet along said North-South line to the point of beginning, **LESS AND EXCEPT** that portion, if any, of State Lease No. 10415, as amended, that may lie within the above described tract, containing approximately **3 acres**, all as more particularly outlined on a plat on file in the Office of Mineral Resources, Department of Natural Resources. All bearings, distances and coordinates are based on Louisiana Coordinate System of 1927, (North or South Zone), where applicable.

NOTE: The above description of the Tract nominated for lease has been provided and corrected, where required, exclusively by the nomination party. Any mineral lease selected from this Tract and awarded by the Louisiana State Mineral Board shall be without warranty of any kind, either express, implied, or statutory, including, but not limited to, the implied warranties of merchantability and fitness for a particular purpose. Should the mineral lease awarded by the Louisiana State Mineral Board be subsequently modified, cancelled or abrogated due to the existence of conflicting leases, operating agreements, private claims or other future obligations or conditions which may affect all or any portion of the leased Tract, it shall not relieve the Lessee of the obligation to pay any bonus due thereon to the Louisiana State Mineral Board, nor shall the Louisiana State Mineral Board be obligated to refund any consideration paid by the Lessor prior to such modification, cancellation, or abrogation, including, but not limited to, bonuses, rentals and royalties.

Bidder	Cash Payment	Price/ Acre	Rental	Oil	Gas	Other

Applicant: THEOPHILUS OIL, GAS & LAND SERVICES, LLC

Legend
08080041
Active_Leases
DOQQ2004



TRACT 40014 - Bossier Parish, Louisiana

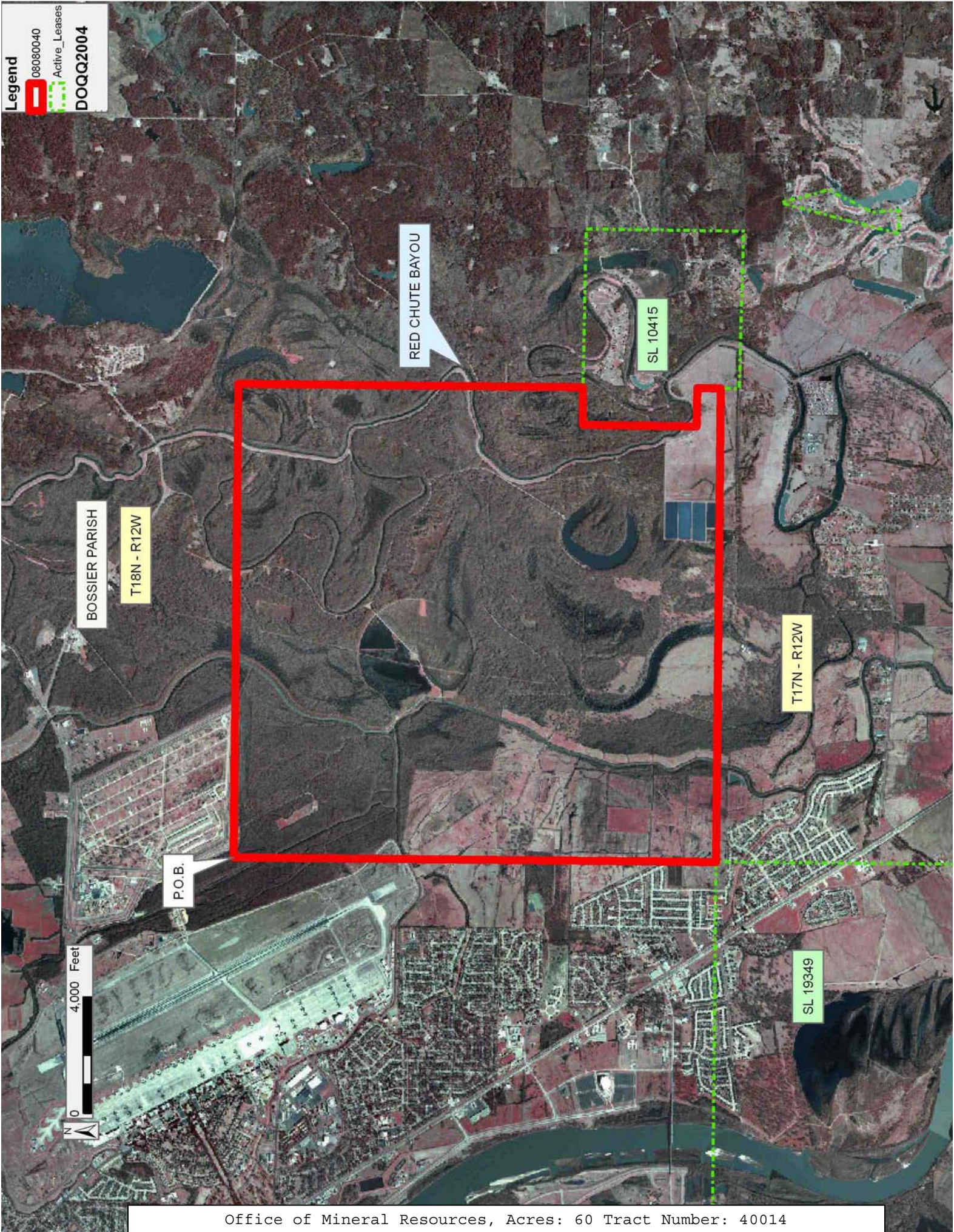
All of the lands now or formerly constituting the beds and bottoms of all water bodies of every nature and description as to which title is vested in the State of Louisiana, together with all islands arising therein and other lands formed by accretion or by reliction, where allowed by law, excepting tax adjudicated lands, and not presently under mineral lease on August 13, 2008, situated in Bossier Parish, Louisiana, and more particularly described as follows: Beginning at a point having Coordinates of X = 1,645,728.17 and Y = 668,906.70; thence East 16,248.53 feet to a point having Coordinates of X = 1,661,976.70 and Y = 668,906.70; thence South approximately 11,816 feet to a point on the North boundary of State Lease No. 10415, as amended, having a Coordinate of X = 1,661,976.70; thence along the boundary of said State Lease No. 10415 the following courses: Westerly approximately 1,297 feet; Southerly approximately 3,904 feet; Easterly approximately 1,321 feet and Southerly approximately 799 feet to a point having a Coordinate of Y = 652,364.67; thence West approximately 16,246 feet to the Northeast corner of State Lease No. 19349 having Coordinates of X = 1,645,728.17 and Y = 652,364.67; thence North 16,542.03 feet to the point of beginning, **LESS AND EXCEPT** that portion, if any, of State Lease No. 10415, as amended, that may lie within the above described tract, containing approximately **60 acres**, all as more particularly outlined on a plat on file in the Office of Mineral Resources, Department of Natural Resources. All bearings, distances and coordinates are based on Louisiana Coordinate System of 1927, (North or South Zone), where applicable.

NOTE: The above description of the Tract nominated for lease has been provided and corrected, where required, exclusively by the nomination party. Any mineral lease selected from this Tract and awarded by the Louisiana State Mineral Board shall be without warranty of any kind, either express, implied, or statutory, including, but not limited to, the implied warranties of merchantability and fitness for a particular purpose. Should the mineral lease awarded by the Louisiana State Mineral Board be subsequently modified, cancelled or abrogated due to the existence of conflicting leases, operating agreements, private claims or other future obligations or conditions which may affect all or any portion of the leased Tract, it shall not relieve the Lessee of the obligation to pay any bonus due thereon to the Louisiana State Mineral Board, nor shall the Louisiana State Mineral Board be obligated to refund any consideration paid by the Lessor prior to such modification, cancellation, or abrogation, including, but not limited to, bonuses, rentals and royalties.

Applicant: THEOPHILUS OIL, GAS & LAND SERVICES, LLC

Bidder	Cash Payment	Price/ Acre	Rental	Oil	Gas	Other

Legend
08080040
Active_Leases
DOQQ2004



TRACT 40015 - Bossier and Caddo Parishes, Louisiana

All of the lands now or formerly constituting the beds and bottoms of all water bodies of every nature and description as to which title is vested in the State of Louisiana, together with all islands arising therein and other lands formed by accretion or by reliction, where allowed by law, excepting tax adjudicated lands, and not presently under mineral lease on August 13, 2008, situated in Bossier and Caddo Parishes, Louisiana, and more particularly described as follows: Beginning at a point having Coordinates of X = 1,630,100.00 and Y = 668,906.70; thence East 15,628.17 feet to a point having Coordinates of X = 1,645,728.17 and Y = 668,906.70; thence South 16,542.03 feet to the Northeast corner of State Lease No. 19349 having Coordinates of X = 1,645,728.17 and Y = 652,364.67; thence West 15,628.17 feet along the North boundary of said State Lease No. 19349 to its Northwest corner having Coordinates of X = 1,630,100.00 and Y = 652,364.67; thence North 16,542.03 feet to the point of beginning, (This tract includes only waterbottoms claimed and owned by the state and specifically excludes any land which the state may claim or own and to which the mineral rights are vested in the state), containing approximately **470 acres**, all as more particularly outlined on a plat on file in the Office of Mineral Resources, Department of Natural Resources. All bearings, distances and coordinates are based on Louisiana Coordinate System of 1927, (North or South Zone), where applicable.

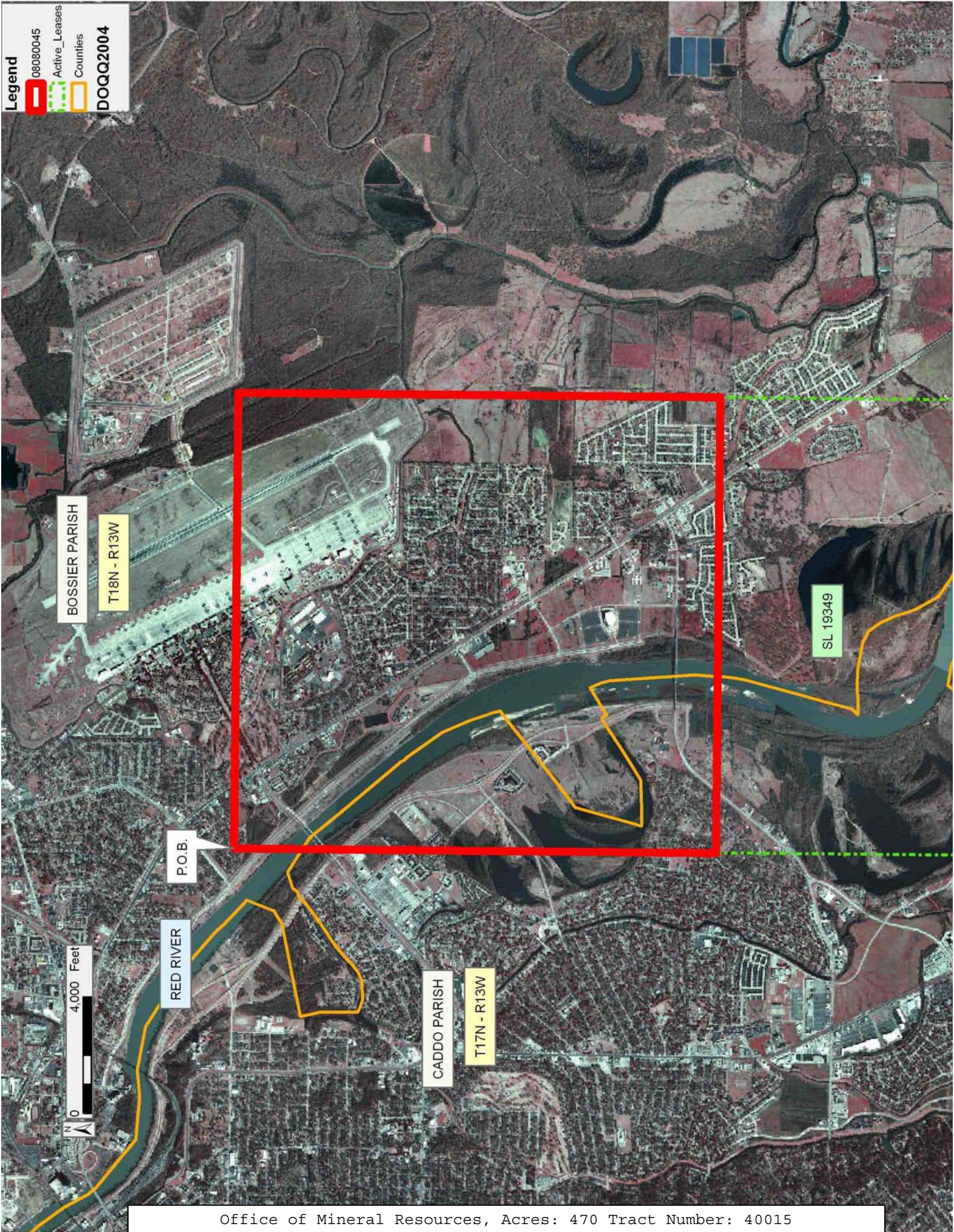
NOTE: The above description of the Tract nominated for lease has been provided and corrected, where required, exclusively by the nomination party. Any mineral lease selected from this Tract and awarded by the Louisiana State Mineral Board shall be without warranty of any kind, either express, implied, or statutory, including, but not limited to, the implied warranties of merchantability and fitness for a particular purpose. Should the mineral lease awarded by the Louisiana State Mineral Board be subsequently modified, cancelled or abrogated due to the existence of conflicting leases, operating agreements, private claims or other future obligations or conditions which may affect all or any portion of the leased Tract, it shall not relieve the Lessee of the obligation to pay any bonus due thereon to the Louisiana State Mineral Board, nor shall the Louisiana State Mineral Board be obligated to refund any consideration paid by the Lessor prior to such modification, cancellation, or abrogation, including, but not limited to, bonuses, rentals and royalties.

Applicant: THEOPHILUS OIL, GAS & LAND SERVICES, LLC

Bidder	Cash Payment	Price/ Acre	Rental	Oil	Gas	Other

Legend

- 08080045
- Active_Leases
- Counties
- DOQQ2004



TRACT 40016 - Bossier and Caddo Parishes, Louisiana

All of the lands now or formerly constituting the beds and bottoms of all water bodies of every nature and description as to which title is vested in the State of Louisiana, together with all islands arising therein and other lands formed by accretion or by reliction, where allowed by law, excepting tax adjudicated lands, and not presently under mineral lease on August 13, 2008, situated in Bossier and Caddo Parishes, Louisiana, and more particularly described as follows: Beginning at a point having Coordinates of X = 1,614,260.00 and Y = 668,906.70; thence East 15,840.00 feet to a point having Coordinates of X = 1,630,100.00 and Y = 668,906.70; thence South 16,542.03 feet to the Northwest corner of State Lease No. 19349 having Coordinates of X = 1,630,100.00 and Y = 652,364.67; thence West 15,840.00 feet to a point having Coordinates of X = 1,614,260.00 and Y = 652,364.67; thence North 16,542.03 feet to the point of beginning, (This tract includes only waterbottoms claimed and owned by the state and specifically excludes any land which the state may claim or own and to which the mineral rights are vested in the state), containing approximately **127 acres**, all as more particularly outlined on a plat on file in the Office of Mineral Resources, Department of Natural Resources. All bearings, distances and coordinates are based on Louisiana Coordinate System of 1927, (North or South Zone), where applicable.

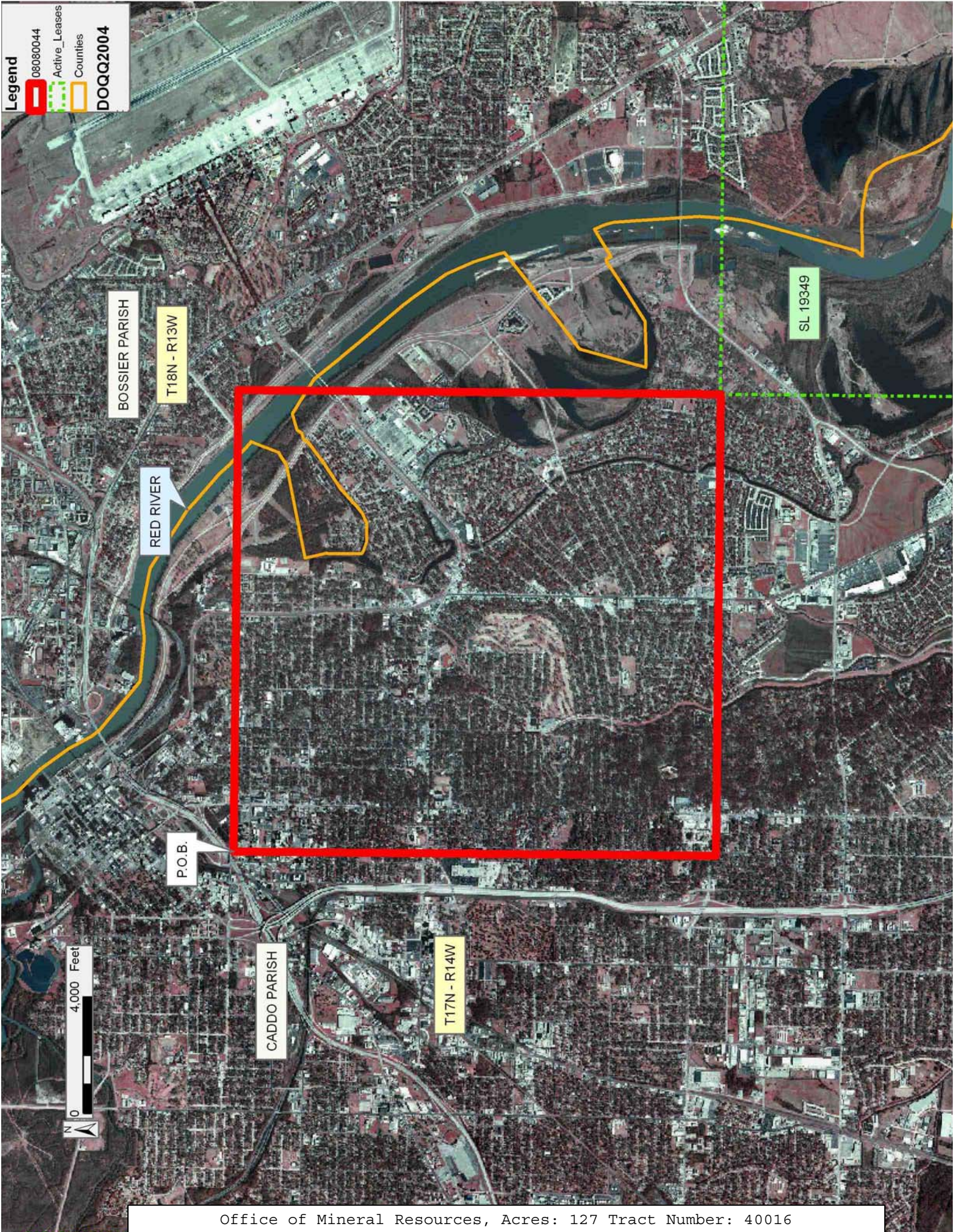
NOTE: The above description of the Tract nominated for lease has been provided and corrected, where required, exclusively by the nomination party. Any mineral lease selected from this Tract and awarded by the Louisiana State Mineral Board shall be without warranty of any kind, either express, implied, or statutory, including, but not limited to, the implied warranties of merchantability and fitness for a particular purpose. Should the mineral lease awarded by the Louisiana State Mineral Board be subsequently modified, cancelled or abrogated due to the existence of conflicting leases, operating agreements, private claims or other future obligations or conditions which may affect all or any portion of the leased Tract, it shall not relieve the Lessee of the obligation to pay any bonus due thereon to the Louisiana State Mineral Board, nor shall the Louisiana State Mineral Board be obligated to refund any consideration paid by the Lessor prior to such modification, cancellation, or abrogation, including, but not limited to, bonuses, rentals and royalties.

Bidder	Cash Payment	Price/ Acre	Rental	Oil	Gas	Other

Applicant: THEOPHILUS OIL, GAS & LAND SERVICES, LLC

Legend

- 08080044
- Active_Leases
- Counties
- DOQQ2004



TRACT 40017 - Bossier Parish, Louisiana

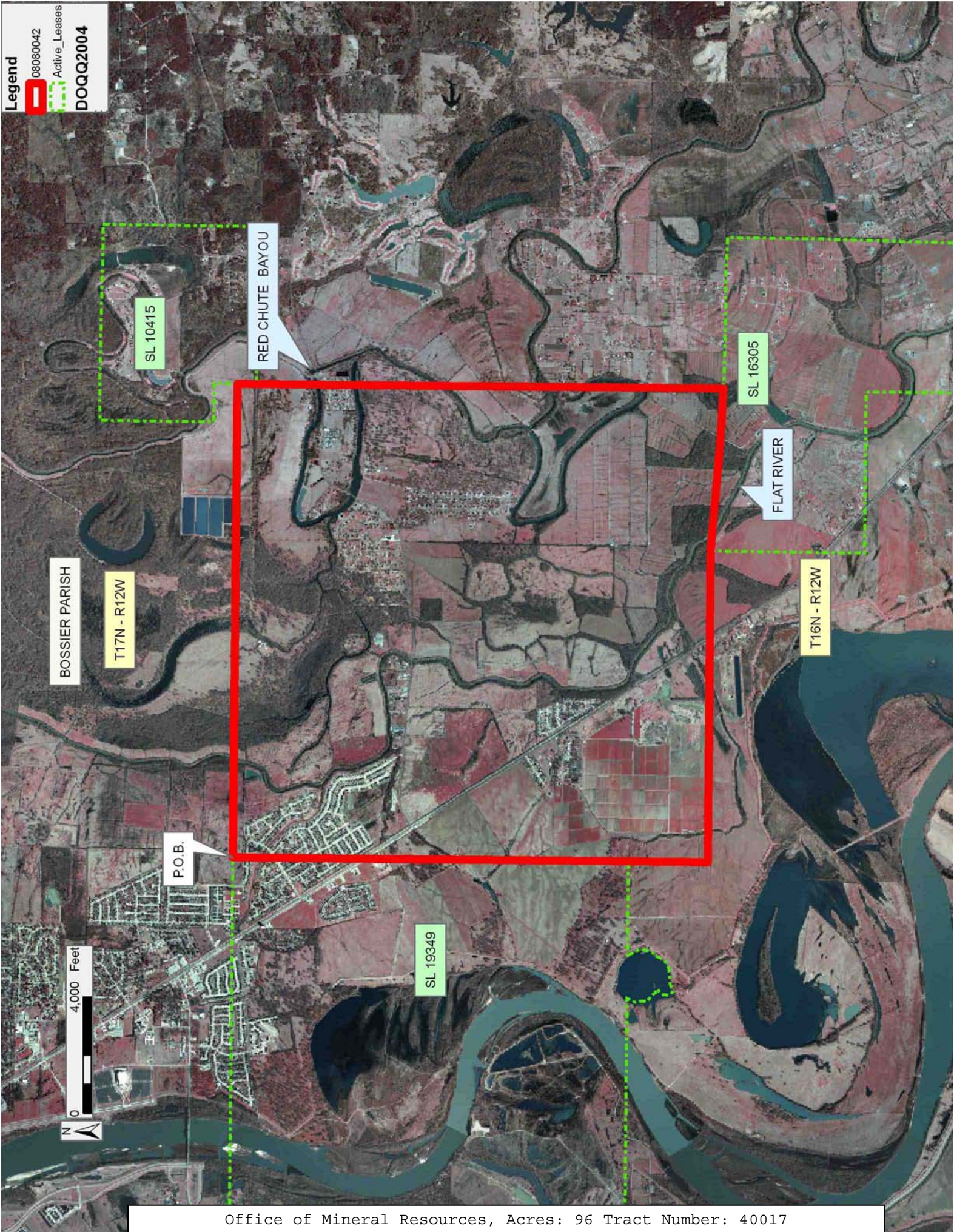
All of the lands now or formerly constituting the beds and bottoms of all water bodies of every nature and description as to which title is vested in the State of Louisiana, together with all islands arising therein and other lands formed by accretion or by reliction, where allowed by law, excepting tax adjudicated lands, and not presently under mineral lease on August 13, 2008, situated in Bossier Parish, Louisiana, and more particularly described as follows: Beginning at the Northeast corner of State Lease No. 19349 having Coordinates of X = 1,645,728.17 and Y = 652,364.67; thence East approximately 16,246 feet to a point on the West boundary of State Lease No. 10415, as amended, having a Coordinate of Y = 652,364.67; thence Southerly approximately 640 feet along the West boundary of said State Lease No. 10415 to its Southernmost Southwest corner; thence Southerly approximately 16,017 feet to a point on the North boundary of State Lease No. 16305 having a Coordinate of X = 1,661,976.70; thence Westerly approximately 5,593 feet along the North boundary of said State Lease No. 16305 to its Northwest corner; thence Westerly approximately 10,665 feet to a point having Coordinates of X = 1,645,728.17 and Y = 636,082.80; thence North 2,717.20 feet to the Southeast corner of said State Lease No. 19349 having Coordinates of X = 1,645,728.17 and Y = 638,800.00; thence North 13,564.67 feet along the East boundary of said State Lease No. 19349 to the point of beginning, **LESS AND EXCEPT** that portion, if any, of State Lease No. 10415, as amended, and State Lease No. 16305 that may lie within the above described tract, (This tract includes only waterbottoms claimed and owned by the state and specifically excludes any land which the state may claim or own and to which the mineral rights are vested in the state), containing approximately **96 acres**, all as more particularly outlined on a plat on file in the Office of Mineral Resources, Department of Natural Resources. All bearings, distances and coordinates are based on Louisiana Coordinate System of 1927, (North or South Zone), where applicable.

NOTE: The above description of the Tract nominated for lease has been provided and corrected, where required, exclusively by the nomination party. Any mineral lease selected from this Tract and awarded by the Louisiana State Mineral Board shall be without warranty of any kind, either express, implied, or statutory, including, but not limited to, the implied warranties of merchantability and fitness for a particular purpose. Should the mineral lease awarded by the Louisiana State Mineral Board be subsequently modified, cancelled or abrogated due to the existence of conflicting leases, operating agreements, private claims or other future obligations or conditions which may affect all or any portion of the leased Tract, it shall not relieve the Lessee of the obligation to pay any bonus due thereon to the Louisiana State Mineral Board, nor shall the Louisiana State Mineral Board be obligated to refund any consideration paid by the Lessor prior to such modification, cancellation, or abrogation, including, but not limited to, bonuses, rentals and royalties.

Applicant: THEOPHILUS OIL, GAS & LAND SERVICES, LLC

Bidder	Cash Payment	Price/ Acre	Rental	Oil	Gas	Other

Legend
08080042
Active_Leases
DOQQ2004



TRACT 40018 - Caddo Parish, Louisiana

All of the lands now or formerly constituting the beds and bottoms of all water bodies of every nature and description as to which title is vested in the State of Louisiana, together with all islands arising therein and other lands formed by accretion or by reliction, where allowed by law, excepting tax adjudicated lands, and not presently under mineral lease on August 13, 2008, situated in Caddo Parish, Louisiana, and more particularly described as follows: Beginning at a point having Coordinates of X = 1,614,260.00 and Y = 652,364.67; thence East 15,840.00 feet to the Northwest corner of State Lease No. 19349 having Coordinates of X = 1,630,100.00 and Y = 652,364.67; thence South 13,564.67 feet along the West boundary of said State Lease No. 19349 to its Southwest corner, also being the Northwest corner of State Lease No. 11155, as amended, having Coordinate of X = 1,630,100.00 and Y = 638,800.00; thence South 1,681.21 feet along the West boundary of said State Lease No. 11155 to a point having Coordinates of X = 1,630,100.00 and Y = 637,118.79; thence Westerly approximately 2,325 feet to the Northeast corner of State Lease No. 6316, as amended; thence Westerly approximately 7,540 feet along the North boundary of said State Lease No. 6316 to its Northwest corner; thence Westerly approximately 5,975 feet to a point having Coordinates of X = 1,614,260.00 and Y = 637,320.80; thence North 15,043.87 feet to the point of beginning, (This tract includes only waterbottoms claimed and owned by the state and specifically excludes any land which the state may claim or own and to which the mineral rights are vested in the state), containing approximately **80 acres**, all as more particularly outlined on a plat on file in the Office of Mineral Resources, Department of Natural Resources. All bearings, distances and coordinates are based on Louisiana Coordinate System of 1927, (North or South Zone), where applicable.

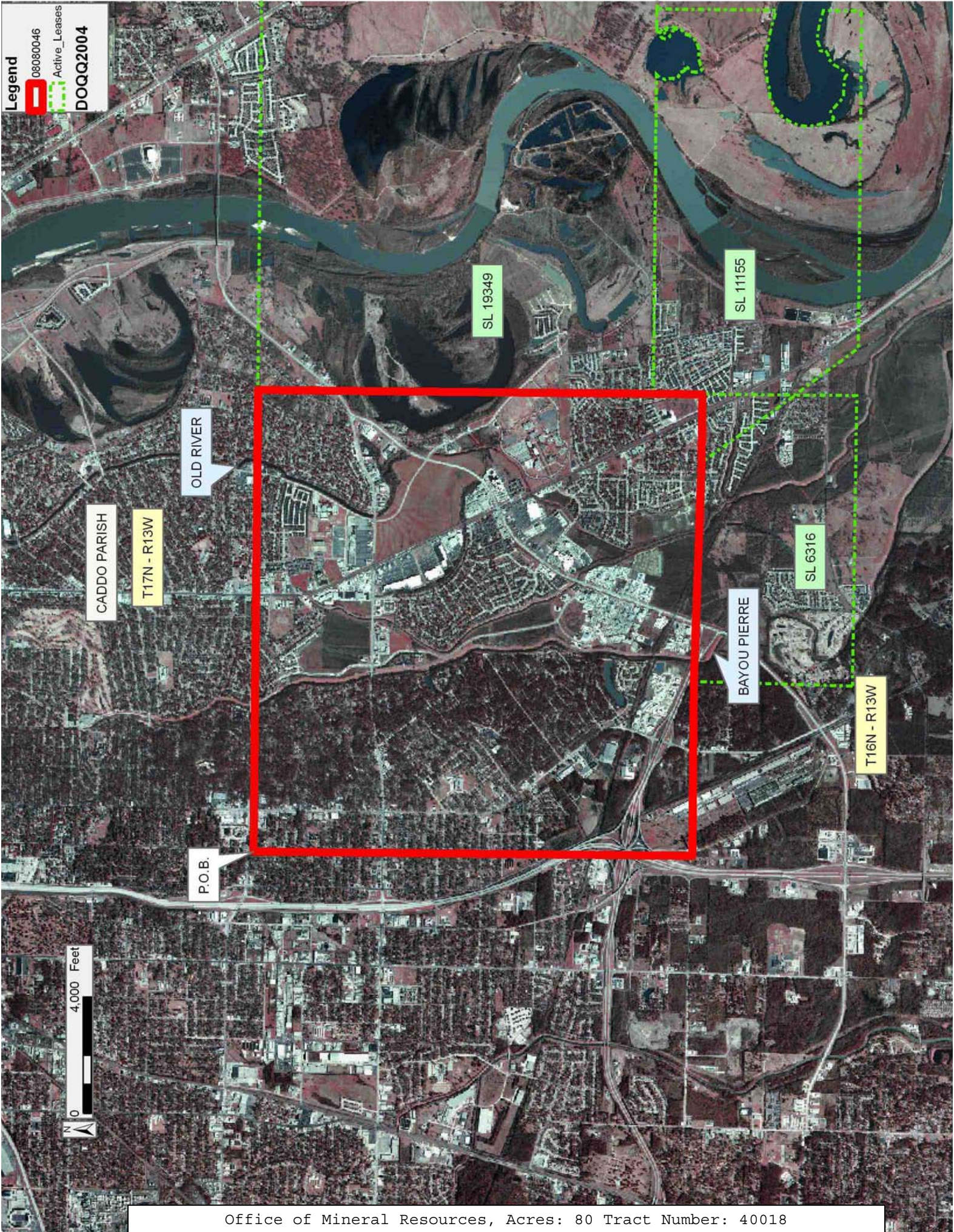
NOTE: The above description of the Tract nominated for lease has been provided and corrected, where required, exclusively by the nomination party. Any mineral lease selected from this Tract and awarded by the Louisiana State Mineral Board shall be without warranty of any kind, either express, implied, or statutory, including, but not limited to, the implied warranties of merchantability and fitness for a particular purpose. Should the mineral lease awarded by the Louisiana State Mineral Board be subsequently modified, cancelled or abrogated due to the existence of conflicting leases, operating agreements, private claims or other future obligations or conditions which may affect all or any portion of the leased Tract, it shall not relieve the Lessee of the obligation to pay any bonus due thereon to the Louisiana State Mineral Board, nor shall the Louisiana State Mineral Board be obligated to refund any consideration paid by the Lessor prior to such modification, cancellation, or abrogation, including, but not limited to, bonuses, rentals and royalties.

Applicant: THEOPHILUS OIL, GAS & LAND SERVICES, LLC

Bidder	Cash Payment	Price/ Acre	Rental	Oil	Gas	Other

Legend

080800046
Active_Leases
DOQQ2004



TRACT 40019 - Bossier Parish, Louisiana

All of the lands now or formerly constituting the beds and bottoms of all water bodies of every nature and description as to which title is vested in the State of Louisiana, together with all islands arising therein and other lands formed by accretion or by reliction, where allowed by law, excepting tax adjudicated lands, and not presently under mineral lease on August 13, 2008, situated in Bossier Parish, Louisiana, and more particularly described as follows: Beginning at a point having Coordinates of X = 1,664,976.13 and Y = 644,666.20; thence East 3,500.00 feet to a point having Coordinates of X = 1,668,476.13 and Y = 644,666.20; thence South 3,690.28 feet to a point on the North boundary of State Lease No. 16677 having Coordinates of X = 1,668,476.13 and Y = 640,975.92; thence along the boundary of said State Lease No. 16677 the following courses: North 88 degrees 55 minutes 09 seconds West 1,276.36 feet to its Northwest corner having Coordinates of X = 1,667,200.00 and Y = 641,000.00 and South approximately 5,390 feet to its point of intersection with the North boundary of State Lease No. 5933 having a Coordinate of X = 1,667,200.00; thence Westerly approximately 49 feet along the North boundary of said State Lease No. 5933 to its Northwest corner, also being the Northeast corner of State Lease No. 16305; thence Westerly approximately 5,173 feet along the North boundary of said State Lease No. 16305 to a point on the North boundary of said State Lease No. 16305 having a Coordinate of X = 1,661,976.70; thence Northerly approximately 16,017 feet to the Southernmost Southwest corner of State Lease No. 10415, as amended; thence Easterly approximately 3,000 feet along the South boundary of said State Lease No. 10415 to its point of intersection with a North-South line having a Coordinate of X = 1,664,976.13; thence South approximately 7,000 feet to the point of beginning, **LESS AND EXCEPT** that portion, if any, of State Lease No. 5933, State Lease No. 10415, as amended, and State Lease No. 16305 that may lie within the above described tract, containing approximately **30 acres**, all as more particularly outlined on a plat on file in the Office of Mineral Resources, Department of Natural Resources. All bearings, distances and coordinates are based on Louisiana Coordinate System of 1927, (North or South Zone), where applicable.

NOTE: The above description of the Tract nominated for lease has been provided and corrected, where required, exclusively by the nomination party. Any mineral lease selected from this Tract and awarded by the Louisiana State Mineral Board shall be without warranty of any kind, either express, implied, or statutory, including, but not limited to, the implied warranties of merchantability and fitness for a particular purpose. Should the mineral lease awarded by the Louisiana State Mineral Board be subsequently modified, cancelled or abrogated due to the existence of conflicting leases, operating agreements, private claims or other future obligations or conditions which may affect all or any portion of the leased Tract, it shall not relieve the Lessee of the obligation to pay any bonus due thereon to the Louisiana State Mineral Board, nor shall the Louisiana State Mineral Board be obligated to refund any consideration

paid by the Lessor prior to such modification, cancellation, or abrogation, including, but not limited to, bonuses, rentals and royalties.

Applicant: THEOPHILUS OIL, GAS & LAND SERVICES, LLC

Bidder	Cash Payment	Price/ Acre	Rental	Oil	Gas	Other

Legend

08080043

Active_Leases

DOQQ2004

