

TRACT 39996 - Portion of Blocks 10, and 11, West Cameron Area, Revised, Cameron Parish, Louisiana

The beds and bottoms of all water bodies belonging to the State of Louisiana located in Blocks 10, and 11, West Cameron Area, Revised, together with any present lands formed by accretion to the shoreline or islands formed therein, located in Cameron Parish, Louisiana, owned by and not presently under mineral lease as of August 13, 2008, from the State of Louisiana, the geographical area of which is more fully described as follows: Beginning at a point on the West Line of State Lease No. 19516 having Coordinates of X = 1,283,403.00 and Y = 399,767.00; thence South 50 degrees 46 minutes 19 seconds East 6,122.09 feet along the West line of State Lease No. 19516 to its Southern Southeast Corner having Coordinates of X = 1,288,145.38 and Y = 395,895.34, said point being Northern Southwest Corner of State Lease No. 19517 and on the boundary line between Block 11 and Block 10 of the West Cameron Area; thence South 50 degrees 46 minutes 19 Seconds East 3,328.69 feet along the Southern boundary of said State Lease No. 19517 to a point having Coordinates of X = 1,290,723.90 and Y = 393,790.24, said point being on the South Line of Block 10; thence West 2,578.52 feet to the Southwest Corner of said Block 10 having Coordinates of X = 1,288,145.38 and Y = 393,790.24; thence West 4,742.38 feet along the South Line of said Block 11 to a point having Coordinates of X = 1,283,403.00 and Y = 393,790.24; thence North 5,976.76 feet to the point of beginning, containing approximately **502.24 acres**, all as more particularly outlined on a plat on file in the Office of Mineral Resources, Department of Natural Resources. All bearings, distances and coordinates are based on Louisiana Coordinate System of 1927, (North or South Zone).

NOTE: The above description of the Tract nominated for lease has been provided and corrected, where required, exclusively by the nomination party. Any mineral lease selected from this Tract and awarded by the Louisiana State Mineral Board shall be without warranty of any kind, either express, implied, or statutory, including, but not limited to, the implied warranties of merchantability and fitness for a particular purpose. Should the mineral lease awarded by the Louisiana State Mineral Board be subsequently modified, cancelled or abrogated due to the existence of conflicting leases, operating agreements, private claims or other future obligations or conditions which may affect all or any portion of the leased Tract, it shall not relieve the Lessee of the obligation to pay any bonus due thereon to the Louisiana State Mineral Board, nor shall the Louisiana State Mineral Board be obligated to refund any consideration paid by the Lessor prior to such modification, cancellation, or abrogation, including, but not limited to, bonuses, rentals and royalties.

NOTE: The State of Louisiana does hereby reserve, and this lease shall be subject to, the imprescriptible right of surface use in the nature of a servitude in favor of the Department of Natural Resources, including its Offices and Commissions, for the sole purpose of implementing, constructing, servicing and maintaining approved coastal zone management and/or restoration projects. Utilization of any and all rights derived

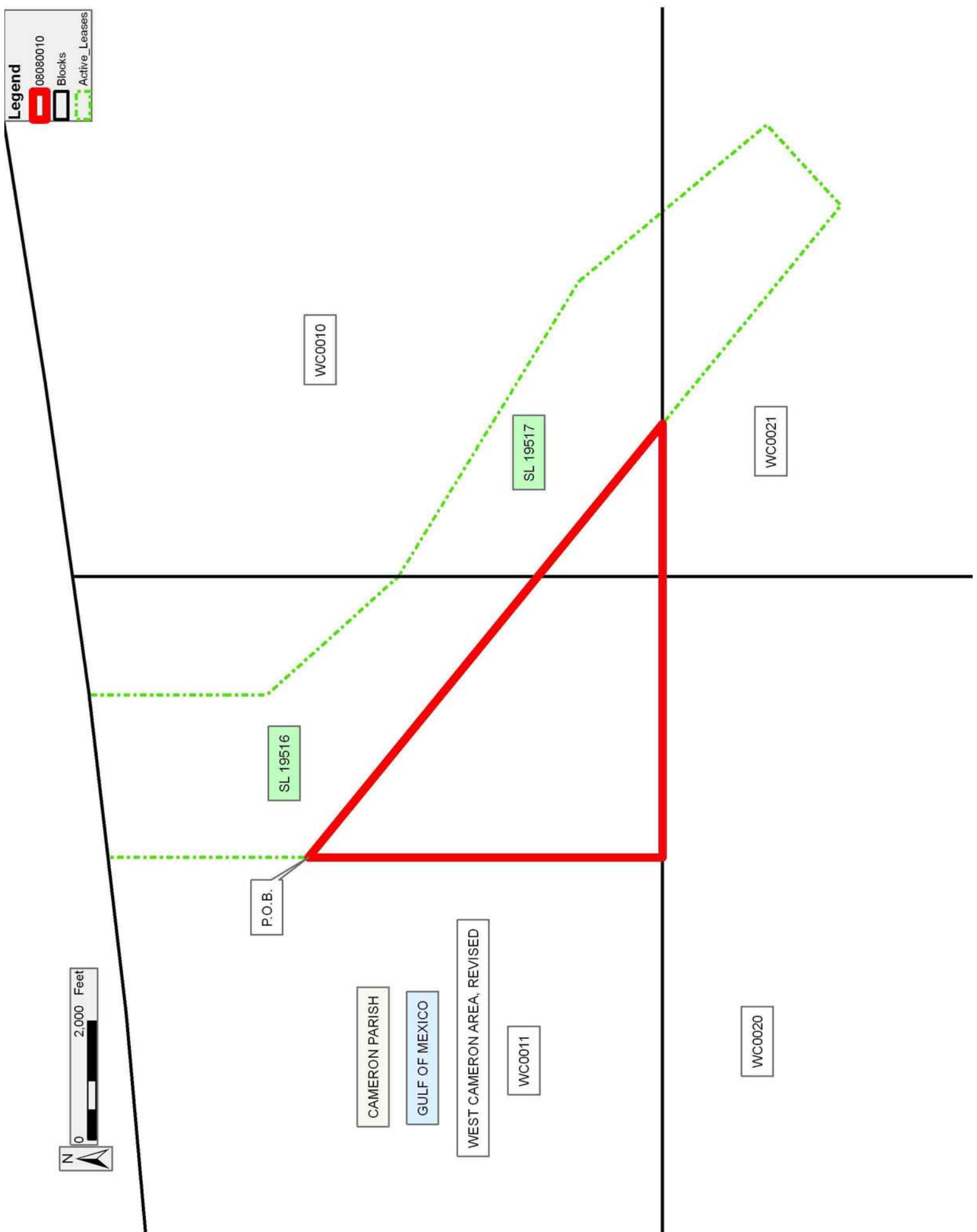
under this lease by the mineral lessee, its agents, successors or assigns, shall not interfere with nor hinder the reasonable surface use by the Department of Natural Resources, its Offices or Commissions, as herein above reserved.

Applicant: GRAY PRODUCTION COMPANY

Bidder	Cash Payment	Price/Acre	Rental	Oil	Gas	Other

Legend

- 08080010
- Blocks
- Active_Leases



TRACT 39997 - Portion of Block 21, West Cameron Area, Revised, Cameron Parish, Louisiana

The beds and bottoms of all water bodies belonging to the State of Louisiana located in Block 21, West Cameron Area, Revised, together with any present lands formed by accretion to the shoreline or islands formed therein, located in Cameron Parish, Louisiana, owned by and not presently under mineral lease as of August 13, 2008, from the State of Louisiana, the geographical area of which is more fully described as follows: Beginning at the Northwest Corner of Block 21, West Cameron Area having Coordinates of X = 1,288,145.38 and Y = 393,790.24; thence East 2,578.52 feet along the North Line of said Block 21 to a point on the West Line of State Lease No. 19517 having Coordinates of X = 1,290,723.90 and Y = 393,790.24; thence South 50 degrees 46 minutes 19 Seconds East 4,752.05 feet to a point having Coordinates of X = 1,294,405.00 and Y = 390,785.00, said point being on the Southern Southwest Corner of State Lease No. 19517; thence West 6,259.62 feet to a point on the West Line of said Block 21 having Coordinates of X = 1,288,145.38 and Y = 390,785.00; thence North 3,005.24 feet to the point of beginning, containing approximately **304.88 acres**, all as more particularly outlined on a plat on file in the Office of Mineral Resources, Department of Natural Resources. All bearings, distances and coordinates are based on Louisiana Coordinate System of 1927, (North or South Zone).




NOTE: The above description of the Tract nominated for lease has been provided and corrected, where required, exclusively by the nomination party. Any mineral lease selected from this Tract and awarded by the Louisiana State Mineral Board shall be without warranty of any kind, either express, implied, or statutory, including, but not limited to, the implied warranties of merchantability and fitness for a particular purpose. Should the mineral lease awarded by the Louisiana State Mineral Board be subsequently modified, cancelled or abrogated due to the existence of conflicting leases, operating agreements, private claims or other future obligations or conditions which may affect all or any portion of the leased Tract, it shall not relieve the Lessee of the obligation to pay any bonus due thereon to the Louisiana State Mineral Board, nor shall the Louisiana State Mineral Board be obligated to refund any consideration paid by the Lessor prior to such modification, cancellation, or abrogation, including, but not limited to, bonuses, rentals and royalties.

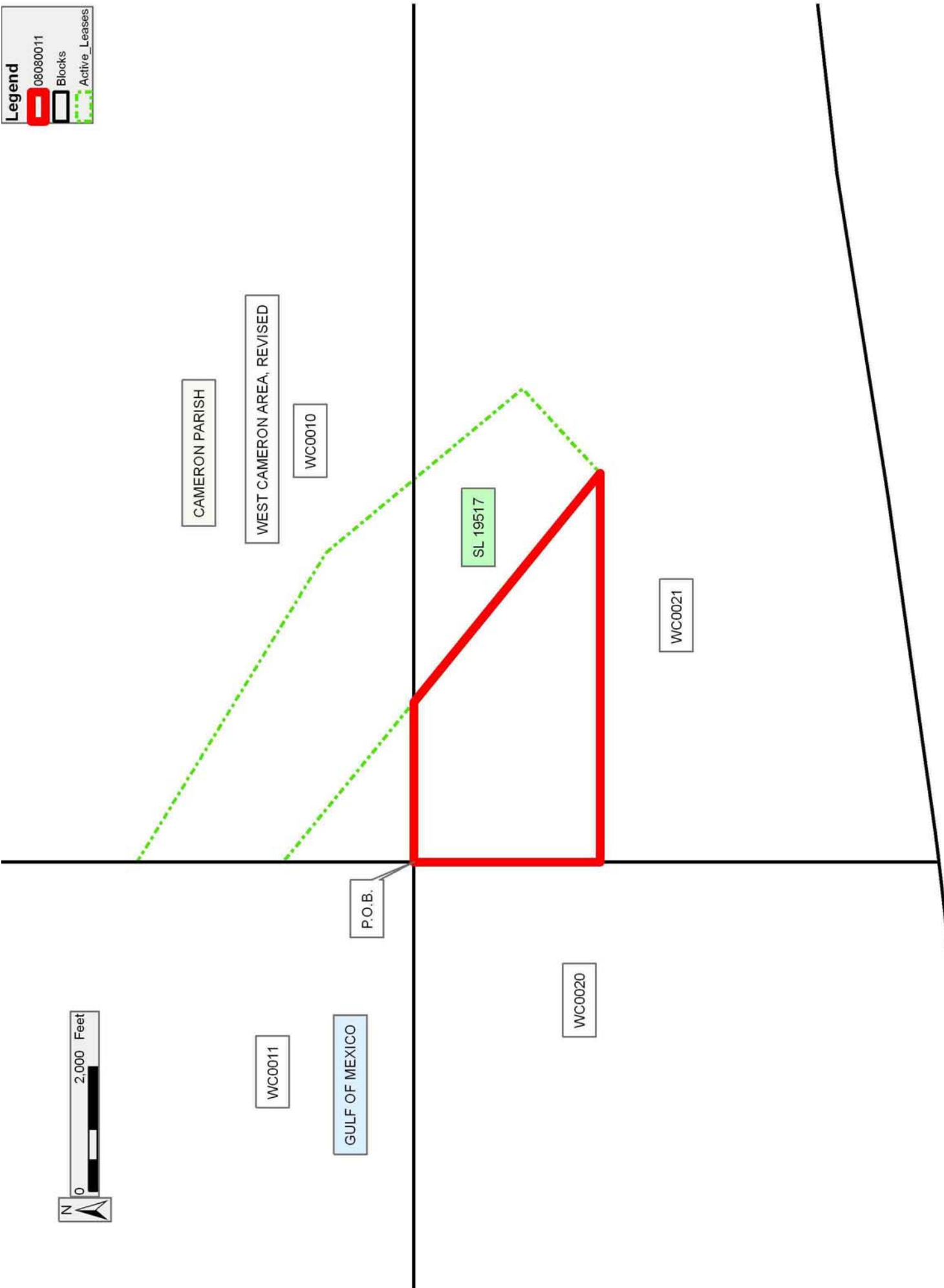
NOTE: The State of Louisiana does hereby reserve, and this lease shall be subject to, the imprescriptible right of surface use in the nature of a servitude in favor of the Department of Natural Resources, including its Offices and Commissions, for the sole purpose of implementing, constructing, servicing and maintaining approved coastal zone management and/or restoration projects. Utilization of any and all rights derived under this lease by the mineral lessee, its agents, successors or assigns, shall not interfere with nor hinder the reasonable surface use by the Department of Natural Resources, its Offices or Commissions, as herein above reserved.

Applicant: GRAY PRODUCTION COMPANY

Bidder	Cash Payment	Price/Acre	Rental	Oil	Gas	Other

Legend

-  08080011
-  Blocks
-  Active_Leases



TRACT 39998 - Portion of Block 20, West Cameron Area, Revised, Cameron Parish, Louisiana

The beds and bottoms of all water bodies belonging to the State of Louisiana located in Block 20, West Cameron Area, Revised, together with any present lands formed by accretion to the shoreline or islands formed therein, located in Cameron Parish, Louisiana, owned by and not presently under mineral lease as of August 13, 2008, from the State of Louisiana, the geographical area of which is more fully described as follows: Beginning at the Northeast Corner of Block 20, West Cameron Area having Coordinates of X = 1,283,145.38 feet and Y = 393,790.24 feet; thence South 8,455.17 feet to a point on the Three Mile Line, as decreed by the Supreme Court of the United States, as determined by a Special Master appointed therein, in litigation styled *United States v. State of Louisiana et al No. 9 Original*, in 1975, having Coordinates of X = 1,288,145.38 feet and Y = 385,335.07 feet; thence South 83 degrees 19 minutes 40 Seconds West 4,774.71 feet along said Three Mile Line to a point having Coordinates of X = 1,283,403.00 feet and Y = 384,780.30 feet; thence North 9,009.94 feet to a point on the North Line of said Block 20 having Coordinates of X = 1,283,403.00 feet and Y = 393,790.24 feet; thence East 4,742.38 feet along the North Line of said Block 20 to the point of beginning, containing approximately **950.71 acres, LESS AND EXCEPT** that portion thereof, if any, lying seaward of the line three nautical miles from the coast line of Louisiana, as said three mile line has been decreed by the Supreme Court of the United States, as determined by a Special Master appointed therein, in litigation styled **United States v. State of Louisiana et al No. 9 Original**, in 1975, all as more particularly outlined on a plat in the Office of Mineral Resources, Department of Natural Resources. All bearings, distances and coordinates are based on the Louisiana Coordinate System of 1927, (South Zone).

NOTE: The above description of the Tract nominated for lease has been provided and corrected, where required, exclusively by the nomination party. Any mineral lease selected from this Tract and awarded by the Louisiana State Mineral Board shall be without warranty of any kind, either express, implied, or statutory, including, but not limited to, the implied warranties of merchantability and fitness for a particular purpose. Should the mineral lease awarded by the Louisiana State Mineral Board be subsequently modified, cancelled or abrogated due to the existence of conflicting leases, operating agreements, private claims or other future obligations or conditions which may affect all or any portion of the leased Tract, it shall not relieve the Lessee of the obligation to pay any bonus due thereon to the Louisiana State Mineral Board, nor shall the Louisiana State Mineral Board be obligated to refund any consideration paid by the Lessor prior to such modification, cancellation, or abrogation, including, but not limited to, bonuses, rentals and royalties.

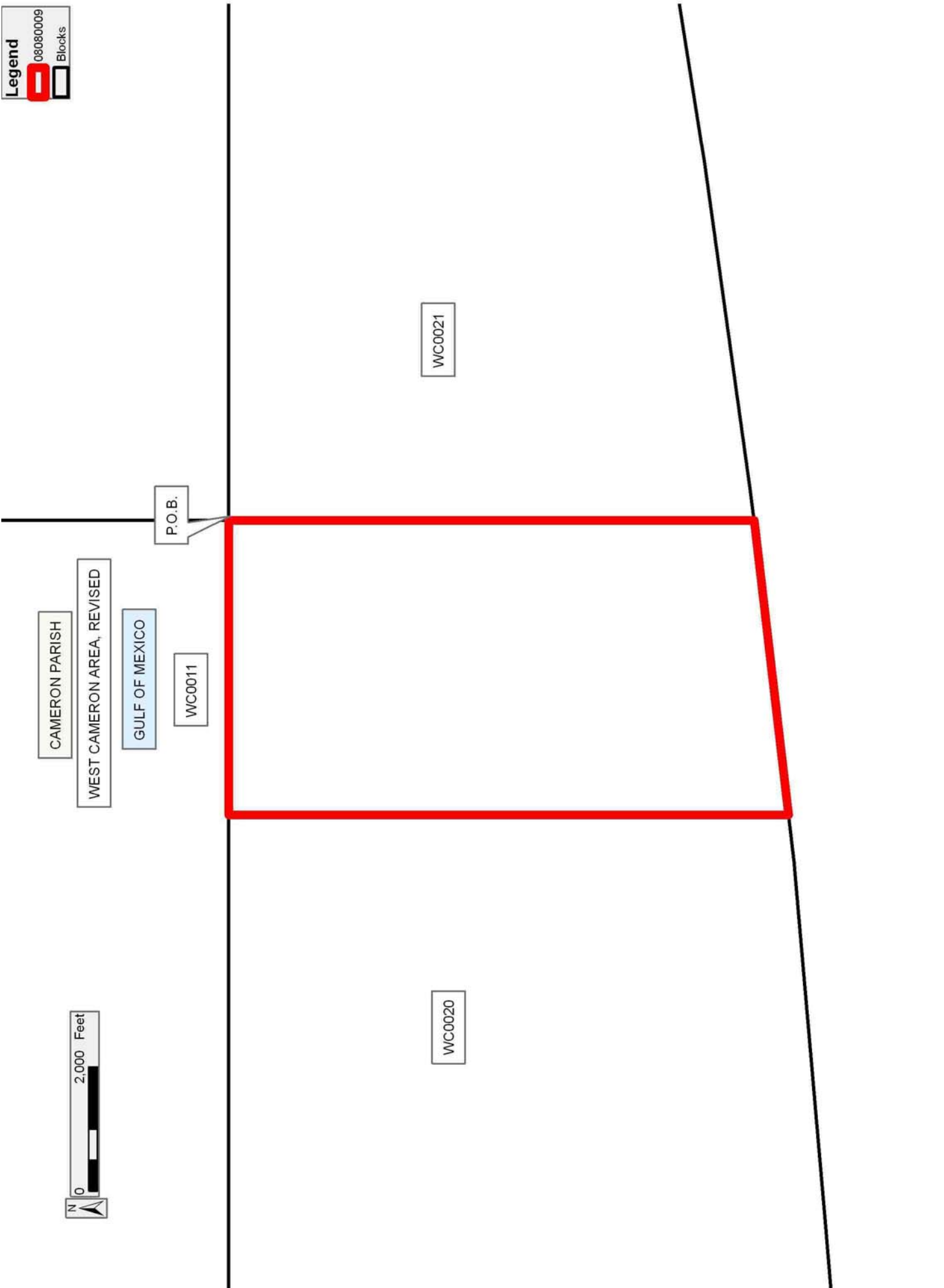
NOTE: The State of Louisiana does hereby reserve, and this lease shall be subject to, the imprescriptible right of surface use in the nature of a servitude in favor of the Department of Natural Resources, including its

Offices and Commissions, for the sole purpose of implementing, constructing, servicing and maintaining approved coastal zone management and/or restoration projects. Utilization of any and all rights derived under this lease by the mineral lessee, its agents, successors or assigns, shall not interfere with nor hinder the reasonable surface use by the Department of Natural Resources, its Offices or Commissions, as herein above reserved.

Applicant: GRAY PRODUCTION COMPANY

Bidder	Cash Payment	Price/Acre	Rental	Oil	Gas	Other

Legend
08080009
Blocks



TRACT 39999 - Portion of Block 20, West Cameron Area, Revised, Cameron Parish, Louisiana

The beds and bottoms of all water bodies belonging to the State of Louisiana located in Block 20, West Cameron Area, Revised, together with any present lands formed by accretion to the shoreline or islands formed therein, located in Cameron Parish, Louisiana, owned by and not presently under mineral lease as of August 13, 2008, from the State of Louisiana, the geographical area of which is more fully described as follows: Beginning at a point on the North line of Block 20, West Cameron Area having Coordinates of X = 1,283,403.00 and Y = 393,790.24 ; thence South 4,500.00 feet to a point having Coordinates of X = 1,283,403.00 and Y = 389,290.24; thence West 10,015.67 feet to a point of the West Line of said Block 20, having Coordinates of X = 1,273,387.33 and Y = 389,290.24; thence North 4,500.00 feet along the West Line of said Block 20 to its Northwest corner having Coordinates of X = 1,273,387.33 and Y = 393,790.24; thence East 10,015.67 feet along the North Line of said Block 20 to the point of beginning, containing approximately **1,034.68 acres**, all as more particularly outlined on a plat on file in the Office of Mineral Resources, Department of Natural Resources. All bearings, distances and coordinates are based on Louisiana Coordinate System of 1927, (North or South Zone).

NOTE: The above description of the Tract nominated for lease has been provided and corrected, where required, exclusively by the nomination party. Any mineral lease selected from this Tract and awarded by the Louisiana State Mineral Board shall be without warranty of any kind, either express, implied, or statutory, including, but not limited to, the implied warranties of merchantability and fitness for a particular purpose. Should the mineral lease awarded by the Louisiana State Mineral Board be subsequently modified, cancelled or abrogated due to the existence of conflicting leases, operating agreements, private claims or other future obligations or conditions which may affect all or any portion of the leased Tract, it shall not relieve the Lessee of the obligation to pay any bonus due thereon to the Louisiana State Mineral Board, nor shall the Louisiana State Mineral Board be obligated to refund any consideration paid by the Lessor prior to such modification, cancellation, or abrogation, including, but not limited to, bonuses, rentals and royalties.

NOTE: The State of Louisiana does hereby reserve, and this lease shall be subject to, the imprescriptible right of surface use in the nature of a servitude in favor of the Department of Natural Resources, including its Offices and Commissions, for the sole purpose of implementing, constructing, servicing and maintaining approved coastal zone management and/or restoration projects. Utilization of any and all rights derived under this lease by the mineral lessee, its agents, successors or assigns, shall not interfere with nor hinder the reasonable surface use by the Department of Natural Resources, its Offices or Commissions, as herein above reserved.

Applicant: GRAY PRODUCTION COMPANY

Bidder	Cash Payment	Price/Acre	Rental	Oil	Gas	Other

Legend
08080007
Blocks

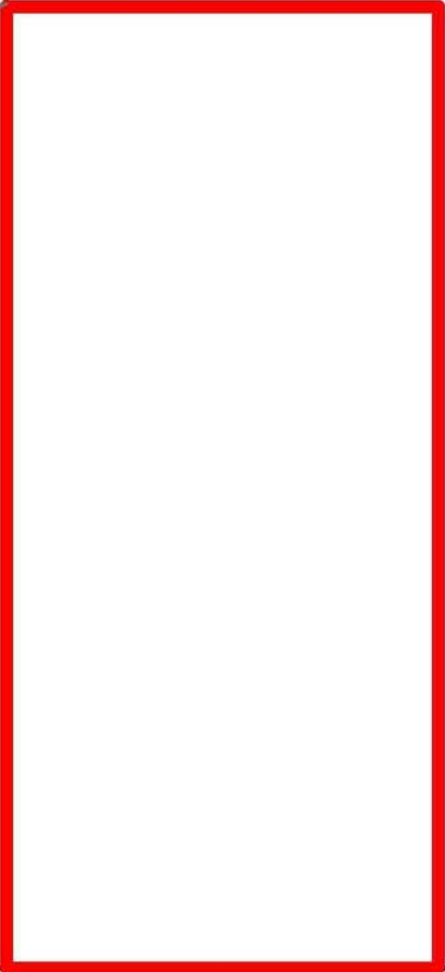
CAMERON PARISH

WEST CAMERON AREA, REVISED

GULF OF MEXICO

WC0011

P.O.B.



WC0020



WC0019

TRACT 40000 - Portion of Block 21, West Cameron Area, Revised, Cameron Parish, Louisiana

The beds and bottoms of all water bodies belonging to the State of Louisiana located in Block 21, West Cameron Area, Revised, together with any present lands formed by accretion to the shoreline or islands formed therein, located in Cameron Parish, Louisiana, owned by and not presently under mineral lease as of August 13, 2008, from the State of Louisiana, the geographical area of which is more fully described as follows: Beginning at a point on the West line of Block 21, West Cameron Area having Coordinates of X = 1,288,145.38 feet and Y = 390,785.00 feet; thence South 5,449.93 feet to a point on the Three Mile Line, as decreed by the Supreme Court of the United States, as determined by a Special Master appointed therein, in litigation styled *United States v. State of Louisiana et al No. 9 Original*, in 1975, having Coordinates of X = 1,288,145.38 feet and Y = 385,335.07 feet; thence North 83 degrees 19 minutes 40 Seconds East 128.49 feet along said Three Mile Line to a point having Coordinates of X = 1,288,273 feet and Y = 385,350 feet; thence Northeasterly, along said Three Mile Line, along an arc to the Left having a radius of 18,240.60 feet and a center having Coordinates X = 1,286,154 and Y = 403,467 to a point on said Three Mile Line having Coordinates of X = 1,288,689 feet and Y = 385,403 feet; thence North 82 degrees 00 minutes 42 seconds East 5,310.53 feet along said Three Mile Line to a point having Coordinates of X = 1,293,948 feet and Y = 386,141 feet; thence Northeasterly, along said Three Mile Line, along an arc to the Left having a radius of 18,240.60 feet and a center having Coordinates of X = 1,291,413 feet and Y = 404,205 feet to a point on said Three Mile Line having Coordinates of X = 1,294,264 feet and Y = 386,189 feet; thence North 81 degrees 00 minutes 28 Seconds East along said Three Mile Line 2,264.65 feet to a point having Coordinates of X = 1,296,500.82 feet and Y = 386,542.97 feet; thence North 2,144.67 feet to the Southwest Corner of State Lease No. 17774 having Coordinates of X = 1,296,500.82 and Y = 388,687.64 feet; thence North 2,097.36 feet along the West Boundary Line of State Lease No. 17774 to a point having Coordinates of X = 1,296,500.82 feet and Y = 390,785.00 feet; thence West 8,355.44 feet to the point of beginning, containing approximately **933.26 acres, LESS AND EXCEPT** that portion thereof, if any, lying seaward of the line three nautical miles from the coast line of Louisiana, as said three mile line has been decreed by the Supreme Court of the United States, as determined by a Special Master appointed therein, in litigation styled **United States v. State of Louisiana et al No. 9 Original**, in 1975, all as more particularly outlined on a plat in the Office of Mineral Resources, Department of Natural Resources. All bearings, distances and coordinates are based on the Louisiana Coordinate System of 1927, (South Zone).

NOTE: The above description of the Tract nominated for lease has been provided and corrected, where required, exclusively by the nomination party. Any mineral lease selected from this Tract and awarded by the Louisiana State Mineral Board shall be without warranty of any kind, either express, implied, or statutory, including, but not limited to, the

implied warranties of merchantability and fitness for a particular purpose. Should the mineral lease awarded by the Louisiana State Mineral Board be subsequently modified, cancelled or abrogated due to the existence of conflicting leases, operating agreements, private claims or other future obligations or conditions which may affect all or any portion of the leased Tract, it shall not relieve the Lessee of the obligation to pay any bonus due thereon to the Louisiana State Mineral Board, nor shall the Louisiana State Mineral Board be obligated to refund any consideration paid by the Lessor prior to such modification, cancellation, or abrogation, including, but not limited to, bonuses, rentals and royalties.

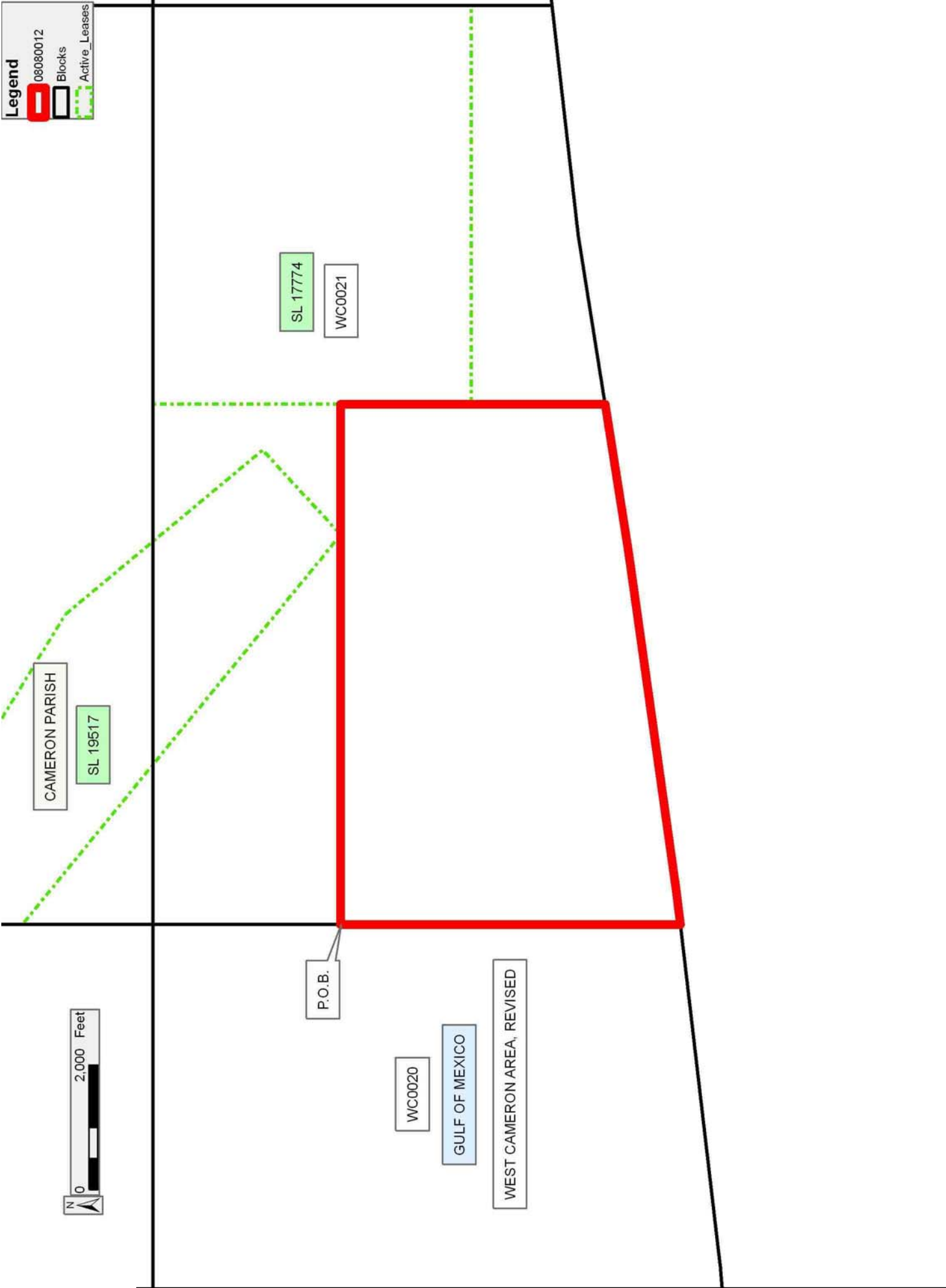
NOTE: The State of Louisiana does hereby reserve, and this lease shall be subject to, the imprescriptible right of surface use in the nature of a servitude in favor of the Department of Natural Resources, including its Offices and Commissions, for the sole purpose of implementing, constructing, servicing and maintaining approved coastal zone management and/or restoration projects. Utilization of any and all rights derived under this lease by the mineral lessee, its agents, successors or assigns, shall not interfere with nor hinder the reasonable surface use by the Department of Natural Resources, its Offices or Commissions, as herein above reserved.

Applicant: GRAY PRODUCTION COMPANY

Bidder	Cash Payment	Price/Acre	Rental	Oil	Gas	Other

Legend

- 08080012
- Blocks
- Active_Leases



TRACT 40001 - Portion of Block 20, West Cameron Area, Revised, Cameron Parish, Louisiana

The beds and bottoms of all water bodies belonging to the State of Louisiana located in Block 20, West Cameron Area, Revised, together with any present lands formed by accretion to the shoreline or islands formed therein, located in Cameron Parish, Louisiana, owned by and not presently under mineral lease as of August 13, 2008, from the State of Louisiana, the geographical area of which is more fully described as follows: Beginning at a point on the West line of Block 20, West Cameron Area having Coordinates of X = 1,273,387.33 feet and Y = 389,290.24 feet; thence South 5,390.66 feet to a point on the Three Mile Line, as decreed by the Supreme Court of the United States, as determined by a Special Master appointed therein, in litigation styled *United States v. State of Louisiana et al No. 9 Original*, in 1975, having Coordinates of X = 1,273,387.33 feet and Y = 383,899.58 feet; thence North 85 degrees 15 minutes 35 Seconds East 3,598.98 feet along said Three Mile Line to a point having Coordinates of X = 1,276,974 feet and Y = 384,197 feet; thence Northeasterly, along said Three Mile Line, along an arc to the Left having a radius of 18,240.60 feet and a center having Coordinates X = 1,275,467 feet and Y = 402,375 feet to a point on said Three Mile Line having Coordinates of X = 1,277,050 feet and Y = 384,203 feet; thence North 85 Degrees 01 Minutes 20 Seconds East 5,313.04 feet along said Three Mile Line to a point having Coordinates of X = 1,282,343.00 feet and Y = 384,664.00 feet; thence Northeasterly, along said Three Mile Line, along an arc to the Left having a radius of 18,240.60 feet and a center having Coordinates of X = 1,280,760 feet and Y = 402,836 feet to a point on said Three Mile Line having Coordinates of X = 1,282,879 feet and Y = 384,719 feet; thence North 83 degrees 19 minutes 40 seconds East 527.57 feet along said Three Mile Line to a point having Coordinates of X = 1,283,403 feet and Y = 384,780 feet; thence North 4,509.94 feet to a point having Coordinates of X = 1,283,403.00 feet and Y = 389,290.24 feet; thence West 10,015.67 feet to the point of beginning, containing approximately **1,141.87 acres, LESS AND EXCEPT** that portion thereof, if any, lying seaward of the line three nautical miles from the coast line of Louisiana, as said three mile line has been decreed by the Supreme Court of the United States, as determined by a Special Master appointed therein, in litigation styled **United States v. State of Louisiana et al No. 9 Original**, in 1975, all as more particularly outlined on a plat in the Office of Mineral Resources, Department of Natural Resources. All bearings, distances and coordinates are based on the Louisiana Coordinate System of 1927, (South Zone).

NOTE: The above description of the Tract nominated for lease has been provided and corrected, where required, exclusively by the nomination party. Any mineral lease selected from this Tract and awarded by the Louisiana State Mineral Board shall be without warranty of any kind, either express, implied, or statutory, including, but not limited to, the implied warranties of merchantability and fitness for a particular purpose. Should the mineral lease awarded by the Louisiana State Mineral

Board be subsequently modified, cancelled or abrogated due to the existence of conflicting leases, operating agreements, private claims or other future obligations or conditions which may affect all or any portion of the leased Tract, it shall not relieve the Lessee of the obligation to pay any bonus due thereon to the Louisiana State Mineral Board, nor shall the Louisiana State Mineral Board be obligated to refund any consideration paid by the Lessor prior to such modification, cancellation, or abrogation, including, but not limited to, bonuses, rentals and royalties.

NOTE: The State of Louisiana does hereby reserve, and this lease shall be subject to, the imprescriptible right of surface use in the nature of a servitude in favor of the Department of Natural Resources, including its Offices and Commissions, for the sole purpose of implementing, constructing, servicing and maintaining approved coastal zone management and/or restoration projects. Utilization of any and all rights derived under this lease by the mineral lessee, its agents, successors or assigns, shall not interfere with nor hinder the reasonable surface use by the Department of Natural Resources, its Offices or Commissions, as herein above reserved.

Applicant: GRAY PRODUCTION COMPANY

Bidder	Cash Payment	Price/Acre	Rental	Oil	Gas	Other

Legend
08080008
Blocks

CAMERON PARISH

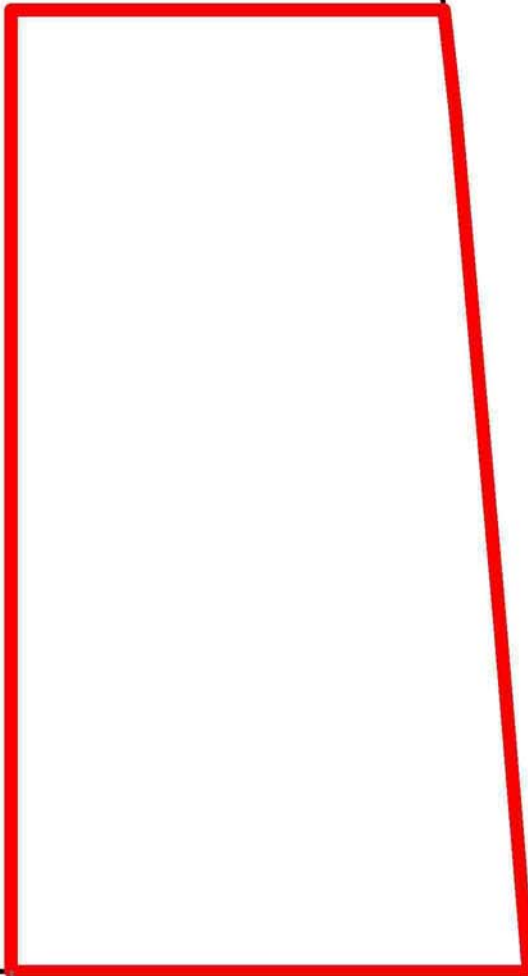
GULF OF MEXICO

WEST CAMERON AREA, REVISED

WC0020

P.O.B.

WC0019



TRACT 40002 - Portion of Block 21, West Cameron Area, Revised, Cameron Parish, Louisiana

The beds and bottoms of all water bodies belonging to the State of Louisiana located in Block 21, West Cameron Area, Revised, together with any present lands formed by accretion to the shoreline or islands formed therein, located in Cameron Parish, Louisiana, owned by and not presently under mineral lease as of August 13, 2008, from the State of Louisiana, the geographical area of which is more fully described as follows: Beginning at the Southwest Corner of State Lease No. 17774 having Coordinates of X = 1,296,500.82 feet and Y = 388,687.64 feet; thence South 2,144.67 feet to a point on the Three Mile Line, as decreed by the Supreme Court of the United States, as determined by a Special Master appointed therein, in litigation styled *United States v. State of Louisiana et al No. 9 Original*, in 1975, having Coordinates of X = 1,296,500.82 feet and Y = 386,542.97 feet; thence North 81 degrees 00 minutes 28 Seconds East 2,744.92 feet along said Three Mile Line to a point having Coordinates of X = 1,299,212 feet and Y = 386,972 feet; thence North 83 degrees 27 minutes 42 seconds East 3,715.59 feet along said Three Mile Line to a point of X = 1,302,903.42 feet and Y = 387,395.08 feet, said point being located on the East line of Block 21, West Cameron Area; thence North 1,292.56 feet along the East line of said Block 21 to a point on the South line of said State Lease No. 17774 to a point having Coordinates of X = 1,302,903.42 feet and Y = 388,687.64 feet; thence West 6,402.60 feet along the South Line of said State Lease No. 17774 to the point of beginning, containing approximately **247.60 acres, LESS AND EXCEPT** that portion thereof, if any, lying seaward of the line three nautical miles from the coast line of Louisiana, as said three mile line has been decreed by the Supreme Court of the United States, as determined by a Special Master appointed therein, in litigation styled **United States v. State of Louisiana et al No. 9 Original**, in 1975, all as more particularly outlined on a plat in the Office of Mineral Resources, Department of Natural Resources. All bearings, distances and coordinates are based on the Louisiana Coordinate System of 1927, (South Zone).

NOTE: The above description of the Tract nominated for lease has been provided and corrected, where required, exclusively by the nomination party. Any mineral lease selected from this Tract and awarded by the Louisiana State Mineral Board shall be without warranty of any kind, either express, implied, or statutory, including, but not limited to, the implied warranties of merchantability and fitness for a particular purpose. Should the mineral lease awarded by the Louisiana State Mineral Board be subsequently modified, cancelled or abrogated due to the existence of conflicting leases, operating agreements, private claims or other future obligations or conditions which may affect all or any portion of the leased Tract, it shall not relieve the Lessee of the obligation to pay any bonus due thereon to the Louisiana State Mineral Board, nor shall the Louisiana State Mineral Board be obligated to refund any consideration paid by the Lessor prior to such modification, cancellation, or abrogation, including, but not limited to, bonuses, rentals and royalties.

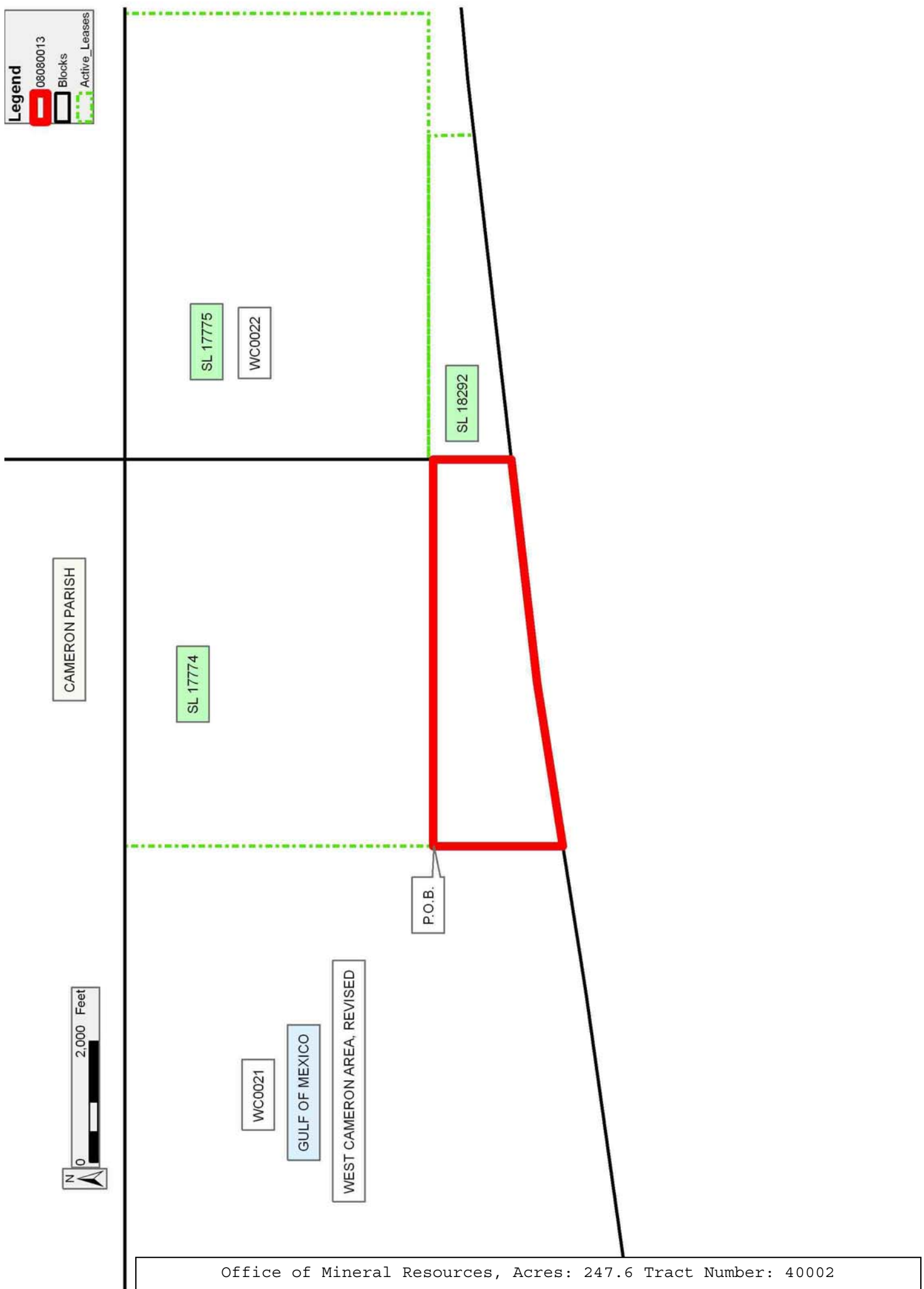
NOTE: The State of Louisiana does hereby reserve, and this lease shall be subject to, the imprescriptible right of surface use in the nature of a servitude in favor of the Department of Natural Resources, including its Offices and Commissions, for the sole purpose of implementing, constructing, servicing and maintaining approved coastal zone management and/or restoration projects. Utilization of any and all rights derived under this lease by the mineral lessee, its agents, successors or assigns, shall not interfere with nor hinder the reasonable surface use by the Department of Natural Resources, its Offices or Commissions, as herein above reserved.

Applicant: GRAY PRODUCTION COMPANY

Bidder	Cash Payment	Price/Acre	Rental	Oil	Gas	Other

Legend

- 08080013
- Blocks
- Active_Leases



CAMERON PARISH

SL 17774

SL 17775

WC0022

SL 18292

WC0021

GULF OF MEXICO

WEST CAMERON AREA, REVISED

P.O.B.



TRACT 40003 - Portion of Blocks 207, 212, 213, and 293, South Marsh Island Area, Iberia Parish, Louisiana

The beds and bottoms of all water bodies belonging to the State of Louisiana located in Blocks 207, 212, 213, and 293, South Marsh Island Area, together with any present lands formed by accretion to the shoreline or islands formed therein, located in Iberia Parish, Louisiana, owned by and not presently under mineral lease as of August 13, 2008, from the State of Louisiana, the geographical area of which is more fully described as follows: Beginning at the Northwest corner of State Lease No. 19499 having Coordinates of X = 1,780,211.00 and Y = 305,748.23; thence along the boundary of said State Lease No. 19499 the following courses: South 6,633.61 feet to a corner having Coordinates of X = 1,780,211.00 and Y = 299,114.62; East 5,581.00 feet to a corner having Coordinates of X = 1,785,792.00 and Y = 299,114.62 and North 52 degrees 51 minutes 03 seconds East 270.07 feet to a corner on the West boundary of State Lease No. 19514 having Coordinates of X = 1,786,007.26 and Y = 299,277.71; thence South 33 degrees 34 minutes 09 seconds West 195.74 feet along the West boundary of said State Lease No. 19514 to its Southwest corner, also being the Northwest corner of State Lease No. 19500 having Coordinates of X = 1,785,899.03 and Y = 299,114.62: thence South 33 degrees 34 minutes 08 seconds West 8,073.02 feet along the West boundary of said State Lease No. 19500 to its Southwest corner located on the Three Mile Line, as decreed by the Supreme Court of the United States, as determined by a Special Master appointed therein, in litigation styled *United States v. State of Louisiana et al No. 9 Original*, in 1975, having Coordinates of X = 1,781,435.14 and Y = 292,388.00; thence Northwesterly, along said Three Mile Line, along an arc to the right having a radius of 18,240.60 feet and a center having Coordinates of X = 1,791,584 and Y = 307,545 to a point on the East boundary of Parcel I, Lighthouse Point Field, State Lease No. 340, as amended, having Coordinates of X = 1,774,568.30 and Y = 300,972.34; thence along the boundary of said portion of State Lease No. 340 the following courses: North 48 degrees 50 minutes 58 seconds East 42.04 feet to a point having Coordinates of X = 1,774,599.96 and Y = 301,000.01; North 26 degrees 33 minutes 54 seconds East 447.21 feet to a point having Coordinates of X = 1,774,799.95 and Y = 301,400.00; North 09 degrees 27 minutes 44 seconds East 608.28 feet to a point having Coordinates of X = 1,774,899.95 and Y = 302,000.01; North 05 degrees 42 minutes 36 seconds East 335.00 feet to a point having Coordinates of X = 1,774,933.28 and Y = 302,333.34; North 14 degrees 02 minutes 12 seconds East 687.18 feet to a point having Coordinates of X = 1,775,099.95 and Y = 303,000.01; North 12 degrees 31 minutes 44 seconds East 921.95 feet to a point having Coordinates of X = 1,775,299.96 and Y = 303,900.00; North 18 degrees 26 minutes 06 seconds East 814.76 feet to a point having Coordinates of X = 1,775,557.61 and Y = 304,672.95; North 18 degrees 26 minutes 06 seconds East 766.38 feet to a point having Coordinates of X = 1,775,799.96 and Y = 305,400.00 and North 12 degrees 15 minutes 53 seconds East 356.36 feet to a point having Coordinates of X = 1,775,875.66 and Y = 305,748.23; thence East 4,335.34 feet to the point of beginning, containing approximately **1,659.63 acres**

, **LESS AND EXCEPT** that portion thereof, if any, lying seaward of the line three nautical miles from the coast line of Louisiana, as said three mile line has been decreed by the Supreme Court of the United States, as determined by a Special Master appointed therein, in litigation styled **United States v. State of Louisiana et al No. 9 Original**, in 1975, all as more particularly outlined on a plat in the Office of Mineral Resources, Department of Natural Resources. All bearings, distances and coordinates are based on the Louisiana Coordinate System of 1927, (South Zone).

NOTE: The above description of the Tract nominated for lease has been provided and corrected, where required, exclusively by the nomination party. Any mineral lease selected from this Tract and awarded by the Louisiana State Mineral Board shall be without warranty of any kind, either express, implied, or statutory, including, but not limited to, the implied warranties of merchantability and fitness for a particular purpose. Should the mineral lease awarded by the Louisiana State Mineral Board be subsequently modified, cancelled or abrogated due to the existence of conflicting leases, operating agreements, private claims or other future obligations or conditions which may affect all or any portion of the leased Tract, it shall not relieve the Lessee of the obligation to pay any bonus due thereon to the Louisiana State Mineral Board, nor shall the Louisiana State Mineral Board be obligated to refund any consideration paid by the Lessor prior to such modification, cancellation, or abrogation, including, but not limited to, bonuses, rentals and royalties.

NOTE: The acreage contained herein, being a portion of State Lease 335, 340 or 341, was subject to the litigation between Texas, Inc. and the State of Louisiana which resulted in the Global Settlement Agreement compromise whereby this acreage was reassigned through various mesne conveyances to the successors of William T. Burton, the original lessee of said leases from the State, (hereinafter otherwise referred to as the "ORRO's) and approved by the State Mineral Board, becoming effective April 25, 1994. Under separate agreement by and between the State and the ORRO's, certain obligations were to be met within a specified time frame or the ORRO's became obligated to release the reassigned acreage back to the State. The obligations were not met within the specified time frame and the State began securing the releases for the acreage contained herein. Due to the extremely large number of ORRO's, their nationwide and worldwide dispersal, the unreliability of available contact information and/or a present inability to obtain full, requisite cooperation, the State has, as yet, not secured releases from certain ORRO's representing approximately a .0258336 interest in this acreage. Accordingly, although the State is diligently pursuing the requisite releases affecting this acreage (the furnishing of which the ORRO's representing the stated decimal interest are obligated), nevertheless, a party obtaining a mineral lease from the State of Louisiana on the acreage contained herein shall do so with full knowledge that a complete release of all specific ORRO interest in this acreage has not as yet been secured and shall assume a business risk commensurate with the unsecured interest release.

NOTE: The Office of Mineral Resources will require a minimum bonus of \$300 per acre and a minimum royalty of 25%.

NOTE: The State of Louisiana does hereby reserve, and this lease shall be subject to, the imprescriptible right of surface use in the nature of a servitude in favor of the Department of Natural Resources, including its Offices and Commissions, for the sole purpose of implementing, constructing, servicing and maintaining approved coastal zone management and/or restoration projects. Utilization of any and all rights derived under this lease by the mineral lessee, its agents, successors or assigns, shall not interfere with nor hinder the reasonable surface use by the Department of Natural Resources, its Offices or Commissions, as herein above reserved.

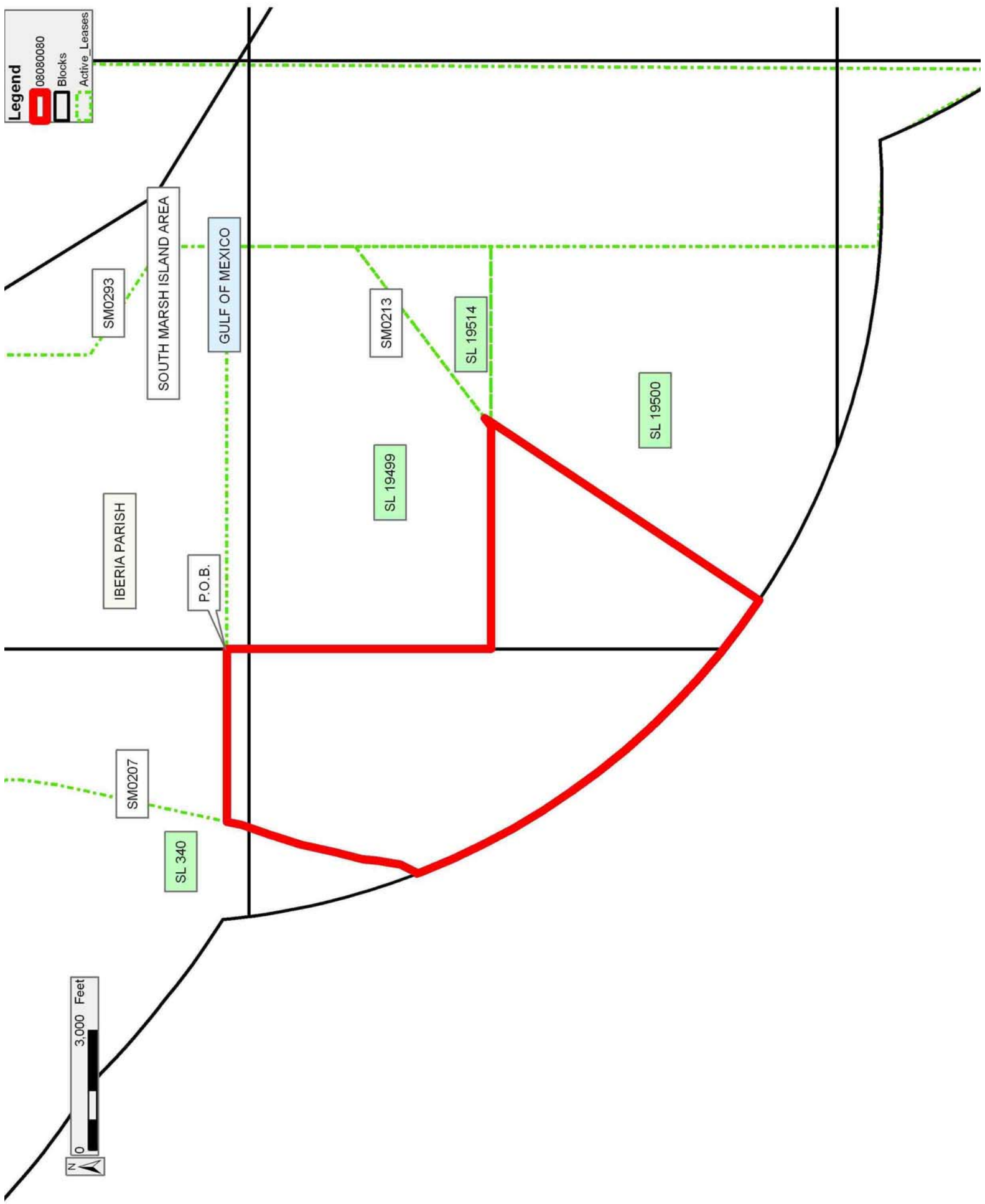
NOTE: The Department of Wildlife and Fisheries has designated certain areas in the coastal waters of the State of Louisiana as Oyster Seed Bed Areas. The exact location of those Seed Bed Areas must be obtained from the Department of Wildlife and Fisheries and any work done under a mineral lease from the State of Louisiana may necessarily be conducted in conformity with the rules and regulations promulgated by the said Department of Wildlife and Fisheries for Oyster Seed Bed Areas.

Applicant: THEOPHILUS OIL, GAS & LAND SERVICES, LLC

Bidder	Cash Payment	Price/Acre	Rental	Oil	Gas	Other

Legend

- 08080080
- Blocks
- Active_Leases



TRACT 40004 - Portion of Block 67, Ship Shoal Area, Terrebonne Parish, Louisiana

The beds and bottoms of all water bodies belonging to the State of Louisiana located in Block 67, Ship Shoal Area, together with any present lands formed by accretion to the shoreline or islands formed therein, located in Terrebonne Parish, Louisiana, owned by and not presently under mineral lease as of August 13, 2008, from the State of Louisiana, the geographical area of which is more fully described as follows: Beginning at a point on the North line of Block 67, Ship Shoal Area, and the South Line of Block 43, Ship Shoal Area, having Coordinates of X = 2,178,335.00 and Y = 130,197.05; thence North 89 degrees 59 minutes 16 seconds East 1,815.00 feet to a point on the North line of said Block 67 and the Southwest corner of State Lease No. 16558 having Coordinates of X = 2,180,150.00 and Y = 130,197.44; thence East 2,017.42 feet along the boundary of said State Lease No. 16558 to its Southeast corner having Coordinates of X = 2,182,167.42 and Y = 130,197.44; thence South 89 degrees 50 minutes 00 seconds East 2,607.33 feet to a point on the North line of said Block 67 and the Northwest corner of State Lease No. 18699 having Coordinates of X = 2,184,774.74 and Y = 130,189.86; thence South 3,992.36 feet along the West boundary line of said State Lease No. 18699 to its Southwest corner and also the Northwest corner of State Lease No. AO 0285 having Coordinates of X = 2,184,774.74 and Y = 126,197.50; thence South 00 degrees 17 minutes 29 seconds East 1,634.08 feet to a point on the West boundary line of said State Lease No. AO 0285 also the Northeast corner of State Lease No. 18698 having Coordinates of X = 2,184,783.05 Y = 124,563.45; thence along the boundary of said State Lease No. 18698 the following courses: West 2,000.00 feet and South 7,425.41 to a point on the Three Mile Line, as decreed by the Supreme Court of the United States, as determined by a Special Master appointed therein, in litigation styled *United States v. State of Louisiana et al No. 9 Original*, in 1975, having Coordinates of X = 2,182,783.05 and Y = 117,138.04; thence on the boundaries of said Three Mile Line the following courses: Northwesterly on a arc having a radius of 18,240.60 feet and a center at X = 2,182,166 and Y = 135,368 to a point having Coordinates of X = 2,181,100 and Y = 117,159; Northwesterly on a straight line to a point having Coordinates of X = 2,179,579 and Y = 117,248; Northwesterly on an arc having a radius of 18,240.60 feet and a center at X = 2,180,645 and Y = 135,457 to a point having Coordinates of X = 2,178,500.00 and Y = 117,342.91; thence North 3,228.86 feet to a point on the South boundary line of State Lease No. 17309 having Coordinates of X = 2,178,500.00 and Y = 120,571.77; thence North 47 degree 07 minutes 16 seconds East 438.29 feet to a point on the South boundary line of said State Lease No. 17309 and the Southwest corner of State Lease No. 19433 having Coordinates of X = 2,178,821.17 and Y = 120,870.00; thence along the boundaries of State Lease No. 19433 the following courses: East 2,278.83 feet, North 6,030.00 feet, West 1,920.00 and South 52 degrees 25 minutes 53 seconds West 1,066.08 feet to a point having Coordinates of X = 2,178,335.00 and Y = 126,250.00; thence North 3,947.05 to the point of beginning, containing approximately **1,193.42 acres, LESS AND EXCEPT** that portion thereof, if any, lying seaward of the

line three nautical miles from the coast line of Louisiana, as said three mile line has been decreed by the Supreme Court of the United States, as determined by a Special Master appointed therein, in litigation styled **United States v. State of Louisiana et al No. 9 Original**, in 1975, all as more particularly outlined on a plat in the Office of Mineral Resources, Department of Natural Resources. All bearings, distances and coordinates are based on the Louisiana Coordinate System of 1927, (South Zone).

NOTE: The above description of the Tract nominated for lease has been provided and corrected, where required, exclusively by the nomination party. Any mineral lease selected from this Tract and awarded by the Louisiana State Mineral Board shall be without warranty of any kind, either express, implied, or statutory, including, but not limited to, the implied warranties of merchantability and fitness for a particular purpose. Should the mineral lease awarded by the Louisiana State Mineral Board be subsequently modified, cancelled or abrogated due to the existence of conflicting leases, operating agreements, private claims or other future obligations or conditions which may affect all or any portion of the leased Tract, it shall not relieve the Lessee of the obligation to pay any bonus due thereon to the Louisiana State Mineral Board, nor shall the Louisiana State Mineral Board be obligated to refund any consideration paid by the Lessor prior to such modification, cancellation, or abrogation, including, but not limited to, bonuses, rentals and royalties.

NOTE: The State of Louisiana does hereby reserve, and this lease shall be subject to, the imprescriptible right of surface use in the nature of a servitude in favor of the Department of Natural Resources, including its Offices and Commissions, for the sole purpose of implementing, constructing, servicing and maintaining approved coastal zone management and/or restoration projects. Utilization of any and all rights derived under this lease by the mineral lessee, its agents, successors or assigns, shall not interfere with nor hinder the reasonable surface use by the Department of Natural Resources, its Offices or Commissions, as herein above reserved.

NOTE: The Department of Wildlife and Fisheries has designated certain areas in the coastal waters of the State of Louisiana as Oyster Seed Bed Areas. The exact location of those Seed Bed Areas must be obtained from the Department of Wildlife and Fisheries and any work done under a mineral lease from the State of Louisiana may necessarily be conducted in conformity with the rules and regulations promulgated by the said Department of Wildlife and Fisheries for Oyster Seed Bed Areas.

Applicant: REAGAN ENERGY SERVICES, LLC

Bidder	Cash Payment	Price/Acre	Rental	Oil	Gas	Other

Legend

- 08080021
- Blocks
- Active_Leases

TERREBONNE PARISH
 SOUTH TIMBALIER AREA, REVISED
 GULF OF MEXICO

ST0007
 SOUTH PELTO AREA
 PL0001

SL 18699
 AO 0285

SL 16558

SL 18698

SS0043
 P.O.B.

SL 19433

SL 17309

SHIP SHOAL AREA
 SS0067



TRACT 40005 - Portion of Block 67, Ship Shoal Area, Terrebonne Parish, Louisiana

The beds and bottoms of all water bodies belonging to the State of Louisiana located in Block 67, Ship Shoal Area, together with any present lands formed by accretion to the shoreline or islands formed therein, located in Terrebonne Parish, Louisiana, owned by and not presently under mineral lease as of August 13, 2008, from the State of Louisiana, the geographical area of which is more fully described as follows: Beginning at the Northwest Corner of Block 67, and the Southwest Corner of Block 43, Ship Shoal Area, having Coordinates of X = 2,171,600.00 and Y = 130,197.00; thence North 89 degrees 59 minutes 59 second East 6,735.00 feet to a point having Coordinates of X = 2,178,335.00 and Y = 130,197.05; thence South 3,947.05 feet to the Western most point of State Lease No. 19433 having Coordinates of X = 2,178,335.00 and Y = 126,250.00; thence South 20 degrees 46 minutes 02 seconds East 747.38 feet to a point that intersects with State Lease No. 19433 and the Northwest corner of State Lease No. 17309 having Coordinates of X = 2,178,600.00 and Y = 125,551.18; thence along the boundaries of said State Lease No. 17309 the following courses: South 929.41 feet, South 28 degrees 47 minutes 12 seconds West 5,191.58 feet, South 51 degrees 20 minutes 24 seconds East 1,280.63 feet and North 47 degrees 07 minutes 16 seconds East 1,910.50 feet to a point on its Southeast line having Coordinates X = 217,985.00 and Y = 120,571.77; thence South 3,228.86 feet to a point on the Three Mile Line, as decreed by the Supreme Court of the United States, as determined by a Special Master appointed therein, in litigation styled *United States v. State of Louisiana et al No. 9 Original*, in 1975, having Coordinates of X = 2,178,500.00 and Y = 117,342.91; thence Northwesterly on an arc having a radius of 18,240.60 feet and a center at X = 2,180,645 and Y = 135,457 to a point having Coordinates X = 2,177,979 and Y = 117,412; thence Southwesterly on straight line to a point having Coordinates of X = 2,172,700 and Y = 117,308; thence Southwesterly on a straight line to a point having Coordinates of X = 2,171,638 and Y = 117,082; thence Southwesterly on an arc having a radius of 18,240.60 feet and a center at X = 2,167,836 and Y = 134,922 to a point on the West line of said Block 67 and the Southeast corner of State Lease No. 14689, having Coordinates of X = 2,171,600.00 and Y = 117,073.98; thence North 2,623.46 feet to the Northeast corner of said State Lease No. 14689 having Coordinates of X = 2,171,600.00 and Y = 119,697.44; thence North 10,499.56 feet along the West Line of said Block 67 to the point of beginning, containing approximately **1,890.02 acres, LESS AND EXCEPT** that portion thereof, if any, lying seaward of the line three nautical miles from the coast line of Louisiana, as said three mile line has been decreed by the Supreme Court of the United States, as determined by a Special Master appointed therein, in litigation styled **United States v. State of Louisiana et al No. 9 Original**, in 1975, all as more particularly outlined on a plat in the Office of Mineral Resources, Department of Natural Resources. All bearings, distances and coordinates are based on the Louisiana Coordinate System of 1927, (South Zone).

NOTE: The above description of the Tract nominated for lease has been provided and corrected, where required, exclusively by the nomination party. Any mineral lease selected from this Tract and awarded by the Louisiana State Mineral Board shall be without warranty of any kind, either express, implied, or statutory, including, but not limited to, the implied warranties of merchantability and fitness for a particular purpose. Should the mineral lease awarded by the Louisiana State Mineral Board be subsequently modified, cancelled or abrogated due to the existence of conflicting leases, operating agreements, private claims or other future obligations or conditions which may affect all or any portion of the leased Tract, it shall not relieve the Lessee of the obligation to pay any bonus due thereon to the Louisiana State Mineral Board, nor shall the Louisiana State Mineral Board be obligated to refund any consideration paid by the Lessor prior to such modification, cancellation, or abrogation, including, but not limited to, bonuses, rentals and royalties.

NOTE: The State of Louisiana does hereby reserve, and this lease shall be subject to, the imprescriptible right of surface use in the nature of a servitude in favor of the Department of Natural Resources, including its Offices and Commissions, for the sole purpose of implementing, constructing, servicing and maintaining approved coastal zone management and/or restoration projects. Utilization of any and all rights derived under this lease by the mineral lessee, its agents, successors or assigns, shall not interfere with nor hinder the reasonable surface use by the Department of Natural Resources, its Offices or Commissions, as herein above reserved.

NOTE: The Department of Wildlife and Fisheries has designated certain areas in the coastal waters of the State of Louisiana as Oyster Seed Bed Areas. The exact location of those Seed Bed Areas must be obtained from the Department of Wildlife and Fisheries and any work done under a mineral lease from the State of Louisiana may necessarily be conducted in conformity with the rules and regulations promulgated by the said Department of Wildlife and Fisheries for Oyster Seed Bed Areas.

Applicant: REAGAN ENERGY SERVICES, LLC

Bidder	Cash Payment	Price/Acre	Rental	Oil	Gas	Other

Legend

- 08080020
- Blocks
- Active_Leases

