

TRACT 39337 - Portion of Blocks 117, 118, 120, and 121, South Timbalier Area, Revised, Terrebonne Parish, Louisiana

All of the lands now or formerly constituting the beds and bottoms of all water bodies of every nature and description as to which title is vested in the State of Louisiana, together with all islands arising therein and other lands formed by accretion or by reliction, where allowed by law, excepting tax adjudicated lands, and not presently under mineral lease on August 8, 2007, situated in Terrebonne Parish, Louisiana, and more particularly described as follows: Beginning at a point within Block 120, South Timbalier Area, Revised, having Coordinates of X = 2,241,084.02 and Y = 157,720.60; thence North 2,742.20 feet to a point on the North line of said Block 120, also being a point on the South line of Block 118, South Timbalier Area, Revised having Coordinates of X = 2,241,084.02 and Y = 160,462.80; thence North 6,564.89 feet to a point having Coordinates of X = 2,241,084.02 and Y = 167,027.69; thence East 1,205.86 feet to a point on the East line of said Block 118, also being a point on the West line of Block 117, South Timbalier Area, Revised, having Coordinates of X = 2,242,289.88 and Y = 167,027.69; thence East 7,019.16 feet to the Westernmost Northwest corner of State Lease No. 2856, as amended, having Coordinates of X = 2,249,309.04 and Y = 167,027.69; thence along the boundary of said State Lease No. 2856 the following courses: South 3,750.00 feet to a point having Coordinates of X = 2,249,309.04 and Y = 163,277.69; East 450.00 feet to a point having Coordinates of X = 2,249,759.04 and Y = 163,277.69; South 2,814.89 feet to a point having Coordinates of X = 2,249,759.04 and Y = 160,462.80 and East 2,752.27 feet to a point on the South boundary of said State Lease No. 2856, also being the Northwest corner of State Lease No. 2857, as amended, having Coordinates of X = 2,252,511.31 and Y = 160,462.80; thence along the boundary of said State Lease No. 2857 the following courses: South 06 degrees 13 minutes 17 seconds West 1,119.39 feet to a point having Coordinates of X = 2,252,390.00 and Y = 159,350.00; South 03 degrees 48 minutes 50 seconds East 451.00 feet to a point having Coordinates of X = 2,252,420.00 and Y = 158,900.00; South 08 degrees 44 minutes 46 seconds East 328.82 feet to a point having Coordinates of X = 2,252,470.00 and Y = 158,575.00 and South 13 degrees 41 minutes 33 seconds East 879.40 feet to a point having Coordinates of X = 2,252,678.16 and Y = 157,720.60; thence West 10,388.28 feet to a point on the West line of Block 121, South Timbalier Area, Revised, also being a point on the East line of said Block 120 having Coordinates of X = 2,242,289.88 and Y = 157,720.60; thence West 1,205.86 feet to the point of beginning, containing approximately **1,986.13 acres**, all as more particularly outlined on a plat on file in the Office of Mineral Resources, Department of Natural Resources. All bearings, distances and coordinates are based on Louisiana Coordinate System of 1927, (North or South Zone), where applicable.

NOTE: The above description of the Tract nominated for lease has been provided and corrected, where required, exclusively by the nomination party. Any mineral lease selected from this Tract and awarded by the Louisiana State Mineral Board shall be without warranty of any kind,

either express, implied, or statutory, including, but not limited to, the implied warranties of merchantability and fitness for a particular purpose. Should the mineral lease awarded by the Louisiana State Mineral Board be subsequently modified, cancelled or abrogated due to the existence of conflicting leases, operating agreements, private claims or other future obligations or conditions which may affect all or any portion of the leased Tract, it shall not relieve the Lessee of the obligation to pay any bonus due thereon to the Louisiana State Mineral Board, nor shall the Louisiana State Mineral Board be obligated to refund any consideration paid by the Lessor prior to such modification, cancellation, or abrogation, including, but not limited to, bonuses, rentals and royalties.

NOTE: The State of Louisiana does hereby reserve, and this lease shall be subject to, the imprescriptible right of surface use in the nature of a servitude in favor of the Department of Natural Resources, including its Offices and Commissions, for the sole purpose of implementing, constructing, servicing and maintaining approved coastal zone management and/or restoration projects. Utilization of any and all rights derived under this lease by the mineral lessee, its agents, successors or assigns, shall not interfere with nor hinder the reasonable surface use by the Department of Natural Resources, its Offices or Commissions, as herein above reserved.

NOTE: It appears, according to our records, that a portion of this Tract is located within the restrictive safety fairway area as set out by the Corps of Engineers, U.S. Army and/or the restrictive anchorage area as set out by the U.S. Coast Guard.

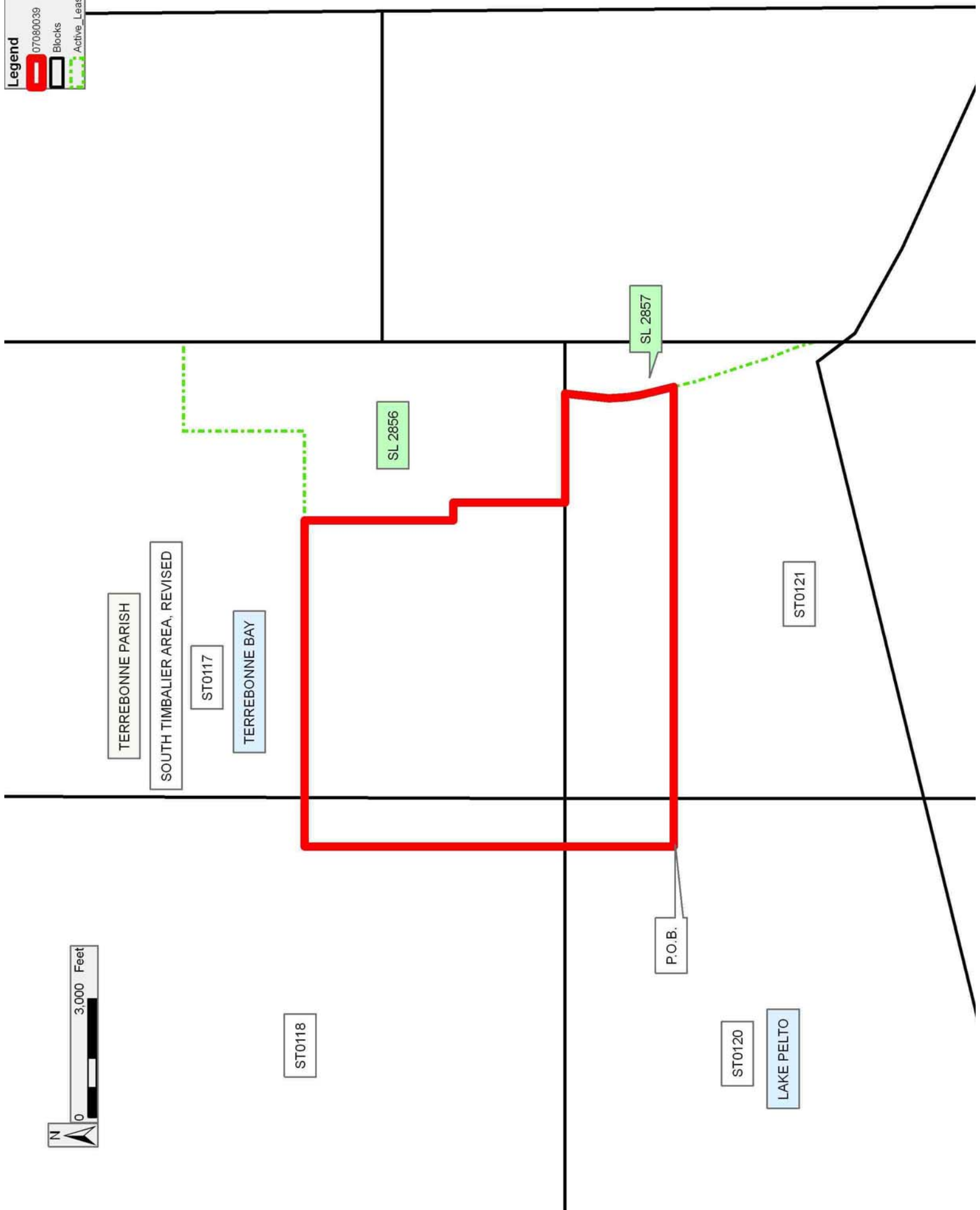
NOTE: The Department of Wildlife and Fisheries has designated certain areas in the coastal waters of the State of Louisiana as Oyster Seed Bed Areas. The exact location of those Seed Bed Areas must be obtained from the Department of Wildlife and Fisheries and any work done under a mineral lease from the State of Louisiana may necessarily be conducted in conformity with the rules and regulations promulgated by the said Department of Wildlife and Fisheries for Oyster Seed Bed Areas.

Applicant: LAND MANAGEMENT SERVICES, L.L.C.

Bidder	Cash Payment	Price/Acre	Rental	Oil	Gas	Other

Legend

- 07080039
- Blocks
- Active_Leases



TRACT 39338 - Portion of Blocks 120, 121, and 122, South Timbalier Area, Revised, Terrebonne Parish, Louisiana

All of the lands now or formerly constituting the beds and bottoms of all water bodies of every nature and description as to which title is vested in the State of Louisiana, together with all islands arising therein and other lands formed by accretion or by reliction, where allowed by law, excepting tax adjudicated lands, and not presently under mineral lease on August 8, 2007, situated in Terrebonne Parish, Louisiana, and more particularly described as follows: Beginning at a point within Block 120, South Timbalier Area, Revised, having Coordinates of X = 2,241,084.02 and Y = 157,720.60; thence East 1,205.86 feet to a point on the East line of said Block 120, also being a point on the West line of Block 121, South Timbalier Area, Revised, having Coordinates of X = 2,242,289.88 and Y = 157,720.60; thence East 10,388.28 feet to a point on the West boundary of State Lease No. 2857, as amended, having Coordinates of X = 2,252,678.16 and Y = 157,720.60; thence along the boundary of said State Lease No. 2857 the following courses: South 13 degrees 41 minutes 33 seconds East 535.82 feet to a point having Coordinates of X = 2,252,805.00 and Y = 157,200.00; South 17 degrees 42 minutes 12 seconds East 1,857.99 feet to a point having Coordinates of X = 2,253,370.00 and Y = 155,430.00; South 20 degrees 20 minutes 38 seconds East 949.21 feet to a point having Coordinates of X = 2,253,700.00 and Y = 154,540.00 and South 15 degrees 47 minutes 40 seconds East 396.93 feet to the Southernmost corner of said State Lease No. 2857, also being a point on the East line of said Block 121, also being a point on the West boundary of State Lease No. 1249, as amended, having Coordinates of X = 2,253,808.04 and Y = 154,158.06; thence along the boundary of said State Lease No. 1249 the following courses: South 119.64 feet to a point having Coordinates of X = 2,253,808.04 and Y = 154,038.42; East 20.42 feet to a point having Coordinates of X = 2,253,828.46 and Y = 154,038.42 and South 09 degrees 41 minutes 15 seconds East 810.35 feet to a point on the Louisiana Coastline, as decreed by the Supreme Court of the United States, as determined by a Special Master appointed therein, in litigation styled *United States v. State of Louisiana et al No. 9 Original*, in 1975, having Coordinates of X = 2,253,964.83 and Y = 153,239.62; thence along said Louisiana Coastline the following courses: Northwesterly on a straight line to a point on the West line of Block 122, South Timbalier Area, Revised, also being a point on the East line of said Block 121 having Coordinates of X = 2,253,808.04 and Y = 153,444.85; Northwesterly on a straight line to a point having Coordinates of X = 2,253,306 and Y = 154,102; Southwesterly on a straight line to a point on the West line of said Block 121, also being a point on the East line of said Block 120 having Coordinates of X = 2,242,289.88 and Y = 151,413.40 and Southwesterly on a straight line to a point having Coordinates of X = 2,241,084.02 and Y = 151,119.09; thence North 6,601.50 feet to the point of beginning, containing approximately **1,432.44 acres**, all as more particularly outlined on a plat on file in the Office of Mineral Resources, Department of Natural Resources. All bearings, distances and coordinates are based on Louisiana Coordinate System of 1927, (North or South Zone), where applicable.

NOTE: The above description of the Tract nominated for lease has been provided and corrected, where required, exclusively by the nomination party. Any mineral lease selected from this Tract and awarded by the Louisiana State Mineral Board shall be without warranty of any kind, either express, implied, or statutory, including, but not limited to, the implied warranties of merchantability and fitness for a particular purpose. Should the mineral lease awarded by the Louisiana State Mineral Board be subsequently modified, cancelled or abrogated due to the existence of conflicting leases, operating agreements, private claims or other future obligations or conditions which may affect all or any portion of the leased Tract, it shall not relieve the Lessee of the obligation to pay any bonus due thereon to the Louisiana State Mineral Board, nor shall the Louisiana State Mineral Board be obligated to refund any consideration paid by the Lessor prior to such modification, cancellation, or abrogation, including, but not limited to, bonuses, rentals and royalties.

NOTE: The State of Louisiana does hereby reserve, and this lease shall be subject to, the imprescriptible right of surface use in the nature of a servitude in favor of the Department of Natural Resources, including its Offices and Commissions, for the sole purpose of implementing, constructing, servicing and maintaining approved coastal zone management and/or restoration projects. Utilization of any and all rights derived under this lease by the mineral lessee, its agents, successors or assigns, shall not interfere with nor hinder the reasonable surface use by the Department of Natural Resources, its Offices or Commissions, as herein above reserved.

NOTE: It appears, according to our records, that a portion of this Tract is located within the restrictive safety fairway area as set out by the Corps of Engineers, U.S. Army and/or the restrictive anchorage area as set out by the U.S. Coast Guard.

NOTE: The Department of Wildlife and Fisheries has designated certain areas in the coastal waters of the State of Louisiana as Oyster Seed Bed Areas. The exact location of those Seed Bed Areas must be obtained from the Department of Wildlife and Fisheries and any work done under a mineral lease from the State of Louisiana may necessarily be conducted in conformity with the rules and regulations promulgated by the said Department of Wildlife and Fisheries for Oyster Seed Bed Areas.

Applicant: LAND MANAGEMENT SERVICES, L.L.C.

Bidder	Cash Payment	Price/Acre	Rental	Oil	Gas	Other

Legend

- 07080038
- Blocks
- Active_Leases

