

TRACT 39327 - Portion of Blocks 31, 32, 33, and 34, Breton Sound Area, Plaquemines Parish, Louisiana

All of the lands now or formerly constituting the beds and bottoms of all water bodies of every nature and description as to which title is vested in the State of Louisiana, together with all islands arising therein and other lands formed by accretion or by reliction, where allowed by law, excepting tax adjudicated lands, and not presently under mineral lease on August 8, 2007, situated in Plaquemines Parish, Louisiana, and more particularly described as follows: Beginning at a point within Block 32, Breton Sound Area, also being the Northeast corner of State Lease No. 1227, as amended, having Coordinates of X = 2,646,600.00 and Y = 331,422.00; thence East 10,875.00 feet to a point within Block 31, Breton Sound Area, having Coordinates of X = 2,657,475.00 and Y = 331,422.00; thence South 5,092.00 feet to the Northeast corner of State Lease No. 4407, as amended, having Coordinates of X = 2,657,475.00 and Y = 326,330.00; thence along the boundary of said State Lease No. 4407 the following courses: West 7,375.00 feet to a point having Coordinates of X = 2,650,100.00 and Y = 326,330.00; South 4,000.00 feet to a point having Coordinates of X = 2,650,100.00 and Y = 322,330.00 and East 996.66 feet to the Northwest corner of State Lease No. 4458, as amended, having Coordinates of X = 2,651,096.66 and Y = 322,330.00; thence along the boundary of said State Lease No. 4458 the following courses: South 2,475.49 feet to a point; South 00 degrees 13 minutes 26 seconds East 524.51 feet to its Southwest corner and East 2,101.29 feet to a point on its South boundary; thence South 2,114.46 feet to a point on the North boundary of State Lease No. 14217, as amended, having Coordinates of X = 2,653,200.00 and Y = 317,215.54; thence West 3,100.00 feet along the North boundary of said State Lease No. 14217 to its Northwest corner having Coordinates of X = 2,650,100.00 and Y = 317,215.54; thence South 82 degrees 51 minutes 30 seconds West 1,830.20 feet to a point within Block 33, Breton Sound Area, also being the Southeast corner of State Lease No. 19078 having Coordinates of X = 2,648,284.00 and Y = 316,988.00; thence along the boundary of said State Lease No. 19078 the following courses: North 59 degrees 47 minutes 30 seconds East 1,625.78 feet to a point having Coordinates of X = 2,649,689.00 and Y = 317,806.00; North 664.00 feet to a point having Coordinates of X = 2,649,689.00 and Y = 318,470.00 and North 61 degrees 34 minutes 26 seconds West 3,512.50 feet to a point having Coordinates of X = 2,646,600.00 and Y = 320,142.04; thence North 5,875.46 feet to the Southeast corner of said State Lease No. 1227 having Coordinates of X = 2,646,600.00 and Y = 326,017.50; thence North 5,404.50 feet along the East boundary of said State Lease No. 1227 to the point of beginning, containing approximately **2,085.07 acres**, all as more particularly outlined on a plat on file in the Office of Mineral Resources, Department of Natural Resources. All bearings, distances and coordinates are based on Louisiana Coordinate System of 1927, (North or South Zone), where applicable.

NOTE: The above description of the Tract nominated for lease has been provided and corrected, where required, exclusively by the nomination

party. Any mineral lease selected from this Tract and awarded by the Louisiana State Mineral Board shall be without warranty of any kind, either express, implied, or statutory, including, but not limited to, the implied warranties of merchantability and fitness for a particular purpose. Should the mineral lease awarded by the Louisiana State Mineral Board be subsequently modified, cancelled or abrogated due to the existence of conflicting leases, operating agreements, private claims or other future obligations or conditions which may affect all or any portion of the leased Tract, it shall not relieve the Lessee of the obligation to pay any bonus due thereon to the Louisiana State Mineral Board, nor shall the Louisiana State Mineral Board be obligated to refund any consideration paid by the Lessor prior to such modification, cancellation, or abrogation, including, but not limited to, bonuses, rentals and royalties.

NOTE: The State of Louisiana does hereby reserve, and this lease shall be subject to, the imprescriptible right of surface use in the nature of a servitude in favor of the Department of Natural Resources, including its Offices and Commissions, for the sole purpose of implementing, constructing, servicing and maintaining approved coastal zone management and/or restoration projects. Utilization of any and all rights derived under this lease by the mineral lessee, its agents, successors or assigns, shall not interfere with nor hinder the reasonable surface use by the Department of Natural Resources, its Offices or Commissions, as herein above reserved.

Applicant: CYPRESS ENERGY CORPORATION

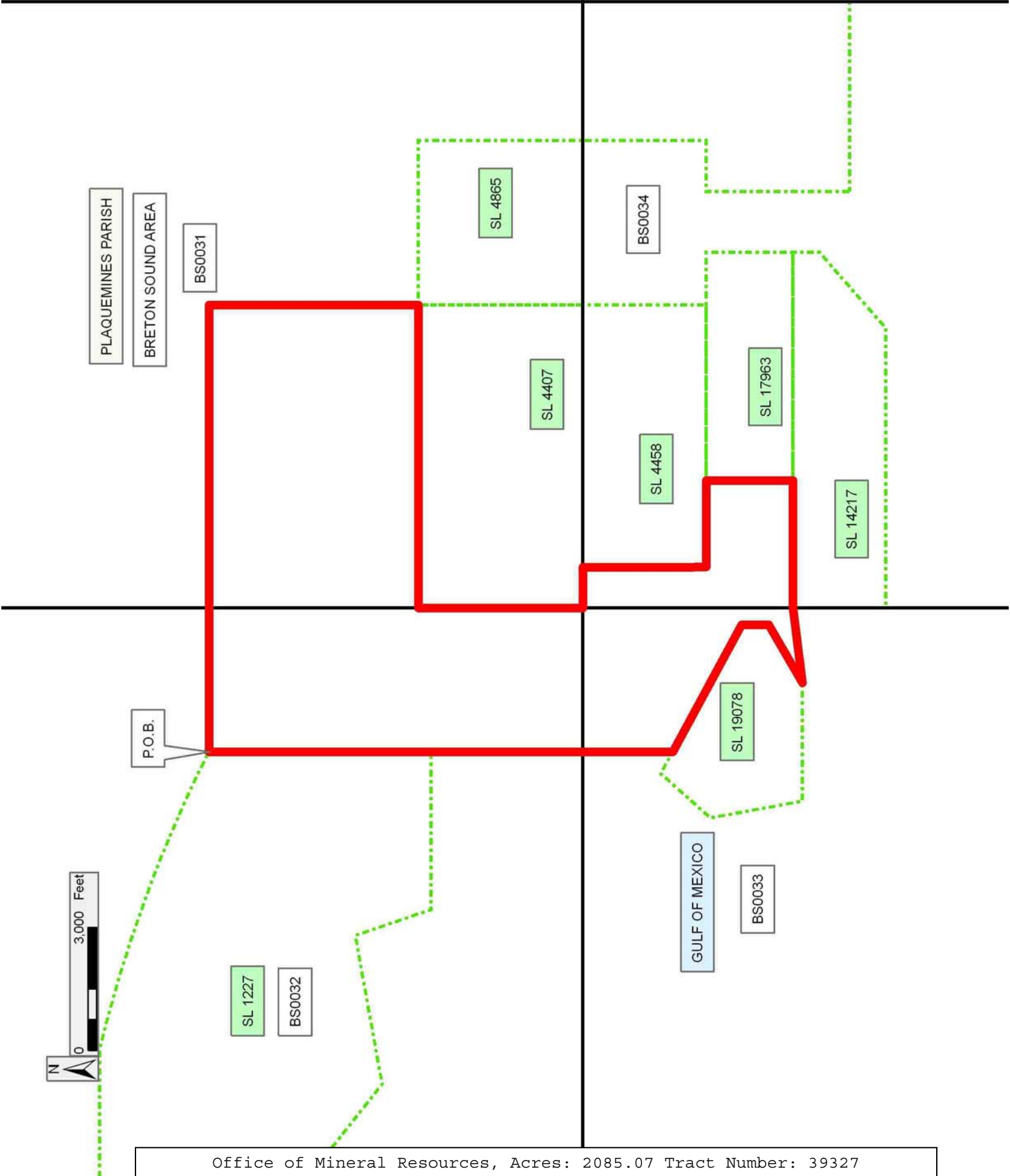
Bidder	Cash Payment	Price/ Acre	Rental	Oil	Gas	Other

Legend

07080009

Blocks

Active_Leases



TRACT 39328 - Portion of Block 32, Breton Sound Area, Blocks 21, and 26, Main Pass Area, Revised, Plaquemines Parish, Louisiana

All of the lands now or formerly constituting the beds and bottoms of all water bodies of every nature and description as to which title is vested in the State of Louisiana, together with all islands arising therein and other lands formed by accretion or by reliction, where allowed by law, excepting tax adjudicated lands, and not presently under mineral lease on August 8, 2007, situated in Plaquemines Parish, Louisiana, and more particularly described as follows: Beginning at a point within Block 21, Main Pass Area, Revised, also being a point on the South boundary of State Lease No. 15536 having Coordinates of X = 2,630,883.00 and Y = 327,678.00; thence along the boundary of said State Lease No. 15536 the following courses: East 1,585.00 feet to a point having Coordinates of X = 2,632,468.00 and Y = 327,678.00 and North 13 degrees 38 minutes 58 seconds West 2,188.41 feet to its Easternmost Northeast corner, also being a point on the Southern boundary of State Lease No. 4708, as amended, having Coordinates of X = 2,631,951.58 and Y = 329,804.60; thence along the boundary of said State Lease No. 4708 the following courses: South 75 degrees 57 minutes 50 seconds East 513.74 feet to a point having Coordinates of X = 2,632,449.98 and Y = 329,680.00; East 500.00 feet to a point having Coordinates of X = 2,632,949.98 and Y = 329,680.00 and North 85 degrees 14 minutes 11 seconds East 2,408.33 feet to its Southeast corner, also being a point on the West boundary of State Lease No. 1227, as amended, having Coordinates of X = 2,635,350.00 and Y = 329,880.00; thence along the boundary of said State Lease No. 1227 the following courses: South 160.85 feet to a point having Coordinates of X = 2,635,350.00 and Y = 329,719.15; South 51 degrees 38 minutes 28 seconds East 4,053.17 feet to a point having Coordinates of X = 2,638,528.25 and Y = 327,203.82; North 79 degrees 45 minutes 24 seconds East 3,665.49 feet to a point having Coordinates of X = 2,642,135.31 and Y = 327,855.65 and South 18 degrees 56 minutes 07 seconds East 1,943.31 feet to its Southernmost Southwest corner having Coordinates of X = 2,642,765.92 and Y = 326,017.50; thence South 3,687.50 feet to a point on the South line of Block 32, Breton Sound Area, having Coordinates of X = 2,642,765.92 and Y = 322,330.00; thence West 9,695.92 feet to a point on the North line of Block 26, Main Pass Area, Revised, having Coordinates of X = 2,633,070.00 and Y = 322,330.00; thence South 510.00 feet to the Northeast corner of State Lease No. 16935 having Coordinates of X = 2,633,070.00 and Y = 321,820.00; thence West 2,187.00 feet along the North boundary of said State Lease No. 16935 to its Northwest corner having Coordinates of X = 2,630,883.00 and Y = 321,820.00; thence North 5,858.00 feet to the point of beginning, containing approximately **1,668.47 acres**, all as more particularly outlined on a plat on file in the Office of Mineral Resources, Department of Natural Resources. All bearings, distances and coordinates are based on Louisiana Coordinate System of 1927, (North or South Zone), where applicable.

NOTE: The above description of the Tract nominated for lease has been provided and corrected, where required, exclusively by the nomination

party. Any mineral lease selected from this Tract and awarded by the Louisiana State Mineral Board shall be without warranty of any kind, either express, implied, or statutory, including, but not limited to, the implied warranties of merchantability and fitness for a particular purpose. Should the mineral lease awarded by the Louisiana State Mineral Board be subsequently modified, cancelled or abrogated due to the existence of conflicting leases, operating agreements, private claims or other future obligations or conditions which may affect all or any portion of the leased Tract, it shall not relieve the Lessee of the obligation to pay any bonus due thereon to the Louisiana State Mineral Board, nor shall the Louisiana State Mineral Board be obligated to refund any consideration paid by the Lessor prior to such modification, cancellation, or abrogation, including, but not limited to, bonuses, rentals and royalties.

NOTE: The State of Louisiana does hereby reserve, and this lease shall be subject to, the imprescriptible right of surface use in the nature of a servitude in favor of the Department of Natural Resources, including its Offices and Commissions, for the sole purpose of implementing, constructing, servicing and maintaining approved coastal zone management and/or restoration projects. Utilization of any and all rights derived under this lease by the mineral lessee, its agents, successors or assigns, shall not interfere with nor hinder the reasonable surface use by the Department of Natural Resources, its Offices or Commissions, as herein above reserved.

Applicant: CYPRESS ENERGY CORPORATION

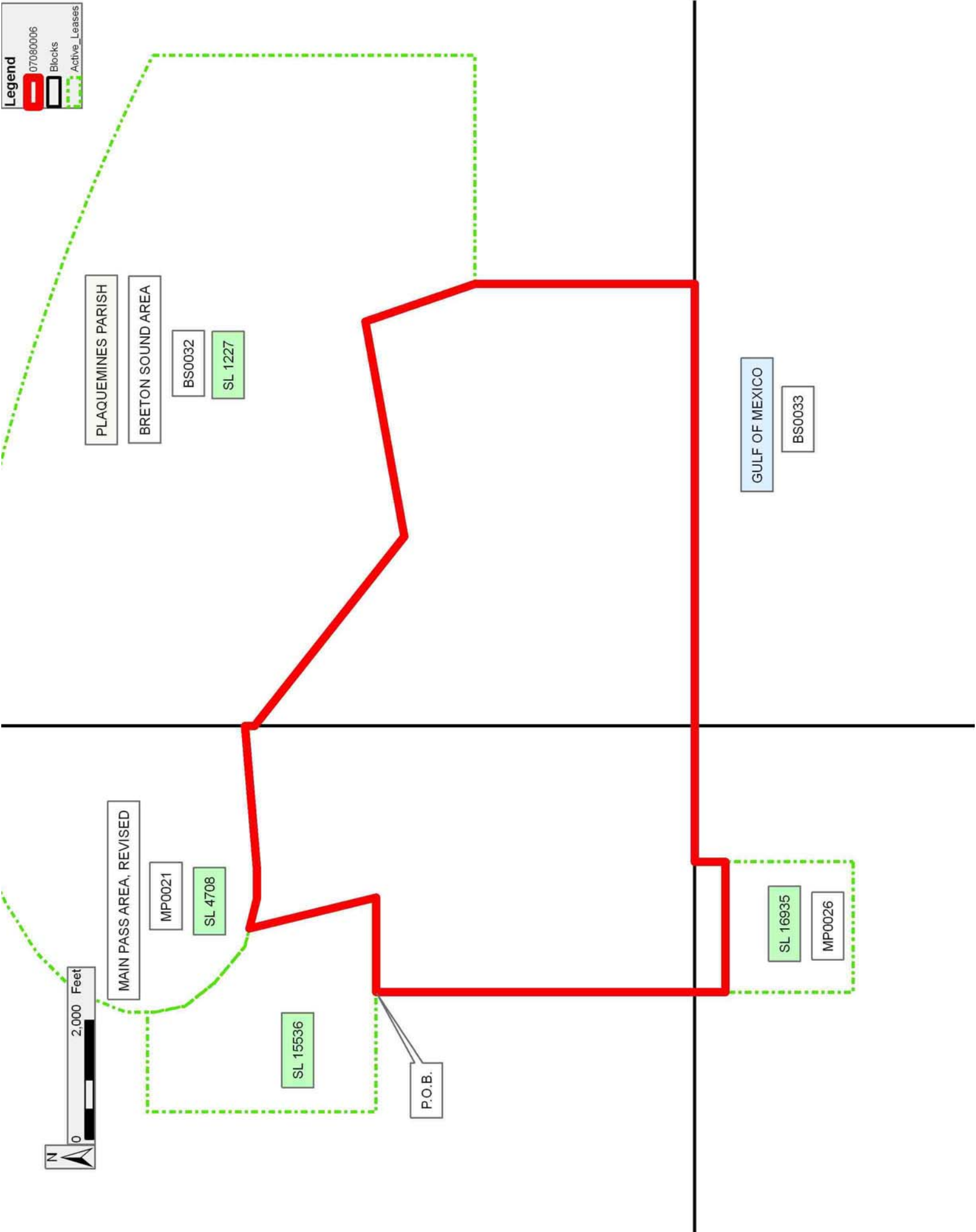
Bidder	Cash Payment	Price/ Acre	Rental	Oil	Gas	Other

Legend

07080006

Blocks

Active_Leases



TRACT 39329 - Portion of Blocks 21, and 26, Main Pass Area, Revised, Plaquemines Parish, Louisiana

All of the lands now or formerly constituting the beds and bottoms of all water bodies of every nature and description as to which title is vested in the State of Louisiana, together with all islands arising therein and other lands formed by accretion or by reliction, where allowed by law, excepting tax adjudicated lands, and not presently under mineral lease on August 8, 2007, situated in Plaquemines Parish, Louisiana, and more particularly described as follows: Beginning at a point within Block 21, Main Pass Area, Revised, having Coordinates of X = 2,622,358.78 and Y = 329,595.53; thence East 6,518.22 feet to a point on the West boundary of State Lease No. 15536, as amended, having Coordinates of X = 2,628,877.00 and Y = 329,595.53; thence along the boundary of said State Lease No. 15536 the following courses: South 1,917.53 feet to a point having Coordinates of X = 2,628,877.00 and Y = 327,678.00 and East 2,006.00 feet to a point having Coordinates of X = 2,630,883.00 and Y = 327,678.00; thence South 5,858.00 feet to a point within Block 26, Main Pass Area, Revised, also being the Northwest corner of State Lease No. 16935 having Coordinates of X = 2,630,883.00 and Y = 321,820.00; thence South 2,148.00 feet along the West boundary of said State Lease No. 16935 to its Southwest corner having Coordinates of X = 2,630,883.00 and Y = 319,672.00; thence South 2,663.78 feet to a point having Coordinates of X = 2,630,883.00 and Y = 317,008.22; thence North 74 degrees 17 minutes 29 seconds West 4,904.17 feet to the Southeast corner of State Lease No. 19249 having Coordinates of X = 2,626,162.00 and Y = 318,336.00; thence along the boundary of said State Lease No. 19249 the following courses: North 16 degrees 01 minutes 53 seconds West 4,155.61 feet to a point having Coordinates of X = 2,625,014.36 and Y = 322,330.00 and West 2,655.58 feet to a point having Coordinates of X = 2,622,358.78 and Y = 322,330.00; thence North 7,265.53 feet to the point of beginning, containing approximately **1,890.91 acres**, all as more particularly outlined on a plat on file in the Office of Mineral Resources, Department of Natural Resources. All bearings, distances and coordinates are based on Louisiana Coordinate System of 1927, (North or South Zone), where applicable.

NOTE: The above description of the Tract nominated for lease has been provided and corrected, where required, exclusively by the nomination party. Any mineral lease selected from this Tract and awarded by the Louisiana State Mineral Board shall be without warranty of any kind, either express, implied, or statutory, including, but not limited to, the implied warranties of merchantability and fitness for a particular purpose. Should the mineral lease awarded by the Louisiana State Mineral Board be subsequently modified, cancelled or abrogated due to the existence of conflicting leases, operating agreements, private claims or other future obligations or conditions which may affect all or any portion of the leased Tract, it shall not relieve the Lessee of the obligation to pay any bonus due thereon to the Louisiana State Mineral Board, nor shall the Louisiana State Mineral Board be obligated to refund any consideration

paid by the Lessor prior to such modification, cancellation, or abrogation, including, but not limited to, bonuses, rentals and royalties.

NOTE: The State of Louisiana does hereby reserve, and this lease shall be subject to, the imprescriptible right of surface use in the nature of a servitude in favor of the Department of Natural Resources, including its Offices and Commissions, for the sole purpose of implementing, constructing, servicing and maintaining approved coastal zone management and/or restoration projects. Utilization of any and all rights derived under this lease by the mineral lessee, its agents, successors or assigns, shall not interfere with nor hinder the reasonable surface use by the Department of Natural Resources, its Offices or Commissions, as herein above reserved.

Applicant: CYPRESS ENERGY CORPORATION

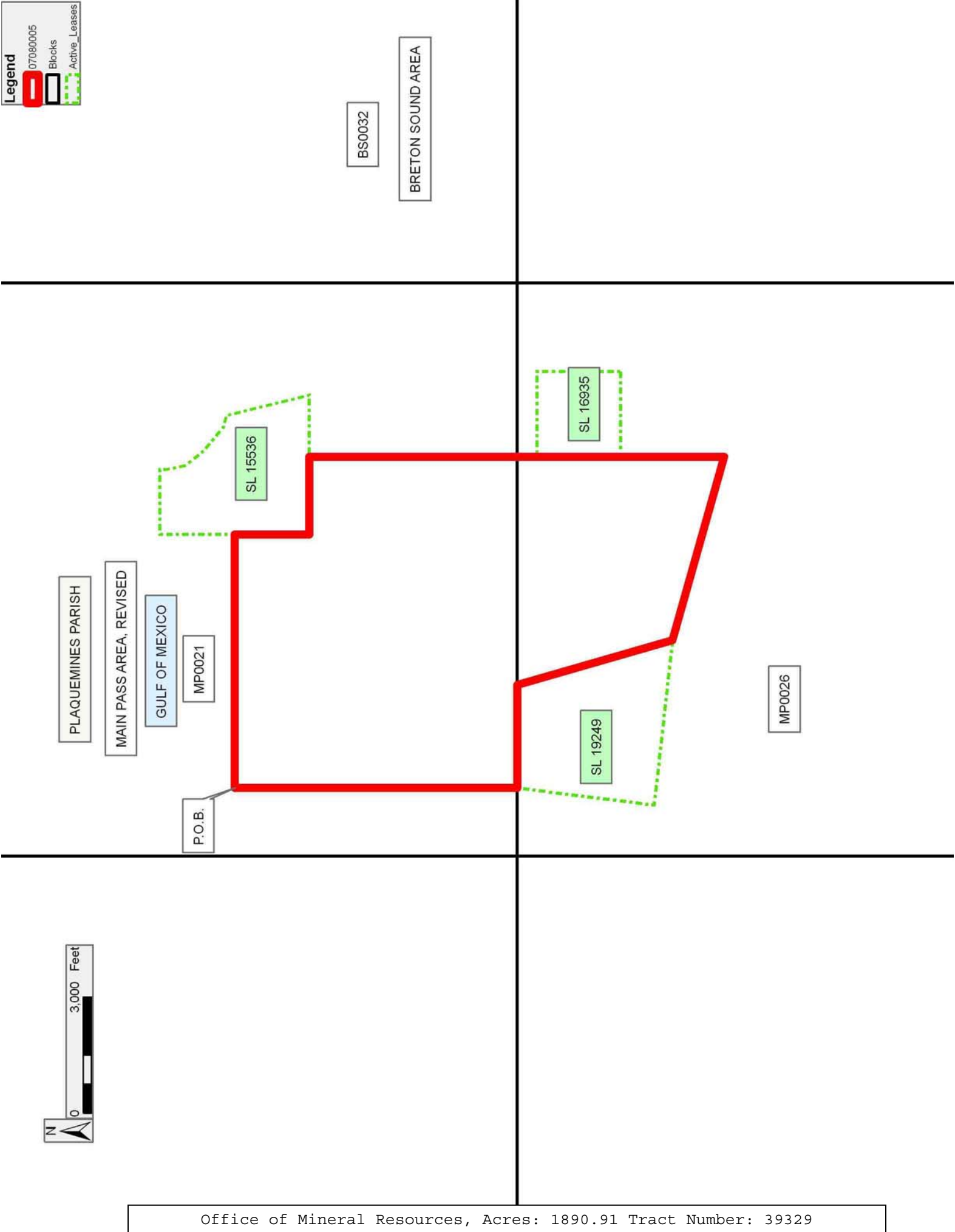
Bidder	Cash Payment	Price/ Acre	Rental	Oil	Gas	Other

Legend

07080005

Blocks

Active_Leases



TRACT 39330 - Portion of Blocks 32, and 33, Breton Sound Area, and Block 26, Main Pass Area, Revised, Plaquemines Parish, Louisiana

All of the lands now or formerly constituting the beds and bottoms of all water bodies of every nature and description as to which title is vested in the State of Louisiana, together with all islands arising therein and other lands formed by accretion or by reliction, where allowed by law, excepting tax adjudicated lands, and not presently under mineral lease on August 8, 2007, situated in Plaquemines Parish, Louisiana, and more particularly described as follows: Beginning at a point within Block 26, Main Pass Area, Revised, also being the Southwest corner of State Lease No. 16935 having Coordinates of X = 2,630,883.00 and Y = 319,672.00; thence along the boundary of said State Lease No. 16935 the following courses: East 2,187.00 feet to a point having Coordinates of X = 2,633,070.00 and Y = 319,672.00 and North 2,148.00 feet to its Northeast corner having Coordinates of X = 2,633,070.00 and Y = 321,820.00; thence North 510.00 feet to a point on the North line of said Block 26 having Coordinates of X = 2,633,070.00 and Y = 322,330.00; thence East 9,695.92 feet to a point on the South line of Block 32, Breton Sound Area, having Coordinates of X = 2,642,765.92 and Y = 322,330.00; thence North 3,687.50 feet to the Southernmost Southwest corner of State Lease No. 1227, as amended, having Coordinates of X = 2,642,765.92 and Y = 326,017.50; thence East 3,834.08 feet along the South boundary of said State Lease No. 1227 to its Southeast corner having Coordinates of X = 2,646,600.00 and Y = 326,017.50; thence South 5,875.46 feet to a point within Block 33, Breton Sound Area, also being a point on the North boundary of State Lease No. 19078 having Coordinates of X = 2,646,600.00 and Y = 320,142.04; thence along the boundary of said State Lease No. 19078 the following courses: North 61 degrees 34 minutes 26 seconds West 604.94 feet to a point having Coordinates of X = 2,646,068.00 and Y = 320,430.00; South 41 degrees 38 minutes 11 seconds West 1,614.99 feet to a point having Coordinates of X = 2,644,995.00 and Y = 319,223.00 and South 10 degrees 13 minutes 17 seconds East 2,271.04 feet to its Southwest corner having Coordinates of X = 2,645,398.00 and Y = 316,988.00; thence South 79 degrees 42 minutes 20 seconds West 6,384.78 feet to the Southeast corner of State Lease No. 18078 having Coordinates of X = 2,639,116.00 and Y = 315,847.00; thence along the boundary of said State Lease No. 18078 the following courses: North 2,271.00 feet to a point having Coordinates of X = 2,639,116.00 and Y = 318,118.00; North 39 degrees 52 minutes 03 seconds West 844.35 feet to a point having Coordinates of X = 2,638,574.76 and Y = 318,766.06 and South 50 degrees 07 minutes 57 seconds West 2,638.02 feet to the Southeast corner of State Lease No. 18663 having Coordinates of X = 2,636,550.00 and Y = 317,075.06; thence along the boundary of said State Lease No. 18663 the following courses: North 2,154.94 feet to a point having Coordinates of X = 2,636,550.00 and Y = 319,230.00; West 1,200.00 feet to a point having Coordinates of X = 2,635,350.00 and Y = 319,230.00; South 35 degrees 40 minutes 35 seconds West 2,400.52 feet to a point having Coordinates of X = 2,633,950.00 and Y = 317,280.01 and South 15 degrees 56 minutes 43 seconds West 1,092.02 feet to its Southwest corner having Coordinates of X = 2,633,650.00 and Y = 316,230.00; thence North 74

degrees 17 minutes 29 seconds West 2,874.35 feet to a point having Coordinates of X = 2,630,883.00 and Y = 317,008.22; thence North 2,663.78 feet to the point of beginning, containing approximately **1,962.13 acres**, all as more particularly outlined on a plat on file in the Office of Mineral Resources, Department of Natural Resources. All bearings, distances and coordinates are based on Louisiana Coordinate System of 1927, (North or South Zone), where applicable.

NOTE: The above description of the Tract nominated for lease has been provided and corrected, where required, exclusively by the nomination party. Any mineral lease selected from this Tract and awarded by the Louisiana State Mineral Board shall be without warranty of any kind, either express, implied, or statutory, including, but not limited to, the implied warranties of merchantability and fitness for a particular purpose. Should the mineral lease awarded by the Louisiana State Mineral Board be subsequently modified, cancelled or abrogated due to the existence of conflicting leases, operating agreements, private claims or other future obligations or conditions which may affect all or any portion of the leased Tract, it shall not relieve the Lessee of the obligation to pay any bonus due thereon to the Louisiana State Mineral Board, nor shall the Louisiana State Mineral Board be obligated to refund any consideration paid by the Lessor prior to such modification, cancellation, or abrogation, including, but not limited to, bonuses, rentals and royalties.

NOTE: The State of Louisiana does hereby reserve, and this lease shall be subject to, the imprescriptible right of surface use in the nature of a servitude in favor of the Department of Natural Resources, including its Offices and Commissions, for the sole purpose of implementing, constructing, servicing and maintaining approved coastal zone management and/or restoration projects. Utilization of any and all rights derived under this lease by the mineral lessee, its agents, successors or assigns, shall not interfere with nor hinder the reasonable surface use by the Department of Natural Resources, its Offices or Commissions, as herein above reserved.

Applicant: CYPRESS ENERGY CORPORATION

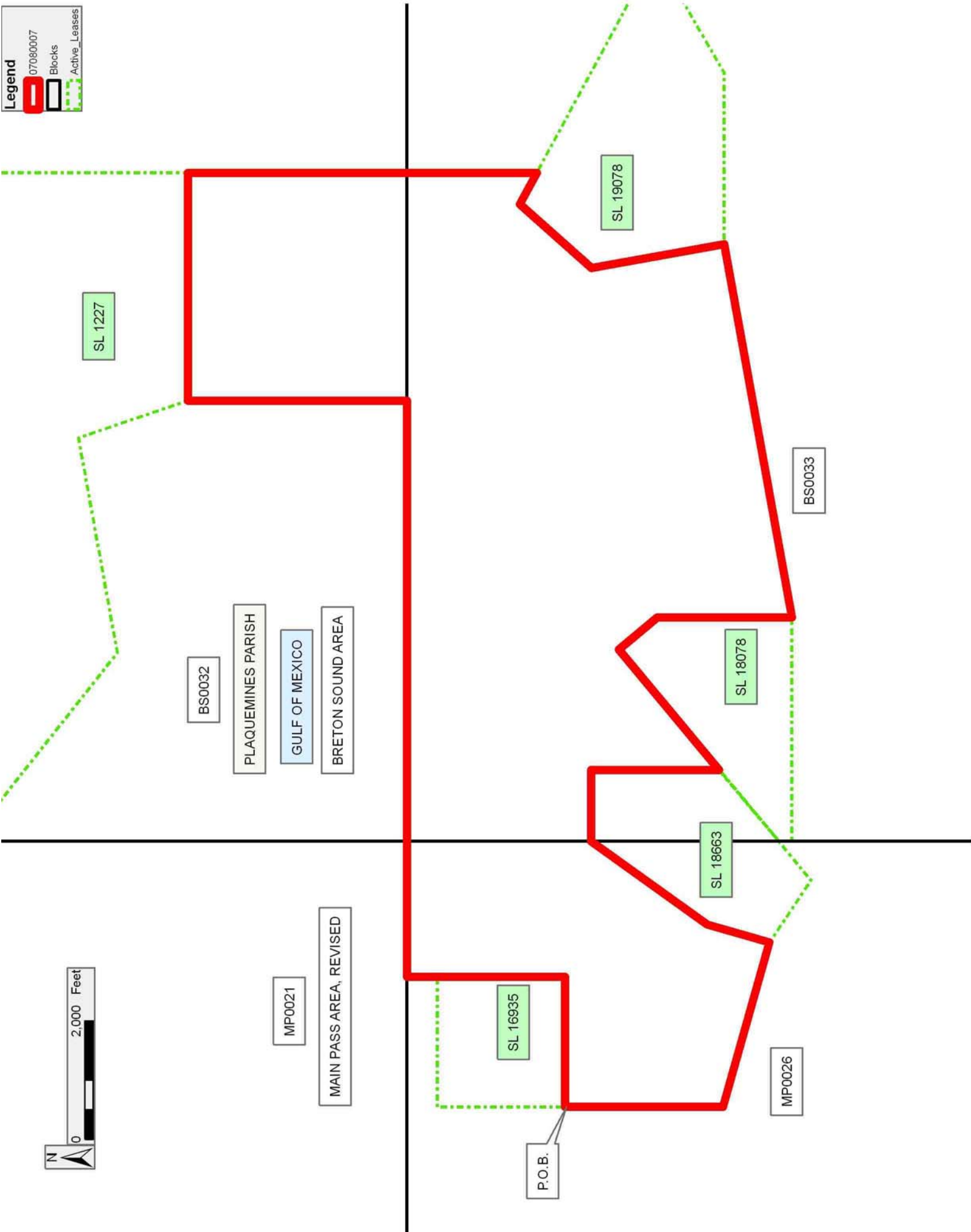
Bidder	Cash Payment	Price/ Acre	Rental	Oil	Gas	Other

Legend

07080007

Blocks

Active_Leases



TRACT 39331 - Portion of Block 46, Main Pass Area, Revised, Plaquemines Parish, Louisiana

All of the lands now or formerly constituting the beds and bottoms of all water bodies of every nature and description as to which title is vested in the State of Louisiana, together with all islands arising therein and other lands formed by accretion or by reliction, where allowed by law, excepting tax adjudicated lands, and not presently under mineral lease on August 8, 2007, situated in Plaquemines Parish, Louisiana, and more particularly described as follows: Beginning at the Northwest corner of Block 46, Main Pass Area, Revised, having Coordinates of X = 2,664,850.00 and Y = 278,080.00; Thence East 7,375.13 feet along the North line of said Block 46, to the Northwest corner of a portion of State Lease No. 2726, as amended, having Coordinates of X = 2,672,225.13 and Y = 278,080.00; Thence along the boundary of said State Lease No. 2726, as amended, the following courses: South 4,399.93 feet to a point having Coordinates of X = 2,672,225.13 and Y = 273,680.07; South 80 degrees 00 minutes 00 seconds East 1,500.00 feet to a point having Coordinates of X = 2,673,702.34 and Y = 273,419.60; South 85 degrees 30 minutes 00 seconds East 2,000.00 feet to a point having Coordinates of X = 2,675,696.17 and Y = 273,262.68; South 88 degrees 30 minutes 00 seconds East 1,500.00 feet to a point having Coordinates of X = 2,677,195.66 and Y = 273,223.42; North 87 degrees 30 minutes 00 seconds East 600.00 feet to a point having Coordinates of X = 2,677,795.09 and Y = 273,249.59; North 76 degrees 21 minutes 00 seconds East 1,188.60 feet to a point having Coordinates of X = 2,678,950.11 and Y = 273,530.09; North 38 degrees 27 minutes 00 seconds West 1,627.30 feet to a point having Coordinates of X = 2,677,938.21 and Y = 274,804.51; North 42 degrees 00 minutes 00 seconds West 1,500.00 feet to a point having Coordinates of X = 2,676,934.51 and Y = 275,919.22; North 52 degrees 00 minutes 00 seconds West 1,000.00 feet to a point having Coordinates of X = 2,676,146.50 and Y = 276,534.89; North 59 degrees 00 minutes 00 seconds West 3,000.00 feet to a point on the North line of said Block 46, said point also being the Northeast Corner of said State Lease No. 2726, as amended, having Coordinates of X = 2,673,575.00 and Y = 278,080.00; Thence East 2,975.00 feet along the North line of said Block 46, to the Northwest corner of State Lease No. 17052 having Coordinates of X = 2,676,550.00 and Y = 278,080.00; Thence along the boundary of said State Lease No. 17052 the following courses: South 1,400.00 feet to a point having X = 2,676,550.00 and Y = 276,680.00; South 42 degrees 13 minutes 15 seconds East 1,277.41 feet to a point having Coordinates of X = 2,677,408.41 and Y = 275,734.00; East 2,191.59 feet to a point on the East line of said Block 46, said point also being the Southeast Corner of said State Lease No. 17052, having Coordinates of X = 2,679,600.00 and Y = 275,734.00; Thence South 2,854.00 feet along the East line of said Block 46, to the Northeast corner of State Lease No. 19083 having Coordinates of X = 2,679,600.00 and Y = 272,880.00; Thence along the boundary of said State Lease No. 19083 the following courses: West 7,375.00 feet to a point having Coordinates of X = 2,672,225.00 and Y = 272,880.00; South 2,020.45 feet to a point having Coordinates of X = 2,672,225.00 and Y = 270,859.55; North 52 degrees 35 minutes 09 seconds West 1,549.86 feet to a point

having Coordinates of X = 2,670,994.00 and Y = 271,801.20; South 04 degrees 52 minutes 09 seconds West 4,343.66 feet to the most Southerly Southwest Corner of said State Lease No.19083, said corner also being the most Westerly Southwest corner of a portion of State Lease No. 2726, as amended, having Coordinates of X = 2,670,625.30 and Y = 267,473.22; Thence along the boundary of said State Lease No. 2726, as amended, the following courses: North 81 degrees 58 minutes 03 seconds East 788.00 feet to a point having Coordinates of X = 2,671,405.57 and Y = 267,583.33; South 89 degrees 59 minutes 57 seconds East 370.00 feet to a point having Coordinates of X = 2,671,775.57 and Y = 267,583.32; South 81 degrees 01 minutes 57 seconds East 385.00 feet to a point having Coordinates of X = 2,672,155.86 and Y = 267,523.31; South 63 degrees 25 minutes 58 seconds East 378.00 feet to a point having Coordinates of X = 2,672,495.74 and Y = 267,353.36; South 46 degrees 11 minutes 00 seconds East 513.01 feet to a point having Coordinates of X = 2,672,865.90 and Y = 266,998.17; South 37 degrees 56 minutes 59 seconds East 589.01 feet to the most Northerly Northeast corner of State Lease No. 16663 having Coordinates of X = 2,673,228.13 and Y = 266,533.70; Thence South 74 degrees 56 minutes 32 seconds West 1,038.80 feet along the North line of said State Lease No. 16663 to its Northwest corner, said corner also being the Northeast corner of State Lease No. 16662, having Coordinates of X = 2,672,225.00 and Y = 266,263.83; Thence South 74 degrees 56 minutes 32 seconds West 2,398.51 feet along the North line of said State Lease No. 16662 to the most Easterly Southeast corner of State Lease No. 19082 having Coordinates of X = 2,669,908.85 and Y = 265,640.72; Thence along the boundary of said State Lease No. 19082 the following courses: North 04 degrees 49 minutes 45 seconds West 1,292.97 feet to a point having Coordinates of X = 2,669,800.00 and Y = 266,929.10; North 46 degrees 52 minutes 13 seconds West 2,136.18 feet to a point having Coordinates of X = 2,668,241.00 and Y = 268,389.50; South 64 degrees 00 minutes 33 seconds West 2,126.84 feet to a point having Coordinates of X = 2,666,329.26 and Y = 267,457.47; South 19 degrees 10 minutes 26 seconds East 1,734.70 feet to a point having Coordinates of X = 2,666,899.00 and Y = 265,819.00; South 02 degrees 41 minutes 49 Seconds West 2,167.70 feet to a point having Coordinates of X = 2,666,797.00 and Y = 263,653.70; North 75 degrees 34 minutes 59 seconds East 1,892.04 feet to the most Southerly Southeast corner of said State Lease No. 19082, said corner also being a point on the West line of State Lease No. 16661, having Coordinates of X = 2,668,629.46 and Y = 264,124.77; Thence South 15 degrees 03 minutes 29 seconds East 823.03 feet along the West line of said State Lease No. 16661 to its Southwest corner, said corner also being a point on the South line of said Block 46, having Coordinates of X = 2,668,843.28 and Y = 263,330.00; Thence West 3,993.28 feet along the South line of said Block 46, to its Southwest corner having Coordinates of X = 2,664,850.00 and Y = 263,330.00; Thence North 14,750.00 feet along the West line of said Block 46, to the Point of Beginning, **LESS AND EXCEPT** all of a portion of State Lease No. 2726, as amended, being more fully described as follows: Beginning at the Northeast corner of said State Lease No. 2726 having Coordinates of X = 2,671,290.00 and Y = 276,520.00; thence South 2,640.00 feet along the East line of said State

Lease No. 2726 to its Southeast corner having Coordinates of X = 2,671,290.00 and Y = 273,880.00; thence West 2,640.00 feet along the South line of said State Lease No. 2726 to its Southwest corner having Coordinates of X = 2,668,650.00 and Y = 273,880.00; thence North 2,640.00 feet along the West line of said State Lease No. 2726 to its Northwest corner having Coordinates of X = 2,668,650.00 and Y = 276,520.00; thence East 2,640.00 feet along the North line of said State Lease No. 2726 to the point of beginning; All containing **2,020.78 acres**, all as more particularly outlined on a plat on file in the Office of Mineral Resources, Department of Natural Resources. All bearings, distances and coordinates are based on Louisiana Coordinate System of 1927, (North or South Zone), where applicable.

NOTE: The above description of the Tract nominated for lease has been provided and corrected, where required, exclusively by the nomination party. Any mineral lease selected from this Tract and awarded by the Louisiana State Mineral Board shall be without warranty of any kind, either express, implied, or statutory, including, but not limited to, the implied warranties of merchantability and fitness for a particular purpose. Should the mineral lease awarded by the Louisiana State Mineral Board be subsequently modified, cancelled or abrogated due to the existence of conflicting leases, operating agreements, private claims or other future obligations or conditions which may affect all or any portion of the leased Tract, it shall not relieve the Lessee of the obligation to pay any bonus due thereon to the Louisiana State Mineral Board, nor shall the Louisiana State Mineral Board be obligated to refund any consideration paid by the Lessor prior to such modification, cancellation, or abrogation, including, but not limited to, bonuses, rentals and royalties.

NOTE: The Office of Mineral Resources will require a minimum bonus of \$250 per acre and a minimum royalty of 23%.

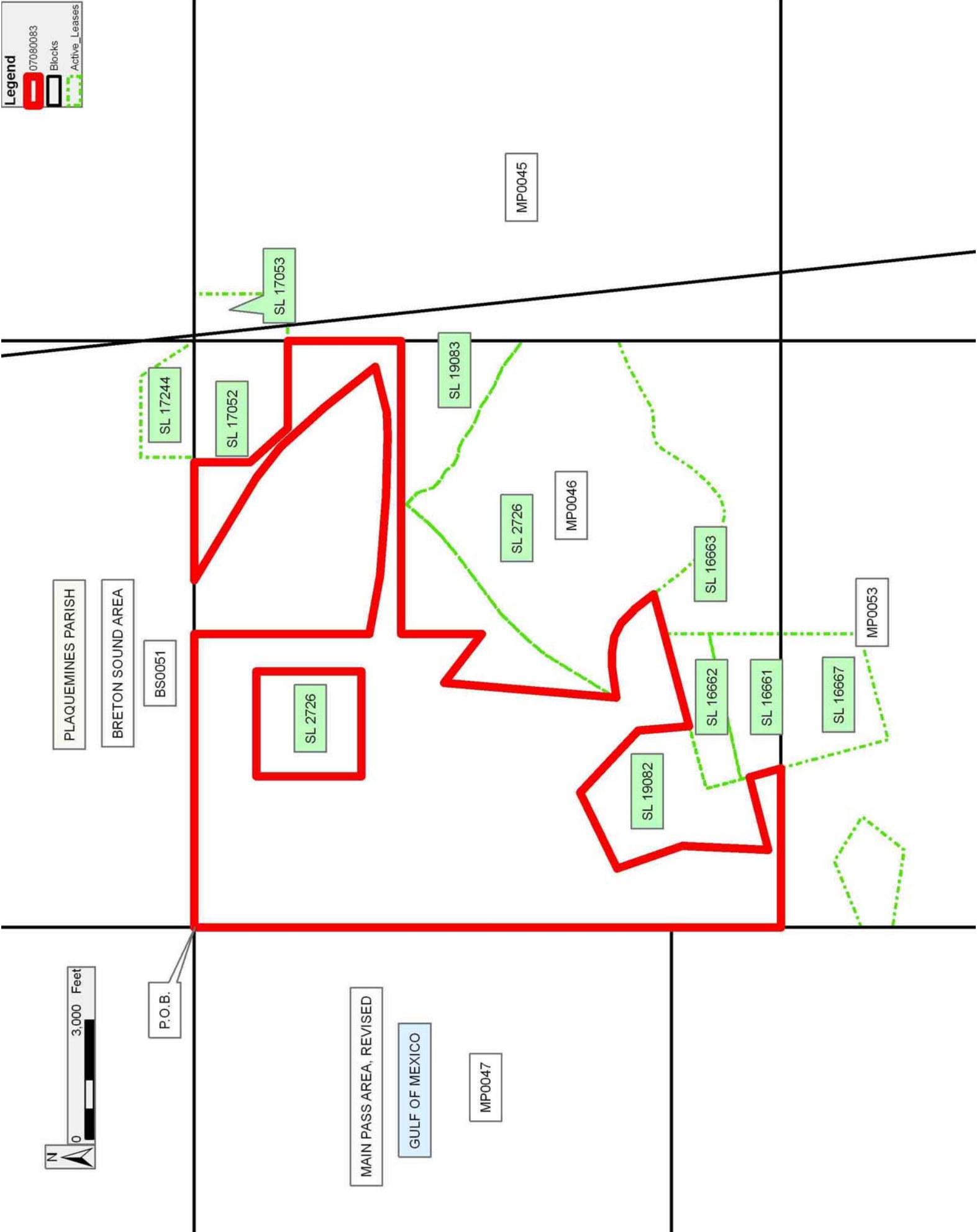
NOTE: The State of Louisiana does hereby reserve, and this lease shall be subject to, the imprescriptible right of surface use in the nature of a servitude in favor of the Department of Natural Resources, including its Offices and Commissions, for the sole purpose of implementing, constructing, servicing and maintaining approved coastal zone management and/or restoration projects. Utilization of any and all rights derived under this lease by the mineral lessee, its agents, successors or assigns, shall not interfere with nor hinder the reasonable surface use by the Department of Natural Resources, its Offices or Commissions, as herein above reserved.

Applicant: CLARK EXPLORATION COMPANY

Bidder	Cash Payment	Price/ Acre	Rental	Oil	Gas	Other

Legend

- 07080083
- Blocks
- Active Leases



TRACT 39332 - Portion of Block 113, South Timbalier Area, Revised, Terrebonne Parish, Louisiana

All of the lands now or formerly constituting the beds and bottoms of all water bodies of every nature and description as to which title is vested in the State of Louisiana, together with all islands arising therein and other lands formed by accretion or by reliction, where allowed by law, excepting tax adjudicated lands, and not presently under mineral lease on August 8, 2007, situated in Terrebonne Parish, Louisiana, and more particularly described as follows: Beginning at a point within Block 113, South Timbalier Area, Revised, also being the Southeast corner of State Lease No. 18345 having Coordinates of X = 2,225,660.30 and Y = 183,801.37; thence North 89 degrees 39 minutes 55 seconds East 5,109.00 feet to a point having Coordinates of X = 2,230,769.21 and Y = 183,831.22; thence South 00 degrees 00 minutes 02 seconds East 14,764.89 feet to a point on the North boundary of State Lease No. 2620, as amended, having Coordinates of X = 2,230,769.35 and Y = 169,066.33; thence West 5,022.97 feet along the North boundary of said State Lease No. 2620 to the Southeast corner of State Lease No. 18167 having Coordinates of X = 2,225,746.39 and Y = 169,066.33; thence North 00 degrees 20 minutes 05 seconds West 14,735.29 feet along the East boundary of said State Lease No. 18167 to the point of beginning, **LESS AND EXCEPT** that portion, if any, of State Lease No. 2620, as amended, that may lie within the above described tract, containing approximately **1,715 acres**, all as more particularly outlined on a plat on file in the Office of Mineral Resources, Department of Natural Resources. All bearings, distances and coordinates are based on Louisiana Coordinate System of 1927, (North or South Zone), where applicable.

NOTE: The above description of the Tract nominated for lease has been provided and corrected, where required, exclusively by the nomination party. Any mineral lease selected from this Tract and awarded by the Louisiana State Mineral Board shall be without warranty of any kind, either express, implied, or statutory, including, but not limited to, the implied warranties of merchantability and fitness for a particular purpose. Should the mineral lease awarded by the Louisiana State Mineral Board be subsequently modified, cancelled or abrogated due to the existence of conflicting leases, operating agreements, private claims or other future obligations or conditions which may affect all or any portion of the leased Tract, it shall not relieve the Lessee of the obligation to pay any bonus due thereon to the Louisiana State Mineral Board, nor shall the Louisiana State Mineral Board be obligated to refund any consideration paid by the Lessor prior to such modification, cancellation, or abrogation, including, but not limited to, bonuses, rentals and royalties.

NOTE: The State of Louisiana does hereby reserve, and this lease shall be subject to, the imprescriptible right of surface use in the nature of a servitude in favor of the Department of Natural Resources, including its Offices and Commissions, for the sole purpose of implementing, constructing, servicing and maintaining approved coastal zone management and/or restoration projects. Utilization of any and all rights derived

under this lease by the mineral lessee, its agents, successors or assigns, shall not interfere with nor hinder the reasonable surface use by the Department of Natural Resources, its Offices or Commissions, as herein above reserved.

NOTE: It appears, according to our records, that a portion of this Tract is located within the restrictive safety fairway area as set out by the Corps of Engineers, U.S. Army and/or the restrictive anchorage area as set out by the U.S. Coast Guard.

NOTE: The Department of Wildlife and Fisheries has designated certain areas in the coastal waters of the State of Louisiana as Oyster Seed Bed Areas. The exact location of those Seed Bed Areas must be obtained from the Department of Wildlife and Fisheries and any work done under a mineral lease from the State of Louisiana may necessarily be conducted in conformity with the rules and regulations promulgated by the said Department of Wildlife and Fisheries for Oyster Seed Bed Areas.

Applicant: THE LOUISIANA LAND AND EXPLORATION COMPANY

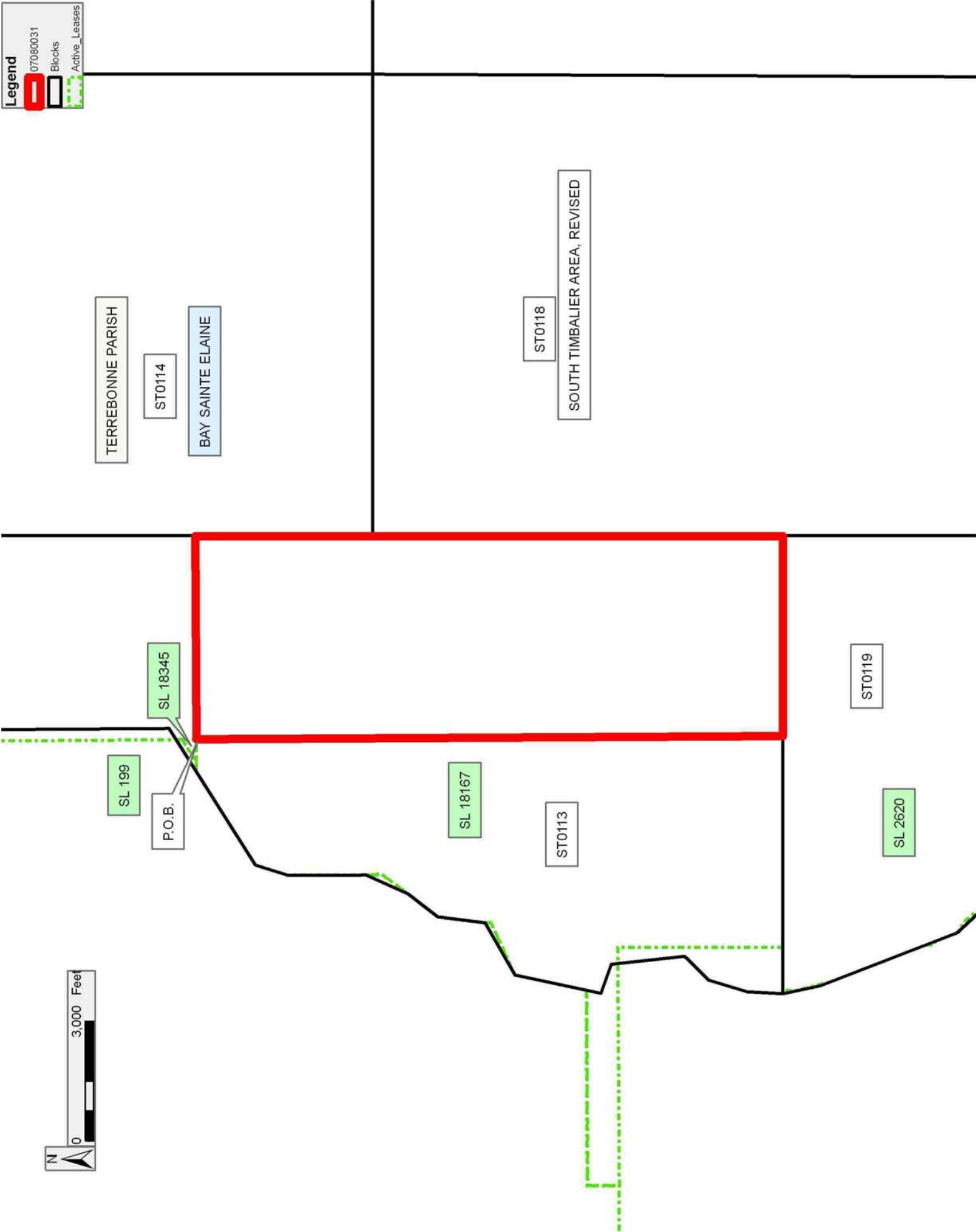
Bidder	Cash Payment	Price/ Acre	Rental	Oil	Gas	Other

Legend

07080031

Blocks

Active_Leases



TRACT 39333 - Portion of Blocks 116, 117, and 118, South Timbalier Area, Revised, Terrebonne Parish, Louisiana

All of the lands now or formerly constituting the beds and bottoms of all water bodies of every nature and description as to which title is vested in the State of Louisiana, together with all islands arising therein and other lands formed by accretion or by reliction, where allowed by law, excepting tax adjudicated lands, and not presently under mineral lease on August 8, 2007, situated in Terrebonne Parish, Louisiana, and more particularly described as follows: Beginning at a point within Block 118, South Timbalier Area, Revised, having Coordinates of X = 2,241,084.02 and Y = 172,245.48; thence North 5,990.88 feet to a point having Coordinates of X = 2,241,084.02 and Y = 178,236.36; thence East 1,205.86 feet to a point on the East line of said Block 118, also being a point on the West line of Block 117, South Timbalier Area, Revised, having Coordinates of X = 2,242,289.88 and Y = 178,236.36; thence East 11,518.16 feet to a point on the East line of said Block 117, also being a point on the West line of Block 116, South Timbalier Area, Revised, having Coordinates of X = 2,253,808.04 and Y = 178,236.36; thence East 8,256.71 feet to a point on the East line of said Block 116 having Coordinates of X = 2,262,064.75 and Y = 178,236.36; thence South 00 degrees 24 minutes 55 seconds East 1,917.68 feet along the East line of said Block 116 to the Northernmost Northwest corner of State Lease No. 301, as amended, also being the Northernmost Northeast corner of State Lease No. 1247, as amended, having Coordinates of X = 2,262,078.65 and Y = 176,318.73; thence along the boundary of said State Lease No. 1247 the following courses: West 470.61 feet to a point having Coordinates of X = 2,261,608.04 and Y = 176,318.73; South 1,223.25 feet to a point having Coordinates of X = 2,261,608.04 and Y = 175,095.48; West 3,400.00 feet to a point having Coordinates of X = 2,258,208.04 and Y = 175,095.48; South 200.00 feet to a point having Coordinates of X = 2,258,208.04 and Y = 174,895.48; West 4,050.00 feet to a point having Coordinates of X = 2,254,158.04 and Y = 174,895.48; South 2,650.00 feet to a point having Coordinates of X = 2,254,158.04 and Y = 172,245.48 and West 350.00 feet to a point on the West line of said Block 116, also being the Westernmost Northwest corner of said State Lease No. 1247 having Coordinates of X = 2,253,808.04 and Y = 172,245.48; thence West 11,518.16 feet to a point on the West line of said Block 117, also being a point on the East line of said Block 118 having Coordinates of X = 2,242,289.88 and Y = 172,245.48; thence West 1,205.86 feet to the point of beginning, **LESS AND EXCEPT** that portion, if any, of State Lease No. 301, as amended, which may lie within the above described tract, containing approximately **2,374.28 acres**, all as more particularly outlined on a plat on file in the Office of Mineral Resources, Department of Natural Resources. All bearings, distances and coordinates are based on Louisiana Coordinate System of 1927, (North or South Zone), where applicable.

NOTE: The above description of the Tract nominated for lease has been provided and corrected, where required, exclusively by the nomination party. Any mineral lease selected from this Tract and awarded by the Louisiana State Mineral Board shall be without warranty of any kind,

either express, implied, or statutory, including, but not limited to, the implied warranties of merchantability and fitness for a particular purpose. Should the mineral lease awarded by the Louisiana State Mineral Board be subsequently modified, cancelled or abrogated due to the existence of conflicting leases, operating agreements, private claims or other future obligations or conditions which may affect all or any portion of the leased Tract, it shall not relieve the Lessee of the obligation to pay any bonus due thereon to the Louisiana State Mineral Board, nor shall the Louisiana State Mineral Board be obligated to refund any consideration paid by the Lessor prior to such modification, cancellation, or abrogation, including, but not limited to, bonuses, rentals and royalties.

NOTE: The State of Louisiana does hereby reserve, and this lease shall be subject to, the imprescriptible right of surface use in the nature of a servitude in favor of the Department of Natural Resources, including its Offices and Commissions, for the sole purpose of implementing, constructing, servicing and maintaining approved coastal zone management and/or restoration projects. Utilization of any and all rights derived under this lease by the mineral lessee, its agents, successors or assigns, shall not interfere with nor hinder the reasonable surface use by the Department of Natural Resources, its Offices or Commissions, as herein above reserved.

NOTE: It appears, according to our records, that a portion of this Tract is located within the restrictive safety fairway area as set out by the Corps of Engineers, U.S. Army and/or the restrictive anchorage area as set out by the U.S. Coast Guard.

NOTE: The Department of Wildlife and Fisheries has designated certain areas in the coastal waters of the State of Louisiana as Oyster Seed Bed Areas. The exact location of those Seed Bed Areas must be obtained from the Department of Wildlife and Fisheries and any work done under a mineral lease from the State of Louisiana may necessarily be conducted in conformity with the rules and regulations promulgated by the said Department of Wildlife and Fisheries for Oyster Seed Bed Areas.

Applicant: LAND MANAGEMENT SERVICES, L.L.C.

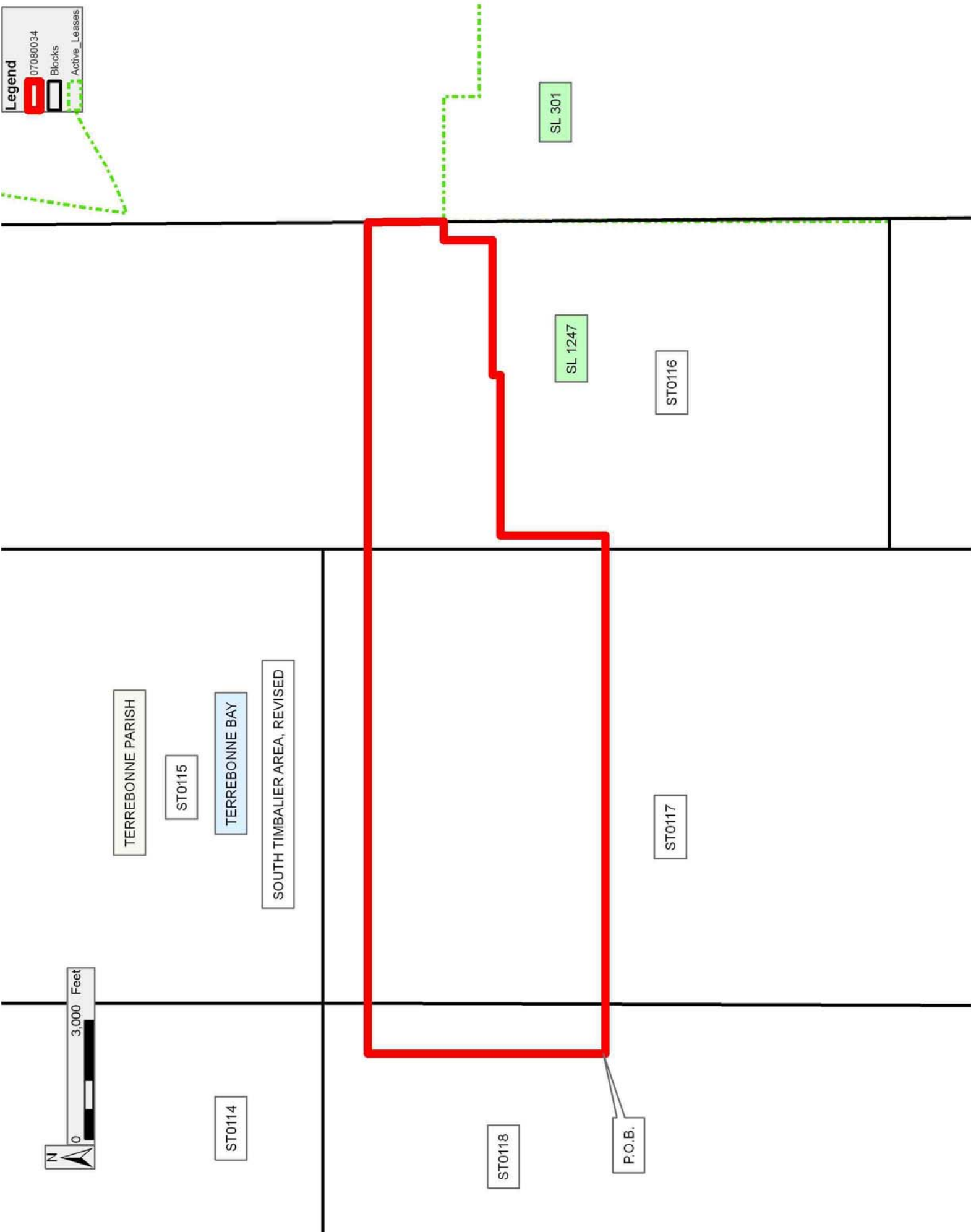
Bidder	Cash Payment	Price/ Acre	Rental	Oil	Gas	Other

Legend

07080034

Blocks

Active_Leases



TRACT 39334 - Portion of Block 113, South Timbalier Area, Revised, Terrebonne Parish, Louisiana

All of the lands now or formerly constituting the beds and bottoms of all water bodies of every nature and description as to which title is vested in the State of Louisiana, together with all islands arising therein and other lands formed by accretion or by reliction, where allowed by law, excepting tax adjudicated lands, and not presently under mineral lease on August 8, 2007, situated in Terrebonne Parish, Louisiana, and more particularly described as follows: Beginning at a point having Coordinates of X = 2,209,913.08 and Y = 167,874.59; thence North 00 degrees 20 minutes 05 seconds West approximately 3,875 feet to a point on the Southern boundary of the Western portion of State Lease No. 199, as amended; thence along the boundary of said State Lease No. 199 the following courses: East approximately 350 feet; North 1,400.00 feet and East 4,230.00 feet to a point on its Southern boundary, also being the Westernmost Southwest corner of State Lease No. 18167 having Coordinates of X = 2,214,464.40 and Y = 173,173.00; thence along the boundary of said State Lease No. 18167 the following courses: North 89 degrees 38 minutes 19 seconds East 5,977.80 feet and South 00 degrees 10 minutes 26 seconds East 2,610.71 feet to the Northeast corner of State Lease No. 16510 having Coordinates of X = 2,220,450.00 and Y = 170,600.00; thence along the boundary of said State Lease No. 16510 the following courses: West 7,900.00 feet and South 2,710.00 feet to its Southwest corner, also being the Northwest corner of State Lease No. 16511 having Coordinates of X = 2,212,550.00 and Y = 167,890.00; thence South 89 degrees 39 minutes 55 seconds West 2,636.97 feet to the point of beginning, **LESS AND EXCEPT** that portion, if any, of State Lease No. 199, as amended, that may lie within the above described tract, containing approximately **747 acres**, all as more particularly outlined on a plat on file in the Office of Mineral Resources, Department of Natural Resources. All bearings, distances and coordinates are based on Louisiana Coordinate System of 1927, (North or South Zone), where applicable.

NOTE: The above description of the Tract nominated for lease has been provided and corrected, where required, exclusively by the nomination party. Any mineral lease selected from this Tract and awarded by the Louisiana State Mineral Board shall be without warranty of any kind, either express, implied, or statutory, including, but not limited to, the implied warranties of merchantability and fitness for a particular purpose. Should the mineral lease awarded by the Louisiana State Mineral Board be subsequently modified, cancelled or abrogated due to the existence of conflicting leases, operating agreements, private claims or other future obligations or conditions which may affect all or any portion of the leased Tract, it shall not relieve the Lessee of the obligation to pay any bonus due thereon to the Louisiana State Mineral Board, nor shall the Louisiana State Mineral Board be obligated to refund any consideration paid by the Lessor prior to such modification, cancellation, or abrogation, including, but not limited to, bonuses, rentals and royalties.

NOTE: The State of Louisiana does hereby reserve, and this lease shall be subject to, the imprescriptible right of surface use in the nature of a servitude in favor of the Department of Natural Resources, including its Offices and Commissions, for the sole purpose of implementing, constructing, servicing and maintaining approved coastal zone management and/or restoration projects. Utilization of any and all rights derived under this lease by the mineral lessee, its agents, successors or assigns, shall not interfere with nor hinder the reasonable surface use by the Department of Natural Resources, its Offices or Commissions, as herein above reserved.

NOTE: The Department of Wildlife and Fisheries has designated certain areas in the coastal waters of the State of Louisiana as Oyster Seed Bed Areas. The exact location of those Seed Bed Areas must be obtained from the Department of Wildlife and Fisheries and any work done under a mineral lease from the State of Louisiana may necessarily be conducted in conformity with the rules and regulations promulgated by the said Department of Wildlife and Fisheries for Oyster Seed Bed Areas.

Applicant: THE LOUISIANA LAND AND EXPLORATION COMPANY

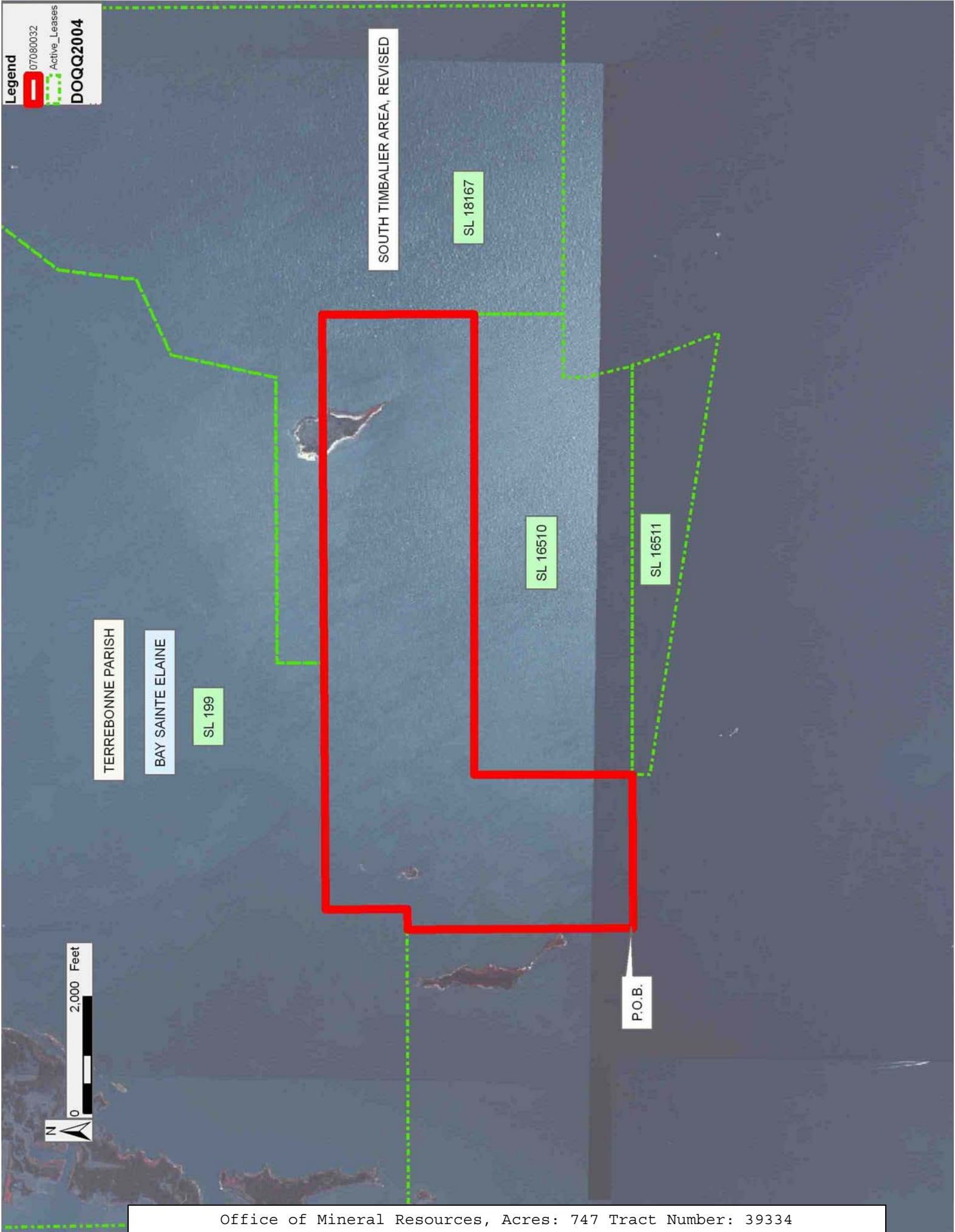
Bidder	Cash Payment	Price/ Acre	Rental	Oil	Gas	Other

Legend

 07080032

 Active_Leases

DOQQ2004



TRACT 39335 - Portion of Blocks 117, and 118, South Timbalier Area, Revised, Terrebonne Parish, Louisiana

All of the lands now or formerly constituting the beds and bottoms of all water bodies of every nature and description as to which title is vested in the State of Louisiana, together with all islands arising therein and other lands formed by accretion or by reliction, where allowed by law, excepting tax adjudicated lands, and not presently under mineral lease on August 8, 2007, situated in Terrebonne Parish, Louisiana, and more particularly described as follows: Beginning at a point within Block 118, South Timbalier Area, Revised, having Coordinates of X = 2,241,084.02 and Y = 172,245.48; thence East 1,205.86 feet to a point on the East line of said Block 118, also being a point on the West line of Block 117, South Timbalier Area, Revised, having Coordinates of X = 2,242,289.88 and Y = 172,245.48; thence East 11,518.16 feet to a point on the East line of said Block 117, also being the Westernmost Northwest corner of State Lease No. 1247, as amended, having Coordinates of X = 2,253,808.04 and Y = 172,245.48; thence South 2,167.79 feet along the Westernmost West boundary of said State Lease No. 1247 to the Northernmost Northeast corner of State Lease No. 2856, as amended, having Coordinates of X = 2,253,808.04 and Y = 170,077.69; thence along the boundary of said State Lease No. 2856 the following courses: West 2,249.00 feet to a point having Coordinates of X = 2,251,559.04 and Y = 170,077.69; South 3,050.00 feet to a point having Coordinates of X = 2,251,559.04 and Y = 167,027.69 and West 2,250.00 feet to the Westernmost Northwest corner of said State Lease No. 2856 having Coordinates of X = 2,249,309.04 and Y = 167,027.69; thence West 7,019.16 feet to a point on the West line of said Block 117, also being a point on the East line of said Block 118 having Coordinates of X = 2,242,289.88 and Y = 167,027.69; thence West 1,205.86 feet to a point having Coordinates of X = 2,241,084.02 and Y = 167,027.69; thence North 5,217.79 feet to the point of beginning, containing approximately **1,366.66 acres**, all as more particularly outlined on a plat on file in the Office of Mineral Resources, Department of Natural Resources. All bearings, distances and coordinates are based on Louisiana Coordinate System of 1927, (North or South Zone), where applicable.

NOTE: The above description of the Tract nominated for lease has been provided and corrected, where required, exclusively by the nomination party. Any mineral lease selected from this Tract and awarded by the Louisiana State Mineral Board shall be without warranty of any kind, either express, implied, or statutory, including, but not limited to, the implied warranties of merchantability and fitness for a particular purpose. Should the mineral lease awarded by the Louisiana State Mineral Board be subsequently modified, cancelled or abrogated due to the existence of conflicting leases, operating agreements, private claims or other future obligations or conditions which may affect all or any portion of the leased Tract, it shall not relieve the Lessee of the obligation to pay any bonus due thereon to the Louisiana State Mineral Board, nor shall the Louisiana State Mineral Board be obligated to refund any consideration

paid by the Lessor prior to such modification, cancellation, or abrogation, including, but not limited to, bonuses, rentals and royalties.

NOTE: The State of Louisiana does hereby reserve, and this lease shall be subject to, the imprescriptible right of surface use in the nature of a servitude in favor of the Department of Natural Resources, including its Offices and Commissions, for the sole purpose of implementing, constructing, servicing and maintaining approved coastal zone management and/or restoration projects. Utilization of any and all rights derived under this lease by the mineral lessee, its agents, successors or assigns, shall not interfere with nor hinder the reasonable surface use by the Department of Natural Resources, its Offices or Commissions, as herein above reserved.

NOTE: It appears, according to our records, that a portion of this Tract is located within the restrictive safety fairway area as set out by the Corps of Engineers, U.S. Army and/or the restrictive anchorage area as set out by the U.S. Coast Guard.

NOTE: The Department of Wildlife and Fisheries has designated certain areas in the coastal waters of the State of Louisiana as Oyster Seed Bed Areas. The exact location of those Seed Bed Areas must be obtained from the Department of Wildlife and Fisheries and any work done under a mineral lease from the State of Louisiana may necessarily be conducted in conformity with the rules and regulations promulgated by the said Department of Wildlife and Fisheries for Oyster Seed Bed Areas.

Applicant: LAND MANAGEMENT SERVICES, L.L.C.

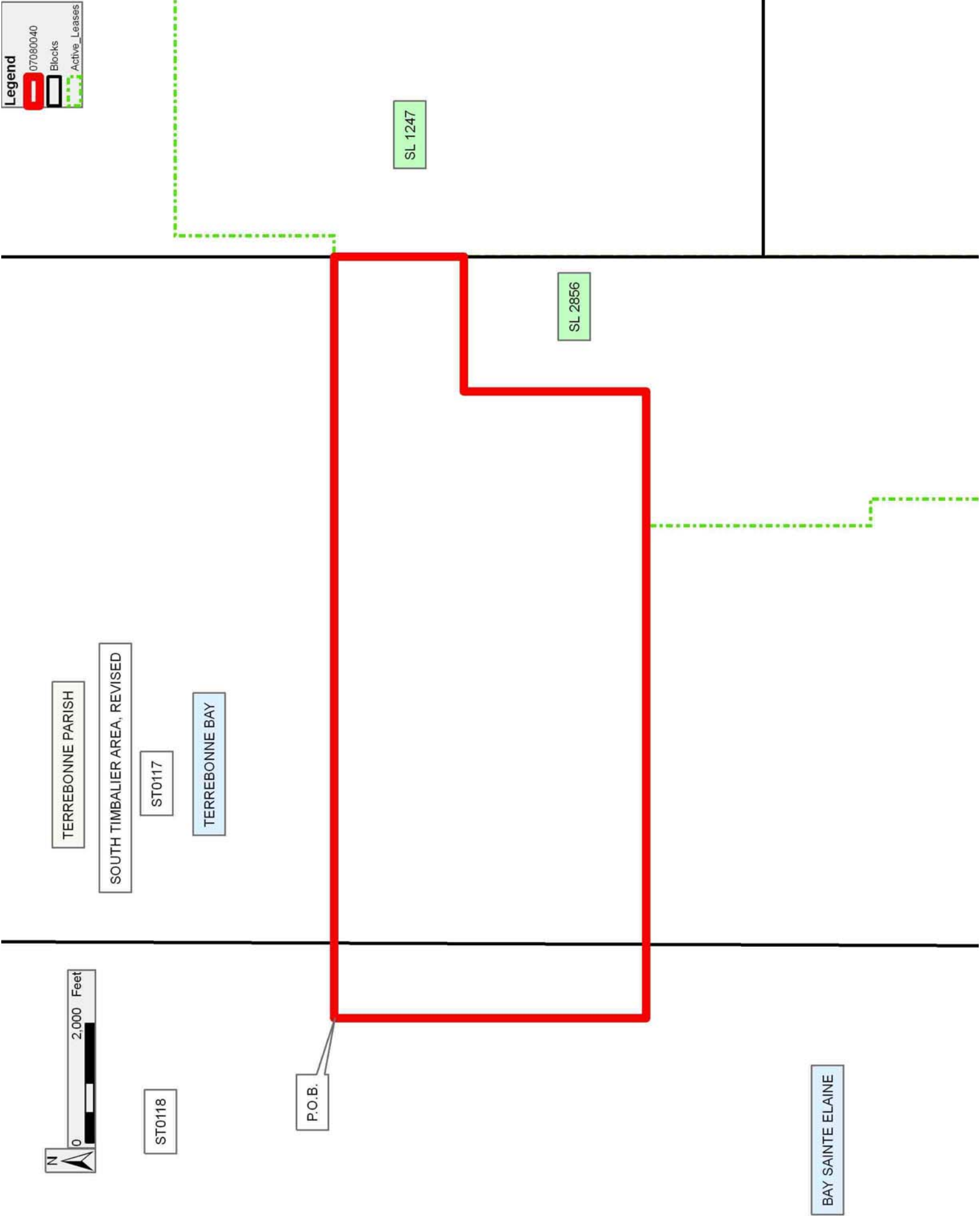
Bidder	Cash Payment	Price/ Acre	Rental	Oil	Gas	Other

Legend

07080040

Blocks

Active_Leases



TRACT 39336 - Terrebonne Parish, Louisiana

All of the lands now or formerly constituting the beds and bottoms of all water bodies of every nature and description as to which title is vested in the State of Louisiana, together with all islands arising therein and other lands formed by accretion or by reliction, where allowed by law, excepting tax adjudicated lands, and not presently under mineral lease on August 8, 2007, situated in Terrebonne Parish, Louisiana, and more particularly described as follows: Beginning at a point having Coordinates of X = 2,209,913.08 and Y = 167,874.59; thence North 89 degrees 39 minutes 55 seconds East 2,636.97 feet to the Southwest corner of State Lease No. 16510, as amended, also being the Northwest corner of State Lease No. 16511 having Coordinates of X = 2,212,550.00 and Y = 167,890.00; thence along the boundary of said State Lease No. 16511 the following courses: South approximately 300 feet to its Southwest corner having a Coordinate of X = 2,212,550.00 and Southeasterly approximately 585 feet to a point on its South boundary, also being the Northwest corner of State Lease No. 16705, as amended, having Coordinates of X = 2,213,128.02 and Y = 167,500.23; thence along the boundary of said State Lease No. 16705 the following courses: South 2,290.49 feet and East 3,482.23 feet to a point on its South boundary, also being the Northernmost Northwest corner of a portion of State Lease No. 188, as amended, having Coordinates of X = 2,216,610.25 and Y = 165,209.74; thence along the boundary of a portion of said State Lease No. 188 the following courses: South 00 degrees 20 minutes 06 seconds East 2,008.96 feet; South 89 degrees 39 minutes 54 seconds West 509.80 feet; South 00 degrees 20 minutes 05 seconds East 3,254.50 feet; South 89 degrees 39 minutes 55 seconds West 3,217.30 feet; South 00 degrees 20 minutes 07 seconds East 309.30 feet and South 89 degrees 39 minutes 55 seconds West 4,357.50 feet to a point having Coordinates of X = 2,208,558.34 and Y = 159,589.85; thence North 00 degrees 20 minutes 05 seconds West 2,864.01 feet to a point having Coordinates of X = 2,208,541.61 and Y = 162,453.81; thence North 89 degrees 39 minutes 55 seconds East 1,403.12 feet to a point having Coordinates of X = 2,209,944.70 and Y = 162,462.01; thence North 00 degrees 20 minutes 05 seconds West 5,412.68 feet to the point of beginning, **LESS AND EXCEPT** that portion, if any, of State Lease No. 188, as amended, and State Lease No. 16511 that may lie within the above described tract, containing approximately **1,078 acres**, all as more particularly outlined on a plat on file in the Office of Mineral Resources, Department of Natural Resources. All bearings, distances and coordinates are based on Louisiana Coordinate System of 1927, (North or South Zone), where applicable.

NOTE: The above description of the Tract nominated for lease has been provided and corrected, where required, exclusively by the nomination party. Any mineral lease selected from this Tract and awarded by the Louisiana State Mineral Board shall be without warranty of any kind, either express, implied, or statutory, including, but not limited to, the implied warranties of merchantability and fitness for a particular purpose. Should the mineral lease awarded by the Louisiana State Mineral

Board be subsequently modified, cancelled or abrogated due to the existence of conflicting leases, operating agreements, private claims or other future obligations or conditions which may affect all or any portion of the leased Tract, it shall not relieve the Lessee of the obligation to pay any bonus due thereon to the Louisiana State Mineral Board, nor shall the Louisiana State Mineral Board be obligated to refund any consideration paid by the Lessor prior to such modification, cancellation, or abrogation, including, but not limited to, bonuses, rentals and royalties.

NOTE: The State of Louisiana does hereby reserve, and this lease shall be subject to, the imprescriptible right of surface use in the nature of a servitude in favor of the Department of Natural Resources, including its Offices and Commissions, for the sole purpose of implementing, constructing, servicing and maintaining approved coastal zone management and/or restoration projects. Utilization of any and all rights derived under this lease by the mineral lessee, its agents, successors or assigns, shall not interfere with nor hinder the reasonable surface use by the Department of Natural Resources, its Offices or Commissions, as herein above reserved.

NOTE: The Department of Wildlife and Fisheries has designated certain areas in the coastal waters of the State of Louisiana as Oyster Seed Bed Areas. The exact location of those Seed Bed Areas must be obtained from the Department of Wildlife and Fisheries and any work done under a mineral lease from the State of Louisiana may necessarily be conducted in conformity with the rules and regulations promulgated by the said Department of Wildlife and Fisheries for Oyster Seed Bed Areas.

Applicant: THE LOUISIANA LAND AND EXPLORATION COMPANY

Bidder	Cash Payment	Price/ Acre	Rental	Oil	Gas	Other

