

TRACT 39317 - Lafourche and St. Charles Parishes, Louisiana

All of the lands now or formerly constituting the beds and bottoms of all water bodies of every nature and description as to which title is vested in the State of Louisiana, together with all islands arising therein and other lands formed by accretion or by reliction, where allowed by law, excepting tax adjudicated lands, and not presently under mineral lease on August 8, 2007, situated in Lafourche and St. Charles Parishes, Louisiana, and more particularly described as follows: Beginning at a point having Coordinates of X = 2,330,760.00 and Y = 385,108.00; thence East 5,542.65 feet to the Northwest corner of State Lease No. 19199 having Coordinates of X = 2,336,302.65 and Y = 385,108.00; thence along the boundary of said State Lease No. 19199 the following courses: South 16 degrees 44 minutes 09 seconds East 858.03 feet to its Southwest corner having Coordinates of X = 2,336,549.73 and Y = 384,286.31 and North 72 degrees 05 minutes 07 seconds East 1,666.05 feet to its Southeast corner, also being the Westernmost Northwest corner of State Lease No. 19232 having Coordinates of X = 2,338,135.00 and Y = 384,798.79; thence South 5,133.56 feet along the West boundary of said State Lease No. 19232 to the Northeast corner of State Lease No. 19200 having Coordinates of X = 2,338,135.00 and Y = 379,665.23; thence along the boundary of said State Lease No. 19200 the following courses: North 85 degrees 57 minutes 27 seconds West 236.05 feet to its Northwest corner having Coordinates of X = 2,337,899.54 and Y = 379,681.87; South 03 degrees 56 minutes 50 seconds West 2,534.86 feet to its Southwest corner having Coordinates of X = 2,337,725.05 and Y = 377,153.02 and South 86 degrees 12 minutes 04 seconds East 410.85 feet to its Southeast corner, also being a point on the West boundary of said State Lease No. 19232 having Coordinates of X = 2,338,135.00 and Y = 377,125.80; thence South 3,825.80 feet along the West boundary of said State Lease No. 19232 to its Southwest corner having Coordinates of X = 2,338,135.00 and Y = 373,300.00; thence South 2,942.00 feet to a point having Coordinates of X = 2,338,135.00 and Y = 370,358.00; thence West 7,375.00 feet to a point having Coordinates of X = 2,330,760.00 and Y = 370,358.00; thence North 14,750.00 feet to the point of beginning, **LESS AND EXCEPT** all of State Lease No. 19201, as amended, that lies within the above described tract, being more fully described as follows: Commencing at the point of beginning of the above described nominated tract having Coordinates of X = 2,330,760.00 and Y = 385,108.00; thence South 18 degrees 39 minutes 08 seconds East 5,753.17 feet to the Northwest corner of said State Lease No. 19201 having Coordinates of X = 2,332,600.00 and Y = 379,657.00; thence along the boundary of said State Lease No. 19201 the following courses: North 71 degrees 21 minutes 39 seconds East 2,040.00 feet to a point having Coordinates of X = 2,334,533.00 and Y = 380,309.00; South 20 degrees 42 minutes 16 seconds East 9,679.10 feet to a point having Coordinates of X = 2,337,955.00 and Y = 371,255.00; South 73 degrees 38 minutes 34 seconds West 898.36 feet to a point having Coordinates of X = 2,337,093.00 and Y = 371,002.00; North 40 degrees 57 minutes 13 seconds West 4,108.63 feet to a point having Coordinates of X = 2,334,400.00 and Y = 374,105.00 and North 17 degrees 57 minutes 47 seconds West 5,836.50 feet to its said Northwest corner; the nominated tract

containing approximately **2,022.86 acres**, all as more particularly outlined on a plat on file in the Office of Mineral Resources, Department of Natural Resources. All bearings, distances and coordinates are based on Louisiana Coordinate System of 1927, (North or South Zone), where applicable.

NOTE: The above description of the Tract nominated for lease has been provided and corrected, where required, exclusively by the nomination party. Any mineral lease selected from this Tract and awarded by the Louisiana State Mineral Board shall be without warranty of any kind, either express, implied, or statutory, including, but not limited to, the implied warranties of merchantability and fitness for a particular purpose. Should the mineral lease awarded by the Louisiana State Mineral Board be subsequently modified, cancelled or abrogated due to the existence of conflicting leases, operating agreements, private claims or other future obligations or conditions which may affect all or any portion of the leased Tract, it shall not relieve the Lessee of the obligation to pay any bonus due thereon to the Louisiana State Mineral Board, nor shall the Louisiana State Mineral Board be obligated to refund any consideration paid by the Lessor prior to such modification, cancellation, or abrogation, including, but not limited to, bonuses, rentals and royalties.

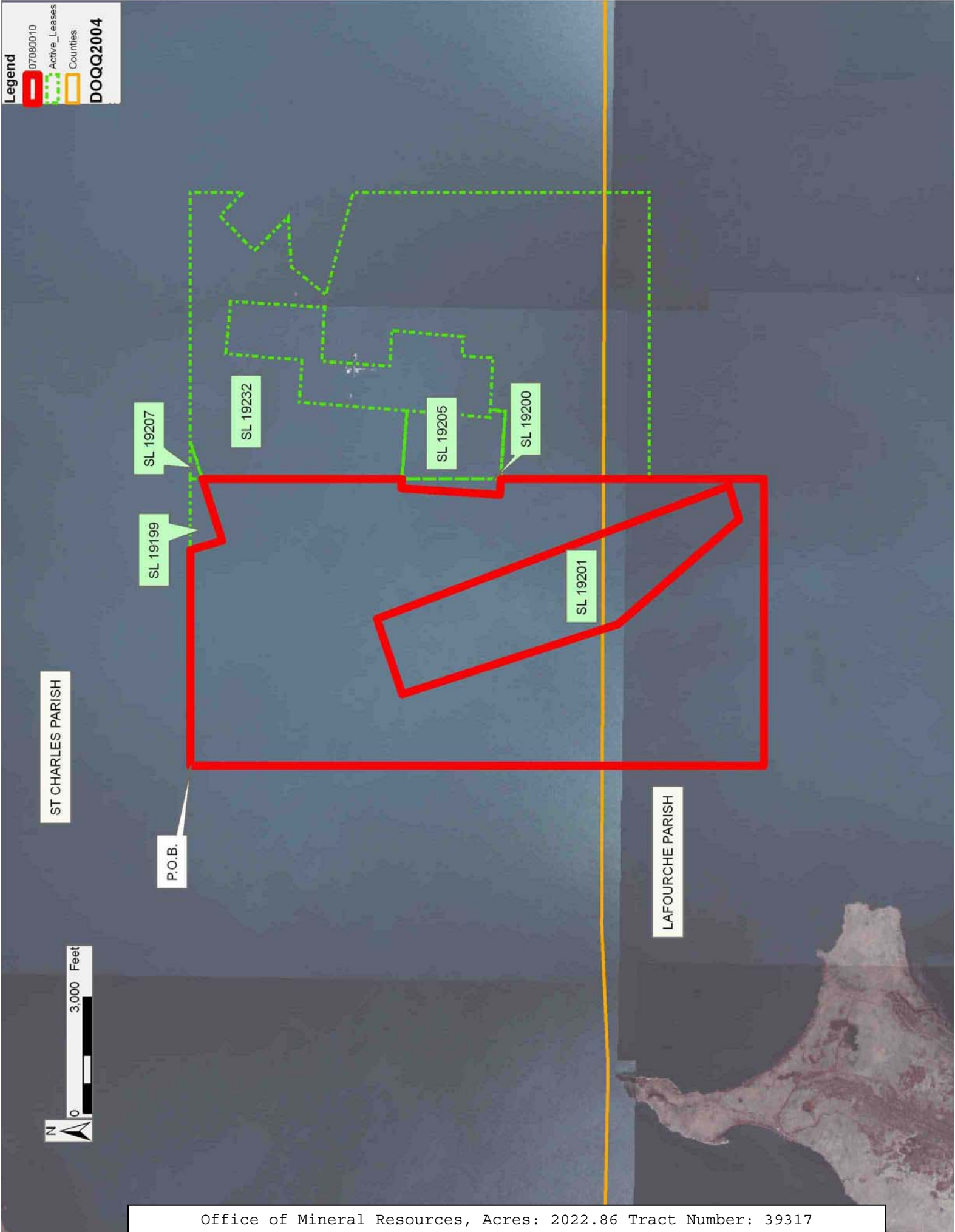
NOTE: The State of Louisiana does hereby reserve, and this lease shall be subject to, the imprescriptible right of surface use in the nature of a servitude in favor of the Department of Natural Resources, including its Offices and Commissions, for the sole purpose of implementing, constructing, servicing and maintaining approved coastal zone management and/or restoration projects. Utilization of any and all rights derived under this lease by the mineral lessee, its agents, successors or assigns, shall not interfere with nor hinder the reasonable surface use by the Department of Natural Resources, its Offices or Commissions, as herein above reserved.

Applicant: SAXON ENERGY, INC.

Bidder	Cash Payment	Price/ Acre	Rental	Oil	Gas	Other

Legend

- 07080010
- Active_Leases
- Counties
- DOQQ2004



TRACT 39318 - St. Martin and St. Mary Parishes, Louisiana

All of the lands now or formerly constituting the beds and bottoms of all water bodies of every nature and description as to which title is vested in the State of Louisiana, together with all islands arising therein and other lands formed by accretion or by reliction, where allowed by law, excepting tax adjudicated lands, and not presently under mineral lease on August 8, 2007, situated in St. Martin and St. Mary Parishes, Louisiana, and more particularly described as follows: Beginning at a point having Coordinates of X = 2,053,003.00 and Y = 386,011.55; thence East 10,637.00 feet to a point having Coordinates of X = 2,063,640.00 and Y = 386,011.55; thence South 11,094.55 feet to the most North Northeast corner of State Lease No. 18620 having Coordinates of X = 2,063,640.00 and Y = 374,917.00; thence along the Northerly boundary of said State Lease No. 18620 the following courses and distances: thence West 1,434.00 feet to a corner having Coordinates of X = 2,062,206.00 and Y = 374,917.00 and South 39 degrees 40 minutes 46 seconds West 1,375.99 feet to a point having Coordinates of X = 2,061,327.44 and Y = 373,858.00; thence West 8,324.44 feet to a point having Coordinates of X = 2,053,003.00 and Y = 373,858.00; thence North 12,153.55 feet to the point of beginning, containing approximately **2,500 acres**, all as more particularly outlined on a plat on file in the Office of Mineral Resources, Department of Natural Resources. All bearings, distances and coordinates are based on Louisiana Coordinate System of 1927, (North or South Zone), where applicable.

NOTE: The above description of the Tract nominated for lease has been provided and corrected, where required, exclusively by the nomination party. Any mineral lease selected from this Tract and awarded by the Louisiana State Mineral Board shall be without warranty of any kind, either express, implied, or statutory, including, but not limited to, the implied warranties of merchantability and fitness for a particular purpose. Should the mineral lease awarded by the Louisiana State Mineral Board be subsequently modified, cancelled or abrogated due to the existence of conflicting leases, operating agreements, private claims or other future obligations or conditions which may affect all or any portion of the leased Tract, it shall not relieve the Lessee of the obligation to pay any bonus due thereon to the Louisiana State Mineral Board, nor shall the Louisiana State Mineral Board be obligated to refund any consideration paid by the Lessor prior to such modification, cancellation, or abrogation, including, but not limited to, bonuses, rentals and royalties.


NOTE: The State of Louisiana does hereby reserve, and this lease shall be subject to, the imprescriptible right of surface use in the nature of a servitude in favor of the Department of Natural Resources, including its Offices and Commissions, for the sole purpose of implementing, constructing, servicing and maintaining approved coastal zone management and/or restoration projects. Utilization of any and all rights derived under this lease by the mineral lessee, its agents, successors or assigns, shall not interfere with nor hinder the reasonable surface use by the


Department of Natural Resources, its Offices or Commissions, as herein above reserved.


Applicant: THEOPHILUS OIL, GAS & LAND SERVICES, LLC

Bidder	Cash Payment	Price/ Acre	Rental	Oil	Gas	Other

Legend

 07080056

 Active_Leases

 Counties

DOQQ2004



TRACT 39319 - St. Mary Parish, Louisiana

All of the lands now or formerly constituting the beds and bottoms of all water bodies of every nature and description as to which title is vested in the State of Louisiana, together with all islands arising therein and other lands formed by accretion or by reliction, where allowed by law, excepting tax adjudicated lands, and not presently under mineral lease on August 8, 2007, situated in St. Mary Parish, Louisiana, and more particularly described as follows: Beginning at a point having Coordinates of X = 2,013,628.00 and Y = 385,328.55; thence East 9,214.36 feet to the Northwest corner of State Lease No. 17989 having Coordinates of X = 2,022,842.36 and Y = 385,328.55; thence South 3,179.20 feet along the West boundary of said State Lease No. 17989 to its Southwest corner having Coordinates of X = 2,022,842.36 and Y = 382,149.35; thence East 4,895.55 feet along the South boundary of said State Lease No. 17989 to its Southeast corner, also being the Southwest corner of State Lease No. 17988 having Coordinates of X = 2,027,737.91 and Y = 382,149.35; thence South 8,291.35 feet to a point having Coordinates of X = 2,027,737.91 and Y = 373,858.00; thence West approximately 14,186 feet to a point on the East boundary of State Lease No. 1685, as amended, having a Coordinate of Y = 373,858.00; thence Northerly approximately 10,223 feet along the East boundary of said State Lease No. 1685 to its Northeast corner; thence Northeasterly approximately 1,262 feet to the point of beginning, **LESS AND EXCEPT** any portion of State Lease No. 1685, as amended, that may lie within the above described tract, containing approximately **142 acres**, all as more particularly outlined on a plat on file in the Office of Mineral Resources, Department of Natural Resources. All bearings, distances and coordinates are based on Louisiana Coordinate System of 1927, (North or South Zone), where applicable.

NOTE: The above description of the Tract nominated for lease has been provided and corrected, where required, exclusively by the nomination party. Any mineral lease selected from this Tract and awarded by the Louisiana State Mineral Board shall be without warranty of any kind, either express, implied, or statutory, including, but not limited to, the implied warranties of merchantability and fitness for a particular purpose. Should the mineral lease awarded by the Louisiana State Mineral Board be subsequently modified, cancelled or abrogated due to the existence of conflicting leases, operating agreements, private claims or other future obligations or conditions which may affect all or any portion of the leased Tract, it shall not relieve the Lessee of the obligation to pay any bonus due thereon to the Louisiana State Mineral Board, nor shall the Louisiana State Mineral Board be obligated to refund any consideration paid by the Lessor prior to such modification, cancellation, or abrogation, including, but not limited to, bonuses, rentals and royalties.

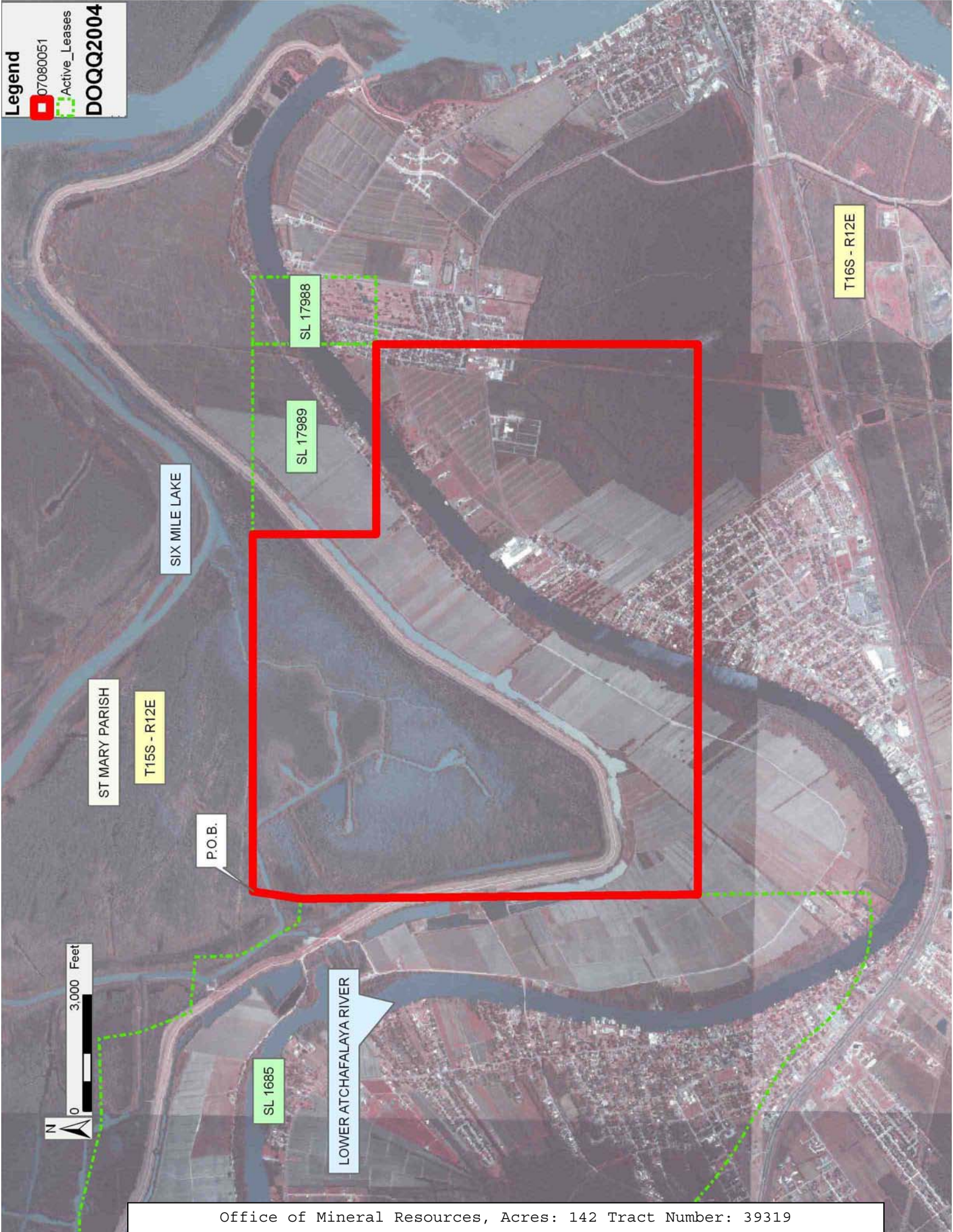
NOTE: The State of Louisiana does hereby reserve, and this lease shall be subject to, the imprescriptible right of surface use in the nature of a servitude in favor of the Department of Natural Resources, including its Offices and Commissions, for the sole purpose of implementing,

constructing, servicing and maintaining approved coastal zone management and/or restoration projects. Utilization of any and all rights derived under this lease by the mineral lessee, its agents, successors or assigns, shall not interfere with nor hinder the reasonable surface use by the Department of Natural Resources, its Offices or Commissions, as herein above reserved.

Applicant: THEOPHILUS OIL, GAS & LAND SERVICES, LLC

Bidder	Cash Payment	Price/ Acre	Rental	Oil	Gas	Other

Legend
07080051
Active_Leases
DOQQ2004



TRACT 39320 - St. Mary Parish, Louisiana

All of the lands now or formerly constituting the beds and bottoms of all water bodies of every nature and description as to which title is vested in the State of Louisiana, together with all islands arising therein and other lands formed by accretion or by reliction, where allowed by law, excepting tax adjudicated lands, and not presently under mineral lease on August 8, 2007, situated in St. Mary Parish, Louisiana, and more particularly described as follows: Beginning at a point having Coordinates of X = 2,038,444.00 and Y = 382,149.35; thence East 14,559.00 feet to a point having Coordinates of X = 2,053,003.00 and Y = 382,149.35; thence South 8,291.35 feet to a point having Coordinates of X = 2,053,003.00 and Y = 373,858.00; thence West 14,559.00 feet to a point having Coordinates of X = 2,038,444.00 and Y = 373,858.00; thence North 8,291.35 feet to the point of beginning, containing approximately **670 acres**, all as more particularly outlined on a plat on file in the Office of Mineral Resources, Department of Natural Resources. All bearings, distances and coordinates are based on Louisiana Coordinate System of 1927, (North or South Zone), where applicable.

NOTE: The above description of the Tract nominated for lease has been provided and corrected, where required, exclusively by the nomination party. Any mineral lease selected from this Tract and awarded by the Louisiana State Mineral Board shall be without warranty of any kind, either express, implied, or statutory, including, but not limited to, the implied warranties of merchantability and fitness for a particular purpose. Should the mineral lease awarded by the Louisiana State Mineral Board be subsequently modified, cancelled or abrogated due to the existence of conflicting leases, operating agreements, private claims or other future obligations or conditions which may affect all or any portion of the leased Tract, it shall not relieve the Lessee of the obligation to pay any bonus due thereon to the Louisiana State Mineral Board, nor shall the Louisiana State Mineral Board be obligated to refund any consideration paid by the Lessor prior to such modification, cancellation, or abrogation, including, but not limited to, bonuses, rentals and royalties.

NOTE: The State of Louisiana does hereby reserve, and this lease shall be subject to, the imprescriptible right of surface use in the nature of a servitude in favor of the Department of Natural Resources, including its Offices and Commissions, for the sole purpose of implementing, constructing, servicing and maintaining approved coastal zone management and/or restoration projects. Utilization of any and all rights derived under this lease by the mineral lessee, its agents, successors or assigns, shall not interfere with nor hinder the reasonable surface use by the Department of Natural Resources, its Offices or Commissions, as herein above reserved.

Applicant: THEOPHILUS OIL, GAS & LAND SERVICES, LLC

Bidder	Cash Payment	Price/ Acre	Rental	Oil	Gas	Other

Legend

- 07080044
- Tracts
- Active_Leases
- DOQQ2004



TRACT 39321 - St. Mary Parish, Louisiana

All of the lands now or formerly constituting the beds and bottoms of all water bodies of every nature and description as to which title is vested in the State of Louisiana, together with all islands arising therein and other lands formed by accretion or by reliction, where allowed by law, excepting tax adjudicated lands, and not presently under mineral lease on August 8, 2007, situated in St. Mary Parish, Louisiana, and more particularly described as follows: Beginning at the Southeast corner of State Lease No. 17989, also being the Southwest corner of State Lease No. 17988 having Coordinates of X = 2,027,737.91 and Y = 382,149.35; thence East 1,735.96 feet along the South boundary of said State Lease No. 17988 to its Southeast corner, also being the Southwest corner of State Lease No. 18540 having Coordinates of X = 2,029,473.87 and Y = 382,149.35; thence East 8,970.13 feet along the South boundary of said State Lease No. 18540 to its Southeast corner having Coordinates of X = 2,038,444.00 and Y = 382,149.35; thence South 8,291.35 feet to a point having Coordinates of X = 2,038,444.00 and Y = 373,858.00; thence West 10,706.09 feet to a point having Coordinates of X = 2,027,737.91 and Y = 373,858.00; thence North 8,291.35 feet to the point of beginning, containing approximately **350 acres**, all as more particularly outlined on a plat on file in the Office of Mineral Resources, Department of Natural Resources. All bearings, distances and coordinates are based on Louisiana Coordinate System of 1927, (North or South Zone), where applicable.

NOTE: The above description of the Tract nominated for lease has been provided and corrected, where required, exclusively by the nomination party. Any mineral lease selected from this Tract and awarded by the Louisiana State Mineral Board shall be without warranty of any kind, either express, implied, or statutory, including, but not limited to, the implied warranties of merchantability and fitness for a particular purpose. Should the mineral lease awarded by the Louisiana State Mineral Board be subsequently modified, cancelled or abrogated due to the existence of conflicting leases, operating agreements, private claims or other future obligations or conditions which may affect all or any portion of the leased Tract, it shall not relieve the Lessee of the obligation to pay any bonus due thereon to the Louisiana State Mineral Board, nor shall the Louisiana State Mineral Board be obligated to refund any consideration paid by the Lessor prior to such modification, cancellation, or abrogation, including, but not limited to, bonuses, rentals and royalties.

NOTE: The State of Louisiana does hereby reserve, and this lease shall be subject to, the imprescriptible right of surface use in the nature of a servitude in favor of the Department of Natural Resources, including its Offices and Commissions, for the sole purpose of implementing, constructing, servicing and maintaining approved coastal zone management and/or restoration projects. Utilization of any and all rights derived under this lease by the mineral lessee, its agents, successors or assigns, shall not interfere with nor hinder the reasonable surface use by the

Department of Natural Resources, its Offices or Commissions, as herein above reserved.

Applicant: THEOPHILUS OIL, GAS & LAND SERVICES, LLC

Bidder	Cash Payment	Price/ Acre	Rental	Oil	Gas	Other

Legend
07080049
Tracts
Active_Leases
DOQQ2004



TRACT 39322 - Lafourche Parish, Louisiana

All of the lands now or formerly constituting the beds and bottoms of all water bodies of every nature and description as to which title is vested in the State of Louisiana, together with all islands arising therein and other lands formed by accretion or by reliction, where allowed by law, excepting tax adjudicated lands, and not presently under mineral lease on August 8, 2007, situated in Lafourche Parish, Louisiana, and more particularly described as follows: Beginning at a point having Coordinates of X = 2,334,434.00 and Y = 370,358.00; thence East 18,451.00 feet to a point having Coordinates of X = 2,352,885.00 and Y = 370,358.00; thence South 6,322.00 feet to a point having Coordinates of X = 2,352,885.00 and Y = 364,036.00; thence West 18,391.05 feet to a point on the East boundary of State Lease No. 18468 having Coordinates of X = 2,334,493.95 and Y = 364,036.00; thence North 00 degrees 57 minutes 20 seconds West 3,594.50 feet along the East boundary of said State Lease No. 18468 to its Northeast corner having Coordinates of X = 2,334,434.00 and Y = 367,630.00; thence North 2,728.00 feet to the point of beginning, containing approximately **2,500 acres**, all as more particularly outlined on a plat on file in the Office of Mineral Resources, Department of Natural Resources. All bearings, distances and coordinates are based on Louisiana Coordinate System of 1927, (North or South Zone), where applicable.

NOTE: The above description of the Tract nominated for lease has been provided and corrected, where required, exclusively by the nomination party. Any mineral lease selected from this Tract and awarded by the Louisiana State Mineral Board shall be without warranty of any kind, either express, implied, or statutory, including, but not limited to, the implied warranties of merchantability and fitness for a particular purpose. Should the mineral lease awarded by the Louisiana State Mineral Board be subsequently modified, cancelled or abrogated due to the existence of conflicting leases, operating agreements, private claims or other future obligations or conditions which may affect all or any portion of the leased Tract, it shall not relieve the Lessee of the obligation to pay any bonus due thereon to the Louisiana State Mineral Board, nor shall the Louisiana State Mineral Board be obligated to refund any consideration paid by the Lessor prior to such modification, cancellation, or abrogation, including, but not limited to, bonuses, rentals and royalties.

NOTE: The State of Louisiana does hereby reserve, and this lease shall be subject to, the imprescriptible right of surface use in the nature of a servitude in favor of the Department of Natural Resources, including its Offices and Commissions, for the sole purpose of implementing, constructing, servicing and maintaining approved coastal zone management and/or restoration projects. Utilization of any and all rights derived under this lease by the mineral lessee, its agents, successors or assigns, shall not interfere with nor hinder the reasonable surface use by the Department of Natural Resources, its Offices or Commissions, as herein above reserved.

Applicant: SAXON ENERGY, INC.

Bidder	Cash Payment	Price/ Acre	Rental	Oil	Gas	Other

Legend

 07080012

 Active_Leases

DOQQ2004

ST CHARLES PARISH

T16S - R22E

LAKE SALVADOR

LAFOURCHE PARISH

T16S - R22E

P.O.B.

SL 18468

SL 18472



TRACT 39323 - Lafourche Parish, Louisiana

All of the lands now or formerly constituting the beds and bottoms of all water bodies of every nature and description as to which title is vested in the State of Louisiana, together with all islands arising therein and other lands formed by accretion or by reliction, where allowed by law, excepting tax adjudicated lands, and not presently under mineral lease on August 8, 2007, situated in Lafourche Parish, Louisiana, and more particularly described as follows: Beginning at a point on the East boundary of State Lease No. 18468 having Coordinates of X = 2,334,493.95 and Y = 364,036.00; thence East 18,391.05 feet to a point having Coordinates of X = 2,352,885.00 and Y = 364,036.00; thence South 6,778.00 feet to a point having Coordinates of X = 2,352,885.00 and Y = 357,258.00; thence West 18,278.00 feet to the Southeast corner of State Lease No. 18472 having Coordinates of X = 2,334,607.00 and Y = 357,258.00; thence North 00 degrees 57 minutes 20 seconds West 5,984.83 feet along the East boundary of said State Lease No. 18472 to its Easternmost Northeast corner, also being the Southeast corner of said State Lease No. 18468 having Coordinates of X = 2,334,507.19 and Y = 363,242.00; thence North 00 degrees 57 minutes 20 seconds West 794.11 feet along the East boundary of said State Lease No. 18468 to the point of beginning, containing approximately **487 acres**, all as more particularly outlined on a plat on file in the Office of Mineral Resources, Department of Natural Resources. All bearings, distances and coordinates are based on Louisiana Coordinate System of 1927, (North or South Zone), where applicable.

NOTE: The above description of the Tract nominated for lease has been provided and corrected, where required, exclusively by the nomination party. Any mineral lease selected from this Tract and awarded by the Louisiana State Mineral Board shall be without warranty of any kind, either express, implied, or statutory, including, but not limited to, the implied warranties of merchantability and fitness for a particular purpose. Should the mineral lease awarded by the Louisiana State Mineral Board be subsequently modified, cancelled or abrogated due to the existence of conflicting leases, operating agreements, private claims or other future obligations or conditions which may affect all or any portion of the leased Tract, it shall not relieve the Lessee of the obligation to pay any bonus due thereon to the Louisiana State Mineral Board, nor shall the Louisiana State Mineral Board be obligated to refund any consideration paid by the Lessor prior to such modification, cancellation, or abrogation, including, but not limited to, bonuses, rentals and royalties.

NOTE: The State of Louisiana does hereby reserve, and this lease shall be subject to, the imprescriptible right of surface use in the nature of a servitude in favor of the Department of Natural Resources, including its Offices and Commissions, for the sole purpose of implementing, constructing, servicing and maintaining approved coastal zone management and/or restoration projects. Utilization of any and all rights derived under this lease by the mineral lessee, its agents, successors or assigns, shall not interfere with nor hinder the reasonable surface use by the

Department of Natural Resources, its Offices or Commissions, as herein above reserved.

Applicant: SAXON ENERGY, INC.

Bidder	Cash Payment	Price/ Acre	Rental	Oil	Gas	Other



TRACT 39324 - Portion of Blocks 17, and 32, Breton Sound Area, Plaquemines Parish, Louisiana

All of the lands now or formerly constituting the beds and bottoms of all water bodies of every nature and description as to which title is vested in the State of Louisiana, together with all islands arising therein and other lands formed by accretion or by reliction, where allowed by law, excepting tax adjudicated lands, and not presently under mineral lease on August 8, 2007, situated in Plaquemines Parish, Louisiana, and more particularly described as follows: Beginning at a point on the West line of Block 17, Breton Sound Area, having Coordinates of X = 2,635,350.00 and Y = 339,848.50; thence East 14,750.00 feet to a point on the East line of said Block 17 having Coordinates of X = 2,650,100.00 and Y = 339,848.50; thence South 8,426.50 feet to a point on the East line of Block 32, Breton Sound Area, having Coordinates of X = 2,650,100.00 and Y = 331,422.00; thence West 3,500.00 feet to the Northeast corner of State Lease No. 1227, as amended, having Coordinates of X = 2,646,600.00 and Y = 331,422.00; thence along the boundary of said State Lease No. 1227 the following courses: Northwesterly along an arc to the left having a radius of 33,940.00 feet and a center at X = 2,631,368.13 and Y = 301,091.92 to a point having Coordinates of X = 2,639,350.00 and Y = 334,080.00 and West 4,000.00 feet to its Northwest corner, also being a point on the West line of said Block 32, also being a point on the East boundary of State Lease No. 4708, as amended, having Coordinates of X = 2,635,350.00 and Y = 334,080.00; thence North 1,100.00 feet along the East boundary of said State Lease No. 4708 to its Northeast corner having Coordinates of X = 2,635,350.00 and Y = 335,180.00; thence North 4,668.50 feet to the point of beginning, containing approximately **2,362.00 acres**, all as more particularly outlined on a plat on file in the Office of Mineral Resources, Department of Natural Resources. All bearings, distances and coordinates are based on Louisiana Coordinate System of 1927, (North or South Zone), where applicable.

NOTE: The above description of the Tract nominated for lease has been provided and corrected, where required, exclusively by the nomination party. Any mineral lease selected from this Tract and awarded by the Louisiana State Mineral Board shall be without warranty of any kind, either express, implied, or statutory, including, but not limited to, the implied warranties of merchantability and fitness for a particular purpose. Should the mineral lease awarded by the Louisiana State Mineral Board be subsequently modified, cancelled or abrogated due to the existence of conflicting leases, operating agreements, private claims or other future obligations or conditions which may affect all or any portion of the leased Tract, it shall not relieve the Lessee of the obligation to pay any bonus due thereon to the Louisiana State Mineral Board, nor shall the Louisiana State Mineral Board be obligated to refund any consideration paid by the Lessor prior to such modification, cancellation, or abrogation, including, but not limited to, bonuses, rentals and royalties.

NOTE: The State of Louisiana does hereby reserve, and this lease shall be subject to, the imprescriptible right of surface use in the nature of a servitude in favor of the Department of Natural Resources, including its Offices and Commissions, for the sole purpose of implementing, constructing, servicing and maintaining approved coastal zone management and/or restoration projects. Utilization of any and all rights derived under this lease by the mineral lessee, its agents, successors or assigns, shall not interfere with nor hinder the reasonable surface use by the Department of Natural Resources, its Offices or Commissions, as herein above reserved.

Applicant: CYPRESS ENERGY CORPORATION

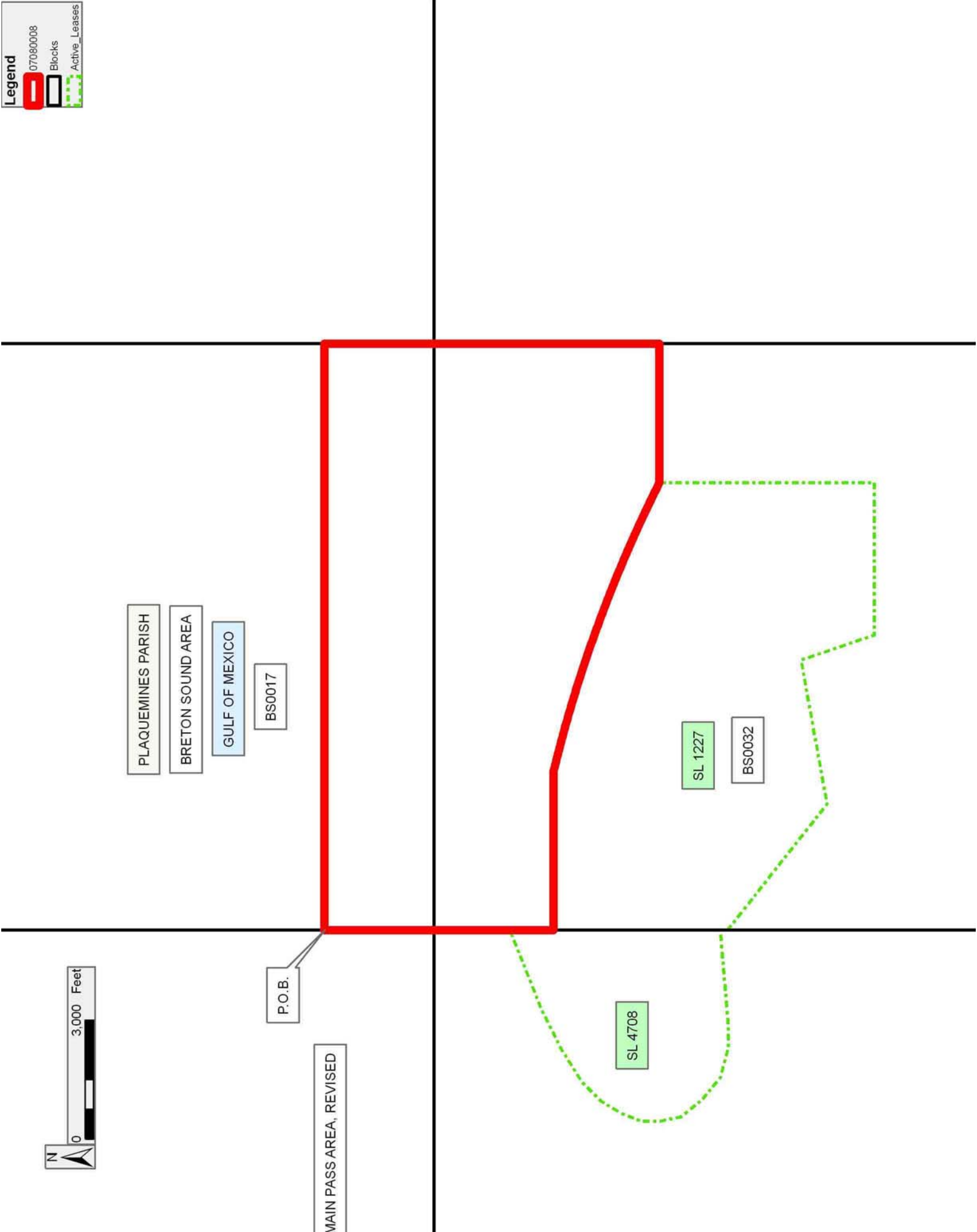
Bidder	Cash Payment	Price/ Acre	Rental	Oil	Gas	Other

Legend

07080008

Blocks

Active_Leases



TRACT 39325 - Portion of Blocks 16, and 21, Main Pass Area, Revised, Plaquemines Parish, Louisiana

All of the lands now or formerly constituting the beds and bottoms of all water bodies of every nature and description as to which title is vested in the State of Louisiana, together with all islands arising therein and other lands formed by accretion or by reliction, where allowed by law, excepting tax adjudicated lands, and not presently under mineral lease on August 8, 2007, situated in Plaquemines Parish, Louisiana, and more particularly described as follows: Beginning at a point within Block 16, Main Pass Area, Revised, having Coordinates of X = 2,622,358.78 and Y = 339,848.50; thence East 12,991.22 feet to a point on the East line of said Block 16 having Coordinates of X = 2,635,350.00 and Y = 339,848.50; thence South 4,668.50 feet to a point on the East line of Block 21, Main Pass Area, Revised, also being the Northeast corner of State Lease No. 4708, as amended, having Coordinates of X = 2,635,350.00 and Y = 335,180.00; thence along the boundary of said State Lease No. 4708 the following courses: South 68 degrees 11 minutes 55 seconds West 2,154.07 feet; South 63 degrees 26 minutes 06 seconds West 1,118.03 feet; South 57 degrees 59 minutes 41 seconds West 943.40 feet; South 45 degrees 00 minutes 00 seconds West 707.11 feet; South 30 degrees 57 minutes 50 seconds West 583.10 feet; South 21 degrees 48 minutes 05 seconds West 538.52 feet and South 366.94 feet to the Northeast corner of State Lease No. 15536, as amended, having Coordinates of X = 2,630,550.00 and Y = 331,513.05; thence along the boundary of said State Lease No. 15536 the following courses: West 1,673.00 feet to a point having Coordinates of X = 2,628,877.00 and Y = 331,513.05 and South 1,917.52 feet to a point having Coordinates of X = 2,628,877.00 and Y = 329,595.53; thence West 6,518.22 feet to a point having Coordinates of X = 2,622,358.78 and Y = 329,595.53; thence North 10,252.97 feet to the point of beginning, containing approximately **2,494.84 acres**, all as more particularly outlined on a plat on file in the Office of Mineral Resources, Department of Natural Resources. All bearings, distances and coordinates are based on Louisiana Coordinate System of 1927, (North or South Zone), where applicable.

NOTE: The above description of the Tract nominated for lease has been provided and corrected, where required, exclusively by the nomination party. Any mineral lease selected from this Tract and awarded by the Louisiana State Mineral Board shall be without warranty of any kind, either express, implied, or statutory, including, but not limited to, the implied warranties of merchantability and fitness for a particular purpose. Should the mineral lease awarded by the Louisiana State Mineral Board be subsequently modified, cancelled or abrogated due to the existence of conflicting leases, operating agreements, private claims or other future obligations or conditions which may affect all or any portion of the leased Tract, it shall not relieve the Lessee of the obligation to pay any bonus due thereon to the Louisiana State Mineral Board, nor shall the Louisiana State Mineral Board be obligated to refund any consideration paid by the Lessor prior to such modification, cancellation, or abrogation, including, but not limited to, bonuses, rentals and royalties.

NOTE: The State of Louisiana does hereby reserve, and this lease shall be subject to, the imprescriptible right of surface use in the nature of a servitude in favor of the Department of Natural Resources, including its Offices and Commissions, for the sole purpose of implementing, constructing, servicing and maintaining approved coastal zone management and/or restoration projects. Utilization of any and all rights derived under this lease by the mineral lessee, its agents, successors or assigns, shall not interfere with nor hinder the reasonable surface use by the Department of Natural Resources, its Offices or Commissions, as herein above reserved.

Applicant: CYPRESS ENERGY CORPORATION

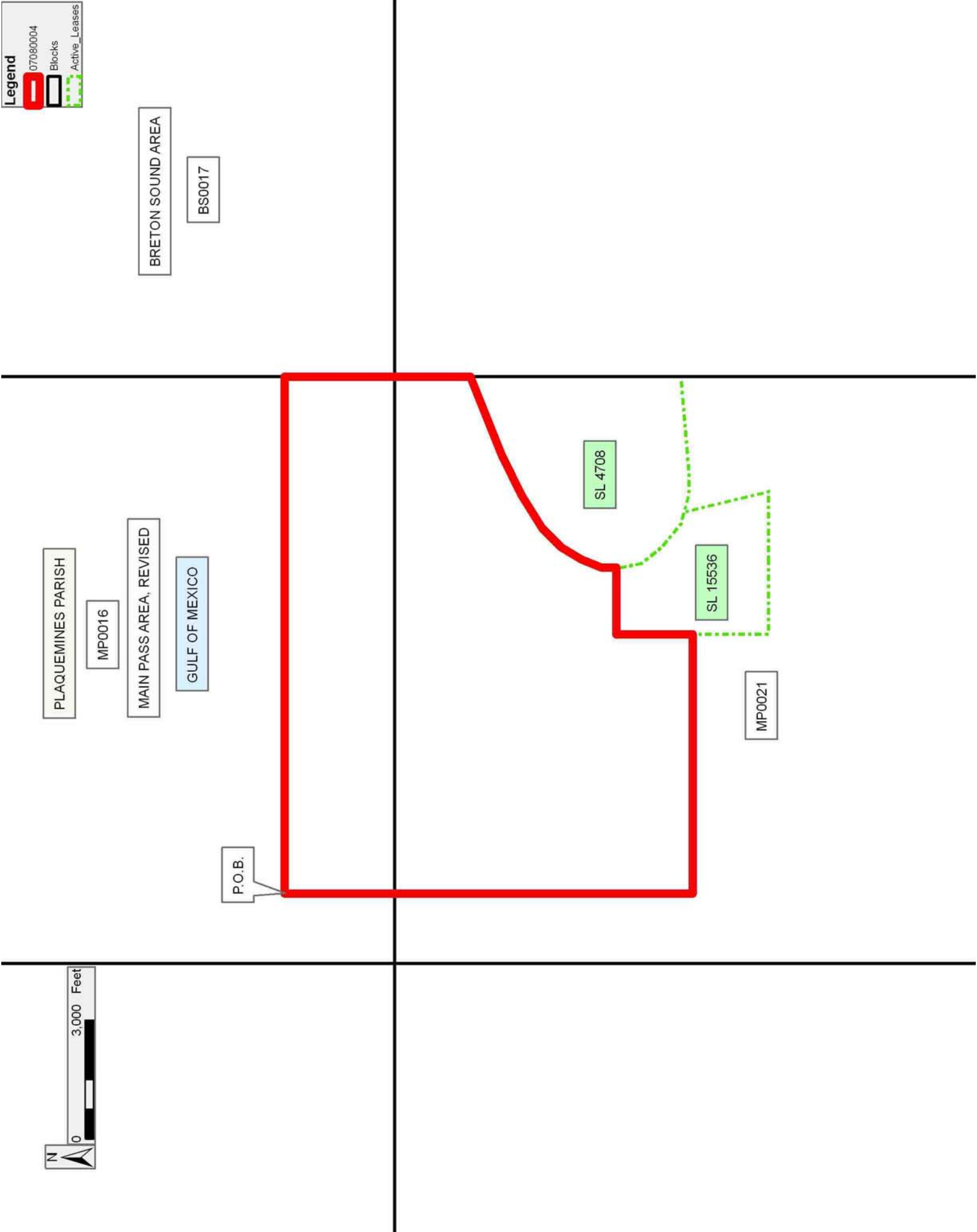
Bidder	Cash Payment	Price/ Acre	Rental	Oil	Gas	Other

Legend

07080004

Blocks

Active_Leases



TRACT 39326 - Vermilion Parish, Louisiana

All of the lands now or formerly constituting the beds and bottoms of all water bodies of every nature and description as to which title is vested in the State of Louisiana, together with all islands arising therein and other lands formed by accretion or by reliction, where allowed by law, excepting tax adjudicated lands, and not presently under mineral lease on August 8, 2007, situated in Vermilion Parish, Louisiana, and more particularly described as follows: Beginning at a point having Coordinates of X = 1,631,020.35 and Y = 349,390.00; thence South 11,720.35 feet to a point having Coordinates of X = 1,631,020.35 and Y = 337,669.65; thence Westerly approximately 2,573 feet to the Northeast corner of State Lease No. 19119, also being a point on the boundary of the Rockefeller Wildlife Refuge; thence Westerly approximately 751 feet along the boundary of said Rockefeller Wildlife Refuge, and along the North boundary of said State Lease No. 19119 to its Northwest corner having a Coordinate of X = 1,627,696.00; thence along the boundary of said Rockefeller Wildlife Refuge the following courses: Westerly approximately 4,667 feet and Northerly approximately 11,717 feet to a point having a Coordinate of Y = 349,390.00; thence East 7,889.62 feet to the point of beginning, **LESS AND EXCEPT** that portion, if any, of State Lease No. 19119 that may lie within the above described tract, **ALSO LESS AND EXCEPT** any portion of the above described tract which may fall inside the boundaries of the Rockefeller Wildlife Refuge, containing approximately **9 acres**, all as more particularly outlined on a plat on file in the Office of Mineral Resources, Department of Natural Resources. All bearings, distances and coordinates are based on Louisiana Coordinate System of 1927, (North or South Zone), where applicable.

NOTE: The above description of the Tract nominated for lease has been provided and corrected, where required, exclusively by the nomination party. Any mineral lease selected from this Tract and awarded by the Louisiana State Mineral Board shall be without warranty of any kind, either express, implied, or statutory, including, but not limited to, the implied warranties of merchantability and fitness for a particular purpose. Should the mineral lease awarded by the Louisiana State Mineral Board be subsequently modified, cancelled or abrogated due to the existence of conflicting leases, operating agreements, private claims or other future obligations or conditions which may affect all or any portion of the leased Tract, it shall not relieve the Lessee of the obligation to pay any bonus due thereon to the Louisiana State Mineral Board, nor shall the Louisiana State Mineral Board be obligated to refund any consideration paid by the Lessor prior to such modification, cancellation, or abrogation, including, but not limited to, bonuses, rentals and royalties.

NOTE: The Office of Mineral Resources will require a minimum bonus of \$350 per acre and a minimum royalty of 25%.

NOTE: The State of Louisiana does hereby reserve, and this lease shall be subject to, the imprescriptible right of surface use in the nature of a

servitude in favor of the Department of Natural Resources, including its Offices and Commissions, for the sole purpose of implementing, constructing, servicing and maintaining approved coastal zone management and/or restoration projects. Utilization of any and all rights derived under this lease by the mineral lessee, its agents, successors or assigns, shall not interfere with nor hinder the reasonable surface use by the Department of Natural Resources, its Offices or Commissions, as herein above reserved.

Applicant: MICHAEL G. KRANTZ, JR.

Bidder	Cash Payment	Price/ Acre	Rental	Oil	Gas	Other

Legend

07080017

Wildlife

Active_Leases

DOQQ2004

