

TRACT 39307 - St. Martin Parish, Louisiana

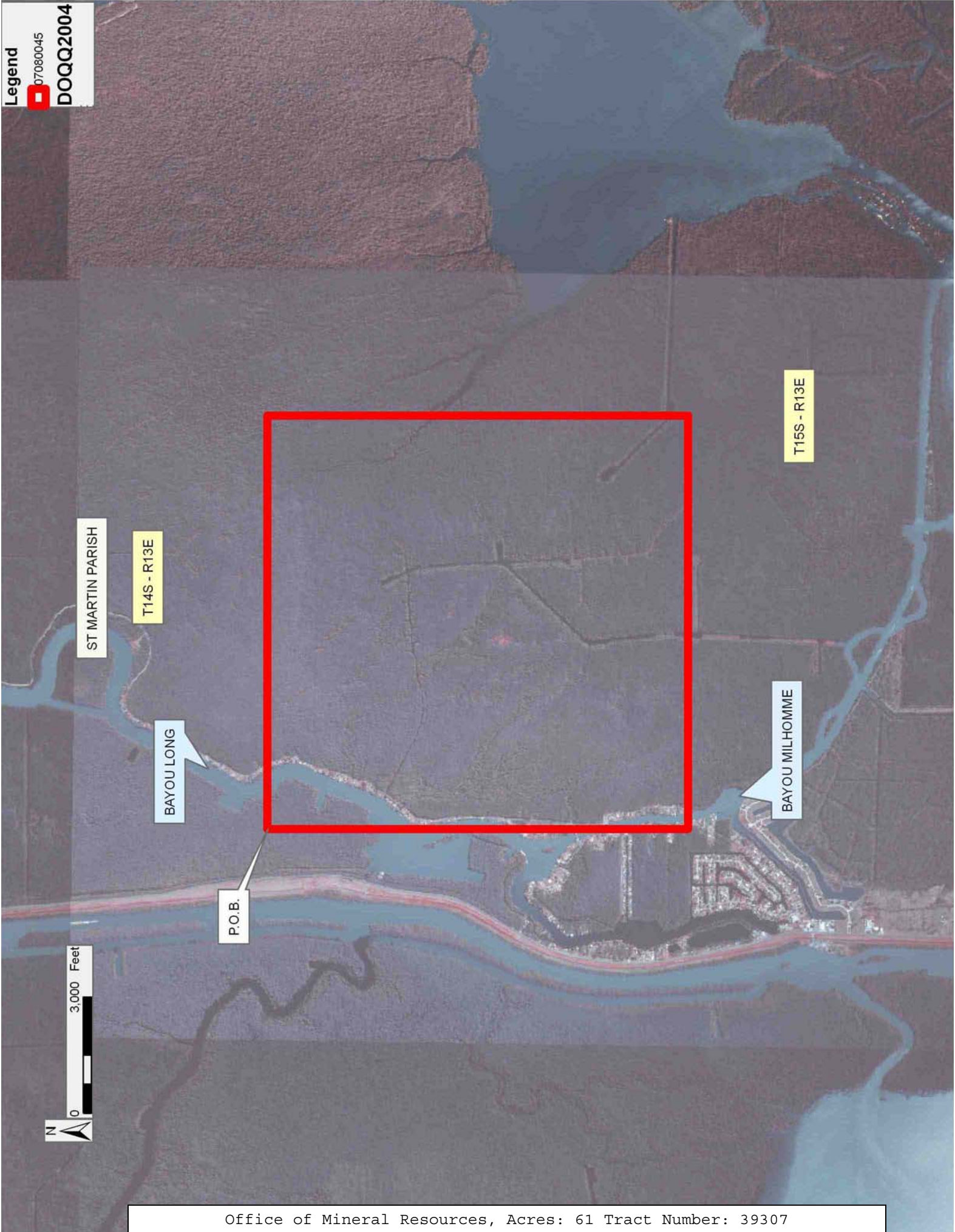
All of the lands now or formerly constituting the beds and bottoms of all water bodies of every nature and description as to which title is vested in the State of Louisiana, together with all islands arising therein and other lands formed by accretion or by reliction, where allowed by law, excepting tax adjudicated lands, and not presently under mineral lease on August 8, 2007, situated in St. Martin Parish, Louisiana, and more particularly described as follows: Beginning at a point having Coordinates of X = 2,053,003.00 and Y = 412,872.00; thence East 10,637.00 feet to a point having Coordinates of X = 2,063,640.00 and Y = 412,872.00; thence South 10,818.00 feet to a point having Coordinates of X = 2,063,640.00 and Y = 402,054.00; thence West 10,637.00 feet to a point having Coordinates of X = 2,053,003.00 and Y = 402,054.00; thence North 10,818.00 feet to the point of beginning, (This lease includes only waterbottoms claimed and owned by the state and specifically excludes any land which the state may claim or own and to which the mineral rights are vested in the state), containing approximately **61 acres**, all as more particularly outlined on a plat on file in the Office of Mineral Resources, Department of Natural Resources. All bearings, distances and coordinates are based on Louisiana Coordinate System of 1927, (North or South Zone), where applicable.

NOTE: The above description of the Tract nominated for lease has been provided and corrected, where required, exclusively by the nomination party. Any mineral lease selected from this Tract and awarded by the Louisiana State Mineral Board shall be without warranty of any kind, either express, implied, or statutory, including, but not limited to, the implied warranties of merchantability and fitness for a particular purpose. Should the mineral lease awarded by the Louisiana State Mineral Board be subsequently modified, cancelled or abrogated due to the existence of conflicting leases, operating agreements, private claims or other future obligations or conditions which may affect all or any portion of the leased Tract, it shall not relieve the Lessee of the obligation to pay any bonus due thereon to the Louisiana State Mineral Board, nor shall the Louisiana State Mineral Board be obligated to refund any consideration paid by the Lessor prior to such modification, cancellation, or abrogation, including, but not limited to, bonuses, rentals and royalties.

NOTE: The State of Louisiana does hereby reserve, and this lease shall be subject to, the imprescriptible right of surface use in the nature of a servitude in favor of the Department of Natural Resources, including its Offices and Commissions, for the sole purpose of implementing, constructing, servicing and maintaining approved coastal zone management and/or restoration projects. Utilization of any and all rights derived under this lease by the mineral lessee, its agents, successors or assigns, shall not interfere with nor hinder the reasonable surface use by the Department of Natural Resources, its Offices or Commissions, as herein above reserved.

Applicant: THEOPHILUS OIL, GAS & LAND SERVICES, LLC

Bidder	Cash Payment	Price/Acre	Rental	Oil	Gas	Other



TRACT 39308 - St. Martin Parish, Louisiana

All of the lands now or formerly constituting the beds and bottoms of all water bodies of every nature and description as to which title is vested in the State of Louisiana, together with all islands arising therein and other lands formed by accretion or by reliction, where allowed by law, excepting tax adjudicated lands, and not presently under mineral lease on August 8, 2007, situated in St. Martin Parish, Louisiana, and more particularly described as follows: Beginning at a point on the South boundary of State Lease No. 19322 having Coordinates of X = 2,027,737.91 and Y = 410,600.00; thence East 2,262.09 feet along the South boundary of said State Lease No. 19322 to its Southeast corner having Coordinates of X = 2,030,000.00 and Y = 410,600.00; thence North 84 degrees 18 minutes 11 seconds East 2,528.49 feet to the Southwest corner of State Lease No. 18961 having Coordinates of X = 2,032,516.00 and Y = 410,851.00; thence East 5,384.00 feet along the South boundary of said State Lease No. 18961 to the Northwest corner of State Lease No. 18335 having Coordinates of X = 2,037,900.00 and Y = 410,851.00; thence South 00 degrees 18 minutes 49 seconds West 5,297.08 feet along the West boundary of said State Lease No. 18335 to its Southwest corner having Coordinates of X = 2,037,871.00 and Y = 405,554.00; thence South 3,500.00 feet to a point having Coordinates of X = 2,037,871.00 and Y = 402,054.00; thence West 10,133.09 feet to a point having Coordinates of X = 2,027,737.91 and Y = 402,054.00; thence North 8,546.00 feet to the point of beginning, containing approximately **100 acres**, all as more particularly outlined on a plat on file in the Office of Mineral Resources, Department of Natural Resources. All bearings, distances and coordinates are based on Louisiana Coordinate System of 1927, (North or South Zone), where applicable.

NOTE: The above description of the Tract nominated for lease has been provided and corrected, where required, exclusively by the nomination party. Any mineral lease selected from this Tract and awarded by the Louisiana State Mineral Board shall be without warranty of any kind, either express, implied, or statutory, including, but not limited to, the implied warranties of merchantability and fitness for a particular purpose. Should the mineral lease awarded by the Louisiana State Mineral Board be subsequently modified, cancelled or abrogated due to the existence of conflicting leases, operating agreements, private claims or other future obligations or conditions which may affect all or any portion of the leased Tract, it shall not relieve the Lessee of the obligation to pay any bonus due thereon to the Louisiana State Mineral Board, nor shall the Louisiana State Mineral Board be obligated to refund any consideration paid by the Lessor prior to such modification, cancellation, or abrogation, including, but not limited to, bonuses, rentals and royalties.

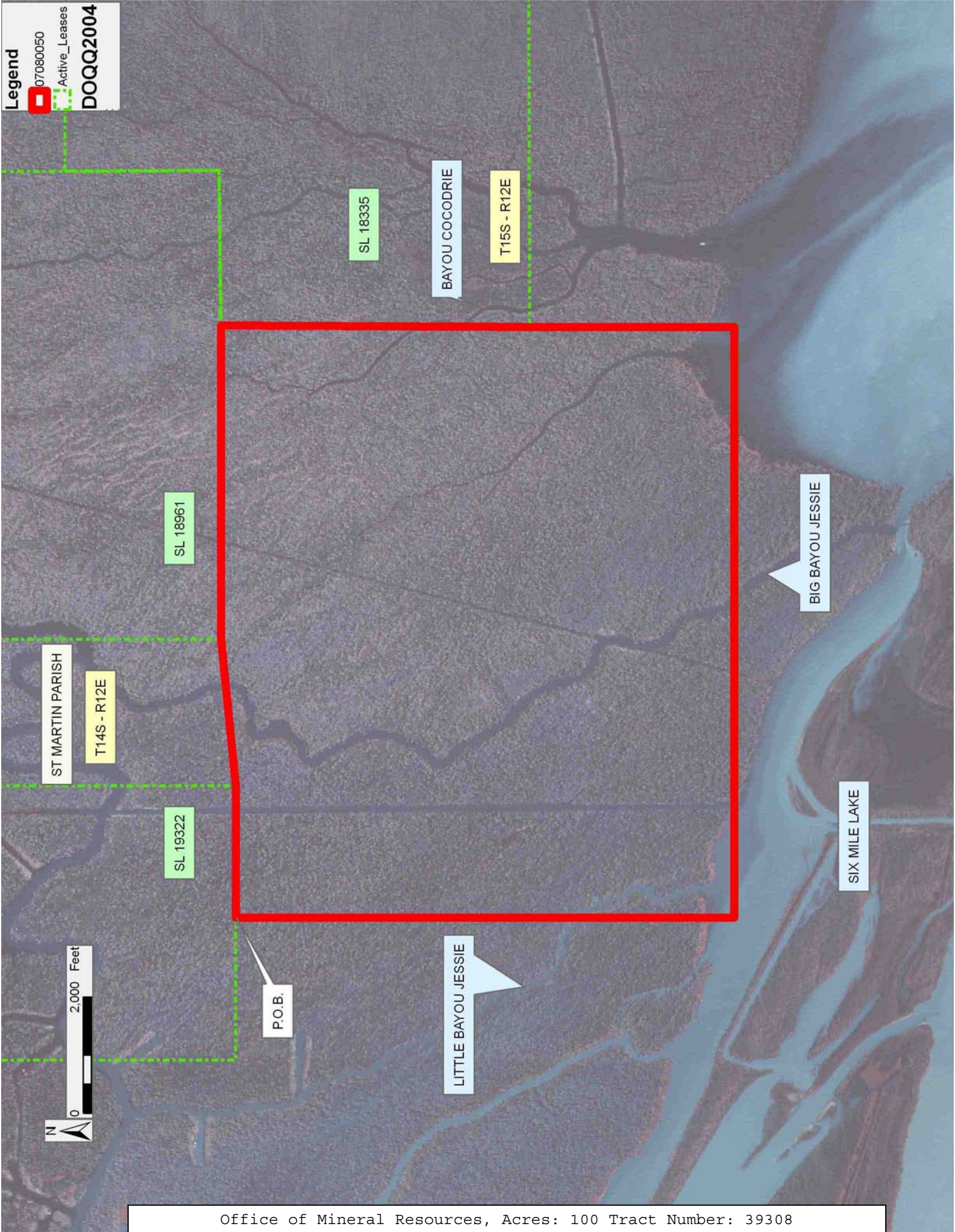
NOTE: The State of Louisiana does hereby reserve, and this lease shall be subject to, the imprescriptible right of surface use in the nature of a servitude in favor of the Department of Natural Resources, including its Offices and Commissions, for the sole purpose of implementing, constructing, servicing and maintaining approved coastal zone management

and/or restoration projects. Utilization of any and all rights derived under this lease by the mineral lessee, its agents, successors or assigns, shall not interfere with nor hinder the reasonable surface use by the Department of Natural Resources, its Offices or Commissions, as herein above reserved.

Applicant: THEOPHILUS OIL, GAS & LAND SERVICES, LLC

Bidder	Cash Payment	Price/Acre	Rental	Oil	Gas	Other

Legend
070800050
Active_Leases
DOQQ2004



TRACT 39309 - St. Martin Parish, Louisiana

All of the lands now or formerly constituting the beds and bottoms of all water bodies of every nature and description as to which title is vested in the State of Louisiana, together with all islands arising therein and other lands formed by accretion or by reliction, where allowed by law, excepting tax adjudicated lands, and not presently under mineral lease on August 8, 2007, situated in St. Martin Parish, Louisiana, and more particularly described as follows: Beginning at a point having Coordinates of X = 2,013,628.00 and Y = 402,054.00; thence Northerly approximately 3,162 feet to the Southeast corner of State Lease No. 711, as amended; thence Northerly approximately 5,384 feet along the East boundary of said State Lease No. 711 to a point having a Coordinate of Y = 410,600.00; thence East approximately 5,491 feet to the Southwest corner of State Lease No. 19300 having Coordinates of X = 2,019,100.00 and Y = 410,600.00; thence East 6,200.00 feet along the South boundary of said State Lease No. 19300 to its Southeast corner and the Southwest corner of State Lease No. 19322 having Coordinates of X = 2,025,300.00 and Y = 410,600.00; thence East 2,437.91 feet along the South boundary of said State Lease No. 19322 to a point having Coordinates of X = 2,027,737.91 and Y = 410,600.00; thence South 8,546.00 feet to a point having Coordinates of X = 2,027,737.91 and Y = 402,054.00; thence West 14,109.91 feet to the point of beginning, **LESS AND EXCEPT** any portion of State Lease No. 711, as amended, that may lie within the above described tract, (This lease includes only waterbottoms claimed and owned by the state and specifically excludes any land which the state may claim or own and to which the mineral rights are vested in the state) containing approximately **640 acres**, all as more particularly outlined on a plat on file in the Office of Mineral Resources, Department of Natural Resources. All bearings, distances and coordinates are based on Louisiana Coordinate System of 1927, (North or South Zone), where applicable.

NOTE: The above description of the Tract nominated for lease has been provided and corrected, where required, exclusively by the nomination party. Any mineral lease selected from this Tract and awarded by the Louisiana State Mineral Board shall be without warranty of any kind, either express, implied, or statutory, including, but not limited to, the implied warranties of merchantability and fitness for a particular purpose. Should the mineral lease awarded by the Louisiana State Mineral Board be subsequently modified, cancelled or abrogated due to the existence of conflicting leases, operating agreements, private claims or other future obligations or conditions which may affect all or any portion of the leased Tract, it shall not relieve the Lessee of the obligation to pay any bonus due thereon to the Louisiana State Mineral Board, nor shall the Louisiana State Mineral Board be obligated to refund any consideration paid by the Lessor prior to such modification, cancellation, or abrogation, including, but not limited to, bonuses, rentals and royalties.

NOTE: The State of Louisiana does hereby reserve, and this lease shall be subject to, the imprescriptible right of surface use in the nature of a

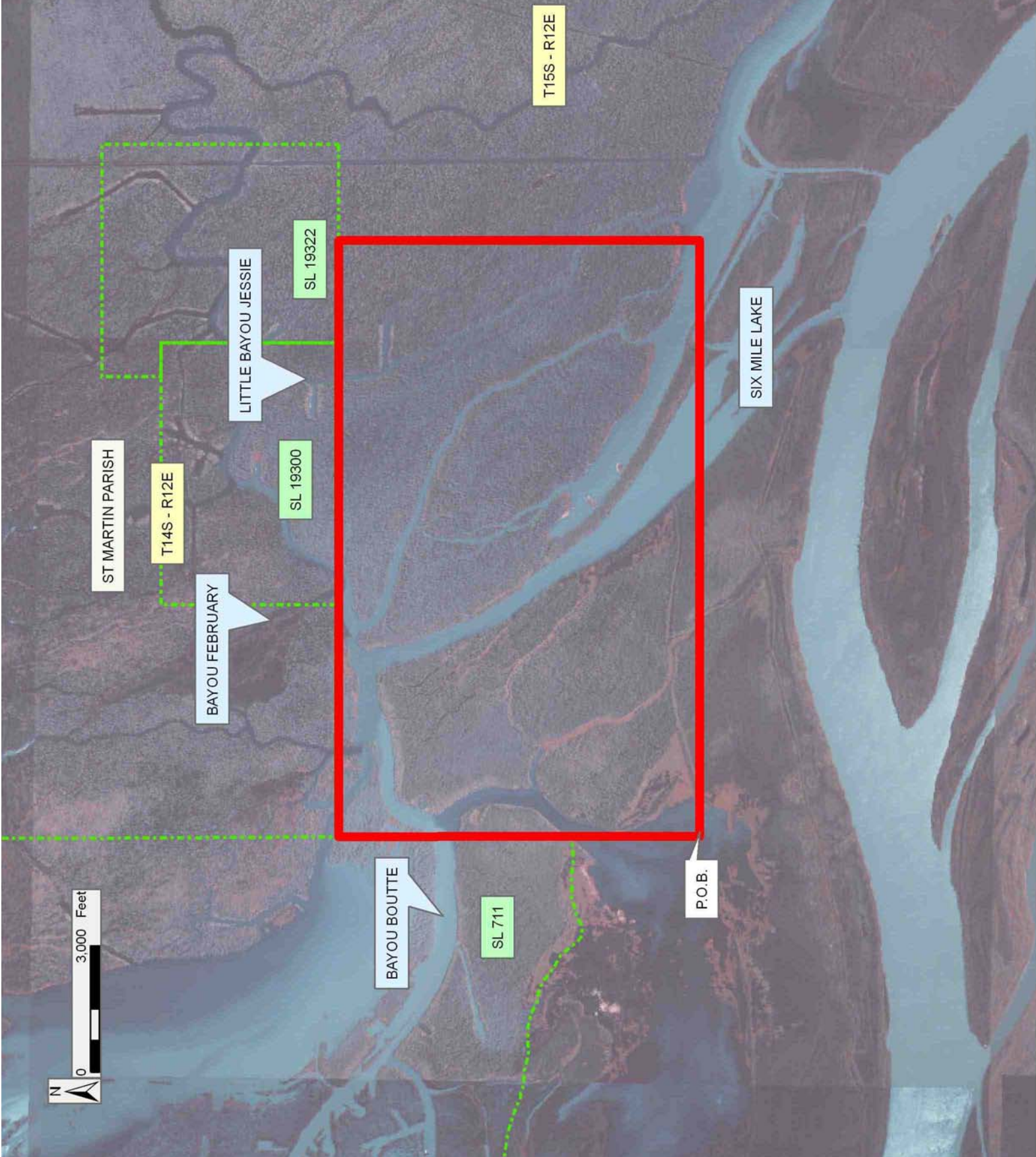
servitude in favor of the Department of Natural Resources, including its Offices and Commissions, for the sole purpose of implementing, constructing, servicing and maintaining approved coastal zone management and/or restoration projects. Utilization of any and all rights derived under this lease by the mineral lessee, its agents, successors or assigns, shall not interfere with nor hinder the reasonable surface use by the Department of Natural Resources, its Offices or Commissions, as herein above reserved.

Applicant: THEOPHILUS OIL, GAS & LAND SERVICES, LLC

Bidder	Cash Payment	Price/Acre	Rental	Oil	Gas	Other

Legend

- 07080053
- Active_Leases
- DOQQ2004



TRACT 39310 - St. Martin and St. Mary Parishes, Louisiana

All of the lands now or formerly constituting the beds and bottoms of all water bodies of every nature and description as to which title is vested in the State of Louisiana, together with all islands arising therein and other lands formed by accretion or by reliction, where allowed by law, excepting tax adjudicated lands, and not presently under mineral lease on August 8, 2007, situated in St. Martin and St. Mary Parishes, Louisiana, and more particularly described as follows: Beginning at a point having Coordinates of X = 2,038,444.00 and Y = 402,054.00; thence East 14,559.00 feet to a point having Coordinates of X = 2,053,003.00 and Y = 402,054.00; thence South 10,074.17 feet to a point having Coordinates of X = 2,053,003.00 and Y = 391,979.83; thence West 14,559.00 feet to a point having Coordinates of X = 2,038,444.00 and Y = 391,979.83; thence North 10,074.17 feet to the point of beginning, containing approximately **1,668 acres**, all as more particularly outlined on a plat on file in the Office of Mineral Resources, Department of Natural Resources. All bearings, distances and coordinates are based on Louisiana Coordinate System of 1927, (North or South Zone), where applicable.

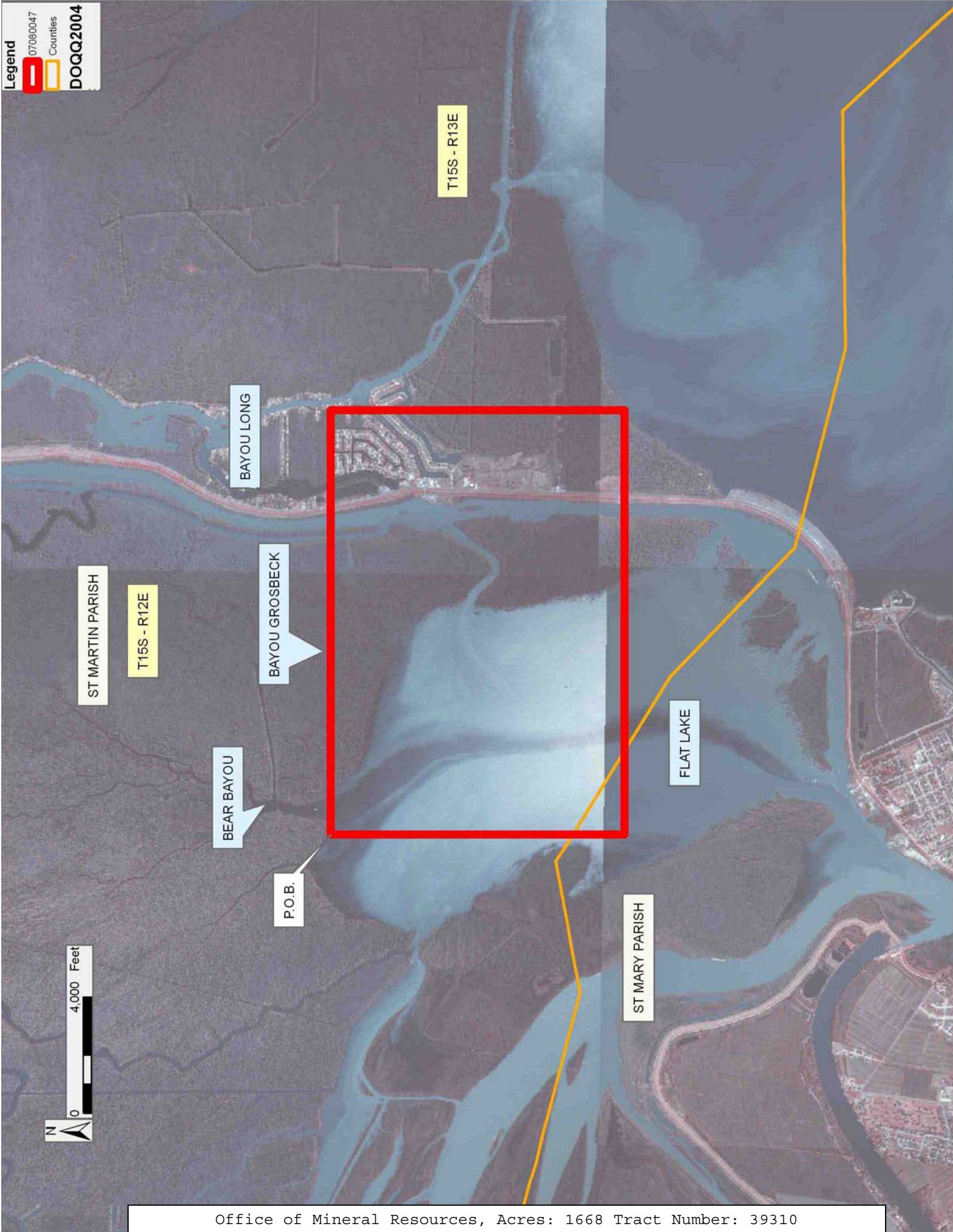
NOTE: The above description of the Tract nominated for lease has been provided and corrected, where required, exclusively by the nomination party. Any mineral lease selected from this Tract and awarded by the Louisiana State Mineral Board shall be without warranty of any kind, either express, implied, or statutory, including, but not limited to, the implied warranties of merchantability and fitness for a particular purpose. Should the mineral lease awarded by the Louisiana State Mineral Board be subsequently modified, cancelled or abrogated due to the existence of conflicting leases, operating agreements, private claims or other future obligations or conditions which may affect all or any portion of the leased Tract, it shall not relieve the Lessee of the obligation to pay any bonus due thereon to the Louisiana State Mineral Board, nor shall the Louisiana State Mineral Board be obligated to refund any consideration paid by the Lessor prior to such modification, cancellation, or abrogation, including, but not limited to, bonuses, rentals and royalties.

NOTE: The State of Louisiana does hereby reserve, and this lease shall be subject to, the imprescriptible right of surface use in the nature of a servitude in favor of the Department of Natural Resources, including its Offices and Commissions, for the sole purpose of implementing, constructing, servicing and maintaining approved coastal zone management and/or restoration projects. Utilization of any and all rights derived under this lease by the mineral lessee, its agents, successors or assigns, shall not interfere with nor hinder the reasonable surface use by the Department of Natural Resources, its Offices or Commissions, as herein above reserved.

Applicant: THEOPHILUS OIL, GAS & LAND SERVICES, LLC

Bidder	Cash Payment	Price/Acre	Rental	Oil	Gas	Other

Legend
07080047
Counties
DOQQ2004



TRACT 39311 - St. Martin Parish, Louisiana

All of the lands now or formerly constituting the beds and bottoms of all water bodies of every nature and description as to which title is vested in the State of Louisiana, together with all islands arising therein and other lands formed by accretion or by reliction, where allowed by law, excepting tax adjudicated lands, and not presently under mineral lease on August 8, 2007, situated in St. Martin Parish, Louisiana, and more particularly described as follows: Beginning at a point having Coordinates of X = 2,053,003.00 and Y = 402,054.00; thence East 10,637.00 feet to a point having Coordinates of X = 2,063,640.00 and Y = 402,054.00; thence South 7,621.06 feet to a point on the Northern boundary of State Lease No. 19020 having Coordinates of X = 2,063,640.00 and Y = 394,432.94; thence along the boundaries of said State Lease No. 19020 the following courses and distances: South 76 degrees 45 minutes 34 seconds West 1,017.04 feet to a corner having Coordinates of X = 2,062,650.00 and Y = 394,200.00, South 12 degrees 12 minutes 02 seconds West 189.28 feet to a corner having Coordinates of X = 2,062,610.00 and Y = 394,015.00, South 06 degrees 54 minutes 40 seconds West 166.21 feet to a corner having Coordinates of X = 2,062,590.00 and Y = 393,850.00, South 06 degrees 00 minutes 32 seconds East 191.05 feet to a corner having Coordinates of X = 2,062,610.00 and Y = 393,660.00, South 10 degrees 47 minutes 04 seconds East 213.78 feet to a corner having Coordinates of X = 2,062,650.00 and Y = 393,450.00, South 22 degrees 42 minutes 52 seconds East 233.08 feet to a corner having Coordinates of X = 2,062,740.00 and Y = 393,235.00, South 34 degrees 21 minutes 16 seconds East 478.46 feet to a corner having Coordinates of X = 2,063,010.00 and Y = 392,840.00, South 41 degrees 31 minutes 54 seconds East 467.55 feet to a corner having Coordinates of X = 2,063,320.00 and Y = 392,490.00, South 35 degrees 57 minutes 38 seconds East 630.08 feet to a corner having Coordinates of X = 2,063,690.00 and Y = 391,980.00, South 31 degrees 45 minutes 34 seconds East 246.98 feet to a corner having Coordinates of X = 2,063,820.00 and Y = 391,770.00, South 11 degrees 18 minutes 36 seconds East 123.75 feet to a corner having Coordinates of X = 2,063,844.27 and Y = 391,648.65, South 36 degrees 23 minutes 04 seconds West 209.49 feet to a point having Coordinates of X = 2,063,720.00 and Y = 391,480.00, South 25 degrees 01 minutes 01 seconds West 331.06 feet to a corner having Coordinates of X = 2,063,580.00 and Y = 391,180.00, South 18 degrees 48 minutes 00 seconds West 496.49 feet to a corner having Coordinates of X = 2,063,420.00 and Y = 390,710.00, South 13 degrees 09 minutes 57 seconds West 1,756.16 feet to a corner having Coordinates of X = 2,063,020.00 and Y = 389,000.00, South 14 degrees 34 minutes 27 seconds West 516.62 feet to a corner having Coordinates of X = 2,062,890.00 and Y = 388,500.00, South 08 degrees 21 minutes 57 seconds West 343.66 feet to a corner having Coordinates of X = 2,062,840.00 and Y = 388,160.00, North 82 degrees 06 minutes 27 seconds East 66.85 feet to a corner having Coordinates of X = 2,062,906.22 and Y = 388,169.18, South 17 degrees 45 minutes 38 seconds West 282.65 feet to a corner having Coordinates of X = 2,062,820.00 and Y = 387,900.00 and North 82 degrees 15 minutes 11 seconds East 827.55 feet to a point having Coordinates of X = 2,063,640.00 and Y = 388,011.55; thence South 2,000.00 feet to a point having Coordinates of X

= 2,063,640.00 and Y = 386,011.55; thence West 10,637.00 feet to a point having Coordinates of X = 2,053,003.00 and Y = 386,011.55; thence North 16,042.45 feet to the point of beginning, (This lease includes only waterbottoms claimed and owned by the state and specifically excludes any land which the state may claim or own and to which the mineral rights are vested in the state), containing approximately **1,897 acres**, all as more particularly outlined on a plat on file in the Office of Mineral Resources, Department of Natural Resources. All bearings, distances and coordinates are based on Louisiana Coordinate System of 1927, (North or South Zone), where applicable.

NOTE: The above description of the Tract nominated for lease has been provided and corrected, where required, exclusively by the nomination party. Any mineral lease selected from this Tract and awarded by the Louisiana State Mineral Board shall be without warranty of any kind, either express, implied, or statutory, including, but not limited to, the implied warranties of merchantability and fitness for a particular purpose. Should the mineral lease awarded by the Louisiana State Mineral Board be subsequently modified, cancelled or abrogated due to the existence of conflicting leases, operating agreements, private claims or other future obligations or conditions which may affect all or any portion of the leased Tract, it shall not relieve the Lessee of the obligation to pay any bonus due thereon to the Louisiana State Mineral Board, nor shall the Louisiana State Mineral Board be obligated to refund any consideration paid by the Lessor prior to such modification, cancellation, or abrogation, including, but not limited to, bonuses, rentals and royalties.

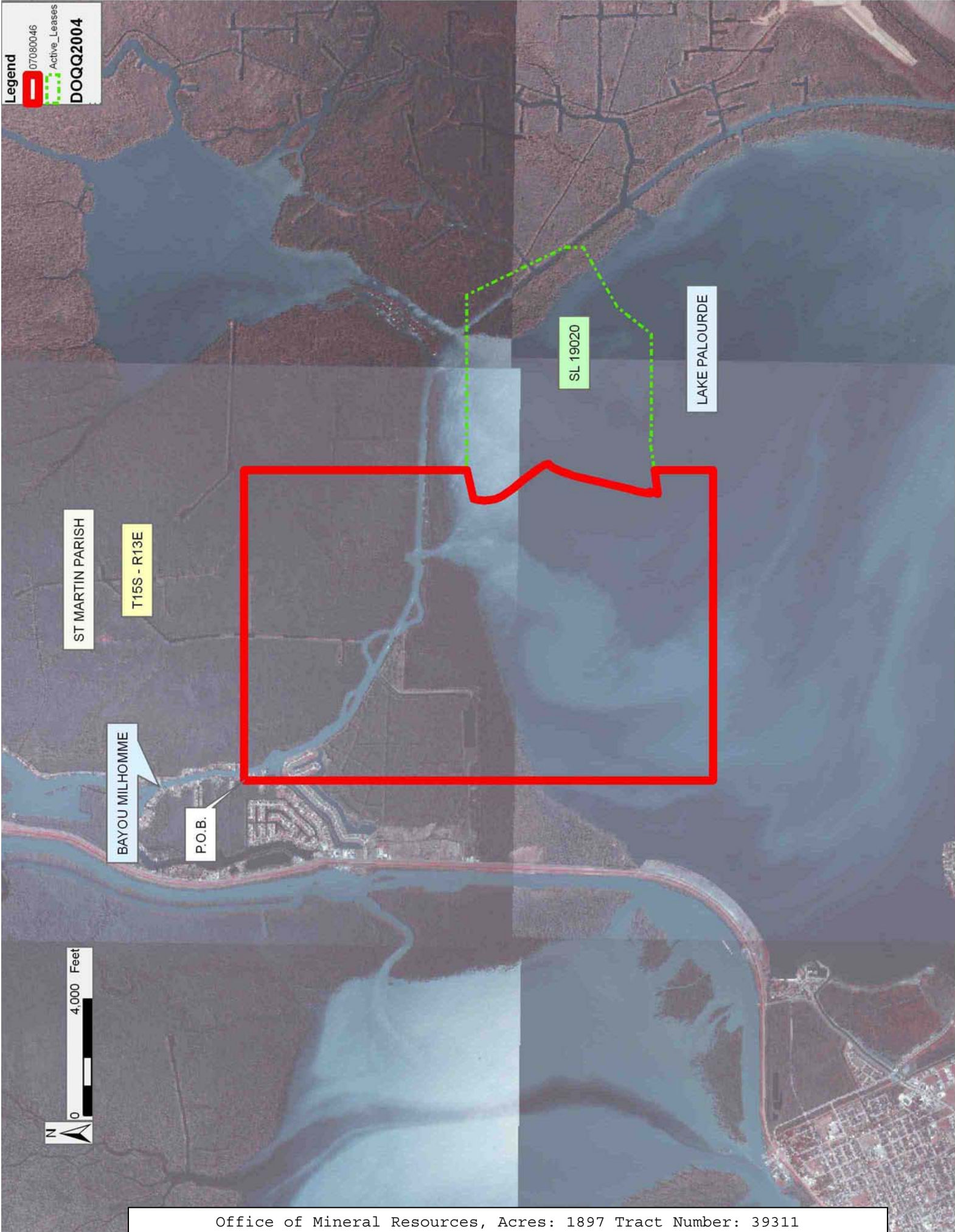
NOTE: The State of Louisiana does hereby reserve, and this lease shall be subject to, the imprescriptible right of surface use in the nature of a servitude in favor of the Department of Natural Resources, including its Offices and Commissions, for the sole purpose of implementing, constructing, servicing and maintaining approved coastal zone management and/or restoration projects. Utilization of any and all rights derived under this lease by the mineral lessee, its agents, successors or assigns, shall not interfere with nor hinder the reasonable surface use by the Department of Natural Resources, its Offices or Commissions, as herein above reserved.

Bidder	Cash Payment	Price/Acre	Rental	Oil	Gas	Other

Applicant: THEOPHILUS OIL, GAS & LAND SERVICES, LLC

Legend

- 070800.46
- Active_Leases
- DOQQ2004



ST MARTIN PARISH

T15S - R13E

BAYOU MILHOMME

P.O.B.

SL 19020

LAKE PALOURDE



TRACT 39312 - St. Martin and St. Mary Parishes, Louisiana

All of the lands now or formerly constituting the beds and bottoms of all water bodies of every nature and description as to which title is vested in the State of Louisiana, together with all islands arising therein and other lands formed by accretion or by reliction, where allowed by law, excepting tax adjudicated lands, and not presently under mineral lease on August 8, 2007, situated in St. Martin and St. Mary Parishes, Louisiana, and more particularly described as follows: Beginning at a point having Coordinates of X = 2,013,628.00 and Y = 402,054.00; thence East 14,109.91 feet to a point having Coordinates of X = 2,027,737.91 and Y = 402,054.00; thence South 7,415.00 feet to a point having Coordinates of X = 2,027,737.91 and Y = 394,639.00; thence West 14,109.91 feet to a point having Coordinates of X = 2,013,628.00 and Y = 394,639.00; thence North 7,415.00 feet to the point of beginning, containing approximately **2,284 acres**, all as more particularly outlined on a plat on file in the Office of Mineral Resources, Department of Natural Resources. All bearings, distances and coordinates are based on Louisiana Coordinate System of 1927, (North or South Zone), where applicable.

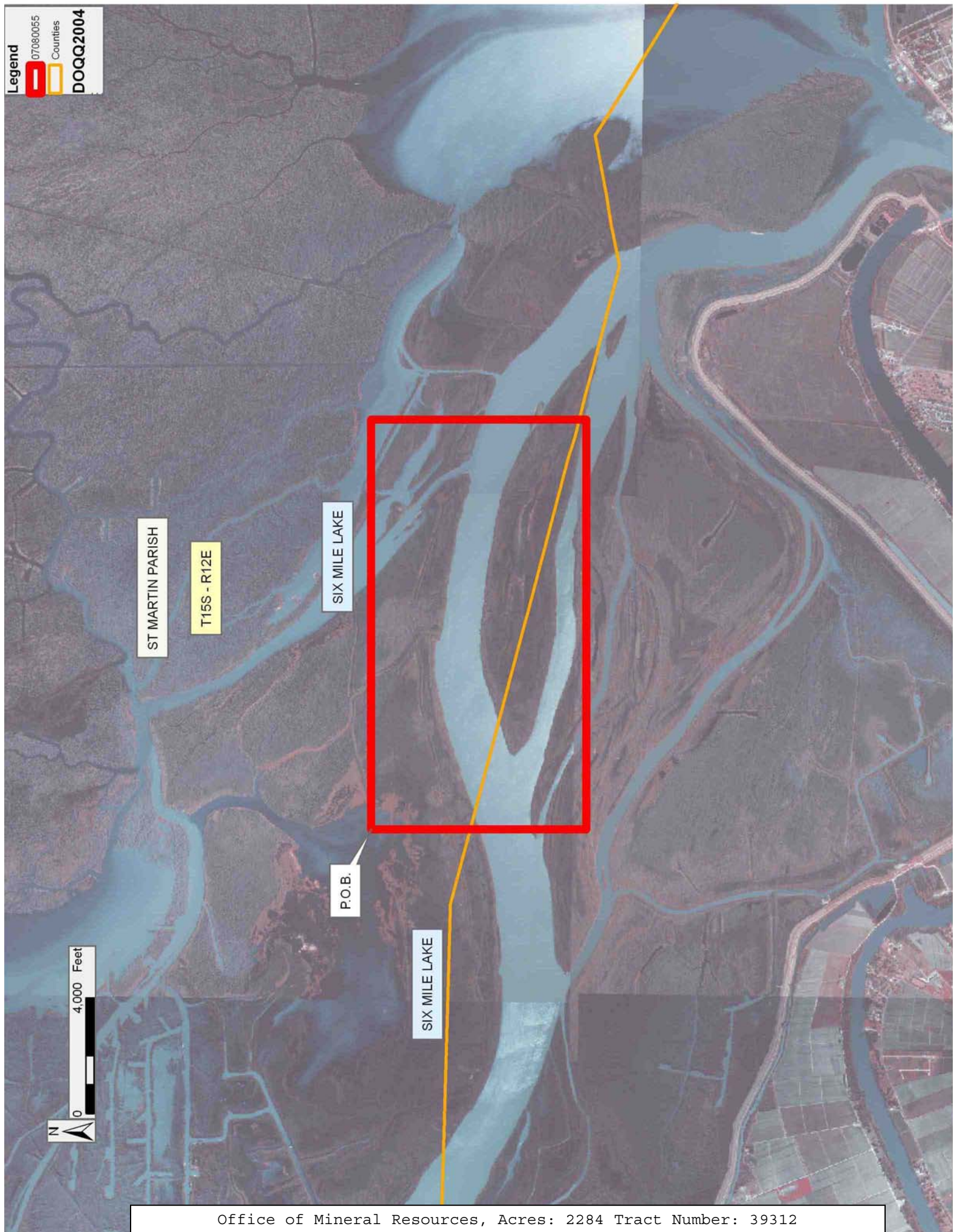
NOTE: The above description of the Tract nominated for lease has been provided and corrected, where required, exclusively by the nomination party. Any mineral lease selected from this Tract and awarded by the Louisiana State Mineral Board shall be without warranty of any kind, either express, implied, or statutory, including, but not limited to, the implied warranties of merchantability and fitness for a particular purpose. Should the mineral lease awarded by the Louisiana State Mineral Board be subsequently modified, cancelled or abrogated due to the existence of conflicting leases, operating agreements, private claims or other future obligations or conditions which may affect all or any portion of the leased Tract, it shall not relieve the Lessee of the obligation to pay any bonus due thereon to the Louisiana State Mineral Board, nor shall the Louisiana State Mineral Board be obligated to refund any consideration paid by the Lessor prior to such modification, cancellation, or abrogation, including, but not limited to, bonuses, rentals and royalties.

NOTE: The State of Louisiana does hereby reserve, and this lease shall be subject to, the imprescriptible right of surface use in the nature of a servitude in favor of the Department of Natural Resources, including its Offices and Commissions, for the sole purpose of implementing, constructing, servicing and maintaining approved coastal zone management and/or restoration projects. Utilization of any and all rights derived under this lease by the mineral lessee, its agents, successors or assigns, shall not interfere with nor hinder the reasonable surface use by the Department of Natural Resources, its Offices or Commissions, as herein above reserved.

Applicant: THEOPHILUS OIL, GAS & LAND SERVICES, LLC

Bidder	Cash Payment	Price/Acre	Rental	Oil	Gas	Other

Legend
07080065
Counties
DOQQ2004



TRACT 39313 - St. Martin and St. Mary Parishes, Louisiana

All of the lands now or formerly constituting the beds and bottoms of all water bodies of every nature and description as to which title is vested in the State of Louisiana, together with all islands arising therein and other lands formed by accretion or by reliction, where allowed by law, excepting tax adjudicated lands, and not presently under mineral lease on August 8, 2007, situated in St. Martin and St. Mary Parishes, Louisiana, and more particularly described as follows: Beginning at a point having Coordinates of X = 2,027,737.91 and Y = 402,054.00; thence East 10,706.09 feet to a point having Coordinates of X = 2,038,444.00 and Y = 402,054.00; thence South 12,824.17 feet to the Northeast corner of State Lease No. 18540 having Coordinates of X = 2,038,444.00 and Y = 389,229.83; thence West 10,706.09 feet along the North boundary of said State Lease No. 18540 to its Northwest corner having Coordinates of X = 2,027,737.91 and Y = 389,229.83; thence North 12,824.17 feet to the point of beginning, containing approximately **2,050 acres**, all as more particularly outlined on a plat on file in the Office of Mineral Resources, Department of Natural Resources. All bearings, distances and coordinates are based on Louisiana Coordinate System of 1927, (North or South Zone), where applicable.

NOTE: The above description of the Tract nominated for lease has been provided and corrected, where required, exclusively by the nomination party. Any mineral lease selected from this Tract and awarded by the Louisiana State Mineral Board shall be without warranty of any kind, either express, implied, or statutory, including, but not limited to, the implied warranties of merchantability and fitness for a particular purpose. Should the mineral lease awarded by the Louisiana State Mineral Board be subsequently modified, cancelled or abrogated due to the existence of conflicting leases, operating agreements, private claims or other future obligations or conditions which may affect all or any portion of the leased Tract, it shall not relieve the Lessee of the obligation to pay any bonus due thereon to the Louisiana State Mineral Board, nor shall the Louisiana State Mineral Board be obligated to refund any consideration paid by the Lessor prior to such modification, cancellation, or abrogation, including, but not limited to, bonuses, rentals and royalties.

NOTE: The State of Louisiana does hereby reserve, and this lease shall be subject to, the imprescriptible right of surface use in the nature of a servitude in favor of the Department of Natural Resources, including its Offices and Commissions, for the sole purpose of implementing, constructing, servicing and maintaining approved coastal zone management and/or restoration projects. Utilization of any and all rights derived under this lease by the mineral lessee, its agents, successors or assigns, shall not interfere with nor hinder the reasonable surface use by the Department of Natural Resources, its Offices or Commissions, as herein above reserved.

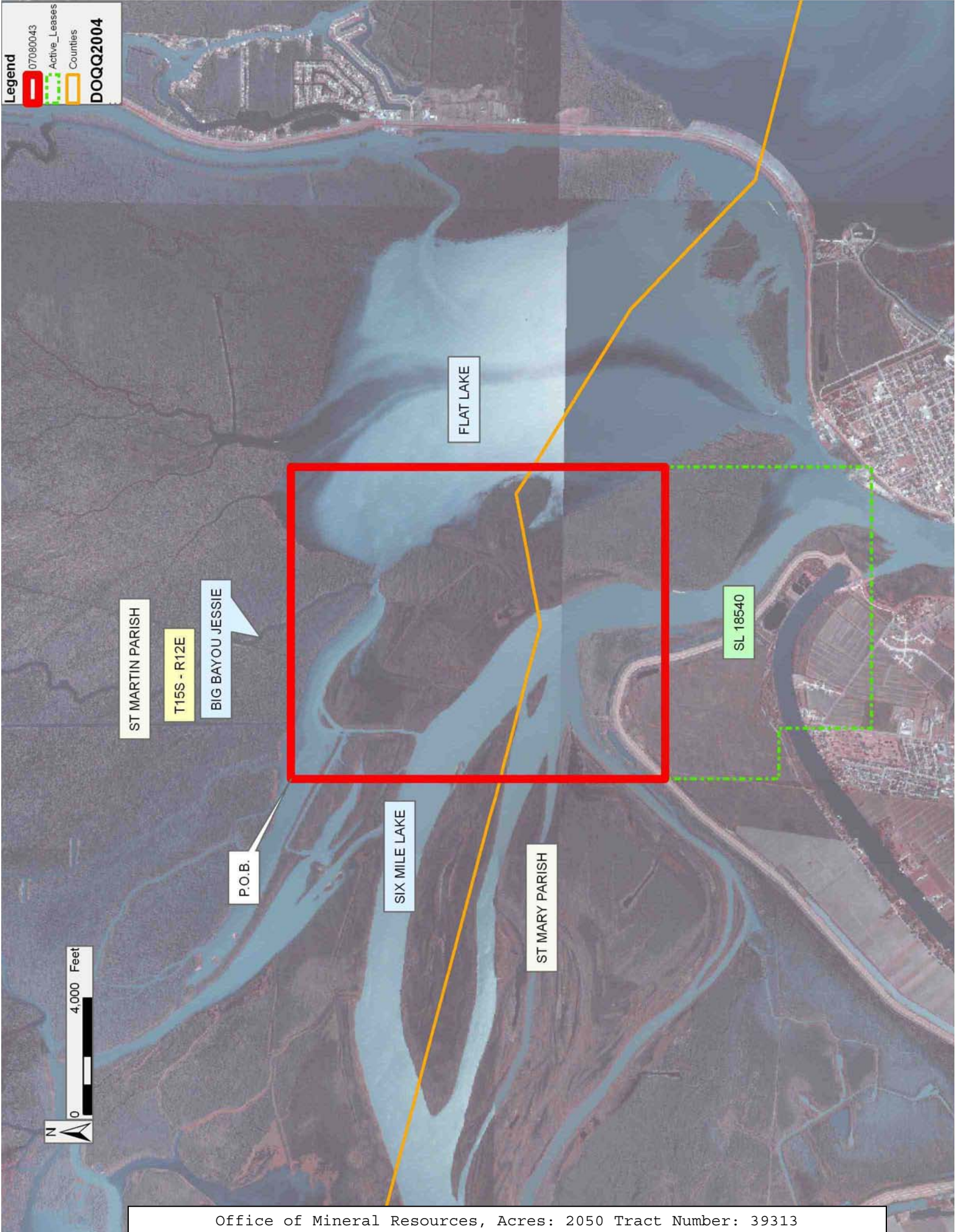
Applicant: THEOPHILUS OIL, GAS & LAND SERVICES, LLC

Bidder	Cash Payment	Price/Acre	Rental	Oil	Gas	Other

Legend

-  070800.43
-  Active_Leases
-  Counties

DOQQ2004



TRACT 39314 - St. Mary Parish, Louisiana

All of the lands now or formerly constituting the beds and bottoms of all water bodies of every nature and description as to which title is vested in the State of Louisiana, together with all islands arising therein and other lands formed by accretion or by reliction, where allowed by law, excepting tax adjudicated lands, and not presently under mineral lease on August 8, 2007, situated in St. Mary Parish, Louisiana, and more particularly described as follows: Beginning at a point having Coordinates of X = 2,013,628.00 and Y = 394,639.00; thence East 14,109.91 feet to a point having Coordinates of X = 2,027,737.91 and Y = 394,639.00; thence South 5,409.17 feet to the Northwest corner of State Lease No. 18540, having Coordinates of X = 2,027,737.91 and Y = 389,229.83; thence South 3,901.28 feet along the West boundary of said State Lease No. 18540 to its Southwest corner, the Northwest corner of State Lease No. 17988 and the Northeast corner of State Lease No. 17989 having Coordinates of X = 2,027,737.91 and Y = 385,328.55; thence West 4,895.55 feet along the North boundary of said State Lease No. 17989 to its Northwest corner having Coordinates of X = 2,022,842.36 and Y = 385,328.55; thence West 9,214.36 feet to a point having Coordinates of X = 2,013,628.00 and Y = 385,328.55; thence North 9,310.45 feet to the point of beginning, containing approximately **1,360 acres**, all as more particularly outlined on a plat on file in the Office of Mineral Resources, Department of Natural Resources. All bearings, distances and coordinates are based on Louisiana Coordinate System of 1927, (North or South Zone), where applicable.

NOTE: The above description of the Tract nominated for lease has been provided and corrected, where required, exclusively by the nomination party. Any mineral lease selected from this Tract and awarded by the Louisiana State Mineral Board shall be without warranty of any kind, either express, implied, or statutory, including, but not limited to, the implied warranties of merchantability and fitness for a particular purpose. Should the mineral lease awarded by the Louisiana State Mineral Board be subsequently modified, cancelled or abrogated due to the existence of conflicting leases, operating agreements, private claims or other future obligations or conditions which may affect all or any portion of the leased Tract, it shall not relieve the Lessee of the obligation to pay any bonus due thereon to the Louisiana State Mineral Board, nor shall the Louisiana State Mineral Board be obligated to refund any consideration paid by the Lessor prior to such modification, cancellation, or abrogation, including, but not limited to, bonuses, rentals and royalties.

NOTE: The State of Louisiana does hereby reserve, and this lease shall be subject to, the imprescriptible right of surface use in the nature of a servitude in favor of the Department of Natural Resources, including its Offices and Commissions, for the sole purpose of implementing, constructing, servicing and maintaining approved coastal zone management and/or restoration projects. Utilization of any and all rights derived under this lease by the mineral lessee, its agents, successors or assigns, shall not interfere with nor hinder the reasonable surface use by the

Department of Natural Resources, its Offices or Commissions, as herein above reserved.

Applicant: THEOPHILUS OIL, GAS & LAND SERVICES, LLC

Bidder	Cash Payment	Price/Acre	Rental	Oil	Gas	Other

Legend

07080052
Active_Leases

DOQQ2004

ST MARTIN PARISH

SIX MILE LAKE

P.O.B.

T15S - R12E

SL 18540

SL 17989

SL 17988

ST MARY PARISH



TRACT 39315 - St. Martin and St. Mary Parishes, Louisiana

All of the lands now or formerly constituting the beds and bottoms of all water bodies of every nature and description as to which title is vested in the State of Louisiana, together with all islands arising therein and other lands formed by accretion or by reliction, where allowed by law, excepting tax adjudicated lands, and not presently under mineral lease on August 8, 2007, situated in St. Martin and St. Mary Parishes, Louisiana, and more particularly described as follows: Beginning at a point having Coordinates of X = 2,038,444.00 and Y = 391,979.83; thence East 14,559.00 feet to a point having Coordinates of X = 2,053,003.00 and Y = 391,979.83; thence South 9,830.48 feet to a point having Coordinates of X = 2,053,003.00 and Y = 382,149.35; thence West 14,559.00 feet to the Southeast corner of State Lease No. 18540 having Coordinates of X = 2,038,444.00 and Y = 382,149.35; thence North 7,080.48 feet along the East boundary of said State Lease No. 18540 to its Northeast corner having Coordinates of X = 2,038,444.00 and Y = 389,229.83; thence North 2,750.00 feet to the point of beginning, containing approximately **2,209 acres**, all as more particularly outlined on a plat on file in the Office of Mineral Resources, Department of Natural Resources. All bearings, distances and coordinates are based on Louisiana Coordinate System of 1927, (North or South Zone), where applicable.

NOTE: The above description of the Tract nominated for lease has been provided and corrected, where required, exclusively by the nomination party. Any mineral lease selected from this Tract and awarded by the Louisiana State Mineral Board shall be without warranty of any kind, either express, implied, or statutory, including, but not limited to, the implied warranties of merchantability and fitness for a particular purpose. Should the mineral lease awarded by the Louisiana State Mineral Board be subsequently modified, cancelled or abrogated due to the existence of conflicting leases, operating agreements, private claims or other future obligations or conditions which may affect all or any portion of the leased Tract, it shall not relieve the Lessee of the obligation to pay any bonus due thereon to the Louisiana State Mineral Board, nor shall the Louisiana State Mineral Board be obligated to refund any consideration paid by the Lessor prior to such modification, cancellation, or abrogation, including, but not limited to, bonuses, rentals and royalties.

NOTE: The State of Louisiana does hereby reserve, and this lease shall be subject to, the imprescriptible right of surface use in the nature of a servitude in favor of the Department of Natural Resources, including its Offices and Commissions, for the sole purpose of implementing, constructing, servicing and maintaining approved coastal zone management and/or restoration projects. Utilization of any and all rights derived under this lease by the mineral lessee, its agents, successors or assigns, shall not interfere with nor hinder the reasonable surface use by the Department of Natural Resources, its Offices or Commissions, as herein above reserved.

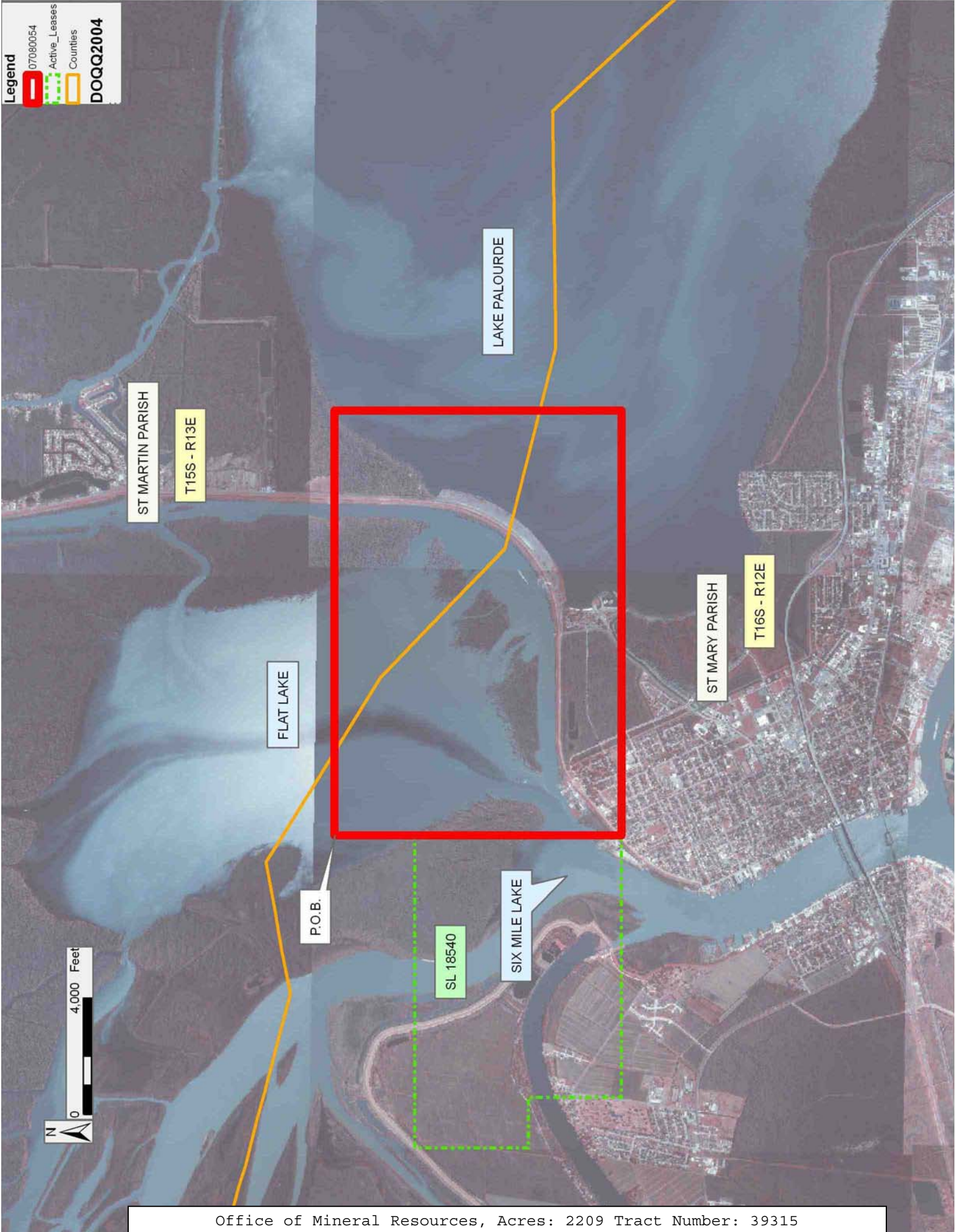
Applicant: THEOPHILUS OIL, GAS & LAND SERVICES, LLC

Bidder	Cash Payment	Price/Acre	Rental	Oil	Gas	Other

Legend

- 07080054
- Active_Leases
- Counties

DOQQ2004



TRACT 39316 - Lafourche and St. Charles Parishes, Louisiana

All of the lands now or formerly constituting the beds and bottoms of all water bodies of every nature and description as to which title is vested in the State of Louisiana, together with all islands arising therein and other lands formed by accretion or by reliction, where allowed by law, excepting tax adjudicated lands, and not presently under mineral lease on August 8, 2007, situated in Lafourche and St. Charles Parishes, Louisiana, and more particularly described as follows: Beginning at a point having Coordinates of X = 2,323,385.00 and Y = 385,108.00; thence East 7,375.00 feet to a point having Coordinates of X = 2,330,760.00 and Y = 385,108.00; thence South 14,750.00 feet to a point having Coordinates of X = 2,330,760.00 and Y = 370,358.00; thence West 7,375.00 feet to a point having Coordinates of X = 2,323,385.00 and Y = 370,358.00; thence North 14,750.00 feet to the point of beginning, containing approximately **2,497.27 acres**, all as more particularly outlined on a plat on file in the Office of Mineral Resources, Department of Natural Resources. All bearings, distances and coordinates are based on Louisiana Coordinate System of 1927, (North or South Zone), where applicable.

NOTE: The above description of the Tract nominated for lease has been provided and corrected, where required, exclusively by the nomination party. Any mineral lease selected from this Tract and awarded by the Louisiana State Mineral Board shall be without warranty of any kind, either express, implied, or statutory, including, but not limited to, the implied warranties of merchantability and fitness for a particular purpose. Should the mineral lease awarded by the Louisiana State Mineral Board be subsequently modified, cancelled or abrogated due to the existence of conflicting leases, operating agreements, private claims or other future obligations or conditions which may affect all or any portion of the leased Tract, it shall not relieve the Lessee of the obligation to pay any bonus due thereon to the Louisiana State Mineral Board, nor shall the Louisiana State Mineral Board be obligated to refund any consideration paid by the Lessor prior to such modification, cancellation, or abrogation, including, but not limited to, bonuses, rentals and royalties.

NOTE: The State of Louisiana does hereby reserve, and this lease shall be subject to, the imprescriptible right of surface use in the nature of a servitude in favor of the Department of Natural Resources, including its Offices and Commissions, for the sole purpose of implementing, constructing, servicing and maintaining approved coastal zone management and/or restoration projects. Utilization of any and all rights derived under this lease by the mineral lessee, its agents, successors or assigns, shall not interfere with nor hinder the reasonable surface use by the Department of Natural Resources, its Offices or Commissions, as herein above reserved.

Applicant: SAXON ENERGY, INC.

Bidder	Cash Payment	Price/Acre	Rental	Oil	Gas	Other



ST CHARLES PARISH

P.O.B.

T15S - R21E

LAKE SALVADOR

LAFOURCHE PARISH

T16S - R21E

