

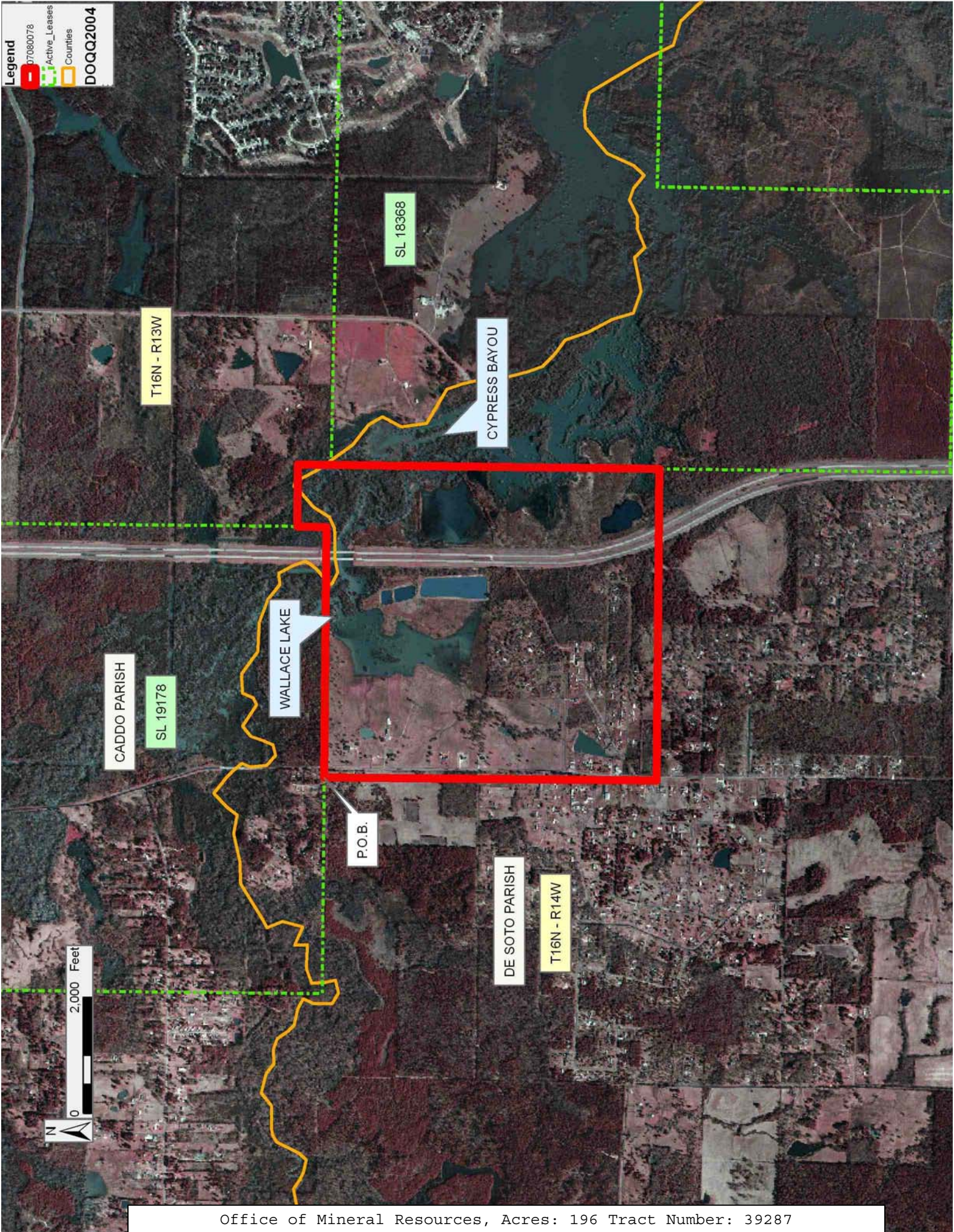
TRACT 39287 - Caddo and De Soto Parishes, Louisiana

All of the lands now or formerly constituting the beds and bottoms of all water bodies of every nature and description as to which title is vested in the State of Louisiana, together with all islands arising therein and other lands formed by accretion or by reliction, where allowed by law, excepting tax adjudicated lands, and not presently under mineral lease on August 8, 2007, situated in Caddo and De Soto Parishes, Louisiana, and more particularly described as follows: Beginning at a point having Coordinates of X = 1,609,650.00 and Y = 611,000.00; thence East 4,300.00 feet to a point having Coordinates of X = 1,613,950.00 and Y = 611,000.00; thence North 500.00 feet to a point having Coordinates of X = 1,613,950.00 and Y = 611,500.00; thence East 1,064.68 feet to a point having Coordinates of X = 1,615,014.68 and Y = 611,500.00; thence South 574.55 feet to the Northwest corner of State Lease No. 18368, having Coordinates of X = 1,615,014.68 and Y = 610,925.45; thence South 00 degrees 07 minutes 56 seconds West 5,625.47 feet along the West boundary of said State Lease No. 18368 to a point having Coordinates of X = 1,615,001.70 and Y = 605,300.00; thence West 5,351.70 feet to a point having Coordinates of X = 1,609,650.00 and Y = 605,300.00; thence North 5,700.00 feet to the point of beginning, containing approximately **196 acres**, all as more particularly outlined on a plat on file in the Office of Mineral Resources, Department of Natural Resources. All bearings, distances and coordinates are based on Louisiana Coordinate System of 1927, (North or South Zone), where applicable.

NOTE: The above description of the Tract nominated for lease has been provided and corrected, where required, exclusively by the nomination party. Any mineral lease selected from this Tract and awarded by the Louisiana State Mineral Board shall be without warranty of any kind, either express, implied, or statutory, including, but not limited to, the implied warranties of merchantability and fitness for a particular purpose. Should the mineral lease awarded by the Louisiana State Mineral Board be subsequently modified, cancelled or abrogated due to the existence of conflicting leases, operating agreements, private claims or other future obligations or conditions which may affect all or any portion of the leased Tract, it shall not relieve the Lessee of the obligation to pay any bonus due thereon to the Louisiana State Mineral Board, nor shall the Louisiana State Mineral Board be obligated to refund any consideration paid by the Lessor prior to such modification, cancellation, or abrogation, including, but not limited to, bonuses, rentals and royalties.

Applicant: THEOPHILUS OIL, GAS & LAND SERVICES, LLC

Bidder	Cash Payment	Price/ Acre	Rental	Oil	Gas	Other



TRACT 39288 - Red River Parish, Louisiana

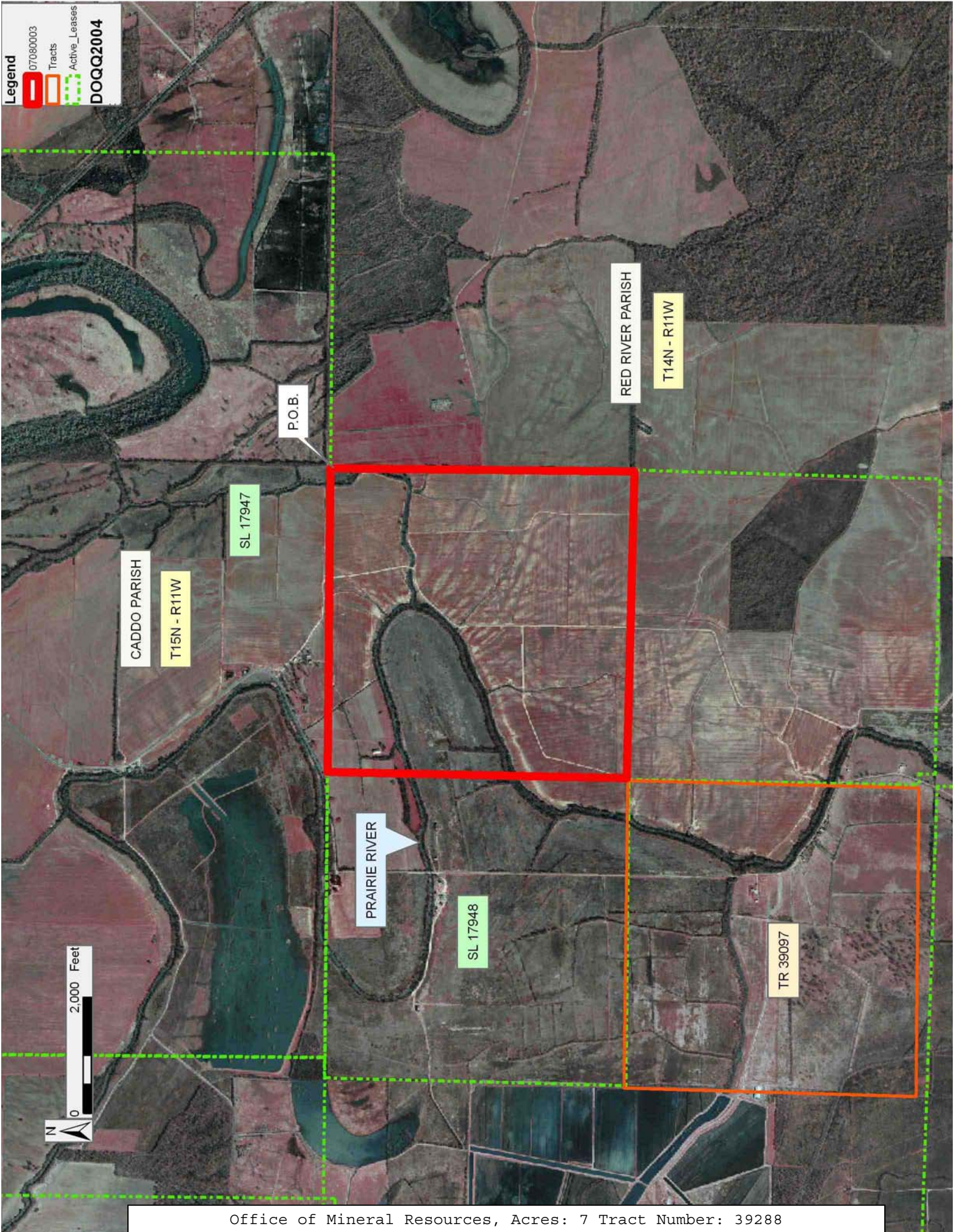
All of the lands now or formerly constituting the beds and bottoms of all water bodies of every nature and description as to which title is vested in the State of Louisiana, together with all islands arising therein and other lands formed by accretion or by reliction, where allowed by law, excepting tax adjudicated lands, and not presently under mineral lease on August 8, 2007, situated in Red River Parish, Louisiana, and more particularly described as follows: Beginning at a point on the South boundary of State Lease No. 17947 having Coordinates of X = 1,682,807.00 and Y = 572,800.00; thence South approximately 5,214 feet to a point on the boundary of State Lease No. 17948, as amended, having a Coordinate of X = 1,682,807.00; thence along the boundary of said State Lease No. 17948 the following courses: Westerly approximately 5,266 feet and Northerly approximately 5,134 feet to a point on the South boundary of said State Lease No. 17947 having a Coordinate of Y = 572,800.00; thence East approximately 5,205 feet to the point of beginning, containing approximately **7 acres**, all as more particularly outlined on a plat on file in the Office of Mineral Resources, Department of Natural Resources. All bearings, distances and coordinates are based on Louisiana Coordinate System of 1927, (North or South Zone), where applicable.

NOTE: The above description of the Tract nominated for lease has been provided and corrected, where required, exclusively by the nomination party. Any mineral lease selected from this Tract and awarded by the Louisiana State Mineral Board shall be without warranty of any kind, either express, implied, or statutory, including, but not limited to, the implied warranties of merchantability and fitness for a particular purpose. Should the mineral lease awarded by the Louisiana State Mineral Board be subsequently modified, cancelled or abrogated due to the existence of conflicting leases, operating agreements, private claims or other future obligations or conditions which may affect all or any portion of the leased Tract, it shall not relieve the Lessee of the obligation to pay any bonus due thereon to the Louisiana State Mineral Board, nor shall the Louisiana State Mineral Board be obligated to refund any consideration paid by the Lessor prior to such modification, cancellation, or abrogation, including, but not limited to, bonuses, rentals and royalties.

Bidder	Cash Payment	Price/ Acre	Rental	Oil	Gas	Other

Applicant: RIPPY OIL COMPANY

Legend
07080003
Tracts
Active_Leases
DOQQ2004



TRACT 39289 - Concordia Parish, Louisiana

All of the lands now or formerly constituting the beds and bottoms of all water bodies of every nature and description as to which title is vested in the State of Louisiana, together with all islands arising therein and other lands formed by accretion or by reliction, where allowed by law, excepting tax adjudicated lands, and not presently under mineral lease on August 8, 2007, situated in Concordia Parish, Louisiana, and more particularly described as follows: Beginning at a point having Coordinates of X = 2,281,888.58 and Y = 139,185.74; thence South 50 degrees 00 minutes 00 seconds East 16,000.00 feet to a point having Coordinates of X = 2,294,145.29 and Y = 128,901.14; thence South 39 degrees 00 minutes 07 seconds West 8,453.30 feet to a point having Coordinates of X = 2,288,825.23 and Y = 122,331.87; thence North 47 degrees 00 minutes 00 seconds West 15,500.00 feet to a point having Coordinates of X = 2,277,489.25 and Y = 132,902.84; thence North 35 degrees 00 minutes 00 seconds East 7,670.00 feet to the Point of beginning, (This nomination includes only waterbottoms claimed and owned by the state and specifically excludes any Wildlife Management Areas or land which the state may claim or own and to which the mineral rights are vested in the state), containing approximately **280 acres**, all as more particularly outlined on a plat on file in the Office of Mineral Resources, Department of Natural Resources. All bearings, distances and coordinates are based on Louisiana Coordinate System of 1927, (North or South Zone), where applicable.

NOTE: The above description of the Tract nominated for lease has been provided and corrected, where required, exclusively by the nomination party. Any mineral lease selected from this Tract and awarded by the Louisiana State Mineral Board shall be without warranty of any kind, either express, implied, or statutory, including, but not limited to, the implied warranties of merchantability and fitness for a particular purpose. Should the mineral lease awarded by the Louisiana State Mineral Board be subsequently modified, cancelled or abrogated due to the existence of conflicting leases, operating agreements, private claims or other future obligations or conditions which may affect all or any portion of the leased Tract, it shall not relieve the Lessee of the obligation to pay any bonus due thereon to the Louisiana State Mineral Board, nor shall the Louisiana State Mineral Board be obligated to refund any consideration paid by the Lessor prior to such modification, cancellation, or abrogation, including, but not limited to, bonuses, rentals and royalties.

Applicant: THEOPHILUS OIL, GAS & LAND SERVICES, LLC

Bidder	Cash Payment	Price/ Acre	Rental	Oil	Gas	Other

Legend

07080042

Wildlife

Counties

DOQQ2004

MISSISSIPPI RIVER

CONCORDIA PARISH

THREE RIVERS WMA

P.O.B.

T1N - R8E

T1S - R5W

WEST FELICIANA PARISH

MISSISSIPPI RIVER

0 4,000 Feet

N

Office of Mineral Resources, Acres: 280 Tract Number: 39289

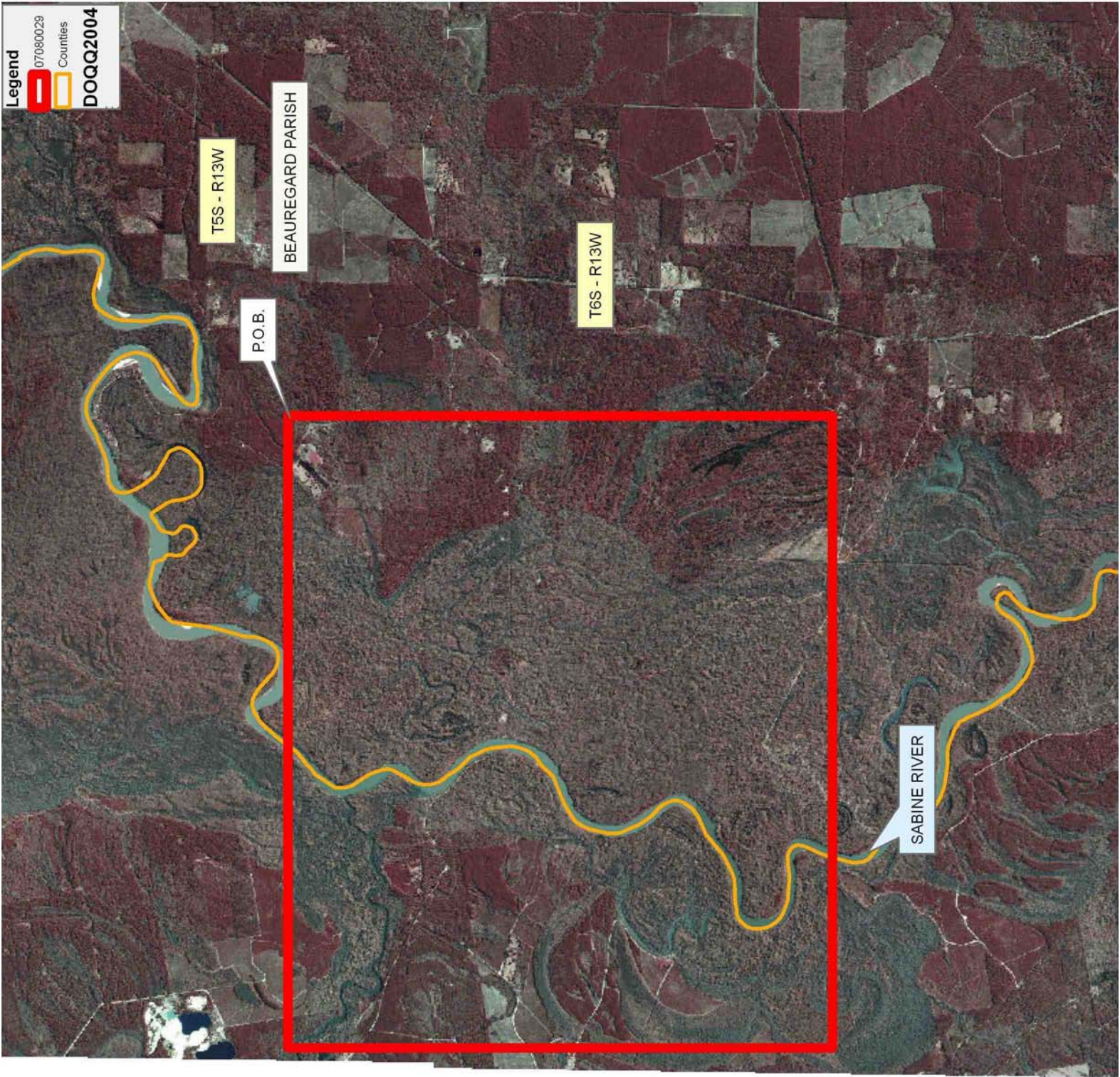
TRACT 39290 - Beauregard Parish, Louisiana

All of the lands now or formerly constituting the beds and bottoms of all water bodies of every nature and description as to which title is vested in the State of Louisiana, together with all islands arising therein and other lands formed by accretion or by reliction, where allowed by law, excepting tax adjudicated lands, and not presently under mineral lease on August 8, 2007, situated in Beauregard Parish, Louisiana, and more particularly described as follows: Beginning at a point having Coordinates of X = 1,257,333.00 and Y = 702,699.00; thence South 15,920.00 feet to a point having Coordinates of X = 1,257,333.00 and Y = 686,779.00; thence West 18,480.00 feet to a point having Coordinates of X = 1,238,853.00 and Y = 686,779.00; thence North 15,920.00 feet to a point having Coordinates of X = 1,238,853.00 and Y = 702,699.00; thence East 18,480.00 feet to the point of beginning, containing approximately **87 acres, LESS AND EXCEPT** that portion thereof, if any, located West of the boundary line between the States of Texas and Louisiana as determined by the report of the Special Master and adjudicated by the Supreme Court of the United States in litigation styled **Texas v. Louisiana, et al No. 36 Original**, or as otherwise approved by said court, all as more particularly outlined on a plat on file in the Office of Mineral Resources, Department of Natural Resources. All bearings, distances and coordinates are based on Louisiana Coordinate System of 1927, (North or South Zone), where applicable.

NOTE: The above description of the Tract nominated for lease has been provided and corrected, where required, exclusively by the nomination party. Any mineral lease selected from this Tract and awarded by the Louisiana State Mineral Board shall be without warranty of any kind, either express, implied, or statutory, including, but not limited to, the implied warranties of merchantability and fitness for a particular purpose. Should the mineral lease awarded by the Louisiana State Mineral Board be subsequently modified, cancelled or abrogated due to the existence of conflicting leases, operating agreements, private claims or other future obligations or conditions which may affect all or any portion of the leased Tract, it shall not relieve the Lessee of the obligation to pay any bonus due thereon to the Louisiana State Mineral Board, nor shall the Louisiana State Mineral Board be obligated to refund any consideration paid by the Lessor prior to such modification, cancellation, or abrogation, including, but not limited to, bonuses, rentals and royalties.

Applicant: BRADLEY BROUSSARD LAND SERVICES, INC.

Bidder	Cash Payment	Price/ Acre	Rental	Oil	Gas	Other



TRACT 39291 - Beauregard Parish, Louisiana

All of the lands now or formerly constituting the beds and bottoms of all water bodies of every nature and description as to which title is vested in the State of Louisiana, together with all islands arising therein and other lands formed by accretion or by reliction, where allowed by law, excepting tax adjudicated lands, and not presently under mineral lease on August 8, 2007, situated in Beauregard Parish, Louisiana, and more particularly described as follows: Beginning at a point having Coordinates of X = 1,257,333.00 and Y = 686,779.00; thence South 14,686.00 feet to a point having Coordinates of X = 1,257,333.00 and Y = 672,093.00; thence West 18,480.00 feet to a point having Coordinates of X = 1,238,853.00 and Y = 672,093.00; thence North 14,686.00 feet to a point having Coordinates of X = 1,238,853.00 and Y = 686,779.00; thence East 18,480.00 feet to the point of beginning, containing approximately **106 acres, LESS AND EXCEPT** that portion thereof, if any, located West of the boundary line between the States of Texas and Louisiana as determined by the report of the Special Master and adjudicated by the Supreme Court of the United States in litigation styled **Texas v. Louisiana, et al No. 36 Original**, or as otherwise approved by said court, all as more particularly outlined on a plat on file in the Office of Mineral Resources, Department of Natural Resources. All bearings, distances and coordinates are based on Louisiana Coordinate System of 1927, (North or South Zone), where applicable.

NOTE: The above description of the Tract nominated for lease has been provided and corrected, where required, exclusively by the nomination party. Any mineral lease selected from this Tract and awarded by the Louisiana State Mineral Board shall be without warranty of any kind, either express, implied, or statutory, including, but not limited to, the implied warranties of merchantability and fitness for a particular purpose. Should the mineral lease awarded by the Louisiana State Mineral Board be subsequently modified, cancelled or abrogated due to the existence of conflicting leases, operating agreements, private claims or other future obligations or conditions which may affect all or any portion of the leased Tract, it shall not relieve the Lessee of the obligation to pay any bonus due thereon to the Louisiana State Mineral Board, nor shall the Louisiana State Mineral Board be obligated to refund any consideration paid by the Lessor prior to such modification, cancellation, or abrogation, including, but not limited to, bonuses, rentals and royalties.

Applicant: BRADLEY BROUSSARD LAND SERVICES, INC.

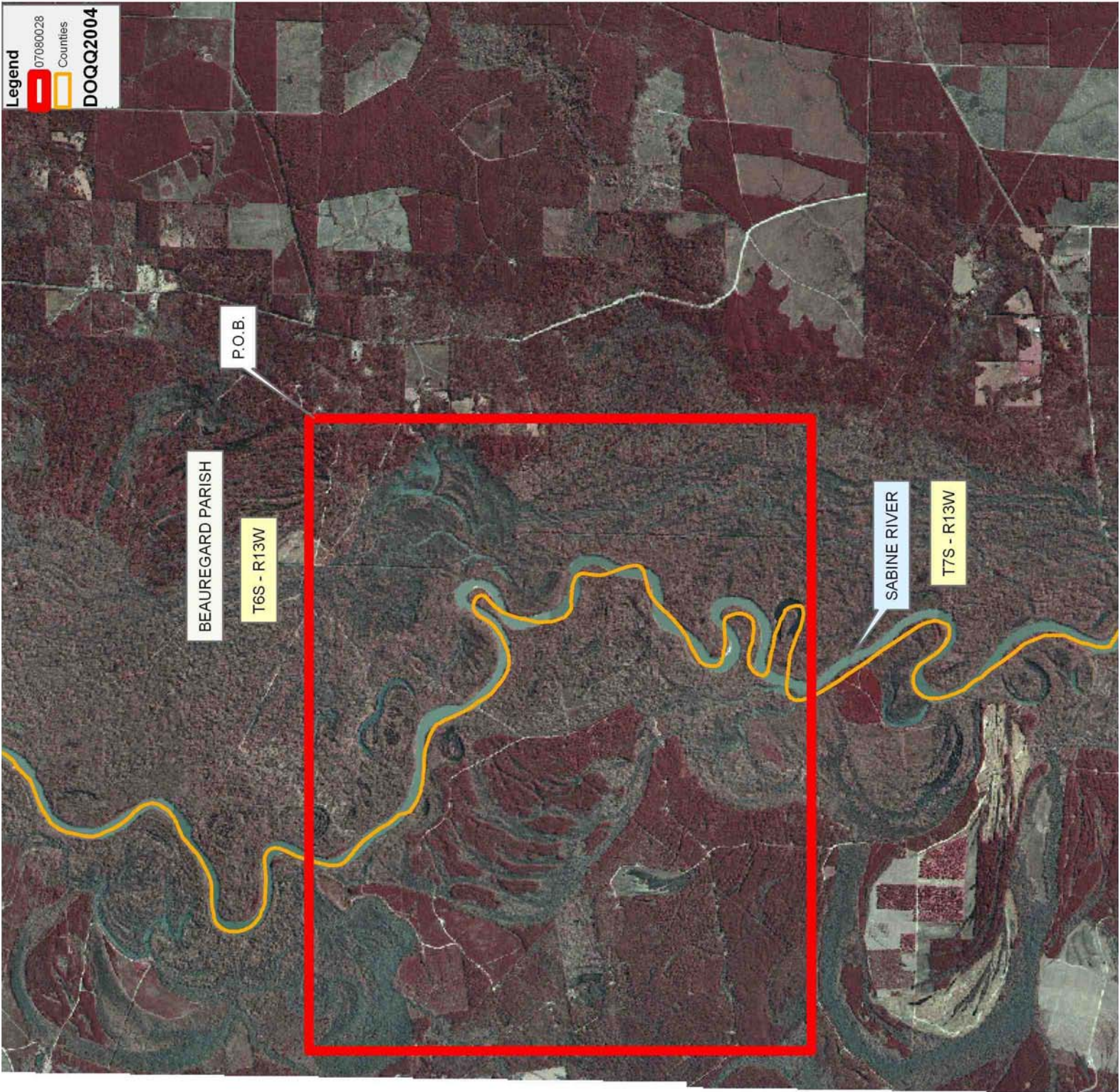
Bidder	Cash Payment	Price/ Acre	Rental	Oil	Gas	Other

Legend

07080028

Countries

DOQQ2004



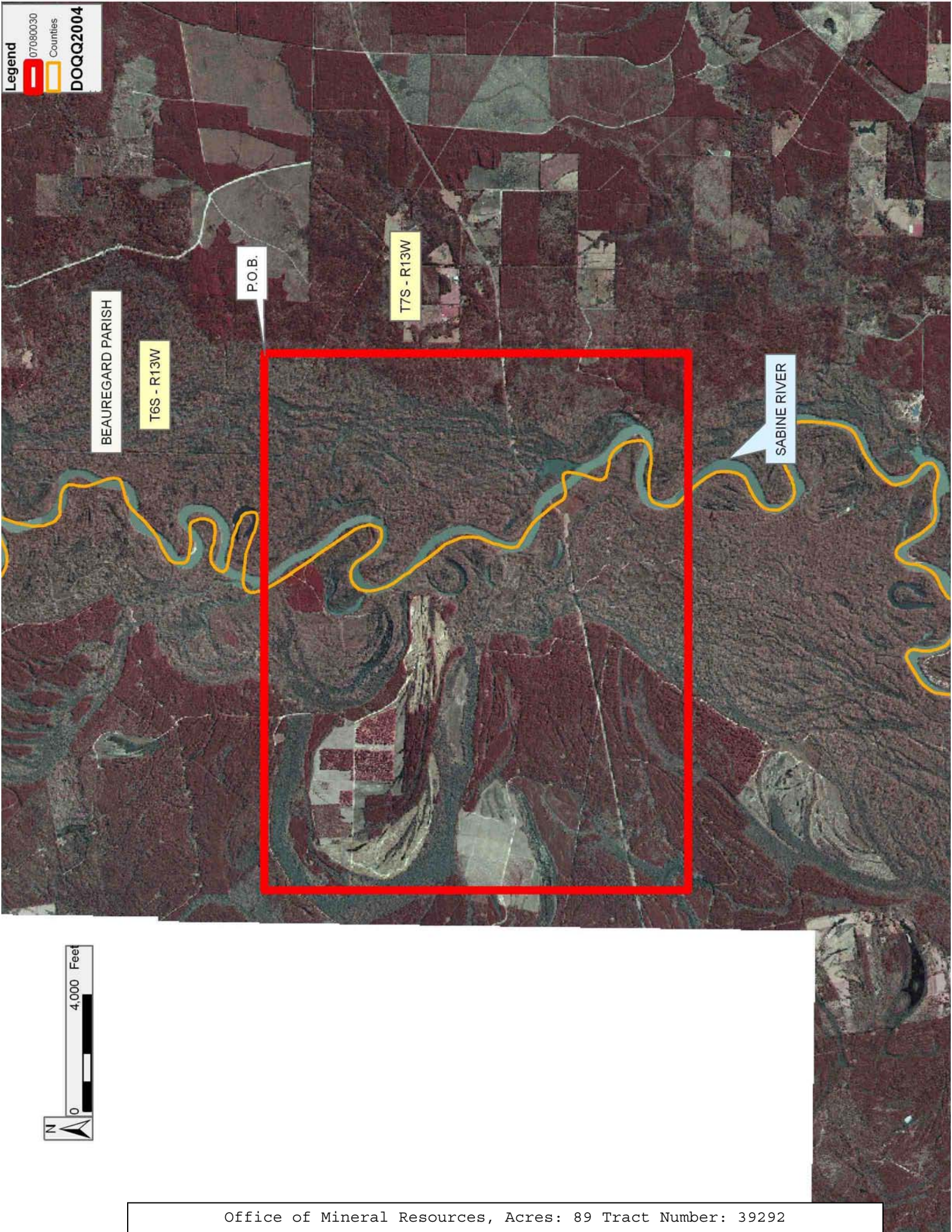
TRACT 39292 - Beauregard Parish, Louisiana

All of the lands now or formerly constituting the beds and bottoms of all water bodies of every nature and description as to which title is vested in the State of Louisiana, together with all islands arising therein and other lands formed by accretion or by reliction, where allowed by law, excepting tax adjudicated lands, and not presently under mineral lease on August 8, 2007, situated in Beauregard Parish, Louisiana, and more particularly described as follows: Beginning at a point having Coordinates of X = 1,257,333.00 and Y = 672,093.00; thence South 14,595.00 feet to a point having Coordinates of X = 1,257,333.00 and Y = 657,498.00; thence West 18,480.00 feet to a point having Coordinates of X = 1,238,853.00 and Y = 657,498.00; thence North 14,595.00 feet to a point having Coordinates of X = 1,238,853.00 and Y = 672,093.00; thence East 18,480.00 feet to the point of beginning, containing approximately **89 acres, LESS AND EXCEPT** that portion thereof, if any, located West of the boundary line between the States of Texas and Louisiana as determined by the report of the Special Master and adjudicated by the Supreme Court of the United States in litigation styled **Texas v. Louisiana, et al No. 36 Original**, or as otherwise approved by said court, all as more particularly outlined on a plat on file in the Office of Mineral Resources, Department of Natural Resources. All bearings, distances and coordinates are based on Louisiana Coordinate System of 1927, (North or South Zone), where applicable.

NOTE: The above description of the Tract nominated for lease has been provided and corrected, where required, exclusively by the nomination party. Any mineral lease selected from this Tract and awarded by the Louisiana State Mineral Board shall be without warranty of any kind, either express, implied, or statutory, including, but not limited to, the implied warranties of merchantability and fitness for a particular purpose. Should the mineral lease awarded by the Louisiana State Mineral Board be subsequently modified, cancelled or abrogated due to the existence of conflicting leases, operating agreements, private claims or other future obligations or conditions which may affect all or any portion of the leased Tract, it shall not relieve the Lessee of the obligation to pay any bonus due thereon to the Louisiana State Mineral Board, nor shall the Louisiana State Mineral Board be obligated to refund any consideration paid by the Lessor prior to such modification, cancellation, or abrogation, including, but not limited to, bonuses, rentals and royalties.

Applicant: BRADLEY BROUSSARD LAND SERVICES, INC.

Bidder	Cash Payment	Price/ Acre	Rental	Oil	Gas	Other



TRACT 39293 - Jefferson Davis Parish, Louisiana

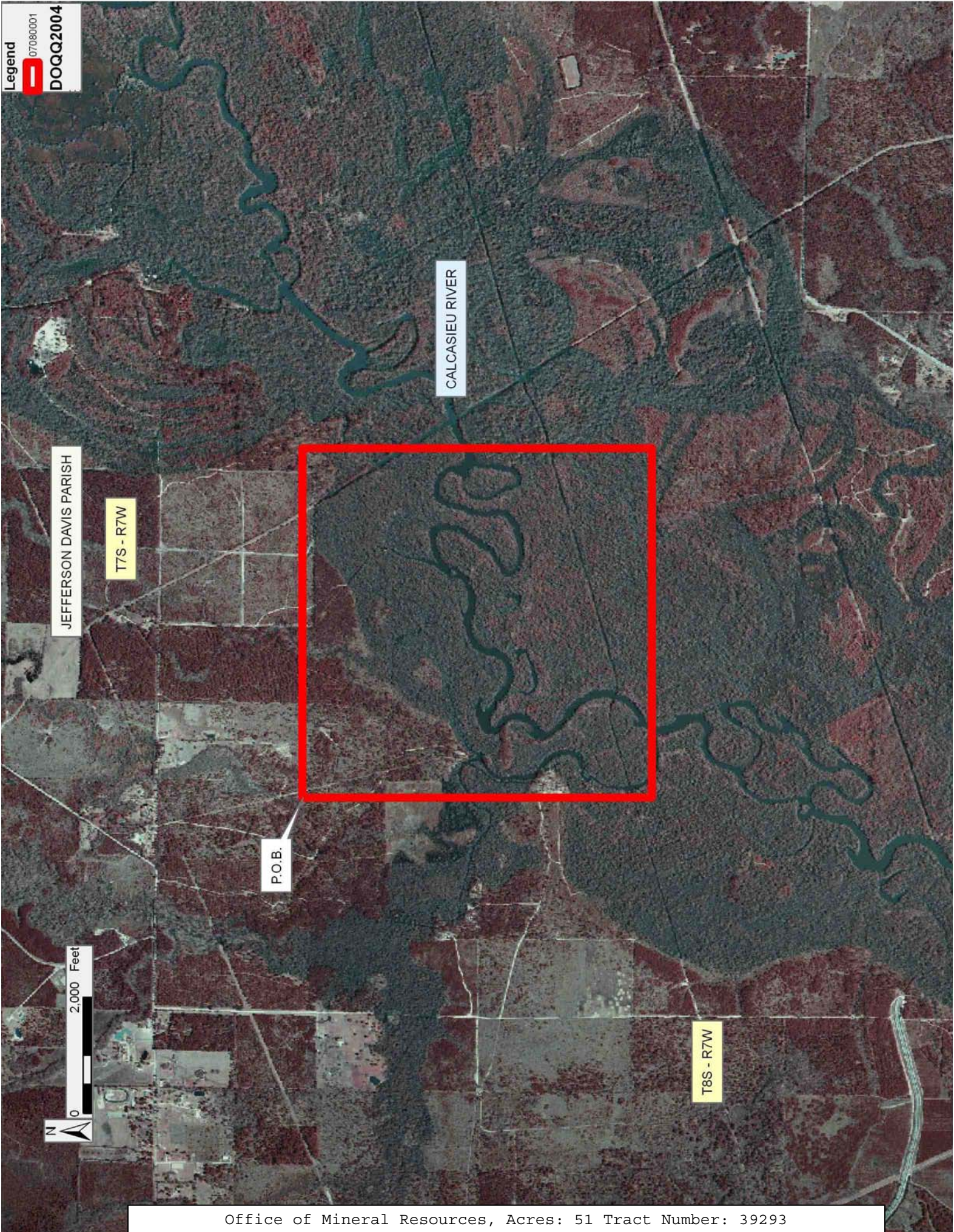
All of the lands now or formerly constituting the beds and bottoms of all water bodies of every nature and description as to which title is vested in the State of Louisiana, together with all islands arising therein and other lands formed by accretion or by reliction, where allowed by law, excepting tax adjudicated lands, and not presently under mineral lease on August 8, 2007, situated in Jefferson Davis Parish, Louisiana, and more particularly described as follows: Beginning at a point having Coordinates of X = 1,445,800.00 and Y = 635,500.00; thence East 6,000.00 feet to a point having Coordinates of X = 1,451,800.00 and Y = 635,500.00; thence South 6,000.00 feet to a point having Coordinates of X = 1,451,800.00 and Y = 629,500.00; thence West 6,000.00 feet to a point having Coordinates of X = 1,445,800.00 and Y = 629,500.00; thence North 6,000.00 feet to the point of beginning, (This nomination includes only waterbottoms claimed and owned by the state and specifically excludes any land which the state may claim or own and to which the mineral rights are vested in the state), containing approximately **51 acres**, all as more particularly outlined on a plat on file in the Office of Mineral Resources, Department of Natural Resources. All bearings, distances and coordinates are based on Louisiana Coordinate System of 1927, (North or South Zone), where applicable.

NOTE: The above description of the Tract nominated for lease has been provided and corrected, where required, exclusively by the nomination party. Any mineral lease selected from this Tract and awarded by the Louisiana State Mineral Board shall be without warranty of any kind, either express, implied, or statutory, including, but not limited to, the implied warranties of merchantability and fitness for a particular purpose. Should the mineral lease awarded by the Louisiana State Mineral Board be subsequently modified, cancelled or abrogated due to the existence of conflicting leases, operating agreements, private claims or other future obligations or conditions which may affect all or any portion of the leased Tract, it shall not relieve the Lessee of the obligation to pay any bonus due thereon to the Louisiana State Mineral Board, nor shall the Louisiana State Mineral Board be obligated to refund any consideration paid by the Lessor prior to such modification, cancellation, or abrogation, including, but not limited to, bonuses, rentals and royalties.

NOTE: The above Tract is located upon a restricted scenic river and all operations in this area must be conducted in strict conformity with the regulations of the Corps of Engineers, U.S. Army.

Applicant: TAYLEX, INC.

Bidder	Cash Payment	Price/ Acre	Rental	Oil	Gas	Other



TRACT 39294 - Ascension Parish, Louisiana

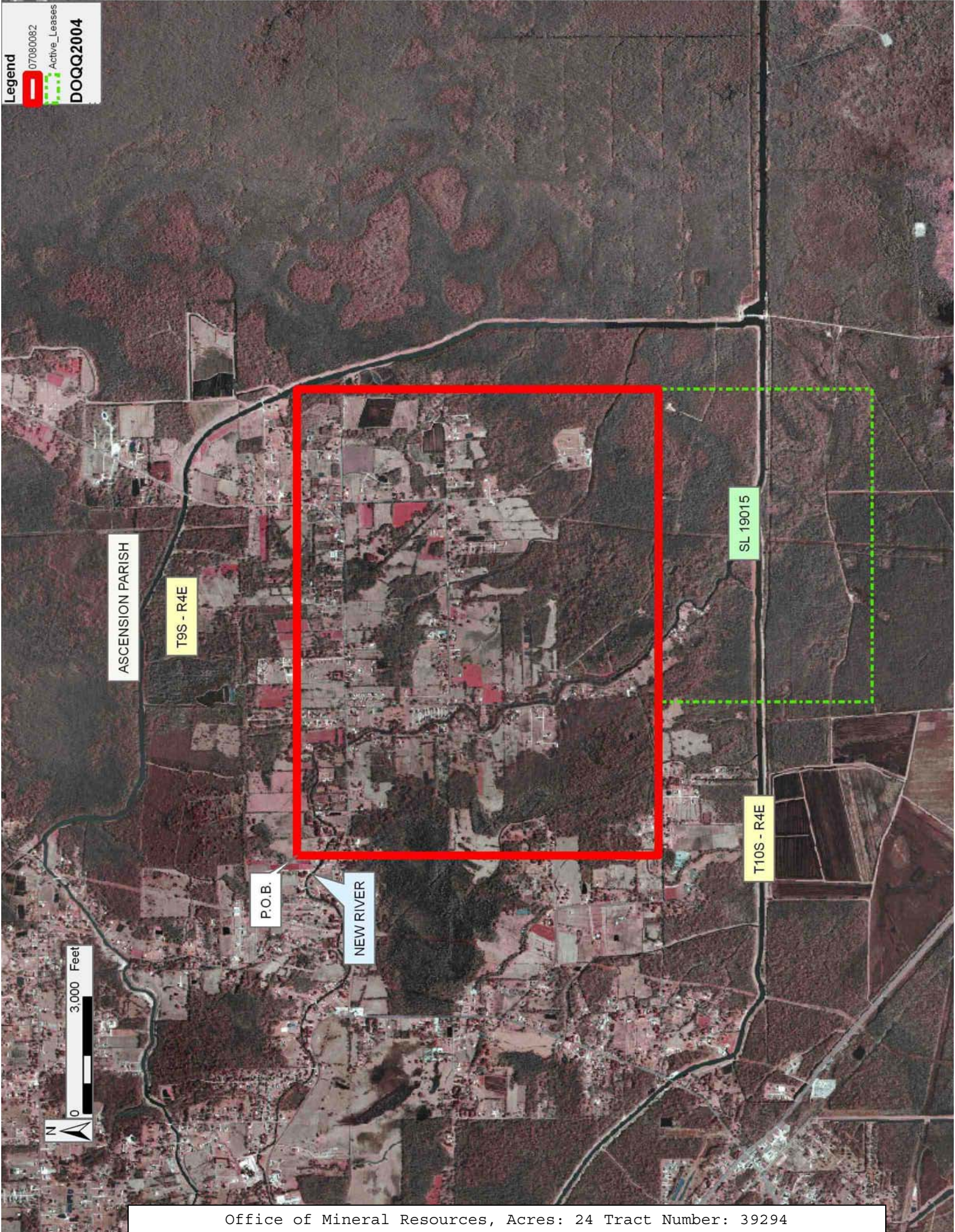
All of the lands now or formerly constituting the beds and bottoms of all water bodies of every nature and description as to which title is vested in the State of Louisiana, together with all islands arising therein and other lands formed by accretion or by reliction, where allowed by law, excepting tax adjudicated lands, and not presently under mineral lease on August 8, 2007, situated in Ascension Parish, Louisiana, and more particularly described as follows: Beginning at a point having Coordinates of X = 2,159,000.00 and Y = 566,000.00; thence East 12,000.00 feet to a point having Coordinates of X = 2,171,000.00 and Y = 566,000.00; thence South 9,300 feet to the Northeast Corner of State Lease No. 19015 to a point having Coordinates of X = 2,171,000.00 and Y = 556,700.00; thence West 8,050.00 feet along the Northern boundary of said State Lease No. 19015 to its Northwest corner having Coordinates of X = 2,162,950.00 and Y = 556,700.00; thence West 3,950.00 feet to a point having Coordinates of X = 2,159,000.00 and Y = 556,700.00; thence North 9,300.00 feet to the point of beginning, containing approximately **24.00 acres**, all as more particularly outlined on a plat on file in the Office of Mineral Resources, Department of Natural Resources. All bearings, distances and coordinates are based on Louisiana Coordinate System of 1927, (North or South Zone), where applicable.

NOTE: The above description of the Tract nominated for lease has been provided and corrected, where required, exclusively by the nomination party. Any mineral lease selected from this Tract and awarded by the Louisiana State Mineral Board shall be without warranty of any kind, either express, implied, or statutory, including, but not limited to, the implied warranties of merchantability and fitness for a particular purpose. Should the mineral lease awarded by the Louisiana State Mineral Board be subsequently modified, cancelled or abrogated due to the existence of conflicting leases, operating agreements, private claims or other future obligations or conditions which may affect all or any portion of the leased Tract, it shall not relieve the Lessee of the obligation to pay any bonus due thereon to the Louisiana State Mineral Board, nor shall the Louisiana State Mineral Board be obligated to refund any consideration paid by the Lessor prior to such modification, cancellation, or abrogation, including, but not limited to, bonuses, rentals and royalties.

NOTE: The State of Louisiana does hereby reserve, and this lease shall be subject to, the imprescriptible right of surface use in the nature of a servitude in favor of the Department of Natural Resources, including its Offices and Commissions, for the sole purpose of implementing, constructing, servicing and maintaining approved coastal zone management and/or restoration projects. Utilization of any and all rights derived under this lease by the mineral lessee, its agents, successors or assigns, shall not interfere with nor hinder the reasonable surface use by the Department of Natural Resources, its Offices or Commissions, as herein above reserved.

Applicant: JANUS GULF COAST EXPL., LLC

Bidder	Cash Payment	Price/ Acre	Rental	Oil	Gas	Other



TRACT 39295 - Portion of Block 33, Chandeleur Sound Addition Area, Revised, St. Bernard Parish, Louisiana

All of the lands now or formerly constituting the beds and bottoms of all water bodies of every nature and description as to which title is vested in the State of Louisiana, together with all islands arising therein and other lands formed by accretion or by reliction, where allowed by law, excepting tax adjudicated lands, and not presently under mineral lease on August 8, 2007, situated in St. Bernard Parish, Louisiana, and more particularly described as follows: Beginning at the Northwest corner of Block 33, Chandeleur Sound Area Addition, Revised, having Coordinates of X = 2,768,100.00 and Y = 514,080.00; thence East 7,566.50 feet along the North line of said Block 33 to a point on the Court Decree coastline, having Coordinates of X = 2,775,666.50 and Y = 514,080.00; thence along the said coastline the following courses: Southeasterly on a straight line to a point having Coordinates of X = 2,775,787.00 and Y = 513,796.00, Southeasterly on a straight line to a point having Coordinates of X = 2,777,512.00 and Y = 513,071.00, Southeasterly on a straight line to a point having Coordinates of X = 2,779,032.00 and Y = 512,013.00, Southeasterly on a straight line to a point having Coordinates of X = 2,780,766.00 and Y = 510,417.00, Southeasterly on a straight line to a point having Coordinates of X = 2,782,059.00 and Y = 508,914.00 and Southeasterly on a straight line to a point on the East line of said Block 33, having Coordinates of X = 2,782,850.00 and Y = 507,873.67; thence South 1,168.67 feet along the East line of said Block 33 to a point having Coordinates of X = 2,782,850.00 and Y = 506,705.00; thence West 14,750.00 feet to a point on the West line of said Block 33, having Coordinates of X = 2,768,100.00 and Y = 506,705.00; thence North 7,375.00 feet along the West line of said Block 33 to the point of beginning, containing approximately **1,985 acres**, all as more particularly outlined on a plat on file in the Office of Mineral Resources, Department of Natural Resources. All bearings, distances and coordinates are based on Louisiana Coordinate System of 1927, (North or South Zone), where applicable.

NOTE: The above description of the Tract nominated for lease has been provided and corrected, where required, exclusively by the nomination party. Any mineral lease selected from this Tract and awarded by the Louisiana State Mineral Board shall be without warranty of any kind, either express, implied, or statutory, including, but not limited to, the implied warranties of merchantability and fitness for a particular purpose. Should the mineral lease awarded by the Louisiana State Mineral Board be subsequently modified, cancelled or abrogated due to the existence of conflicting leases, operating agreements, private claims or other future obligations or conditions which may affect all or any portion of the leased Tract, it shall not relieve the Lessee of the obligation to pay any bonus due thereon to the Louisiana State Mineral Board, nor shall the Louisiana State Mineral Board be obligated to refund any consideration paid by the Lessor prior to such modification, cancellation, or abrogation, including, but not limited to, bonuses, rentals and royalties.

NOTE: The Office of Mineral Resources will require a minimum bonus of \$130 per acre and a minimum royalty of 21%.

NOTE: The State of Louisiana does hereby reserve, and this lease shall be subject to, the imprescriptible right of surface use in the nature of a servitude in favor of the Department of Natural Resources, including its Offices and Commissions, for the sole purpose of implementing, constructing, servicing and maintaining approved coastal zone management and/or restoration projects. Utilization of any and all rights derived under this lease by the mineral lessee, its agents, successors or assigns, shall not interfere with nor hinder the reasonable surface use by the Department of Natural Resources, its Offices or Commissions, as herein above reserved.

Applicant: THEOPHILUS OIL, GAS & LAND SERVICES, LLC

Bidder	Cash Payment	Price/ Acre	Rental	Oil	Gas	Other



ST BERNARD PARISH

CHANDELEUR SOUND

P.O.B.

CHANDELEUR SOUND AREA ADDITION, REVISED

TRACT 39296 - Portion of Block 34, Chandeleur Sound Addition Area, Revised, St. Bernard Parish, Louisiana

All of the lands now or formerly constituting the beds and bottoms of all water bodies of every nature and description as to which title is vested in the State of Louisiana, together with all islands arising therein and other lands formed by accretion or by reliction, where allowed by law, excepting tax adjudicated lands, and not presently under mineral lease on August 8, 2007, situated in St. Bernard Parish, Louisiana, and more particularly described as follows: Beginning at the Southwest corner of Block 34, Chandeleur Sound Area Addition, Revised, having Coordinates of X = 2,782,850.00 and Y = 499,394.40; thence North 8,479.27 feet along the West line of said Block 34 to a point on the Louisiana Coastline, as decreed by the Supreme Court of the United States, as determined by a Special Master appointed therein, in litigation styled *United States v. State of Louisiana et al No. 9 Original*, in 1975, having Coordinates of X = 2,782,850.00 and Y = 507,873.67; thence along the said coastline the following: Southeasterly on a straight line to a point having Coordinates of X = 2,784,689.00 and Y = 505,455.00 and Southeasterly on a straight line to a point on the South line of said Block 34, having Coordinates of X = 2,788,228.12 and Y = 499,394.40; thence West 5,378.12 feet along the South line of said Block 34 to the point of beginning, containing approximately **305 acres**, all as more particularly outlined on a plat on file in the Office of Mineral Resources, Department of Natural Resources. All bearings, distances and coordinates are based on Louisiana Coordinate System of 1927, (North or South Zone), where applicable.

NOTE: The above description of the Tract nominated for lease has been provided and corrected, where required, exclusively by the nomination party. Any mineral lease selected from this Tract and awarded by the Louisiana State Mineral Board shall be without warranty of any kind, either express, implied, or statutory, including, but not limited to, the implied warranties of merchantability and fitness for a particular purpose. Should the mineral lease awarded by the Louisiana State Mineral Board be subsequently modified, cancelled or abrogated due to the existence of conflicting leases, operating agreements, private claims or other future obligations or conditions which may affect all or any portion of the leased Tract, it shall not relieve the Lessee of the obligation to pay any bonus due thereon to the Louisiana State Mineral Board, nor shall the Louisiana State Mineral Board be obligated to refund any consideration paid by the Lessor prior to such modification, cancellation, or abrogation, including, but not limited to, bonuses, rentals and royalties.

NOTE: The Office of Mineral Resources will require a minimum bonus of \$130 per acre and a minimum royalty of 21%.

NOTE: The State of Louisiana does hereby reserve, and this lease shall be subject to, the imprescriptible right of surface use in the nature of a servitude in favor of the Department of Natural Resources, including its Offices and Commissions, for the sole purpose of implementing,

constructing, servicing and maintaining approved coastal zone management and/or restoration projects. Utilization of any and all rights derived under this lease by the mineral lessee, its agents, successors or assigns, shall not interfere with nor hinder the reasonable surface use by the Department of Natural Resources, its Offices or Commissions, as herein above reserved.

Applicant: THEOPHILUS OIL, GAS & LAND SERVICES, LLC

Bidder	Cash Payment	Price/ Acre	Rental	Oil	Gas	Other

