

TRACT 39272 - Portion of Block 33, Chandeleur Sound Addition Area, Revised, St. Bernard Parish, Louisiana

The beds and bottoms of all water bodies belonging to the State of Louisiana located in Block 33, Chandeleur Sound Addition Area, Revised, together with any present lands formed by accretion to the shoreline or islands formed therein, located in St. Bernard Parish, Louisiana, owned by and not presently under mineral lease as of August 8, 2007, from the State of Louisiana, the geographical area of which is more fully described as follows: Beginning at the Northeast corner of Block 33, Chandeleur Sound Area Addition, Revised, having Coordinates of X = 2,782,850.00 and Y = 514,080.00; thence South 6,206.33 feet along the East line of said Block 33 to a point on the Louisiana Coastline, as decreed by the Supreme Court of the United States, as determined by a Special Master appointed therein, in litigation styled *United States v. State of Louisiana et al No. 9 Original*, in 1975, having Coordinates of X = 2,782,850.00 and Y = 507,873.67; thence along said coastline the following courses: Northwesterly on a straight line to a point having Coordinates of X = 2,782,059.00 and Y = 508,914.00, Northwesterly on a straight line to a point having Coordinates of X = 2,780,766.00 and Y = 510,417.00, Northwesterly on a straight line to a point having Coordinates of X = 2,779,032.00 and Y = 512,013.00, Northwesterly on a straight line to a point having Coordinates of X = 2,777,512.00 and Y = 513,071.00, Northwesterly on a straight line to a point having Coordinates of X = 2,775,787.00 and Y = 513,796.00 and Northwesterly on a straight line to a point on the North line of said Block 33, having Coordinates of X = 2,775,666.50 and Y = 514,080.00; thence East 7,183.50 feet along the North line of said Block 33 to the point of beginning, containing approximately **428.00 acres**, all as more particularly outlined on a plat on file in the Office of Mineral Resources, Department of Natural Resources. All bearings, distances and coordinates are based on Louisiana Coordinate System of 1927, (North or South Zone).

NOTE: The above description of the Tract nominated for lease has been provided and corrected, where required, exclusively by the nomination party. Any mineral lease selected from this Tract and awarded by the Louisiana State Mineral Board shall be without warranty of any kind, either express, implied, or statutory, including, but not limited to, the implied warranties of merchantability and fitness for a particular purpose. Should the mineral lease awarded by the Louisiana State Mineral Board be subsequently modified, cancelled or abrogated due to the existence of conflicting leases, operating agreements, private claims or other future obligations or conditions which may affect all or any portion of the leased Tract, it shall not relieve the Lessee of the obligation to pay any bonus due thereon to the Louisiana State Mineral Board, nor shall the Louisiana State Mineral Board be obligated to refund any consideration paid by the Lessor prior to such modification, cancellation, or abrogation, including, but not limited to, bonuses, rentals and royalties.

NOTE: The Office of Mineral Resources will require a minimum bonus of \$130 per acre and a minimum royalty of 21%.

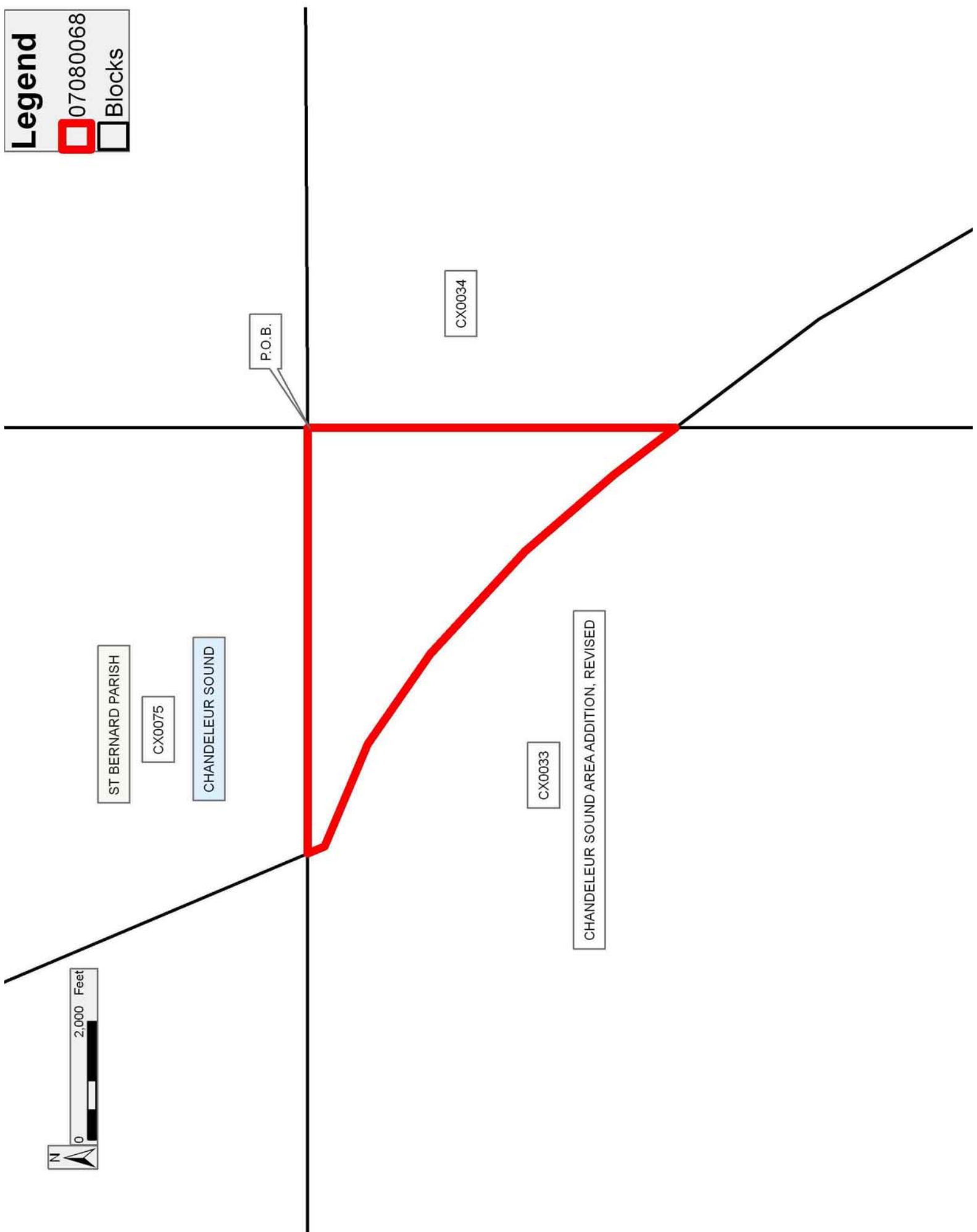
NOTE: The State of Louisiana does hereby reserve, and this lease shall be subject to, the imprescriptible right of surface use in the nature of a servitude in favor of the Department of Natural Resources, including its Offices and Commissions, for the sole purpose of implementing, constructing, servicing and maintaining approved coastal zone management and/or restoration projects. Utilization of any and all rights derived under this lease by the mineral lessee, its agents, successors or assigns, shall not interfere with nor hinder the reasonable surface use by the Department of Natural Resources, its Offices or Commissions, as herein above reserved.

Applicant: THEOPHILUS OIL, GAS & LAND SERVICES, LLC

Bidder	Cash Payment	Price/Acre	Rental	Oil	Gas	Other

Legend

-  07080068
-  Blocks



TRACT 39273 - Portion of Block 34, Chandeleur Sound Addition Area, Revised, St. Bernard Parish, Louisiana

The beds and bottoms of all water bodies belonging to the State of Louisiana located in Block 34, Chandeleur Sound Addition Area, Revised, together with any present lands formed by accretion to the shoreline or islands formed therein, located in St. Bernard Parish, Louisiana, owned by and not presently under mineral lease as of August 8, 2007, from the State of Louisiana, the geographical area of which is more fully described as follows: Beginning at the Northwest corner of Block 34, Chandeleur Sound Area Addition, Revised, having Coordinates of X = 2,782,850.00 and Y = 514,152.45; thence East 7,379.02 feet along the North line of said Block 34 to a point having Coordinates of X = 2,790,229.02 and Y = 514,152.45; thence South 14,758.05 feet to a point on the South line of said Block 34, having Coordinates of X = 2,790,229.02 and Y = 499,394.40; thence West 2,000.90 feet along the South line of said Block 34 to a point on the Louisiana Coastline, as decreed by the Supreme Court of the United States, as determined by a Special Master appointed therein, in litigation styled *United States v. State of Louisiana et al No. 9 Original*, in 1975, having Coordinates of X = 2,788,228.12 and Y = 499,394.40; thence along the said coastline the following courses: Northwesterly on a straight line to a point having Coordinates of X = 2,784,689.00 and Y = 505,455.00 and Northwesterly on a straight line to a point on the West line of said Block 34, having Coordinates of X = 2,782,850.00 and Y = 507,873.67; thence North 6,278.78 feet along the West line of said Block 34 to the point of beginning, containing approximately **1,946.88 acres**, all as more particularly outlined on a plat on file in the Office of Mineral Resources, Department of Natural Resources. All bearings, distances and coordinates are based on Louisiana Coordinate System of 1927, (North or South Zone).

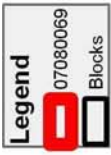
NOTE: The above description of the Tract nominated for lease has been provided and corrected, where required, exclusively by the nomination party. Any mineral lease selected from this Tract and awarded by the Louisiana State Mineral Board shall be without warranty of any kind, either express, implied, or statutory, including, but not limited to, the implied warranties of merchantability and fitness for a particular purpose. Should the mineral lease awarded by the Louisiana State Mineral Board be subsequently modified, cancelled or abrogated due to the existence of conflicting leases, operating agreements, private claims or other future obligations or conditions which may affect all or any portion of the leased Tract, it shall not relieve the Lessee of the obligation to pay any bonus due thereon to the Louisiana State Mineral Board, nor shall the Louisiana State Mineral Board be obligated to refund any consideration paid by the Lessor prior to such modification, cancellation, or abrogation, including, but not limited to, bonuses, rentals and royalties.

NOTE: The Office of Mineral Resources will require a minimum bonus of \$130 per acre and a minimum royalty of 21%.

NOTE: The State of Louisiana does hereby reserve, and this lease shall be subject to, the imprescriptible right of surface use in the nature of a servitude in favor of the Department of Natural Resources, including its Offices and Commissions, for the sole purpose of implementing, constructing, servicing and maintaining approved coastal zone management and/or restoration projects. Utilization of any and all rights derived under this lease by the mineral lessee, its agents, successors or assigns, shall not interfere with nor hinder the reasonable surface use by the Department of Natural Resources, its Offices or Commissions, as herein above reserved.

Applicant: THEOPHILUS OIL, GAS & LAND SERVICES, LLC

Bidder	Cash Payment	Price/Acre	Rental	Oil	Gas	Other



ST BERNARD PARISH

CHANDELEUR SOUND

CHANDELEUR SOUND AREA ADDITION, REVISED

CX0076

CX0034

CX0035

P.O.B.

CX0075

CX0033



TRACT 39274 - Portion of Block 34, Chandeleur Sound Addition Area, Revised, St. Bernard Parish, Louisiana

The beds and bottoms of all water bodies belonging to the State of Louisiana located in Block 34, Chandeleur Sound Addition Area, Revised, together with any present lands formed by accretion to the shoreline or islands formed therein, located in St. Bernard Parish, Louisiana, owned by and not presently under mineral lease as of August 8, 2007, from the State of Louisiana, the geographical area of which is more fully described as follows: Beginning at a point on the North line of Block 34, Chandeleur Sound Area Addition, Revised, having Coordinates of X = 2,790,229.02 and Y = 514,152.45; thence East 7,379.03 feet along the North line of said Block 34 to its Northeast corner having Coordinates of X = 2,797,608.05 and Y = 514,152.45; thence South 14,758.05 feet along the East line of said Block 34 to its Southeast corner, having Coordinates of X = 2,797,608.05 and Y = 499,394.40; thence West 7,379.03 feet along the South line of said Block 34 to a point having Coordinates of X = 2,790,229.02 and Y = 499,394.40; thence North 14,758.05 feet to the point of beginning, containing approximately **2,500.00 acres**, all as more particularly outlined on a plat on file in the Office of Mineral Resources, Department of Natural Resources. All bearings, distances and coordinates are based on Louisiana Coordinate System of 1927, (North or South Zone).

NOTE: The above description of the Tract nominated for lease has been provided and corrected, where required, exclusively by the nomination party. Any mineral lease selected from this Tract and awarded by the Louisiana State Mineral Board shall be without warranty of any kind, either express, implied, or statutory, including, but not limited to, the implied warranties of merchantability and fitness for a particular purpose. Should the mineral lease awarded by the Louisiana State Mineral Board be subsequently modified, cancelled or abrogated due to the existence of conflicting leases, operating agreements, private claims or other future obligations or conditions which may affect all or any portion of the leased Tract, it shall not relieve the Lessee of the obligation to pay any bonus due thereon to the Louisiana State Mineral Board, nor shall the Louisiana State Mineral Board be obligated to refund any consideration paid by the Lessor prior to such modification, cancellation, or abrogation, including, but not limited to, bonuses, rentals and royalties.

NOTE: The Office of Mineral Resources will require a minimum bonus of \$130 per acre and a minimum royalty of 21%.

NOTE: The State of Louisiana does hereby reserve, and this lease shall be subject to, the imprescriptible right of surface use in the nature of a servitude in favor of the Department of Natural Resources, including its Offices and Commissions, for the sole purpose of implementing, constructing, servicing and maintaining approved coastal zone management and/or restoration projects. Utilization of any and all rights derived under this lease by the mineral lessee, its agents, successors or assigns, shall not interfere with nor hinder the reasonable surface use by the

Department of Natural Resources, its Offices or Commissions, as herein above reserved.

Applicant: THEOPHILUS OIL, GAS & LAND SERVICES, LLC

Bidder	Cash Payment	Price/Acre	Rental	Oil	Gas	Other

Legend
07080071
Blocks

ST BERNARD PARISH

CHANDELEUR SOUND

CHANDELEUR SOUND AREA ADDITION, REVISED

CX0076

P.O.B.

CX0034

CX0077

CX0035

CA0001

CHANDELEUR AREA



TRACT 39275 - Portion of Block 77, Chandeleur Sound Addition Area, Revised, St. Bernard Parish, Louisiana

The beds and bottoms of all water bodies belonging to the State of Louisiana located in Block 77, Chandeleur Sound Addition Area, Revised, together with any present lands formed by accretion to the shoreline or islands formed therein, located in St. Bernard Parish, Louisiana, owned by and not presently under mineral lease as of August 8, 2007, from the State of Louisiana, the geographical area of which is more fully described as follows: Beginning at the Northwest Corner of Block 77, Chandeleur Sound Area Addition, Revised, having Coordinates of X = 2,797,608.05 and Y = 514,152.45; thence East 3,125.25 feet along the North line of said Block 77 to a point on the Three Mile Line, as decreed by the Supreme Court of the United States, as determined by a Special Master appointed therein, in litigation styled *United States v. State of Louisiana et al No. 9 Original*, in 1975, having Coordinates of X = 2,800,733.30 and Y = 514,152.45; thence along the said Three Mile line the following courses: Southeasterly on a straight line to a point having Coordinates of X = 2,804,270 and Y = 508,096; Southeasterly along an arc to the right having a radius of 18,240.60 feet and a center at X = 2,788,518 and Y = 498,898 to a point having Coordinates of X = 2,804,495 and Y = 507,699 and Southeasterly on a straight line to a point having Coordinates of X = 2,804,987.07 and Y = 506,805.70; thence South 7,411.30 feet to a point on the South line of said Block 77, having Coordinates of X = 2,804,987.07 and Y = 499,394.40; thence West 7,379.02 feet along the South line of said Block 77 to its Southwest corner having Coordinates of X = 2,797,608.05 and Y = 499,394.40; thence North 14,758.05 feet along the West line of said Block 77 to the point of beginning, containing approximately **2,143.88 acres, LESS AND EXCEPT** that portion thereof, if any, lying seaward of the line three nautical miles from the coast line of Louisiana, as said three mile line has been decreed by the Supreme Court of the United States, as determined by a Special Master appointed therein, in litigation styled **United States v. State of Louisiana et al No. 9 Original**, in 1975, all as more particularly outlined on a plat in the Office of Mineral Resources, Department of Natural Resources. All bearings, distances and coordinates are based on the Louisiana Coordinate System of 1927, (South Zone).

NOTE: The above description of the Tract nominated for lease has been provided and corrected, where required, exclusively by the nomination party. Any mineral lease selected from this Tract and awarded by the Louisiana State Mineral Board shall be without warranty of any kind, either express, implied, or statutory, including, but not limited to, the implied warranties of merchantability and fitness for a particular purpose. Should the mineral lease awarded by the Louisiana State Mineral Board be subsequently modified, cancelled or abrogated due to the existence of conflicting leases, operating agreements, private claims or other future obligations or conditions which may affect all or any portion of the leased Tract, it shall not relieve the Lessee of the obligation to pay any bonus due thereon to the Louisiana State Mineral Board, nor shall the Louisiana State Mineral Board be obligated to refund any consideration

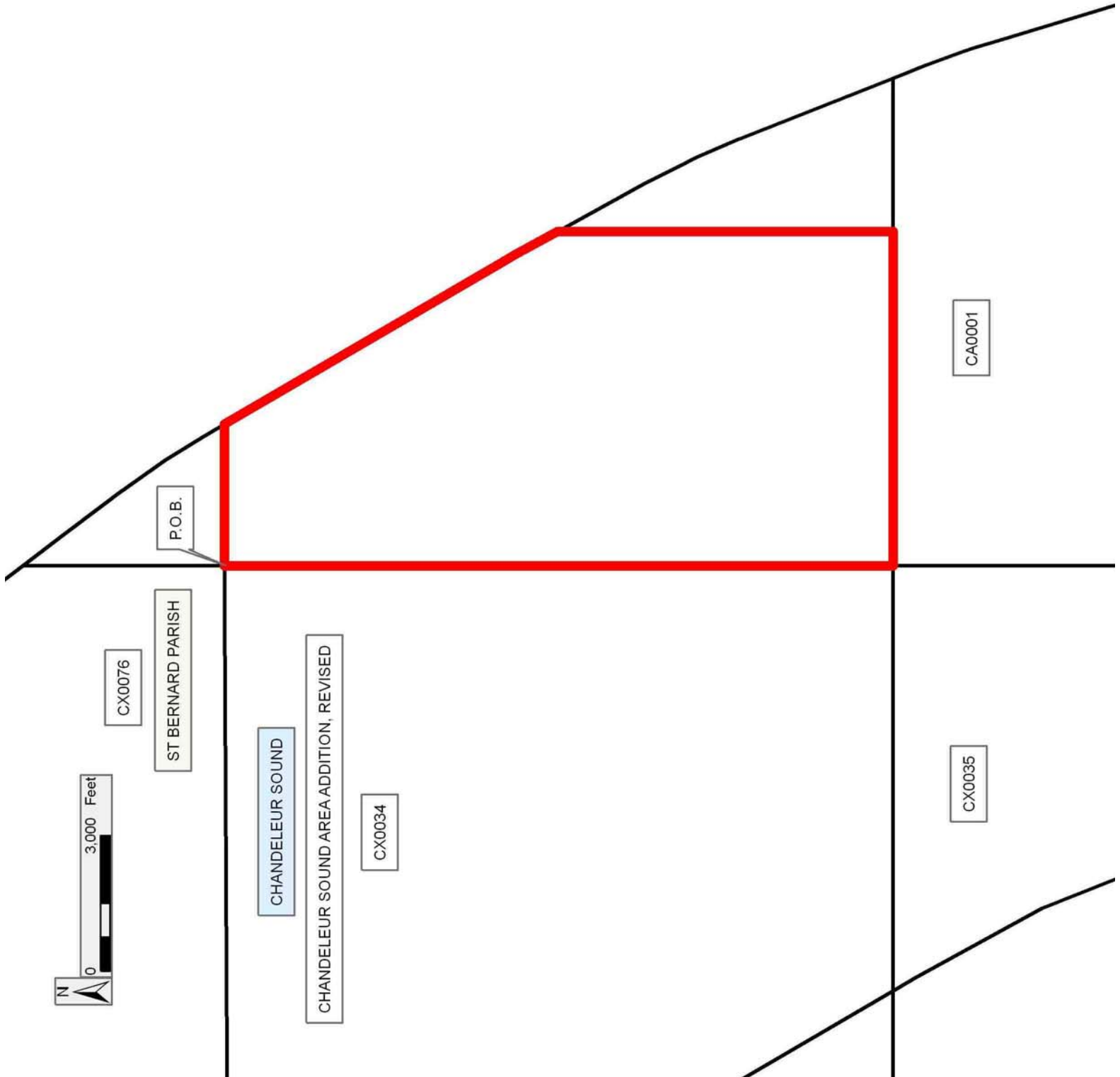
paid by the Lessor prior to such modification, cancellation, or abrogation, including, but not limited to, bonuses, rentals and royalties.

NOTE: The Office of Mineral Resources will require a minimum bonus of \$130 per acre and a minimum royalty of 21%.

NOTE: The State of Louisiana does hereby reserve, and this lease shall be subject to, the imprescriptible right of surface use in the nature of a servitude in favor of the Department of Natural Resources, including its Offices and Commissions, for the sole purpose of implementing, constructing, servicing and maintaining approved coastal zone management and/or restoration projects. Utilization of any and all rights derived under this lease by the mineral lessee, its agents, successors or assigns, shall not interfere with nor hinder the reasonable surface use by the Department of Natural Resources, its Offices or Commissions, as herein above reserved.

Applicant: THEOPHILUS OIL, GAS & LAND SERVICES, LLC

Bidder	Cash Payment	Price/Acre	Rental	Oil	Gas	Other



TRACT 39276 - Portion of Block 1, Chandeleur Area, St. Bernard Parish, Louisiana

The beds and bottoms of all water bodies belonging to the State of Louisiana located in Block 1, Chandeleur Area, together with any present lands formed by accretion to the shoreline or islands formed therein, located in St. Bernard Parish, Louisiana, owned by and not presently under mineral lease as of August 8, 2007, from the State of Louisiana, the geographical area of which is more fully described as follows: Beginning at the Northwest corner of Block 1, Chandeleur Area, having Coordinates of X = 2,797,608.05 and Y = 499,394.40; thence East 10,761.28 feet along the North line of said Block 1 to a point on the Three Mile Line, as decreed by the Supreme Court of the United States, as determined by a Special Master appointed therein, in litigation styled *United States v. State of Louisiana et al No. 9 Original*, in 1975, having Coordinates of

X = 2,808,369.33 and Y = 499,394.40; thence along the said Three Mile line the following courses: Southeasterly on a straight line to a point having Coordinates of X = 2,808,653 and Y = 498,677, Southeasterly along an arc to the right having a radius of 18,240.60 feet and a center at X = 2,791,690 and Y = 491,970 to a point having Coordinates of X = 2,809,151 and Y = 497,245 and Southeasterly on a straight line to a point having Coordinates of X = 2,810,730.90 and Y = 492,015.38; thence West 13,122.85 feet to a point on the West line of said Block 1 having Coordinates of X = 2,797,608.05 and Y = 492,015.38; thence North 7,379.02 feet along the West line of said Block 1 to the point of beginning, containing approximately **2,031.84 acres, LESS AND EXCEPT** that portion thereof, if any, lying seaward of the line three nautical miles from the coast line of Louisiana, as said three mile line has been decreed by the Supreme Court of the United States, as determined by a Special Master appointed therein, in litigation styled **United States v. State of Louisiana et al No. 9 Original**, in 1975, all as more particularly outlined on a plat in the Office of Mineral Resources, Department of Natural Resources. All bearings, distances and coordinates are based on the Louisiana Coordinate System of 1927, (South Zone).

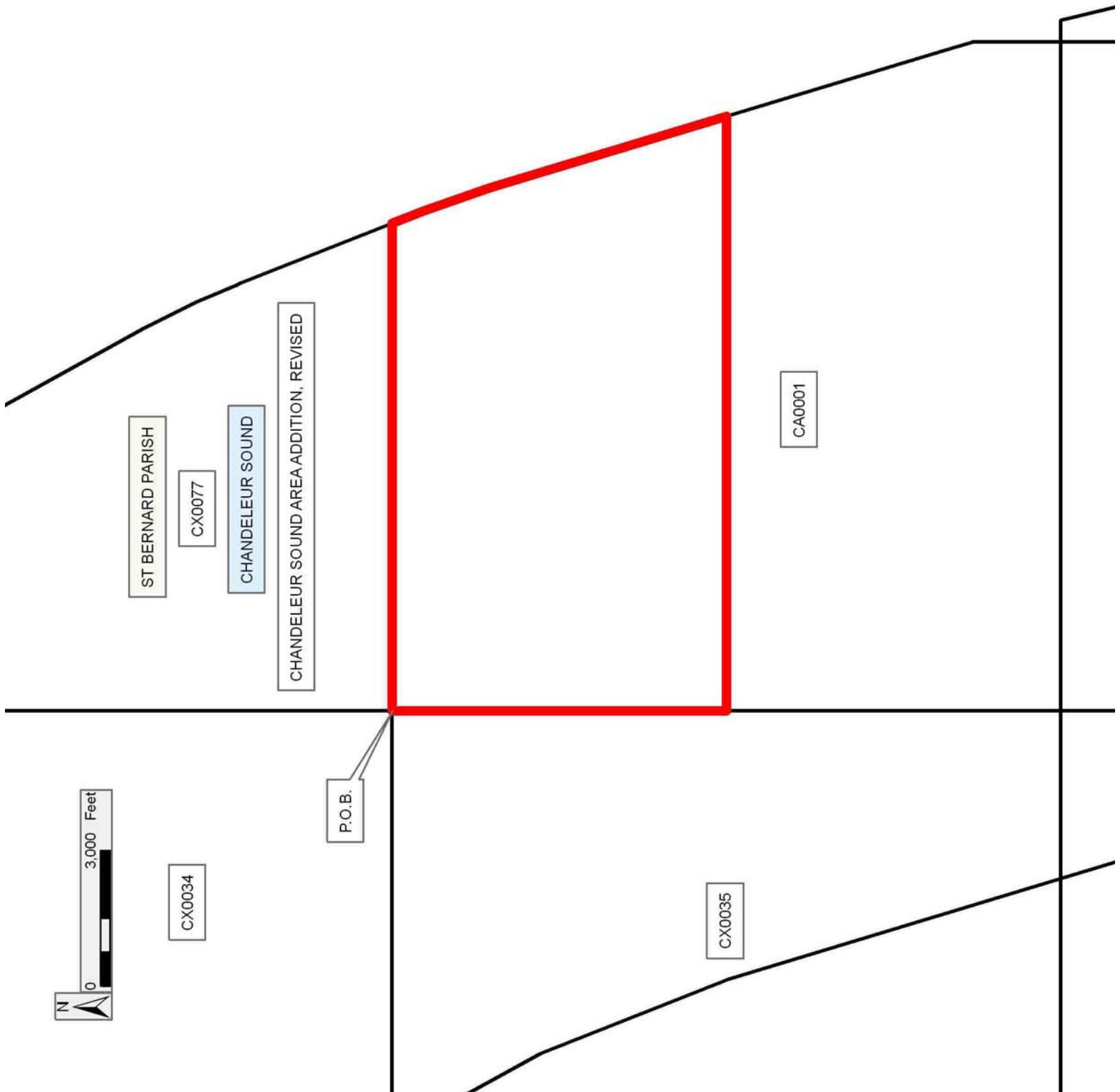
NOTE: The above description of the Tract nominated for lease has been provided and corrected, where required, exclusively by the nomination party. Any mineral lease selected from this Tract and awarded by the Louisiana State Mineral Board shall be without warranty of any kind, either express, implied, or statutory, including, but not limited to, the implied warranties of merchantability and fitness for a particular purpose. Should the mineral lease awarded by the Louisiana State Mineral Board be subsequently modified, cancelled or abrogated due to the existence of conflicting leases, operating agreements, private claims or other future obligations or conditions which may affect all or any portion of the leased Tract, it shall not relieve the Lessee of the obligation to pay any bonus due thereon to the Louisiana State Mineral Board, nor shall the Louisiana State Mineral Board be obligated to refund any consideration paid by the Lessor prior to such modification, cancellation, or abrogation, including, but not limited to, bonuses, rentals and royalties.

NOTE: The Office of Mineral Resources will require a minimum bonus of \$130 per acre and a minimum royalty of 21%.

NOTE: The State of Louisiana does hereby reserve, and this lease shall be subject to, the imprescriptible right of surface use in the nature of a servitude in favor of the Department of Natural Resources, including its Offices and Commissions, for the sole purpose of implementing, constructing, servicing and maintaining approved coastal zone management and/or restoration projects. Utilization of any and all rights derived under this lease by the mineral lessee, its agents, successors or assigns, shall not interfere with nor hinder the reasonable surface use by the Department of Natural Resources, its Offices or Commissions, as herein above reserved.

Applicant: THEOPHILUS OIL, GAS & LAND SERVICES, LLC

Bidder	Cash Payment	Price/Acre	Rental	Oil	Gas	Other



TRACT 39277 - Portion of Block 35, Chandeleur Sound Addition Area, Revised, St. Bernard Parish, Louisiana

The beds and bottoms of all water bodies belonging to the State of Louisiana located in Block 35, Chandeleur Sound Addition Area, Revised, together with any present lands formed by accretion to the shoreline or islands formed therein, located in St. Bernard Parish, Louisiana, owned by and not presently under mineral lease as of August 8, 2007, from the State of Louisiana, the geographical area of which is more fully described as follows: Beginning at the Northeast corner of Block 35, Chandeleur Sound Area Addition, Revised, having Coordinates of X = 2,797,608.05 and Y = 499,394.40; thence South 14,758.05 feet along the East line of said Block 35 to its Southeast corner, having Coordinates of X = 2,797,608.05 and Y = 484,636.35; thence West 3,702.51 feet along the South line of said Block 35 to a point on the Louisiana Coastline, as decreed by the Supreme Court of the United States, as determined by a Special Master appointed therein, in litigation styled *United States v. State of Louisiana et al No. 9 Original*, in 1975, having Coordinates of X = 2,793,905.54 and Y = 484,636.35; thence along the said coastline the following courses: Northwesterly on a straight line to a point having Coordinates of X = 2,791,690.00 and Y = 491,970.00, Northwesterly on a straight line to a point having Coordinates of X = 2,790,051.00 and Y = 496,115.00, Northwesterly on a straight line to a point having Coordinates of X = 2,788,518.00 and Y = 498,898.00 and Northwesterly on a straight line to a point on the North line of said Block 35, having Coordinates of X = 2,788,228.12 and Y = 499,394.40; thence East 9,379.93 feet along the North line of said Block 35 to the point of beginning, containing approximately **2,087.99 acres**, all as more particularly outlined on a plat on file in the Office of Mineral Resources, Department of Natural Resources. All bearings, distances and coordinates are based on Louisiana Coordinate System of 1927, (North or South Zone).

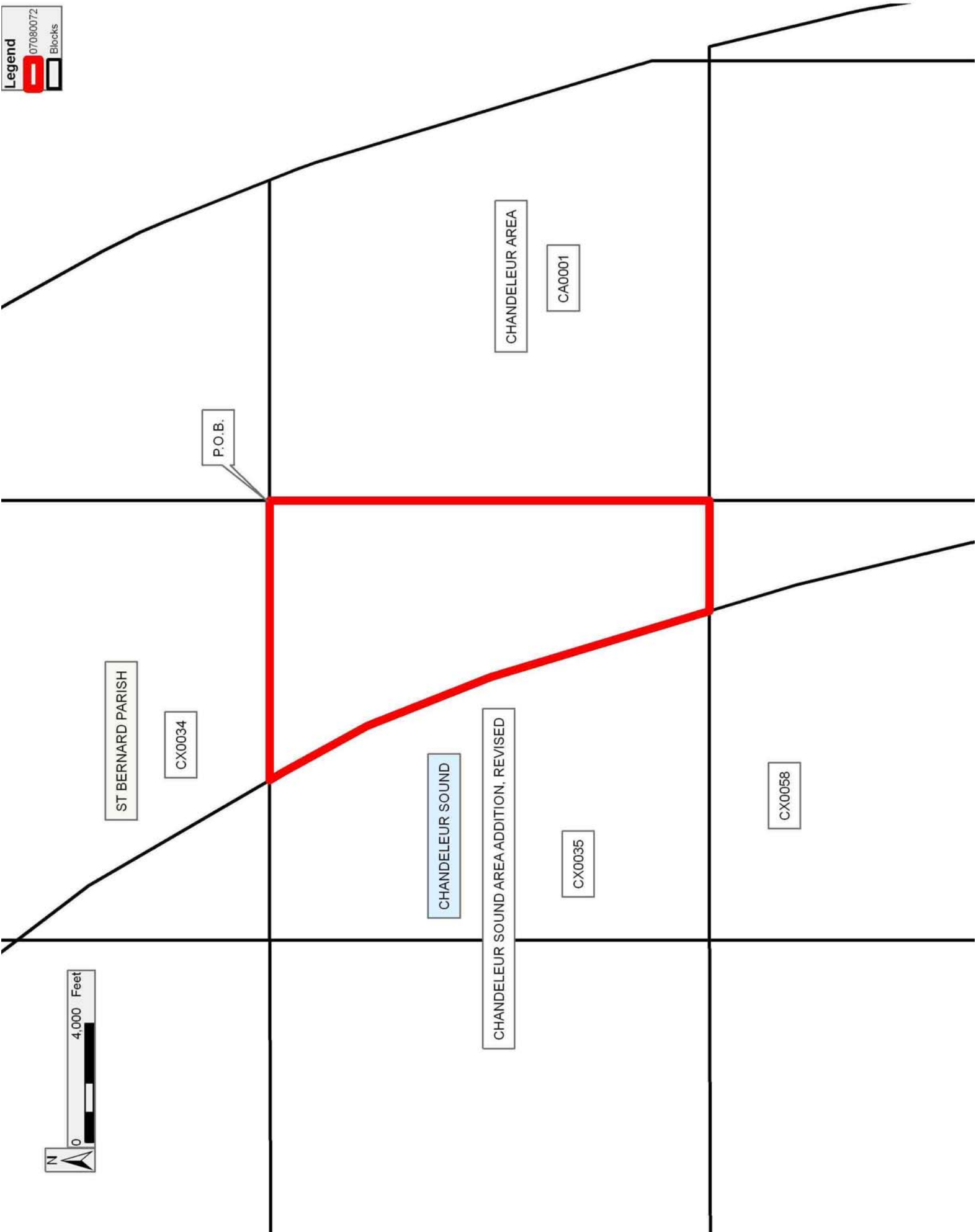
NOTE: The above description of the Tract nominated for lease has been provided and corrected, where required, exclusively by the nomination party. Any mineral lease selected from this Tract and awarded by the Louisiana State Mineral Board shall be without warranty of any kind, either express, implied, or statutory, including, but not limited to, the implied warranties of merchantability and fitness for a particular purpose. Should the mineral lease awarded by the Louisiana State Mineral Board be subsequently modified, cancelled or abrogated due to the existence of conflicting leases, operating agreements, private claims or other future obligations or conditions which may affect all or any portion of the leased Tract, it shall not relieve the Lessee of the obligation to pay any bonus due thereon to the Louisiana State Mineral Board, nor shall the Louisiana State Mineral Board be obligated to refund any consideration paid by the Lessor prior to such modification, cancellation, or abrogation, including, but not limited to, bonuses, rentals and royalties.

NOTE: The Office of Mineral Resources will require a minimum bonus of \$130 per acre and a minimum royalty of 21%.

NOTE: The State of Louisiana does hereby reserve, and this lease shall be subject to, the imprescriptible right of surface use in the nature of a servitude in favor of the Department of Natural Resources, including its Offices and Commissions, for the sole purpose of implementing, constructing, servicing and maintaining approved coastal zone management and/or restoration projects. Utilization of any and all rights derived under this lease by the mineral lessee, its agents, successors or assigns, shall not interfere with nor hinder the reasonable surface use by the Department of Natural Resources, its Offices or Commissions, as herein above reserved.

Applicant: THEOPHILUS OIL, GAS & LAND SERVICES, LLC

Bidder	Cash Payment	Price/Acre	Rental	Oil	Gas	Other



TRACT 39278 - Portion of Block 1, Chandeleur Area, St. Bernard Parish, Louisiana

The beds and bottoms of all water bodies belonging to the State of Louisiana located in Block 1, Chandeleur Area, together with any present lands formed by accretion to the shoreline or islands formed therein, located in St. Bernard Parish, Louisiana, owned by and not presently under mineral lease as of August 8, 2007, from the State of Louisiana, the geographical area of which is more fully described as follows: Beginning at a point on the West line of Block 1, Chandeleur Area, having Coordinates of X = 2,797,608.05 and Y = 492,015.38; thence East 13,122.85 feet to a point on the Three Mile Line, as decreed by the Supreme Court of the United States, as determined by a Special Master appointed therein, in litigation styled *United States v. State of Louisiana et al No. 9 Original*, in 1975, having Coordinates of X = 2,810,730.90 and Y = 492,015.38; thence along the said Three Mile line the following courses: Southeasterly on a straight line to a point having Coordinates of X = 2,812,250 and Y = 486,987 and Southeasterly along an arc to the right having a radius of 18,240.60 feet and a center at X = 2,794,789 and Y = 481,712 to a point on the East line of said Block 1 having Coordinates of X = 2,812,366.10 and Y = 486,585.91; thence South 1,949.56 feet along the East line of said Block 1 to its Southeast corner having Coordinates of X = 2,812,366.10 and Y = 484,636.35; thence West 14,758.05 feet along the South line of said Block 1 to its Southwest corner having Coordinates of X = 2,797,608.05 and Y = 484,636.35; thence North 7,379.03 feet along the West line of said Block 1 to the point of beginning, containing approximately **2,398.39 acres, LESS AND EXCEPT** that portion thereof, if any, lying seaward of the line three nautical miles from the coast line of Louisiana, as said three mile line has been decreed by the Supreme Court of the United States, as determined by a Special Master appointed therein, in litigation styled **United States v. State of Louisiana et al No. 9 Original**, in 1975, all as more particularly outlined on a plat in the Office of Mineral Resources, Department of Natural Resources. All bearings, distances and coordinates are based on the Louisiana Coordinate System of 1927, (South Zone).

NOTE: The above description of the Tract nominated for lease has been provided and corrected, where required, exclusively by the nomination party. Any mineral lease selected from this Tract and awarded by the Louisiana State Mineral Board shall be without warranty of any kind, either express, implied, or statutory, including, but not limited to, the implied warranties of merchantability and fitness for a particular purpose. Should the mineral lease awarded by the Louisiana State Mineral Board be subsequently modified, cancelled or abrogated due to the existence of conflicting leases, operating agreements, private claims or other future obligations or conditions which may affect all or any portion of the leased Tract, it shall not relieve the Lessee of the obligation to pay any bonus due thereon to the Louisiana State Mineral Board, nor shall the Louisiana State Mineral Board be obligated to refund any consideration

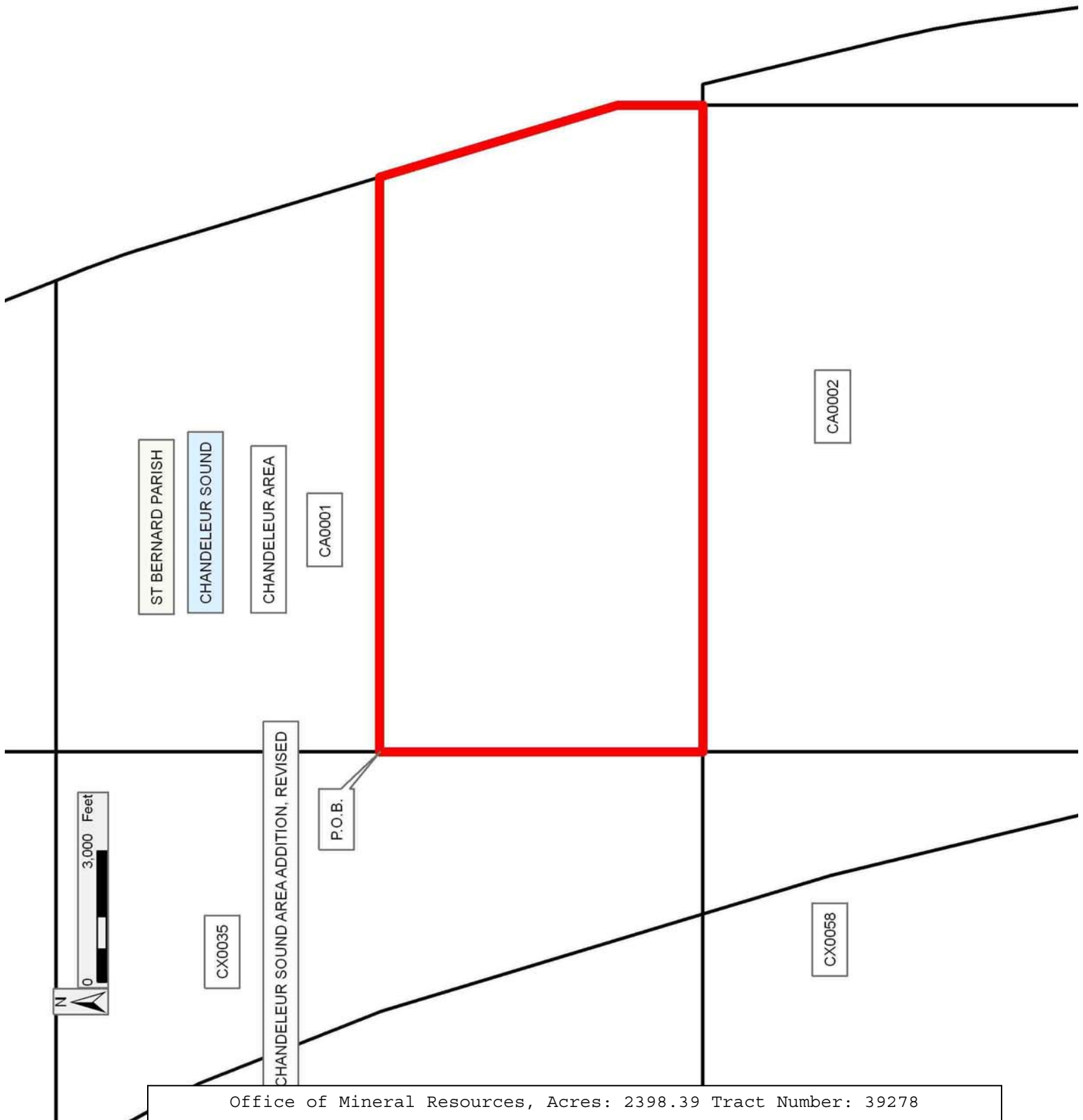
paid by the Lessor prior to such modification, cancellation, or abrogation, including, but not limited to, bonuses, rentals and royalties.

NOTE: The Office of Mineral Resources will require a minimum bonus of \$130 per acre and a minimum royalty of 21%.

NOTE: The State of Louisiana does hereby reserve, and this lease shall be subject to, the imprescriptible right of surface use in the nature of a servitude in favor of the Department of Natural Resources, including its Offices and Commissions, for the sole purpose of implementing, constructing, servicing and maintaining approved coastal zone management and/or restoration projects. Utilization of any and all rights derived under this lease by the mineral lessee, its agents, successors or assigns, shall not interfere with nor hinder the reasonable surface use by the Department of Natural Resources, its Offices or Commissions, as herein above reserved.

Applicant: THEOPHILUS OIL, GAS & LAND SERVICES, LLC

Bidder	Cash Payment	Price/Acre	Rental	Oil	Gas	Other



TRACT 39279 - Portion of Block 58, Chandeleur Sound Addition Area, Revised, St. Bernard Parish, Louisiana

The beds and bottoms of all water bodies belonging to the State of Louisiana located in Block 58, Chandeleur Sound Addition Area, Revised, together with any present lands formed by accretion to the shoreline or islands formed therein, located in St. Bernard Parish, Louisiana, owned by and not presently under mineral lease as of August 8, 2007, from the State of Louisiana, the geographical area of which is more fully described as follows: Beginning at the Northeast corner of Block 58, Chandeleur Sound Area Addition, Revised, having Coordinates of X = 2,797,608.05 and Y = 484,636.35; thence South 14,758.05 feet along the East line of said Block 58 to its Southeast corner, having Coordinates of X = 2,797,608.05 and Y = 469,878.30; thence West 557.21 feet along the South line of said Block 58 to a point on the Louisiana Coastline, as decreed by the Supreme Court of the United States, as determined by a Special Master appointed therein, in litigation styled *United States v. State of Louisiana et al No. 9 Original*, in 1975, having Coordinates of X = 2,797,050.84 and Y = 469,878.30; thence along the said coastline the following courses: Northwesterly on a straight line to a point having Coordinates of X = 2,796,202.00 and Y = 475,864.00, Northwesterly on a straight line to a point having Coordinates of X = 2,794,789.00 and Y = 481,712.00 and Northwesterly on a straight line to a point on the North line of said Block 58, having Coordinates of X = 2,793,905.54 and Y = 484,636.35; thence East 3,702.51 feet along the North line of said Block 58 to the point of beginning, containing approximately **637.41 acres**, all as more particularly outlined on a plat on file in the Office of Mineral Resources, Department of Natural Resources. All bearings, distances and coordinates are based on Louisiana Coordinate System of 1927, (North or South Zone).

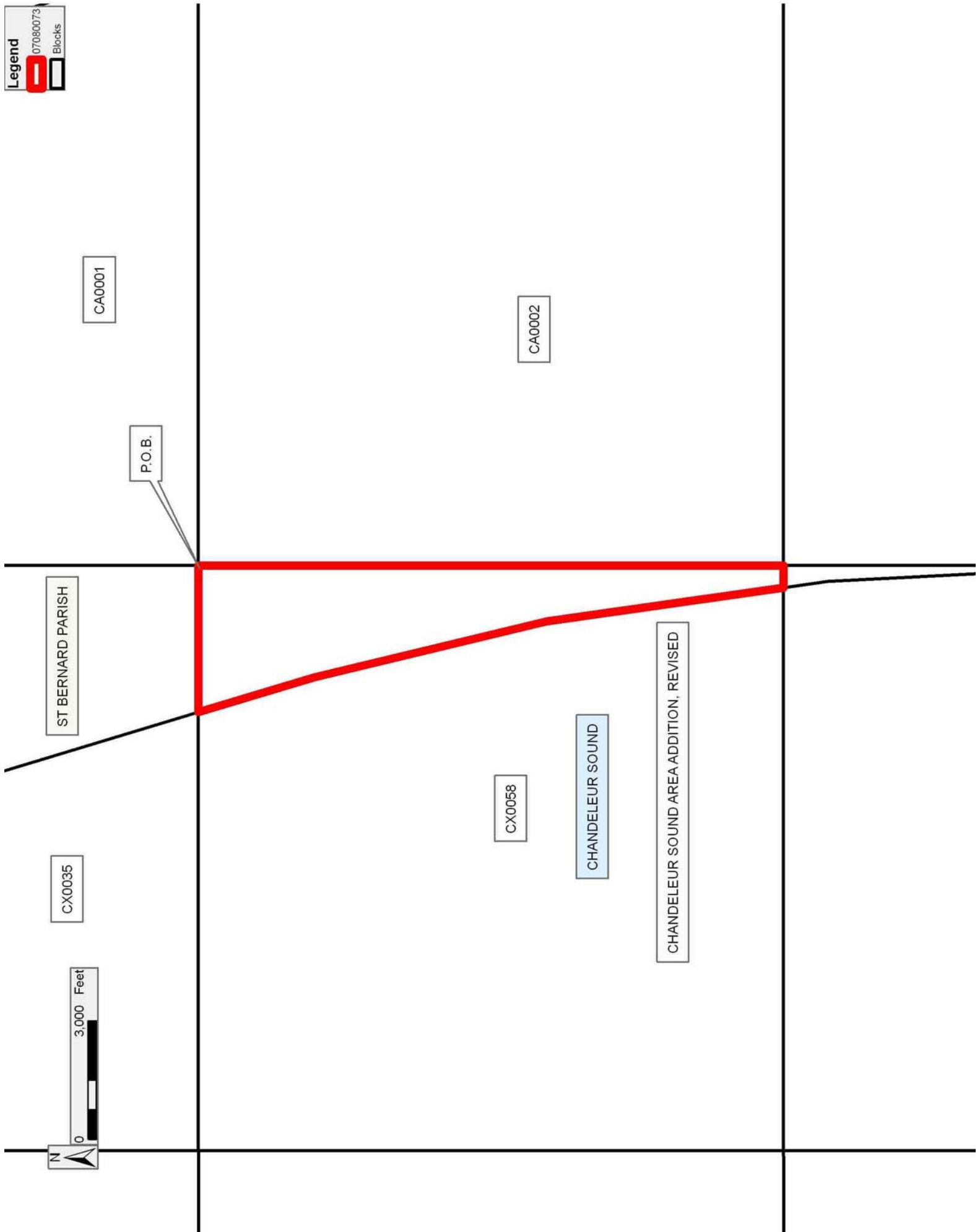
NOTE: The above description of the Tract nominated for lease has been provided and corrected, where required, exclusively by the nomination party. Any mineral lease selected from this Tract and awarded by the Louisiana State Mineral Board shall be without warranty of any kind, either express, implied, or statutory, including, but not limited to, the implied warranties of merchantability and fitness for a particular purpose. Should the mineral lease awarded by the Louisiana State Mineral Board be subsequently modified, cancelled or abrogated due to the existence of conflicting leases, operating agreements, private claims or other future obligations or conditions which may affect all or any portion of the leased Tract, it shall not relieve the Lessee of the obligation to pay any bonus due thereon to the Louisiana State Mineral Board, nor shall the Louisiana State Mineral Board be obligated to refund any consideration paid by the Lessor prior to such modification, cancellation, or abrogation, including, but not limited to, bonuses, rentals and royalties.

NOTE: The Office of Mineral Resources will require a minimum bonus of \$130 per acre and a minimum royalty of 21%.

NOTE: The State of Louisiana does hereby reserve, and this lease shall be subject to, the imprescriptible right of surface use in the nature of a servitude in favor of the Department of Natural Resources, including its Offices and Commissions, for the sole purpose of implementing, constructing, servicing and maintaining approved coastal zone management and/or restoration projects. Utilization of any and all rights derived under this lease by the mineral lessee, its agents, successors or assigns, shall not interfere with nor hinder the reasonable surface use by the Department of Natural Resources, its Offices or Commissions, as herein above reserved.

Applicant: THEOPHILUS OIL, GAS & LAND SERVICES, LLC

Bidder	Cash Payment	Price/Acre	Rental	Oil	Gas	Other



ST BERNARD PARISH

P.O.B.

CX0035

CA0001

CX0058

CA0002

CHANDELEUR SOUND

CHANDELEUR SOUND AREA ADDITION, REVISED



TRACT 39280 - Portion of Block 2, Chandeleur Area, St. Bernard Parish, Louisiana

The beds and bottoms of all water bodies belonging to the State of Louisiana located in Block 2, Chandeleur Area, together with any present lands formed by accretion to the shoreline or islands formed therein, located in St. Bernard Parish, Louisiana, owned by and not presently under mineral lease as of August 8, 2007, from the State of Louisiana, the geographical area of which is more fully described as follows: Beginning at Northwest corner of Block 2, Chandeleur Area, having Coordinates of X = 2,797,608.05 and Y = 484,636.35; thence East 14,758.05 feet along the North line of said Block 2 to its Northeast corner having Coordinates of X = 2,812,366.10 and Y = 484,636.35; thence South 7,379.02 feet along the East line of said Block 2 to a point having Coordinates of X = 2,812,366.10 and Y = 477,257.33; thence West 14,758.05 feet to a point on the West line of said Block 2 having Coordinates of X = 2,797,608.05 and Y = 477,257.33; thence North 7,379.02 feet along the West line of said Block 2 to the point of beginning, containing approximately **2,500.00 acres, LESS AND EXCEPT** that portion thereof, if any, lying seaward of the line three nautical miles from the coast line of Louisiana, as said three mile line has been decreed by the Supreme Court of the United States, as determined by a Special Master appointed therein, in litigation styled **United States v. State of Louisiana et al No. 9 Original**, in 1975, all as more particularly outlined on a plat in the Office of Mineral Resources, Department of Natural Resources. All bearings, distances and coordinates are based on the Louisiana Coordinate System of 1927, (South Zone).

NOTE: The above description of the Tract nominated for lease has been provided and corrected, where required, exclusively by the nomination party. Any mineral lease selected from this Tract and awarded by the Louisiana State Mineral Board shall be without warranty of any kind, either express, implied, or statutory, including, but not limited to, the implied warranties of merchantability and fitness for a particular purpose. Should the mineral lease awarded by the Louisiana State Mineral Board be subsequently modified, cancelled or abrogated due to the existence of conflicting leases, operating agreements, private claims or other future obligations or conditions which may affect all or any portion of the leased Tract, it shall not relieve the Lessee of the obligation to pay any bonus due thereon to the Louisiana State Mineral Board, nor shall the Louisiana State Mineral Board be obligated to refund any consideration paid by the Lessor prior to such modification, cancellation, or abrogation, including, but not limited to, bonuses, rentals and royalties.



NOTE: The Office of Mineral Resources will require a minimum bonus of \$130 per acre and a minimum royalty of 21%.

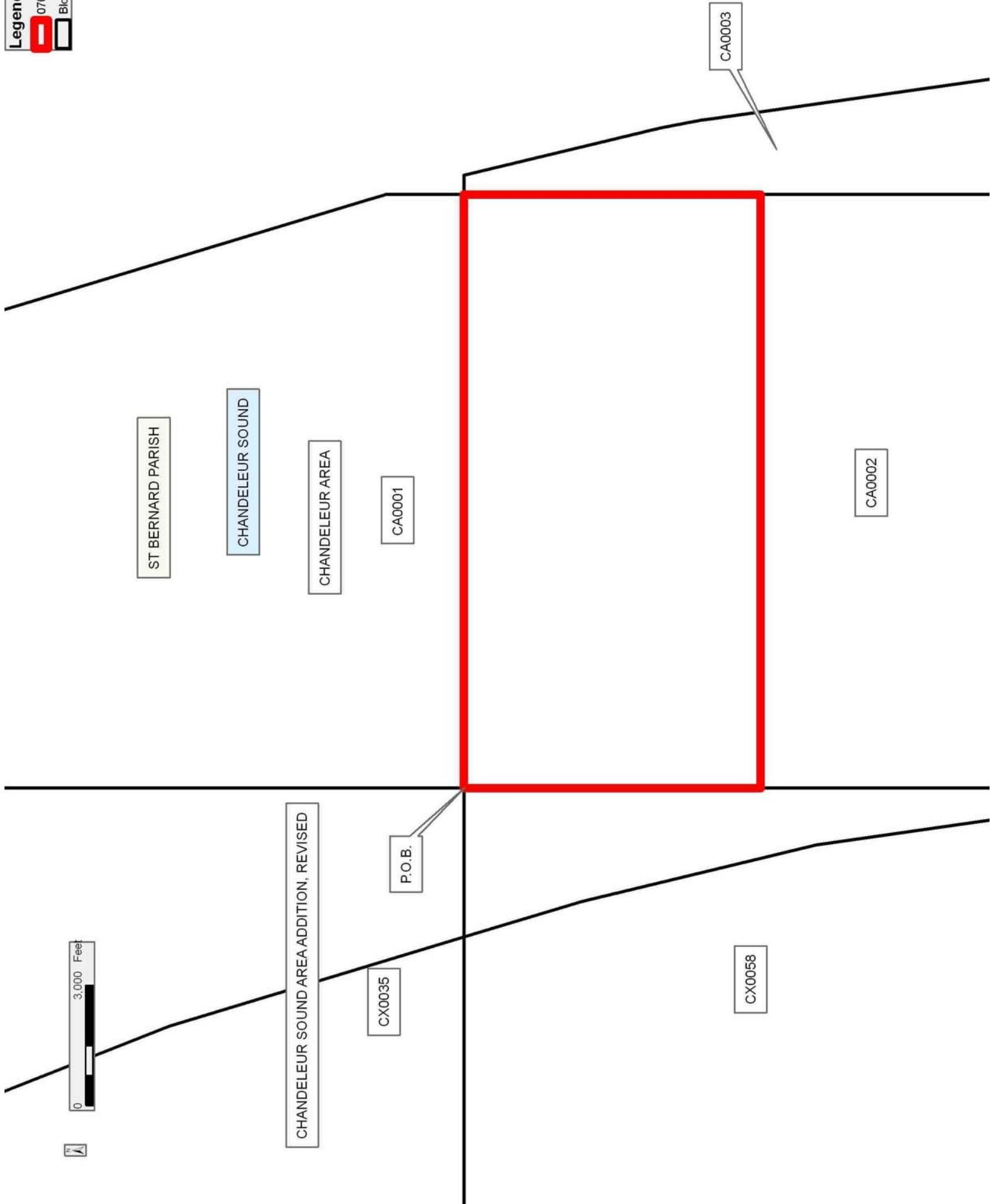
NOTE: The State of Louisiana does hereby reserve, and this lease shall be subject to, the imprescriptible right of surface use in the nature of a servitude in favor of the Department of Natural Resources, including its Offices and Commissions, for the sole purpose of implementing,

constructing, servicing and maintaining approved coastal zone management and/or restoration projects. Utilization of any and all rights derived under this lease by the mineral lessee, its agents, successors or assigns, shall not interfere with nor hinder the reasonable surface use by the Department of Natural Resources, its Offices or Commissions, as herein above reserved.

Applicant: THEOPHILUS OIL, GAS & LAND SERVICES, LLC

Bidder	Cash Payment	Price/Acre	Rental	Oil	Gas	Other

Legend
 07080070
 Blocks



TRACT 39281 - Portion of Block 2, Chandeleur Area, St. Bernard Parish, Louisiana

The beds and bottoms of all water bodies belonging to the State of Louisiana located in Block 2, Chandeleur Area, together with any present lands formed by accretion to the shoreline or islands formed therein, located in St. Bernard Parish, Louisiana, owned by and not presently under mineral lease as of August 8, 2007, from the State of Louisiana, the geographical area of which is more fully described as follows: Beginning at a point on the West line of Block 2, Chandeleur Area, having Coordinates of X = 2,797,608.05 and Y = 477,257.33; thence East 14,758.05 feet to a point on the East line of said Block 2 having Coordinates of X = 2,812,366.10 and Y = 477,257.33; thence South 7,379.03 feet along the East line of said Block 2 to its Southeast corner having Coordinates of X = 2,812,366.10 and Y = 469,878.30; thence West 14,758.05 feet along the South line of said Block 2 to its Southwest corner having Coordinates of X = 2,797,608.05 and Y = 469,878.30; thence North 7,379.03 feet along the West line of said Block 2 to the point of beginning, containing approximately **2,500.00 acres**, all as more particularly outlined on a plat on file in the Office of Mineral Resources, Department of Natural Resources. All bearings, distances and coordinates are based on Louisiana Coordinate System of 1927, (North or South Zone).

NOTE: The above description of the Tract nominated for lease has been provided and corrected, where required, exclusively by the nomination party. Any mineral lease selected from this Tract and awarded by the Louisiana State Mineral Board shall be without warranty of any kind, either express, implied, or statutory, including, but not limited to, the implied warranties of merchantability and fitness for a particular purpose. Should the mineral lease awarded by the Louisiana State Mineral Board be subsequently modified, cancelled or abrogated due to the existence of conflicting leases, operating agreements, private claims or other future obligations or conditions which may affect all or any portion of the leased Tract, it shall not relieve the Lessee of the obligation to pay any bonus due thereon to the Louisiana State Mineral Board, nor shall the Louisiana State Mineral Board be obligated to refund any consideration paid by the Lessor prior to such modification, cancellation, or abrogation, including, but not limited to, bonuses, rentals and royalties.

NOTE: The Office of Mineral Resources will require a minimum bonus of \$130 per acre and a minimum royalty of 21%.

NOTE: The State of Louisiana does hereby reserve, and this lease shall be subject to, the imprescriptible right of surface use in the nature of a servitude in favor of the Department of Natural Resources, including its Offices and Commissions, for the sole purpose of implementing, constructing, servicing and maintaining approved coastal zone management and/or restoration projects. Utilization of any and all rights derived under this lease by the mineral lessee, its agents, successors or assigns, shall not interfere with nor hinder the reasonable surface use by the

Department of Natural Resources, its Offices or Commissions, as herein above reserved.

Applicant: THEOPHILUS OIL, GAS & LAND SERVICES, LLC

Bidder	Cash Payment	Price/Acre	Rental	Oil	Gas	Other

