

TRACT 38538 - Sabine Parish, Louisiana

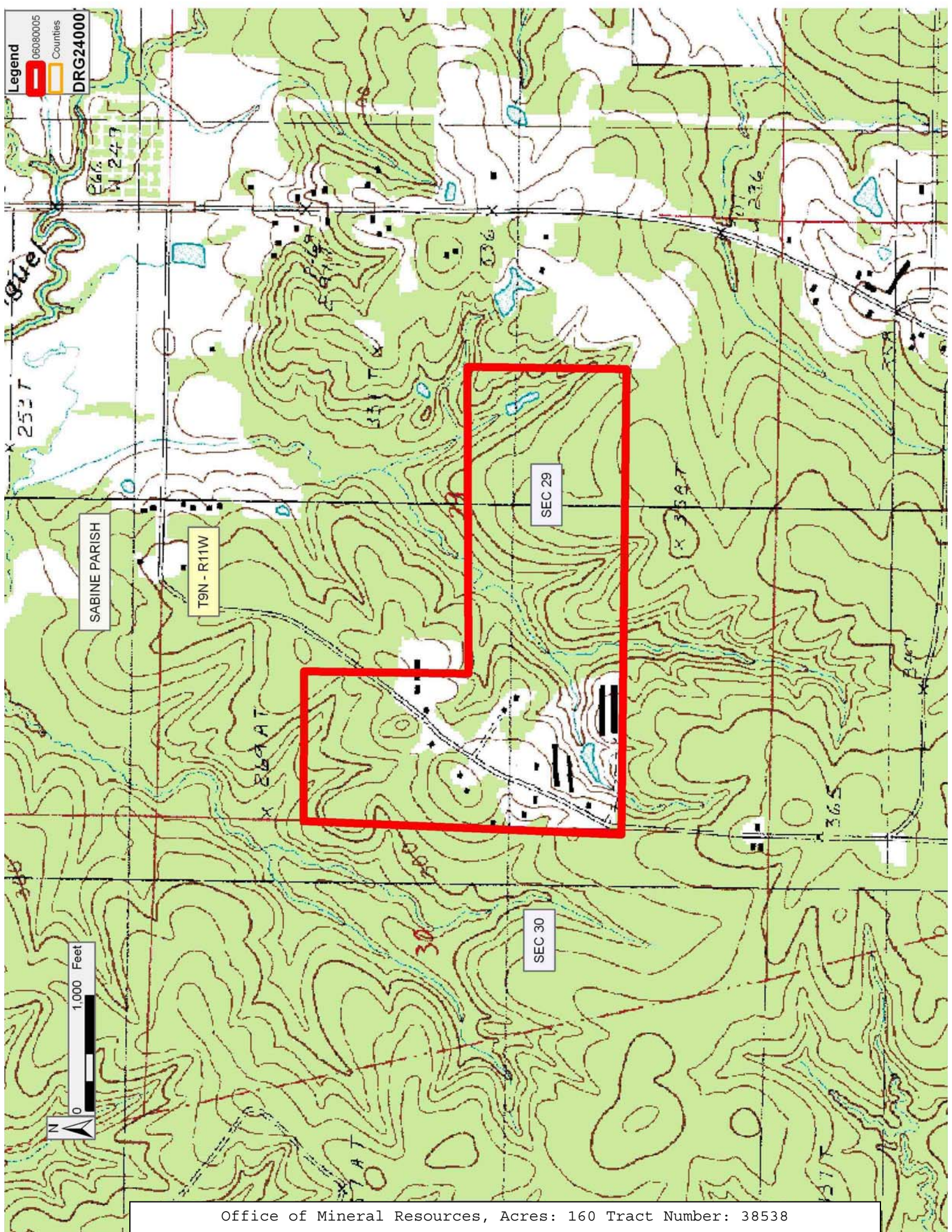
All of the mineral rights only under land adjudicated to and acquired by the State of Louisiana in and through a proper tax sale, and subsequently alienated by the State which retained the mineral rights thereto, and which is not under valid mineral lease from the State of Louisiana on August 9, 2006, situated in Sabine Parish, Louisiana, and being more fully described as follows: The Southwest Quarter of the Northwest Quarter (SW/4 of NW/4), the Northwest Quarter of the Southeast Quarter (NW/4 of SE/4), the Northeast Quarter of the Southwest Quarter (NE/4 of SW/4) and the Northwest Quarter of the Southwest Quarter (NW/4 of SW/4) of Section 29, Township 9 North, Range 11 West, Sabine Parish, Louisiana, being the same lands adjudicated to the State in the name of Bradley Drilling Company for the nonpayment of taxes for the year of 1931, and subsequently sold to W. J. Bullard from the State of Louisiana on August 21, 1944, under Patent No. 13601, containing approximately **160 acres**, all as more particularly outlined on a plat on file in the Office of Mineral Resources, Department of Natural Resources. All bearings, distances and coordinates are based on Louisiana Coordinate System of 1927, (North or South Zone), where applicable.

NOTE: The above description of the Tract nominated for lease has been provided and corrected, where required, exclusively by the nomination party. Any mineral lease selected from this Tract and awarded by the Louisiana State Mineral Board shall be without warranty of any kind, either express, implied, or statutory, including, but not limited to, the implied warranties of merchantability and fitness for a particular purpose. Should the mineral lease awarded by the Louisiana State Mineral Board be subsequently modified, cancelled or abrogated due to the existence of conflicting leases, operating agreements, private claims or other future obligations or conditions which may affect all or any portion of the leased Tract, it shall not relieve the Lessee of the obligation to pay any bonus due thereon to the Louisiana State Mineral Board, nor shall the Louisiana State Mineral Board be obligated to refund any consideration paid by the Lessor prior to such modification, cancellation, or abrogation, including, but not limited to, bonuses, rentals and royalties.

NOTE: The State of Louisiana owns only the mineral rights on this tract; the surface and other rights of ownership have been sold or patented out by the State. Because the surface is not owned by the State, no surface activity on this tract undertaken in conjunction with any operations under any mineral lease given on this tract will be allowed without prior approval of the surface owner and further, no such right of surface use shall be deemed to have been given as part of any mineral lease by the State of Louisiana on this tract.

Bidder	Cash Payment	Price/Acre	Rental	Oil	Gas	Other

Applicant: AUDUBON OIL AND GAS CORPORATION



Legend
06080005 Counties
DRG24000

SABINE PARISH

T9N - R11W

SEC 29

SEC 30



TRACT 38539 - Sabine Parish, Louisiana

All of the mineral rights only under land adjudicated to and acquired by the State of Louisiana in and through a proper tax sale, and subsequently alienated by the State which retained the mineral rights thereto, and which is not under valid mineral lease from the State of Louisiana on August 9, 2006, situated in Sabine Parish, Louisiana, and being more fully described as follows: An undivided 7/16ths interest in the Southeast Quarter of the Northwest Quarter (SE/4 of NW/4) and the Northeast Quarter of the Southwest Quarter (NE/4 of SW/4) of Section 34, Township 9 North, Range 11 West, Sabine Parish, Louisiana, being a portion of the same lands adjudicated to the State in the name of J. P. Edmondson, et al for nonpayment of taxes for the year of 1932, and subsequently sold to G. R. Pierce by Sheriff's Sale on December 11, 1937 and recorded as File No. 85934 of Conveyance Book 81, records of Sabine Parish; containing approximately 78.9 gross acres and containing approximately **34.5 net acres**, all as more particularly outlined on a plat on file in the Office of Mineral Resources, Department of Natural Resources. All bearings, distances and coordinates are based on Louisiana Coordinate System of 1927, (North or South Zone), where applicable.

NOTE: The above description of the Tract nominated for lease has been provided and corrected, where required, exclusively by the nomination party. Any mineral lease selected from this Tract and awarded by the Louisiana State Mineral Board shall be without warranty of any kind, either express, implied, or statutory, including, but not limited to, the implied warranties of merchantability and fitness for a particular purpose. Should the mineral lease awarded by the Louisiana State Mineral Board be subsequently modified, cancelled or abrogated due to the existence of conflicting leases, operating agreements, private claims or other future obligations or conditions which may affect all or any portion of the leased Tract, it shall not relieve the Lessee of the obligation to pay any bonus due thereon to the Louisiana State Mineral Board, nor shall the Louisiana State Mineral Board be obligated to refund any consideration paid by the Lessor prior to such modification, cancellation, or abrogation, including, but not limited to, bonuses, rentals and royalties.

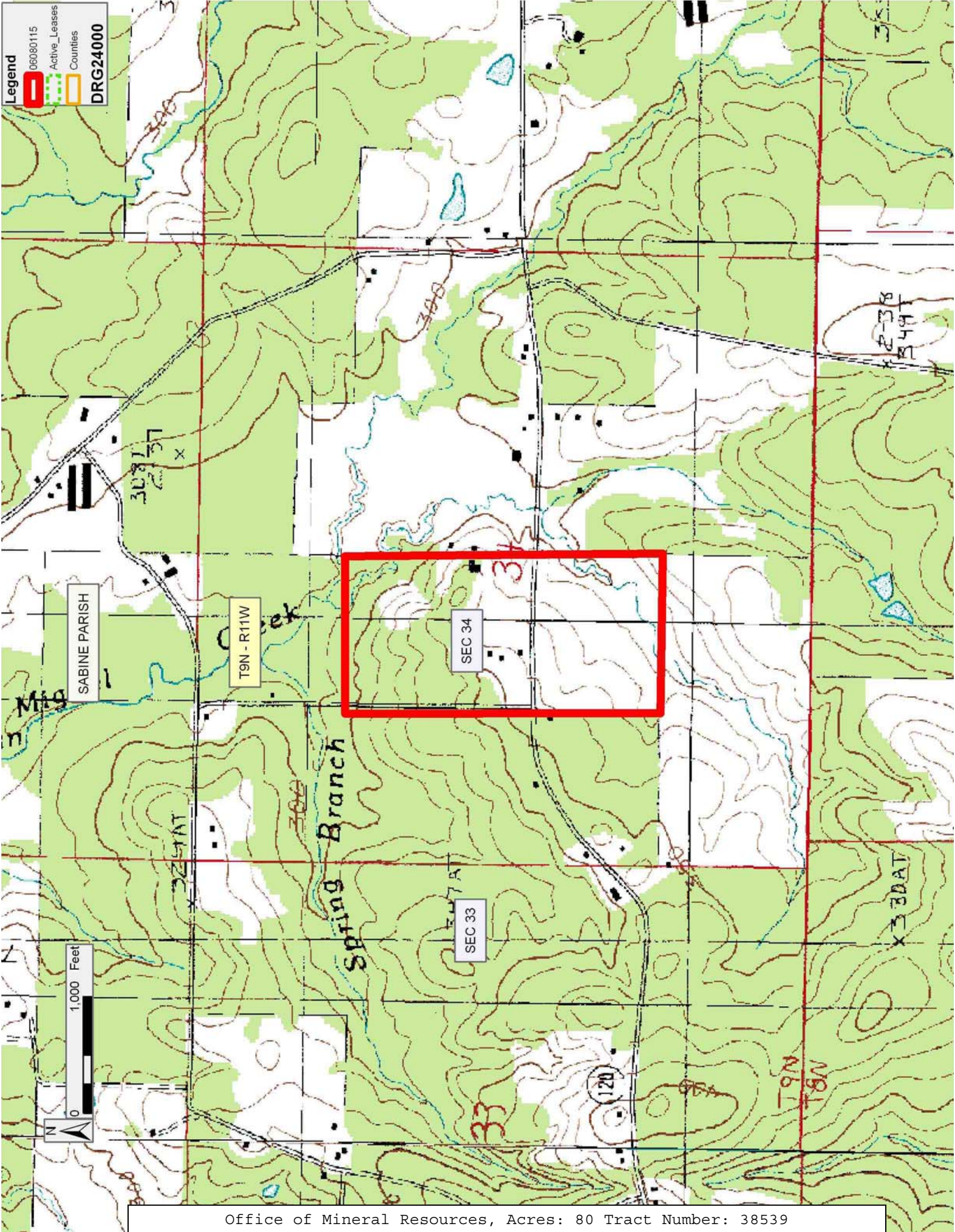
NOTE: The State of Louisiana owns only the mineral rights on this tract; the surface and other rights of ownership have been sold or patented out by the State. Because the surface is not owned by the State, no surface activity on this tract undertaken in conjunction with any operations under any mineral lease given on this tract will be allowed without prior approval of the surface owner and further, no such right of surface use shall be deemed to have been given as part of any mineral lease by the State of Louisiana on this tract.

Applicant: MCGINTY-DURHAM, INC.

Bidder	Cash Payment	Price/Acre	Rental	Oil	Gas	Other

Legend

- 06080115
- Active_Leases
- Counties
- DRG24000



TRACT 38540 - Natchitoches and Sabine Parishes, Louisiana

All of the mineral rights only under land adjudicated to and acquired by the State of Louisiana in and through a proper tax sale, and subsequently alienated by the State which retained the mineral rights thereto, and which is not under valid mineral lease from the State of Louisiana on August 9, 2006, situated in Natchitoches and Sabine Parishes, Louisiana, and being more fully described as follows: The Northwest Quarter of the Northwest Quarter (NW/4 of NW/4) and the North One Fifth of the Southwest Quarter of the Northwest Quarter (N 1/5 of SW/4 of NW/4) of Section 6, Township 8 North, Range 10 West, Sabine Parish, Louisiana, being the same lands adjudicated to the State in the name of Mrs. Jane Kirkpatrick for the nonpayment of taxes for the year 1932, and subsequently sold to James J. Cobbs, under File No. 175605, containing approximately **48 acres**, all as more particularly outlined on a plat on file in the Office of Mineral Resources, Department of Natural Resources. All bearings, distances and coordinates are based on Louisiana Coordinate System of 1927, (North or South Zone), where applicable.

NOTE: The above description of the Tract nominated for lease has been provided and corrected, where required, exclusively by the nomination party. Any mineral lease selected from this Tract and awarded by the Louisiana State Mineral Board shall be without warranty of any kind, either express, implied, or statutory, including, but not limited to, the implied warranties of merchantability and fitness for a particular purpose. Should the mineral lease awarded by the Louisiana State Mineral Board be subsequently modified, cancelled or abrogated due to the existence of conflicting leases, operating agreements, private claims or other future obligations or conditions which may affect all or any portion of the leased Tract, it shall not relieve the Lessee of the obligation to pay any bonus due thereon to the Louisiana State Mineral Board, nor shall the Louisiana State Mineral Board be obligated to refund any consideration paid by the Lessor prior to such modification, cancellation, or abrogation, including, but not limited to, bonuses, rentals and royalties.

NOTE: The State of Louisiana owns only the mineral rights on this tract; the surface and other rights of ownership have been sold or patented out by the State. Because the surface is not owned by the State, no surface activity on this tract undertaken in conjunction with any operations under any mineral lease given on this tract will be allowed without prior approval of the surface owner and further, no such right of surface use shall be deemed to have been given as part of any mineral lease by the State of Louisiana on this tract.

Applicant: AUDUBON OIL AND GAS CORPORATION

Bidder	Cash Payment	Price/Acre	Rental	Oil	Gas	Other

