

**TRACT 38524 - Portion of Blocks 46, and 51, Breton Sound Area, Plaquemines Parish, Louisiana**

All of the lands now or formerly constituting the beds and bottoms of all water bodies of every nature and description the title of which vests in the State of Louisiana, together with all islands arising therein and other lands formed by accretion or by reliction, where allowed by law, excepting tax adjudicated lands, and not presently under mineral lease and cross hatched on August 9, 2006, situated in Plaquemines Parish, Louisiana, and more particularly described as follows: Beginning at a point on the West line of Block 46, Breton Sound Area, having Coordinates of X = 2,664,850.00 and Y = 300,205.00; thence East 7,375.00 feet to a point having Coordinates of X = 2,672,225.00 and Y = 300,205.00; thence South 7,375.00 feet to a point on the South line of said Block 46 having Coordinates of X = 2,672,225.00 and Y = 292,830.00; thence South 4,894.65 feet to a point on the boundary of State Lease No. 16890 having Coordinates of X = 2,672,225.00 and Y = 287,935.35; thence along the boundary of said State Lease No. 16890 the following courses: South 73 degrees 14 minutes 30 seconds West 1,717.96 feet and South 05 degrees 15 minutes 21 seconds East 1,993.38 feet to a point on the boundary of said State Lease No. 16890 having Coordinates of X = 2,670,762.60 and Y = 285,455.00; thence West 5,912.60 feet to a point on the West line of Block 51, Breton Sound Area having Coordinates of X = 2,664,850.00 and Y = 285,455.00; thence North 14,750.00 feet along the West lines of said Block 46 and said Block 51 to the point of beginning, containing approximately **2,417.12 acres**, all as more particularly outlined on a plat on file in the Office of Mineral Resources, Department of Natural Resources. All bearings, distances and coordinates are based on Louisiana Coordinate System of 1927, (North or South Zone), where applicable.

NOTE: The above description of the Tract nominated for lease has been provided and corrected, where required, exclusively by the nomination party. Any mineral lease selected from this Tract and awarded by the Louisiana State Mineral Board shall be without warranty of any kind, either express, implied, or statutory, including, but not limited to, the implied warranties of merchantability and fitness for a particular purpose. Should the mineral lease awarded by the Louisiana State Mineral Board be subsequently modified, cancelled or abrogated due to the existence of conflicting leases, operating agreements, private claims or other future obligations or conditions which may affect all or any portion of the leased Tract, it shall not relieve the Lessee of the obligation to pay any bonus due thereon to the Louisiana State Mineral Board, nor shall the Louisiana State Mineral Board be obligated to refund any consideration paid by the Lessor prior to such modification, cancellation, or abrogation, including, but not limited to, bonuses, rentals and royalties.

NOTE: The State of Louisiana does hereby reserve, and this lease shall be subject to, the imprescriptible right of surface use in the nature of a servitude in favor of the Department of Natural Resources, including its Offices and Commissions, for the sole purpose of implementing,

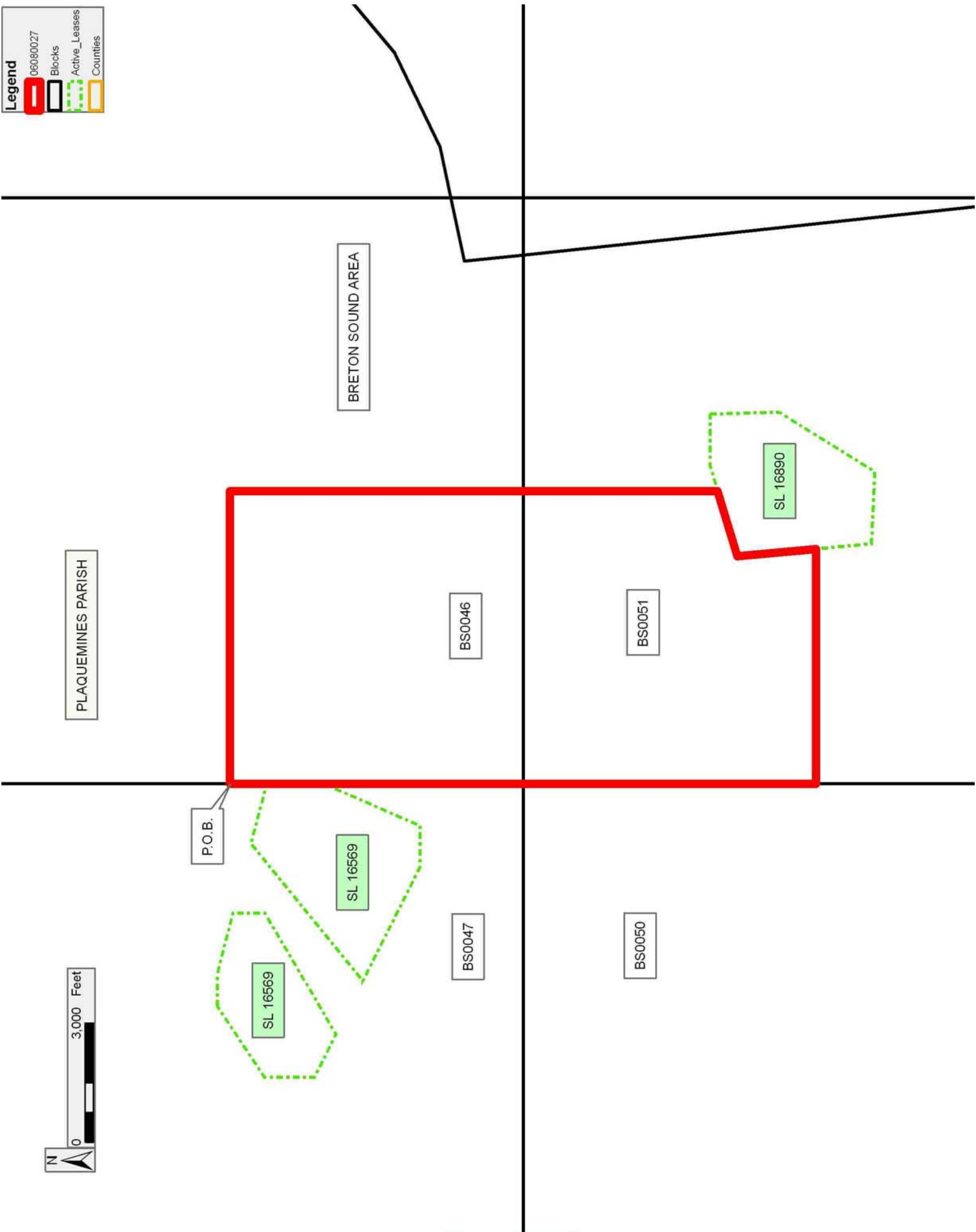
constructing, servicing and maintaining approved coastal zone management and/or restoration projects. Utilization of any and all rights derived under this lease by the mineral lessee, its agents, successors or assigns, shall not interfere with nor hinder the reasonable surface use by the Department of Natural Resources, its Offices or Commissions, as herein above reserved.

Applicant: BONURA ENERGY INVESTMENTS

Bidder	Cash Payment	Price/Acre	Rental	Oil	Gas	Other

**Legend**

-  06080027
-  Blocks
-  Active\_Leases
-  Counties



**TRACT 38525 - Portion of Blocks 51, and 52, Breton Sound Area, Plaquemines Parish, Louisiana**

All of the lands now or formerly constituting the beds and bottoms of all water bodies of every nature and description the title of which vests in the State of Louisiana, together with all islands arising therein and other lands formed by accretion or by reliction, where allowed by law, excepting tax adjudicated lands, and not presently under mineral lease and cross hatched on August 9, 2006, situated in Plaquemines Parish, Louisiana, and more particularly described as follows: Beginning at a point on the North line of Block 51, Breton Sound Area, having Coordinates of X = 2,672,225.00 and Y = 292,830.00; thence East 5,941.42 feet along the North line of said Block 51 to a point having Coordinates of X = 2,678,166.42 and Y = 292,830.00; thence Southeasterly along a straight line to the Northeast corner of State Lease No. 18577 having Coordinates of X = 2,678,270.74 and Y = 291,853.93; thence along the boundary of said State Lease No. 18577 the following courses: South 75 degrees 44 minutes 16 seconds West 1,412.27 feet, South 3,977.00 feet and South 88 degrees 44 minutes 25 seconds East 1,835.71 feet to its Southeast corner having Coordinates of X = 2,678,737.27 and Y = 287,488.64; thence Southeasterly on a straight line to a point on the South line of Block 52, Breton Sound Area having Coordinates of X = 2,679,742.80 and Y = 278,080.00; thence West 142.80 feet along the South line of said Block 52 to its Southwest corner, also being the Southeast corner of Block 51, Breton Sound Area, and the Southeast corner of State Lease No. 17244 having Coordinates of X = 2,679,600.00 and Y = 278,080.00; thence along the boundary of said State Lease No. 17244 the following courses: North 33 degrees 05 minutes 49 seconds West 1,607.88 feet, West 2,053.00 feet and South 1,347.00 feet to its Southwest corner and a point on the South line of said Block 51 having Coordinates of X = 2,676,669.00 and Y = 278,080.00; thence West 4,444.00 feet along the South line of said Block 51 to a point having Coordinates of X = 2,672,225.00 and Y = 278,080.00; thence North 5,931.32 feet to a point on the South line of State Lease No. 16890 having Coordinates of X = 2,672,225.00 and Y = 284,011.32; thence along the boundary of said State Lease No. 16890 the following courses: South 87 degrees 28 minutes 59 seconds East 485.47 feet and North 31 degrees 53 minutes 55 seconds East 1,725.59 feet to a point on its East line, also being the Southwest corner of State Lease No. 17243 having Coordinates of X = 2,673,621.83 and Y = 285,455.00; thence along the boundary of said State Lease No. 17243 the following courses: East 1,664.49 feet, North 39 degrees 23 minutes 05 seconds East 782.76 feet, North 1,332.00 feet and West 1,601.14 feet to its Northwest corner, also being a point on the boundary of said State Lease No. 16890 having Coordinates of X = 2,674,181.86 and Y = 287,392.00; thence along the boundary of said State Lease No. 16890 the following courses: North 01 degrees 37 minutes 30 seconds West 738.30 feet, West 1,289.52 feet and South 73 degrees 14 minutes 30 seconds West 675.07 feet to a point on its boundary having Coordinates of X = 2,672,225.00 and Y = 287,935.35; thence North 4,894.65 feet to the point of beginning, containing approximately **1,829.63 acres**, all as more particularly outlined on a plat on file in the Office of Mineral Resources, Department of

Natural Resources. All bearings, distances and coordinates are based on Louisiana Coordinate System of 1927, (North or South Zone), where applicable.

NOTE: The above description of the Tract nominated for lease has been provided and corrected, where required, exclusively by the nomination party. Any mineral lease selected from this Tract and awarded by the Louisiana State Mineral Board shall be without warranty of any kind, either express, implied, or statutory, including, but not limited to, the implied warranties of merchantability and fitness for a particular purpose. Should the mineral lease awarded by the Louisiana State Mineral Board be subsequently modified, cancelled or abrogated due to the existence of conflicting leases, operating agreements, private claims or other future obligations or conditions which may affect all or any portion of the leased Tract, it shall not relieve the Lessee of the obligation to pay any bonus due thereon to the Louisiana State Mineral Board, nor shall the Louisiana State Mineral Board be obligated to refund any consideration paid by the Lessor prior to such modification, cancellation, or abrogation, including, but not limited to, bonuses, rentals and royalties.

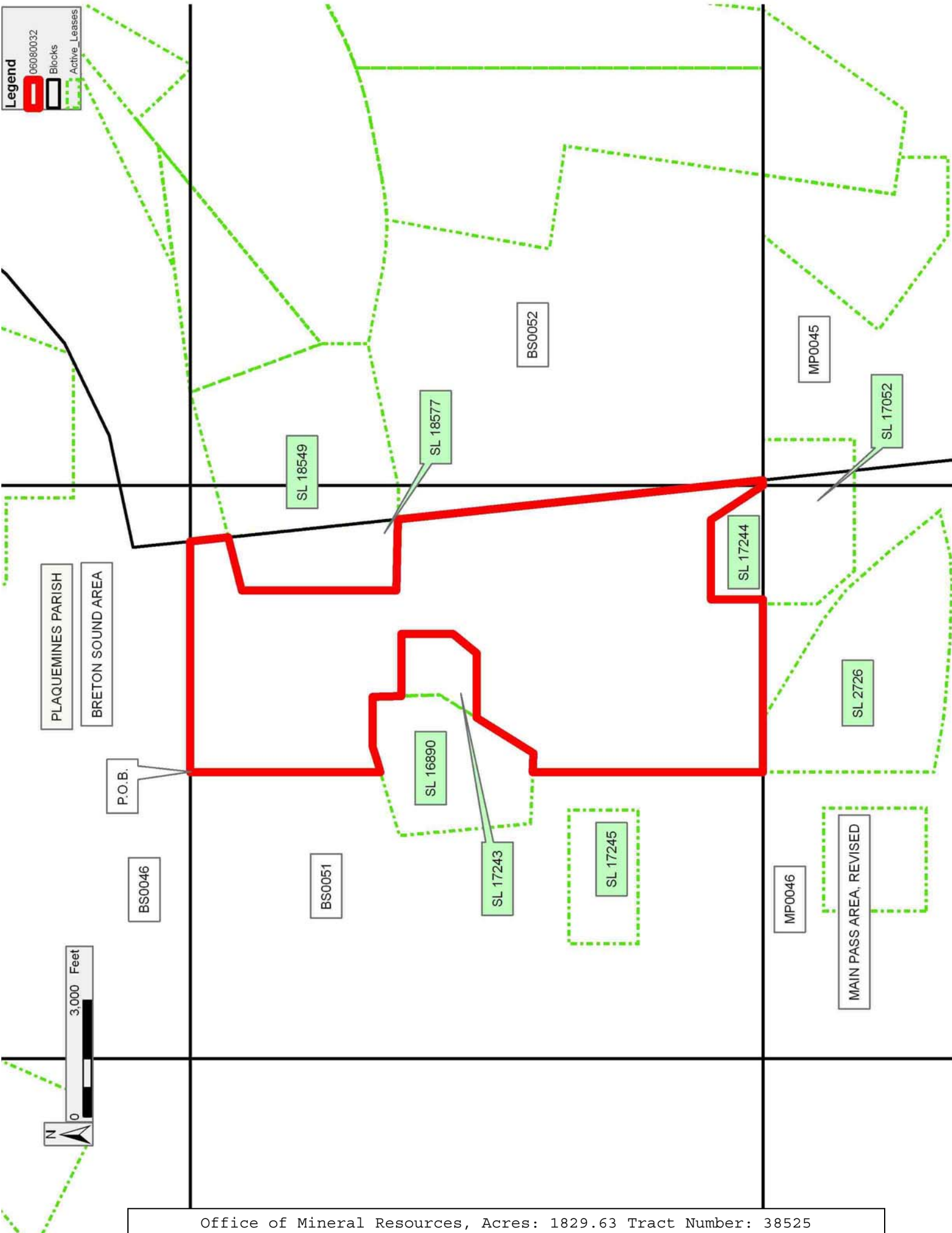
NOTE: The State of Louisiana does hereby reserve, and this lease shall be subject to, the imprescriptible right of surface use in the nature of a servitude in favor of the Department of Natural Resources, including its Offices and Commissions, for the sole purpose of implementing, constructing, servicing and maintaining approved coastal zone management and/or restoration projects. Utilization of any and all rights derived under this lease by the mineral lessee, its agents, successors or assigns, shall not interfere with nor hinder the reasonable surface use by the Department of Natural Resources, its Offices or Commissions, as herein above reserved.

Applicant: BONURA ENERGY INVESTMENTS

Bidder	Cash Payment	Price/Acre	Rental	Oil	Gas	Other

**Legend**

- 06080032
- Blocks
- Active\_Leases



**TRACT 38526 - Portion of Block 46, Main Pass Area, Revised, Plaquemines Parish, Louisiana**

All of the lands now or formerly constituting the beds and bottoms of all water bodies of every nature and description the title of which vests in the State of Louisiana, together with all islands arising therein and other lands formed by accretion or by reliction, where allowed by law, excepting tax adjudicated lands, and not presently under mineral lease and cross hatched on August 9, 2006, situated in Plaquemines Parish, Louisiana, and more particularly described as follows: Beginning at the Southwest corner of Block 46, Main Pass Area, Revised, having Coordinates of X = 2,664,850.00 and Y = 263,330.00; thence North 2,750.00 feet along the West line of said Block 46 to the Southwest corner of State Lease No. 16847 having Coordinates of X = 2,664,850.00 and Y = 266,080.00; thence along the boundary of said State Lease No. 16847 the following courses: North 47 degrees 02 minutes 27 seconds East 8,395.29 feet to a point having Coordinates of X = 2,670,994.00 and Y = 271,801.20; South 52 degrees 35 minutes 09 seconds East 1,549.86 feet to a point having Coordinates of X = 2,672,225.00 and Y = 270,859.55; and North 2,020.45 feet to a point having Coordinates of X = 2,672,225.00 and Y = 272,880.00; thence East 7,375.00 feet to a point on the East line of said Block 46 having Coordinates of X = 2,679,600.00 and Y = 272,880.00; thence South 3,020.26 feet along the East line of said Block 46 to the most Easterly Northeast corner of State Lease No. 2726, as amended, having Coordinates of X = 2,679,600.00 and Y = 269,859.74; thence along the boundary of said State Lease No. 2726, as amended, the following courses: North 61 degrees 10 minutes 21 seconds West 123.88 feet to a point having Coordinates of X = 2,679,491.47 and Y = 269,919.47; North 53 degrees 03 minutes 02 seconds West 706.99 feet to a point having Coordinates of X = 2,678,926.47 and Y = 270,344.45; North 65 degrees 45 minutes 02 seconds West 498.99 feet to a point having Coordinates of X = 2,678,471.51 and Y = 270,549.39; North 57 degrees 32 minutes 02 seconds West 651.99 feet to a point having Coordinates of X = 2,677,921.41 and Y = 270,899.38; North 69 degrees 44 minutes 02 seconds West 346.00 feet to a point having Coordinates of X = 2,677,596.84 and Y = 271,019.23; North 61 degrees 23 minutes 03 seconds West 251.00 feet to a point having Coordinates of X = 2,677,376.50 and Y = 271,139.44; North 53 degrees 28 minutes 02 seconds West 336.00 feet to a point having Coordinates of X = 2,677,106.51 and Y = 271,339.45; North 64 degrees 00 minutes 02 seconds West 228.00 feet to a point having Coordinates of X = 2,676,901.59 and Y = 271,439.40; North 81 degrees 52 minutes 03 seconds West 212.00 feet to a point having Coordinates of X = 2,676,691.72 and Y = 271,469.39; North 64 degrees 39 minutes 02 seconds West 210.00 feet to a point having Coordinates of X = 2,676,501.94 and Y = 271,559.30; North 39 degrees 48 minutes 01 seconds West 273.00 feet to a point having Coordinates of X = 2,676,327.19 and Y = 271,769.04; North 58 degrees 31 minutes 01 seconds West 287.00 feet to a point having Coordinates of X = 2,676,082.44 and Y = 271,918.92; North 46 degrees 44 minutes 01 seconds West 233.00 feet to a point having Coordinates of X = 2,675,912.77 and Y = 272,078.62; North 18 degrees 39 minutes 00 seconds West 421.99 feet to a point having Coordinates of X = 2,675,777.82 and Y =

272,478.45; North 45 degrees 30 minutes 01 seconds West 399.99 feet to a point having Coordinates of X = 2,675,492.53 and Y = 272,758.81; South 40 degrees 25 minutes 57 seconds West 709.00 feet to a point having Coordinates of X = 2,675,032.71 and Y = 272,219.14; South 44 degrees 59 minutes 57 seconds West 523.00 feet to a point having Coordinates of X = 2,674,662.90 and Y = 271,849.31; South 50 degrees 03 minutes 57 seconds West 600.00 feet to a point having Coordinates of X = 2,674,202.83 and Y = 271,464.17; South 53 degrees 29 minutes 57 seconds West 1,841.01 feet to a point having Coordinates of X = 2,672,722.93 and Y = 270,369.07; South 43 degrees 44 minutes 57 seconds West 969.01 feet to a point having Coordinates of X = 2,672,052.86 and Y = 269,669.09; South 39 degrees 47 minutes 57 seconds West 547.00 feet to a point having Coordinates of X = 2,671,702.73 and Y = 269,248.83; South 31 degrees 30 minutes 57 seconds West 1,602.01 feet to a point having Coordinates of X = 2,670,865.30 and Y = 267,883.12; South 30 degrees 20 minutes 57 seconds West 475.00 feet to a point having Coordinates of X = 2,670,625.30 and Y = 267,473.22; North 81 degrees 58 minutes 03 seconds East 788.00 feet to a point having Coordinates of X = 2,671,405.57 and Y = 267,583.33; South 89 degrees 59 minutes 57 seconds East 370.00 feet to a point having Coordinates of X = 2,671,775.56 and Y = 267,583.32; South 81 degrees 01 minutes 57 seconds East 385.00 feet to a point having Coordinates of X = 2,672,155.86 and Y = 267,523.31; South 63 degrees 25 minutes 58 seconds East 380.00 feet to a point having Coordinates of X = 2,672,495.74 and Y = 267,353.36; South 46 degrees 11 minutes 00 seconds East 513.01 feet to a point having Coordinates of X = 2,672,865.90 and Y = 266,998.17; and South 37 degrees 56 minutes 59 seconds East 589.01 feet to the most Northerly Northeast corner of State Lease No. 16663, as amended, having Coordinates of X = 2,673,228.13 and Y = 266,533.70; thence South 74 degrees 56 minutes 32 seconds West 1,038.80 feet along the North line of said State Lease No. 16663, as amended, to its Southwest corner, said corner also being the Northeast corner of State Lease No. 16662, as amended, having Coordinates of X = 2,672,225.00 and Y = 266,263.83; thence along the boundary of said State Lease No. 16662, as amended, the following courses: South 74 degrees 56 minutes 32 seconds West 4,027.80 feet to a point having Coordinates of X = 2,668,335.50 and Y = 265,217.44 and South 15 degrees 03 minutes 27 seconds East 900.43 feet to its Southwest corner, said corner also being the Northwest corner of State Lease No. 16661, as amended, having Coordinates of X = 2,668,569.42 and Y = 264,347.93; thence South 15 degrees 03 minutes 29 seconds East 1,054.13 feet along the West line of said State Lease No. 16661, as amended, to its Southwest corner, said corner also being a point on the South line of said Block 46, having Coordinates of X = 2,668,843.28 and Y = 263,330.00; thence West 3,993.28 feet along the South line of said Block 46 to the point of beginning, containing approximately **1,074.21 acres**, all as more particularly outlined on a plat on file in the Office of Mineral Resources, Department of Natural Resources. All bearings, distances and coordinates are based on Louisiana Coordinate System of 1927, (North or South Zone), where applicable.







NOTE: The above description of the Tract nominated for lease has been provided and corrected, where required, exclusively by the nomination party. Any mineral lease selected from this Tract and awarded by the Louisiana State Mineral Board shall be without warranty of any kind, either express, implied, or statutory, including, but not limited to, the implied warranties of merchantability and fitness for a particular purpose. Should the mineral lease awarded by the Louisiana State Mineral Board be subsequently modified, cancelled or abrogated due to the existence of conflicting leases, operating agreements, private claims or other future obligations or conditions which may affect all or any portion of the leased Tract, it shall not relieve the Lessee of the obligation to pay any bonus due thereon to the Louisiana State Mineral Board, nor shall the Louisiana State Mineral Board be obligated to refund any consideration paid by the Lessor prior to such modification, cancellation, or abrogation, including, but not limited to, bonuses, rentals and royalties.

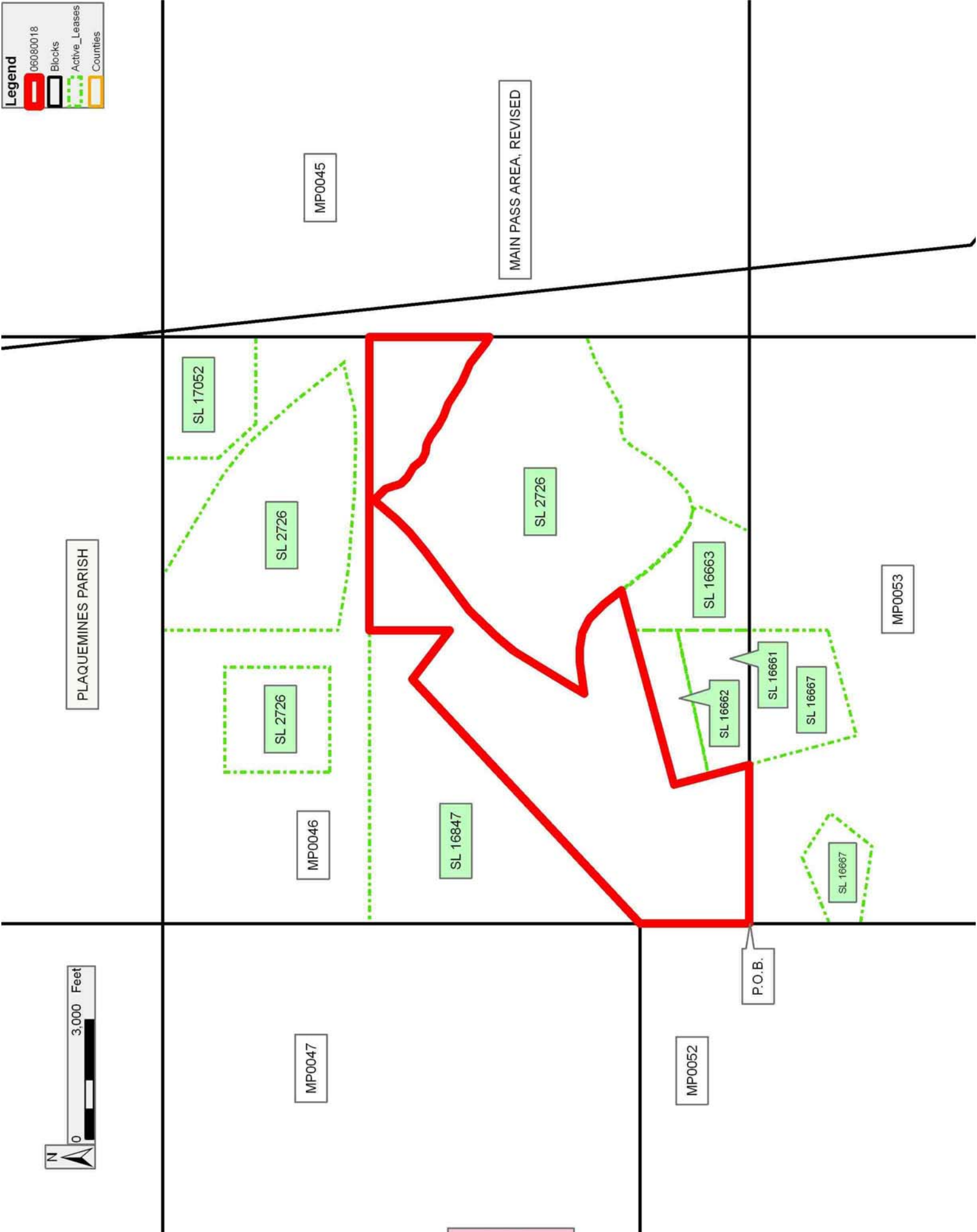
NOTE: The State of Louisiana does hereby reserve, and this lease shall be subject to, the imprescriptible right of surface use in the nature of a servitude in favor of the Department of Natural Resources, including its Offices and Commissions, for the sole purpose of implementing, constructing, servicing and maintaining approved coastal zone management and/or restoration projects. Utilization of any and all rights derived under this lease by the mineral lessee, its agents, successors or assigns, shall not interfere with nor hinder the reasonable surface use by the Department of Natural Resources, its Offices or Commissions, as herein above reserved.

Applicant: NEWLAND PROPERTY GROUP

Bidder	Cash Payment	Price/Acre	Rental	Oil	Gas	Other

**Legend**

-  06080018
-  Blocks
-  Active\_Leases
-  Counties



**TRACT 38527 - Portion of Block 46, Main Pass Area, Revised, Plaquemines Parish, Louisiana**

All of the lands now or formerly constituting the beds and bottoms of all water bodies of every nature and description the title of which vests in the State of Louisiana, together with all islands arising therein and other lands formed by accretion or by reliction, where allowed by law, excepting tax adjudicated lands, and not presently under mineral lease and cross hatched on August 9, 2006, situated in Plaquemines Parish, Louisiana, and more particularly described as follows: Beginning at a the Southeast corner of Block 46, Main Pass Area, Revised, having Coordinates of X = 2,679,600.00 and Y = 263,330.00; thence West 4,903.66 feet along the South line of said Block 46 to the Southeast corner of State Lease No. 16663, as amended, having Coordinates of X = 2,674,696.34 and Y = 263,330.00; thence along the boundary of said State Lease No. 16663, as amended, the following courses: North 27 degrees 02 minutes 48 seconds East 1,373.74 feet to a point having Coordinates of X = 2,675,321.00 and Y = 264,553.50 and North 10 degrees 38 minutes 41 seconds West 193.58 feet to a point on the Southern boundary of State Lease No. 2726, as amended, having Coordinates of X = 2,675,285.24 and Y = 264,743.75; thence along the boundary of said State Lease No. 2726, as amended, the following courses: North 74 degrees 03 minutes 03 seconds East 400.00 feet to a point having Coordinates of X = 2,675,669.85 and Y = 264,853.66; North 48 degrees 31 minutes 03 seconds East 461.00 feet to a point having Coordinates of X = 2,676,015.21 and Y = 265,159.02; North 42 degrees 29 minutes 03 seconds East 563.00 feet to a point having Coordinates of X = 2,676,395.45 and Y = 265,574.22; North 32 degrees 46 minutes 03 seconds East 867.99 feet to a point having Coordinates of X = 2,676,865.23 and Y = 266,304.09; North 45 degrees 00 minutes 04 seconds East 240.00 feet to a point having Coordinates of X = 2,677,034.94 and Y = 266,473.79; North 72 degrees 54 minutes 03 seconds East 272.00 feet to a point having Coordinates of X = 2,677,294.92 and Y = 266,553.76; South 83 degrees 00 minutes 57 seconds East 247.00 feet to a point having Coordinates of X = 2,677,540.09 and Y = 266,523.73; North 83 degrees 11 minutes 03 seconds East 337.00 feet to a point having Coordinates of X = 2,677,874.70 and Y = 266,563.72; North 60 degrees 15 minutes 03 seconds East 403.00 feet to a point having Coordinates of X = 2,678,224.59 and Y = 266,763.69; North 61 degrees 23 minutes 03 seconds East 877.00 feet to a point having Coordinates of X = 2,678,994.47 and Y = 267,183.72; and North 68 degrees 41 minutes 03 seconds East 650.00 feet to a point on the East line of said Block 46 having Coordinates of X = 2,679,600.00 and Y = 267,420.00; thence South 4,090.00 feet along the East line of said Block 46 to the point of beginning, containing approximately **299.92 acres**, all as more particularly outlined on a plat on file in the Office of Mineral Resources, Department of Natural Resources. All bearings, distances and coordinates are based on Louisiana Coordinate System of 1927, (North or South Zone), where applicable.

NOTE: The above description of the Tract nominated for lease has been provided and corrected, where required, exclusively by the nomination





party. Any mineral lease selected from this Tract and awarded by the Louisiana State Mineral Board shall be without warranty of any kind, either express, implied, or statutory, including, but not limited to, the implied warranties of merchantability and fitness for a particular purpose. Should the mineral lease awarded by the Louisiana State Mineral Board be subsequently modified, cancelled or abrogated due to the existence of conflicting leases, operating agreements, private claims or other future obligations or conditions which may affect all or any portion of the leased Tract, it shall not relieve the Lessee of the obligation to pay any bonus due thereon to the Louisiana State Mineral Board, nor shall the Louisiana State Mineral Board be obligated to refund any consideration paid by the Lessor prior to such modification, cancellation, or abrogation, including, but not limited to, bonuses, rentals and royalties.

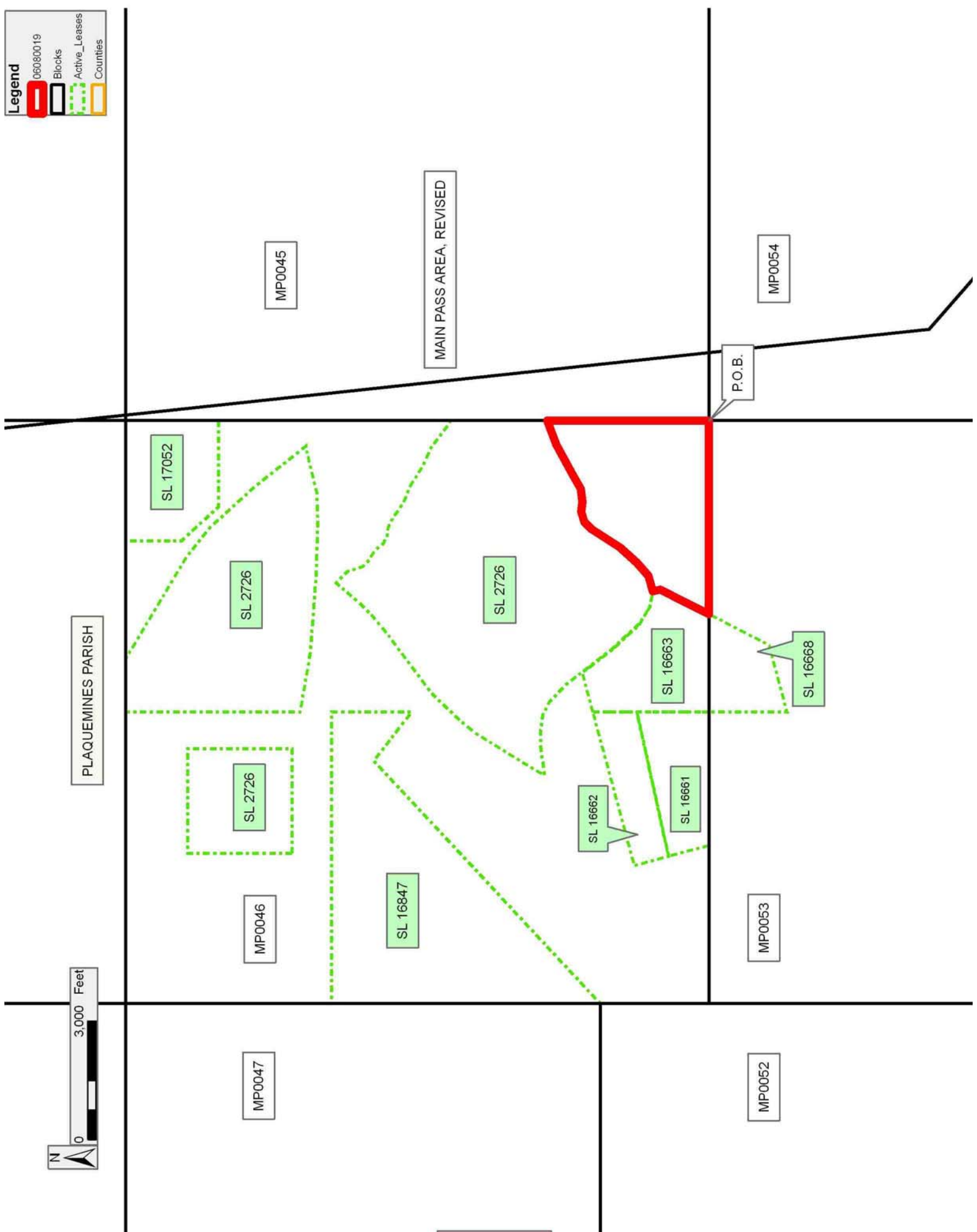
NOTE: The State of Louisiana does hereby reserve, and this lease shall be subject to, the imprescriptible right of surface use in the nature of a servitude in favor of the Department of Natural Resources, including its Offices and Commissions, for the sole purpose of implementing, constructing, servicing and maintaining approved coastal zone management and/or restoration projects. Utilization of any and all rights derived under this lease by the mineral lessee, its agents, successors or assigns, shall not interfere with nor hinder the reasonable surface use by the Department of Natural Resources, its Offices or Commissions, as herein above reserved.

Applicant: NEWLAND PROPERTY GROUP

Bidder	Cash Payment	Price/Acre	Rental	Oil	Gas	Other

**Legend**

-  06080019
-  Blocks
-  Active\_Leases
-  Counties



**TRACT 38528 - Lafourche Parish, Louisiana**

All of the lands now or formerly constituting the beds and bottoms of all water bodies of every nature and description the title of which vests in the State of Louisiana, together with all islands arising therein and other lands formed by accretion or by reliction, where allowed by law, excepting tax adjudicated lands, and not presently under mineral lease and cross hatched on August 9, 2006, situated in Lafourche Parish, Louisiana, and more particularly described as follows: Beginning at a point having Coordinates of X = 2,392,758.44 and Y = 269,938.77; thence North 88 degrees 08 minutes 41 seconds East approximately 5,332 feet to a point lying on the Western boundary of State Lease No. 1217, as amended; thence Southerly along the West boundary of said State Lease No. 1217 approximately 15,398 feet to its Southwest corner which lies on the Northern boundary of State Lease No. 18846; thence Westerly along the Northern boundary of said State Lease No. 18846 approximately 2,055 feet to a point having Coordinates of X = 2,395,993.06 and Y = 254,714.26; thence North 02 degrees 29 minutes 22 seconds West 7,345.67 feet to a point having a Coordinates of X = 2,395,674.00 and Y = 262,053.00; thence South 88 degrees 27 minutes 04 seconds West 2,681.98 feet to a point having a Coordinates of X = 2,392,993.00 and Y = 261,980.50; thence North 01 degrees 41 minutes 18 seconds West 7,961.73 feet to the point of beginning, **LESS AND EXCEPT** any portion of said State Lease No. 1217 which may lie within the above described tract, containing approximately **12 acres**, all as more particularly outlined on a plat on file in the Office of Mineral Resources, Department of Natural Resources. All bearings, distances and coordinates are based on Louisiana Coordinate System of 1927, (North or South Zone), where applicable.

NOTE: The above description of the Tract nominated for lease has been provided and corrected, where required, exclusively by the nomination party. Any mineral lease selected from this Tract and awarded by the Louisiana State Mineral Board shall be without warranty of any kind, either express, implied, or statutory, including, but not limited to, the implied warranties of merchantability and fitness for a particular purpose. Should the mineral lease awarded by the Louisiana State Mineral Board be subsequently modified, cancelled or abrogated due to the existence of conflicting leases, operating agreements, private claims or other future obligations or conditions which may affect all or any portion of the leased Tract, it shall not relieve the Lessee of the obligation to pay any bonus due thereon to the Louisiana State Mineral Board, nor shall the Louisiana State Mineral Board be obligated to refund any consideration paid by the Lessor prior to such modification, cancellation, or abrogation, including, but not limited to, bonuses, rentals and royalties.

NOTE: The State of Louisiana does hereby reserve, and this lease shall be subject to, the imprescriptible right of surface use in the nature of a servitude in favor of the Department of Natural Resources, including its Offices and Commissions, for the sole purpose of implementing, constructing, servicing and maintaining approved coastal zone management




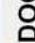
and/or restoration projects. Utilization of any and all rights derived under this lease by the mineral lessee, its agents, successors or assigns, shall not interfere with nor hinder the reasonable surface use by the Department of Natural Resources, its Offices or Commissions, as herein above reserved.

NOTE: The Department of Wildlife and Fisheries has designated certain areas in the coastal waters of the State of Louisiana as Oyster Seed Bed Areas. The exact location of those Seed Bed Areas must be obtained from the Department of Wildlife and Fisheries and any work done under a mineral lease from the State of Louisiana may necessarily be conducted in conformity with the rules and regulations promulgated by the said Department of Wildlife and Fisheries for Oyster Seed Bed Areas.

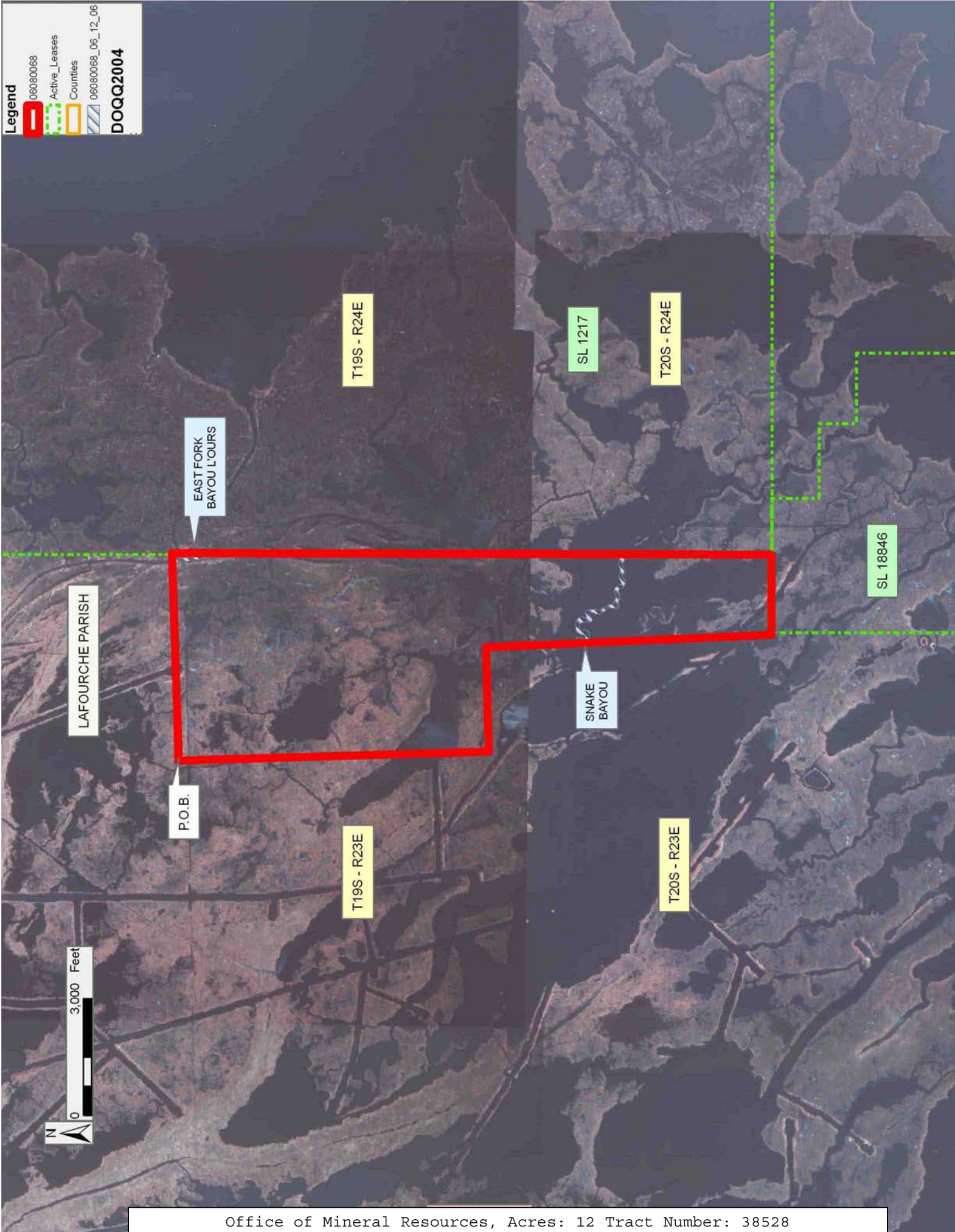
Applicant: LANDSOLUTIONS, INC.

Bidder	Cash Payment	Price/Acre	Rental	Oil	Gas	Other

**Legend**

-  06080068
-  Active\_Leases
-  Counties
-  06080068\_06\_12\_06

**DOQQ2004**





**TRACT 38529 - Portion of Block 53, Main Pass Area, Revised, Plaquemines Parish, Louisiana**

All of the lands now or formerly constituting the beds and bottoms of all water bodies of every nature and description the title of which vests in the State of Louisiana, together with all islands arising therein and other lands formed by accretion or by reliction, where allowed by law, excepting tax adjudicated lands, and not presently under mineral lease and cross hatched on August 9, 2006, situated in Plaquemines Parish, Louisiana, and more particularly described as follows: Beginning at a the Northeast corner of Block 53, Main Pass Area, Revised, having Coordinates of X = 2,679,600.00 and Y = 263,330.00; thence South 5,630.00 feet along the East line of said Block 53 to a point having Coordinates of X = 2,679,600.00 and Y = 257,700.00; thence West 14,750.00 feet to the South corner of State Lease No. 16851 having Coordinates of X = 2,664,850.00 and Y = 257,700.00; thence North 37 degrees 23 minutes 23 seconds East 3,202.13 feet along the East line of said State Lease No. 16851 to its Northeast corner, said corner also being the Southeast corner of the Western portion of State Lease No. 16667, as amended, having Coordinates of X = 2,666,794.44 and Y = 260,244.17; thence along the boundary of said Western portion of State Lease No. 16667, as amended, the following courses: North 38 degrees 10 minutes 43 seconds East 1,341.42 feet to a point having Coordinates of X = 2,667,623.59 and Y = 261,298.64, North 57 degrees 56 minutes 24 seconds West 1,314.69 feet to a point having Coordinates of X = 2,666,509.40 and Y = 261,996.49 and South 67 degrees 39 minutes 40 seconds West 1,794.04 feet to a point on the West line of said Block 53 having Coordinates of X = 2,664,850.00 and Y = 261,314.60; thence North 2,015.40 feet along the West line of said Block 53 to its Northwest corner having Coordinates of X = 2,664,850.00 and Y = 263,330.00; thence East 3,993.28 feet along the North line of said Block 53 to the Northwest corner of the Eastern portion of State Lease No. 16667, as amended, having Coordinates of X = 2,668,843.28 and Y = 263,330.00; thence along the boundary of said Eastern portion of State Lease No. 16667, as amended, the following courses: South 15 degrees 03 minutes 28 seconds East 2,795.44 feet to a point having Coordinates of X = 2,669,569.52 and Y = 260,630.54 and North 74 degrees 56 minutes 32 seconds East 2,749.90 feet to the Southwest corner of State Lease No. 16668 having Coordinates of X = 2,672,225.00 and Y = 261,344.94; thence along the boundary of said State Lease No. 16668 the following courses: North 74 degrees 56 minutes 32 seconds East 1,750.09 feet to a point having Coordinates of X = 2,673,915.00 and Y = 261,799.60 and North 27 degrees 02 minutes 47 seconds East 1,718.32 feet to a point on the North line of said Block 53 having Coordinates of X = 2,674,696.34 and Y = 263,330.00; thence East 4,903.66 feet along the North line of said Block 53 to the point of beginning, containing approximately **1,522.77 acres**, all as more particularly outlined on a plat on file in the Office of Mineral Resources, Department of Natural Resources. All bearings, distances and coordinates are based on Louisiana Coordinate System of 1927, (North or South Zone), where applicable.

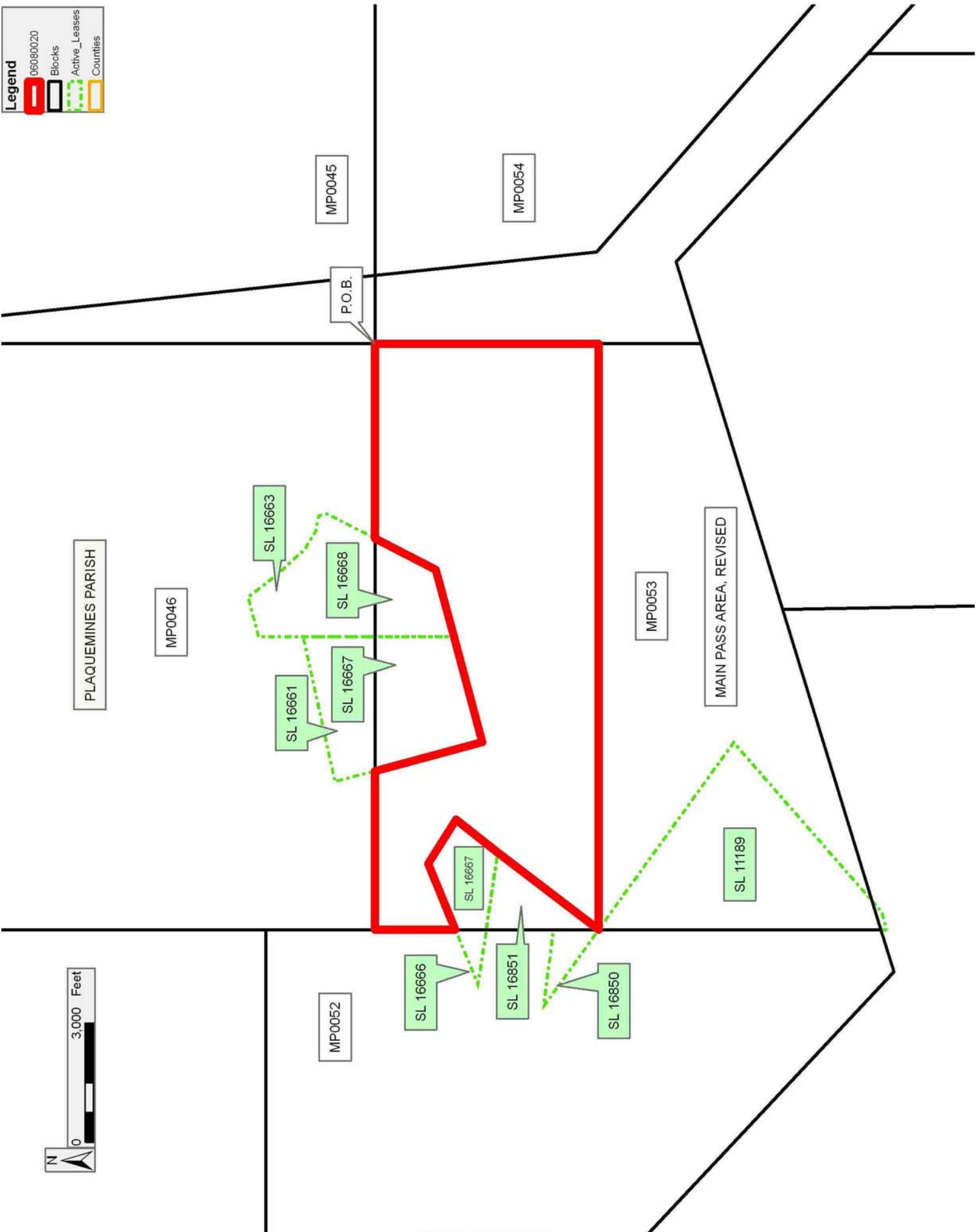
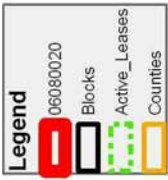
NOTE: The above description of the Tract nominated for lease has been provided and corrected, where required, exclusively by the nomination party. Any mineral lease selected from this Tract and awarded by the Louisiana State Mineral Board shall be without warranty of any kind, either express, implied, or statutory, including, but not limited to, the implied warranties of merchantability and fitness for a particular purpose. Should the mineral lease awarded by the Louisiana State Mineral Board be subsequently modified, cancelled or abrogated due to the existence of conflicting leases, operating agreements, private claims or other future obligations or conditions which may affect all or any portion of the leased Tract, it shall not relieve the Lessee of the obligation to pay any bonus due thereon to the Louisiana State Mineral Board, nor shall the Louisiana State Mineral Board be obligated to refund any consideration paid by the Lessor prior to such modification, cancellation, or abrogation, including, but not limited to, bonuses, rentals and royalties.

NOTE: The State of Louisiana does hereby reserve, and this lease shall be subject to, the imprescriptible right of surface use in the nature of a servitude in favor of the Department of Natural Resources, including its Offices and Commissions, for the sole purpose of implementing, constructing, servicing and maintaining approved coastal zone management and/or restoration projects. Utilization of any and all rights derived under this lease by the mineral lessee, its agents, successors or assigns, shall not interfere with nor hinder the reasonable surface use by the Department of Natural Resources, its Offices or Commissions, as herein above reserved.

NOTE: The Department of Wildlife and Fisheries has designated certain areas in the coastal waters of the State of Louisiana as Oyster Seed Bed Areas. The exact location of those Seed Bed Areas must be obtained from the Department of Wildlife and Fisheries and any work done under a mineral lease from the State of Louisiana may necessarily be conducted in conformity with the rules and regulations promulgated by the said Department of Wildlife and Fisheries for Oyster Seed Bed Areas.

Applicant: EAST BAY LAND & MINERALS

Bidder	Cash Payment	Price/Acre	Rental	Oil	Gas	Other



**TRACT 38530 - Terrebonne Parish, Louisiana**

All of the lands now or formerly constituting the beds and bottoms of all water bodies of every nature and description the title of which vests in the State of Louisiana, together with all islands arising therein and other lands formed by accretion or by reliction, where allowed by law, excepting tax adjudicated lands, and not presently under mineral lease and cross hatched on August 9, 2006, situated in Terrebonne Parish, Louisiana, and more particularly described as follows: Beginning at a point having Coordinates of X = 2,134,307.50 and Y = 267,091.40; thence South 8,149.88 feet to the most Northerly Northeast corner of State Lease No. 17893 having Coordinates of X = 2,134,307.50 and Y = 258,941.52; thence South 88 degrees 15 minutes 40 seconds West 5,925.24 feet along the Northern boundary of said State Lease No. 17893 to a point on the boundary of the Eastern most portion of State Lease No. 12105, as amended, having Coordinates of X = 2,128,384.99 and Y = 258,761.72; thence along the Eastern most portion of said State Lease No. 12105, as amended, the following courses: along an arc to the left having a radius of 1,000.00 feet and a center of X = 2,127,385.22 and Y = 258,783.55 to a point having Coordinates of X = 2,128,027.38 and Y = 259,550.12; along an arc to the left having a radius of 2,250.00 feet and a center of X = 2,126,582.52 and Y = 257,825.34 to a point having Coordinates of X = 2,127,518.52 and Y = 259,871.41; and West 1,142.43 feet to the Southeast corner of Operating Agreement No. 136; thence along the boundary of said Operating Agreement No. 136 the following courses: North 33 degrees 30 minutes 05 seconds East 236.33 feet to a point having Coordinates of X = 2,126,506.53 and Y = 260,068.48 and along an arc to the left having a radius of 1,750.00 feet and a center of X = 2,126,631.40 and Y = 258,322.94 to a point on the boundary of the Eastern most portion of said State Lease No. 12105, as amended, having Coordinates of X = 2,125,816.08 and Y = 259,871.41; thence along the Eastern portion of said State Lease No. 12105, as amended, the following courses: along an arc to the left having a radius of 1,750.00 feet and a center of X = 2,126,631.40 and Y = 258,322.94 to a point having Coordinates of X = 2,125,104.16 and Y = 259,177.35 and along an arc to the left having a radius of 1,250.00 feet and a center of X = 2,126,195.04 and Y = 258,567.05 to a point on the North line of State Lease No. 3475, as amended, having Coordinates of X = 2,124,945.58 and Y = 258,603.62; thence South 89 degrees 08 minutes 28 seconds West 2,391.49 feet along the North line of said State Lease No. 3475, as amended, to a point having Coordinates of X = 2,122,554.36 and Y = 258,567.78; thence North 143.25 feet to the Southwest corner of the Western most portion of said State Lease No. 12105, as amended, having Coordinates of X = 2,122,554.36 and Y = 258,711.03; thence along the boundary of the Western most portion of said State Lease No. 12105, as amended, the following courses: along an arc to the right having a radius of 10,000.00 feet and a center of X = 2,125,528.58 and Y = 249,163.56 to a point having Coordinates of X = 2,123,013.67 and Y = 258,842.16; along an arc to the right having a radius of 14,000.00 feet and a center of X = 2,124,108.11 and Y = 244,885.01 to a point having Coordinates of X = 2,124,120.00 and Y = 258,885.00; along an arc to the left having a radius of 2,500.00 feet and a center of X =

2,121,645.82 and Y = 259,243.39 to a point having Coordinates of X = 2,124,070.53 and Y = 259,852.32; along an arc to the left having a radius of 1,250.00 feet and a center of X = 2,122,858.18 and Y = 259,547.85 to a point having Coordinates of X = 2,124,065.57 and Y = 259,871.41; and West 1,511.21 feet to its Northwest corner having Coordinates of X = 2,122,554.36 and Y = 259,871.41; thence North 7,219.99 feet to a point having Coordinates of X = 2,122,554.36 and Y = 267,091.40; thence East 11,753.14 feet to the point of beginning, containing approximately **131 acres**, all as more particularly outlined on a plat on file in the Office of Mineral Resources, Department of Natural Resources. All bearings, distances and coordinates are based on Louisiana Coordinate System of 1927, (North or South Zone), where applicable.

NOTE: The above description of the Tract nominated for lease has been provided and corrected, where required, exclusively by the nomination party. Any mineral lease selected from this Tract and awarded by the Louisiana State Mineral Board shall be without warranty of any kind, either express, implied, or statutory, including, but not limited to, the implied warranties of merchantability and fitness for a particular purpose. Should the mineral lease awarded by the Louisiana State Mineral Board be subsequently modified, cancelled or abrogated due to the existence of conflicting leases, operating agreements, private claims or other future obligations or conditions which may affect all or any portion of the leased Tract, it shall not relieve the Lessee of the obligation to pay any bonus due thereon to the Louisiana State Mineral Board, nor shall the Louisiana State Mineral Board be obligated to refund any consideration paid by the Lessor prior to such modification, cancellation, or abrogation, including, but not limited to, bonuses, rentals and royalties.

NOTE: The State of Louisiana does hereby reserve, and this lease shall be subject to, the imprescriptible right of surface use in the nature of a servitude in favor of the Department of Natural Resources, including its Offices and Commissions, for the sole purpose of implementing, constructing, servicing and maintaining approved coastal zone management and/or restoration projects. Utilization of any and all rights derived under this lease by the mineral lessee, its agents, successors or assigns, shall not interfere with nor hinder the reasonable surface use by the Department of Natural Resources, its Offices or Commissions, as herein above reserved.

Applicant: EAST BAY LAND & MINERALS

Bidder	Cash Payment	Price/Acre	Rental	Oil	Gas	Other

**Legend**

- 060800021
- Active\_Leases
- Counties
- 060800021\_06\_12\_06
- DOQQ2004**



TERREBONNE PARISH

T19S - R15E

P.O.B.

TURTLE BAYOU

BAYOU LA LOUTRE

JUG LAKE

AO 0136

SL 12105

SL 17893

SL 18224

SL 12105

SL 3475

AO 0137

AO 0137

2,000 Feet

N

**TRACT 38531 - Terrebonne Parish, Louisiana**

All of the lands now or formerly constituting the beds and bottoms of all water bodies of every nature and description the title of which vests in the State of Louisiana, together with all islands arising therein and other lands formed by accretion or by reliction, where allowed by law, excepting tax adjudicated lands, and not presently under mineral lease and cross hatched on August 9, 2006, situated in Terrebonne Parish, Louisiana, and more particularly described as follows: Beginning at a point having Coordinates of X = 2,134,307.50 and Y = 267,091.40; thence East 5,812.50 feet to the Northwest corner of State Lease No. 16000 having Coordinates of X = 2,140,120.00 and Y = 267,091.40; thence along the boundary of said State Lease No. 16000 the following courses: South 2,640.00 feet to its Southwest corner having Coordinates of X = 2,140,120.00 and Y = 264,451.40 and East 5,280.00 feet to its Southeast corner having Coordinates of X = 2,145,400.00 and Y = 264,451.40; thence South 7,097.30 feet to a point having Coordinates of X = 2,145,400.00 and Y = 257,354.10; thence West 9,615.06 feet to the most Easterly Northeast corner of State Lease No. 17893 having Coordinates of X = 2,135,784.94 and Y = 257,354.10; thence along the boundary of said State Lease No. 17893 the following courses: West 1,477.44 feet to a point having Coordinates of X = 2,134,307.50 and Y = 257,354.10 and North 1,587.42 feet to its most Northerly Northeast corner having Coordinates of X = 2,134,307.50 and Y = 258,941.52; thence North 8,149.88 feet to the point of beginning, **LESS AND EXCEPT** all of State Lease No. 12683, as amended, that lies entirely within the above described tract being more fully described as follows: Beginning at a point having Coordinates of X = 2,140,375.00 and Y = 261,065.00; thence along the boundary of said State Lease No. 12683, the following courses: South 27 degrees 26 minutes 11 seconds West 1,588.28 feet to a point having Coordinates of X = 2,139,643.18 and Y = 259,655.37; South 75 degrees 45 minutes 19 seconds West 5.51 feet to a point having Coordinates of X = 2,139,637.84 and Y = 259,654.01; South 78 degrees 25 minutes 09 seconds West 300.03 feet to a point having Coordinates of X = 2,139,343.92 and Y = 259,593.78; North 89 degrees 46 minutes 50 seconds West 203.76 feet to a point having Coordinates of X = 2,139,140.16 and Y = 259,594.56; South 59 degrees 53 minutes 32 seconds West 105.96 feet to a point having Coordinates of X = 2,139,048.49 and Y = 259,541.41; South 85 degrees 00 minutes 36 seconds West 344.78 feet to a point having Coordinates of X = 2,138,705.02 and Y = 259,511.42; South 81 degrees 21 minutes 17 seconds West 104.45 feet to a point having Coordinates of X = 2,138,601.76 and Y = 259,495.72; South 75 degrees 10 minutes 00 seconds West 201.21 feet to a point having Coordinates of X = 2,138,407.25 and Y = 259,444.20; South 86 degrees 41 minutes 03 seconds West 241.00 feet to a point having Coordinates of X = 2,138,166.66 and Y = 259,430.27; South 77 degrees 15 minutes 52 seconds West 113.35 feet to a point having Coordinates of X = 2,138,056.09 and Y = 259,405.28; North 00 degrees 51 minutes 37 seconds West 710.70 feet to a point having Coordinates of X = 2,138,045.42 and Y = 260,115.90; North 63 degrees 53 minutes 11 seconds East 77.47 feet to a point having Coordinates of X = 2,138,114.99 and Y = 260,150.00; along an arc to the left with a radius of 880.00 feet and a center of X =



2,137,817.40 and Y = 260,978.15 to a point having Coordinates of X = 2,138,696.00 and Y = 261,027.81; North 07 degrees 11 minutes 58 seconds East 131.96 feet to a point having Coordinates of X = 2,138,712.53 and Y = 261,158.73; along an arc to the right with a radius of 320.00 feet and a center of X = 2,139,025.57 and Y = 261,092.33 to a point having Coordinates of X = 2,138,904.24 and Y = 261,388.44; along an arc to the right with a radius of 740.00 feet and a center of X = 2,139,144.54 and Y = 260,688.54 to a point having Coordinates of X = 2,139,215.05 and Y = 261,425.17; and along an arc to the right with a radius of 2,865.00 feet and a center of X = 2,138,964.74 and Y = 258,571.13 to the point of beginning, containing approximately **1,048 acres**, all as more particularly outlined on a plat on file in the Office of Mineral Resources, Department of Natural Resources. All bearings, distances and coordinates are based on Louisiana Coordinate System of 1927, (North or South Zone), where applicable.

NOTE: The above description of the Tract nominated for lease has been provided and corrected, where required, exclusively by the nomination party. Any mineral lease selected from this Tract and awarded by the Louisiana State Mineral Board shall be without warranty of any kind, either express, implied, or statutory, including, but not limited to, the implied warranties of merchantability and fitness for a particular purpose. Should the mineral lease awarded by the Louisiana State Mineral Board be subsequently modified, cancelled or abrogated due to the existence of conflicting leases, operating agreements, private claims or other future obligations or conditions which may affect all or any portion of the leased Tract, it shall not relieve the Lessee of the obligation to pay any bonus due thereon to the Louisiana State Mineral Board, nor shall the Louisiana State Mineral Board be obligated to refund any consideration paid by the Lessor prior to such modification, cancellation, or abrogation, including, but not limited to, bonuses, rentals and royalties.

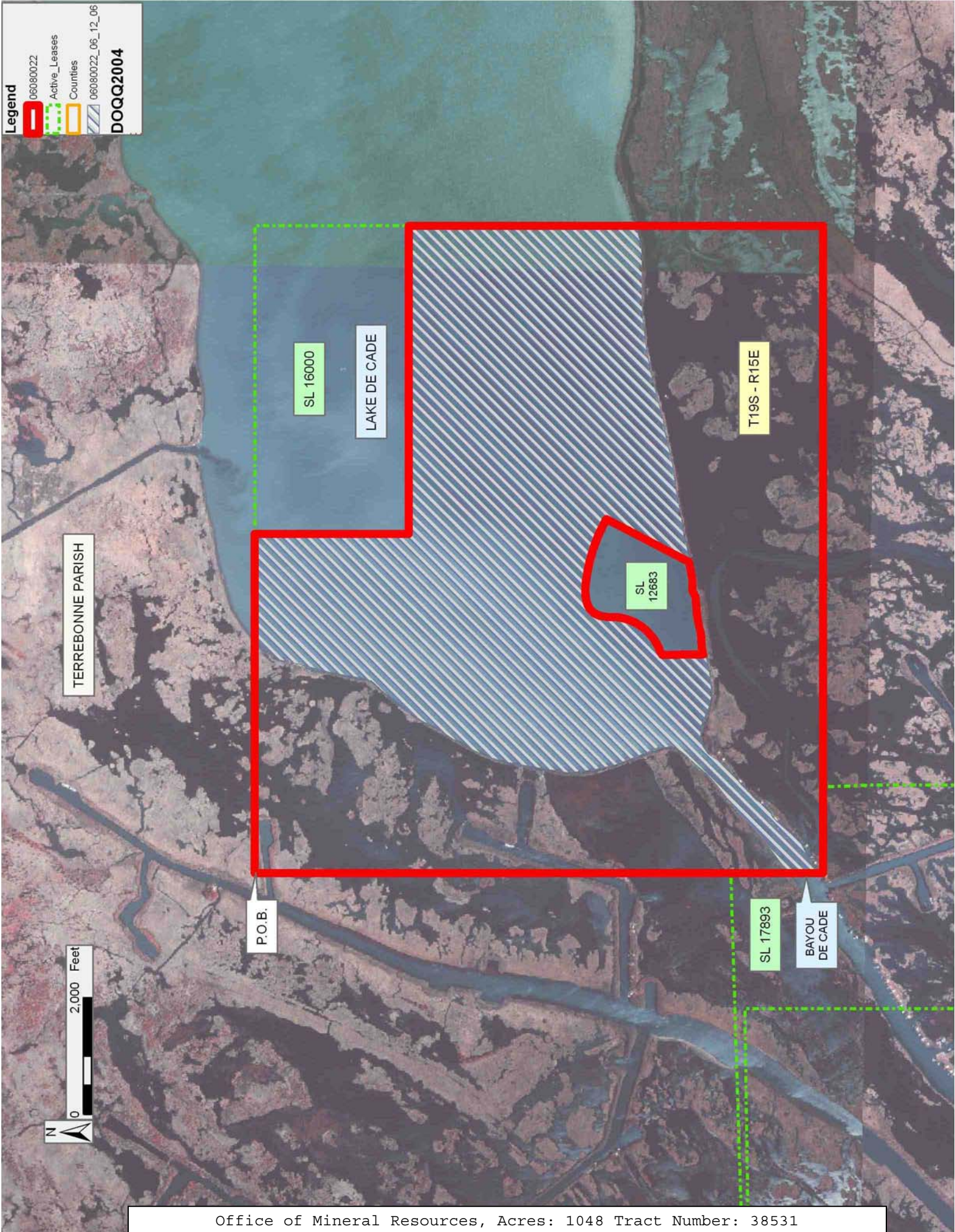
NOTE: The State of Louisiana does hereby reserve, and this lease shall be subject to, the imprescriptible right of surface use in the nature of a servitude in favor of the Department of Natural Resources, including its Offices and Commissions, for the sole purpose of implementing, constructing, servicing and maintaining approved coastal zone management and/or restoration projects. Utilization of any and all rights derived under this lease by the mineral lessee, its agents, successors or assigns, shall not interfere with nor hinder the reasonable surface use by the Department of Natural Resources, its Offices or Commissions, as herein above reserved.

Applicant: EAST BAY LAND & MINERALS

Bidder	Cash Payment	Price/Acre	Rental	Oil	Gas	Other

**Legend**

- 060800022
- Active\_Leases
- Counties
- 060800022\_06\_12\_06
- DOQQ2004**



Office of Mineral Resources, Acres: 1048 Tract Number: 38531

**TRACT 38532 - Lafourche Parish, Louisiana**

All of the lands now or formerly constituting the beds and bottoms of all water bodies of every nature and description the title of which vests in the State of Louisiana, together with all islands arising therein and other lands formed by accretion or by reliction, where allowed by law, excepting tax adjudicated lands, and not presently under mineral lease and cross hatched on August 9, 2006, situated in Lafourche Parish, Louisiana, and more particularly described as follows: Beginning at a corner on the Northern boundary of State Lease No. 18846 having Coordinates of X = 2,401,410.00 and Y = 253,500.00; thence West 1,920.00 feet along the boundary of said State Lease No. 18846 to a point having Coordinates of X = 2,399,490.00 and Y = 253,500.00; thence North approximately 1,214 feet along the boundary of said State Lease No. 18846 to a point on the South boundary of State Lease No. 1217, as amended, having a Coordinate of X = 2,399,490.00; thence Easterly approximately 1,920 feet along the South boundary of said State Lease No. 1217 to a point having a Coordinate of X = 2,401,410.00; thence South approximately 1,214 feet to the point of beginning, **LESS AND EXCEPT** any portion of said State Lease No. 1217 which may lie within the above described tract, containing approximately **9 acres** , all as more particularly outlined on a plat on file in the Office of Mineral Resources, Department of Natural Resources. All bearings, distances and coordinates are based on Louisiana Coordinate System of 1927, (North or South Zone), where applicable.

NOTE: The above description of the Tract nominated for lease has been provided and corrected, where required, exclusively by the nomination party. Any mineral lease selected from this Tract and awarded by the Louisiana State Mineral Board shall be without warranty of any kind, either express, implied, or statutory, including, but not limited to, the implied warranties of merchantability and fitness for a particular purpose. Should the mineral lease awarded by the Louisiana State Mineral Board be subsequently modified, cancelled or abrogated due to the existence of conflicting leases, operating agreements, private claims or other future obligations or conditions which may affect all or any portion of the leased Tract, it shall not relieve the Lessee of the obligation to pay any bonus due thereon to the Louisiana State Mineral Board, nor shall the Louisiana State Mineral Board be obligated to refund any consideration paid by the Lessor prior to such modification, cancellation, or abrogation, including, but not limited to, bonuses, rentals and royalties.

NOTE: The State of Louisiana does hereby reserve, and this lease shall be subject to, the imprescriptible right of surface use in the nature of a servitude in favor of the Department of Natural Resources, including its Offices and Commissions, for the sole purpose of implementing, constructing, servicing and maintaining approved coastal zone management and/or restoration projects. Utilization of any and all rights derived under this lease by the mineral lessee, its agents, successors or assigns, shall not interfere with nor hinder the reasonable surface use by the





Department of Natural Resources, its Offices or Commissions, as herein above reserved.

NOTE: The Department of Wildlife and Fisheries has designated certain areas in the coastal waters of the State of Louisiana as Oyster Seed Bed Areas. The exact location of those Seed Bed Areas must be obtained from the Department of Wildlife and Fisheries and any work done under a mineral lease from the State of Louisiana may necessarily be conducted in conformity with the rules and regulations promulgated by the said Department of Wildlife and Fisheries for Oyster Seed Bed Areas.

Applicant: LANDSOLUTIONS, INC.

Bidder	Cash Payment	Price/Acre	Rental	Oil	Gas	Other

**Legend**

-  06080067
-  Active\_Leases
-  Counties
-  06080067\_06\_12\_06

**DOQQ2004**



**TRACT 38533 - Jefferson Parish, Louisiana**

All of the lands now or formerly constituting the beds and bottoms of all water bodies of every nature and description the title of which vests in the State of Louisiana, together with all islands arising therein and other lands formed by accretion or by reliction, where allowed by law, excepting tax adjudicated lands, and not presently under mineral lease and cross hatched on August 9, 2006, situated in Jefferson Parish, Louisiana, and more particularly described as follows: Beginning at a point on the East boundary of State Lease No. 18851 having Coordinates of X = 2,422,138.52 and Y = 246,050.00; thence along the boundary of said State Lease No. 18851 the following courses: North 01 degrees 38 minutes 25 seconds East 2,147.88 feet and North 68 degrees 33 minutes 06 seconds West 5,245.25 feet to its Northern most Northeast corner, also being the Southeast corner of State Lease No. 18850 having Coordinates of X = 2,417,318.00 and Y = 250,115.00; thence North 33 degrees 07 minutes 51 seconds West 3,068.32 feet along the East boundary of said State Lease No. 18850 to its Northern most point, also being the Southern most Northeast corner of State Lease No. 18849 having Coordinates of X = 2,415,641.00 and Y = 252,684.48; thence along the boundary of said State Lease No. 18849 the following courses: North 33 degrees 07 minutes 51 seconds West 2,160.81 feet and North 84 degrees 24 minutes 01 seconds West 216.03 feet to a point on its Northern boundary, also being the Southeast corner of State Lease No. 18857 having Coordinates of X = 2,414,245.00 and Y = 254,515.08; thence North approximately 199 feet along the East boundary of said State Lease No. 18857 to a point on the South boundary of State Lease No. 1217, as amended; thence Easterly approximately 12,843 feet along the South boundary of said State Lease No. 1217 to its Southeast corner; thence Easterly approximately 1,278 feet to a point having Coordinates of X = 2,428,365.90 and Y = 254,714.18; thence South 910.18 feet to the Northwest corner of State Lease No. 17617 having Coordinates of X = 2,428,365.90 and Y = 253,804.00; thence along the boundary of said State Lease No. 17617 the following courses: South 01 degrees 25 minutes 38 seconds West 1,719.98 feet and South 00 degrees 58 minutes 55 seconds East 517.86 feet to its Southwest corner, also being the Northwest corner of State Lease No. 17739 having Coordinates of X = 2,428,331.94 and Y = 251,566.77; thence along the boundary of said State Lease No. 17739 the following courses: South 00 degrees 58 minutes 55 seconds East 775.56 feet and South 01 degrees 15 minutes 46 seconds East 1,116.11 feet to its Southwest corner, also being a point on the North boundary of State Lease No. 17432 having Coordinates of X = 2,428,369.83 and Y = 249,675.49; thence along the boundary of said State Lease No. 17432 the following courses: South 50 degrees 02 minutes 01 seconds West 182.05 feet and South 1,699.91 feet to a point on the North boundary of State Lease No. 2084, having Coordinates of X = 2,428,230.30 and Y = 247,858.64; thence along the boundary of said State Lease No. 2084 the following courses; South 89 degrees 21 minutes 32 seconds West 4,164.30 feet and South 00 degrees 39 minutes 56 seconds East 1,762.16 feet to a point on its West boundary; thence West 1,948.21 feet to the point of beginning, **LESS AND EXCEPT** any portion of State Lease No. 1217, as amended, State Lease No. 2084, as

amended, State Lease No. 17617, State Lease No. 18849 and State Lease No. 18857 which may lie within the above described tract, containing approximately **1,286 acres**, all as more particularly outlined on a plat on file in the Office of Mineral Resources, Department of Natural Resources. All bearings, distances and coordinates are based on Louisiana Coordinate System of 1927, (North or South Zone), where applicable.

NOTE: The above description of the Tract nominated for lease has been provided and corrected, where required, exclusively by the nomination party. Any mineral lease selected from this Tract and awarded by the Louisiana State Mineral Board shall be without warranty of any kind, either express, implied, or statutory, including, but not limited to, the implied warranties of merchantability and fitness for a particular purpose. Should the mineral lease awarded by the Louisiana State Mineral Board be subsequently modified, cancelled or abrogated due to the existence of conflicting leases, operating agreements, private claims or other future obligations or conditions which may affect all or any portion of the leased Tract, it shall not relieve the Lessee of the obligation to pay any bonus due thereon to the Louisiana State Mineral Board, nor shall the Louisiana State Mineral Board be obligated to refund any consideration paid by the Lessor prior to such modification, cancellation, or abrogation, including, but not limited to, bonuses, rentals and royalties.

NOTE: The State of Louisiana does hereby reserve, and this lease shall be subject to, the imprescriptible right of surface use in the nature of a servitude in favor of the Department of Natural Resources, including its Offices and Commissions, for the sole purpose of implementing, constructing, servicing and maintaining approved coastal zone management and/or restoration projects. Utilization of any and all rights derived under this lease by the mineral lessee, its agents, successors or assigns, shall not interfere with nor hinder the reasonable surface use by the Department of Natural Resources, its Offices or Commissions, as herein above reserved.

NOTE: The Department of Wildlife and Fisheries has designated certain areas in the coastal waters of the State of Louisiana as Oyster Seed Bed Areas. The exact location of those Seed Bed Areas must be obtained from the Department of Wildlife and Fisheries and any work done under a mineral lease from the State of Louisiana may necessarily be conducted in conformity with the rules and regulations promulgated by the said Department of Wildlife and Fisheries for Oyster Seed Bed Areas.



Applicant: HYRAX EXPLORATION

Bidder	Cash Payment	Price/Acre	Rental	Oil	Gas	Other

**Legend**

- 060800075
- Active\_Leases
- Counties
- 060800075\_06\_12\_06
- DOQQ2004**

