

TRACT 38514 - Portion of Block 33, Breton Sound Area, Plaquemines Parish, Louisiana

All of the lands now or formerly constituting the beds and bottoms of all water bodies of every nature and description the title of which vests in the State of Louisiana, together with all islands arising therein and other lands formed by accretion or by reliction, where allowed by law, excepting tax adjudicated lands, and not presently under mineral lease and cross hatched on August 9, 2006, situated in Plaquemines Parish, Louisiana, and more particularly described as follows: Beginning at a point on the South line of Block 33, Breton Sound Area, having Coordinates of X = 2,642,725.00 and Y = 307,580.00; thence West 7,375.00 feet along the South line of said Block 33 to its Southwest corner having Coordinates of X = 2,635,350.00 and Y = 307,580.00; thence North 8,267.00 feet along the West line of said Block 33 to the Southwest corner of State Lease No. 18078 having Coordinates of X = 2,635,350.00 and Y = 315,847.00; thence along the boundary of said State Lease No. 18078 the following courses: East 3,766.00 feet, North 2,271.00 feet, North 39 degrees 52 minutes 03 seconds West 844.35 feet and South 50 degrees 07 minutes 58 seconds West 2,638.02 feet to a point on the West line of said State Lease No. 18078, also being the Eastern most Southeast corner of State Lease No. 18663 having Coordinates of X = 2,636,550.00 and Y = 317,075.06; thence along the boundary of said State Lease No. 18663 the following courses: North 2,154.94 feet and West 1,200.00 feet to the Northwest corner of said State Lease No. 18663, also being a point on the West line of said Block 33 having Coordinates of X = 2,635,350.00 and Y = 319,230.00; thence North 3,100.00 feet along the West line of said Block 33 to its Northwest corner having Coordinates of X = 2,635,350.00 and Y = 322,330.00; thence East 7,375.00 feet along the North line of said Block 33 to a point having Coordinates of X = 2,642,725.00 and Y = 322,330.00; thence South 14,750.00 feet to the point of beginning, containing approximately **2,275.45 acres**, all as more particularly outlined on a plat on file in the Office of Mineral Resources, Department of Natural Resources. All bearings, distances and coordinates are based on Louisiana Coordinate System of 1927, (North or South Zone), where applicable.

NOTE: The above description of the Tract nominated for lease has been provided and corrected, where required, exclusively by the nomination party. Any mineral lease selected from this Tract and awarded by the Louisiana State Mineral Board shall be without warranty of any kind, either express, implied, or statutory, including, but not limited to, the implied warranties of merchantability and fitness for a particular purpose. Should the mineral lease awarded by the Louisiana State Mineral Board be subsequently modified, cancelled or abrogated due to the existence of conflicting leases, operating agreements, private claims or other future obligations or conditions which may affect all or any portion of the leased Tract, it shall not relieve the Lessee of the obligation to pay any bonus due thereon to the Louisiana State Mineral Board, nor shall the Louisiana State Mineral Board be obligated to refund any consideration

paid by the Lessor prior to such modification, cancellation, or abrogation, including, but not limited to, bonuses, rentals and royalties.

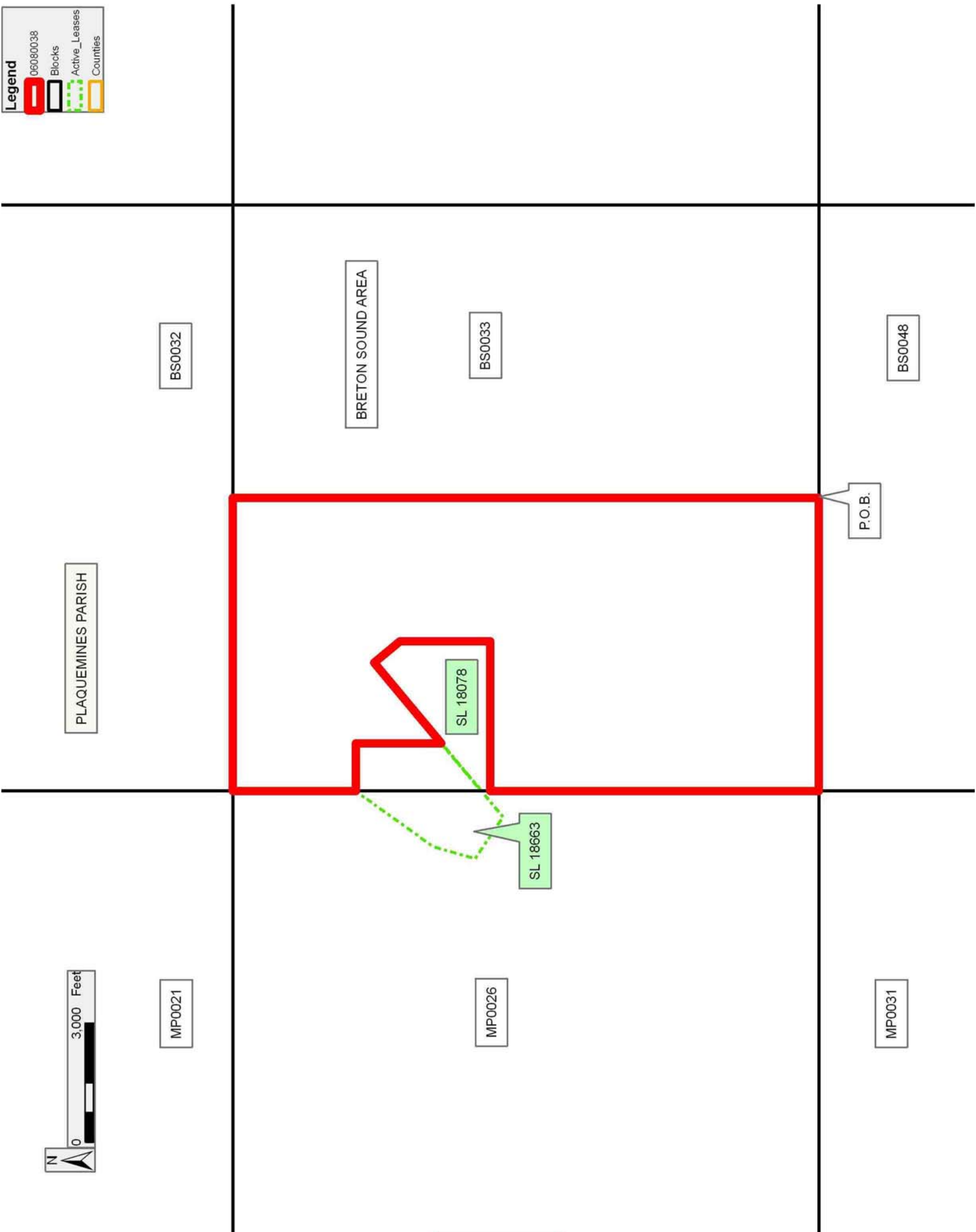
NOTE: The State of Louisiana does hereby reserve, and this lease shall be subject to, the imprescriptible right of surface use in the nature of a servitude in favor of the Department of Natural Resources, including its Offices and Commissions, for the sole purpose of implementing, constructing, servicing and maintaining approved coastal zone management and/or restoration projects. Utilization of any and all rights derived under this lease by the mineral lessee, its agents, successors or assigns, shall not interfere with nor hinder the reasonable surface use by the Department of Natural Resources, its Offices or Commissions, as herein above reserved.

Applicant: BONURA ENERGY INVESTMENTS

Bidder	Cash Payment	Price/Acre	Rental	Oil	Gas	Other

Legend

- 06080038
- Blocks
- Active_Leases
- Counties



TRACT 38515 - Portion of Block 33, Breton Sound Area, Plaquemines Parish, Louisiana

All of the lands now or formerly constituting the beds and bottoms of all water bodies of every nature and description the title of which vests in the State of Louisiana, together with all islands arising therein and other lands formed by accretion or by reliction, where allowed by law, excepting tax adjudicated lands, and not presently under mineral lease and cross hatched on August 9, 2006, situated in Plaquemines Parish, Louisiana, and more particularly described as follows: Beginning at a point on the South line of Block 33, Breton Sound Area, having Coordinates of X = 2,642,725.00 and Y = 307,580.00; thence North 14,750.00 feet to a point on the North line of said Block 33 having Coordinates of X = 2,642,725.00 and Y = 322,330.00; thence East 7,375.00 feet along the North line of said Block 33 to its Northeast corner having Coordinates of X = 2,650,100.00 and Y = 322,330.00; thence South 7,514.46 feet along the East line of said Block 33 to the Northeast corner of State Lease No. 16298, as amended, having Coordinates of X = 2,650,100.00 and Y = 314,815.54; thence along the boundary of said State Lease No. 16298 the following courses: West 1,022.05 feet and South 2,035.54 feet to the Southwest corner of said State Lease No. 16298, also being a point on the North line of State Lease No. 16795, as amended, having Coordinates of X = 2,649,077.95 and Y = 312,780.00; thence along the boundary of said State Lease No. 16795 the following courses: West 927.95 feet, South 4,204.21 feet and East 1,950.00 feet to the Southeast corner of said State Lease No. 16795, also being a point on the East line of said Block 33 having Coordinates of X = 2,650,100.00 and Y = 308,575.79; thence South 995.79 feet along the East line of said Block 33 to its Southeast corner having Coordinates of X = 2,650,100.00 and Y = 307,580.00; thence West 7,375.00 feet along the South line of said Block 33 to the point of beginning, containing approximately **2,261.31 acres**, all as more particularly outlined on a plat on file in the Office of Mineral Resources, Department of Natural Resources. All bearings, distances and coordinates are based on Louisiana Coordinate System of 1927, (North or South Zone), where applicable.

NOTE: The above description of the Tract nominated for lease has been provided and corrected, where required, exclusively by the nomination party. Any mineral lease selected from this Tract and awarded by the Louisiana State Mineral Board shall be without warranty of any kind, either express, implied, or statutory, including, but not limited to, the implied warranties of merchantability and fitness for a particular purpose. Should the mineral lease awarded by the Louisiana State Mineral Board be subsequently modified, cancelled or abrogated due to the existence of conflicting leases, operating agreements, private claims or other future obligations or conditions which may affect all or any portion of the leased Tract, it shall not relieve the Lessee of the obligation to pay any bonus due thereon to the Louisiana State Mineral Board, nor shall the Louisiana State Mineral Board be obligated to refund any consideration paid by the Lessor prior to such modification, cancellation, or abrogation, including, but not limited to, bonuses, rentals and royalties.

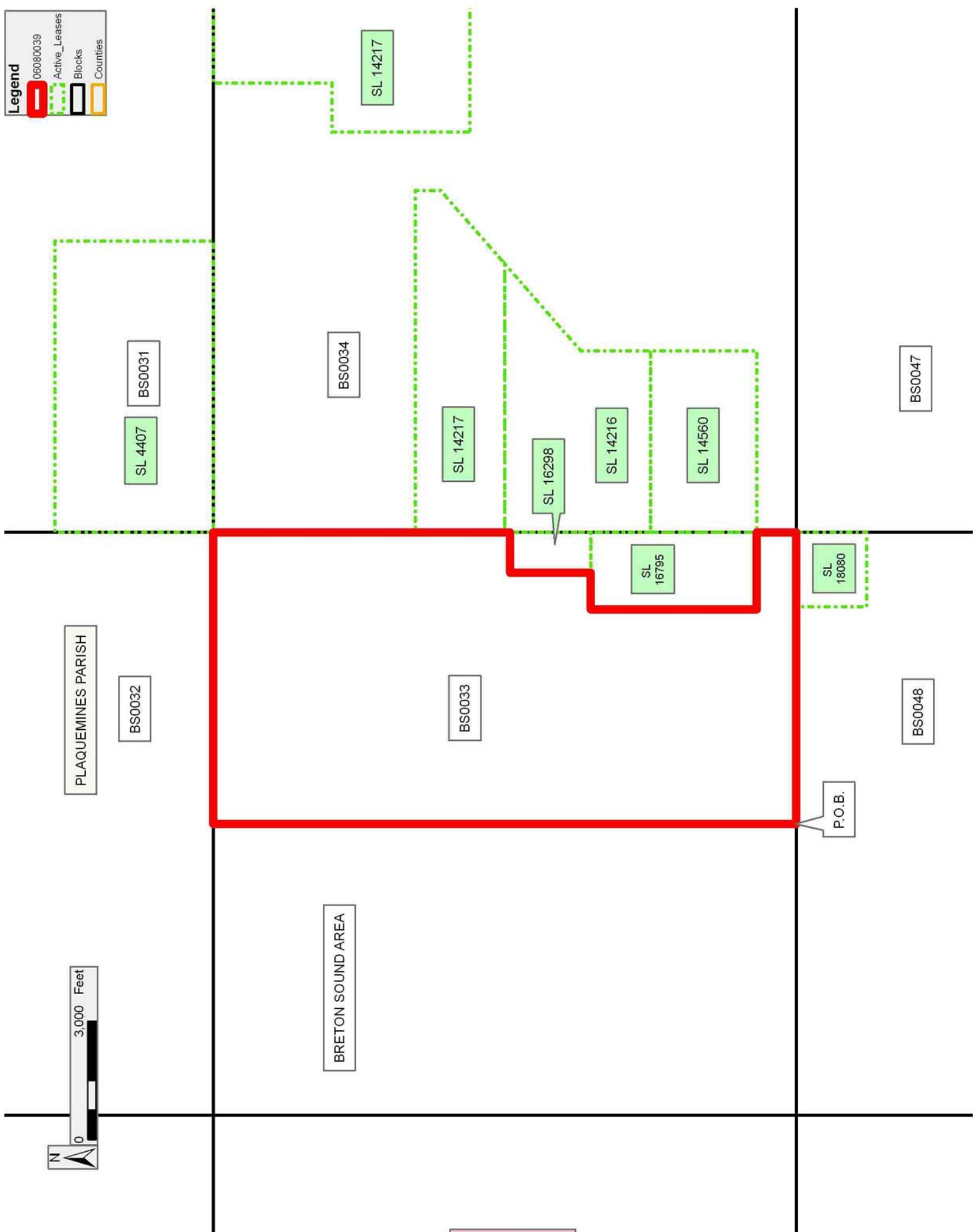
NOTE: The State of Louisiana does hereby reserve, and this lease shall be subject to, the imprescriptible right of surface use in the nature of a servitude in favor of the Department of Natural Resources, including its Offices and Commissions, for the sole purpose of implementing, constructing, servicing and maintaining approved coastal zone management and/or restoration projects. Utilization of any and all rights derived under this lease by the mineral lessee, its agents, successors or assigns, shall not interfere with nor hinder the reasonable surface use by the Department of Natural Resources, its Offices or Commissions, as herein above reserved.

Applicant: BONURA ENERGY INVESTMENTS

Bidder	Cash Payment	Price/Acre	Rental	Oil	Gas	Other

Legend

- 06080039
- Active_Leases
- Blocks
- Counties



TRACT 38516 - Portion of Block 26, Main Pass Area, Revised, Plaquemines Parish, Louisiana

All of the lands now or formerly constituting the beds and bottoms of all water bodies of every nature and description the title of which vests in the State of Louisiana, together with all islands arising therein and other lands formed by accretion or by reliction, where allowed by law, excepting tax adjudicated lands, and not presently under mineral lease and cross hatched on August 9, 2006, situated in Plaquemines Parish, Louisiana, and more particularly described as follows: Beginning at the Southeast corner of Block 26, Main Pass Area, Revised, having Coordinates of X = 2,635,350.00 and Y = 307,580.00; thence West 7,375.00 feet along the South line of said Block 26 to a point having Coordinates of X = 2,627,975.00 and Y = 307,580.00; thence North 14,750.00 feet to a point on the North line of said Block 26 having Coordinates of X = 2,627,975.00 and Y = 322,330.00; thence East 7,375.00 feet along the North line of said Block 26 to its Northeast corner having Coordinates of X = 2,635,350.00 and Y = 322,330.00; thence South 3,100.00 feet along the East line of said Block 26 to the Northern most Northwest corner of State Lease No. 18663 having Coordinates of X = 2,635,350.00 and Y = 319,230.00; thence along the boundary of said State Lease No. 18663 the following courses: South 35 degrees 40 minutes 36 seconds West 2,400.51 feet, South 15 degrees 56 minutes 43 seconds West 1,092.03 feet, South 56 degrees 18 minutes 36 seconds East 1,261.94 feet and North 50 degrees 07 minutes 57 seconds East 846.87 feet to a point on the South line of said State Lease No. 18663, also being a point on the East line of said Block 26 having Coordinates of X = 2,635,350.00 and Y = 316,072.86; thence South 8,492.86 feet along the East line of said Block 26 to the point of beginning, **LESS AND EXCEPT** all of State Lease No. 16935 that lies within the above description, more particularly described as follows: Beginning at the Northwest corner of said State Lease No. 16935 having Coordinates of X = 2,630,883.00 and Y = 321,820.00; thence East 2,187.00 feet, South 2,148.00 feet, West 2,187.00 feet and North 2,148.00 feet to the point of beginning, containing approximately **2,305.90 acres**, all as more particularly outlined on a plat on file in the Office of Mineral Resources, Department of Natural Resources. All bearings, distances and coordinates are based on Louisiana Coordinate System of 1927, (North or South Zone), where applicable.

NOTE: The above description of the Tract nominated for lease has been provided and corrected, where required, exclusively by the nomination party. Any mineral lease selected from this Tract and awarded by the Louisiana State Mineral Board shall be without warranty of any kind, either express, implied, or statutory, including, but not limited to, the implied warranties of merchantability and fitness for a particular purpose. Should the mineral lease awarded by the Louisiana State Mineral Board be subsequently modified, cancelled or abrogated due to the existence of conflicting leases, operating agreements, private claims or other future obligations or conditions which may affect all or any portion of the leased Tract, it shall not relieve the Lessee of the obligation to pay any bonus due thereon to the Louisiana State Mineral Board, nor shall





the Louisiana State Mineral Board be obligated to refund any consideration paid by the Lessor prior to such modification, cancellation, or abrogation, including, but not limited to, bonuses, rentals and royalties.

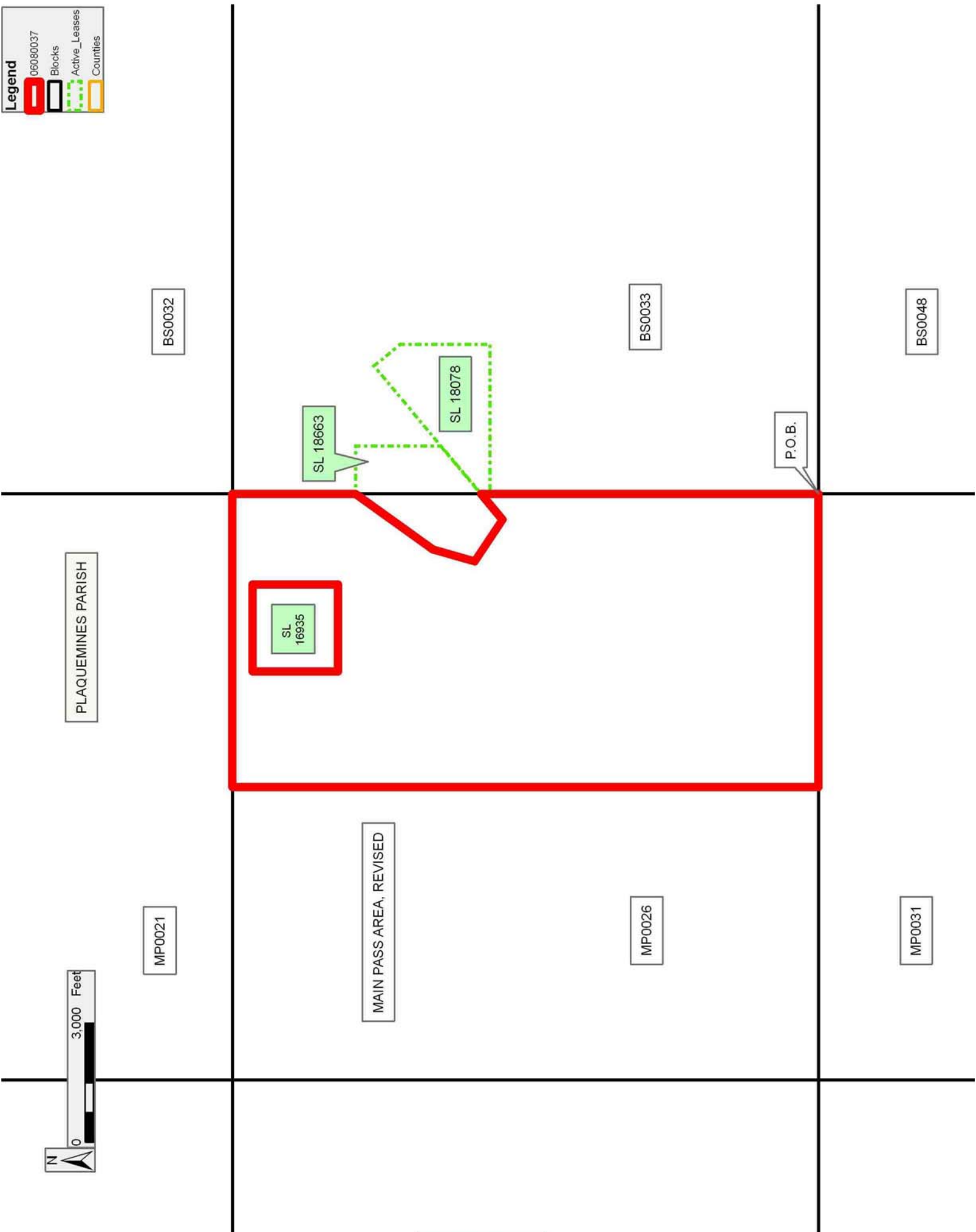
NOTE: The State of Louisiana does hereby reserve, and this lease shall be subject to, the imprescriptible right of surface use in the nature of a servitude in favor of the Department of Natural Resources, including its Offices and Commissions, for the sole purpose of implementing, constructing, servicing and maintaining approved coastal zone management and/or restoration projects. Utilization of any and all rights derived under this lease by the mineral lessee, its agents, successors or assigns, shall not interfere with nor hinder the reasonable surface use by the Department of Natural Resources, its Offices or Commissions, as herein above reserved.

Applicant: BONURA ENERGY INVESTMENTS

Bidder	Cash Payment	Price/Acre	Rental	Oil	Gas	Other

Legend

-  06080037
-  Blocks
-  Active_Leases
-  Counties



TRACT 38517 - Portion of Block 36, Breton Sound Area, Plaquemines Parish, Louisiana

All of the lands now or formerly constituting the beds and bottoms of all water bodies of every nature and description the title of which vests in the State of Louisiana, together with all islands arising therein and other lands formed by accretion or by reliction, where allowed by law, excepting tax adjudicated lands, and not presently under mineral lease and cross hatched on August 9, 2006, situated in Plaquemines Parish, Louisiana, and more particularly described as follows: Beginning at the Southwest corner of Block 36, Breton Sound Area, having Coordinates of X = 2,679,600.00 and Y = 307,580.00; thence North 9,700.00 feet along the West line of said Block 36 to the Southwest corner of State Lease No. 1230, as amended, having Coordinates of X = 2,679,600.00 and Y = 317,280.00; thence along the boundary of said State Lease No. 1230 the following courses: East 7,500.00 feet, South 1,300.00 feet, South 37 degrees 20 minutes 00 seconds West 7,420.24 feet and South 21 degrees 48 minutes 05 seconds West 2,692.58 feet to its most southerly Southwest corner, also being a point on the South line of said Block 36 having Coordinates of X = 2,681,600.00 and Y = 307,580.00; thence West 2,000.00 feet along the South line of said Block 36 to the point of beginning, containing approximately **1,078.40 acres**, all as more particularly outlined on a plat on file in the Office of Mineral Resources, Department of Natural Resources. All bearings, distances and coordinates are based on Louisiana Coordinate System of 1927, (North or South Zone), where applicable.

NOTE: The above description of the Tract nominated for lease has been provided and corrected, where required, exclusively by the nomination party. Any mineral lease selected from this Tract and awarded by the Louisiana State Mineral Board shall be without warranty of any kind, either express, implied, or statutory, including, but not limited to, the implied warranties of merchantability and fitness for a particular purpose. Should the mineral lease awarded by the Louisiana State Mineral Board be subsequently modified, cancelled or abrogated due to the existence of conflicting leases, operating agreements, private claims or other future obligations or conditions which may affect all or any portion of the leased Tract, it shall not relieve the Lessee of the obligation to pay any bonus due thereon to the Louisiana State Mineral Board, nor shall the Louisiana State Mineral Board be obligated to refund any consideration paid by the Lessor prior to such modification, cancellation, or abrogation, including, but not limited to, bonuses, rentals and royalties.

NOTE: The State of Louisiana does hereby reserve, and this lease shall be subject to, the imprescriptible right of surface use in the nature of a servitude in favor of the Department of Natural Resources, including its Offices and Commissions, for the sole purpose of implementing, constructing, servicing and maintaining approved coastal zone management and/or restoration projects. Utilization of any and all rights derived under this lease by the mineral lessee, its agents, successors or assigns, shall not interfere with nor hinder the reasonable surface use by the

Department of Natural Resources, its Offices or Commissions, as herein above reserved.

NOTE: It appears, according to our records, that a portion of this Tract is located within the restrictive safety fairway area as set out by the Corps of Engineers, U.S. Army and/or the restrictive anchorage area as set out by the U.S. Coast Guard.

Applicant: BONURA ENERGY INVESTMENTS

Bidder	Cash Payment	Price/Acre	Rental	Oil	Gas	Other

Legend

- 06080040
- Active_Leases
- Blocks
- Counties



TRACT 38518 - Portion of Block 47, Breton Sound Area, Plaquemines Parish, Louisiana

All of the lands now or formerly constituting the beds and bottoms of all water bodies of every nature and description the title of which vests in the State of Louisiana, together with all islands arising therein and other lands formed by accretion or by reliction, where allowed by law, excepting tax adjudicated lands, and not presently under mineral lease and cross hatched on August 9, 2006, situated in Plaquemines Parish, Louisiana, and more particularly described as follows: Beginning at a point on the East line of Block 47, Breton Sound Area, having Coordinates of X = 2,664,850.00 and Y = 300,205.00; thence West 3,552.00 feet to a point on the North line of State Lease No. 16569, as amended, having Coordinates of X = 2,661,298.00 and Y = 300,205.00; thence along the boundary of said State Lease No. 16569 the following courses: North 75 degrees 24 minutes 12 seconds West 1,289.62 feet, West 795.00 feet and South 56 degrees 27 minutes 32 seconds West 588.20 feet to a point on the North line of said State Lease No. 16569 having Coordinates of X = 2,658,764.74 and Y = 300,205.00; thence West 8,664.74 feet to a point on the West line of said Block 47 having Coordinates of X = 2,650,100.00 and Y = 300,205.00; thence North 7,375.00 feet along the West line of said Block 47 to its Northwest corner having Coordinates of X = 2,650,100.00 and Y = 307,580.00; thence East 14,750.00 feet along the North line of said Block 47 to its Northeast corner having Coordinates of X = 2,664,850.00 and Y = 307,580.00; thence South 7,375.00 feet along the East line of said Block 47 to the point of beginning, containing approximately **2,484.86 acres**, all as more particularly outlined on a plat on file in the Office of Mineral Resources, Department of Natural Resources. All bearings, distances and coordinates are based on Louisiana Coordinate System of 1927, (North or South Zone), where applicable.

NOTE: The above description of the Tract nominated for lease has been provided and corrected, where required, exclusively by the nomination party. Any mineral lease selected from this Tract and awarded by the Louisiana State Mineral Board shall be without warranty of any kind, either express, implied, or statutory, including, but not limited to, the implied warranties of merchantability and fitness for a particular purpose. Should the mineral lease awarded by the Louisiana State Mineral Board be subsequently modified, cancelled or abrogated due to the existence of conflicting leases, operating agreements, private claims or other future obligations or conditions which may affect all or any portion of the leased Tract, it shall not relieve the Lessee of the obligation to pay any bonus due thereon to the Louisiana State Mineral Board, nor shall the Louisiana State Mineral Board be obligated to refund any consideration paid by the Lessor prior to such modification, cancellation, or abrogation, including, but not limited to, bonuses, rentals and royalties.

NOTE: The State of Louisiana does hereby reserve, and this lease shall be subject to, the imprescriptible right of surface use in the nature of a servitude in favor of the Department of Natural Resources, including its

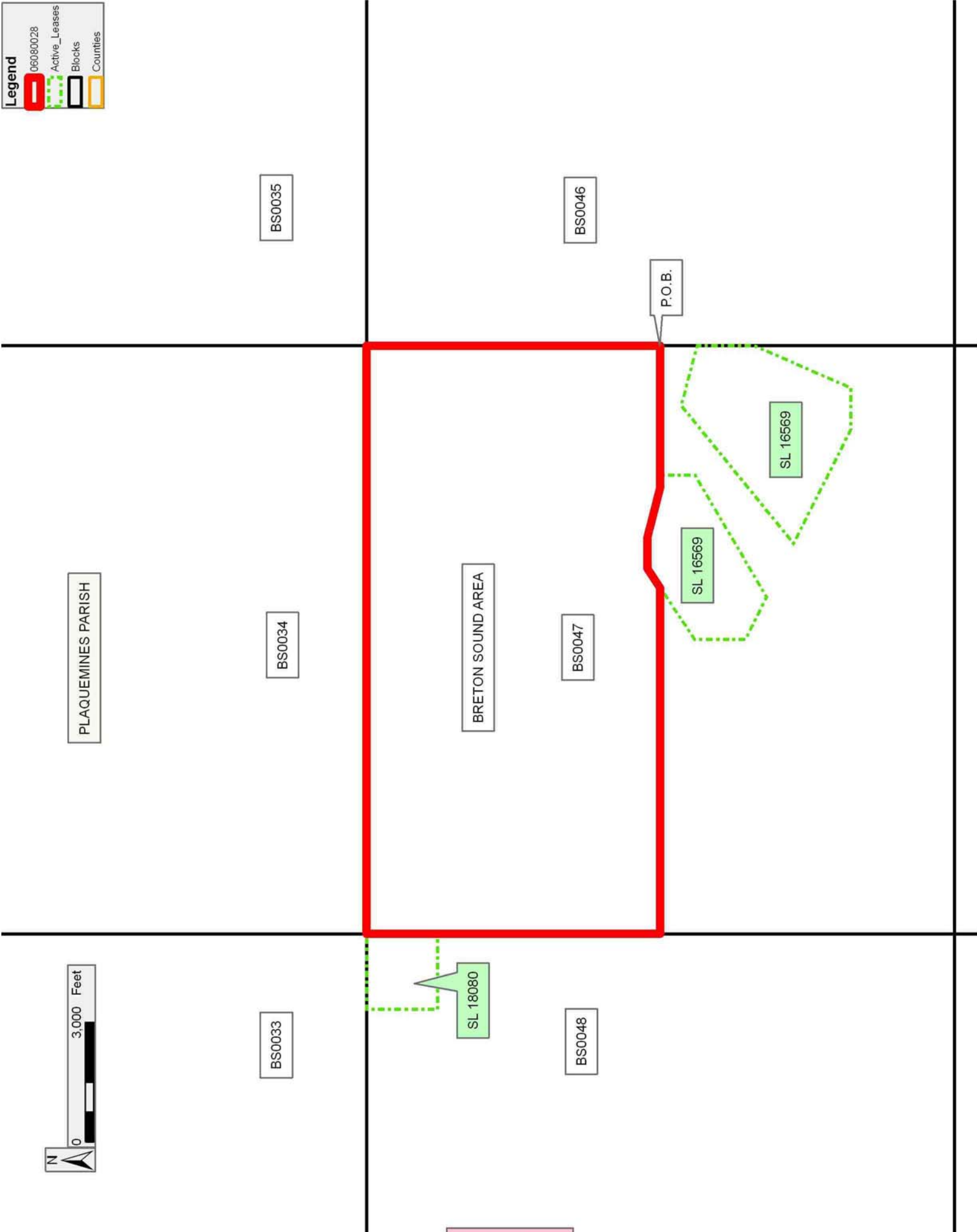
Offices and Commissions, for the sole purpose of implementing, constructing, servicing and maintaining approved coastal zone management and/or restoration projects. Utilization of any and all rights derived under this lease by the mineral lessee, its agents, successors or assigns, shall not interfere with nor hinder the reasonable surface use by the Department of Natural Resources, its Offices or Commissions, as herein above reserved.

Applicant: BONURA ENERGY INVESTMENTS

Bidder	Cash Payment	Price/Acre	Rental	Oil	Gas	Other

Legend

- 06080028
- Active_Leases
- Blocks
- Counties



TRACT 38519 - Portion of Block 46, Breton Sound Area, Plaquemines Parish, Louisiana

All of the lands now or formerly constituting the beds and bottoms of all water bodies of every nature and description the title of which vests in the State of Louisiana, together with all islands arising therein and other lands formed by accretion or by reliction, where allowed by law, excepting tax adjudicated lands, and not presently under mineral lease and cross hatched on August 9, 2006, situated in Plaquemines Parish, Louisiana, and more particularly described as follows: Beginning at a point on the West line of Block 46, Breton Sound Area, having Coordinates of X = 2,664,850.00 and Y = 300,205.00; thence North 7,375.00 feet to the Northwest corner of said Block 46 having Coordinates of X = 2,664,850.00 and Y = 307,580.00; thence East 1,427.71 feet along the North line of said Block 46 to the Northwest corner of State Lease No. 18082 having Coordinates of X = 2,666,277.71 and Y = 307,580.00; thence along the boundary of said State Lease No. 18082 the following courses: South 26 degrees 48 minutes 13 seconds East 3,631.14 feet, East 1,170.95 feet and North 3,241.00 feet to its Northeast corner having Coordinates of X = 2,669,086.06 and Y = 307,580.00; thence East 6,513.94 feet to a point on the North line of said Block 46 having Coordinates of X = 2,675,600.00 and Y = 307,580.00; thence South 7,375.00 feet to a point having Coordinates of X = 2,675,600.00 and Y = 300,205.00; thence West 10,750.00 feet to a point on the West line of said Block 46, also being the point of beginning, containing approximately **1,672.01 acres**, all as more particularly outlined on a plat on file in the Office of Mineral Resources, Department of Natural Resources. All bearings, distances and coordinates are based on Louisiana Coordinate System of 1927, (North or South Zone), where applicable.

NOTE: The above description of the Tract nominated for lease has been provided and corrected, where required, exclusively by the nomination party. Any mineral lease selected from this Tract and awarded by the Louisiana State Mineral Board shall be without warranty of any kind, either express, implied, or statutory, including, but not limited to, the implied warranties of merchantability and fitness for a particular purpose. Should the mineral lease awarded by the Louisiana State Mineral Board be subsequently modified, cancelled or abrogated due to the existence of conflicting leases, operating agreements, private claims or other future obligations or conditions which may affect all or any portion of the leased Tract, it shall not relieve the Lessee of the obligation to pay any bonus due thereon to the Louisiana State Mineral Board, nor shall the Louisiana State Mineral Board be obligated to refund any consideration paid by the Lessor prior to such modification, cancellation, or abrogation, including, but not limited to, bonuses, rentals and royalties.

NOTE: The State of Louisiana does hereby reserve, and this lease shall be subject to, the imprescriptible right of surface use in the nature of a servitude in favor of the Department of Natural Resources, including its Offices and Commissions, for the sole purpose of implementing,

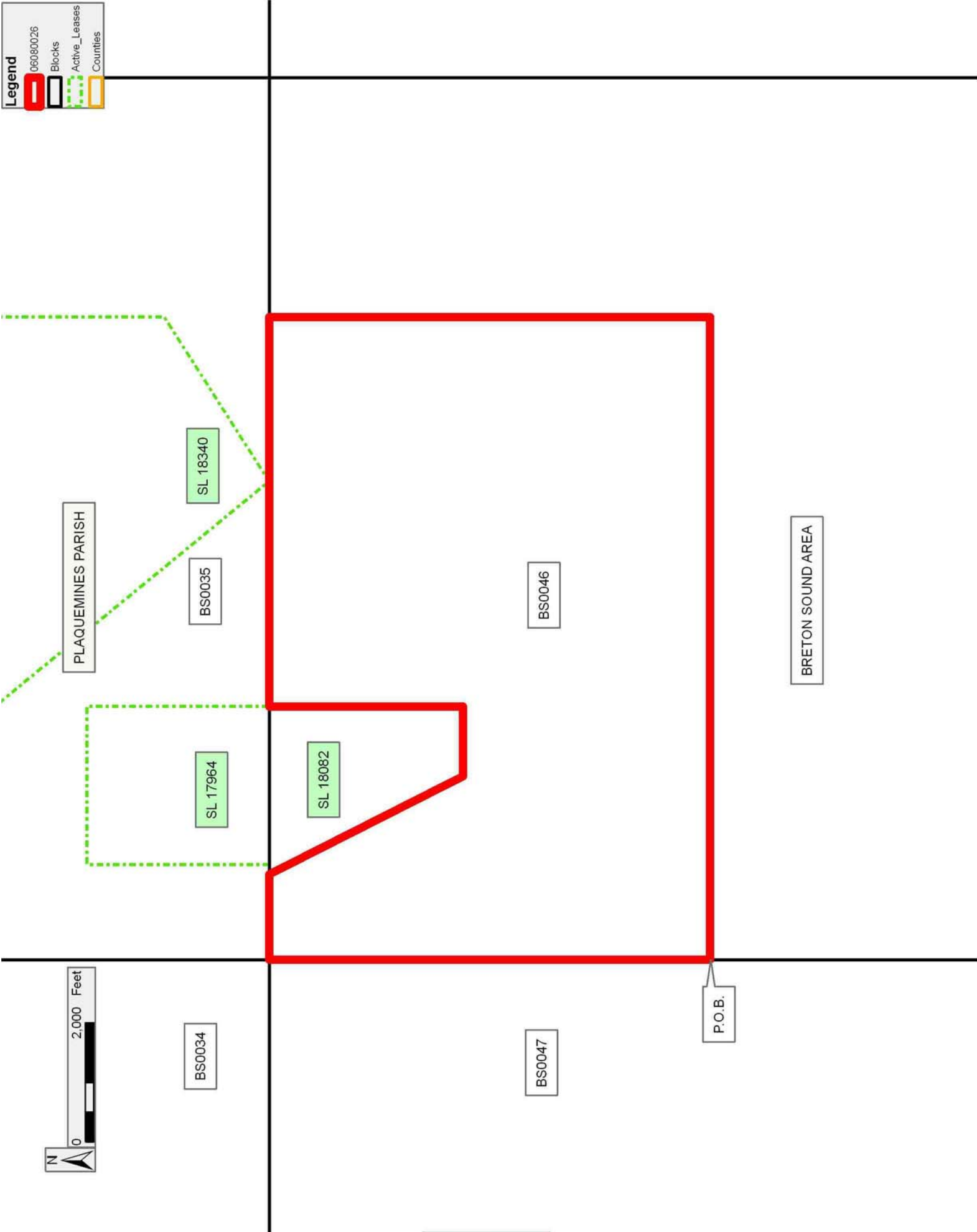
constructing, servicing and maintaining approved coastal zone management and/or restoration projects. Utilization of any and all rights derived under this lease by the mineral lessee, its agents, successors or assigns, shall not interfere with nor hinder the reasonable surface use by the Department of Natural Resources, its Offices or Commissions, as herein above reserved.

Applicant: BONURA ENERGY INVESTMENTS

Bidder	Cash Payment	Price/Acre	Rental	Oil	Gas	Other

Legend

- 06080026
- Blocks
- Active_Leases
- Counties



TRACT 38520 - Portion of Blocks 45, and 46, Breton Sound Area, Plaquemines Parish, Louisiana

All of the lands now or formerly constituting the beds and bottoms of all water bodies of every nature and description the title of which vests in the State of Louisiana, together with all islands arising therein and other lands formed by accretion or by reliction, where allowed by law, excepting tax adjudicated lands, and not presently under mineral lease and cross hatched on August 9, 2006, situated in Plaquemines Parish, Louisiana, and more particularly described as follows: Beginning at a point on the South line of Block 46, Breton Sound Area, having Coordinates of X = 2,672,225.00 and Y = 292,830.00; thence North 7,375.00 feet to a point having Coordinates of X = 2,672,225.00 and Y = 300,205.00; thence East 3,375.00 feet to a point having Coordinates of X = 2,675,600.00 and Y = 300,205.00; thence North 7,375.00 feet to a point on the North line of said Block 46 having Coordinates of X = 2,675,600.00 and Y = 307,580.00; thence East 4,000.00 feet on the North line of said Block 46 to its Northeast corner, also being the Northwest corner of Block 45 having Coordinates of X = 2,679,600.00 and Y = 307,580.00; thence East 2,000.00 feet along the North line of said Block 45 to the Northwest corner of State Lease No. 1237 having Coordinates of X = 2,681,600.00 and Y = 307,580.00; thence South 2,950.00 feet on the West line of said State Lease No. 1237 to its Southwest corner, also being the Northwest corner of State Lease No. 2001 having Coordinates of X = 2,681,600.00 and Y = 304,630.00; thence along the boundary of said State Lease No. 2001 the following courses: South 2,925.00 feet and East 6,025.35 feet to a point on the South line of said State Lease No. 2001 having Coordinates of X = 2,687,625.35 and Y = 301,705.00; thence Southwesterly on a straight line to a point having Coordinates of X = 2,687,610.00 and Y = 301,648.00; thence Southwesterly on a straight line to a point having Coordinates of X = 2,687,014.00 and Y = 300,054.00; thence Southwesterly on a straight line to a point having Coordinates of X = 2,685,058.00 and Y = 297,573.00; thence Southwesterly on a straight line to a point having Coordinates of X = 2,683,264.00 and Y = 296,069.00; thence Southwesterly on a straight line to the most Easterly Southeast corner of State Lease No. 17691 having Coordinates of X = 2,683,000.00 and Y = 295,941.54; thence along the boundary of said State Lease No. 17691 the following courses: North 20 degrees 26 minutes 18 seconds East 3,722.81 feet, North 58 degrees 10 minutes 21 seconds West 3,413.21 feet and West 1,800.00 feet to its Northwest corner, also being the Northeast corner of State Lease No. 17689 having Coordinates of X = 2,679,600.00 and Y = 301,230.00; thence along the boundary of said State Lease No. 17689 the following courses: North 89 degrees 45 minutes 24 seconds West 2,355.02 feet, South 33 degrees 14 minutes 29 seconds West 2,203.33 feet, South 29 degrees 48 minutes 52 seconds East 2,117.47 feet, East 2,190.00 feet, South 1,730.00 feet and East 320.00 feet to its Southeast corner, also being the Southwest corner of said State Lease No. 17691 having Coordinates of X = 2,679,600.00 and Y = 295,830.00; thence East 3,168.97 along the South line of said State Lease No. 17691 to its most Southerly Southeast corner having Coordinates of X = 2,682,768.97 and Y = 295,830.00; thence Southwesterly on a straight

line to a point having Coordinates of X = 2,680,880.00 and Y = 294,918.00; thence Southwesterly on a straight line to a point having Coordinates of X = 2,678,009.00 and Y = 294,303.00; thence Southeasterly on a straight line to a point on the South line of said Block 46 having Coordinates of X = 2,678,166.42 and Y = 292,830.00; thence West 5,941.42 feet along the South line of said Block 46 to the point of beginning, containing approximately **2,291.61 acres**, all as more particularly outlined on a plat on file in the Office of Mineral Resources, Department of Natural Resources. All bearings, distances and coordinates are based on Louisiana Coordinate System of 1927, (North or South Zone), where applicable.

NOTE: The above description of the Tract nominated for lease has been provided and corrected, where required, exclusively by the nomination party. Any mineral lease selected from this Tract and awarded by the Louisiana State Mineral Board shall be without warranty of any kind, either express, implied, or statutory, including, but not limited to, the implied warranties of merchantability and fitness for a particular purpose. Should the mineral lease awarded by the Louisiana State Mineral Board be subsequently modified, cancelled or abrogated due to the existence of conflicting leases, operating agreements, private claims or other future obligations or conditions which may affect all or any portion of the leased Tract, it shall not relieve the Lessee of the obligation to pay any bonus due thereon to the Louisiana State Mineral Board, nor shall the Louisiana State Mineral Board be obligated to refund any consideration paid by the Lessor prior to such modification, cancellation, or abrogation, including, but not limited to, bonuses, rentals and royalties.

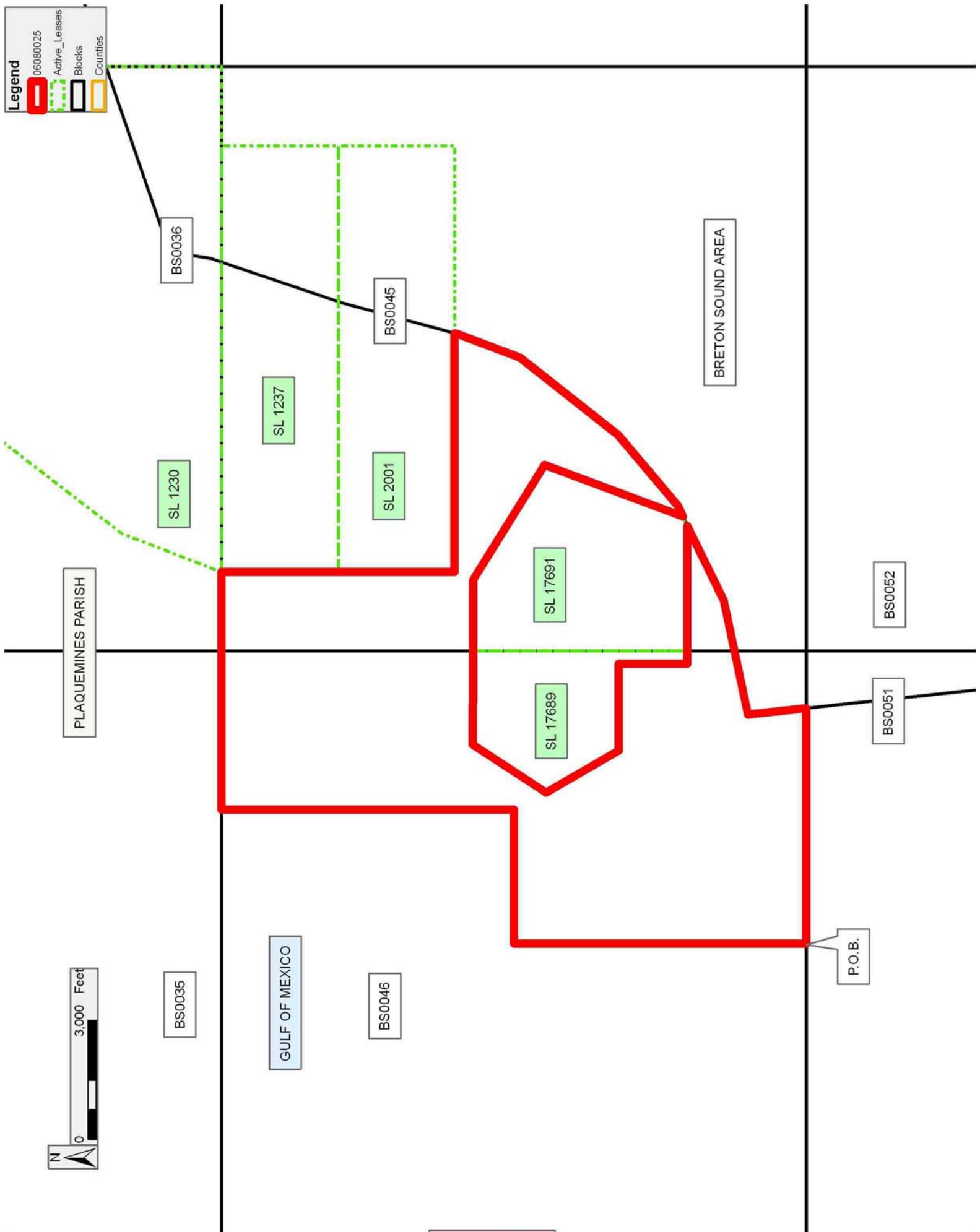
NOTE: The State of Louisiana does hereby reserve, and this lease shall be subject to, the imprescriptible right of surface use in the nature of a servitude in favor of the Department of Natural Resources, including its Offices and Commissions, for the sole purpose of implementing, constructing, servicing and maintaining approved coastal zone management and/or restoration projects. Utilization of any and all rights derived under this lease by the mineral lessee, its agents, successors or assigns, shall not interfere with nor hinder the reasonable surface use by the Department of Natural Resources, its Offices or Commissions, as herein above reserved.

Bidder	Cash Payment	Price/Acre	Rental	Oil	Gas	Other

Applicant: BONURA ENERGY INVESTMENTS

Legend

- 06080025
- Active_Leases
- Blocks
- Counties



TRACT 38521 - Portion of Block 48, Breton Sound Area, Plaquemines Parish, Louisiana

All of the lands now or formerly constituting the beds and bottoms of all water bodies of every nature and description the title of which vests in the State of Louisiana, together with all islands arising therein and other lands formed by accretion or by reliction, where allowed by law, excepting tax adjudicated lands, and not presently under mineral lease and cross hatched on August 9, 2006, situated in Plaquemines Parish, Louisiana, and more particularly described as follows: Beginning at a point on the North line of Block 48, Breton Sound Area, having Coordinates of X = 2,642,725.00 and Y = 307,580.00; thence South 14,750.00 feet to a point on the South line of said Block 48 having Coordinates of X = 2,642,725.00 and Y = 292,830.00; thence West 44.00 feet along the South line of said Block 48 to the Southeast corner of State Lease No. 17296 having Coordinates of X = 2,642,681.00 and Y = 292,830.00; thence along the boundary of said State Lease No. 17296 the following courses: North 1,080.00 feet, West 3,525.00 feet and South 1,080.00 feet to the Southwest corner of said State Lease No. 17296, also being a point on the South line of said Block 48 having Coordinates of X = 2,639,156.00 and Y = 292,830.00; thence West 520.00 feet along the South line of said Block 48 to the Southeast corner of State Lease No. 17295 having Coordinates of X = 2,638,636.00 and Y = 292,830.00; thence along the boundary of said State Lease No. 17295 the following courses: North 1,822.00 feet, West 2,485.00 feet and South 1,822.00 feet to the Southwest corner of said State Lease No. 17295, also being a point on the South line of said Block 48 having Coordinates of X = 2,636,151.00 and Y = 292,830.00; thence West 801.00 feet along the South line of said Block 48 to its Southwest corner having Coordinates of X = 2,635,350.00 and Y = 292,830.00; thence North 14,750.00 feet along the West line of said Block 48 to its Northwest corner having Coordinates of X = 2,635,350.00 and Y = 307,580.00; thence East 7,375.00 feet along the North line of said Block 48 to the point of beginning, containing approximately **2,305.94 acres**, all as more particularly outlined on a plat on file in the Office of Mineral Resources, Department of Natural Resources. All bearings, distances and coordinates are based on Louisiana Coordinate System of 1927, (North or South Zone), where applicable.

NOTE: The above description of the Tract nominated for lease has been provided and corrected, where required, exclusively by the nomination party. Any mineral lease selected from this Tract and awarded by the Louisiana State Mineral Board shall be without warranty of any kind, either express, implied, or statutory, including, but not limited to, the implied warranties of merchantability and fitness for a particular purpose. Should the mineral lease awarded by the Louisiana State Mineral Board be subsequently modified, cancelled or abrogated due to the existence of conflicting leases, operating agreements, private claims or other future obligations or conditions which may affect all or any portion of the leased Tract, it shall not relieve the Lessee of the obligation to pay any bonus due thereon to the Louisiana State Mineral Board, nor shall

the Louisiana State Mineral Board be obligated to refund any consideration paid by the Lessor prior to such modification, cancellation, or abrogation, including, but not limited to, bonuses, rentals and royalties.

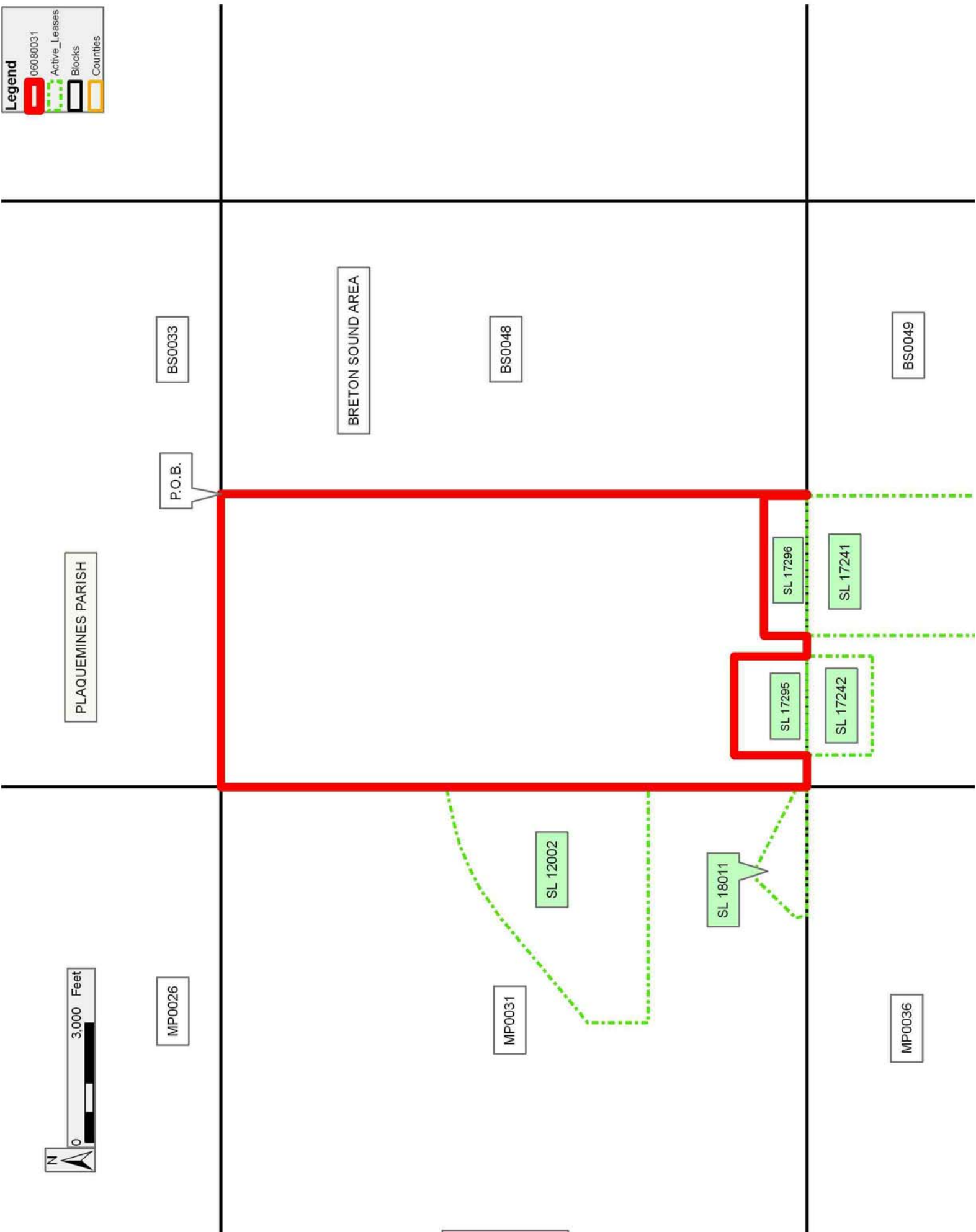
NOTE: The State of Louisiana does hereby reserve, and this lease shall be subject to, the imprescriptible right of surface use in the nature of a servitude in favor of the Department of Natural Resources, including its Offices and Commissions, for the sole purpose of implementing, constructing, servicing and maintaining approved coastal zone management and/or restoration projects. Utilization of any and all rights derived under this lease by the mineral lessee, its agents, successors or assigns, shall not interfere with nor hinder the reasonable surface use by the Department of Natural Resources, its Offices or Commissions, as herein above reserved.

Applicant: BONURA ENERGY INVESTMENTS

Bidder	Cash Payment	Price/Acre	Rental	Oil	Gas	Other

Legend

- 06080031
- Active_Leases
- Blocks
- Counties



TRACT 38522 - Portion of Block 48, Breton Sound Area, Plaquemines Parish, Louisiana

All of the lands now or formerly constituting the beds and bottoms of all water bodies of every nature and description the title of which vests in the State of Louisiana, together with all islands arising therein and other lands formed by accretion or by reliction, where allowed by law, excepting tax adjudicated lands, and not presently under mineral lease and cross hatched on August 9, 2006, situated in Plaquemines Parish, Louisiana, and more particularly described as follows: Beginning at a point on the North line of Block 48, Breton Sound Area, having Coordinates of X = 2,642,725.00 and Y = 307,580.00; thence East 5,485.00 feet along the North line of said Block 48 to the Northwest corner of State Lease No. 18080 having Coordinates of X = 2,648,210.00 and Y = 307,580.00; thence along the boundary of said State Lease No. 18080 the following courses: South 1,780.00 feet and East 1,890.00 feet to the Southeast corner of said State Lease No. 18080, also being a point on the East line of said Block 48 having Coordinates of X = 2,650,100.00 and Y = 305,800.00; thence South 12,970.00 feet along the East line of said Block 48 to its Southeast corner having Coordinates of X = 2,650,100.00 and Y = 292,830.00; thence West 7,375.00 feet along the South line of said Block 48 to a point having Coordinates of X = 2,642,725.00 and Y = 292,830.00; thence North 14,750.00 feet to the point of beginning, containing approximately **2,420.04 acres**, all as more particularly outlined on a plat on file in the Office of Mineral Resources, Department of Natural Resources. All bearings, distances and coordinates are based on Louisiana Coordinate System of 1927, (North or South Zone), where applicable.

NOTE: The above description of the Tract nominated for lease has been provided and corrected, where required, exclusively by the nomination party. Any mineral lease selected from this Tract and awarded by the Louisiana State Mineral Board shall be without warranty of any kind, either express, implied, or statutory, including, but not limited to, the implied warranties of merchantability and fitness for a particular purpose. Should the mineral lease awarded by the Louisiana State Mineral Board be subsequently modified, cancelled or abrogated due to the existence of conflicting leases, operating agreements, private claims or other future obligations or conditions which may affect all or any portion of the leased Tract, it shall not relieve the Lessee of the obligation to pay any bonus due thereon to the Louisiana State Mineral Board, nor shall the Louisiana State Mineral Board be obligated to refund any consideration paid by the Lessor prior to such modification, cancellation, or abrogation, including, but not limited to, bonuses, rentals and royalties.





NOTE: The State of Louisiana does hereby reserve, and this lease shall be subject to, the imprescriptible right of surface use in the nature of a servitude in favor of the Department of Natural Resources, including its Offices and Commissions, for the sole purpose of implementing, constructing, servicing and maintaining approved coastal zone management and/or restoration projects. Utilization of any and all rights derived

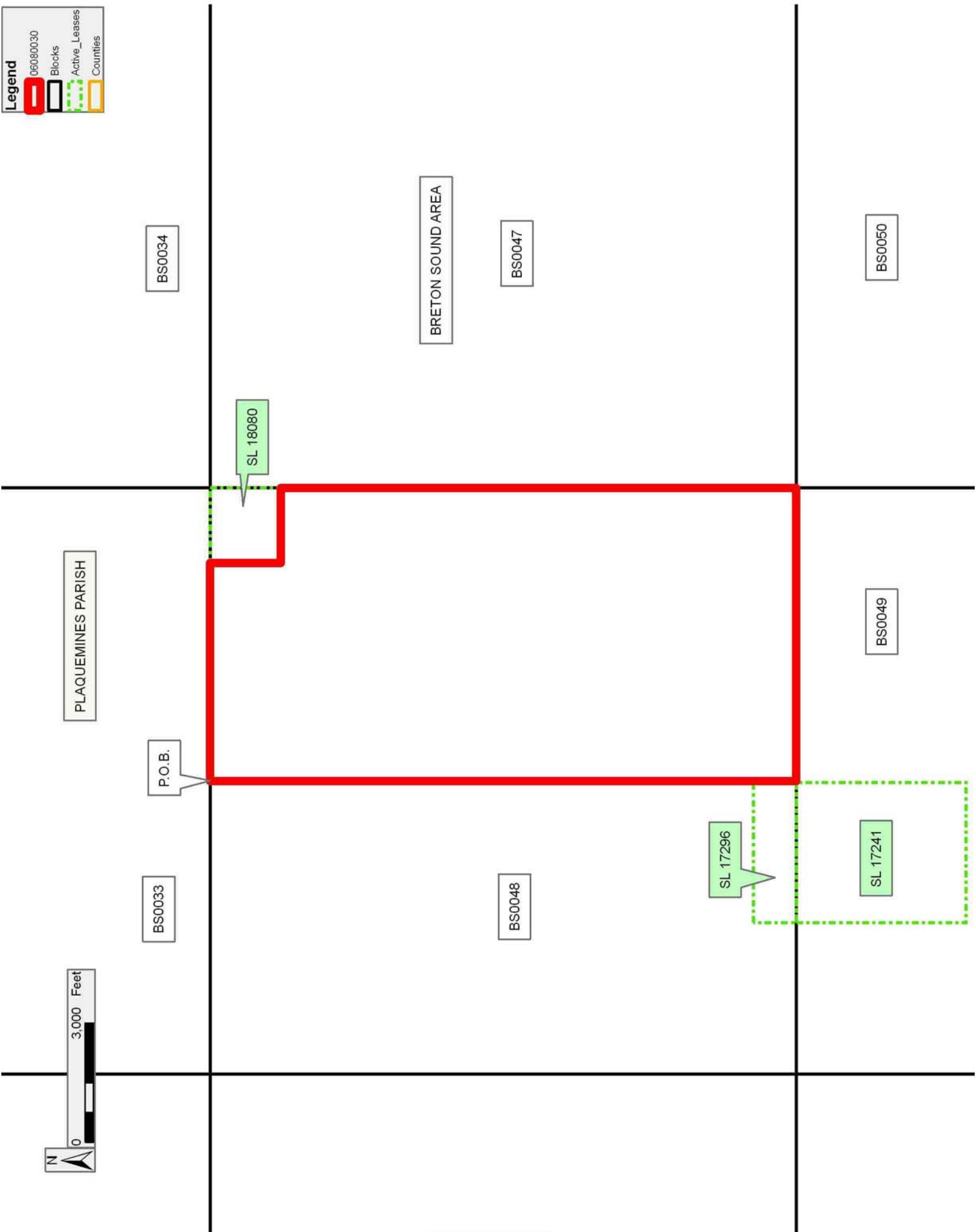
under this lease by the mineral lessee, its agents, successors or assigns, shall not interfere with nor hinder the reasonable surface use by the Department of Natural Resources, its Offices or Commissions, as herein above reserved.

Applicant: BONURA ENERGY INVESTMENTS

Bidder	Cash Payment	Price/Acre	Rental	Oil	Gas	Other

Legend

-  06080030
-  Blocks
-  Active_Leases
-  Counties



TRACT 38523 - Portion of Block 47, Breton Sound Area, Plaquemines Parish, Louisiana

All of the lands now or formerly constituting the beds and bottoms of all water bodies of every nature and description the title of which vests in the State of Louisiana, together with all islands arising therein and other lands formed by accretion or by reliction, where allowed by law, excepting tax adjudicated lands, and not presently under mineral lease and cross hatched on August 9, 2006, situated in Plaquemines Parish, Louisiana, and more particularly described as follows: Beginning at a point on the East line of Block 47, Breton Sound Area, having Coordinates of X = 2,664,850.00 and Y = 300,205.00; thence South 925.00 feet along the East line of said Block 47 to the Eastern most Northeast corner of State Lease No. 16569, as amended, having Coordinates of X = 2,664,850.00 and Y = 299,280.00; thence along the boundary of said State Lease No. 16569 the following courses: North 75 degrees 24 minutes 12 seconds West 1,560.09 feet, South 50 degrees 54 minutes 23 seconds West 4,448.56 feet, South 63 degrees 19 minutes 35 seconds East 3,203.23 feet, East 1,040.01 feet and North 23 degrees 40 minutes 37 seconds East 2,639.57 feet to a point on the East line of said Block 47, also being the Eastern most Southeast corner of said State Lease No. 16569 having Coordinates of X = 2,664,850.00 and Y = 297,847.38; thence South 5,017.38 feet along the East line of said Block 47 to its Southeast corner having Coordinates of X = 2,664,850.00 and Y = 292,830.00; thence West 14,750.00 feet along the South line of said Block 47 to its Southwest corner having Coordinates of X = 2,650,100.00 and Y = 292,830.00; thence North 7,375.00 feet along the West line of said Block 47 to a point having Coordinates of X = 2,650,100.00 and Y = 300,205.00; thence East 8,664.74 feet to a point on the boundary of said State Lease No. 16569 having Coordinates of X = 2,658,764.74 and Y = 300,205.00; thence along the boundary of said State Lease No. 16569 the following courses: South 56 degrees 27 minutes 32 seconds West 1,547.40 feet, South 1,270.01 feet, South 63 degrees 19 minutes 34 seconds East 1,204.00 feet, North 59 degrees 36 minutes 34 seconds East 3,532.92 feet, North 800.00 feet and North 75 degrees 24 minutes 12 seconds West 310.38 feet to a point on the boundary of said State Lease No. 16569 having Coordinates of X = 2,661,298.00 and Y = 300,205.00; thence East 3,552.00 feet to the point of beginning, containing approximately **2,038.34 acres**, all as more particularly outlined on a plat on file in the Office of Mineral Resources, Department of Natural Resources. All bearings, distances and coordinates are based on Louisiana Coordinate System of 1927, (North or South Zone), where applicable.

NOTE: The above description of the Tract nominated for lease has been provided and corrected, where required, exclusively by the nomination party. Any mineral lease selected from this Tract and awarded by the Louisiana State Mineral Board shall be without warranty of any kind, either express, implied, or statutory, including, but not limited to, the implied warranties of merchantability and fitness for a particular purpose. Should the mineral lease awarded by the Louisiana State Mineral

Board be subsequently modified, cancelled or abrogated due to the existence of conflicting leases, operating agreements, private claims or other future obligations or conditions which may affect all or any portion of the leased Tract, it shall not relieve the Lessee of the obligation to pay any bonus due thereon to the Louisiana State Mineral Board, nor shall the Louisiana State Mineral Board be obligated to refund any consideration paid by the Lessor prior to such modification, cancellation, or abrogation, including, but not limited to, bonuses, rentals and royalties.

NOTE: The State of Louisiana does hereby reserve, and this lease shall be subject to, the imprescriptible right of surface use in the nature of a servitude in favor of the Department of Natural Resources, including its Offices and Commissions, for the sole purpose of implementing, constructing, servicing and maintaining approved coastal zone management and/or restoration projects. Utilization of any and all rights derived under this lease by the mineral lessee, its agents, successors or assigns, shall not interfere with nor hinder the reasonable surface use by the Department of Natural Resources, its Offices or Commissions, as herein above reserved.

Applicant: BONURA ENERGY INVESTMENTS

Bidder	Cash Payment	Price/Acre	Rental	Oil	Gas	Other

Legend

- 06080029
- Active_Leases
- Blocks
- Counties

