

TRACT 38504 - Portion of Block 73, Chandeleur Sound Area, St. Bernard Parish, Louisiana

All of the lands now or formerly constituting the beds and bottoms of all water bodies of every nature and description the title of which vests in the State of Louisiana, together with all islands arising therein and other lands formed by accretion or by reliction, where allowed by law, excepting tax adjudicated lands, and not presently under mineral lease and cross hatched on August 9, 2006, situated in St. Bernard Parish, Louisiana, and more particularly described as follows: Beginning at a point having Coordinates of X = 2,560,856.00 and Y = 382,441.00; thence North 6,792.00 feet to a point having Coordinates of X = 2,560,856.00 and Y = 389,233.00; thence East 13,862.00 feet to the Southwest corner of State Lease No. 18465 having Coordinates of X = 2,574,718.00 and Y = 389,233.00; thence East 4,030.00 feet along the South line of said State Lease No. 18465 to a point having Coordinates of X = 2,578,748.00 and Y = 389,233.00; thence South 6,792.00 feet to a point having Coordinates of X = 2,578,748.00 and Y = 382,441.00; thence West 17,892.00 feet to the point of beginning, containing approximately **2,500 acres**, all as more particularly outlined on a plat on file in the Office of Mineral Resources, Department of Natural Resources. All bearings, distances and coordinates are based on Louisiana Coordinate System of 1927, (North or South Zone), where applicable.

NOTE: The above description of the Tract nominated for lease has been provided and corrected, where required, exclusively by the nomination party. Any mineral lease selected from this Tract and awarded by the Louisiana State Mineral Board shall be without warranty of any kind, either express, implied, or statutory, including, but not limited to, the implied warranties of merchantability and fitness for a particular purpose. Should the mineral lease awarded by the Louisiana State Mineral Board be subsequently modified, cancelled or abrogated due to the existence of conflicting leases, operating agreements, private claims or other future obligations or conditions which may affect all or any portion of the leased Tract, it shall not relieve the Lessee of the obligation to pay any bonus due thereon to the Louisiana State Mineral Board, nor shall the Louisiana State Mineral Board be obligated to refund any consideration paid by the Lessor prior to such modification, cancellation, or abrogation, including, but not limited to, bonuses, rentals and royalties.





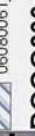
NOTE: The State of Louisiana does hereby reserve, and this lease shall be subject to, the imprescriptible right of surface use in the nature of a servitude in favor of the Department of Natural Resources, including its Offices and Commissions, for the sole purpose of implementing, constructing, servicing and maintaining approved coastal zone management and/or restoration projects. Utilization of any and all rights derived under this lease by the mineral lessee, its agents, successors or assigns, shall not interfere with nor hinder the reasonable surface use by the Department of Natural Resources, its Offices or Commissions, as herein above reserved.

NOTE: The Department of Wildlife and Fisheries has designated certain areas in the coastal waters of the State of Louisiana as Oyster Seed Bed Areas. The exact location of those Seed Bed Areas must be obtained from the Department of Wildlife and Fisheries and any work done under a mineral lease from the State of Louisiana may necessarily be conducted in conformity with the rules and regulations promulgated by the said Department of Wildlife and Fisheries for Oyster Seed Bed Areas.

Applicant: KARE-SUE ENERGY, INC.

Bidder	Cash Payment	Price/Acre	Rental	Oil	Gas	Other

Legend

-  060800061
-  Blocks
-  Active_Leases
-  Counties
-  060800061_06_08_06

DOQQ2004

CHANDELEUR SOUND AREA

CS00073

LAKE MACHIAS

MP00001

MAIN PASS AREA, REVISED

SL 18465



ST BERNARD PARISH

UNNAMED

LAKE COQUILLE

P.O.B.



TRACT 38505 - Plaquemines and St. Bernard Parishes, Louisiana

All of the lands now or formerly constituting the beds and bottoms of all water bodies of every nature and description the title of which vests in the State of Louisiana, together with all islands arising therein and other lands formed by accretion or by reliction, where allowed by law, excepting tax adjudicated lands, and not presently under mineral lease and cross hatched on August 9, 2006, situated in Plaquemines and St. Bernard Parishes, Louisiana, and more particularly described as follows: Beginning at a point having Coordinates of X = 2,542,964.00 and Y = 382,441.00; thence West 16,273.00 feet to a point having Coordinates of X = 2,526,691.00 and Y = 382,441.00; thence North 6,792.00 feet to a point having Coordinates of X = 2,526,691.00 and Y = 389,233.00; thence East 16,273.00 feet to a point having Coordinates of X = 2,542,964.00 and Y = 389,233.00; thence South 6,792.00 feet to the point of beginning, containing approximately **1,512 acres**, all as more particularly outlined on a plat on file in the Office of Mineral Resources, Department of Natural Resources. All bearings, distances and coordinates are based on Louisiana Coordinate System of 1927, (North or South Zone), where applicable.

NOTE: The above description of the Tract nominated for lease has been provided and corrected, where required, exclusively by the nomination party. Any mineral lease selected from this Tract and awarded by the Louisiana State Mineral Board shall be without warranty of any kind, either express, implied, or statutory, including, but not limited to, the implied warranties of merchantability and fitness for a particular purpose. Should the mineral lease awarded by the Louisiana State Mineral Board be subsequently modified, cancelled or abrogated due to the existence of conflicting leases, operating agreements, private claims or other future obligations or conditions which may affect all or any portion of the leased Tract, it shall not relieve the Lessee of the obligation to pay any bonus due thereon to the Louisiana State Mineral Board, nor shall the Louisiana State Mineral Board be obligated to refund any consideration paid by the Lessor prior to such modification, cancellation, or abrogation, including, but not limited to, bonuses, rentals and royalties.

NOTE: The State of Louisiana does hereby reserve, and this lease shall be subject to, the imprescriptible right of surface use in the nature of a servitude in favor of the Department of Natural Resources, including its Offices and Commissions, for the sole purpose of implementing, constructing, servicing and maintaining approved coastal zone management and/or restoration projects. Utilization of any and all rights derived under this lease by the mineral lessee, its agents, successors or assigns, shall not interfere with nor hinder the reasonable surface use by the Department of Natural Resources, its Offices or Commissions, as herein above reserved.

NOTE: The Department of Wildlife and Fisheries has designated certain areas in the coastal waters of the State of Louisiana as Oyster Seed Bed Areas. The exact location of those Seed Bed Areas must be obtained from

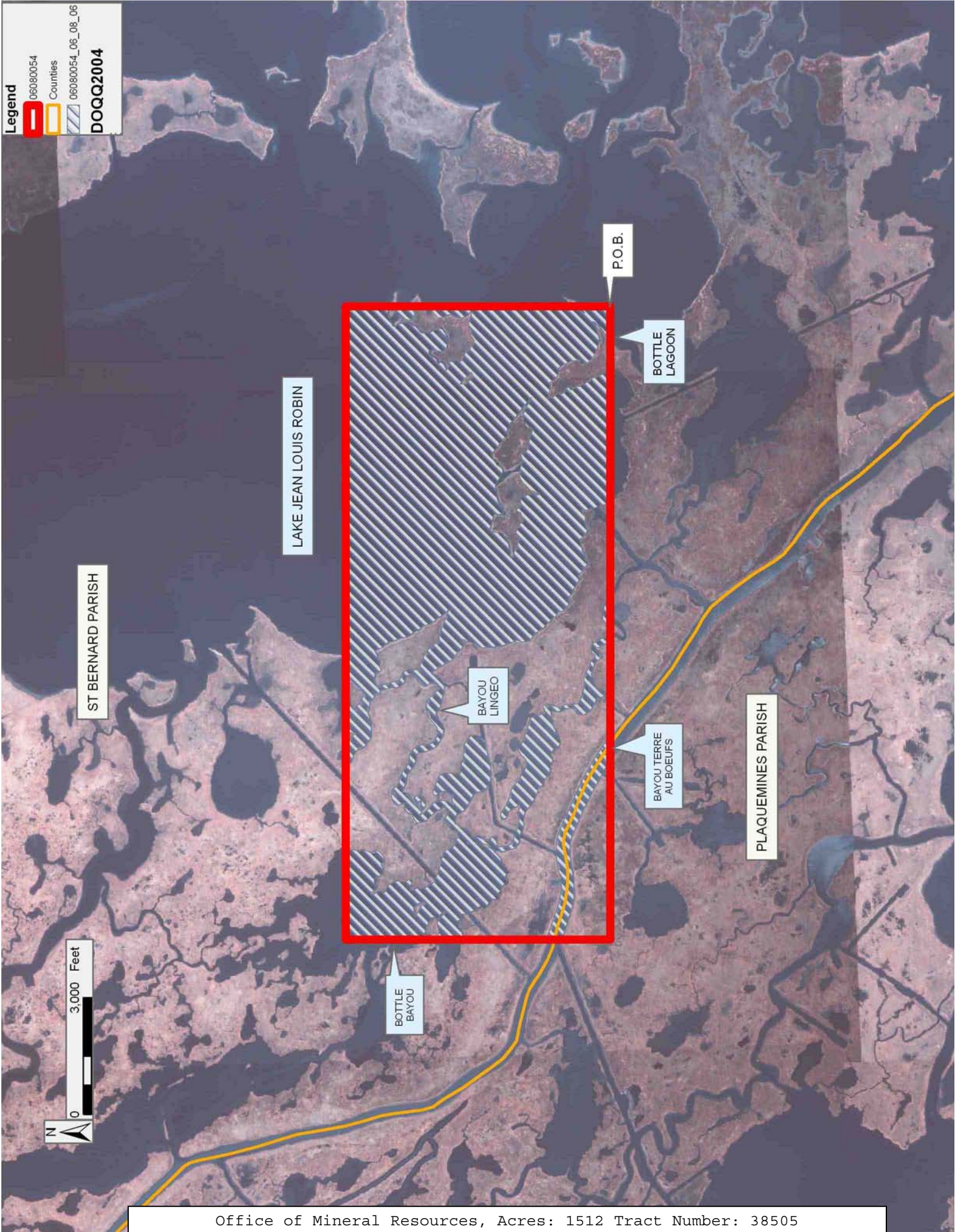
the Department of Wildlife and Fisheries and any work done under a mineral lease from the State of Louisiana may necessarily be conducted in conformity with the rules and regulations promulgated by the said Department of Wildlife and Fisheries for Oyster Seed Bed Areas.

Applicant: KARE-SUE ENERGY, INC.

Bidder	Cash Payment	Price/Acre	Rental	Oil	Gas	Other

Legend

- 06080054
- Counties
- 06080054_06_08_06
- DOQQ2004**



TRACT 38506 - St. Bernard Parish, Louisiana

All of the lands now or formerly constituting the beds and bottoms of all water bodies of every nature and description the title of which vests in the State of Louisiana, together with all islands arising therein and other lands formed by accretion or by reliction, where allowed by law, excepting tax adjudicated lands, and not presently under mineral lease and cross hatched on August 9, 2006, situated in St. Bernard Parish, Louisiana, and more particularly described as follows: Beginning at a point having Coordinates of X = 2,560,856.00 and Y = 382,441.00; thence West 17,892 feet to a point having Coordinates of X = 2,542,964.00 and Y = 382,441.00; thence North 6,792.00 feet to a point having Coordinates of X = 2,542,964.00 and Y = 389,233.00; thence East 1,017.31 feet to the Northwest corner of State Lease No. 18839 having Coordinates of X = 2,543,981.31 and Y = 389,233.00; thence along the boundary of said State Lease No. 18839 the following courses: South 02 degrees 10 minutes 41 seconds East 2,325.65 feet, North 87 degrees 51 minutes 18 seconds East 5,280.74 feet and North 02 degrees 11 minutes 10 seconds West 2,127.88 feet to its Northeast corner having Coordinates of X = 2,549,265.58 and Y = 389,233.00; thence East 11,590.42 feet to a point having Coordinates of X = 2,560,856.00 and Y = 389,233.00; thence South 6,792.00 feet the point of beginning, containing approximately **2,229 acres**, all as more particularly outlined on a plat on file in the Office of Mineral Resources, Department of Natural Resources. All bearings, distances and coordinates are based on Louisiana Coordinate System of 1927, (North or South Zone), where applicable.

NOTE: The above description of the Tract nominated for lease has been provided and corrected, where required, exclusively by the nomination party. Any mineral lease selected from this Tract and awarded by the Louisiana State Mineral Board shall be without warranty of any kind, either express, implied, or statutory, including, but not limited to, the implied warranties of merchantability and fitness for a particular purpose. Should the mineral lease awarded by the Louisiana State Mineral Board be subsequently modified, cancelled or abrogated due to the existence of conflicting leases, operating agreements, private claims or other future obligations or conditions which may affect all or any portion of the leased Tract, it shall not relieve the Lessee of the obligation to pay any bonus due thereon to the Louisiana State Mineral Board, nor shall the Louisiana State Mineral Board be obligated to refund any consideration paid by the Lessor prior to such modification, cancellation, or abrogation, including, but not limited to, bonuses, rentals and royalties.

NOTE: The State of Louisiana does hereby reserve, and this lease shall be subject to, the imprescriptible right of surface use in the nature of a servitude in favor of the Department of Natural Resources, including its Offices and Commissions, for the sole purpose of implementing, constructing, servicing and maintaining approved coastal zone management and/or restoration projects. Utilization of any and all rights derived under this lease by the mineral lessee, its agents, successors or assigns,

shall not interfere with nor hinder the reasonable surface use by the Department of Natural Resources, its Offices or Commissions, as herein above reserved.

NOTE: The Department of Wildlife and Fisheries has designated certain areas in the coastal waters of the State of Louisiana as Oyster Seed Bed Areas. The exact location of those Seed Bed Areas must be obtained from the Department of Wildlife and Fisheries and any work done under a mineral lease from the State of Louisiana may necessarily be conducted in conformity with the rules and regulations promulgated by the said Department of Wildlife and Fisheries for Oyster Seed Bed Areas.

Applicant: KARE-SUE ENERGY, INC.

Bidder	Cash Payment	Price/Acre	Rental	Oil	Gas	Other

Legend

- 060800063
- Active_Leases
- Counties
- 060800063_06_06_06
- DOQQ2004**



ST BERNARD PARISH

SL 18838

LAKE COQUILLE

SL 18839

UNNAMED

P.O.B.

LAKE JEAN
LOUIS ROBIN

TRACT 38507 - St. Bernard Parish, Louisiana

All of the lands now or formerly constituting the beds and bottoms of all water bodies of every nature and description the title of which vests in the State of Louisiana, together with all islands arising therein and other lands formed by accretion or by reliction, where allowed by law, excepting tax adjudicated lands, and not presently under mineral lease and cross hatched on August 9, 2006, situated in St. Bernard Parish, Louisiana, and more particularly described as follows: Beginning at a point having Coordinates of X = 2,560,856.00 and Y = 382,441.00; thence South 8,327.00 feet to a point having Coordinates of X = 2,560,856.00 and Y = 374,114.00; thence West 17,892.00 feet to a point having Coordinates of X = 2,542,964.00 and Y = 374,114.00; thence North 8,327.00 feet to a point having Coordinates of X = 2,542,964.00 and Y = 382,441.00; thence East 17,892.00 feet to the point of beginning, containing approximately **2,420 acres**, all as more particularly outlined on a plat on file in the Office of Mineral Resources, Department of Natural Resources. All bearings, distances and coordinates are based on Louisiana Coordinate System of 1927, (North or South Zone), where applicable.

NOTE: The above description of the Tract nominated for lease has been provided and corrected, where required, exclusively by the nomination party. Any mineral lease selected from this Tract and awarded by the Louisiana State Mineral Board shall be without warranty of any kind, either express, implied, or statutory, including, but not limited to, the implied warranties of merchantability and fitness for a particular purpose. Should the mineral lease awarded by the Louisiana State Mineral Board be subsequently modified, cancelled or abrogated due to the existence of conflicting leases, operating agreements, private claims or other future obligations or conditions which may affect all or any portion of the leased Tract, it shall not relieve the Lessee of the obligation to pay any bonus due thereon to the Louisiana State Mineral Board, nor shall the Louisiana State Mineral Board be obligated to refund any consideration paid by the Lessor prior to such modification, cancellation, or abrogation, including, but not limited to, bonuses, rentals and royalties.

NOTE: The State of Louisiana does hereby reserve, and this lease shall be subject to, the imprescriptible right of surface use in the nature of a servitude in favor of the Department of Natural Resources, including its Offices and Commissions, for the sole purpose of implementing, constructing, servicing and maintaining approved coastal zone management and/or restoration projects. Utilization of any and all rights derived under this lease by the mineral lessee, its agents, successors or assigns, shall not interfere with nor hinder the reasonable surface use by the Department of Natural Resources, its Offices or Commissions, as herein above reserved.

NOTE: The Department of Wildlife and Fisheries has designated certain areas in the coastal waters of the State of Louisiana as Oyster Seed Bed Areas. The exact location of those Seed Bed Areas must be obtained from

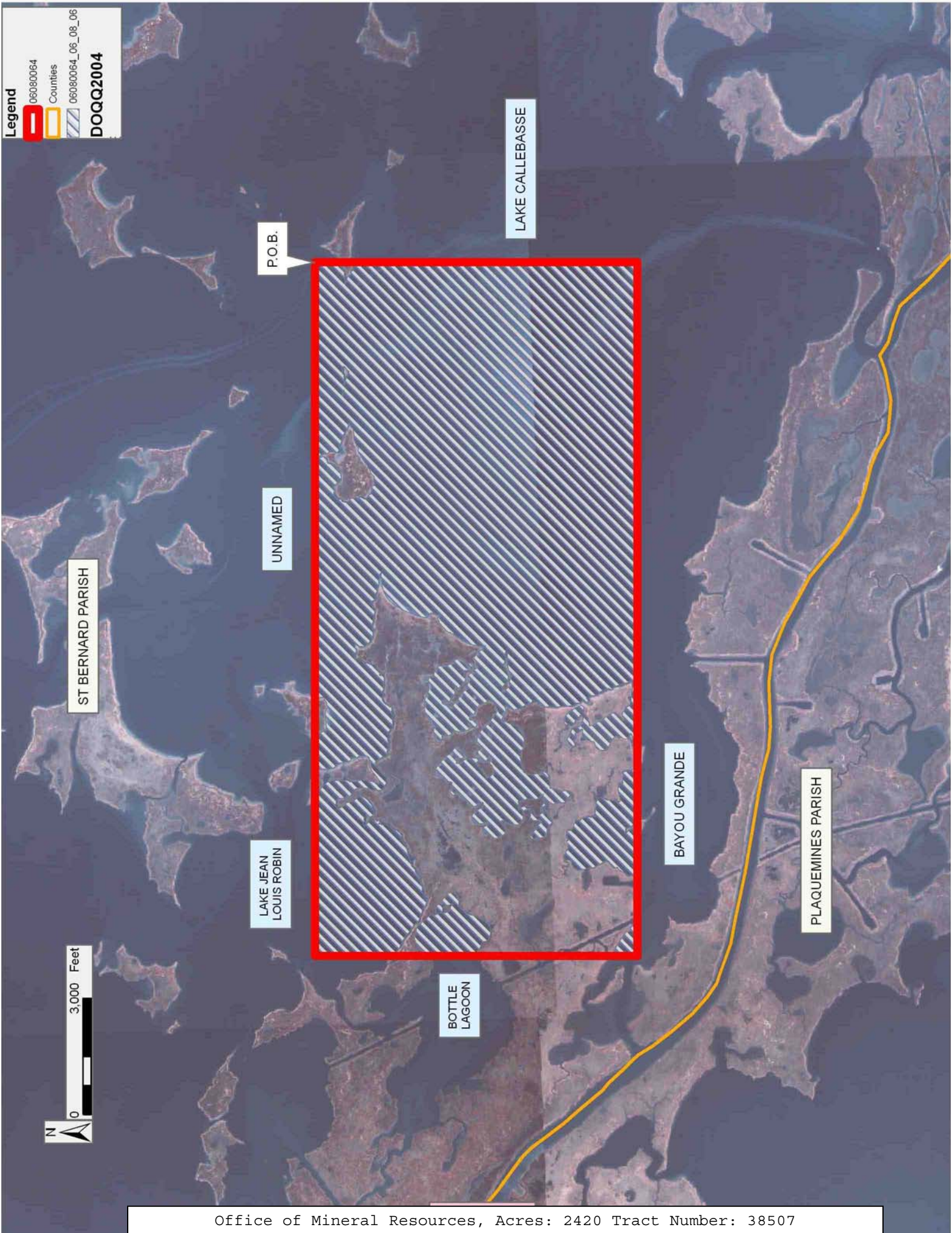
the Department of Wildlife and Fisheries and any work done under a mineral lease from the State of Louisiana may necessarily be conducted in conformity with the rules and regulations promulgated by the said Department of Wildlife and Fisheries for Oyster Seed Bed Areas.

Applicant: KARE-SUE ENERGY, INC.

Bidder	Cash Payment	Price/Acre	Rental	Oil	Gas	Other

Legend

- 060800064
- Counties
- 060800064_06_08_06
- DOQQ2004**



TRACT 38508 - Portion of Block 73, Chandeleur Sound Area, and Block 1, Main Pass Area, Revised, St. Bernard Parish, Louisiana

All of the lands now or formerly constituting the beds and bottoms of all water bodies of every nature and description the title of which vests in the State of Louisiana, together with all islands arising therein and other lands formed by accretion or by reliction, where allowed by law, excepting tax adjudicated lands, and not presently under mineral lease and cross hatched on August 9, 2006, situated in St. Bernard Parish, Louisiana, and more particularly described as follows: Beginning at a point having Coordinates of X = 2,560,856.00 and Y = 382,441.00; thence East 17,892.00 feet to a point having Coordinates of X = 2,578,748.00 and Y = 382,441.00; thence South 8,327.00 feet to a point having Coordinates of X = 2,578,748.00 and Y = 374,114.00; thence West 17,892.00 feet to a point having Coordinates of X = 2,560,856.00 and Y = 374,114.00; thence North 8,327.00 feet to the point of beginning, **LESS AND EXCEPT** those portions of State Lease No. 17919 and State Lease No. 18466 that lie within the above described tract, more particularly described as follows: Beginning at the Northwest corner of State Lease No. 18466 having Coordinates of X = 2,561,133.13 and Y = 380,821.50; thence along the boundary of said State Lease No. 18466 the following courses: East 5,168.37 feet, South 4,590.24 feet and South 88 degrees 04 minutes 33 seconds West 807.33 feet to a corner also being the Southeast corner of State Lease No. 17919 having Coordinates of X = 2,565,494.63 and Y = 376,204.15; thence along the boundary of said State Lease No. 17919 the following courses: South 88 degrees 04 minutes 33 seconds West 4,204.00 feet and North 01 degrees 55 minutes 27 seconds West 4,224.52 feet to its Northwest corner also being the Northernmost Southwest corner of said State Lease No. 18466 having Coordinates of X = 2,561,151.16 and Y = 380,285.14; thence North 01 degrees 55 minutes 31 seconds West 536.66 feet along the West line of said State Lease No. 18466 to the point of beginning, containing approximately **2,198 acres**, all as more particularly outlined on a plat on file in the Office of Mineral Resources, Department of Natural Resources. All bearings, distances and coordinates are based on Louisiana Coordinate System of 1927, (North or South Zone), where applicable.

NOTE: The above description of the Tract nominated for lease has been provided and corrected, where required, exclusively by the nomination party. Any mineral lease selected from this Tract and awarded by the Louisiana State Mineral Board shall be without warranty of any kind, either express, implied, or statutory, including, but not limited to, the implied warranties of merchantability and fitness for a particular purpose. Should the mineral lease awarded by the Louisiana State Mineral Board be subsequently modified, cancelled or abrogated due to the existence of conflicting leases, operating agreements, private claims or other future obligations or conditions which may affect all or any portion of the leased Tract, it shall not relieve the Lessee of the obligation to pay any bonus due thereon to the Louisiana State Mineral Board, nor shall the Louisiana State Mineral Board be obligated to refund any consideration

paid by the Lessor prior to such modification, cancellation, or abrogation, including, but not limited to, bonuses, rentals and royalties.

NOTE: The State of Louisiana does hereby reserve, and this lease shall be subject to, the imprescriptible right of surface use in the nature of a servitude in favor of the Department of Natural Resources, including its Offices and Commissions, for the sole purpose of implementing, constructing, servicing and maintaining approved coastal zone management and/or restoration projects. Utilization of any and all rights derived under this lease by the mineral lessee, its agents, successors or assigns, shall not interfere with nor hinder the reasonable surface use by the Department of Natural Resources, its Offices or Commissions, as herein above reserved.

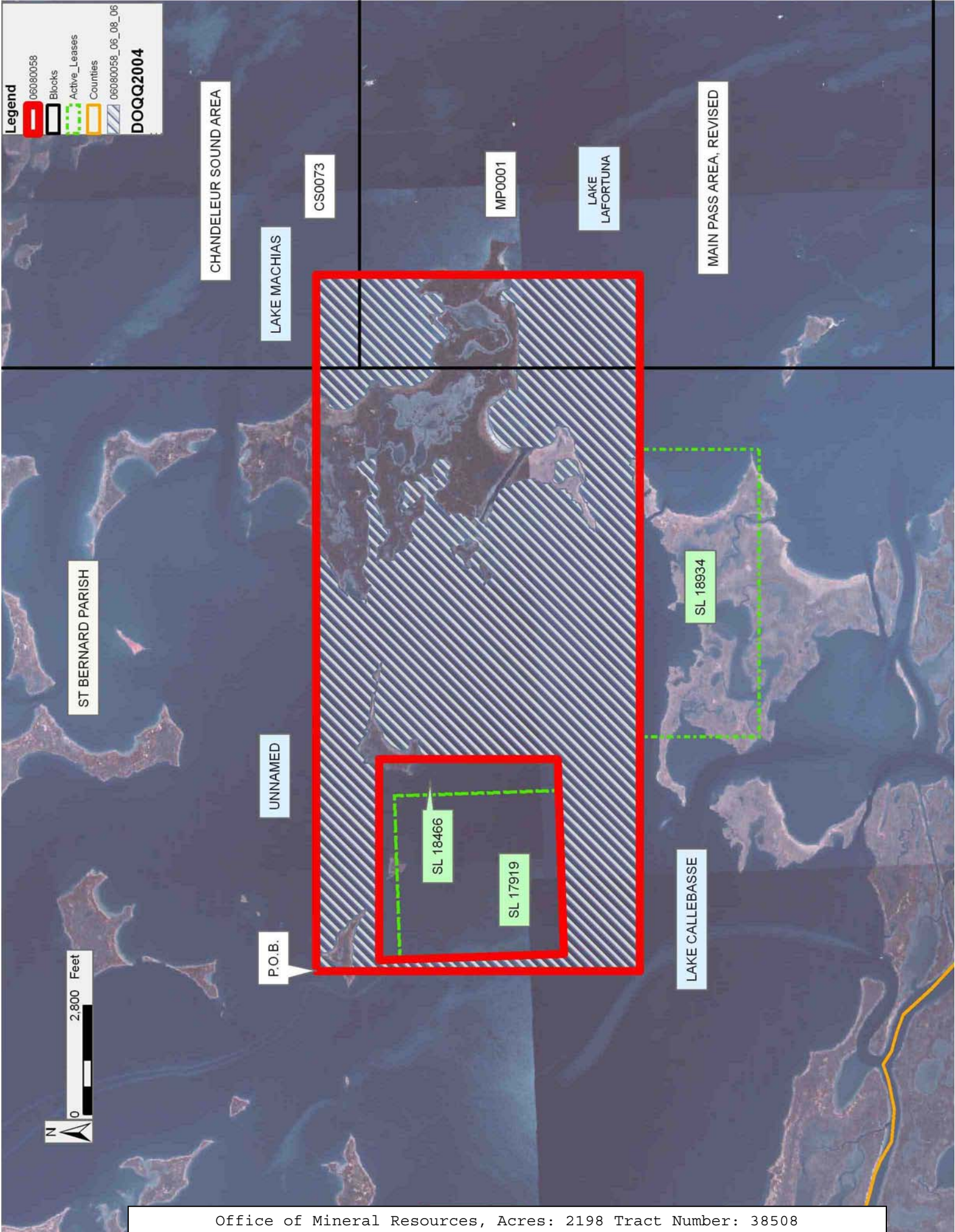
NOTE: The Department of Wildlife and Fisheries has designated certain areas in the coastal waters of the State of Louisiana as Oyster Seed Bed Areas. The exact location of those Seed Bed Areas must be obtained from the Department of Wildlife and Fisheries and any work done under a mineral lease from the State of Louisiana may necessarily be conducted in conformity with the rules and regulations promulgated by the said Department of Wildlife and Fisheries for Oyster Seed Bed Areas.

Applicant: KARE-SUE ENERGY, INC.

Bidder	Cash Payment	Price/Acre	Rental	Oil	Gas	Other

Legend

- 06080058
- Blocks
- Active_Leases
- Counties
- 06080058_06_08_06
- DOQQ2004**



TRACT 38509 - Plaquemines and St. Bernard Parishes, Louisiana

All of the lands now or formerly constituting the beds and bottoms of all water bodies of every nature and description the title of which vests in the State of Louisiana, together with all islands arising therein and other lands formed by accretion or by reliction, where allowed by law, excepting tax adjudicated lands, and not presently under mineral lease and cross hatched on August 9, 2006, situated in Plaquemines and St. Bernard Parishes, Louisiana, and more particularly described as follows: Beginning at a point having Coordinates of X = 2,542,964.00 and Y = 382,441.00; thence South 8,327.00 feet to a point having Coordinates of X = 2,542,964.00 and Y = 374,114.00; thence West 16,273.00 feet to a point having Coordinates of X = 2,526,691.00 and Y = 374,114.00; thence North 8,327.00 feet to a point having Coordinates of X = 2,526,691.00 and Y = 382,441.00; thence East 16,273.00 feet to the point of beginning, containing approximately **682 acres**, all as more particularly outlined on a plat on file in the Office of Mineral Resources, Department of Natural Resources. All bearings, distances and coordinates are based on Louisiana Coordinate System of 1927, (North or South Zone), where applicable.

NOTE: The above description of the Tract nominated for lease has been provided and corrected, where required, exclusively by the nomination party. Any mineral lease selected from this Tract and awarded by the Louisiana State Mineral Board shall be without warranty of any kind, either express, implied, or statutory, including, but not limited to, the implied warranties of merchantability and fitness for a particular purpose. Should the mineral lease awarded by the Louisiana State Mineral Board be subsequently modified, cancelled or abrogated due to the existence of conflicting leases, operating agreements, private claims or other future obligations or conditions which may affect all or any portion of the leased Tract, it shall not relieve the Lessee of the obligation to pay any bonus due thereon to the Louisiana State Mineral Board, nor shall the Louisiana State Mineral Board be obligated to refund any consideration paid by the Lessor prior to such modification, cancellation, or abrogation, including, but not limited to, bonuses, rentals and royalties.

NOTE: The State of Louisiana does hereby reserve, and this lease shall be subject to, the imprescriptible right of surface use in the nature of a servitude in favor of the Department of Natural Resources, including its Offices and Commissions, for the sole purpose of implementing, constructing, servicing and maintaining approved coastal zone management and/or restoration projects. Utilization of any and all rights derived under this lease by the mineral lessee, its agents, successors or assigns, shall not interfere with nor hinder the reasonable surface use by the Department of Natural Resources, its Offices or Commissions, as herein above reserved.

NOTE: The Department of Wildlife and Fisheries has designated certain areas in the coastal waters of the State of Louisiana as Oyster Seed Bed Areas. The exact location of those Seed Bed Areas must be obtained from

the Department of Wildlife and Fisheries and any work done under a mineral lease from the State of Louisiana may necessarily be conducted in conformity with the rules and regulations promulgated by the said Department of Wildlife and Fisheries for Oyster Seed Bed Areas.

Applicant: KARE-SUE ENERGY, INC.

Bidder	Cash Payment	Price/Acre	Rental	Oil	Gas	Other

Legend

- 06080059
- Counties
- 06080059_06_08_06
- DOQQ2004**



TRACT 38510 - Plaquemines Parish, Louisiana

All lands, including lands now or formerly constituting the beds and bottoms of all water bodies of every nature and description, owned by and not presently under mineral lease as of August 9, 2006 from the State of Louisiana, situated in Plaquemines Parish, Louisiana, and being more fully described as follows: Part of Section 6, Township 16 South, Range 16 East, St. Helena Meridian, East of the Mississippi River, South of Bayou Terre Aux Boeuf, containing approximately **20 acres**, all as more particularly outlined on a plat on file in the Office of Mineral Resources, Department of Natural Resources. All bearings, distances and coordinates are based on Louisiana Coordinate System of 1927, (North or South Zone), where applicable.

NOTE: The above description of the Tract nominated for lease has been provided and corrected, where required, exclusively by the nomination party. Any mineral lease selected from this Tract and awarded by the Louisiana State Mineral Board shall be without warranty of any kind, either express, implied, or statutory, including, but not limited to, the implied warranties of merchantability and fitness for a particular purpose. Should the mineral lease awarded by the Louisiana State Mineral Board be subsequently modified, cancelled or abrogated due to the existence of conflicting leases, operating agreements, private claims or other future obligations or conditions which may affect all or any portion of the leased Tract, it shall not relieve the Lessee of the obligation to pay any bonus due thereon to the Louisiana State Mineral Board, nor shall the Louisiana State Mineral Board be obligated to refund any consideration paid by the Lessor prior to such modification, cancellation, or abrogation, including, but not limited to, bonuses, rentals and royalties.

NOTE: The State of Louisiana does hereby reserve, and this lease shall be subject to, the imprescriptible right of surface use in the nature of a servitude in favor of the Department of Natural Resources, including its Offices and Commissions, for the sole purpose of implementing, constructing, servicing and maintaining approved coastal zone management and/or restoration projects. Utilization of any and all rights derived under this lease by the mineral lessee, its agents, successors or assigns, shall not interfere with nor hinder the reasonable surface use by the Department of Natural Resources, its Offices or Commissions, as herein above reserved.

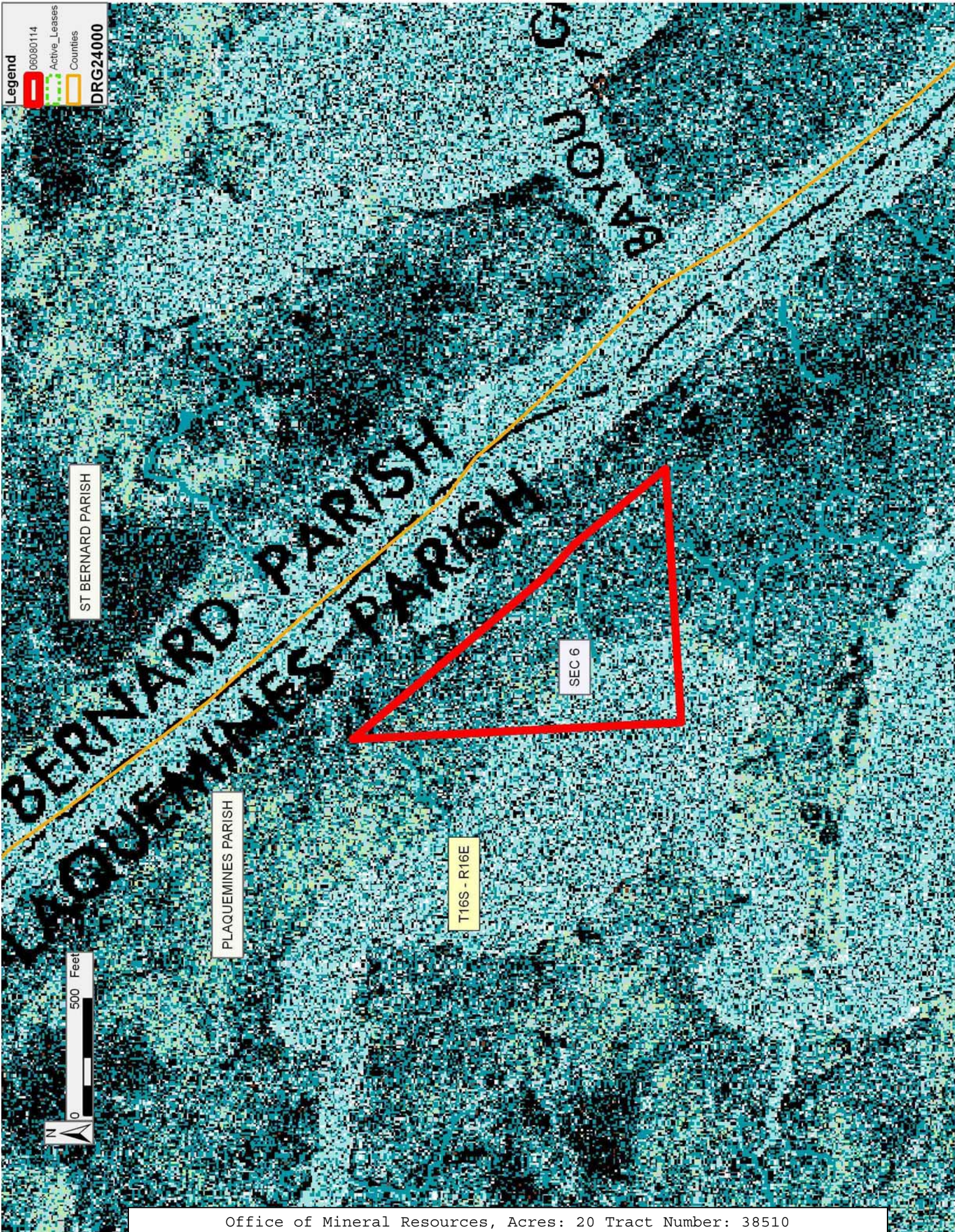
NOTE: The Department of Wildlife and Fisheries has designated certain areas in the coastal waters of the State of Louisiana as Oyster Seed Bed Areas. The exact location of those Seed Bed Areas must be obtained from the Department of Wildlife and Fisheries and any work done under a mineral lease from the State of Louisiana may necessarily be conducted in conformity with the rules and regulations promulgated by the said Department of Wildlife and Fisheries for Oyster Seed Bed Areas.

Applicant: KARE-SUE ENERGY, INC.

Bidder	Cash Payment	Price/Acre	Rental	Oil	Gas	Other

Legend

- 06080114
- Active_Leases
- Counties
- DRG24000

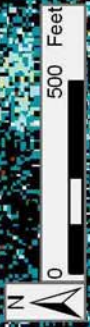


ST BERNARD PARISH

PLAQUEMINES PARISH

T16S - R16E

SEC 6



TRACT 38511 - Portion of Block 27, Breton Sound Area, Plaquemines Parish, Louisiana

All of the lands now or formerly constituting the beds and bottoms of all water bodies of every nature and description the title of which vests in the State of Louisiana, together with all islands arising therein and other lands formed by accretion or by reliction, where allowed by law, excepting tax adjudicated lands, and not presently under mineral lease and cross hatched on August 9, 2006, situated in Plaquemines Parish, Louisiana, and more particularly described as follows: Beginning at the Southwest corner of Block 27, Breton Sound Area, having Coordinates of X = 2,709,100.00 and Y = 322,330.00; thence North 5,200.00 feet along the West line of said Block 27 to the Southwest corner of State Lease No. 4574, as amended, having Coordinates of X = 2,709,100.00 and Y = 327,530.00; thence along the boundary of said State Lease No. 4574 the following courses: East 7,500.00 feet and North 1,750.00 feet to a point on its East line, also being the Southwest corner of State Lease No. 15958 having Coordinates of X = 2,716,600.00 and Y = 329,280.00; thence along the boundary of said State Lease No. 15958 the following courses: North 51 degrees 20 minutes 25 seconds East 4,354.12 feet and North 1,030.00 feet to its Northeast corner and a point on the boundary of said State Lease No. 4574 having Coordinates of X = 2,720,000.00 and Y = 333,030.00; thence along the boundary of said State Lease No. 4574 the following courses: East 200.00 feet and North 28 degrees 30 minutes 41 seconds East 4,608.96 feet to its Northeast corner and a point on the North line of said Block 27 having Coordinates of X = 2,722,400.00 and Y = 337,080.00; thence East 1,450.00 feet along the North line of said Block 27 to its Northeast corner having Coordinates of X = 2,723,850.00 and Y = 337,080.00; thence South 6,340.17 feet along the East line of said Block 27 to a point having Coordinates of X = 2,723,850.00 and Y = 330,739.83; thence Southwesterly on a straight line to a point having Coordinates of X = 2,722,321.00 and Y = 329,172.00; thence Southwesterly on a straight line to a point having Coordinates of X = 2,720,696.00 and Y = 326,779.00; thence Southwesterly on a straight line to a point on the South line of said Block 27 having Coordinates of X = 2,718,009.98 and Y = 322,330.00; thence West 8,909.98 feet to the point of beginning, containing approximately **2,111.28 acres**, all as more particularly outlined on a plat on file in the Office of Mineral Resources, Department of Natural Resources. All bearings, distances and coordinates are based on Louisiana Coordinate System of 1927, (North or South Zone), where applicable.

NOTE: The above description of the Tract nominated for lease has been provided and corrected, where required, exclusively by the nomination party. Any mineral lease selected from this Tract and awarded by the Louisiana State Mineral Board shall be without warranty of any kind, either express, implied, or statutory, including, but not limited to, the implied warranties of merchantability and fitness for a particular purpose. Should the mineral lease awarded by the Louisiana State Mineral Board be subsequently modified, cancelled or abrogated due to the existence of conflicting leases, operating agreements, private claims or

other future obligations or conditions which may affect all or any portion of the leased Tract, it shall not relieve the Lessee of the obligation to pay any bonus due thereon to the Louisiana State Mineral Board, nor shall the Louisiana State Mineral Board be obligated to refund any consideration paid by the Lessor prior to such modification, cancellation, or abrogation, including, but not limited to, bonuses, rentals and royalties.

NOTE: The State of Louisiana does hereby reserve, and this lease shall be subject to, the imprescriptible right of surface use in the nature of a servitude in favor of the Department of Natural Resources, including its Offices and Commissions, for the sole purpose of implementing, constructing, servicing and maintaining approved coastal zone management and/or restoration projects. Utilization of any and all rights derived under this lease by the mineral lessee, its agents, successors or assigns, shall not interfere with nor hinder the reasonable surface use by the Department of Natural Resources, its Offices or Commissions, as herein above reserved.

Applicant: BONURA ENERGY INVESTMENTS

Bidder	Cash Payment	Price/Acre	Rental	Oil	Gas	Other

Legend

- 060800035
- 060800035_06_08_06
- Blocks
- Active_Leases

DOQQ2004

BS0023

BS0026

BS0039

SL 2326

BS0022

BS0038

BS0027

SL 4574

PLAQUEMINES PARISH

BRETON SOUND AREA

BRETON SOUND AREA

SL 15958

BS0028

SL 1999

P.O.B.



TRACT 38512 - Portion of Blocks 28, and 37, Breton Sound Area, Plaquemines Parish, Louisiana

All of the lands now or formerly constituting the beds and bottoms of all water bodies of every nature and description the title of which vests in the State of Louisiana, together with all islands arising therein and other lands formed by accretion or by reliction, where allowed by law, excepting tax adjudicated lands, and not presently under mineral lease and cross hatched on August 9, 2006, situated in Plaquemines Parish, Louisiana, and more particularly described as follows: Beginning at a point in Block 28, Breton Sound Area, also being a point on the South line of State Lease No. 1999, as amended, having Coordinates of X = 2,704,580.00 and Y = 327,530.00; thence South 9,260.00 feet to the Northeast corner of State Lease No. 4409, as amended, having Coordinates of X = 2,704,580.00 and Y = 318,270.00; thence along the boundary of said State Lease No. 4409 the following courses: West 4,020.00 feet, South 4,020.00 feet and East 2,080.00 feet to a point on its South line having Coordinates of X = 2,702,640.00 and Y = 314,250.00; thence South 912.04 feet to a point having Coordinates of X = 2,702,640.00 and Y = 313,337.96; thence Southwesterly on a straight line to a point on the West line of Block 37, Breton Sound Area, having Coordinates of X = 2,694,350.00 and Y = 310,492.12; thence North 11,144.88 feet along the West line of said Block 37 to the Southwest corner of said State Lease No. 4409 having Coordinates of X = 2,694,350.00 and Y = 321,637.00; thence along the boundary of said State Lease No. 4409 the following courses: East 4,904.00 feet and North 693.00 feet to its Northeast Corner, also being a point on the North line of said Block 37 and a point on the South line of said State Lease No. 1999 having Coordinates of X = 2,699,254.00 and Y = 322,330.00; thence along the boundary of said State Lease No. 1999 the following courses: East 3,386.00 feet, North 5,200.00 feet and East 1,940.00 feet to the point of beginning, containing approximately **2,124.53 acres**, all as more particularly outlined on a plat on file in the Office of Mineral Resources, Department of Natural Resources. All bearings, distances and coordinates are based on Louisiana Coordinate System of 1927, (North or South Zone), where applicable.

NOTE: The above description of the Tract nominated for lease has been provided and corrected, where required, exclusively by the nomination party. Any mineral lease selected from this Tract and awarded by the Louisiana State Mineral Board shall be without warranty of any kind, either express, implied, or statutory, including, but not limited to, the implied warranties of merchantability and fitness for a particular purpose. Should the mineral lease awarded by the Louisiana State Mineral Board be subsequently modified, cancelled or abrogated due to the existence of conflicting leases, operating agreements, private claims or other future obligations or conditions which may affect all or any portion of the leased Tract, it shall not relieve the Lessee of the obligation to pay any bonus due thereon to the Louisiana State Mineral Board, nor shall the Louisiana State Mineral Board be obligated to refund any consideration

paid by the Lessor prior to such modification, cancellation, or abrogation, including, but not limited to, bonuses, rentals and royalties.

NOTE: The State of Louisiana does hereby reserve, and this lease shall be subject to, the imprescriptible right of surface use in the nature of a servitude in favor of the Department of Natural Resources, including its Offices and Commissions, for the sole purpose of implementing, constructing, servicing and maintaining approved coastal zone management and/or restoration projects. Utilization of any and all rights derived under this lease by the mineral lessee, its agents, successors or assigns, shall not interfere with nor hinder the reasonable surface use by the Department of Natural Resources, its Offices or Commissions, as herein above reserved.

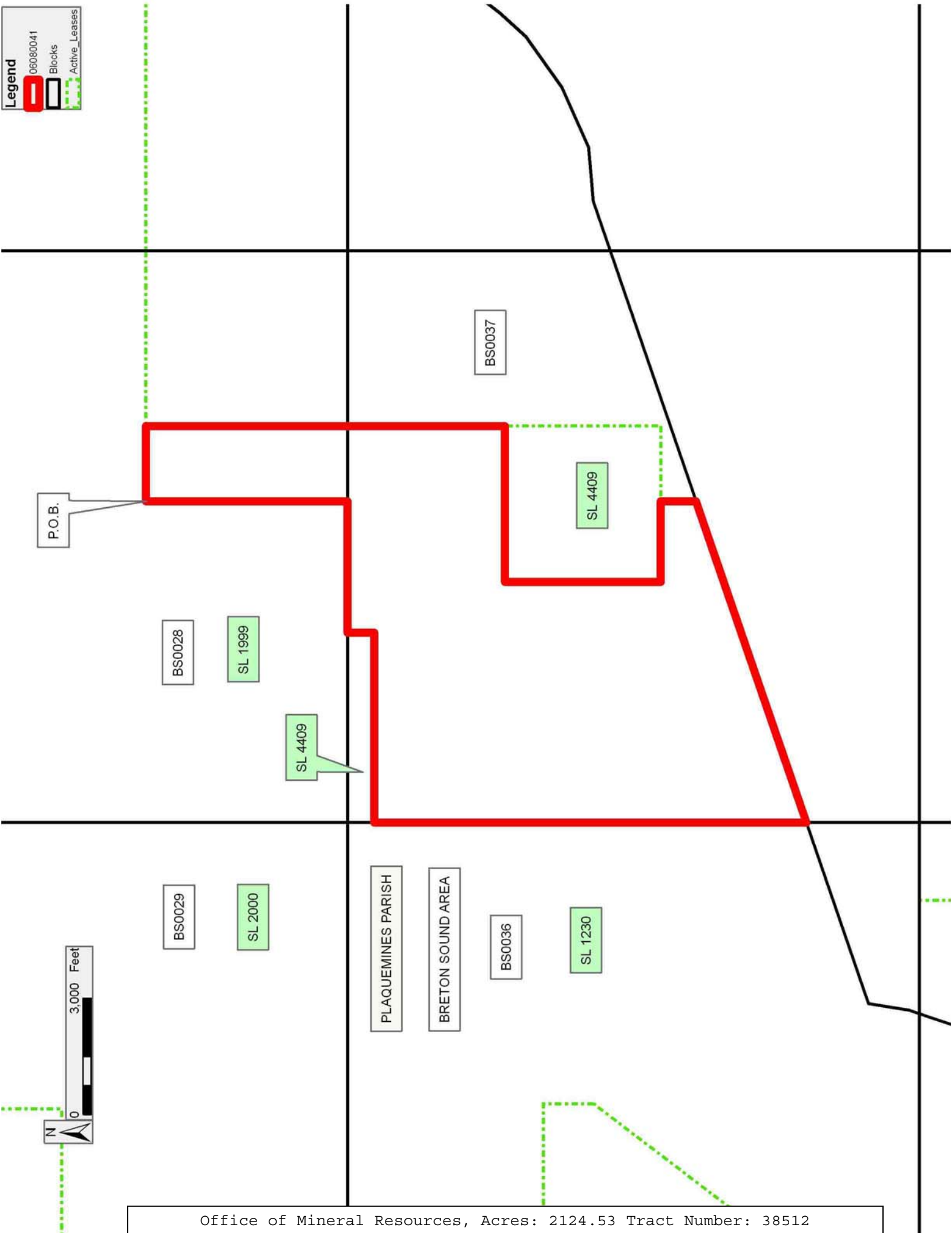
NOTE: It appears, according to our records, that a portion of this Tract is located within the restrictive safety fairway area as set out by the Corps of Engineers, U.S. Army and/or the restrictive anchorage area as set out by the U.S. Coast Guard.

Applicant: BONURA ENERGY INVESTMENTS

Bidder	Cash Payment	Price/Acre	Rental	Oil	Gas	Other

Legend

- 06080041
- Blocks
- Active_Leases



TRACT 38513 - Portion of Blocks 28, 37, and 38, Breton Sound Area, Plaquemines Parish, Louisiana

All of the lands now or formerly constituting the beds and bottoms of all water bodies of every nature and description the title of which vests in the State of Louisiana, together with all islands arising therein and other lands formed by accretion or by reliction, where allowed by law, excepting tax adjudicated lands, and not presently under mineral lease and cross hatched on August 9, 2006, situated in Plaquemines Parish, Louisiana, and more particularly described as follows: Beginning at a point in Block 28, Breton Sound Area, also being a point on the South line of State Lease No. 1999, as amended, having Coordinates of X = 2,704,580.00 and Y = 327,530.00; thence East 4,520.00 feet along the South line of said State Lease No. 1999 to its Southeast corner and a point on the East line of said Block 28 having Coordinates of X = 2,709,100.00 and Y = 327,530.00; thence South 5,200.00 feet along the East line of said Block 28 to its Southeast corner, also being the Northwest corner of Block 38, Breton Sound Area having Coordinates of X = 2,709,100.00 and Y = 322,330.00; thence East 8,909.98 feet along the North line of said Block 38 to a point having Coordinates of X = 2,718,009.98 and Y = 322,330.00; thence Southwesterly on a straight line to a point having Coordinates of X = 2,717,012.00 and Y = 320,677.00; thence Southwesterly on a straight line to a point having Coordinates of X = 2,715,236.00 and Y = 318,391.00; thence Southwesterly on a straight line to a point having Coordinates of X = 2,714,633.00 and Y = 317,731.00; thence Southwesterly on a straight line to a point having Coordinates of X = 2,713,324.00 and Y = 316,801.00; thence Southwesterly on a straight line to a point having Coordinates of X = 2,711,772.00 and Y = 316,107.00; thence Southwesterly on a straight line to a point having Coordinates of X = 2,710,380.00 and Y = 315,995.00; thence Southwesterly on a straight line to a point on the West line of said Block 38 having Coordinates of X = 2,709,100.00 and Y = 315,555.59; thence Southwesterly on a straight line to a point having Coordinates of X = 2,702,640.00 and Y = 313,337.96; thence North 912.04 feet to a point on the South line of State Lease No. 4409, as amended, having Coordinates of X = 2,702,640.00 and Y = 314,250.00; thence along the boundary of said State Lease No. 4409 the following courses: East 1,940.00 feet and North 4,020.00 feet to its Northeast Corner having Coordinates of X = 2,704,580.00 and Y = 318,270.00; thence North 9,260.00 feet to the point of beginning, containing approximately **2,295.64 acres**, all as more particularly outlined on a plat on file in the Office of Mineral Resources, Department of Natural Resources. All bearings, distances and coordinates are based on Louisiana Coordinate System of 1927, (North or South Zone), where applicable.

NOTE: The above description of the Tract nominated for lease has been provided and corrected, where required, exclusively by the nomination party. Any mineral lease selected from this Tract and awarded by the Louisiana State Mineral Board shall be without warranty of any kind, either express, implied, or statutory, including, but not limited to, the implied warranties of merchantability and fitness for a particular

purpose. Should the mineral lease awarded by the Louisiana State Mineral Board be subsequently modified, cancelled or abrogated due to the existence of conflicting leases, operating agreements, private claims or other future obligations or conditions which may affect all or any portion of the leased Tract, it shall not relieve the Lessee of the obligation to pay any bonus due thereon to the Louisiana State Mineral Board, nor shall the Louisiana State Mineral Board be obligated to refund any consideration paid by the Lessor prior to such modification, cancellation, or abrogation, including, but not limited to, bonuses, rentals and royalties.

NOTE: The State of Louisiana does hereby reserve, and this lease shall be subject to, the imprescriptible right of surface use in the nature of a servitude in favor of the Department of Natural Resources, including its Offices and Commissions, for the sole purpose of implementing, constructing, servicing and maintaining approved coastal zone management and/or restoration projects. Utilization of any and all rights derived under this lease by the mineral lessee, its agents, successors or assigns, shall not interfere with nor hinder the reasonable surface use by the Department of Natural Resources, its Offices or Commissions, as herein above reserved.

NOTE: It appears, according to our records, that a portion of this Tract is located within the restrictive safety fairway area as set out by the Corps of Engineers, U.S. Army and/or the restrictive anchorage area as set out by the U.S. Coast Guard.

Applicant: BONURA ENERGY INVESTMENTS

Bidder	Cash Payment	Price/Acre	Rental	Oil	Gas	Other

Legend

- 06080043
- Blocks
- Active_Leases

