

TRACT 38474 - St. Bernard Parish, Louisiana

All of the lands now or formerly constituting the beds and bottoms of all water bodies of every nature and description the title of which vests in the State of Louisiana, together with all islands arising therein and other lands formed by accretion or by reliction, where allowed by law, excepting tax adjudicated lands, and not presently under mineral lease and cross hatched on August 9, 2006, situated in St. Bernard Parish, Louisiana, and more particularly described as follows: Beginning at a point having Coordinates of X = 2,607,199.00 and Y = 465,928.00; thence North 15,486.00 feet to a point having Coordinates of X = 2,607,199.00 and Y = 481,414.00; thence East 10,482.00 feet to a point having Coordinates of X = 2,617,681.00 and Y = 481,414.00; thence South 15,486.00 feet to a point having Coordinates of X = 2,617,681.00 and Y = 465,928.00; thence West 10,482.00 feet to the point of beginning, containing approximately **2,500 acres**, all as more particularly outlined on a plat on file in the Office of Mineral Resources, Department of Natural Resources. All bearings, distances and coordinates are based on Louisiana Coordinate System of 1927, (North or South Zone), where applicable.

NOTE: The above description of the Tract nominated for lease has been provided and corrected, where required, exclusively by the nomination party. Any mineral lease selected from this Tract and awarded by the Louisiana State Mineral Board shall be without warranty of any kind, either express, implied, or statutory, including, but not limited to, the implied warranties of merchantability and fitness for a particular purpose. Should the mineral lease awarded by the Louisiana State Mineral Board be subsequently modified, cancelled or abrogated due to the existence of conflicting leases, operating agreements, private claims or other future obligations or conditions which may affect all or any portion of the leased Tract, it shall not relieve the Lessee of the obligation to pay any bonus due thereon to the Louisiana State Mineral Board, nor shall the Louisiana State Mineral Board be obligated to refund any consideration paid by the Lessor prior to such modification, cancellation, or abrogation, including, but not limited to, bonuses, rentals and royalties.

NOTE: The Office of Mineral Resources will require a minimum bonus of \$230 per acre and a minimum royalty of 23%.

NOTE: The State of Louisiana does hereby reserve, and this lease shall be subject to, the imprescriptible right of surface use in the nature of a servitude in favor of the Department of Natural Resources, including its Offices and Commissions, for the sole purpose of implementing, constructing, servicing and maintaining approved coastal zone management and/or restoration projects. Utilization of any and all rights derived under this lease by the mineral lessee, its agents, successors or assigns, shall not interfere with nor hinder the reasonable surface use by the Department of Natural Resources, its Offices or Commissions, as herein above reserved.

NOTE: The Department of Wildlife and Fisheries has designated certain areas in the coastal waters of the State of Louisiana as Oyster Seed Bed Areas. The exact location of those Seed Bed Areas must be obtained from the Department of Wildlife and Fisheries and any work done under a mineral lease from the State of Louisiana may necessarily be conducted in conformity with the rules and regulations promulgated by the said Department of Wildlife and Fisheries for Oyster Seed Bed Areas.

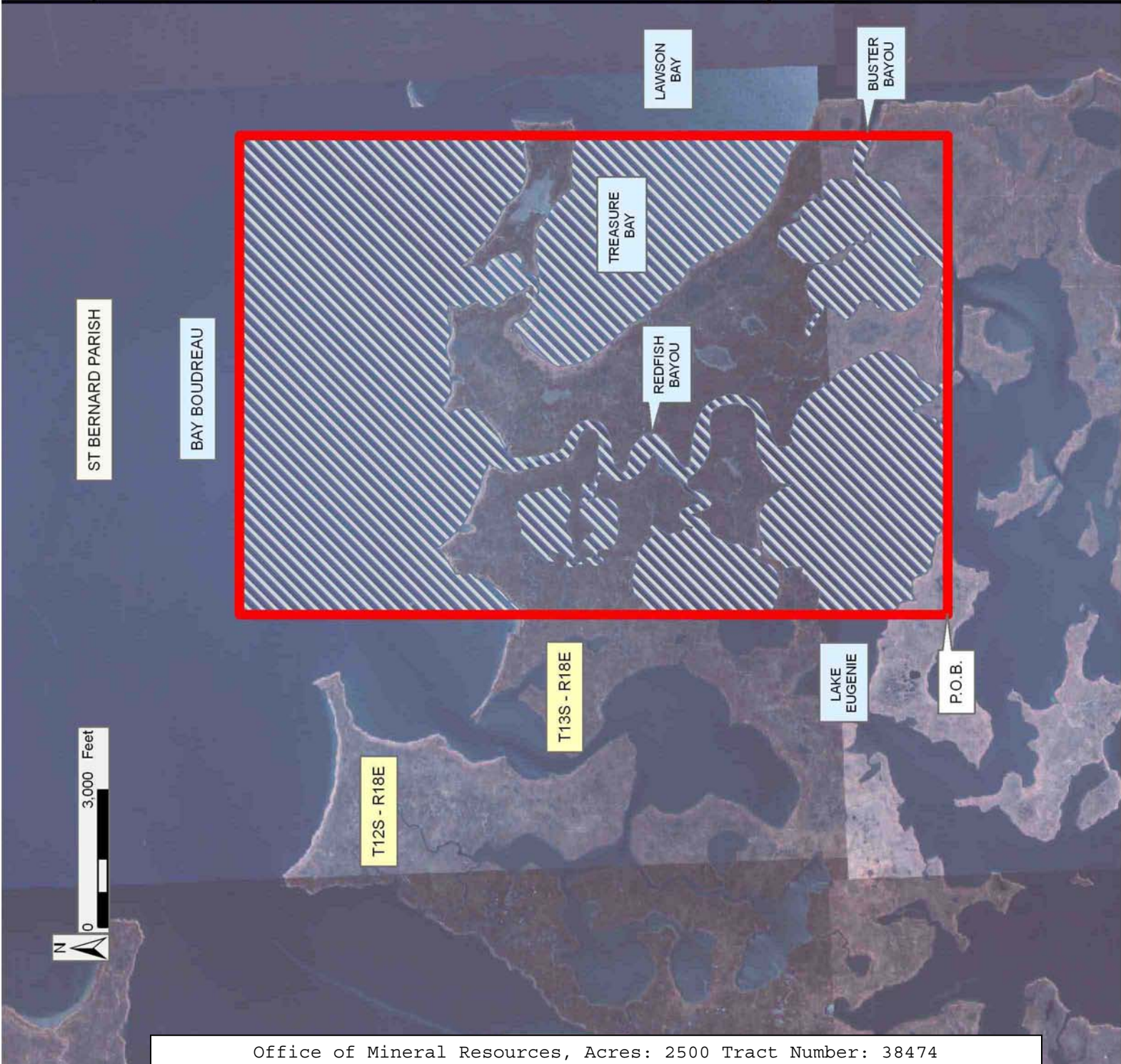
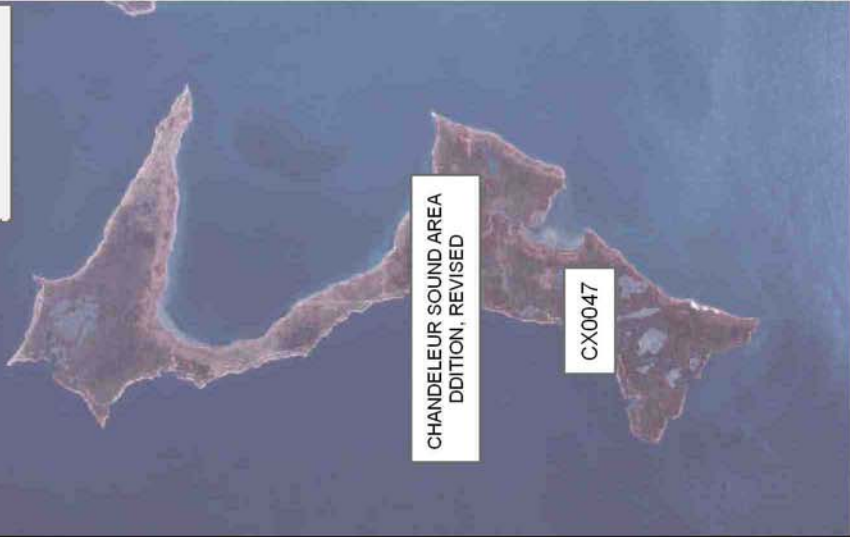
Applicant: TRINITY ENERGY SERVICES, LLC

Bidder	Cash Payment	Price/Acre	Rental	Oil	Gas	Other

Legend

-  060800091
-  Blocks
-  Counties
-  060800091_06_07_06

DOQQ2004



TRACT 38475 - Assumption Parish, Louisiana

All of the lands now or formerly constituting the beds and bottoms of all water bodies of every nature and description the title of which vests in the State of Louisiana, together with all islands arising therein and other lands formed by accretion or by reliction, where allowed by law, excepting tax adjudicated lands, and not presently under mineral lease and cross hatched on August 9, 2006, situated in Assumption Parish, Louisiana, and more particularly described as follows: Beginning at a point having Coordinates of X = 2,040,925.91 and Y = 485,055.07; thence East 18,480.00 feet to a point having Coordinates of X = 2,059,405.91 and Y = 485,055.07; thence South 14,455.07 feet to a point having Coordinates of X = 2,059,405.91 and Y = 470,600.00; thence West 2,805.91 feet to the Northeast corner of State Lease No. 18743 having Coordinates of X = 2,056,600.00 and Y = 470,600.00; thence continue West 7,800.00 feet along the North line of said State Lease No. 18743 to a point having Coordinates of X = 2,048,800.00 and Y = 470,600.00; thence North 6,156.90 feet to a point having Coordinates of X = 2,048,800.00 and Y = 476,756.90; thence West 7,874.09 feet to a point having Coordinates of X = 2,040,925.91 and Y = 476,756.90; thence North 8,298.17 feet to the point of beginning, containing approximately **82 acres**, all as more particularly outlined on a plat on file in the Office of Mineral Resources, Department of Natural Resources. All bearings, distances and coordinates are based on Louisiana Coordinate System of 1927, (North or South Zone), where applicable.

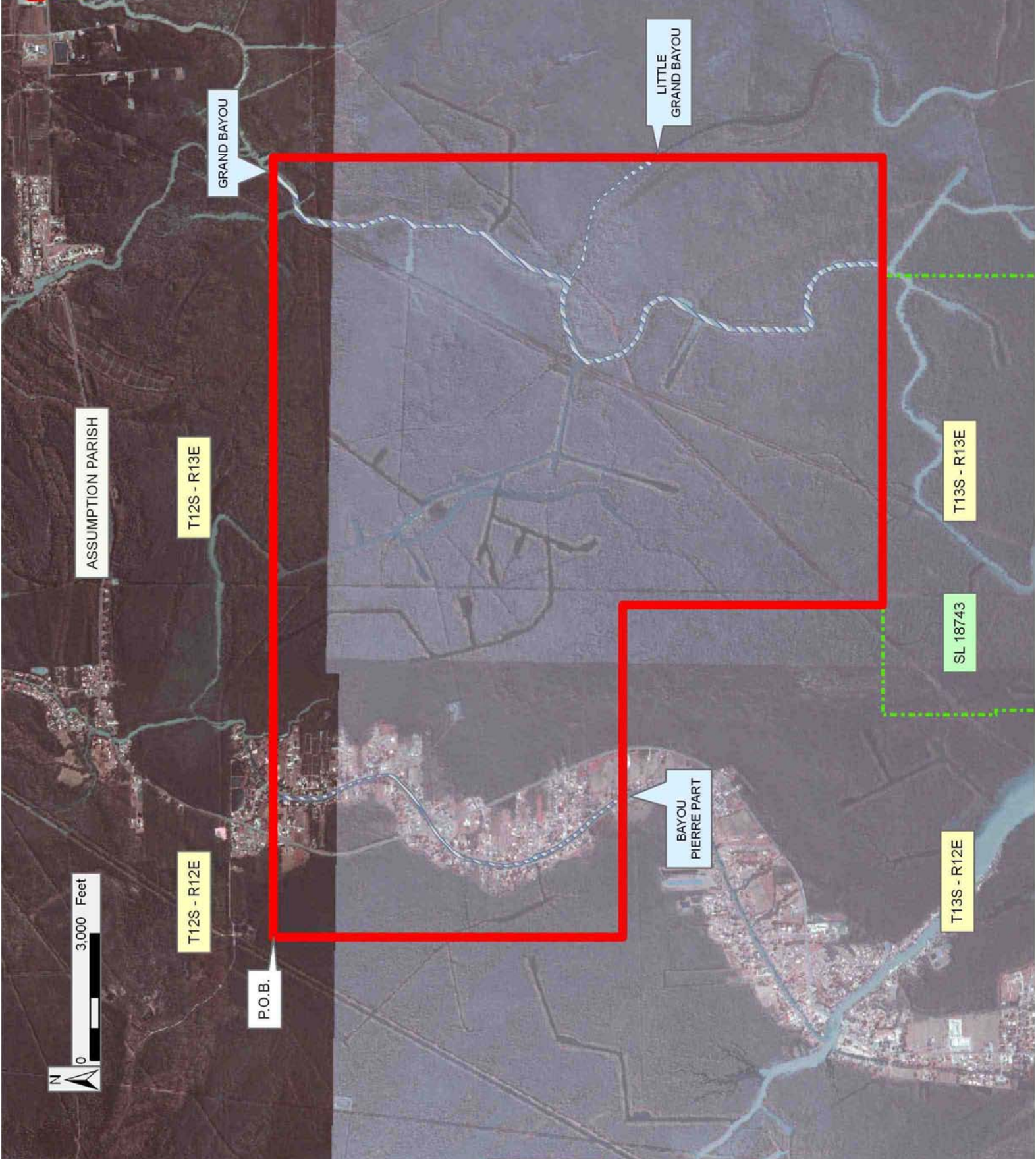
NOTE: The above description of the Tract nominated for lease has been provided and corrected, where required, exclusively by the nomination party. Any mineral lease selected from this Tract and awarded by the Louisiana State Mineral Board shall be without warranty of any kind, either express, implied, or statutory, including, but not limited to, the implied warranties of merchantability and fitness for a particular purpose. Should the mineral lease awarded by the Louisiana State Mineral Board be subsequently modified, cancelled or abrogated due to the existence of conflicting leases, operating agreements, private claims or other future obligations or conditions which may affect all or any portion of the leased Tract, it shall not relieve the Lessee of the obligation to pay any bonus due thereon to the Louisiana State Mineral Board, nor shall the Louisiana State Mineral Board be obligated to refund any consideration paid by the Lessor prior to such modification, cancellation, or abrogation, including, but not limited to, bonuses, rentals and royalties.

Applicant: LESLIE M. COOPER

Bidder	Cash Payment	Price/Acre	Rental	Oil	Gas	Other

Legend

- 060800084
- Active_Leases
- Counties
- 060800084_06_09_06
- DOQQ2004**



TRACT 38476 - St. Bernard Parish, Louisiana

All of the lands now or formerly constituting the beds and bottoms of all water bodies of every nature and description the title of which vests in the State of Louisiana, together with all islands arising therein and other lands formed by accretion or by reliction, where allowed by law, excepting tax adjudicated lands, and not presently under mineral lease and cross hatched on August 9, 2006, situated in St. Bernard Parish, Louisiana, and more particularly described as follows: Beginning at a point having Coordinates of X = 2,607,199.00 and Y = 465,928.00; thence East 10,482.00 feet to a point having Coordinates of X = 2,617,681.00 and Y = 465,928.00; thence South 15,348.00 feet to a point having Coordinates of X = 2,617,681.00 and Y = 450,580.00; thence West 10,482.00 feet to a point having Coordinates of X = 2,607,199.00 and Y = 450,580.00; thence North 15,348.00 feet to the point of beginning, containing approximately **2,116 acres**, all as more particularly outlined on a plat on file in the Office of Mineral Resources, Department of Natural Resources. All bearings, distances and coordinates are based on Louisiana Coordinate System of 1927, (North or South Zone), where applicable.

NOTE: The above description of the Tract nominated for lease has been provided and corrected, where required, exclusively by the nomination party. Any mineral lease selected from this Tract and awarded by the Louisiana State Mineral Board shall be without warranty of any kind, either express, implied, or statutory, including, but not limited to, the implied warranties of merchantability and fitness for a particular purpose. Should the mineral lease awarded by the Louisiana State Mineral Board be subsequently modified, cancelled or abrogated due to the existence of conflicting leases, operating agreements, private claims or other future obligations or conditions which may affect all or any portion of the leased Tract, it shall not relieve the Lessee of the obligation to pay any bonus due thereon to the Louisiana State Mineral Board, nor shall the Louisiana State Mineral Board be obligated to refund any consideration paid by the Lessor prior to such modification, cancellation, or abrogation, including, but not limited to, bonuses, rentals and royalties.

NOTE: The Office of Mineral Resources will require a minimum bonus of \$230 per acre and a minimum royalty of 23%.

NOTE: The State of Louisiana does hereby reserve, and this lease shall be subject to, the imprescriptible right of surface use in the nature of a servitude in favor of the Department of Natural Resources, including its Offices and Commissions, for the sole purpose of implementing, constructing, servicing and maintaining approved coastal zone management and/or restoration projects. Utilization of any and all rights derived under this lease by the mineral lessee, its agents, successors or assigns, shall not interfere with nor hinder the reasonable surface use by the Department of Natural Resources, its Offices or Commissions, as herein above reserved.

NOTE: The Department of Wildlife and Fisheries has designated certain areas in the coastal waters of the State of Louisiana as Oyster Seed Bed Areas. The exact location of those Seed Bed Areas must be obtained from the Department of Wildlife and Fisheries and any work done under a mineral lease from the State of Louisiana may necessarily be conducted in conformity with the rules and regulations promulgated by the said Department of Wildlife and Fisheries for Oyster Seed Bed Areas.

Applicant: TRINITY ENERGY SERVICES, LLC

Bidder	Cash Payment	Price/Acre	Rental	Oil	Gas	Other

Legend

-  06080092
-  Blocks
-  Counties
-  06080092_06_07_06

DOQQ2004

CHANDELEUR SOUND AREA

CS0001

CS0022

LAWSON BAY

LAKE OF THE MOUND

BAYOU MUSCLE

BUSTER BAYOU

T13S - R18E

ST BERNARD PARISH

P.O.B.

LAKE EUGENIE



TRACT 38477 - Cameron Parish, Louisiana

All of the lands now or formerly constituting the beds and bottoms of all water bodies of every nature and description the title of which vests in the State of Louisiana, together with all islands arising therein and other lands formed by accretion or by reliction, where allowed by law, excepting tax adjudicated lands, and not presently under mineral lease and cross hatched on August 9, 2006, situated in Cameron Parish, Louisiana, and more particularly described as follows: Beginning at a point having Coordinates of X = 1,229,131.00 and Y = 454,202.00; thence West 9,660.67 feet to a point having Coordinates of X = 1,219,470.33 and Y = 454,202.00; thence North 5,755.00 feet to the Southwest corner of State Lease No. 18038 having Coordinates of X = 1,219,470.33 and Y = 459,957.00; thence along the boundary of said State Lease No. 18038 the following courses: East 5,568.67 feet, North 1,208.00 feet, East 1,717.80 feet and North 924.57 feet to its Northeast corner, also being the Southwest corner of State Lease No. 18535, a point having Coordinates of X = 1,226,756.80 and Y = 462,089.57; thence East 6,770.79 feet along the South boundary of said State Lease No. 18535 to its Southeast corner, a point having Coordinates of X = 1,233,527.59 and Y = 462,089.57; thence South 57 degrees 23 minutes 31 seconds West 3,957.36 feet to a point having Coordinates of X = 1,230,194.00 and Y = 459,957.00; thence South 10 degrees 27 minutes 54 seconds West 5,852.35 feet to the point of beginning, containing approximately **1,401 acres**, all as more particularly outlined on a plat on file in the Office of Mineral Resources, Department of Natural Resources. All bearings, distances and coordinates are based on Louisiana Coordinate System of 1927, (North or South Zone), where applicable.

NOTE: The above description of the Tract nominated for lease has been provided and corrected, where required, exclusively by the nomination party. Any mineral lease selected from this Tract and awarded by the Louisiana State Mineral Board shall be without warranty of any kind, either express, implied, or statutory, including, but not limited to, the implied warranties of merchantability and fitness for a particular purpose. Should the mineral lease awarded by the Louisiana State Mineral Board be subsequently modified, cancelled or abrogated due to the existence of conflicting leases, operating agreements, private claims or other future obligations or conditions which may affect all or any portion of the leased Tract, it shall not relieve the Lessee of the obligation to pay any bonus due thereon to the Louisiana State Mineral Board, nor shall the Louisiana State Mineral Board be obligated to refund any consideration paid by the Lessor prior to such modification, cancellation, or abrogation, including, but not limited to, bonuses, rentals and royalties.




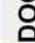
NOTE: The State of Louisiana does hereby reserve, and this lease shall be subject to, the imprescriptible right of surface use in the nature of a servitude in favor of the Department of Natural Resources, including its Offices and Commissions, for the sole purpose of implementing, constructing, servicing and maintaining approved coastal zone management and/or restoration projects. Utilization of any and all rights derived

under this lease by the mineral lessee, its agents, successors or assigns, shall not interfere with nor hinder the reasonable surface use by the Department of Natural Resources, its Offices or Commissions, as herein above reserved.

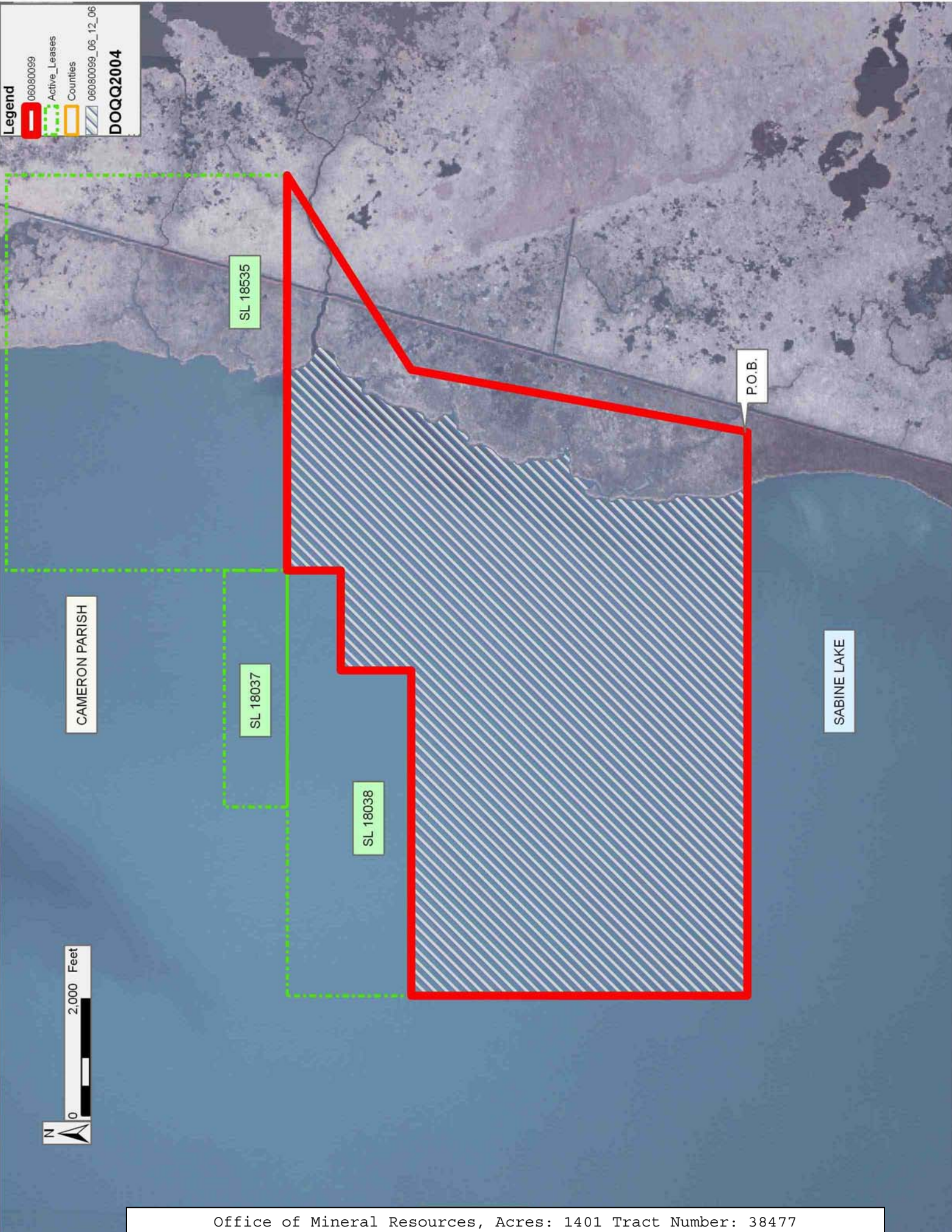
Applicant: SAXON ENERGY, INC.

Bidder	Cash Payment	Price/Acre	Rental	Oil	Gas	Other

Legend

-  060800099
-  Active_Leases
-  Counties
-  060800099_06_12_06

DOQQ2004



TRACT 38478 - Cameron Parish, Louisiana

All of the lands now or formerly constituting the beds and bottoms of all water bodies of every nature and description the title of which vests in the State of Louisiana, together with all islands arising therein and other lands formed by accretion or by reliction, where allowed by law, excepting tax adjudicated lands, and not presently under mineral lease and cross hatched on August 9, 2006, situated in Cameron Parish, Louisiana, and more particularly described as follows: Beginning at a point having Coordinates of X = 1,219,470.33 and Y = 454,202.00; thence West 6,451.33 feet to the most Northerly corner of State Lease No. 18158 a point having Coordinates of X = 1,213,019.00 and Y = 454,202.00; thence along the boundary of said State Lease No. 18158 the following courses: South 52 degrees 46 minutes 36 seconds West 4,635.29 feet and South 39 degrees 14 minutes 41 seconds East 994.25 feet to its most Southerly Southwest corner, a point having Coordinates of X = 1,209,957.00 and Y = 450,628.00; thence West 4,189.63 feet to a point on the Texas Louisiana Boundary having Coordinates of X = 1,205,767.37 and Y = 450,628.00; thence along the said Texas Louisiana Boundary the following courses: North 35 degrees 51 minutes 28 seconds East 175.21 feet to a point having Coordinates of X = 1,205,870.00 and Y = 450,770.00; North 24 degrees 40 minutes 16 seconds East 3,964.93 feet to a point having Coordinates of X = 1,207,525.00 and Y = 454,373.00; North 36 degrees 44 minutes 14 seconds East 3,970.61 feet to a point having Coordinates of X = 1,209,900.00 and Y = 457,555.00; and North 31 degrees 07 minutes 12 seconds East 2,805.79 feet to a point having Coordinates of X = 1,211,350.12 and Y = 459,957.00; thence East 8,120.21 feet to a point having Coordinates of X = 1,219,470.33 and Y = 459,957.00; thence South 5,755.00 feet to the point of beginning, containing approximately **1,666.78 acres, LESS AND EXCEPT** that portion thereof, if any, located West of the boundary line between the States of Texas and Louisiana as determined by the report of the Special Master and adjudicated by the Supreme Court of the United States in litigation styled **Texas v. Louisiana, et al No. 36 Original**, or as otherwise approved by said court, all as more particularly outlined on a plat on file in the Office of Mineral Resources, Department of Natural Resources. All bearings, distances and coordinates are based on Louisiana Coordinate System of 1927, (North or South Zone), where applicable.

NOTE: The above description of the Tract nominated for lease has been provided and corrected, where required, exclusively by the nomination party. Any mineral lease selected from this Tract and awarded by the Louisiana State Mineral Board shall be without warranty of any kind, either express, implied, or statutory, including, but not limited to, the implied warranties of merchantability and fitness for a particular purpose. Should the mineral lease awarded by the Louisiana State Mineral Board be subsequently modified, cancelled or abrogated due to the existence of conflicting leases, operating agreements, private claims or other future obligations or conditions which may affect all or any portion of the leased Tract, it shall not relieve the Lessee of the obligation to pay any bonus due thereon to the Louisiana State Mineral Board, nor shall

the Louisiana State Mineral Board be obligated to refund any consideration paid by the Lessor prior to such modification, cancellation, or abrogation, including, but not limited to, bonuses, rentals and royalties.

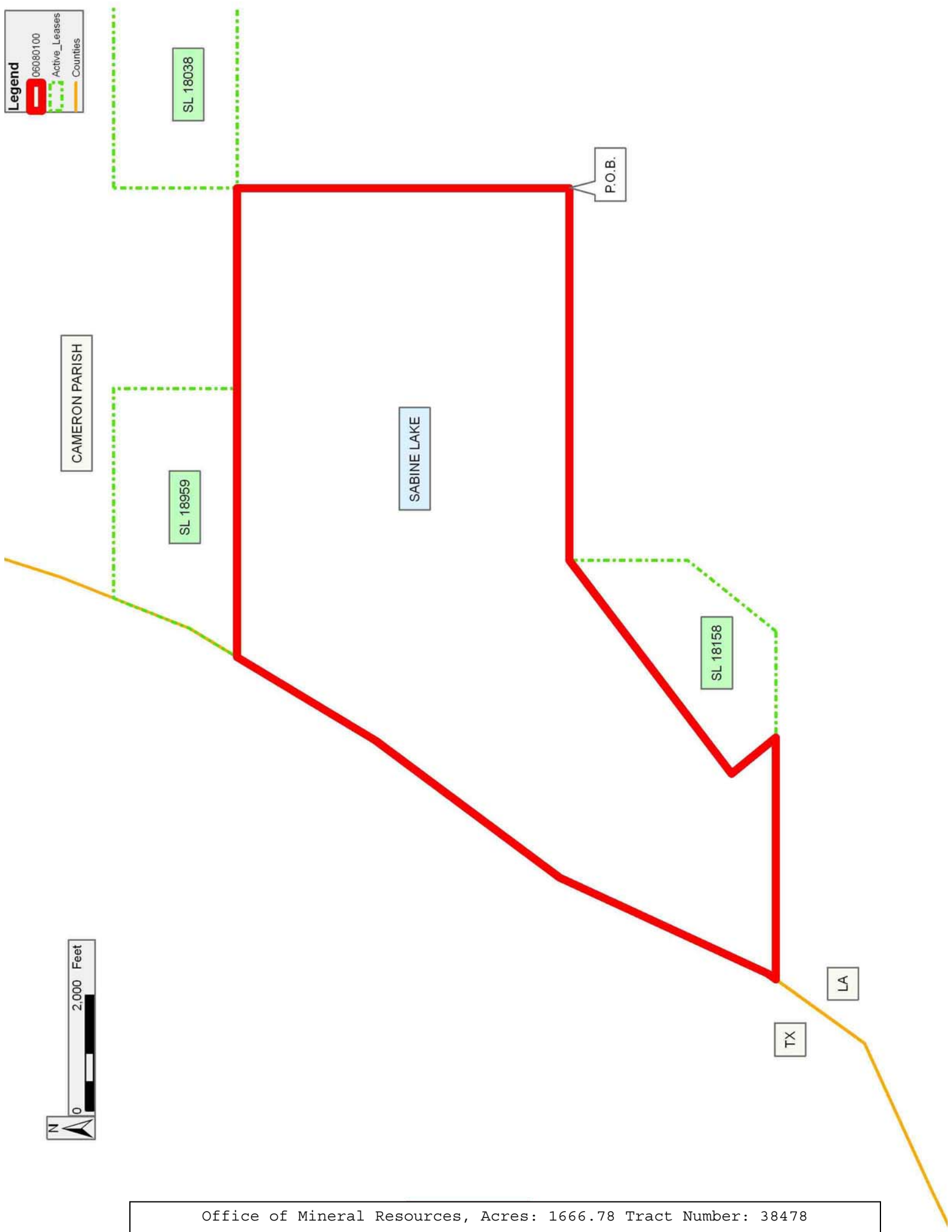
NOTE: The State of Louisiana does hereby reserve, and this lease shall be subject to, the imprescriptible right of surface use in the nature of a servitude in favor of the Department of Natural Resources, including its Offices and Commissions, for the sole purpose of implementing, constructing, servicing and maintaining approved coastal zone management and/or restoration projects. Utilization of any and all rights derived under this lease by the mineral lessee, its agents, successors or assigns, shall not interfere with nor hinder the reasonable surface use by the Department of Natural Resources, its Offices or Commissions, as herein above reserved.

Applicant: SAXON ENERGY, INC.

Bidder	Cash Payment	Price/Acre	Rental	Oil	Gas	Other

Legend

- 06080100
- Active_Leases
- Counties



TRACT 38479 - Cameron Parish, Louisiana

All of the lands now or formerly constituting the beds and bottoms of all water bodies of every nature and description the title of which vests in the State of Louisiana, together with all islands arising therein and other lands formed by accretion or by reliction, where allowed by law, excepting tax adjudicated lands, and not presently under mineral lease and cross hatched on August 9, 2006, situated in Cameron Parish, Louisiana, and more particularly described as follows: Beginning at a point having Coordinates of X = 1,219,900.00 and Y = 454,202.00; thence South 6,557.00 feet to the North boundary of State Lease No. 16095 having Coordinates of X = 1,219,900.00 and Y = 447,645.00; thence West 5,000.00 feet along the North line of said State Lease No. 16095 to its Northwest corner having Coordinates of X = 1,214,900.00 and Y = 447,645.00; thence West 13,388.10 feet to a point on the Texas Louisiana Boundary having Coordinates of X = 1,201,511.90 and Y = 447,645.00; thence along said Texas Louisiana Boundary the following courses: North 56 degrees 32 minutes 33 seconds East 81.62 feet to a point having Coordinates of X = 1,201,580.00 and Y = 447,690.00, North 65 degrees 25 minutes 23 seconds East 3,390.13 feet to a point having Coordinates of X = 1,204,663.00 and Y = 449,100.00 and North 35 degrees 51 minutes 28 seconds East 1,885.32 feet to a point having Coordinates of X = 1,205,767.37 and Y = 450,628.00; thence East 4,189.63 feet to the most Southerly Southwest corner of State Lease No. 18158 having Coordinates of X = 1,209,957.00 and Y = 450,628.00; thence along the boundary of said State Lease No. 18158 the following courses: East 1,837.00 feet to a point having Coordinates of X = 1,211,794.00 and Y = 450,628.00, North 38 degrees 44 minutes 15 seconds East 1,957.64 feet to a point having Coordinates of X = 1,213,019.00 and Y = 452,155.00 and North 2,047.00 feet to a point having Coordinates of X = 1,213,019.00 and Y = 454,202.00; thence East 6,881.00 feet to the Point of Beginning, containing approximately **1,663.22 acres, LESS AND EXCEPT** that portion thereof, if any, located West of the boundary line between the States of Texas and Louisiana as determined by the report of the Special Master and adjudicated by the Supreme Court of the United States in litigation styled **Texas v. Louisiana, et al No. 36 Original**, or as otherwise approved by said court, all as more particularly outlined on a plat on file in the Office of Mineral Resources, Department of Natural Resources. All bearings, distances and coordinates are based on Louisiana Coordinate System of 1927, (North or South Zone), where applicable.

NOTE: The above description of the Tract nominated for lease has been provided and corrected, where required, exclusively by the nomination party. Any mineral lease selected from this Tract and awarded by the Louisiana State Mineral Board shall be without warranty of any kind, either express, implied, or statutory, including, but not limited to, the implied warranties of merchantability and fitness for a particular purpose. Should the mineral lease awarded by the Louisiana State Mineral Board be subsequently modified, cancelled or abrogated due to the existence of conflicting leases, operating agreements, private claims or other future obligations or conditions which may affect all or any portion

of the leased Tract, it shall not relieve the Lessee of the obligation to pay any bonus due thereon to the Louisiana State Mineral Board, nor shall the Louisiana State Mineral Board be obligated to refund any consideration paid by the Lessor prior to such modification, cancellation, or abrogation, including, but not limited to, bonuses, rentals and royalties.

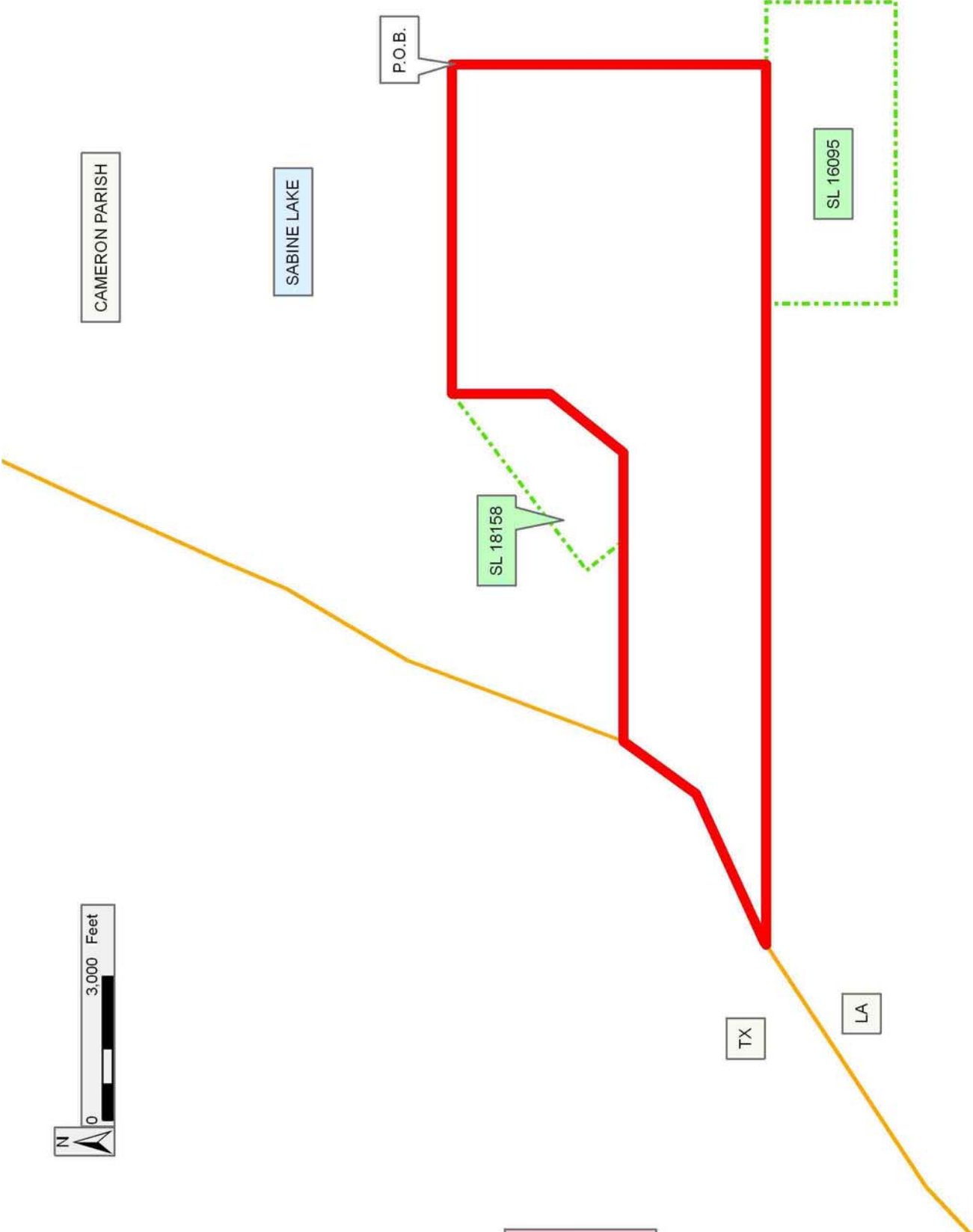
NOTE: The State of Louisiana does hereby reserve, and this lease shall be subject to, the imprescriptible right of surface use in the nature of a servitude in favor of the Department of Natural Resources, including its Offices and Commissions, for the sole purpose of implementing, constructing, servicing and maintaining approved coastal zone management and/or restoration projects. Utilization of any and all rights derived under this lease by the mineral lessee, its agents, successors or assigns, shall not interfere with nor hinder the reasonable surface use by the Department of Natural Resources, its Offices or Commissions, as herein above reserved.

Applicant: JIL EXPLORATION, INC.

Bidder	Cash Payment	Price/Acre	Rental	Oil	Gas	Other

Legend

- 06080052
- Tracts
- Active_Leases
- Counties



TRACT 38480 - Cameron Parish, Louisiana

All of the lands now or formerly constituting the beds and bottoms of all water bodies of every nature and description the title of which vests in the State of Louisiana, together with all islands arising therein and other lands formed by accretion or by reliction, where allowed by law, excepting tax adjudicated lands, and not presently under mineral lease and cross hatched on August 9, 2006, situated in Cameron Parish, Louisiana, and more particularly described as follows: Beginning at a point having Coordinates of X = 1,219,900.00 and Y = 454,202.00; thence East 9,300.00 feet to a point having Coordinates of X = 1,229,200.00 and Y = 454,202.00; thence South 11,300.82 feet to a point having Coordinates of X = 1,229,200.00 and Y = 442,901.18; thence West 6,000.00 feet to the Southeast corner of State Lease No. 16096 having Coordinates of X = 1,223,200.00 and Y = 442,901.18; thence along the boundary of said State Lease No. 16096 the following courses: North 2,443.82 feet to a point having Coordinates of X = 1,223,200.00 and Y = 445,345.00 and West 2,000.00 feet to a point on the East line of State Lease No. 16095 having Coordinates of X = 1,221,200.00 and Y = 445,345.00; thence along the boundary of said State Lease No. 16095 the following courses: North 2,300.00 feet to a point having Coordinates of X = 1,221,200.00 and Y = 447,645.00 and West 1,300.00 feet to a point having Coordinates of X = 1,219,900.00 and Y = 447,645.00 thence North 6,557.00 feet to the point of beginning, **LESS AND EXCEPT** that portion of Sabine National Wildlife Refuge that falls within the above described tract, containing approximately **1,434 acres**, all as more particularly outlined on a plat on file in the Office of Mineral Resources, Department of Natural Resources. All bearings, distances and coordinates are based on Louisiana Coordinate System of 1927, (North or South Zone), where applicable.

NOTE: The above description of the Tract nominated for lease has been provided and corrected, where required, exclusively by the nomination party. Any mineral lease selected from this Tract and awarded by the Louisiana State Mineral Board shall be without warranty of any kind, either express, implied, or statutory, including, but not limited to, the implied warranties of merchantability and fitness for a particular purpose. Should the mineral lease awarded by the Louisiana State Mineral Board be subsequently modified, cancelled or abrogated due to the existence of conflicting leases, operating agreements, private claims or other future obligations or conditions which may affect all or any portion of the leased Tract, it shall not relieve the Lessee of the obligation to pay any bonus due thereon to the Louisiana State Mineral Board, nor shall the Louisiana State Mineral Board be obligated to refund any consideration paid by the Lessor prior to such modification, cancellation, or abrogation, including, but not limited to, bonuses, rentals and royalties.





NOTE: The State of Louisiana does hereby reserve, and this lease shall be subject to, the imprescriptible right of surface use in the nature of a servitude in favor of the Department of Natural Resources, including its Offices and Commissions, for the sole purpose of implementing,

constructing, servicing and maintaining approved coastal zone management and/or restoration projects. Utilization of any and all rights derived under this lease by the mineral lessee, its agents, successors or assigns, shall not interfere with nor hinder the reasonable surface use by the Department of Natural Resources, its Offices or Commissions, as herein above reserved.

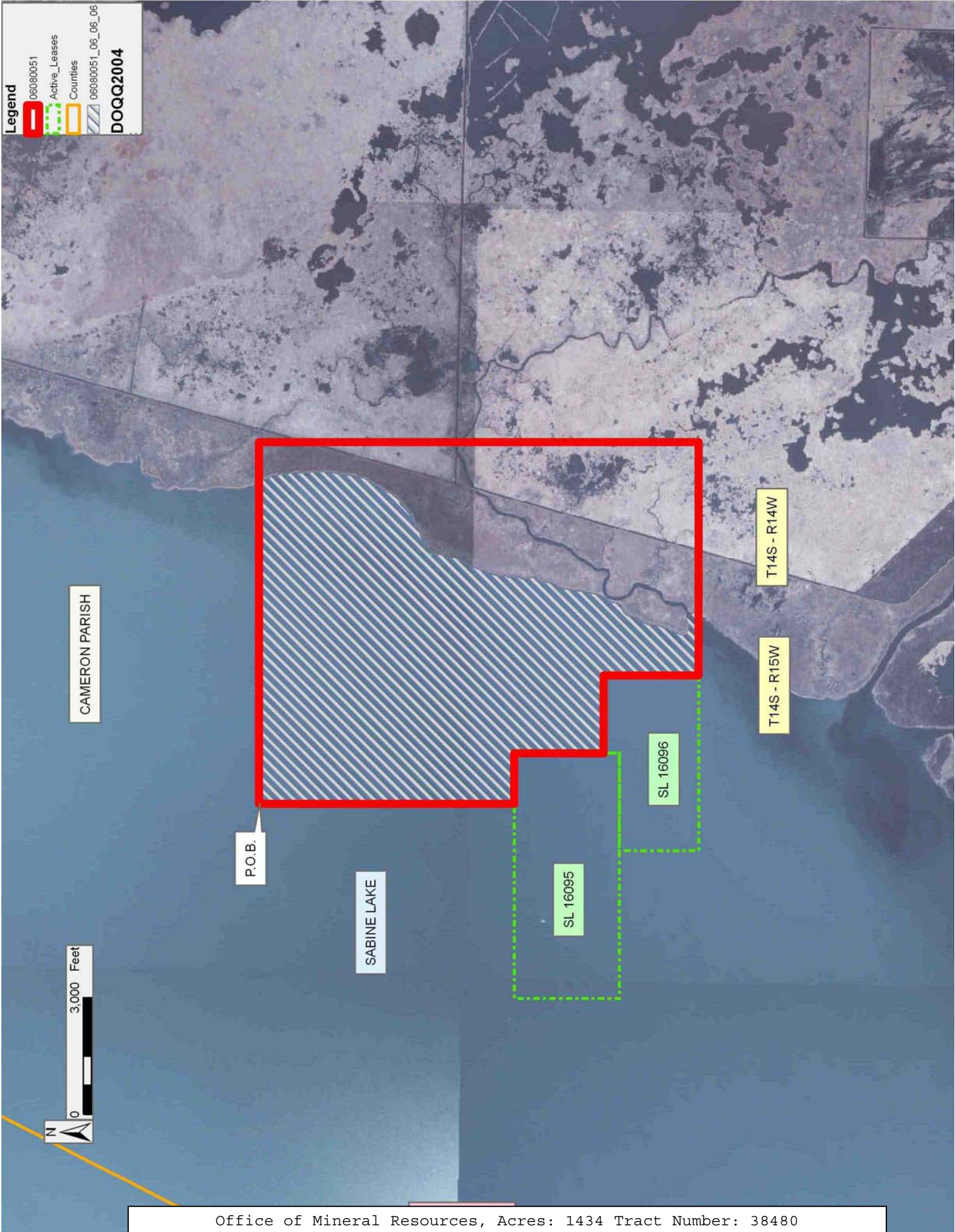
Applicant: JIL EXPLORATION, INC.

Bidder	Cash Payment	Price/Acre	Rental	Oil	Gas	Other

Legend

-  060800051
-  Active_Leases
-  Counties
-  060800051_06_06_06

DOQQ2004



CAMERON PARISH

P.O.B.

SABINE LAKE

SL 16095

SL 16096

T14S - R15W

T14S - R14W



TRACT 38481 - Cameron Parish, Louisiana

All of the lands now or formerly constituting the beds and bottoms of all water bodies of every nature and description the title of which vests in the State of Louisiana, together with all islands arising therein and other lands formed by accretion or by reliction, where allowed by law, excepting tax adjudicated lands, and not presently under mineral lease and cross hatched on August 9, 2006, situated in Cameron Parish, Louisiana, and more particularly described as follows: Beginning at a point having Coordinates of X = 1,206,880.00 and Y = 437,970.00; thence West 13,120.00 feet to a point having Coordinates of X = 1,193,760.00 and Y = 437,970.00; thence North 4,061.42 feet to a point on the Texas Louisiana Boundary having Coordinates of X = 1,193,760.00 and Y = 442,031.42; thence along said Texas Louisiana Boundary the following courses: North 58 degrees 23 minutes 11 seconds East 951.15 feet to a point having Coordinates of X = 1,194,570.00 and Y = 442,530.00; North 46 degrees 43 minutes 34 seconds East 2,582.11 feet to a point having Coordinates of X = 1,196,450.00 and Y = 444,300.00; and North 56 degrees 32 minutes 33 second East 6,067.28 feet to a point having Coordinates of X = 1,201,511.90 and Y = 447,645.00; thence East 5,368.10 feet to a point having Coordinates of X = 1,206,880.00 and Y = 447,645.00; thence South 9,675.00 feet to the Point of Beginning, containing approximately **2,437.39 acres, LESS AND EXCEPT** that portion thereof, if any, located West of the boundary line between the States of Texas and Louisiana as determined by the report of the Special Master and adjudicated by the Supreme Court of the United States in litigation styled **Texas v. Louisiana, et al No. 36 Original**, or as otherwise approved by said court, all as more particularly outlined on a plat on file in the Office of Mineral Resources, Department of Natural Resources. All bearings, distances and coordinates are based on Louisiana Coordinate System of 1927, (North or South Zone), where applicable.

NOTE: The above description of the Tract nominated for lease has been provided and corrected, where required, exclusively by the nomination party. Any mineral lease selected from this Tract and awarded by the Louisiana State Mineral Board shall be without warranty of any kind, either express, implied, or statutory, including, but not limited to, the implied warranties of merchantability and fitness for a particular purpose. Should the mineral lease awarded by the Louisiana State Mineral Board be subsequently modified, cancelled or abrogated due to the existence of conflicting leases, operating agreements, private claims or other future obligations or conditions which may affect all or any portion of the leased Tract, it shall not relieve the Lessee of the obligation to pay any bonus due thereon to the Louisiana State Mineral Board, nor shall the Louisiana State Mineral Board be obligated to refund any consideration paid by the Lessor prior to such modification, cancellation, or abrogation, including, but not limited to, bonuses, rentals and royalties.

NOTE: The State of Louisiana does hereby reserve, and this lease shall be subject to, the imprescriptible right of surface use in the nature of a servitude in favor of the Department of Natural Resources, including its

Offices and Commissions, for the sole purpose of implementing, constructing, servicing and maintaining approved coastal zone management and/or restoration projects. Utilization of any and all rights derived under this lease by the mineral lessee, its agents, successors or assigns, shall not interfere with nor hinder the reasonable surface use by the Department of Natural Resources, its Offices or Commissions, as herein above reserved.

Applicant: JIL EXPLORATION, INC.

Bidder	Cash Payment	Price/Acre	Rental	Oil	Gas	Other

CAMERON PARISH

SABINE LAKE

P.O.B.



TRACT 38482 - Cameron Parish, Louisiana

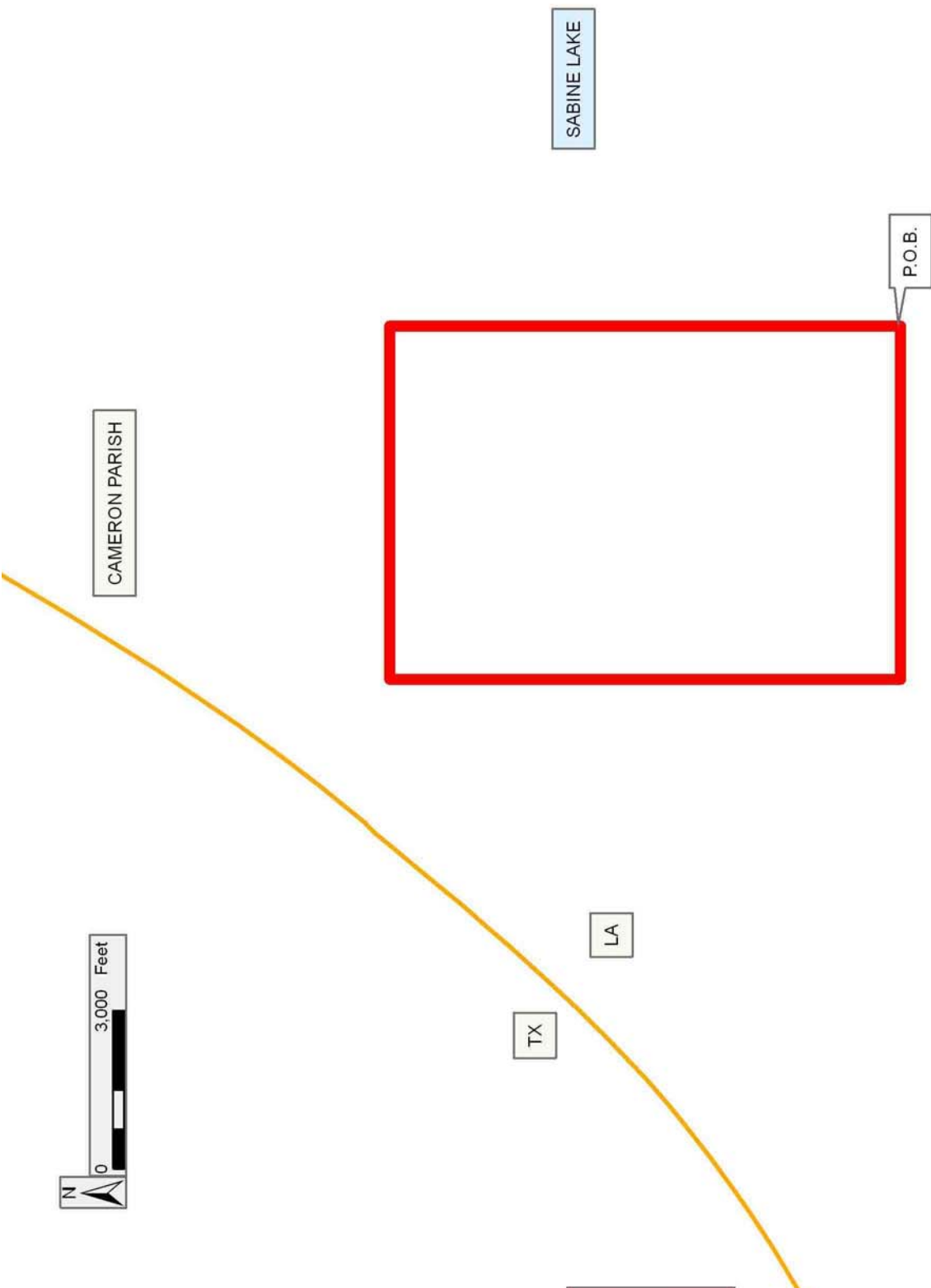
All of the lands now or formerly constituting the beds and bottoms of all water bodies of every nature and description the title of which vests in the State of Louisiana, together with all islands arising therein and other lands formed by accretion or by reliction, where allowed by law, excepting tax adjudicated lands, and not presently under mineral lease and cross hatched on August 9, 2006, situated in Cameron Parish, Louisiana, and more particularly described as follows: Beginning at a point having Coordinates of X = 1,213,575.00 and Y = 437,970.00; thence West 6,695.00 feet to a point having Coordinates of X = 1,206,880.00 and Y = 437,970.00; thence North 9,675.00 feet to a point having Coordinates of X = 1,206,880.00 and Y = 447,645.00; thence East 6,695.00 feet to a point having Coordinates of X = 1,213,575.00 and Y = 447,645.00; thence South 9,675.00 feet to the Point of Beginning, containing approximately **1,487.01 acres**, all as more particularly outlined on a plat on file in the Office of Mineral Resources, Department of Natural Resources. All bearings, distances and coordinates are based on Louisiana Coordinate System of 1927, (North or South Zone), where applicable.

NOTE: The above description of the Tract nominated for lease has been provided and corrected, where required, exclusively by the nomination party. Any mineral lease selected from this Tract and awarded by the Louisiana State Mineral Board shall be without warranty of any kind, either express, implied, or statutory, including, but not limited to, the implied warranties of merchantability and fitness for a particular purpose. Should the mineral lease awarded by the Louisiana State Mineral Board be subsequently modified, cancelled or abrogated due to the existence of conflicting leases, operating agreements, private claims or other future obligations or conditions which may affect all or any portion of the leased Tract, it shall not relieve the Lessee of the obligation to pay any bonus due thereon to the Louisiana State Mineral Board, nor shall the Louisiana State Mineral Board be obligated to refund any consideration paid by the Lessor prior to such modification, cancellation, or abrogation, including, but not limited to, bonuses, rentals and royalties.

NOTE: The State of Louisiana does hereby reserve, and this lease shall be subject to, the imprescriptible right of surface use in the nature of a servitude in favor of the Department of Natural Resources, including its Offices and Commissions, for the sole purpose of implementing, constructing, servicing and maintaining approved coastal zone management and/or restoration projects. Utilization of any and all rights derived under this lease by the mineral lessee, its agents, successors or assigns, shall not interfere with nor hinder the reasonable surface use by the Department of Natural Resources, its Offices or Commissions, as herein above reserved.

Applicant: JIL EXPLORATION, INC.

Bidder	Cash Payment	Price/Acre	Rental	Oil	Gas	Other



TRACT 38483 - Cameron Parish, Louisiana

All of the lands now or formerly constituting the beds and bottoms of all water bodies of every nature and description the title of which vests in the State of Louisiana, together with all islands arising therein and other lands formed by accretion or by reliction, where allowed by law, excepting tax adjudicated lands, and not presently under mineral lease and cross hatched on August 9, 2006, situated in Cameron Parish, Louisiana, and more particularly described as follows: Beginning at a point having Coordinates of X = 1,213,575.00 and Y = 437,970.00; thence North 9,675.00 feet to a point having Coordinates of X = 1,213,575.00 and Y = 447,645.00; thence East 1,325.00 feet to the Northwest corner of State Lease No. 16095 having Coordinates of X = 1,214,900.00 and Y = 447,645.00; thence along the boundary of said State Lease No. 16095 the following courses: South 2,700.00 feet to a point having Coordinates of X = 1,214,900.00 and Y = 444,945.00 and East 3,800.00 feet to the Northwest corner of State Lease No. 16096, having Coordinates of X = 1,218,700.00 and Y = 444,945.00; thence along the boundary of said State Lease No. 16096 the following courses: South 2,043.82 feet to a point having Coordinates of X = 1,218,700.00 and Y = 442,901.18 and East 4,500.00 feet to a point having Coordinates of X = 1,223,200.00 and Y = 442,901.18; thence East 6,000.00 feet to a point having Coordinates of X = 1,229,200.00 and Y = 442,901.18; thence South 4,931.18 feet to a point having Coordinates of X = 1,229,200.00 and Y = 437,970.00; thence West 15,625.00 feet to the point of beginning, **LESS AND EXCEPT** that portion of the Sabine National Wildlife Refuge that falls within the above described tract, containing approximately **1,413 acres**, all as more particularly outlined on a plat on file in the Office of Mineral Resources, Department of Natural Resources. All bearings, distances and coordinates are based on Louisiana Coordinate System of 1927, (North or South Zone), where applicable.

NOTE: The above description of the Tract nominated for lease has been provided and corrected, where required, exclusively by the nomination party. Any mineral lease selected from this Tract and awarded by the Louisiana State Mineral Board shall be without warranty of any kind, either express, implied, or statutory, including, but not limited to, the implied warranties of merchantability and fitness for a particular purpose. Should the mineral lease awarded by the Louisiana State Mineral Board be subsequently modified, cancelled or abrogated due to the existence of conflicting leases, operating agreements, private claims or other future obligations or conditions which may affect all or any portion of the leased Tract, it shall not relieve the Lessee of the obligation to pay any bonus due thereon to the Louisiana State Mineral Board, nor shall the Louisiana State Mineral Board be obligated to refund any consideration paid by the Lessor prior to such modification, cancellation, or abrogation, including, but not limited to, bonuses, rentals and royalties.

NOTE: The State of Louisiana does hereby reserve, and this lease shall be subject to, the imprescriptible right of surface use in the nature of a servitude in favor of the Department of Natural Resources, including its

Offices and Commissions, for the sole purpose of implementing, constructing, servicing and maintaining approved coastal zone management and/or restoration projects. Utilization of any and all rights derived under this lease by the mineral lessee, its agents, successors or assigns, shall not interfere with nor hinder the reasonable surface use by the Department of Natural Resources, its Offices or Commissions, as herein above reserved.

Applicant: JIL EXPLORATION, INC.

Bidder	Cash Payment	Price/Acre	Rental	Oil	Gas	Other

Legend

- 060800048
- Active_Leases
- Counties
- 060800048_06_06_06
- DOQQ2004**

