

TRACT 38454 - Tensas Parish, Louisiana





All of the lands now or formerly constituting the beds and bottoms of all water bodies of every nature and description the title of which vests in the State of Louisiana, together with all islands arising therein and other lands formed by accretion or by reliction, where allowed by law, excepting tax adjudicated lands, and not presently under mineral lease and cross hatched on August 9, 2006, situated in Tensas Parish, Louisiana, and more particularly described as follows: Beginning at a point having Coordinates of X = 2,391,000.00 and Y = 539,900.00; thence East 16,000.00 feet to a point having Coordinates of X = 2,407,000.00 and Y = 539,900.00; thence South 16,000.00 feet to a point having Coordinates of X = 2,407,000.00 and Y = 523,900.00; thence West 16,000.00 feet to a point having Coordinates of X = 2,391,000.00 and Y = 523,900.00; thence North 16,000.00 feet to the point of beginning, containing approximately **230 acres**, all as more particularly outlined on a plat on file in the Office of Mineral Resources, Department of Natural Resources. All bearings, distances and coordinates are based on Louisiana Coordinate System of 1927, (North or South Zone), where applicable.

NOTE: The above description of the Tract nominated for lease has been provided and corrected, where required, exclusively by the nomination party. Any mineral lease selected from this Tract and awarded by the Louisiana State Mineral Board shall be without warranty of any kind, either express, implied, or statutory, including, but not limited to, the implied warranties of merchantability and fitness for a particular purpose. Should the mineral lease awarded by the Louisiana State Mineral Board be subsequently modified, cancelled or abrogated due to the existence of conflicting leases, operating agreements, private claims or other future obligations or conditions which may affect all or any portion of the leased Tract, it shall not relieve the Lessee of the obligation to pay any bonus due thereon to the Louisiana State Mineral Board, nor shall the Louisiana State Mineral Board be obligated to refund any consideration paid by the Lessor prior to such modification, cancellation, or abrogation, including, but not limited to, bonuses, rentals and royalties.

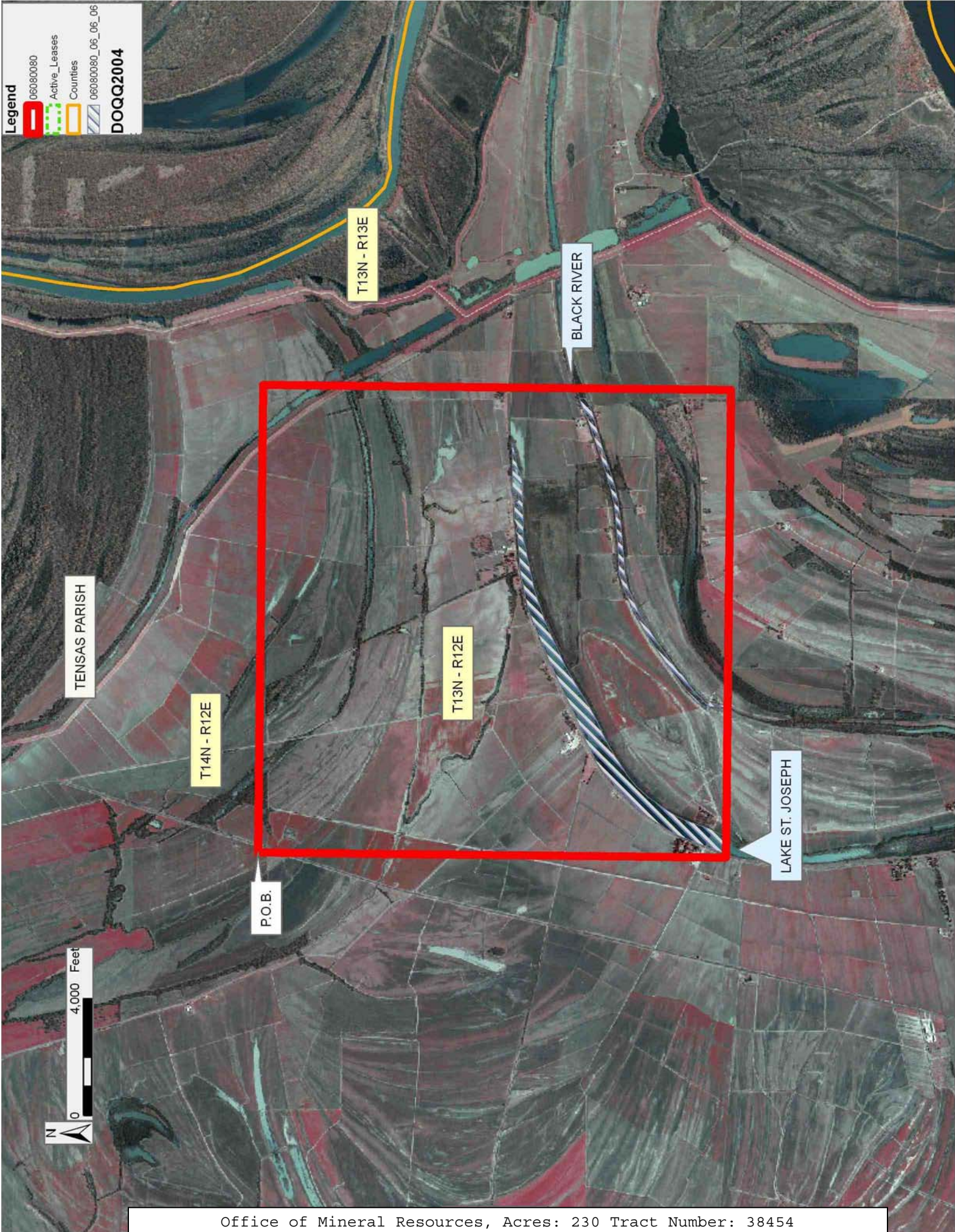
Applicant: LOUISIANA MINERALS MANAGEMENT

Bidder	Cash Payment	Price/Acre	Rental	Oil	Gas	Other

Legend

-  060800080
-  Active_Leases
-  Counties
-  060800080_06_06_06

DOQQ2004



TRACT 38455 - Tensas Parish, Louisiana





All of the lands now or formerly constituting the beds and bottoms of all water bodies of every nature and description the title of which vests in the State of Louisiana, together with all islands arising therein and other lands formed by accretion or by reliction, where allowed by law, excepting tax adjudicated lands, and not presently under mineral lease and cross hatched on August 9, 2006, situated in Tensas Parish, Louisiana, and more particularly described as follows: Beginning at a point having Coordinates of X = 2,391,000.00 and Y = 523,900.00; thence East 16,000.00 feet to a point having Coordinates of X = 2,407,000.00 and Y = 523,900.00; thence South 16,000.00 feet to a point having Coordinates of X = 2,407,000.00 and Y = 507,900.00; thence West 16,000.00 feet to a point having Coordinates of X = 2,391,000.00 and Y = 507,900.00; thence North 16,000.00 feet to the point of beginning, containing approximately **440 acres**, all as more particularly outlined on a plat on file in the Office of Mineral Resources, Department of Natural Resources. All bearings, distances and coordinates are based on Louisiana Coordinate System of 1927, (North or South Zone), where applicable.

NOTE: The above description of the Tract nominated for lease has been provided and corrected, where required, exclusively by the nomination party. Any mineral lease selected from this Tract and awarded by the Louisiana State Mineral Board shall be without warranty of any kind, either express, implied, or statutory, including, but not limited to, the implied warranties of merchantability and fitness for a particular purpose. Should the mineral lease awarded by the Louisiana State Mineral Board be subsequently modified, cancelled or abrogated due to the existence of conflicting leases, operating agreements, private claims or other future obligations or conditions which may affect all or any portion of the leased Tract, it shall not relieve the Lessee of the obligation to pay any bonus due thereon to the Louisiana State Mineral Board, nor shall the Louisiana State Mineral Board be obligated to refund any consideration paid by the Lessor prior to such modification, cancellation, or abrogation, including, but not limited to, bonuses, rentals and royalties.

Applicant: LOUISIANA MINERALS MANAGEMENT

Bidder	Cash Payment	Price/Acre	Rental	Oil	Gas	Other

Legend

-  060800081
-  Active_Leases
-  Counties
-  060800081_06_06_06

DOQQ2004



TENSAS PARISH

T13N - R12E

T13N - R13E

JOHNSON LAKE

BLACK RIVER

T12N - R12E

LAKE ST. JOSEPH

P.O.B.



TRACT 38456 - Tensas Parish, Louisiana

All of the lands now or formerly constituting the beds and bottoms of all water bodies of every nature and description the title of which vests in the State of Louisiana, together with all islands arising therein and other lands formed by accretion or by reliction, where allowed by law, excepting tax adjudicated lands, and not presently under mineral lease and cross hatched on August 9, 2006, situated in Tensas Parish, Louisiana, and more particularly described as follows: Beginning at a point having Coordinates of X = 2,391,000.00 and Y = 507,900.00; thence East 16,000.00 feet to a point having Coordinates of X = 2,407,000.00 and Y = 507,900.00; thence South 16,000.00 feet to a point having Coordinates of X = 2,407,000.00 and Y = 491,900.00; thence West 16,000.00 feet to a point having Coordinates of X = 2,391,000.00 and Y = 491,900.00; thence North 16,000.00 feet to the point of beginning, **LESS AND EXCEPT** any School Indemnity lands which may lie within the above described tract, containing approximately **580 acres**, all as more particularly outlined on a plat on file in the Office of Mineral Resources, Department of Natural Resources. All bearings, distances and coordinates are based on Louisiana Coordinate System of 1927, (North or South Zone), where applicable.

NOTE: The above description of the Tract nominated for lease has been provided and corrected, where required, exclusively by the nomination party. Any mineral lease selected from this Tract and awarded by the Louisiana State Mineral Board shall be without warranty of any kind, either express, implied, or statutory, including, but not limited to, the implied warranties of merchantability and fitness for a particular purpose. Should the mineral lease awarded by the Louisiana State Mineral Board be subsequently modified, cancelled or abrogated due to the existence of conflicting leases, operating agreements, private claims or other future obligations or conditions which may affect all or any portion of the leased Tract, it shall not relieve the Lessee of the obligation to pay any bonus due thereon to the Louisiana State Mineral Board, nor shall the Louisiana State Mineral Board be obligated to refund any consideration paid by the Lessor prior to such modification, cancellation, or abrogation, including, but not limited to, bonuses, rentals and royalties.

Applicant: LOUISIANA MINERALS MANAGEMENT

Bidder	Cash Payment	Price/Acre	Rental	Oil	Gas	Other

Legend

- 060800076
- Active_Leases
- Counties
- 060800076_06_05_06
- DOQQ2004



TENSAS PARISH

T13N - R12E

PHELPS BAYOU

P.O.B.

T12N - R12E

LAKE ST. JOSEPH

T12N - R13E

T13N - R13E



TRACT 38457 - Tensas Parish, Louisiana

The following described property consisting of School Indemnity Lands, located in Tensas Parish, Louisiana, not presently under mineral lease on August 9, 2006, and described as follows: Lots 5, 6, and 7, all in Section 9, Township 12 North, Range 12 East, Tensas Parish, Louisiana, containing approximately **169.68 acres**, all as more particularly outlined on a plat on file in the Office of Mineral Resources, Department of Natural Resources. All bearings, distances and coordinates are based on the Louisiana Coordinate System of 1927 (North or South Zone) where applicable.

NOTE: The State Mineral Board is acting pursuant to La. R.S. 30:121-136 and pursuant to all other applicable statutes, and the proceeds derived from any lease that is awarded shall be paid to the Office of Mineral Resources and by it remitted to the State Treasurer for disposition in accordance with requirements of law relating to oil, gas and mineral leases of School Indemnity Lands.

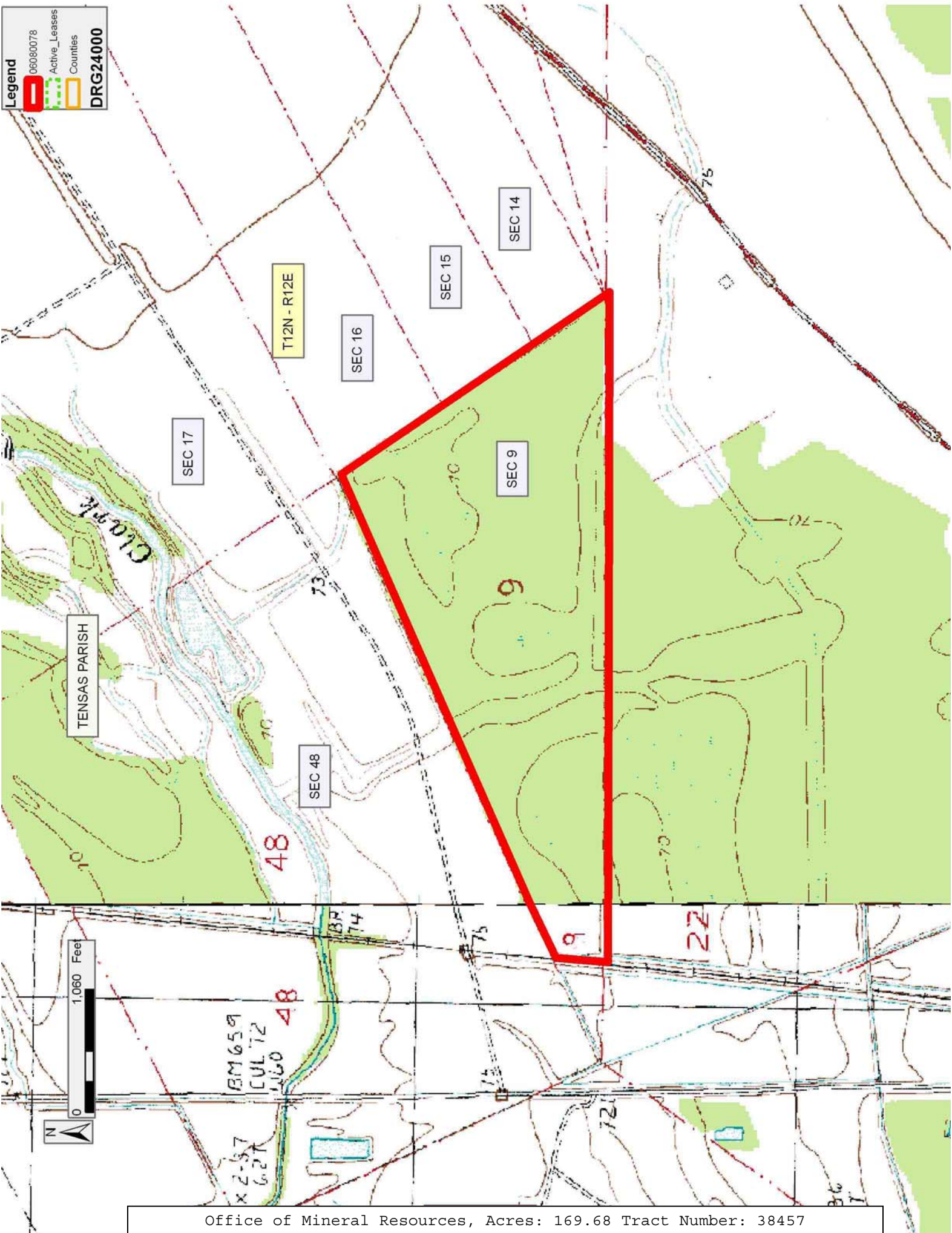
NOTE: The above description of the Tract nominated for lease has been provided and corrected, where required, exclusively by the nomination party. Any mineral lease selected from this Tract and awarded by the Louisiana State Mineral Board shall be without warranty of any kind, either express, implied, or statutory, including, but not limited to, the implied warranties of merchantability and fitness for a particular purpose. Should the mineral lease awarded by the Louisiana State Mineral Board be subsequently modified, cancelled or abrogated due to the existence of conflicting leases, operating agreements, private claims or other future obligations or conditions which may affect all or any portion of the leased Tract, it shall not relieve the Lessee of the obligation to pay any bonus due thereon to the Louisiana State Mineral Board, nor shall the Louisiana State Mineral Board be obligated to refund any consideration paid by the Lessor prior to such modification, cancellation, or abrogation, including, but not limited to, bonuses, rentals and royalties.

Applicant: LOUISIANA MINERALS MANAGEMENT

Bidder	Cash Payment	Price/Acre	Rental	Oil	Gas	Other

Legend

- 06080078
- Active_Leases
- Counties
- DRG24000



Office of Mineral Resources, Acres: 169.68 Tract Number: 38457

TRACT 38458 - Tensas Parish, Louisiana




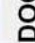
All of the lands now or formerly constituting the beds and bottoms of all water bodies of every nature and description the title of which vests in the State of Louisiana, together with all islands arising therein and other lands formed by accretion or by reliction, where allowed by law, excepting tax adjudicated lands, and not presently under mineral lease and cross hatched on August 9, 2006, situated in Tensas Parish, Louisiana, and more particularly described as follows: Beginning at a point having Coordinates of X = 2,375,000.00 and Y = 491,900.00; thence East 16,000.00 feet to a point having Coordinates of X = 2,391,000.00 and Y = 491,900.00; thence South 16,000.00 feet to a point having Coordinates of X = 2,391,000.00 and Y = 475,900.00; thence West 16,000.00 feet to a point having Coordinates of X = 2,375,000.00 and Y = 475,900.00; thence North 16,000.00 feet to the point of beginning, containing approximately **747 acres**, all as more particularly outlined on a plat on file in the Office of Mineral Resources, Department of Natural Resources. All bearings, distances and coordinates are based on Louisiana Coordinate System of 1927, (North or South Zone), where applicable.

NOTE: The above description of the Tract nominated for lease has been provided and corrected, where required, exclusively by the nomination party. Any mineral lease selected from this Tract and awarded by the Louisiana State Mineral Board shall be without warranty of any kind, either express, implied, or statutory, including, but not limited to, the implied warranties of merchantability and fitness for a particular purpose. Should the mineral lease awarded by the Louisiana State Mineral Board be subsequently modified, cancelled or abrogated due to the existence of conflicting leases, operating agreements, private claims or other future obligations or conditions which may affect all or any portion of the leased Tract, it shall not relieve the Lessee of the obligation to pay any bonus due thereon to the Louisiana State Mineral Board, nor shall the Louisiana State Mineral Board be obligated to refund any consideration paid by the Lessor prior to such modification, cancellation, or abrogation, including, but not limited to, bonuses, rentals and royalties.

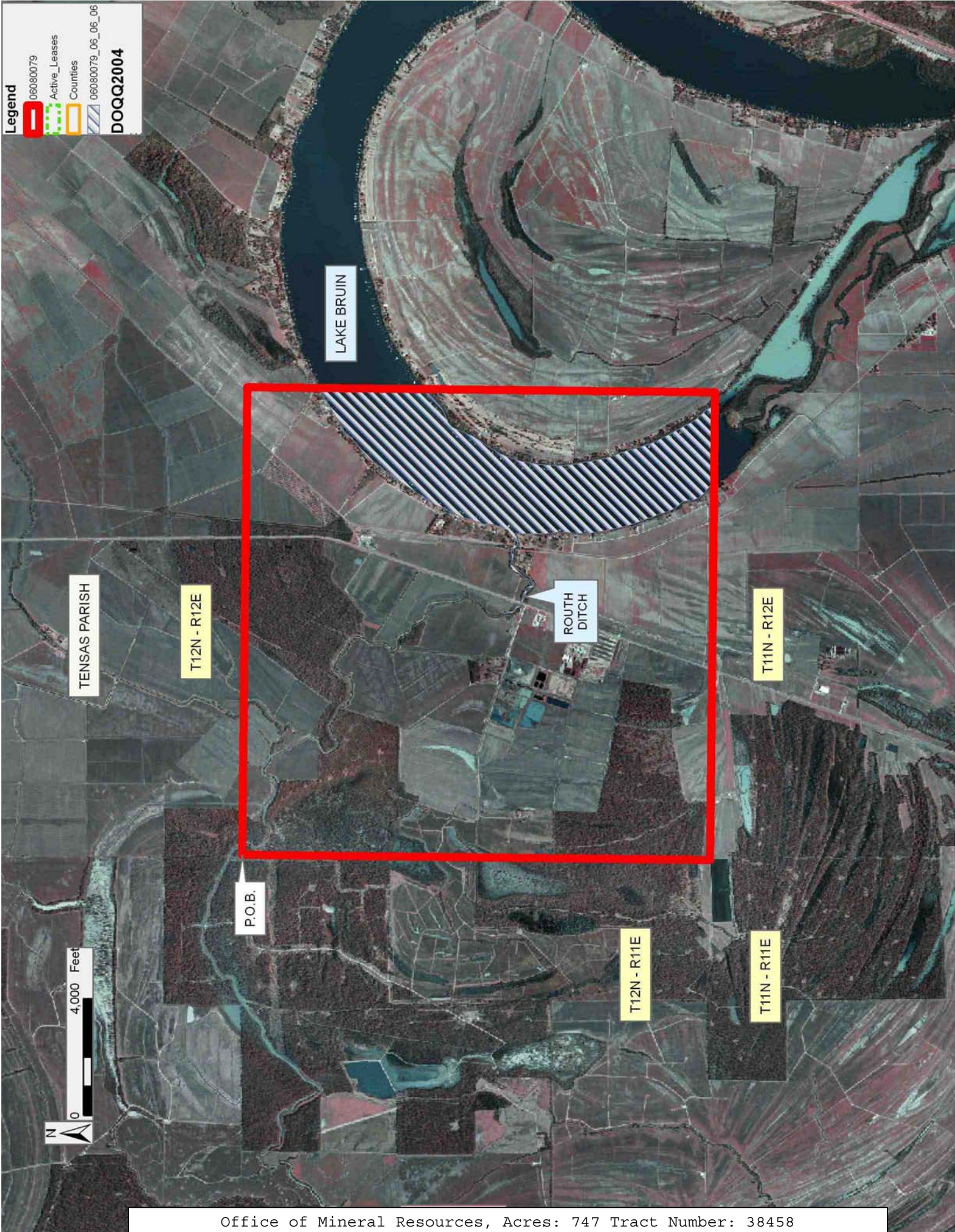
Applicant: LOUISIANA MINERALS MANAGEMENT

Bidder	Cash Payment	Price/Acre	Rental	Oil	Gas	Other

Legend

-  06080079
-  Active_Leases
-  Counties
-  06080079_06_06_06

DOQQ2004



TRACT 38459 - Tensas Parish, Louisiana

All of the lands now or formerly constituting the beds and bottoms of all water bodies of every nature and description the title of which vests in the State of Louisiana, together with all islands arising therein and other lands formed by accretion or by reliction, where allowed by law, excepting tax adjudicated lands, and not presently under mineral lease and cross hatched on August 9, 2006, situated in Tensas Parish, Louisiana, and more particularly described as follows: Beginning at a point having Coordinates of X = 2,391,000.00 and Y = 491,900.00; thence East 16,000.00 feet to a point having Coordinates of X = 2,407,000.00 and Y = 491,900.00; thence South 16,000.00 feet to a point having Coordinates of X = 2,407,000.00 and Y = 475,900.00; thence West 16,000.00 feet to a point having Coordinates of X = 2,391,000.00 and Y = 475,900.00; thence North 16,000.00 feet to the point of beginning, containing approximately **1,543 acres**, all as more particularly outlined on a plat on file in the Office of Mineral Resources, Department of Natural Resources. All bearings, distances and coordinates are based on Louisiana Coordinate System of 1927, (North or South Zone), where applicable.

NOTE: The above description of the Tract nominated for lease has been provided and corrected, where required, exclusively by the nomination party. Any mineral lease selected from this Tract and awarded by the Louisiana State Mineral Board shall be without warranty of any kind, either express, implied, or statutory, including, but not limited to, the implied warranties of merchantability and fitness for a particular purpose. Should the mineral lease awarded by the Louisiana State Mineral Board be subsequently modified, cancelled or abrogated due to the existence of conflicting leases, operating agreements, private claims or other future obligations or conditions which may affect all or any portion of the leased Tract, it shall not relieve the Lessee of the obligation to pay any bonus due thereon to the Louisiana State Mineral Board, nor shall the Louisiana State Mineral Board be obligated to refund any consideration paid by the Lessor prior to such modification, cancellation, or abrogation, including, but not limited to, bonuses, rentals and royalties.

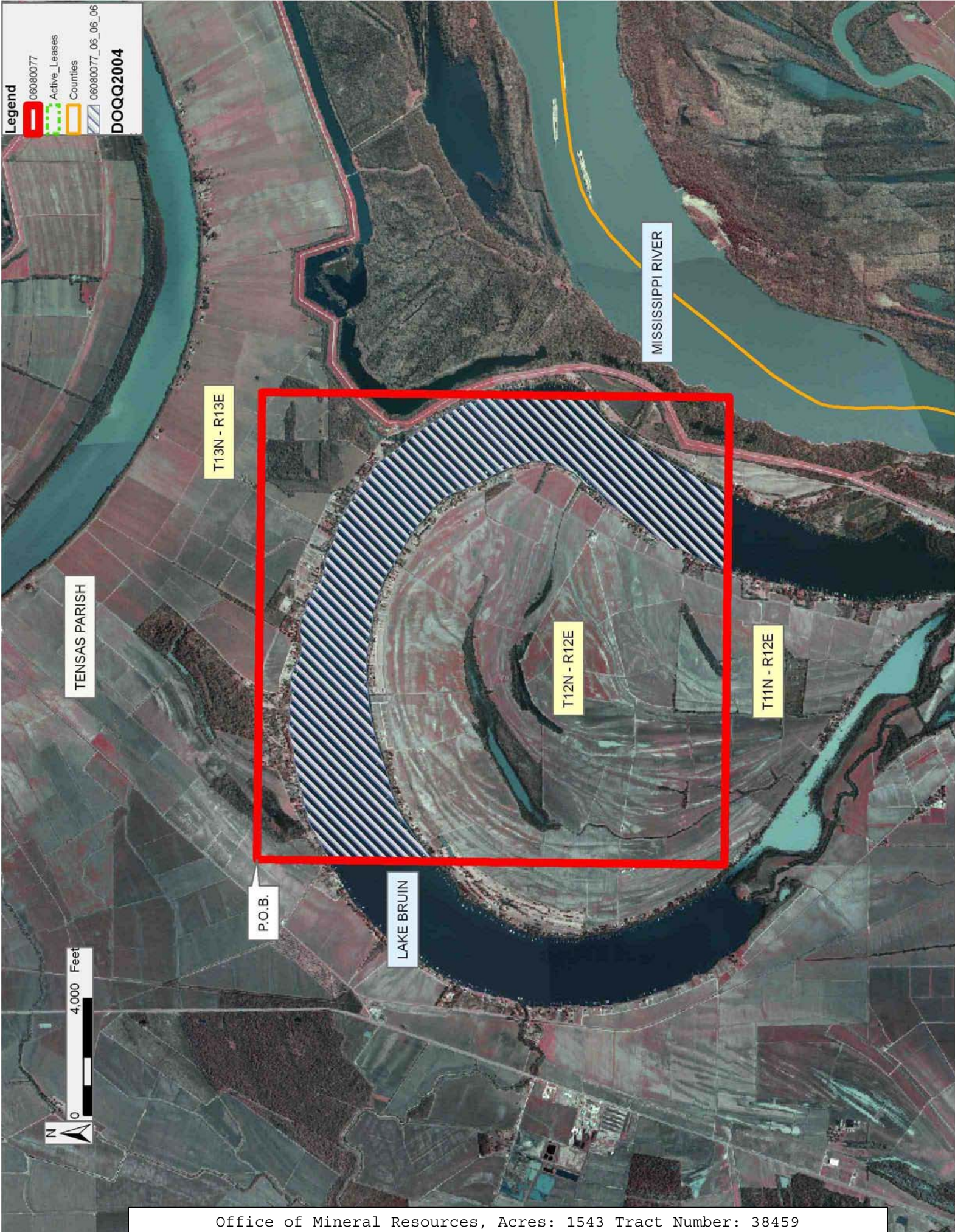
Applicant: LOUISIANA MINERALS MANAGEMENT

Bidder	Cash Payment	Price/Acre	Rental	Oil	Gas	Other

Legend

- 06080077
- Active_Leases
- Counties
- 06080077_06_06_06

DOQQ2004



TRACT 38460 - Sabine Parish, Louisiana






All of the lands now or formerly constituting the beds and bottoms of all water bodies of every nature and description the title of which vests in the State of Louisiana, together with all islands arising therein and other lands formed by accretion or by reliction, where allowed by law, excepting tax adjudicated lands, and not presently under mineral lease and cross hatched on August 9, 2006, situated in Sabine Parish, Louisiana, and more particularly described as follows: Beginning at a point having Coordinates of X = 1,598,900.00 and Y = 368,250.00; thence South 11,500.00 feet to a point having Coordinates of X = 1,598,900.00 and Y = 356,750.00; thence West 14,500.00 feet to a point having Coordinates of X = 1,584,400.00 and Y = 356,750.00; thence North 11,500.00 feet to a point having Coordinates of X = 1,584,400.00 and Y = 368,250.00; thence East 14,500.00 feet to the point of beginning, containing approximately **63 acres, LESS AND EXCEPT** that portion thereof, if any, located West of the boundary line between the States of Texas and Louisiana as determined by the report of the Special Master and adjudicated by the Supreme Court of the United States in litigation styled **Texas v. Louisiana, et al No. 36 Original**, or as otherwise approved by said court, all as more particularly outlined on a plat on file in the Office of Mineral Resources, Department of Natural Resources. All bearings, distances and coordinates are based on Louisiana Coordinate System of 1927, (North or South Zone), where applicable.

NOTE: The above description of the Tract nominated for lease has been provided and corrected, where required, exclusively by the nomination party. Any mineral lease selected from this Tract and awarded by the Louisiana State Mineral Board shall be without warranty of any kind, either express, implied, or statutory, including, but not limited to, the implied warranties of merchantability and fitness for a particular purpose. Should the mineral lease awarded by the Louisiana State Mineral Board be subsequently modified, cancelled or abrogated due to the existence of conflicting leases, operating agreements, private claims or other future obligations or conditions which may affect all or any portion of the leased Tract, it shall not relieve the Lessee of the obligation to pay any bonus due thereon to the Louisiana State Mineral Board, nor shall the Louisiana State Mineral Board be obligated to refund any consideration paid by the Lessor prior to such modification, cancellation, or abrogation, including, but not limited to, bonuses, rentals and royalties.

Applicant: B J M W, LLC.

Bidder	Cash Payment	Price/Acre	Rental	Oil	Gas	Other

Legend

-  06080017
-  Blocks
-  Active_Leases
-  Counties
-  06080017_06_09_06

DOQQ2004

T8N - R14W

SABINE PARISH

P.O.B.

SABINE RIVER

LA

TX



TRACT 38461 - Sabine Parish, Louisiana





All of the lands now or formerly constituting the beds and bottoms of all water bodies of every nature and description the title of which vests in the State of Louisiana, together with all islands arising therein and other lands formed by accretion or by reliction, where allowed by law, excepting tax adjudicated lands, and not presently under mineral lease and cross hatched on August 9, 2006, situated in Sabine Parish, Louisiana, and more particularly described as follows: Beginning at a point having Coordinates of X = 1,598,900.00 and Y = 356,750.00; thence South 11,500.00 feet to a point having Coordinates of X = 1,598,900.00 and Y = 345,250.00; thence West 14,500.00 feet to a point having Coordinates of X = 1,584,400.00 and Y = 345,250.00; thence North 11,500.00 feet to a point having Coordinates of X = 1,584,400.00 and Y = 356,750.00; thence East 14,500.00 feet to the point of beginning, containing approximately **82 acres, LESS AND EXCEPT** that portion thereof, if any, located West of the boundary line between the States of Texas and Louisiana as determined by the report of the Special Master and adjudicated by the Supreme Court of the United States in litigation styled **Texas v. Louisiana, et al No. 36 Original**, or as otherwise approved by said court, all as more particularly outlined on a plat on file in the Office of Mineral Resources, Department of Natural Resources. All bearings, distances and coordinates are based on Louisiana Coordinate System of 1927, (North or South Zone), where applicable.

NOTE: The above description of the Tract nominated for lease has been provided and corrected, where required, exclusively by the nomination party. Any mineral lease selected from this Tract and awarded by the Louisiana State Mineral Board shall be without warranty of any kind, either express, implied, or statutory, including, but not limited to, the implied warranties of merchantability and fitness for a particular purpose. Should the mineral lease awarded by the Louisiana State Mineral Board be subsequently modified, cancelled or abrogated due to the existence of conflicting leases, operating agreements, private claims or other future obligations or conditions which may affect all or any portion of the leased Tract, it shall not relieve the Lessee of the obligation to pay any bonus due thereon to the Louisiana State Mineral Board, nor shall the Louisiana State Mineral Board be obligated to refund any consideration paid by the Lessor prior to such modification, cancellation, or abrogation, including, but not limited to, bonuses, rentals and royalties.

Applicant: B J M W, LLC.

Bidder	Cash Payment	Price/Acre	Rental	Oil	Gas	Other

Legend

-  060800016
-  Active_Leases
-  Counties
-  060800016_06_09_06

DOQQ2004



TRACT 38462 - St. Martin Parish, Louisiana

All of the lands now or formerly constituting the beds and bottoms of all water bodies of every nature and description the title of which vests in the State of Louisiana, together with all islands arising therein and other lands formed by accretion or by reliction, where allowed by law, excepting tax adjudicated lands, and not presently under mineral lease and cross hatched on August 9, 2006, situated in St. Martin Parish, Louisiana, and more particularly described as follows: Beginning at a point having Coordinates of X = 1,890,147.80 and Y = 579,614.33; thence East 17,581.12 feet to a point having Coordinates of X = 1,907,728.93 and Y = 579,614.33; thence South 18,000.00 feet to a point having Coordinates of X = 1,907,728.93 and Y = 561,614.33; thence West 13,546.60 feet to a point having Coordinates of X = 1,894,182.32 and Y = 561,614.33; thence Northerly approximately 7,845 feet to the Southeast corner of State Lease No. 3435, as amended; thence along the boundaries of said State Lease No. 3435 the following courses: Northerly, Northwesterly, Westerly, and Southwesterly to a point on the North boundary of said State Lease No. 3435 having Coordinate of X = 1,890,147.80; thence North approximately 7,144 feet to the point of beginning, **LESS AND EXCEPT** any portion of State Lease No. 2024, as amended, and State Lease No. 3435 that may lie within the above described tract, containing approximately **38 acres**, all as more particularly outlined on a plat on file in the Office of Mineral Resources, Department of Natural Resources. All bearings, distances and coordinates are based on Louisiana Coordinate System of 1927, (North or South Zone), where applicable.

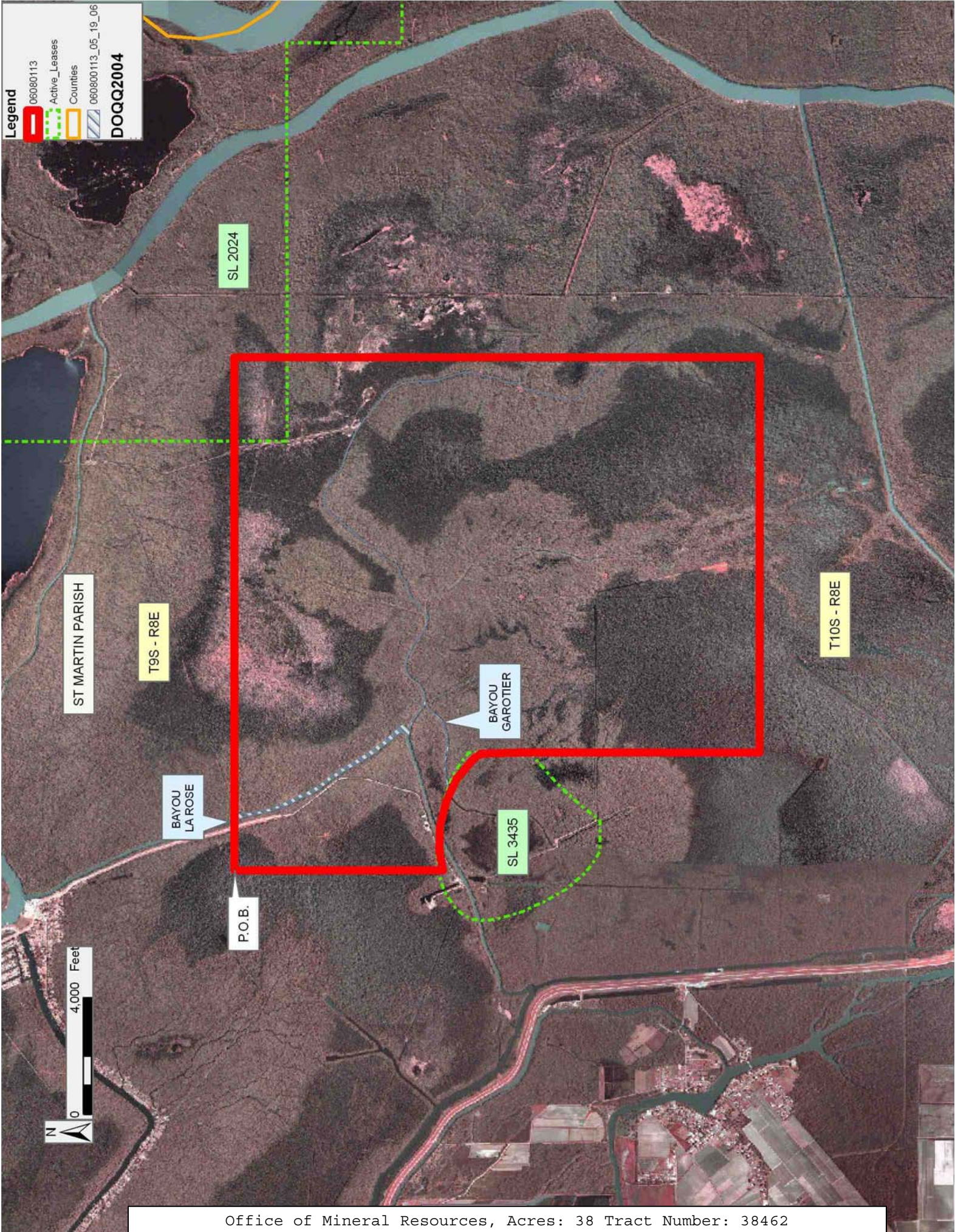
NOTE: The above description of the Tract nominated for lease has been provided and corrected, where required, exclusively by the nomination party. Any mineral lease selected from this Tract and awarded by the Louisiana State Mineral Board shall be without warranty of any kind, either express, implied, or statutory, including, but not limited to, the implied warranties of merchantability and fitness for a particular purpose. Should the mineral lease awarded by the Louisiana State Mineral Board be subsequently modified, cancelled or abrogated due to the existence of conflicting leases, operating agreements, private claims or other future obligations or conditions which may affect all or any portion of the leased Tract, it shall not relieve the Lessee of the obligation to pay any bonus due thereon to the Louisiana State Mineral Board, nor shall the Louisiana State Mineral Board be obligated to refund any consideration paid by the Lessor prior to such modification, cancellation, or abrogation, including, but not limited to, bonuses, rentals and royalties.

Applicant: LEE SONNIER

Bidder	Cash Payment	Price/Acre	Rental	Oil	Gas	Other

Legend

- 060800113
- Active_Leases
- Counties
- 060800113_05_19_06
- DOQQ2004**



SL 2024

ST MARTIN PARISH

T9S - R8E

T10S - R8E

BAYOU GAROTIER

BAYOU LA ROSE

SL 3435

P.O.B.



TRACT 38463 - Portion of Block 23, Chandeleur Sound Addition Area, Revised, St. Bernard Parish, Louisiana

All of the lands now or formerly constituting the beds and bottoms of all water bodies of every nature and description the title of which vests in the State of Louisiana, together with all islands arising therein and other lands formed by accretion or by reliction, where allowed by law, excepting tax adjudicated lands, and not presently under mineral lease and cross hatched on August 9, 2006, situated in St. Bernard Parish, Louisiana, and more particularly described as follows: Beginning at a point having Coordinates of X = 2,624,992.00 and Y = 500,334.00; thence West 16,091.00 feet to a point having Coordinates of X = 2,608,901.00 and Y = 500,334.00; thence North 9,309.00 feet to a point having Coordinates of X = 2,608,901.00 and Y = 509,643.00; thence East 16,091.00 feet to a point having Coordinates of X = 2,624,992.00 and Y = 509,643.00; thence South 9,309.00 feet to the point of beginning, containing approximately **2,400 acres**, all as more particularly outlined on a plat on file in the Office of Mineral Resources, Department of Natural Resources. All bearings, distances and coordinates are based on Louisiana Coordinate System of 1927, (North or South Zone), where applicable.

NOTE: The above description of the Tract nominated for lease has been provided and corrected, where required, exclusively by the nomination party. Any mineral lease selected from this Tract and awarded by the Louisiana State Mineral Board shall be without warranty of any kind, either express, implied, or statutory, including, but not limited to, the implied warranties of merchantability and fitness for a particular purpose. Should the mineral lease awarded by the Louisiana State Mineral Board be subsequently modified, cancelled or abrogated due to the existence of conflicting leases, operating agreements, private claims or other future obligations or conditions which may affect all or any portion of the leased Tract, it shall not relieve the Lessee of the obligation to pay any bonus due thereon to the Louisiana State Mineral Board, nor shall the Louisiana State Mineral Board be obligated to refund any consideration paid by the Lessor prior to such modification, cancellation, or abrogation, including, but not limited to, bonuses, rentals and royalties.

NOTE: The Office of Mineral Resources will require a minimum bonus of \$230 per acre and a minimum royalty of 23%.






NOTE: The State of Louisiana does hereby reserve, and this lease shall be subject to, the imprescriptible right of surface use in the nature of a servitude in favor of the Department of Natural Resources, including its Offices and Commissions, for the sole purpose of implementing, constructing, servicing and maintaining approved coastal zone management and/or restoration projects. Utilization of any and all rights derived under this lease by the mineral lessee, its agents, successors or assigns, shall not interfere with nor hinder the reasonable surface use by the Department of Natural Resources, its Offices or Commissions, as herein above reserved.

NOTE: The Department of Wildlife and Fisheries has designated certain areas in the coastal waters of the State of Louisiana as Oyster Seed Bed Areas. The exact location of those Seed Bed Areas must be obtained from the Department of Wildlife and Fisheries and any work done under a mineral lease from the State of Louisiana may necessarily be conducted in conformity with the rules and regulations promulgated by the said Department of Wildlife and Fisheries for Oyster Seed Bed Areas.

Applicant: TRINITY ENERGY SERVICES, LLC

Bidder	Cash Payment	Price/Acre	Rental	Oil	Gas	Other

Legend

-  06080088
-  Blocks
-  Active_Leases
-  Counties
-  06080088_06_07_06

DOQQ2004

