

TRACT 38443 - Portion of Block 27, Breton Sound Area, Plaquemines Parish, Louisiana

The beds and bottoms of all water bodies belonging to the State of Louisiana located in Block 27, Breton Sound Area, together with any present lands formed by accretion to the shoreline or islands formed therein, located in Plaquemines Parish, Louisiana, owned by and not presently under mineral lease as of August 9, 2006, from the State of Louisiana, the geographical area of which is more fully described as follows: Beginning at the Southeast corner of Block 27, Breton Sound Area, having Coordinates of X = 2,723,850.00 and Y = 322,330.00; thence West 5,840.02 feet along the South line of said Block 27 to a point having Coordinates of X = 2,718,009.98 and Y = 322,330.00; thence Northeasterly on a straight line to a point having Coordinates of X = 2,720,696.00 and Y = 326,779.00; thence Northeasterly on a straight line to a point having Coordinates of X = 2,722,321.00 and Y = 329,172.00; thence Northeasterly on a straight line to a point on the East Line of said Block 27 having Coordinates of X = 2,723,850.00 and Y = 330,739.83; thence South 8,409.83 feet along the East line of said Block 27 to the point of beginning, containing approximately **615.45 acres**, all as more particularly outlined on a plat on file in the Office of Mineral Resources, Department of Natural Resources. All bearings, distances and coordinates are based on Louisiana Coordinate System of 1927, (North or South Zone).

NOTE: The above description of the Tract nominated for lease has been provided and corrected, where required, exclusively by the nomination party. Any mineral lease selected from this Tract and awarded by the Louisiana State Mineral Board shall be without warranty of any kind, either express, implied, or statutory, including, but not limited to, the implied warranties of merchantability and fitness for a particular purpose. Should the mineral lease awarded by the Louisiana State Mineral Board be subsequently modified, cancelled or abrogated due to the existence of conflicting leases, operating agreements, private claims or other future obligations or conditions which may affect all or any portion of the leased Tract, it shall not relieve the Lessee of the obligation to pay any bonus due thereon to the Louisiana State Mineral Board, nor shall the Louisiana State Mineral Board be obligated to refund any consideration paid by the Lessor prior to such modification, cancellation, or abrogation, including, but not limited to, bonuses, rentals and royalties.

NOTE: The State of Louisiana does hereby reserve, and this lease shall be subject to, the imprescriptible right of surface use in the nature of a servitude in favor of the Department of Natural Resources, including its Offices and Commissions, for the sole purpose of implementing, constructing, servicing and maintaining approved coastal zone management and/or restoration projects. Utilization of any and all rights derived under this lease by the mineral lessee, its agents, successors or assigns, shall not interfere with nor hinder the reasonable surface use by the Department of Natural Resources, its Offices or Commissions, as herein above reserved.

Applicant: BONURA ENERGY INVESTMENTS

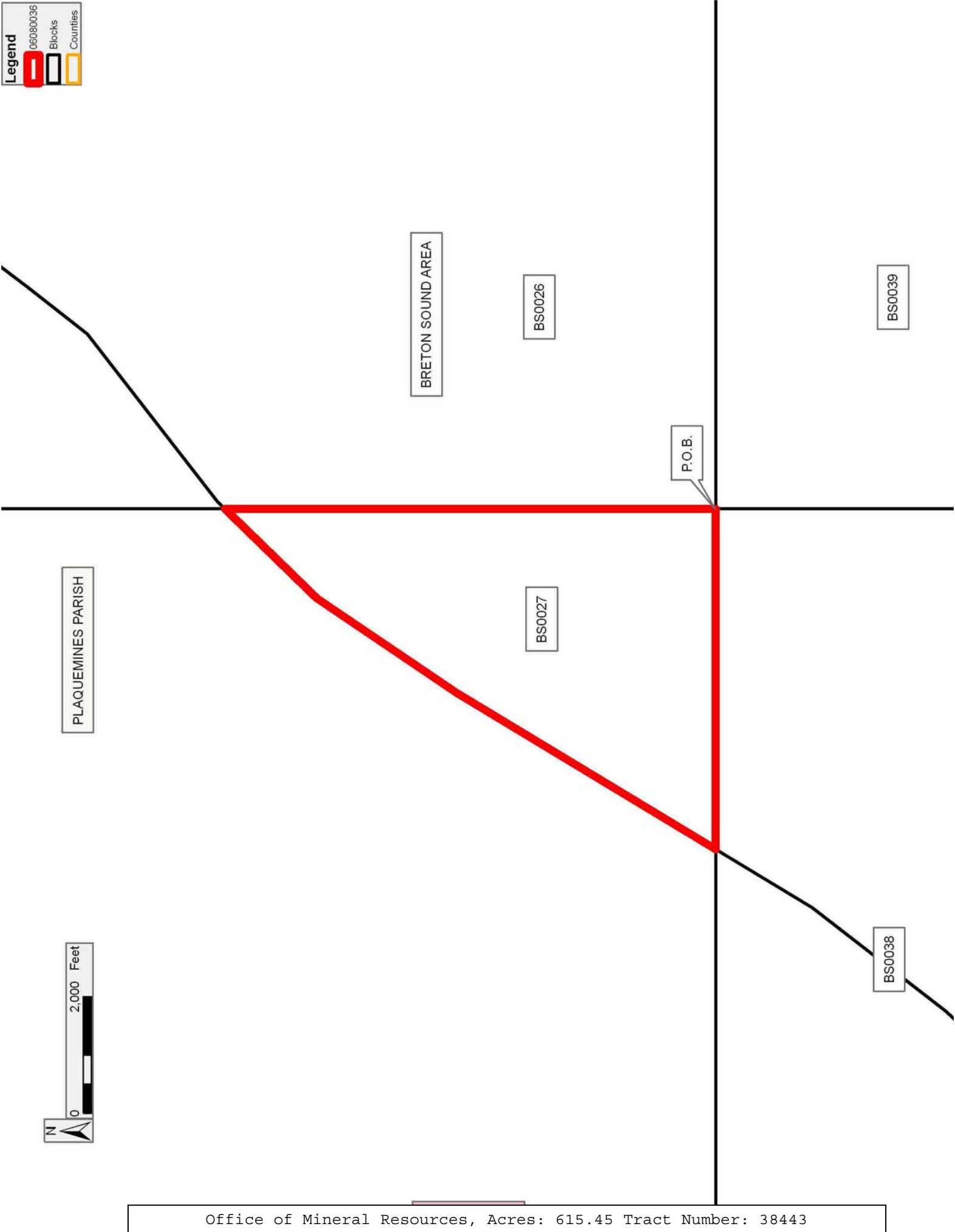
Bidder	Cash Payment	Price/ Acre	Rental	Oil	Gas	Other

Legend

06080036

Blocks

Counties



TRACT 38444 - Portion of Block 38, Breton Sound Area, Plaquemines Parish, Louisiana

The beds and bottoms of all water bodies belonging to the State of Louisiana located in Block 38, Breton Sound Area, together with any present lands formed by accretion to the shoreline or islands formed therein, located in Plaquemines Parish, Louisiana, owned by and not presently under mineral lease as of August 9, 2006, from the State of Louisiana, the geographical area of which is more fully described as follows: Beginning at the Northeast corner of Block 38, Breton Sound Area, having Coordinates of X = 2,723,850.00 and Y = 322,330.00; thence South 9,287.00 feet along the East line of said Block 38 to a point having Coordinates of X = 2,723,850.00 and Y = 313,043.00; thence West 14,750.00 feet to a point on the West line of said Block 38 having Coordinates of X = 2,709,100.00 and Y = 313,043.00; thence North 2,512.59 feet along the West line of said Block 38 to a point having Coordinates of X = 2,709,100.00 and Y = 315,555.59; thence Northeasterly on a straight line to a point having Coordinates of X = 2,710,380.00 and Y = 315,995.00; thence Northeasterly on a straight line to a point having Coordinates of X = 2,711,772.00 and Y = 316,107.00; thence Northeasterly on a straight line to a point having Coordinates of X = 2,713,324.00 and Y = 316,801.00; thence Northeasterly on a straight line to a point having Coordinates of X = 2,714,633.00 and Y = 317,731.00; thence Northeasterly on a straight line to a point having Coordinates of X = 2,715,236.00 and Y = 318,391.00; thence Northeasterly on a straight line to a point having Coordinates of X = 2,717,012.00 and Y = 320,677.00; thence Northeasterly on a straight line to a point on the North Line of said Block 38 having Coordinates of X = 2,718,009.98 and Y = 322,330.00; thence East 5,840.02 feet along the North line of said Block 38 to the point of beginning, containing approximately **2,197.88 acres**, all as more particularly outlined on a plat on file in the Office of Mineral Resources, Department of Natural Resources. All bearings, distances and coordinates are based on Louisiana Coordinate System of 1927, (North or South Zone).

NOTE: The above description of the Tract nominated for lease has been provided and corrected, where required, exclusively by the nomination party. Any mineral lease selected from this Tract and awarded by the Louisiana State Mineral Board shall be without warranty of any kind, either express, implied, or statutory, including, but not limited to, the implied warranties of merchantability and fitness for a particular purpose. Should the mineral lease awarded by the Louisiana State Mineral Board be subsequently modified, cancelled or abrogated due to the existence of conflicting leases, operating agreements, private claims or other future obligations or conditions which may affect all or any portion of the leased Tract, it shall not relieve the Lessee of the obligation to pay any bonus due thereon to the Louisiana State Mineral Board, nor shall the Louisiana State Mineral Board be obligated to refund any consideration paid by the Lessor prior to such modification, cancellation, or abrogation, including, but not limited to, bonuses, rentals and royalties.

NOTE: The State of Louisiana does hereby reserve, and this lease shall be subject to, the imprescriptible right of surface use in the nature of a servitude in favor of the Department of Natural Resources, including its Offices and Commissions, for the sole purpose of implementing, constructing, servicing and maintaining approved coastal zone management and/or restoration projects. Utilization of any and all rights derived under this lease by the mineral lessee, its agents, successors or assigns, shall not interfere with nor hinder the reasonable surface use by the Department of Natural Resources, its Offices or Commissions, as herein above reserved.

Applicant: BONURA ENERGY INVESTMENTS

Bidder	Cash Payment	Price/ Acre	Rental	Oil	Gas	Other

Legend

06080044

Blocks

BS0026

BS0039

P.O.B.

BS0027

PLAQUEMINES PARISH

BRETON SOUND AREA

BS0038

BS0028

BS0037



TRACT 38445 - Portion of Blocks 37, and 44, Breton Sound Area, Plaquemines Parish, Louisiana

The beds and bottoms of all water bodies belonging to the State of Louisiana located in Blocks 37, and 44, Breton Sound Area, together with any present lands formed by accretion to the shoreline or islands formed therein, located in Plaquemines Parish, Louisiana, owned by and not presently under mineral lease as of August 9, 2006, from the State of Louisiana, the geographical area of which is more fully described as follows: Beginning at a point on the East line of Block 44, Breton Sound Area, having Coordinates of X = 2,709,100.00 and Y = 305,660.00; thence West 14,750.00 feet to a point on the West line of said Block 44 having Coordinates of X = 2,694,350.00 and Y = 305,660.00; thence North 4,832.12 feet on the West line of said Block 44 and Block 37, Breton Sound Area to a point having Coordinates of X = 2,694,350.00 and Y = 310,492.12; thence Northeasterly on a straight line to a point on the East line of said Block 37 having Coordinates of X = 2,709,100.00 and Y = 315,555.59; thence South 9,895.59 feet on the East line of said Block 37 and said Block 44 to the point of beginning, containing approximately **2,493.50 acres**, all as more particularly outlined on a plat on file in the Office of Mineral Resources, Department of Natural Resources. All bearings, distances and coordinates are based on Louisiana Coordinate System of 1927, (North or South Zone).

NOTE: The above description of the Tract nominated for lease has been provided and corrected, where required, exclusively by the nomination party. Any mineral lease selected from this Tract and awarded by the Louisiana State Mineral Board shall be without warranty of any kind, either express, implied, or statutory, including, but not limited to, the implied warranties of merchantability and fitness for a particular purpose. Should the mineral lease awarded by the Louisiana State Mineral Board be subsequently modified, cancelled or abrogated due to the existence of conflicting leases, operating agreements, private claims or other future obligations or conditions which may affect all or any portion of the leased Tract, it shall not relieve the Lessee of the obligation to pay any bonus due thereon to the Louisiana State Mineral Board, nor shall the Louisiana State Mineral Board be obligated to refund any consideration paid by the Lessor prior to such modification, cancellation, or abrogation, including, but not limited to, bonuses, rentals and royalties.

NOTE: The State of Louisiana does hereby reserve, and this lease shall be subject to, the imprescriptible right of surface use in the nature of a servitude in favor of the Department of Natural Resources, including its Offices and Commissions, for the sole purpose of implementing, constructing, servicing and maintaining approved coastal zone management and/or restoration projects. Utilization of any and all rights derived under this lease by the mineral lessee, its agents, successors or assigns, shall not interfere with nor hinder the reasonable surface use by the Department of Natural Resources, its Offices or Commissions, as herein above reserved.

NOTE: It appears, according to our records, that a portion of this Tract is located within the restrictive safety fairway area as set out by the Corps of Engineers, U.S. Army and/or the restrictive anchorage area as set out by the U.S. Coast Guard.

Applicant: BONURA ENERGY INVESTMENTS

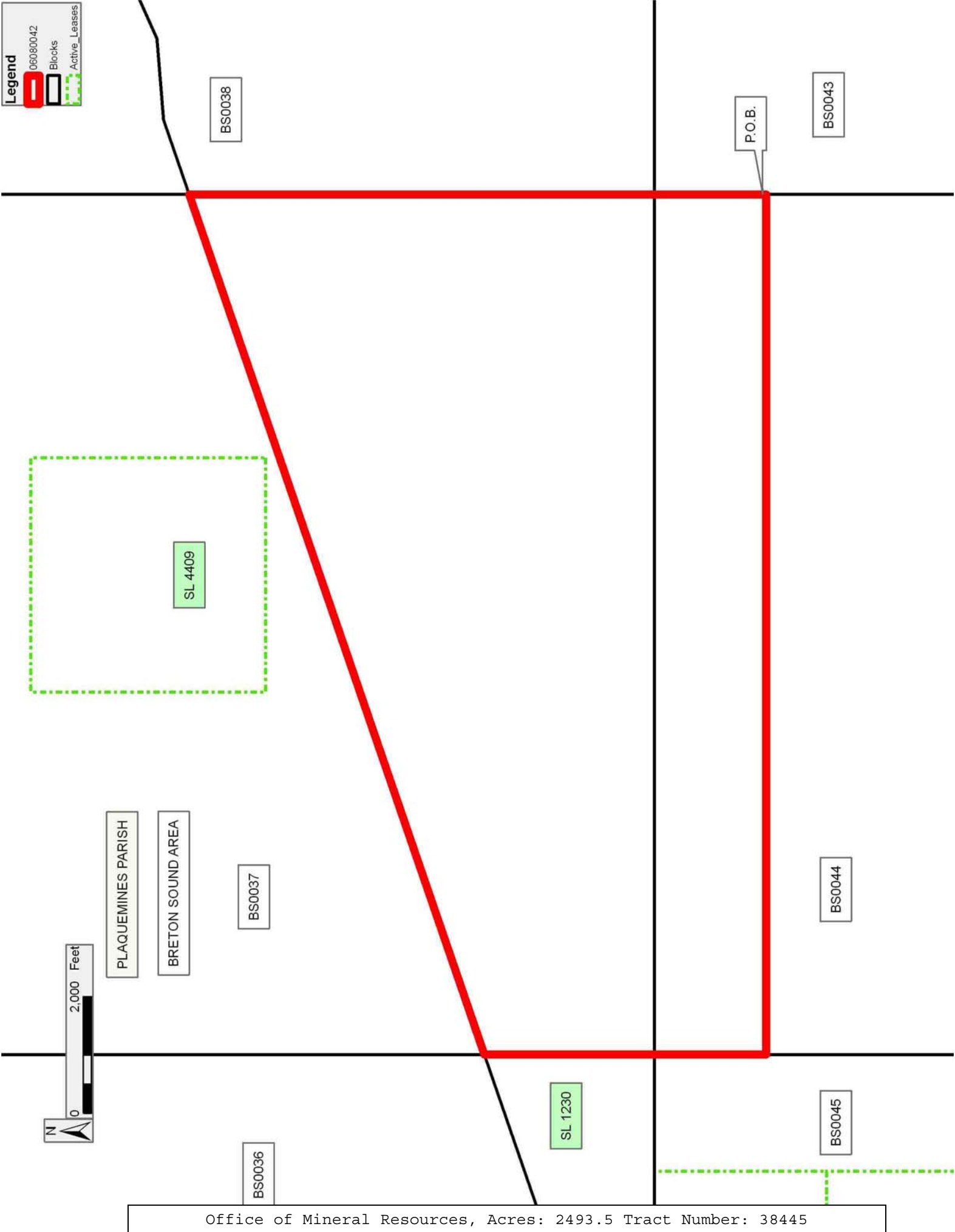
Bidder	Cash Payment	Price/ Acre	Rental	Oil	Gas	Other

Legend

06080042

Blocks

Active_Leases



TRACT 38446 - Portion of Blocks 38, and 43, Breton Sound Area, Plaquemines Parish, Louisiana

The beds and bottoms of all water bodies belonging to the State of Louisiana located in Blocks 38, and 43, Breton Sound Area, together with any present lands formed by accretion to the shoreline or islands formed therein, located in Plaquemines Parish, Louisiana, owned by and not presently under mineral lease as of August 9, 2006, from the State of Louisiana, the geographical area of which is more fully described as follows: Beginning at a point on the West line of Block 43, Breton Sound Area, having Coordinates of X = 2,709,100.00 and Y = 305,660.00; thence North 7,383.00 feet to a point on the West line of Block 38, Breton Sound Area having Coordinates of X = 2,709,100.00 and Y = 313,043.00; thence East 14,750.00 feet to a point on the East line of said Block 38 having Coordinates of X = 2,723,850.00 and Y = 313,043.00; thence South 7,383.00 feet to a point on the East line of said Block 43 having Coordinates of X = 2,723,850.00 and Y = 305,660.00; thence West 14,750.00 feet to the point of beginning, containing approximately **2,499.98 acres**, all as more particularly outlined on a plat on file in the Office of Mineral Resources, Department of Natural Resources. All bearings, distances and coordinates are based on Louisiana Coordinate System of 1927, (North or South Zone).

NOTE: The above description of the Tract nominated for lease has been provided and corrected, where required, exclusively by the nomination party. Any mineral lease selected from this Tract and awarded by the Louisiana State Mineral Board shall be without warranty of any kind, either express, implied, or statutory, including, but not limited to, the implied warranties of merchantability and fitness for a particular purpose. Should the mineral lease awarded by the Louisiana State Mineral Board be subsequently modified, cancelled or abrogated due to the existence of conflicting leases, operating agreements, private claims or other future obligations or conditions which may affect all or any portion of the leased Tract, it shall not relieve the Lessee of the obligation to pay any bonus due thereon to the Louisiana State Mineral Board, nor shall the Louisiana State Mineral Board be obligated to refund any consideration paid by the Lessor prior to such modification, cancellation, or abrogation, including, but not limited to, bonuses, rentals and royalties.

NOTE: The State of Louisiana does hereby reserve, and this lease shall be subject to, the imprescriptible right of surface use in the nature of a servitude in favor of the Department of Natural Resources, including its Offices and Commissions, for the sole purpose of implementing, constructing, servicing and maintaining approved coastal zone management and/or restoration projects. Utilization of any and all rights derived under this lease by the mineral lessee, its agents, successors or assigns, shall not interfere with nor hinder the reasonable surface use by the Department of Natural Resources, its Offices or Commissions, as herein above reserved.

NOTE: It appears, according to our records, that a portion of this Tract is located within the restrictive safety fairway area as set out by the Corps of Engineers, U.S. Army and/or the restrictive anchorage area as set out by the U.S. Coast Guard.

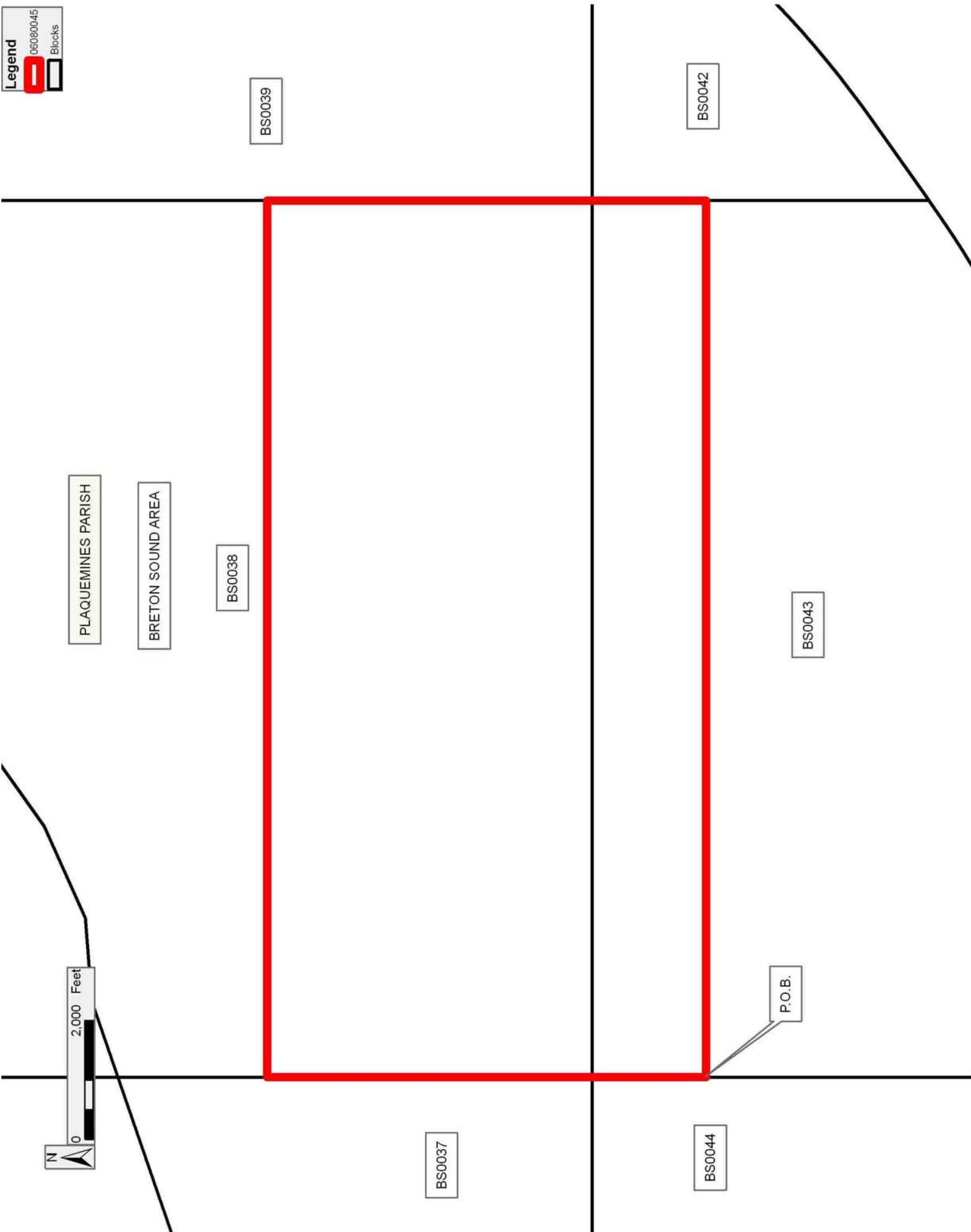
Applicant: BONURA ENERGY INVESTMENTS

Bidder	Cash Payment	Price/ Acre	Rental	Oil	Gas	Other

Legend

06080045

Blocks



TRACT 38447 - Portion of Blocks 45, 46, 51, and 52, Breton Sound Area, Plaquemines Parish, Louisiana

The beds and bottoms of all water bodies belonging to the State of Louisiana located in Blocks 45, 46, 51, and 52, Breton Sound Area, together with any present lands formed by accretion to the shoreline or islands formed therein, located in Plaquemines Parish, Louisiana, owned by and not presently under mineral lease as of August 9, 2006, from the State of Louisiana, the geographical area of which is more fully described as follows: Beginning at the Northeast corner of Block 45, Breton Sound Area, having Coordinates of X = 2,694,350.00 and Y = 307,580.00; thence South 10,540.21 feet along the East line of said Block 45 to the Northeast corner of State Lease No. 16735, as amended, having Coordinates of X = 2,694,350.00 and Y = 297,039.79; thence along the boundary of said State Lease No. 16735 the following courses: North 60 degrees 26 minutes 24 seconds West 1,302.52 feet and South 29 degrees 33 minutes 37 seconds West 1,554.74 feet to its Southwest corner, also being the Northern most Northwest corner of State Lease No. 15683, as amended, having Coordinates of X = 2,692,450.00 and Y = 296,330.00; thence along the boundary of said State Lease No. 15683 the following courses: South 29 degrees 33 minutes 37 seconds West 4,023.74 feet and North 46 degrees 32 minutes 58 seconds West 1,995.38 feet to a point on its boundary, also being a point on the East line of State Lease No. 17942 having Coordinates of X = 2,689,016.35 and Y = 294,202.28; thence along the boundary of said State Lease No. 17942 the following courses: North 50 degrees 31 minutes 39 seconds East 3,347.00 feet and South 64 degrees 19 minutes 10 seconds West 7,125.32 feet to its Southwest corner, also being the Northwest corner of State Lease No. 17674 having Coordinates of X = 2,685,178.49 and Y = 293,242.22; thence South 82 degrees 36 minutes 38 seconds West 3,205.11 feet to the Southwest corner of said State Lease No. 17674, also being the Western most point on State Lease No. 17675 and the Northeast corner of State Lease No. 18549 having Coordinates of X = 2,682,000.00 and Y = 292,830.00; thence South 75 degrees 19 minutes 58 seconds West 3,854.88 feet to the Northwest corner of said State Lease No. 18549 having Coordinates of X = 2,678,270.74 and Y = 291,853.93; thence Northwesterly on a straight line to a point having Coordinates of X = 2,678,009.00 and Y = 294,303.00; thence Northeasterly on a straight line to a point having Coordinates of X = 2,680,880.00 and Y = 294,918.00; thence North 64 degrees 13 minutes 43 seconds East 2,097.61 feet to the Western most Southeast corner of State Lease No. 17691 having Coordinates of X = 2,682,768.97 and Y = 295,830.00; thence Northeasterly on a straight line to the Eastern most Southeast corner of State Lease No. 17691 having Coordinates of X = 2,683,000.00 and Y = 295,941.54; thence Northeasterly on a straight line to a point having Coordinates of X = 2,683,264.00 and Y = 296,069.00; thence Northeasterly on a straight line to a point having Coordinates of X = 2,685,058.00 and Y = 297,573.00; thence Northeasterly on a straight line to a point having Coordinates of X = 2,687,014.00 and Y = 300,054.00; thence Northeasterly on a straight line to a point having Coordinates of X = 2,687,610.00 and Y = 301,648.00; thence Northeasterly on a straight line to a point on the South line of State Lease No. 2001 having Coordinates of X = 2,687,625.35

and Y = 301,705.00; thence along the boundary of said State Lease No. 2001 the following courses: East 4,724.65 feet and North 2,925.00 feet to its Northeast corner, also being the Southeast corner of State Lease No. 1237 having Coordinates of X = 2,692,350.00 and Y = 304,630.00; thence North 2,950.00 feet on the East line of said State Lease No. 1237 to its Northeast corner, also being a point on the North line of said Block 45 having Coordinates of X = 2,692,350.00 and Y = 307,580.00; thence East 2,000.00 feet along the North line of said Block 45 to the point of beginning, containing approximately **2,036.29 acres**, all as more particularly outlined on a plat on file in the Office of Mineral Resources, Department of Natural Resources. All bearings, distances and coordinates are based on Louisiana Coordinate System of 1927, (North or South Zone).

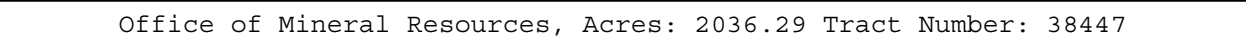
NOTE: The above description of the Tract nominated for lease has been provided and corrected, where required, exclusively by the nomination party. Any mineral lease selected from this Tract and awarded by the Louisiana State Mineral Board shall be without warranty of any kind, either express, implied, or statutory, including, but not limited to, the implied warranties of merchantability and fitness for a particular purpose. Should the mineral lease awarded by the Louisiana State Mineral Board be subsequently modified, cancelled or abrogated due to the existence of conflicting leases, operating agreements, private claims or other future obligations or conditions which may affect all or any portion of the leased Tract, it shall not relieve the Lessee of the obligation to pay any bonus due thereon to the Louisiana State Mineral Board, nor shall the Louisiana State Mineral Board be obligated to refund any consideration paid by the Lessor prior to such modification, cancellation, or abrogation, including, but not limited to, bonuses, rentals and royalties.

NOTE: The State of Louisiana does hereby reserve, and this lease shall be subject to, the imprescriptible right of surface use in the nature of a servitude in favor of the Department of Natural Resources, including its Offices and Commissions, for the sole purpose of implementing, constructing, servicing and maintaining approved coastal zone management and/or restoration projects. Utilization of any and all rights derived under this lease by the mineral lessee, its agents, successors or assigns, shall not interfere with nor hinder the reasonable surface use by the Department of Natural Resources, its Offices or Commissions, as herein above reserved.

NOTE: It appears, according to our records, that a portion of this Tract is located within the restrictive safety fairway area as set out by the Corps of Engineers, U.S. Army and/or the restrictive anchorage area as set out by the U.S. Coast Guard.

Applicant: BONURA ENERGY INVESTMENTS

Bidder	Cash Payment	Price/ Acre	Rental	Oil	Gas	Other



TRACT 38448 - Portion of Block 44, Breton Sound Area, Plaquemines Parish, Louisiana

The beds and bottoms of all water bodies belonging to the State of Louisiana located in Block 44, Breton Sound Area, together with any present lands formed by accretion to the shoreline or islands formed therein, located in Plaquemines Parish, Louisiana, owned by and not presently under mineral lease as of August 9, 2006, from the State of Louisiana, the geographical area of which is more fully described as follows: Beginning at a point on the East line of Block 44, Breton Sound Area, having Coordinates of X = 2,709,100.00 and Y = 305,660.00; thence South 7,383.00 feet along the East line of said Block 44 to a point having Coordinates of X = 2,709,100.00 and Y = 298,277.00; thence West 14,750.00 feet to a point on the West line of said Block 44 having Coordinates of X = 2,694,350.00 and Y = 298,277.00; thence North 7,383.00 feet along the West line of said Block 44 to a point having Coordinates of X = 2,694,350.00 and Y = 305,660.00; thence East 14,750.00 feet to the point of beginning, containing approximately **2,499.98 acres**, all as more particularly outlined on a plat on file in the Office of Mineral Resources, Department of Natural Resources. All bearings, distances and coordinates are based on Louisiana Coordinate System of 1927, (North or South Zone).

NOTE: The above description of the Tract nominated for lease has been provided and corrected, where required, exclusively by the nomination party. Any mineral lease selected from this Tract and awarded by the Louisiana State Mineral Board shall be without warranty of any kind, either express, implied, or statutory, including, but not limited to, the implied warranties of merchantability and fitness for a particular purpose. Should the mineral lease awarded by the Louisiana State Mineral Board be subsequently modified, cancelled or abrogated due to the existence of conflicting leases, operating agreements, private claims or other future obligations or conditions which may affect all or any portion of the leased Tract, it shall not relieve the Lessee of the obligation to pay any bonus due thereon to the Louisiana State Mineral Board, nor shall the Louisiana State Mineral Board be obligated to refund any consideration paid by the Lessor prior to such modification, cancellation, or abrogation, including, but not limited to, bonuses, rentals and royalties.

NOTE: The State of Louisiana does hereby reserve, and this lease shall be subject to, the imprescriptible right of surface use in the nature of a servitude in favor of the Department of Natural Resources, including its Offices and Commissions, for the sole purpose of implementing, constructing, servicing and maintaining approved coastal zone management and/or restoration projects. Utilization of any and all rights derived under this lease by the mineral lessee, its agents, successors or assigns, shall not interfere with nor hinder the reasonable surface use by the Department of Natural Resources, its Offices or Commissions, as herein above reserved.

NOTE: It appears, according to our records, that a portion of this Tract is located within the restrictive safety fairway area as set out by the Corps of Engineers, U.S. Army and/or the restrictive anchorage area as set out by the U.S. Coast Guard.

Applicant: BONURA ENERGY INVESTMENTS

Bidder	Cash Payment	Price/ Acre	Rental	Oil	Gas	Other

Legend

06080046

Blocks

PLAQUEMINES PARISH

BRETON SOUND AREA

P.O.B.

BS0044

BS0043

BS0045



TRACT 38449 - Portion of Block 43, Breton Sound Area, Plaquemines Parish, Louisiana

The beds and bottoms of all water bodies belonging to the State of Louisiana located in Block 43, Breton Sound Area, together with any present lands formed by accretion to the shoreline or islands formed therein, located in Plaquemines Parish, Louisiana, owned by and not presently under mineral lease and cross hatched as of August 9, 2006, from the State of Louisiana, the geographical area of which is more fully described as follows: Beginning at a point on the West line of Block 43, Breton Sound Area, having Coordinates of X = 2,709,100.00 and Y = 305,660.00; thence East 14,750.00 feet to a point on the East line of said Block 43 having Coordinates of X = 2,723,850.00 and Y = 305,660.00; thence South 3,755.93 feet along the East line of said Block 43 to a point on the Three Mile Line having Coordinates of X = 2,723,850.00 and Y = 301,904.07; thence along said Three Mile Line the following courses: Southwesterly along an arc having a radius of 18,240.60 feet and a center at X = 2,713,324 and Y = 316,801 to a point having Coordinates of X = 2,720,770 and Y = 300,149; Southwesterly on a straight line to a point having Coordinates of X = 2,719,218 and Y = 299,455; Southwesterly along an arc having a radius of 18,240.60 feet and a center at X = 2,711,772 and Y = 316,107 to a point having Coordinates of X = 2,714,238 and Y = 298,034 and Southwesterly on a straight line to a point on the West line of said Block 43 having Coordinates of X = 2,709,100.00 and Y = 296,270.08; thence North 9,389.92 feet along the West line of said Block 43 to the point of beginning, containing approximately **2,349.82 acres, LESS AND EXCEPT** that portion thereof, if any, lying seaward of the line three nautical miles from the coast line of Louisiana, as said three mile line has been decreed by the Supreme Court of the United States, as determined by a Special Master appointed therein, in litigation styled **United States v. State of Louisiana et al No. 9 Original**, in 1975, all as more particularly outlined on a plat in the Office of Mineral Resources, Department of Natural Resources. All bearings, distances and coordinates are based on the Louisiana Coordinate System of 1927, (South Zone).

NOTE: The above description of the Tract nominated for lease has been provided and corrected, where required, exclusively by the nomination party. Any mineral lease selected from this Tract and awarded by the Louisiana State Mineral Board shall be without warranty of any kind, either express, implied, or statutory, including, but not limited to, the implied warranties of merchantability and fitness for a particular purpose. Should the mineral lease awarded by the Louisiana State Mineral Board be subsequently modified, cancelled or abrogated due to the existence of conflicting leases, operating agreements, private claims or other future obligations or conditions which may affect all or any portion of the leased Tract, it shall not relieve the Lessee of the obligation to pay any bonus due thereon to the Louisiana State Mineral Board, nor shall the Louisiana State Mineral Board be obligated to refund any consideration paid by the Lessor prior to such modification, cancellation, or abrogation, including, but not limited to, bonuses, rentals and royalties.

NOTE: The State of Louisiana does hereby reserve, and this lease shall be subject to, the imprescriptible right of surface use in the nature of a servitude in favor of the Department of Natural Resources, including its Offices and Commissions, for the sole purpose of implementing, constructing, servicing and maintaining approved coastal zone management and/or restoration projects. Utilization of any and all rights derived under this lease by the mineral lessee, its agents, successors or assigns, shall not interfere with nor hinder the reasonable surface use by the Department of Natural Resources, its Offices or Commissions, as herein above reserved.

NOTE: It appears, according to our records, that a portion of this Tract is located within the restrictive safety fairway area as set out by the Corps of Engineers, U.S. Army and/or the restrictive anchorage area as set out by the U.S. Coast Guard.

Applicant: BONURA ENERGY INVESTMENTS

Bidder	Cash Payment	Price/ Acre	Rental	Oil	Gas	Other



TRACT 38450 - Portion of Blocks 44, and 53, Breton Sound Area, Plaquemines Parish, Louisiana

The beds and bottoms of all water bodies belonging to the State of Louisiana located in Blocks 44, and 53, Breton Sound Area, together with any present lands formed by accretion to the shoreline or islands formed therein, located in Plaquemines Parish, Louisiana, owned by and not presently under mineral lease and cross hatched as of August 9, 2006, from the State of Louisiana, the geographical area of which is more fully described as follows: Beginning at a point on the East line of Block 44, Breton Sound Area, having Coordinates of $X = 2,709,100.00$ and $Y = 298,277.00$; thence South 2,006.92 feet along the East line of said Block 44 to a point on the Three Mile Line having Coordinates of $X = 2,709,100.00$ and $Y = 296,270.08$; thence along said Three Mile Line the following courses: Southwesterly along a straight line to a point having Coordinates of $X = 2,704,480$ and $Y = 294,684$; Southwesterly along a straight line to a point having Coordinates of $X = 2,704,099$ and $Y = 293,666$; along an arc having a radius of 18,240.60 feet and a center at $X = 2,687,014$ and $Y = 300,054$ to a point having Coordinates of $X = 2,701,338$ and $Y = 288,761$ and Southwesterly along a straight line to the Eastern most Southeast corner of State Lease No. 3770 having Coordinates of $X = 2,700,150.00$ and $Y = 287,254.14$; thence West 1,200.00 feet on the boundary of said State Lease No. 3770 to the Southeast corner of State Lease No. 17945 having Coordinates of $X = 2,698,950.00$ and $Y = 287,254.14$; thence North 3,575.86 feet along the East line of said State Lease No. 17945 to its Northeast corner, also being the Northern most Northeast corner of said State Lease No. 3770 having Coordinates of $X = 2,698,950.00$ and $Y = 290,830.00$; thence West 4,600.00 feet along the North line of said State Lease No. 3770 to its Northwest corner, also being a point on the West line of Block 53, having Coordinates of $X = 2,694,350.00$ and $Y = 290,830.00$; thence North 89.16 feet along the West line of said Block 53 to the Southern most point of State Lease No. 16738, as amended, having Coordinates of $X = 2,694,350.00$ and $Y = 290,919.16$; thence North 29 degrees 33 minutes 37 seconds East 2,196.78 feet to the Northeast corner of said State Lease No. 16738, also being a point on the North Line of said Block 53, and a point on the East line of State Lease No. 16736, as amended, having Coordinates of $X = 2,695,433.75$ and $Y = 292,830.00$; thence along the boundary of said State Lease No. 16736 the following courses: North 29 degrees 33 minutes 37 seconds East 3,127.17 feet and North 60 degrees 26 minutes 23 seconds West 3,019.54 feet to a point on the North line of said State Lease No. 16736, also being a point on the West line of said Block 44 having Coordinates of $X = 2,694,350.00$ and $Y = 297,039.79$; thence North 1,237.21 feet along the West line of said Block 44 to a point having Coordinates of $X = 2,694,350.00$ and $Y = 298,277.00$; thence East 14,750.00 feet to the point of beginning, containing approximately **1,985.02 acres, LESS AND EXCEPT** that portion thereof, if any, lying seaward of the line three nautical miles from the coast line of Louisiana, as said three mile line has been decreed by the Supreme Court of the United States, as determined by a Special Master appointed therein, in litigation styled **United States v. State of Louisiana et al No. 9**

Original, in 1975, all as more particularly outlined on a plat in the Office of Mineral Resources, Department of Natural Resources. All bearings, distances and coordinates are based on the Louisiana Coordinate System of 1927, (South Zone).

NOTE: The above description of the Tract nominated for lease has been provided and corrected, where required, exclusively by the nomination party. Any mineral lease selected from this Tract and awarded by the Louisiana State Mineral Board shall be without warranty of any kind, either express, implied, or statutory, including, but not limited to, the implied warranties of merchantability and fitness for a particular purpose. Should the mineral lease awarded by the Louisiana State Mineral Board be subsequently modified, cancelled or abrogated due to the existence of conflicting leases, operating agreements, private claims or other future obligations or conditions which may affect all or any portion of the leased Tract, it shall not relieve the Lessee of the obligation to pay any bonus due thereon to the Louisiana State Mineral Board, nor shall the Louisiana State Mineral Board be obligated to refund any consideration paid by the Lessor prior to such modification, cancellation, or abrogation, including, but not limited to, bonuses, rentals and royalties.

NOTE: The State of Louisiana does hereby reserve, and this lease shall be subject to, the imprescriptible right of surface use in the nature of a servitude in favor of the Department of Natural Resources, including its Offices and Commissions, for the sole purpose of implementing, constructing, servicing and maintaining approved coastal zone management and/or restoration projects. Utilization of any and all rights derived under this lease by the mineral lessee, its agents, successors or assigns, shall not interfere with nor hinder the reasonable surface use by the Department of Natural Resources, its Offices or Commissions, as herein above reserved.

NOTE: It appears, according to our records, that a portion of this Tract is located within the restrictive safety fairway area as set out by the Corps of Engineers, U.S. Army and/or the restrictive anchorage area as set out by the U.S. Coast Guard.

Bidder	Cash Payment	Price/ Acre	Rental	Oil	Gas	Other

Applicant: BONURA ENERGY INVESTMENTS

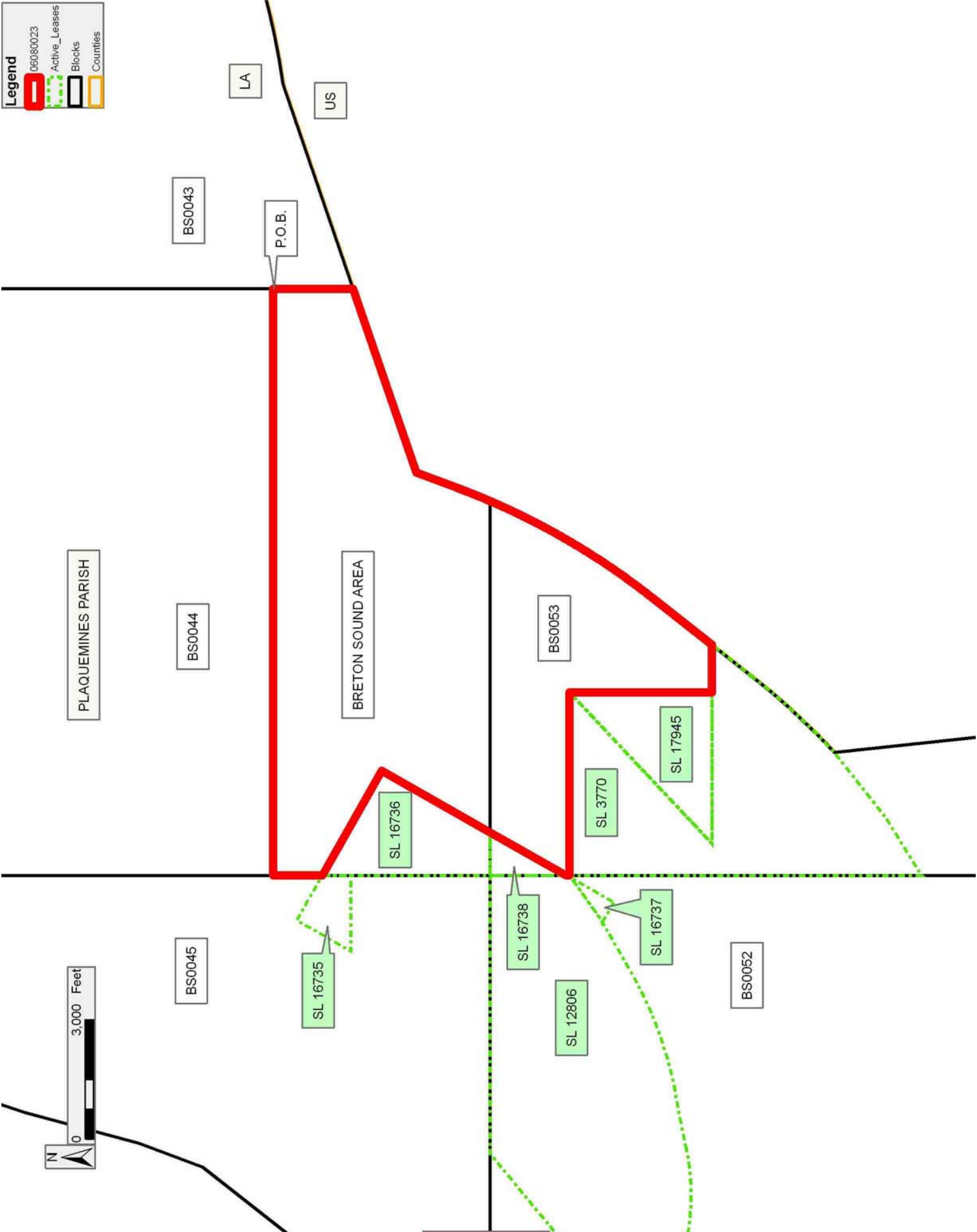
Legend

06080023

Active_Leases

Blocks

Counties



TRACT 38451 - Portion of Blocks 52, and 53, Breton Sound Area, Blocks 44, and 45, Main Pass Area, Revised, Plaquemines Parish, Louisiana

The beds and bottoms of all water bodies belonging to the State of Louisiana located in Blocks 52, and 53, Breton Sound Area, Blocks 44, and 45, Main Pass Area, Revised, together with any present lands formed by accretion to the shoreline or islands formed therein, located in Plaquemines Parish, Louisiana, owned by and not presently under mineral lease and cross hatched as of August 9, 2006, from the State of Louisiana, the geographical area of which is more fully described as follows: Beginning at a point within Block 45, Main Pass Area, Revised, also being a point on the East line of State Lease No. 17863 having Coordinates of X = 2,690,192.50 and Y = 275,734.00; thence North 35 degrees 14 minutes 31 seconds East 2,872.46 feet along the East line of said State Lease No. 17863 to its Northeast corner, also being on the North line of said Block 45 and the South line of Block 52, Breton Sound Area, and the Southeast corner of State Lease No. 17860 having Coordinates of X = 2,691,850.00 and Y = 278,080.00; thence along the boundary of said State Lease No. 17860 the following courses: North 06 degrees 54 minutes 40 seconds East 8,310.39 feet and North 07 degrees 07 minutes 30 seconds West 3,275.47 feet to its Northeast corner, also being a point on the boundary of State Lease No. 12806 having Coordinates of X = 2,692,443.73 and Y = 289,580.18; thence North 60 degrees 17 minutes 03 seconds East 869.04 feet along the boundary of said State Lease No. 12806 to the Northwest corner of State Lease No. 16737, as amended, having Coordinates of X = 2,693,198.49 and Y = 290,010.96; thence along the boundary of said State Lease No. 16737 the following courses: South 58 degrees 34 minutes 46 seconds East 553.87 feet and North 29 degrees 33 minutes 36 seconds East 1,204.23 feet to its Eastern most corner, also being a point on the boundary of said State Lease No. 12806 having Coordinates of X = 2,694,265.23 and Y = 290,769.71; thence North 54 degrees 34 minutes 44 seconds East 104.02 feet along the boundary of said State Lease No. 12806 to a point on the East line of said Block 52, also being the Northwest corner of State Lease No. 3770 having Coordinates of X = 2,694,350.00 and Y = 290,830.00; thence along the boundary of said State Lease No. 3770 the following courses: South 8,850.00 feet, North 58 degrees 20 minutes 55 seconds East 1,715.11 feet, North 51 degrees 27 minutes 54 seconds East 2,078.68 feet to a point on the Three Mile Line having Coordinates of X = 2,697,436.00 and Y = 284,175.00; thence Southeasterly on a straight line along said Three Mile Line to a point having Coordinates of X = 2,698,338.11 and Y = 275,734.00; thence West 8,145.61 feet to the point of beginning, containing approximately **1,306.18 acres, LESS AND EXCEPT** that portion thereof, if any, lying seaward of the line three nautical miles from the coast line of Louisiana, as said three mile line has been decreed by the Supreme Court of the United States, as determined by a Special Master appointed therein, in litigation styled **United States v. State of Louisiana et al No. 9 Original**, in 1975, all as more particularly outlined on a plat in the Office of Mineral Resources, Department of Natural Resources. All bearings, distances and coordinates are based on the Louisiana Coordinate System of 1927, (South Zone).

NOTE: The above description of the Tract nominated for lease has been provided and corrected, where required, exclusively by the nomination party. Any mineral lease selected from this Tract and awarded by the Louisiana State Mineral Board shall be without warranty of any kind, either express, implied, or statutory, including, but not limited to, the implied warranties of merchantability and fitness for a particular purpose. Should the mineral lease awarded by the Louisiana State Mineral Board be subsequently modified, cancelled or abrogated due to the existence of conflicting leases, operating agreements, private claims or other future obligations or conditions which may affect all or any portion of the leased Tract, it shall not relieve the Lessee of the obligation to pay any bonus due thereon to the Louisiana State Mineral Board, nor shall the Louisiana State Mineral Board be obligated to refund any consideration paid by the Lessor prior to such modification, cancellation, or abrogation, including, but not limited to, bonuses, rentals and royalties.

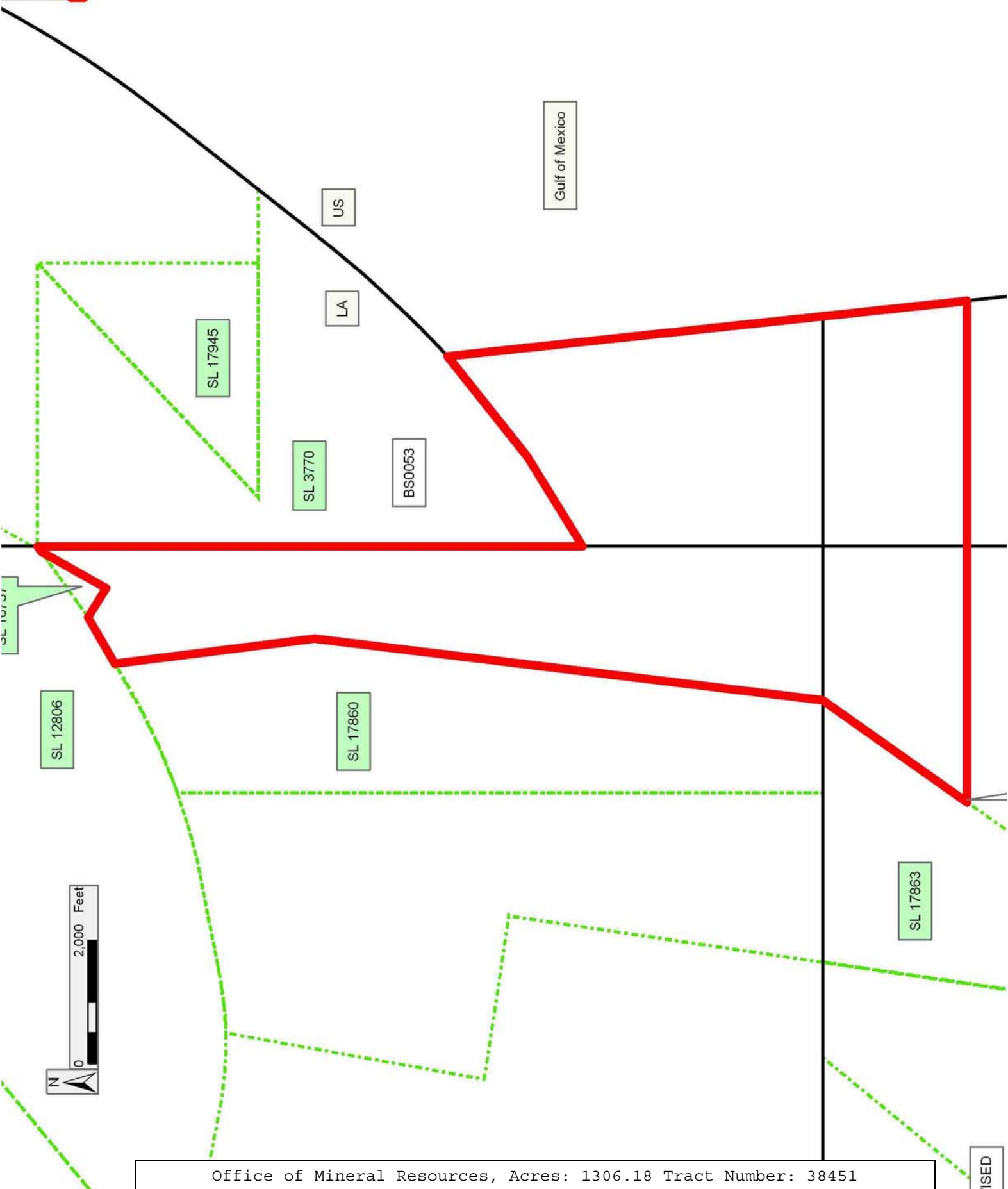
NOTE: The State of Louisiana does hereby reserve, and this lease shall be subject to, the imprescriptible right of surface use in the nature of a servitude in favor of the Department of Natural Resources, including its Offices and Commissions, for the sole purpose of implementing, constructing, servicing and maintaining approved coastal zone management and/or restoration projects. Utilization of any and all rights derived under this lease by the mineral lessee, its agents, successors or assigns, shall not interfere with nor hinder the reasonable surface use by the Department of Natural Resources, its Offices or Commissions, as herein above reserved.

Applicant: BONURA ENERGY INVESTMENTS

Bidder	Cash Payment	Price/ Acre	Rental	Oil	Gas	Other

Legend

- Blocks
- Active_Leases
- 06080034



TRACT 38452 - Portion of Blocks 51, and 52, Breton Sound Area, and Block 45, Main Pass Area, Revised, Plaquemines Parish, Louisiana

The beds and bottoms of all water bodies belonging to the State of Louisiana located in Blocks 51, and 52, Breton Sound Area, and Block 45, Main Pass Area, Revised, together with any present lands formed by accretion to the shoreline or islands formed therein, located in Plaquemines Parish, Louisiana, owned by and not presently under mineral lease as of August 9, 2006, from the State of Louisiana, the geographical area of which is more fully described as follows: Beginning at the Southeast corner of State Lease No. 17053, as amended, also being a point within Block 45, Main Pass Area, having Coordinates of X = 2,680,780.00 and Y = 275,734.00; thence along the boundary of said State Lease No. 17053 the following courses: North 2,346.00 feet and West 1,037.20 feet to a point on the North line of said State Lease No. 17053 having Coordinates of X = 2,679,742.80 and Y = 278,080.00; thence Northwesterly on a straight line to a point within Block 51, also being the Southwest corner of State Lease No. 18549 having Coordinates of X = 2,678,737.27 and Y = 287,488.64; thence along the boundary of said State Lease No. 18549 the following courses: South 88 degrees 58 minutes 31 seconds East 862.87 feet and North 77 degrees 54 minutes 38 seconds East 3,732.79 feet to its Southeast corner, also being the Southwest corner of State Lease No. 12806, as amended, having Coordinates of X = 2,683,250.00 and Y = 288,255.00; thence along the boundary of said State Lease No. 12806 the following courses: South 79 degrees 02 minutes 24 seconds East 2,050.87 feet and along an arc having a radius of 6,073.33 feet and a chord bearing of South 85 degrees 50 minutes 18 seconds East 1,189.46 feet to a point on its South line, also being the Northern most Northwest corner of State Lease No. 17861 having Coordinates of X = 2,686,449.78 and Y = 287,778.76; thence along the boundary of said State Lease No. 17861 the following courses: South 10 degrees 07 minutes 29 seconds West 4,265.18 feet, South 81 degrees 24 minutes 59 seconds East 2,680.02 feet and South 08 degrees 21 minutes 57 seconds West 5,154.85 feet to its Southwest corner, also being a point on the South line of Block 52, and the North line of said Block 45 and the Northeast corner of State Lease No. 18550 having Coordinates of X = 2,687,600.00 and Y = 278,080.00; thence along the boundary of said State Lease No. 18550 the following courses: West 1,551.00 feet and South 39 degrees 19 minutes 30 seconds West 3,032.72 feet to a point on the West line of said State Lease No. 18550 having Coordinates of X = 2,684,127.11 and Y = 275,734.00; thence West 3,347.11 feet to the point of beginning, containing approximately **2003.25 acres**, all as more particularly outlined on a plat on file in the Office of Mineral Resources, Department of Natural Resources. All bearings, distances and coordinates are based on Louisiana Coordinate System of 1927, (North or South Zone).

NOTE: The above description of the Tract nominated for lease has been provided and corrected, where required, exclusively by the nomination party. Any mineral lease selected from this Tract and awarded by the Louisiana State Mineral Board shall be without warranty of any kind, either express, implied, or statutory, including, but not limited to, the

implied warranties of merchantability and fitness for a particular purpose. Should the mineral lease awarded by the Louisiana State Mineral Board be subsequently modified, cancelled or abrogated due to the existence of conflicting leases, operating agreements, private claims or other future obligations or conditions which may affect all or any portion of the leased Tract, it shall not relieve the Lessee of the obligation to pay any bonus due thereon to the Louisiana State Mineral Board, nor shall the Louisiana State Mineral Board be obligated to refund any consideration paid by the Lessor prior to such modification, cancellation, or abrogation, including, but not limited to, bonuses, rentals and royalties.

NOTE: The State of Louisiana does hereby reserve, and this lease shall be subject to, the imprescriptible right of surface use in the nature of a servitude in favor of the Department of Natural Resources, including its Offices and Commissions, for the sole purpose of implementing, constructing, servicing and maintaining approved coastal zone management and/or restoration projects. Utilization of any and all rights derived under this lease by the mineral lessee, its agents, successors or assigns, shall not interfere with nor hinder the reasonable surface use by the Department of Natural Resources, its Offices or Commissions, as herein above reserved.

Applicant: BONURA ENERGY INVESTMENTS

Bidder	Cash Payment	Price/Acre	Rental	Oil	Gas	Other

Legend

06080033

Blocks

Active_Leases

