

**TRACT 37715 - Cameron Parish, Louisiana**

All of the lands now or formerly constituting the beds and bottoms of all water bodies of every nature and description the title of which vests in the State of Louisiana, together with all islands arising therein and other lands formed by accretion or by reliction, where allowed by law, excepting tax adjudicated lands, and not presently under mineral lease on August 10, 2005, situated in Cameron Parish, Louisiana, and more particularly described as follows: Beginning at a point having Coordinates of X = 1,220,860.00 and Y = 466,894.24; thence West 7,062.13 feet to a point on the Texas Louisiana Boundary having Coordinates of X = 1,213,797.87 and Y = 466,894.24; thence along the said Texas Louisiana Boundary the following courses: North 14 degrees 23 minutes 58 seconds East 2,019.19 feet to a point having Coordinates of X = 1,214,300.00 and Y = 468,850.00, North 11 degrees 52 minutes 43 seconds East 1,481.73 feet to a point having Coordinates of X = 1,214,605.00 and Y = 470,300.00 and North 25 degrees 46 minutes 49 seconds East 577.48 feet to the Southwest corner of State Lease No. 17420 having Coordinates of X = 1,214,856.16 and Y = 470,820.00; thence East 6,003.84 feet along the South Line of said State Lease No. 17420 to its Southeast corner having Coordinates of X = 1,220,860.00 and Y = 470,820.00 thence South 3,925.76 feet to the point of beginning, containing **592.26 acres, LESS AND EXCEPT** that portion thereof, if any, located West of the boundary line between the States of Texas and Louisiana as determined by the report of the Special Master and adjudicated by the Supreme Court of the United States in litigation styled **Texas v. Louisiana, et al No. 36 Original**, or as otherwise approved by said court, all as more particularly outlined on a plat on file in the Office of Mineral Resources, Department of Natural Resources. All bearings, distances and coordinates are based on Louisiana Coordinate System of 1927, (North or South Zone), where applicable.

NOTE: The above description of the Tract nominated for lease has been provided and corrected, where required, exclusively by the nomination party. Any mineral lease selected from this Tract and awarded by the Louisiana State Mineral Board shall be without warranty of any kind, either express, implied, or statutory, including, but not limited to, the implied warranties of merchantability and fitness for a particular purpose. Should the mineral lease awarded by the Louisiana State Mineral Board be subsequently modified, cancelled or abrogated due to the existence of conflicting leases, operating agreements, private claims or other future obligations or conditions which may affect all or any portion of the leased Tract, it shall not relieve the Lessee of the obligation to pay any bonus due thereon to the Louisiana State Mineral Board, nor shall the Louisiana State Mineral Board be obligated to refund any consideration paid by the Lessor prior to such modification, cancellation, or abrogation, including, but not limited to, bonuses, rentals and royalties.

NOTE: The State of Louisiana does hereby reserve, and this lease shall be subject to, the imprescriptible right of surface use in the nature of a servitude in favor of the Department of Natural Resources, including its

Offices and Commissions, for the sole purpose of implementing, constructing, servicing and maintaining approved coastal zone management and/or restoration projects. Utilization of any and all rights derived under this lease by the mineral lessee, its agents, successors or assigns, shall not interfere with nor hinder the reasonable surface use by the Department of Natural Resources, its Offices or Commissions, as herein above reserved.

Applicant: SUNCOAST LAND SERVICES, INC.

Bidder	Cash Payment	Price/Acre	Rental	Oil	Gas	Other

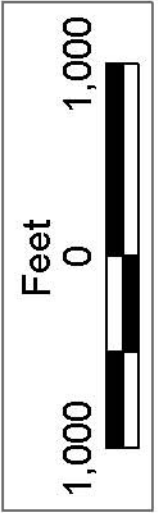


CAMERON PARISH

SL 17420

SABINE LAKE

P.O.B.  
X=1,220,860.00  
Y=466,894.24



TX

LA

**TRACT 37716 - Cameron Parish, Louisiana**

All of the lands now or formerly constituting the beds and bottoms of all water bodies of every nature and description the title of which vests in the State of Louisiana, together with all islands arising therein and other lands formed by accretion or by reliction, where allowed by law, excepting tax adjudicated lands, and not presently under mineral lease on August 10, 2005, situated in Cameron Parish, Louisiana, and more particularly described as follows: Beginning at the Southwest corner of State Lease No. 18037 located on the North boundary of State Lease No. 18038 having Coordinates of X = 1,222,704.54 and Y = 462,089.57; thence West 3,234.21 feet along the North boundary of said State Lease No. 18038 to its Northwest corner having Coordinates of X = 1,219,470.33 and Y = 462,089.57; thence West 7,101.41 feet to a point on the Texas Louisiana boundary having Coordinates of X = 1,212,368.92 and Y = 462,089.57; thence on the said Texas Louisiana boundary the following: North 21 degrees 41 minutes 28 seconds East 1,491.01 feet to a point having Coordinates of X = 1,212,920.00 and Y = 463,475.00 and North 14 degrees 23 minutes 58 seconds East 3,530.14 feet to a point having Coordinates of X = 1,213,797.87 and Y = 466,894.24; thence East 8,906.67 feet to the Northwest corner of State Lease No. 18534 having Coordinates of X = 1,222,704.54 and Y = 466,894.24; thence along the boundary of said State Lease No. 18534 the following: South 2,486.14 feet to a point having Coordinates of X = 1,222,704.54 and Y = 464,408.10, East 1,743.93 feet to a point having Coordinates of X = 1,224,448.47 and Y = 464,408.10 and South 1,244.10 feet to the Southwest corner of said State Lease No. 18534 and a point on the North boundary line of said State Lease No. 18037 having Coordinates of X = 1,224,448.47 and Y = 463,164.00; thence along the boundary of said State Lease No. 18037 the following: West 1,743.93 feet to a point having Coordinates of X = 1,222,704.54 and Y = 463,164.00 and South 1,074.43 feet to the point of beginning, containing **1,103.35 acres, LESS AND EXCEPT** that portion thereof, if any, located West of the boundary line between the States of Texas and Louisiana as determined by the report of the Special Master and adjudicated by the Supreme Court of the United States in litigation styled **Texas v. Louisiana, et al No. 36 Original**, or as otherwise approved by said court, all as more particularly outlined on a plat on file in the Office of Mineral Resources, Department of Natural Resources. All bearings, distances and coordinates are based on Louisiana Coordinate System of 1927, (North or South Zone), where applicable.

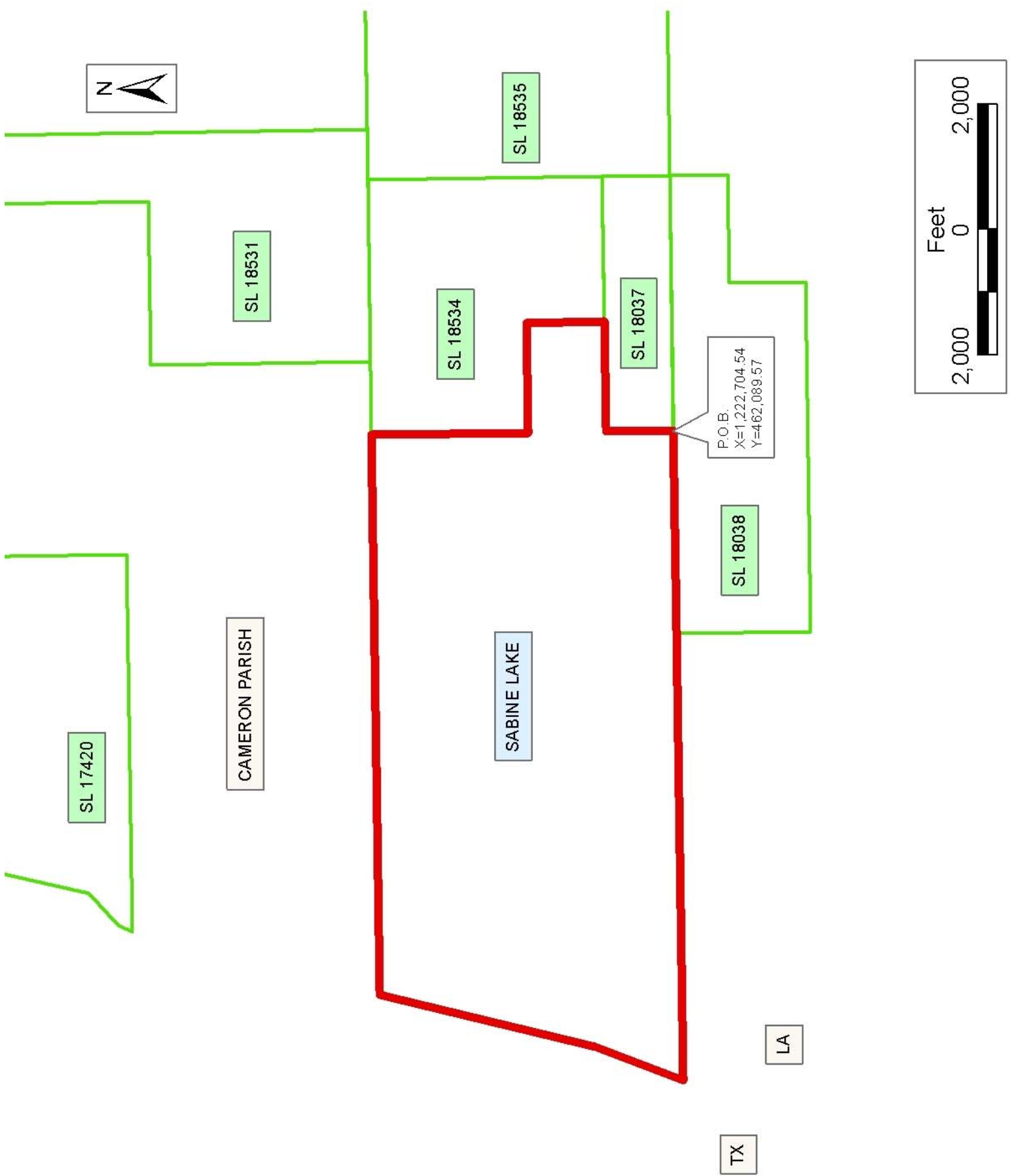
NOTE: The above description of the Tract nominated for lease has been provided and corrected, where required, exclusively by the nomination party. Any mineral lease selected from this Tract and awarded by the Louisiana State Mineral Board shall be without warranty of any kind, either express, implied, or statutory, including, but not limited to, the implied warranties of merchantability and fitness for a particular purpose. Should the mineral lease awarded by the Louisiana State Mineral Board be subsequently modified, cancelled or abrogated due to the existence of conflicting leases, operating agreements, private claims or other future obligations or conditions which may affect all or any portion

of the leased Tract, it shall not relieve the Lessee of the obligation to pay any bonus due thereon to the Louisiana State Mineral Board, nor shall the Louisiana State Mineral Board be obligated to refund any consideration paid by the Lessor prior to such modification, cancellation, or abrogation, including, but not limited to, bonuses, rentals and royalties.

NOTE: The State of Louisiana does hereby reserve, and this lease shall be subject to, the imprescriptible right of surface use in the nature of a servitude in favor of the Department of Natural Resources, including its Offices and Commissions, for the sole purpose of implementing, constructing, servicing and maintaining approved coastal zone management and/or restoration projects. Utilization of any and all rights derived under this lease by the mineral lessee, its agents, successors or assigns, shall not interfere with nor hinder the reasonable surface use by the Department of Natural Resources, its Offices or Commissions, as herein above reserved.

Applicant: SUNCOAST LAND SERVICES, INC.

Bidder	Cash Payment	Price/Acre	Rental	Oil	Gas	Other



**TRACT 37717 - Portion of Block 39, Chandeleur Sound Area, St. Bernard Parish, Louisiana**

All of the lands now or formerly constituting the beds and bottoms of all water bodies of every nature and description the title of which vests in the State of Louisiana, together with all islands arising therein and other lands formed by accretion or by reliction, where allowed by law, excepting tax adjudicated lands, and not presently under mineral lease on August 10, 2005, situated in St. Bernard Parish, Louisiana, and more particularly described as follows: Beginning at the Southwest Corner of Block 39, Chandeleur Sound Area, having Coordinates of X = 2,694,350.00 and Y = 410,830.00; thence North 14,750.00 feet along the West boundary of said Block 39 to its Northwest Corner having Coordinates of X = 2,694,350.00 and Y = 425,580.00; thence East 7,375.00 feet along the North boundary of said Block 39 to a point having Coordinates of X = 2,701,725.00 and Y = 425,580.00; thence South 14,750.00 feet to a point on the South boundary of said Block 39 having Coordinates of X = 2,701,725.00 and Y = 410,830.00; thence West 7,375.00 feet along the South boundary of said Block 39 to the point of beginning, containing approximately **2,497.27 acres**, all as more particularly outlined on a plat on file in the Office of Mineral Resources, Department of Natural Resources. All bearings, distances and coordinates are based on Louisiana Coordinate System of 1927, (North or South Zone), where applicable.

NOTE: The above description of the Tract nominated for lease has been provided and corrected, where required, exclusively by the nomination party. Any mineral lease selected from this Tract and awarded by the Louisiana State Mineral Board shall be without warranty of any kind, either express, implied, or statutory, including, but not limited to, the implied warranties of merchantability and fitness for a particular purpose. Should the mineral lease awarded by the Louisiana State Mineral Board be subsequently modified, cancelled or abrogated due to the existence of conflicting leases, operating agreements, private claims or other future obligations or conditions which may affect all or any portion of the leased Tract, it shall not relieve the Lessee of the obligation to pay any bonus due thereon to the Louisiana State Mineral Board, nor shall the Louisiana State Mineral Board be obligated to refund any consideration paid by the Lessor prior to such modification, cancellation, or abrogation, including, but not limited to, bonuses, rentals and royalties.

NOTE: The Office of Mineral Resources will require a minimum bonus of \$230 per acre and a minimum royalty of 23%.

NOTE: The State of Louisiana does hereby reserve, and this lease shall be subject to, the imprescriptible right of surface use in the nature of a servitude in favor of the Department of Natural Resources, including its Offices and Commissions, for the sole purpose of implementing, constructing, servicing and maintaining approved coastal zone management and/or restoration projects. Utilization of any and all rights derived under this lease by the mineral lessee, its agents, successors or assigns,

shall not interfere with nor hinder the reasonable surface use by the Department of Natural Resources, its Offices or Commissions, as herein above reserved.

Applicant: MINERAL SERVICES, INC.

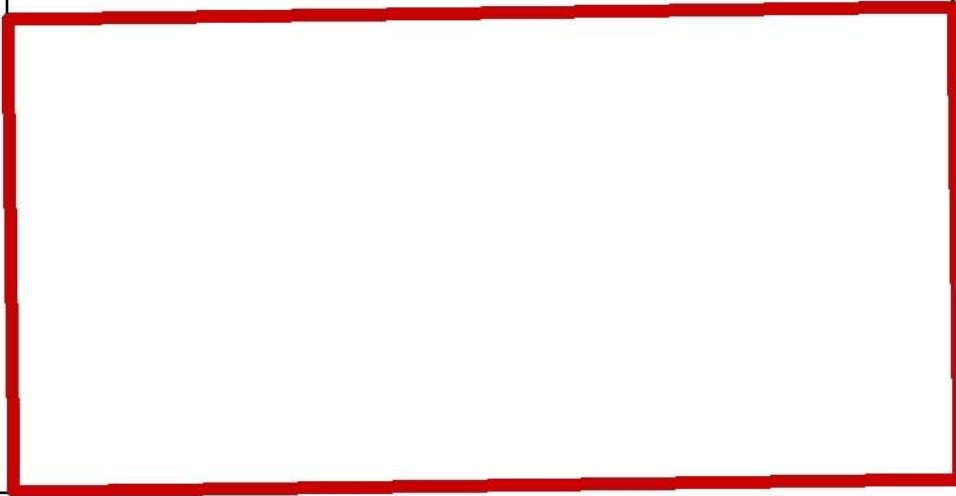
Bidder	Cash Payment	Price/Acre	Rental	Oil	Gas	Other





BLOCK CS0039

CHANDELEUR  
SOUND AREA



P.O.B.  
X=2,694,350.00  
Y=4,10,830.00

BLOCK CS0040

ST BERNARD PARISH

**TRACT 37718 - Portion of Block 40, Chandeleur Sound Area, St. Bernard Parish, Louisiana**

All of the lands now or formerly constituting the beds and bottoms of all water bodies of every nature and description the title of which vests in the State of Louisiana, together with all islands arising therein and other lands formed by accretion or by reliction, where allowed by law, excepting tax adjudicated lands, and not presently under mineral lease on August 10, 2005, situated in St. Bernard Parish, Louisiana, and more particularly described as follows: Beginning at the Southeast Corner of Block 40, Chandeleur Sound Area having Coordinates of X = 2,694,350.00 and Y = 410,830.00; thence West 7,375.00 feet along the South boundary of said Block 40 to a point having Coordinates of X = 2,686,975.00 and Y = 410,830.00; thence North 7,375.00 feet to a point having Coordinates of X = 2,686,975.00 and Y = 418,205.00; thence East 7,375.00 feet to a point on the East boundary of said Block 40 having Coordinates of X = 2,694,350.00 and Y = 418,205.00; thence South 7,375.00 feet along the East boundary of said Block 40 to the point of beginning, containing approximately **1,248.64 acres**, all as more particularly outlined on a plat on file in the Office of Mineral Resources, Department of Natural Resources. All bearings, distances and coordinates are based on Louisiana Coordinate System of 1927, (North or South Zone), where applicable.

NOTE: The above description of the Tract nominated for lease has been provided and corrected, where required, exclusively by the nomination party. Any mineral lease selected from this Tract and awarded by the Louisiana State Mineral Board shall be without warranty of any kind, either express, implied, or statutory, including, but not limited to, the implied warranties of merchantability and fitness for a particular purpose. Should the mineral lease awarded by the Louisiana State Mineral Board be subsequently modified, cancelled or abrogated due to the existence of conflicting leases, operating agreements, private claims or other future obligations or conditions which may affect all or any portion of the leased Tract, it shall not relieve the Lessee of the obligation to pay any bonus due thereon to the Louisiana State Mineral Board, nor shall the Louisiana State Mineral Board be obligated to refund any consideration paid by the Lessor prior to such modification, cancellation, or abrogation, including, but not limited to, bonuses, rentals and royalties.

NOTE: The Office of Mineral Resources will require a minimum bonus of \$230 per acre and a minimum royalty of 23%.

NOTE: The State of Louisiana does hereby reserve, and this lease shall be subject to, the imprescriptible right of surface use in the nature of a servitude in favor of the Department of Natural Resources, including its Offices and Commissions, for the sole purpose of implementing, constructing, servicing and maintaining approved coastal zone management and/or restoration projects. Utilization of any and all rights derived under this lease by the mineral lessee, its agents, successors or assigns, shall not interfere with nor hinder the reasonable surface use by the

Department of Natural Resources, its Offices or Commissions, as herein above reserved.

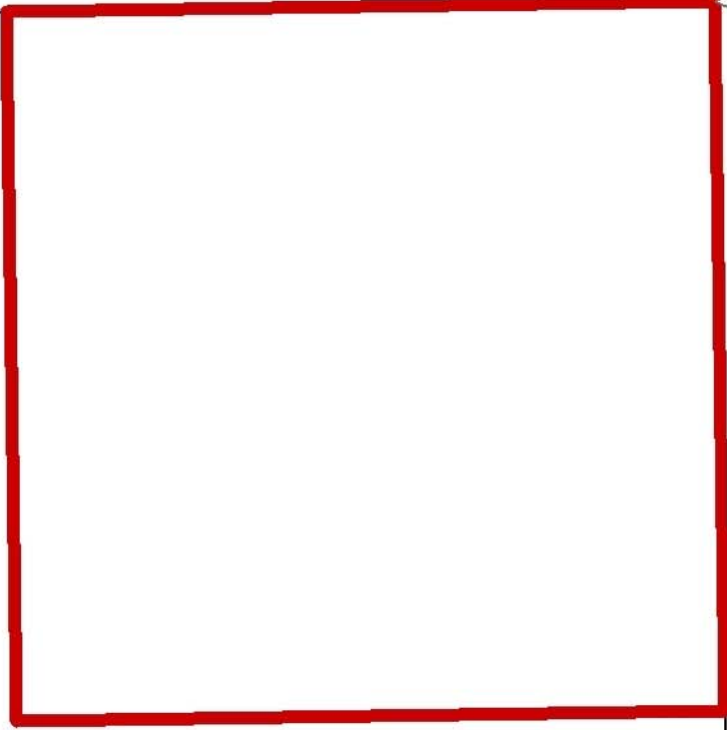
Applicant: MINERAL SERVICES, INC.

Bidder	Cash Payment	Price/Acre	Rental	Oil	Gas	Other



BLOCK CS0039

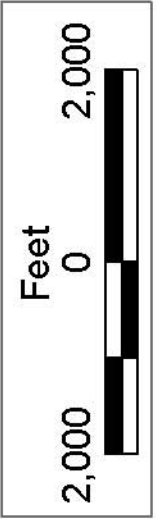
ST BERNARD PARISH



BLOCK CS0040

P.O.B.  
X=2,694,350.00  
Y=4,10,830.00

CHANDELEUR SOUND AREA



**TRACT 37719 - Plaquemines and St. Bernard Parishes, Louisiana**

All of the lands now or formerly constituting the beds and bottoms of all water bodies of every nature and description the title of which vests in the State of Louisiana, together with all islands arising therein and other lands formed by accretion or by reliction, where allowed by law, excepting tax adjudicated lands, and not presently under mineral lease on August 10, 2005, situated in Plaquemines and St. Bernard Parishes, Louisiana, and more particularly described as follows: Beginning at a point having Coordinates of X = 2,486,916.00 and Y = 398,693.00; thence North 9,863.00 feet to a point having Coordinates of X = 2,486,916.00 and Y = 408,556.00; thence North 16 degrees 49 minutes 00 seconds West 3,504.89 feet to a point having Coordinates of X = 2,485,902.00 and Y = 411,911.00; thence North 67 degrees 25 minutes 08 seconds East 4,203.23 feet to a point having Coordinates of X = 2,489,783.00 and Y = 413,525.00; thence East 5,241.00 feet to a point having Coordinates of X = 2,495,024.00 and Y = 413,525.00; thence South 14,832.00 feet to a point having Coordinates of X = 2,495,024.00 and Y = 398,693.00; thence West 8,108.00 feet to the point of beginning, containing approximately **259 acres**, all as more particularly outlined on a plat on file in the Office of Mineral Resources, Department of Natural Resources. All bearings, distances and coordinates are based on Louisiana Coordinate System of 1927, (North or South Zone), where applicable.

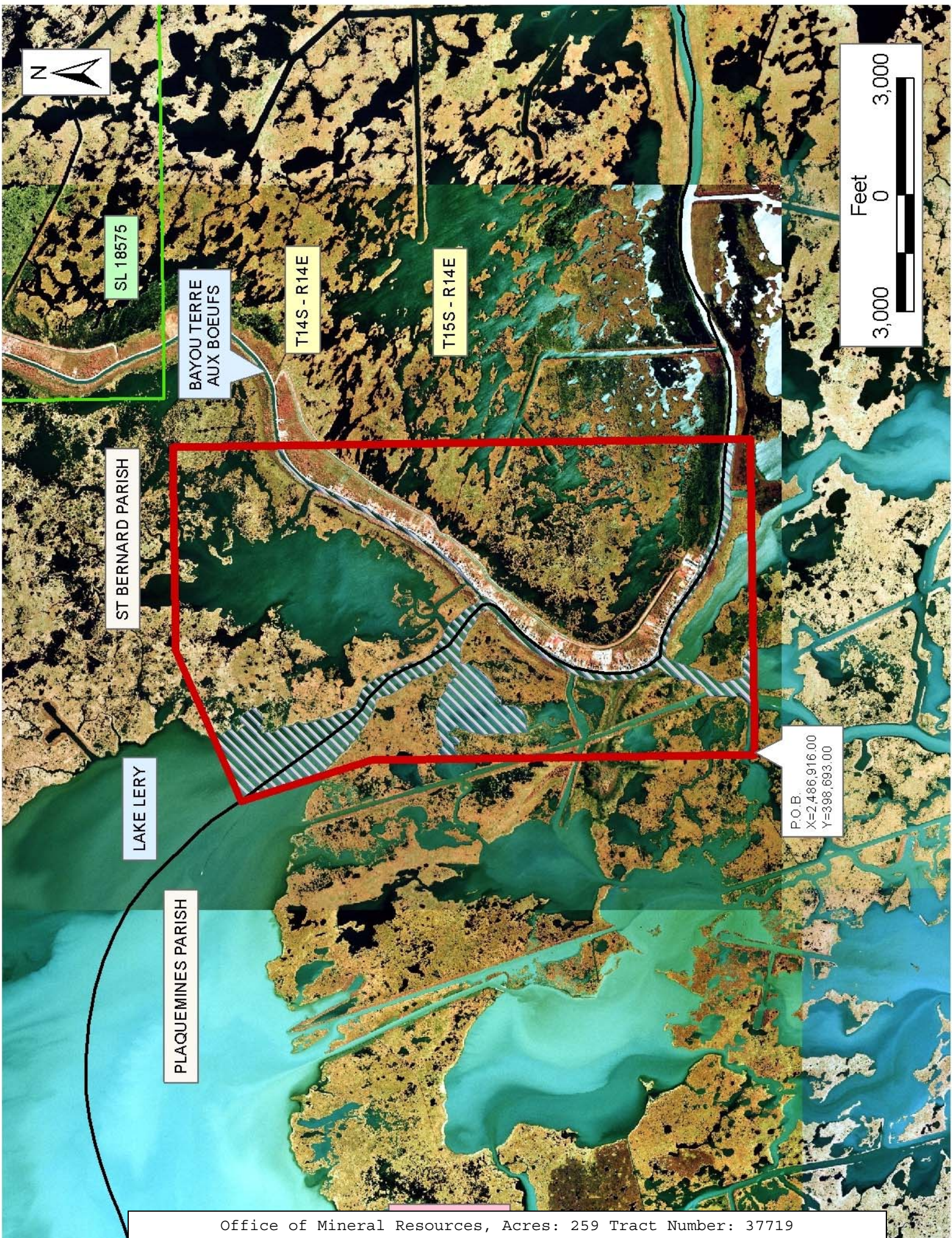
NOTE: The above description of the Tract nominated for lease has been provided and corrected, where required, exclusively by the nomination party. Any mineral lease selected from this Tract and awarded by the Louisiana State Mineral Board shall be without warranty of any kind, either express, implied, or statutory, including, but not limited to, the implied warranties of merchantability and fitness for a particular purpose. Should the mineral lease awarded by the Louisiana State Mineral Board be subsequently modified, cancelled or abrogated due to the existence of conflicting leases, operating agreements, private claims or other future obligations or conditions which may affect all or any portion of the leased Tract, it shall not relieve the Lessee of the obligation to pay any bonus due thereon to the Louisiana State Mineral Board, nor shall the Louisiana State Mineral Board be obligated to refund any consideration paid by the Lessor prior to such modification, cancellation, or abrogation, including, but not limited to, bonuses, rentals and royalties.

NOTE: The State of Louisiana does hereby reserve, and this lease shall be subject to, the imprescriptible right of surface use in the nature of a servitude in favor of the Department of Natural Resources, including its Offices and Commissions, for the sole purpose of implementing, constructing, servicing and maintaining approved coastal zone management and/or restoration projects. Utilization of any and all rights derived under this lease by the mineral lessee, its agents, successors or assigns, shall not interfere with nor hinder the reasonable surface use by the Department of Natural Resources, its Offices or Commissions, as herein above reserved.

NOTE: The Department of Wildlife and Fisheries has designated certain areas in the coastal waters of the State of Louisiana as Oyster Seed Bed Areas. The exact location of those Seed Bed Areas must be obtained from the Department of Wildlife and Fisheries and any work done under a mineral lease from the State of Louisiana may necessarily be conducted in conformity with the rules and regulations promulgated by the said Department of Wildlife and Fisheries for Oyster Seed Bed Areas.

Applicant: HAROLD J. ANDERSON, INC.

Bidder	Cash Payment	Price/Acre	Rental	Oil	Gas	Other



SL 18575

BAYOU TERRE  
AUX BOEUFIS

T14S - R14E

T15S - R14E

ST BERNARD PARISH

LAKE LERY

PLAQUEMINES PARISH

P.O.B.  
X=2,486,916.00  
Y=398,693.00



**TRACT 37720 - Portion of Block 53, Chandeleur Sound Area, St. Bernard Parish, Louisiana**

All of the lands now or formerly constituting the beds and bottoms of all water bodies of every nature and description the title of which vests in the State of Louisiana, together with all islands arising therein and other lands formed by accretion or by reliction, where allowed by law, excepting tax adjudicated lands, and not presently under mineral lease on August 10, 2005, situated in St. Bernard Parish, Louisiana, and more particularly described as follows: Beginning at the Northeast Corner of Block 53, Chandeleur Sound Area having Coordinates of X = 2,694,350.00 and Y = 410,830.00; thence South 7,375.00 feet along the East boundary of said Block 53 to a point having Coordinates of X = 2,694,350.00 and Y = 403,455.00; thence West 7,375.00 feet to a point having Coordinates of X = 2,686,975.00 and Y = 403,455.00; thence North 7,375.00 feet to the North boundary of said Block 53 to a point having Coordinates of X = 2,686,975.00 and Y = 410,830.00; thence East 7,375.00 feet along the North boundary of said Block 53 to the point of beginning, containing approximately **1,248.64 acres**, all as more particularly outlined on a plat on file in the Office of Mineral Resources, Department of Natural Resources. All bearings, distances and coordinates are based on Louisiana Coordinate System of 1927, (North or South Zone), where applicable.

NOTE: The above description of the Tract nominated for lease has been provided and corrected, where required, exclusively by the nomination party. Any mineral lease selected from this Tract and awarded by the Louisiana State Mineral Board shall be without warranty of any kind, either express, implied, or statutory, including, but not limited to, the implied warranties of merchantability and fitness for a particular purpose. Should the mineral lease awarded by the Louisiana State Mineral Board be subsequently modified, cancelled or abrogated due to the existence of conflicting leases, operating agreements, private claims or other future obligations or conditions which may affect all or any portion of the leased Tract, it shall not relieve the Lessee of the obligation to pay any bonus due thereon to the Louisiana State Mineral Board, nor shall the Louisiana State Mineral Board be obligated to refund any consideration paid by the Lessor prior to such modification, cancellation, or abrogation, including, but not limited to, bonuses, rentals and royalties.

NOTE: The Office of Mineral Resources will require a minimum bonus of \$190 per acre and a minimum royalty of 22%.

NOTE: The State of Louisiana does hereby reserve, and this lease shall be subject to, the imprescriptible right of surface use in the nature of a servitude in favor of the Department of Natural Resources, including its Offices and Commissions, for the sole purpose of implementing, constructing, servicing and maintaining approved coastal zone management and/or restoration projects. Utilization of any and all rights derived under this lease by the mineral lessee, its agents, successors or assigns, shall not interfere with nor hinder the reasonable surface use by the



Department of Natural Resources, its Offices or Commissions, as herein above reserved.

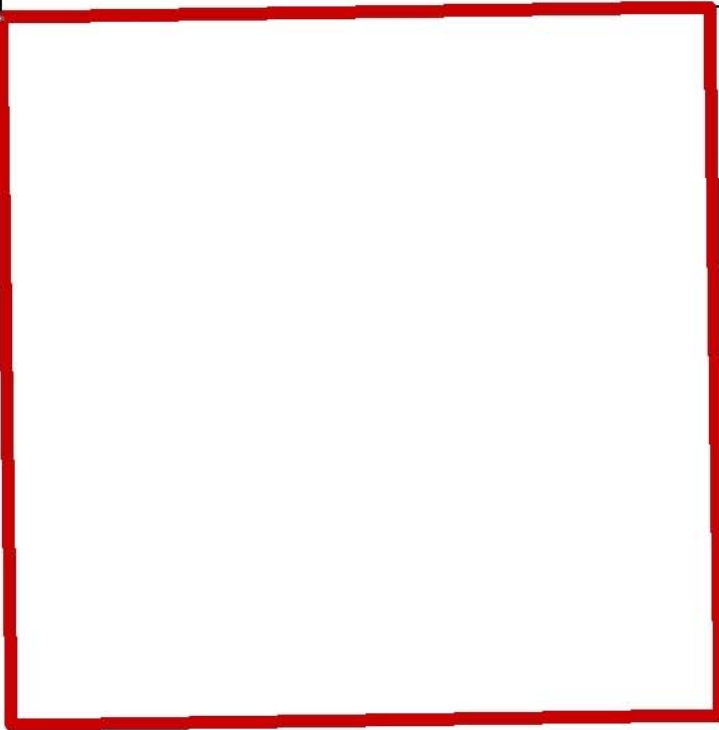
Applicant: MINERAL SERVICES, INC.

Bidder	Cash Payment	Price/Acre	Rental	Oil	Gas	Other



ST BERNARD PARISH

P.O.B.  
X=2,694,350.00  
Y=4,10,830.00



BLOCK CS0053

BLOCK CS0054

CHANDELEUR SOUND AREA



**TRACT 37721 - Portion of Block 54, Chandeleur Sound Area, St. Bernard Parish, Louisiana**

All of the lands now or formerly constituting the beds and bottoms of all water bodies of every nature and description the title of which vests in the State of Louisiana, together with all islands arising therein and other lands formed by accretion or by reliction, where allowed by law, excepting tax adjudicated lands, and not presently under mineral lease on August 10, 2005, situated in St. Bernard Parish, Louisiana, and more particularly described as follows: Beginning at the Northwest Corner of Block 54, Chandeleur Sound Area having Coordinates of X = 2,694,350.00 and Y = 410,830.00; thence East 7,375.00 feet along the North boundary of said Block 54 to a point having Coordinates of X = 2,701,725.00 and Y = 410,830.00; thence South 7,375.00 feet to a point having Coordinates of X = 2,701,725.00 and Y = 403,455.00; thence West 7,375.00 feet to a point on the West boundary of said Block 54 having Coordinates of X = 2,694,350.00 and Y = 403,455.00; thence North 7,375.00 feet along the West boundary of said Block 54 to the point of beginning, containing approximately **1,248.64 acres**, all as more particularly outlined on a plat on file in the Office of Mineral Resources, Department of Natural Resources. All bearings, distances and coordinates are based on Louisiana Coordinate System of 1927, (North or South Zone), where applicable.

NOTE: The above description of the Tract nominated for lease has been provided and corrected, where required, exclusively by the nomination party. Any mineral lease selected from this Tract and awarded by the Louisiana State Mineral Board shall be without warranty of any kind, either express, implied, or statutory, including, but not limited to, the implied warranties of merchantability and fitness for a particular purpose. Should the mineral lease awarded by the Louisiana State Mineral Board be subsequently modified, cancelled or abrogated due to the existence of conflicting leases, operating agreements, private claims or other future obligations or conditions which may affect all or any portion of the leased Tract, it shall not relieve the Lessee of the obligation to pay any bonus due thereon to the Louisiana State Mineral Board, nor shall the Louisiana State Mineral Board be obligated to refund any consideration paid by the Lessor prior to such modification, cancellation, or abrogation, including, but not limited to, bonuses, rentals and royalties.

NOTE: The Office of Mineral Resources will require a minimum bonus of \$190 per acre and a minimum royalty of 22%.

NOTE: The State of Louisiana does hereby reserve, and this lease shall be subject to, the imprescriptible right of surface use in the nature of a servitude in favor of the Department of Natural Resources, including its Offices and Commissions, for the sole purpose of implementing, constructing, servicing and maintaining approved coastal zone management and/or restoration projects. Utilization of any and all rights derived under this lease by the mineral lessee, its agents, successors or assigns, shall not interfere with nor hinder the reasonable surface use by the

Department of Natural Resources, its Offices or Commissions, as herein above reserved.

Applicant: MINERAL SERVICES, INC.

Bidder	Cash Payment	Price/Acre	Rental	Oil	Gas	Other



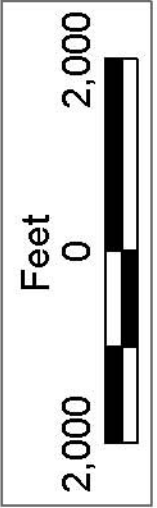
ST BERNARD PARISH

P.O.B.  
X=2,694,350.00  
Y=4,10,830.00

BLOCK CS0054

CHANDELEUR SOUND AREA

BLOCK CS0053



**TRACT 37722 - Portion of Block 54, Chandeleur Sound Area, St. Bernard Parish, Louisiana**

All of the lands now or formerly constituting the beds and bottoms of all water bodies of every nature and description the title of which vests in the State of Louisiana, together with all islands arising therein and other lands formed by accretion or by reliction, where allowed by law, excepting tax adjudicated lands, and not presently under mineral lease on August 10, 2005, situated in St. Bernard Parish, Louisiana, and more particularly described as follows: Beginning at a point on the West Boundary of Block 54, Chandeleur Sound Area having Coordinates of X = 2,694,350.00 and Y = 403,455.00; thence East 14,750.00 feet to a point on the East boundary of said Block 54 having Coordinates of X = 2,709,100.00 and Y = 403,455.00; thence South 7,375.00 feet along the East boundary of said Block 54 to its Southeast corner having Coordinates of X = 2,709,100.00 and Y = 396,080.00; thence West 14,750.00 feet along the South boundary of said Block 54 to its Southwest corner having Coordinates of X = 2,694,350.00 and Y = 396,080.00; thence North 7,375.00 feet along the West boundary of said Block 54 to the point of beginning, containing approximately **2,497.27 acres**, all as more particularly outlined on a plat on file in the Office of Mineral Resources, Department of Natural Resources. All bearings, distances and coordinates are based on Louisiana Coordinate System of 1927, (North or South Zone), where applicable.

NOTE: The above description of the Tract nominated for lease has been provided and corrected, where required, exclusively by the nomination party. Any mineral lease selected from this Tract and awarded by the Louisiana State Mineral Board shall be without warranty of any kind, either express, implied, or statutory, including, but not limited to, the implied warranties of merchantability and fitness for a particular purpose. Should the mineral lease awarded by the Louisiana State Mineral Board be subsequently modified, cancelled or abrogated due to the existence of conflicting leases, operating agreements, private claims or other future obligations or conditions which may affect all or any portion of the leased Tract, it shall not relieve the Lessee of the obligation to pay any bonus due thereon to the Louisiana State Mineral Board, nor shall the Louisiana State Mineral Board be obligated to refund any consideration paid by the Lessor prior to such modification, cancellation, or abrogation, including, but not limited to, bonuses, rentals and royalties.

NOTE: The Office of Mineral Resources will require a minimum bonus of \$190 per acre and a minimum royalty of 22%.

NOTE: The State of Louisiana does hereby reserve, and this lease shall be subject to, the imprescriptible right of surface use in the nature of a servitude in favor of the Department of Natural Resources, including its Offices and Commissions, for the sole purpose of implementing, constructing, servicing and maintaining approved coastal zone management and/or restoration projects. Utilization of any and all rights derived under this lease by the mineral lessee, its agents, successors or assigns,

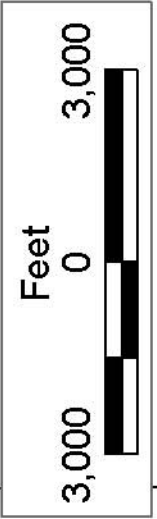
shall not interfere with nor hinder the reasonable surface use by the Department of Natural Resources, its Offices or Commissions, as herein above reserved.

Applicant: MINERAL SERVICES, INC.

Bidder	Cash Payment	Price/Acre	Rental	Oil	Gas	Other



SL 18333



CHANDELEUR SOUND AREA

ST BERNARD PARISH

BLOCK CS0054

BLOCK CS0065

P.O.B.  
X=2,694,350.00  
Y=403,455.00



**TRACT 37723 - Portion of Block 55, Chandeleur Sound Area, St. Bernard Parish, Louisiana**

All of the lands now or formerly constituting the beds and bottoms of all water bodies of every nature and description the title of which vests in the State of Louisiana, together with all islands arising therein and other lands formed by accretion or by reliction, where allowed by law, excepting tax adjudicated lands, and not presently under mineral lease on August 10, 2005, situated in St. Bernard Parish, Louisiana, and more particularly described as follows: Beginning at a point on the West boundary of Block 55, Chandeleur Sound Area having Coordinates of X = 2,709,100.00 and Y = 403,455.00; thence East 7,375.00 feet to a point having Coordinates of X = 2,716,475.00 and Y = 403,455.00; thence South 7,375.00 feet to a point on the South boundary of said Block 55 having Coordinates of X = 2,716,475.00 and Y = 396,080.00; thence West 7,375.00 feet along the South boundary of said Block 55 to its Southwest corner having Coordinates of X = 2,709,100.00 and Y = 396,080.00; thence North 7,375.00 feet along the West boundary of said Block 55 to the point of beginning, containing approximately **1,248.64 acres**, all as more particularly outlined on a plat on file in the Office of Mineral Resources, Department of Natural Resources. All bearings, distances and coordinates are based on Louisiana Coordinate System of 1927, (North or South Zone), where applicable.

NOTE: The above description of the Tract nominated for lease has been provided and corrected, where required, exclusively by the nomination party. Any mineral lease selected from this Tract and awarded by the Louisiana State Mineral Board shall be without warranty of any kind, either express, implied, or statutory, including, but not limited to, the implied warranties of merchantability and fitness for a particular purpose. Should the mineral lease awarded by the Louisiana State Mineral Board be subsequently modified, cancelled or abrogated due to the existence of conflicting leases, operating agreements, private claims or other future obligations or conditions which may affect all or any portion of the leased Tract, it shall not relieve the Lessee of the obligation to pay any bonus due thereon to the Louisiana State Mineral Board, nor shall the Louisiana State Mineral Board be obligated to refund any consideration paid by the Lessor prior to such modification, cancellation, or abrogation, including, but not limited to, bonuses, rentals and royalties.

NOTE: The Office of Mineral Resources will require a minimum bonus of \$230 per acre and a minimum royalty of 23%.

NOTE: The State of Louisiana does hereby reserve, and this lease shall be subject to, the imprescriptible right of surface use in the nature of a servitude in favor of the Department of Natural Resources, including its Offices and Commissions, for the sole purpose of implementing, constructing, servicing and maintaining approved coastal zone management and/or restoration projects. Utilization of any and all rights derived under this lease by the mineral lessee, its agents, successors or assigns,

shall not interfere with nor hinder the reasonable surface use by the Department of Natural Resources, its Offices or Commissions, as herein above reserved.

Applicant: MINERAL SERVICES, INC.

Bidder	Cash Payment	Price/Acre	Rental	Oil	Gas	Other

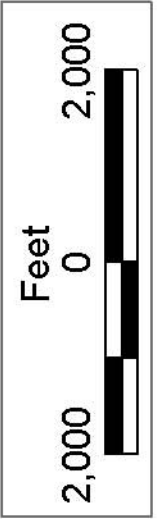


SL 18334

ST BERNARD PARISH

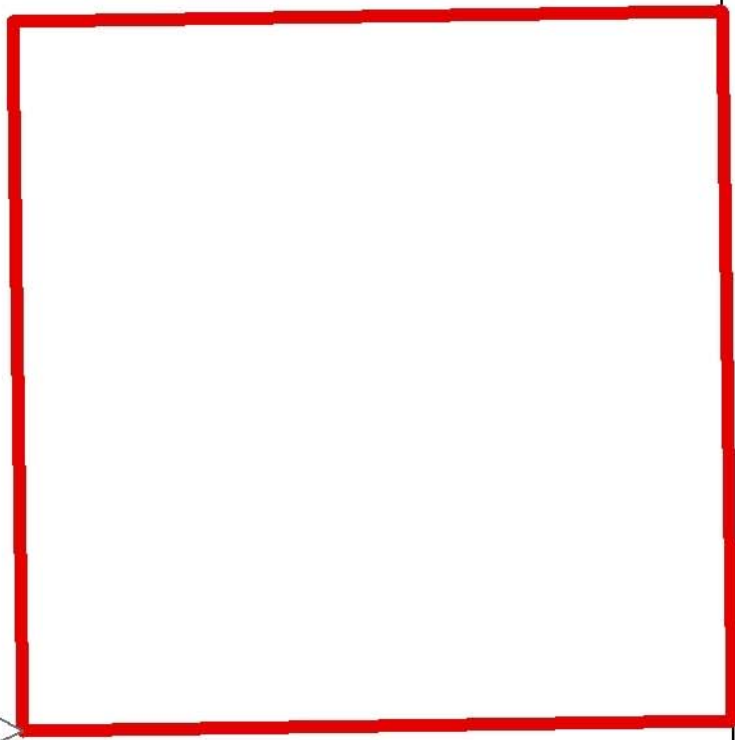
BLOCK CS0055

BLOCK CS0064



SL 18333

P.O.B.  
X=2,709,100.00  
Y=403,455.00



BLOCK CS0054

CHANDELEUR SOUND AREA

**TRACT 37724 - Portion of Block 65, Chandeleur Sound Area, St. Bernard Parish, Louisiana**

All of the lands now or formerly constituting the beds and bottoms of all water bodies of every nature and description the title of which vests in the State of Louisiana, together with all islands arising therein and other lands formed by accretion or by reliction, where allowed by law, excepting tax adjudicated lands, and not presently under mineral lease on August 10, 2005, situated in St. Bernard Parish, Louisiana, and more particularly described as follows: Beginning at the Northeast Corner of Block 65, Chandeleur Sound Area having Coordinates of X = 2,709,100.00 and Y = 396,080.00; thence South 14,750.00 feet along the East boundary of said Block 65 to its Southeast Corner having Coordinates of X = 2,709,100.00 and Y = 381,330.00; thence West 7,375.00 feet along the South boundary of said Block 65 to a point having Coordinates of X = 2,701,725.00 and Y = 381,330.00; thence North 14,750.00 feet to a point on the North boundary of said Block 65 having Coordinates of X = 2,701,725.00 and Y = 396,080.00; thence East 7,375.00 feet along the North boundary of said Block 65 to the point of beginning, containing approximately **2,497.27 acres**, all as more particularly outlined on a plat on file in the Office of Mineral Resources, Department of Natural Resources. All bearings, distances and coordinates are based on Louisiana Coordinate System of 1927, (North or South Zone), where applicable.

NOTE: The above description of the Tract nominated for lease has been provided and corrected, where required, exclusively by the nomination party. Any mineral lease selected from this Tract and awarded by the Louisiana State Mineral Board shall be without warranty of any kind, either express, implied, or statutory, including, but not limited to, the implied warranties of merchantability and fitness for a particular purpose. Should the mineral lease awarded by the Louisiana State Mineral Board be subsequently modified, cancelled or abrogated due to the existence of conflicting leases, operating agreements, private claims or other future obligations or conditions which may affect all or any portion of the leased Tract, it shall not relieve the Lessee of the obligation to pay any bonus due thereon to the Louisiana State Mineral Board, nor shall the Louisiana State Mineral Board be obligated to refund any consideration paid by the Lessor prior to such modification, cancellation, or abrogation, including, but not limited to, bonuses, rentals and royalties.

NOTE: The Office of Mineral Resources will require a minimum bonus of \$190 per acre and a minimum royalty of 22%.

NOTE: The State of Louisiana does hereby reserve, and this lease shall be subject to, the imprescriptible right of surface use in the nature of a servitude in favor of the Department of Natural Resources, including its Offices and Commissions, for the sole purpose of implementing, constructing, servicing and maintaining approved coastal zone management and/or restoration projects. Utilization of any and all rights derived under this lease by the mineral lessee, its agents, successors or assigns,

shall not interfere with nor hinder the reasonable surface use by the Department of Natural Resources, its Offices or Commissions, as herein above reserved.

Applicant: MINERAL SERVICES, INC.

Bidder	Cash Payment	Price/Acre	Rental	Oil	Gas	Other



P.O.B.  
X=2,709,100.00  
Y=396,080.00

ST BERNARD PARISH

BLOCK CS0064

CHANDELEUR  
SOUND AREA

BLOCK CS0065

BRETON SOUND AREA

