

**TRACT 37675 - Portion of Blocks 5, and 6, North Lake Borgne Area, St. Bernard Parish, Louisiana**

All of the lands now or formerly constituting the beds and bottoms of all water bodies of every nature and description the title of which vests in the State of Louisiana, together with all islands arising therein and other lands formed by accretion or by reliction, where allowed by law, excepting tax adjudicated lands, and not presently under mineral lease on August 10, 2005, situated in St. Bernard Parish, Louisiana, and more particularly described as follows: Beginning at a point within Block 5, North Lake Borgne Area, having Coordinates of X = 2,568,602.00 and Y = 513,810.00; thence East 10,122.39 feet to a point having Coordinates of X = 2,578,724.39 and Y = 513,810.00; thence South 11,585.00 feet to a point having Coordinates of X = 2,578,724.39 and Y = 502,225.00; thence West 1,214.39 feet to a point having Coordinates of X = 2,577,510.00 and Y = 502,225.00; thence South approximately 2,976 feet to a point on the boundary of the Biloxi Wildlife Management Area having a Coordinate of X = 2,577,510.00; thence Southwesterly on the boundary of said Biloxi Wildlife Management Area to the point of intersection with a North South line having a Coordinate of X = 2,575,023.00; thence North approximately 7,455 feet to a point having Coordinates of X = 2,575,023.00 and Y = 505,319.00; thence West 6,421.00 feet to a point within Block 6, having Coordinates of X = 2,568,602.00 and Y = 505,319.00; thence North 8,491.00 feet to the point of beginning, **LESS AND EXCEPT** that portion, if any, of the above described tract which may lie within the Biloxi Wildlife Management area, containing approximately **2,444 acres**, all as more particularly outlined on a plat on file in the Office of Mineral Resources, Department of Natural Resources. All bearings, distances and coordinates are based on Louisiana Coordinate System of 1927, (North or South Zone), where applicable.

NOTE: The above description of the Tract nominated for lease has been provided and corrected, where required, exclusively by the nomination party. Any mineral lease selected from this Tract and awarded by the Louisiana State Mineral Board shall be without warranty of any kind, either express, implied, or statutory, including, but not limited to, the implied warranties of merchantability and fitness for a particular purpose. Should the mineral lease awarded by the Louisiana State Mineral Board be subsequently modified, cancelled or abrogated due to the existence of conflicting leases, operating agreements, private claims or other future obligations or conditions which may affect all or any portion of the leased Tract, it shall not relieve the Lessee of the obligation to pay any bonus due thereon to the Louisiana State Mineral Board, nor shall the Louisiana State Mineral Board be obligated to refund any consideration paid by the Lessor prior to such modification, cancellation, or abrogation, including, but not limited to, bonuses, rentals and royalties.

NOTE: The Office of Mineral Resources will require a minimum bonus of \$230 per acre and a minimum royalty of 23%.

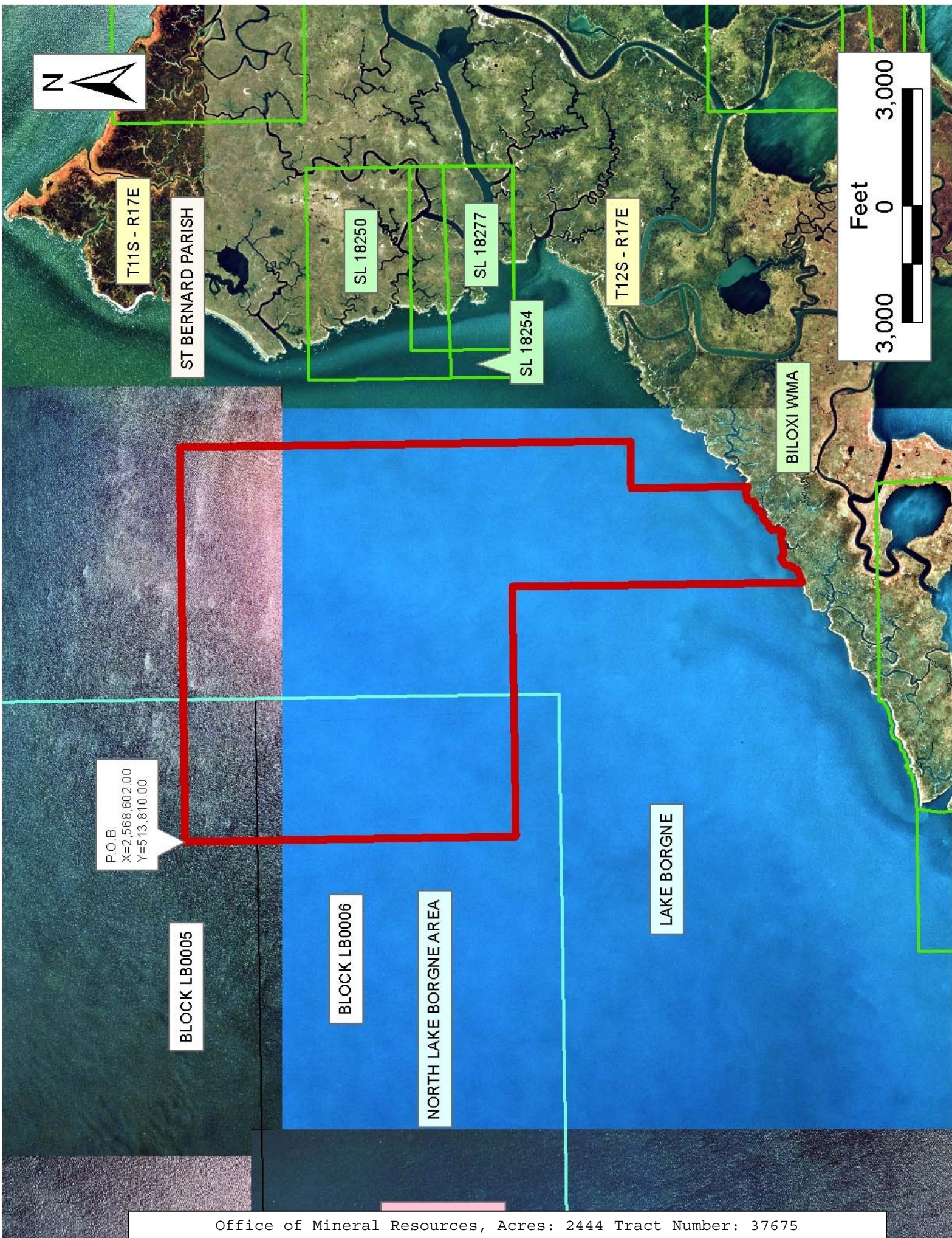
NOTE: The State of Louisiana does hereby reserve, and this lease shall be subject to, the imprescriptible right of surface use in the nature of a servitude in favor of the Department of Natural Resources, including its Offices and Commissions, for the sole purpose of implementing, constructing, servicing and maintaining approved coastal zone management and/or restoration projects. Utilization of any and all rights derived under this lease by the mineral lessee, its agents, successors or assigns, shall not interfere with nor hinder the reasonable surface use by the Department of Natural Resources, its Offices or Commissions, as herein above reserved.

NOTE: The Department of Wildlife and Fisheries has designated certain areas in the coastal waters of the State of Louisiana as Oyster Seed Bed Areas. The exact location of those Seed Bed Areas must be obtained from the Department of Wildlife and Fisheries and any work done under a mineral lease from the State of Louisiana may necessarily be conducted in conformity with the rules and regulations promulgated by the said Department of Wildlife and Fisheries for Oyster Seed Bed Areas.

Applicant: KARE-SUE ENERGY, INC.

Bidder	Cash Payment	Price/Acre	Rental	Oil	Gas	Other





P.O.B.  
X=2,568,602.00  
Y=513,810.00

BLOCK LB0005

BLOCK LB0006

NORTH LAKE BORGNE AREA

LAKE BORGNE

T11S - R17E

ST BERNARD PARISH

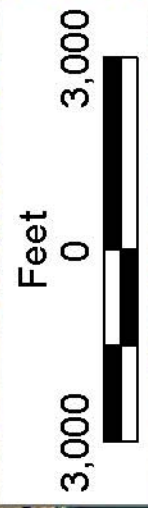
SL 18250

SL 18277

SL 18254

T12S - R17E

BILOXI WMA





**TRACT 37676 - Portion of Block 27, Chandeleur Sound Addition Area, Revised, St. Bernard Parish, Louisiana**

All of the lands now or formerly constituting the beds and bottoms of all water bodies of every nature and description the title of which vests in the State of Louisiana, together with all islands arising therein and other lands formed by accretion or by reliction, where allowed by law, excepting tax adjudicated lands, and not presently under mineral lease on August 10, 2005, situated in St. Bernard Parish, Louisiana, and more particularly described as follows: Beginning at a point on the South line of Block 27, Chandeleur Sound Area Addition, Revised having Coordinates of X = 2,686,975.00 and Y = 499,330.00; thence West 7,375.00 feet along the South line of said Block 27 to its Southwest corner having Coordinates of X = 2,679,600.00 and Y = 499,330.00; thence North 12,423.66 feet along the West line of said Block 27 to a point, also being the most Westerly Southwest corner of State Lease No. 17387 having Coordinates of X = 2,679,600.00 and Y = 511,753.66; thence along the boundary of said State Lease No. 17387 the following courses and distances: South 45 degrees 04 minutes 42 seconds East 4,304.19 feet and East 4,327.32 feet to a point on the South line of said State Lease No. 17387 having Coordinates of X = 2,686,975.00 and Y = 508,714.30; thence South 9,384.30 feet to the point of beginning, containing approximately **1,637 acres**, all as more particularly outlined on a plat on file in the Office of Mineral Resources, Department of Natural Resources. All bearings, distances and coordinates are based on Louisiana Coordinate System of 1927, (North or South Zone), where applicable.

NOTE: The above description of the Tract nominated for lease has been provided and corrected, where required, exclusively by the nomination party. Any mineral lease selected from this Tract and awarded by the Louisiana State Mineral Board shall be without warranty of any kind, either express, implied, or statutory, including, but not limited to, the implied warranties of merchantability and fitness for a particular purpose. Should the mineral lease awarded by the Louisiana State Mineral Board be subsequently modified, cancelled or abrogated due to the existence of conflicting leases, operating agreements, private claims or other future obligations or conditions which may affect all or any portion of the leased Tract, it shall not relieve the Lessee of the obligation to pay any bonus due thereon to the Louisiana State Mineral Board, nor shall the Louisiana State Mineral Board be obligated to refund any consideration paid by the Lessor prior to such modification, cancellation, or abrogation, including, but not limited to, bonuses, rentals and royalties.

NOTE: The Office of Mineral Resources will require a minimum bonus of \$230 per acre and a minimum royalty of 23%.

NOTE: The State of Louisiana does hereby reserve, and this lease shall be subject to, the imprescriptible right of surface use in the nature of a servitude in favor of the Department of Natural Resources, including its

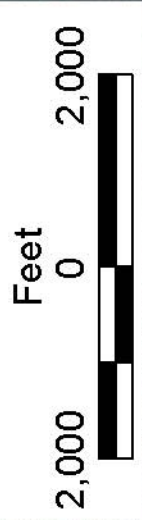
Offices and Commissions, for the sole purpose of implementing, constructing, servicing and maintaining approved coastal zone management and/or restoration projects. Utilization of any and all rights derived under this lease by the mineral lessee, its agents, successors or assigns, shall not interfere with nor hinder the reasonable surface use by the Department of Natural Resources, its Offices or Commissions, as herein above reserved.

NOTE: The Department of Wildlife and Fisheries has designated certain areas in the coastal waters of the State of Louisiana as Oyster Seed Bed Areas. The exact location of those Seed Bed Areas must be obtained from the Department of Wildlife and Fisheries and any work done under a mineral lease from the State of Louisiana may necessarily be conducted in conformity with the rules and regulations promulgated by the said Department of Wildlife and Fisheries for Oyster Seed Bed Areas.

Applicant: KARE-SUE ENERGY, INC.

Bidder	Cash Payment	Price/Acre	Rental	Oil	Gas	Other





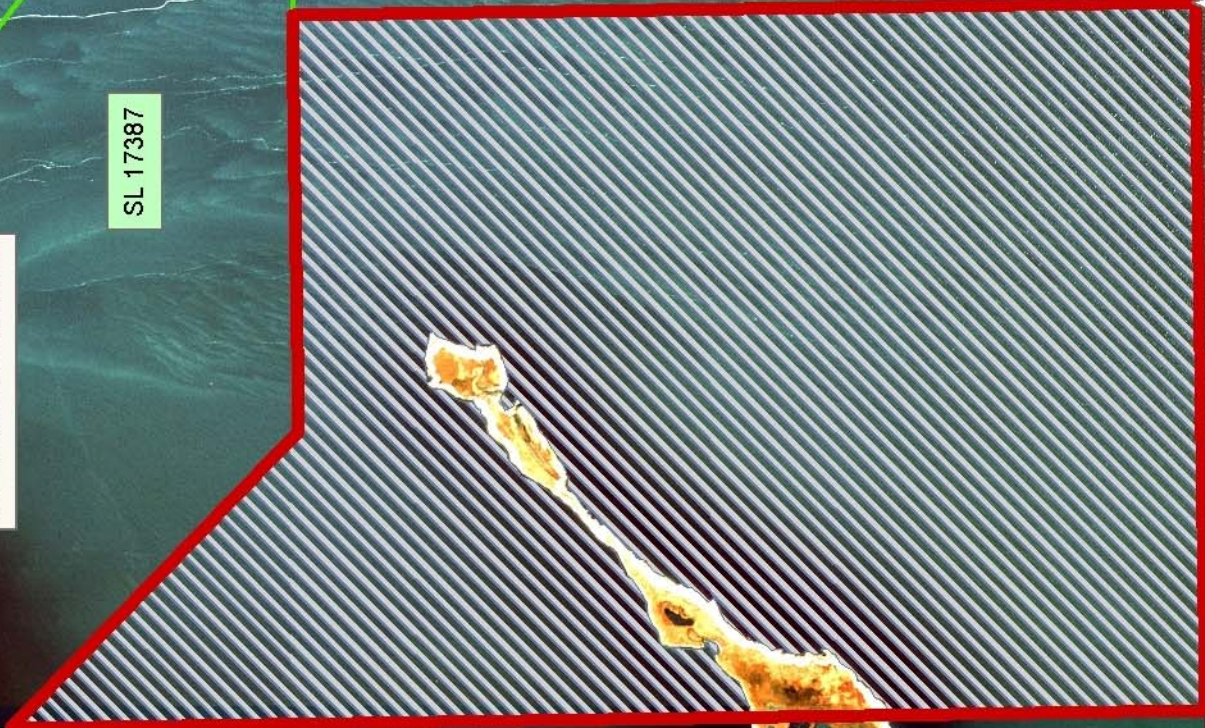
P.O.B.  
X=2,686,975.00  
Y=499,330.00

CHANDELEUR SOUND AREA  
ADDITION, REVISED

BLOCK CX0027

SL 17387

ST BERNARD PARISH



T12S - R20E

BLOCK CX0026



**TRACT 37677 - Portion of Block 6, North Lake Borgne Area, St. Bernard Parish, Louisiana**

All of the lands now or formerly constituting the beds and bottoms of all water bodies of every nature and description the title of which vests in the State of Louisiana, together with all islands arising therein and other lands formed by accretion or by reliction, where allowed by law, excepting tax adjudicated lands, and not presently under mineral lease on August 10, 2005, situated in St. Bernard Parish, Louisiana, and more particularly described as follows: Beginning at a point having Coordinates of X = 2,555,306.00 and Y = 497,162.00; thence North 1,276.88 feet to a point on the boundary of State Lease No. 18066 having Coordinates of X = 2,555,306.00 and Y = 498,438.88; thence along the boundary of said State Lease No. 18066 the following courses: North 34 degrees 36 minutes 37 seconds East 686.63 feet and North 58 degrees 47 minutes 32 seconds West 455.98 feet to a point having Coordinates of X = 2,555,306.00 and Y = 499,240.27; thence North 8,325.73 feet to a point within Block 6, North Lake Borgne Area, having Coordinates of X = 2,555,306.00 and Y = 507,566.00; thence East 6,367.00 feet to a point having Coordinates of X = 2,561,673.00 and Y = 507,566.00; thence South 10,404.00 feet to the point having Coordinates of X = 2,561,673.00 and Y = 497,162.00; thence West 6367.00 feet to the point of beginning, containing approximately **1,517.13 acres**, all as more particularly outlined on a plat on file in the Office of Mineral Resources, Department of Natural Resources. All bearings, distances and coordinates are based on Louisiana Coordinate System of 1927, (North or South Zone), where applicable.

NOTE: The above description of the Tract nominated for lease has been provided and corrected, where required, exclusively by the nomination party. Any mineral lease selected from this Tract and awarded by the Louisiana State Mineral Board shall be without warranty of any kind, either express, implied, or statutory, including, but not limited to, the implied warranties of merchantability and fitness for a particular purpose. Should the mineral lease awarded by the Louisiana State Mineral Board be subsequently modified, cancelled or abrogated due to the existence of conflicting leases, operating agreements, private claims or other future obligations or conditions which may affect all or any portion of the leased Tract, it shall not relieve the Lessee of the obligation to pay any bonus due thereon to the Louisiana State Mineral Board, nor shall the Louisiana State Mineral Board be obligated to refund any consideration paid by the Lessor prior to such modification, cancellation, or abrogation, including, but not limited to, bonuses, rentals and royalties.

NOTE: The Office of Mineral Resources will require a minimum bonus of \$230 per acre and a minimum royalty of 23%.

NOTE: The State of Louisiana does hereby reserve, and this lease shall be subject to, the imprescriptible right of surface use in the nature of a servitude in favor of the Department of Natural Resources, including its Offices and Commissions, for the sole purpose of implementing,

constructing, servicing and maintaining approved coastal zone management and/or restoration projects. Utilization of any and all rights derived under this lease by the mineral lessee, its agents, successors or assigns, shall not interfere with nor hinder the reasonable surface use by the Department of Natural Resources, its Offices or Commissions, as herein above reserved.

NOTE: The Department of Wildlife and Fisheries has designated certain areas in the coastal waters of the State of Louisiana as Oyster Seed Bed Areas. The exact location of those Seed Bed Areas must be obtained from the Department of Wildlife and Fisheries and any work done under a mineral lease from the State of Louisiana may necessarily be conducted in conformity with the rules and regulations promulgated by the said Department of Wildlife and Fisheries for Oyster Seed Bed Areas.

Applicant: KARE-SUE ENERGY, INC.

Bidder	Cash Payment	Price/Acre	Rental	Oil	Gas	Other

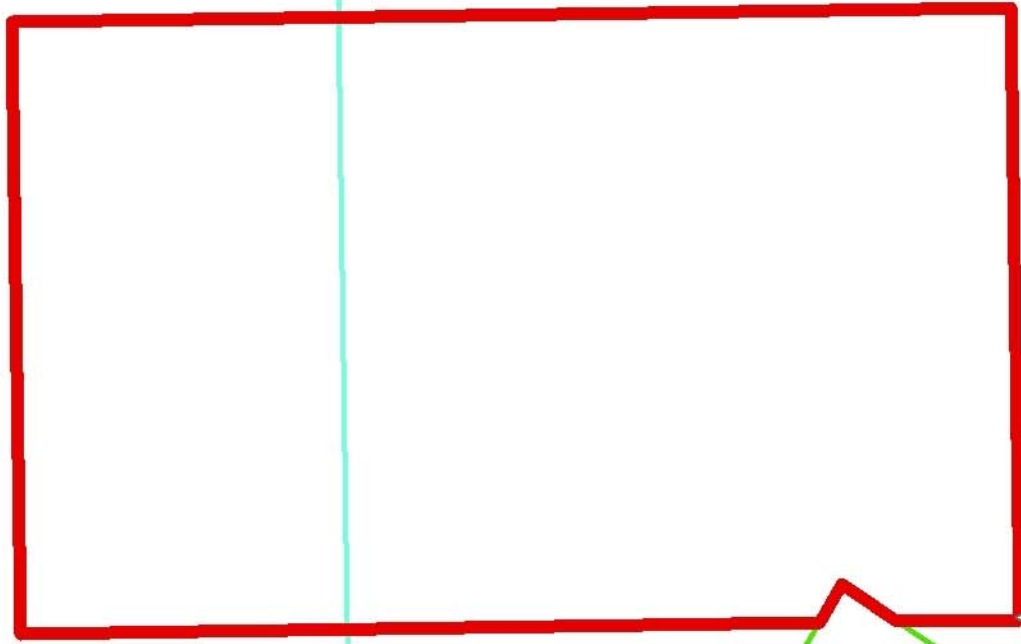
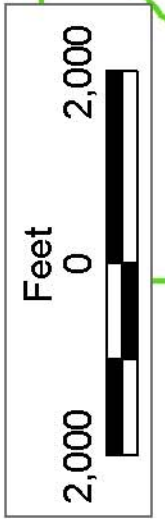




BLOCK LB0006

NORTH LAKE BORGNE AREA

ST BERNARD PARISH



P.O.B.  
X=2,555,306.00  
Y=497,162.00

SL 18567

SL 18066

SL 18065

SL 18067

**TRACT 37678 - Portion of Block 23, Chandeleur Sound Addition Area, Revised, St. Bernard Parish, Louisiana**

All of the lands now or formerly constituting the beds and bottoms of all water bodies of every nature and description the title of which vests in the State of Louisiana, together with all islands arising therein and other lands formed by accretion or by reliction, where allowed by law, excepting tax adjudicated lands, and not presently under mineral lease on August 10, 2005, situated in St. Bernard Parish, Louisiana, and more particularly described as follows: Beginning at a point on the East line of Block 23, Chandeleur Sound Area Addition, Revised having Coordinates of X = 2,635,350.00 and Y = 506,705.00; thence South 7,375.00 feet along the East line of said Block 23 to its Southeast corner having Coordinates of X = 2,635,350.00 and Y = 499,330.00; thence West 14,750.00 feet along the South line of said Block 23 to its Southwest corner having Coordinates of X = 2,620,600.00 and Y = 499,330.00; thence North 7,375.00 feet along the West line of said Block 23 to a point having Coordinates of X = 2,620,600.00 and Y = 506,705.00; thence East 14,750.00 feet to the point of beginning, containing approximately **2,383 acres**, all as more particularly outlined on a plat on file in the Office of Mineral Resources, Department of Natural Resources. All bearings, distances and coordinates are based on Louisiana Coordinate System of 1927, (North or South Zone), where applicable.

NOTE: The above description of the Tract nominated for lease has been provided and corrected, where required, exclusively by the nomination party. Any mineral lease selected from this Tract and awarded by the Louisiana State Mineral Board shall be without warranty of any kind, either express, implied, or statutory, including, but not limited to, the implied warranties of merchantability and fitness for a particular purpose. Should the mineral lease awarded by the Louisiana State Mineral Board be subsequently modified, cancelled or abrogated due to the existence of conflicting leases, operating agreements, private claims or other future obligations or conditions which may affect all or any portion of the leased Tract, it shall not relieve the Lessee of the obligation to pay any bonus due thereon to the Louisiana State Mineral Board, nor shall the Louisiana State Mineral Board be obligated to refund any consideration paid by the Lessor prior to such modification, cancellation, or abrogation, including, but not limited to, bonuses, rentals and royalties.

NOTE: The Office of Mineral Resources will require a minimum bonus of \$230 per acre and a minimum royalty of 23%.

NOTE: The State of Louisiana does hereby reserve, and this lease shall be subject to, the imprescriptible right of surface use in the nature of a servitude in favor of the Department of Natural Resources, including its Offices and Commissions, for the sole purpose of implementing, constructing, servicing and maintaining approved coastal zone management and/or restoration projects. Utilization of any and all rights derived under this lease by the mineral lessee, its agents, successors or assigns,

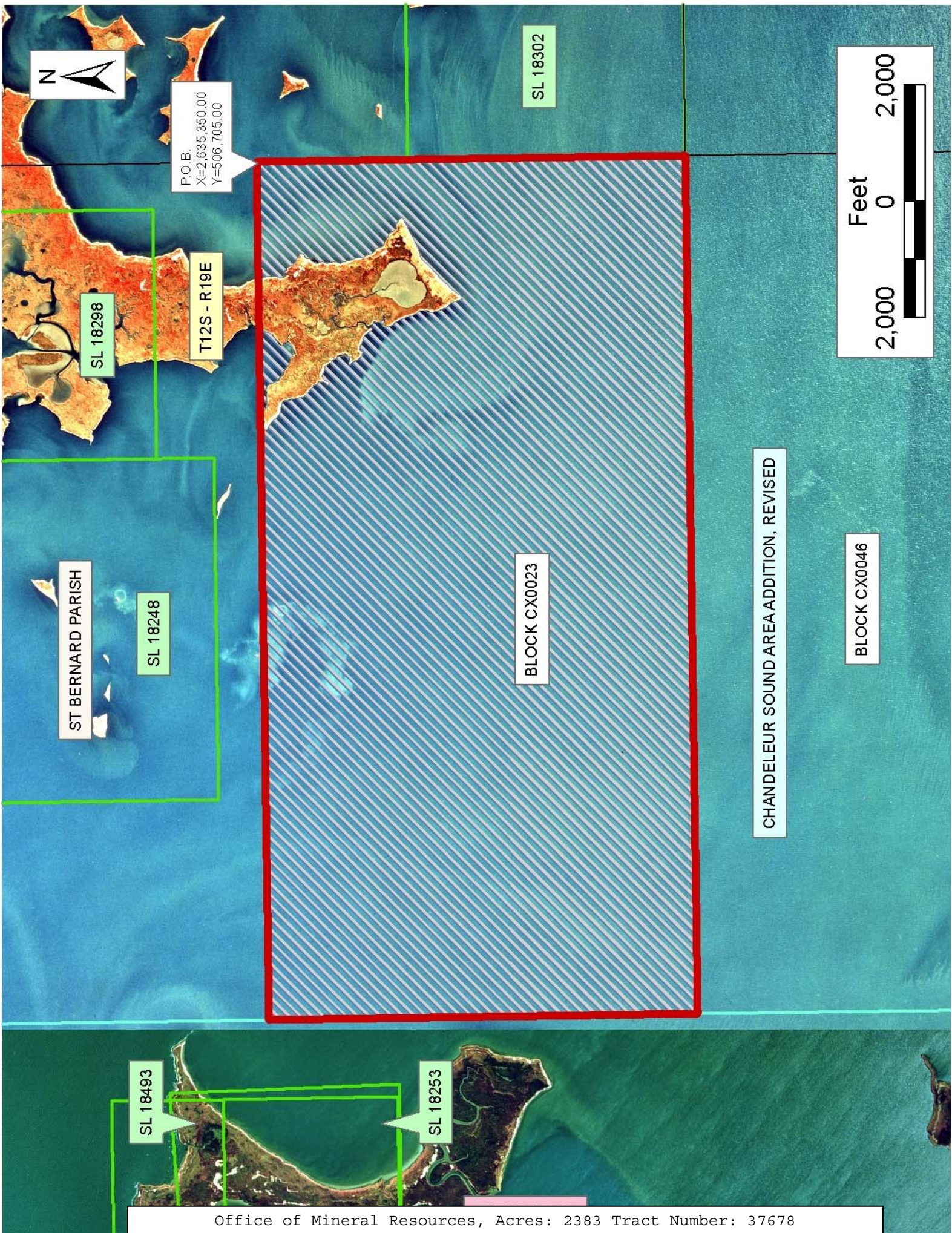
shall not interfere with nor hinder the reasonable surface use by the Department of Natural Resources, its Offices or Commissions, as herein above reserved.

NOTE: The Department of Wildlife and Fisheries has designated certain areas in the coastal waters of the State of Louisiana as Oyster Seed Bed Areas. The exact location of those Seed Bed Areas must be obtained from the Department of Wildlife and Fisheries and any work done under a mineral lease from the State of Louisiana may necessarily be conducted in conformity with the rules and regulations promulgated by the said Department of Wildlife and Fisheries for Oyster Seed Bed Areas.

Applicant: KARE-SUE ENERGY, INC.

Bidder	Cash Payment	Price/Acre	Rental	Oil	Gas	Other





P.O.B.  
X=2,635,350.00  
Y=506,705.00

ST BERNARD PARISH

SL 18248

SL 18298

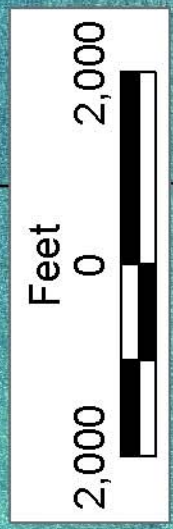
T12S - R19E

SL 18302

BLOCK CX0023

CHANDELEUR SOUND AREA ADDITION, REVISED

BLOCK CX0046



SL 18493

SL 18253



**TRACT 37679 - Portion of Block 24, Chandeleur Sound Addition Area, Revised, St. Bernard Parish, Louisiana**

All of the lands now or formerly constituting the beds and bottoms of all water bodies of every nature and description the title of which vests in the State of Louisiana, together with all islands arising therein and other lands formed by accretion or by reliction, where allowed by law, excepting tax adjudicated lands, and not presently under mineral lease on August 10, 2005, situated in St. Bernard Parish, Louisiana, and more particularly described as follows: Beginning at a point on the West line of Block 24, Chandeleur Sound Area Addition, Revised having Coordinates of X = 2,635,350.00 and Y = 506,705.00; thence East 11,530.50 feet to the Northwest corner of State Lease No. 18301 having Coordinates of X = 2,646,880.50 and Y = 506,705.00; thence along the boundary of said State Lease No. 18301 the following courses and distances: South 3,287.50 feet and North 89 degrees 47 minutes 03 seconds East 3,219.52 feet to the Southeast corner of said State Lease No. 18301, also being a point on the East line of said Block 24 having Coordinates of X = 2,650,100.00 and Y = 503,429.63; thence South 888.13 feet along the East line of said Block 24 to a point, also being the Northeast corner of State Lease No. 18303 having Coordinates of X = 2,650,100.00 and Y = 502,541.50; thence along the boundary of said State Lease No. 18303 the following courses and distances: West 1,088.05 feet and South 3,211.50 feet to the Southwest corner of said State Lease No. 18303, also being a point on the South line of said Block 24 having Coordinates of X = 2,649,011.95 and Y = 499,330.00; thence West 9,496.45 feet along the South line of said Block 24 to a point, also being the Southeast corner of State Lease No. 18302 having Coordinates of X = 2,639,515.50 and Y = 499,330.00; thence along the boundary of said State Lease No. 18302 the following courses and distances: North 4,772.98 feet and West 4,165.50 feet to the Northwest corner of said State Lease No. 18302, also being a point on the West line of said Block 24 having Coordinates of X = 2,635,350.00 and Y = 504,102.98; thence North 2,602.02 feet along the West line of said Block 24 to the point of beginning, containing approximately **1,582 acres**, all as more particularly outlined on a plat on file in the Office of Mineral Resources, Department of Natural Resources. All bearings, distances and coordinates are based on Louisiana Coordinate System of 1927, (North or South Zone), where applicable.

NOTE: The above description of the Tract nominated for lease has been provided and corrected, where required, exclusively by the nomination party. Any mineral lease selected from this Tract and awarded by the Louisiana State Mineral Board shall be without warranty of any kind, either express, implied, or statutory, including, but not limited to, the implied warranties of merchantability and fitness for a particular purpose. Should the mineral lease awarded by the Louisiana State Mineral Board be subsequently modified, cancelled or abrogated due to the existence of conflicting leases, operating agreements, private claims or other future obligations or conditions which may affect all or any portion of the leased Tract, it shall not relieve the Lessee of the obligation to

pay any bonus due thereon to the Louisiana State Mineral Board, nor shall the Louisiana State Mineral Board be obligated to refund any consideration paid by the Lessor prior to such modification, cancellation, or abrogation, including, but not limited to, bonuses, rentals and royalties.

NOTE: The Office of Mineral Resources will require a minimum bonus of \$230 per acre and a minimum royalty of 23%.

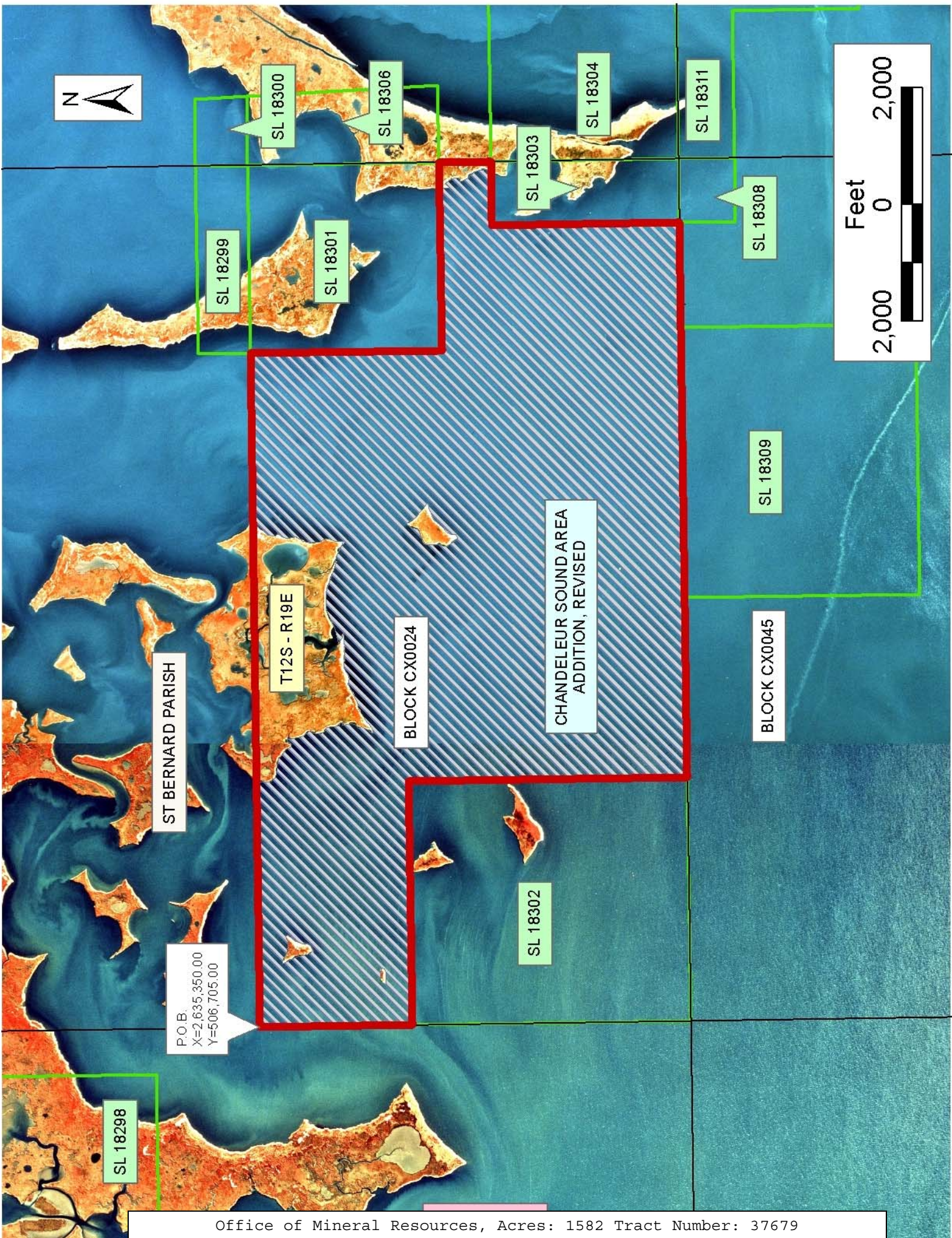
NOTE: The State of Louisiana does hereby reserve, and this lease shall be subject to, the imprescriptible right of surface use in the nature of a servitude in favor of the Department of Natural Resources, including its Offices and Commissions, for the sole purpose of implementing, constructing, servicing and maintaining approved coastal zone management and/or restoration projects. Utilization of any and all rights derived under this lease by the mineral lessee, its agents, successors or assigns, shall not interfere with nor hinder the reasonable surface use by the Department of Natural Resources, its Offices or Commissions, as herein above reserved.

NOTE: The Department of Wildlife and Fisheries has designated certain areas in the coastal waters of the State of Louisiana as Oyster Seed Bed Areas. The exact location of those Seed Bed Areas must be obtained from the Department of Wildlife and Fisheries and any work done under a mineral lease from the State of Louisiana may necessarily be conducted in conformity with the rules and regulations promulgated by the said Department of Wildlife and Fisheries for Oyster Seed Bed Areas.

Applicant: KARE-SUE ENERGY, INC.

Bidder	Cash Payment	Price/Acre	Rental	Oil	Gas	Other





ST BERNARD PARISH

P.O.B.  
X=2,635,350.00  
Y=506,705.00

T12S - R19E

BLOCK CX0024

CHANDELEUR SOUND AREA  
ADDITION, REVISED

BLOCK CX0045

SL 18309

SL 18298

SL 18299

SL 18301

SL 18300

SL 18306

SL 18303

SL 18304

SL 18311

SL 18308

SL 18302



**TRACT 37680 - Portion of Block 25, Chandeleur Sound Addition Area, Revised, St. Bernard Parish, Louisiana**

All of the lands now or formerly constituting the beds and bottoms of all water bodies of every nature and description the title of which vests in the State of Louisiana, together with all islands arising therein and other lands formed by accretion or by reliction, where allowed by law, excepting tax adjudicated lands, and not presently under mineral lease on August 10, 2005, situated in St. Bernard Parish, Louisiana, and more particularly described as follows: Beginning at a point on the East line of Block 25, Chandeleur Sound Area Addition, Revised having Coordinates of X = 2,664,850.00 and Y = 506,705.00; thence South 7,375.00 feet along the East line of said Block 25 to its Southeast corner having Coordinates of X = 2,664,850.00 and Y = 499,330.00; thence West 2,678.19 feet along the South line of said Block 25 to a point, also being the Southeast corner of State Lease No. 18305 having Coordinates of X = 2,662,171.81 and Y = 499,330.00; thence along the boundary of said State Lease No. 18305 the following courses and distances: North 669.28 feet, West 4,175.00 feet and South 669.28 feet to the Southwest corner of said State Lease No. 18305, also being a point on the South line of said Block 25 having Coordinates of X = 2,657,996.81 and Y = 499,330.00; thence West 3,725.07 feet along the South line of said Block 25 to a point, also being the Southeast corner of State Lease No. 18304 having Coordinates of X = 2,654,271.74 and Y = 499,330.00; thence along the boundary of said State Lease No. 18304 the following courses and distances: North 3,211.50 feet and West 4,171.74 feet to the Northwest corner of said State Lease No. 18304, also being a point on the West line of said Block 25 having Coordinates of X = 2,650,100.00 and Y = 502,541.50; thence North 888.13 feet along the West line of said Block 25 to a point, also being the Southwest corner of State Lease No. 18306 having Coordinates of X = 2,650,100.00 and Y = 503,429.63; thence along the boundary of said State Lease No. 18306 the following courses and distances: North 89 degrees 47 minutes 03 seconds East 1,320.90 feet and North 02 degrees 24 minutes 22 seconds West 3,273.27 feet to the Northeast corner of said State Lease No. 18306 having Coordinates of X = 2,651,283.47 and Y = 506,705.00; thence East 13,566.53 feet to the point of beginning, containing approximately **1,813 acres**, all as more particularly outlined on a plat on file in the Office of Mineral Resources, Department of Natural Resources. All bearings, distances and coordinates are based on Louisiana Coordinate System of 1927, (North or South Zone), where applicable.

NOTE: The above description of the Tract nominated for lease has been provided and corrected, where required, exclusively by the nomination party. Any mineral lease selected from this Tract and awarded by the Louisiana State Mineral Board shall be without warranty of any kind, either express, implied, or statutory, including, but not limited to, the implied warranties of merchantability and fitness for a particular purpose. Should the mineral lease awarded by the Louisiana State Mineral Board be subsequently modified, cancelled or abrogated due to the existence of conflicting leases, operating agreements, private claims or

other future obligations or conditions which may affect all or any portion of the leased Tract, it shall not relieve the Lessee of the obligation to pay any bonus due thereon to the Louisiana State Mineral Board, nor shall the Louisiana State Mineral Board be obligated to refund any consideration paid by the Lessor prior to such modification, cancellation, or abrogation, including, but not limited to, bonuses, rentals and royalties.

NOTE: The Office of Mineral Resources will require a minimum bonus of \$230 per acre and a minimum royalty of 23%.

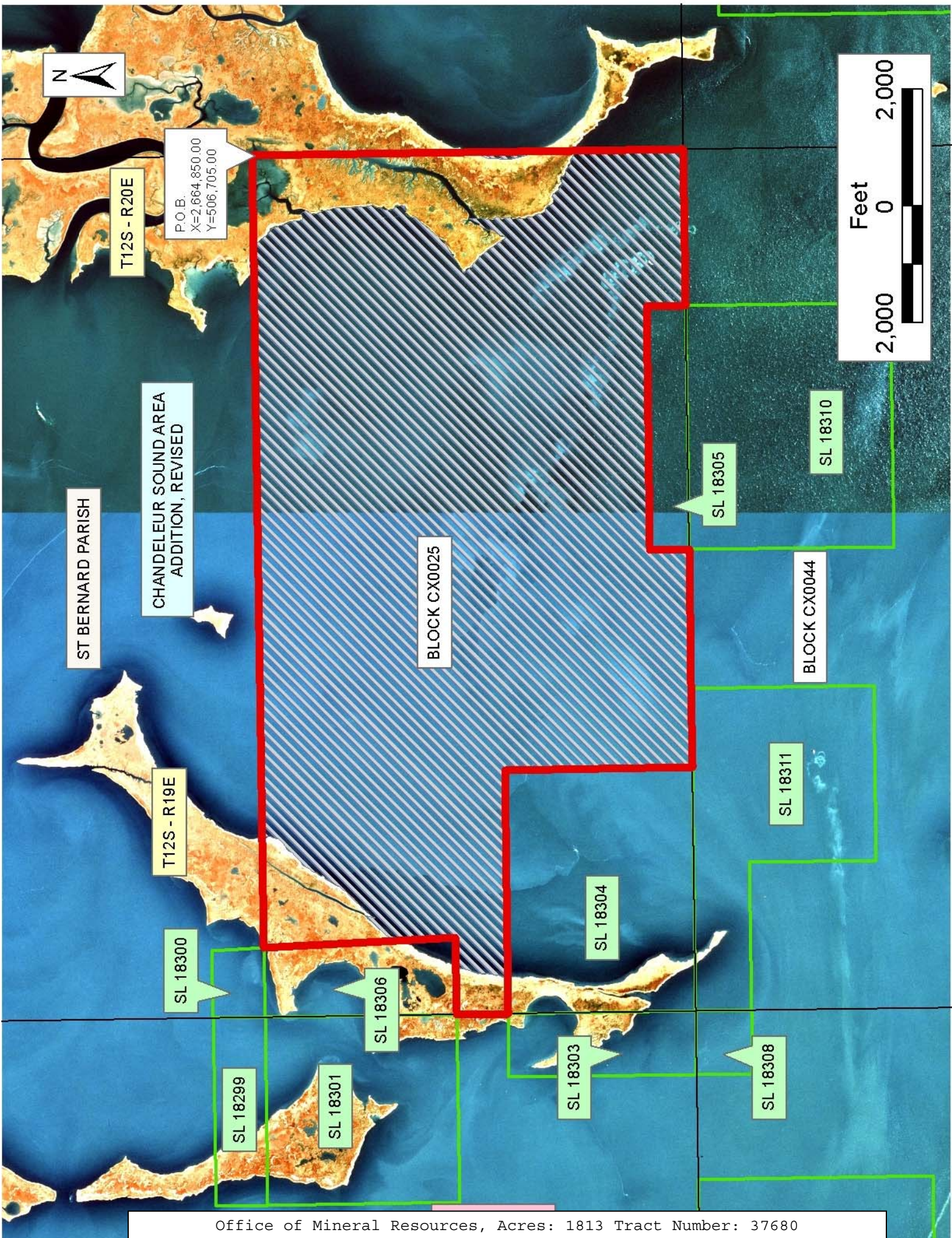
NOTE: The State of Louisiana does hereby reserve, and this lease shall be subject to, the imprescriptible right of surface use in the nature of a servitude in favor of the Department of Natural Resources, including its Offices and Commissions, for the sole purpose of implementing, constructing, servicing and maintaining approved coastal zone management and/or restoration projects. Utilization of any and all rights derived under this lease by the mineral lessee, its agents, successors or assigns, shall not interfere with nor hinder the reasonable surface use by the Department of Natural Resources, its Offices or Commissions, as herein above reserved.

NOTE: The Department of Wildlife and Fisheries has designated certain areas in the coastal waters of the State of Louisiana as Oyster Seed Bed Areas. The exact location of those Seed Bed Areas must be obtained from the Department of Wildlife and Fisheries and any work done under a mineral lease from the State of Louisiana may necessarily be conducted in conformity with the rules and regulations promulgated by the said Department of Wildlife and Fisheries for Oyster Seed Bed Areas.

Applicant: KARE-SUE ENERGY, INC.

Bidder	Cash Payment	Price/Acre	Rental	Oil	Gas	Other







**TRACT 37681 - Portion of Block 6, North Lake Borgne Area, St. Bernard Parish, Louisiana**

All of the lands now or formerly constituting the beds and bottoms of all water bodies of every nature and description the title of which vests in the State of Louisiana, together with all islands arising therein and other lands formed by accretion or by reliction, where allowed by law, excepting tax adjudicated lands, and not presently under mineral lease on August 10, 2005, situated in St. Bernard Parish, Louisiana, and more particularly described as follows: Beginning at a point having Coordinates of X = 2,561,673.00 and Y = 497,162.00; thence North 8,157.00 feet to a point within Block 6, North Lake Borgne Area, having Coordinates of X = 2,561,673.00 and Y = 505,319.00; thence East 13,350.00 feet to a point having Coordinates of X = 2,575,023.00 and Y = 505,319.00; thence South approximately 7,455 feet to a point on the boundary of the Biloxi Wildlife Management Area having a Coordinate of X = 2,575,023.00; thence Southwesterly along the boundary of said Biloxi Wildlife Management Area to the point of intersection with an East West line having a Coordinate of Y = 497,162.00; thence West approximately 12,112 feet to the point of beginning, **LESS AND EXCEPT** that portion thereof, if any, lying within the said Biloxi Wildlife Management Area, containing approximately **2,490 acres**, all as more particularly outlined on a plat on file in the Office of Mineral Resources, Department of Natural Resources. All bearings, distances and coordinates are based on Louisiana Coordinate System of 1927, (North or South Zone), where applicable.

NOTE: The above description of the Tract nominated for lease has been provided and corrected, where required, exclusively by the nomination party. Any mineral lease selected from this Tract and awarded by the Louisiana State Mineral Board shall be without warranty of any kind, either express, implied, or statutory, including, but not limited to, the implied warranties of merchantability and fitness for a particular purpose. Should the mineral lease awarded by the Louisiana State Mineral Board be subsequently modified, cancelled or abrogated due to the existence of conflicting leases, operating agreements, private claims or other future obligations or conditions which may affect all or any portion of the leased Tract, it shall not relieve the Lessee of the obligation to pay any bonus due thereon to the Louisiana State Mineral Board, nor shall the Louisiana State Mineral Board be obligated to refund any consideration paid by the Lessor prior to such modification, cancellation, or abrogation, including, but not limited to, bonuses, rentals and royalties.

NOTE: The Office of Mineral Resources will require a minimum bonus of \$230 per acre and a minimum royalty of 23%.

NOTE: The State of Louisiana does hereby reserve, and this lease shall be subject to, the imprescriptible right of surface use in the nature of a servitude in favor of the Department of Natural Resources, including its Offices and Commissions, for the sole purpose of implementing, constructing, servicing and maintaining approved coastal zone management

and/or restoration projects. Utilization of any and all rights derived under this lease by the mineral lessee, its agents, successors or assigns, shall not interfere with nor hinder the reasonable surface use by the Department of Natural Resources, its Offices or Commissions, as herein above reserved.

NOTE: The Department of Wildlife and Fisheries has designated certain areas in the coastal waters of the State of Louisiana as Oyster Seed Bed Areas. The exact location of those Seed Bed Areas must be obtained from the Department of Wildlife and Fisheries and any work done under a mineral lease from the State of Louisiana may necessarily be conducted in conformity with the rules and regulations promulgated by the said Department of Wildlife and Fisheries for Oyster Seed Bed Areas.

Applicant: KARE-SUE ENERGY, INC.

Bidder	Cash Payment	Price/Acre	Rental	Oil	Gas	Other



ST BERNARD PARISH

NORTH LAKE BORGNE AREA

BLOCK LB0006

LAKE BORGNE

BILOXI WMA

SL 17769

SL 17810

Feet

0

2,000

2,000

P.O.B.  
X=2,561,673.00  
Y=497,162.00



**TRACT 37682 - Portion of Block 43, Chandeleur Sound Addition Area, Revised, St. Bernard Parish, Louisiana**

All of the lands now or formerly constituting the beds and bottoms of all water bodies of every nature and description the title of which vests in the State of Louisiana, together with all islands arising therein and other lands formed by accretion or by reliction, where allowed by law, excepting tax adjudicated lands, and not presently under mineral lease on August 10, 2005, situated in St. Bernard Parish, Louisiana, and more particularly described as follows: Beginning at the Southwest corner of Block 43, Chandeleur Sound Area Addition, Revised having Coordinates of X = 2,664,850.00 and Y = 484,580.00; thence North 788.01 feet along the West line of said Block 43 to a point, also being the Southwest corner of State Lease No. 18316 having Coordinates of X = 2,664,850.00 and Y = 485,368.01; thence along the boundary of said State Lease No. 18316 the following courses and distances: East 1,466.18 feet, North 2,996.02 feet and West 1,466.18 feet to the Northwest corner of said State Lease No. 18316, also being a point on the West line of said Block 43 having Coordinates of X = 2,664,850.00 and Y = 488,364.03; thence North 10,965.97 feet along the West line of said Block 43 to its Northwest corner having Coordinates of X = 2,664,850.00 and Y = 499,330.00; thence East 13,336.00 feet along the North line of said Block 43 to a point having Coordinates of X = 2,678,186.00 and Y = 499,330.00; thence South 9,635.00 feet to a point having Coordinates of X = 2,678,186.00 and Y = 489,695.00; thence West 3,592.91 feet to a point on the East line of State Lease No. 18317 having Coordinates of X = 2,674,593.09 and Y = 489,695.00; thence North 00 degrees 07 minutes 28 seconds West 2,260.01 feet along the East line of said State Lease No. 18317 to its Northeast corner, also being the Southeast corner of State Lease No. 18307 having Coordinates of X = 2,674,588.18 and Y = 491,955.00; thence along the boundary of said State Lease No. 18307 the following courses and distances: North 00 degrees 07 minutes 28 seconds West 904.31 feet, South 86 degrees 43 minutes 58 seconds West 1,491.50 feet, North 01 degrees 38 minutes 06 seconds West 5,846.22 feet, North 89 degrees 18 minutes 20 seconds West 5,805.25 feet, South 6,733.50 feet and East 2,417.34 feet along the South line of said State Lease No. 18307 to a point, also being the Northwest corner of said State Lease No. 18317 having Coordinates of X = 2,669,542.84 and Y = 491,955.00; thence South 00 degrees 05 minutes 52 seconds East 2,260.00 feet along the West line of said State Lease No. 18317 to a point having Coordinates of X = 2,669,546.69 and Y = 489,695.00; thence West 738.69 feet to a point having Coordinates of X = 2,668,808.00 and Y = 489,695.00; thence South 5,115.00 feet to a point on the South line of said Block 43 having Coordinates of X = 2,668,808.00 and Y = 484,580.00; thence West 3,958.00 feet along the South line of said Block 43 to the point of beginning, containing approximately **2,090 acres**, all as more particularly outlined on a plat on file in the Office of Mineral Resources, Department of Natural Resources. All bearings, distances and coordinates are based on Louisiana Coordinate System of 1927, (North or South Zone), where applicable.

NOTE: The above description of the Tract nominated for lease has been provided and corrected, where required, exclusively by the nomination party. Any mineral lease selected from this Tract and awarded by the Louisiana State Mineral Board shall be without warranty of any kind, either express, implied, or statutory, including, but not limited to, the implied warranties of merchantability and fitness for a particular purpose. Should the mineral lease awarded by the Louisiana State Mineral Board be subsequently modified, cancelled or abrogated due to the existence of conflicting leases, operating agreements, private claims or other future obligations or conditions which may affect all or any portion of the leased Tract, it shall not relieve the Lessee of the obligation to pay any bonus due thereon to the Louisiana State Mineral Board, nor shall the Louisiana State Mineral Board be obligated to refund any consideration paid by the Lessor prior to such modification, cancellation, or abrogation, including, but not limited to, bonuses, rentals and royalties.

NOTE: The Office of Mineral Resources will require a minimum bonus of \$230 per acre and a minimum royalty of 23%.

NOTE: The State of Louisiana does hereby reserve, and this lease shall be subject to, the imprescriptible right of surface use in the nature of a servitude in favor of the Department of Natural Resources, including its Offices and Commissions, for the sole purpose of implementing, constructing, servicing and maintaining approved coastal zone management and/or restoration projects. Utilization of any and all rights derived under this lease by the mineral lessee, its agents, successors or assigns, shall not interfere with nor hinder the reasonable surface use by the Department of Natural Resources, its Offices or Commissions, as herein above reserved.

NOTE: The Department of Wildlife and Fisheries has designated certain areas in the coastal waters of the State of Louisiana as Oyster Seed Bed Areas. The exact location of those Seed Bed Areas must be obtained from the Department of Wildlife and Fisheries and any work done under a mineral lease from the State of Louisiana may necessarily be conducted in conformity with the rules and regulations promulgated by the said Department of Wildlife and Fisheries for Oyster Seed Bed Areas.

Bidder	Cash Payment	Price/Acre	Rental	Oil	Gas	Other

Applicant: KARE-SUE ENERGY, INC.





SL 18373

SL 17659



CHANDELEUR SOUND AREA ADDITION, REVISED



SL 18307

T12S - R20E

SL 18317

SL 18315

SL 18320

BLOCK CX0043

BLOCK CX0050

SL 18316

SL 18314

P.O.B.  
X=2,664,850.00  
Y=484,580.00

SL 18321

SL 18318

SL 18305

SL 18310

ST BERNARD PARISH



**TRACT 37683 - Portion of Blocks 42, 43, and 51, Chandeleur Sound Addition Area, Revised, St. Bernard Parish, Louisiana**

All of the lands now or formerly constituting the beds and bottoms of all water bodies of every nature and description the title of which vests in the State of Louisiana, together with all islands arising therein and other lands formed by accretion or by reliction, where allowed by law, excepting tax adjudicated lands, and not presently under mineral lease on August 10, 2005, situated in St. Bernard Parish, Louisiana, and more particularly described as follows: Beginning at a point on the North line of Block 42, Chandeleur Sound Area Addition, Revised having Coordinates of X = 2,686,975.00 and Y = 499,330.00; thence South 14,750.00 feet to a point on the South line of said Block 42 having Coordinates of X = 2,686,975.00 and Y = 484,580.00; thence West 20.19 feet along the South line of said Block 42 to a point, also being the Northeast corner of State Lease No. 17659 having Coordinates of X = 2,686,954.81 and Y = 484,580.00; thence along the boundary of said State Lease No. 17659 the following courses and distances: West 4,244.19 feet and South 39 degrees 08 minutes 33 seconds West 2,128.50 feet to a point on the Northwesterly boundary line of said State Lease No. 17659 having Coordinates of X = 2,681,367.00 and Y = 482,929.18; thence North 1,650.82 feet to a point on the North line of Block 51, also being a point on the South line of said Block 42 having Coordinates of X = 2,681,367.00 and Y = 484,580.00; thence North 5,115.00 feet to a point having Coordinates of X = 2,681,367.00 and Y = 489,695.00; thence West 1,767.00 feet to a point on the West line of said Block 42, also being a point on the East line of Block 43, having Coordinates of X = 2,679,600.00 and Y = 489,695.00; thence West 1,414.00 feet to a point having Coordinates of X = 2,678,186.00 and Y = 489,695.00; thence North 9,635.00 feet to a point on the North line of said Block 43 having Coordinates of X = 2,678,186.00 and Y = 499,330.00; thence East 1,414.00 feet along the North line of said Block 43 to its Northeast corner, also being the Northwest corner of said Block 42 having Coordinates of X = 2,679,600.00 and Y = 499,330.00; thence East 7,375.00 feet along the North line of said Block 42 to the point of beginning, **LESS AND EXCEPT** all those portions of State Lease No. 18373, as amended, that may lie within the above described tract, being more particularly described as follows: Beginning at a point having Coordinates of X = 2,681,275.20 and Y = 495,981.81, thence East 2951.61 feet to a point, South 2951.61 feet to a point, West 2951.61 feet to a point, North 2951.61 feet to the point of beginning, containing approximately **2,428.01 acres**, all as more particularly outlined on a plat on file in the Office of Mineral Resources, Department of Natural Resources. All bearings, distances and coordinates are based on Louisiana Coordinate System of 1927, (North or South Zone), where applicable.

NOTE: The above description of the Tract nominated for lease has been provided and corrected, where required, exclusively by the nomination party. Any mineral lease selected from this Tract and awarded by the Louisiana State Mineral Board shall be without warranty of any kind, either express, implied, or statutory, including, but not limited to, the

implied warranties of merchantability and fitness for a particular purpose. Should the mineral lease awarded by the Louisiana State Mineral Board be subsequently modified, cancelled or abrogated due to the existence of conflicting leases, operating agreements, private claims or other future obligations or conditions which may affect all or any portion of the leased Tract, it shall not relieve the Lessee of the obligation to pay any bonus due thereon to the Louisiana State Mineral Board, nor shall the Louisiana State Mineral Board be obligated to refund any consideration paid by the Lessor prior to such modification, cancellation, or abrogation, including, but not limited to, bonuses, rentals and royalties.

NOTE: The Office of Mineral Resources will require a minimum bonus of \$230 per acre and a minimum royalty of 23%.

NOTE: The State of Louisiana does hereby reserve, and this lease shall be subject to, the imprescriptible right of surface use in the nature of a servitude in favor of the Department of Natural Resources, including its Offices and Commissions, for the sole purpose of implementing, constructing, servicing and maintaining approved coastal zone management and/or restoration projects. Utilization of any and all rights derived under this lease by the mineral lessee, its agents, successors or assigns, shall not interfere with nor hinder the reasonable surface use by the Department of Natural Resources, its Offices or Commissions, as herein above reserved.

NOTE: The Department of Wildlife and Fisheries has designated certain areas in the coastal waters of the State of Louisiana as Oyster Seed Bed Areas. The exact location of those Seed Bed Areas must be obtained from the Department of Wildlife and Fisheries and any work done under a mineral lease from the State of Louisiana may necessarily be conducted in conformity with the rules and regulations promulgated by the said Department of Wildlife and Fisheries for Oyster Seed Bed Areas.

Applicant: KARE-SUE ENERGY, INC.

Bidder	Cash Payment	Price/Acre	Rental	Oil	Gas	Other





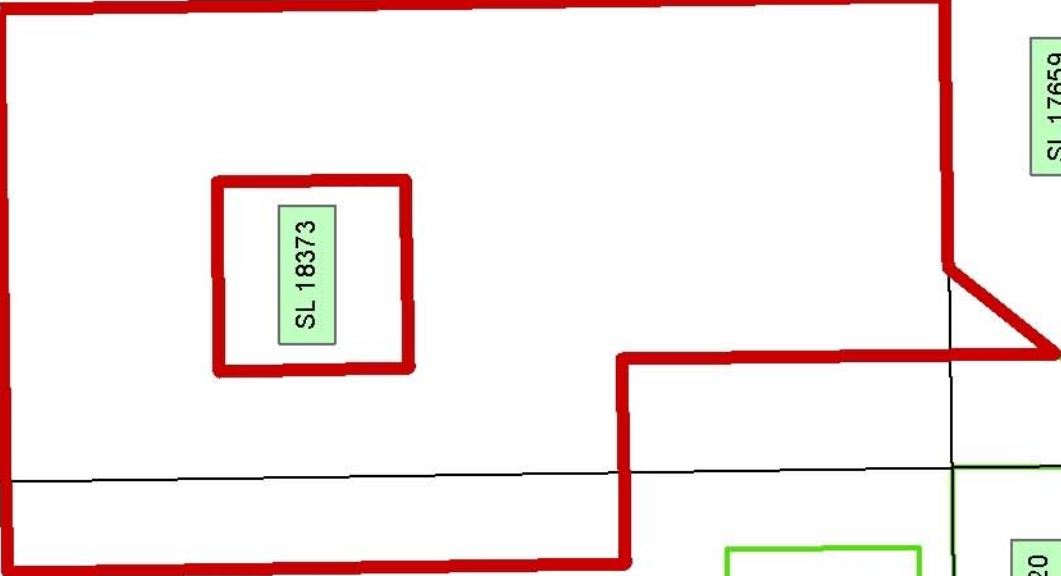
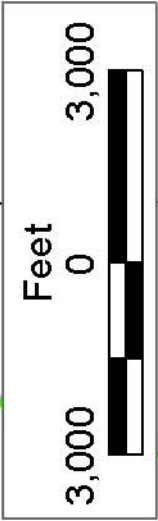
P.O.B.  
X=2,686,975.00  
Y=499,330.00

ST BERNARD PARISH

BLOCK CX0042

CHANDELEUR SOUND AREA  
ADDITION, REVISED

BLOCK CX0051



SL 18373

SL 17659

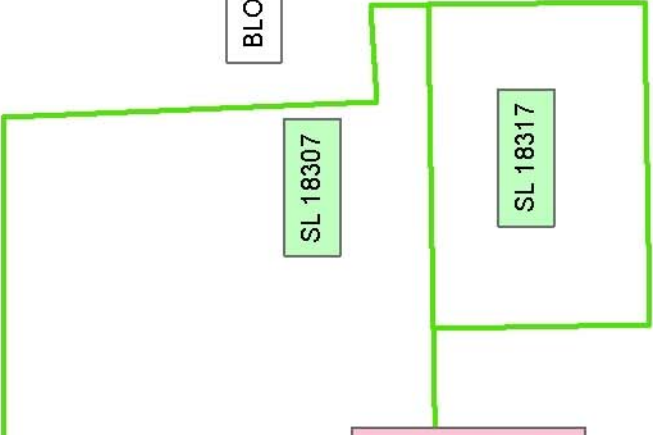
BLOCK CX0043



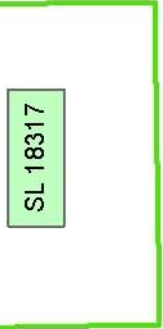
SL 18315



SL 18320



SL 18307



SL 18317

**TRACT 37684 - Portion of Block 42, Chandeleur Sound Addition Area, Revised, St. Bernard Parish, Louisiana**

All of the lands now or formerly constituting the beds and bottoms of all water bodies of every nature and description the title of which vests in the State of Louisiana, together with all islands arising therein and other lands formed by accretion or by reliction, where allowed by law, excepting tax adjudicated lands, and not presently under mineral lease on August 10, 2005, situated in St. Bernard Parish, Louisiana, and more particularly described as follows: Beginning at a point on the North line of Block 42, Chandeleur Sound Area Addition, Revised having Coordinates of X = 2,686,975.00 and Y = 499,330.00; thence East 7,375.00 feet along the North line of said Block 42 to its Northeast corner having Coordinates of X = 2,694,350.00 and Y = 499,330.00; thence South 14,750.00 feet along the East line of said Block 42 to its Southeast corner having Coordinates of X = 2,694,350.00 and Y = 484,580.00; thence West 7,375.00 feet along the South line of said Block 42 to a point having Coordinates of X = 2,686,975.00 and Y = 484,580.00; thence North 14,750.00 feet to the point of beginning, containing approximately **2,497.27 acres**, all as more particularly outlined on a plat on file in the Office of Mineral Resources, Department of Natural Resources. All bearings, distances and coordinates are based on Louisiana Coordinate System of 1927, (North or South Zone), where applicable.

NOTE: The above description of the Tract nominated for lease has been provided and corrected, where required, exclusively by the nomination party. Any mineral lease selected from this Tract and awarded by the Louisiana State Mineral Board shall be without warranty of any kind, either express, implied, or statutory, including, but not limited to, the implied warranties of merchantability and fitness for a particular purpose. Should the mineral lease awarded by the Louisiana State Mineral Board be subsequently modified, cancelled or abrogated due to the existence of conflicting leases, operating agreements, private claims or other future obligations or conditions which may affect all or any portion of the leased Tract, it shall not relieve the Lessee of the obligation to pay any bonus due thereon to the Louisiana State Mineral Board, nor shall the Louisiana State Mineral Board be obligated to refund any consideration paid by the Lessor prior to such modification, cancellation, or abrogation, including, but not limited to, bonuses, rentals and royalties.

NOTE: The Office of Mineral Resources will require a minimum bonus of \$230 per acre and a minimum royalty of 23%.

NOTE: The State of Louisiana does hereby reserve, and this lease shall be subject to, the imprescriptible right of surface use in the nature of a servitude in favor of the Department of Natural Resources, including its Offices and Commissions, for the sole purpose of implementing, constructing, servicing and maintaining approved coastal zone management and/or restoration projects. Utilization of any and all rights derived under this lease by the mineral lessee, its agents, successors or assigns,

shall not interfere with nor hinder the reasonable surface use by the Department of Natural Resources, its Offices or Commissions, as herein above reserved.

Applicant: KARE-SUE ENERGY, INC.

Bidder	Cash Payment	Price/Acre	Rental	Oil	Gas	Other

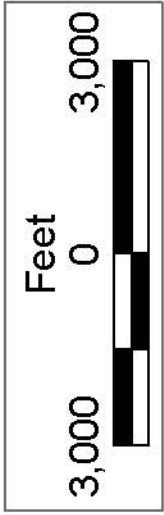




SL 17388

ST BERNARD PARISH

BLOCK CX0041



CHANDELEUR SOUND AREA ADDITION, REVISED

P.O.B.  
X=2,686,975.00  
Y=499,330.00

BLOCK CX0042

SL 18373

SL 17659

SL 18315

SL 18320