

**TRACT 37636 - Portion of Block 12, West Cameron Area, Revised, Cameron Parish, Louisiana**

The beds and bottoms of all water bodies belonging to the State of Louisiana located in Block 12, West Cameron Area, Revised, together with any present lands formed by accretion to the shoreline or islands formed therein, located in Cameron Parish, Louisiana, owned by and not presently under mineral lease as of August 10, 2005, from the State of Louisiana, the geographical area of which is more fully described as follows: Beginning at the Southwest corner of Block 12, West Cameron Area, Revised having Coordinates of X = 1,258,629.28 and Y = 393,790.24; thence North 7,046.56 feet on the West line of said Block 12 to its Northwest corner having Coordinates of X = 1,258,629.28 and Y = 400,836.80; thence Northeasterly on a straight line to a point having Coordinates of X = 1,259,600 and Y = 400,971; thence Northeasterly on a straight line to a point having Coordinates of X = 1,264,910 and Y = 401,500; thence Northeasterly on a straight line to the Northeast corner of said Block 12 having Coordinates of X = 1,273,387.33 and Y = 402,202.63; thence South 8,412.39 feet on the East line of said Block 12 to its Southeast corner having Coordinates of X = 1,273,387.33 and Y = 393,790.24; thence West 14,758.05 feet on the South line of said Block 12 to the point of beginning, **LESS AND EXCEPT** those portions of State Lease No. 18286 and State Lease No. 18289 that lie within the above described tract, more particularly described as follows: Beginning at the Northwest corner of State Lease No. 18286 having Coordinates of X = 1,262,203.47 and Y = 399,673.23; thence along the boundary of said State Lease No. 18286 the following courses: North 59 degrees 30 minutes 40 seconds East 2,700.24 feet and South 32 degrees 01 minutes 05 seconds East 3,298.59 feet to its Southeast corner and the Northeast corner of State Lease No. 18289 having Coordinates of X = 1,266,279.21 and Y = 398,246.45; thence along the boundary of said State Lease No. 18289 the following courses: South 32 degrees 01 minutes 05 seconds East 1,869.50 feet, South 56 degrees 26 minutes 58 seconds West 2,478.91 feet, and North 34 degrees 24 minutes 21 seconds West 3,581.74 feet to its Northwest corner and the Southwest corner of said State Lease No. 18286 having Coordinates of X = 1,263,180.62 and Y = 398,246.45; thence North 34 degrees 24 minutes 21 seconds West 1,729.31 feet to the point of beginning, containing approximately **2,323.67 acres**, all as more particularly outlined on a plat on file in the Office of Mineral Resources, Department of Natural Resources. All bearings, distances and coordinates are based on Louisiana Coordinate System of 1927, (North or South Zone).

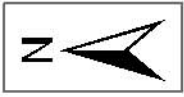
NOTE: The above description of the Tract nominated for lease has been provided and corrected, where required, exclusively by the nomination party. Any mineral lease selected from this Tract and awarded by the Louisiana State Mineral Board shall be without warranty of any kind, either express, implied, or statutory, including, but not limited to, the implied warranties of merchantability and fitness for a particular purpose. Should the mineral lease awarded by the Louisiana State Mineral Board be subsequently modified, cancelled or abrogated due to the

existence of conflicting leases, operating agreements, private claims or other future obligations or conditions which may affect all or any portion of the leased Tract, it shall not relieve the Lessee of the obligation to pay any bonus due thereon to the Louisiana State Mineral Board, nor shall the Louisiana State Mineral Board be obligated to refund any consideration paid by the Lessor prior to such modification, cancellation, or abrogation, including, but not limited to, bonuses, rentals and royalties.

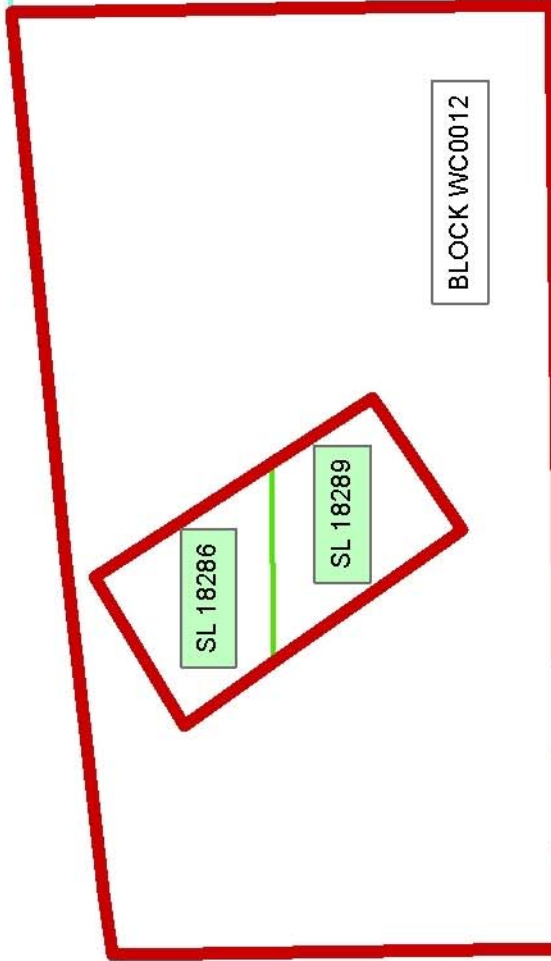
NOTE: The State of Louisiana does hereby reserve, and this lease shall be subject to, the imprescriptible right of surface use in the nature of a servitude in favor of the Department of Natural Resources, including its Offices and Commissions, for the sole purpose of implementing, constructing, servicing and maintaining approved coastal zone management and/or restoration projects. Utilization of any and all rights derived under this lease by the mineral lessee, its agents, successors or assigns, shall not interfere with nor hinder the reasonable surface use by the Department of Natural Resources, its Offices or Commissions, as herein above reserved.

Applicant: LAVERGNE OIL & GAS

Bidder	Cash Payment	Price/Acre	Rental	Oil	Gas	Other



CAMERON PARISH



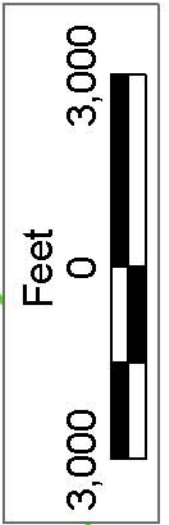
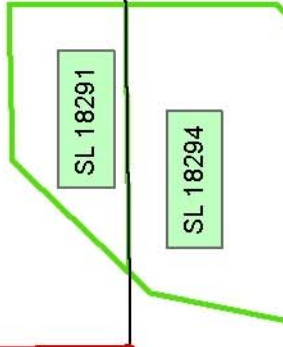
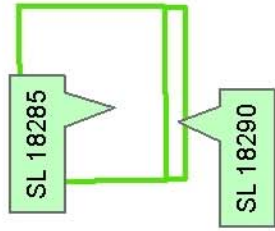
BLOCK WC0012

WEST CAMERON AREA, REVISED

BLOCK WC0019

P.O.B.  
X=1,258,629.28  
Y=393,790.24

SL 4418



**TRACT 37637 - Portion of Blocks 13, and 14, West Cameron Area, Revised, Cameron Parish, Louisiana**

The beds and bottoms of all water bodies belonging to the State of Louisiana located in Blocks 13, and 14, West Cameron Area, Revised, together with any present lands formed by accretion to the shoreline or islands formed therein, located in Cameron Parish, Louisiana, owned by and not presently under mineral lease as of August 10, 2005, from the State of Louisiana, the geographical area of which is more fully described as follows: Beginning at the Southeast corner of Block 13, West Cameron Area, Revised having Coordinates of X = 1,258,629.28 and Y = 393,790.24; thence West 14,758.05 feet on the South line of said Block 13 to its Southwest corner having Coordinates of X = 1,243,871.23 and Y = 393,790.24; thence North 1,121.97 feet on the West line of said Block 13 to the Southernmost Northeast corner of State Lease No. 18024, and a point on the East line of Block 14, West Cameron Area, Revised having Coordinates of X = 1,243,871.23 and Y = 394,912.21; thence along the boundary of said State Lease No. 18024 the following courses: West 1,799.71 feet, North 2,004.23 feet and North 39 degrees 34 minutes 36 seconds West 1,394.85 feet to its Northernmost Northeast corner having Coordinates of X = 1,241,182.85 and Y = 397,991.55; thence Northeasterly on a straight line to the Northwest corner of State Lease No. 14422 as amended, having Coordinates of X = 1,242,240.49 and Y = 398,165.24; thence along the boundary of said State Lease No. 14422 the following courses: South 09 degrees 19 minutes 34 seconds East 1,417.43 feet and North 80 degrees 40 minutes 26 seconds East 1,419.81 feet to its Southeast corner and a point on the West line of said Block 13 having Coordinates of X = 1,243,871.23 and Y = 396,996.63; thence North 1,442.13 feet on the boundary of said State Lease No. 14422 and the West line of said Block 13 to the Northwest corner of said Block 13 having Coordinates of X = 1,243,871.23 and Y = 398,438.76; thence Northeasterly on a straight line to a point having Coordinates of X = 1,248,971 and Y = 399,421; thence Northeasterly on a straight line to a point having Coordinates of X = 1,254,211 and Y = 400,226; thence Northeasterly on a straight line to the Northeast corner of said Block 13 having Coordinates of X = 1,258,629.28 and Y = 400,836.80; thence South 7,046.56 feet on the East line of said Block 13 to the point of beginning, **LESS AND EXCEPT** that portion of State Lease No. 14570, as amended that lies within the above described tract, more particularly described as follows: Beginning at the Northwest corner of said State Lease No. 14570 having Coordinates of X = 1,244,812.80 and Y = 398,468.76; thence along the boundary of said State Lease No. 14570 the following courses: North 79 degrees 16 minutes 32 seconds East 1,475.80 feet, South 10 degrees 43 minutes 28 seconds East 1,475.80 feet, South 79 degrees 16 minutes 32 seconds West 1,475.80 feet, and North 10 degrees 43 minutes 28 seconds West 1,475.80 feet to the point of beginning, containing approximately **2,063.07 acres**, all as more particularly outlined on a plat on file in the Office of Mineral Resources, Department of Natural Resources. All bearings, distances and coordinates are based on Louisiana Coordinate System of 1927, (North or South Zone).

NOTE: The above description of the Tract nominated for lease has been provided and corrected, where required, exclusively by the nomination party. Any mineral lease selected from this Tract and awarded by the Louisiana State Mineral Board shall be without warranty of any kind, either express, implied, or statutory, including, but not limited to, the implied warranties of merchantability and fitness for a particular purpose. Should the mineral lease awarded by the Louisiana State Mineral Board be subsequently modified, cancelled or abrogated due to the existence of conflicting leases, operating agreements, private claims or other future obligations or conditions which may affect all or any portion of the leased Tract, it shall not relieve the Lessee of the obligation to pay any bonus due thereon to the Louisiana State Mineral Board, nor shall the Louisiana State Mineral Board be obligated to refund any consideration paid by the Lessor prior to such modification, cancellation, or abrogation, including, but not limited to, bonuses, rentals and royalties.

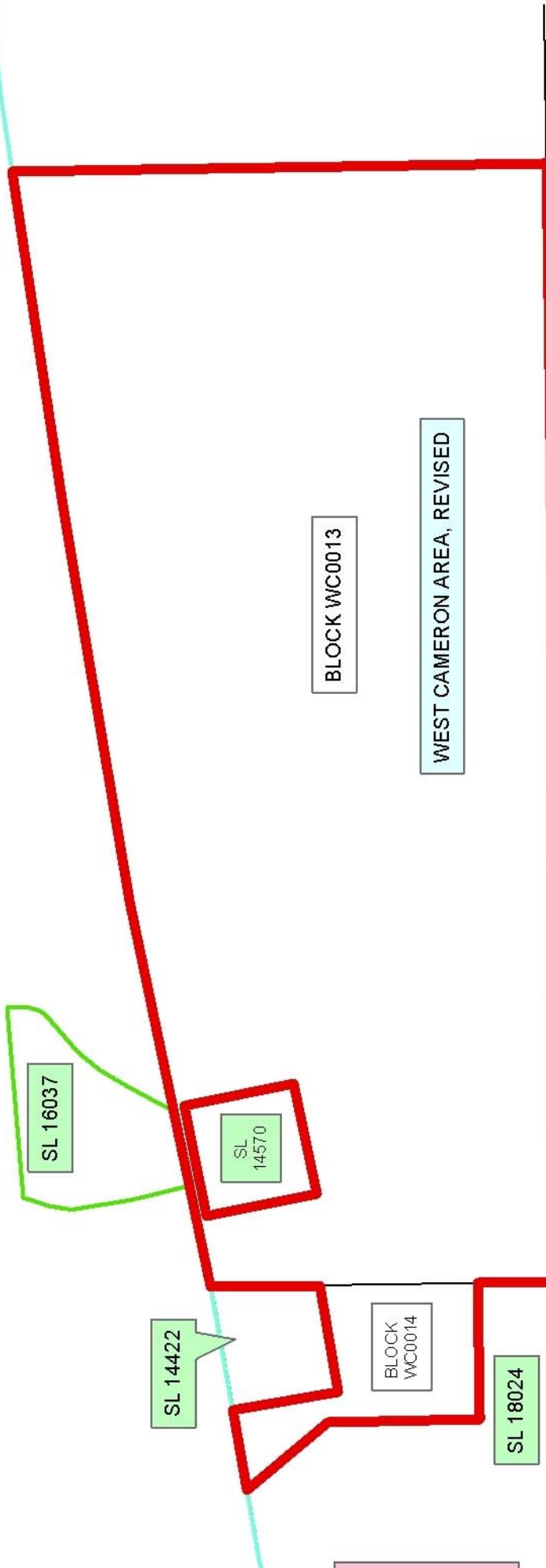
NOTE: The State of Louisiana does hereby reserve, and this lease shall be subject to, the imprescriptible right of surface use in the nature of a servitude in favor of the Department of Natural Resources, including its Offices and Commissions, for the sole purpose of implementing, constructing, servicing and maintaining approved coastal zone management and/or restoration projects. Utilization of any and all rights derived under this lease by the mineral lessee, its agents, successors or assigns, shall not interfere with nor hinder the reasonable surface use by the Department of Natural Resources, its Offices or Commissions, as herein above reserved.

Applicant: LAVERGNE OIL & GAS

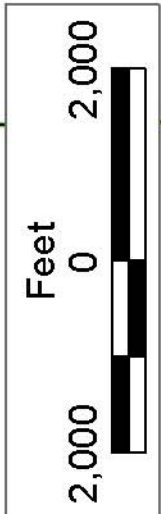
Bidder	Cash Payment	Price/Acre	Rental	Oil	Gas	Other



CAMERON PARISH



P.O.B.  
X=1,258,629.28  
Y=393,790.24



**TRACT 37638 - Portion of Block 55, Main Pass Area, Revised, Plaquemines Parish, Louisiana**

The beds and bottoms of all water bodies belonging to the State of Louisiana located in Block 55, Main Pass Area, Revised, together with any present lands formed by accretion to the shoreline or islands formed therein, located in Plaquemines Parish, Louisiana, owned by and not presently under mineral lease as of August 10, 2005, from the State of Louisiana, the geographical area of which is more fully described as follows: Beginning at the Southeast corner of Block 55, Main Pass Area, Revised having Coordinates of X = 2,709,100.00 and Y = 248,580.00; thence West 14,750.00 feet along the South line of said Block 55 to its Southwest corner having Coordinates of X = 2,694,350.00 and Y = 248,580.00; thence North 7,375.00 feet along the West line of said Block 55 to a point having Coordinates of X = 2,694,350.00 and Y = 255,955.00; thence East 12,327.36 feet to a point on the Three Mile Line having Coordinates of X = 2,706,677.36 and Y = 255,955.00; thence along an arc having a radius of 18,240.60 feet and a center at X = 2,689,305 and Y = 250,395 to a point having Coordinates of X = 2,707,507 and Y = 251,577; thence along an arc having a radius of 18,240.60 feet and a center at X = 2,700,735 and Y = 234,640 to a point on the East line of said Block 55 having Coordinates of X = 2,709,100.00 and Y = 250,849.48; thence South 2,269.48 feet to the point of beginning, containing approximately **2,292.06 acres, LESS AND EXCEPT** that portion thereof, if any, lying seaward of the line three nautical miles from the coast line of Louisiana, as said three mile line has been decreed by the Supreme Court of the United States, as determined by a Special Master appointed therein, in litigation styled **United States v. State of Louisiana et al No. 9 Original**, in 1975, all as more particularly outlined on a plat in the Office of Mineral Resources, Department of Natural Resources. All bearings, distances and coordinates are based on the Louisiana Coordinate System of 1927, (South Zone).

NOTE: The above description of the Tract nominated for lease has been provided and corrected, where required, exclusively by the nomination party. Any mineral lease selected from this Tract and awarded by the Louisiana State Mineral Board shall be without warranty of any kind, either express, implied, or statutory, including, but not limited to, the implied warranties of merchantability and fitness for a particular purpose. Should the mineral lease awarded by the Louisiana State Mineral Board be subsequently modified, cancelled or abrogated due to the existence of conflicting leases, operating agreements, private claims or other future obligations or conditions which may affect all or any portion of the leased Tract, it shall not relieve the Lessee of the obligation to pay any bonus due thereon to the Louisiana State Mineral Board, nor shall the Louisiana State Mineral Board be obligated to refund any consideration paid by the Lessor prior to such modification, cancellation, or abrogation, including, but not limited to, bonuses, rentals and royalties.

NOTE: The State of Louisiana does hereby reserve, and this lease shall be subject to, the imprescriptible right of surface use in the nature of a

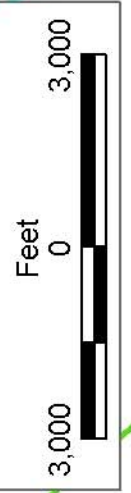
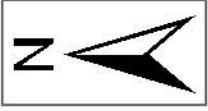
servitude in favor of the Department of Natural Resources, including its Offices and Commissions, for the sole purpose of implementing, constructing, servicing and maintaining approved coastal zone management and/or restoration projects. Utilization of any and all rights derived under this lease by the mineral lessee, its agents, successors or assigns, shall not interfere with nor hinder the reasonable surface use by the Department of Natural Resources, its Offices or Commissions, as herein above reserved.

NOTE: The Department of Wildlife and Fisheries has designated certain areas in the coastal waters of the State of Louisiana as Oyster Seed Bed Areas. The exact location of those Seed Bed Areas must be obtained from the Department of Wildlife and Fisheries and any work done under a mineral lease from the State of Louisiana may necessarily be conducted in conformity with the rules and regulations promulgated by the said Department of Wildlife and Fisheries for Oyster Seed Bed Areas.

Applicant: CYPRESS ENERGY CORPORATION

Bidder	Cash Payment	Price/Acre	Rental	Oil	Gas	Other





PLAQUEMINES PARISH

MAIN PASS AREA, REVISED

US

LA

BLOCK MP0055

BLOCK MP0054

BLOCK MP0056

BLOCK MP0066

BLOCK MP0065

BLOCK MP0084

P.O.B.  
X=2,709,100.00  
Y=248,580.00

SL 14680

SL 3851

**TRACT 37639 - Portion of Blocks 56, and 65, Main Pass Area, Revised, Plaquemines Parish, Louisiana**

The beds and bottoms of all water bodies belonging to the State of Louisiana located in Blocks 56, and 65, Main Pass Area, Revised, together with any present lands formed by accretion to the shoreline or islands formed therein, located in Plaquemines Parish, Louisiana, owned by and not presently under mineral lease as of August 10, 2005, from the State of Louisiana, the geographical area of which is more fully described as follows: Beginning at a point on the West line of State Lease No. 17814 and the South line of Block 65, Main Pass Area, Revised having Coordinates of X = 2,719,640.00 and Y = 233,830.00; thence West 3,489.02 feet along the South line of said Block 65 to the Eastern most corner of State Lease No. 3851, as amended having Coordinates of X = 2,716,150.98 and Y = 233,830.00; thence along the boundary of said State Lease No. 3851 the following: North 30 degrees 02 minutes 00 seconds West 3,715.60 feet, North 57 degrees 40 minutes 10 seconds West 2,379.38 feet, and North 39 degrees 16 minutes 50 seconds West 5,023.96 feet to its Northern most corner also being a point on the West line of said Block 65 having Coordinates of X = 2,709,100.00 and Y = 242,208.01; thence North 6,371.99 feet along the West line of said Block 65 to its Northwest corner also being the Southwest corner of Block 56, having Coordinates of X = 2,709,100.00 and Y = 248,580.00; thence continue North 2,269.48 feet along the West line of said Block 56 to an intersection with the 3 Mile Line having Coordinates of X = 2,709,100.00 and Y = 250,849.48; thence along an arc having a center at X = 2,700,735 and Y = 234,640 to a point having Coordinates of X = 2,717,908 and Y = 240,788; thence along an arc having a center at X = 2,701,500 and Y = 232,820 to a point having Coordinates of X = 2,719,022 and Y = 237,890; thence along an arc having a center at X = 2,707,635 and Y = 223,640 to the Northern most point of State Lease No. 17814 having Coordinates of X = 2,719,640.00 and Y = 237,373.48; thence South 3,543.48 feet along the West line of said State Lease 17814 to the point of beginning, containing approximately **2,167.59 acres, LESS AND EXCEPT** that portion thereof, if any, lying seaward of the line three nautical miles from the coast line of Louisiana, as said three mile line has been decreed by the Supreme Court of the United States, as determined by a Special Master appointed therein, in litigation styled **United States v. State of Louisiana et al No. 9 Original**, in 1975, all as more particularly outlined on a plat in the Office of Mineral Resources, Department of Natural Resources. All bearings, distances and coordinates are based on the Louisiana Coordinate System of 1927, (South Zone).

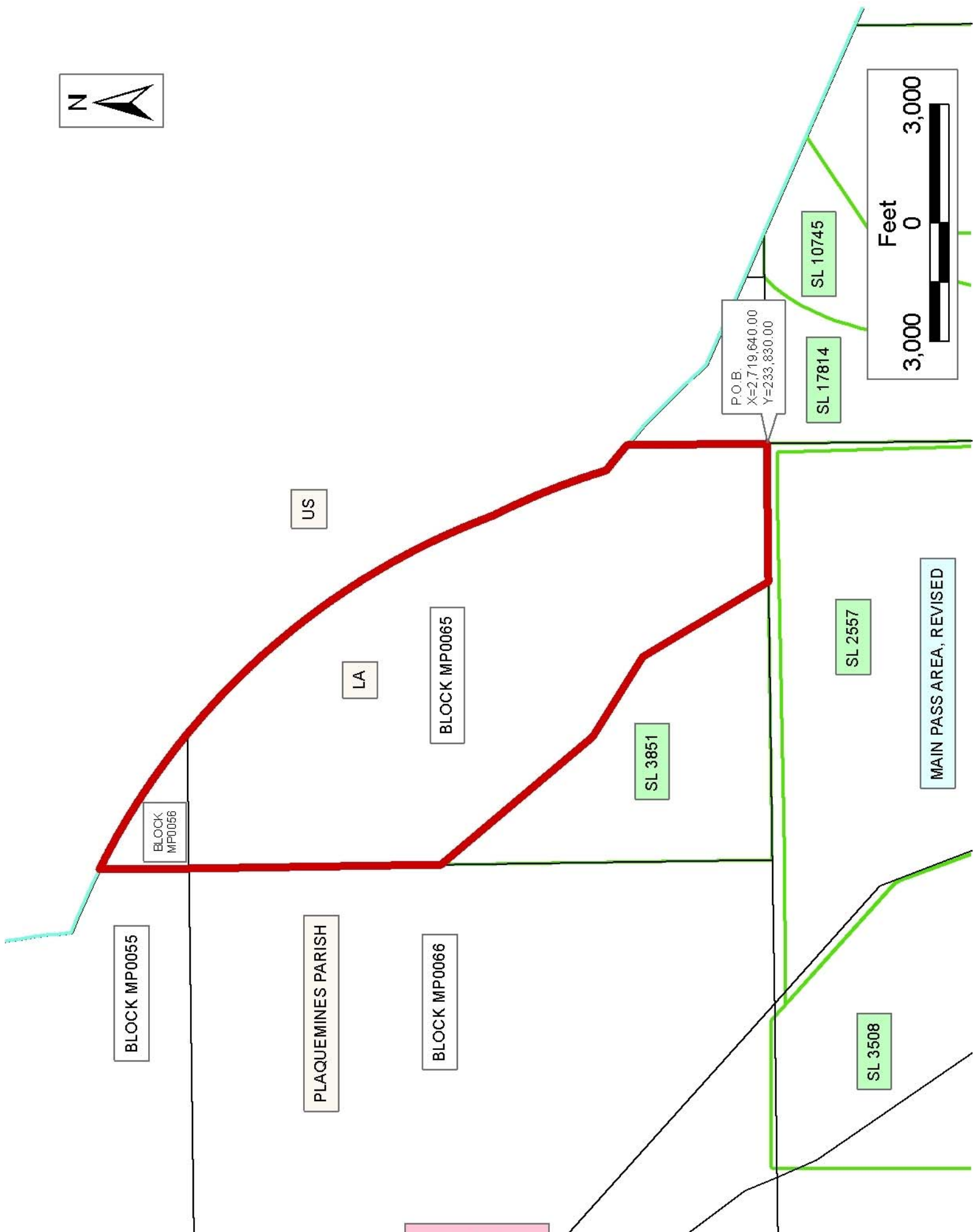
NOTE: The above description of the Tract nominated for lease has been provided and corrected, where required, exclusively by the nomination party. Any mineral lease selected from this Tract and awarded by the Louisiana State Mineral Board shall be without warranty of any kind, either express, implied, or statutory, including, but not limited to, the implied warranties of merchantability and fitness for a particular purpose. Should the mineral lease awarded by the Louisiana State Mineral Board be subsequently modified, cancelled or abrogated due to the

existence of conflicting leases, operating agreements, private claims or other future obligations or conditions which may affect all or any portion of the leased Tract, it shall not relieve the Lessee of the obligation to pay any bonus due thereon to the Louisiana State Mineral Board, nor shall the Louisiana State Mineral Board be obligated to refund any consideration paid by the Lessor prior to such modification, cancellation, or abrogation, including, but not limited to, bonuses, rentals and royalties.

NOTE: The State of Louisiana does hereby reserve, and this lease shall be subject to, the imprescriptible right of surface use in the nature of a servitude in favor of the Department of Natural Resources, including its Offices and Commissions, for the sole purpose of implementing, constructing, servicing and maintaining approved coastal zone management and/or restoration projects. Utilization of any and all rights derived under this lease by the mineral lessee, its agents, successors or assigns, shall not interfere with nor hinder the reasonable surface use by the Department of Natural Resources, its Offices or Commissions, as herein above reserved.

Applicant: CYPRESS ENERGY CORPORATION

Bidder	Cash Payment	Price/Acre	Rental	Oil	Gas	Other



**TRACT 37640 - Portion of Blocks 66, and 84, Main Pass Area, Revised, Plaquemines Parish, Louisiana**

The beds and bottoms of all water bodies belonging to the State of Louisiana located in Blocks 66, and 84, Main Pass Area, Revised, together with any present lands formed by accretion to the shoreline or islands formed therein, located in Plaquemines Parish, Louisiana, owned by and not presently under mineral lease as of August 10, 2005, from the State of Louisiana, the geographical area of which is more fully described as follows: Beginning at a point on the East line of Block 66, Main Pass Area, Revised having Coordinates of X = 2,709,100.00 and Y = 241,205.00; thence West 13,127.80 feet to a point within Block 84 having Coordinates of X = 2,695,972.20 and Y = 241,205.00; thence Northwesterly along a straight line to a point of intersection with the West line of said Block 66 or a projection thereof having Coordinates of X = 2,694,350.00 and Y = 243,441.02; thence North 5,138.98 feet along the West line of said Block 66 or a projection thereof to its Northwest corner having Coordinates of X = 2,694,350.00 and Y = 248,580.00; thence East 14,750.00 feet along the North line of said Block 66 to its Northeast corner having Coordinates of X = 2,709,100.00 and Y = 248,580.00; thence South 7,375.00 feet along the East line of said Block 66 to the point of beginning, containing approximately **2,455.64 acres**, all as more particularly outlined on a plat on file in the Office of Mineral Resources, Department of Natural Resources. All bearings, distances and coordinates are based on Louisiana Coordinate System of 1927, (North or South Zone).

NOTE: The above description of the Tract nominated for lease has been provided and corrected, where required, exclusively by the nomination party. Any mineral lease selected from this Tract and awarded by the Louisiana State Mineral Board shall be without warranty of any kind, either express, implied, or statutory, including, but not limited to, the implied warranties of merchantability and fitness for a particular purpose. Should the mineral lease awarded by the Louisiana State Mineral Board be subsequently modified, cancelled or abrogated due to the existence of conflicting leases, operating agreements, private claims or other future obligations or conditions which may affect all or any portion of the leased Tract, it shall not relieve the Lessee of the obligation to pay any bonus due thereon to the Louisiana State Mineral Board, nor shall the Louisiana State Mineral Board be obligated to refund any consideration paid by the Lessor prior to such modification, cancellation, or abrogation, including, but not limited to, bonuses, rentals and royalties.

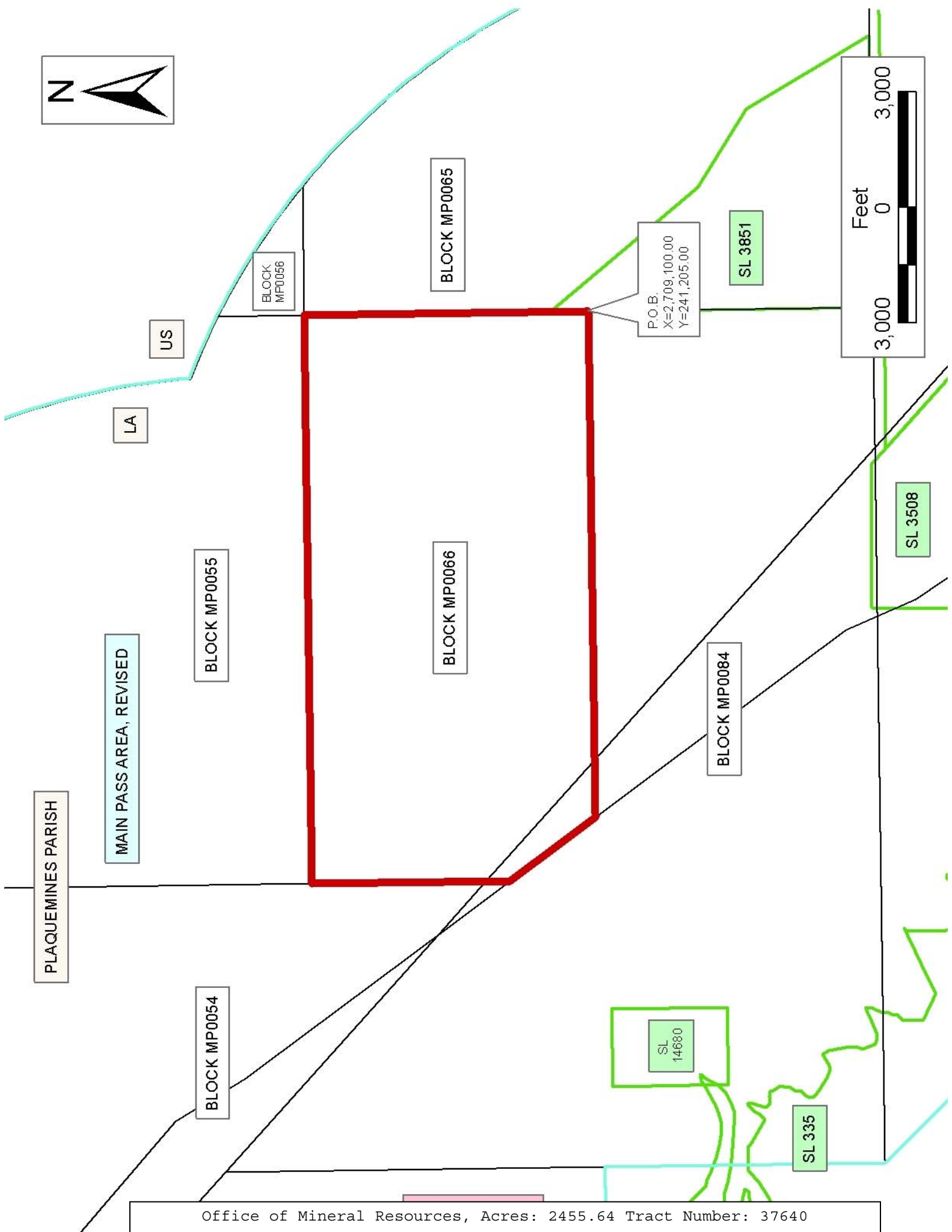
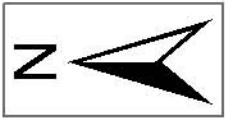
NOTE: The State of Louisiana does hereby reserve, and this lease shall be subject to, the imprescriptible right of surface use in the nature of a servitude in favor of the Department of Natural Resources, including its Offices and Commissions, for the sole purpose of implementing, constructing, servicing and maintaining approved coastal zone management and/or restoration projects. Utilization of any and all rights derived under this lease by the mineral lessee, its agents, successors or assigns, shall not interfere with nor hinder the reasonable surface use by the

Department of Natural Resources, its Offices or Commissions, as herein above reserved.

NOTE: The Department of Wildlife and Fisheries has designated certain areas in the coastal waters of the State of Louisiana as Oyster Seed Bed Areas. The exact location of those Seed Bed Areas must be obtained from the Department of Wildlife and Fisheries and any work done under a mineral lease from the State of Louisiana may necessarily be conducted in conformity with the rules and regulations promulgated by the said Department of Wildlife and Fisheries for Oyster Seed Bed Areas.

Applicant: CYPRESS ENERGY CORPORATION

Bidder	Cash Payment	Price/Acre	Rental	Oil	Gas	Other



**TRACT 37641 - Portion of Block 17, Eugene Island Area, Revised, St. Mary Parish, Louisiana**

The beds and bottoms of all water bodies belonging to the State of Louisiana located in Block 17, Eugene Island Area, Revised, together with any present lands formed by accretion to the shoreline or islands formed therein, located in St. Mary Parish, Louisiana, owned by and not presently under mineral lease as of August 10, 2005, from the State of Louisiana, the geographical area of which is more fully described as follows: Beginning at a point on the Atchafalaya Delta Wildlife Management Area boundary, said point also being on the East line of Block 17, Eugene Island Area, Revised, having Coordinates of X = 1,969,955.68 and Y = 250,124.15; thence South 1,979.44 feet along the East line of said Block 17 to a point having Coordinates of X = 1,969,955.68 and Y = 248,144.71; thence West 11,472.16 feet to the most Southerly Southeast corner of State Lease No. 16988 having Coordinates of X = 1,958,483.52 and Y = 248,144.71; thence along the boundary of said State Lease No. 16988 the following courses: North 550.00 feet to a point having Coordinates of X = 1,958,483.52 and Y = 248,694.71; East 3,461.08 feet to its most Easterly Southeast corner having Coordinates of X = 1,961,944.60 and Y = 248,694.71; and North 1,227.24 feet to a point, said point also being a point on the boundary of State Lease No. 7870, as amended, having Coordinates of X = 1,961,944.60 and Y = 249,921.95; thence along the boundary of said State Lease No. 7870 the following courses: North 41 degrees 23 minutes 30 seconds East 703.87 feet to a point having Coordinates of X = 1,962,410.00 and Y = 250,450.00; North 47 degrees 38 minutes 33 seconds East 460.11 feet to a point having Coordinates of X = 1,962,750.00 and Y = 250,760.00; North 51 degrees 20 minutes 25 seconds East 320.16 feet to a point having Coordinates of X = 1,963,000.00 and Y = 250,960.00; North 51 degrees 32 minutes 47 seconds East 434.17 feet to a point having Coordinates of X = 1,963,340.00 and Y = 251,230.00; North 55 degrees 07 minutes 29 seconds East 402.24 feet to a point having Coordinates of X = 1,963,670.00 and Y = 251,460.00; North 62 degrees 44 minutes 41 seconds East 371.21 feet to a point having Coordinates of X = 1,964,000.00 and Y = 251,630.00; and North 36 degrees 01 minutes 39 seconds East 565.98 feet to a point, said point also being a point on the Atchafalaya Delta Wildlife Management Area boundary having Coordinates of X = 1,964,332.90 and Y = 252,087.73; thence South 70 degrees 45 minutes 00 seconds East 5,955.78 feet along the boundary of said Atchafalaya Delta Wildlife Management Area to the point of beginning, containing approximately **583.95 acres**, all as more particularly outlined on a plat on file in the Office of Mineral Resources, Department of Natural Resources. All bearings, distances and coordinates are based on Louisiana Coordinate System of 1927, (North or South Zone).

NOTE: The above description of the Tract nominated for lease has been provided and corrected, where required, exclusively by the nomination party. Any mineral lease selected from this Tract and awarded by the Louisiana State Mineral Board shall be without warranty of any kind, either express, implied, or statutory, including, but not limited to, the



implied warranties of merchantability and fitness for a particular purpose. Should the mineral lease awarded by the Louisiana State Mineral Board be subsequently modified, cancelled or abrogated due to the existence of conflicting leases, operating agreements, private claims or other future obligations or conditions which may affect all or any portion of the leased Tract, it shall not relieve the Lessee of the obligation to pay any bonus due thereon to the Louisiana State Mineral Board, nor shall the Louisiana State Mineral Board be obligated to refund any consideration paid by the Lessor prior to such modification, cancellation, or abrogation, including, but not limited to, bonuses, rentals and royalties.

NOTE: The above described tract may be in the vicinity of existing shell reefs where drilling and dredging operations must be conducted in strict conformity with the regulations adopted by the Louisiana Department of Wildlife and Fisheries and/or the U.S. Corps of Engineers, U.S. Army.

NOTE: The State of Louisiana does hereby reserve, and this lease shall be subject to, the imprescriptible right of surface use in the nature of a servitude in favor of the Department of Natural Resources, including its Offices and Commissions, for the sole purpose of implementing, constructing, servicing and maintaining approved coastal zone management and/or restoration projects. Utilization of any and all rights derived under this lease by the mineral lessee, its agents, successors or assigns, shall not interfere with nor hinder the reasonable surface use by the Department of Natural Resources, its Offices or Commissions, as herein above reserved.

NOTE: The Department of Wildlife and Fisheries has designated certain areas in the coastal waters of the State of Louisiana as Oyster Seed Bed Areas. The exact location of those Seed Bed Areas must be obtained from the Department of Wildlife and Fisheries and any work done under a mineral lease from the State of Louisiana may necessarily be conducted in conformity with the rules and regulations promulgated by the said Department of Wildlife and Fisheries for Oyster Seed Bed Areas.

Applicant: ACADIAN LAND SERVICES, L.L.C.

Bidder	Cash Payment	Price/Acre	Rental	Oil	Gas	Other



ST MARY PARISH

BLOCK E10014

SL 7869

ATCHAFALAYA DELTA  
VMIA

SL 7868

SL 1666

BLOCK E10015

P.O.B.  
X=1,969,955.68  
Y=250,124.15

SL 7870

SL 16988

BLOCK E10016

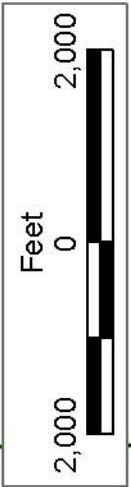
BLOCK E10017

EUGENE ISLAND AREA, REVISED

SL 17667

SL 14492

SL 18501



**TRACT 37642 - Portion of Blocks 66, and 84, Main Pass Area, Revised, Plaquemines Parish, Louisiana**

The beds and bottoms of all water bodies belonging to the State of Louisiana located in Blocks 66, and 84, Main Pass Area, Revised, together with any present lands formed by accretion to the shoreline or islands formed therein, located in Plaquemines Parish, Louisiana, owned by and not presently under mineral lease as of August 10, 2005, from the State of Louisiana, the geographical area of which is more fully described as follows: Beginning at the Southeast corner of Block 66, Main Pass Area, Revised having Coordinates of X = 2,709,100.00 and Y = 233,830.00; thence West 7,995.82 feet along the South line of said Block 66 and along the South line of Block 84 to a point on the coastline having Coordinates of X = 2,701,104.18 and Y = 233,830.00; thence Northwesterly along a straight line to a point having Coordinates of X = 2,700,735 and Y = 234,640; thence Northwesterly along a straight line to a point having Coordinates of X = 2,695,972.20 and Y = 241,205.00; thence East 13,127.80 feet to a point on the East line of said Block 66 having Coordinates of X = 2,709,100.00 and Y = 241,205.00; thence South 7,375.00 feet along the East line of said Block 66 to the point of beginning, **LESS AND EXCEPT** all those portions of State Lease No. 3508, as amended, that may lie within the above described tract, containing approximately **1,771.72 acres**, all as more particularly outlined on a plat on file in the Office of Mineral Resources, Department of Natural Resources. All bearings, distances and coordinates are based on Louisiana Coordinate System of 1927, (North or South Zone).

NOTE: The above description of the Tract nominated for lease has been provided and corrected, where required, exclusively by the nomination party. Any mineral lease selected from this Tract and awarded by the Louisiana State Mineral Board shall be without warranty of any kind, either express, implied, or statutory, including, but not limited to, the implied warranties of merchantability and fitness for a particular purpose. Should the mineral lease awarded by the Louisiana State Mineral Board be subsequently modified, cancelled or abrogated due to the existence of conflicting leases, operating agreements, private claims or other future obligations or conditions which may affect all or any portion of the leased Tract, it shall not relieve the Lessee of the obligation to pay any bonus due thereon to the Louisiana State Mineral Board, nor shall the Louisiana State Mineral Board be obligated to refund any consideration paid by the Lessor prior to such modification, cancellation, or abrogation, including, but not limited to, bonuses, rentals and royalties.

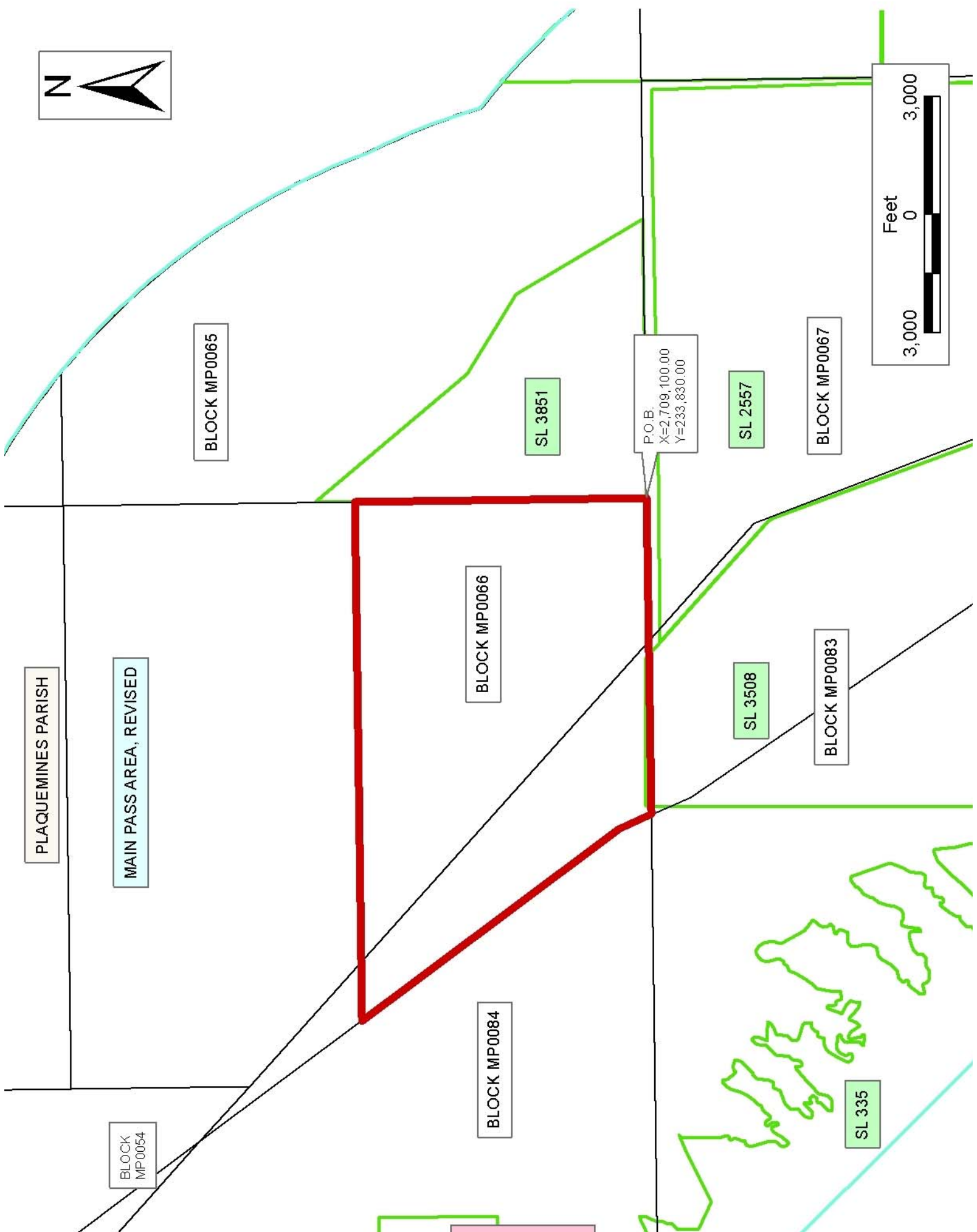
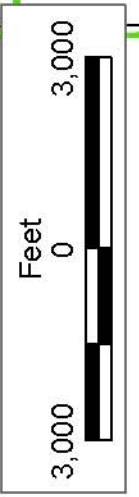
NOTE: The State of Louisiana does hereby reserve, and this lease shall be subject to, the imprescriptible right of surface use in the nature of a servitude in favor of the Department of Natural Resources, including its Offices and Commissions, for the sole purpose of implementing, constructing, servicing and maintaining approved coastal zone management and/or restoration projects. Utilization of any and all rights derived under this lease by the mineral lessee, its agents, successors or assigns,

shall not interfere with nor hinder the reasonable surface use by the Department of Natural Resources, its Offices or Commissions, as herein above reserved.

NOTE: The Department of Wildlife and Fisheries has designated certain areas in the coastal waters of the State of Louisiana as Oyster Seed Bed Areas. The exact location of those Seed Bed Areas must be obtained from the Department of Wildlife and Fisheries and any work done under a mineral lease from the State of Louisiana may necessarily be conducted in conformity with the rules and regulations promulgated by the said Department of Wildlife and Fisheries for Oyster Seed Bed Areas.

Applicant: CYPRESS ENERGY CORPORATION

Bidder	Cash Payment	Price/Acre	Rental	Oil	Gas	Other



PLAQUEMINES PARISH

MAIN PASS AREA, REVISED

BLOCK MP0065

SL 3851

P.O.B.  
X=2,709,100.00  
Y=233,830.00

SL 2557

BLOCK MP0067

BLOCK MP0066

SL 3508

BLOCK MP0083

BLOCK MP0054

BLOCK MP0084

SL 335

**TRACT 37643 - Portion of Block 16, Eugene Island Area, Revised, St. Mary Parish, Louisiana**

The beds and bottoms of all water bodies belonging to the State of Louisiana located in Block 16, Eugene Island Area, Revised, together with any present lands formed by accretion to the shoreline or islands formed therein, located in St. Mary Parish, Louisiana, owned by and not presently under mineral lease as of August 10, 2005, from the State of Louisiana, the geographical area of which is more fully described as follows: Beginning at a point on the Atchafalaya Delta Wildlife Management Area boundary, said point also being on the West line of Block 16, Eugene Island Area, Revised, having Coordinates of X = 1,969,955.68 and Y = 250,124.15; thence South 70 degrees 45 minutes 00 seconds East 7,955.91 feet along said Atchafalaya Delta Wildlife Management Area boundary to a point having Coordinates of X = 1,977,466.76 and Y = 247,501.15; thence South 6,605.73 feet to a point on the South line of said Block 16 having Coordinates of X = 1,977,466.76 and Y = 240,895.42; thence West 2,511.08 feet along the South line of said Block 16 to the Southwest corner of State Lease No. 17667, having Coordinates of X = 1,974,955.68 and Y = 240,895.42; thence along the boundary of said State Lease No. 17667 the following courses: North 6,000.00 feet to a point having Coordinates of X = 1,974,955.68 and Y = 246,895.42 and West 5,000.00 feet to its Northwest corner, said corner also being on the West line of said Block 16, having Coordinates of X = 1,969,955.68 and Y = 246,895.42; thence North 3,228.73 feet along the West line of said Block 16 to the point of beginning, containing approximately **676.47 acres**, all as more particularly outlined on a plat on file in the Office of Mineral Resources, Department of Natural Resources. All bearings, distances and coordinates are based on Louisiana Coordinate System of 1927, (North or South Zone).

NOTE: The above description of the Tract nominated for lease has been provided and corrected, where required, exclusively by the nomination party. Any mineral lease selected from this Tract and awarded by the Louisiana State Mineral Board shall be without warranty of any kind, either express, implied, or statutory, including, but not limited to, the implied warranties of merchantability and fitness for a particular purpose. Should the mineral lease awarded by the Louisiana State Mineral Board be subsequently modified, cancelled or abrogated due to the existence of conflicting leases, operating agreements, private claims or other future obligations or conditions which may affect all or any portion of the leased Tract, it shall not relieve the Lessee of the obligation to pay any bonus due thereon to the Louisiana State Mineral Board, nor shall the Louisiana State Mineral Board be obligated to refund any consideration paid by the Lessor prior to such modification, cancellation, or abrogation, including, but not limited to, bonuses, rentals and royalties.

NOTE: The above described tract may be in the vicinity of existing shell reefs where drilling and dredging operations must be conducted in strict conformity with the regulations adopted by the Louisiana Department of Wildlife and Fisheries and/or the U.S. Corps of Engineers, U.S. Army.

NOTE: The State of Louisiana does hereby reserve, and this lease shall be subject to, the imprescriptible right of surface use in the nature of a servitude in favor of the Department of Natural Resources, including its Offices and Commissions, for the sole purpose of implementing, constructing, servicing and maintaining approved coastal zone management and/or restoration projects. Utilization of any and all rights derived under this lease by the mineral lessee, its agents, successors or assigns, shall not interfere with nor hinder the reasonable surface use by the Department of Natural Resources, its Offices or Commissions, as herein above reserved.

NOTE: It appears, according to our records, that a portion of this Tract is located within the restrictive safety fairway area as set out by the Corps of Engineers, U.S. Army and/or the restrictive anchorage area as set out by the U.S. Coast Guard.

NOTE: The Department of Wildlife and Fisheries has designated certain areas in the coastal waters of the State of Louisiana as Oyster Seed Bed Areas. The exact location of those Seed Bed Areas must be obtained from the Department of Wildlife and Fisheries and any work done under a mineral lease from the State of Louisiana may necessarily be conducted in conformity with the rules and regulations promulgated by the said Department of Wildlife and Fisheries for Oyster Seed Bed Areas.

Applicant: ACADIAN LAND SERVICES, L.L.C.

Bidder	Cash Payment	Price/Acre	Rental	Oil	Gas	Other



BLOCK EI0015

ATCHAFALAYA DELTA  
WMA

ST MARY PARISH

EUGENE ISLAND AREA, REVISED

BLOCK EI0016

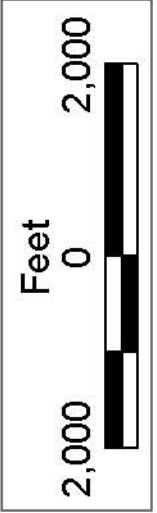
P.O.B.  
X=1,969,955.68  
Y=250,124.15

BLOCK EI0017

SL 17667

BLOCK EI0035

BLOCK EI0034





**TRACT 37644 - Portion of Blocks 18, and 33, Eugene Island Area, Revised, St. Mary Parish, Louisiana**

The beds and bottoms of all water bodies belonging to the State of Louisiana located in Blocks 18, and 33, Eugene Island Area, Revised, together with any present lands formed by accretion to the shoreline or islands formed therein, located in St. Mary Parish, Louisiana, owned by and not presently under mineral lease as of August 10, 2005, from the State of Louisiana, the geographical area of which is more fully described as follows: Beginning at the Southwest corner of State Lease No. 1667, as amended, said corner also being a point on the west line of Block 18, Eugene Island Area, Revised, having Coordinates of X = 1,939,911.36 and Y = 247,079.31; thence along the boundary of said State Lease No. 1667, as amended, the following courses: East 7,511.08 feet to a point having Coordinates of X = 1,947,422.44 and Y = 247,079.31 and North 1,316.11 feet the most Westerly Southwest corner of State Lease No. 1536, as amended, having Coordinates of X = 1,947,422.44 and Y = 248,395.42; thence along the boundary of said State Lease No. 1536, as amended, the following courses: East 741.08 feet to a point having Coordinates of X = 1,948,163.52 and Y = 248,395.42, South 2,246.75 feet to a point having Coordinates of X = 1,948,163.52 and Y = 246,148.67; North 67 degrees 53 minutes 47 seconds East 481.90 feet to a point having Coordinates of X = 1,948,610.00 and Y = 246,330.00; South 67 degrees 45 minutes 04 seconds East 237.70 feet to a point having Coordinates of X = 1,948,830.00 and Y = 246,239.99; and North 87 degrees 03 minutes 52 seconds East 406.75 feet to the most Westerly Northwest corner of State Lease No. 17121, having Coordinates of X = 1,949,236.22 and Y = 246,260.83; thence South 26 degrees 40 minutes 51 seconds East 3,438.11 feet along the West line of said State Lease No. 17121 to the Southwest corner of State Lease No. 14354 having Coordinates of X = 1,950,780.00 and Y = 243,188.80; thence East 4,153.52 feet along the South line of said State Lease No. 14354 to its Southeast corner, said corner also being a point on the East line of said Block 18, having Coordinates of X = 1,954,933.52 and Y = 243,188.80; thence South 2,293.38 feet along the East line of said Block 18 to the Southeast corner of said Block 18, said point also being the Northeast corner of Block 33, Eugene Island Area, Revised, having Coordinates of X = 1,954,933.52 and Y = 240,895.42; thence South 2,039.69 feet along the East line of said Block 33 to a point on the Three Mile Decree line derived from the June 19, 1975 Decree in the United States vs. Louisiana No. 9 Original, having Coordinates of X = 1,954,933.52 and Y = 238,855.73; thence along the boundary line of said Three Mile Decree line the following courses: Northwesterly along a straight line to a point on the West line of said Block 18, having Coordinates of X = 1,939,911.36 and Y = 245,426.62; thence North 1,652.69 feet along the West line of said Block 18, to the point of beginning, containing approximately **1,250.60 acres, LESS AND EXCEPT** that portion thereof, if any, lying seaward of the line three nautical miles from the coast line of Louisiana, as said three mile line has been decreed by the Supreme Court of the United States, as determined by a Special Master appointed therein, in litigation styled **United States v. State of Louisiana et al No. 9 Original**, in 1975, all as

more particularly outlined on a plat in the Office of Mineral Resources, Department of Natural Resources. All bearings, distances and coordinates are based on the Louisiana Coordinate System of 1927, (South Zone).

NOTE: The above description of the Tract nominated for lease has been provided and corrected, where required, exclusively by the nomination party. Any mineral lease selected from this Tract and awarded by the Louisiana State Mineral Board shall be without warranty of any kind, either express, implied, or statutory, including, but not limited to, the implied warranties of merchantability and fitness for a particular purpose. Should the mineral lease awarded by the Louisiana State Mineral Board be subsequently modified, cancelled or abrogated due to the existence of conflicting leases, operating agreements, private claims or other future obligations or conditions which may affect all or any portion of the leased Tract, it shall not relieve the Lessee of the obligation to pay any bonus due thereon to the Louisiana State Mineral Board, nor shall the Louisiana State Mineral Board be obligated to refund any consideration paid by the Lessor prior to such modification, cancellation, or abrogation, including, but not limited to, bonuses, rentals and royalties.

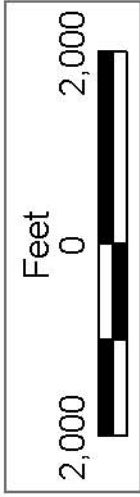
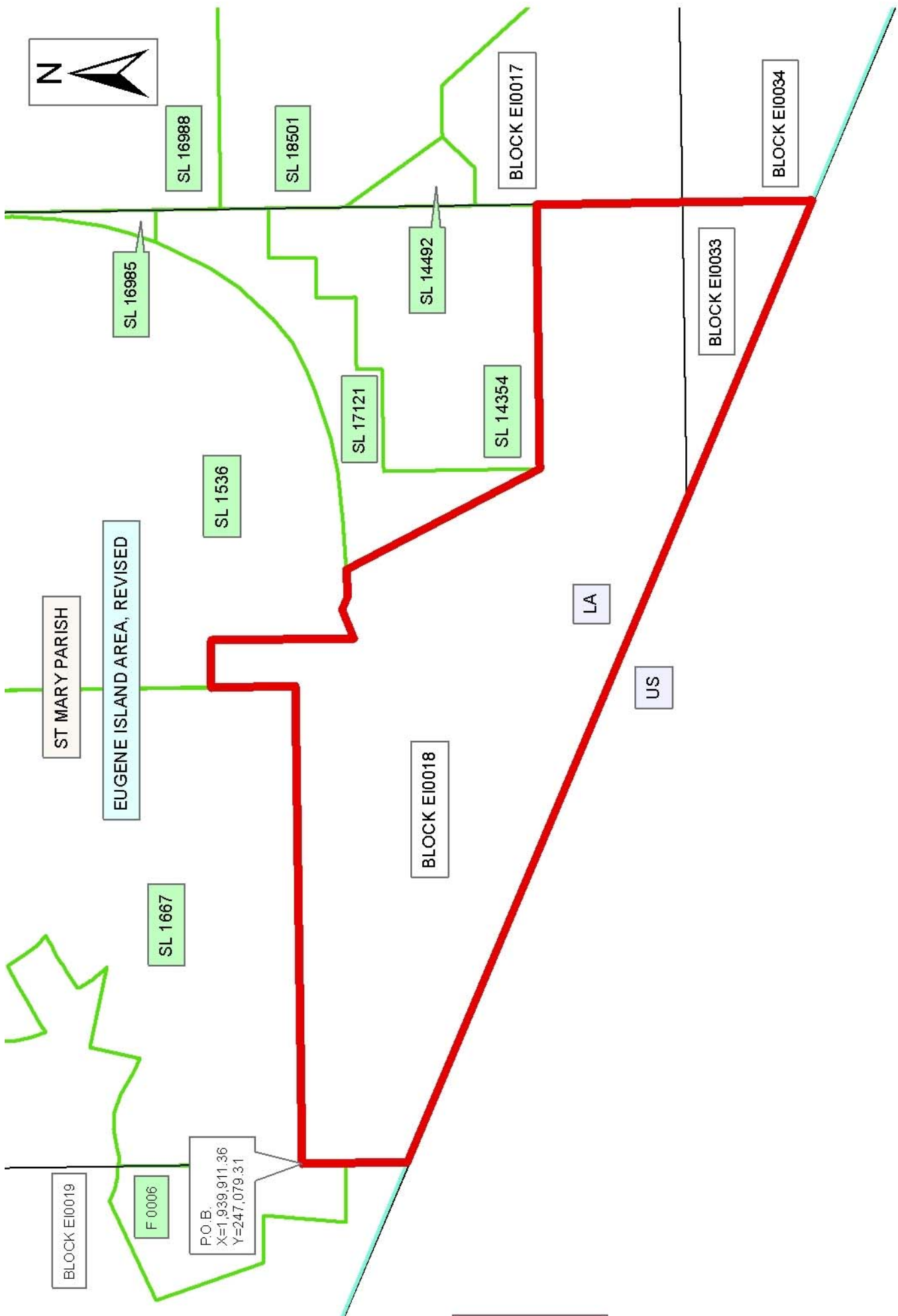
NOTE: The above described tract may be in the vicinity of existing shell reefs where drilling and dredging operations must be conducted in strict conformity with the regulations adopted by the Louisiana Department of Wildlife and Fisheries and/or the U.S. Corps of Engineers, U.S. Army.

NOTE: The State of Louisiana does hereby reserve, and this lease shall be subject to, the imprescriptible right of surface use in the nature of a servitude in favor of the Department of Natural Resources, including its Offices and Commissions, for the sole purpose of implementing, constructing, servicing and maintaining approved coastal zone management and/or restoration projects. Utilization of any and all rights derived under this lease by the mineral lessee, its agents, successors or assigns, shall not interfere with nor hinder the reasonable surface use by the Department of Natural Resources, its Offices or Commissions, as herein above reserved.

NOTE: The Department of Wildlife and Fisheries has designated certain areas in the coastal waters of the State of Louisiana as Oyster Seed Bed Areas. The exact location of those Seed Bed Areas must be obtained from the Department of Wildlife and Fisheries and any work done under a mineral lease from the State of Louisiana may necessarily be conducted in conformity with the rules and regulations promulgated by the said Department of Wildlife and Fisheries for Oyster Seed Bed Areas.

Applicant: ACADIAN LAND SERVICES, L.L.C.

Bidder	Cash Payment	Price/Acre	Rental	Oil	Gas	Other



**TRACT 37645 - Portion of Block 17, Eugene Island Area, Revised, St. Mary Parish, Louisiana**

The beds and bottoms of all water bodies belonging to the State of Louisiana located in Block 17, Eugene Island Area, Revised, together with any present lands formed by accretion to the shoreline or islands formed therein, located in St. Mary Parish, Louisiana, owned by and not presently under mineral lease as of August 10, 2005, from the State of Louisiana, the geographical area of which is more fully described as follows: Beginning at the Southeast corner of Block 17, Eugene Island Area, Revised, having Coordinates of X = 1,969,955.68 and Y = 240,895.42; thence West 5,722.16 feet along the South line of said Block 17 to the Southeast corner of State Lease No. 18501 having Coordinates of X = 1,964,233.52 and Y = 240,895.42; thence along the boundary of said State Lease No. 18501 the following courses: North 1,900.00 feet to a point having Coordinates of X = 1,964,233.52 and Y = 242,795.42 and North 46 degrees 18 minutes 42 seconds West 7,744.35 feet to its Northeast corner having Coordinates of X = 1,958,633.52 and Y = 248,144.71; thence East 11,322.16 feet to a point on the East line of said Block 17 having Coordinates of X = 1,969,955.68 and Y = 248,144.71; thence South 7,249.29 feet along the East line of said Block 17 to the point of beginning, containing approximately **1,296.13 acres**, all as more particularly outlined on a plat on file in the Office of Mineral Resources, Department of Natural Resources. All bearings, distances and coordinates are based on Louisiana Coordinate System of 1927, (North or South Zone).

NOTE: The above description of the Tract nominated for lease has been provided and corrected, where required, exclusively by the nomination party. Any mineral lease selected from this Tract and awarded by the Louisiana State Mineral Board shall be without warranty of any kind, either express, implied, or statutory, including, but not limited to, the implied warranties of merchantability and fitness for a particular purpose. Should the mineral lease awarded by the Louisiana State Mineral Board be subsequently modified, cancelled or abrogated due to the existence of conflicting leases, operating agreements, private claims or other future obligations or conditions which may affect all or any portion of the leased Tract, it shall not relieve the Lessee of the obligation to pay any bonus due thereon to the Louisiana State Mineral Board, nor shall the Louisiana State Mineral Board be obligated to refund any consideration paid by the Lessor prior to such modification, cancellation, or abrogation, including, but not limited to, bonuses, rentals and royalties.

NOTE: The above described tract may be in the vicinity of existing shell reefs where drilling and dredging operations must be conducted in strict conformity with the regulations adopted by the Louisiana Department of Wildlife and Fisheries and/or the U.S. Corps of Engineers, U.S. Army.

NOTE: The State of Louisiana does hereby reserve, and this lease shall be subject to, the imprescriptible right of surface use in the nature of a servitude in favor of the Department of Natural Resources, including its

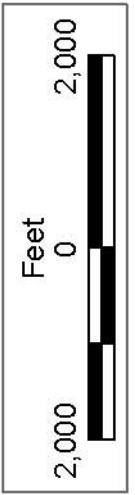
Offices and Commissions, for the sole purpose of implementing, constructing, servicing and maintaining approved coastal zone management and/or restoration projects. Utilization of any and all rights derived under this lease by the mineral lessee, its agents, successors or assigns, shall not interfere with nor hinder the reasonable surface use by the Department of Natural Resources, its Offices or Commissions, as herein above reserved.

NOTE: It appears, according to our records, that a portion of this Tract is located within the restrictive safety fairway area as set out by the Corps of Engineers, U.S. Army and/or the restrictive anchorage area as set out by the U.S. Coast Guard.

NOTE: The Department of Wildlife and Fisheries has designated certain areas in the coastal waters of the State of Louisiana as Oyster Seed Bed Areas. The exact location of those Seed Bed Areas must be obtained from the Department of Wildlife and Fisheries and any work done under a mineral lease from the State of Louisiana may necessarily be conducted in conformity with the rules and regulations promulgated by the said Department of Wildlife and Fisheries for Oyster Seed Bed Areas.

Applicant: ACADIAN LAND SERVICES, L.L.C.

Bidder	Cash Payment	Price/Acre	Rental	Oil	Gas	Other



P.O.B.  
X=1,969,955.68  
Y=240,895.42

BLOCK EI0016

SL 17667

BLOCK EI0035

EUGENE ISLAND AREA, REVISED

ST MARY PARISH

BLOCK EI0017

BLOCK EI0034

SL 7870

SL 16988

SL 18501

LA

US