

TRACT 36552 - Portion of Block 48, Breton Sound Area, Plaquemines Parish, Louisiana

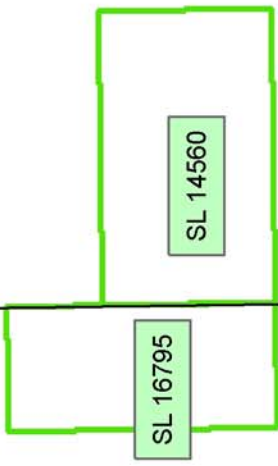
All of the lands now or formerly constituting the beds and bottoms of all water bodies of every nature and description the title of which vests in the State of Louisiana, together with all islands arising therein and other lands formed by accretion or by reliction, where allowed by law, excepting tax adjudicated lands, and not presently under mineral lease on August 11, 2004, situated in Plaquemines Parish, Louisiana, and more particularly described as follows: Beginning at a point having Coordinates of X = 2,635,350.00 and Y = 307,580.00, said point being the Northwest corner of Block 48, Breton Sound Area; thence East 12,860.00 feet on and along the North line of said Block 48, to a point having Coordinates of X = 2,648,210.00 and Y = 307,580.00, said point being the Northwest corner of State Lease No. 18080; thence on and along the Western and Southern boundaries of said State Lease No. 18080 the following courses and distances, to wit: South 1,780.00 feet to a point having Coordinates of X = 2,648,210.00 and Y = 305,800.00, said point being the Southwest corner of said State Lease No. 18080; and East 1,890.00 feet to a point having Coordinates of X = 2,650,100.00 and Y = 305,800.00, said point being the Southeast corner of said State Lease No. 18080, said point also being on the East line of said Block 48; thence South 5,595.00 feet on and along said East line of said Block 48, to a point having Coordinates of X = 2,650,100.00 and Y = 300,205.00; thence West 14,750.00 feet to a point having Coordinates of X = 2,635,350.00 and Y = 300,205.00, said point being on the West line of said Block 48; thence North 7,375.00 feet on and along said West line of said Block 48, to the point of beginning, containing approximately **2,420.04 acres**, all as more particularly outlined on a plat on file in the Office of Mineral Resources, Department of Natural Resources. All bearings, distances and coordinates are based on Louisiana Coordinate System of 1927, (North or South Zone), where applicable.

NOTE: The above description of the Tract nominated for lease has been provided and corrected, where required, exclusively by the nomination party. Any mineral lease selected from this Tract and awarded by the Louisiana State Mineral Board shall be without warranty of any kind, either express, implied, or statutory, including, but not limited to, the implied warranties of merchantability and fitness for a particular purpose. Should the mineral lease awarded by the Louisiana State Mineral Board be subsequently modified, cancelled or abrogated due to the existence of conflicting leases, operating agreements, private claims or other future obligations or conditions which may affect all or any portion of the leased Tract, it shall not relieve the Lessee of the obligation to pay any bonus due thereon to the Louisiana State Mineral Board, nor shall the Louisiana State Mineral Board be obligated to refund any consideration paid by the Lessor prior to such modification, cancellation, or abrogation, including, but not limited to, bonuses, rentals and royalties.

NOTE: The State of Louisiana does hereby reserve, and this lease shall be subject to, the imprescriptible right of surface use in the nature of a servitude in favor of the Department of Natural Resources, including its Offices and Commissions, for the sole purpose of implementing, constructing, servicing and maintaining approved coastal zone management and/or restoration projects. Utilization of any and all rights derived under this lease by the mineral lessee, its agents, successors or assigns, shall not interfere with nor hinder the reasonable surface use by the Department of Natural Resources, its Offices or Commissions, as herein above reserved.

Applicant: Robert A. Schroeder, Inc.

Bidder	Cash Payment	Price/Acre	Rental	Oil	Gas	Other



SL 14560

SL 16795

SL 18080

BLOCK BS0033

PLAQUEMINES PARISH

BLOCK BS0048

BRETON SOUND AREA

P.O.B.
X=2,635,350.00
Y=307,580.00

SL 12002



TRACT 36553 - Iberia Parish, Louisiana

All of the lands now or formerly constituting the beds and bottoms of all water bodies of every nature and description the title of which vests in the State of Louisiana, together with all islands arising therein and other lands formed by accretion or by reliction, where allowed by law, excepting tax adjudicated lands, and not presently under mineral lease on August 11, 2004, situated in Iberia Parish, Louisiana, and more particularly described as follows: Beginning at a point having Coordinates of X = 1,901,960.00 and Y = 309,620.00; thence South 48 degrees 30 minutes 00 seconds West 9,000.00 feet to a point having Coordinates of X = 1,895,219.40 and Y = 303,656.42; thence North 45 degrees 30 minutes 00 seconds West 5,000.00 feet to a point having Coordinates of X = 1,891,653.15 and Y = 307,160.97; thence North 48 degrees 30 minutes 00 seconds East 9,000.00 feet to a point having Coordinates of X = 1,898,393.75 and Y = 313,124.55; thence South 45 degrees 30 minutes 00 seconds East 5,000.00 feet to the point of beginning, containing **1,030.54 acres**, all as more particularly outlined on a plat on file in the Office of Mineral Resources, Department of Natural Resources. All bearings, distances and coordinates are based on Louisiana Coordinate System of 1927, (North or South Zone), where applicable.

NOTE: The above description of the Tract nominated for lease has been provided and corrected, where required, exclusively by the nomination party. Any mineral lease selected from this Tract and awarded by the Louisiana State Mineral Board shall be without warranty of any kind, either express, implied, or statutory, including, but not limited to, the implied warranties of merchantability and fitness for a particular purpose. Should the mineral lease awarded by the Louisiana State Mineral Board be subsequently modified, cancelled or abrogated due to the existence of conflicting leases, operating agreements, private claims or other future obligations or conditions which may affect all or any portion of the leased Tract, it shall not relieve the Lessee of the obligation to pay any bonus due thereon to the Louisiana State Mineral Board, nor shall the Louisiana State Mineral Board be obligated to refund any consideration paid by the Lessor prior to such modification, cancellation, or abrogation, including, but not limited to, bonuses, rentals and royalties.

NOTE: The above described tract may be in the vicinity of existing shell reefs where drilling and dredging operations must be conducted in strict conformity with the regulations adopted by the Louisiana Department of Wildlife and Fisheries and/or the U.S. Corps of Engineers, U.S. Army.

NOTE: The State of Louisiana does hereby reserve, and this lease shall be subject to, the imprescriptible right of surface use in the nature of a servitude in favor of the Department of Natural Resources, including its Offices and Commissions, for the sole purpose of implementing, constructing, servicing and maintaining approved coastal zone management and/or restoration projects. Utilization of any and all rights derived under this lease by the mineral lessee, its agents, successors or assigns,

shall not interfere with nor hinder the reasonable surface use by the Department of Natural Resources, its Offices or Commissions, as herein above reserved.

NOTE: The Department of Wildlife and Fisheries has designated certain areas in the coastal waters of the State of Louisiana as Oyster Seed Bed Areas. The exact location of those Seed Bed Areas must be obtained from the Department of Wildlife and Fisheries and any work done under a mineral lease from the State of Louisiana may necessarily be conducted in conformity with the rules and regulations promulgated by the said Department of Wildlife and Fisheries for Oyster Seed Bed Areas.

Applicant: Rockland Oil Company

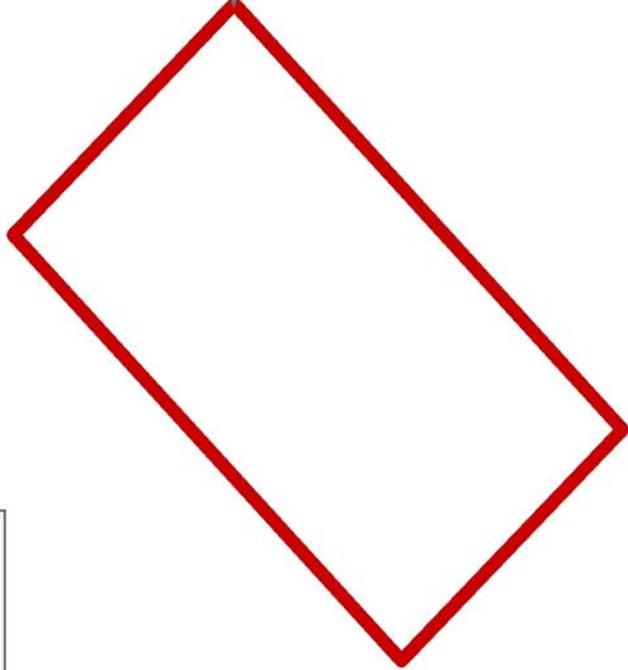
Bidder	Cash Payment	Price/Acre	Rental	Oil	Gas	Other



EAST COTE BLANCHE BAY

IBERIA PARISH

P.O.B.
X=1,901,960.00
Y=309,620.00



SL 17284



TRACT 36554 - Portion of Block 48, Breton Sound Area, Plaquemines Parish, Louisiana

All of the lands now or formerly constituting the beds and bottoms of all water bodies of every nature and description the title of which vests in the State of Louisiana, together with all islands arising therein and other lands formed by accretion or by reliction, where allowed by law, excepting tax adjudicated lands, and not presently under mineral lease on August 11, 2004, situated in Plaquemines Parish, Louisiana, and more particularly described as follows: Beginning at a point having Coordinates of X = 2,635,350.00 and Y = 292,830.00, said point being the Southwest corner of Block 48, Breton Sound Area; thence North 7,375.00 feet on and along the West line of said Block 48, to a point having Coordinates of X = 2,635,350.00 and Y = 300,205.00; thence East 14,750.00 feet to a point having Coordinates of X = 2,650,100.00 and Y = 300,205.00, said point being on the East line of said Block 48; thence South 7,375.00 feet on and along said East line of said Block 48, to a point having Coordinates of X = 2,650,100.00 and Y = 292,830.00, said point being the Southeast corner of said Block 48; thence West 7,419.00 feet on and along the South line of said Block 48, to a point having Coordinates of X = 2,642,681.00 and Y = 292,830.00, said point being the Southeast corner of State Lease No. 17296; thence on and along the Eastern, Northern and Western boundaries of said State Lease No. 17296 the following courses and distances, to wit: North 1,080.00 feet to a point having Coordinates of X = 2,642,681.00 and Y = 293,910.00, said point being the Northeast corner of said State Lease No. 17296; West 3,525.00 feet to a point having Coordinates of X = 2,639,156.00 and Y = 293,910.00, said point being the Northwest corner of said State Lease No. 17296; and South 1,080.00 feet to a point having Coordinates of X = 2,639,156.00 and Y = 292,830.00, said point being the Southwest corner of said State Lease No. 17296, said point also being on said South line of said Block 48; thence West 520.00 feet on and along said South line of said Block 48, to a point having Coordinates of X = 2,638,636.00 and Y = 292,830.00, said point being the Southeast corner of State Lease No. 17295; thence on and along the Eastern, Northern and Western boundaries of said State Lease No. 17295 the following courses and distances, to wit: North 1,822.00 feet to a point having Coordinates of X = 2,638,636.00 and Y = 294,652.00, said point being the Northeast corner of said State Lease No. 17295; West 2,485.00 feet to a point having Coordinates of X = 2,636,151.00 and Y = 294,652.00, said point being the Northwest corner of said State Lease No. 17295; and South 1,822.00 feet to a point having Coordinates of X = 2,636,151.00 and Y = 292,830.00, said point being the Southwest corner of said State Lease No. 17295, said point also being on said South line of said Block 48; thence West 801.00 feet on and along said South line of said Block 48, to the point of beginning, containing approximately **2,305.94 acres**, all as more particularly outlined on a plat on file in the Office of Mineral Resources, Department of Natural Resources. All bearings, distances and coordinates are based on Louisiana Coordinate System of 1927, (North or South Zone), where applicable.

NOTE: The above description of the Tract nominated for lease has been provided and corrected, where required, exclusively by the nomination party. Any mineral lease selected from this Tract and awarded by the Louisiana State Mineral Board shall be without warranty of any kind, either express, implied, or statutory, including, but not limited to, the implied warranties of merchantability and fitness for a particular purpose. Should the mineral lease awarded by the Louisiana State Mineral Board be subsequently modified, cancelled or abrogated due to the existence of conflicting leases, operating agreements, private claims or other future obligations or conditions which may affect all or any portion of the leased Tract, it shall not relieve the Lessee of the obligation to pay any bonus due thereon to the Louisiana State Mineral Board, nor shall the Louisiana State Mineral Board be obligated to refund any consideration paid by the Lessor prior to such modification, cancellation, or abrogation, including, but not limited to, bonuses, rentals and royalties.

NOTE: The State of Louisiana does hereby reserve, and this lease shall be subject to, the imprescriptible right of surface use in the nature of a servitude in favor of the Department of Natural Resources, including its Offices and Commissions, for the sole purpose of implementing, constructing, servicing and maintaining approved coastal zone management and/or restoration projects. Utilization of any and all rights derived under this lease by the mineral lessee, its agents, successors or assigns, shall not interfere with nor hinder the reasonable surface use by the Department of Natural Resources, its Offices or Commissions, as herein above reserved.

Applicant: Robert A. Schroeder, Inc.

Bidder	Cash Payment	Price/Acre	Rental	Oil	Gas	Other



PLAQUEMINES PARISH

BRETON SOUND AREA

MAIN PASS
AREA, REVISED

SL 12002

BLOCK BS0048

SL 17295

SL 17296

SL 18011

SL 18012

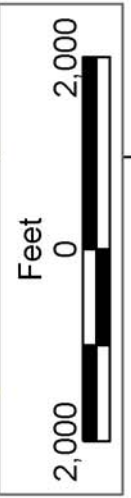
SL 17242

SL 17241

SL 17239

BLOCK BS0049

P.O.B.
X=2,635,350.00
Y=292,830.00



TRACT 36555 - Portion of Block 4, Eugene Island Area, Revised, Iberia Parish, Louisiana

All of the lands now or formerly constituting the beds and bottoms of all water bodies of every nature and description the title of which vests in the State of Louisiana, together with all islands arising therein and other lands formed by accretion or by reliction, where allowed by law, excepting tax adjudicated lands, and not presently under mineral lease on August 11, 2004, situated in Iberia Parish, Louisiana, and more particularly described as follows: Beginning at a point on the West boundary of Block 4, Eugene Island Area, Revised, having Coordinates of X = 1,879,822.72 and Y = 290,769.53; thence North 6,864.47 feet along the Western boundary of said Block 4 to its Northwest corner having Coordinates of X = 1,879,822.72 and Y = 297,634.00; thence East 15,278.28 feet along the Northern boundary of said Block 4 to its Northeast corner having Coordinates of X = 1,895,101.00 and Y = 297,634.00, said point also being on the West boundary of State Lease No. 340, as amended; thence South approximately 2,020 feet along the Eastern boundary of said Block 4 and the West boundary of said State Lease No. 340 to the Northeastern most corner of State Lease No. 4236, as amended; thence Southwesterly along the North boundary of said State Lease No. 4236 to a point being a common corner of said State Lease No. 4236 and State Lease No. 5492, as amended; thence continuing Southwesterly along the North boundary of said State Lease No. 5492 to its Southwest corner also being another common corner with said State Lease No. 4236; Thence West 5,677.28 feet to the point of beginning, **LESS AND EXCEPT** that portion if any of State Lease No. 340, as amended, State Lease No. 4236, as amended, and State Lease No. 5492, as amended, containing approximately **2,053.45 acres**, all as more particularly outlined on a plat on file in the Office of Mineral Resources, Department of Natural Resources. All bearings, distances and coordinates are based on Louisiana Coordinate System of 1927, (North or South Zone), where applicable.

NOTE: The above description of the Tract nominated for lease has been provided and corrected, where required, exclusively by the nomination party. Any mineral lease selected from this Tract and awarded by the Louisiana State Mineral Board shall be without warranty of any kind, either express, implied, or statutory, including, but not limited to, the implied warranties of merchantability and fitness for a particular purpose. Should the mineral lease awarded by the Louisiana State Mineral Board be subsequently modified, cancelled or abrogated due to the existence of conflicting leases, operating agreements, private claims or other future obligations or conditions which may affect all or any portion of the leased Tract, it shall not relieve the Lessee of the obligation to pay any bonus due thereon to the Louisiana State Mineral Board, nor shall the Louisiana State Mineral Board be obligated to refund any consideration paid by the Lessor prior to such modification, cancellation, or abrogation, including, but not limited to, bonuses, rentals and royalties.

NOTE: The above described tract may be in the vicinity of existing shell reefs where drilling and dredging operations must be conducted in strict conformity with the regulations adopted by the Louisiana Department of Wildlife and Fisheries and/or the U.S. Corps of Engineers, U.S. Army.

NOTE: The State of Louisiana does hereby reserve, and this lease shall be subject to, the imprescriptible right of surface use in the nature of a servitude in favor of the Department of Natural Resources, including its Offices and Commissions, for the sole purpose of implementing, constructing, servicing and maintaining approved coastal zone management and/or restoration projects. Utilization of any and all rights derived under this lease by the mineral lessee, its agents, successors or assigns, shall not interfere with nor hinder the reasonable surface use by the Department of Natural Resources, its Offices or Commissions, as herein above reserved.

NOTE: The Department of Wildlife and Fisheries has designated certain areas in the coastal waters of the State of Louisiana as Oyster Seed Bed Areas. The exact location of those Seed Bed Areas must be obtained from the Department of Wildlife and Fisheries and any work done under a mineral lease from the State of Louisiana may necessarily be conducted in conformity with the rules and regulations promulgated by the said Department of Wildlife and Fisheries for Oyster Seed Bed Areas.

Applicant: Energy Partners, Inc.

Bidder	Cash Payment	Price/Acre	Rental	Oil	Gas	Other



SL 17284

IBERIA PARISH

BLOCK EI0004

EUGENE ISLAND AREA, REVISED

SL 340

SL 4236

SL 5492

P.O.B.
X=1,879,822.72
Y=290,769.53



TRACT 36556 - Portion of Block 4, Eugene Island Area, Revised, Iberia Parish, Louisiana

All of the lands now or formerly constituting the beds and bottoms of all water bodies of every nature and description the title of which vests in the State of Louisiana, together with all islands arising therein and other lands formed by accretion or by reliction, where allowed by law, excepting tax adjudicated lands, and not presently under mineral lease on August 11, 2004, situated in Iberia Parish, Louisiana, and more particularly described as follows: Beginning at the Southwest Corner of Block 4, Eugene Island Area, Revised, having Coordinates of X = 1,879,822.72 and Y = 283,905.06; Thence North 6,864.47 feet along the Western Boundary of said Block 4 to a point having Coordinates of X = 1,879,822.72 and Y = 290,769.53; Thence East 5,677.28 feet to the Southwest Corner of State Lease No. 5492, as amended, said point being a common corner with State Lease No. 4236, as amended; Thence Southwesterly along the North Boundary of said State Lease No. 4236 to its Southwestern most corner; Thence Northeasterly along the South Boundary of said State Lease No. 4236 to a point having Coordinates of approximately X = 1,887,462.00 and Y = 289,240.00; Thence South 5,334.71 feet to a point on the South Boundary of said Block 4 having Coordinates of X = 1,887,462.38 and Y = 283,905.06; Thence West 7,639.66 feet along the South Boundary of said Block 4 to the point of beginning, **LESS AND EXCEPT** that portion if any of State Lease No. 4236, as amended, and State Lease No. 5492, as amended, containing approximately **1,054.98 acres**, all as more particularly outlined on a plat on file in the Office of Mineral Resources, Department of Natural Resources. All bearings, distances and coordinates are based on Louisiana Coordinate System of 1927, (North or South Zone), where applicable.

NOTE: The above description of the Tract nominated for lease has been provided and corrected, where required, exclusively by the nomination party. Any mineral lease selected from this Tract and awarded by the Louisiana State Mineral Board shall be without warranty of any kind, either express, implied, or statutory, including, but not limited to, the implied warranties of merchantability and fitness for a particular purpose. Should the mineral lease awarded by the Louisiana State Mineral Board be subsequently modified, cancelled or abrogated due to the existence of conflicting leases, operating agreements, private claims or other future obligations or conditions which may affect all or any portion of the leased Tract, it shall not relieve the Lessee of the obligation to pay any bonus due thereon to the Louisiana State Mineral Board, nor shall the Louisiana State Mineral Board be obligated to refund any consideration paid by the Lessor prior to such modification, cancellation, or abrogation, including, but not limited to, bonuses, rentals and royalties.

NOTE: The above described tract may be in the vicinity of existing shell reefs where drilling and dredging operations must be conducted in strict conformity with the regulations adopted by the Louisiana Department of Wildlife and Fisheries and/or the U.S. Corps of Engineers, U.S. Army.

NOTE: The State of Louisiana does hereby reserve, and this lease shall be subject to, the imprescriptible right of surface use in the nature of a servitude in favor of the Department of Natural Resources, including its Offices and Commissions, for the sole purpose of implementing, constructing, servicing and maintaining approved coastal zone management and/or restoration projects. Utilization of any and all rights derived under this lease by the mineral lessee, its agents, successors or assigns, shall not interfere with nor hinder the reasonable surface use by the Department of Natural Resources, its Offices or Commissions, as herein above reserved.

NOTE: The Department of Wildlife and Fisheries has designated certain areas in the coastal waters of the State of Louisiana as Oyster Seed Bed Areas. The exact location of those Seed Bed Areas must be obtained from the Department of Wildlife and Fisheries and any work done under a mineral lease from the State of Louisiana may necessarily be conducted in conformity with the rules and regulations promulgated by the said Department of Wildlife and Fisheries for Oyster Seed Bed Areas.

Applicant: Energy Partners, Inc.

Bidder	Cash Payment	Price/Acre	Rental	Oil	Gas	Other



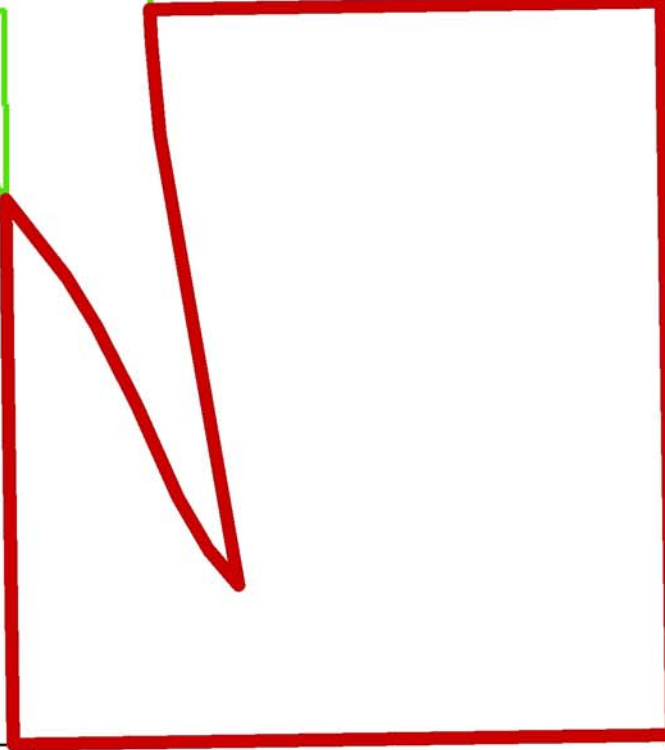
EUGENE ISLAND AREA, REVISED

IBERIA PARISH

BLOCK EI0004

SL 5492

SL 4236



SL 18083

BLOCK EI0005

P.O.B.
X=1,879,822.72
Y=283,905.06



TRACT 36557 - Portion of Block 4, Eugene Island Area, Revised, Iberia Parish, Louisiana

All of the lands now or formerly constituting the beds and bottoms of all water bodies of every nature and description the title of which vests in the State of Louisiana, together with all islands arising therein and other lands formed by accretion or by reliction, where allowed by law, excepting tax adjudicated lands, and not presently under mineral lease on August 11, 2004, situated in Iberia Parish, Louisiana, and more particularly described as follows: Beginning at the Southeast Corner of Block 4, Eugene Island Area, Revised, having Coordinates of X = 1,895,101.00 and Y = 283,905.06; thence West 7,638.62 feet along the South boundary of said Block 4 to a point having Coordinates of X = 1,887,462.38 and Y = 283,905.06; thence North 5,334.71 feet to a point on the Southern boundary of State Lease No. 4236, as amended, having Coordinates of X = 1,887,462.38 and Y = 289,239.77; thence Southeasterly along the South boundary of said State Lease No. 4236 to its most Southerly East corner, also being on the East boundary of said Block 4 and the West boundary of State Lease No. 340, as amended; thence South approximately 2,756.87 feet along the East boundary of said Block 4 and the West boundary of said State Lease No. 340 to the point of beginning, **LESS AND EXCEPT** that portion if any of State Lease No. 340, as amended, and State Lease No. 4236, as amended, containing approximately **759.49 acres**, all as more particularly outlined on a plat on file in the Office of Mineral Resources, Department of Natural Resources. All bearings, distances and coordinates are based on Louisiana Coordinate System of 1927, (North or South Zone), where applicable.

NOTE: The above description of the Tract nominated for lease has been provided and corrected, where required, exclusively by the nomination party. Any mineral lease selected from this Tract and awarded by the Louisiana State Mineral Board shall be without warranty of any kind, either express, implied, or statutory, including, but not limited to, the implied warranties of merchantability and fitness for a particular purpose. Should the mineral lease awarded by the Louisiana State Mineral Board be subsequently modified, cancelled or abrogated due to the existence of conflicting leases, operating agreements, private claims or other future obligations or conditions which may affect all or any portion of the leased Tract, it shall not relieve the Lessee of the obligation to pay any bonus due thereon to the Louisiana State Mineral Board, nor shall the Louisiana State Mineral Board be obligated to refund any consideration paid by the Lessor prior to such modification, cancellation, or abrogation, including, but not limited to, bonuses, rentals and royalties.

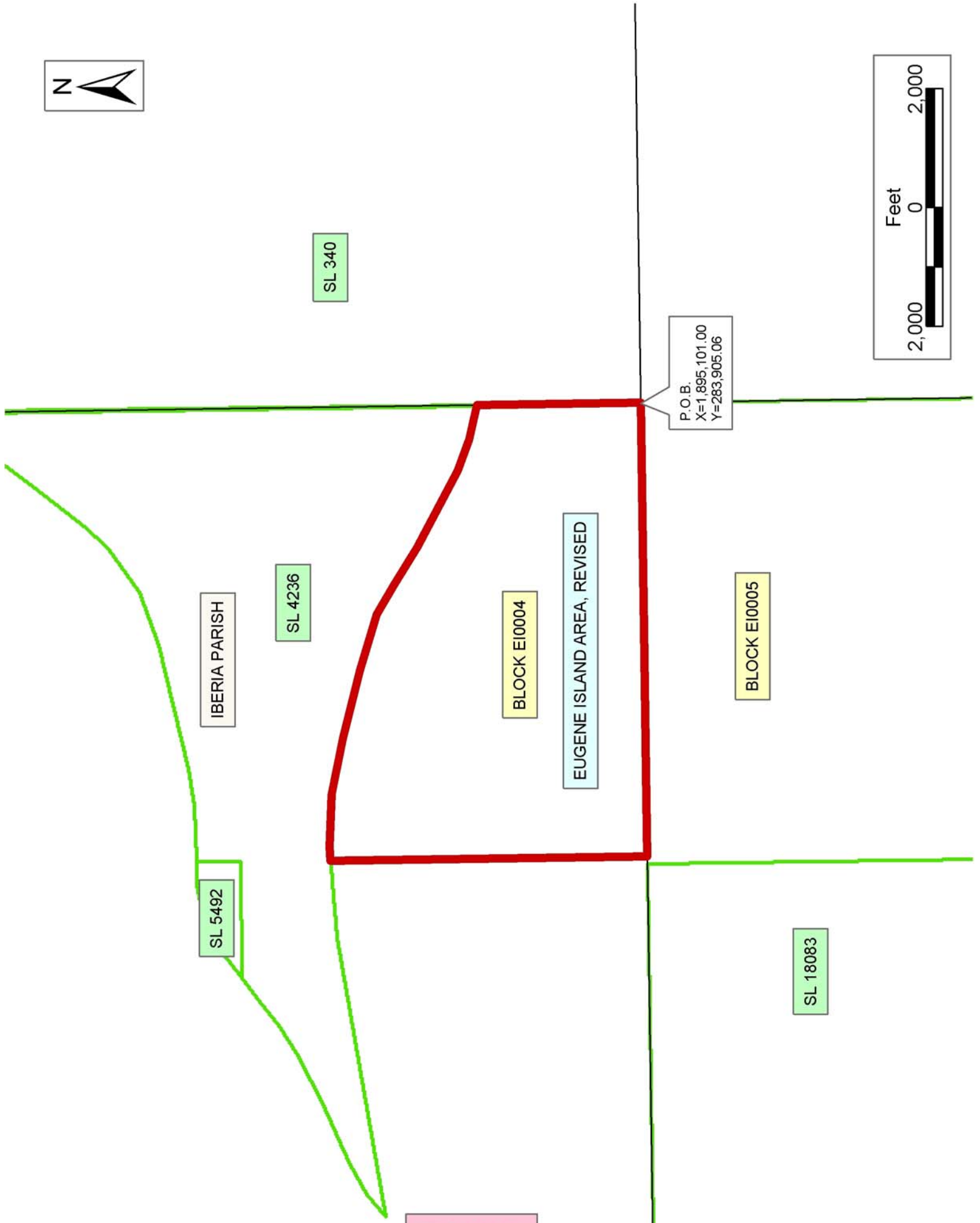
NOTE: The above described tract may be in the vicinity of existing shell reefs where drilling and dredging operations must be conducted in strict conformity with the regulations adopted by the Louisiana Department of Wildlife and Fisheries and/or the U.S. Corps of Engineers, U.S. Army.

NOTE: The State of Louisiana does hereby reserve, and this lease shall be subject to, the imprescriptible right of surface use in the nature of a servitude in favor of the Department of Natural Resources, including its Offices and Commissions, for the sole purpose of implementing, constructing, servicing and maintaining approved coastal zone management and/or restoration projects. Utilization of any and all rights derived under this lease by the mineral lessee, its agents, successors or assigns, shall not interfere with nor hinder the reasonable surface use by the Department of Natural Resources, its Offices or Commissions, as herein above reserved.

NOTE: The Department of Wildlife and Fisheries has designated certain areas in the coastal waters of the State of Louisiana as Oyster Seed Bed Areas. The exact location of those Seed Bed Areas must be obtained from the Department of Wildlife and Fisheries and any work done under a mineral lease from the State of Louisiana may necessarily be conducted in conformity with the rules and regulations promulgated by the said Department of Wildlife and Fisheries for Oyster Seed Bed Areas.

Applicant: Energy Partners, Inc.

Bidder	Cash Payment	Price/Acre	Rental	Oil	Gas	Other



TRACT 36558 - Lafourche and Terrebonne Parishes, Louisiana

All of the lands now or formerly constituting the beds and bottoms of all water bodies of every nature and description the title of which vests in the State of Louisiana, together with all islands arising therein and other lands formed by accretion or by reliction, where allowed by law, excepting tax adjudicated lands, and not presently under mineral lease on August 11, 2004, situated in Lafourche and Terrebonne Parishes, Louisiana, and more particularly described as follows: Beginning at a point having Coordinates of X = 2,260,583.59 and Y = 279,411.91; thence East 18,480.00 feet to a point having Coordinates of X = 2,279,063.59 and Y = 279,411.91; thence South 10,656.81 feet to a point having Coordinates of X = 2,279,063.59 and Y = 268,755.10; thence West 18,480.00 feet to a point having Coordinates of X = 2,260,583.59 and Y = 268,755.10; thence North 10,656.81 feet to the point of beginning, **LESS AND EXCEPT** all that portion if any, that lies within the Pointe-Aux-Chenes State Wildlife Management Area containing approximately **16 acres**, all as more particularly outlined on a plat on file in the Office of Mineral Resources, Department of Natural Resources. All bearings, distances and coordinates are based on Louisiana Coordinate System of 1927, (North or South Zone), where applicable.

NOTE: The above description of the Tract nominated for lease has been provided and corrected, where required, exclusively by the nomination party. Any mineral lease selected from this Tract and awarded by the Louisiana State Mineral Board shall be without warranty of any kind, either express, implied, or statutory, including, but not limited to, the implied warranties of merchantability and fitness for a particular purpose. Should the mineral lease awarded by the Louisiana State Mineral Board be subsequently modified, cancelled or abrogated due to the existence of conflicting leases, operating agreements, private claims or other future obligations or conditions which may affect all or any portion of the leased Tract, it shall not relieve the Lessee of the obligation to pay any bonus due thereon to the Louisiana State Mineral Board, nor shall the Louisiana State Mineral Board be obligated to refund any consideration paid by the Lessor prior to such modification, cancellation, or abrogation, including, but not limited to, bonuses, rentals and royalties.

NOTE: This Tract may be located within a Wildlife Management Area, Refuge, Game Preserve or other area under the management and jurisdiction of the Department of Wildlife and Fisheries. As such, any specific rules and regulations promulgated by said Department for the respective Wildlife Management Area, Refuges, Game Preserves or similar areas, as well as the following, may be, but are not necessarily, applicable to lease operations on this Tract:

1. No activities will be allowed without written authorization from the Louisiana Department of Wildlife and Fisheries.
2. Proposed projects will be evaluated on a case by case basis. Modifications to proposed project features including but not limited to

access routes, spoil placement, well sites, flowlines and appurtenant structures may be required by the Department of Wildlife and Fisheries.

3. Compensatory mitigation will be required to offset unavoidable wetland impacts.

Mitigation will be required to offset avoidable wetland impacts.

4. Removal of all structures, facilities and equipment will be required within 120 days of abandonment unless otherwise agreed to by the Louisiana Department of Wildlife and Fisheries.

5. No activities will be allowed during the hunting season unless approved by the Department.

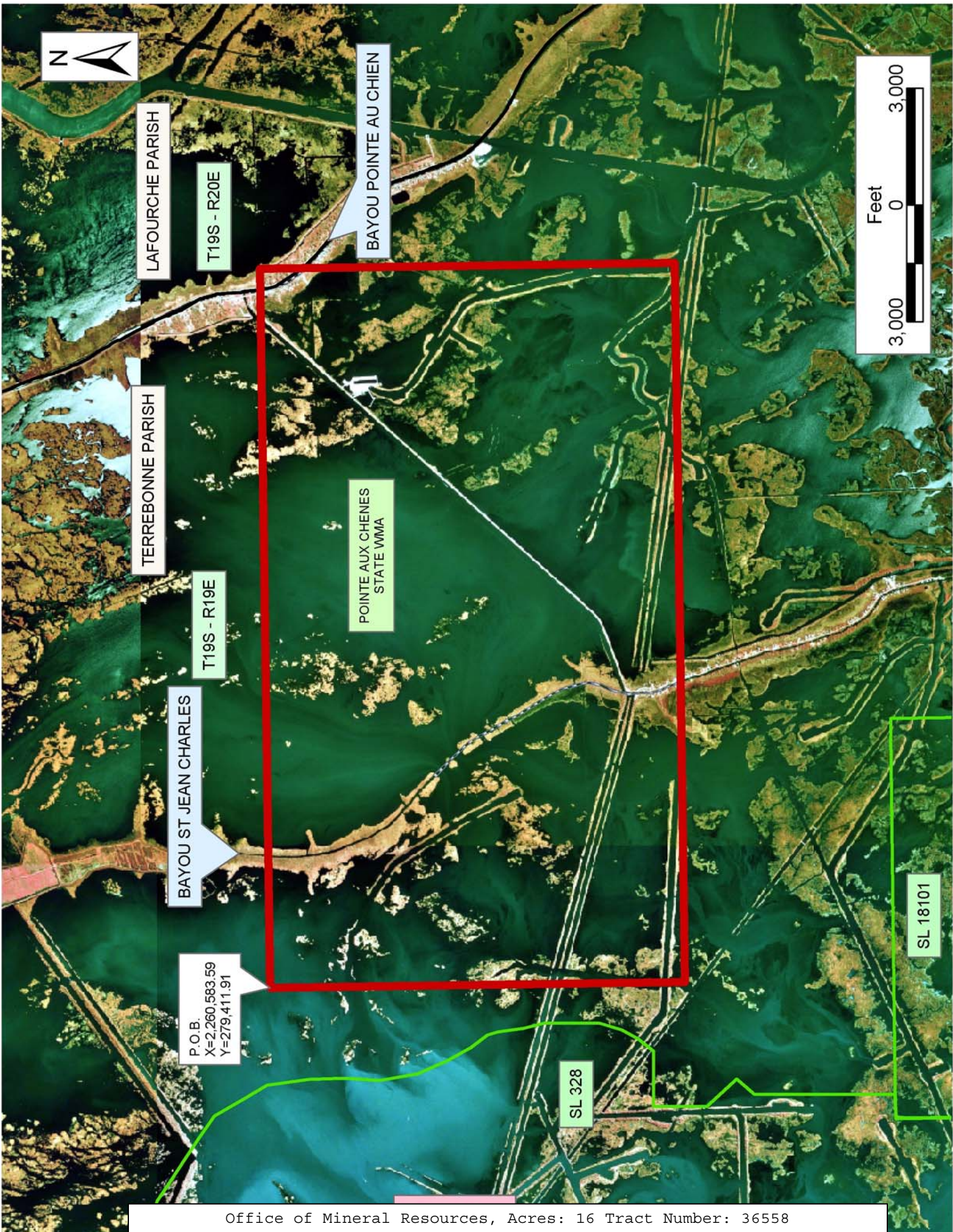
6. Compliance with the said WMA regulations will be required unless otherwise specified by the Department.

7. Prior to submitting applications for wetland permits to Federal and State permitting agencies the lease holder shall coordinate project details with the Louisiana Department of Wildlife and Fisheries, Fur and Refuge Division. Contact person for the Department will be Mike Windham at (504) 568-5886.

NOTE: The State of Louisiana does hereby reserve, and this lease shall be subject to, the imprescriptible right of surface use in the nature of a servitude in favor of the Department of Natural Resources, including its Offices and Commissions, for the sole purpose of implementing, constructing, servicing and maintaining approved coastal zone management and/or restoration projects. Utilization of any and all rights derived under this lease by the mineral lessee, its agents, successors or assigns, shall not interfere with nor hinder the reasonable surface use by the Department of Natural Resources, its Offices or Commissions, as herein above reserved.

Applicant: Leslie Cooper

Bidder	Cash Payment	Price/Acre	Rental	Oil	Gas	Other



LAFOURCHE PARISH

T19S - R20E

BAYOU POINTE AU CHIEN

TERREBONNE PARISH

T19S - R19E

POINTE AUX CHENES
STATE WMA

BAYOU ST JEAN CHARLES

P.O.B.
X=2,260,583.59
Y=279,411.91

SL 328

SL 18101



TRACT 36559 - Terrebonne Parish, Louisiana

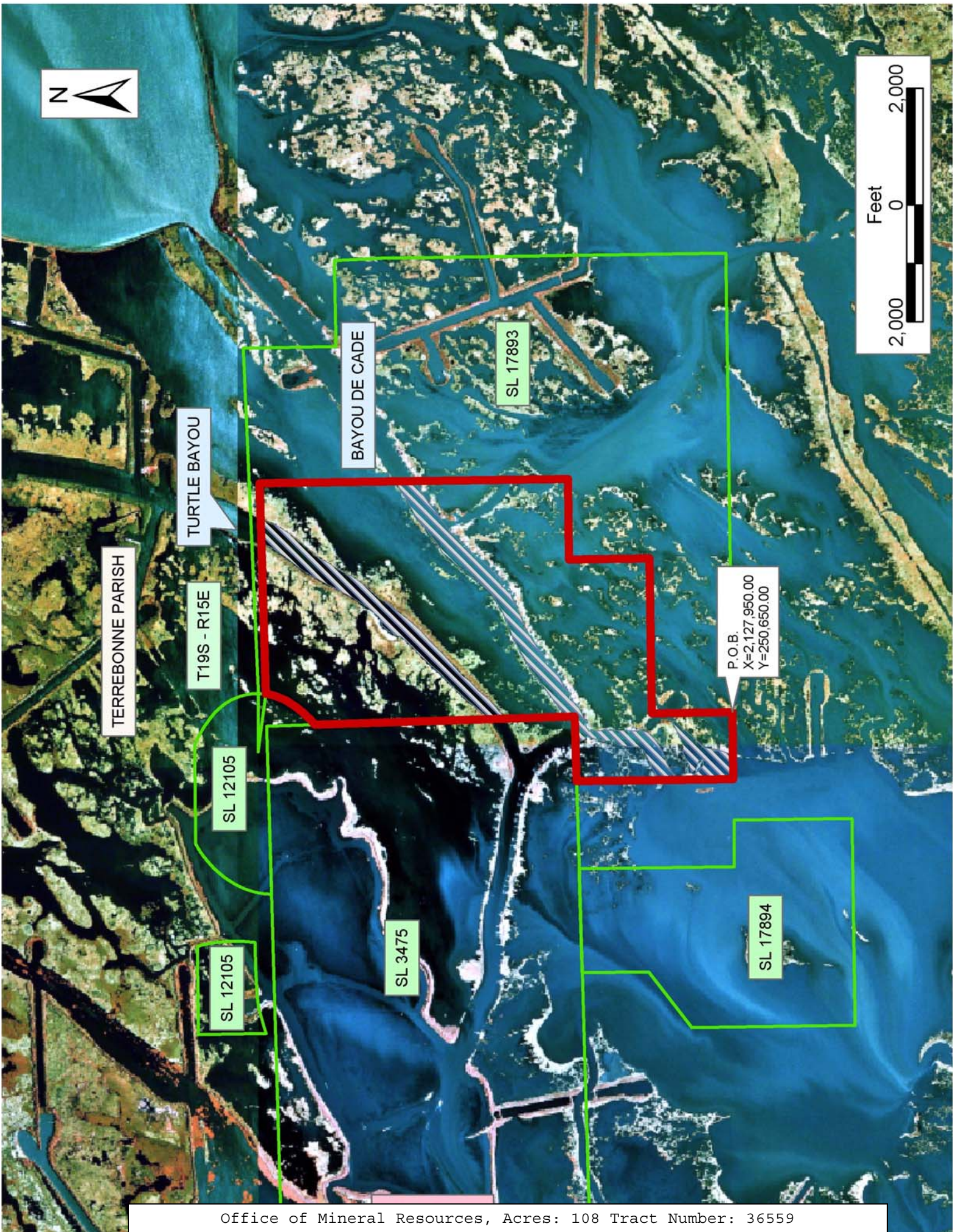
All of the lands now or formerly constituting the beds and bottoms of all water bodies of every nature and description the title of which vests in the State of Louisiana, together with all islands arising therein and other lands formed by accretion or by reliction, where allowed by law, excepting tax adjudicated lands, and not presently under mineral lease on August 11, 2004, situated in Terrebonne Parish, Louisiana, and more particularly described as follows: Beginning at the most South Southwest corner of State Lease 17893 having Coordinates of X = 2,127,950.00 and Y = 250,650.00; thence West 1,148.51 feet to a point having Coordinates of X = 2,126,801.49 and Y = 250,650.00; thence North 2,684.50 feet to a point on the South line of State Lease No. 3475, as amended having Coordinates of X = 2,126,801.49 and Y = 253,334.50; thence along the boundaries of said State Lease No. 3475 the following: North 89 degrees 08 minutes 28 seconds East 1,110.87 feet and North 01 degrees 00 minutes 41 seconds West 4,455.61 feet to a point on the boundary of State Lease No. 12105, as amended, having Coordinates of X = 2,127,833.59 and Y = 257,806.08; thence along the boundaries of said State Lease No. 12105 the following: Northeasterly on an arc having a radius of 1,750.00 feet and a center at X = 2,126,747.50 and Y = 259,178.27 to a point having Coordinates of X = 2,128,235.53 and Y = 258,257.26 and Northeasterly on an arc having a radius of 1,000.00 feet and a center at X = 2,127,385.23 and Y = 258,783.55 to a point on the Western boundary of said State Lease No. 17893 having Coordinates of X = 2,128,374.67 and Y = 258,638.67; thence along the Western boundary of said State Lease No. 17893 the following: North 89 degrees 08 minutes 28 seconds East 3,610.73 feet, South 5,282.79 feet, West 1,385.00 feet, South 1,380.00 feet, West 2,650.00 feet and South 1,380.00 feet to the Point of Beginning, containing approximately **108 acres**, all as more particularly outlined on a plat on file in the Office of Mineral Resources, Department of Natural Resources. All bearings, distances and coordinates are based on Louisiana Coordinate System of 1927, (North or South Zone), where applicable.

NOTE: The above description of the Tract nominated for lease has been provided and corrected, where required, exclusively by the nomination party. Any mineral lease selected from this Tract and awarded by the Louisiana State Mineral Board shall be without warranty of any kind, either express, implied, or statutory, including, but not limited to, the implied warranties of merchantability and fitness for a particular purpose. Should the mineral lease awarded by the Louisiana State Mineral Board be subsequently modified, cancelled or abrogated due to the existence of conflicting leases, operating agreements, private claims or other future obligations or conditions which may affect all or any portion of the leased Tract, it shall not relieve the Lessee of the obligation to pay any bonus due thereon to the Louisiana State Mineral Board, nor shall the Louisiana State Mineral Board be obligated to refund any consideration paid by the Lessor prior to such modification, cancellation, or abrogation, including, but not limited to, bonuses, rentals and royalties.

NOTE: The State of Louisiana does hereby reserve, and this lease shall be subject to, the imprescriptible right of surface use in the nature of a servitude in favor of the Department of Natural Resources, including its Offices and Commissions, for the sole purpose of implementing, constructing, servicing and maintaining approved coastal zone management and/or restoration projects. Utilization of any and all rights derived under this lease by the mineral lessee, its agents, successors or assigns, shall not interfere with nor hinder the reasonable surface use by the Department of Natural Resources, its Offices or Commissions, as herein above reserved.

Applicant: Leslie Cooper

Bidder	Cash Payment	Price/Acre	Rental	Oil	Gas	Other



TERREBONNE PARISH

TURTLE BAYOU

BAYOU DE CADE

T19S - R15E

SL 12105

SL 12105

SL 3475

SL 17893

P.O.B.
X=2,127,950.00
Y=250,650.00

SL 17894

TRACT 36560 - Terrebonne Parish, Louisiana

All of the lands now or formerly constituting the beds and bottoms of all water bodies of every nature and description the title of which vests in the State of Louisiana, together with all islands arising therein and other lands formed by accretion or by reliction, where allowed by law, excepting tax adjudicated lands, and not presently under mineral lease on August 11, 2004, situated in Terrebonne Parish, Louisiana, and more particularly described as follows: Beginning at a point having Coordinates of X = 2,245,472.48 and Y = 215,834.29; thence East 15,766.62 feet to a point having Coordinates of X = 2,261,239.10 and Y = 215,834.29; thence South 3,077.54 feet to a point on the North Line of State Lease No. 199, as amended, having Coordinates of X = 2,261,239.10 and Y = 212,756.75; thence along the boundary of said State Lease No. 199 the following: South 89 degrees 34 minutes 50 seconds West 3,708.02 feet, South 00 degrees 25 minutes 10 seconds East 2,453.02 feet, South 58 degrees 22 minutes 50 seconds East 727.40 feet, South 62 degrees 20 minutes 44 seconds East 929.31 feet, South 66 degrees 23 minutes 23 seconds East 922.32 feet and South 70 degrees 28 minutes 30 seconds East 919.97 feet to a point on its West Line having Coordinates of X = 2,260,703.89 and Y = 208,787.09; thence West 15,231.41 feet to a point having Coordinates of X = 2,245,472.48 and Y = 208,787.09; thence North 7,047.20 feet to the point of beginning, containing approximately **2,263.06 acres**, all as more particularly outlined on a plat on file in the Office of Mineral Resources, Department of Natural Resources. All bearings, distances and coordinates are based on Louisiana Coordinate System of 1927, (North or South Zone), where applicable.

NOTE: The above description of the Tract nominated for lease has been provided and corrected, where required, exclusively by the nomination party. Any mineral lease selected from this Tract and awarded by the Louisiana State Mineral Board shall be without warranty of any kind, either express, implied, or statutory, including, but not limited to, the implied warranties of merchantability and fitness for a particular purpose. Should the mineral lease awarded by the Louisiana State Mineral Board be subsequently modified, cancelled or abrogated due to the existence of conflicting leases, operating agreements, private claims or other future obligations or conditions which may affect all or any portion of the leased Tract, it shall not relieve the Lessee of the obligation to pay any bonus due thereon to the Louisiana State Mineral Board, nor shall the Louisiana State Mineral Board be obligated to refund any consideration paid by the Lessor prior to such modification, cancellation, or abrogation, including, but not limited to, bonuses, rentals and royalties.

NOTE: The State of Louisiana does hereby reserve, and this lease shall be subject to, the imprescriptible right of surface use in the nature of a servitude in favor of the Department of Natural Resources, including its Offices and Commissions, for the sole purpose of implementing, constructing, servicing and maintaining approved coastal zone management and/or restoration projects. Utilization of any and all rights derived

under this lease by the mineral lessee, its agents, successors or assigns, shall not interfere with nor hinder the reasonable surface use by the Department of Natural Resources, its Offices or Commissions, as herein above reserved.

NOTE: The Department of Wildlife and Fisheries has designated certain areas in the coastal waters of the State of Louisiana as Oyster Seed Bed Areas. The exact location of those Seed Bed Areas must be obtained from the Department of Wildlife and Fisheries and any work done under a mineral lease from the State of Louisiana may necessarily be conducted in conformity with the rules and regulations promulgated by the said Department of Wildlife and Fisheries for Oyster Seed Bed Areas.

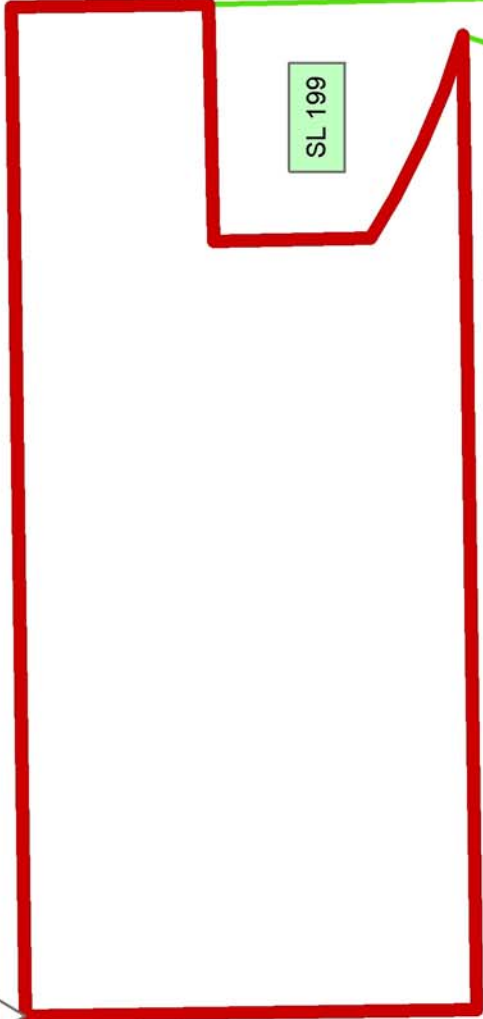
Applicant: Cummings Energy

Bidder	Cash Payment	Price/Acre	Rental	Oil	Gas	Other



TERREBONNE PARISH

P.O.B.
X=2,245,472.48
Y=215,834.29



SL 199

LAKE BARRE

