

TRACT 36542 - Plaquemines Parish, Louisiana

All of the lands now or formerly constituting the beds and bottoms of all water bodies of every nature and description the title of which vests in the State of Louisiana, together with all islands arising therein and other lands formed by accretion or by reliction, where allowed by law, excepting tax adjudicated lands, and not presently under mineral lease on August 11, 2004, situated in Plaquemines Parish, Louisiana, and more particularly described as follows: Beginning at a point having Coordinates of X = 2,506,810.00 and Y = 350,000.00; thence West approximately 5,354 feet to a point on the East line of State Lease No. 1212, as amended, having a Coordinate of Y = 350,000.00; thence along the boundary of said State Lease No. 1212 the following courses: Northerly, Westerly, Northerly and Westerly to an intersection with a North South line having a Coordinate of X = 2,492,378.00; thence North approximately 4,970 feet to a point on the South line of State Lease No. 335, as amended, having a Coordinate of X = 2,492,378.00; thence Easterly along the South line of said State Lease No. 335 to an intersection with a North South line having a Coordinate of X = 2,507,020.00; thence South approximately 6,553 feet to the Northwest corner of State Lease No. 18077 having Coordinates of X = 2,507,020.00 and Y = 355,176.00; thence South 04 degrees 59 minutes 18 seconds West 2,415.15 feet along the West line of said State Lease No. 18077 to its Southwest corner having Coordinates of X = 2,506,810.00 and Y = 352,770.00; thence South 2,770.00 feet to the point of beginning, **LESS AND EXCEPT** any portion of State Lease No. 335, as amended, and State Lease No. 1212, as amended that may lie within the above described tract, containing approximately **1,660 acres**, all as more particularly outlined on a plat on file in the Office of Mineral Resources, Department of Natural Resources. All bearings, distances and coordinates are based on Louisiana Coordinate System of 1927, (North or South Zone), where applicable.

NOTE: The above description of the Tract nominated for lease has been provided and corrected, where required, exclusively by the nomination party. Any mineral lease selected from this Tract and awarded by the Louisiana State Mineral Board shall be without warranty of any kind, either express, implied, or statutory, including, but not limited to, the implied warranties of merchantability and fitness for a particular purpose. Should the mineral lease awarded by the Louisiana State Mineral Board be subsequently modified, cancelled or abrogated due to the existence of conflicting leases, operating agreements, private claims or other future obligations or conditions which may affect all or any portion of the leased Tract, it shall not relieve the Lessee of the obligation to pay any bonus due thereon to the Louisiana State Mineral Board, nor shall the Louisiana State Mineral Board be obligated to refund any consideration paid by the Lessor prior to such modification, cancellation, or abrogation, including, but not limited to, bonuses, rentals and royalties.

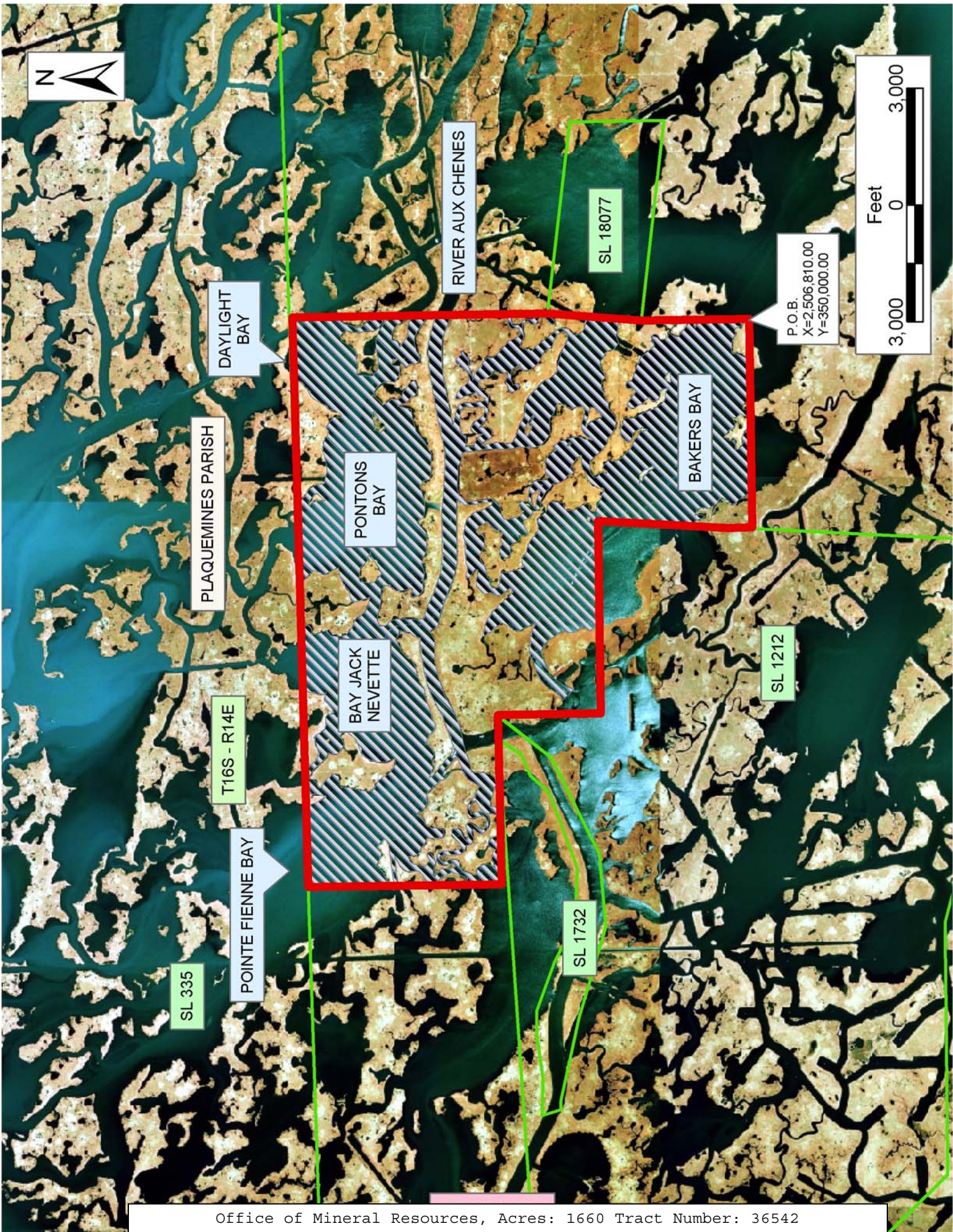
NOTE: The State of Louisiana does hereby reserve, and this lease shall be subject to, the imprescriptible right of surface use in the nature of a servitude in favor of the Department of Natural Resources, including its

Offices and Commissions, for the sole purpose of implementing, constructing, servicing and maintaining approved coastal zone management and/or restoration projects. Utilization of any and all rights derived under this lease by the mineral lessee, its agents, successors or assigns, shall not interfere with nor hinder the reasonable surface use by the Department of Natural Resources, its Offices or Commissions, as herein above reserved.

NOTE: The Department of Wildlife and Fisheries has designated certain areas in the coastal waters of the State of Louisiana as Oyster Seed Bed Areas. The exact location of those Seed Bed Areas must be obtained from the Department of Wildlife and Fisheries and any work done under a mineral lease from the State of Louisiana may necessarily be conducted in conformity with the rules and regulations promulgated by the said Department of Wildlife and Fisheries for Oyster Seed Bed Areas.

Applicant: Fidelity Fuels

Bidder	Cash Payment	Price/Acre	Rental	Oil	Gas	Other



TRACT 36543 - Plaquemines Parish, Louisiana

All of the lands now or formerly constituting the beds and bottoms of all water bodies of every nature and description the title of which vests in the State of Louisiana, together with all islands arising therein and other lands formed by accretion or by reliction, where allowed by law, excepting tax adjudicated lands, and not presently under mineral lease on August 11, 2004, situated in Plaquemines Parish, Louisiana, and more particularly described as follows: Beginning at a point having Coordinates of X = 2,477,878.00 and Y = 350,000.00; thence North approximately 11,330 feet to a point on the South line of State Lease No. 335, as amended, having a Coordinate of X = 2,477,878.00; thence Easterly along the South line of said State Lease No. 335 to an intersection with a North South line having a Coordinate of X = 2,492,378.00; thence South approximately 4,970 feet to a point on the North line of State Lease No. 1212, as amended having a Coordinate of X = 2,492,378.00; thence along the boundary of said State Lease No. 1212 the following courses: Westerly and Southerly to an intersection with a East West line having a Coordinate of Y = 350,000.00; thence West approximately 2,586 feet to the point of beginning, **LESS AND EXCEPT** any portion of State Lease No. 335, as amended and State Lease No. 1212, as amended that may lie within the above described tract, containing approximately **894 acres**, all as more particularly outlined on a plat on file in the Office of Mineral Resources, Department of Natural Resources. All bearings, distances and coordinates are based on Louisiana Coordinate System of 1927, (North or South Zone), where applicable.

NOTE: The above description of the Tract nominated for lease has been provided and corrected, where required, exclusively by the nomination party. Any mineral lease selected from this Tract and awarded by the Louisiana State Mineral Board shall be without warranty of any kind, either express, implied, or statutory, including, but not limited to, the implied warranties of merchantability and fitness for a particular purpose. Should the mineral lease awarded by the Louisiana State Mineral Board be subsequently modified, cancelled or abrogated due to the existence of conflicting leases, operating agreements, private claims or other future obligations or conditions which may affect all or any portion of the leased Tract, it shall not relieve the Lessee of the obligation to pay any bonus due thereon to the Louisiana State Mineral Board, nor shall the Louisiana State Mineral Board be obligated to refund any consideration paid by the Lessor prior to such modification, cancellation, or abrogation, including, but not limited to, bonuses, rentals and royalties.

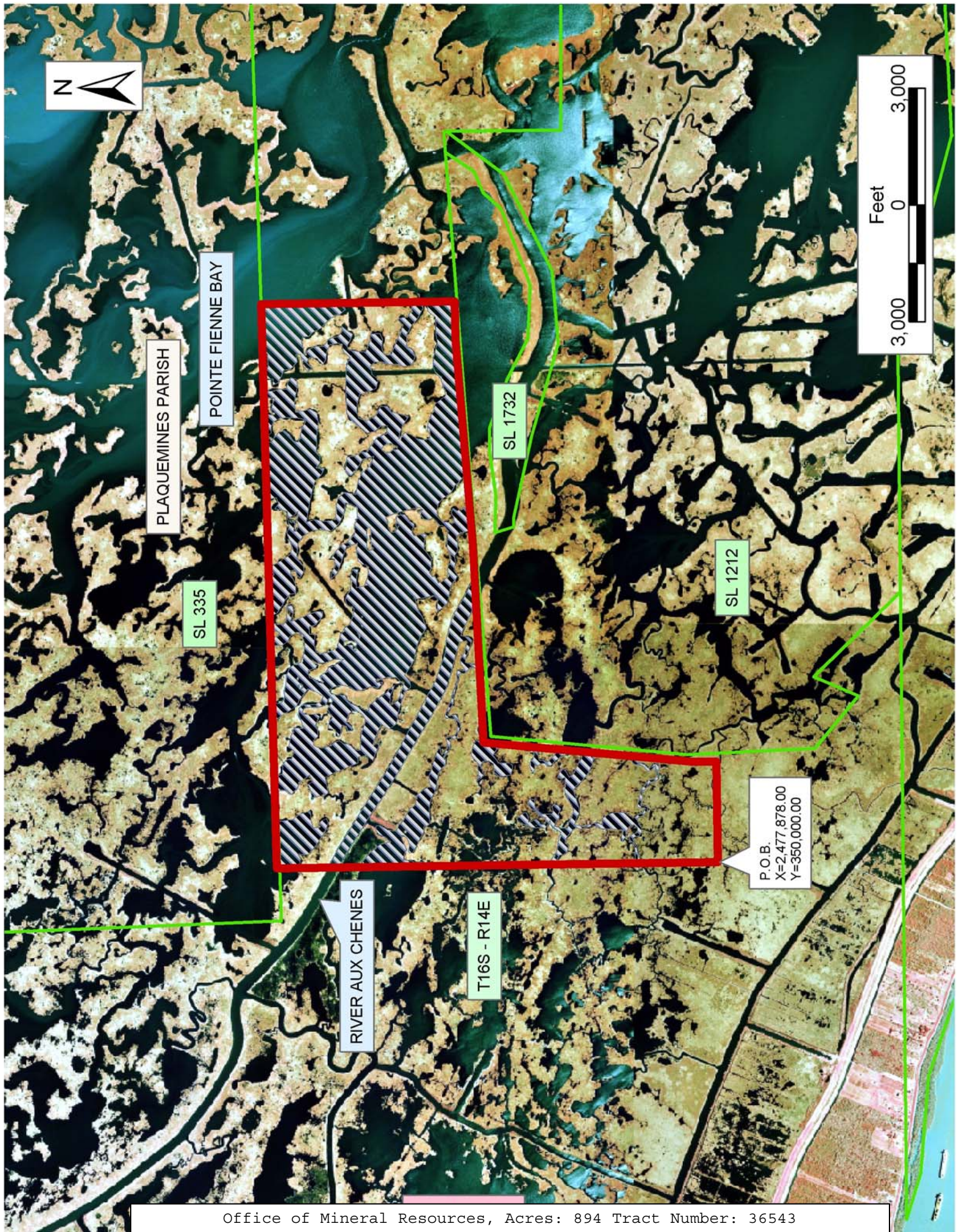
NOTE: The State of Louisiana does hereby reserve, and this lease shall be subject to, the imprescriptible right of surface use in the nature of a servitude in favor of the Department of Natural Resources, including its Offices and Commissions, for the sole purpose of implementing, constructing, servicing and maintaining approved coastal zone management and/or restoration projects. Utilization of any and all rights derived under this lease by the mineral lessee, its agents, successors or assigns,

shall not interfere with nor hinder the reasonable surface use by the Department of Natural Resources, its Offices or Commissions, as herein above reserved.

NOTE: The Department of Wildlife and Fisheries has designated certain areas in the coastal waters of the State of Louisiana as Oyster Seed Bed Areas. The exact location of those Seed Bed Areas must be obtained from the Department of Wildlife and Fisheries and any work done under a mineral lease from the State of Louisiana may necessarily be conducted in conformity with the rules and regulations promulgated by the said Department of Wildlife and Fisheries for Oyster Seed Bed Areas.

Applicant: Fidelity Fuels

Bidder	Cash Payment	Price/Acre	Rental	Oil	Gas	Other



TRACT 36544 - Portion of Block 16, Breton Sound Area, Plaquemines and St. Bernard Parishes, Louisiana

All of the lands now or formerly constituting the beds and bottoms of all water bodies of every nature and description the title of which vests in the State of Louisiana, together with all islands arising therein and other lands formed by accretion or by reliction, where allowed by law, excepting tax adjudicated lands, and not presently under mineral lease on August 11, 2004, situated in Plaquemines and St. Bernard Parishes, Louisiana, and more particularly described as follows: Beginning at a point having Coordinates of X = 2,635,350.00 and Y = 351,830.00, said point being the Southwest corner of Block 16, Breton Sound Area; thence North 7,375.00 feet on and along the West line of said Block 16, to a point having Coordinates of X = 2,635,350.00 and Y = 359,205.00; thence East 7,402.46 feet to a point having Coordinates of X = 2,642,752.46 and Y = 359,205.00, said point being the Northernmost Northwest corner of State Lease No. 17303; thence on and along the Western, Southern and Eastern boundaries of said State Lease No. 17303 the following courses and distances, to wit: South 32 degrees 45 minutes 20 seconds West 4,312.79 feet to a point having Coordinates of X = 2,640,419.00 and Y = 355,578.00; South 54 degrees 49 minutes 05 seconds East 4,793.68 feet to a point having Coordinates of X = 2,644,337.00 and Y = 352,816.00; North 31 degrees 14 minutes 49 seconds East 5,205.05 feet to a point having Coordinates of X = 2,647,037.00 and Y = 357,266.00; and North 58 degrees 18 minutes 05 seconds West 3,690.16 feet to a point having Coordinates of X = 2,643,897.33 and Y = 359,205.00, said point being the Northernmost Northeast corner of said State Lease No. 17303; thence East 6,202.67 feet to a point having Coordinates of X = 2,650,100.00 and Y = 359,205.00, said point being on the East line of said Block 16; thence South 7,375.00 feet on and along said East line of said Block 16, to a point having Coordinates of X = 2,650,100.00 and Y = 351,830.00, said point being the Southeast corner of said Block 16; thence West 14,750.00 feet on and along the South line of said Block 16, to the point of beginning, containing approximately **1,955.75 acres**, all as more particularly outlined on a plat on file in the Office of Mineral Resources, Department of Natural Resources. All bearings, distances and coordinates are based on Louisiana Coordinate System of 1927, (North or South Zone), where applicable.

NOTE: The above description of the Tract nominated for lease has been provided and corrected, where required, exclusively by the nomination party. Any mineral lease selected from this Tract and awarded by the Louisiana State Mineral Board shall be without warranty of any kind, either express, implied, or statutory, including, but not limited to, the implied warranties of merchantability and fitness for a particular purpose. Should the mineral lease awarded by the Louisiana State Mineral Board be subsequently modified, cancelled or abrogated due to the existence of conflicting leases, operating agreements, private claims or other future obligations or conditions which may affect all or any portion of the leased Tract, it shall not relieve the Lessee of the obligation to pay any bonus due thereon to the Louisiana State Mineral Board, nor shall

the Louisiana State Mineral Board be obligated to refund any consideration paid by the Lessor prior to such modification, cancellation, or abrogation, including, but not limited to, bonuses, rentals and royalties.

NOTE: The State of Louisiana does hereby reserve, and this lease shall be subject to, the imprescriptible right of surface use in the nature of a servitude in favor of the Department of Natural Resources, including its Offices and Commissions, for the sole purpose of implementing, constructing, servicing and maintaining approved coastal zone management and/or restoration projects. Utilization of any and all rights derived under this lease by the mineral lessee, its agents, successors or assigns, shall not interfere with nor hinder the reasonable surface use by the Department of Natural Resources, its Offices or Commissions, as herein above reserved.

NOTE: It appears, according to our records, that a portion of this Tract is located within the restrictive safety fairway area as set out by the Corps of Engineers, U.S. Army and/or the restrictive anchorage area as set out by the U.S. Coast Guard.

Applicant: Robert A. Schroeder, Inc.

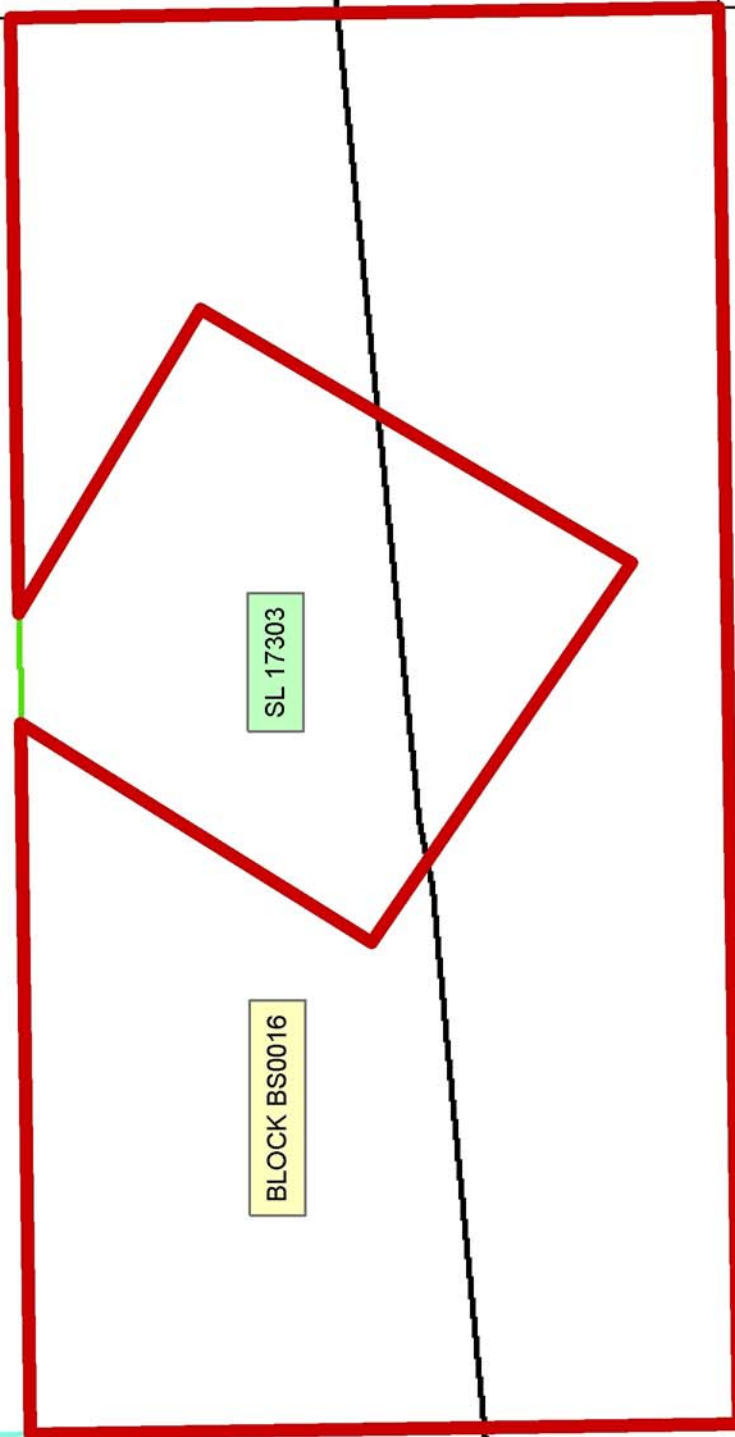
Bidder	Cash Payment	Price/Acre	Rental	Oil	Gas	Other



ST BERNARD PARISH

BRETON SOUND AREA

PLAQUEMINES PARISH

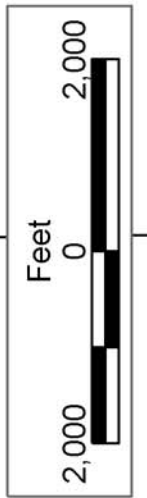


BLOCK BS0016

SL 17303

BLOCK BS0017

P.O.B.
X=2,635,350.00
Y=351,830.00



TRACT 36545 - Portion of Block 17, Breton Sound Area, Plaquemines Parish, Louisiana

All of the lands now or formerly constituting the beds and bottoms of all water bodies of every nature and description the title of which vests in the State of Louisiana, together with all islands arising therein and other lands formed by accretion or by reliction, where allowed by law, excepting tax adjudicated lands, and not presently under mineral lease on August 11, 2004, situated in Plaquemines Parish, Louisiana, and more particularly described as follows: Beginning at a point having Coordinates of X = 2,635,350.00 and Y = 351,830.00, said point being the Northwest corner of Block 17, Breton Sound Area; thence East 14,750.00 feet on and along the North line of said Block 17, to a point having Coordinates of X = 2,650,100.00 and Y = 351,830.00, said point being the Northeast corner of said Block 17; thence South 7,375.00 feet on and along the East line of said Block 17, to a point having Coordinates of X = 2,650,100.00 and Y = 344,455.00; thence West 14,750.00 feet to a point having Coordinates of X = 2,635,350.00 and Y = 344,455.00, said point being on the West line of said Block 17; thence North 7,375.00 feet on and along said West line of said Block 17, to the point of beginning, containing approximately **2,497.27 acres**, all as more particularly outlined on a plat on file in the Office of Mineral Resources, Department of Natural Resources. All bearings, distances and coordinates are based on Louisiana Coordinate System of 1927, (North or South Zone), where applicable.

NOTE: The above description of the Tract nominated for lease has been provided and corrected, where required, exclusively by the nomination party. Any mineral lease selected from this Tract and awarded by the Louisiana State Mineral Board shall be without warranty of any kind, either express, implied, or statutory, including, but not limited to, the implied warranties of merchantability and fitness for a particular purpose. Should the mineral lease awarded by the Louisiana State Mineral Board be subsequently modified, cancelled or abrogated due to the existence of conflicting leases, operating agreements, private claims or other future obligations or conditions which may affect all or any portion of the leased Tract, it shall not relieve the Lessee of the obligation to pay any bonus due thereon to the Louisiana State Mineral Board, nor shall the Louisiana State Mineral Board be obligated to refund any consideration paid by the Lessor prior to such modification, cancellation, or abrogation, including, but not limited to, bonuses, rentals and royalties.

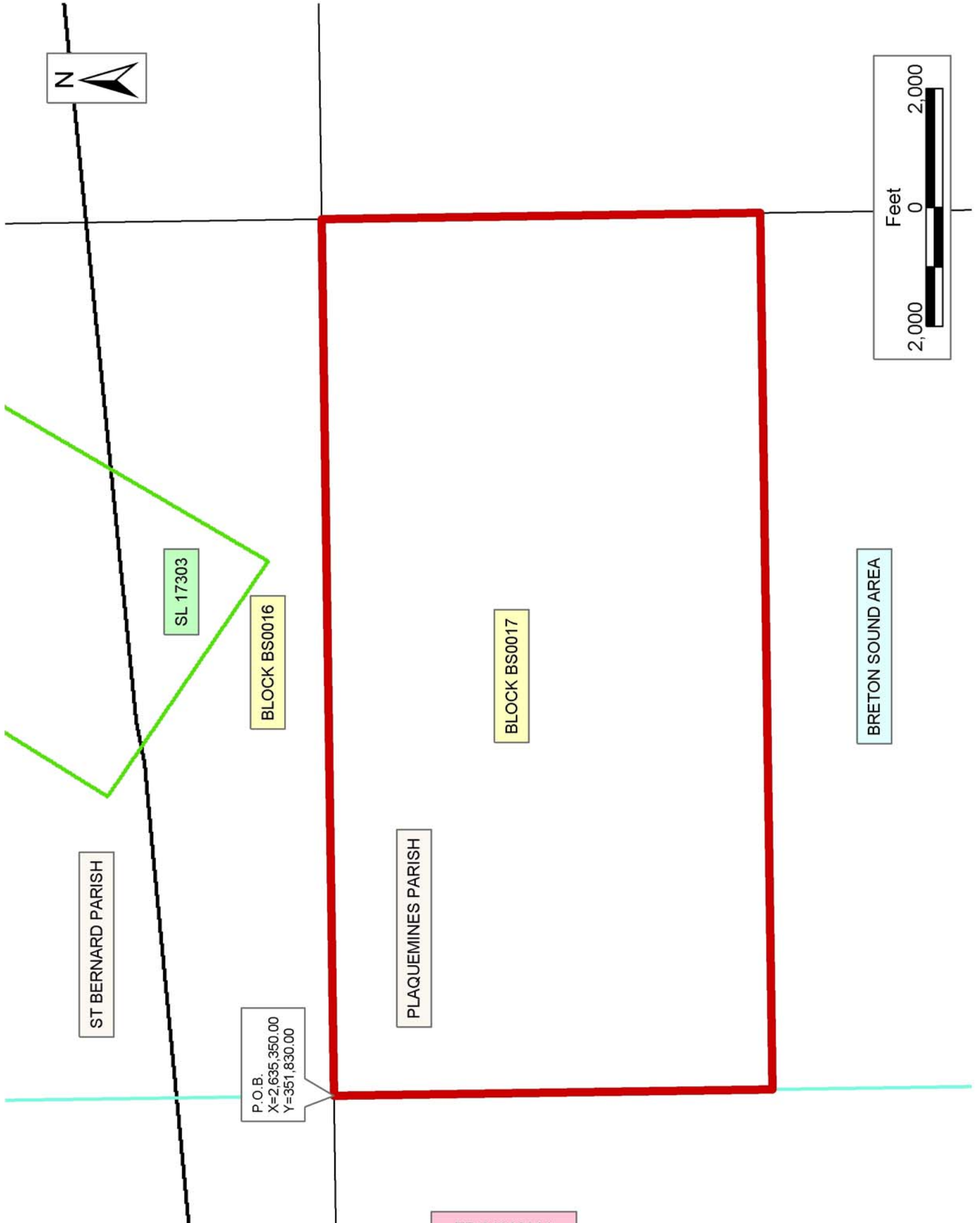
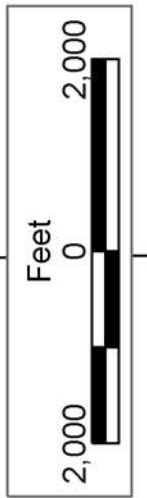
NOTE: The State of Louisiana does hereby reserve, and this lease shall be subject to, the imprescriptible right of surface use in the nature of a servitude in favor of the Department of Natural Resources, including its Offices and Commissions, for the sole purpose of implementing, constructing, servicing and maintaining approved coastal zone management and/or restoration projects. Utilization of any and all rights derived under this lease by the mineral lessee, its agents, successors or assigns, shall not interfere with nor hinder the reasonable surface use by the

Department of Natural Resources, its Offices or Commissions, as herein above reserved.

NOTE: It appears, according to our records, that a portion of this Tract is located within the restrictive safety fairway area as set out by the Corps of Engineers, U.S. Army and/or the restrictive anchorage area as set out by the U.S. Coast Guard.

Applicant: Robert A. Schroeder, Inc.

Bidder	Cash Payment	Price/Acre	Rental	Oil	Gas	Other



ST BERNARD PARISH

SL 17303

BLOCK BS0016

PLAQUEMINES PARISH

BLOCK BS0017

BRETON SOUND AREA

P.O.B.
X=2,635,350.00
Y=351,830.00



TRACT 36546 - Portion of Block 17, Breton Sound Area, Plaquemines Parish, Louisiana

All of the lands now or formerly constituting the beds and bottoms of all water bodies of every nature and description the title of which vests in the State of Louisiana, together with all islands arising therein and other lands formed by accretion or by reliction, where allowed by law, excepting tax adjudicated lands, and not presently under mineral lease on August 11, 2004, situated in Plaquemines Parish, Louisiana, and more particularly described as follows: Beginning at a point having Coordinates of X = 2,635,350.00 and Y = 337,080.00, said point being the Southwest corner of Block 17, Breton Sound Area; thence North 7,375.00 feet on and along the West line of said Block 17, to a point having Coordinates of X = 2,635,350.00 and Y = 344,455.00; thence East 14,750.00 feet to a point having Coordinates of X = 2,650,100.00 and Y = 344,455.00, said point being on the East line of said Block 17; thence South 7,375.00 feet on and along said East line of said Block 17, to a point having Coordinates of X = 2,650,100.00 and Y = 337,080.00, said point being the Southeast corner of said Block 17; thence West 14,750.00 feet on and along the South line of said Block 17, to the point of beginning, containing approximately **2,497.27 acres**, all as more particularly outlined on a plat on file in the Office of Mineral Resources, Department of Natural Resources. All bearings, distances and coordinates are based on Louisiana Coordinate System of 1927, (North or South Zone), where applicable.

NOTE: The above description of the Tract nominated for lease has been provided and corrected, where required, exclusively by the nomination party. Any mineral lease selected from this Tract and awarded by the Louisiana State Mineral Board shall be without warranty of any kind, either express, implied, or statutory, including, but not limited to, the implied warranties of merchantability and fitness for a particular purpose. Should the mineral lease awarded by the Louisiana State Mineral Board be subsequently modified, cancelled or abrogated due to the existence of conflicting leases, operating agreements, private claims or other future obligations or conditions which may affect all or any portion of the leased Tract, it shall not relieve the Lessee of the obligation to pay any bonus due thereon to the Louisiana State Mineral Board, nor shall the Louisiana State Mineral Board be obligated to refund any consideration paid by the Lessor prior to such modification, cancellation, or abrogation, including, but not limited to, bonuses, rentals and royalties.

NOTE: The State of Louisiana does hereby reserve, and this lease shall be subject to, the imprescriptible right of surface use in the nature of a servitude in favor of the Department of Natural Resources, including its Offices and Commissions, for the sole purpose of implementing, constructing, servicing and maintaining approved coastal zone management and/or restoration projects. Utilization of any and all rights derived under this lease by the mineral lessee, its agents, successors or assigns, shall not interfere with nor hinder the reasonable surface use by the

Department of Natural Resources, its Offices or Commissions, as herein above reserved.

NOTE: It appears, according to our records, that a portion of this Tract is located within the restrictive safety fairway area as set out by the Corps of Engineers, U.S. Army and/or the restrictive anchorage area as set out by the U.S. Coast Guard.

Applicant: Robert A. Schroeder, Inc.

Bidder	Cash Payment	Price/Acre	Rental	Oil	Gas	Other



PLAQUEMINES PARISH

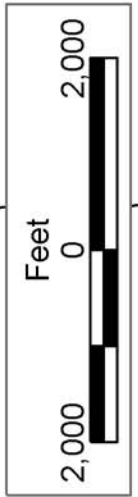
BRETON SOUND AREA

BLOCK BS0017

SL 1227

BLOCK BS0032

P.O.B.
X=2,635,350.00
Y=337,080.00



TRACT 36547 - Lafourche Parish, Louisiana

All of the lands now or formerly constituting the beds and bottoms of all water bodies of every nature and description the title of which vests in the State of Louisiana, together with all islands arising therein and other lands formed by accretion or by reliction, where allowed by law, excepting tax adjudicated lands, and not presently under mineral lease on August 11, 2004, situated in Lafourche Parish, Louisiana, and more particularly described as follows: Beginning at a point having Coordinates of X = 2,235,972.39 and Y = 342,457.89, said point being the Northwest corner of State Lease No. 17890; thence North 742.11 feet to a point having Coordinates of X = 2,235,972.39 and Y = 343,200.00; Thence East 14,497.61 feet to a point having Coordinates of X = 2,250,470.00 and Y = 343,200.00; thence South approximately 8,287 feet, to a point on a Northeastern boundary of State Lease No. 328, as amended; thence on and along the Northeastern and Northwestern boundaries of said State Lease No. 328, as amended, the following courses and distances, to wit: Northwesterly approximately 517 feet; South 54 degrees 26 minutes 06 seconds West approximately 2,779 feet, to a point having Coordinates of X = 2,247,905.28 and Y = 333,715.00; South 54 degrees 26 minutes 06 seconds West approximately 2,769 feet; and Southwesterly approximately 750 feet; thence North 89 degrees 32 minutes 36 seconds West approximately 8,550 feet, to a point having Coordinates of X = 2,236,670.00 and Y = 331,560.00; thence North 5,270.00 feet to a point having Coordinates of X = 2,236,670.00 and Y = 336,830.00; thence East 2,420.00 feet to a point having Coordinates of X = 2,239,090.00 and Y = 336,830.00; thence North 387.21 feet to a point having Coordinates of X = 2,239,090.00 and Y = 337,217.21, said point being on a Southern boundary of said State Lease No. 17890; thence North 37 degrees 12 minutes 10 seconds East 581.98 feet on and along said Southern boundary of said State Lease No. 17890 to a point having Coordinates of X = 2,239,441.89 and Y = 337,680.76, said point being on a Southern boundary of State Lease No. 9637, as amended; thence on and along the Southern, Eastern, Northern and Western boundaries of said State Lease No. 9637, as amended, the following courses and distances, to wit: South 63 degrees 19 minutes 43 seconds East 378.50 feet to a point having Coordinates of X = 2,239,780.12 and Y = 337,510.86; South 64 degrees 55 minutes 46 seconds East 762.67 feet to a point having Coordinates of X = 2,240,470.93 and Y = 337,187.69; South 67 degrees 03 minutes 46 seconds East 970.67 feet to a point having Coordinates of X = 2,241,364.85 and Y = 336,809.40; South 72 degrees 07 minutes 43 seconds East 1,016.91 feet to a point having Coordinates of X = 2,242,332.70 and Y = 336,497.33; South 81 degrees 25 minutes 43 seconds East 360.17 feet to a point having Coordinates of X = 2,242,688.84 and Y = 336,443.65; South 89 degrees 51 minutes 23 seconds East 379.17 feet to a point having Coordinates of X = 2,243,068.01 and Y = 336,442.70; North 81 degrees 38 minutes 15 seconds East 334.23 feet to a point having Coordinates of X = 2,243,398.69 and Y = 336,491.31; North 71 degrees 18 minutes 11 seconds East 329.01 feet to a point having Coordinates of X = 2,243,710.34 and Y = 336,596.78; North 60 degrees 41 minutes 12 seconds East 370.93 feet to a point having Coordinates of X = 2,244,033.77 and Y = 336,778.38; North 56

degrees 20 minutes 00 seconds East 453.95 feet to a point having Coordinates of X = 2,244,411.58 and Y = 337,030.03; North 66 degrees 51 minutes 22 seconds East 363.02 feet to a point having Coordinates of X = 2,244,745.39 and Y = 337,172.71; North 81 degrees 20 minutes 59 seconds East 226.86 feet to a point having Coordinates of X = 2,244,969.67 and Y = 337,206.83; North 16 degrees 17 minutes 59 seconds West 301.97 feet to a point having Coordinates of X = 2,244,884.91 and Y = 337,496.67; North 09 degrees 23 minutes 29 seconds West 464.71 feet to a point having Coordinates of X = 2,244,809.08 and Y = 337,955.15; North 02 degrees 28 minutes 05 seconds West 445.42 feet to a point having Coordinates of X = 2,244,789.90 and Y = 338,400.15; North 06 degrees 20 minutes 55 seconds East 400.54 feet to a point having Coordinates of X = 2,244,834.19 and Y = 338,798.24; North 10 degrees 09 minutes 28 seconds East 493.25 feet to a point having Coordinates of X = 2,244,921.18 and Y = 339,283.76; North 04 degrees 00 minutes 28 seconds East 498.76 feet to a point having Coordinates of X = 2,244,956.04 and Y = 339,781.30; North 01 degrees 35 minutes 29 seconds West 706.89 feet to a point having Coordinates of X = 2,244,936.41 and Y = 340,487.91; North 65 degrees 02 minutes 15 seconds West 433.36 feet to a point having Coordinates of X = 2,244,543.53 and Y = 340,670.80; North 69 degrees 55 minutes 14 seconds West 448.91 feet to a point having Coordinates of X = 2,244,121.91 and Y = 340,824.92; North 79 degrees 38 minutes 37 seconds West 457.92 feet to a point having Coordinates of X = 2,243,671.45 and Y = 340,907.24; North 89 degrees 22 minutes 55 seconds West 421.74 feet to a point having Coordinates of X = 2,243,249.73 and Y = 340,911.79; South 80 degrees 55 minutes 21 seconds West 454.71 feet to a point having Coordinates of X = 2,242,800.72 and Y = 340,840.05; South 70 degrees 03 minutes 29 seconds West 420.00 feet to a point having Coordinates of X = 2,242,405.90 and Y = 340,696.80; South 60 degrees 10 minutes 42 seconds West 471.40 feet to a point having Coordinates of X = 2,241,996.93 and Y = 340,462.38; South 48 degrees 22 minutes 44 seconds West 1,217.05 feet to a point having Coordinates of X = 2,241,087.12 and Y = 339,654.01; South 42 degrees 11 minutes 07 seconds West 916.43 feet to a point having Coordinates of X = 2,240,471.71 and Y = 338,974.96; and South 38 degrees 30 minutes 24 seconds West 874.26 feet to a point having Coordinates of X = 2,239,927.39 and Y = 338,290.82, said point being on the Eastern boundary of said State Lease No. 17890; thence on and along the Eastern and Northern boundaries of said State Lease No. 17890 the following courses and distances, to wit: North 21 degrees 32 minutes 55 seconds West 4,489.00 feet to a point having Coordinates of X = 2,238,278.62 and Y = 342,466.07; and South 89 degrees 47 minutes 48 seconds West 2,306.24 feet to the point of beginning, containing approximately **1,521 acres**, all as more particularly outlined on a plat on file in the Office of Mineral Resources, Department of Natural Resources. All bearings, distances and coordinates are based on Louisiana Coordinate System of 1927, (North or South Zone), where applicable.

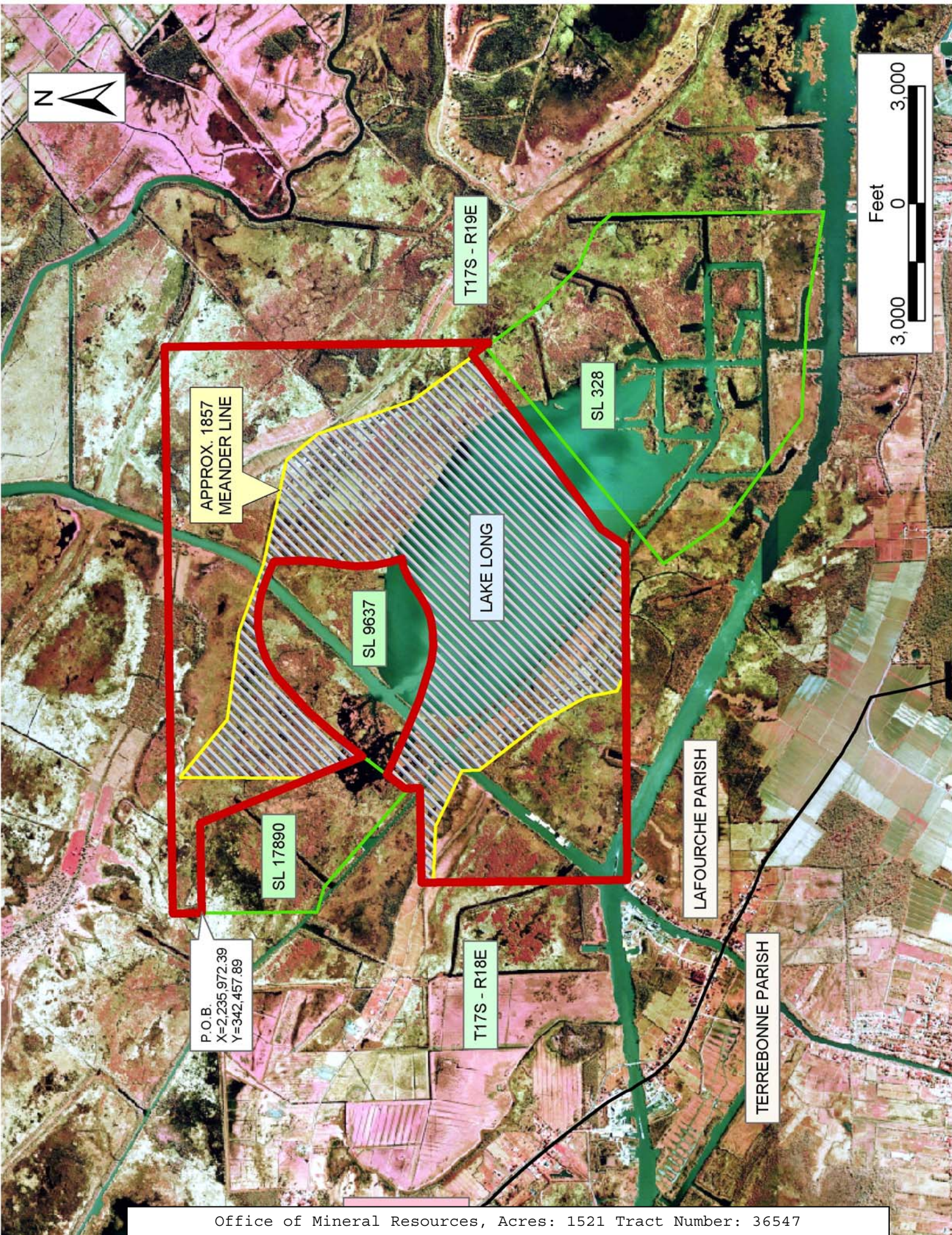
NOTE: The above description of the Tract nominated for lease has been provided and corrected, where required, exclusively by the nomination party. Any mineral lease selected from this Tract and awarded by the

Louisiana State Mineral Board shall be without warranty of any kind, either express, implied, or statutory, including, but not limited to, the implied warranties of merchantability and fitness for a particular purpose. Should the mineral lease awarded by the Louisiana State Mineral Board be subsequently modified, cancelled or abrogated due to the existence of conflicting leases, operating agreements, private claims or other future obligations or conditions which may affect all or any portion of the leased Tract, it shall not relieve the Lessee of the obligation to pay any bonus due thereon to the Louisiana State Mineral Board, nor shall the Louisiana State Mineral Board be obligated to refund any consideration paid by the Lessor prior to such modification, cancellation, or abrogation, including, but not limited to, bonuses, rentals and royalties.

NOTE: The State of Louisiana does hereby reserve, and this lease shall be subject to, the imprescriptible right of surface use in the nature of a servitude in favor of the Department of Natural Resources, including its Offices and Commissions, for the sole purpose of implementing, constructing, servicing and maintaining approved coastal zone management and/or restoration projects. Utilization of any and all rights derived under this lease by the mineral lessee, its agents, successors or assigns, shall not interfere with nor hinder the reasonable surface use by the Department of Natural Resources, its Offices or Commissions, as herein above reserved.

Applicant: Robert A Schroeder, Inc.

Bidder	Cash Payment	Price/Acre	Rental	Oil	Gas	Other



TRACT 36548 - Portion of Block 33, Breton Sound Area, Plaquemines Parish, Louisiana

All of the lands now or formerly constituting the beds and bottoms of all water bodies of every nature and description the title of which vests in the State of Louisiana, together with all islands arising therein and other lands formed by accretion or by reliction, where allowed by law, excepting tax adjudicated lands, and not presently under mineral lease on August 11, 2004, situated in Plaquemines Parish, Louisiana, and more particularly described as follows: Beginning at a point having Coordinates of X = 2,635,350.00 and Y = 322,330.00, said point being the Northwest corner of Block 33; thence East 14,750.00 feet on and along the North line of said Block 33, to a point having Coordinates of X = 2,650,100.00 and Y = 322,330.00, said point being the Northeast corner of said Block 33; thence South 7,375.00 feet on and along the East line of said Block 33, to a point having Coordinates of X = 2,650,100.00 and Y = 314,955.00; thence West 14,750.00 feet to a point having Coordinates of X = 2,635,350.00 and Y = 314,955.00, said point being on the West line of said Block 33; thence North 892.00 feet on and along said West line of said Block 33, to a point having Coordinates of X = 2,635,350.00 and Y = 315,847.00, said point being the Southwest corner of State Lease No. 18078; thence on and along the Southern and Eastern boundaries of said State Lease No. 18078 and on and along the Southeastern and Northeastern boundaries of State Lease No. 17385 the following courses and distances, to wit: East 3,766.00 feet to a point having Coordinates of X = 2,639,116.00 and Y = 315,847.00, said point being the Southeast corner of said State Lease No. 18078; North 2,271.00 feet to a point having Coordinates of X = 2,639,116.00 and Y = 318,118.00; North 39 degrees 52 minutes 03 seconds West 844.35 feet to a point having Coordinates of X = 2,638,574.76 and Y = 318,766.06, said point being on the Southeastern boundary of said State Lease No. 17385; North 50 degrees 07 minutes 57 seconds East 879.76 feet to a point having Coordinates of X = 2,639,250.00 and Y = 319,330.00; and North 56 degrees 18 minutes 36 seconds West 4,687.22 feet to a point having Coordinates of X = 2,635,350.00 and Y = 321,930.00, said point being on said West line of said Block 33; thence North 400.00 feet on and along said West line of said Block 33, to the point of beginning, containing approximately **2,086.42 acres**, all as more particularly outlined on a plat on file in the Office of Mineral Resources, Department of Natural Resources. All bearings, distances and coordinates are based on Louisiana Coordinate System of 1927, (North or South Zone), where applicable.

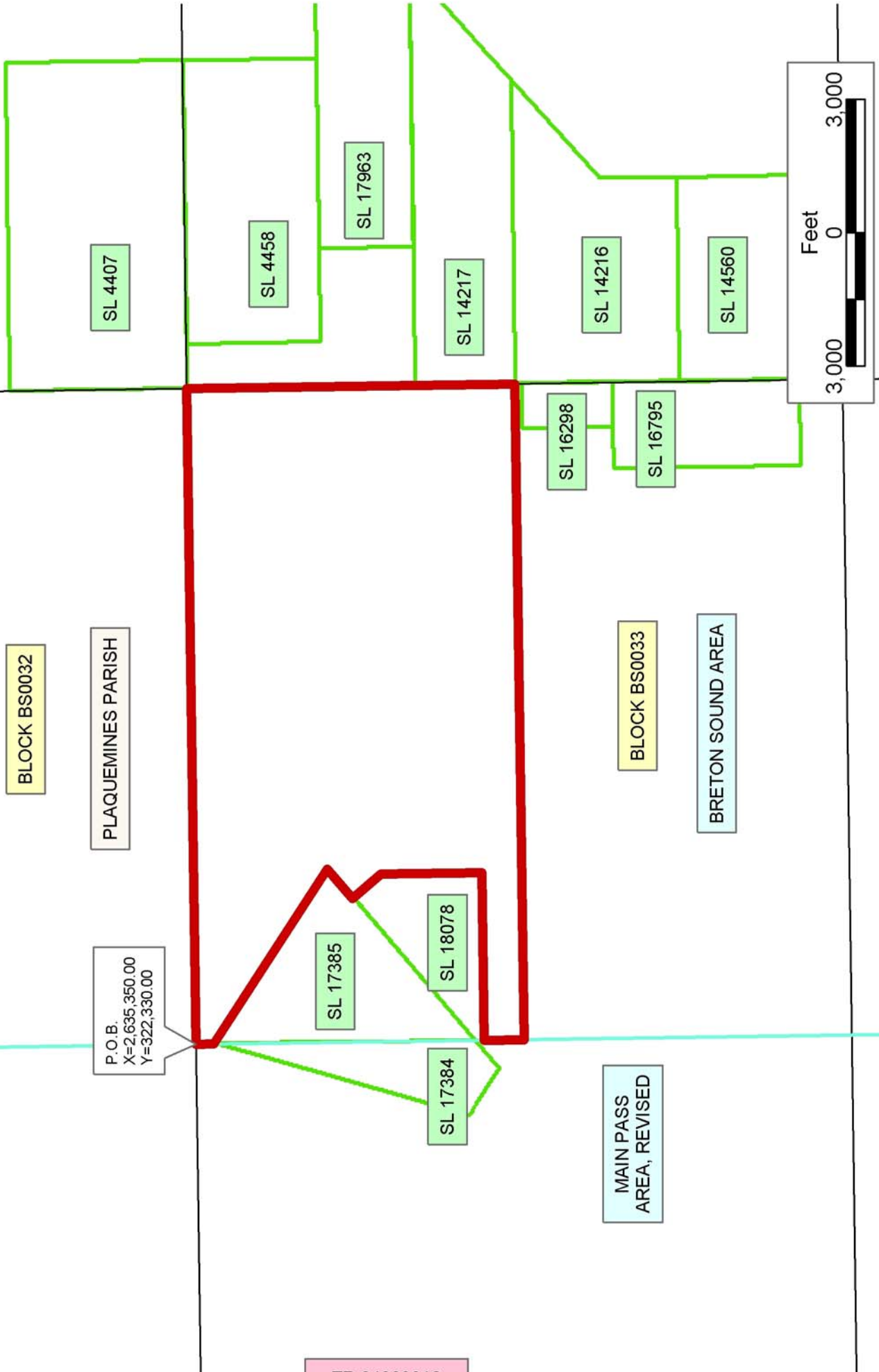
NOTE: The above description of the Tract nominated for lease has been provided and corrected, where required, exclusively by the nomination party. Any mineral lease selected from this Tract and awarded by the Louisiana State Mineral Board shall be without warranty of any kind, either express, implied, or statutory, including, but not limited to, the implied warranties of merchantability and fitness for a particular purpose. Should the mineral lease awarded by the Louisiana State Mineral Board be subsequently modified, cancelled or abrogated due to the existence of conflicting leases, operating agreements, private claims or

other future obligations or conditions which may affect all or any portion of the leased Tract, it shall not relieve the Lessee of the obligation to pay any bonus due thereon to the Louisiana State Mineral Board, nor shall the Louisiana State Mineral Board be obligated to refund any consideration paid by the Lessor prior to such modification, cancellation, or abrogation, including, but not limited to, bonuses, rentals and royalties.

NOTE: The State of Louisiana does hereby reserve, and this lease shall be subject to, the imprescriptible right of surface use in the nature of a servitude in favor of the Department of Natural Resources, including its Offices and Commissions, for the sole purpose of implementing, constructing, servicing and maintaining approved coastal zone management and/or restoration projects. Utilization of any and all rights derived under this lease by the mineral lessee, its agents, successors or assigns, shall not interfere with nor hinder the reasonable surface use by the Department of Natural Resources, its Offices or Commissions, as herein above reserved.

Applicant: Robert A. Schroeder, Inc.

Bidder	Cash Payment	Price/Acre	Rental	Oil	Gas	Other



TRACT 36549 - Terrebonne Parish, Louisiana

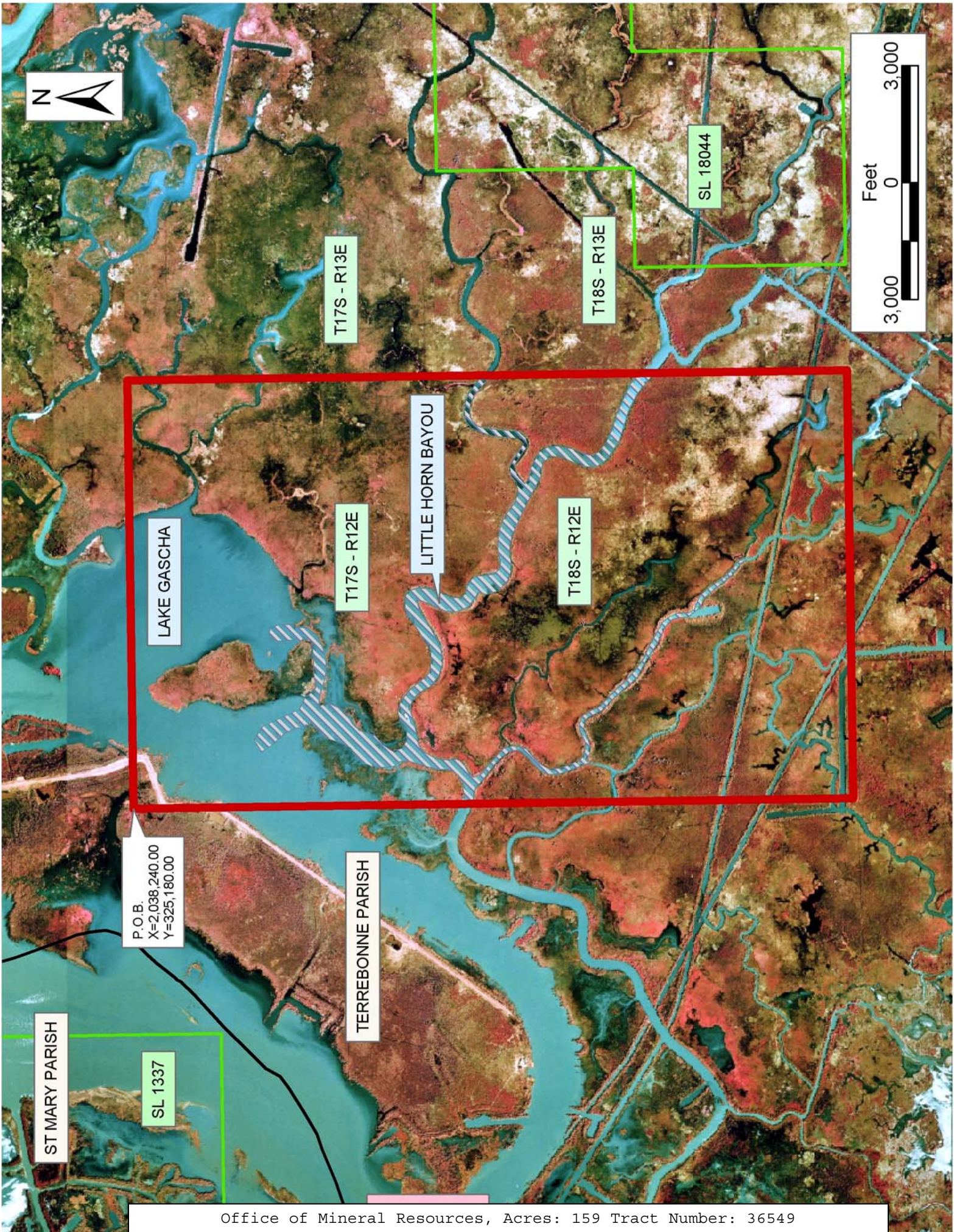
All of the lands now or formerly constituting the beds and bottoms of all water bodies of every nature and description the title of which vests in the State of Louisiana, together with all islands arising therein and other lands formed by accretion or by reliction, where allowed by law, excepting tax adjudicated lands, and not presently under mineral lease on August 11, 2004, situated in Terrebonne Parish, Louisiana, and more particularly described as follows: Beginning at a point having Coordinates of X = 2,038,240.00 and Y = 325,180.00; thence East 11,000.00 feet to a point having Coordinates of X = 2,049,240.00 and Y = 325,180.00; thence South 18,480.00 feet to a point having Coordinates of X = 2,049,240.00 and Y = 306,700.00; thence West 11,000.00 feet to a point having Coordinates of X = 2,038,240.00 and Y = 306,700.00; thence North 18,480.00 feet to the point of beginning, containing approximately **159 acres**, all as more particularly outlined on a plat on file in the Office of Mineral Resources, Department of Natural Resources. All bearings, distances and coordinates are based on Louisiana Coordinate System of 1927, (North or South Zone), where applicable.

NOTE: The above description of the Tract nominated for lease has been provided and corrected, where required, exclusively by the nomination party. Any mineral lease selected from this Tract and awarded by the Louisiana State Mineral Board shall be without warranty of any kind, either express, implied, or statutory, including, but not limited to, the implied warranties of merchantability and fitness for a particular purpose. Should the mineral lease awarded by the Louisiana State Mineral Board be subsequently modified, cancelled or abrogated due to the existence of conflicting leases, operating agreements, private claims or other future obligations or conditions which may affect all or any portion of the leased Tract, it shall not relieve the Lessee of the obligation to pay any bonus due thereon to the Louisiana State Mineral Board, nor shall the Louisiana State Mineral Board be obligated to refund any consideration paid by the Lessor prior to such modification, cancellation, or abrogation, including, but not limited to, bonuses, rentals and royalties.

NOTE: The State of Louisiana does hereby reserve, and this lease shall be subject to, the imprescriptible right of surface use in the nature of a servitude in favor of the Department of Natural Resources, including its Offices and Commissions, for the sole purpose of implementing, constructing, servicing and maintaining approved coastal zone management and/or restoration projects. Utilization of any and all rights derived under this lease by the mineral lessee, its agents, successors or assigns, shall not interfere with nor hinder the reasonable surface use by the Department of Natural Resources, its Offices or Commissions, as herein above reserved.

Applicant: Suncoast Land Services, Inc.

Bidder	Cash Payment	Price/Acre	Rental	Oil	Gas	Other



TRACT 36550 - Portion of Block 33, Breton Sound Area, Plaquemines Parish, Louisiana

All of the lands now or formerly constituting the beds and bottoms of all water bodies of every nature and description the title of which vests in the State of Louisiana, together with all islands arising therein and other lands formed by accretion or by reliction, where allowed by law, excepting tax adjudicated lands, and not presently under mineral lease on August 11, 2004, situated in Plaquemines Parish, Louisiana, and more particularly described as follows: Beginning at a point having Coordinates of X = 2,635,350.00 and Y = 307,580.00, said point being the Southwest corner of Block 33, Breton Sound Area; thence North 7,375.00 feet on and along the West line of said Block 33, to a point having Coordinates of X = 2,635,350.00 and Y = 314,955.00; thence East 14,750.00 feet to a point having Coordinates of X = 2,650,100.00 and Y = 314,955.00, said point being on the East line of said Block 33; thence South 139.46 feet on and along said East line of said Block 33, to a point having Coordinates of X = 2,650,100.00 and Y = 314,815.54, said point being the Northeast corner of State Lease No. 16298, as amended; thence on and along the Northern and Western boundaries of said State Lease No. 16298, as amended, and on and along the Northern, Western and Southern boundaries of State Lease No. 16795, as amended, the following courses and distances, to wit: West 1,022.05 feet to a point having Coordinates of X = 2,649,077.95 and Y = 314,815.54, said point being the Northwest corner of said State Lease No. 16298, as amended; South 2,035.54 feet to a point having Coordinates of X = 2,649,077.95 and Y = 312,780.00, said point being the Southwest corner of said State Lease No. 16298, as amended, said point also being on the Northern boundary of said State Lease No. 16795, as amended; West 927.95 feet to a point having Coordinates of X = 2,648,150.00 and Y = 312,780.00, said point being the Northwest corner of said State Lease No. 16795, as amended; South 4,204.21 feet to a point having Coordinates of X = 2,648,150.00 and Y = 308,575.79, said point being the Southwest corner of said State Lease No. 16795, as amended; and East 1,950.00 feet to a point having Coordinates of X = 2,650,100.00 and Y = 308,575.79, said point being the Southeast corner of said State Lease No. 16795, as amended, said point also being on the East line of said Block 33; thence South 995.79 feet on and along said East line of said Block 33, to a point having Coordinates of X = 2,650,100.00 and Y = 307,580.00, said point being the Southeast corner of said Block 33; thence West 14,750.00 feet on and along the South line of said Block 33, to the point of beginning, containing approximately **2,261.31 acres**, all as more particularly outlined on a plat on file in the Office of Mineral Resources, Department of Natural Resources. All bearings, distances and coordinates are based on Louisiana Coordinate System of 1927, (North or South Zone), where applicable.

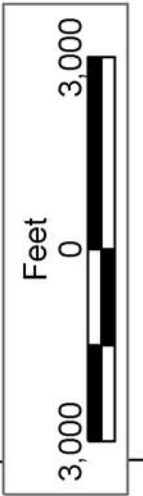
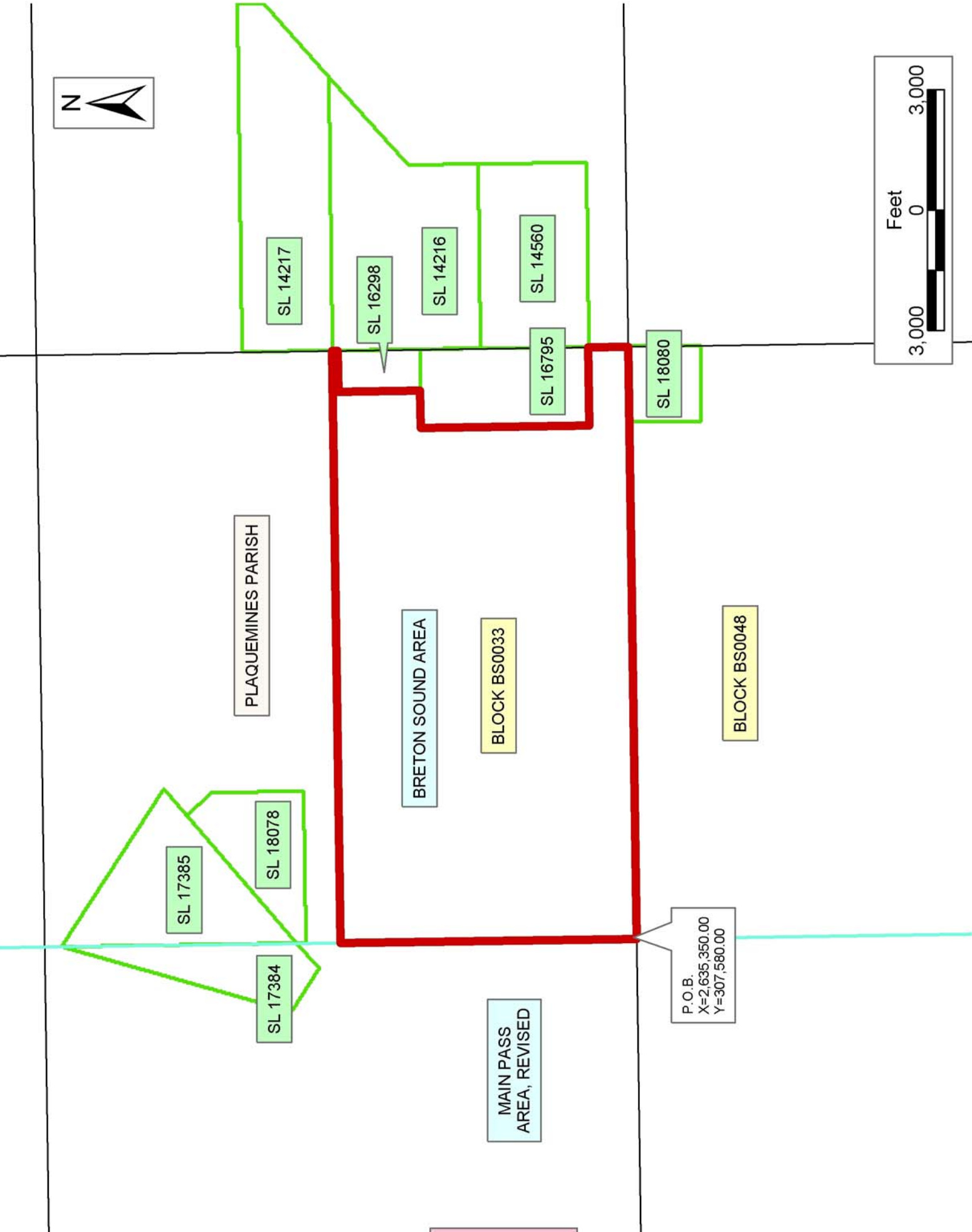
NOTE: The above description of the Tract nominated for lease has been provided and corrected, where required, exclusively by the nomination party. Any mineral lease selected from this Tract and awarded by the Louisiana State Mineral Board shall be without warranty of any kind, either express, implied, or statutory, including, but not limited to, the

implied warranties of merchantability and fitness for a particular purpose. Should the mineral lease awarded by the Louisiana State Mineral Board be subsequently modified, cancelled or abrogated due to the existence of conflicting leases, operating agreements, private claims or other future obligations or conditions which may affect all or any portion of the leased Tract, it shall not relieve the Lessee of the obligation to pay any bonus due thereon to the Louisiana State Mineral Board, nor shall the Louisiana State Mineral Board be obligated to refund any consideration paid by the Lessor prior to such modification, cancellation, or abrogation, including, but not limited to, bonuses, rentals and royalties.

NOTE: The State of Louisiana does hereby reserve, and this lease shall be subject to, the imprescriptible right of surface use in the nature of a servitude in favor of the Department of Natural Resources, including its Offices and Commissions, for the sole purpose of implementing, constructing, servicing and maintaining approved coastal zone management and/or restoration projects. Utilization of any and all rights derived under this lease by the mineral lessee, its agents, successors or assigns, shall not interfere with nor hinder the reasonable surface use by the Department of Natural Resources, its Offices or Commissions, as herein above reserved.

Applicant: Robert A. Schroeder, Inc.

Bidder	Cash Payment	Price/Acre	Rental	Oil	Gas	Other



P.O.B.
X=2,635,350.00
Y=307,580.00

TRACT 36551 - Terrebonne Parish, Louisiana

All of the lands now or formerly constituting the beds and bottoms of all water bodies of every nature and description the title of which vests in the State of Louisiana, together with all islands arising therein and other lands formed by accretion or by reliction, where allowed by law, excepting tax adjudicated lands, and not presently under mineral lease on August 11, 2004, situated in Terrebonne Parish, Louisiana, and more particularly described as follows: Beginning at a point having Coordinates of X = 2,049,240.00 and Y = 317,170.00; thence East 5,264.40 feet to the Northwest corner of State Lease No. 18044 having Coordinates of X = 2,054,504.40 and Y = 317,170.00; thence along said State Lease No. 18044 the following: South 5,065.00 feet to a point having Coordinates of X = 2,054,504.40 and Y = 312,105.00, thence West 2,549.40 feet to a point having Coordinates of X = 2,051,955.00 and Y = 312,105.00, thence South 5,405.00 feet to a point having Coordinates of X = 2,051,955.00 and Y = 306,700.00, thence East 5,545.00 feet to a point having Coordinates of X = 2,057,500.00 and Y = 306,700.00, thence North 5,405.00 feet to a point having Coordinates of X = 2,057,500.00 and Y = 312,105.00, thence East 2,740.00 feet to a point having Coordinates of X = 2,060,240.00 and Y = 312,105.00; thence South 13,288.24 feet to a point on the North line of State Lease No. 17210 having Coordinates X = 2,060,240.00 and Y = 298,816.76; thence South 89 degrees 18 minutes 50 seconds West 10,585.76 feet along the North line of said State Lease No. 17210 to its Northwest corner and the Northeast corner of State Lease No. 17531 having Coordinates X = 2,049,655.00 and Y = 298,690.00; thence West 106.22 feet along the North line of said State Lease No. 17531 to a point having Coordinates of X = 2,049,548.78 and Y = 298,690.00; thence North 2,382.84 feet to a point having Coordinates of X = 2,049,548.78 and Y = 301,072.84; thence West 308.79 feet to a point having Coordinates of X = 2,049,240.00 and Y = 301,072.84; thence North 16,097.16 feet to the point of beginning, containing approximately **36 acres**, all as more particularly outlined on a plat on file in the Office of Mineral Resources, Department of Natural Resources. All bearings, distances and coordinates are based on Louisiana Coordinate System of 1927, (North or South Zone), where applicable.

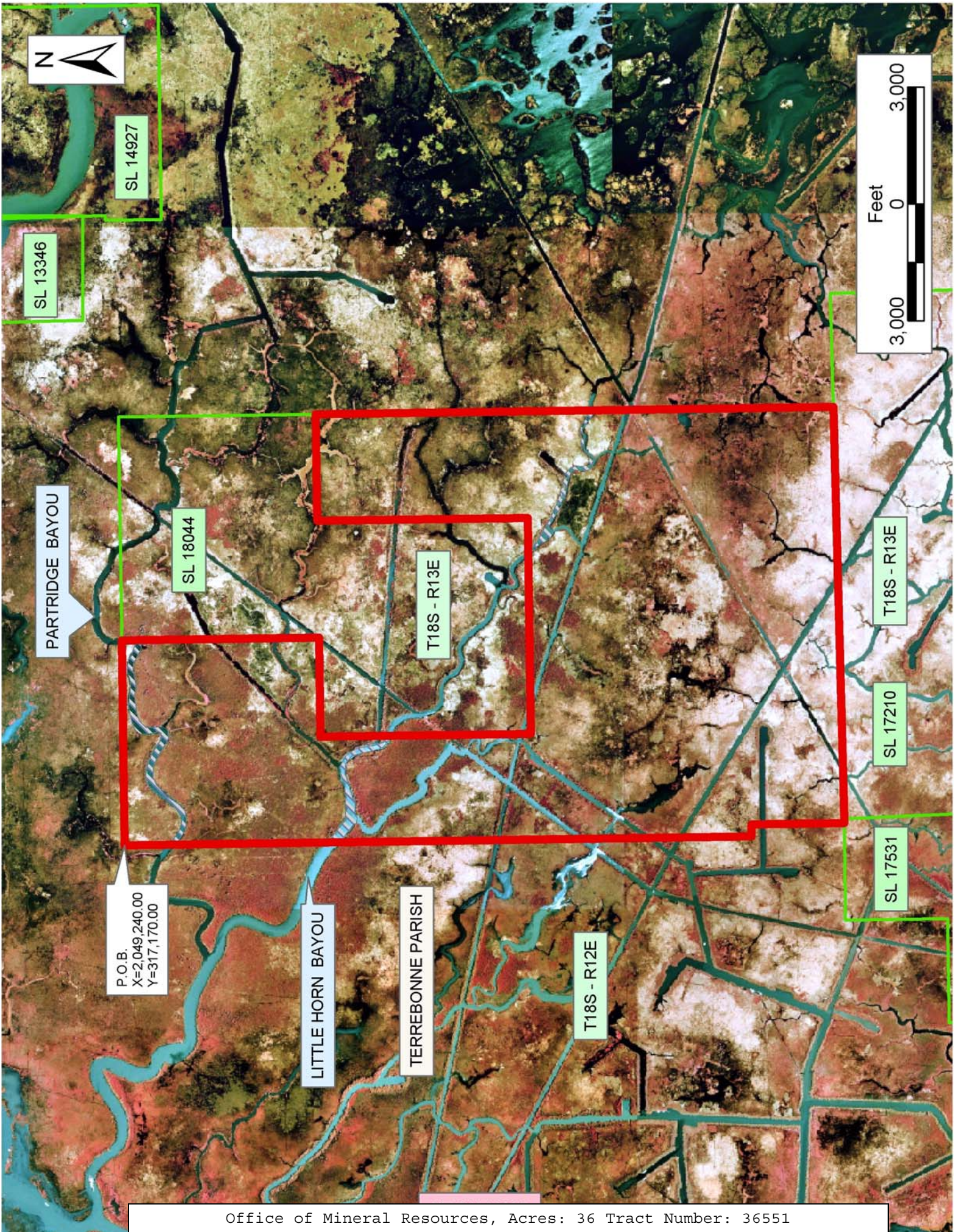
NOTE: The above description of the Tract nominated for lease has been provided and corrected, where required, exclusively by the nomination party. Any mineral lease selected from this Tract and awarded by the Louisiana State Mineral Board shall be without warranty of any kind, either express, implied, or statutory, including, but not limited to, the implied warranties of merchantability and fitness for a particular purpose. Should the mineral lease awarded by the Louisiana State Mineral Board be subsequently modified, cancelled or abrogated due to the existence of conflicting leases, operating agreements, private claims or other future obligations or conditions which may affect all or any portion of the leased Tract, it shall not relieve the Lessee of the obligation to pay any bonus due thereon to the Louisiana State Mineral Board, nor shall the Louisiana State Mineral Board be obligated to refund any consideration

paid by the Lessor prior to such modification, cancellation, or abrogation, including, but not limited to, bonuses, rentals and royalties.

NOTE: The State of Louisiana does hereby reserve, and this lease shall be subject to, the imprescriptible right of surface use in the nature of a servitude in favor of the Department of Natural Resources, including its Offices and Commissions, for the sole purpose of implementing, constructing, servicing and maintaining approved coastal zone management and/or restoration projects. Utilization of any and all rights derived under this lease by the mineral lessee, its agents, successors or assigns, shall not interfere with nor hinder the reasonable surface use by the Department of Natural Resources, its Offices or Commissions, as herein above reserved.

Applicant: Suncoast Land Services, Inc.

Bidder	Cash Payment	Price/Acre	Rental	Oil	Gas	Other



SL 13346

SL 14927

PARTRIDGE BAYOU

SL 18044

T18S - R13E

T18S - R13E

SL 17210

SL 17531

P.O.B.
X=2,049,240.00
Y=317,170.00

LITTLE HORN BAYOU

TERREBONNE PARISH

T18S - R12E

