

TRACT 36532 - Plaquemines and St. Bernard Parishes, Louisiana

All of the lands now or formerly constituting the beds and bottoms of all water bodies of every nature and description the title of which vests in the State of Louisiana, together with all islands arising therein and other lands formed by accretion or by reliction, where allowed by law, excepting tax adjudicated lands, and not presently under mineral lease on August 11, 2004, situated in Plaquemines and St. Bernard Parishes, Louisiana, and more particularly described as follows: Beginning at a point having Coordinates of X = 2,494,542.00 and Y = 405,184.00; thence East 16,856.44 feet to a point having Coordinates of X = 2,511,398.44 and Y = 405,184.00; thence South 01 degrees 44 minutes 56 seconds East 8,569.99 feet to a point having Coordinates of X = 2,511,660.00 and Y = 396,618.00; thence South approximately 4,463 feet to a point on the North line of State Lease No. 335, as amended, having a Coordinate of X = 2,511,660.00; thence Easterly along the North line of said State Lease No. 335 to a point of intersection with a North South line having a Coordinate of X = 2,494,542.00; thence North approximately 13,263 feet to the point of beginning, **LESS AND EXCEPT** any portion of State Lease No. 335, as amended, that may lie within the above described tract, containing approximately **408 acres**, all as more particularly outlined on a plat on file in the Office of Mineral Resources, Department of Natural Resources. All bearings, distances and coordinates are based on Louisiana Coordinate System of 1927, (North or South Zone), where applicable.

NOTE: The above description of the Tract nominated for lease has been provided and corrected, where required, exclusively by the nomination party. Any mineral lease selected from this Tract and awarded by the Louisiana State Mineral Board shall be without warranty of any kind, either express, implied, or statutory, including, but not limited to, the implied warranties of merchantability and fitness for a particular purpose. Should the mineral lease awarded by the Louisiana State Mineral Board be subsequently modified, cancelled or abrogated due to the existence of conflicting leases, operating agreements, private claims or other future obligations or conditions which may affect all or any portion of the leased Tract, it shall not relieve the Lessee of the obligation to pay any bonus due thereon to the Louisiana State Mineral Board, nor shall the Louisiana State Mineral Board be obligated to refund any consideration paid by the Lessor prior to such modification, cancellation, or abrogation, including, but not limited to, bonuses, rentals and royalties.

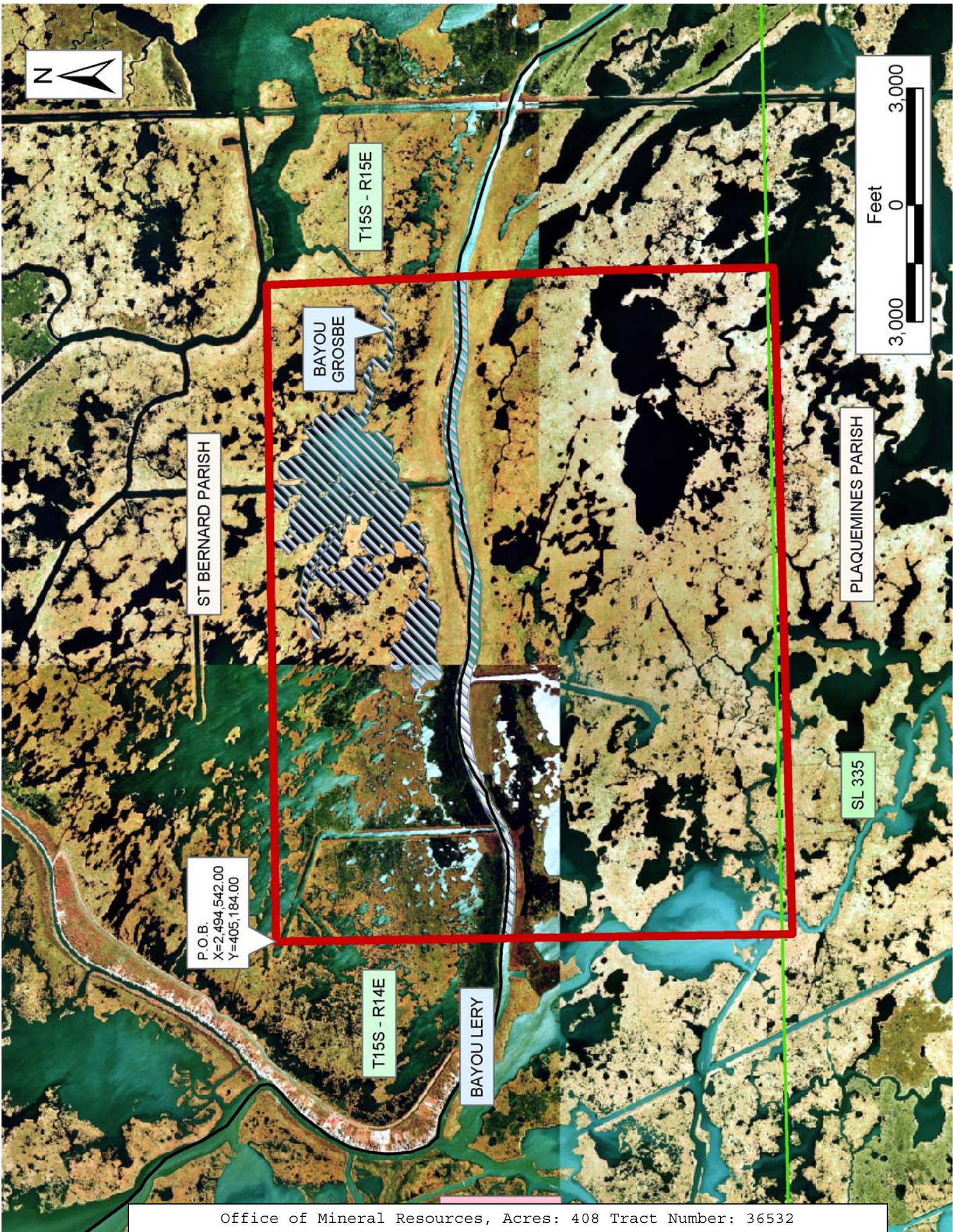
NOTE: The State of Louisiana does hereby reserve, and this lease shall be subject to, the imprescriptible right of surface use in the nature of a servitude in favor of the Department of Natural Resources, including its Offices and Commissions, for the sole purpose of implementing, constructing, servicing and maintaining approved coastal zone management and/or restoration projects. Utilization of any and all rights derived under this lease by the mineral lessee, its agents, successors or assigns, shall not interfere with nor hinder the reasonable surface use by the

Department of Natural Resources, its Offices or Commissions, as herein above reserved.

NOTE: The Department of Wildlife and Fisheries has designated certain areas in the coastal waters of the State of Louisiana as Oyster Seed Bed Areas. The exact location of those Seed Bed Areas must be obtained from the Department of Wildlife and Fisheries and any work done under a mineral lease from the State of Louisiana may necessarily be conducted in conformity with the rules and regulations promulgated by the said Department of Wildlife and Fisheries for Oyster Seed Bed Areas.

Applicant: Fidelity Fuels

Bidder	Cash Payment	Price/Acre	Rental	Oil	Gas	Other



T15S - R15E

BAYOU GROSBE

ST BERNARD PARISH

PLAQUEMINES PARISH

SL 335

P.O.B.
X=2,494,542.00
Y=405,184.00

T15S - R14E

BAYOU LERY



TRACT 36533 - Plaquemines and St. Bernard Parishes, Louisiana

All of the lands now or formerly constituting the beds and bottoms of all water bodies of every nature and description the title of which vests in the State of Louisiana, together with all islands arising therein and other lands formed by accretion or by reliction, where allowed by law, excepting tax adjudicated lands, and not presently under mineral lease on August 11, 2004, situated in Plaquemines and St. Bernard Parishes, Louisiana, and more particularly described as follows: Beginning at a point having Coordinates of X = 2,525,202.00 and Y = 396,618.00; thence South 15,162.77 feet to a point on the Northern boundary of State Lease No. 16458, as amended, having Coordinates of X = 2,525,202.00 and Y = 381,455.23; thence along the boundary of said State Lease No. 16458 the following courses: North 34 degrees 00 minutes 27 seconds West 73.31 feet, North 38 degrees 31 minutes 34 seconds West 200.68 feet, North 42 degrees 34 minutes 50 seconds West 201.00 feet, North 46 degrees 12 minutes 07 seconds West 202.28 feet, North 49 degrees 47 minutes 49 seconds West 202.94 feet, North 53 degrees 04 minutes 01 second West 181.40 feet, North 56 degrees 18 minutes 36 seconds West 180.28 feet, North 61 degrees 00 minutes 27 seconds West 179.49 feet, North 66 degrees 10 minutes 05 seconds West 178.19 feet, North 71 degrees 33 minutes 54 seconds West 126.49 feet, North 75 degrees 25 minutes 33 seconds West 51.66 feet, North 78 degrees 59 minutes 10 seconds West 151.80 feet, North 85 degrees 06 minutes 42 seconds West 152.55 feet, South 88 degrees 30 minutes 09 seconds West 153.05 feet, South 82 degrees 30 minutes 15 seconds West 153.31 feet, South 75 degrees 57 minutes 50 seconds West 152.55 feet, South 69 degrees 46 minutes 31 seconds West 80.99 feet, South 66 degrees 53 minutes 37 seconds West 81.54 feet, South 62 degrees 28 minutes 29 seconds West 80.06 feet, South 57 degrees 05 minutes 41 seconds West 80.99 feet, South 52 degrees 33 minutes 41 seconds West 80.60 feet, South 47 degrees 12 minutes 09 seconds West 73.59 feet, South 42 degrees 16 minutes 25 seconds West 74.33 feet, South 39 degrees 30 minutes 28 seconds West 73.88 feet, South 36 degrees 52 minutes 12 seconds West 75.00 feet, South 34 degrees 06 minutes 52 seconds West 74.89 feet, South 33 degrees 05 minutes 05 seconds West 78.77 feet, and South 31 degrees 27 minutes 44 seconds West 41.60 feet to its Northwest corner and a point on the East boundary of State Lease No. 335, as amended, thence along the boundary of said State Lease No. 335 the following courses: Northerly and Westerly to the point of intersection with a North South line having a Coordinate of X = 2,511,660.00; thence North approximately 4,463 feet to a point having Coordinates of X = 2,511,660.00 and Y = 396,618.00; thence East 13,542.00 feet to the point of beginning, **LESS AND EXCEPT** any portion of State Lease No. 335, as amended, and State Lease No. 16458, as amended, that may lie within the above described tract, containing approximately **366 acres**, all as more particularly outlined on a plat on file in the Office of Mineral Resources, Department of Natural Resources. All bearings, distances and coordinates are based on Louisiana Coordinate System of 1927, (North or South Zone), where applicable.

NOTE: The above description of the Tract nominated for lease has been provided and corrected, where required, exclusively by the nomination party. Any mineral lease selected from this Tract and awarded by the Louisiana State Mineral Board shall be without warranty of any kind, either express, implied, or statutory, including, but not limited to, the implied warranties of merchantability and fitness for a particular purpose. Should the mineral lease awarded by the Louisiana State Mineral Board be subsequently modified, cancelled or abrogated due to the existence of conflicting leases, operating agreements, private claims or other future obligations or conditions which may affect all or any portion of the leased Tract, it shall not relieve the Lessee of the obligation to pay any bonus due thereon to the Louisiana State Mineral Board, nor shall the Louisiana State Mineral Board be obligated to refund any consideration paid by the Lessor prior to such modification, cancellation, or abrogation, including, but not limited to, bonuses, rentals and royalties.

NOTE: The State of Louisiana does hereby reserve, and this lease shall be subject to, the imprescriptible right of surface use in the nature of a servitude in favor of the Department of Natural Resources, including its Offices and Commissions, for the sole purpose of implementing, constructing, servicing and maintaining approved coastal zone management and/or restoration projects. Utilization of any and all rights derived under this lease by the mineral lessee, its agents, successors or assigns, shall not interfere with nor hinder the reasonable surface use by the Department of Natural Resources, its Offices or Commissions, as herein above reserved.

NOTE: The Department of Wildlife and Fisheries has designated certain areas in the coastal waters of the State of Louisiana as Oyster Seed Bed Areas. The exact location of those Seed Bed Areas must be obtained from the Department of Wildlife and Fisheries and any work done under a mineral lease from the State of Louisiana may necessarily be conducted in conformity with the rules and regulations promulgated by the said Department of Wildlife and Fisheries for Oyster Seed Bed Areas.

Applicant: Fidelity Fuels

Bidder	Cash Payment	Price/Acre	Rental	Oil	Gas	Other



P.O.B.
X=2,525,202.00
Y=396,618.00

PETAIN
LAGOON

SL 16458

SL 17107

LAKE AMEDEE

ST BERNARD PARISH

BAYOU LERY

PLAQUEMINES PARISH

SL 335

T15S - R15E

BAYOU LERY

TRACT 36534 - Cameron Parish, Louisiana

All of the lands now or formerly constituting the beds and bottoms of all water bodies of every nature and description the title of which vests in the State of Louisiana, together with all islands arising therein and other lands formed by accretion or by reliction, where allowed by law, excepting tax adjudicated lands, and not presently under mineral lease on August 11, 2004, situated in Cameron Parish, Louisiana, and more particularly described as follows: Beginning at a point having Coordinates of X = 1,255,387.33 and Y = 403,241.18; Thence North 89 degrees 04 minutes 17 seconds East 18,002.36 feet to a point having Coordinates of X = 1,273,387.33 and Y = 403,532.91; Thence South 1,330.28 feet to a point on the Coastline as defined by the report of the Special Master and set forth in the judgment decree in June of 1975 by the Supreme Court of the United States in the litigation styled United States v. State of Louisiana, et al No. 9 Original, said point also being the Northeast corner of Block 12, West Cameron Area, Revised, having Coordinates of X = 1,273,387.33 and Y = 402,202.63; Thence along the said Coastline the following courses: Southwesterly on a straight line to a point having Coordinates of X = 1,264,910 and Y = 401,500; Southwesterly on a straight line to a point having Coordinates of X = 1,259,600 and Y = 400,971; Southwesterly on a straight line to the Northwest corner of said Block 12, also being the Northeast corner of Block 13, West Cameron Area, Revised, having Coordinates of X = 1,258,629.28 and Y = 400,836.80; Thence Southwesterly on a straight along said Coastline to a point having Coordinates of X = 1,255,387.33 and Y = 400,388.62; Thence North 2,852.56 feet to the point of beginning, containing approximately **350 acres**, all as more particularly outlined on a plat on file in the Office of Mineral Resources, Department of Natural Resources. All bearings, distances and coordinates are based on Louisiana Coordinate System of 1927, (North or South Zone), where applicable.

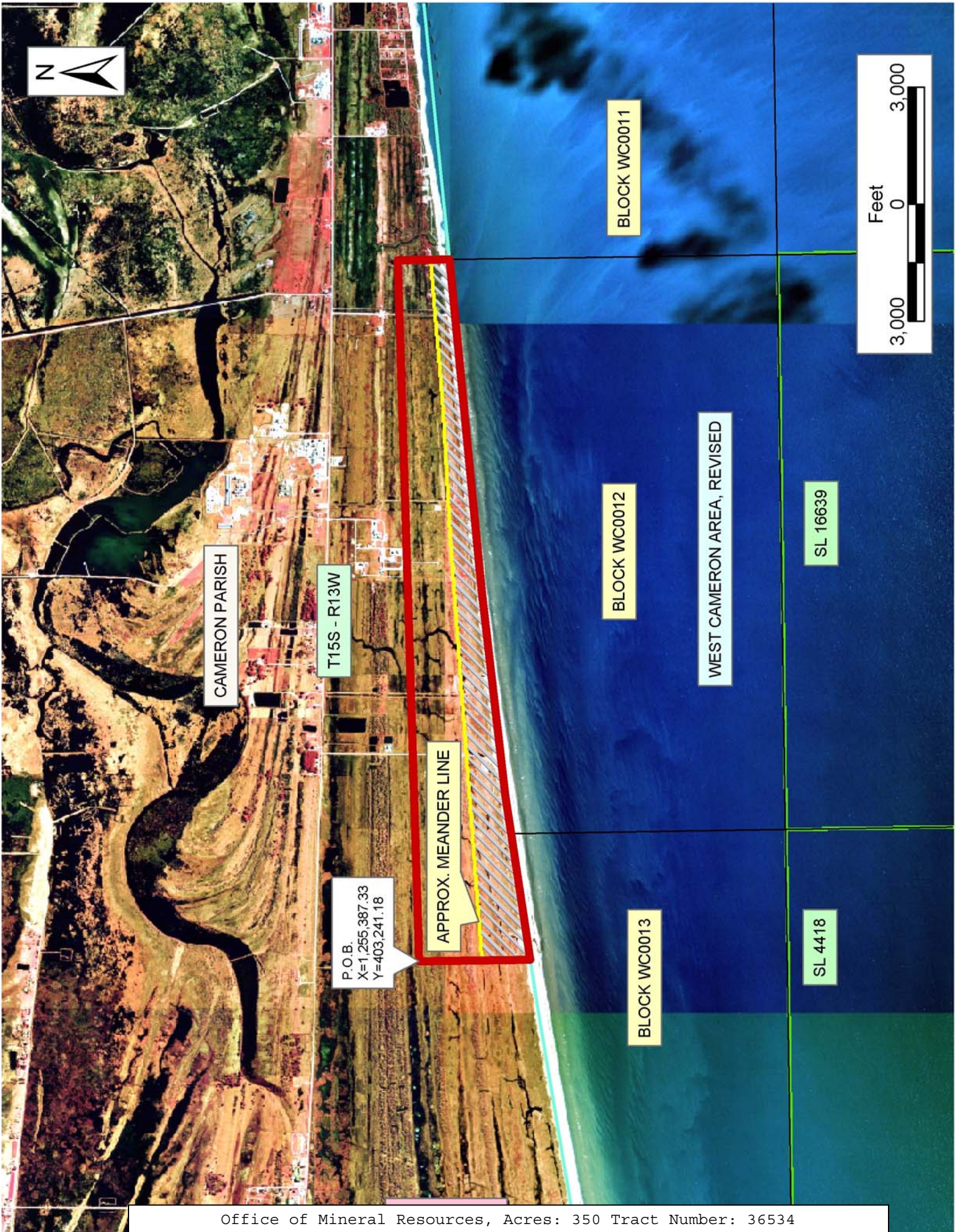
NOTE: The above description of the Tract nominated for lease has been provided and corrected, where required, exclusively by the nomination party. Any mineral lease selected from this Tract and awarded by the Louisiana State Mineral Board shall be without warranty of any kind, either express, implied, or statutory, including, but not limited to, the implied warranties of merchantability and fitness for a particular purpose. Should the mineral lease awarded by the Louisiana State Mineral Board be subsequently modified, cancelled or abrogated due to the existence of conflicting leases, operating agreements, private claims or other future obligations or conditions which may affect all or any portion of the leased Tract, it shall not relieve the Lessee of the obligation to pay any bonus due thereon to the Louisiana State Mineral Board, nor shall the Louisiana State Mineral Board be obligated to refund any consideration paid by the Lessor prior to such modification, cancellation, or abrogation, including, but not limited to, bonuses, rentals and royalties.

NOTE: The State of Louisiana does hereby reserve, and this lease shall be subject to, the imprescriptible right of surface use in the nature of a

servitude in favor of the Department of Natural Resources, including its Offices and Commissions, for the sole purpose of implementing, constructing, servicing and maintaining approved coastal zone management and/or restoration projects. Utilization of any and all rights derived under this lease by the mineral lessee, its agents, successors or assigns, shall not interfere with nor hinder the reasonable surface use by the Department of Natural Resources, its Offices or Commissions, as herein above reserved.

Applicant: Gray Production Company

Bidder	Cash Payment	Price/Acre	Rental	Oil	Gas	Other



TRACT 36535 - Cameron Parish, Louisiana

All of the lands now or formerly constituting the beds and bottoms of all water bodies of every nature and description the title of which vests in the State of Louisiana, together with all islands arising therein and other lands formed by accretion or by reliction, where allowed by law, excepting tax adjudicated lands, and not presently under mineral lease on August 11, 2004, situated in Cameron Parish, Louisiana, and more particularly described as follows: Beginning at a point having Coordinates of X = 1,255,387.33 and Y = 403,241.18; Thence South 2,852.56 feet to a point on the Coastline as defined by the report of the Special Master and set forth in the judgment decree in June of 1975 by the Supreme Court of the United States in the litigation styled United States v. State of Louisiana, et al No. 9 Original, having Coordinates of X = 1,255,387.33 and Y = 400,388.62; Thence along the said Coastline the following courses: Southwesterly on a straight line to a point having Coordinates of X = 1,254,211 and Y = 400,226; Southwesterly on a straight line to a point having Coordinates of X = 1,248,971 and Y = 399,421; Southwesterly on a straight line to the Southeast corner of State Lease No. 16037, as amended, also being the Northeast corner of State Lease No. 14423, as amended, having Coordinates of X = 1,246,209.52 and Y = 398,889.12; Thence along the Eastern, Northern and Western boundaries of said State Lease No. 16037, as amended, the following courses: North 28 degrees 20 minutes 27 seconds East 649.50 feet to a point having Coordinates of X = 1,246,517.85 and Y = 399,460.78; North 31 degrees 47 minutes 03 seconds East 445.95 feet to a point having Coordinates of X = 1,246,752.74 and Y = 399,839.85; North 40 degrees 01 minutes 04 seconds East 384.36 feet to a point having Coordinates of X = 1,246,999.89 and Y = 400,134.20; North 49 degrees 47 minutes 20 seconds East 644.03 feet to a point having Coordinates of X = 1,247,491.71 and Y = 400,549.99; North 35 degrees 54 minutes 38 seconds East 100.67 feet to a point having Coordinates of X = 1,247,550.76 and Y = 400,631.53; North 16 degrees 18 minutes 50 seconds East 188.57 feet to a point having Coordinates of X = 1,247,603.73 and Y = 400,812.51; North 01 degrees 01 minutes 39 seconds West 253.99 feet to its Northeast corner having Coordinates of X = 1,247,599.17 and Y = 401,066.46; South 85 degrees 48 minutes 26 seconds West 2,526.53 feet to its Northwest corner having Coordinates of X = 1,245,079.41 and Y = 400,881.74; South 17 degrees 06 minutes 10 seconds West 96.87 feet to a point having Coordinates of X = 1,245,050.92 and Y = 400,789.15; South 18 degrees 07 minutes 34 seconds West 245.18 feet to a point having Coordinates of X = 1,244,974.64 and Y = 400,556.15; South 11 degrees 02 minutes 21 seconds West 247.51 feet to a point having Coordinates of X = 1,244,927.25 and Y = 400,313.21; South 00 degrees 37 minutes 57 seconds East 125.73 feet to a point having Coordinates of X = 1,244,928.64 and Y = 400,187.49; South 08 degrees 20 minutes 28 seconds East 732.42 feet to a point having Coordinates of X = 1,245,034.89 and Y = 399,462.81; South 11 degrees 41 minutes 22 seconds East 291.85 feet to a point having Coordinates of X = 1,245,094.02 and Y = 399,177.02; South 13 degrees 50 minutes 48 seconds East 494.33 feet to its Southwest corner on said Coastline, also being the Northwest corner of said State Lease No. 14423 having Coordinates of X =

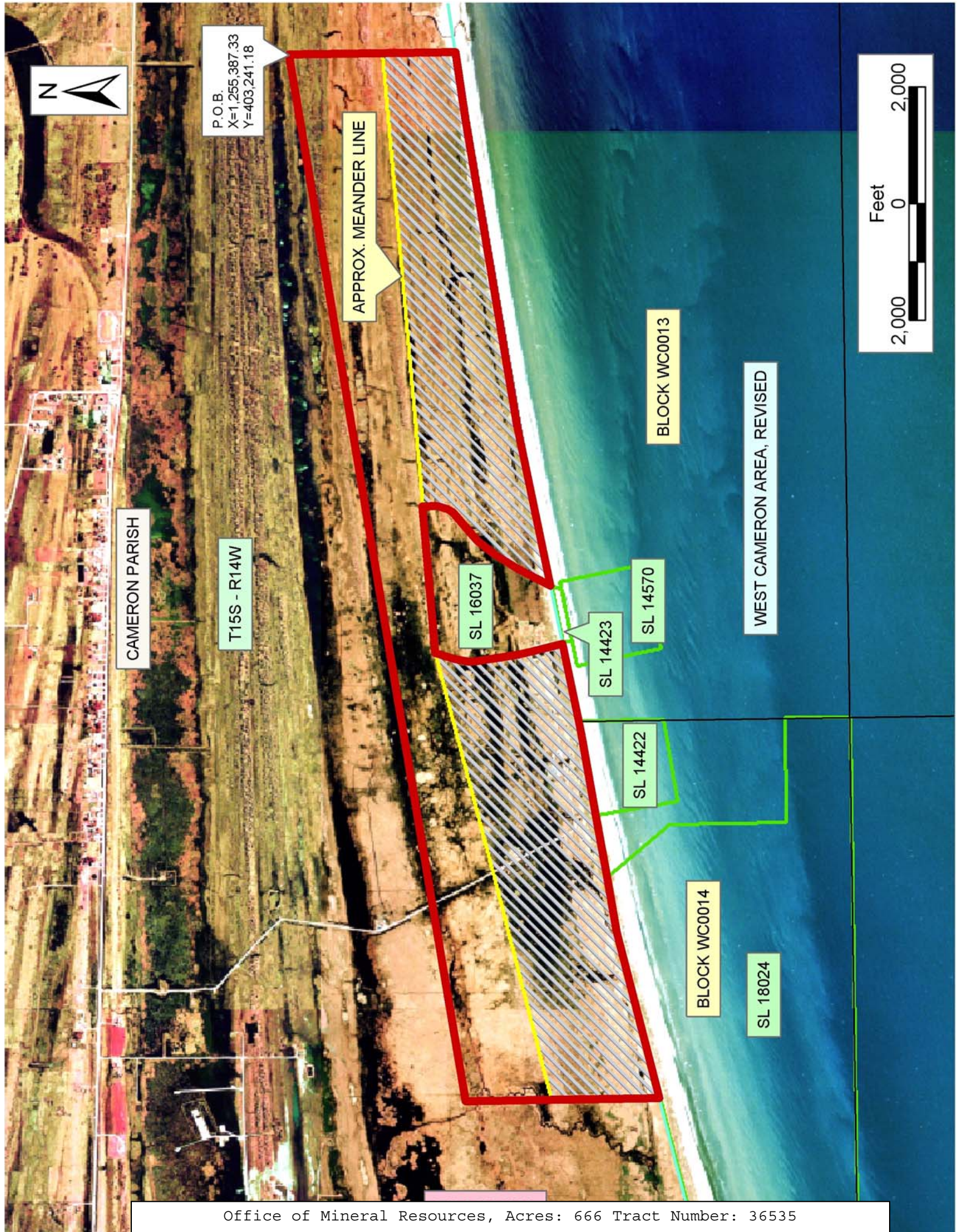
1,245,212.32 and Y = 398,697.06; Thence along the said Coastline the following courses: Southwesterly on a straight line to the Northwest corner of Block 13, West Cameron Area, Revised, also being the Northeast corner of Block 14, West Cameron Area, Revised, and the Northeast corner of State Lease No. 14422, as amended, having Coordinates of X = 1,243,871.23 and Y = 398,438.76; Southwesterly on a straight line to a point having Coordinates of X = 1,243,670 and Y = 398,400; Southwesterly on a straight line to the Northwest corner of said State Lease No. 14422 having Coordinates of X = 1,242,240.49 and Y = 398,165.24; Southwesterly on a straight line to the Northeast corner of State Lease No. 18024 having Coordinates of X = 1,241,182.85 and Y = 397,991.55; Southwesterly on a straight line to a point having Coordinates of X = 1,240,260 and Y = 397,840; Southwesterly on a straight line to a point having Coordinates of X = 1,237,387.33 and Y = 397,152.49; 2 Thence North 3,322.13 feet to a point having Coordinates of X = 1,237,387.33 and Y = 400,474.62; Thence North 81 degrees 15 minutes 44 seconds East 18,211.37 feet to the point of beginning, containing approximately **666 acres**, all as more particularly outlined on a plat on file in the Office of Mineral Resources, Department of Natural Resources. All bearings, distances and coordinates are based on Louisiana Coordinate System of 1927, (North or South Zone), where applicable.

NOTE: The above description of the Tract nominated for lease has been provided and corrected, where required, exclusively by the nomination party. Any mineral lease selected from this Tract and awarded by the Louisiana State Mineral Board shall be without warranty of any kind, either express, implied, or statutory, including, but not limited to, the implied warranties of merchantability and fitness for a particular purpose. Should the mineral lease awarded by the Louisiana State Mineral Board be subsequently modified, cancelled or abrogated due to the existence of conflicting leases, operating agreements, private claims or other future obligations or conditions which may affect all or any portion of the leased Tract, it shall not relieve the Lessee of the obligation to pay any bonus due thereon to the Louisiana State Mineral Board, nor shall the Louisiana State Mineral Board be obligated to refund any consideration paid by the Lessor prior to such modification, cancellation, or abrogation, including, but not limited to, bonuses, rentals and royalties.

NOTE: The State of Louisiana does hereby reserve, and this lease shall be subject to, the imprescriptible right of surface use in the nature of a servitude in favor of the Department of Natural Resources, including its Offices and Commissions, for the sole purpose of implementing, constructing, servicing and maintaining approved coastal zone management and/or restoration projects. Utilization of any and all rights derived under this lease by the mineral lessee, its agents, successors or assigns, shall not interfere with nor hinder the reasonable surface use by the Department of Natural Resources, its Offices or Commissions, as herein above reserved.

Applicant: Gray Production Company

Bidder	Cash Payment	Price/Acre	Rental	Oil	Gas	Other



P.O.B.
X=1,255,387.33
Y=403,241.18

APPROX. MEANDER LINE

CAMERON PARISH

T15S - R14W

SL 16037

SL 14423

SL 14570

BLOCK WC0013

WEST CAMERON AREA, REVISED

SL 14422

BLOCK WC0014

SL 18024



TRACT 36536 - Cameron Parish, Louisiana

All of the lands now or formerly constituting the beds and bottoms of all water bodies of every nature and description the title of which vests in the State of Louisiana, together with all islands arising therein and other lands formed by accretion or by reliction, where allowed by law, excepting tax adjudicated lands, and not presently under mineral lease on August 11, 2004, situated in Cameron Parish, Louisiana, and more particularly described as follows: Beginning at a point having Coordinates of X = 1,220,413.00 and Y = 395,216.24; Thence North 72 degrees 47 minutes 16 seconds East 17,770.16 feet to a point having Coordinates of X = 1,237,387.33 and Y = 400,474.62; Thence South 3,322.13 feet to a point on the Coastline as defined by the report of the Special Master and set forth in the judgment decree in June of 1975 by the Supreme Court of the United States in the litigation styled United States v. State of Louisiana, et al No. 9 Original, having Coordinates of X = 1,237,387.33 and Y = 397,152.49; Thence along the said Coastline the following courses: Southwesterly on a straight line to a point having Coordinates of X = 1,235,668 and Y = 396,741; Southwesterly on a straight line to a point having Coordinates of X = 1,233,256 and Y = 395,989; Southwesterly on a straight line to the Northwest corner of Block 14, West Cameron Area, Revised, also being the Northeast corner of Block 16, West Cameron Area, Revised, and the Northwest corner of State Lease No. 18024 and the Northeast corner of State Lease No. 18025, having Coordinates of X = 1,229,113.18 and Y = 394,587.39; Southwesterly on a straight line to a point having Coordinates of X = 1,228,846 and Y = 394,497; Northwesterly on a straight line to a point having Coordinates of X = 1,228,772 and Y = 394,775; Southwesterly on a straight line to a point having Coordinates of X = 1,226,444 and Y = 393,922; Southwesterly on a straight line to a point having Coordinates of X = 1,225,768 and Y = 393,281; Northwesterly on a straight line to a point having Coordinates of X = 1,225,421 and Y = 393,370; Southwesterly on a straight line to the Northwest corner of said State Lease No. 18025 having Coordinates of X = 1,221,734.16 and Y = 391,679.58; Southwesterly on a straight line to a point having Coordinates of X = 1,220,413.00 and Y = 391,073.83; Thence North 4,142.41 feet to the point of beginning, containing approximately **762 acres**, all as more particularly outlined on a plat on file in the Office of Mineral Resources, Department of Natural Resources. All bearings, distances and coordinates are based on Louisiana Coordinate System of 1927, (North or South Zone), where applicable.

NOTE: The above description of the Tract nominated for lease has been provided and corrected, where required, exclusively by the nomination party. Any mineral lease selected from this Tract and awarded by the Louisiana State Mineral Board shall be without warranty of any kind, either express, implied, or statutory, including, but not limited to, the implied warranties of merchantability and fitness for a particular purpose. Should the mineral lease awarded by the Louisiana State Mineral Board be subsequently modified, cancelled or abrogated due to the existence of conflicting leases, operating agreements, private claims or other future obligations or conditions which may affect all or any portion

of the leased Tract, it shall not relieve the Lessee of the obligation to pay any bonus due thereon to the Louisiana State Mineral Board, nor shall the Louisiana State Mineral Board be obligated to refund any consideration paid by the Lessor prior to such modification, cancellation, or abrogation, including, but not limited to, bonuses, rentals and royalties.

NOTE: The State of Louisiana does hereby reserve, and this lease shall be subject to, the imprescriptible right of surface use in the nature of a servitude in favor of the Department of Natural Resources, including its Offices and Commissions, for the sole purpose of implementing, constructing, servicing and maintaining approved coastal zone management and/or restoration projects. Utilization of any and all rights derived under this lease by the mineral lessee, its agents, successors or assigns, shall not interfere with nor hinder the reasonable surface use by the Department of Natural Resources, its Offices or Commissions, as herein above reserved.

Applicant: Gray Production Company

Bidder	Cash Payment	Price/Acre	Rental	Oil	Gas	Other



CAMERON PARISH

T15S - R14W

P.O.B.
X=1,220,413.00
Y=395,216.24

APPROX.
MEANDER
LINE

BLOCK WC0014

SL 18024

BLOCK WC0017

WEST CAMERON AREA, REVISED

SL 18026

SL 18025

BLOCK WC0016



TRACT 36537 - Plaquemines Parish, Louisiana

All of the lands now or formerly constituting the beds and bottoms of all water bodies of every nature and description the title of which vests in the State of Louisiana, together with all islands arising therein and other lands formed by accretion or by reliction, where allowed by law, excepting tax adjudicated lands, and not presently under mineral lease on August 11, 2004, situated in Plaquemines Parish, Louisiana, and more particularly described as follows: Beginning at a point having Coordinates of X = 2,525,202.00 and Y = 362,300.00; thence West approximately 2,530 feet to a point on the East line of State Lease No. 335, as amended, having a Coordinate of Y = 362,300.00; thence Northerly along the East line of said State Lease No. 335, to the most Northerly Southwest corner of State Lease No. 16458, as amended, having Coordinates of X = 2,522,418.92 and Y = 380,777.79; thence along the Southern boundary of said State Lease No. 16458 the following courses: South 36 degrees 12 minutes 03 seconds East 86.49 feet, South 38 degrees 22 minutes 55 seconds East 128.84 feet, South 41 degrees 02 minutes 07 seconds East 143.18 feet, South 43 degrees 17 minutes 38 seconds East 166.24 feet, South 37 degrees 48 minutes 57 seconds East 84.81 feet, South 37 degrees 00 minutes 09 seconds East 86.40 feet, South 35 degrees 32 minutes 16 seconds East 86.02 feet, South 33 degrees 52 minutes 43 seconds East 84.31 feet, South 32 degrees 34 minutes 27 seconds East 85.44 feet, South 30 degrees 36 minutes 00 seconds East 108.05 feet, South 28 degrees 57 minutes 04 seconds East 107.42 feet, South 27 degrees 58 minutes 46 seconds East 108.71 feet, South 28 degrees 13 minutes 44 seconds East 107.82 feet, South 28 degrees 57 minutes 04 seconds East 107.42 feet, South 31 degrees 11 minutes 06 seconds East 133.26 feet, South 33 degrees 05 minutes 45 seconds East 133.69 feet, South 34 degrees 59 minutes 31 seconds East 134.27 feet, South 36 degrees 26 minutes 21 seconds East 133.00 feet, South 38 degrees 39 minutes 35 seconds East 134.47 feet, South 40 degrees 25 minutes 10 seconds East 239.06 feet, South 42 degrees 37 minutes 41 seconds East 119.60 feet, South 43 degrees 58 minutes 59 seconds East 119.52 feet, South 46 degrees 01 minute 01 second East 119.52 feet, South 46 degrees 49 minutes 27 seconds East 111.07 feet, and South 47 degrees 56 minutes 15 seconds East 82.10 feet to it's most Southerly Southwest corner and the Northwest corner of State Lease No. 17107, as amended, having Coordinates of X = 2,524,194.95 and Y = 378,440.00; thence along the boundary of said State Lease No. 17107 the following courses: South 47 degrees 55 minutes 49 seconds East 28.36 feet, South 50 degrees 27 minutes 27 seconds East 111.52 feet, South 51 degrees 59 minutes 19 seconds East 110.42 feet, South 54 degrees 52 minutes 53 seconds East 111.25 feet, South 56 degrees 18 minutes 36 seconds East 64.90 feet, South 59 degrees 11 minutes 03 seconds East 66.37 feet, South 62 degrees 14 minutes 29 seconds East 64.41 feet, South 66 degrees 54 minutes 54 seconds East 66.31 feet, South 72 degrees 57 minutes 44 seconds East 64.85 feet, South 77 degrees 54 minutes 19 seconds East 57.27 feet, South 83 degrees 59 minutes 28 seconds East 57.31 feet, East 57.00 feet, North 82 degrees 44 minutes 48 seconds East 55.44 feet, North 77 degrees 14 minutes 33 seconds East 54.34 feet, North 63 degrees 01 minute 11 seconds East 123.43 feet, and North 48 degrees 12

minutes 56 seconds East 57.67 feet to a point having Coordinates of X = 2,525,202.00 and Y = 378,168.43; thence South 15,868.43 feet to the point of beginning, **LESS AND EXCEPT** any portion of State Lease No. 335, as amended, State Lease No. 16458, as amended, and State Lease No. 17107, as amended, that may lie within the above described tract, containing approximately **174 acres**, all as more particularly outlined on a plat on file in the Office of Mineral Resources, Department of Natural Resources. All bearings, distances and coordinates are based on Louisiana Coordinate System of 1927, (North or South Zone), where applicable.

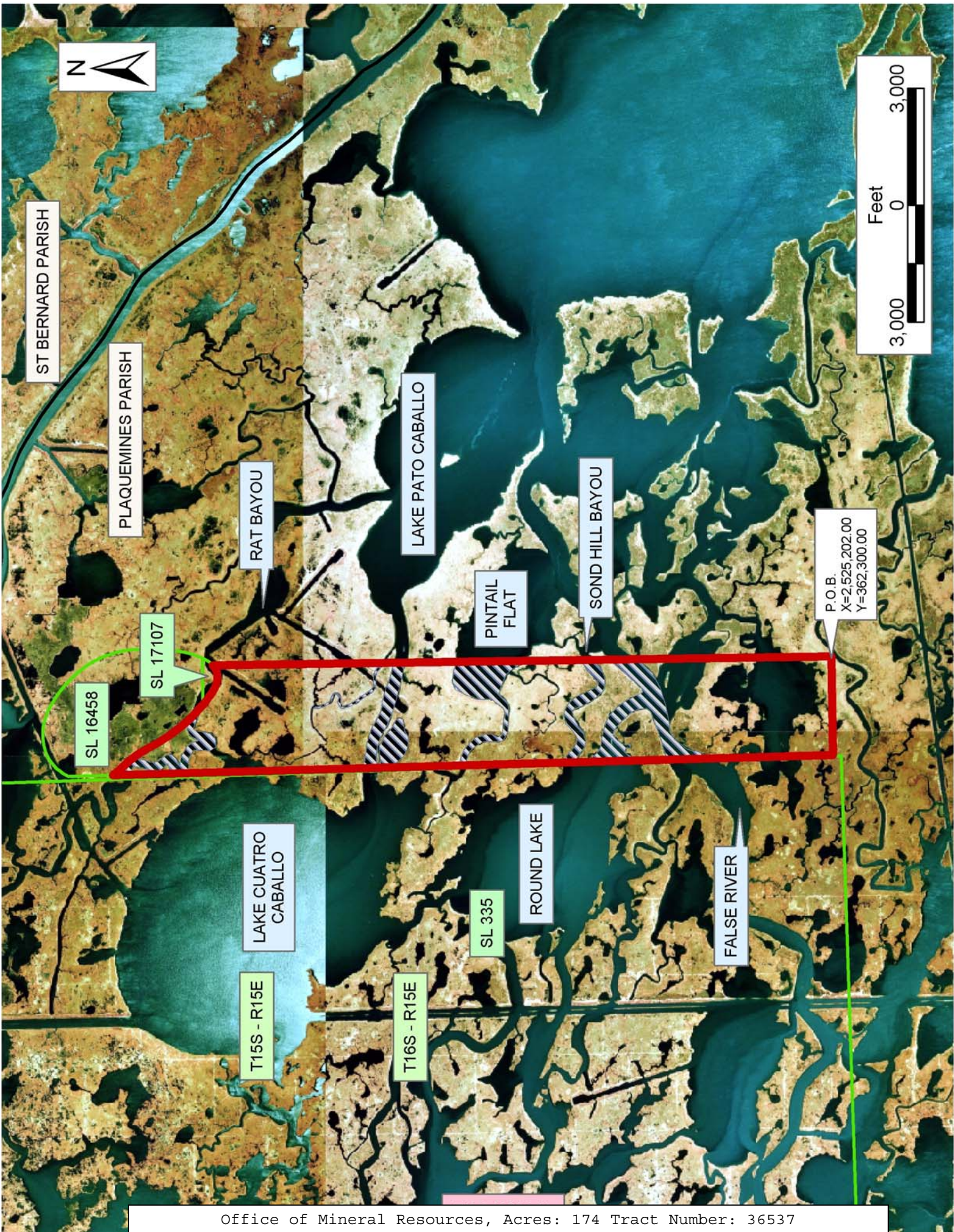
NOTE: The above description of the Tract nominated for lease has been provided and corrected, where required, exclusively by the nomination party. Any mineral lease selected from this Tract and awarded by the Louisiana State Mineral Board shall be without warranty of any kind, either express, implied, or statutory, including, but not limited to, the implied warranties of merchantability and fitness for a particular purpose. Should the mineral lease awarded by the Louisiana State Mineral Board be subsequently modified, cancelled or abrogated due to the existence of conflicting leases, operating agreements, private claims or other future obligations or conditions which may affect all or any portion of the leased Tract, it shall not relieve the Lessee of the obligation to pay any bonus due thereon to the Louisiana State Mineral Board, nor shall the Louisiana State Mineral Board be obligated to refund any consideration paid by the Lessor prior to such modification, cancellation, or abrogation, including, but not limited to, bonuses, rentals and royalties.

NOTE: The State of Louisiana does hereby reserve, and this lease shall be subject to, the imprescriptible right of surface use in the nature of a servitude in favor of the Department of Natural Resources, including its Offices and Commissions, for the sole purpose of implementing, constructing, servicing and maintaining approved coastal zone management and/or restoration projects. Utilization of any and all rights derived under this lease by the mineral lessee, its agents, successors or assigns, shall not interfere with nor hinder the reasonable surface use by the Department of Natural Resources, its Offices or Commissions, as herein above reserved.

NOTE: The Department of Wildlife and Fisheries has designated certain areas in the coastal waters of the State of Louisiana as Oyster Seed Bed Areas. The exact location of those Seed Bed Areas must be obtained from the Department of Wildlife and Fisheries and any work done under a mineral lease from the State of Louisiana may necessarily be conducted in conformity with the rules and regulations promulgated by the said Department of Wildlife and Fisheries for Oyster Seed Bed Areas.

Applicant: Fideilty Fuels

Bidder	Cash Payment	Price/Acre	Rental	Oil	Gas	Other



TRACT 36538 - Cameron Parish, Louisiana

All of the lands now or formerly constituting the beds and bottoms of all water bodies of every nature and description the title of which vests in the State of Louisiana, together with all islands arising therein and other lands formed by accretion or by reliction, where allowed by law, excepting tax adjudicated lands, and not presently under mineral lease on August 11, 2004, situated in Cameron Parish, Louisiana, and more particularly described as follows: Beginning at a point having Coordinates of X = 1,220,413.00 and Y = 395,216.24; Thence South 4,142.41 feet to a point on the Coastline as defined by the report of the Special Master and set forth in the judgment decree in June of 1975 by the Supreme Court of the United States in the litigation styled United States v. State of Louisiana, et al No. 9 Original, having Coordinates of X = 1,220,413.00 and Y = 391,073.83; Thence along the said Coastline the following courses: Southwesterly on a straight line to a point having Coordinates of X = 1,219,698 and Y = 390,746; Southwesterly on a straight line to a point having Coordinates of X = 1,219,065 and Y = 390,227; Southwesterly on a straight line to a point having Coordinates of X = 1,217,536 and Y = 389,445; Northwesterly on a straight line to a point having Coordinates of X = 1,217,089 and Y = 389,513; Southwesterly on a straight line to a point having Coordinates of X = 1,216,582 and Y = 389,216; Southwesterly on a straight line to a point having Coordinates of X = 1,215,615 and Y = 388,263; Southwesterly on a straight line to the Northwest corner of Block 16, West Cameron Area, Revised, also being the Northeast corner of Block 1, Sabine Pass Area, having Coordinates of X = 1,214,355.14 and Y = 387,597.29; Southwesterly on a straight line to a point having Coordinates of X = 1,213,168 and Y = 386,970; Northwesterly on a straight line to a point having Coordinates of X = 1,212,770 and Y = 387,027; Southwesterly on a straight line to a point having Coordinates of X = 1,206,475.69 and Y = 382,013.43; Thence North 4,365.70 feet to a point having Coordinates of X = 1,206,475.69 and Y = 386,379.13; Thence North 57 degrees 37 minutes 22 seconds East 16,502.82 feet to the point of beginning, containing approximately **593 acres**, all as more particularly outlined on a plat on file in the Office of Mineral Resources, Department of Natural Resources. All bearings, distances and coordinates are based on Louisiana Coordinate System of 1927, (North or South Zone), where applicable.

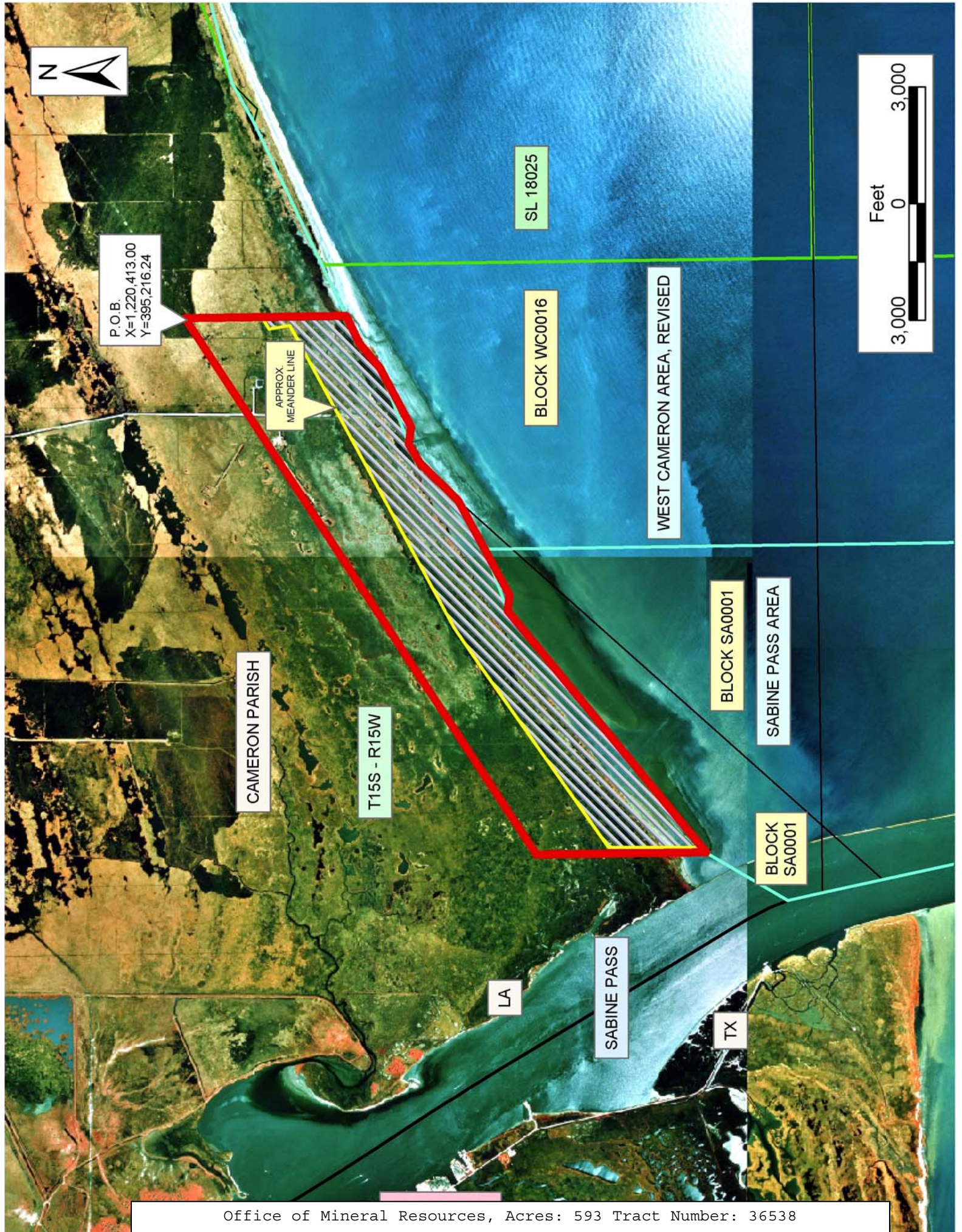
NOTE: The above description of the Tract nominated for lease has been provided and corrected, where required, exclusively by the nomination party. Any mineral lease selected from this Tract and awarded by the Louisiana State Mineral Board shall be without warranty of any kind, either express, implied, or statutory, including, but not limited to, the implied warranties of merchantability and fitness for a particular purpose. Should the mineral lease awarded by the Louisiana State Mineral Board be subsequently modified, cancelled or abrogated due to the existence of conflicting leases, operating agreements, private claims or other future obligations or conditions which may affect all or any portion of the leased Tract, it shall not relieve the Lessee of the obligation to pay any bonus due thereon to the Louisiana State Mineral Board, nor shall

the Louisiana State Mineral Board be obligated to refund any consideration paid by the Lessor prior to such modification, cancellation, or abrogation, including, but not limited to, bonuses, rentals and royalties.

NOTE: The State of Louisiana does hereby reserve, and this lease shall be subject to, the imprescriptible right of surface use in the nature of a servitude in favor of the Department of Natural Resources, including its Offices and Commissions, for the sole purpose of implementing, constructing, servicing and maintaining approved coastal zone management and/or restoration projects. Utilization of any and all rights derived under this lease by the mineral lessee, its agents, successors or assigns, shall not interfere with nor hinder the reasonable surface use by the Department of Natural Resources, its Offices or Commissions, as herein above reserved.

Applicant: Gray Production Company

Bidder	Cash Payment	Price/Acre	Rental	Oil	Gas	Other



P.O.B.
X=1,220,413.00
Y=995,216.24

APPROX.
MEANDER LINE

SL 18025

BLOCK WC0016

WEST CAMERON AREA, REVISED

CAMERON PARISH

T15S - R15W

BLOCK SA0001

SABINE PASS AREA

BLOCK SA0001

LA

SABINE PASS

TX



TRACT 36539 - Portion of Block 16, Breton Sound Area, St. Bernard Parish, Louisiana

All of the lands now or formerly constituting the beds and bottoms of all water bodies of every nature and description the title of which vests in the State of Louisiana, together with all islands arising therein and other lands formed by accretion or by reliction, where allowed by law, excepting tax adjudicated lands, and not presently under mineral lease on August 11, 2004, situated in St. Bernard Parish, Louisiana, and more particularly described as follows: Beginning at a point having Coordinates of X = 2,635,350.00 and Y = 366,580.00, said point being the Northwest corner of Block 16, Breton Sound Area; thence East 14,750.00 feet on and along the North line of said Block 16, to a point having Coordinates of X = 2,650,100.00 and Y = 366,580.00, said point being the Northeast corner of said Block 16; thence South 7,375.00 feet on and along the East line of said Block 16, to a point having Coordinates of X = 2,650,100.00 and Y = 359,205.00; thence West 6,202.67 feet to a point having Coordinates of X = 2,643,897.33 and Y = 359,205.00, said point being the Northernmost Northeast corner of State Lease No. 17303; thence West 1,144.87 feet on and along said Northern boundary of said State Lease No. 17303 to a point having Coordinates of X = 2,642,752.46 and Y = 359,205.00 said point being the Northernmost Northwest corner of said State Lease No. 17303; thence West 7,402.46 feet to a point having Coordinates of X = 2,635,350.00 and Y = 359,205.00, said point being on the West line of said Block 16; thence North 7,375.00 feet on and along said West line of said Block 16, to the point of beginning, containing approximately **2,497.27 acres**, all as more particularly outlined on a plat on file in the Office of Mineral Resources, Department of Natural Resources. All bearings, distances and coordinates are based on Louisiana Coordinate System of 1927, (North or South Zone), where applicable.

NOTE: The above description of the Tract nominated for lease has been provided and corrected, where required, exclusively by the nomination party. Any mineral lease selected from this Tract and awarded by the Louisiana State Mineral Board shall be without warranty of any kind, either express, implied, or statutory, including, but not limited to, the implied warranties of merchantability and fitness for a particular purpose. Should the mineral lease awarded by the Louisiana State Mineral Board be subsequently modified, cancelled or abrogated due to the existence of conflicting leases, operating agreements, private claims or other future obligations or conditions which may affect all or any portion of the leased Tract, it shall not relieve the Lessee of the obligation to pay any bonus due thereon to the Louisiana State Mineral Board, nor shall the Louisiana State Mineral Board be obligated to refund any consideration paid by the Lessor prior to such modification, cancellation, or abrogation, including, but not limited to, bonuses, rentals and royalties.

NOTE: The State of Louisiana does hereby reserve, and this lease shall be subject to, the imprescriptible right of surface use in the nature of a servitude in favor of the Department of Natural Resources, including its

Offices and Commissions, for the sole purpose of implementing, constructing, servicing and maintaining approved coastal zone management and/or restoration projects. Utilization of any and all rights derived under this lease by the mineral lessee, its agents, successors or assigns, shall not interfere with nor hinder the reasonable surface use by the Department of Natural Resources, its Offices or Commissions, as herein above reserved.

NOTE: It appears, according to our records, that a portion of this Tract is located within the restrictive safety fairway area as set out by the Corps of Engineers, U.S. Army and/or the restrictive anchorage area as set out by the U.S. Coast Guard.

Applicant: Robert A. Schroeder, Inc.

Bidder	Cash Payment	Price/Acre	Rental	Oil	Gas	Other



BRETON SOUND AREA

BLOCK BS0015

BLOCK BS0016

ST BERNARD PARISH

PLAQUEMINES PARISH

SL 17303

MAIN PASS AREA, REVISED

P.O.B.
X=2,635,350.00
Y=366,580.00

BLOCK MP0009



TRACT 36540 - Plaquemines Parish, Louisiana

All of the lands now or formerly constituting the beds and bottoms of all water bodies of every nature and description the title of which vests in the State of Louisiana, together with all islands arising therein and other lands formed by accretion or by reliction, where allowed by law, excepting tax adjudicated lands, and not presently under mineral lease on August 11, 2004, situated in Plaquemines Parish, Louisiana, and more particularly described as follows: Beginning at a point having Coordinates of X = 2,506,810.00 and Y = 350,000.00; thence North 2,770.00 feet to the Southwest corner of State Lease No. 18077 having Coordinates of X = 2,506,810.00 and Y = 352,770.00; thence along the boundary of said State Lease No. 18077 the following courses and distances: South 82 degrees 46 minutes 44 seconds East 5,171.02 feet, North 2,420.00 feet and North 82 degrees 38 minutes 04 seconds West 4,960.94 feet to its Northwest corner having Coordinates of X = 2,507,020.00 and Y = 355,176.00; thence North approximately 6,553 feet to a point on the South line of State Lease No. 335, as amended, having a Coordinate of X = 2,507,020.00; thence Easterly along the South line of said State Lease No. 335 to its Southeast corner; thence Northerly approximately 357 feet along the East line of said State Lease No. 335 to a point having a Coordinate of Y = 362,300.00; thence West approximately 2530 feet to a point having Coordinates of X = 2,525,202.00 and Y = 362,300.00; thence South 12,300.00 feet to a point having Coordinates of X = 2,525,202.00 and Y = 350,000.00; thence West 18,392.00 feet to the point of beginning, **LESS AND EXCEPT** any portion of State Lease No. 335, as amended, that may lie within the above described tract, containing approximately **1,731 acres**, all as more particularly outlined on a plat on file in the Office of Mineral Resources, Department of Natural Resources. All bearings, distances and coordinates are based on Louisiana Coordinate System of 1927, (North or South Zone), where applicable.

NOTE: The above description of the Tract nominated for lease has been provided and corrected, where required, exclusively by the nomination party. Any mineral lease selected from this Tract and awarded by the Louisiana State Mineral Board shall be without warranty of any kind, either express, implied, or statutory, including, but not limited to, the implied warranties of merchantability and fitness for a particular purpose. Should the mineral lease awarded by the Louisiana State Mineral Board be subsequently modified, cancelled or abrogated due to the existence of conflicting leases, operating agreements, private claims or other future obligations or conditions which may affect all or any portion of the leased Tract, it shall not relieve the Lessee of the obligation to pay any bonus due thereon to the Louisiana State Mineral Board, nor shall the Louisiana State Mineral Board be obligated to refund any consideration paid by the Lessor prior to such modification, cancellation, or abrogation, including, but not limited to, bonuses, rentals and royalties.

NOTE: The State of Louisiana does hereby reserve, and this lease shall be subject to, the imprescriptible right of surface use in the nature of a

servitude in favor of the Department of Natural Resources, including its Offices and Commissions, for the sole purpose of implementing, constructing, servicing and maintaining approved coastal zone management and/or restoration projects. Utilization of any and all rights derived under this lease by the mineral lessee, its agents, successors or assigns, shall not interfere with nor hinder the reasonable surface use by the Department of Natural Resources, its Offices or Commissions, as herein above reserved.

NOTE: The Department of Wildlife and Fisheries has designated certain areas in the coastal waters of the State of Louisiana as Oyster Seed Bed Areas. The exact location of those Seed Bed Areas must be obtained from the Department of Wildlife and Fisheries and any work done under a mineral lease from the State of Louisiana may necessarily be conducted in conformity with the rules and regulations promulgated by the said Department of Wildlife and Fisheries for Oyster Seed Bed Areas.

Applicant: Fidelity Fuels

Bidder	Cash Payment	Price/Acre	Rental	Oil	Gas	Other



RIVER AUX CHENES

BAY LA FOURCHE



PLAQUEMINES PARISH

LOST FLAT BAY

SL 335

T16S - R15E

SL 18077

P.O.B.
X=2,506,810.00
Y=350,000.00

TRACT 36541 - Plaquemines Parish, Louisiana

All of the lands now or formerly constituting the beds and bottoms of all water bodies of every nature and description the title of which vests in the State of Louisiana, together with all islands arising therein and other lands formed by accretion or by reliction, where allowed by law, excepting tax adjudicated lands, and not presently under mineral lease on August 11, 2004, situated in Plaquemines Parish, Louisiana, and more particularly described as follows: Beginning at a point having Coordinates of X = 2,477,878.00 and Y = 350,000.00; thence West 16,000.00 feet to a point having Coordinates of X = 2,461,878.00 and Y = 350,000.00; thence North 11,862.00 feet to a point having Coordinates of X = 2,461,878.00 and Y = 361,862.00; thence East approximately 14,595 feet to a point on the West line of State Lease No. 335, as amended, having a Coordinate of Y = 361,862.00; thence along the boundary of said State Lease No. 335 the following courses: South approximately 550 feet and East approximately 1397 feet to a point of intersection with a North South line having a Coordinate of X = 2,477,878.00; thence South approximately 11,330 feet to the point of beginning, **LESS AND EXCEPT** any portion of State Lease No. 335 as amended, that may lie within the above described tract, containing approximately **139 acres**, all as more particularly outlined on a plat on file in the Office of Mineral Resources, Department of Natural Resources. All bearings, distances and coordinates are based on Louisiana Coordinate System of 1927, (North or South Zone), where applicable.

NOTE: The above description of the Tract nominated for lease has been provided and corrected, where required, exclusively by the nomination party. Any mineral lease selected from this Tract and awarded by the Louisiana State Mineral Board shall be without warranty of any kind, either express, implied, or statutory, including, but not limited to, the implied warranties of merchantability and fitness for a particular purpose. Should the mineral lease awarded by the Louisiana State Mineral Board be subsequently modified, cancelled or abrogated due to the existence of conflicting leases, operating agreements, private claims or other future obligations or conditions which may affect all or any portion of the leased Tract, it shall not relieve the Lessee of the obligation to pay any bonus due thereon to the Louisiana State Mineral Board, nor shall the Louisiana State Mineral Board be obligated to refund any consideration paid by the Lessor prior to such modification, cancellation, or abrogation, including, but not limited to, bonuses, rentals and royalties.

NOTE: The State of Louisiana does hereby reserve, and this lease shall be subject to, the imprescriptible right of surface use in the nature of a servitude in favor of the Department of Natural Resources, including its Offices and Commissions, for the sole purpose of implementing, constructing, servicing and maintaining approved coastal zone management and/or restoration projects. Utilization of any and all rights derived under this lease by the mineral lessee, its agents, successors or assigns, shall not interfere with nor hinder the reasonable surface use by the

Department of Natural Resources, its Offices or Commissions, as herein above reserved.

NOTE: The Department of Wildlife and Fisheries has designated certain areas in the coastal waters of the State of Louisiana as Oyster Seed Bed Areas. The exact location of those Seed Bed Areas must be obtained from the Department of Wildlife and Fisheries and any work done under a mineral lease from the State of Louisiana may necessarily be conducted in conformity with the rules and regulations promulgated by the said Department of Wildlife and Fisheries for Oyster Seed Bed Areas.

Applicant: Fidelity Fuels

Bidder	Cash Payment	Price/Acre	Rental	Oil	Gas	Other

