

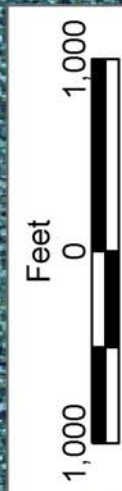
TRACT 36522 - LaSalle and Rapides Parishes, Louisiana

All of the lands now or formerly constituting the beds and bottoms of all water bodies of every nature and description the title of which vests in the State of Louisiana, together with all islands arising therein and other lands formed by accretion or by reliction, where allowed by law, excepting tax adjudicated lands, and not presently under mineral lease on August 11, 2004, situated in LaSalle and Rapides Parishes, Louisiana, and more particularly described as follows: Beginning at a point in Township 5 North, Range 3 East, Rapides Parish Louisiana having Coordinates of X = 2,105,748.00 and Y = 273,246.00; thence East 5,280.00 feet to a point having Coordinates of X = 2,111,028.00 and Y = 273,246.00; thence South 2,640 feet to a point having Coordinates of X = 2,111,028.00 and Y = 270,606.00; thence West 5,280 feet to a point having Coordinates of X = 2,105,748.00 and Y = 273,246.00; thence North 2,640 feet to the point of beginning, containing approximately **6.88 acres**, all as more particularly outlined on a plat on file in the Office of Mineral Resources, Department of Natural Resources. All bearings, distances and coordinates are based on Louisiana Coordinate System of 1927, (North or South Zone), where applicable.

NOTE: The above description of the Tract nominated for lease has been provided and corrected, where required, exclusively by the nomination party. Any mineral lease selected from this Tract and awarded by the Louisiana State Mineral Board shall be without warranty of any kind, either express, implied, or statutory, including, but not limited to, the implied warranties of merchantability and fitness for a particular purpose. Should the mineral lease awarded by the Louisiana State Mineral Board be subsequently modified, cancelled or abrogated due to the existence of conflicting leases, operating agreements, private claims or other future obligations or conditions which may affect all or any portion of the leased Tract, it shall not relieve the Lessee of the obligation to pay any bonus due thereon to the Louisiana State Mineral Board, nor shall the Louisiana State Mineral Board be obligated to refund any consideration paid by the Lessor prior to such modification, cancellation, or abrogation, including, but not limited to, bonuses, rentals and royalties.

Applicant: Mcginty-Durham, Inc.

Bidder	Cash Payment	Price/ Acre	Rental	Oil	Gas	Other



LA SALLE PARISH

SALINE BAYOU

T5N - R3E

RAPIDES PARISH

P.O.B.
X=2,105,748.00
Y=273,246.00

TRACT 36523 - Concordia Parish, Louisiana

All of the lands now or formerly constituting the beds and bottoms of all water bodies of every nature and description the title of which vests in the State of Louisiana, together with all islands arising therein and other lands formed by accretion or by reliction, where allowed by law, excepting tax adjudicated lands, and not presently under mineral lease on August 11, 2004, situated in Concordia Parish, Louisiana, and more particularly described as follows: Beginning at a point having Coordinates of X = 2,273,910.00 and Y = 174,260.00, thence South 50 degrees East 3000.00 feet to a point having Coordinates of X = 2,276,208.14 and Y = 172,331.65; thence South 40 degrees West for 2700.00 feet to a point having Coordinates of X = 2,274,472.61 and Y = 170,263.32; thence North 50 degrees West 3000.00 feet to a point having Coordinates of X = 2,272,174.48 and Y = 174,191.68; thence North 40 degrees East 2700.00 feet to the point of beginning **LESS AND EXCEPT** any portion of the Red River Wildlife Management Area that may lie within the above described tract containing approximately **80 acres**, all as more particularly outlined on a plat on file in the Office of Mineral Resources, Department of Natural Resources. All bearings, distances and coordinates are based on Louisiana Coordinate System of 1927, (North or South Zone), where applicable.

NOTE: The above description of the Tract nominated for lease has been provided and corrected, where required, exclusively by the nomination party. Any mineral lease selected from this Tract and awarded by the Louisiana State Mineral Board shall be without warranty of any kind, either express, implied, or statutory, including, but not limited to, the implied warranties of merchantability and fitness for a particular purpose. Should the mineral lease awarded by the Louisiana State Mineral Board be subsequently modified, cancelled or abrogated due to the existence of conflicting leases, operating agreements, private claims or other future obligations or conditions which may affect all or any portion of the leased Tract, it shall not relieve the Lessee of the obligation to pay any bonus due thereon to the Louisiana State Mineral Board, nor shall the Louisiana State Mineral Board be obligated to refund any consideration paid by the Lessor prior to such modification, cancellation, or abrogation, including, but not limited to, bonuses, rentals and royalties.

NOTE: This tract is located within the boundaries of a wildlife management area or refuge and any operations conducted thereon in conjunction with this mineral lease may be subject to rules and regulations promulgated by the Department of Wildlife and Fisheries for the protection of fish, birds and other wildlife including, but not necessarily limited to, the following:

1. No activities will be allowed without written authorization from the Louisiana Department of Wildlife and Fisheries.
2. Proposed projects will be evaluated on a case by case basis. Modifications to proposed project features including but not limited to access routes, spoil placement, well sites, flowlines and appurtenant structures may be required by the Department of Wildlife and Fisheries.

3. Compensatory mitigation will be required to offset unavoidable wetland impacts.

Mitigation will be required to offset avoidable wetland impacts.

4. Removal of all structures, facilities and equipment will be required within 120 days of abandonment unless otherwise agreed to by the Louisiana Department of Wildlife and Fisheries.

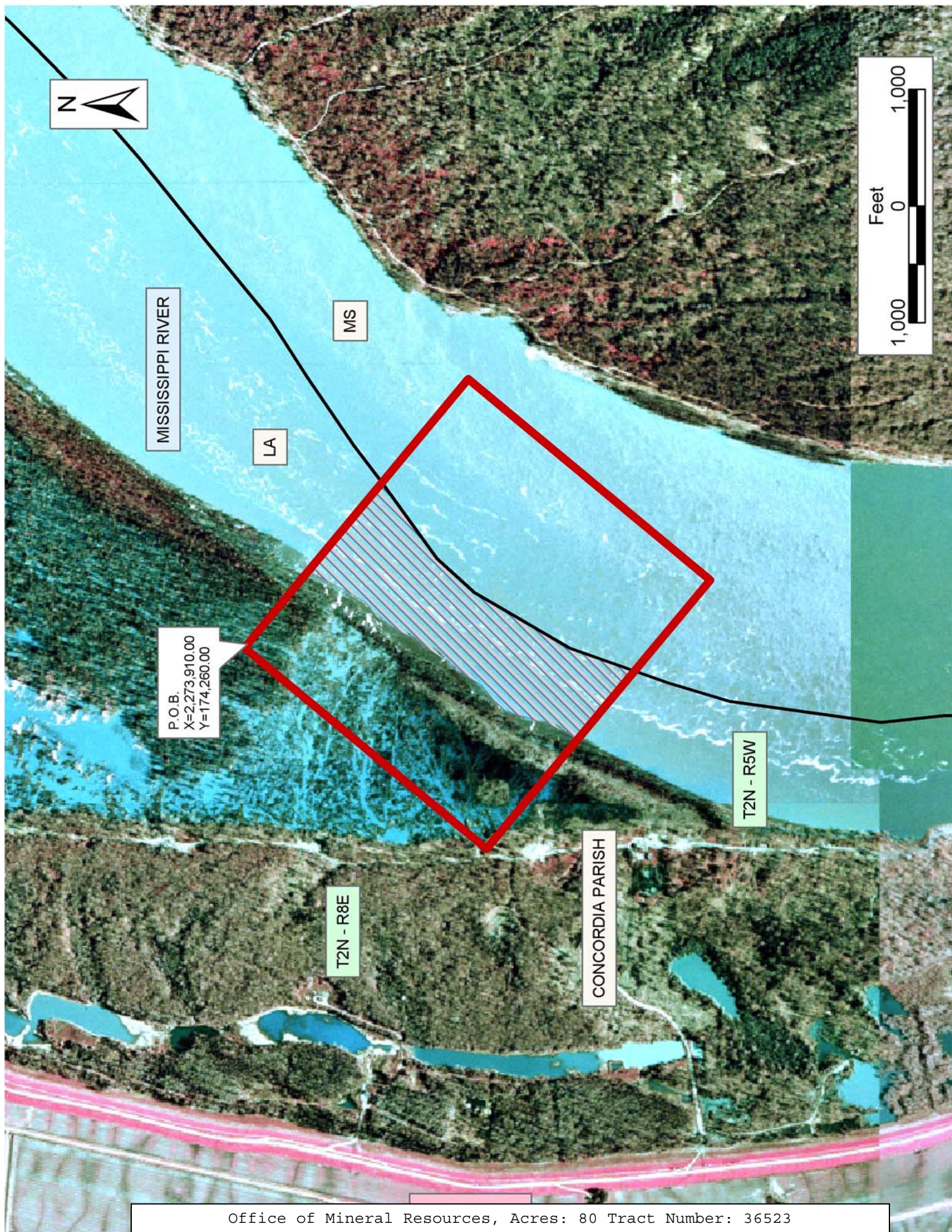
5. No activities will be allowed during the hunting season unless approved by the Department.

6. Compliance with the said WMA regulations will be required unless otherwise specified by the Department.

7. Prior to submitting applications for wetland permits to Federal and State permitting agencies the lease holder shall coordinate project details with the Louisiana Department of Wildlife and Fisheries, Fur and Refuge Division. Contact person for the Department will be Mike Windham at (504) 568-5886.

Applicant: Wilcox Energy Company

Bidder	Cash Payment	Price/ Acre	Rental	Oil	Gas	Other



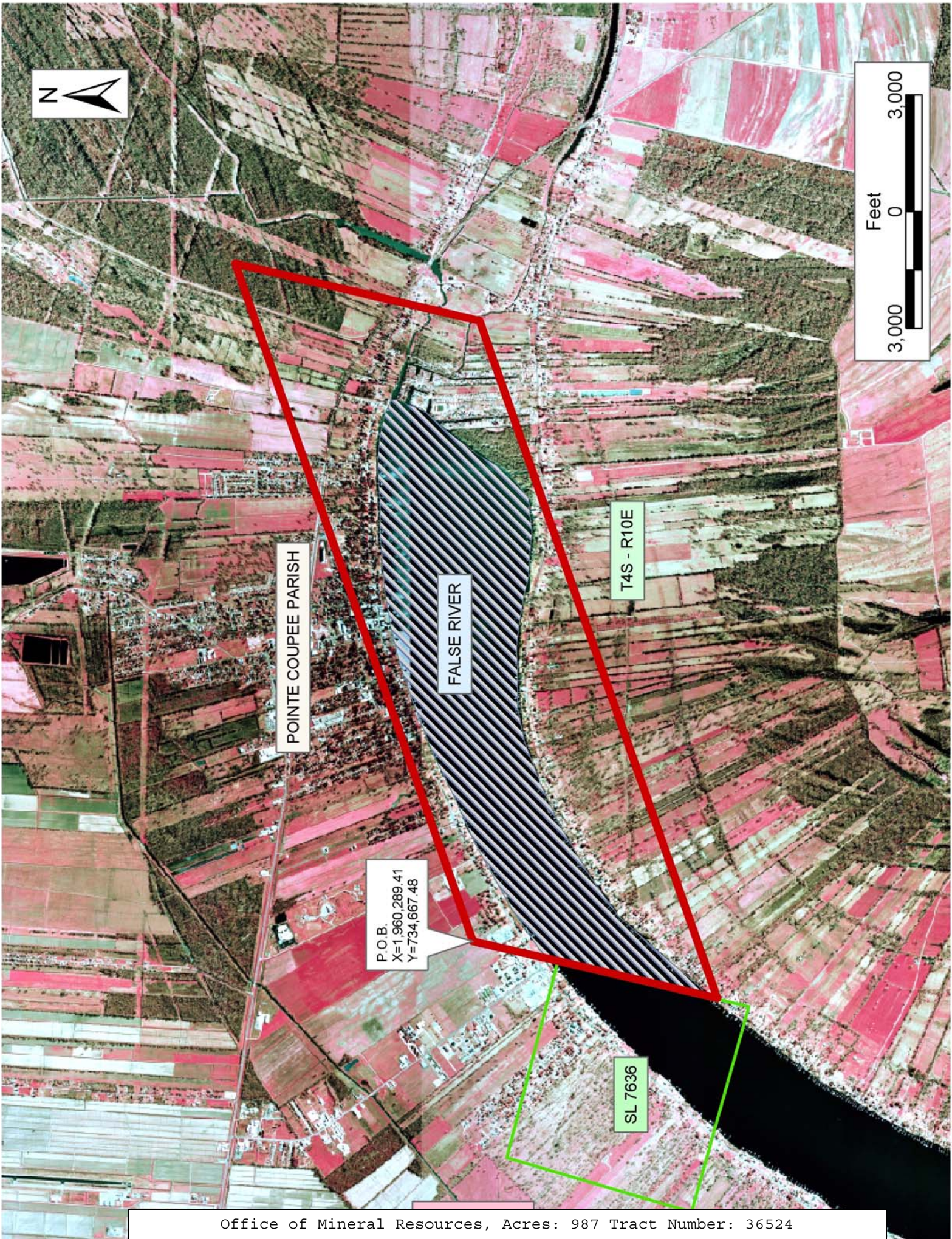
TRACT 36524 - Pointe Coupee Parish, Louisiana

All of the lands now or formerly constituting the beds and bottoms of all water bodies of every nature and description the title of which vests in the State of Louisiana, together with all islands arising therein and other lands formed by accretion or by reliction, where allowed by law, excepting tax adjudicated lands, and not presently under mineral lease on August 11, 2004, situated in Pointe Coupee Parish, Louisiana, and more particularly described as follows: Beginning at a point having Coordinates of X = 1,960,289.41 and Y = 734,667.48; thence North 71 degrees 31 minutes 44 seconds East 18,480.00 feet to a point having Coordinates of X = 1,977,817.38 and Y = 740,522.46; thence South 14 degrees 00 minutes 00 seconds West 6,450.00 feet to a point having Coordinates of X = 1,976,256.98 and Y = 734,264.05; thence South 71 degrees 31 minutes 44 seconds West 18,480.00 feet to a point on the Easterly boundary of State Lease No. 7636, as amended, having Coordinates of X = 1,958,729.02 and Y = 728,409.08; thence North 14 degrees 00 minutes 00 seconds East 4,800.00 feet along said Easterly boundary of said State Lease No. 7639 to its Northeast corner having Coordinates of X = 1,959,890.24 and Y = 733,066.50; thence North 14 degrees 00 minutes 00 seconds East 1,650.00 feet to the point of beginning; containing approximately **987 acres**, all as more particularly outlined on a plat on file in the Office of Mineral Resources, Department of Natural Resources. All bearings, distances and coordinates are based on Louisiana Coordinate System of 1927, (North or South Zone), where applicable.

NOTE: The above description of the Tract nominated for lease has been provided and corrected, where required, exclusively by the nomination party. Any mineral lease selected from this Tract and awarded by the Louisiana State Mineral Board shall be without warranty of any kind, either express, implied, or statutory, including, but not limited to, the implied warranties of merchantability and fitness for a particular purpose. Should the mineral lease awarded by the Louisiana State Mineral Board be subsequently modified, cancelled or abrogated due to the existence of conflicting leases, operating agreements, private claims or other future obligations or conditions which may affect all or any portion of the leased Tract, it shall not relieve the Lessee of the obligation to pay any bonus due thereon to the Louisiana State Mineral Board, nor shall the Louisiana State Mineral Board be obligated to refund any consideration paid by the Lessor prior to such modification, cancellation, or abrogation, including, but not limited to, bonuses, rentals and royalties.

Applicant: Theophilus Oil, Gas & Land Services, LLC

Bidder	Cash Payment	Price/ Acre	Rental	Oil	Gas	Other



TRACT 36525 - Pointe Coupee Parish, Louisiana

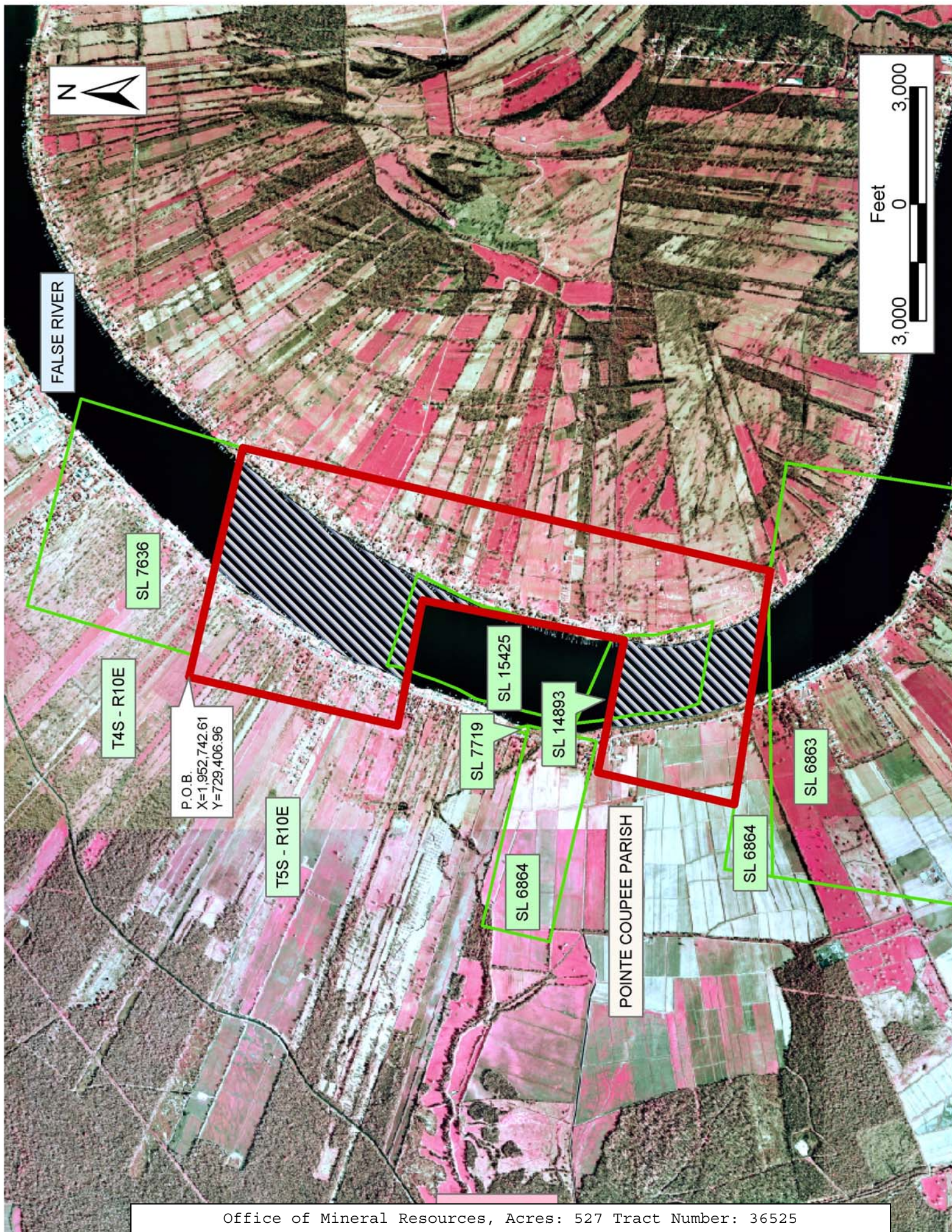
All of the lands now or formerly constituting the beds and bottoms of all water bodies of every nature and description the title of which vests in the State of Louisiana, together with all islands arising therein and other lands formed by accretion or by reliction, where allowed by law, excepting tax adjudicated lands, and not presently under mineral lease on August 11, 2004, situated in Pointe Coupee Parish, Louisiana, and more particularly described as follows: Beginning at a point having Coordinates of X = 1,952,742.61 and Y = 729,406.96; thence South 76 degrees 00 minutes 00 seconds East 873.47 feet to the Southwest corner of State Lease No. 7636, as amended, having Coordinates of X = 1,953,590.13 and Y = 729,195.65; thence South 76 degrees 00 minutes 00 seconds East 5,176.53 feet along the southerly boundary of said State Lease No. 7636 to its Southeast corner having Coordinates of X = 1,958,612.89 and Y = 727,943.33; thence South 14 degrees 00 minutes 00 seconds West 13,905.85 feet to a point of intersection with the Northerly boundary of State Lease No. 6863, as amended, having Coordinates of X = 1,955,248.76 and Y = 714,450.54; thence North 80 degrees 30 minutes 00 seconds West 299.70 feet along said Northern boundary of said State Lease No. 6863 to the most Easterly point of the most Southern portion of State Lease No. 6864, as amended, having Coordinates of X = 1,954,953.17 and Y = 714,500.00; thence North 80 degrees 30 minutes 00 seconds West 5,769.00 feet along said Northern boundary of said Southern portion of State Lease No. 6864 to a point having Coordinates of X = 1,942,263.29 and Y = 715,452.16; thence North 14 degrees 00 minutes 00 seconds East 3,600.67 feet to a point having Coordinates of X = 1,950,134.36 and Y = 718,945.88; thence South 78 degrees 00 minutes 00 seconds East 3,476.03 feet to a point having Coordinates of X = 1,953,534.43 and Y = 718,223.17; thence North 12 degrees 00 minutes 00 seconds East 5280.00 feet to a point having Coordinates of X = 1,954,632.21 and Y = 723,387.79; thence North 78 degrees 00 minutes 00 seconds West 3291.65 feet to a point having Coordinates of X = 1,951,412.49 and Y = 724,072.16; thence North 14 degrees 00 minutes 00 seconds East 5,498.12 feet to the point of beginning, **LESS AND EXCEPT** any portions of State Lease No. 14893, as amended, State Lease No. 15425, as amended, that may lie within the above described tract, containing approximately **527 acres**, all as more particularly outlined on a plat on file in the Office of Mineral Resources, Department of Natural Resources. All bearings, distances and coordinates are based on Louisiana Coordinate System of 1927, (North or South Zone), where applicable.

NOTE: The above description of the Tract nominated for lease has been provided and corrected, where required, exclusively by the nomination party. Any mineral lease selected from this Tract and awarded by the Louisiana State Mineral Board shall be without warranty of any kind, either express, implied, or statutory, including, but not limited to, the implied warranties of merchantability and fitness for a particular purpose. Should the mineral lease awarded by the Louisiana State Mineral Board be subsequently modified, cancelled or abrogated due to the

existence of conflicting leases, operating agreements, private claims or other future obligations or conditions which may affect all or any portion of the leased Tract, it shall not relieve the Lessee of the obligation to pay any bonus due thereon to the Louisiana State Mineral Board, nor shall the Louisiana State Mineral Board be obligated to refund any consideration paid by the Lessor prior to such modification, cancellation, or abrogation, including, but not limited to, bonuses, rentals and royalties.

Applicant: Theophilus Oil, Gas & Land Services, LLC

Bidder	Cash Payment	Price/ Acre	Rental	Oil	Gas	Other



TRACT 36526 - Pointe Coupee Parish, Louisiana

All of the lands now or formerly constituting the beds and bottoms of all water bodies of every nature and description the title of which vests in the State of Louisiana, together with all islands arising therein and other lands formed by accretion or by reliction, where allowed by law, excepting tax adjudicated lands, and not presently under mineral lease on August 11, 2004, situated in Pointe Coupee Parish, Louisiana, and more particularly described as follows: Beginning at a point having Coordinates of X = 1,968,402.84 and Y = 712,249.30; thence South 26 degrees 15 minutes 00 seconds West 6,654.53 feet to a point having Coordinates of X = 1,965,459.62 and Y = 706,281.03; thence North 80 degrees 30 minutes 00 seconds West 8,614.01 feet to a point of intersection with the easterly boundary of State Lease No. 6863, as amended, having Coordinates of X = 1,956,963.75 and Y = 707,702.76; thence North 09 degrees 30 minutes 00 seconds East 6,372.18 feet along said easterly boundary of said State Lease No. 6863 to its Northeast corner having Coordinates of X = 1,958,015.46 and Y = 713,987.55; thence South 80 degrees 30 minutes 00 seconds East 10,531.82 feet to the point of beginning; containing approximately **460 acres**, all as more particularly outlined on a plat on file in the Office of Mineral Resources, Department of Natural Resources. All bearings, distances and coordinates are based on Louisiana Coordinate System of 1927, (North or South Zone), where applicable.

NOTE: The above description of the Tract nominated for lease has been provided and corrected, where required, exclusively by the nomination party. Any mineral lease selected from this Tract and awarded by the Louisiana State Mineral Board shall be without warranty of any kind, either express, implied, or statutory, including, but not limited to, the implied warranties of merchantability and fitness for a particular purpose. Should the mineral lease awarded by the Louisiana State Mineral Board be subsequently modified, cancelled or abrogated due to the existence of conflicting leases, operating agreements, private claims or other future obligations or conditions which may affect all or any portion of the leased Tract, it shall not relieve the Lessee of the obligation to pay any bonus due thereon to the Louisiana State Mineral Board, nor shall the Louisiana State Mineral Board be obligated to refund any consideration paid by the Lessor prior to such modification, cancellation, or abrogation, including, but not limited to, bonuses, rentals and royalties.

Applicant: Theophilus Oil, Gas & Land Services, LLC

Bidder	Cash Payment	Price/ Acre	Rental	Oil	Gas	Other



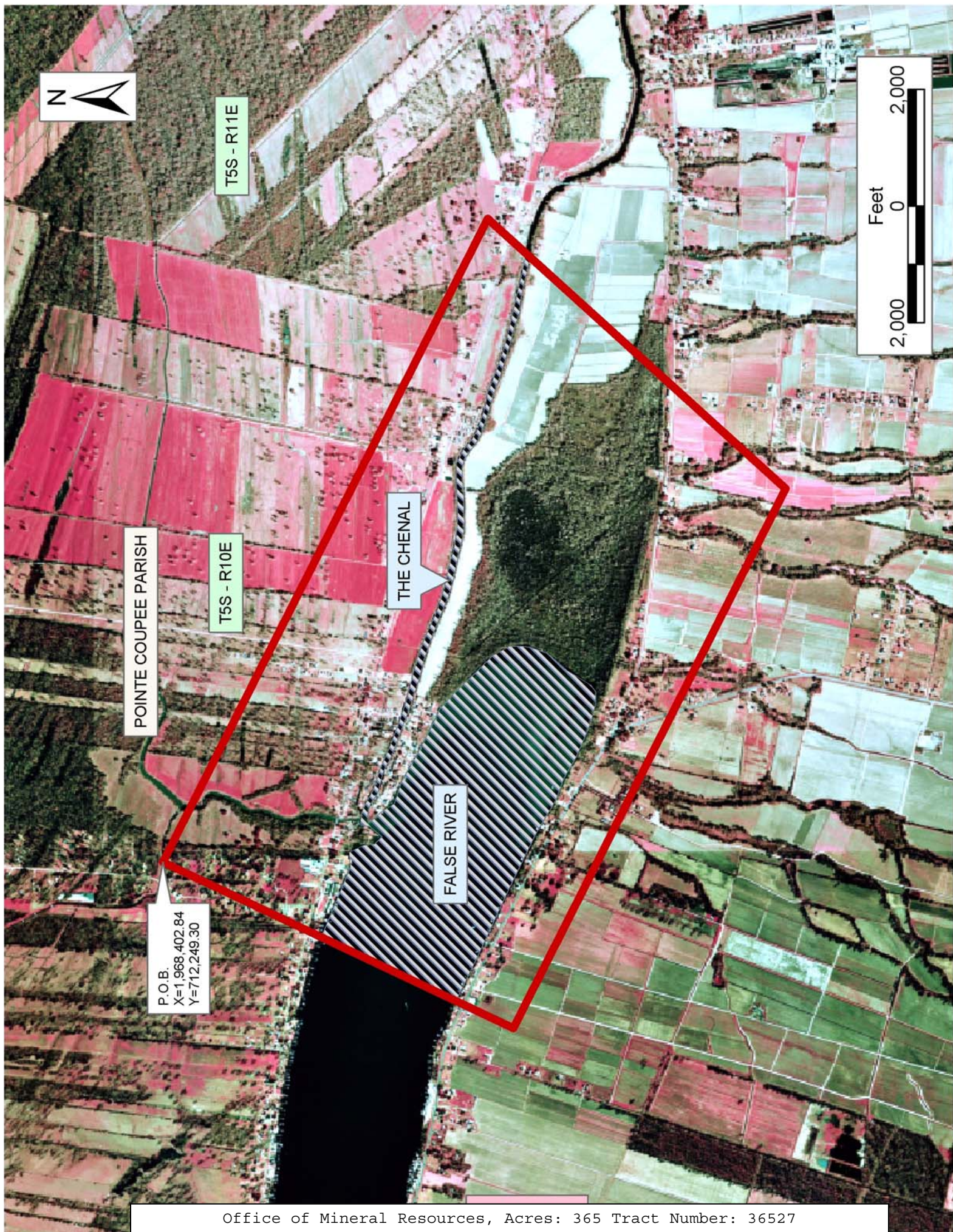
TRACT 36527 - Pointe Coupee Parish, Louisiana

All of the lands now or formerly constituting the beds and bottoms of all water bodies of every nature and description the title of which vests in the State of Louisiana, together with all islands arising therein and other lands formed by accretion or by reliction, where allowed by law, excepting tax adjudicated lands, and not presently under mineral lease on August 11, 2004, situated in Pointe Coupee Parish, Louisiana, and more particularly described as follows: Beginning at a point having Coordinates of X = 1,968,402.84 and Y = 712,249.30; thence South 62 degrees 21 minutes 42 seconds East 12,359.39 feet to a point having Coordinates of X = 1,979,351.95 and Y = 706,515.94; thence South 43 degrees 00 minutes 00 seconds West 6,899.07 feet to a point having Coordinates of X = 1,974,646.80 and Y = 701,470.28; thence North 62 degrees 21 minutes 42 seconds West 10,370.52 feet to a point having Coordinates of X = 1,965,459.62 and Y = 706,281.03; thence North 26 degrees 15 minutes 00 seconds East 6,654.53 feet to the point of beginning; containing approximately **365 acres**, all as more particularly outlined on a plat on file in the Office of Mineral Resources, Department of Natural Resources. All bearings, distances and coordinates are based on Louisiana Coordinate System of 1927, (North or South Zone), where applicable.

NOTE: The above description of the Tract nominated for lease has been provided and corrected, where required, exclusively by the nomination party. Any mineral lease selected from this Tract and awarded by the Louisiana State Mineral Board shall be without warranty of any kind, either express, implied, or statutory, including, but not limited to, the implied warranties of merchantability and fitness for a particular purpose. Should the mineral lease awarded by the Louisiana State Mineral Board be subsequently modified, cancelled or abrogated due to the existence of conflicting leases, operating agreements, private claims or other future obligations or conditions which may affect all or any portion of the leased Tract, it shall not relieve the Lessee of the obligation to pay any bonus due thereon to the Louisiana State Mineral Board, nor shall the Louisiana State Mineral Board be obligated to refund any consideration paid by the Lessor prior to such modification, cancellation, or abrogation, including, but not limited to, bonuses, rentals and royalties.

Bidder	Cash Payment	Price/ Acre	Rental	Oil	Gas	Other

Applicant: Theophilus Oil, Gas & Land Services, LLC



TRACT 36528 - Assumption Parish, Louisiana

All of the lands now or formerly constituting the beds and bottoms of all water bodies of every nature and description the title of which vests in the State of Louisiana, together with all islands arising therein and other lands formed by accretion or by reliction, where allowed by law, excepting tax adjudicated lands, and not presently under mineral lease on August 11, 2004, situated in Assumption Parish, Louisiana, and more particularly described as follows: Beginning at a point having Coordinates of X = 2,072,878.00 and Y = 448,160.00; thence East 5,000.00 feet to a point having Coordinates of X = 2,077,878.00 and Y = 448,160.00; thence South 6,000.00 feet to a point having Coordinates of X = 2,077,878.00 and Y = 442,160.00; thence West 5,000.00 feet to a point having Coordinates of X = 2,072,878.00 and Y = 442,160.00; thence North 6,000.00 feet to the point of beginning, containing approximately **4 acres**, all as more particularly outlined on a plat on file in the Office of Mineral Resources, Department of Natural Resources. All bearings, distances and coordinates are based on Louisiana Coordinate System of 1927, (North or South Zone), where applicable.

NOTE: The above description of the Tract nominated for lease has been provided and corrected, where required, exclusively by the nomination party. Any mineral lease selected from this Tract and awarded by the Louisiana State Mineral Board shall be without warranty of any kind, either express, implied, or statutory, including, but not limited to, the implied warranties of merchantability and fitness for a particular purpose. Should the mineral lease awarded by the Louisiana State Mineral Board be subsequently modified, cancelled or abrogated due to the existence of conflicting leases, operating agreements, private claims or other future obligations or conditions which may affect all or any portion of the leased Tract, it shall not relieve the Lessee of the obligation to pay any bonus due thereon to the Louisiana State Mineral Board, nor shall the Louisiana State Mineral Board be obligated to refund any consideration paid by the Lessor prior to such modification, cancellation, or abrogation, including, but not limited to, bonuses, rentals and royalties.

NOTE: The State of Louisiana does hereby reserve, and this lease shall be subject to, the imprescriptible right of surface use in the nature of a servitude in favor of the Department of Natural Resources, including its Offices and Commissions, for the sole purpose of implementing, constructing, servicing and maintaining approved coastal zone management and/or restoration projects. Utilization of any and all rights derived under this lease by the mineral lessee, its agents, successors or assigns, shall not interfere with nor hinder the reasonable surface use by the Department of Natural Resources, its Offices or Commissions, as herein above reserved.

Applicant: Theophilus Oil, Gas & Land Services, LLC

Bidder	Cash Payment	Price/ Acre	Rental	Oil	Gas	Other



ASSUMPTION PARISH

P.O.B.
X=2,072,878.00
Y=448,160.00

T13S - R13E

T14S - R14E



TRACT 36529 - St. Bernard Parish, Louisiana

All of the lands now or formerly constituting the beds and bottoms of all water bodies of every nature and description the title of which vests in the State of Louisiana, together with all islands arising therein and other lands formed by accretion or by reliction, where allowed by law, excepting tax adjudicated lands, and not presently under mineral lease on August 11, 2004, situated in St. Bernard Parish, Louisiana, and more particularly described as follows: Beginning at a point having Coordinates of X = 2,494,542.00 and Y = 405,184.00; thence North 14,686.00 feet to a point having Coordinates of X = 2,494,542.00 and Y = 419,870.00; thence East 16,408.00 feet to a point having Coordinates of X = 2,510,950.00 and Y = 419,870.00; thence South 01 degrees 44 minutes 56 seconds East 14,692.84 feet to a point having Coordinates of X = 2,511,398.44 and Y = 405,184.00; thence West 16,856.44 feet to the point of beginning, containing approximately **79 acres**, all as more particularly outlined on a plat on file in the Office of Mineral Resources, Department of Natural Resources. All bearings, distances and coordinates are based on Louisiana Coordinate System of 1927, (North or South Zone), where applicable.

NOTE: The above description of the Tract nominated for lease has been provided and corrected, where required, exclusively by the nomination party. Any mineral lease selected from this Tract and awarded by the Louisiana State Mineral Board shall be without warranty of any kind, either express, implied, or statutory, including, but not limited to, the implied warranties of merchantability and fitness for a particular purpose. Should the mineral lease awarded by the Louisiana State Mineral Board be subsequently modified, cancelled or abrogated due to the existence of conflicting leases, operating agreements, private claims or other future obligations or conditions which may affect all or any portion of the leased Tract, it shall not relieve the Lessee of the obligation to pay any bonus due thereon to the Louisiana State Mineral Board, nor shall the Louisiana State Mineral Board be obligated to refund any consideration paid by the Lessor prior to such modification, cancellation, or abrogation, including, but not limited to, bonuses, rentals and royalties.

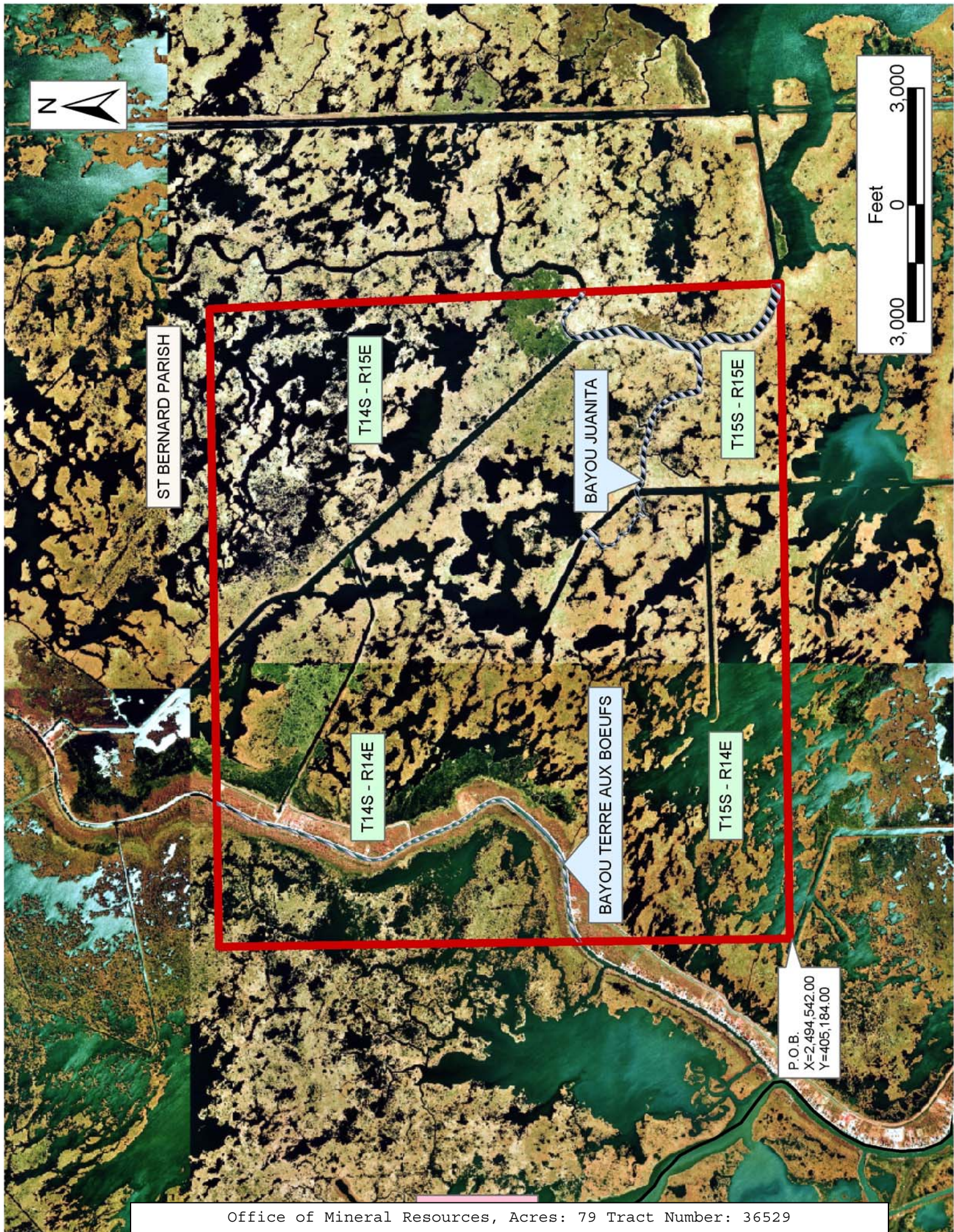
NOTE: The State of Louisiana does hereby reserve, and this lease shall be subject to, the imprescriptible right of surface use in the nature of a servitude in favor of the Department of Natural Resources, including its Offices and Commissions, for the sole purpose of implementing, constructing, servicing and maintaining approved coastal zone management and/or restoration projects. Utilization of any and all rights derived under this lease by the mineral lessee, its agents, successors or assigns, shall not interfere with nor hinder the reasonable surface use by the Department of Natural Resources, its Offices or Commissions, as herein above reserved.

NOTE: The Department of Wildlife and Fisheries has designated certain areas in the coastal waters of the State of Louisiana as Oyster Seed Bed Areas. The exact location of those Seed Bed Areas must be obtained from

the Department of Wildlife and Fisheries and any work done under a mineral lease from the State of Louisiana may necessarily be conducted in conformity with the rules and regulations promulgated by the said Department of Wildlife and Fisheries for Oyster Seed Bed Areas.

Applicant: Fidelity Fuels

Bidder	Cash Payment	Price/ Acre	Rental	Oil	Gas	Other



TRACT 36530 - Portion of Block 47, Chandeleur Sound Area, St. Bernard Parish, Louisiana

All of the lands now or formerly constituting the beds and bottoms of all water bodies of every nature and description the title of which vests in the State of Louisiana, together with all islands arising therein and other lands formed by accretion or by reliction, where allowed by law, excepting tax adjudicated lands, and not presently under mineral lease on August 11, 2004, situated in St. Bernard Parish, Louisiana, and more particularly described as follows: Beginning at a point having Coordinates of X = 2,585,600.54 and Y = 407,478.84; thence North 89 degrees 43 minutes 57 seconds East 5,314.02 feet to a point having Coordinates of X = 2,590,914.50 and Y = 407,503.64; thence North 89 degrees 24 minutes 39 seconds East 5,376.03 feet to a point within Block 47, Chandeleur Sound Area, having Coordinates of X = 2,596,290.25 and Y = 407,558.91; thence South 01 degrees 43 minutes 12 seconds East 2,384.79 feet to a point having Coordinates of X = 2,596,361.83 and Y = 405,175.20; thence West 1,484.32 feet to a point having Coordinates of X = 2,594,877.51 and Y = 405,175.20; thence South 2,584.99 feet to a point having Coordinates of X = 2,594,877.51 and Y = 402,590.21; thence West 3,777.51 feet to a point having Coordinates of X = 2,591,100.00 and Y = 402,590.21; thence North 4,787.71 feet to a point having Coordinates of X = 2,591,100.00 and Y = 407,377.92; thence West 3,022.90 feet to a point having Coordinates of X = 2,588,077.10 and Y = 407,377.92; thence South 4,865.98 feet to a point having Coordinates of X = 2,588,077.10 and Y = 402,511.94; thence North 88 degrees 31 minutes 00 seconds East 3,023.91 feet to a point having Coordinates of X = 2,591,100.00 and Y = 402,590.21; thence South 396.52 feet to the Northwest corner of State Lease No. 15485, as amended, having Coordinates of X = 2,591,100.00 and Y = 402,193.69; thence South 83 degrees 44 minutes 38 seconds West 125.75 feet to a point having Coordinates of X = 2,590,975.00 and Y = 402,179.99; thence South 78 degrees 51 minutes 18 seconds West 1,218.04 feet to a point having Coordinates of X = 2,589,779.93 and Y = 401,944.55; thence South 78 degrees 51 minutes 17 seconds West 489.15 feet to a point having Coordinates of X = 2,589,300.01 and Y = 401,850.00; thence South 73 degrees 32 minutes 25 seconds West 1,147.02 feet to a point having Coordinates of X = 2,588,200.00 and Y = 401,525.00; thence South 64 degrees 10 minutes 43 seconds West 555.46 feet to a point having Coordinates of X = 2,587,700.00 and Y = 401,283.06; thence North 1,219.12 feet to a point having Coordinates 2,587,700.00 and Y = 402,502.18; thence South 88 degrees 31 minutes 40 seconds West 1,943.72 feet to a point having Coordinates of X = 2,585,756.92 and Y = 402,452.24; thence North 01 degrees 46 minutes 55 seconds West 5,029.03 feet to the point of beginning, containing approximately **157 acres**, all as more particularly outlined on a plat on file in the Office of Mineral Resources, Department of Natural Resources. All bearings, distances and coordinates are based on Louisiana Coordinate System of 1927, (North or South Zone), where applicable.

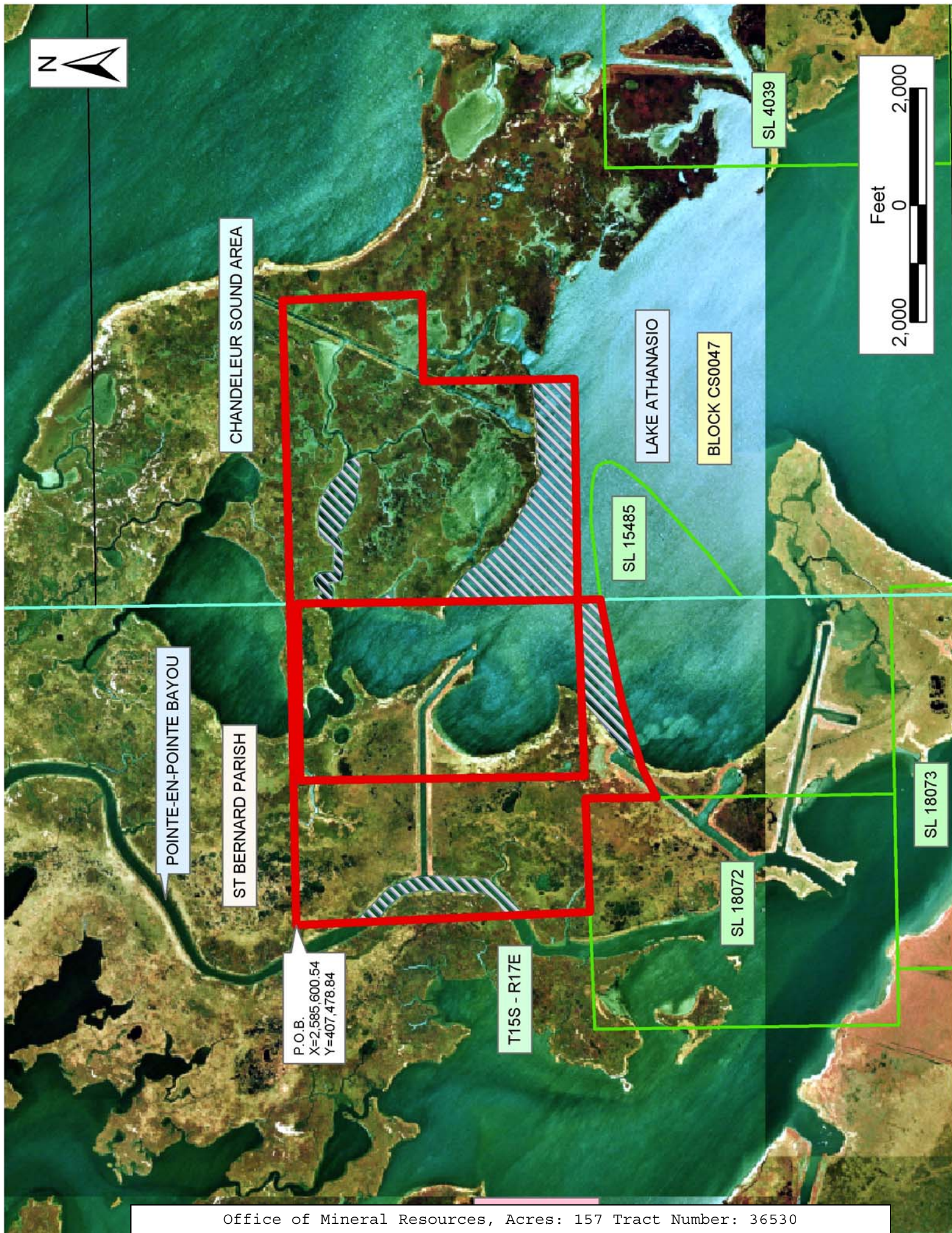
NOTE: The above description of the Tract nominated for lease has been provided and corrected, where required, exclusively by the nomination party. Any mineral lease selected from this Tract and awarded by the Louisiana State Mineral Board shall be without warranty of any kind, either express, implied, or statutory, including, but not limited to, the implied warranties of merchantability and fitness for a particular purpose. Should the mineral lease awarded by the Louisiana State Mineral Board be subsequently modified, cancelled or abrogated due to the existence of conflicting leases, operating agreements, private claims or other future obligations or conditions which may affect all or any portion of the leased Tract, it shall not relieve the Lessee of the obligation to pay any bonus due thereon to the Louisiana State Mineral Board, nor shall the Louisiana State Mineral Board be obligated to refund any consideration paid by the Lessor prior to such modification, cancellation, or abrogation, including, but not limited to, bonuses, rentals and royalties.

NOTE: The State of Louisiana does hereby reserve, and this lease shall be subject to, the imprescriptible right of surface use in the nature of a servitude in favor of the Department of Natural Resources, including its Offices and Commissions, for the sole purpose of implementing, constructing, servicing and maintaining approved coastal zone management and/or restoration projects. Utilization of any and all rights derived under this lease by the mineral lessee, its agents, successors or assigns, shall not interfere with nor hinder the reasonable surface use by the Department of Natural Resources, its Offices or Commissions, as herein above reserved.

NOTE: The Department of Wildlife and Fisheries has designated certain areas in the coastal waters of the State of Louisiana as Oyster Seed Bed Areas. The exact location of those Seed Bed Areas must be obtained from the Department of Wildlife and Fisheries and any work done under a mineral lease from the State of Louisiana may necessarily be conducted in conformity with the rules and regulations promulgated by the said Department of Wildlife and Fisheries for Oyster Seed Bed Areas.

Applicant: Kare-Sue Energy, Inc.

Bidder	Cash Payment	Price/ Acre	Rental	Oil	Gas	Other



TRACT 36531 - Plaquemines and St. Bernard Parishes, Louisiana

All of the lands now or formerly constituting the beds and bottoms of all water bodies of every nature and description the title of which vests in the State of Louisiana, together with all islands arising therein and other lands formed by accretion or by reliction, where allowed by law, excepting tax adjudicated lands, and not presently under mineral lease on August 11, 2004, situated in Plaquemines and St. Bernard Parishes, Louisiana, and more particularly described as follows: Beginning at a point having Coordinates of X = 2,494,542.00 and Y = 405,184.00; thence South approximately 13,263 feet to a point on the North line of State Lease No. 335, as amended, having a Coordinate of X = 2,494,542.00; thence Easterly along the North line of said State Lease No. 335 to a point of intersection with a North-South line having a Coordinate of X = 2,477,796.00; thence North approximately 6,666 feet to a point having Coordinates of X = 2,477,796.00 and Y = 398,358.00; thence North 45 degrees 29 minutes 57 seconds East 9,738.64 feet to a point having Coordinates of X = 2,484,742.00 and Y = 405,184.00; thence East 9,800.00 feet to the point of beginning, **LESS AND EXCEPT** any portion of State Lease No. 335, as amended, that may lie within the above described tract, containing approximately **219 acres**, all as more particularly outlined on a plat on file in the Office of Mineral Resources, Department of Natural Resources. All bearings, distances and coordinates are based on Louisiana Coordinate System of 1927, (North or South Zone), where applicable.

NOTE: The above description of the Tract nominated for lease has been provided and corrected, where required, exclusively by the nomination party. Any mineral lease selected from this Tract and awarded by the Louisiana State Mineral Board shall be without warranty of any kind, either express, implied, or statutory, including, but not limited to, the implied warranties of merchantability and fitness for a particular purpose. Should the mineral lease awarded by the Louisiana State Mineral Board be subsequently modified, cancelled or abrogated due to the existence of conflicting leases, operating agreements, private claims or other future obligations or conditions which may affect all or any portion of the leased Tract, it shall not relieve the Lessee of the obligation to pay any bonus due thereon to the Louisiana State Mineral Board, nor shall the Louisiana State Mineral Board be obligated to refund any consideration paid by the Lessor prior to such modification, cancellation, or abrogation, including, but not limited to, bonuses, rentals and royalties.

NOTE: The State of Louisiana does hereby reserve, and this lease shall be subject to, the imprescriptible right of surface use in the nature of a servitude in favor of the Department of Natural Resources, including its Offices and Commissions, for the sole purpose of implementing, constructing, servicing and maintaining approved coastal zone management and/or restoration projects. Utilization of any and all rights derived under this lease by the mineral lessee, its agents, successors or assigns, shall not interfere with nor hinder the reasonable surface use by the

Department of Natural Resources, its Offices or Commissions, as herein above reserved.

NOTE: The Department of Wildlife and Fisheries has designated certain areas in the coastal waters of the State of Louisiana as Oyster Seed Bed Areas. The exact location of those Seed Bed Areas must be obtained from the Department of Wildlife and Fisheries and any work done under a mineral lease from the State of Louisiana may necessarily be conducted in conformity with the rules and regulations promulgated by the said Department of Wildlife and Fisheries for Oyster Seed Bed Areas.

Applicant: Fidelity Fuels

Bidder	Cash Payment	Price/ Acre	Rental	Oil	Gas	Other

