

**TRACT 35570 - Portion of Blocks 44, and 55, Main Pass Area, Revised, Plaquemines Parish, Louisiana**

The beds and bottoms of all water bodies belonging to the State of Louisiana located in that portion of Blocks 44, and 55, Main Pass Area, Revised, together with any present lands formed by accretion to the shoreline, located in Plaquemines Parish, Louisiana, and not presently under mineral lease on August 13, 2003, the geographical area of which is more fully described as follows: Beginning at the Northwest corner of State Lease No. 16779 and a point on the West line of Block 55, Main Pass Area, Revised, having Coordinates of X = 2,694,350.00 and Y = 254,122.00; thence North 9,208.00 feet on the West line of said Block 55 to its Northwest corner, and the Southwest corner of Block 44, Main Pass Area, Revised, having Coordinates of X = 2,694,350.00 and Y = 263,330.00; thence North 3,385.00 feet on the West line of said Block 44 to the Southwest corner of State Lease No. 17731 having Coordinates of X = 2,694,350.00 and Y = 266,715.00; thence East 4,952.00 feet on the South line of said State Lease No. 17731 to its Southeast corner having Coordinates of X = 2,699,302 and Y = 266,715; thence along an arc having a radius of 18,240.60 feet and center at X = 2,688,235 and Y = 252,216 to a point on the South line of said Block 44 and a point on the North line of said Block 55 having Coordinates of X = 2,702,697.99 and Y = 263,330.00; thence along an arc having a radius of 18,240.60 feet and a center at X = 2,688,235 and Y = 252,216 to a point having Coordinates of X = 2,704,468 and Y = 260,534; thence South 4,579.00 feet to a point on the North line of State Lease No. 16779 having Coordinates of X = 2,704,468.00 and Y = 255,955.00; thence along the boundary of said State Lease No. 16779 the following courses: West 3,806.00 feet, South 1,833.00 feet, and West 6,312.00 feet to the point of beginning, containing approximately **2,454.04 acres, LESS AND EXCEPT** that portion thereof, if any, lying seaward of the line three nautical miles from the coast line of Louisiana, as said three mile line has been decreed by the Supreme Court of the United States, as determined by a Special Master appointed therein, in litigation styled **United States v. State of Louisiana et al No. 9 Original**, in 1975, all as more particularly outlined on a plat in the Office of Mineral Resources, Department of Natural Resources. All bearings, distances and coordinates are based on the Louisiana Coordinate System of 1927, (South Zone).

NOTE: The above description of the Tract nominated for lease has been provided and corrected, where required, exclusively by the nomination party. Any mineral lease selected from this Tract and awarded by the Louisiana State Mineral Board shall be without warranty of any kind, either express, implied, or statutory, including, but not limited to, the implied warranties of merchantability and fitness for a particular purpose. Should the mineral lease awarded by the Louisiana State Mineral Board be subsequently modified, cancelled or abrogated due to the existence of conflicting leases, operating agreements, private claims or other future obligations or conditions which may affect all or any portion of the leased Tract, it shall not relieve the Lessee of the obligation to

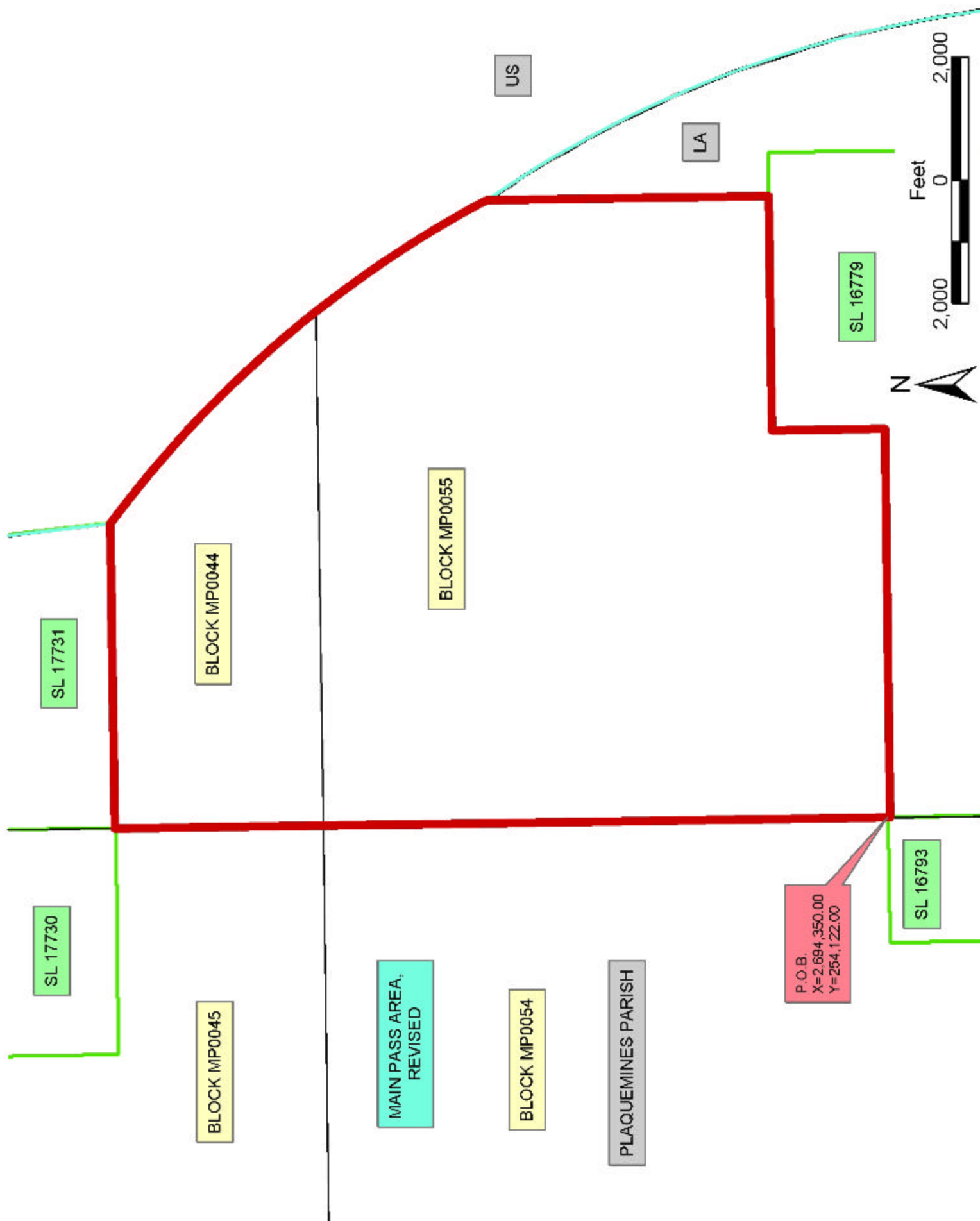
pay any bonus due thereon to the Louisiana State Mineral Board, nor shall the Louisiana State Mineral Board be obligated to refund any consideration paid by the Lessor prior to such modification, cancellation, or abrogation, including, but not limited to, bonuses, rentals and royalties.

NOTE: The State of Louisiana does hereby reserve, and this lease shall be subject to, the imprescriptible right of surface use in the nature of a servitude in favor of the Department of Natural Resources, including its Offices and Commissions, for the sole purpose of implementing, constructing, servicing and maintaining approved coastal zone management and/or restoration projects. Utilization of any and all rights derived under this lease by the mineral lessee, its agents, successors or assigns, shall not interfere with nor hinder the reasonable surface use by the Department of Natural Resources, its Offices or Commissions, as herein above reserved.

NOTE: The Department of Wildlife and Fisheries has designated certain areas in the coastal waters of the State of Louisiana as Oyster Seed Bed Areas. The exact location of those Seed Bed Areas must be obtained from the Department of Wildlife and Fisheries and any work done under a mineral lease from the State of Louisiana may necessarily be conducted in conformity with the rules and regulations promulgated by the said Department of Wildlife and Fisheries for Oyster Seed Bed Areas.

Applicant: Fleetwood Resources, Inc.

Bidder	Cash Payment	Price/ Acre	Rental	Oil	Gas	Other



**TRACT 35572 - Portion of Block 54, Main Pass Area, Revised, Plaquemines Parish, Louisiana**

The beds and bottoms of all water bodies belonging to the State of Louisiana located in that portion of Block 54, Main Pass Area, Revised, together with any present lands formed by accretion to the shoreline, located in Plaquemines Parish, Louisiana, and not presently under mineral lease on August 13, 2003, the geographical area of which is more fully described as follows: Beginning at a point on the North line of Block 54, Main Pass Area, Revised, having Coordinates of X = 2,686,900.00 and Y = 263,330.00; thence East 7,450.00 feet on the North line of said Block 54 to its Northeast corner having Coordinates of X = 2,694,350.00 and Y = 263,330.00; thence South 9,170.00 feet on the East line of said Block 54 to the Northeast corner of State Lease No. 16793 having Coordinates of X = 2,694,350.00 and Y = 254,160.00; thence along the boundary of said State Lease No. 16793 the following courses: West 2,034.00 feet, South 5,064.00 feet, and South 50 degrees 34 minutes 44 seconds East 2,633.01 feet to its Southeast corner and a point on the East line of said Block 54 having Coordinates of X = 2,694,350.00 and Y = 247,424.00; thence South approximately 3,355 feet on the East line of said Block 54 to its Southeast corner having a Coordinate of X = 2,694,350.00; thence Northwesterly approximately 1,866 feet on the South line of said Block 54 to a point having a Coordinate of Y = 245,333.08; thence Northwesterly on a straight line to a point having Coordinates of X = 2,689,305 and Y = 250,395; thence Northwesterly on a straight line to a point having Coordinates of X = 2,688,235 and Y = 252,215; thence Northwesterly on a straight line to a point having Coordinates of X = 2,686,900.00 and Y = 253,385.24; thence North 9,944.76 feet to the point of beginning, containing approximately **2,233.50 acres**, all as more particularly outlined on a plat on file in the Office of Mineral Resources, Department of Natural Resources. All bearings, distances and coordinates are based on Louisiana Coordinate System of 1927, (North or South Zone).

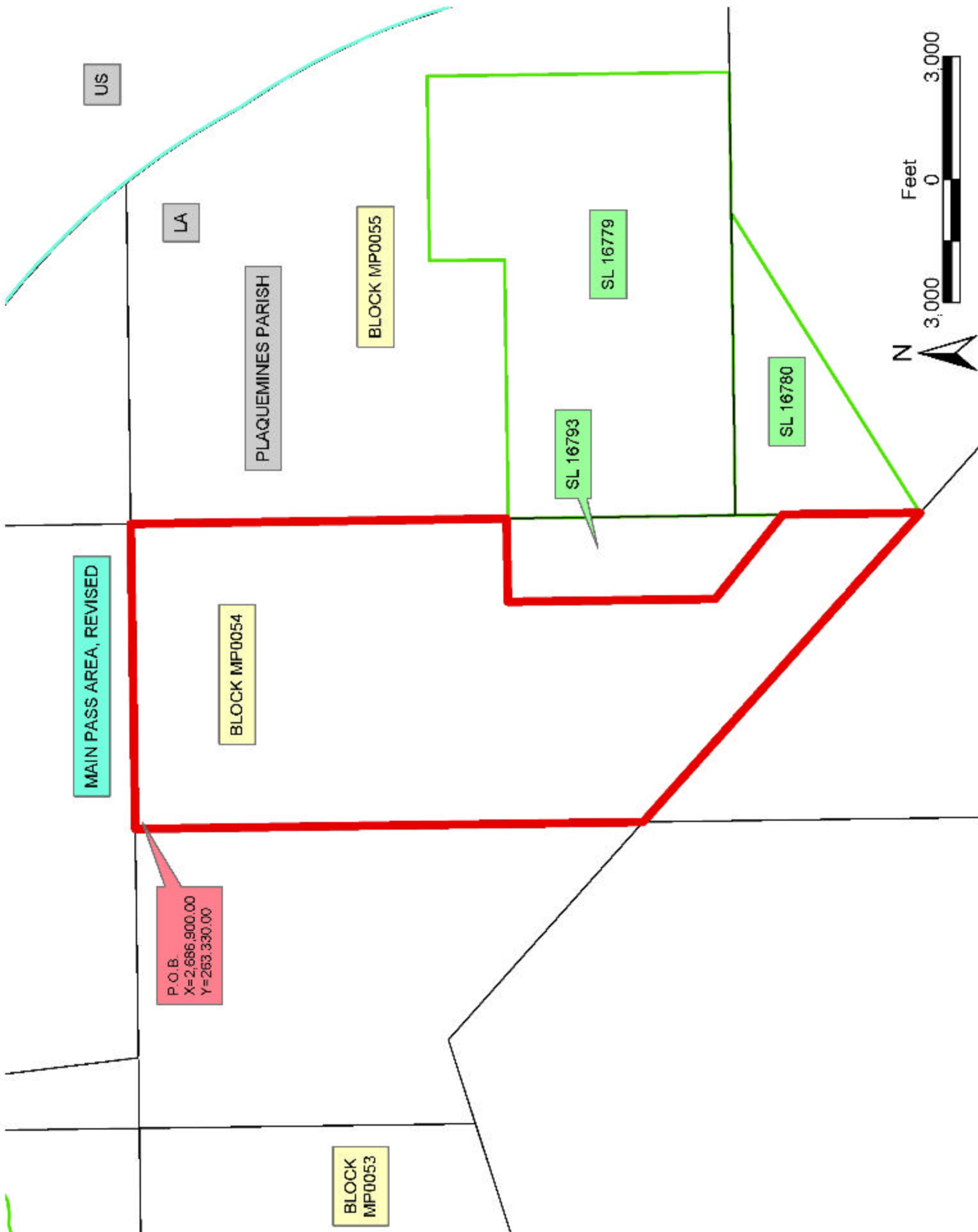
NOTE: The above description of the Tract nominated for lease has been provided and corrected, where required, exclusively by the nomination party. Any mineral lease selected from this Tract and awarded by the Louisiana State Mineral Board shall be without warranty of any kind, either express, implied, or statutory, including, but not limited to, the implied warranties of merchantability and fitness for a particular purpose. Should the mineral lease awarded by the Louisiana State Mineral Board be subsequently modified, cancelled or abrogated due to the existence of conflicting leases, operating agreements, private claims or other future obligations or conditions which may affect all or any portion of the leased Tract, it shall not relieve the Lessee of the obligation to pay any bonus due thereon to the Louisiana State Mineral Board, nor shall the Louisiana State Mineral Board be obligated to refund any consideration paid by the Lessor prior to such modification, cancellation, or abrogation, including, but not limited to, bonuses, rentals and royalties.

NOTE: The State of Louisiana does hereby reserve, and this lease shall be subject to, the imprescriptible right of surface use in the nature of a servitude in favor of the Department of Natural Resources, including its Offices and Commissions, for the sole purpose of implementing, constructing, servicing and maintaining approved coastal zone management and/or restoration projects. Utilization of any and all rights derived under this lease by the mineral lessee, its agents, successors or assigns, shall not interfere with nor hinder the reasonable surface use by the Department of Natural Resources, its Offices or Commissions, as herein above reserved.

NOTE: The Department of Wildlife and Fisheries has designated certain areas in the coastal waters of the State of Louisiana as Oyster Seed Bed Areas. The exact location of those Seed Bed Areas must be obtained from the Department of Wildlife and Fisheries and any work done under a mineral lease from the State of Louisiana may necessarily be conducted in conformity with the rules and regulations promulgated by the said Department of Wildlife and Fisheries for Oyster Seed Bed Areas.

Applicant: Fleetwood Resources, Inc.

Bidder	Cash Payment	Price/ Acre	Rental	Oil	Gas	Other



**TRACT 35576 - Portion of Block 52, Breton Sound Area, Plaquemines Parish, Louisiana**

The beds and bottoms of all water bodies belonging to the State of Louisiana located in that portion of Block 52, Breton Sound Area, together with any present lands formed by accretion to the shoreline, located in Plaquemines Parish, Louisiana, and not presently under mineral lease on August 13, 2003, the geographical area of which is more fully described as follows: Beginning at a point on the South line of Block 52, Breton Sound Area, having Coordinates of X = 2,690,350.00 and Y = 278,080.00; thence North 10,484.86 feet to a point on the Southern boundary of State Lease No. 12806, as amended, having Coordinates of X = 2,690,350.00 and Y = 288,564.86; thence along the boundary of said State Lease No. 12806 the following courses: Northeasterly on an arc having a radius of 10,021.87 feet and a chord bearing of North 65 degrees 14 minutes 40 seconds East 1,804.85 feet and North 60 degrees 17 minutes 03 seconds East 523.59 feet to the Northwest corner of State Lease No. 16737 having Coordinates of X = 2,692,443.73 and Y = 289,580.18; thence along the boundary of said State Lease No. 16737 the following courses: South 07 degrees 07 minutes 30 seconds East 3,275.47 feet and East 1,500.00 to its Southeast corner, also being a point on the East line of said Block 52 having Coordinates of X = 2,694,350.00 and Y = 286,330.00; thence South 8,250.00 feet on the East line of said Block 52 to its Southeast corner having Coordinates of X = 2,694,350.00 and Y = 278,080.00; thence West 4,000.00 feet on the South line of said Block 52 to the point of beginning, containing approximately **902.49 acres**, all as more particularly outlined on a plat on file in the Office of Mineral Resources, Department of Natural Resources. All bearings, distances and coordinates are based on Louisiana Coordinate System of 1927, (North or South Zone).

NOTE: The above description of the Tract nominated for lease has been provided and corrected, where required, exclusively by the nomination party. Any mineral lease selected from this Tract and awarded by the Louisiana State Mineral Board shall be without warranty of any kind, either express, implied, or statutory, including, but not limited to, the implied warranties of merchantability and fitness for a particular purpose. Should the mineral lease awarded by the Louisiana State Mineral Board be subsequently modified, cancelled or abrogated due to the existence of conflicting leases, operating agreements, private claims or other future obligations or conditions which may affect all or any portion of the leased Tract, it shall not relieve the Lessee of the obligation to pay any bonus due thereon to the Louisiana State Mineral Board, nor shall the Louisiana State Mineral Board be obligated to refund any consideration paid by the Lessor prior to such modification, cancellation, or abrogation, including, but not limited to, bonuses, rentals and royalties.

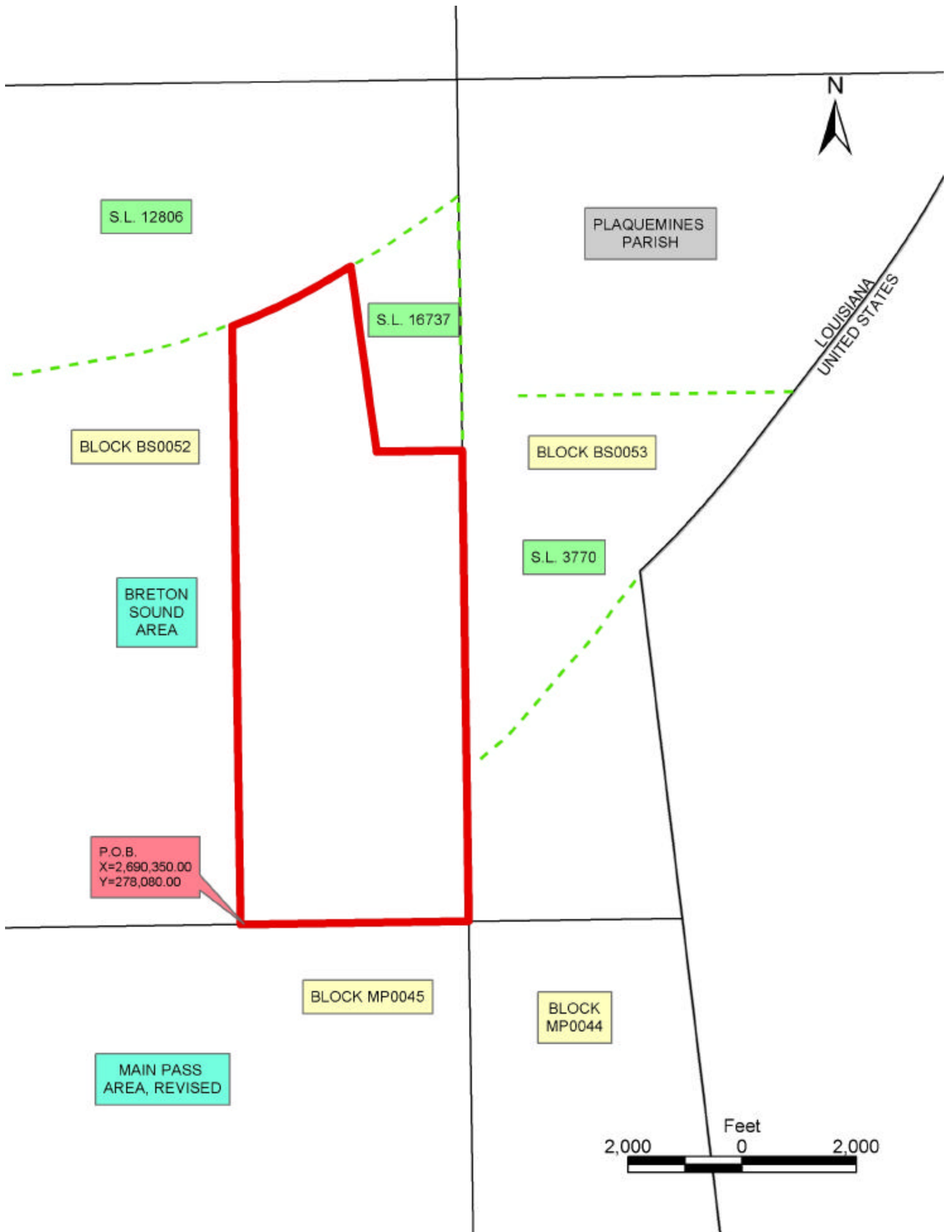
NOTE: The State of Louisiana does hereby reserve, and this lease shall be subject to, the imprescriptible right of surface use in the nature of a servitude in favor of the Department of Natural Resources, including its

Offices and Commissions, for the sole purpose of implementing, constructing, servicing and maintaining approved coastal zone management and/or restoration projects. Utilization of any and all rights derived under this lease by the mineral lessee, its agents, successors or assigns, shall not interfere with nor hinder the reasonable surface use by the Department of Natural Resources, its Offices or Commissions, as herein above reserved.

Applicant: Fleetwood Resources, Inc.

Bidder	Cash Payment	Price/ Acre	Rental	Oil	Gas	Other





**TRACT 35577 - Portion of Block 52, Breton Sound Area, Plaquemines Parish, Louisiana**

The beds and bottoms of all water bodies belonging to the State of Louisiana located in that portion of Block 52, Breton Sound Area, together with any present lands formed by accretion to the shoreline, located in Plaquemines Parish, Louisiana, and not presently under mineral lease on August 13, 2003, the geographical area of which is more fully described as follows: Beginning at a point on the South line of Block 52, Breton Sound Area, having Coordinates of X = 2,690,350.00 and Y = 278,080.00; thence West 10,607.20 feet on the South line of said Block 52 to a point having Coordinates of X = 2,679,742.80 and Y = 278,080.00; thence Northwesterly on a straight line to a point on the West line of said Block 52 having Coordinates of X = 2,679,600.00 and Y = 279,416.19; thence North 8,838.81 feet on the West line of said Block 52 to a point having Coordinates of X = 2,679,600.00 and Y = 288,255.00; thence East 3,650.00 feet to the Southwest corner of State Lease No. 12806, as amended, having Coordinates of X = 2,683,250.00 and Y = 288,255.00; thence along the boundary of said State Lease No. 12806 the following courses: South 79 degrees 02 minutes 24 seconds East 2,050.87 feet, Northeasterly on an arc having a radius of 6,073.33 feet and a chord bearing of North 88 degrees 54 minutes 47 seconds East 2,290.32 feet, North 78 degrees 45 minutes 57 seconds East 1,028.18 feet, and Northeasterly on an arc having a radius of 10,021.87 feet and a chord bearing of North 75 degrees 41 minutes 36 seconds East 1,845.38 feet to a point having Coordinates of X = 2,690,350.00 and Y = 288,564.86; thence South 10,484.86 feet to the point of beginning, containing approximately **2,473.12 acres**, all as more particularly outlined on a plat on file in the Office of Mineral Resources, Department of Natural Resources. All bearings, distances and coordinates are based on Louisiana Coordinate System of 1927, (North or South Zone).

NOTE: The above description of the Tract nominated for lease has been provided and corrected, where required, exclusively by the nomination party. Any mineral lease selected from this Tract and awarded by the Louisiana State Mineral Board shall be without warranty of any kind, either express, implied, or statutory, including, but not limited to, the implied warranties of merchantability and fitness for a particular purpose. Should the mineral lease awarded by the Louisiana State Mineral Board be subsequently modified, cancelled or abrogated due to the existence of conflicting leases, operating agreements, private claims or other future obligations or conditions which may affect all or any portion of the leased Tract, it shall not relieve the Lessee of the obligation to pay any bonus due thereon to the Louisiana State Mineral Board, nor shall the Louisiana State Mineral Board be obligated to refund any consideration paid by the Lessor prior to such modification, cancellation, or abrogation, including, but not limited to, bonuses, rentals and royalties.

NOTE: The State of Louisiana does hereby reserve, and this lease shall be subject to, the imprescriptible right of surface use in the nature of a

servitude in favor of the Department of Natural Resources, including its Offices and Commissions, for the sole purpose of implementing, constructing, servicing and maintaining approved coastal zone management and/or restoration projects. Utilization of any and all rights derived under this lease by the mineral lessee, its agents, successors or assigns, shall not interfere with nor hinder the reasonable surface use by the Department of Natural Resources, its Offices or Commissions, as herein above reserved.

Applicant: Fleetwood Resources, Inc.

Bidder	Cash Payment	Price/ Acre	Rental	Oil	Gas	Other



BRETON  
SOUND  
AREA

S.L. 12806

BLOCK BS0051

BLOCK BS0052

S.L. 17244

P.O.B.  
X=2,690,350.00  
Y=278,080.00

S.L. 17052

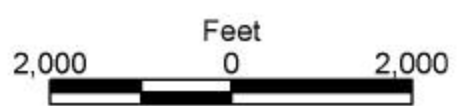
S.L. 17053

PLAQUEMINES PARISH

BLOCK MP0046

BLOCK MP0045

MAIN PASS  
AREA, REVISED



**TRACT 35578 - Portion of Block 53, Breton Sound Area, and Block 44, Main Pass Area, Revised, Plaquemines Parish, Louisiana**

The beds and bottoms of all water bodies belonging to the State of Louisiana located in that portion of Block 53, Breton Sound Area, and Block 44, Main Pass Area, Revised, together with any present lands formed by accretion to the shoreline, located in Plaquemines Parish, Louisiana, and not presently under mineral lease on August 13, 2003, the geographical area of which is more fully described as follows: Beginning at the Northwest corner of State Lease No. 17731 and a point on the West line of Block 44, Main Pass Area, Revised, having Coordinates of X = 2,694,350.00 and Y = 270,705.00; thence North 7,375.00 feet on the West line of said Block 44 to its Northwest corner, also being the Southwest corner of Block 53, Breton Sound Area, having Coordinates of X = 2,694,350.00 and Y = 278,080.00; thence North 3,900.00 feet on the West line of said Block 53 to the Southwest corner of State Lease No. 3370, as amended, having Coordinates of X = 2,694,350.00 and Y = 281,980.00; thence along the boundary of said State Lease No. 3770 the following courses: North 58 degrees 20 minutes 55 seconds East 1,715.11 feet and North 51 degrees 27 minutes 54 seconds East 2,078.68 feet to a point having Coordinates of X = 2,697,436 and Y = 284,175; thence Southeasterly on a straight line to a point on the South line of said Block 53, and the North line of said Block 44 having Coordinates of X = 2,698,087.39 and Y = 278,080.00; thence Southeasterly on a straight line to the Northeast corner of said State Lease No. 17731 having Coordinates of X = 2,698,875.58 and Y = 270,705.00; thence West 4,525.58 feet on the North line of said State Lease No. 17731 to the point of beginning, containing approximately **1,094.20 acres, LESS AND EXCEPT** that portion thereof, if any, lying seaward of the line three nautical miles from the coast line of Louisiana, as said three mile line has been decreed by the Supreme Court of the United States, as determined by a Special Master appointed therein, in litigation styled **United States v. State of Louisiana et al No. 9 Original**, in 1975, all as more particularly outlined on a plat in the Office of Mineral Resources, Department of Natural Resources. All bearings, distances and coordinates are based on the Louisiana Coordinate System of 1927, (South Zone).

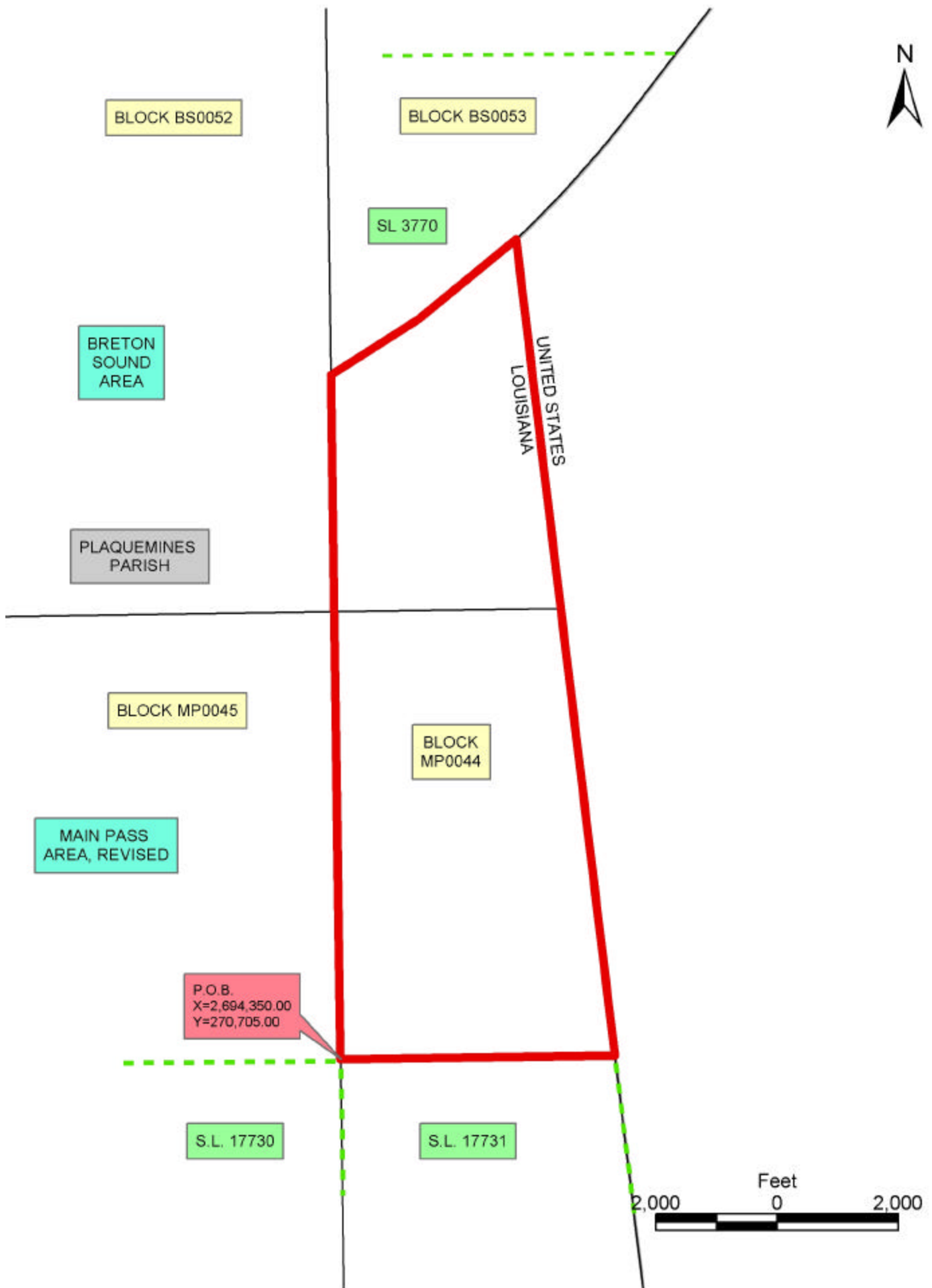
NOTE: The above description of the Tract nominated for lease has been provided and corrected, where required, exclusively by the nomination party. Any mineral lease selected from this Tract and awarded by the Louisiana State Mineral Board shall be without warranty of any kind, either express, implied, or statutory, including, but not limited to, the implied warranties of merchantability and fitness for a particular purpose. Should the mineral lease awarded by the Louisiana State Mineral Board be subsequently modified, cancelled or abrogated due to the existence of conflicting leases, operating agreements, private claims or other future obligations or conditions which may affect all or any portion of the leased Tract, it shall not relieve the Lessee of the obligation to pay any bonus due thereon to the Louisiana State Mineral Board, nor shall the Louisiana State Mineral Board be obligated to refund any consideration

paid by the Lessor prior to such modification, cancellation, or abrogation, including, but not limited to, bonuses, rentals and royalties.

NOTE: The State of Louisiana does hereby reserve, and this lease shall be subject to, the imprescriptible right of surface use in the nature of a servitude in favor of the Department of Natural Resources, including its Offices and Commissions, for the sole purpose of implementing, constructing, servicing and maintaining approved coastal zone management and/or restoration projects. Utilization of any and all rights derived under this lease by the mineral lessee, its agents, successors or assigns, shall not interfere with nor hinder the reasonable surface use by the Department of Natural Resources, its Offices or Commissions, as herein above reserved.

Applicant: Fleetwood Resources, Inc.

Bidder	Cash Payment	Price/ Acre	Rental	Oil	Gas	Other



**TRACT 35579 - Portion of Block 45, Main Pass Area, Revised, Plaquemines Parish, Louisiana**

The beds and bottoms of all water bodies belonging to the State of Louisiana located in that portion of Block 45, Main Pass Area, Revised, together with any present lands formed by accretion to the shoreline, located in Plaquemines Parish, Louisiana, and not presently under mineral lease on August 13, 2003, the geographical area of which is more fully described as follows: Beginning at a point within Block 45, Main Pass Area, Revised, being the Northwest corner of State Lease No. 17730 having Coordinates of X = 2,690,662.50 and Y = 270,705.00; thence West 10,131.51 feet to a point having Coordinates of X = 2,680,530.99 and Y = 270,705.00; thence Northwesterly on a straight line to a point on the South line of State Lease No. 17053, as amended, having Coordinates of X = 2,679,993.53 and Y = 275,734.00; thence along the boundary of said State Lease No. 17053 the following courses: East 786.47 feet and North 2,346.00 feet to its Northeast corner, and a point on the North line of Block 45, Main Pass Area, Revised, having Coordinates of X = 2,680,780.00 and Y = 278,080.00; thence East 13,570.00 feet on the North line of said Block 45 to its Northeast corner having Coordinates of X = 2,694,350.00 and Y = 278,080.00; thence South 7,375.00 feet on the East line of said Block 45 to the Northeast corner of said State Lease No. 17730 having Coordinates of X = 2,694,350.00 and Y = 270,705.00; thence West 3,687.50 feet on the North line of said State Lease No. 17330 to the point of beginning, containing approximately **2,357.27 acres**, all as more particularly outlined on a plat on file in the Office of Mineral Resources, Department of Natural Resources. All bearings, distances and coordinates are based on Louisiana Coordinate System of 1927, (North or South Zone).

NOTE: The above description of the Tract nominated for lease has been provided and corrected, where required, exclusively by the nomination party. Any mineral lease selected from this Tract and awarded by the Louisiana State Mineral Board shall be without warranty of any kind, either express, implied, or statutory, including, but not limited to, the implied warranties of merchantability and fitness for a particular purpose. Should the mineral lease awarded by the Louisiana State Mineral Board be subsequently modified, cancelled or abrogated due to the existence of conflicting leases, operating agreements, private claims or other future obligations or conditions which may affect all or any portion of the leased Tract, it shall not relieve the Lessee of the obligation to pay any bonus due thereon to the Louisiana State Mineral Board, nor shall the Louisiana State Mineral Board be obligated to refund any consideration paid by the Lessor prior to such modification, cancellation, or abrogation, including, but not limited to, bonuses, rentals and royalties.

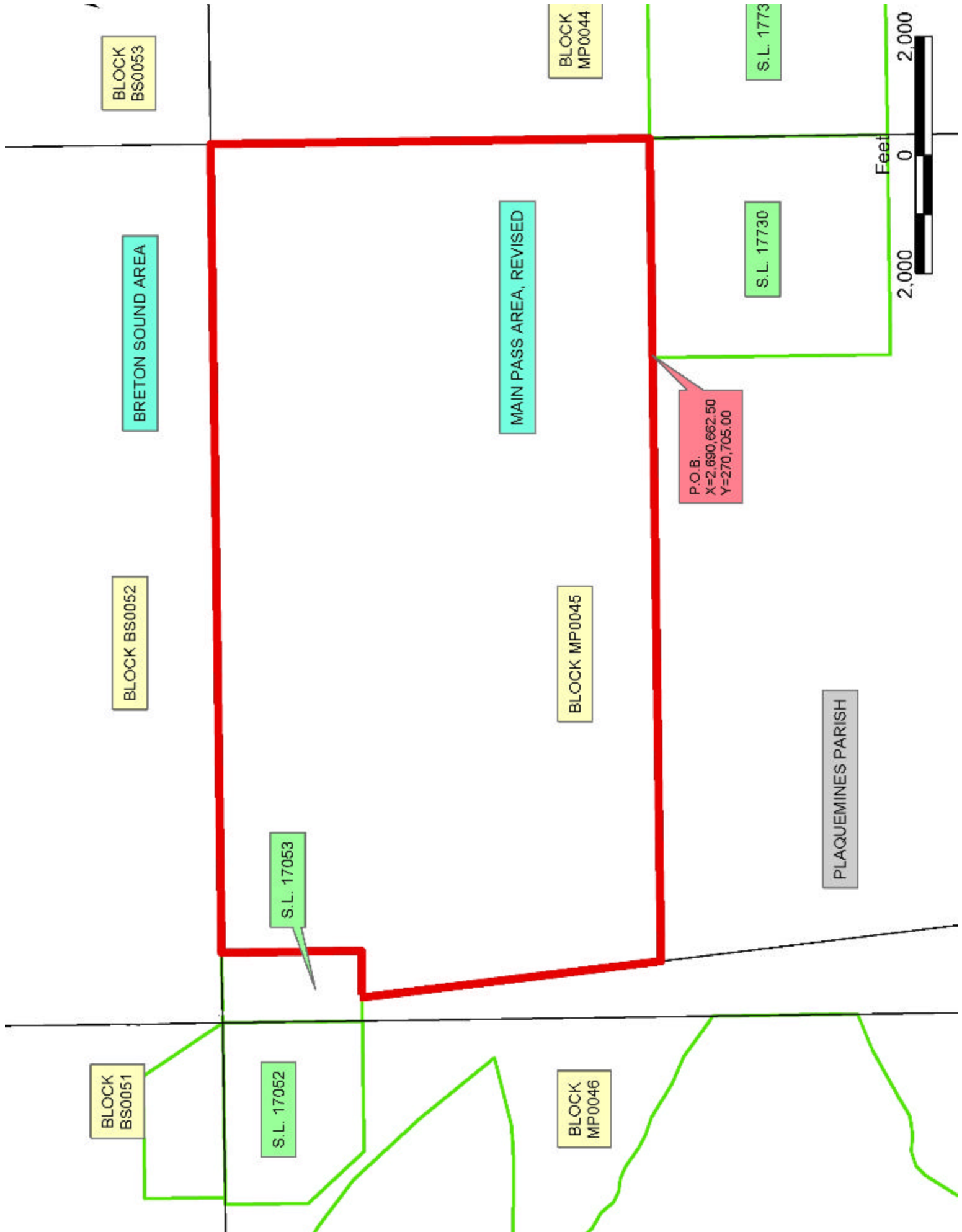
NOTE: The State of Louisiana does hereby reserve, and this lease shall be subject to, the imprescriptible right of surface use in the nature of a servitude in favor of the Department of Natural Resources, including its Offices and Commissions, for the sole purpose of implementing,



constructing, servicing and maintaining approved coastal zone management and/or restoration projects. Utilization of any and all rights derived under this lease by the mineral lessee, its agents, successors or assigns, shall not interfere with nor hinder the reasonable surface use by the Department of Natural Resources, its Offices or Commissions, as herein above reserved.

Applicant: Fleetwood Resources, Inc.

Bidder	Cash Payment	Price/ Acre	Rental	Oil	Gas	Other



**TRACT 35580 - Portion of Block 45, Main Pass Area, Revised, Plaquemines Parish, Louisiana**

The beds and bottoms of all water bodies belonging to the State of Louisiana located in that portion of Block 45, Main Pass Area, Revised, together with any present lands formed by accretion to the shoreline, located in Plaquemines Parish, Louisiana, and not presently under mineral lease on August 13, 2003, the geographical area of which is more fully described as follows: Beginning at a point within Block 45, Main Pass Area, Revised, being the Northwest corner of State Lease No. 17730 having Coordinates of X = 2,690,662.50 and Y = 270,705.00; thence along the boundary of said State Lease No. 17730 the following courses: South 3,990.00 feet and East 3,687.50 feet to its Southeast corner and a point on the East line of Block 45, Main Pass Area, Revised, having Coordinates of X = 2,694,350.00 and Y = 266,715.00; thence South 3,385.00 feet on the East line of said Block 45 to its Southeast corner having Coordinates of X = 2,694,350.00 and Y = 263,330.00; thence West 13,030.82 feet on the South line of said Block 45 to a point having Coordinates of X = 2,681,319.18 and Y = 263,330.00; thence Northwesterly on a straight line to a point having Coordinates of X = 2,680,530.99 and Y = 270,705.00; thence East 10,131.51 feet to the point of beginning, containing approximately **1,935.16 acres**, all as more particularly outlined on a plat on file in the Office of Mineral Resources, Department of Natural Resources. All bearings, distances and coordinates are based on Louisiana Coordinate System of 1927, (North or South Zone).

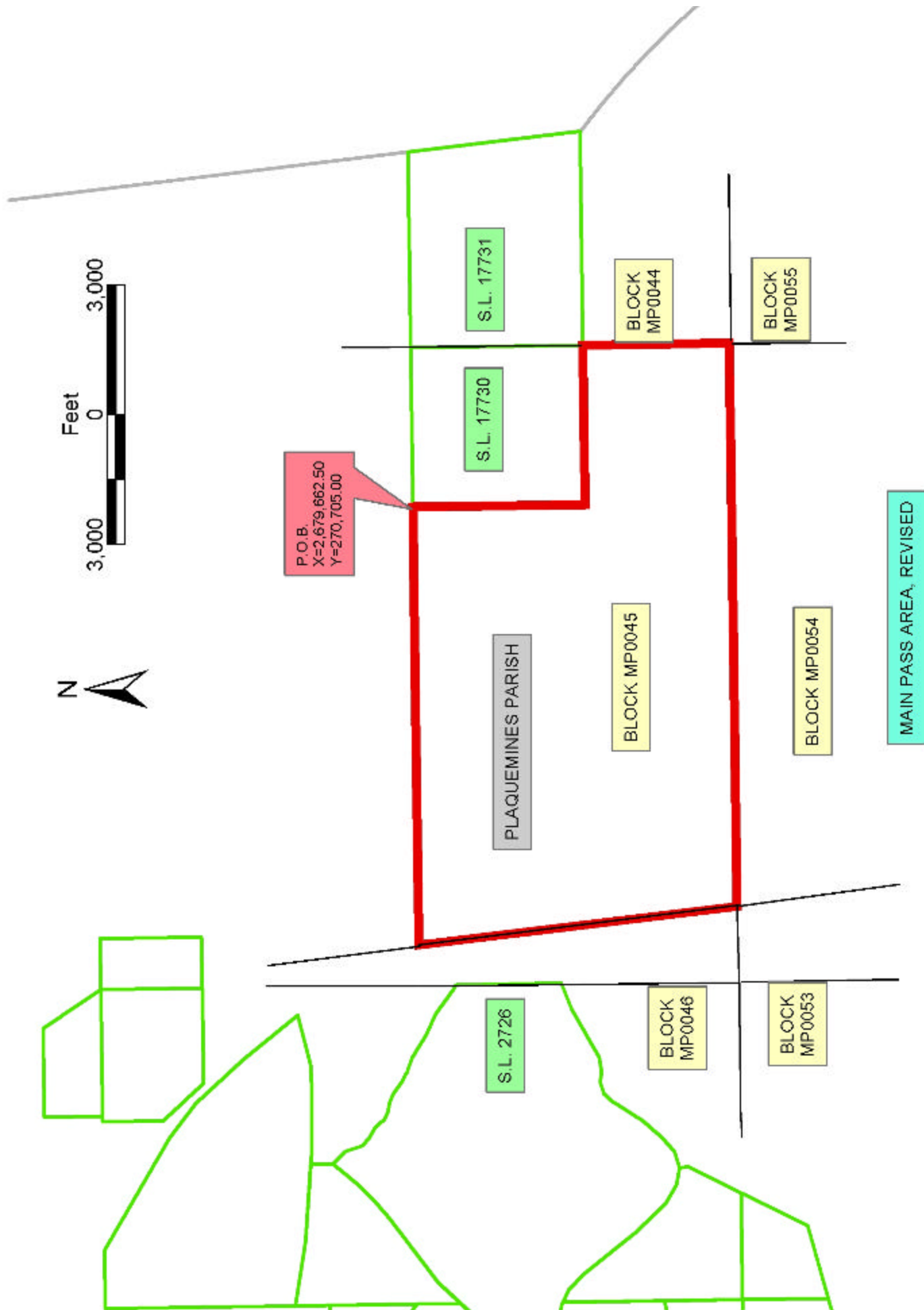
NOTE: The above description of the Tract nominated for lease has been provided and corrected, where required, exclusively by the nomination party. Any mineral lease selected from this Tract and awarded by the Louisiana State Mineral Board shall be without warranty of any kind, either express, implied, or statutory, including, but not limited to, the implied warranties of merchantability and fitness for a particular purpose. Should the mineral lease awarded by the Louisiana State Mineral Board be subsequently modified, cancelled or abrogated due to the existence of conflicting leases, operating agreements, private claims or other future obligations or conditions which may affect all or any portion of the leased Tract, it shall not relieve the Lessee of the obligation to pay any bonus due thereon to the Louisiana State Mineral Board, nor shall the Louisiana State Mineral Board be obligated to refund any consideration paid by the Lessor prior to such modification, cancellation, or abrogation, including, but not limited to, bonuses, rentals and royalties.

NOTE: The State of Louisiana does hereby reserve, and this lease shall be subject to, the imprescriptible right of surface use in the nature of a servitude in favor of the Department of Natural Resources, including its Offices and Commissions, for the sole purpose of implementing, constructing, servicing and maintaining approved coastal zone management and/or restoration projects. Utilization of any and all rights derived under this lease by the mineral lessee, its agents, successors or assigns,

shall not interfere with nor hinder the reasonable surface use by the Department of Natural Resources, its Offices or Commissions, as herein above reserved.

Applicant: Fleetwood Resources, Inc.

Bidder	Cash Payment	Price/ Acre	Rental	Oil	Gas	Other



**TRACT 35582 - Portion of Blocks 55, and 66, Main Pass Area, Revised, Plaquemines Parish, Louisiana**

The beds and bottoms of all water bodies belonging to the State of Louisiana located in that portion of Blocks 55, and 66, Main Pass Area, Revised, together with any present lands formed by accretion to the shoreline, located in Plaquemines Parish, Louisiana, and not presently under mineral lease on August 13, 2003, the geographical area of which is more fully described as follows: Beginning at a point on the East line of Block 66, Main Pass Area, Revised, having Coordinates of X = 2,709,100.00 and Y = 242,208.01; thence West 3,983.69 feet to a point on the Eastern boundary of State Lease No. 15840, as amended, having Coordinates of X = 2,705,116.31 and Y = 242,208.01; thence Northeasterly on an arc having a radius of 5,594.62 feet and a chord bearing of North 36 degrees 51 minutes 00 seconds East 806.52 feet on the boundary of said State Lease No. 15840 to the Southwest corner of State Lease No. 15087, as amended, having Coordinates of X = 2,705,600.00 and Y = 242,853.40; thence along the boundary of said State Lease No. 15087 the following courses: Northeasterly on an arc having a radius of 5,594.62 feet and a chord bearing of North 30 degrees 32 minutes 37 seconds East 424.21 feet and Northeasterly on an arc having a radius of 2,678.44 feet and a chord bearing of North 16 degrees 01 minutes 13 seconds East 884.55 feet to its Northeast corner, and a point on the boundary of said State Lease No. 15840 having Coordinates of X = 2,706,059.70 and Y = 244,068.94; thence along the boundary of said State Lease No. 15840 the following courses: Northeasterly on an arc having a radius of 2,678.44 feet and a chord bearing of North 02 degrees 45 minutes 17 seconds East 351.41 feet, Northwesterly on an arc having a radius of 1,533.17 feet and a chord bearing of North 29 degrees 07 minutes 44 seconds West 1,495.55 feet, Northwesterly on an arc having a radius of 3,373.27 feet and a chord bearing of North 75 degrees 29 minutes 40 seconds West 1,806.17 feet, and Southwesterly on an arc having a radius of 5,220.82 feet and a chord bearing of South 78 degrees 31 minutes 25 seconds West 1,913.25 feet to a point having Coordinates of X = 2,701,725.00 and Y = 245,798.07; thence North 2,781.93 feet to a point on the North line of said Block 66, and a point on the South line of Block 55, Main Pass Area, Revised, and a point on the South line of State Lease No. 16779 and the Northeast corner of State Lease No. 16780 having Coordinates of X = 2,701,725.00 and Y = 248,580.00; thence East 3,442.00 feet on the South line of said Block 55 and the South line of said State Lease No. 16779 to its southeast corner having Coordinates of X = 2,705,167.00 and Y = 248,580.00; thence along the boundary of said State Lease No. 16779 the following courses, North 7,375.00 feet and West 399.00 feet to a point having Coordinates of X = 2,704,468.00 and Y = 255,955.00; thence North 4,579.00 feet to a point having Coordinates of X = 2,704,468 and Y = 260,534; thence along an arc having a radius of 18,240.60 feet and a center at X = 2,689,305 and Y = 250,395 to a point having Coordinates of X = 2,707,507 and Y = 251,577; thence along an arc having a radius of 18,240.60 feet and a center at X = 2,700,735 and Y = 234,640 to a point on the East line of said Block 55 having Coordinates of X = 2,709,100.00 and Y = 250,849.48; thence South

2,269.48 feet on the East line of said Block 55 to its Southeast corner, and the Northeast corner of said Block 66 having Coordinates of X = 2,709,100.00 and Y = 248,580.00; thence South 6,371.99 feet on the East line of said Block 66 to the point of beginning, containing approximately **1,313.81 acres, LESS AND EXCEPT** that portion thereof, if any, lying seaward of the line three nautical miles from the coast line of Louisiana, as said three mile line has been decreed by the Supreme Court of the United States, as determined by a Special Master appointed therein, in litigation styled **United States v. State of Louisiana et al No. 9 Original**, in 1975, all as more particularly outlined on a plat in the Office of Mineral Resources, Department of Natural Resources. All bearings, distances and coordinates are based on the Louisiana Coordinate System of 1927, (South Zone).

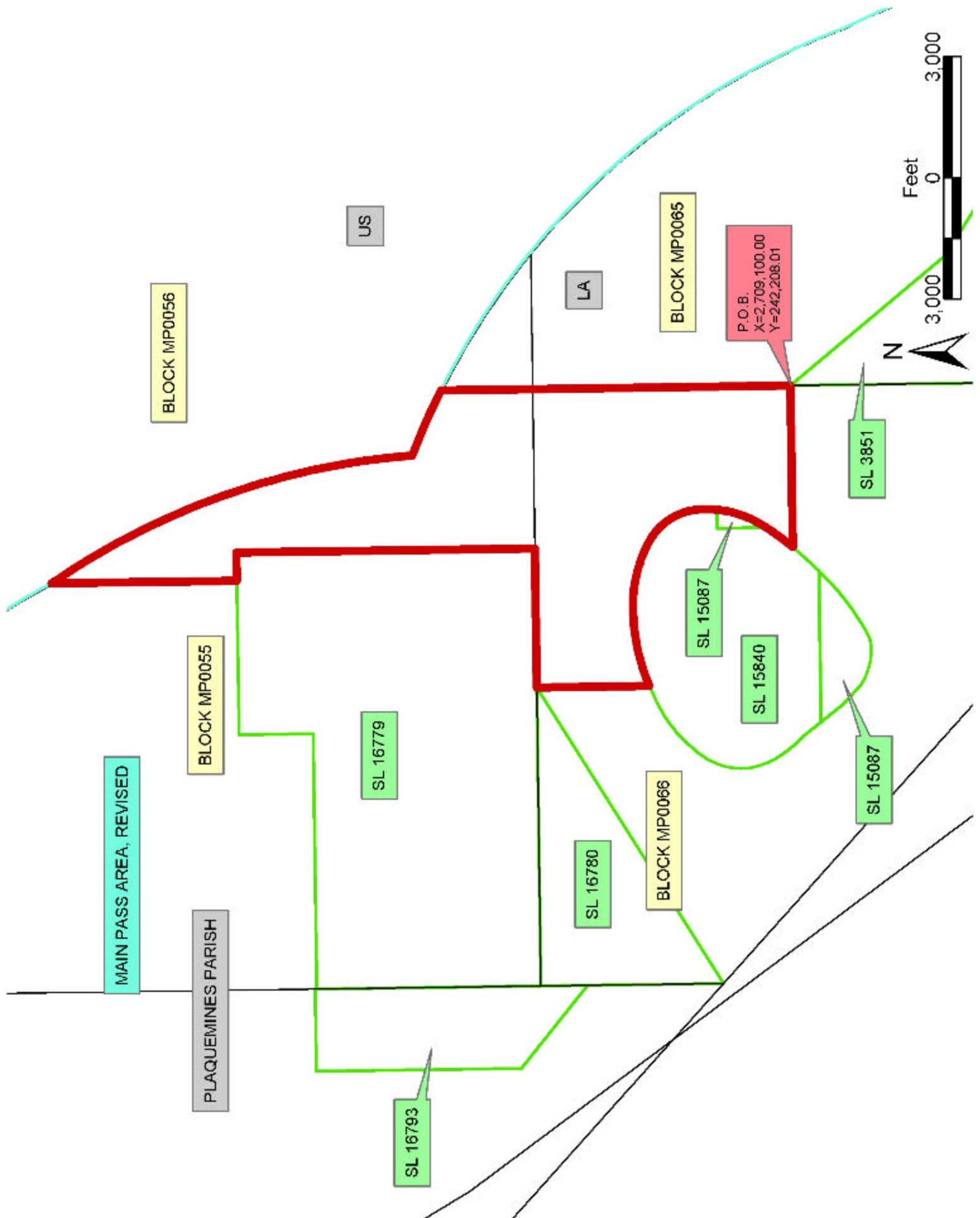
NOTE: The above description of the Tract nominated for lease has been provided and corrected, where required, exclusively by the nomination party. Any mineral lease selected from this Tract and awarded by the Louisiana State Mineral Board shall be without warranty of any kind, either express, implied, or statutory, including, but not limited to, the implied warranties of merchantability and fitness for a particular purpose. Should the mineral lease awarded by the Louisiana State Mineral Board be subsequently modified, cancelled or abrogated due to the existence of conflicting leases, operating agreements, private claims or other future obligations or conditions which may affect all or any portion of the leased Tract, it shall not relieve the Lessee of the obligation to pay any bonus due thereon to the Louisiana State Mineral Board, nor shall the Louisiana State Mineral Board be obligated to refund any consideration paid by the Lessor prior to such modification, cancellation, or abrogation, including, but not limited to, bonuses, rentals and royalties.

NOTE: The State of Louisiana does hereby reserve, and this lease shall be subject to, the imprescriptible right of surface use in the nature of a servitude in favor of the Department of Natural Resources, including its Offices and Commissions, for the sole purpose of implementing, constructing, servicing and maintaining approved coastal zone management and/or restoration projects. Utilization of any and all rights derived under this lease by the mineral lessee, its agents, successors or assigns, shall not interfere with nor hinder the reasonable surface use by the Department of Natural Resources, its Offices or Commissions, as herein above reserved.

Applicant: Fleetwood Resources, Inc.

Bidder	Cash Payment	Price/ Acre	Rental	Oil	Gas	Other





**TRACT 35583 - Portion of Blocks 56, and 65, Main Pass Area, Revised, Plaquemines Parish, Louisiana**

The beds and bottoms of all water bodies belonging to the State of Louisiana located in that portion of Blocks 56, and 65, Main Pass Area, Revised, together with any present lands formed by accretion to the shoreline, located in Plaquemines Parish, Louisiana, and not presently under mineral lease on August 13, 2003, the geographical area of which is more fully described as follows: Beginning at the Northwest corner of State Lease No. 3851, as amended, and a point on the West line of Block 65, Main Pass Area, Revised, having Coordinates of X = 2,709,100.00 and Y = 242,208.01; thence North 6,371.99 feet on the West line of said Block 65 to its Northwest corner and the Southwest corner of Block 56, Main Pass Area, Revised, having Coordinates of X = 2,709,100.00 and Y = 248,580.00; thence North 2,269.48 feet on the West line of said Block 56 to a point having Coordinates of X = 2,709,100.00 and Y = 250,849.48; thence along an arc having a radius of 18,240.60 feet and a center at X = 2,700,735 and Y = 234,640 to a point on the South line of said Block 56, and a point on the North line of said Block 65, having Coordinates of X = 2,712,499.08 and Y = 248,580.00; thence along an arc having a radius of 18,240.60 feet and a center at X = 2,700,735 and Y = 234,640 to a point having Coordinates of X = 2,717,908 and Y = 240,788; thence along an arc having a radius of 18,240.60 feet and a center at X = 2,701,500 and Y = 232,820 to a point having Coordinates of X = 2,719,022 and Y = 237,890; thence along an arc having a radius of 18,240.60 feet and a center at X = 2,707,635 and Y = 223,640 to a point having Coordinates of X = 2,719,640.00 and Y = 237,373.48; thence South 3,543.48 feet to a point on the South line of said Block 65 having Coordinates of X = 2,719,640.00 and Y = 233,830.00; thence West 3,489.02 feet on the South line of said Block 65 to the Southeast corner of said State Lease No. 3851 having Coordinates of X = 2,716,150.98 and Y = 233,830.00; thence along the boundary of said State Lease No. 3851 the following courses: North 30 degrees 02 minutes 00 seconds West 3,715.60 feet, North 57 degrees 40 minutes 10 seconds West 2,379.38 feet, and North 39 degrees 16 minutes 52 seconds West 5,023.95 feet to the point of beginning, containing approximately **2,167.59 acres, LESS AND EXCEPT** that portion thereof, if any, lying seaward of the line three nautical miles from the coast line of Louisiana, as said three mile line has been decreed by the Supreme Court of the United States, as determined by a Special Master appointed therein, in litigation styled **United States v. State of Louisiana et al No. 9 Original**, in 1975, all as more particularly outlined on a plat in the Office of Mineral Resources, Department of Natural Resources. All bearings, distances and coordinates are based on the Louisiana Coordinate System of 1927, (South Zone).

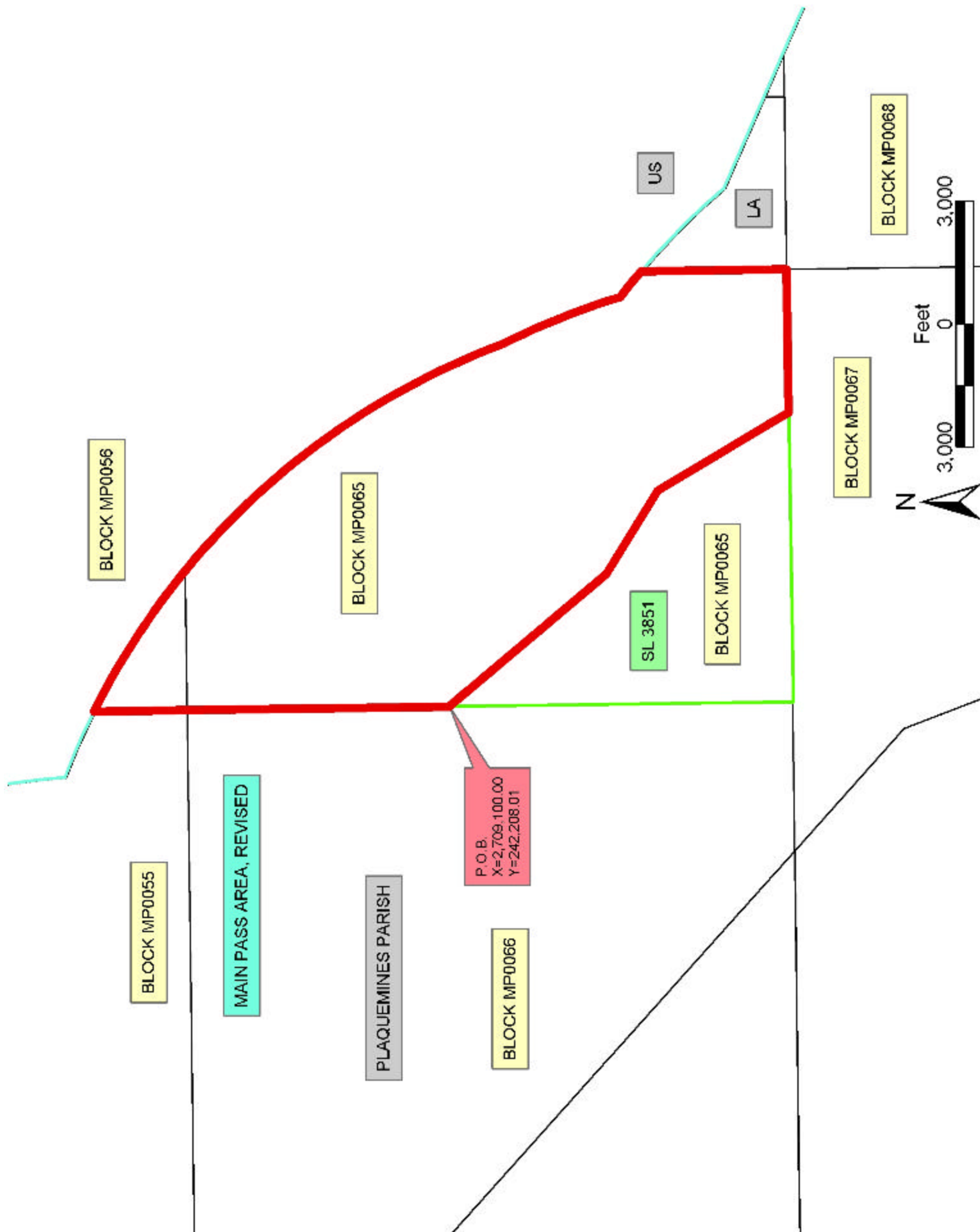
NOTE: The above description of the Tract nominated for lease has been provided and corrected, where required, exclusively by the nomination party. Any mineral lease selected from this Tract and awarded by the Louisiana State Mineral Board shall be without warranty of any kind, either express, implied, or statutory, including, but not limited to, the

implied warranties of merchantability and fitness for a particular purpose. Should the mineral lease awarded by the Louisiana State Mineral Board be subsequently modified, cancelled or abrogated due to the existence of conflicting leases, operating agreements, private claims or other future obligations or conditions which may affect all or any portion of the leased Tract, it shall not relieve the Lessee of the obligation to pay any bonus due thereon to the Louisiana State Mineral Board, nor shall the Louisiana State Mineral Board be obligated to refund any consideration paid by the Lessor prior to such modification, cancellation, or abrogation, including, but not limited to, bonuses, rentals and royalties.

NOTE: The State of Louisiana does hereby reserve, and this lease shall be subject to, the imprescriptible right of surface use in the nature of a servitude in favor of the Department of Natural Resources, including its Offices and Commissions, for the sole purpose of implementing, constructing, servicing and maintaining approved coastal zone management and/or restoration projects. Utilization of any and all rights derived under this lease by the mineral lessee, its agents, successors or assigns, shall not interfere with nor hinder the reasonable surface use by the Department of Natural Resources, its Offices or Commissions, as herein above reserved.

Applicant: Fleetwood Resources, Inc.

Bidder	Cash Payment	Price/ Acre	Rental	Oil	Gas	Other



**TRACT 35584 - Portion of Block 66, Main Pass Area, Revised, Plaquemines Parish, Louisiana**

The beds and bottoms of all water bodies belonging to the State of Louisiana located in that portion of Block 66, Main Pass Area, Revised, together with any present lands formed by accretion to the shoreline, located in Plaquemines Parish, Louisiana, and not presently under mineral lease on August 13, 2003, the geographical area of which is more fully described as follows: Beginning at a point on the East line of Block 66, Main Pass Area, Revised, having Coordinates of X = 2,709,100.00 and Y = 242,208.01; thence South 8,378.01 feet on the East line of said Block 66 to its Southeast corner having Coordinates of X = 2,709,100.00 and Y = 233,830.00; thence West 3,648.53 feet and Northwesterly approximately 15,102 feet on the Southern boundary of said Block 66 to its Southwest corner, and the Southwest corner of State Lease No. 16780; thence Northeasterly approximately 8,645 feet on the Southern boundary of said State Lease No. 16780 to its Northeast corner, and a point on the North line of said Block 66 having Coordinates of X = 2,701,725.00 and Y = 248,580.00; thence South 2,781.93 feet to a point on the Northern boundary of State Lease No. 15840, as amended having Coordinates of X = 2,701,725.00 and Y = 245,798.07; thence along the boundary of said State Lease No. 15840 the following courses: Southwesterly on an arc having a radius of 5,220.82 feet and a chord bearing of South 65 degrees 49 minutes 56 seconds West 388.67 feet, Southwesterly on an arc having a radius of 3,552.17 feet and a chord bearing of South 50 degrees 03 minutes 51 seconds West 1,893.67 feet, Southwesterly on an arc having a radius of 1,726.09 feet and a chord bearing of South 14 degrees 32 minutes 24 seconds West 1,014.91 feet, Southeasterly on an arc having a radius of 1,823.67 feet and a chord bearing of South 19 degrees 11 minutes 23 seconds East 902.54 feet, Southeasterly on an arc having a radius of 3,108.73 feet and a chord bearing of South 39 degrees 26 minutes 33 seconds East 720.49 feet, and South 37 degrees 53 minutes 30 seconds East 586.95 feet to its Southwest corner, and the Northwest corner of the Southern portion of State Lease No. 15087, as amended, having Coordinates of X = 2,700,778.48 and Y = 241,568.94; thence along the boundary of said State Lease No. 15087 the following courses: South 37 degrees 53 minutes 30 seconds East 258.75 feet, Southeasterly on an arc having a radius of 4,964.82 feet and a chord bearing of South 41 degrees 31 minutes 03 seconds East 852.08 feet, Southeasterly on an arc having a radius of 1,382.25 feet and a chord bearing of South 61 degrees 21 minutes 18 seconds East 717.18 feet, Northeasterly on an arc having a radius of 1,028.74 feet and a chord bearing of North 84 degrees 41 minutes 03 seconds East 939.04 feet, Northeasterly on an arc having a radius of 3,596.56 feet and a chord bearing of North 59 degrees 12 minutes 03 seconds East 573.01 feet, and Northeasterly on an arc having a radius of 7,553.05 feet and a chord bearing of North 49 degrees 52 minutes 49 seconds East 1,250.18 feet to its Northeast corner, and the Southeast corner of said State Lease No. 15840 having Coordinates of X = 2,704,514.81 and Y = 241,568.94; thence along the boundary of said State Lease No. 15840 the following courses: Northeasterly on an arc having a

radius of 7,553.05 feet and a chord bearing of North 43 degrees 23 minutes 30 seconds East 459.08 feet, Northeasterly on an arc having a radius of 5,594.62 feet and a chord bearing of North 43 degrees 07 minutes 37 seconds East 418.54 feet to a point having Coordinates of X = 2,705,116.31 and Y = 242,208.01; thence East 3,983.69 feet to the point of beginning, containing approximately **1,965.37 acres**, all as more particularly outlined on a plat on file in the Office of Mineral Resources, Department of Natural Resources. All bearings, distances and coordinates are based on Louisiana Coordinate System of 1927, (North or South Zone).

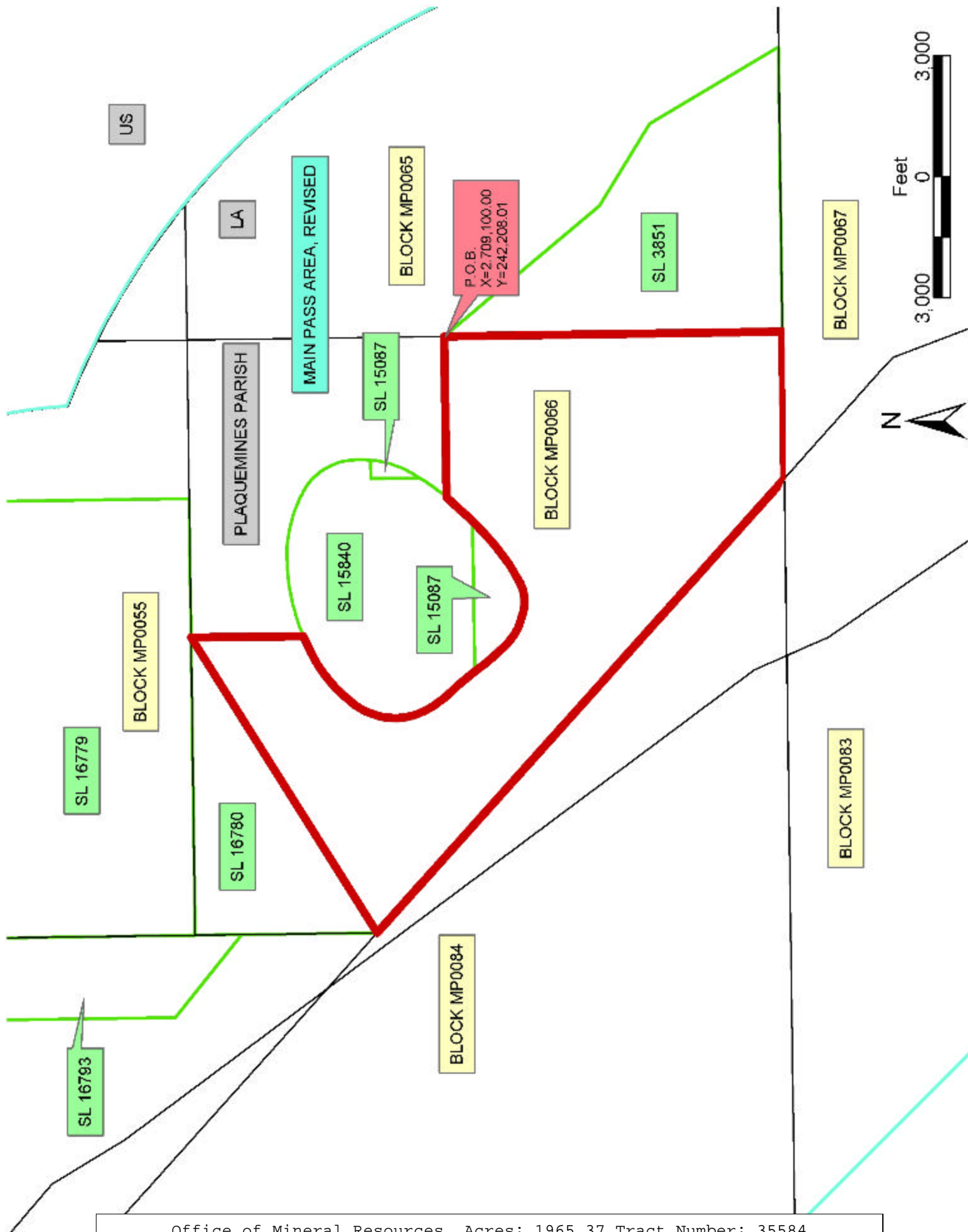
NOTE: The above description of the Tract nominated for lease has been provided and corrected, where required, exclusively by the nomination party. Any mineral lease selected from this Tract and awarded by the Louisiana State Mineral Board shall be without warranty of any kind, either express, implied, or statutory, including, but not limited to, the implied warranties of merchantability and fitness for a particular purpose. Should the mineral lease awarded by the Louisiana State Mineral Board be subsequently modified, cancelled or abrogated due to the existence of conflicting leases, operating agreements, private claims or other future obligations or conditions which may affect all or any portion of the leased Tract, it shall not relieve the Lessee of the obligation to pay any bonus due thereon to the Louisiana State Mineral Board, nor shall the Louisiana State Mineral Board be obligated to refund any consideration paid by the Lessor prior to such modification, cancellation, or abrogation, including, but not limited to, bonuses, rentals and royalties.

NOTE: The State of Louisiana does hereby reserve, and this lease shall be subject to, the imprescriptible right of surface use in the nature of a servitude in favor of the Department of Natural Resources, including its Offices and Commissions, for the sole purpose of implementing, constructing, servicing and maintaining approved coastal zone management and/or restoration projects. Utilization of any and all rights derived under this lease by the mineral lessee, its agents, successors or assigns, shall not interfere with nor hinder the reasonable surface use by the Department of Natural Resources, its Offices or Commissions, as herein above reserved.

NOTE: The Department of Wildlife and Fisheries has designated certain areas in the coastal waters of the State of Louisiana as Oyster Seed Bed Areas. The exact location of those Seed Bed Areas must be obtained from the Department of Wildlife and Fisheries and any work done under a mineral lease from the State of Louisiana may necessarily be conducted in conformity with the rules and regulations promulgated by the said Department of Wildlife and Fisheries for Oyster Seed Bed Areas.

Applicant: Fleetwood Resources, Inc.

Bidder	Cash Payment	Price/ Acre	Rental	Oil	Gas	Other





**TRACT 35585 - Portion of Block 40, South Pass Area, Plaquemines Parish, Louisiana**

The beds and bottoms of all water bodies belonging to the State of Louisiana located in that portion of Block 40, South Pass Area, together with any present lands formed by accretion to the shoreline, located in Plaquemines Parish, Louisiana, and not presently under mineral lease on August 13, 2003, the geographical area of which is more fully described as follows: Beginning at the Southeast corner of Block 40, South Pass Area, having Coordinates of X = 2,630,686.00 and Y = 96,908.00; thence West 8,069.14 feet on the South line of said Block 40 to the Southeast corner of State Lease No. 17195 having Coordinates of X = 2,622,616.86 and Y = 96,908.00; thence North 38 degrees 51 minutes 34 seconds East 9,476.20 feet on the East line of said State Lease No. 17195 to its Northeast corner, also being a point on the South line of State Lease No. 17194 having Coordinates of X = 2,628,562.34 and Y = 104,287.00; thence East 2,123.66 feet on the South line of said State Lease No. 17194 to its Southeast corner, also being a point on the East line of said Block 40 having Coordinates of X = 2,630,686.00 and Y = 104,287.00; thence South 7,379.00 feet on the East line of said Block 40 to the point of beginning, containing approximately **863.32 acres**, all as more particularly outlined on a plat on file in the Office of Mineral Resources, Department of Natural Resources. All bearings, distances and coordinates are based on Louisiana Coordinate System of 1927, (North or South Zone).

NOTE: The above description of the Tract nominated for lease has been provided and corrected, where required, exclusively by the nomination party. Any mineral lease selected from this Tract and awarded by the Louisiana State Mineral Board shall be without warranty of any kind, either express, implied, or statutory, including, but not limited to, the implied warranties of merchantability and fitness for a particular purpose. Should the mineral lease awarded by the Louisiana State Mineral Board be subsequently modified, cancelled or abrogated due to the existence of conflicting leases, operating agreements, private claims or other future obligations or conditions which may affect all or any portion of the leased Tract, it shall not relieve the Lessee of the obligation to pay any bonus due thereon to the Louisiana State Mineral Board, nor shall the Louisiana State Mineral Board be obligated to refund any consideration paid by the Lessor prior to such modification, cancellation, or abrogation, including, but not limited to, bonuses, rentals and royalties.

NOTE: The State of Louisiana does hereby reserve, and this lease shall be subject to, the imprescriptible right of surface use in the nature of a servitude in favor of the Department of Natural Resources, including its Offices and Commissions, for the sole purpose of implementing, constructing, servicing and maintaining approved coastal zone management and/or restoration projects. Utilization of any and all rights derived under this lease by the mineral lessee, its agents, successors or assigns, shall not interfere with nor hinder the reasonable surface use by the

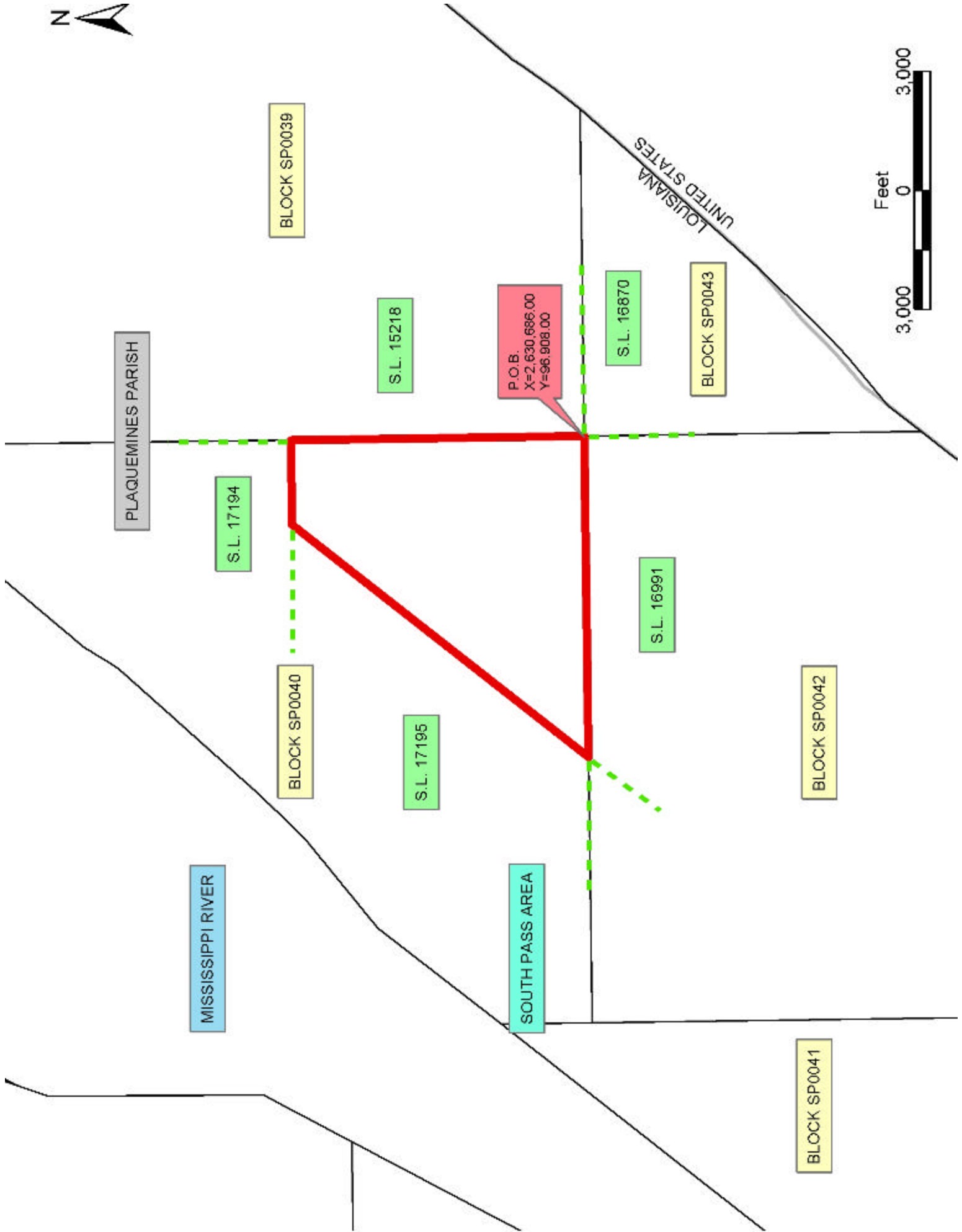
Department of Natural Resources, its Offices or Commissions, as herein above reserved.

NOTE: It appears, according to our records, that a portion of this Tract is located within the restrictive safety fairway area as set out by the Corps of Engineers, U.S. Army and/or the restrictive anchorage area as set out by the U.S. Coast Guard.

NOTE: The Department of Wildlife and Fisheries has designated certain areas in the coastal waters of the State of Louisiana as Oyster Seed Bed Areas. The exact location of those Seed Bed Areas must be obtained from the Department of Wildlife and Fisheries and any work done under a mineral lease from the State of Louisiana may necessarily be conducted in conformity with the rules and regulations promulgated by the said Department of Wildlife and Fisheries for Oyster Seed Bed Areas.

Applicant: Bradley Broussard Land Services, Inc.

Bidder	Cash Payment	Price/ Acre	Rental	Oil	Gas	Other



**TRACT 35586 - Portion of Blocks 41, and 42, South Pass Area, Plaquemines Parish, Louisiana**

The beds and bottoms of all water bodies belonging to the State of Louisiana located in that portion of Blocks 41, and 42, South Pass Area, together with any present lands formed by accretion to the shoreline, located in Plaquemines Parish, Louisiana, and not presently under mineral lease on August 13, 2003, the geographical area of which is more fully described as follows: Beginning at the Northwest corner of Block 42, South Pass Area, having Coordinates of X = 2,615,928.00 and Y = 96,908.00; thence East 6,688.86 feet on the North line of said Block 42 to the Northwest corner of State Lease No. 16991 having Coordinates of X = 2,622,616.86 and Y = 96,908.00; thence along the boundary of said State Lease No. 16991 the following courses: South 38 degrees 51 minutes 34 seconds West 5,879.48 feet, South 29 degrees 55 minutes 24 seconds East 3,231.50 feet, and East 1,498.15 feet to the Northwest corner of State Lease No. 17197 having Coordinates of X = 2,622,038.15 and Y = 89,529.00; thence South 179.00 feet on the West line of said State Lease No. 17197 to a point having Coordinates of X = 2,622,038.15 and Y = 89,350.00; thence West 5,511.01 feet to the Southeast corner of State Lease No. 12967, as amended, having Coordinates of X = 2,616,527.14 and Y = 89,350.00; thence along the boundary of said State Lease No. 12967 the following courses: North 2,640.00 feet and West 599.14 feet to its Northwest corner, also being a point on the West line of said Block 42, and a point on the East line of Block 41, South Pass Area, and also being the Northeast corner of State Lease No. 12966, as amended, having Coordinates of X = 2,615,928.00 and Y = 91,990.00; thence along the boundary of said State Lease No. 12966 the following courses: West 2,040.86 feet and South 2,640.00 feet to its Southwest corner having Coordinates of X = 2,613,887.14 and Y = 89,350.00; thence West 494.40 feet to the most Southerly Southeast corner of State Lease No. 17360 having Coordinates of X = 2,613,392.74 and Y = 89,350.00; thence along the boundary of said State Lease No. 17360 the following courses: North 07 degrees 18 minutes 59 seconds East 3,690.58 feet and North 54 degrees 24 minutes 20 seconds East 2,539.82 feet to a corner, also being a point on the East line of said Block 41 having Coordinates of X = 2,615,928.00 and Y = 94,488.82; thence North 853.28 feet on the East line of said Block 41 and the boundary of said State Lease No. 17360 to its Northeast corner, also being the Southeast corner of State Lease No. 17193 having Coordinates of X = 2,615,928.00 and Y = 95,342.10; thence North 1,565.90 feet on the boundary of said State Lease No. 17193 and the East line of said Block 41 to the point of beginning, containing approximately **847.33 acres**, all as more particularly outlined on a plat on file in the Office of Mineral Resources, Department of Natural Resources. All bearings, distances and coordinates are based on Louisiana Coordinate System of 1927, (North or South Zone).

NOTE: The above description of the Tract nominated for lease has been provided and corrected, where required, exclusively by the nomination party. Any mineral lease selected from this Tract and awarded by the

Louisiana State Mineral Board shall be without warranty of any kind, either express, implied, or statutory, including, but not limited to, the implied warranties of merchantability and fitness for a particular purpose. Should the mineral lease awarded by the Louisiana State Mineral Board be subsequently modified, cancelled or abrogated due to the existence of conflicting leases, operating agreements, private claims or other future obligations or conditions which may affect all or any portion of the leased Tract, it shall not relieve the Lessee of the obligation to pay any bonus due thereon to the Louisiana State Mineral Board, nor shall the Louisiana State Mineral Board be obligated to refund any consideration paid by the Lessor prior to such modification, cancellation, or abrogation, including, but not limited to, bonuses, rentals and royalties.

NOTE: The State of Louisiana does hereby reserve, and this lease shall be subject to, the imprescriptible right of surface use in the nature of a servitude in favor of the Department of Natural Resources, including its Offices and Commissions, for the sole purpose of implementing, constructing, servicing and maintaining approved coastal zone management and/or restoration projects. Utilization of any and all rights derived under this lease by the mineral lessee, its agents, successors or assigns, shall not interfere with nor hinder the reasonable surface use by the Department of Natural Resources, its Offices or Commissions, as herein above reserved.

NOTE: It appears, according to our records, that a portion of this Tract is located within the restrictive safety fairway area as set out by the Corps of Engineers, U.S. Army and/or the restrictive anchorage area as set out by the U.S. Coast Guard.

NOTE: The Department of Wildlife and Fisheries has designated certain areas in the coastal waters of the State of Louisiana as Oyster Seed Bed Areas. The exact location of those Seed Bed Areas must be obtained from the Department of Wildlife and Fisheries and any work done under a mineral lease from the State of Louisiana may necessarily be conducted in conformity with the rules and regulations promulgated by the said Department of Wildlife and Fisheries for Oyster Seed Bed Areas.

Applicant: Bradley Broussard Land Services, Inc.

Bidder	Cash Payment	Price/ Acre	Rental	Oil	Gas	Other

