

**TRACT 35571 - Portion of Block 54, Main Pass Area, Revised, Plaquemines Parish, Louisiana**

The beds and bottoms of all water bodies belonging to the State of Louisiana located in that portion of Block 54, Main Pass Area, Revised, together with any present lands formed by accretion to the shoreline, located in Plaquemines Parish, Louisiana, and not presently under mineral lease on August 13, 2003, the geographical area of which is more fully described as follows: Beginning at a point on the North line of Block 54, Main Pass Area, Revised, having Coordinates of X = 2,686,900.00 and Y = 263,330.00; thence South 9,944.76 feet to a point having Coordinates of X = 2,686,900.00 and Y = 253,385.24; thence Northwesterly on a straight line to a point having Coordinates of X = 2,681,915.00 and Y = 257,755.00; thence Northwesterly on a straight line to a point on the North line of said Block 54 having Coordinates of X = 2,681,319.18 and Y = 263,330.00; thence East 5,580.82 feet on the North line of said Block 54 to the point of beginning, containing approximately **926.17 acres**, all as more particularly outlined on a plat on file in the Office of Mineral Resources, Department of Natural Resources. All bearings, distances and coordinates are based on Louisiana Coordinate System of 1927, (North or South Zone).

NOTE: The above description of the Tract nominated for lease has been provided and corrected, where required, exclusively by the nomination party. Any mineral lease selected from this Tract and awarded by the Louisiana State Mineral Board shall be without warranty of any kind, either express, implied, or statutory, including, but not limited to, the implied warranties of merchantability and fitness for a particular purpose. Should the mineral lease awarded by the Louisiana State Mineral Board be subsequently modified, cancelled or abrogated due to the existence of conflicting leases, operating agreements, private claims or other future obligations or conditions which may affect all or any portion of the leased Tract, it shall not relieve the Lessee of the obligation to pay any bonus due thereon to the Louisiana State Mineral Board, nor shall the Louisiana State Mineral Board be obligated to refund any consideration paid by the Lessor prior to such modification, cancellation, or abrogation, including, but not limited to, bonuses, rentals and royalties.

NOTE: The State of Louisiana does hereby reserve, and this lease shall be subject to, the imprescriptible right of surface use in the nature of a servitude in favor of the Department of Natural Resources, including its Offices and Commissions, for the sole purpose of implementing, constructing, servicing and maintaining approved coastal zone management and/or restoration projects. Utilization of any and all rights derived under this lease by the mineral lessee, its agents, successors or assigns, shall not interfere with nor hinder the reasonable surface use by the Department of Natural Resources, its Offices or Commissions, as herein above reserved.

NOTE: The Department of Wildlife and Fisheries has designated certain areas in the coastal waters of the State of Louisiana as Oyster Seed Bed Areas. The exact location of those Seed Bed Areas must be obtained from the Department of Wildlife and Fisheries and any work done under a mineral lease from the State of Louisiana may necessarily be conducted in conformity with the rules and regulations promulgated by the said Department of Wildlife and Fisheries for Oyster Seed Bed Areas.

Applicant: Fleetwood Resources, Inc.

Bidder	Cash Payment	Price/ Acre	Rental	Oil	Gas	Other



**TRACT 35573 - Caldwell and Ouachita Parishes, Louisiana**

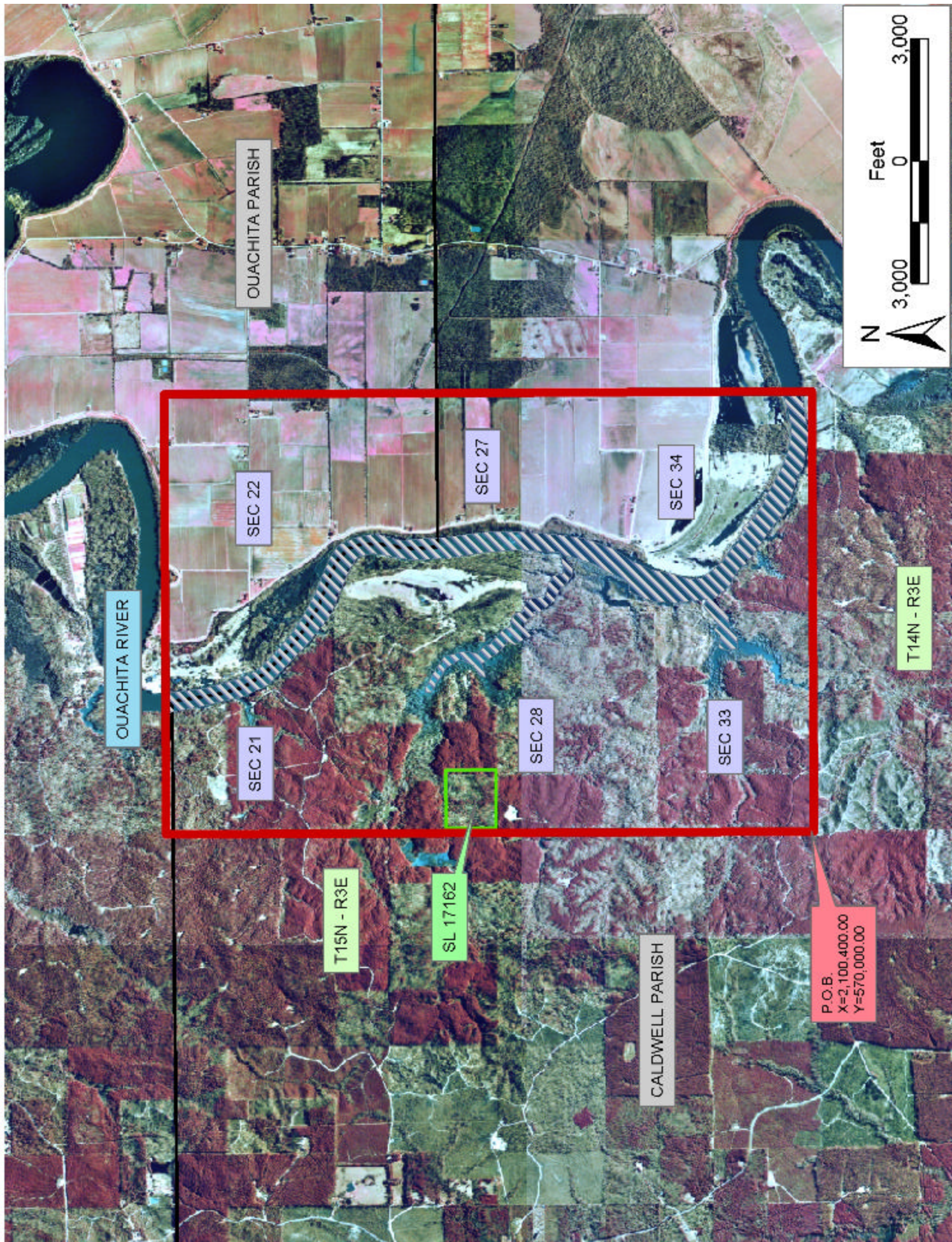
All of the lands now or formerly constituting the beds and bottoms of all water bodies of every nature and description the title of which vests in the State of Louisiana, together with all islands arising therein and other lands formed by accretion or by reliction, where allowed by law, excepting tax adjudicated lands, and not presently under mineral lease on August 13, 2003, situated in Caldwell and Ouachita Parishes, Louisiana, and more particularly described as follows: Beginning at a point having Coordinates of X = 2,100,400.00 and Y = 570,000.00; thence North 15,900.00 feet to a point having Coordinates of X = 2,100,400.00 and Y = 585,900.00; thence East 10,800.00 feet to a point having Coordinates of X = 2,111,200.00 and Y = 585,900.00; thence South 15,900.00 feet to a point having Coordinates of X = 2,111,200.00 and Y = 570,000.00; thence West 10,800.00 feet to the point of beginning, containing approximately **246 acres**, all as more particularly outlined on a plat on file in the Office of Mineral Resources, Department of Natural Resources. All bearings, distances and coordinates are based on Louisiana Coordinate System of 1927, (North or South Zone), where applicable.

NOTE: The above description of the Tract nominated for lease has been provided and corrected, where required, exclusively by the nomination party. Any mineral lease selected from this Tract and awarded by the Louisiana State Mineral Board shall be without warranty of any kind, either express, implied, or statutory, including, but not limited to, the implied warranties of merchantability and fitness for a particular purpose. Should the mineral lease awarded by the Louisiana State Mineral Board be subsequently modified, cancelled or abrogated due to the existence of conflicting leases, operating agreements, private claims or other future obligations or conditions which may affect all or any portion of the leased Tract, it shall not relieve the Lessee of the obligation to pay any bonus due thereon to the Louisiana State Mineral Board, nor shall the Louisiana State Mineral Board be obligated to refund any consideration paid by the Lessor prior to such modification, cancellation, or abrogation, including, but not limited to, bonuses, rentals and royalties.

Applicant: Hep Energy, Inc.

Bidder	Cash Payment	Price/ Acre	Rental	Oil	Gas	Other







**TRACT 35574 - St. James Parish, Louisiana**

All of the lands now or formerly constituting the beds and bottoms of all water bodies of every nature and description the title of which vests in the State of Louisiana, together with all islands arising therein and other lands formed by accretion or by reliction, where allowed by law, excepting tax adjudicated lands, and not presently under mineral lease on August 13, 2003, situated in St. James Parish, Louisiana, and more particularly described as follows: Beginning at a point having Coordinates of X = 2,161,994.24 and Y = 485,184.59; thence West 9,500.00 feet to a point having Coordinates of X = 2,152,494.24 and Y = 485,184.59; thence North 17,000.00 feet to a point having Coordinates of X = 2,152,494.24 and Y = 502,184.59; thence East 9,500.00 feet to a point having Coordinates of X = 2,161,994.24 and Y = 502,184.59; thence South 17,000.00 feet to the point of beginning, containing approximately **972 acres**, all as more particularly outlined on a plat on file in the Office of Mineral Resources, Department of Natural Resources. All bearings, distances and coordinates are based on Louisiana Coordinate System of 1927, (North or South Zone), where applicable.

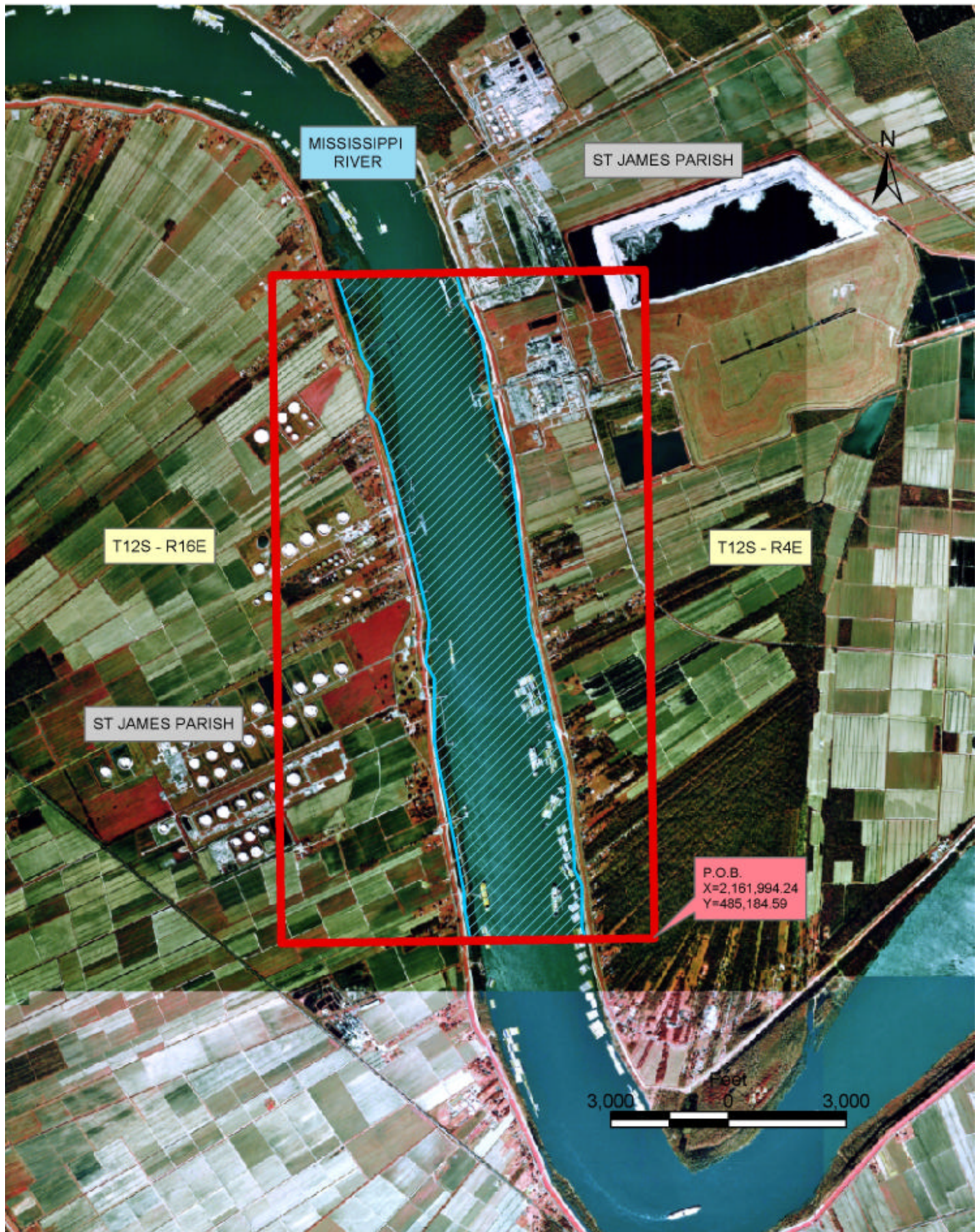
NOTE: The above description of the Tract nominated for lease has been provided and corrected, where required, exclusively by the nomination party. Any mineral lease selected from this Tract and awarded by the Louisiana State Mineral Board shall be without warranty of any kind, either express, implied, or statutory, including, but not limited to, the implied warranties of merchantability and fitness for a particular purpose. Should the mineral lease awarded by the Louisiana State Mineral Board be subsequently modified, cancelled or abrogated due to the existence of conflicting leases, operating agreements, private claims or other future obligations or conditions which may affect all or any portion of the leased Tract, it shall not relieve the Lessee of the obligation to pay any bonus due thereon to the Louisiana State Mineral Board, nor shall the Louisiana State Mineral Board be obligated to refund any consideration paid by the Lessor prior to such modification, cancellation, or abrogation, including, but not limited to, bonuses, rentals and royalties.

NOTE: The State of Louisiana does hereby reserve, and this lease shall be subject to, the imprescriptible right of surface use in the nature of a servitude in favor of the Department of Natural Resources, including its Offices and Commissions, for the sole purpose of implementing, constructing, servicing and maintaining approved coastal zone management and/or restoration projects. Utilization of any and all rights derived under this lease by the mineral lessee, its agents, successors or assigns, shall not interfere with nor hinder the reasonable surface use by the Department of Natural Resources, its Offices or Commissions, as herein above reserved.

Applicant: Saxon Energy, Inc.

Bidder	Cash Payment	Price/ Acre	Rental	Oil	Gas	Other







#### **TRACT 35575 - Plaquemines Parish, Louisiana**

All of the lands now or formerly constituting the beds and bottoms of all water bodies of every nature and description the title of which vests in the State of Louisiana, together with all islands arising therein and other lands formed by accretion or by reliction, where allowed by law, excepting tax adjudicated lands, and not presently under mineral lease on August 13, 2003, situated in Plaquemines Parish, Louisiana, and more particularly described as follows: Beginning at a point having Coordinates of X = 2,579,510.00 and Y = 303,200.00; thence West 12,310.00 feet to a point having Coordinates of X = 2,567,200.00 and Y = 303,200.00; thence North 9,630.00 feet to a point having Coordinates of X = 2,567,200.00 and Y = 312,830.00; thence Easterly approximately 4,754 feet to an interior corner of State Lease No. 195, as amended; thence Easterly approximately 4,484 feet along the boundary of said State Lease No. 195, to the Northwest corner of State Lease No. 17620; thence South 21 degrees 28 minutes 04 seconds West approximately 2,833 feet along the West line of said State Lease No. 17620 to its most Southerly Southwest corner having Coordinates of X = 2,575,400.00 and Y = 310,270.00; thence South 73 degrees 44 minutes 23 seconds East 2,250.00 feet along the Southern boundary of said State Lease No. 17620 to an interior corner having Coordinates of X = 2,577,560.00 and Y = 309,640.00; thence North 61 degrees 28 minutes 19 seconds East 2,219.48 feet along the Southern boundary of said State Lease No. 17620 to an interior corner having Coordinates of X = 2,579,510.00 and Y = 310,700.00; thence South 7,500.00 feet to the point of beginning, **LESS AND EXCEPT** that portion, if any, of said State Lease No. 195, as amended, that may lie within the above described tract, containing approximately **2,445 acres**, all as more particularly outlined on a plat on file in the Office of Mineral Resources, Department of Natural Resources. All bearings, distances and coordinates are based on Louisiana Coordinate System of 1927, (North or South Zone), where applicable.

NOTE: The above description of the Tract nominated for lease has been provided and corrected, where required, exclusively by the nomination party. Any mineral lease selected from this Tract and awarded by the Louisiana State Mineral Board shall be without warranty of any kind, either express, implied, or statutory, including, but not limited to, the implied warranties of merchantability and fitness for a particular purpose. Should the mineral lease awarded by the Louisiana State Mineral Board be subsequently modified, cancelled or abrogated due to the existence of conflicting leases, operating agreements, private claims or other future obligations or conditions which may affect all or any portion of the leased Tract, it shall not relieve the Lessee of the obligation to pay any bonus due thereon to the Louisiana State Mineral Board, nor shall the Louisiana State Mineral Board be obligated to refund any consideration paid by the Lessor prior to such modification, cancellation, or abrogation, including, but not limited to, bonuses, rentals and royalties.

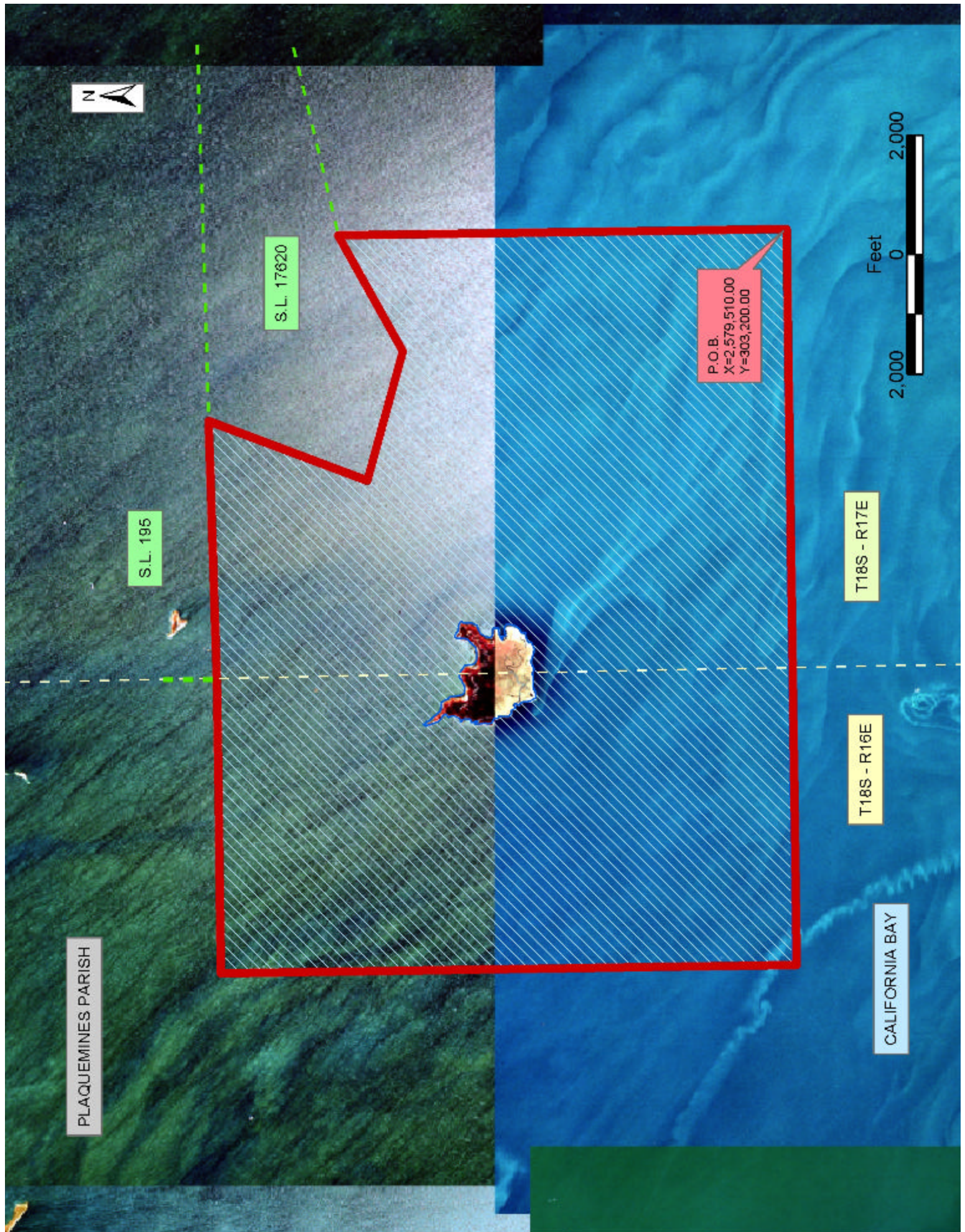
NOTE: The State of Louisiana does hereby reserve, and this lease shall be subject to, the imprescriptible right of surface use in the nature of a servitude in favor of the Department of Natural Resources, including its Offices and Commissions, for the sole purpose of implementing, constructing, servicing and maintaining approved coastal zone management and/or restoration projects. Utilization of any and all rights derived under this lease by the mineral lessee, its agents, successors or assigns, shall not interfere with nor hinder the reasonable surface use by the Department of Natural Resources, its Offices or Commissions, as herein above reserved.

NOTE: The Department of Wildlife and Fisheries has designated certain areas in the coastal waters of the State of Louisiana as Oyster Seed Bed Areas. The exact location of those Seed Bed Areas must be obtained from the Department of Wildlife and Fisheries and any work done under a mineral lease from the State of Louisiana may necessarily be conducted in conformity with the rules and regulations promulgated by the said Department of Wildlife and Fisheries for Oyster Seed Bed Areas.

Applicant: Gravitas Corporation

Bidder	Cash Payment	Price/ Acre	Rental	Oil	Gas	Other







**TRACT 35581 - Plaquemines Parish, Louisiana**

All of the lands now or formerly constituting the beds and bottoms of all water bodies of every nature and description the title of which vests in the State of Louisiana, together with all islands arising therein and other lands formed by accretion or by reliction, where allowed by law, excepting tax adjudicated lands, and not presently under mineral lease on August 13, 2003, situated in Plaquemines Parish, Louisiana, and more particularly described as follows: Beginning at the Northwest corner of State Lease No. 17721 having Coordinates of X = 2,483,116.12 and Y = 251,392.07; thence South 1,131.91 feet along the West line of said State Lease No. 17721 to a point having Coordinates of X = 2,483,116.12 and Y = 250,260.17; thence West 4,247.25 feet to a point having Coordinates of X = 2,478,868.87 and Y = 250,260.17; thence North 00 degrees 48 minutes 48 seconds West 10,210.39 feet to a point on the South line State Lease No. 2104; thence along the boundaries of said State Lease No. 2104 the following: South 89 degrees 15 minutes 00 seconds West 3,808.37 feet, North 00 degrees 45 minutes 00 seconds West 6,600.00 and North 89 degrees 15 minutes 00 seconds East 940.09 feet to a point on the North line of said State Lease No. 2104; thence North 1,208.42 feet to a point on the South line of State Lease No. 2028, as amended having Coordinates of X = 2,475,769.50 and Y = 268,239.84; thence along the boundaries of said State Lease No. 2028 the following: North 89 degrees 15 minutes 00 seconds East 4,344.11 feet, North 00 degrees 45 minutes 01 seconds West 3,891.68 feet and North 89 degrees 15 minutes 00 seconds East 4,058.06 feet to a point having Coordinates of X = 2,484,120.00 and Y = 272,241.17; thence South 4,391.17 feet to a point on the boundary of State Lease No. 212, as amended, having Coordinates of X = 2,484,120.00 and Y = 267,850.00; thence along the boundaries of said State Lease No. 212 the following: South 64 degrees 17 minutes 01 seconds East 2,014.29 feet to a point having Coordinates of X = 2,485,934.78 and Y = 266,975.97, South 2,256.44 feet to a point having Coordinates of X = 2,485,934.78 and Y = 264,719.53, being a point of intersection with that certain Agreement between Cockrell et al and the State of Louisiana, dated May 16, 1938, recorded at Book 88, Page 189; thence South 89 degrees 13 minutes 59 seconds West 319.73 feet along the North line of said Agreement to a point of intersection with the boundary of said State Lease No. 212 having Coordinates of X = 2,485,615.08 and Y = 264,715.25; thence along the boundaries of said State Lease No. 212 the following: North 77 degrees 35 minutes 59 seconds West 1,326.02 feet to a point having Coordinates of X = 2,484,320.00 and Y = 265,000.00, South 31 degrees 34 minutes 53 seconds West 2,864.19 feet to a point having Coordinates of X = 2,482,820.00 and Y = 262,560.00, South 31 degrees 34 minutes 53 seconds West 2,114.11 feet to a point having Coordinates of X = 2,481,712.82 and Y = 260,759.00, thence Southeasterly along the Southern boundary of said State Lease No. 212 to a point having a Coordinate of X = 2,484,219.24; thence Southerly approximately 8,065 feet to a point on the North boundary of said State Lease No. 17721 having Coordinates of X = 2,485,027.18 and Y = 251,392.08, thence West 1,911.06 feet along the North boundary of said State Lease No. 17721 to the point of beginning, **LESS AND EXCEPT**, if any, that certain Agreement between

Cockrell et al and the State of Louisiana, State Lease No. 2104 and State Lease No. 212, as amended, containing approximately **1,571.00 acres**, all as more particularly outlined on a plat on file in the Office of Mineral Resources, Department of Natural Resources. All bearings, distances and coordinates are based on Louisiana Coordinate System of 1927, (North or South Zone), where applicable.

NOTE: The above description of the Tract nominated for lease has been provided and corrected, where required, exclusively by the nomination party. Any mineral lease selected from this Tract and awarded by the Louisiana State Mineral Board shall be without warranty of any kind, either express, implied, or statutory, including, but not limited to, the implied warranties of merchantability and fitness for a particular purpose. Should the mineral lease awarded by the Louisiana State Mineral Board be subsequently modified, cancelled or abrogated due to the existence of conflicting leases, operating agreements, private claims or other future obligations or conditions which may affect all or any portion of the leased Tract, it shall not relieve the Lessee of the obligation to pay any bonus due thereon to the Louisiana State Mineral Board, nor shall the Louisiana State Mineral Board be obligated to refund any consideration paid by the Lessor prior to such modification, cancellation, or abrogation, including, but not limited to, bonuses, rentals and royalties.

NOTE: The State of Louisiana does hereby reserve, and this lease shall be subject to, the imprescriptible right of surface use in the nature of a servitude in favor of the Department of Natural Resources, including its Offices and Commissions, for the sole purpose of implementing, constructing, servicing and maintaining approved coastal zone management and/or restoration projects. Utilization of any and all rights derived under this lease by the mineral lessee, its agents, successors or assigns, shall not interfere with nor hinder the reasonable surface use by the Department of Natural Resources, its Offices or Commissions, as herein above reserved.

NOTE: The Department of Wildlife and Fisheries has designated certain areas in the coastal waters of the State of Louisiana as Oyster Seed Bed Areas. The exact location of those Seed Bed Areas must be obtained from the Department of Wildlife and Fisheries and any work done under a mineral lease from the State of Louisiana may necessarily be conducted in conformity with the rules and regulations promulgated by the said Department of Wildlife and Fisheries for Oyster Seed Bed Areas.

Applicant: Mark A. O'Neal & Associates, Inc.

Bidder	Cash Payment	Price/ Acre	Rental	Oil	Gas	Other



