

INLAND TRACTS

TRACT 34725 - Cameron Parish, Louisiana

All of the lands now or formerly constituting the beds and bottoms of all water bodies of every nature and description, and all islands and other lands formed by accretion, where allowed by law, or by reliction, and excepting tax adjudicated lands, belonging to the State of Louisiana and not presently under mineral lease on August 14, 2002, situated in Cameron Parish, Louisiana, and more particularly described as follows: Beginning at a point having Coordinates of X = 1,224,000.00 and Y = 478,000.00; thence West 3,140.00 feet to a point on the East line of State Lease No. 17420 having Coordinates of X = 1,220,860.00 and Y = 478,000.00; thence North 1,170.00 feet along the East line of said State Lease No. 17420 to its Northeast corner having Coordinates of X = 1,220,860.00 and Y = 479,170.00; thence West 4,016.43 feet along the North line of said State Lease No. 17420 to its Northwest corner, said corner also being a point on the Texas - Louisiana Boundary, having Coordinates of X = 1,216,843.57 and Y = 479,170.00; thence North 08 degrees 18 minutes 12 seconds East 2,433.51 feet along said Texas - Louisiana Boundary to a point having Coordinates of X = 1,217,195.00 and Y = 481,578.00; thence North 20 degrees 16 minutes 30 seconds East 2,885.80 feet along said Texas - Louisiana Boundary to a point having Coordinates of X = 1,218,195.00 and Y = 484,285.00; thence North 65 degrees 08 minutes 26 seconds East 70.00 feet along said Texas - Louisiana Boundary to a point on the boundary of State Lease No. 7555, as amended, having Coordinates of X = 1,218,258.51 and Y = 484,314.43; thence South 17 degrees 49 minutes 29 seconds East 414.32 feet along the boundary of said State Lease No. 7555, as amended, to the Northwest corner of State Lease No. 3459, as amended, having Coordinates of X = 1,218,385.34 and Y = 483,920.00; thence along the boundary of said State Lease No. 3459, as amended, the following courses: South 17 degrees 49 minutes 29 seconds East 178.57 feet to a point having Coordinates of X = 1,218,440.00 and Y = 483,750.00; South 13 degrees 12 minutes 29 seconds East 503.31 feet to a point having Coordinates of X = 1,218,555.00 and Y = 483,260.00; South 07 degrees 50 minutes 21 seconds East 696.51 feet to a point having Coordinates of X = 1,218,650.00 and Y = 482,570.00; South 03 degrees 45 minutes 06 seconds East 611.31 feet to a point having Coordinates of X = 1,218,690.00 and Y = 481,960.00; South 580.00 feet to a point having Coordinates of X = 1,218,690.00 and Y = 481,380.00; South 10 degrees 55 minutes 22 seconds West 580.52 feet to a point having Coordinates of X = 1,218,580.00 and Y = 480,810.00; South 59 degrees 20 minutes 58 seconds East 313.85 feet to a point having Coordinates of X = 1,218,850.00 and Y = 480,650.00; South 69 degrees 16 minutes 28 seconds East 395.60 feet to a point having Coordinates of X = 1,219,220.00 and Y = 480,510.00; South 78 degrees 06 minutes 41 seconds East 388.33 feet to a point having Coordinates of X = 1,219,600.00 and Y = 480,430.00 and South 88 degrees 34 minutes 05 seconds East 400.12 feet to its Southeast corner, said corner also being the most Southerly Southwest corner of said State Lease No. 7555, as amended, having Coordinates of X = 1,220,000.00 and Y = 480,420.00; thence along the Southern boundary of said State Lease No. 7555, as amended, the following courses: North 80 degrees 54 minutes 35 seconds East 506.36 feet to a point having Coordinates of X = 1,220,500.00 and Y = 480,500.00; East 310.00 feet to a

point having Coordinates of X = 1,220,810.00 and Y = 480,500.00; South 79 degrees 59 minutes 31 seconds East 345.25 feet to a point having Coordinates of X = 1,221,150.00 and Y = 480,440.00; South 64 degrees 10 minutes 44 seconds East 344.38 feet to a point having Coordinates of X = 1,221,460.00 and Y = 480,290.00; South 66 degrees 56 minutes 55 seconds East 510.78 feet to a point having Coordinates of X = 1,221,930.00 and Y = 480,090.00; South 75 degrees 37 minutes 07 seconds East 402.62 feet to a point having Coordinates of X = 1,222,320.00 and Y = 479,990.00; South 84 degrees 17 minutes 22 seconds East 402.00 feet to a point having Coordinates of X = 1,222,720.00 and Y = 479,950.00; North 84 degrees 17 minutes 22 seconds East 402.00 feet to a point having Coordinates of X = 1,223,120.00 and Y = 479,990.00; North 80 degrees 04 minutes 26 seconds East 406.08 feet to a point having Coordinates of X = 1,223,520.00 and Y = 480,060.00; North 67 degrees 33 minutes 26 seconds East 497.69 feet to a point having Coordinates of X = 1,223,980.00 and Y = 480,250.00 and North 56 degrees 18 minutes 36 seconds East 24.04 feet to a point having Coordinates of X = 1,224,000.00 and Y = 480,263.33; thence South 2,263.33 feet to the point of beginning, containing approximately **365.41 acres**, all as more particularly outlined in a plat on file in the Office of Mineral Resources, Department of Natural Resources, **LESS AND EXCEPT** that portion thereof, if any, located West of the boundary line between the State of Texas and Louisiana as determined by the report of the Special Master and adjudicated by the Supreme Court of the United State in litigation styled **Texas v. Louisiana, et al No. 36 Original**, or as otherwise approved by said court, as provided by the applicant. All bearings, distances and coordinates are based on Louisiana Coordinate System of 1927, (North or South Zone) where applicable.

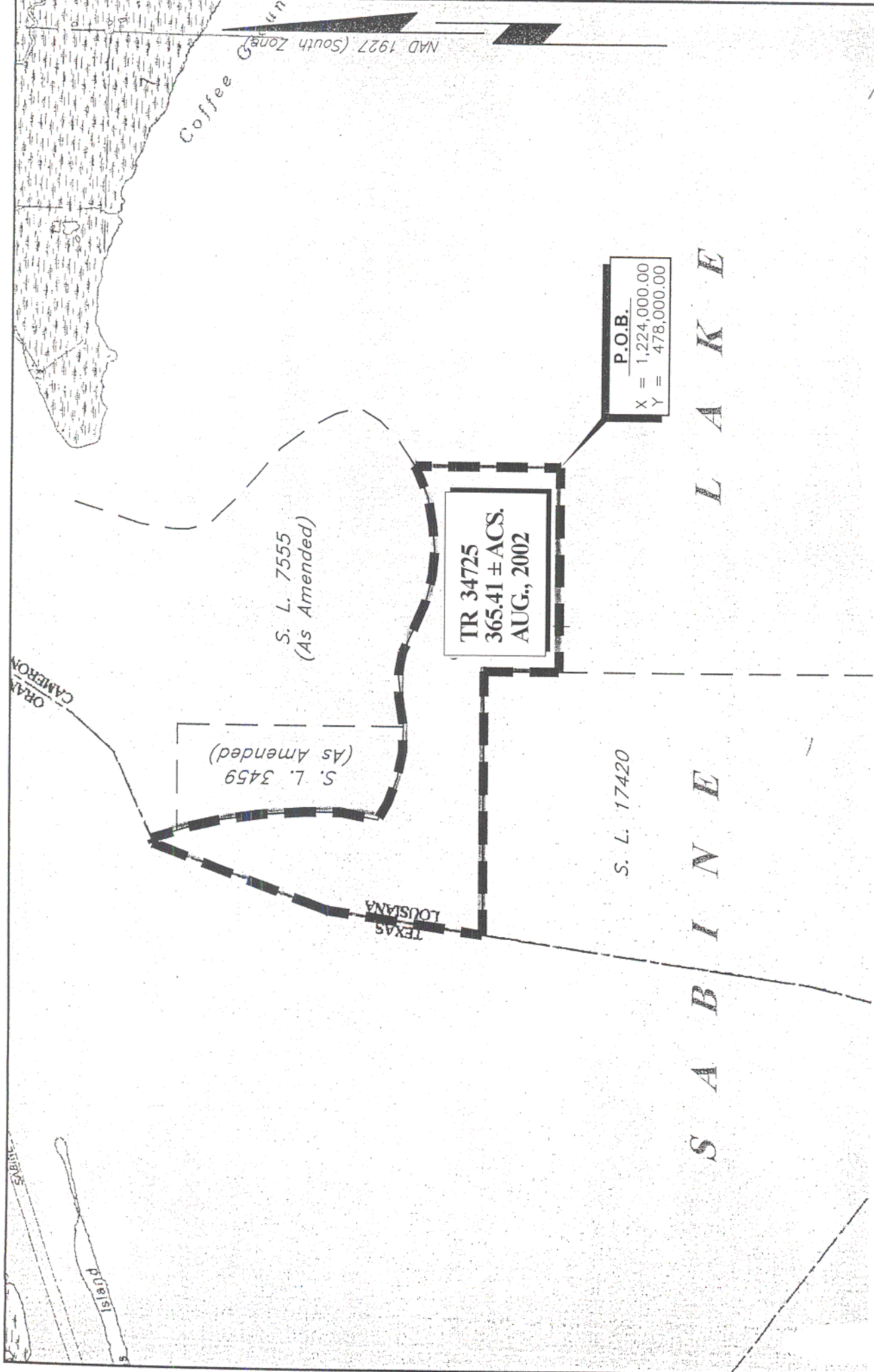
NOTE: The above description of the Tract nominated for lease has been provided and corrected, where required, exclusively by the nomination party. Any mineral lease selected from this Tract and awarded by the Louisiana State Mineral Board shall be without warranty of any kind, either express, implied, or statutory, including, but not limited to, the implied warranties of merchantability and fitness for a particular purpose. Should the mineral lease awarded by the Louisiana State Mineral Board be subsequently modified, cancelled or abrogated due to the existence of conflicting leases, operating agreements, private claims or other future obligations or conditions which may affect all or any portion of the leased Tract, it shall not relieve the Lessee of the obligation to pay any bonus due thereon to the Louisiana State Mineral Board, not shall the Louisiana State Mineral Board be obligated to refund any consideration paid by the Lessor prior to such modification, cancellation, or abrogation, including, but not limited to, bonuses, rentals and royalties.

NOTE: The State of Louisiana does hereby reserve, and this lease shall be subject to, the imprescriptible right of surface use in the nature of a servitude in favor of the Department of Natural Resources and/or the Department of Wildlife and Fisheries, including its Offices and Commissions, for the sole purpose of implementing, constructing, servicing and maintaining approved coastal zone management and/or restoration

projects. Utilization of any and all rights derived under this lease by the mineral lessee, its agents, successors or assigns, shall not interfere with nor hinder the reasonable surface use by the Department of Natural Resources and/or the Department of Wildlife and Fisheries, its Offices or Commissions, as herein above reserved.

Applicant: Merlin Exploration, Inc.

Bidder	Cash Payment	Price / Acre	Rental	Oil	Gas	Other



TRACT 34726 - Jefferson Davis Parish, Louisiana

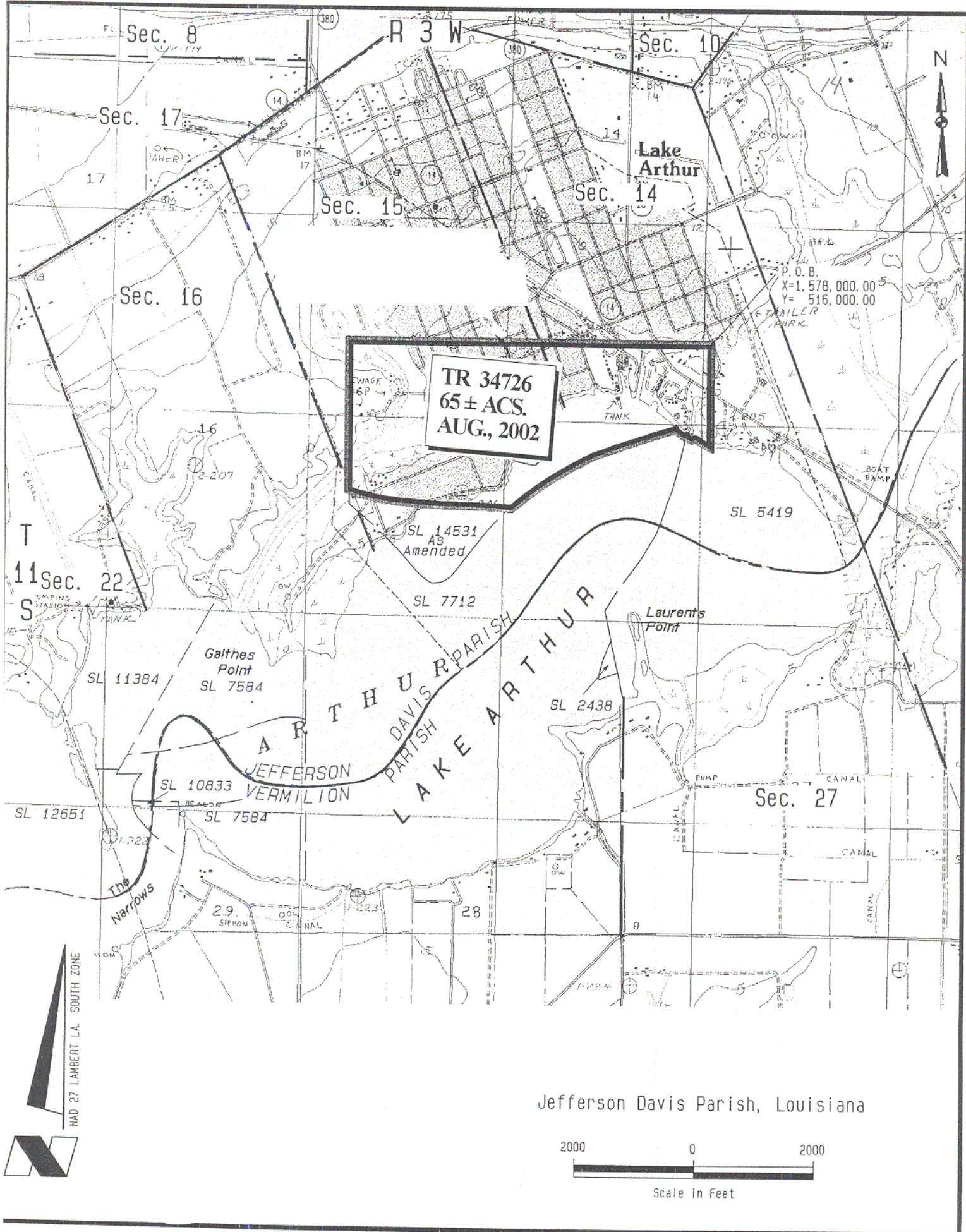
All of the lands now or formerly constituting the beds and bottoms of all water bodies of every nature and description, and all islands and other lands formed by accretion, where allowed by law, or by reliction, and excepting tax adjudicated lands, belonging to the State of Louisiana and not presently under mineral lease on August 14, 2002, situated in Jefferson Davis Parish, Louisiana, and more particularly described as follows: Beginning at a point having Coordinates of X = 1,578,000.00 and Y = 516,000.00; thence South approximately 1,700 feet to a point on the Northern boundary of State Lease No. 5419, as amended, having a Coordinate of X = 1,578,000.00; thence on the Northern boundaries of said State Lease No. 5419, State Lease No. 7712, as amended, and State Lease No. 14531, as amended, the following courses: Northwesterly, Southwesterly and Northwesterly to a point on the Northern boundary of said State Lease No. 14531 having Coordinates of X = 1,572,000.00 and Y = 513,568.10; thence North 2,431.90 feet to a point having Coordinates of X = 1,572,000.00 and Y = 516,000.00; thence East 6,000.00 feet to the point of beginning, containing approximately **65 acres**, all as more particularly outlined in a plat on file in the Office of Mineral Resources, Department of Natural Resources, as provided by the applicant. All bearings, distances and coordinates are based on Louisiana Coordinate System of 1927, (North or South Zone) where applicable.

NOTE: The above description of the Tract nominated for lease has been provided and corrected, where required, exclusively by the nomination party. Any mineral lease selected from this Tract and awarded by the Louisiana State Mineral Board shall be without warranty of any kind, either express, implied, or statutory, including, but not limited to, the implied warranties of merchantability and fitness for a particular purpose. Should the mineral lease awarded by the Louisiana State Mineral Board be subsequently modified, cancelled or abrogated due to the existence of conflicting leases, operating agreements, private claims or other future obligations or conditions which may affect all or any portion of the leased Tract, it shall not relieve the Lessee of the obligation to pay any bonus due thereon to the Louisiana State Mineral Board, nor shall the Louisiana State Mineral Board be obligated to refund any consideration paid by the Lessor prior to such modification, cancellation, or abrogation, including, but not limited to, bonuses, rentals and royalties.

NOTE: The State of Louisiana does hereby reserve, and this lease shall be subject to, the imprescriptible right of surface use in the nature of a servitude in favor of the Department of Natural Resources and/or the Department of Wildlife and Fisheries, including its Offices and Commissions, for the sole purpose of implementing, constructing, servicing and maintaining approved coastal zone management and/or restoration projects. Utilization of any and all rights derived under this lease by the mineral lessee, its agents, successors or assigns, shall not interfere with nor hinder the reasonable surface use by the Department of Natural Resources and/or the Department of Wildlife and Fisheries, its Offices or Commissions, as herein above reserved.

Applicant: Roblyn Petroleum Corporation

Bidder	Cash Payment	Price / Acre	Rental	Oil	Gas	Other



TRACT 34727 - Jefferson and Lafourche Parishes, Louisiana

All of the lands now or formerly constituting the beds and bottoms of all water bodies of every nature and description, and all islands and other lands formed by accretion, where allowed by law, or by reliction, and excepting tax adjudicated lands, belonging to the State of Louisiana and not presently under mineral lease on August 14, 2002, situated in Jefferson and Lafourche Parishes, Louisiana, and more particularly described as follows: Beginning at the most Southerly Southeast corner of State Lease No. 17176 having Coordinates of X = 2,381,700.00 and Y = 365,400.00; thence South 9,700.00 feet to a point having Coordinates of X = 2,381,700.00 and Y = 355,700.00; thence West 11,150.00 feet to a point having Coordinates of X = 2,370,550.00 and Y = 355,700.00; thence North 12,300.00 feet to a point having Coordinates of X = 2,370,550.00 and Y = 368,000.00; thence East 5,950.00 feet to a point on the West boundary of said State Lease No. 17176 having Coordinates of X = 2,376,500.00 and Y = 368,000.00; thence South 2,600.00 feet along the said West boundary of State Lease No. 17176 to its Southwest corner having Coordinates of X = 2,376,500.00 and Y = 365,400.00; thence East 5,200.00 feet along the South boundary of said State Lease No. 17176 to the point of beginning, containing approximately **2,142 acres**, all as more particularly outlined in a plat on file in the Office of Mineral Resources, Department of Natural Resources, as provided by the applicant. All bearings, distances and coordinates are based on Louisiana Coordinate System of 1927, (North or South Zone) where applicable.

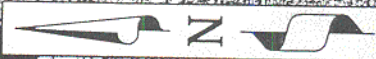
NOTE: The above description of the Tract nominated for lease has been provided and corrected, where required, exclusively by the nomination party. Any mineral lease selected from this Tract and awarded by the Louisiana State Mineral Board shall be without warranty of any kind, either express, implied, or statutory, including, but not limited to, the implied warranties of merchantability and fitness for a particular purpose. Should the mineral lease awarded by the Louisiana State Mineral Board be subsequently modified, cancelled or abrogated due to the existence of conflicting leases, operating agreements, private claims or other future obligations or conditions which may affect all or any portion of the leased Tract, it shall not relieve the Lessee of the obligation to pay any bonus due thereon to the Louisiana State Mineral Board, nor shall the Louisiana State Mineral Board be obligated to refund any consideration paid by the Lessor prior to such modification, cancellation, or abrogation, including, but not limited to, bonuses, rentals and royalties.

NOTE: The State of Louisiana does hereby reserve, and this lease shall be subject to, the imprescriptible right of surface use in the nature of a servitude in favor of the Department of Natural Resources and/or the Department of Wildlife and Fisheries, including its Offices and Commissions, for the sole purpose of implementing, constructing, servicing and maintaining approved coastal zone management and/or restoration projects. Utilization of any and all rights derived under this lease by the mineral lessee, its agents, successors or assigns, shall not interfere with nor hinder the reasonable surface use by the Department of Natural

Resources and/or the Department of Wildlife and Fisheries, its Offices or Commissions, as herein above reserved.

Applicant: Martha D. Winder

Bidder	Cash Payment	Price / Acre	Rental	Oil	Gas	Other



P.O.B.
X= 2,381,700.00
Y= 365,400.00

TR 34727
2,142 ± ACS.
AUG., 2002



BAYOU RIGOLETTES

BAYOU PEROT

LAFORCHE PARISH AND
JEFFERSON PARISH

R22E
R23E

LAFORCHE
JEFFERSON
PARISH

29
32
32

16975

31

32

5

34

35

1165
1175

TRACT 34728 - Jefferson and Lafourche Parishes, Louisiana

All of the lands now or formerly constituting the beds and bottoms of all water bodies of every nature and description, and all islands and other lands formed by accretion, where allowed by law, or by reliction, and excepting tax adjudicated lands, belonging to the State of Louisiana and not presently under mineral lease on August 14, 2002, situated in Jefferson and Lafourche Parishes, Louisiana, and more particularly described as follows: Beginning at a point having Coordinates of X = 2,379,020.00 and Y = 355,700.00; thence South 14,500.00 feet to a point having Coordinates of X = 2,379,020.00 and Y = 341,200.00; thence West 2,520.00 feet to a point on the East boundary of State Lease No. 16879 having Coordinates of X = 2,376,500.00 and Y = 341,200.00; thence North 2,053.11 feet along the said East boundary of said State Lease No. 16879 to its Northeast corner having Coordinates of X = 2,376,500.00 and Y = 343,253.11; thence West 5,950.00 feet along the North boundary of said State Lease No. 16879 to a point having Coordinates of X = 2,370,550.00 and Y = 343,253.11; thence North 12,446.89 feet to a point having Coordinates of X = 2,370,550.00 and Y = 355,700.00; thence East 8,470.00 feet to the point of beginning, containing approximately **1,852 acres**, all as more particularly outlined in a plat on file in the Office of Mineral Resources, Department of Natural Resources, as provided by the applicant. All bearings, distances and coordinates are based on Louisiana Coordinate System of 1927, (North or South Zone) where applicable.

NOTE: The above description of the Tract nominated for lease has been provided and corrected, where required, exclusively by the nomination party. Any mineral lease selected from this Tract and awarded by the Louisiana State Mineral Board shall be without warranty of any kind, either express, implied, or statutory, including, but not limited to, the implied warranties of merchantability and fitness for a particular purpose. Should the mineral lease awarded by the Louisiana State Mineral Board be subsequently modified, cancelled or abrogated due to the existence of conflicting leases, operating agreements, private claims or other future obligations or conditions which may affect all or any portion of the leased Tract, it shall not relieve the Lessee of the obligation to pay any bonus due thereon to the Louisiana State Mineral Board, nor shall the Louisiana State Mineral Board be obligated to refund any consideration paid by the Lessor prior to such modification, cancellation, or abrogation, including, but not limited to, bonuses, rentals and royalties.

NOTE: The State of Louisiana does hereby reserve, and this lease shall be subject to, the imprescriptible right of surface use in the nature of a servitude in favor of the Department of Natural Resources and/or the Department of Wildlife and Fisheries, including its Offices and Commissions, for the sole purpose of implementing, constructing, servicing and maintaining approved coastal zone management and/or restoration projects. Utilization of any and all rights derived under this lease by the mineral lessee, its agents, successors or assigns, shall not interfere with nor hinder the reasonable surface use by the Department of Natural

Resources and/or the Department of Wildlife and Fisheries, its Offices or Commissions, as herein above reserved.

Applicant: Martha D. Winder

Bidder	Cash Payment	Price / Acre	Rental	Oil	Gas	Other



P.O.B.
X= 2,379,020.00'
Y= 355,700.00'

TR 34728
1,852 ± ACS.
AUG., 2002

R 23 E

BAYOU RIGOLETTE

BAYOU PEROT

LAFOURCHE PARISH
JEFFERSON PARISH

LAFOURCHE PARISH AND
JEFFERSON PARISH

TRACT 34729 - Jefferson Parish, Louisiana

All of the lands now or formerly constituting the beds and bottoms of all water bodies of every nature and description, and all islands and other lands formed by accretion, where allowed by law, or by reliction, and excepting tax adjudicated lands, belonging to the State of Louisiana and not presently under mineral lease on August 14, 2002, situated in Jefferson Parish, Louisiana, and more particularly described as follows: Beginning at the most Southerly Southeast corner of State Lease No. 17176 having Coordinates of X = 2,381,700.00 and Y = 365,400.00; thence North 1,770.00 feet along an Eastern boundary of said State Lease No. 17176 to a corner having Coordinates of X = 2,381,700.00 and Y = 367,170.00; thence East 6,100.00 feet along the South boundary of said State Lease No. 17176 to its most Northerly Southeast corner having Coordinates of X = 2,387,800.00 and Y = 367,170.00; thence East 4,460.00 feet to a point having Coordinates of X = 2,392,260.00 and Y = 367,170.00; thence South 11,470.00 feet to a point having Coordinates of X = 2,392,260.00 and Y = 355,700.00; thence West 10,560.00 feet to a point having Coordinates of X = 2,381,700.00 and Y = 355,700.00; thence North 9,700.00 feet to the point of beginning, containing approximately **1,473 acres**, all as more particularly outlined in a plat on file in the Office of Mineral Resources, Department of Natural Resources, as provided by the applicant. All bearings, distances and coordinates are based on Louisiana Coordinate System of 1927, (North or South Zone) where applicable.

NOTE: The above description of the Tract nominated for lease has been provided and corrected, where required, exclusively by the nomination party. Any mineral lease selected from this Tract and awarded by the Louisiana State Mineral Board shall be without warranty of any kind, either express, implied, or statutory, including, but not limited to, the implied warranties of merchantability and fitness for a particular purpose. Should the mineral lease awarded by the Louisiana State Mineral Board be subsequently modified, cancelled or abrogated due to the existence of conflicting leases, operating agreements, private claims or other future obligations or conditions which may affect all or any portion of the leased Tract, it shall not relieve the Lessee of the obligation to pay any bonus due thereon to the Louisiana State Mineral Board, nor shall the Louisiana State Mineral Board be obligated to refund any consideration paid by the Lessor prior to such modification, cancellation, or abrogation, including, but not limited to, bonuses, rentals and royalties.

NOTE: The State of Louisiana does hereby reserve, and this lease shall be subject to, the imprescriptible right of surface use in the nature of a servitude in favor of the Department of Natural Resources and/or the Department of Wildlife and Fisheries, including its Offices and Commissions, for the sole purpose of implementing, constructing, servicing and maintaining approved coastal zone management and/or restoration projects. Utilization of any and all rights derived under this lease by the mineral lessee, its agents, successors or assigns, shall not interfere with nor hinder the reasonable surface use by the Department of Natural

Resources and/or the Department of Wildlife and Fisheries, its Offices or Commissions, as herein above reserved.

Applicant: Martha D. Winder

Bidder	Cash Payment	Price / Acre	Rental	Oil	Gas	Other



S. L. 15057

THE PEN

R24E
R23E



T16S - R23E

TR 34729
1,473 ± ACS.
AUG., 2002

BAYOU RIGOLETTES

P.O.B.
X= 2,381,700.00
Y= 365,400.00'

R 23 E

BAYOU PEROT

JEFFERSON PARISH

TRACT 34730 - Jefferson Parish, Louisiana

All of the lands now or formerly constituting the beds and bottoms of all water bodies of every nature and description, and all islands and other lands formed by accretion, where allowed by law, or by reliction, and excepting tax adjudicated lands, belonging to the State of Louisiana and not presently under mineral lease on August 14, 2002, situated in Jefferson Parish, Louisiana, and more particularly described as follows: Beginning at a point having Coordinates of X = 2,379,020.00 and Y = 355,700.00; thence East 13,240.00 feet to a point having Coordinates of X = 2,392,260.00 and Y = 355,700.00; thence South 14,500.00 feet to a point having Coordinates of X = 2,392,260.00 and Y = 341,200.00; thence West 13,240.00 feet to a point having Coordinates of X = 2,379,020.00 and Y = 341,200.00; thence North 14,500.00 feet to the point of beginning, containing approximately **2,486 acres**, all as more particularly outlined in a plat on file in the Office of Mineral Resources, Department of Natural Resources, as provided by the applicant. All bearings, distances and coordinates are based on Louisiana Coordinate System of 1927, (North or South Zone) where applicable.

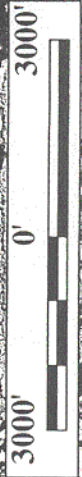
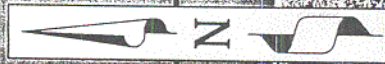
NOTE: The above description of the Tract nominated for lease has been provided and corrected, where required, exclusively by the nomination party. Any mineral lease selected from this Tract and awarded by the Louisiana State Mineral Board shall be without warranty of any kind, either express, implied, or statutory, including, but not limited to, the implied warranties of merchantability and fitness for a particular purpose. Should the mineral lease awarded by the Louisiana State Mineral Board be subsequently modified, cancelled or abrogated due to the existence of conflicting leases, operating agreements, private claims or other future obligations or conditions which may affect all or any portion of the leased Tract, it shall not relieve the Lessee of the obligation to pay any bonus due thereon to the Louisiana State Mineral Board, nor shall the Louisiana State Mineral Board be obligated to refund any consideration paid by the Lessor prior to such modification, cancellation, or abrogation, including, but not limited to, bonuses, rentals and royalties.

NOTE: The State of Louisiana does hereby reserve, and this lease shall be subject to, the imprescriptible right of surface use in the nature of a servitude in favor of the Department of Natural Resources and/or the Department of Wildlife and Fisheries, including its Offices and Commissions, for the sole purpose of implementing, constructing, servicing and maintaining approved coastal zone management and/or restoration projects. Utilization of any and all rights derived under this lease by the mineral lessee, its agents, successors or assigns, shall not interfere with nor hinder the reasonable surface use by the Department of Natural Resources and/or the Department of Wildlife and Fisheries, its Offices or Commissions, as herein above reserved.

Applicant: Martha D. Winder

Bidder	Cash Payment	Price / Acre	Rental	Oil	Gas	Other

THE PEN



P.O.B.
X= 2,379,020.00'
Y= 355,700.00'

T 17 S - R 23 E

TR 34730
2,486 ± ACS.
AUG., 2002

JEFFERSON PARISH



TRACT 34731 - Jefferson Parish, Louisiana

All of the lands now or formerly constituting the beds and bottoms of all water bodies of every nature and description, and all islands and other lands formed by accretion, where allowed by law, or by reliction, and excepting tax adjudicated lands, belonging to the State of Louisiana and not presently under mineral lease on August 14, 2002, situated in Jefferson Parish, Louisiana, and more particularly described as follows: Beginning at a point having Coordinates of X = 2,392,260.00 and Y = 359,300.00; thence North 7,870.00 feet to a point having Coordinates of X = 2,392,260.00 and Y = 367,170.00; thence West 4,460.00 feet to the most Northerly Southeast corner of State Lease No. 17176 having Coordinates of X = 2,387,800.00 and Y = 367,170.00; thence North 2,330.00 feet along the East boundary of State Lease No. 17176 to a point having Coordinates of X = 2,387,800.00 and Y = 369,500.00; thence East 16,500.00 feet to a point having Coordinates of X = 2,404,300.00 and Y = 369,500.00; thence South 10,200.00 feet to a point having Coordinates of X = 2,404,300.00 and Y = 359,300.00; thence West 12,040.00 feet to the point of beginning, containing approximately **28 acres**, all as more particularly outlined in a plat on file in the Office of Mineral Resources, Department of Natural Resources, as provided by the applicant. All bearings, distances and coordinates are based on Louisiana Coordinate System of 1927, (North or South Zone) where applicable.

NOTE: The above description of the Tract nominated for lease has been provided and corrected, where required, exclusively by the nomination party. Any mineral lease selected from this Tract and awarded by the Louisiana State Mineral Board shall be without warranty of any kind, either express, implied, or statutory, including, but not limited to, the implied warranties of merchantability and fitness for a particular purpose. Should the mineral lease awarded by the Louisiana State Mineral Board be subsequently modified, cancelled or abrogated due to the existence of conflicting leases, operating agreements, private claims or other future obligations or conditions which may affect all or any portion of the leased Tract, it shall not relieve the Lessee of the obligation to pay any bonus due thereon to the Louisiana State Mineral Board, nor shall the Louisiana State Mineral Board be obligated to refund any consideration paid by the Lessor prior to such modification, cancellation, or abrogation, including, but not limited to, bonuses, rentals and royalties.

NOTE: The State of Louisiana does hereby reserve, and this lease shall be subject to, the imprescriptible right of surface use in the nature of a servitude in favor of the Department of Natural Resources and/or the Department of Wildlife and Fisheries, including its Offices and Commissions, for the sole purpose of implementing, constructing, servicing and maintaining approved coastal zone management and/or restoration projects. Utilization of any and all rights derived under this lease by the mineral lessee, its agents, successors or assigns, shall not interfere with nor hinder the reasonable surface use by the Department of Natural Resources and/or the Department of Wildlife and Fisheries, its Offices or Commissions, as herein above reserved.

Applicant: Martha D. Winder

Bidder	Cash Payment	Price / Acre	Rental	Oil	Gas	Other



TR 34731
28 ± ACS.
AUG., 2002

THE PEN

R24E
R23E

T16S - R23 E

P.O.B.
X= 2,392,260.00'
Y= 359,300.00'

JEFFERSON PARISH

BAYOU RIGOLETT

BARATARIA

S. L. 15057

24

25

36

23

26

6

35

34

S. L. 1714

TRACT 34732 - Jefferson Parish, Louisiana

All of the lands now or formerly constituting the beds and bottoms of all water bodies of every nature and description, and all islands and other lands formed by accretion, where allowed by law, or by reliction, and excepting tax adjudicated lands, belonging to the State of Louisiana and not presently under mineral lease on August 14, 2002, situated in Jefferson Parish, Louisiana, and more particularly described as follows: Beginning at a point having Coordinates of X = 2,392,260.00 and Y = 359,300.00; thence East 12,040.00 feet to a point having Coordinates of X = 2,404,300.00 and Y = 359,300.00; thence South 13,362.49 feet to point having Coordinates of X = 2,404,300.00 and Y = 345,937.51; thence West 12,040.00 feet to a point having Coordinates of X = 2,392,260.00 and Y = 345,937.51; thence North 13,362.49 feet to the point of beginning, containing approximately **187 acres**, all as more particularly outlined in a plat on file in the Office of Mineral Resources, Department of Natural Resources, as provided by the applicant. All bearings, distances and coordinates are based on Louisiana Coordinate System of 1927, (North or South Zone) where applicable.

NOTE: The above description of the Tract nominated for lease has been provided and corrected, where required, exclusively by the nomination party. Any mineral lease selected from this Tract and awarded by the Louisiana State Mineral Board shall be without warranty of any kind, either express, implied, or statutory, including, but not limited to, the implied warranties of merchantability and fitness for a particular purpose. Should the mineral lease awarded by the Louisiana State Mineral Board be subsequently modified, cancelled or abrogated due to the existence of conflicting leases, operating agreements, private claims or other future obligations or conditions which may affect all or any portion of the leased Tract, it shall not relieve the Lessee of the obligation to pay any bonus due thereon to the Louisiana State Mineral Board, nor shall the Louisiana State Mineral Board be obligated to refund any consideration paid by the Lessor prior to such modification, cancellation, or abrogation, including, but not limited to, bonuses, rentals and royalties.

NOTE: The State of Louisiana does hereby reserve, and this lease shall be subject to, the imprescriptible right of surface use in the nature of a servitude in favor of the Department of Natural Resources and/or the Department of Wildlife and Fisheries, including its Offices and Commissions, for the sole purpose of implementing, constructing, servicing and maintaining approved coastal zone management and/or restoration projects. Utilization of any and all rights derived under this lease by the mineral lessee, its agents, successors or assigns, shall not interfere with nor hinder the reasonable surface use by the Department of Natural Resources and/or the Department of Wildlife and Fisheries, its Offices or Commissions, as herein above reserved.

Applicant: Martha D. Winder

Bidder	Cash Payment	Price / Acre	Rental	Oil	Gas	Other



THE PEN

R24E
R23E

T16S - R23E

TR 34732
187 ± ACS.
AUG., 2002

BARATARIA

P.O.B.
X= 2,392,260.00'
Y= 359,300.00'

BAYOU RIGOLETTES

JEFFERSON PARISH

TRACT 34733 - Plaquemines Parish, Louisiana

All of the lands now or formerly constituting the beds and bottoms of all water bodies of every nature and description, and all islands and other lands formed by accretion, where allowed by law, or by reliction, and excepting tax adjudicated lands, belonging to the State of Louisiana and not presently under mineral lease on August 14, 2002, situated in Plaquemines Parish, Louisiana, and more particularly described as follows: Beginning a point having Coordinates of X = 2,549,900.00 and Y = 245,050.00; thence East 10,800.00 feet to a point having Coordinates of X = 2,560,700.00 and Y = 245,050.00; thence South 404.32 feet to a point on the North line of State Lease No. 2651 having Coordinates of X = 2,560,700.00 and Y = 244,645.68; thence South 89 degrees 09 minutes 00 seconds West along said North line of State Lease 2651 10,801.19 feet to a point having Coordinates of X = 2,549,900.00 and Y = 244,485.45; thence North 564.55 feet to the point of beginning, **LESS AND EXCEPT**, if any, that portion of State Lease No. 2651 that may lie within the above described tract, containing approximately **117 acres**, all as more particularly outlined in a plat on file in the Office of Mineral Resources, Department of Natural Resources, as provided by the applicant. All bearings, distances and coordinates are based on Louisiana Coordinate System of 1927, (North or South Zone) where applicable.

NOTE: The above description of the Tract nominated for lease has been provided and corrected, where required, exclusively by the nomination party. Any mineral lease selected from this Tract and awarded by the Louisiana State Mineral Board shall be without warranty of any kind, either express, implied, or statutory, including, but not limited to, the implied warranties of merchantability and fitness for a particular purpose. Should the mineral lease awarded by the Louisiana State Mineral Board be subsequently modified, cancelled or abrogated due to the existence of conflicting leases, operating agreements, private claims or other future obligations or conditions which may affect all or any portion of the leased Tract, it shall not relieve the Lessee of the obligation to pay any bonus due thereon to the Louisiana State Mineral Board, nor shall the Louisiana State Mineral Board be obligated to refund any consideration paid by the Lessor prior to such modification, cancellation, or abrogation, including, but not limited to, bonuses, rentals and royalties.

NOTE: The Department of Wildlife and Fisheries has designated certain areas in the coastal waters of the State of Louisiana as Oyster Seed Bed Areas. The exact location of those Seed Bed Areas must be obtained from the Department of Wildlife and Fisheries and any work done under a mineral lease from the State of Louisiana may necessarily be conducted in conformity with the rules and regulations promulgated by the said Department of Wildlife and Fisheries for Oyster Seed Bed Areas.

NOTE: The State of Louisiana does hereby reserve, and this lease shall be subject to, the imprescriptible right of surface use in the nature of a servitude in favor of the Department of Natural Resources and/or the Department of Wildlife and Fisheries, including its Offices and

Commissions, for the sole purpose of implementing, constructing, servicing and maintaining approved coastal zone management and/or restoration projects. Utilization of any and all rights derived under this lease by the mineral lessee, its agents, successors or assigns, shall not interfere with nor hinder the reasonable surface use by the Department of Natural Resources and/or the Department of Wildlife and Fisheries, its Offices or Commissions, as herein above reserved.

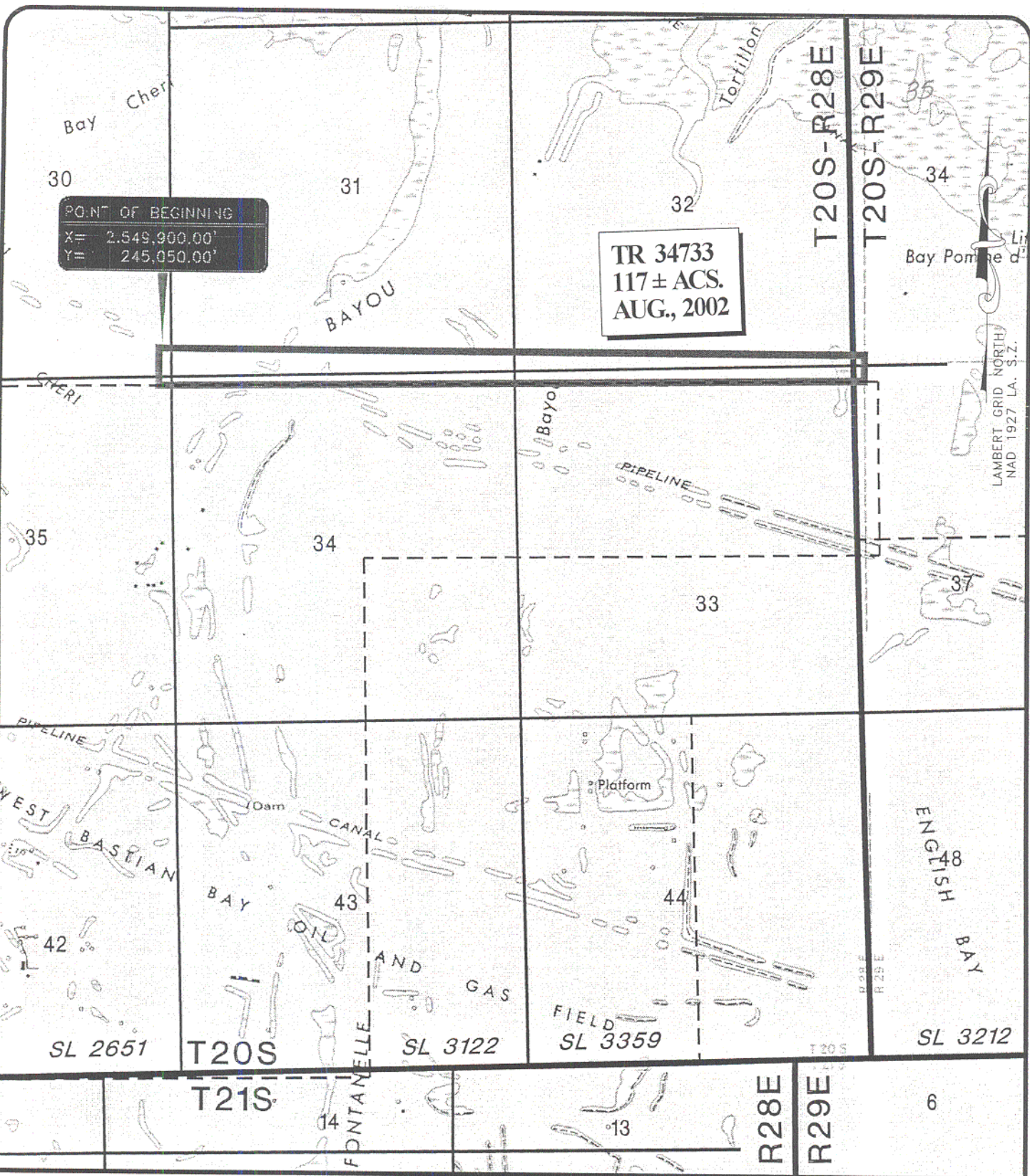
Applicant: Petro-Land Resources, Inc.

Bidder	Cash Payment	Price / Acre	Rental	Oil	Gas	Other

POINT OF BEGINNING
X= 2,549,900.00'
Y= 245,050.00'

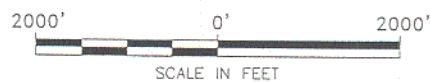
TR 34733
117 ± ACS.
AUG., 2002

LAMBERT GRID NORTH
NAD 1927 LA. S.Z.



REPRODUCED FROM USGS "BURAS"
1993 EDITION QUADRANGLE

PLAQUEMINES PARISH, LOUISIANA



TRACT 34734 - WITHDRAWN

TRACT 34735 - Plaquemines Parish, Louisiana

All of the lands now or formerly constituting the beds and bottoms of all water bodies of every nature and description, and all islands and other lands formed by accretion, where allowed by law, or by reliction, and excepting tax adjudicated lands, belonging to the State of Louisiana and not presently under mineral lease on August 14, 2002, situated in Plaquemines Parish, Louisiana, and more particularly described as follows: Beginning at a point having Coordinates of X = 2,546,300.00 and Y = 312,500.00; thence South 6,000.68 feet to a point on the North line of State Lease No. 1794, as amended, having Coordinates of X = 2,546,300.00 and Y = 306,499.32; thence West 5,757.60 feet along the North line of said State Lease No. 1794, as amended, to its most Northerly Northwest corner having Coordinates of X = 2,540,542.40 and Y = 306,499.32; thence South 5,000.00 feet along the Western boundary of said State Lease No. 1794, as amended, to an interior corner having Coordinates of X = 2,540,542.40 and Y = 301,499.32; thence South 63 degrees 26 minutes 06 seconds West 1,341.64 feet along the Western boundary of said State Lease No. 1794, as amended, to an interior corner having Coordinates of X = 2,539,342.40 and Y = 300,899.32; thence South 21 degrees 13 minutes 56 seconds West 3,003.17 feet along the Western boundary of said State Lease No. 1794, as amended, to a point having Coordinates of X = 2,538,254.81 and Y = 298,100.00; thence West 872.81 feet to a point having Coordinates of X = 2,537,382.00 and Y = 298,100.00; thence North 14,400.00 feet to a point having Coordinates of X = 2,537,382.00 and Y = 312,500.00; thence East 8,918.00 feet to the point of beginning, containing approximately **1,022 acres**, all as more particularly outlined in a plat on file in the Office of Mineral Resources, Department of Natural Resources, as provided by the applicant. All bearings, distances and coordinates are based on Louisiana Coordinate System of 1927, (North or South Zone) where applicable.

NOTE: The above description of the Tract nominated for lease has been provided and corrected, where required, exclusively by the nomination party. Any mineral lease selected from this Tract and awarded by the Louisiana State Mineral Board shall be without warranty of any kind, either express, implied, or statutory, including, but not limited to, the implied warranties of merchantability and fitness for a particular purpose. Should the mineral lease awarded by the Louisiana State Mineral Board be subsequently modified, cancelled or abrogated due to the existence of conflicting leases, operating agreements, private claims or other future obligations or conditions which may affect all or any portion of the leased Tract, it shall not relieve the Lessee of the obligation to pay any bonus due thereon to the Louisiana State Mineral Board, nor shall the Louisiana State Mineral Board be obligated to refund any consideration paid by the Lessor prior to such modification, cancellation, or abrogation, including, but not limited to, bonuses, rentals and royalties.

NOTE: The Department of Wildlife and Fisheries has designated certain areas in the coastal waters of the State of Louisiana as Oyster Seed Bed Areas. The exact location of those Seed Bed Areas must be obtained from the Department of Wildlife and Fisheries and any work done under a mineral

lease from the State of Louisiana may necessarily be conducted in conformity with the rules and regulations promulgated by the said Department of Wildlife and Fisheries for Oyster Seed Bed Areas.

NOTE: The State of Louisiana does hereby reserve, and this lease shall be subject to, the imprescriptible right of surface use in the nature of a servitude in favor of the Department of Natural Resources and/or the Department of Wildlife and Fisheries, including its Offices and Commissions, for the sole purpose of implementing, constructing, servicing and maintaining approved coastal zone management and/or restoration projects. Utilization of any and all rights derived under this lease by the mineral lessee, its agents, successors or assigns, shall not interfere with nor hinder the reasonable surface use by the Department of Natural Resources and/or the Department of Wildlife and Fisheries, its Offices or Commissions, as herein above reserved.

Applicant: Big Delta Exploration

Bidder	Cash Payment	Price / Acre	Rental	Oil	Gas	Other

P.O.B.
X = 2,546,300.00
Y = 312,500.00

T 18 S - R 15 E

LONG BAY

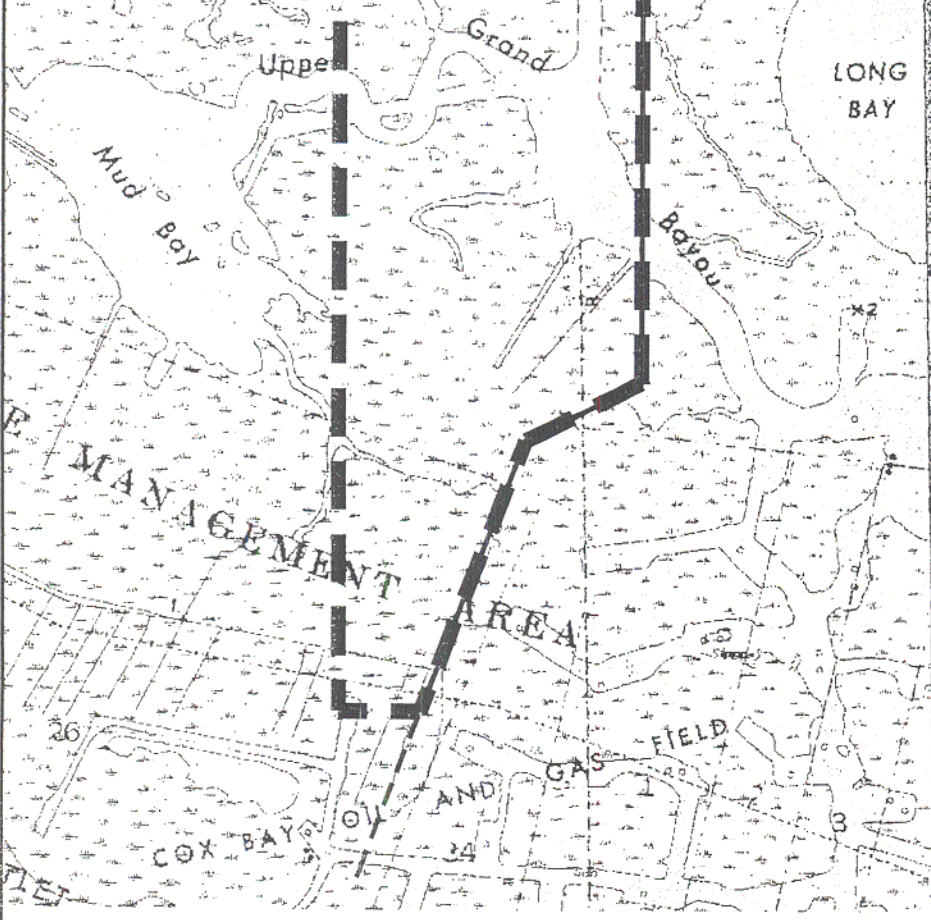
TR 34735
1,022 ± ACS.
AUG., 2002

LONG BAY

NAD 1927 (South Zone)

LONG BAY

S. L. 1794



PLAQUEMINES PARISH, LOUISIANA

SCALE : 1" = 2000'

TRACT 34736 - Plaquemines Parish, Louisiana

All of the lands now or formerly constituting the beds and bottoms of all water bodies of every nature and description, and all islands and other lands formed by accretion, where allowed by law, or by reliction, and excepting tax adjudicated lands, belonging to the State of Louisiana and not presently under mineral lease on August 14, 2002, situated in Plaquemines Parish, Louisiana, and more particularly described as follows: Beginning at a point having Coordinates of X = 2,546,300.00 and Y = 312,500.00; thence East 15,700.00 feet to a point having Coordinates of X = 2,562,000.00 and Y = 312,500.00; thence South 7,200.00 feet to a point having Coordinates of X = 2,562,000.00 and Y = 305,300.00; thence West approximately 12,102 feet to a point on the Eastern boundary of State Lease No. 1794, as amended; thence North approximately 1,199 feet along the Eastern boundary of said State Lease No. 1794, as amended, to its most Northerly Northeast corner; thence West approximately 3,598 feet along the North line of said State Lease No. 1794, as amended, to a point having Coordinates of X = 2,546,300.00 and Y = 306,499.32; thence North 6,000.68 feet to the point of beginning, containing approximately **2,414 acres**, all as more particularly outlined in a plat on file in the Office of Mineral Resources, Department of Natural Resources, as provided by the applicant. All bearings, distances and coordinates are based on Louisiana Coordinate System of 1927, (North or South Zone) where applicable.

NOTE: The above description of the Tract nominated for lease has been provided and corrected, where required, exclusively by the nomination party. Any mineral lease selected from this Tract and awarded by the Louisiana State Mineral Board shall be without warranty of any kind, either express, implied, or statutory, including, but not limited to, the implied warranties of merchantability and fitness for a particular purpose. Should the mineral lease awarded by the Louisiana State Mineral Board be subsequently modified, cancelled or abrogated due to the existence of conflicting leases, operating agreements, private claims or other future obligations or conditions which may affect all or any portion of the leased Tract, it shall not relieve the Lessee of the obligation to pay any bonus due thereon to the Louisiana State Mineral Board, nor shall the Louisiana State Mineral Board be obligated to refund any consideration paid by the Lessor prior to such modification, cancellation, or abrogation, including, but not limited to, bonuses, rentals and royalties.

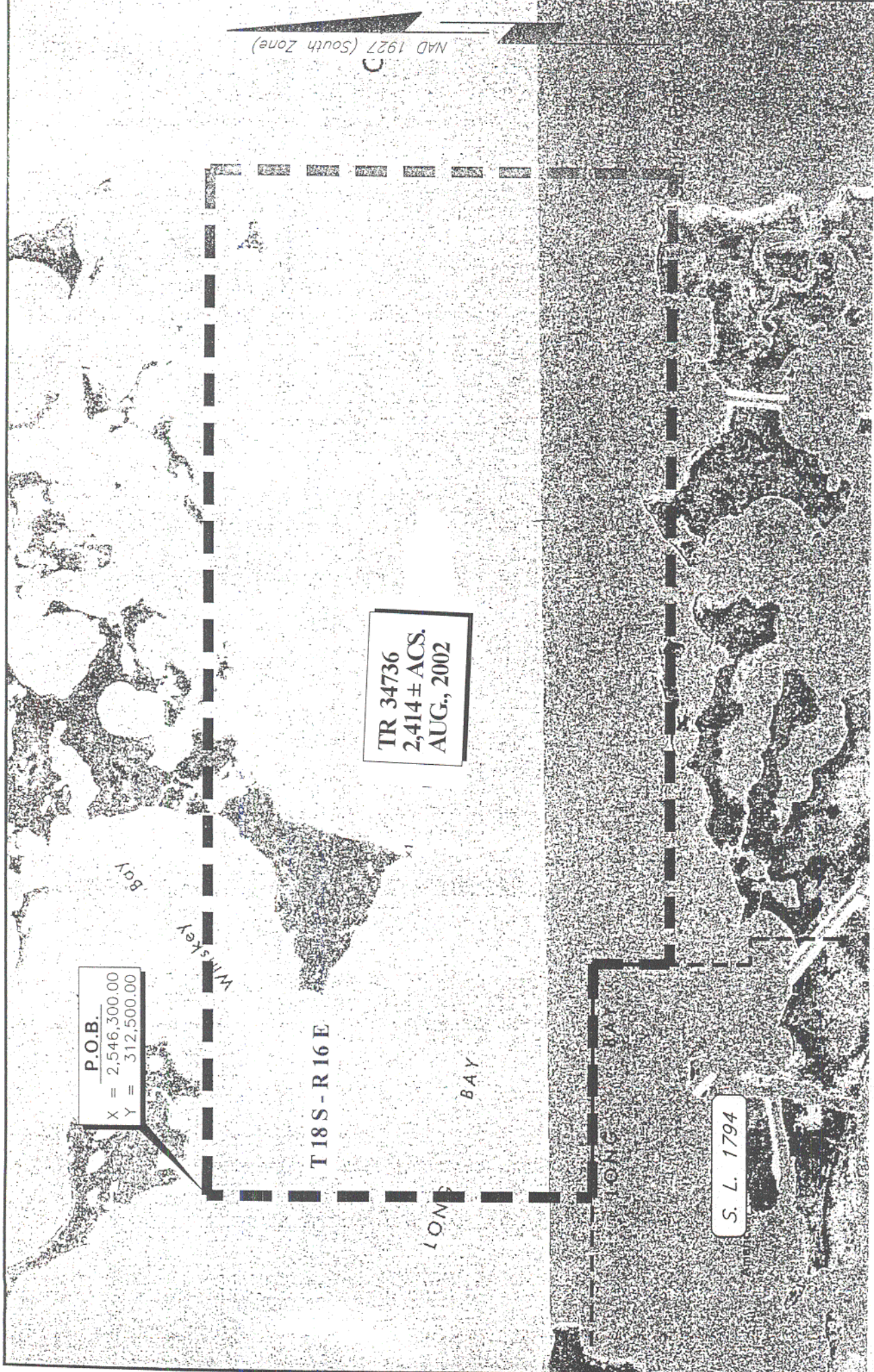
NOTE: The Department of Wildlife and Fisheries has designated certain areas in the coastal waters of the State of Louisiana as Oyster Seed Bed Areas. The exact location of those Seed Bed Areas must be obtained from the Department of Wildlife and Fisheries and any work done under a mineral lease from the State of Louisiana may necessarily be conducted in conformity with the rules and regulations promulgated by the said Department of Wildlife and Fisheries for Oyster Seed Bed Areas.

NOTE: The State of Louisiana does hereby reserve, and this lease shall be subject to, the imprescriptible right of surface use in the nature of a servitude in favor of the Department of Natural Resources and/or the

Department of Wildlife and Fisheries, including its Offices and Commissions, for the sole purpose of implementing, constructing, servicing and maintaining approved coastal zone management and/or restoration projects. Utilization of any and all rights derived under this lease by the mineral lessee, its agents, successors or assigns, shall not interfere with nor hinder the reasonable surface use by the Department of Natural Resources and/or the Department of Wildlife and Fisheries, its Offices or Commissions, as herein above reserved.

Applicant: Big Delta Exploration

Bidder	Cash Payment	Price / Acre	Rental	Oil	Gas	Other



TRACT 34737 - Plaquemines Parish, Louisiana

All of the lands now or formerly constituting the beds and bottoms of all water bodies of every nature and description, and all islands and other lands formed by accretion, where allowed by law, or by reliction, and excepting tax adjudicated lands, belonging to the State of Louisiana and not presently under mineral lease on August 14, 2002, situated in Plaquemines Parish, Louisiana, and more particularly described as follows: Beginning at a point having Coordinates of X = 2,470,017.80 and Y = 383,030.13; thence North 8,270.97 feet to a point having Coordinates of X = 2,470,017.80 and Y = 391,301.10; thence East approximately 8,066.00 feet to a point on the West line of State Lease No. 335, as amended; thence Southerly along the West line of said State Lease No. 335 to a point having a Coordinate of Y = 383,030.13; thence West approximately 8,066.00 feet to the point of beginning, **LESS AND EXCEPT**, if any, that portion of State Lease No. 335, as amended, that may lie within the above described tract, containing approximately **1,186 acres**, all as more particularly outlined in a plat on file in the Office of Mineral Resources, Department of Natural Resources, as provided by the applicant. All bearings, distances and coordinates are based on Louisiana Coordinate System of 1927, (North or South Zone) where applicable.

NOTE: The above description of the Tract nominated for lease has been provided and corrected, where required, exclusively by the nomination party. Any mineral lease selected from this Tract and awarded by the Louisiana State Mineral Board shall be without warranty of any kind, either express, implied, or statutory, including, but not limited to, the implied warranties of merchantability and fitness for a particular purpose. Should the mineral lease awarded by the Louisiana State Mineral Board be subsequently modified, cancelled or abrogated due to the existence of conflicting leases, operating agreements, private claims or other future obligations or conditions which may affect all or any portion of the leased Tract, it shall not relieve the Lessee of the obligation to pay any bonus due thereon to the Louisiana State Mineral Board, nor shall the Louisiana State Mineral Board be obligated to refund any consideration paid by the Lessor prior to such modification, cancellation, or abrogation, including, but not limited to, bonuses, rentals and royalties.

NOTE: The Department of Wildlife and Fisheries has designated certain areas in the coastal waters of the State of Louisiana as Oyster Seed Bed Areas. The exact location of those Seed Bed Areas must be obtained from the Department of Wildlife and Fisheries and any work done under a mineral lease from the State of Louisiana may necessarily be conducted in conformity with the rules and regulations promulgated by the said Department of Wildlife and Fisheries for Oyster Seed Bed Areas.

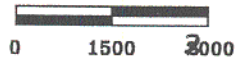
NOTE: The State of Louisiana does hereby reserve, and this lease shall be subject to, the imprescriptible right of surface use in the nature of a servitude in favor of the Department of Natural Resources and/or the Department of Wildlife and Fisheries, including its Offices and Commissions, for the sole purpose of implementing, constructing, servicing

and maintaining approved coastal zone management and/or restoration projects. Utilization of any and all rights derived under this lease by the mineral lessee, its agents, successors or assigns, shall not interfere with nor hinder the reasonable surface use by the Department of Natural Resources and/or the Department of Wildlife and Fisheries, its Offices or Commissions, as herein above reserved.

Applicant: Mark A. O'Neal & Associates, Inc.

Bidder	Cash Payment	Price / Acre	Rental	Oil	Gas	Other

GRAND LAKE
Plaquemines Parish, Louisiana



Scale: 1" = 3,000'



TRACT 34738 - Portion of Block 34, Main Pass Area, Revised, Plaquemines Parish, Louisiana

All of the lands now or formerly constituting the beds and bottoms of all water bodies of every nature and description, and all islands and other lands formed by accretion, where allowed by law, or by reliction, and excepting tax adjudicated lands, belonging to the State of Louisiana and not presently under mineral lease on August 14, 2002, situated in Plaquemines Parish, Louisiana, and more particularly described as follows: Beginning at the Southeast corner of Block 34, Main Pass Area, Revised, having Coordinates of X = 2,605,850.00 and Y = 278,080.00; thence West 3,257.78 feet along the South line of said Block 34 to the Southeast corner of State Lease No. 6421, as amended, having Coordinates of X = 2,602,592.22 and Y = 278,080.00; thence along the boundary of said State Lease No. 6421 the following courses: North 29 degrees 35 minutes 32 seconds East 258.76 feet to a point having Coordinates of X = 2,602,720.00 and Y = 278,305.01; North 53 degrees 07 minutes 48 seconds East 525.00 feet to a point having Coordinates of X = 2,603,140.00 and Y = 278,620.01; North 62 degrees 52 minutes 10 seconds East 1,359.60 feet to a point having Coordinates of X = 2,604,350.00 and Y = 279,240.01; North 52 degrees 13 minutes 28 seconds East 506.06 feet to a point having Coordinates of X = 2,604,750.00 and Y = 279,550.01; North 31 degrees 53 minutes 27 seconds East 530.00 feet to a point having Coordinates of X = 2,605,030.00 and Y = 280,000.01; North 01 degrees 25 minutes 55 seconds East 400.13 feet to a point having Coordinates of X = 2,605,040.00 and Y = 280,400.01; North 20 degrees 33 minutes 22 seconds West 427.20 feet to a point having Coordinates of X = 2,604,890.00 and Y = 280,800.01; North 48 degrees 34 minutes 35 seconds West 453.43 feet to a point having Coordinates of X = 2,604,550.00 and Y = 281,100.01; North 70 degrees 16 minutes 40 seconds West 563.03 feet to a point having Coordinates of X = 2,604,020.00 and Y = 281,290.01; North 89 degrees 24 minutes 34 seconds West 970.05 feet to a point having Coordinates of X = 2,603,050.00 and Y = 281,300.01; South 83 degrees 13 minutes 28 seconds West 1,017.10 feet to a point having Coordinates of X = 2,602,040.00 and Y = 281,180.01; South 76 degrees 23 minutes 58 seconds West 1,275.77 feet to a point having Coordinates of X = 2,600,800.01 and Y = 280,880.01; South 80 degrees 08 minutes 03 seconds West 466.90 feet to a point having Coordinates of X = 2,600,340.01 and Y = 280,800.02 and North 88 degrees 29 minutes 37 seconds West 138.20 feet to its Northwest corner, also being a point on the Eastern boundary of State Lease No. 1349, as amended, having Coordinates of X = 2,600,201.86 and Y = 280,803.65; thence North 1,102.35 feet along the Eastern boundary of said State Lease No. 1349 to its most Easterly Northeast corner having Coordinates of X = 2,600,201.86 and Y = 281,906.00; thence North 2,441.00 feet to a point having Coordinates of X = 2,600,201.86 and Y = 284,347.00; thence West 2,482.86 feet to a point on the Northern boundary of said State Lease No. 1349 having Coordinates of X = 2,597,719.00 and Y = 284,347.00; thence North 57 degrees 56 minutes 48 seconds West 1,903.12 feet along the Northern boundary of said State Lease No. 1349 to a point having Coordinates of X = 2,596,106.00 and Y = 285,357.00; thence Westerly approximately 1,433 feet along the Northern

boundary of said State Lease No. 1349 to its Northwest corner, said corner also being a point on the West line of said Block 34; thence Northeasterly approximately 7,751 feet along the West line of said Block 34 to its Northwest corner; thence East approximately 9,128 feet along the North line of said Block 34 to its Northeast corner having Coordinates of X = 2,605,850.00 and Y = 292,830.00; thence South 14,750.00 feet along the East line of said Block 34 to the point of beginning, containing approximately **2,477 acres**, all as more particularly outlined in a plat on file in the Office of Mineral Resources, Department of Natural Resources, as provided by the applicant. All bearings, distances and coordinates are based on Louisiana Coordinate System of 1927, (North or South Zone) where applicable.

NOTE: The above description of the Tract nominated for lease has been provided and corrected, where required, exclusively by the nomination party. Any mineral lease selected from this Tract and awarded by the Louisiana State Mineral Board shall be without warranty of any kind, either express, implied, or statutory, including, but not limited to, the implied warranties of merchantability and fitness for a particular purpose. Should the mineral lease awarded by the Louisiana State Mineral Board be subsequently modified, cancelled or abrogated due to the existence of conflicting leases, operating agreements, private claims or other future obligations or conditions which may affect all or any portion of the leased Tract, it shall not relieve the Lessee of the obligation to pay any bonus due thereon to the Louisiana State Mineral Board, nor shall the Louisiana State Mineral Board be obligated to refund any consideration paid by the Lessor prior to such modification, cancellation, or abrogation, including, but not limited to, bonuses, rentals and royalties.

NOTE: The State of Louisiana does hereby reserve, and this lease shall be subject to, the imprescriptible right of surface use in the nature of a servitude in favor of the Department of Natural Resources and/or the Department of Wildlife and Fisheries, including its Offices and Commissions, for the sole purpose of implementing, constructing, servicing and maintaining approved coastal zone management and/or restoration projects. Utilization of any and all rights derived under this lease by the mineral lessee, its agents, successors or assigns, shall not interfere with nor hinder the reasonable surface use by the Department of Natural Resources and/or the Department of Wildlife and Fisheries, its Offices or Commissions, as herein above reserved.

Applicant: The Ian Petroleum Group

Bidder	Cash Payment	Price / Acre	Rental	Oil	Gas	Other

MAIN PASS AREA REVISED

BLK 33

BLOCK

BLK 34

TR 34738
2,477 ± ACS.
AUG., 2002

BLK 35

S.L. 15947

S.L. 1349

S.L. 6421

S.L. 16765

BLK 51

S.L. 1350

S.L. 6420

P.O.B.

X = 2,605,850.00
Y = 278,080.00

S.L. 16767

PLAQUEMINES PARISH, LOUISIANA

SCALE : 1" = 2000'

TRACT 34739 - Portion of Block 32, Main Pass Area, Revised, Plaquemines Parish, Louisiana

All of the lands now or formerly constituting the beds and bottoms of all water bodies of every nature and description, and all islands and other lands formed by accretion, where allowed by law, or by reliction, and excepting tax adjudicated lands, belonging to the State of Louisiana and not presently under mineral lease on August 14, 2002, situated in Plaquemines Parish, Louisiana, and more particularly described as follows: Beginning at the Northwest corner of Block 32, Main Pass Area, Revised, having Coordinates of X = 2,605,850.00 and Y = 307,580.00; thence East 7,375.00 feet along the North line of said Block 32 to a point having Coordinates of X = 2,613,225.00 and Y = 307,580.00; thence South 10,300.00 feet to a point on the North line of State Lease No. 1958, as amended, having Coordinates of X = 2,613,225.00 and Y = 297,280.00; thence West 7,375.00 feet along the North line of said State Lease No. 1958 to its Northwest corner, also being a point on the West line of said Block 32 having Coordinates of X = 2,605,850.00 and Y = 297,280.00; thence North 4,300.00 feet along the West line of said Block 32 to the Southwest corner of State Lease No. 16821 having Coordinates of X = 2,605,850.00 and Y = 301,580.00; thence East 3,100.00 feet along the South line of said State Lease No. 16821 to its Southeast corner having Coordinates of X = 2,608,950.00 and Y = 301,580.00; thence North 3,200.00 feet along the East line of said State Lease No. 16821 to its Northeast corner having Coordinates of X = 2,608,950.00 and Y = 304,780.00; thence North 47 degrees 54 minutes 39 seconds West 4,177.32 feet along the Northern boundary of said State Lease No. 16821 to the point of beginning, containing **1,416.49 acres**, all as more particularly outlined in a plat on file in the Office of Mineral Resources, Department of Natural Resources, as provided by the applicant. All bearings, distances and coordinates are based on Louisiana Coordinate System of 1927, (North or South Zone) where applicable.

NOTE: The above description of the Tract nominated for lease has been provided and corrected, where required, exclusively by the nomination party. Any mineral lease selected from this Tract and awarded by the Louisiana State Mineral Board shall be without warranty of any kind, either express, implied, or statutory, including, but not limited to, the implied warranties of merchantability and fitness for a particular purpose. Should the mineral lease awarded by the Louisiana State Mineral Board be subsequently modified, cancelled or abrogated due to the existence of conflicting leases, operating agreements, private claims or other future obligations or conditions which may affect all or any portion of the leased Tract, it shall not relieve the Lessee of the obligation to pay any bonus due thereon to the Louisiana State Mineral Board, nor shall the Louisiana State Mineral Board be obligated to refund any consideration paid by the Lessor prior to such modification, cancellation, or abrogation, including, but not limited to, bonuses, rentals and royalties.

NOTE: The State of Louisiana does hereby reserve, and this lease shall be subject to, the imprescriptible right of surface use in the nature of a

servitude in favor of the Department of Natural Resources and/or the Department of Wildlife and Fisheries, including its Offices and Commissions, for the sole purpose of implementing, constructing, servicing and maintaining approved coastal zone management and/or restoration projects. Utilization of any and all rights derived under this lease by the mineral lessee, its agents, successors or assigns, shall not interfere with nor hinder the reasonable surface use by the Department of Natural Resources and/or the Department of Wildlife and Fisheries, its Offices or Commissions, as herein above reserved.

Applicant: The Ian Petroleum Group

Bidder	Cash Payment	Price / Acre	Rental	Oil	Gas	Other

MAIN PASS AREA, REVISED

52

Blk. 24

P.O.B.
X = 2,605,850.00
Y = 307,580.00

Blk. 25

Blk. 26

MEXICO

S. L. 16821

S. L. 14441

Blk. 33

TR 34739
1,416.49 ± ACS.
AUG., 2002

Blk. 32

Blk. 31

S. L. 17293

S. L. 1958

NAD 1927 (South Zone)

Blk. 34

Blk. 35

Blk. 36

PLAQUEMINES

PARISH,

LOUISIANA

SCALE : 1" = 3000'

TRACT 34740 - Portion of Block 32, Main Pass Area, Revised, Plaquemines Parish, Louisiana

All of the lands now or formerly constituting the beds and bottoms of all water bodies of every nature and description, and all islands and other lands formed by accretion, where allowed by law, or by reliction, and excepting tax adjudicated lands, belonging to the State of Louisiana and not presently under mineral lease on August 14, 2002, situated in Plaquemines Parish, Louisiana, and more particularly described as follows: Beginning at the Northeast corner of Block 32, Main Pass Area, Revised, having Coordinates of X = 2,620,600.00 and Y = 307,580.00; thence South 1,053.57 feet along the East line of said Block 32 to the Northeast corner of State Lease No. 14441 having Coordinates of X = 2,620,600.00 and Y = 306,526.43; thence West 2,170.57 feet along the North line of said State Lease No. 14441 to its Northwest corner having Coordinates of X = 2,618,429.43 and Y = 306,526.43; thence South 4,310.07 feet along the West line of said State Lease No. 14441 to its Southwest corner having Coordinates of X = 2,618,429.43 and Y = 302,216.36; thence East 2,170.57 feet along the South line of said State Lease No. 14441 to its Southeast corner, also being a point on the East line of said Block 32 having Coordinates of X = 2,620,600.00 and Y = 302,216.36; thence South 2,131.47 feet along the East line of said Block 32 to the Northeast corner of State Lease No. 17293 having Coordinates of X = 2,620,600.00 and Y = 300,084.89; thence South 63 degrees 15 minutes 14 seconds West 4,210.49 feet along the Northern boundary of said State Lease No. 17293 to its Northwest corner having Coordinates of X = 2,616,840.00 and Y = 298,190.00; thence South 910.00 feet along the West line of said State Lease No. 17293 to its Southwest corner, also being a point on the North line of State Lease No. 1958, as amended, having Coordinates of X = 2,616,840.00 and Y = 297,280.00; thence West 3,615.00 feet along the North line of said State Lease No. 1958 to a point having Coordinates of X = 2,613,225.00 and Y = 297,280.00; thence North 10,300.00 feet to a point on the North line of said Block 32 having Coordinates of X = 2,613,225.00 and Y = 307,580.00; thence East 7,375.00 feet along the North line of said Block 32 to the point of beginning, containing **1,368.76 acres**, all as more particularly outlined in a plat on file in the Office of Mineral Resources, Department of Natural Resources, as provided by the applicant. All bearings, distances and coordinates are based on Louisiana Coordinate System of 1927, (North or South Zone) where applicable.

NOTE: The above description of the Tract nominated for lease has been provided and corrected, where required, exclusively by the nomination party. Any mineral lease selected from this Tract and awarded by the Louisiana State Mineral Board shall be without warranty of any kind, either express, implied, or statutory, including, but not limited to, the implied warranties of merchantability and fitness for a particular purpose. Should the mineral lease awarded by the Louisiana State Mineral Board be subsequently modified, cancelled or abrogated due to the existence of conflicting leases, operating agreements, private claims or other future obligations or conditions which may affect all or any portion of the leased Tract, it shall not relieve the Lessee of the obligation to

pay any bonus due thereon to the Louisiana State Mineral Board, not shall the Louisiana State Mineral Board be obligated to refund any consideration paid by the Lessor prior to such modification, cancellation, or abrogation, including, but not limited to, bonuses, rentals and royalties.

NOTE: The State of Louisiana does hereby reserve, and this lease shall be subject to, the imprescriptible right of surface use in the nature of a servitude in favor of the Department of Natural Resources and/or the Department of Wildlife and Fisheries, including its Offices and Commissions, for the sole purpose of implementing, constructing, servicing and maintaining approved coastal zone management and/or restoration projects. Utilization of any and all rights derived under this lease by the mineral lessee, its agents, successors or assigns, shall not interfere with nor hinder the reasonable surface use by the Department of Natural Resources and/or the Department of Wildlife and Fisheries, its Offices or Commissions, as herein above reserved.

Applicant: The Ian Petroleum Group

Bidder	Cash Payment	Price / Acre	Rental	Oil	Gas	Other

MAIN PASS AREA, REVISED

Blk. 24

Blk. 25

55

Blk. 26

P.O.B.
X = 2,620,600.00
Y = 307,580.00

MEXICO

S. L. 16821

OF

S. L. 14441

TR 34740
1,368.76 ± ACS.
AUG., 2002

Blk. 33

Blk. 32

Blk. 31

NAD 1927 (South Zone)

GULF

S. L. 17293

S. L. 1958

Blk. 34

Blk. 35

Blk. 36

PLAQUEMINES

PARISH,

LOUISIANA

SCALE : 1" = 3000'

TRACT 34741 - Portion of Block 12, Main Pass Area, Revised, Plaquemines and St. Bernard Parishes, Louisiana

All of the lands now or formerly constituting the beds and bottoms of all water bodies of every nature and description, and all islands and other lands formed by accretion, where allowed by law, or by reliction, and excepting tax adjudicated lands, belonging to the State of Louisiana and not presently under mineral lease on August 14, 2002, situated in Plaquemines and St. Bernard Parishes, Louisiana, and more particularly described as follows: Beginning at a point having Coordinates of X = 2,577,099.99 and Y = 358,259.32, said point also being on the West line of Block 12, Main Pass Area, Revised; thence North 81 degrees 37 minutes 40 seconds East 1,831.53 feet to a point having Coordinates of X = 2,578,912.00 and Y = 358,526.00; thence South 52 degrees 42 minutes 20 seconds East 2,969.08 feet to a point having Coordinates of X = 2,581,274.00 and Y = 356,727.00; thence South 39 degrees 04 minutes 52 seconds West 897.88 feet to a point having Coordinates of X = 2,580,707.96 and Y = 356,030.02, said point also being the Northernmost corner of State of Louisiana - State Lease No. 16490; thence on and along the Western and Southern boundaries of said State of Louisiana - State Lease No. 16490 the following courses and distances, to-wit: South 39 degrees 04 minutes 52 seconds West 1,000.00 feet to a point having Coordinates of X = 2,580,077.54 and Y = 355,253.76; South 56 degrees 24 minutes 02 seconds East 703.22 feet to a point having Coordinates of X = 2,580,663.27 and Y = 354,864.60; and South 39 degrees 04 minutes 52 seconds West 1,305.97 feet to a point having Coordinates of X = 2,579,839.96 and Y = 353,850.84; thence North 56 degrees 24 minutes 03 seconds West 3,239.76 feet to a point having Coordinates of X = 2,577,141.47 and Y = 355,643.66, said point also being on said West line of said Block 12, Main Pass Area, Revised; thence North 00 degrees 54 minutes 30 seconds West 2,615.99 feet on and along said west line of said Block 12, Main Pass Area, Revised, to the point of beginning, containing approximately **282 acres**, all as more particularly outlined in a plat on file in the Office of Mineral Resources, Department of Natural Resources, as provided by the applicant. All bearings, distances and coordinates are based on Louisiana Coordinate System of 1927, (North or South Zone) where applicable.

NOTE: The above description of the Tract nominated for lease has been provided and corrected, where required, exclusively by the nomination party. Any mineral lease selected from this Tract and awarded by the Louisiana State Mineral Board shall be without warranty of any kind, either express, implied, or statutory, including, but not limited to, the implied warranties of merchantability and fitness for a particular purpose. Should the mineral lease awarded by the Louisiana State Mineral Board be subsequently modified, cancelled or abrogated due to the existence of conflicting leases, operating agreements, private claims or other future obligations or conditions which may affect all or any portion of the leased Tract, it shall not relieve the Lessee of the obligation to pay any bonus due thereon to the Louisiana State Mineral Board, nor shall the Louisiana State Mineral Board be obligated to refund any consideration

paid by the Lessor prior to such modification, cancellation, or abrogation, including, but not limited to, bonuses, rentals and royalties.

NOTE: The Department of Wildlife and Fisheries has designated certain areas in the coastal waters of the State of Louisiana as Oyster Seed Bed Areas. The exact location of those Seed Bed Areas must be obtained from the Department of Wildlife and Fisheries and any work done under a mineral lease from the State of Louisiana may necessarily be conducted in conformity with the rules and regulations promulgated by the said Department of Wildlife and Fisheries for Oyster Seed Bed Areas.

NOTE: The State of Louisiana does hereby reserve, and this lease shall be subject to, the imprescriptible right of surface use in the nature of a servitude in favor of the Department of Natural Resources and/or the Department of Wildlife and Fisheries, including its Offices and Commissions, for the sole purpose of implementing, constructing, servicing and maintaining approved coastal zone management and/or restoration projects. Utilization of any and all rights derived under this lease by the mineral lessee, its agents, successors or assigns, shall not interfere with nor hinder the reasonable surface use by the Department of Natural Resources and/or the Department of Wildlife and Fisheries, its Offices or Commissions, as herein above reserved.

Applicant: Robert A. Schroeder, Inc.

Bidder	Cash Payment	Price / Acre	Rental	Oil	Gas	Other

ALL COORDINATES, BEARINGS AND DISTANCES
ARE GRID, AND ARE ON THE LOUISIANA
LAMBERT PLANE COORDINATE SYSTEM,
SOUTH ZONE, 1927 NORTH AMERICAN
DATUM.

TRACT 34742 - Portion of Block 12, Main Pass Area, Revised, St. Bernard Parish, Louisiana

All of the lands now or formerly constituting the beds and bottoms of all water bodies of every nature and description, and all islands and other lands formed by accretion, where allowed by law, or by reliction, and excepting tax adjudicated lands, belonging to the State of Louisiana and not presently under mineral lease on August 14, 2002, situated in St. Bernard Parish, Louisiana, and more particularly described as follows: Beginning at a point having Coordinates of X = 2,581,400.00 and Y = 366,580.00, said point also being on the North line of Block 12, Main Pass Area, Revised; thence East 5,987.72 feet on and along said North line of said Block 12, Main Pass Area, Revised, to a point having Coordinates of X = 2,587,387.72 and Y = 366,580.00; thence South 53 degrees 26 minutes 02 seconds West 2,042.80 feet to a point having coordinates of X = 2,585,747.00 and Y = 365,363.00; thence South 700.00 feet to a point having Coordinates of X = 2,585,747.00 and Y = 364,663.00; thence West 2,250.00 feet to a point having Coordinates of X = 2,583,497.00 and Y = 364,663.00; thence North 47 degrees 34 minutes 03 seconds West 2,841.18 feet to the point of beginning, containing approximately **168.08 acres**, all as more particularly outlined in a plat on file in the Office of Mineral Resources, Department of Natural Resources, as provided by the applicant. All bearings, distances and coordinates are based on Louisiana Coordinate System of 1927, (North or South Zone) where applicable.

NOTE: The above description of the Tract nominated for lease has been provided and corrected, where required, exclusively by the nomination party. Any mineral lease selected from this Tract and awarded by the Louisiana State Mineral Board shall be without warranty of any kind, either express, implied, or statutory, including, but not limited to, the implied warranties of merchantability and fitness for a particular purpose. Should the mineral lease awarded by the Louisiana State Mineral Board be subsequently modified, cancelled or abrogated due to the existence of conflicting leases, operating agreements, private claims or other future obligations or conditions which may affect all or any portion of the leased Tract, it shall not relieve the Lessee of the obligation to pay any bonus due thereon to the Louisiana State Mineral Board, nor shall the Louisiana State Mineral Board be obligated to refund any consideration paid by the Lessor prior to such modification, cancellation, or abrogation, including, but not limited to, bonuses, rentals and royalties.

NOTE: The State of Louisiana does hereby reserve, and this lease shall be subject to, the imprescriptible right of surface use in the nature of a servitude in favor of the Department of Natural Resources and/or the Department of Wildlife and Fisheries, including its Offices and Commissions, for the sole purpose of implementing, constructing, servicing and maintaining approved coastal zone management and/or restoration projects. Utilization of any and all rights derived under this lease by the mineral lessee, its agents, successors or assigns, shall not interfere with nor hinder the reasonable surface use by the Department of Natural

Resources and/or the Department of Wildlife and Fisheries, its Offices or Commissions, as herein above reserved.

Applicant: Robert A. Schroeder, Inc.

Bidder	Cash Payment	Price / Acre	Rental	Oil	Gas	Other

TRACT 34743 - Plaquemines and St. Bernard Parishes, Louisiana

All of the lands now or formerly constituting the beds and bottoms of all water bodies of every nature and description, and all islands and other lands formed by accretion, where allowed by law, or by reliction, and excepting tax adjudicated lands, belonging to the State of Louisiana and not presently under mineral lease on August 14, 2002, situated in Plaquemines and St. Bernard Parishes, Louisiana, and more particularly described as follows: Beginning at a point having Coordinates of X = 2,576,350.00 and Y = 366,580.00, said point also being the Southwest corner of Block 1, Main Pass Area, Revised, and the Northwest corner of Block 12, Main Pass Area, Revised; thence Southerly 8,548 feet, more or less, on and along the West line of said Block 12, Main Pass Area, Revised, to a point on a Northern boundary of State of Louisiana - State Lease No. 195, as amended; thence Northwesterly 8,169 feet, more or less, on and along said Northern boundary of said State of Louisiana - State Lease No. 195, as amended, to a point having a Coordinate of X = 2,570,800.00; thence North 6,806 feet, more or less, to a point having Coordinates of X = 2,570,800.00 and Y = 368,355.00, said point also being the Southeast corner of State of Louisiana - State Lease No. 16590; thence North 1,950.00 feet on and along the Eastern boundary of said State of Louisiana - State Lease No. 16590 to a point having Coordinates of X = 2,570,800.00 and Y = 370,305.00, said point also being the Northeast corner of said State of Louisiana - State Lease No. 16590; thence North 5,418.00 feet to a point having Coordinates of X = 2,570,800.00 and Y = 375,723.00; thence East 5,550.00 feet to a point having Coordinates of X = 2,576,350.00 and Y = 375,723.00, said point also being on the West line of said Block 1, Main Pass Area, Revised; thence South 9,143.00 feet on and along said West line of said Block 1, Main Pass Area, Revised, to the point of beginning, **LESS AND EXCEPT**, if any, all that portion of Tract No. 34424 that may lie within the above described tract, containing approximately **1,487 acres**, all as more particularly outlined in a plat on file in the Office of Mineral Resources, Department of Natural Resources, as provided by the applicant. All bearings, distances and coordinates are based on Louisiana Coordinate System of 1927, (North or South Zone) where applicable.

NOTE: The above description of the Tract nominated for lease has been provided and corrected, where required, exclusively by the nomination party. Any mineral lease selected from this Tract and awarded by the Louisiana State Mineral Board shall be without warranty of any kind, either express, implied, or statutory, including, but not limited to, the implied warranties of merchantability and fitness for a particular purpose. Should the mineral lease awarded by the Louisiana State Mineral Board be subsequently modified, cancelled or abrogated due to the existence of conflicting leases, operating agreements, private claims or other future obligations or conditions which may affect all or any portion of the leased Tract, it shall not relieve the Lessee of the obligation to pay any bonus due thereon to the Louisiana State Mineral Board, nor shall the Louisiana State Mineral Board be obligated to refund any consideration

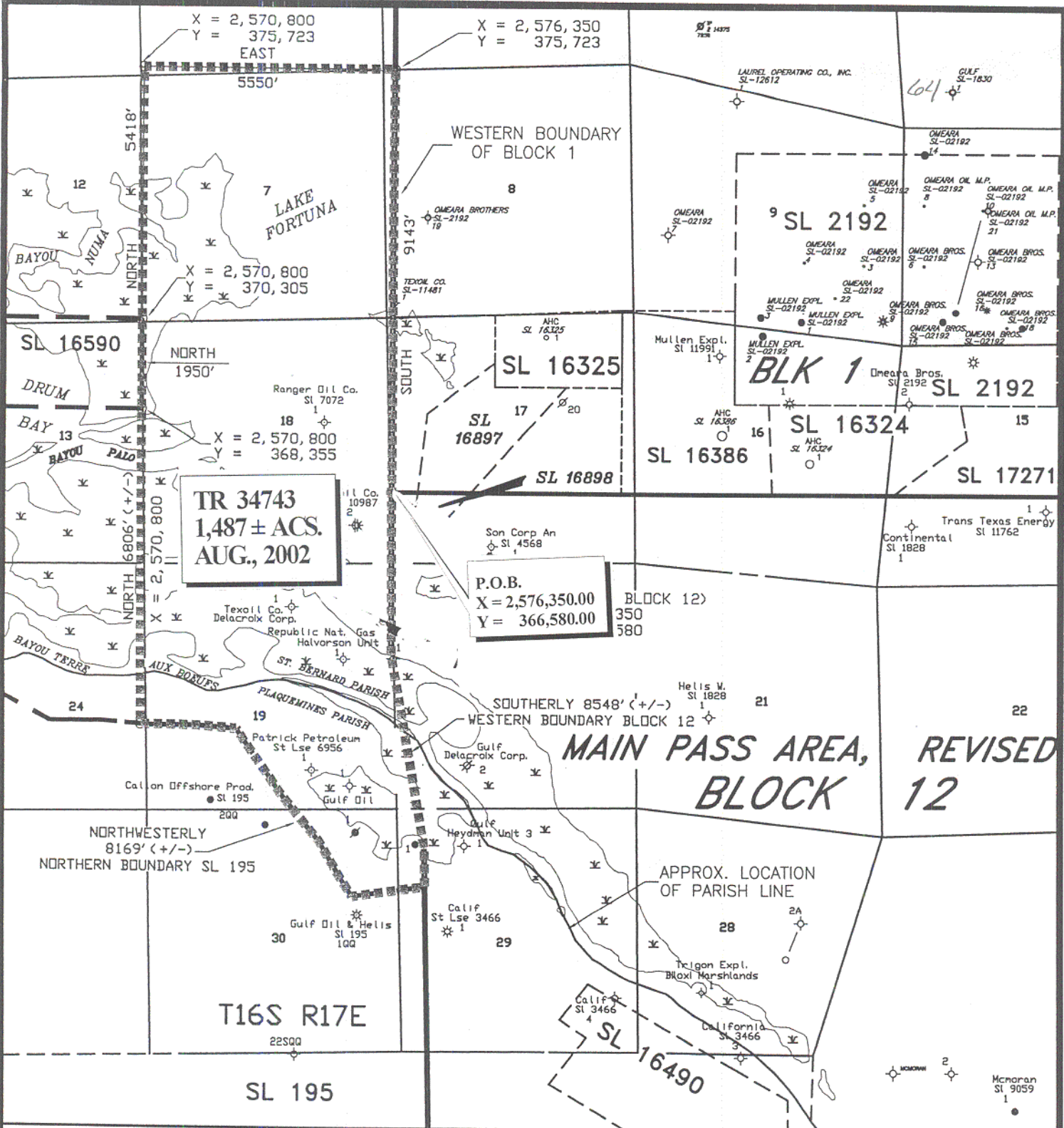
paid by the Lessor prior to such modification, cancellation, or abrogation, including, but not limited to, bonuses, rentals and royalties.

NOTE: The Department of Wildlife and Fisheries has designated certain areas in the coastal waters of the State of Louisiana as Oyster Seed Bed Areas. The exact location of those Seed Bed Areas must be obtained from the Department of Wildlife and Fisheries and any work done under a mineral lease from the State of Louisiana may necessarily be conducted in conformity with the rules and regulations promulgated by the said Department of Wildlife and Fisheries for Oyster Seed Bed Areas.

NOTE: The State of Louisiana does hereby reserve, and this lease shall be subject to, the imprescriptible right of surface use in the nature of a servitude in favor of the Department of Natural Resources and/or the Department of Wildlife and Fisheries, including its Offices and Commissions, for the sole purpose of implementing, constructing, servicing and maintaining approved coastal zone management and/or restoration projects. Utilization of any and all rights derived under this lease by the mineral lessee, its agents, successors or assigns, shall not interfere with nor hinder the reasonable surface use by the Department of Natural Resources and/or the Department of Wildlife and Fisheries, its Offices or Commissions, as herein above reserved.

Applicant: Robert A. Schroeder, Inc.

Bidder	Cash Payment	Price / Acre	Rental	Oil	Gas	Other



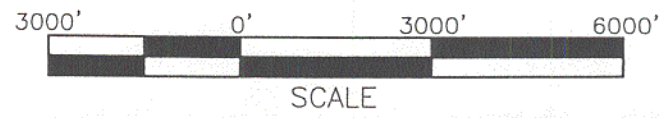
TR 34743
1,487 ± ACS.
AUG., 2002

P.O.B.
X = 2,576,350.00
Y = 366,580.00

MAIN PASS AREA,
BLOCK 12
REVISED 12



T16S-R17E
ST. BERNARD PARISH, LOUISIANA
PLAQUEMINES PARISH, LOUISIANA
SCALE 1" = 3000'



ALL COORDINATES, BEARINGS AND DISTANCES
ARE GRID, AND ARE ON THE LOUISIANA
LAMBERT PLANE COORDINATE SYSTEM,
SOUTH ZONE, 1927 NORTH AMERICAN
DATUM.

TRACT 34744 - St. Bernard Parish, Louisiana

All of the lands now or formerly constituting the beds and bottoms of all water bodies of every nature and description, and all islands and other lands formed by accretion, where allowed by law, or by reliction, and excepting tax adjudicated lands, belonging to the State of Louisiana and not presently under mineral lease on August 14, 2002, situated in St. Bernard Parish, Louisiana, and more particularly described as follows: Beginning at a point having Coordinates of X = 2,524,733.90 and Y = 447,168.46; thence South 9,168.46 feet to a point having Coordinates of X = 2,524,733.90 and Y = 438,000.00; thence North 65 degrees 00 minutes 00 seconds West 16,283.70 feet to a point having Coordinates of X = 2,509,975.86 and Y = 444,881.79; thence North 2,286.67 feet to a point having Coordinates of X = 2,509,975.86 and Y = 447,168.46; thence East 14,758.04 feet to the point of beginning, containing approximately **1,494 acres**, all as more particularly outlined in a plat on file in the Office of Mineral Resources, Department of Natural Resources, as provided by the applicant. All bearings, distances and coordinates are based on Louisiana Coordinate System of 1927, (North or South Zone) where applicable.

NOTE: The above description of the Tract nominated for lease has been provided and corrected, where required, exclusively by the nomination party. Any mineral lease selected from this Tract and awarded by the Louisiana State Mineral Board shall be without warranty of any kind, either express, implied, or statutory, including, but not limited to, the implied warranties of merchantability and fitness for a particular purpose. Should the mineral lease awarded by the Louisiana State Mineral Board be subsequently modified, cancelled or abrogated due to the existence of conflicting leases, operating agreements, private claims or other future obligations or conditions which may affect all or any portion of the leased Tract, it shall not relieve the Lessee of the obligation to pay any bonus due thereon to the Louisiana State Mineral Board, nor shall the Louisiana State Mineral Board be obligated to refund any consideration paid by the Lessor prior to such modification, cancellation, or abrogation, including, but not limited to, bonuses, rentals and royalties.

NOTE: The Office of Mineral Resources will require a minimum bonus of \$180 per acre and a minimum royalty of 21%.

NOTE: The Department of Wildlife and Fisheries has designated certain areas in the coastal waters of the State of Louisiana as Oyster Seed Bed Areas. The exact location of those Seed Bed Areas must be obtained from the Department of Wildlife and Fisheries and any work done under a mineral lease from the State of Louisiana may necessarily be conducted in conformity with the rules and regulations promulgated by the said Department of Wildlife and Fisheries for Oyster Seed Bed Areas.

NOTE: The State of Louisiana does hereby reserve, and this lease shall be subject to, the imprescriptible right of surface use in the nature of a servitude in favor of the Department of Natural Resources and/or the Department of Wildlife and Fisheries, including its Offices and

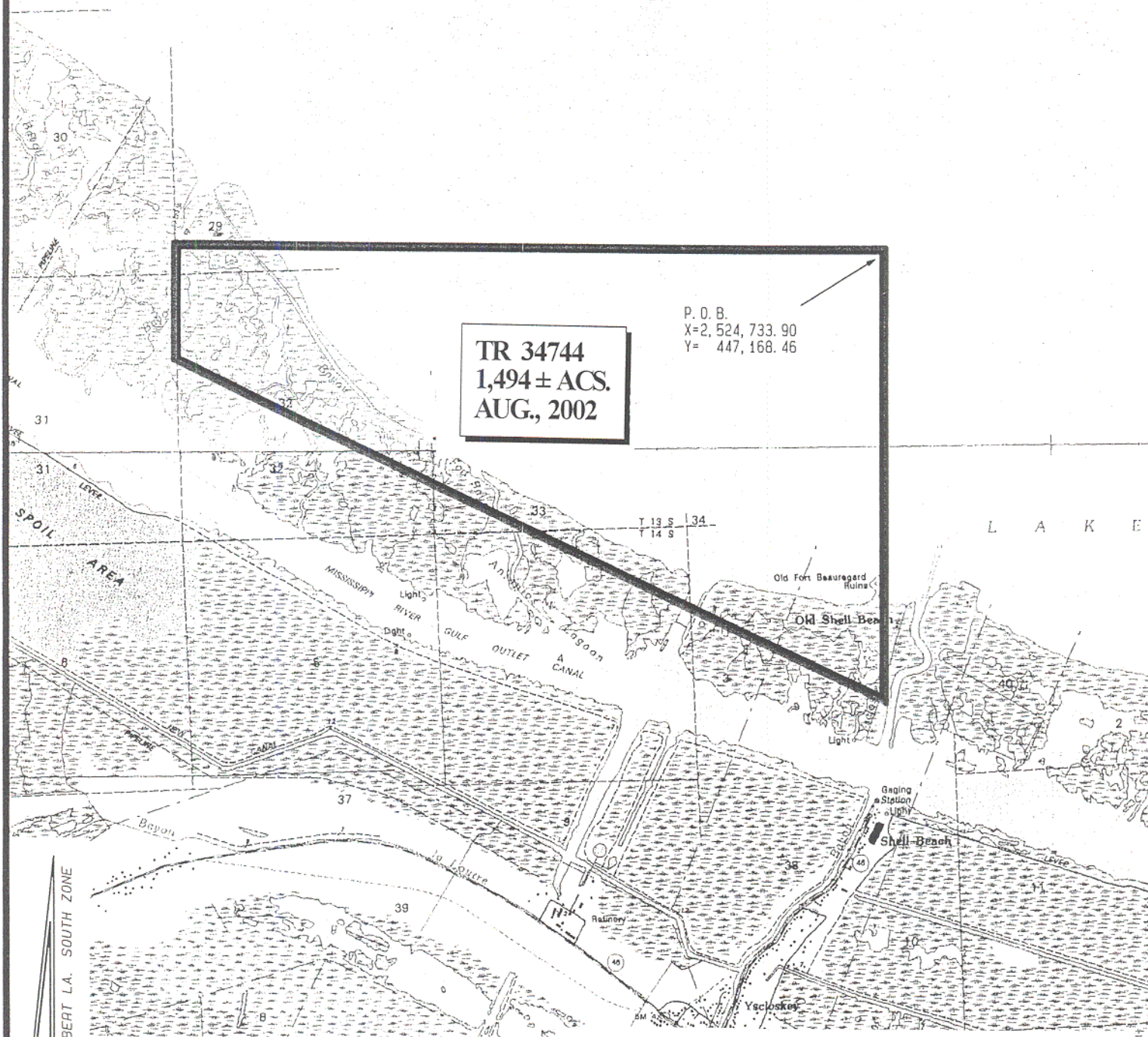
Commissions, for the sole purpose of implementing, constructing, servicing and maintaining approved coastal zone management and/or restoration projects. Utilization of any and all rights derived under this lease by the mineral lessee, its agents, successors or assigns, shall not interfere with nor hinder the reasonable surface use by the Department of Natural Resources and/or the Department of Wildlife and Fisheries, its Offices or Commissions, as herein above reserved.

Applicant: Varnado Minerals

Bidder	Cash Payment	Price / Acre	Rental	Oil	Gas	Other

LAKE BORGNE

67



Topography obtained from USC&GS Quadrangles
"PROCTOR POINT, LA.", 1994 Edition &
"YSCLOSKEY, LA.", 1967 Edition, Revised 1994.

St. Bernard Parish, Louisiana

3000' 0' 3000'

TRACT 34745 - St. Bernard Parish, Louisiana

All of the lands now or formerly constituting the beds and bottoms of all water bodies of every nature and description, and all islands and other lands formed by accretion, where allowed by law, or by reliction, and excepting tax adjudicated lands, belonging to the State of Louisiana and not presently under mineral lease on August 14, 2002, situated in St. Bernard Parish, Louisiana, and more particularly described as follows: Beginning at a point having Coordinates of X = 2,532,158.09 and Y = 461,926.51; thence West 7,424.19 feet to a point having Coordinates of X = 2,524,733.90 and Y = 461,926.51; thence North 14,758.05 feet to the Southwest corner of State Lease No. 17013 having Coordinates of X = 2,524,733.90 and Y = 476,684.56; thence East 858.10 feet to a point on the South line of said State Lease No. 17013, also being the Northwest corner of State Lease No. 17147, having Coordinates of X = 2,525,592.00 and Y = 476,684.56; thence along the boundary of said State Lease No. 17147 the following courses: South 2,598.56 feet, South 39 degrees 14 minutes 29 seconds East 1,569.85 feet and South 1,146.58 feet to the Northwest corner of State Lease No. 17014 having Coordinates of X = 2,526,585.07 and Y = 471,723.59; thence South 2,418.06 feet along the West line of said State Lease No. 17014 to its Southwest corner having Coordinates of X = 2,526,585.07 and Y = 469,305.53; thence East 2,630.71 feet along the South line of said State Lease No. 17014 to its Southeast corner, also being the most Southerly Southwest corner of said State Lease No. 17147, having Coordinates of X = 2,529,215.78 and Y = 469,305.53; thence along the boundary of said State Lease No. 17147 the following courses: East 795.00 feet, North 5,094.47 feet and North 33 degrees 49 minutes 14 seconds West 2,749.88 feet to the Northeast corner of said State Lease No. 17147, also being the most Southerly Southwest corner of State Lease No. 17076, having Coordinates of X = 2,528,480.21 and Y = 476,684.56; thence East 939.86 feet along the South line of said State Lease No. 17076 to its Southeast corner having Coordinates of X = 2,529,420.07 and Y = 476,684.56; thence East 2,738.02 feet to a point having Coordinates of X = 2,532,158.09 and Y = 476,684.56; thence South 14,758.05 feet to the point of beginning, containing approximately **1,902.03 acres**, all as more particularly outlined in a plat on file in the Office of Mineral Resources, Department of Natural Resources, as provided by the applicant. All bearings, distances and coordinates are based on Louisiana Coordinate System of 1927, (North or South Zone) where applicable.

NOTE: The above description of the Tract nominated for lease has been provided and corrected, where required, exclusively by the nomination party. Any mineral lease selected from this Tract and awarded by the Louisiana State Mineral Board shall be without warranty of any kind, either express, implied, or statutory, including, but not limited to, the implied warranties of merchantability and fitness for a particular purpose. Should the mineral lease awarded by the Louisiana State Mineral Board be subsequently modified, cancelled or abrogated due to the existence of conflicting leases, operating agreements, private claims or other future obligations or conditions which may affect all or any portion of the leased Tract, it shall not relieve the Lessee of the obligation to

pay any bonus due thereon to the Louisiana State Mineral Board, not shall the Louisiana State Mineral Board be obligated to refund any consideration paid by the Lessor prior to such modification, cancellation, or abrogation, including, but not limited to, bonuses, rentals and royalties.

NOTE: The Office of Mineral Resources will require a minimum bonus of \$230 per acre and a minimum royalty of 23%.

NOTE: The Department of Wildlife and Fisheries has designated certain areas in the coastal waters of the State of Louisiana as Oyster Seed Bed Areas. The exact location of those Seed Bed Areas must be obtained from the Department of Wildlife and Fisheries and any work done under a mineral lease from the State of Louisiana may necessarily be conducted in conformity with the rules and regulations promulgated by the said Department of Wildlife and Fisheries for Oyster Seed Bed Areas.

NOTE: The State of Louisiana does hereby reserve, and this lease shall be subject to, the imprescriptible right of surface use in the nature of a servitude in favor of the Department of Natural Resources and/or the Department of Wildlife and Fisheries, including its Offices and Commissions, for the sole purpose of implementing, constructing, servicing and maintaining approved coastal zone management and/or restoration projects. Utilization of any and all rights derived under this lease by the mineral lessee, its agents, successors or assigns, shall not interfere with nor hinder the reasonable surface use by the Department of Natural Resources and/or the Department of Wildlife and Fisheries, its Offices or Commissions, as herein above reserved.

Applicant: Varnado Minerals

Bidder	Cash Payment	Price / Acre	Rental	Oil	Gas	Other

LAKE
BORGNE

SL 17077

70

SL 17010

SL 17076

SL 17013

SL 17147

L

A

K

E

SL 17014

SL 17146

SL 17012

TR 34745
1,902.03 ± ACS.
AUG., 2002

P. O. B.
X=2,532,158.09
Y= 461,926.51

Topography obtained from USC&GS Quadrangles
"PROCTOR POINT, LA.", 1994 Edition,

St. Bernard Parish, Louisiana

3000' 0' 3000'

NAD 27
LAMBERT LA. SOUTH ZONE

TRACT 34746 - St. Bernard Parish, Louisiana

All of the lands now or formerly constituting the beds and bottoms of all water bodies of every nature and description, and all islands and other lands formed by accretion, where allowed by law, or by reliction, and excepting tax adjudicated lands, belonging to the State of Louisiana and not presently under mineral lease on August 14, 2002, situated in St. Bernard Parish, Louisiana, and more particularly described as follows: Beginning at a point having Coordinates of X = 2,524,733.90 and Y = 454,547.48; thence North 7,379.03 feet to a point having Coordinates of X = 2,524,733.90 and Y = 461,926.51; thence East 14,758.05 feet to a point having Coordinates of X = 2,539,491.95 and Y = 461,926.51; thence South 7,379.03 feet to a point having Coordinates of X = 2,539,491.95 and Y = 454,547.48; thence West 14,758.05 feet to the point of beginning, containing approximately **2,500.00 acres**, all as more particularly outlined in a plat on file in the Office of Mineral Resources, Department of Natural Resources, as provided by the applicant. All bearings, distances and coordinates are based on Louisiana Coordinate System of 1927, (North or South Zone) where applicable.

NOTE: The above description of the Tract nominated for lease has been provided and corrected, where required, exclusively by the nomination party. Any mineral lease selected from this Tract and awarded by the Louisiana State Mineral Board shall be without warranty of any kind, either express, implied, or statutory, including, but not limited to, the implied warranties of merchantability and fitness for a particular purpose. Should the mineral lease awarded by the Louisiana State Mineral Board be subsequently modified, cancelled or abrogated due to the existence of conflicting leases, operating agreements, private claims or other future obligations or conditions which may affect all or any portion of the leased Tract, it shall not relieve the Lessee of the obligation to pay any bonus due thereon to the Louisiana State Mineral Board, nor shall the Louisiana State Mineral Board be obligated to refund any consideration paid by the Lessor prior to such modification, cancellation, or abrogation, including, but not limited to, bonuses, rentals and royalties.

NOTE: The Office of Mineral Resources will require a minimum bonus of \$230 per acre and a minimum royalty of 23%.

NOTE: The Department of Wildlife and Fisheries has designated certain areas in the coastal waters of the State of Louisiana as Oyster Seed Bed Areas. The exact location of those Seed Bed Areas must be obtained from the Department of Wildlife and Fisheries and any work done under a mineral lease from the State of Louisiana may necessarily be conducted in conformity with the rules and regulations promulgated by the said Department of Wildlife and Fisheries for Oyster Seed Bed Areas.

NOTE: The State of Louisiana does hereby reserve, and this lease shall be subject to, the imprescriptible right of surface use in the nature of a servitude in favor of the Department of Natural Resources and/or the Department of Wildlife and Fisheries, including its Offices and

Commissions, for the sole purpose of implementing, constructing, servicing and maintaining approved coastal zone management and/or restoration projects. Utilization of any and all rights derived under this lease by the mineral lessee, its agents, successors or assigns, shall not interfere with nor hinder the reasonable surface use by the Department of Natural Resources and/or the Department of Wildlife and Fisheries, its Offices or Commissions, as herein above reserved.

Applicant: Varnado Minerals

Bidder	Cash Payment	Price / Acre	Rental	Oil	Gas	Other

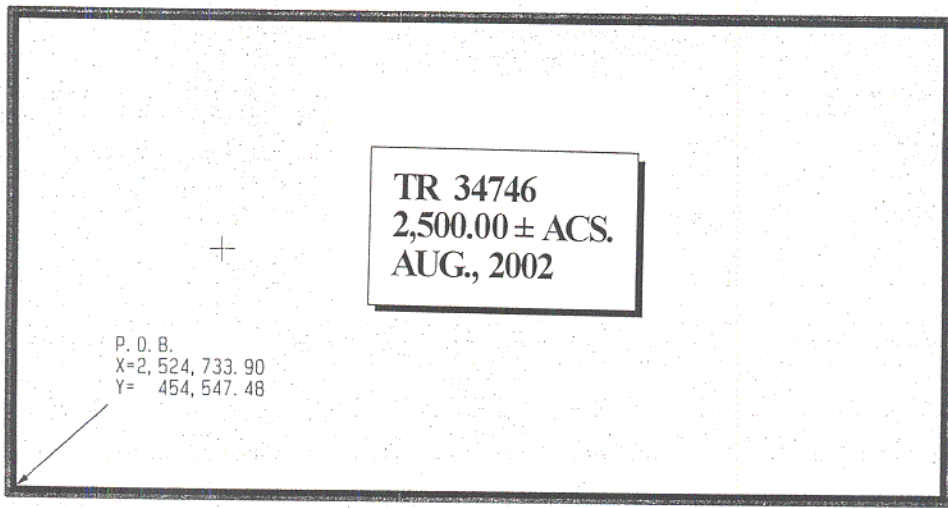
SL 17146
SB 17012

SL 17014
SL 17147

73

LAKE
BORGNE

R G N E



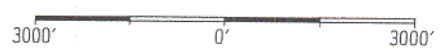
TR 34746
2,500.00 ± ACS.
AUG., 2002

P. O. B.
X=2,524,733.90
Y= 454,547.48

NAD 27
LAMBERT LA. SOUTH ZONE

Topography obtained from USC&GS Quadrangles
"POINTE AUX MARCHETTES, LA.", 1994 Edition,
"PROCTOR POINT, LA.", 1994 Edition.

St. Bernard Parish, Louisiana



TRACT 34747 - St. Bernard Parish, Louisiana

All of the lands now or formerly constituting the beds and bottoms of all water bodies of every nature and description, and all islands and other lands formed by accretion, where allowed by law, or by reliction, and excepting tax adjudicated lands, belonging to the State of Louisiana and not presently under mineral lease on August 14, 2002, situated in St. Bernard Parish, Louisiana, and more particularly described as follows: Beginning at a point having Coordinates of X = 2,524,733.90 and Y = 454,547.48; thence East 14,758.05 feet to a point having Coordinates of X = 2,539,491.95 and Y = 454,547.48; thence South 7,379.02 feet to a point having Coordinates of X = 2,539,491.95 and Y = 447,168.46; thence West 14,758.05 feet to a point having Coordinates of X = 2,524,733.90 and Y = 447,168.46; thence North 7,379.02 feet to the point of beginning, containing approximately **2,500.00 acres**, all as more particularly outlined in a plat on file in the Office of Mineral Resources, Department of Natural Resources, as provided by the applicant. All bearings, distances and coordinates are based on Louisiana Coordinate System of 1927, (North or South Zone) where applicable.

NOTE: The above description of the Tract nominated for lease has been provided and corrected, where required, exclusively by the nomination party. Any mineral lease selected from this Tract and awarded by the Louisiana State Mineral Board shall be without warranty of any kind, either express, implied, or statutory, including, but not limited to, the implied warranties of merchantability and fitness for a particular purpose. Should the mineral lease awarded by the Louisiana State Mineral Board be subsequently modified, cancelled or abrogated due to the existence of conflicting leases, operating agreements, private claims or other future obligations or conditions which may affect all or any portion of the leased Tract, it shall not relieve the Lessee of the obligation to pay any bonus due thereon to the Louisiana State Mineral Board, nor shall the Louisiana State Mineral Board be obligated to refund any consideration paid by the Lessor prior to such modification, cancellation, or abrogation, including, but not limited to, bonuses, rentals and royalties.

NOTE: The Office of Mineral Resources will require a minimum bonus of \$230 per acre and a minimum royalty of 23%.

NOTE: The Department of Wildlife and Fisheries has designated certain areas in the coastal waters of the State of Louisiana as Oyster Seed Bed Areas. The exact location of those Seed Bed Areas must be obtained from the Department of Wildlife and Fisheries and any work done under a mineral lease from the State of Louisiana may necessarily be conducted in conformity with the rules and regulations promulgated by the said Department of Wildlife and Fisheries for Oyster Seed Bed Areas.

NOTE: The State of Louisiana does hereby reserve, and this lease shall be subject to, the imprescriptible right of surface use in the nature of a servitude in favor of the Department of Natural Resources and/or the Department of Wildlife and Fisheries, including its Offices and

Commissions, for the sole purpose of implementing, constructing, servicing and maintaining approved coastal zone management and/or restoration projects. Utilization of any and all rights derived under this lease by the mineral lessee, its agents, successors or assigns, shall not interfere with nor hinder the reasonable surface use by the Department of Natural Resources and/or the Department of Wildlife and Fisheries, its Offices or Commissions, as herein above reserved.

Applicant: Varnado Minerals

Bidder	Cash Payment	Price / Acre	Rental	Oil	Gas	Other

76

LAKE BORGNE



P. O. B.
X=2,524,733.90
Y= 454,547.48

TR 34747
2,500.00 ± ACS.
AUG., 2002

L A K E B O R G N E

LAKE BORGNE

Old Fort Beauregard
Ruins
Old Shell Beach

Topography obtained from USC&GS Quadrangles
"LENA LAGOON, LA.", 1993 Edition & YSCLOSKEY,
LA.", 1967 Edition, Revised 1994.
"POINTE AUX MARCHETTES, LA.", 1994 Edition,
"PROCTOR POINT, LA.", 1994 Edition.

St. Bernard Parish, Louisiana

3000' 0' 3000'

NAD 27 LAMBERT LA. SOUTH ZONE

TRACT 34748 - St. Bernard Parish, Louisiana

All of the lands now or formerly constituting the beds and bottoms of all water bodies of every nature and description, and all islands and other lands formed by accretion, where allowed by law, or by reliction, and excepting tax adjudicated lands, belonging to the State of Louisiana and not presently under mineral lease on August 14, 2002, situated in St. Bernard Parish, Louisiana, and more particularly described as follows: Beginning at a point having Coordinates of X = 2,524,733.90 and Y = 447,168.46; thence East 7,379.03 feet to a point having Coordinates of X = 2,532,112.93 and Y = 447,168.46; thence South 9,168.46 feet to a point having Coordinates of X = 2,532,112.93 and Y = 438,000.00; thence West 7,379.03 feet to a point having Coordinates of X = 2,524,733.90 and Y = 438,000.00; thence North 9,168.46 feet to the point of beginning, containing approximately **1,375 acres**, all as more particularly outlined in a plat on file in the Office of Mineral Resources, Department of Natural Resources, as provided by the applicant. All bearings, distances and coordinates are based on Louisiana Coordinate System of 1927, (North or South Zone) where applicable.

NOTE: The above description of the Tract nominated for lease has been provided and corrected, where required, exclusively by the nomination party. Any mineral lease selected from this Tract and awarded by the Louisiana State Mineral Board shall be without warranty of any kind, either express, implied, or statutory, including, but not limited to, the implied warranties of merchantability and fitness for a particular purpose. Should the mineral lease awarded by the Louisiana State Mineral Board be subsequently modified, cancelled or abrogated due to the existence of conflicting leases, operating agreements, private claims or other future obligations or conditions which may affect all or any portion of the leased Tract, it shall not relieve the Lessee of the obligation to pay any bonus due thereon to the Louisiana State Mineral Board, nor shall the Louisiana State Mineral Board be obligated to refund any consideration paid by the Lessor prior to such modification, cancellation, or abrogation, including, but not limited to, bonuses, rentals and royalties.

NOTE: The Office of Mineral Resources will require a minimum bonus of \$180 per acre and a minimum royalty of 21%.

NOTE: The Department of Wildlife and Fisheries has designated certain areas in the coastal waters of the State of Louisiana as Oyster Seed Bed Areas. The exact location of those Seed Bed Areas must be obtained from the Department of Wildlife and Fisheries and any work done under a mineral lease from the State of Louisiana may necessarily be conducted in conformity with the rules and regulations promulgated by the said Department of Wildlife and Fisheries for Oyster Seed Bed Areas.

NOTE: The State of Louisiana does hereby reserve, and this lease shall be subject to, the imprescriptible right of surface use in the nature of a servitude in favor of the Department of Natural Resources and/or the Department of Wildlife and Fisheries, including its Offices and

Commissions, for the sole purpose of implementing, constructing, servicing and maintaining approved coastal zone management and/or restoration projects. Utilization of any and all rights derived under this lease by the mineral lessee, its agents, successors or assigns, shall not interfere with nor hinder the reasonable surface use by the Department of Natural Resources and/or the Department of Wildlife and Fisheries, its Offices or Commissions, as herein above reserved.

Applicant: Varnado Minerals

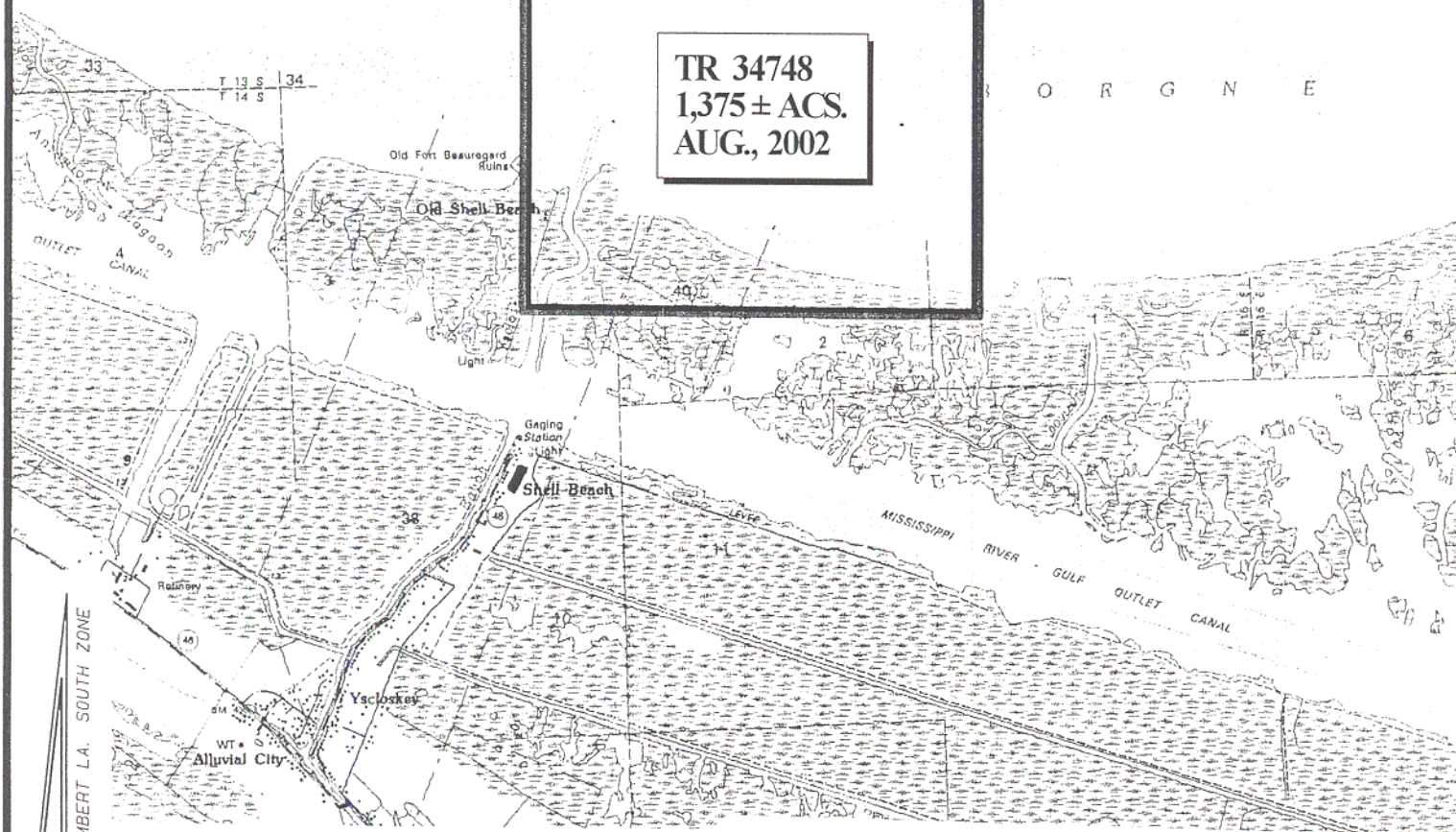
Bidder	Cash Payment	Price / Acre	Rental	Oil	Gas	Other

LAKE BORGNE

79

P. O. B.
X=2,524,733.90
Y= 447,168.46

TR 34748
1,375 ± ACS.
AUG., 2002



Topography obtained from USC&GS Quadrangles
"PROCTOR POINT, LA.", 1994 Edition &
"YSCLOSKEY, LA.", 1967 Edition, Revised 1994.

St. Bernard Parish, Louisiana

3000' 0' 3000'

NAD 27 - LAMBERT LA. SOUTH ZONE

TRACT 34749 - St. Bernard Parish, Louisiana

All of the lands now or formerly constituting the beds and bottoms of all water bodies of every nature and description, and all islands and other lands formed by accretion, where allowed by law, or by reliction, and excepting tax adjudicated lands, belonging to the State of Louisiana and not presently under mineral lease on August 14, 2002, situated in St. Bernard Parish, Louisiana, and more particularly described as follows: Beginning at a point having Coordinates of X = 2,539,491.95 and Y = 447,168.46; thence South 9,168.46 feet to a point having Coordinates of X = 2,539,491.95 and Y = 438,000.00; thence West 7,379.02 feet to a point having Coordinates of X = 2,532,112.93 and Y = 438,000.00; thence North 9,168.46 feet to a point having Coordinates of X = 2,532,112.93 and Y = 447,168.46; thence East 7,379.02 feet to the point of beginning, containing approximately **1,449 acres**, all as more particularly outlined in a plat on file in the Office of Mineral Resources, Department of Natural Resources, as provided by the applicant. All bearings, distances and coordinates are based on Louisiana Coordinate System of 1927, (North or South Zone) where applicable.

NOTE: The above description of the Tract nominated for lease has been provided and corrected, where required, exclusively by the nomination party. Any mineral lease selected from this Tract and awarded by the Louisiana State Mineral Board shall be without warranty of any kind, either express, implied, or statutory, including, but not limited to, the implied warranties of merchantability and fitness for a particular purpose. Should the mineral lease awarded by the Louisiana State Mineral Board be subsequently modified, cancelled or abrogated due to the existence of conflicting leases, operating agreements, private claims or other future obligations or conditions which may affect all or any portion of the leased Tract, it shall not relieve the Lessee of the obligation to pay any bonus due thereon to the Louisiana State Mineral Board, nor shall the Louisiana State Mineral Board be obligated to refund any consideration paid by the Lessor prior to such modification, cancellation, or abrogation, including, but not limited to, bonuses, rentals and royalties.

NOTE: The Office of Mineral Resources will require a minimum bonus of \$180 per acre and a minimum royalty of 21%.

NOTE: The Department of Wildlife and Fisheries has designated certain areas in the coastal waters of the State of Louisiana as Oyster Seed Bed Areas. The exact location of those Seed Bed Areas must be obtained from the Department of Wildlife and Fisheries and any work done under a mineral lease from the State of Louisiana may necessarily be conducted in conformity with the rules and regulations promulgated by the said Department of Wildlife and Fisheries for Oyster Seed Bed Areas.

NOTE: The State of Louisiana does hereby reserve, and this lease shall be subject to, the imprescriptible right of surface use in the nature of a servitude in favor of the Department of Natural Resources and/or the Department of Wildlife and Fisheries, including its Offices and

Commissions, for the sole purpose of implementing, constructing, servicing and maintaining approved coastal zone management and/or restoration projects. Utilization of any and all rights derived under this lease by the mineral lessee, its agents, successors or assigns, shall not interfere with nor hinder the reasonable surface use by the Department of Natural Resources and/or the Department of Wildlife and Fisheries, its Offices or Commissions, as herein above reserved.

Applicant: Varnado Minerals

Bidder	Cash Payment	Price / Acre	Rental	Oil	Gas	Other

82

TR 34749
1,449 ± ACS.
AUG., 2002

T13S-R15E
T14S-R16E

NAD 27 LAMBERT LA. SOUTH ZONE

St. Bernard Parish, Louisiana



TRACT 34750 - St. Bernard Parish, Louisiana

All of the lands now or formerly constituting the beds and bottoms of all water bodies of every nature and description, and all islands and other lands formed by accretion, where allowed by law, or by reliction, and excepting tax adjudicated lands, belonging to the State of Louisiana and not presently under mineral lease on August 14, 2002, situated in St. Bernard Parish, Louisiana, and more particularly described as follows: Beginning at a point having Coordinates of X = 2,532,158.09 and Y = 461,926.51; thence North 14,758.05 feet to a point having Coordinates of X = 2,532,158.09 and Y = 476,684.56; thence East 7,333.86 feet to a point having Coordinates of X = 2,539,491.95 and Y = 476,684.56; thence South 14,758.05 feet to a point having Coordinates of X = 2,539,491.95 and Y = 461,926.51; thence West 7,333.86 feet to the point of beginning, containing approximately **2,484.70 acres**, all as more particularly outlined in a plat on file in the Office of Mineral Resources, Department of Natural Resources, as provided by the applicant. All bearings, distances and coordinates are based on Louisiana Coordinate System of 1927, (North or South Zone) where applicable.

NOTE: The above description of the Tract nominated for lease has been provided and corrected, where required, exclusively by the nomination party. Any mineral lease selected from this Tract and awarded by the Louisiana State Mineral Board shall be without warranty of any kind, either express, implied, or statutory, including, but not limited to, the implied warranties of merchantability and fitness for a particular purpose. Should the mineral lease awarded by the Louisiana State Mineral Board be subsequently modified, cancelled or abrogated due to the existence of conflicting leases, operating agreements, private claims or other future obligations or conditions which may affect all or any portion of the leased Tract, it shall not relieve the Lessee of the obligation to pay any bonus due thereon to the Louisiana State Mineral Board, nor shall the Louisiana State Mineral Board be obligated to refund any consideration paid by the Lessor prior to such modification, cancellation, or abrogation, including, but not limited to, bonuses, rentals and royalties.

NOTE: The Office of Mineral Resources will require a minimum bonus of \$230 per acre and a minimum royalty of 23%.

NOTE: The Department of Wildlife and Fisheries has designated certain areas in the coastal waters of the State of Louisiana as Oyster Seed Bed Areas. The exact location of those Seed Bed Areas must be obtained from the Department of Wildlife and Fisheries and any work done under a mineral lease from the State of Louisiana may necessarily be conducted in conformity with the rules and regulations promulgated by the said Department of Wildlife and Fisheries for Oyster Seed Bed Areas.

NOTE: The State of Louisiana does hereby reserve, and this lease shall be subject to, the imprescriptible right of surface use in the nature of a servitude in favor of the Department of Natural Resources and/or the Department of Wildlife and Fisheries, including its Offices and

Commissions, for the sole purpose of implementing, constructing, servicing and maintaining approved coastal zone management and/or restoration projects. Utilization of any and all rights derived under this lease by the mineral lessee, its agents, successors or assigns, shall not interfere with nor hinder the reasonable surface use by the Department of Natural Resources and/or the Department of Wildlife and Fisheries, its Offices or Commissions, as herein above reserved.

Applicant: Varnado Minerals

Bidder	Cash Payment	Price / Acre	Rental	Oil	Gas	Other

LAKE
BORGNE

SL 17010

SL 17076

SL 17013

SL 17147

SL 17014

SL 17146

SL 17012

SL 17079

SL 17081

SL 17015

SL 17080

TR 34750
2,484.70 ± ACS.
AUG., 2002

P. O. B.
X=2,532,158.09
Y= 461,926.51

NAD 27
LAMBERT LA. SOUTH ZONE

Topography obtained from USC&GS Quadrangles
"POINTE AUX MARCHETTES, LA.", 1994 Edition,
"PROCTOR POINT, LA.", 1994 Edition.

St. Bernard Parish, Louisiana

3000' 0' 3000'

TRACT 34751 - St. Bernard Parish, Louisiana

All of the lands now or formerly constituting the beds and bottoms of all water bodies of every nature and description, and all islands and other lands formed by accretion, where allowed by law, or by reliction, and excepting tax adjudicated lands, belonging to the State of Louisiana and not presently under mineral lease on August 14, 2002, situated in St. Bernard Parish, Louisiana, and more particularly described as follows: Beginning at a point having Coordinates of X = 2,554,250.00 and Y = 484,063.58; thence West 6,727.77 feet to the Southeast corner of State Lease No. 17078 having Coordinates of X = 2,547,522.23 and Y = 484,063.58; thence North 3,156.27 feet along the East line of said State Lease No. 17078 to its Northeast corner having Coordinates of X = 2,547,522.23 and Y = 487,219.85; thence West 8,030.28 feet along the North line of said State Lease No. 17078 to its Northwest corner having Coordinates of X = 2,539,491.95 and Y = 487,219.85; thence North 4,222.75 feet to a point having Coordinates of X = 2,539,491.95 and Y = 491,442.60; thence East 14,758.05 feet to a point having Coordinates of X = 2,554,250.00 and Y = 491,442.60; thence South 7,379.02 feet to the point of beginning, **LESS AND EXCEPT**, if any, that portion of the Biloxi Wildlife Management Area that may lie within the above described tract, containing approximately **1,918.14 acres**, all as more particularly outlined in a plat on file in the Office of Mineral Resources, Department of Natural Resources, as provided by the applicant. All bearings, distances and coordinates are based on Louisiana Coordinate System of 1927, (North or South Zone) where applicable.

NOTE: The above description of the Tract nominated for lease has been provided and corrected, where required, exclusively by the nomination party. Any mineral lease selected from this Tract and awarded by the Louisiana State Mineral Board shall be without warranty of any kind, either express, implied, or statutory, including, but not limited to, the implied warranties of merchantability and fitness for a particular purpose. Should the mineral lease awarded by the Louisiana State Mineral Board be subsequently modified, cancelled or abrogated due to the existence of conflicting leases, operating agreements, private claims or other future obligations or conditions which may affect all or any portion of the leased Tract, it shall not relieve the Lessee of the obligation to pay any bonus due thereon to the Louisiana State Mineral Board, nor shall the Louisiana State Mineral Board be obligated to refund any consideration paid by the Lessor prior to such modification, cancellation, or abrogation, including, but not limited to, bonuses, rentals and royalties.

NOTE: This Tract may be located within a Wildlife Management Area, Refuge, Game Preserve or other area under the management and jurisdiction of the Department of Wildlife and Fisheries. As such, any specific rules and regulations promulgated by said Department for the respective Wildlife Management Area, Refuges, Game Preserves or similar areas may be applicable to lease operations on this Tract, as well as the following:

1. No activities will be allowed without written authorization from the Louisiana Department of Wildlife and Fisheries.

2. Projects will be evaluated on a case by case basis. Modifications to projects may be required including, but not limited to, access routes, spoil placement, well sites, flow lines and other appurtenant structures.
3. Mitigation will be required to offset avoidable wetland impacts.
4. Removal of all structures, facilities, and equipment will be required within 120 days of abandonment unless otherwise agreed to be the Department of Wildlife and Fisheries.
5. Prior to submitting applications for wetland permits to Federal and State permitting agencies the lease holder shall coordinate project details with the Louisiana Department of Wildlife and Fisheries, Fur and Refuge Division. Contact person for the Department will be Mike Windham at (504) 568-5886.

NOTE: The Office of Mineral Resources will require a minimum bonus of \$230 per acre and a minimum royalty of 23%.

NOTE: The Department of Wildlife and Fisheries has designated certain areas in the coastal waters of the State of Louisiana as Oyster Seed Bed Areas. The exact location of those Seed Bed Areas must be obtained from the Department of Wildlife and Fisheries and any work done under a mineral lease from the State of Louisiana may necessarily be conducted in conformity with the rules and regulations promulgated by the said Department of Wildlife and Fisheries for Oyster Seed Bed Areas.

NOTE: The State of Louisiana does hereby reserve, and this lease shall be subject to, the imprescriptible right of surface use in the nature of a servitude in favor of the Department of Natural Resources and/or the Department of Wildlife and Fisheries, including its Offices and Commissions, for the sole purpose of implementing, constructing, servicing and maintaining approved coastal zone management and/or restoration projects. Utilization of any and all rights derived under this lease by the mineral lessee, its agents, successors or assigns, shall not interfere with nor hinder the reasonable surface use by the Department of Natural Resources and/or the Department of Wildlife and Fisheries, its Offices or Commissions, as herein above reserved.

Applicant: Varnado Minerals

Bidder	Cash Payment	Price / Acre	Rental	Oil	Gas	Other

LAKE
BORGNE

TR 34751
1,918.14 ± ACS.
AUG., 2002

SL 17078

Pte aux Marchettes
P. O. B.
X=2,554,250.00
Y= 484,063.58

SL 17079

E

Topography obtained from USC&GS Quadrangles
"POINTE AUX MARCHETTES, LA.", 1994 Edition,
"FALSE MOUTH BAYOU, LA.", 1968 Edition, Photorevised 1976,
"PROCTOR POINT, LA.", 1994 Edition, "ALLIGATOR POINT, LA."
1994 Edition.

St. Bernard Parish, Louisiana

3000' 0' 3000'

TRACT 34752 - St. Bernard Parish, Louisiana

All of the lands now or formerly constituting the beds and bottoms of all water bodies of every nature and description, and all islands and other lands formed by accretion, where allowed by law, or by reliction, and excepting tax adjudicated lands, belonging to the State of Louisiana and not presently under mineral lease on August 14, 2002, situated in St. Bernard Parish, Louisiana, and more particularly described as follows: Beginning at a point having Coordinates of X = 2,554,250.00 and Y = 484,063.58; thence South 6,763.58 feet to the Northwest corner of State Lease No. 17086 having Coordinates of X = 2,554,250.00 and Y = 477,300.00; thence South 615.44 feet to a point along the West line of said State Lease No. 17086, also being the Northeast corner of State Lease No. 17083 having Coordinates of X = 2,554,250.00 and Y = 476,684.56; thence West 2,579.48 feet along the North line of said State Lease No. 17083 to its Northwest corner having Coordinates of X = 2,551,670.52 and Y = 476,684.56; thence West 4,799.54 feet to the Southeast corner of State Lease No. 17079 having Coordinates of X = 2,546,870.98 and Y = 476,684.56; thence along the boundary of said State Lease No. 17079 the following courses: North 2,131.67 feet, West 2,974.27 feet and North 5,247.35 feet to the Northeast corner of said State Lease No. 17079, also being a point on the South line of State Lease No. 17078 having Coordinates of X = 2,543,896.71 and Y = 484,063.58; thence East 3,625.52 feet along the South line of said State Lease No. 17078 to its Southeast corner having Coordinates of X = 2,547,522.23 and Y = 484,063.58; thence East 6,727.77 feet to the point of beginning, **LESS AND EXCEPT**, if any, that portion of the Biloxi Wildlife Management Area that may lie within the above described tract, containing approximately **1,608.29 acres**, all as more particularly outlined in a plat on file in the Office of Mineral Resources, Department of Natural Resources, as provided by the applicant. All bearings, distances and coordinates are based on Louisiana Coordinate System of 1927, (North or South Zone) where applicable.

NOTE: The above description of the Tract nominated for lease has been provided and corrected, where required, exclusively by the nomination party. Any mineral lease selected from this Tract and awarded by the Louisiana State Mineral Board shall be without warranty of any kind, either express, implied, or statutory, including, but not limited to, the implied warranties of merchantability and fitness for a particular purpose. Should the mineral lease awarded by the Louisiana State Mineral Board be subsequently modified, cancelled or abrogated due to the existence of conflicting leases, operating agreements, private claims or other future obligations or conditions which may affect all or any portion of the leased Tract, it shall not relieve the Lessee of the obligation to pay any bonus due thereon to the Louisiana State Mineral Board, nor shall the Louisiana State Mineral Board be obligated to refund any consideration paid by the Lessor prior to such modification, cancellation, or abrogation, including, but not limited to, bonuses, rentals and royalties.

NOTE: This Tract may be located within a Wildlife Management Area, Refuge, Game Preserve or other area under the management and jurisdiction of the

Department of Wildlife and Fisheries. As such, any specific rules and regulations promulgated by said Department for the respective Wildlife Management Area, Refuges, Game Preserves or similar areas may be applicable to lease operations on this Tract, as well as the following:

1. No activities will be allowed without written authorization from the Louisiana Department of Wildlife and Fisheries.
2. Projects will be evaluated on a case by case basis. Modifications to projects may be required including, but not limited to, access routes, spoil placement, well sites, flow lines and other appurtenant structures.
3. Mitigation will be required to offset avoidable wetland impacts.
4. Removal of all structures, facilities, and equipment will be required within 120 days of abandonment unless otherwise agreed to be the Department of Wildlife and Fisheries.
5. Prior to submitting applications for wetland permits to Federal and State permitting agencies the lease holder shall coordinate project details with the Louisiana Department of Wildlife and Fisheries, Fur and Refuge Division. Contact person for the Department will be Mike Windham at (504) 568-5886.

NOTE: The Office of Mineral Resources will require a minimum bonus of \$230 per acre and a minimum royalty of 23%.

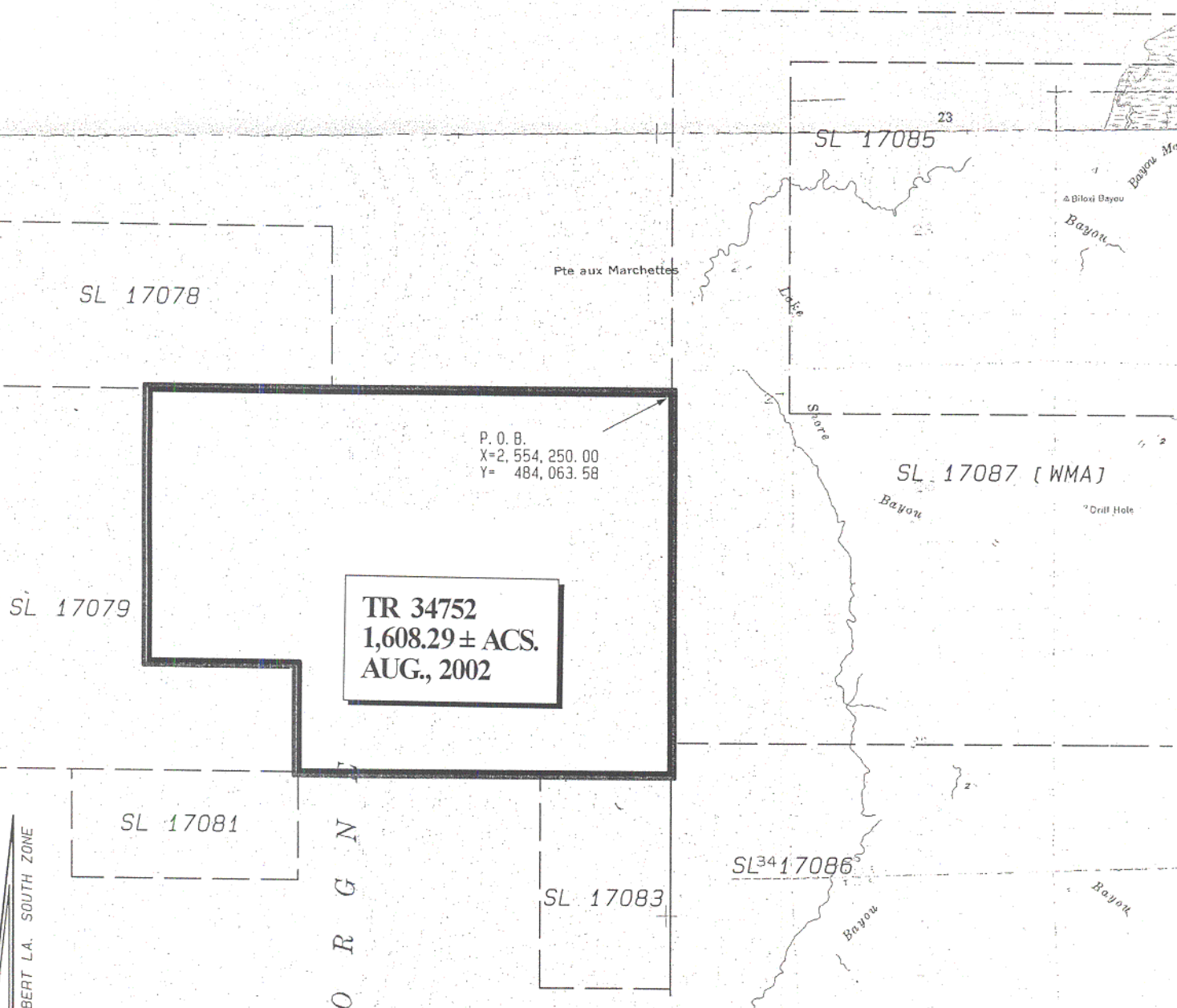
NOTE: The Department of Wildlife and Fisheries has designated certain areas in the coastal waters of the State of Louisiana as Oyster Seed Bed Areas. The exact location of those Seed Bed Areas must be obtained from the Department of Wildlife and Fisheries and any work done under a mineral lease from the State of Louisiana may necessarily be conducted in conformity with the rules and regulations promulgated by the said Department of Wildlife and Fisheries for Oyster Seed Bed Areas.

NOTE: The State of Louisiana does hereby reserve, and this lease shall be subject to, the imprescriptible right of surface use in the nature of a servitude in favor of the Department of Natural Resources and/or the Department of Wildlife and Fisheries, including its Offices and Commissions, for the sole purpose of implementing, constructing, servicing and maintaining approved coastal zone management and/or restoration projects. Utilization of any and all rights derived under this lease by the mineral lessee, its agents, successors or assigns, shall not interfere with nor hinder the reasonable surface use by the Department of Natural Resources and/or the Department of Wildlife and Fisheries, its Offices or Commissions, as herein above reserved.

Applicant: Varnado Minerals

Bidder	Cash Payment	Price / Acre	Rental	Oil	Gas	Other

LAKE BORGNE



NAD 27 - LAMBERT LA. SOUTH ZONE

Topography obtained from USC&GS Quadrangles
 "POINTE AUX MARCHETTES, LA.", 1994 Edition,
 "FALSE MOUTH BAYOU, LA.", 1968 Edition, Photorevised 1976,
 "PROCTOR POINT, LA.", 1994 Edition, "ALLIGATOR POINT, LA."
 1994 Edition.

St. Bernard Parish, Louisiana

3000' 0' 3000'

TRACT 34753 - St. Bernard Parish, Louisiana

All of the lands now or formerly constituting the beds and bottoms of all water bodies of every nature and description, and all islands and other lands formed by accretion, where allowed by law, or by reliction, and excepting tax adjudicated lands, belonging to the State of Louisiana and not presently under mineral lease on August 14, 2002, situated in St. Bernard Parish, Louisiana, and more particularly described as follows: Beginning at the Southeast corner of State Lease No. 17081 having Coordinates of X = 2,546,870.98 and Y = 474,569.90; thence South 3,544.93 feet to the Northwest corner of State Lease No. 17082 having Coordinates of X = 2,546,870.98 and Y = 471,024.97; thence South 2,269.26 feet to a point along the West line of said State Lease No. 17082, also being the Northeast corner of State Lease No. 17080 having Coordinates of X = 2,546,870.98 and Y = 468,755.71; thence West 2,640.00 feet along the North line of said State Lease No. 17080 to its Northwest corner having Coordinates of X = 2,544,230.98 and Y = 468,755.71; thence South 2,640.00 feet along the West line of said State Lease No. 17080 to its Southwest corner having Coordinates of X = 2,544,230.98 and Y = 466,115.71; thence East 2,640.00 feet along the South line of said State Lease No. 17080 to its Southeast corner, also being a point on the West line of said State Lease No. 17082 having Coordinates of X = 2,546,870.98 and Y = 466,115.71; thence South 457.06 feet along the West line of said State Lease No. 17082 to its Southwest corner having Coordinates of X = 2,546,870.98 and Y = 465,658.65; thence South 1,843.57 feet to the Northwest corner of State Lease No. 17084 having Coordinates of X = 2,546,870.98 and Y = 463,815.08; thence South 1,888.57 feet along the West line of said State Lease No. 17084 to its Southwest corner having Coordinates of X = 2,546,870.98 and Y = 461,926.51; thence West 7,379.03 feet to a point having Coordinates of X = 2,539,491.95 and Y = 461,926.51; thence North 14,758.05 feet to a point having Coordinates of X = 2,539,491.95 and Y = 476,684.56; thence East 1,352.05 feet to the Southwest corner of State Lease No. 17079 having Coordinates of X = 2,540,844.00 and Y = 476,684.56; thence East 1,561.61 feet to a point on the South line of said State Lease No. 17079, also being the Northwest corner of said State Lease No. 17081, having Coordinates of X = 2,542,405.61 and Y = 476,684.56; thence South 2,114.66 feet along the West line of said State Lease No. 17081 to its Southwest corner having Coordinates of X = 2,542,405.61 and Y = 474,569.90; thence East 4,465.37 feet along the South line of said State Lease No. 17081 to the point of beginning, containing approximately **2,123.23 acres**, all as more particularly outlined in a plat on file in the Office of Mineral Resources, Department of Natural Resources, as provided by the applicant. All bearings, distances and coordinates are based on Louisiana Coordinate System of 1927, (North or South Zone) where applicable.

NOTE: The above description of the Tract nominated for lease has been provided and corrected, where required, exclusively by the nomination party. Any mineral lease selected from this Tract and awarded by the Louisiana State Mineral Board shall be without warranty of any kind, either express, implied, or statutory, including, but not limited to, the implied warranties of merchantability and fitness for a particular

purpose. Should the mineral lease awarded by the Louisiana State Mineral Board be subsequently modified, cancelled or abrogated due to the existence of conflicting leases, operating agreements, private claims or other future obligations or conditions which may affect all or any portion of the leased Tract, it shall not relieve the Lessee of the obligation to pay any bonus due thereon to the Louisiana State Mineral Board, not shall the Louisiana State Mineral Board be obligated to refund any consideration paid by the Lessor prior to such modification, cancellation, or abrogation, including, but not limited to, bonuses, rentals and royalties.

NOTE: The Office of Mineral Resources will require a minimum bonus of \$230 per acre and a minimum royalty of 23%.

NOTE: The Department of Wildlife and Fisheries has designated certain areas in the coastal waters of the State of Louisiana as Oyster Seed Bed Areas. The exact location of those Seed Bed Areas must be obtained from the Department of Wildlife and Fisheries and any work done under a mineral lease from the State of Louisiana may necessarily be conducted in conformity with the rules and regulations promulgated by the said Department of Wildlife and Fisheries for Oyster Seed Bed Areas.

NOTE: The State of Louisiana does hereby reserve, and this lease shall be subject to, the imprescriptible right of surface use in the nature of a servitude in favor of the Department of Natural Resources and/or the Department of Wildlife and Fisheries, including its Offices and Commissions, for the sole purpose of implementing, constructing, servicing and maintaining approved coastal zone management and/or restoration projects. Utilization of any and all rights derived under this lease by the mineral lessee, its agents, successors or assigns, shall not interfere with nor hinder the reasonable surface use by the Department of Natural Resources and/or the Department of Wildlife and Fisheries, its Offices or Commissions, as herein above reserved.

Applicant: Varnado Minerals

Bidder	Cash Payment	Price / Acre	Rental	Oil	Gas	Other

LAKE
BORGNE

SL 17079

95

SL 17081

P. O. B.
X=2,546,870.98
Y= 474,569.90

SL 17083

B
O
R
G
N
E

SL 17082

SL 17015

SL 17080

TR 34753
2,123.23 ± ACS.
AUG., 2002

SL 17084

SL 17148

L
A
K
E

Topography obtained from USC&GS Quadrangles
"POINTE AUX MARCHETTES, LA.", 1994 Edition,
"PROCTOR POINT, LA.", 1994 Edition.

St. Bernard Parish, Louisiana

3000' 0' 3000'

TRACT 34754 - St. Bernard Parish, Louisiana

All of the lands now or formerly constituting the beds and bottoms of all water bodies of every nature and description, and all islands and other lands formed by accretion, where allowed by law, or by reliction, and excepting tax adjudicated lands, belonging to the State of Louisiana and not presently under mineral lease on August 14, 2002, situated in St. Bernard Parish, Louisiana, and more particularly described as follows: Beginning at a point having Coordinates of X = 2,546,870.98 and Y = 447,168.46; thence West 7,379.03 feet to a point having Coordinates of X = 2,539,491.95 and Y = 447,168.46; thence North 14,758.05 feet to a point having Coordinates of X = 2,539,491.95 and Y = 461,926.51; thence East 7,379.03 feet to the Northwest corner of State Lease No. 17148 having Coordinates of X = 2,546,870.98 and Y = 461,926.51; thence South 800.00 feet along the West line of said State Lease No. 17148 to its most Northerly Southwest corner having Coordinates of X = 2,546,870.98 and Y = 461,126.51; thence South 13,958.05 feet to the point of beginning, containing approximately **2,500.00 acres**, all as more particularly outlined in a plat on file in the Office of Mineral Resources, Department of Natural Resources, as provided by the applicant. All bearings, distances and coordinates are based on Louisiana Coordinate System of 1927, (North or South Zone) where applicable.

NOTE: The above description of the Tract nominated for lease has been provided and corrected, where required, exclusively by the nomination party. Any mineral lease selected from this Tract and awarded by the Louisiana State Mineral Board shall be without warranty of any kind, either express, implied, or statutory, including, but not limited to, the implied warranties of merchantability and fitness for a particular purpose. Should the mineral lease awarded by the Louisiana State Mineral Board be subsequently modified, cancelled or abrogated due to the existence of conflicting leases, operating agreements, private claims or other future obligations or conditions which may affect all or any portion of the leased Tract, it shall not relieve the Lessee of the obligation to pay any bonus due thereon to the Louisiana State Mineral Board, nor shall the Louisiana State Mineral Board be obligated to refund any consideration paid by the Lessor prior to such modification, cancellation, or abrogation, including, but not limited to, bonuses, rentals and royalties.

NOTE: The Office of Mineral Resources will require a minimum bonus of \$230 per acre and a minimum royalty of 23%.

NOTE: The Department of Wildlife and Fisheries has designated certain areas in the coastal waters of the State of Louisiana as Oyster Seed Bed Areas. The exact location of those Seed Bed Areas must be obtained from the Department of Wildlife and Fisheries and any work done under a mineral lease from the State of Louisiana may necessarily be conducted in conformity with the rules and regulations promulgated by the said Department of Wildlife and Fisheries for Oyster Seed Bed Areas.

NOTE: The State of Louisiana does hereby reserve, and this lease shall be subject to, the imprescriptible right of surface use in the nature of a servitude in favor of the Department of Natural Resources and/or the Department of Wildlife and Fisheries, including its Offices and Commissions, for the sole purpose of implementing, constructing, servicing and maintaining approved coastal zone management and/or restoration projects. Utilization of any and all rights derived under this lease by the mineral lessee, its agents, successors or assigns, shall not interfere with nor hinder the reasonable surface use by the Department of Natural Resources and/or the Department of Wildlife and Fisheries, its Offices or Commissions, as herein above reserved.

Applicant: Varnado Minerals

Bidder	Cash Payment	Price / Acre	Rental	Oil	Gas	Other

E

LAKE
BORGNE

SL 17015

SL 17082

SL 17080

98

SL 17088 (WMA)

SL 17084

SL 17148

TR 34754
2,500.00 ± ACS.
AUG., 2002

P. O. B.
X=2,546,870.98
Y= 447,168.46

Light

Bayou

St. Malo

34

32

32

LAKE BORGNE

Topography obtained from USC&GS Quadrangles
"LENA LAGOON, LA.", 1993 Edition & YSCLOSKEY,
LA.", 1967 Edition, Revised 1994.
"POINTE AUX MARCHETTES, LA.", 1994 Edition,
"PROCTOR POINT, LA.", 1994 Edition.

St. Bernard Parish, Louisiana

3000' 0' 3000'

NAD 27 LAMBERT LA. SOUTH ZONE

TRACT 34755 - St. Bernard Parish, Louisiana

All of the lands now or formerly constituting the beds and bottoms of all water bodies of every nature and description, and all islands and other lands formed by accretion, where allowed by law, or by reliction, and excepting tax adjudicated lands, belonging to the State of Louisiana and not presently under mineral lease on August 14, 2002, situated in St. Bernard Parish, Louisiana, and more particularly described as follows: Beginning at a point having Coordinates of X = 2,539,491.95 and Y = 447,168.46; thence East 12,808.05 feet to a point having Coordinates of X = 2,552,300.00 and Y = 447,168.46; thence South 36 degrees 05 minutes 58 seconds West 3,055.04 feet to a point having Coordinates of X = 2,550,500.00 and Y = 444,700.00; thence South 53 degrees 23 minutes 35 seconds West 4,360.05 feet to a point having Coordinates of X = 2,547,000.00 and Y = 442,100.00; thence South 61 degrees 21 minutes 43 seconds West 8,554.58 feet to a point having Coordinates of X = 2,539,491.95 and Y = 438,000.00; thence North 9,168.46 feet to the point of beginning, containing approximately **1,422 acres**, all as more particularly outlined in a plat on file in the Office of Mineral Resources, Department of Natural Resources, as provided by the applicant. All bearings, distances and coordinates are based on Louisiana Coordinate System of 1927, (North or South Zone) where applicable.

NOTE: The above description of the Tract nominated for lease has been provided and corrected, where required, exclusively by the nomination party. Any mineral lease selected from this Tract and awarded by the Louisiana State Mineral Board shall be without warranty of any kind, either express, implied, or statutory, including, but not limited to, the implied warranties of merchantability and fitness for a particular purpose. Should the mineral lease awarded by the Louisiana State Mineral Board be subsequently modified, cancelled or abrogated due to the existence of conflicting leases, operating agreements, private claims or other future obligations or conditions which may affect all or any portion of the leased Tract, it shall not relieve the Lessee of the obligation to pay any bonus due thereon to the Louisiana State Mineral Board, nor shall the Louisiana State Mineral Board be obligated to refund any consideration paid by the Lessor prior to such modification, cancellation, or abrogation, including, but not limited to, bonuses, rentals and royalties.

NOTE: The Office of Mineral Resources will require a minimum bonus of \$180 per acre and a minimum royalty of 21%.

NOTE: The Department of Wildlife and Fisheries has designated certain areas in the coastal waters of the State of Louisiana as Oyster Seed Bed Areas. The exact location of those Seed Bed Areas must be obtained from the Department of Wildlife and Fisheries and any work done under a mineral lease from the State of Louisiana may necessarily be conducted in conformity with the rules and regulations promulgated by the said Department of Wildlife and Fisheries for Oyster Seed Bed Areas.

NOTE: The State of Louisiana does hereby reserve, and this lease shall be subject to, the imprescriptible right of surface use in the nature of a servitude in favor of the Department of Natural Resources and/or the Department of Wildlife and Fisheries, including its Offices and Commissions, for the sole purpose of implementing, constructing, servicing and maintaining approved coastal zone management and/or restoration projects. Utilization of any and all rights derived under this lease by the mineral lessee, its agents, successors or assigns, shall not interfere with nor hinder the reasonable surface use by the Department of Natural Resources and/or the Department of Wildlife and Fisheries, its Offices or Commissions, as herein above reserved.

Applicant: Varnado Minerals

Bidder	Cash Payment	Price / Acre	Rental	Oil	Gas	Other

LAKE BORGNE

P. O. B.
X=2, 539, 491. 95
Y= 447, 168. 46

TR 34755
1,422 ± ACS.
AUG., 2002

T13S-R16E

T14S-R16E

B O R G N E

LAKE BORGNE

LENA LAGOON

OUTLET CANAL

Topography obtained from USC&GS Quadrangles
"LENA LAGOON, LA.", 1993 Edition & YSCLOSKEY,
LA.", 1967 Edition, Revised 1994.
"POINTE AUX MARCHETTES, LA.", 1994 Edition,
"PROCTOR POINT, LA.", 1994 Edition.

St. Bernard Parish, Louisiana

3000' 0' 3000'

NAD 27 - LAMBERT LA. SOUTH ZONE