

PASS-A-LOUTRE

TRACTS

TRACT 33731 - Plaquemines Parish, Louisiana

All state owned lands and water bottoms not under mineral lease on August 8, 2001, within the confines of the Pass-A-Loutre Wildlife Management Area as defined by the Department of Wildlife & Fisheries and included in a title opinion from the Office of the Governor, dated August 3, 1998, situated in Plaquemines Parish, Louisiana, within the following boundaries: Beginning at the Northeast corner of State Lease No. 17055, also being a point on the East line of Block 12, South Pass Area, having Coordinates of X = 2,674,960.00 and Y = 142,850.00; thence West 3,566.95 feet along the North line of said State Lease No. 17055 to a point on the Northeastern boundary of State Lease No. 999, as amended, having Coordinates of X = 2,671,393.05 and Y = 142,850.00; thence North 46 degrees 35 minutes 38 seconds West 5,247.13 feet along the Northeastern boundary of said State Lease No. 999, as amended, to a point having Coordinates of X = 2,667,581.00 and Y = 146,455.64; thence North 2,105.36 feet to a point having Coordinates of X = 2,667,581.00 and Y = 148,561.00; thence East 7,379.00 feet to a point on the East line of Block 12 having Coordinates of X = 2,674,960.00 and Y = 148,561.00; thence South along East line of said Block 12 5,711.00 feet to the point of beginning, **LESS AND EXCEPT** any privately owned land that may be located within the above described tract, containing approximately **809.67 acres**, as shown outlined in red on a plat on file in the Office of Mineral Resources, Department of Natural Resources, as provided by the applicant. All bearings, distances and coordinates are based on Louisiana Coordinate System of 1927 (South Zone).

NOTE: The above description of the tract nominated for lease has been provided exclusively by the party nominating the tract for lease. The Louisiana State Mineral Board makes no representation as to the accuracy of the description of the nominated tract or its suitability for lease. The Louisiana State Mineral Board has made no inspection of the nominated tract for the existence of conflicting leases, operating agreements, private claims or other existing or future obligations or conditions which may affect all or any portion of the nominated tract or its suitability for lease.

Maps depicting the nominated tract, containing the bearings, distances and coordinates of the nominated tract based on the Louisiana Coordinate System of 1927, North or South Zone, as applicable, are available for public inspection and review at the offices of the Louisiana State Mineral Board from 10:00 a.m. to 3:00 p.m. Monday - Friday.

In the event of conflict between the description of the nominated tract set forth above and the description of the nominated property as contained on the maps maintained at the offices of the Louisiana State Mineral Board, the Louisiana State Mineral Board maps shall prevail and shall provide the final property description of the lease to be awarded of the nominated tract.

Any mineral lease of the nominated tract by the Louisiana State Mineral Board shall be without warranty of any kind, either express, implied, or statutory, including, but not limited to, the implied warranties or merchantability and fitness for a particular purpose. Should the mineral lease of the nominated tract awarded by the Louisiana State Mineral Board be subsequently modified, cancelled or abrogated due to the existence of conflicting leases, operating agreements, private claims or other existing of future obligations

or conditions which may affect all or any portion of the leased tract, it shall not relieve the Lessee of the obligation to pay any bonus due thereon to the Louisiana State Mineral Board, nor shall the Louisiana State Mineral Board be obligated to refund any consideration paid by the Lessee prior to such modification, cancellation, or abrogation, including, but not limited to, bonuses, rents and royalties.

NOTE: The above tract is located in or near an oyster restricted area and all operations in such area must be conducted in strict conformity with the stipulations and/or regulations of the Louisiana Department of Wildlife and Fisheries.

NOTE: This tract may be located within the Pass-A-Loutre Wildlife Management. Any operations on said tract shall be coordinated with the Louisiana Department of Wildlife and Fisheries. Special Rules and Regulations have been promulgated by the Louisiana Department of Wildlife and Fisheries for the protection of the game and wildlife for some management areas. Any lease awarded by the Board on said tract shall be subject to any applicable Rules and Regulations of said management area. Copies of these Rules and Regulations may be obtained from the Louisiana Department of Wildlife and Fisheries through the Assistant Secretary, Office of Wildlife, upon request.

NOTE: 1. No activities will be allowed without written authorization of the Louisiana Department of Wildlife and Fisheries. All projects will be coordinated and approved by the Pass-A-Loutre Wildlife Management Area Supervisor prior to any activities on the wildlife management area.

2. Proposed projects will be evaluated on a case by case basis. Modifications to proposed project features including but not limited to access routes, well sites, flowlines and appurtenant structures may be required by the Louisiana Department of Wildlife and Fisheries.

3. Compliance with the Pass-A-Loutre Wildlife Management Area regulations will be required unless otherwise specified by the Louisiana Department of Wildlife and Fisheries.

4. Compensatory mitigation will be required to offset unavoidable habitat impacts.

5. Removal of all structures, facilities and equipment will be required within 120 days of abandonment unless otherwise agreed to by the Louisiana Department of Wildlife and Fisheries.

6. No activities will be allowed during the hunting season unless approved by the Louisiana Department of Wildlife and Fisheries.

7. Prior to submitting applications for wetland permits to Federal and State permitting agencies, the leaseholder shall coordinate project details with the Louisiana Department of Wildlife and

Fisheries.

NOTE: The Louisiana Department of Wildlife and Fisheries will require a minimum bonus of \$350.00 per acre and a minimum royalty of 25%.

NOTE: The State of Louisiana does hereby reserve, and this lease shall be subject to, the imprescriptible right of surface use in the nature of a servitude in favor of the Department of Natural Resources, including its Offices and Commissions, for the sole purpose of implementing, constructing, servicing and maintaining approved coastal zone management and/or restoration projects. Utilization of any and all rights derived under this lease by the mineral lessee, its agents, successors or assigns, shall not interfere with nor hinder the reasonable surface use by the Department of Natural Resources, its Offices or Commissions, as hereinabove reserved.

Applicant: Rodan Energy Corporation

Bidder	Cash Payment	Price / Acre	Rental	Oil	Gas	Other

SOUTH PASS AREA

Blk. 12

TR 33731
 809.67 +/- ACS.
 AUG. 2001

MAD 1927 (South Zone)

Blk. 13

S. L. 999

S.L. 17055-

P.O.B.

X = 2,674,960.00
 Y = 142,850.00

Blk. 23

Blk. 22

**PLAT TO BE ATTACHED
 TO LEASE PROPOSAL**

TRACT 33732 - Plaquemines Parish, Louisiana

All state owned lands and water bottoms not under mineral lease on August 8, 2001, within the confines of the Pass-A-Loutre Wildlife Management Area as defined by the Department of Wildlife & Fisheries and included in a title opinion from the Office of the Governor, dated August 3, 1998, situated in Plaquemines Parish, Louisiana, within the following boundaries: Beginning at the Northeast corner of Block 23, South Pass Area having Coordinates of X = 2,674,960.00 and Y = 141,182.00; thence South 3,370.00 feet along the East line of said Block 23 to the Easternmost corner of State Lease No. 1007, as amended; thence along the boundary of said State Lease No. 1007 the following courses: West 4,930.00 feet and North 3,370.00 feet to a point on the North line of said Block 23 having Coordinates of X = 2,670,030.00 and Y = 141,182.00; thence East 4,930.00 feet along said North line of Block 23 to the point of beginning, **LESS AND EXCEPT** any privately owned land that may be located within the above described tract, containing approximately **381.41 acres**, as shown outlined in red on a plat on file in the Office of Mineral Resources, Department of Natural Resources, as provided by the applicant. All bearings, distances and coordinates are based on Louisiana Coordinate System of 1927 (South Zone).

NOTE: The above description of the tract nominated for lease has been provided exclusively by the party nominating the tract for lease. The Louisiana State Mineral Board makes no representation as to the accuracy of the description of the nominated tract or its suitability for lease. The Louisiana State Mineral Board has made no inspection of the nominated tract for the existence of conflicting leases, operating agreements, private claims or other existing or future obligations or conditions which may affect all or any portion of the nominated tract or its suitability for lease.

Maps depicting the nominated tract, containing the bearings, distances and coordinates of the nominated tract based on the Louisiana Coordinate System of 1927, North or South Zone, as applicable, are available for public inspection and review at the offices of the Louisiana State Mineral Board from 10:00 a.m. to 3:00 p.m. Monday - Friday.

In the event of conflict between the description of the nominated tract set forth above and the description of the nominated property as contained on the maps maintained at the offices of the Louisiana State Mineral Board, the Louisiana State Mineral Board maps shall prevail and shall provide the final property description of the lease to be awarded of the nominated tract.

Any mineral lease of the nominated tract by the Louisiana State Mineral Board shall be without warranty of any kind, either express, implied, or statutory, including, but not limited to, the implied warranties or merchantability and fitness for a particular purpose. Should the mineral lease of the nominated tract awarded by the Louisiana State Mineral Board be subsequently modified, cancelled or abrogated due to the existence of conflicting leases, operating agreements, private claims or other existing of future obligations or conditions which may affect all or any portion of the leased tract, it shall not relieve the Lessee of the obligation to pay any bonus due thereon to the Louisiana State Mineral Board, nor shall the Louisiana State Mineral Board be obligated to refund any

consideration paid by the Lessee prior to such modification, cancellation, or abrogation, including, but not limited to, bonuses, rents and royalties.

NOTE: The above tract is located in or near an oyster restricted area and all operations in such area must be conducted in strict conformity with the stipulations and/or regulations of the Louisiana Department of Wildlife and Fisheries.

NOTE: This tract may be located within the Pass-A-Loutre Wildlife Management Area. Any operations on said tract shall be coordinated with the Louisiana Department of Wildlife and Fisheries. Special Rules and Regulations have been promulgated by the Louisiana Department of Wildlife and Fisheries for the protection of the game and wildlife for some management areas. Any lease awarded by the Board on said tract shall be subject to any applicable Rules and Regulations of said management area. Copies of these Rules and Regulations may be obtained from the Louisiana Department of Wildlife and Fisheries through the Assistant Secretary, Office of Wildlife, upon request.

NOTE: 1. No activities will be allowed without written authorization of the Louisiana Department of Wildlife and Fisheries. All projects will be coordinated and approved by the Pass-A-Loutre Wildlife Management Area Supervisor prior to any activities on the wildlife management area.

2. Proposed projects will be evaluated on a case by case basis. Modifications to proposed project features including but not limited to access routes, well sites, flowlines and appurtenant structures may be required by the Louisiana Department of Wildlife and Fisheries.

3. Compliance with the Pass-A-Loutre Wildlife Management Area regulations will be required unless otherwise specified by the Louisiana Department of Wildlife and Fisheries.

4. Compensatory mitigation will be required to offset unavoidable habitat impacts.

5. Removal of all structures, facilities and equipment will be required within 120 days of abandonment unless otherwise agreed to by the Louisiana Department of Wildlife and Fisheries.

6. No activities will be allowed during the hunting season unless approved by the Louisiana Department of Wildlife and Fisheries.

7. Prior to submitting applications for wetland permits to Federal and State permitting agencies, the leaseholder shall coordinate project details with the Louisiana Department of Wildlife and Fisheries.

NOTE: The Louisiana Department of Wildlife and Fisheries will require a

minimum bonus of \$350.00 per acre and a minimum royalty of 25%.

NOTE: The State of Louisiana does hereby reserve, and this lease shall be subject to, the imprescriptible right of surface use in the nature of a servitude in favor of the Department of Natural Resources, including its Offices and Commissions, for the sole purpose of implementing, constructing, servicing and maintaining approved coastal zone management and/or restoration projects. Utilization of any and all rights derived under this lease by the mineral lessee, its agents, successors or assigns, shall not interfere with nor hinder the reasonable surface use by the Department of Natural Resources, its Offices or Commissions, as hereinabove reserved.

Applicant: Rodan Energy Corporation

Bidder	Cash Payment	Price / Acre	Rental	Oil	Gas	Other

SOUTH PASS AREA

Bik. 12

Bik. 43

S. L. 999

S.L. 17055

MAD 1927 (South Zone)

TR 33732
381.41 +/- ACS.
AUG. 2001

P.O.B.
X = 2,674,960.00
Y = 141,182.00

Bik. 23
S. L. 1007

Bik. 22

PLAT TO BE ATTACHED
TO LEASE PROPOSAL

TRACT 33733 - Plaquemines Parish, Louisiana

All state owned lands and water bottoms not under mineral lease on August 8, 2001, within the confines of the Pass-A-Loutre Wildlife Management Area as defined by the Department of Wildlife & Fisheries and included in a title opinion from the Office of the Governor, dated August 3, 1998, situated in Plaquemines Parish, Louisiana, within the following boundaries: Beginning at the Southwest corner of Block 13, South Pass Area, having Coordinates of X = 2,674,960.00 and Y = 136,424.00; thence North 10,333.39 feet along the West line of said Block 13 to a point having Coordinates of X = 2,674,960.00 and Y = 146,757.39; thence East 2,500.00 feet to a point having Coordinates of X = 2,677,460.00 and Y = 146,757.39; thence South 28 degrees 36 minutes 38 seconds East 6,264.98 feet to a point having Coordinates of X = 2,680,460.00 and Y = 141,257.39; thence South 4,833.39 feet to a point having Coordinates of X = 2,680,460.00 and Y = 136,424.00; thence West 5,500.00 feet to the point of beginning, **LESS AND EXCEPT** any privately owned land that may be located within the above described tract, containing approximately **1,115.33 acres**, as shown outlined in red on a plat on file in the Office of Mineral Resources, Department of Natural Resources, as provided by the applicant. All bearings, distances and coordinates are based on Louisiana Coordinate System of 1927 (South Zone).

NOTE: The above description of the tract nominated for lease has been provided exclusively by the party nominating the tract for lease. The Louisiana State Mineral Board makes no representation as to the accuracy of the description of the nominated tract or its suitability for lease. The Louisiana State Mineral Board has made no inspection of the nominated tract for the existence of conflicting leases, operating agreements, private claims or other existing or future obligations or conditions which may affect all or any portion of the nominated tract or its suitability for lease.

Maps depicting the nominated tract, containing the bearings, distances and coordinates of the nominated tract based on the Louisiana Coordinate System of 1927, North or South Zone, as applicable, are available for public inspection and review at the offices of the Louisiana State Mineral Board from 10:00 a.m. to 3:00 p.m. Monday - Friday.

In the event of conflict between the description of the nominated tract set forth above and the description of the nominated property as contained on the maps maintained at the offices of the Louisiana State Mineral Board, the Louisiana State Mineral Board maps shall prevail and shall provide the final property description of the lease to be awarded of the nominated tract.

Any mineral lease of the nominated tract by the Louisiana State Mineral Board shall be without warranty of any kind, either express, implied, or statutory, including, but not limited to, the implied warranties or merchantability and fitness for a particular purpose. Should the mineral lease of the nominated tract awarded by the Louisiana State Mineral Board be subsequently modified, cancelled or abrogated due to the existence of conflicting leases, operating agreements, private claims or other existing of future obligations or conditions which may affect all or any portion of the leased tract, it shall not relieve the Lessee of the obligation to pay any bonus due thereon to the Louisiana State Mineral Board, nor shall the

Louisiana State Mineral Board be obligated to refund any consideration paid by the Lessee prior to such modification, cancellation, or abrogation, including, but not limited to, bonuses, rents and royalties.

NOTE: This tract may be located within the Pass-A-Loutre Wildlife Management. Any operations on said tract shall be coordinated with the Louisiana Department of Wildlife and Fisheries. Special Rules and Regulations have been promulgated by the Louisiana Department of Wildlife and Fisheries for the protection of the game and wildlife for some management areas. Any lease awarded by the Board on said tract shall be subject to any applicable Rules and Regulations of said management area. Copies of these Rules and Regulations may be obtained from the Louisiana Department of Wildlife and Fisheries through the Assistant Secretary, Office of Wildlife, upon request.

NOTE: 1. No activities will be allowed without written authorization of the Louisiana Department of Wildlife and Fisheries. All projects will be coordinated and approved by the Pass-A-Loutre Wildlife Management Area Supervisor prior to any activities on the wildlife management area.

2. Proposed projects will be evaluated on a case by case basis. Modifications to proposed project features including but not limited to access routes, well sites, flowlines and appurtenant structures may be required by the Louisiana Department of Wildlife and Fisheries.

3. Compliance with the Pass-A-Loutre Wildlife Management Area regulations will be required unless otherwise specified by the Department of Wildlife and Fisheries.

4. Compensatory mitigation will be required to offset unavoidable habitat impacts.

5. Removal of all structures, facilities and equipment will be required within 120 days of abandonment unless otherwise agreed to by the Department of Wildlife and Fisheries.

6. No activities will be allowed during the hunting season unless approved by the Department of Wildlife and Fisheries.

7. Prior to submitting applications for wetland permits to Federal and State permitting agencies, the leaseholder shall coordinate project details with the Department of Wildlife and Fisheries.

NOTE: The Department will require a minimum bonus of \$350.00 per acre and a minimum royalty of 25%.

NOTE: The State of Louisiana does hereby reserve, and this lease shall be subject to, the imprescriptible right of surface use in the nature of a servitude in favor of the Department of Natural Resources, including its Offices and Commissions, for the sole purpose of

implementing, constructing, servicing and maintaining approved coastal zone management and/or restoration projects. Utilization of any and all rights derived under this lease by the mineral lessee, its agents, successors or assigns, shall not interfere with nor hinder the reasonable surface use by the Department of Natural Resources, its Offices or Commissions, as hereinabove reserved.

Applicant: Cypress Energy Corporation

Bidder	Cash Payment	Price / Acre	Rental	Oil	Gas	Other

Plaquemines Parish, LA

PASS-A-LOUTRE

WHALE BAY

light

E
A
S
T

TR 33733
1,115.33 +/- ACS.
AUG. 2001

BLOCK 13

POB SOUTH PASS AREA
X = 2,674,960.00
Y = 136,424.00

B
A
Y

INDEFINITE

BOUNDARY

OIL FIELD

TRACT 33734 - Plaquemines Parish, Louisiana

All state owned lands and water bottoms not under mineral lease on August 8, 2001, within the confines of the Pass-A-Loutre Wildlife Management Area as defined by the Department of Wildlife & Fisheries and included in a title opinion from the Office of the Governor, dated August 3, 1998, situated in Plaquemines Parish, Louisiana, within the following boundaries: Beginning at a point on the West line of Block 22, South Pass Area, having Coordinates of X = 2,674,960.00 and Y = 133,323.57; thence East 8,273.13 feet to a point having Coordinates of X = 2,683,233.13 and Y = 133,323.57; thence South 6,899.57 feet to a point on the South line of said Block 22 having Coordinates of X = 2,683,233.13 and Y = 126,424.00; thence North 50 degrees 10 minutes 22 seconds West 10,772.59 feet to the point of beginning, **LESS AND EXCEPT** any privately owned land that may be located within the above described tract, containing approximately **655.20 acres**, as shown outlined in red on a plat on file in the Office of Mineral Resources, Department of Natural Resources, as provided by the applicant. All bearings, distances and coordinates are based on Louisiana Coordinate System of 1927 (South Zone).

NOTE: The above description of the tract nominated for lease has been provided exclusively by the party nominating the tract for lease. The Louisiana State Mineral Board makes no representation as to the accuracy of the description of the nominated tract or its suitability for lease. The Louisiana State Mineral Board has made no inspection of the nominated tract for the existence of conflicting leases, operating agreements, private claims or other existing or future obligations or conditions which may affect all or any portion of the nominated tract or its suitability for lease.

Maps depicting the nominated tract, containing the bearings, distances and coordinates of the nominated tract based on the Louisiana Coordinate System of 1927, North or South Zone, as applicable, are available for public inspection and review at the offices of the Louisiana State Mineral Board from 10:00 a.m. to 3:00 p.m. Monday - Friday.

In the event of conflict between the description of the nominated tract set forth above and the description of the nominated property as contained on the maps maintained at the offices of the Louisiana State Mineral Board, the Louisiana State Mineral Board maps shall prevail and shall provide the final property description of the lease to be awarded of the nominated tract.

Any mineral lease of the nominated tract by the Louisiana State Mineral Board shall be without warranty of any kind, either express, implied, or statutory, including, but not limited to, the implied warranties or merchantability and fitness for a particular purpose. Should the mineral lease of the nominated tract awarded by the Louisiana State Mineral Board be subsequently modified, cancelled or abrogated due to the existence of conflicting leases, operating agreements, private claims or other existing or future obligations or conditions which may affect all or any portion of the leased tract, it shall not relieve the Lessee of the obligation to pay any bonus due thereon to the Louisiana State Mineral Board, nor shall the Louisiana State Mineral Board be obligated to refund any consideration paid by the Lessee prior to such modification, cancellation, or abrogation, including, but not limited to, bonuses,

rents and royalties.

NOTE: This tract may be located within the Pass-A-Loutre Wildlife Management. Any operations on said tract shall be coordinated with the Louisiana Department of Wildlife and Fisheries. Special Rules and Regulations have been promulgated by the Louisiana Department of Wildlife and Fisheries for the protection of the game and wildlife for some management areas. Any lease awarded by the Board on said tract shall be subject to any applicable Rules and Regulations of said management area. Copies of these Rules and Regulations may be obtained from the Louisiana Department of Wildlife and Fisheries through the Assistant Secretary, Office of Wildlife, upon request.

NOTE: 1. No activities will be allowed without written authorization of the Louisiana Department of Wildlife and Fisheries. All projects will be coordinated and approved by the Pass-A-Loutre Wildlife Management Area Supervisor prior to any activities on the wildlife management area.

2. Proposed projects will be evaluated on a case by case basis. Modifications to proposed project features including but not limited to access routes, well sites, flowlines and appurtenant structures may be required by the Louisiana Department of Wildlife and Fisheries.

3. Compliance with the Pass-A-Loutre Wildlife Management Area regulations will be required unless otherwise specified by the Department of Wildlife and Fisheries.

4. Compensatory mitigation will be required to offset unavoidable habitat impacts.

5. Removal of all structures, facilities and equipment will be required within 120 days of abandonment unless otherwise agreed to by the Department of Wildlife and Fisheries.

6. No activities will be allowed during the hunting season unless approved by the Department of Wildlife and Fisheries.

7. Prior to submitting applications for wetland permits to Federal and State permitting agencies, the leaseholder shall coordinate project details with the Department of Wildlife and Fisheries.

NOTE: The Department will require a minimum bonus of \$350.00 per acre and a minimum royalty of 25%.

NOTE: The State of Louisiana does hereby reserve, and this lease shall be subject to, the imprescriptible right of surface use in the nature of a servitude in favor of the Department of Natural Resources, including its Offices and Commissions, for the sole purpose of implementing, constructing, servicing and maintaining approved coastal zone management and/or restoration projects. Utilization of any and all rights derived under this lease by the mineral lessee,

its agents, successors or assigns, shall not interfere with nor hinder the reasonable surface use by the Department of Natural Resources, its Offices or Commissions, as hereinabove reserved.

Applicant: Harold J. Anderson, Inc.

Bidder	Cash Payment	Price / Acre	Rental	Oil	Gas	Other

PASS A LOUTRE WILDLIFE MANAGEMENT AREA

P. O. B.
X=2,674,960.00
Y= 133,323.57

Blk. 22

TR 33734
655.20 +/- ACS.
AUG. 2001

Blk. 23

SL 1007

SL 1012

Blk. 28

Blk. 29

SOUTH PASS AREA

GULF OF MEXICO



Plaquemines Parish, Louisiana

REVISED:



Scale in Feet

TRACT 33735 - Plaquemines Parish, Louisiana

All state owned lands and water bottoms not under mineral lease on August 8, 2001, within the confines of the Pass-A-Loutre Wildlife Management Area as defined by the Department of Wildlife & Fisheries and included in a title opinion from the Office of the Governor, dated August 3, 1998, situated in Plaquemines Parish, Louisiana, within the following boundaries: Beginning at the most Southerly Southwest corner of State Lease No. 2090 having Coordinates of X = 2,719,650.00 and Y = 161,111.17; thence West 11,450.00 feet to a point having Coordinates of X = 2,708,200.00 and Y = 161,111.17; thence North 11,088.83 feet to a point having Coordinates of X = 2,708,200.00 and Y = 172,200.00; thence West approximately 1,653 feet to a point on the Western boundary of State Lease No. 4901, as amended, having a Coordinate of Y = 172,200.00; thence Southeasterly along the Western boundary of said State Lease No. 4901 to the point of intersection with a North-South line having a Coordinate of X = 2,710,598.72; thence South approximately 3,111 feet to a point having Coordinates of X = 2,710,598.72 and Y = 168,244.20; thence East 6,500.00 feet to a point having Coordinates of X = 2,717,098.72 and Y = 168,244.20; thence South 1,694.20 feet to a point having Coordinates of X = 2,717,098.72 and Y = 166,550.00; thence East 2,551.28 feet to a point on the Western boundary of said State Lease No. 2090 having Coordinates of X = 2,719,650.00 and Y = 166,550.00; thence along the boundary of said State Lease No. 2090 the following courses: Southerly, Westerly, Southerly, Northeasterly, Easterly and Southerly to the point of beginning, **LESS AND EXCEPT** those portions of State Lease No. 9646, as amended, and State Lease No. 11107, as amended, that lie entirely within the above described tract, and **LESS AND EXCEPT** any privately owned land that may be located within the above described tract, containing approximately 1,631 acres, as shown outlined in red on a plat on file in the Office of Mineral Resources, Department of Natural Resources, as provided by the applicant. All bearings, distances and coordinates are based on Louisiana Coordinate System of 1927 (South Zone).

NOTE: The above description of the tract nominated for lease has been provided exclusively by the party nominating the tract for lease. The Louisiana State Mineral Board makes no representation as to the accuracy of the description of the nominated tract or its suitability for lease. The Louisiana State Mineral Board has made no inspection of the nominated tract for the existence of conflicting leases, operating agreements, private claims or other existing or future obligations or conditions which may affect all or any portion of the nominated tract or its suitability for lease.

Maps depicting the nominated tract, containing the bearings, distances and coordinates of the nominated tract based on the Louisiana Coordinate System of 1927, North or South Zone, as applicable, are available for public inspection and review at the offices of the Louisiana State Mineral Board from 10:00 a.m. to 3:00 p.m. Monday - Friday.

In the event of conflict between the description of the nominated tract set forth above and the description of the nominated property as contained on the maps maintained at the offices of the Louisiana State Mineral Board, the Louisiana State Mineral Board maps shall prevail and shall provide the final property description of the lease

to be awarded of the nominated tract.

Any mineral lease of the nominated tract by the Louisiana State Mineral Board shall be without warranty of any kind, either express, implied, or statutory, including, but not limited to, the implied warranties or merchantability and fitness for a particular purpose. Should the mineral lease of the nominated tract awarded by the Louisiana State Mineral Board be subsequently modified, cancelled or abrogated due to the existence of conflicting leases, operating agreements, private claims or other existing of future obligations or conditions which may affect all or any portion of the leased tract, it shall not relieve the Lessee of the obligation to pay any bonus due thereon to the Louisiana State Mineral Board, nor shall the Louisiana State Mineral Board be obligated to refund any consideration paid by the Lessee prior to such modification, cancellation, or abrogation, including, but not limited to, bonuses, rents and royalties.

NOTE: This tract may be located within the Pass-A-Loutre Wildlife Management. Any operations on said tract shall be coordinated with the Louisiana Department of Wildlife and Fisheries. Special Rules and Regulations have been promulgated by the Louisiana Department of Wildlife and Fisheries for the protection of the game and wildlife for some management areas. Any lease awarded by the Board on said tract shall be subject to any applicable Rules and Regulations of said management area. Copies of these Rules and Regulations may be obtained from the Louisiana Department of Wildlife and Fisheries through the Assistant Secretary, Office of Wildlife, upon request.

NOTE: 1. No activities will be allowed without written authorization of the Louisiana Department of Wildlife and Fisheries. All projects will be coordinated and approved by the Pass-A-Loutre Wildlife Management Area Supervisor prior to any activities on the wildlife management area.

2. Proposed projects will be evaluated on a case by case basis. Modifications to proposed project features including but not limited to access routes, well sites, flowlines and appurtenant structures may be required by the Louisiana Department of Wildlife and Fisheries.

3. Compliance with the Pass-A-Loutre Wildlife Management Area regulations will be required unless otherwise specified by the Department of Wildlife and Fisheries.

4. Compensatory mitigation will be required to offset unavoidable habitat impacts.

5. Removal of all structures, facilities and equipment will be required within 120 days of abandonment unless otherwise agreed to by the Department of Wildlife and Fisheries.

6. No activities will be allowed during the hunting season unless approved by the Department of Wildlife and Fisheries.

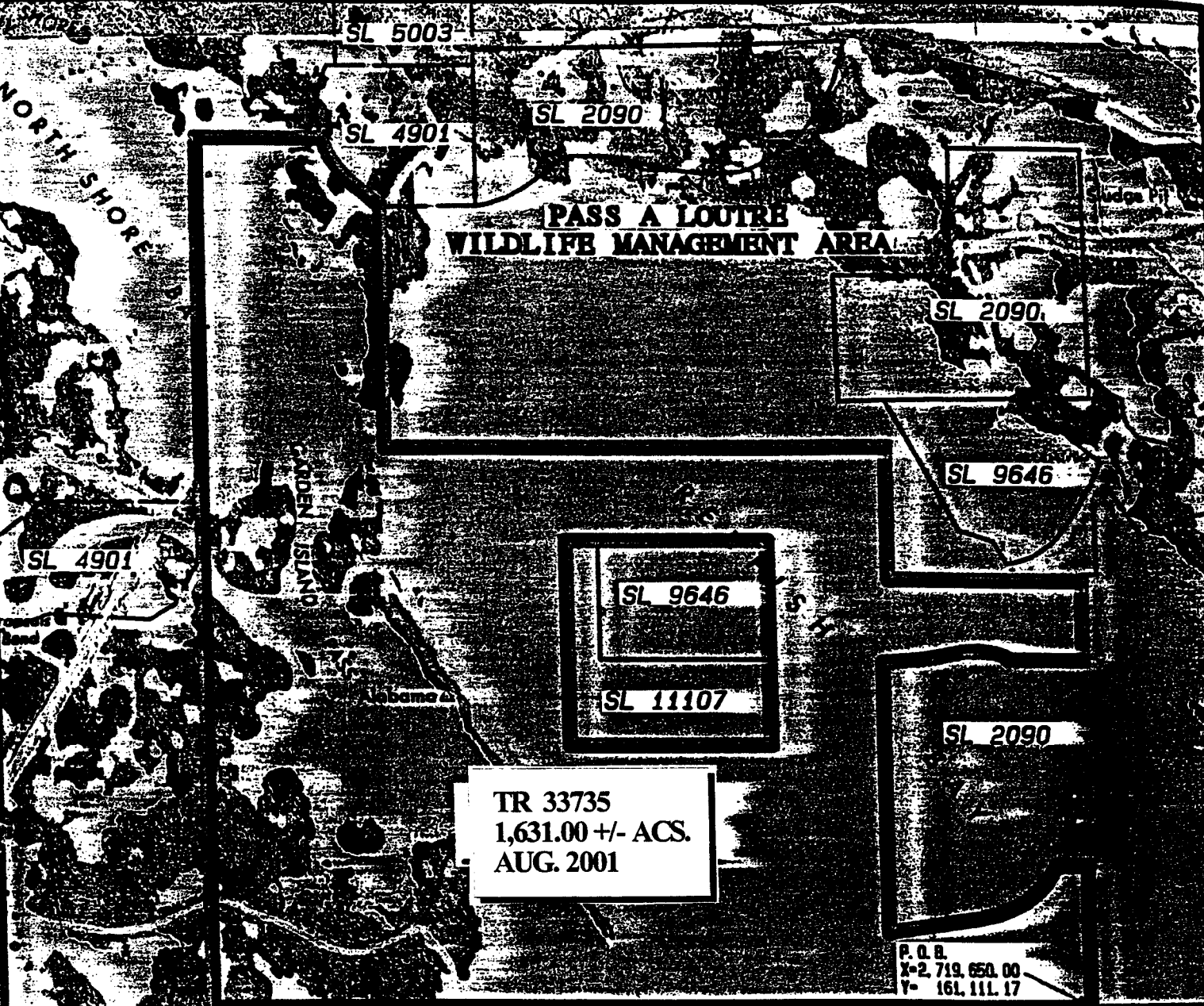
7. Prior to submitting applications for wetland permits to Federal and State permitting agencies, the leaseholder shall coordinate project details with the Department of Wildlife and Fisheries.

NOTE: The Department will require a minimum bonus of \$350.00 per acre and a minimum royalty of 25%.

NOTE: The State of Louisiana does hereby reserve, and this lease shall be subject to, the imprescriptible right of surface use in the nature of a servitude in favor of the Department of Natural Resources, including its Offices and Commissions, for the sole purpose of implementing, constructing, servicing and maintaining approved coastal zone management and/or restoration projects. Utilization of any and all rights derived under this lease by the mineral lessee, its agents, successors or assigns, shall not interfere with nor hinder the reasonable surface use by the Department of Natural Resources, its Offices or Commissions, as hereinabove reserved.

Applicant: Harold J. Anderson, Inc.

Bidder	Cash Payment	Price / Acre	Rental	Oil	Gas	Other



MAD 27 LAMBERT LA. SOUTH ZONE



Plaquemines Parish, Louisiana

REVISED:

