

**SOUTH PASS AREA
SP39**

127

S.L. 2565
S.L. 2566

S.L. 2552

SP40

S.L. 15218

S.L.
2568

OPEN

OPEN

OPEN

OPEN

S.L. 16991
SP42

2700' ZONE VUA

S.L.
12987

S.L.
13261

S.L.
12966

S.L. 8431

SUPREME
COURT DECREE
JUNE 1975

S.L.
12729

2700' ZONE VUA

S.L. 14380

TR 33695
2,244.00 +/- ACS.
AUG. 2001

SP43
OCS-G-9698

S.L.
12766

OCS-G-9698

LAMBERT GRID NORTH
NAD 1927 LA. S.Z.

P.O.B.

X= 2,615,928.00'
Y= 82,150.00'

OPEN

S.L.
16500

S.L. 16501

SP56
OPEN

SP58

SP57
OCS-G-2940

PLAQUEMINES PARISH, LOUISIANA



SCALE IN FEET

TRACT 33696 - PORTION OF BLOCK 42, SOUTH PASS AREA, Plaquemines Parish, Louisiana

That portion of Block 42, South Pass Area, Plaquemines Parish, Louisiana, belonging to the State of Louisiana and not under mineral lease on August 8, 2001, described as follows: Beginning at a point on the Southern boundary of State Lease No. 16991 having Coordinates of X = 2,630,686.00 and Y = 94,433.00, said point also being on the East line of Block 42, South Pass Area; thence South 4,904.00 feet on the East line of said Block 42; thence West 7,646.00 feet to a point on the Southern boundary of said State Lease No. 16991; thence North 57 degrees 19 minutes 29 seconds East 9,083.53 feet on the Southern boundary of said State Lease No. 16991 to the point of beginning, containing approximately **430 acres**, as shown outlined in red on a plat on file in the Office of Mineral Resources, Department of Natural Resources, as provided by the applicant. All bearings, distances and coordinates are based on Louisiana Coordinate System of 1927 (South Zone).

NOTE: The above description of the tract nominated for lease has been provided exclusively by the party nominating the tract for lease. The Louisiana State Mineral Board makes no representation as to the accuracy of the description of the nominated tract or its suitability for lease. The Louisiana State Mineral Board has made no inspection of the nominated tract for the existence of conflicting leases, operating agreements, private claims or other existing or future obligations or conditions which may affect all or any portion of the nominated tract or its suitability for lease.

Maps depicting the nominated tract, containing the bearings, distances and coordinates of the nominated tract based on the Louisiana Coordinate System of 1927, North or South Zone, as applicable, are available for public inspection and review at the offices of the Louisiana State Mineral Board from 10:00 a.m. to 3:00 p.m. Monday - Friday.

In the event of conflict between the description of the nominated tract set forth above and the description of the nominated property as contained on the maps maintained at the offices of the Louisiana State Mineral Board, the Louisiana State Mineral Board maps shall prevail and shall provide the final property description of the lease to be awarded of the nominated tract.

Any mineral lease of the nominated tract by the Louisiana State Mineral Board shall be without warranty of any kind, either express, implied, or statutory, including, but not limited to, the implied warranties or merchantability and fitness for a particular purpose. Should the mineral lease of the nominated tract awarded by the Louisiana State Mineral Board be subsequently modified, cancelled or abrogated due to the existence of conflicting leases, operating agreements, private claims or other existing of future obligations or conditions which may affect all or any portion of the leased tract, it shall not relieve the Lessee of the obligation to pay any bonus due thereon to the Louisiana State Mineral Board, nor shall the Louisiana State Mineral Board be obligated to refund any consideration paid by the Lessee prior to such modification, cancellation, or abrogation, including, but not limited to, bonuses, rents and royalties.

NOTE: The State of Louisiana does hereby reserve, and this lease shall be subject to, the imprescriptible right of surface use in the nature of a servitude in favor of the Department of Natural Resources, including its Offices and Commissions, for the sole purpose of implementing, constructing, servicing and maintaining approved coastal zone management and/or restoration projects. Utilization of any and all rights derived under this lease by the mineral lessee, its agents, successors or assigns, shall not interfere with nor hinder the reasonable surface use by the Department of Natural Resources, its Offices or Commissions, as hereinabove reserved.

Applicant: Sheila B. Roy

Bidder	Cash Payment	Price / Acre	Rental	Oil	Gas	Other

SOUTH PASS AREA

130

SP39

S.L. 15218

OPEN

SP40

OPEN

OPEN

P.O.B.

X= 2,630,686.00'

Y= 94,433.00'

S.L. 16991

SP42

±430 ACRES

OPEN

SP43
OCS-G-9698

S.L. 8431

S.L. 14380

TR 33696
430.00 +/- ACS.
AUG. 2001

OPEN

OCS-G-9698

OPEN

S.L. 16501

SUPREME
COURT DECREE
JUNE 1975

SP56
OPEN

SP58

SP57
OCS-G-2940

S.L. 16500

2700 ZONE VIA

S.L. 12967

S.L. 13281

S.L. 12966

S.L. 12729

S.L. 12766

OPEN

LAMBERT GRID NORTH
NAD 1927 LA. S.Z.

PLAQUEMINES PARISH, LOUISIANA

4000' 0' 4000' 8000'

SCALE IN FEET

TRACT 33697 - PORTION OF BLOCK 54, WEST DELTA AREA, Plaquemines Parish, Louisiana

That portion of Block 54, West Delta Area, Plaquemines Parish, Louisiana, belonging to the State of Louisiana and not under mineral lease on August 8, 2001, described as follows: Beginning at the Northwest corner of Block 54, West Delta Area, having Coordinates of X = 2,615,927.93 and Y = 144,676.30; thence East 10,450.00 feet on the North line of said Block 54 to its Northeast corner; thence South 4,500.00 feet to the Northeast corner of State Lease No. 979, as amended; thence along the boundary of said State Lease No. 979 the following courses: North 55 degrees 07 minutes 49 seconds West 5,242.14 feet; thence North 89 degrees 58 minutes 19 seconds West 6,149.07 feet to a point on the West line of said Block 54; thence North 1,500.00 feet to the point of beginning, containing approximately **508 acres**, as shown outlined in red on a plat on file in the Office of Mineral Resources, Department of Natural Resources, as provided by the applicant. All bearings, distances and coordinates are based on Louisiana Coordinate System of 1927 (South Zone).

NOTE: The above description of the tract nominated for lease has been provided exclusively by the party nominating the tract for lease. The Louisiana State Mineral Board makes no representation as to the accuracy of the description of the nominated tract or its suitability for lease. The Louisiana State Mineral Board has made no inspection of the nominated tract for the existence of conflicting leases, operating agreements, private claims or other existing or future obligations or conditions which may affect all or any portion of the nominated tract or its suitability for lease.

Maps depicting the nominated tract, containing the bearings, distances and coordinates of the nominated tract based on the Louisiana Coordinate System of 1927, North or South Zone, as applicable, are available for public inspection and review at the offices of the Louisiana State Mineral Board from 10:00 a.m. to 3:00 p.m. Monday - Friday.

In the event of conflict between the description of the nominated tract set forth above and the description of the nominated property as contained on the maps maintained at the offices of the Louisiana State Mineral Board, the Louisiana State Mineral Board maps shall prevail and shall provide the final property description of the lease to be awarded of the nominated tract.

Any mineral lease of the nominated tract by the Louisiana State Mineral Board shall be without warranty of any kind, either express, implied, or statutory, including, but not limited to, the implied warranties or merchantability and fitness for a particular purpose. Should the mineral lease of the nominated tract awarded by the Louisiana State Mineral Board be subsequently modified, cancelled or abrogated due to the existence of conflicting leases, operating agreements, private claims or other existing of future obligations or conditions which may affect all or any portion of the leased tract, it shall not relieve the Lessee of the obligation to pay any bonus due thereon to the Louisiana State Mineral Board, nor shall the Louisiana State Mineral Board be obligated to refund any consideration paid by the Lessee prior to such modification, cancellation, or abrogation, including, but not limited to, bonuses,

rents and royalties.

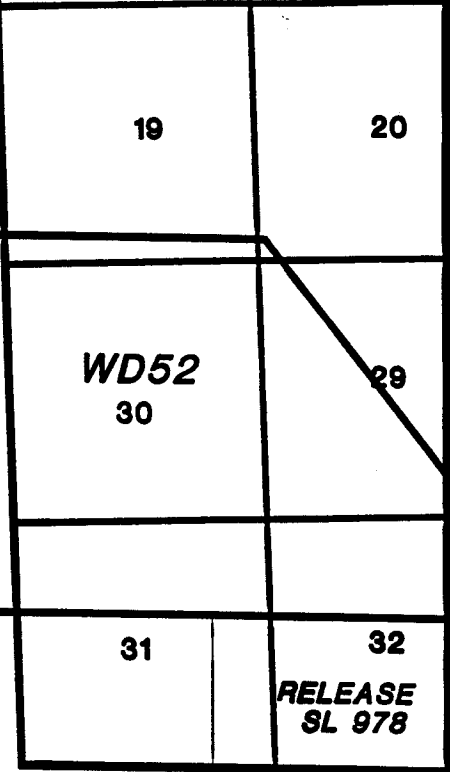
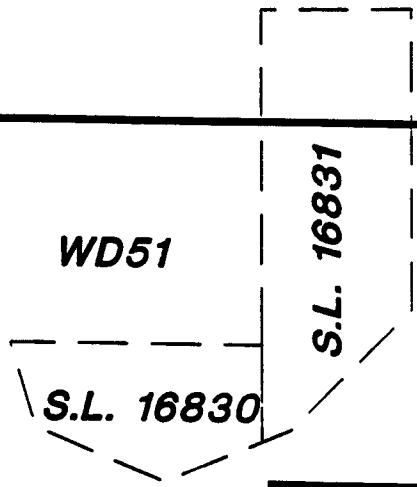
NOTE: The State of Louisiana does hereby reserve, and this lease shall be subject to, the imprescriptible right of surface use in the nature of a servitude in favor of the Department of Natural Resources, including its Offices and Commissions, for the sole purpose of implementing, constructing, servicing and maintaining approved coastal zone management and/or restoration projects. Utilization of any and all rights derived under this lease by the mineral lessee, its agents, successors or assigns, shall not interfere with nor hinder the reasonable surface use by the Department of Natural Resources, its Offices or Commissions, as hereinabove reserved.

Applicant: Sheila B. Roy

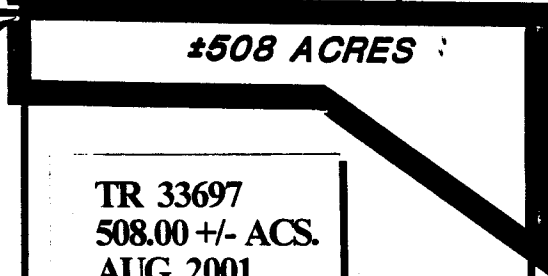
Bidder	Cash Payment	Price / Acre	Rental	Oil	Gas	Other

10	11	12	7	8 733
15	T23S-R30E 14	13	T23S-R31E	17
			18	19

LAMBERT GRID NORTH
NAD 1927 LA. S.Z.



P.O.B.
X= 2,615,927.93'
Y= 144,676.30'



S.L. 2550

S.L. 2549

WD55

S.L. 1071

TR 33697
508.00 +/- ACS.
AUG. 2001

WD54
S.L. 979

AO 0161

AO 0160

S.L. 978

AO 0105

WD53

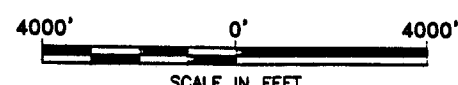
S.L. 15703

T24S-R30E

RELEASE
SL 978

WEST DELTA AREA

PLAQUEMINES PARISH, LOUISIANA



TRACT 33698 - PORTION OF BLOCK 25, SOUTH PASS AREA, Plaquemines Parish, Louisiana

That portion of Block 25, South Pass Area, Plaquemines Parish, Louisiana, belonging to the State of Louisiana and not under mineral lease on August 8, 2001, described as follows: Beginning at a point on the East line of Block 25, South Pass Area, having Coordinates of X = 2,645,444.00 and Y = 130,750.00; thence West 5,184.00 feet to a point of intersection with the boundary of State Lease No. 1009, as amended; thence along said boundary of said State Lease No. 1009 the following courses: North 24 degrees 02 minutes 48 seconds East 1,445.44 feet; thence North 63 degrees 57 minutes 18 seconds East 296.08 feet; thence North 64 degrees 17 minutes 24 seconds 299.67; thence North 35 degrees 13 minutes 03 seconds East 312.13 feet; thence North 28 degrees 18 minutes 03 seconds East 147.65 feet; thence North 16 degrees 51 minutes 30 seconds East 172.41 feet; thence North 71 degrees 53 minutes 46 seconds East 273.54 feet; thence North 66 degrees 08 minutes 23 seconds East 284.30 feet; thence North 62 degrees 02 minutes 57 seconds East 277.35 feet; thence North 56 degrees 51 minutes 11 seconds East 292.62 feet; thence North 56 degrees 18 minutes 36 seconds East 288.44 feet; thence North 05 degrees 42 minutes 38 seconds West 351.75 feet; thence North 13 degrees 27 minutes 55 seconds West 365.03 feet; thence North 20 degrees 20 minutes 39 seconds West 474.61 feet; thence North 24 degrees 12 minutes 05 seconds West 487.88 feet; thence North 23 degrees 29 minutes 41 seconds West 294.41 feet; thence North 24 degrees 02 minutes 48 seconds East 1,147.01 feet; thence South 77 degrees 11 minutes 10 seconds East 1,271.52 feet; thence South 45 degrees 34 minutes 34 seconds East 1,966.08 feet to a point of intersection with the East line of said Block 25; thence South 4,034.29 feet on the East line of said Block 25 to the point of beginning, containing approximately **420 acres**, as shown outlined in red on a plat on file in the Office of Mineral Resources, Department of Natural Resources, as provided by the applicant. All bearings, distances and coordinates are based on Louisiana Coordinate System of 1927 (South Zone).

NOTE: The above description of the tract nominated for lease has been provided exclusively by the party nominating the tract for lease. The Louisiana State Mineral Board makes no representation as to the accuracy of the description of the nominated tract or its suitability for lease. The Louisiana State Mineral Board has made no inspection of the nominated tract for the existence of conflicting leases, operating agreements, private claims or other existing or future obligations or conditions which may affect all or any portion of the nominated tract or its suitability for lease.

Maps depicting the nominated tract, containing the bearings, distances and coordinates of the nominated tract based on the Louisiana Coordinate System of 1927, North or South Zone, as applicable, are available for public inspection and review at the offices of the Louisiana State Mineral Board from 10:00 a.m. to 3:00 p.m. Monday - Friday.

In the event of conflict between the description of the nominated tract set forth above and the description of the nominated property as contained on the maps maintained at the offices of the Louisiana State Mineral Board, the Louisiana State Mineral Board maps shall prevail and shall provide the final property description of the lease to be awarded of the nominated tract.

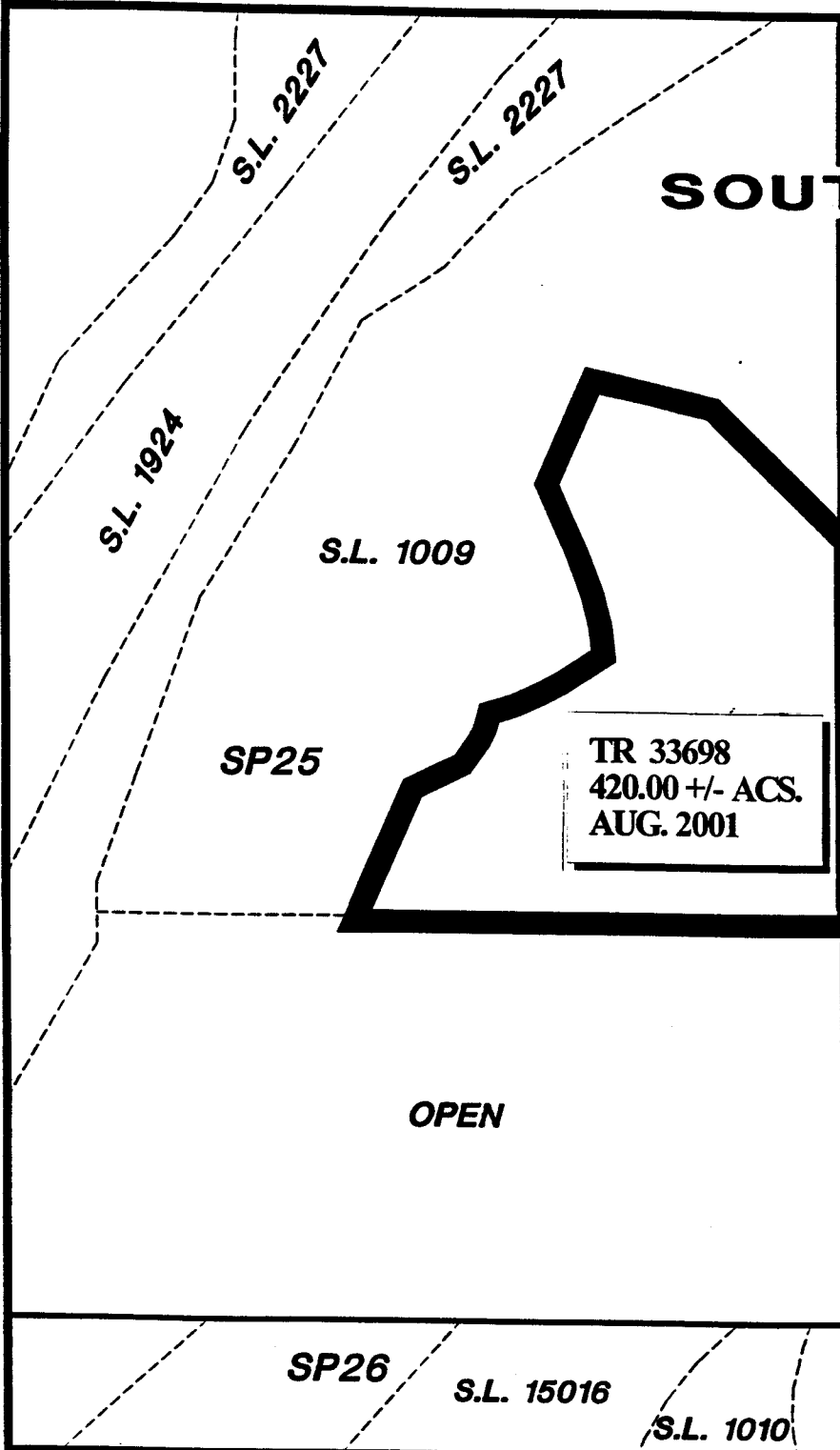
Any mineral lease of the nominated tract by the Louisiana State Mineral Board shall be without warranty of any kind, either express, implied, or statutory, including, but not limited to, the implied warranties or merchantability and fitness for a particular purpose. Should the mineral lease of the nominated tract awarded by the Louisiana State Mineral Board be subsequently modified, cancelled or abrogated due to the existence of conflicting leases, operating agreements, private claims or other existing of future obligations or conditions which may affect all or any portion of the leased tract, it shall not relieve the Lessee of the obligation to pay any bonus due thereon to the Louisiana State Mineral Board, nor shall the Louisiana State Mineral Board be obligated to refund any consideration paid by the Lessee prior to such modification, cancellation, or abrogation, including, but not limited to, bonuses, rents and royalties.

NOTE: The State of Louisiana does hereby reserve, and this lease shall be subject to, the imprescriptible right of surface use in the nature of a servitude in favor of the Department of Natural Resources, including its Offices and Commissions, for the sole purpose of implementing, constructing, servicing and maintaining approved coastal zone management and/or restoration projects. Utilization of any and all rights derived under this lease by the mineral lessee, its agents, successors or assigns, shall not interfere with nor hinder the reasonable surface use by the Department of Natural Resources, its Offices or Commissions, as hereinabove reserved.

Applicant: Sheila B. Roy

Bidder	Cash Payment	Price / Acre	Rental	Oil	Gas	Other

SOUTH PASS AREA



TR 33698
 420.00 +/- ACS.
 AUG. 2001

SP24
 S.L. 1008

P.O.B.
 X= 2,645,444.00'
 Y= 130,750.00'



LAMBERT GRID NORTH
 NAD 1927 LA. S.Z.

PLAQUEMINES PARISH, LOUISIANA



TRACT 33699 - PORTION OF BLOCK 25, SOUTH PASS AREA, Plaquemines Parish, Louisiana

That portion of Block 25, South Pass Area, Plaquemines Parish, Louisiana, belonging to the State of Louisiana and not under mineral lease on August 8, 2001, described as follows: Beginning at the Southeast corner of Block 25, South Pass Area, having Coordinates of X = 2,645,444.00 and Y = 126,424.00; thence West approximately 10,147 feet to a point of intersection with the Eastern boundary of State Lease No. 2227; thence Northeasterly approximately 4,830 feet on the Eastern boundary of said State Lease No. 2227 to a point of intersection with a line having a Coordinate of Y = 130,750.00; thence East approximately 8,100 feet to a point on the East line of said Block 25; thence South 4,326.00 feet on the East line of said Block 25 to the point of beginning, **LESS AND EXCEPT** any portion of State Lease No. 1009 that may lie within the above described tract, containing approximately 905 acres, as shown outlined in red on a plat on file in the Office of Mineral Resources, Department of Natural Resources, as provided by the applicant. All bearings, distances and coordinates are based on Louisiana Coordinate System of 1927 (South Zone).

NOTE: The above description of the tract nominated for lease has been provided exclusively by the party nominating the tract for lease. The Louisiana State Mineral Board makes no representation as to the accuracy of the description of the nominated tract or its suitability for lease. The Louisiana State Mineral Board has made no inspection of the nominated tract for the existence of conflicting leases, operating agreements, private claims or other existing or future obligations or conditions which may affect all or any portion of the nominated tract or its suitability for lease.

Maps depicting the nominated tract, containing the bearings, distances and coordinates of the nominated tract based on the Louisiana Coordinate System of 1927, North or South Zone, as applicable, are available for public inspection and review at the offices of the Louisiana State Mineral Board from 10:00 a.m. to 3:00 p.m. Monday - Friday.

In the event of conflict between the description of the nominated tract set forth above and the description of the nominated property as contained on the maps maintained at the offices of the Louisiana State Mineral Board, the Louisiana State Mineral Board maps shall prevail and shall provide the final property description of the lease to be awarded of the nominated tract.

Any mineral lease of the nominated tract by the Louisiana State Mineral Board shall be without warranty of any kind, either express, implied, or statutory, including, but not limited to, the implied warranties or merchantability and fitness for a particular purpose. Should the mineral lease of the nominated tract awarded by the Louisiana State Mineral Board be subsequently modified, cancelled or abrogated due to the existence of conflicting leases, operating agreements, private claims or other existing of future obligations or conditions which may affect all or any portion of the leased tract, it shall not relieve the Lessee of the obligation to pay any bonus due thereon to the Louisiana State Mineral Board, nor shall the Louisiana State Mineral Board be obligated to refund any consideration paid by the Lessee prior to such modification,

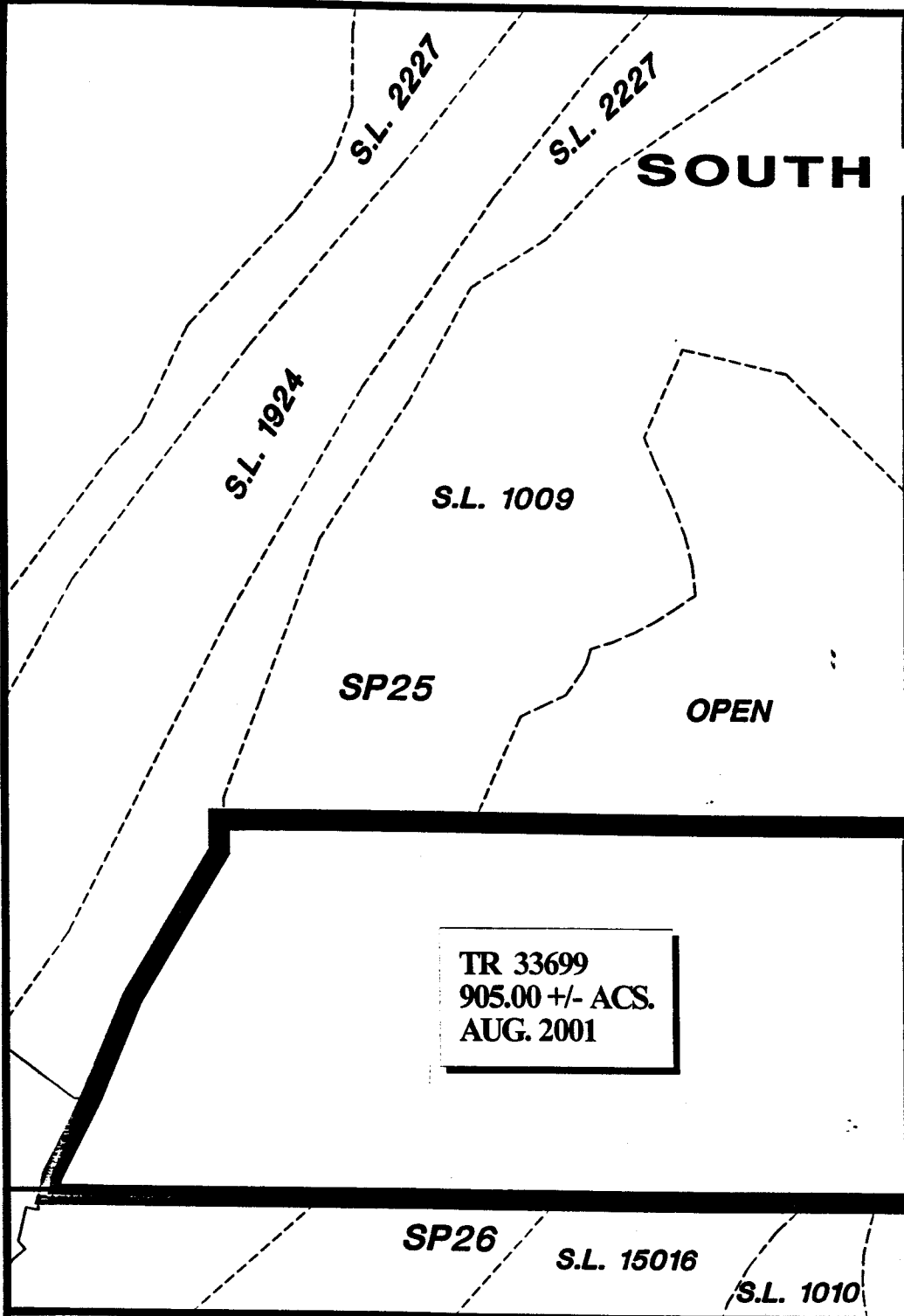
cancellation, or abrogation, including, but not limited to, bonuses, rents and royalties.

NOTE: The State of Louisiana does hereby reserve, and this lease shall be subject to, the imprescriptible right of surface use in the nature of a servitude in favor of the Department of Natural Resources, including its Offices and Commissions, for the sole purpose of implementing, constructing, servicing and maintaining approved coastal zone management and/or restoration projects. Utilization of any and all rights derived under this lease by the mineral lessee, its agents, successors or assigns, shall not interfere with nor hinder the reasonable surface use by the Department of Natural Resources, its Offices or Commissions, as hereinabove reserved.

Applicant: Sheila B. Roy

Bidder	Cash Payment	Price / Acre	Rental	Oil	Gas	Other

SOUTH PASS AREA



TR 33699
 905.00 +/- ACS.
 AUG. 2001

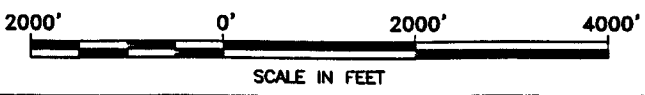
SP24
 S.L. 1008



LAMBERT GRID NORTH
 NAD 1927 LA. S.Z.

P.O.B.
 X=2,645,444.00
 Y= 126,424.00

PLAQUEMINES PARISH, LOUISIANA



TRACT 33700 - PORTION OF BLOCK 27, SOUTH PASS AREA, Plaquemines Parish, Louisiana

That portion of Block 27, South Pass Area, Plaquemines Parish, Louisiana, belonging to the State of Louisiana and not under mineral lease on August 8, 2001, described as follows: Beginning at a point on the West line of Block 27, South Pass Area, having Coordinates of X = 2,645,444.00 and Y = 121,225.00, said point also being the Southwest corner of State Lease No. 1011, as amended; thence along the Southern boundary of said State Lease No. 1011 the following courses: East 8,885.32 feet; thence South 20 degrees 46 minutes 55 seconds West 2,331.71 feet; thence East 3,195.12 feet to a point of intersection with the three mile line as set out in the June, 1975, decree of the Supreme Court; thence Southwesterly approximately 10,239 feet on said three mile line to a point of intersection with the South line of said Block 27; thence West 4,257.41 feet on the South line of said Block 27 to its Southwest corner having Coordinates of X = 2,645,444.00 and Y = 111,666.00; thence North 9,559.00 feet on the West line of said Block 27 to the point of beginning, containing approximately 1,797 acres, as shown outlined in red on a plat on file in the Office of Mineral Resources, Department of Natural Resources, **LESS AND EXCEPT** that portion thereof, if any, which is more than three nautical miles from the coast line as determined by the Report of the Special Master in the litigation in the Supreme Court of the United States styled United States v. State of Louisiana et al No. 9 Original, said three mile line as set out in the June, 1975, decree of the Supreme Court, as provided by the applicant. All bearings, distances and coordinates are based on Louisiana Coordinate System of 1927 (South Zone).

NOTE: The above description of the tract nominated for lease has been provided exclusively by the party nominating the tract for lease. The Louisiana State Mineral Board makes no representation as to the accuracy of the description of the nominated tract or its suitability for lease. The Louisiana State Mineral Board has made no inspection of the nominated tract for the existence of conflicting leases, operating agreements, private claims or other existing or future obligations or conditions which may affect all or any portion of the nominated tract or its suitability for lease.

Maps depicting the nominated tract, containing the bearings, distances and coordinates of the nominated tract based on the Louisiana Coordinate System of 1927, North or South Zone, as applicable, are available for public inspection and review at the offices of the Louisiana State Mineral Board from 10:00 a.m. to 3:00 p.m. Monday - Friday.

In the event of conflict between the description of the nominated tract set forth above and the description of the nominated property as contained on the maps maintained at the offices of the Louisiana State Mineral Board, the Louisiana State Mineral Board maps shall prevail and shall provide the final property description of the lease to be awarded of the nominated tract.

Any mineral lease of the nominated tract by the Louisiana State Mineral Board shall be without warranty of any kind, either express, implied, or statutory, including, but not limited to, the implied warranties or merchantability and fitness for a particular purpose. Should the mineral lease of the nominated tract awarded by the Louisiana State Mineral Board be subsequently modified, cancelled or

abrogated due to the existence of conflicting leases, operating agreements, private claims or other existing of future obligations or conditions which may affect all or any portion of the leased tract, it shall not relieve the Lessee of the obligation to pay any bonus due thereon to the Louisiana State Mineral Board, nor shall the Louisiana State Mineral Board be obligated to refund any consideration paid by the Lessee prior to such modification, cancellation, or abrogation, including, but not limited to, bonuses, rents and royalties.

NOTE: The State of Louisiana does hereby reserve, and this lease shall be subject to, the imprescriptible right of surface use in the nature of a servitude in favor of the Department of Natural Resources, including its Offices and Commissions, for the sole purpose of implementing, constructing, servicing and maintaining approved coastal zone management and/or restoration projects. Utilization of any and all rights derived under this lease by the mineral lessee, its agents, successors or assigns, shall not interfere with nor hinder the reasonable surface use by the Department of Natural Resources, its Offices or Commissions, as hereinabove reserved.

Applicant: Sheila B. Roy

Bidder	Cash Payment	Price / Acre	Rental	Oil	Gas	Other

S.L. 1010

S.L. 1011

P.O.B.
X= 2,645,444.00'
Y= 121,225.00'

SP27

SP26

TR 33700
1,797.00 +/- ACS.
AUG. 2001

S.L. 15016

OCS-0693

OPEN



LAMBERT GRID NORTH
NAD 1927 LA. S.Z.

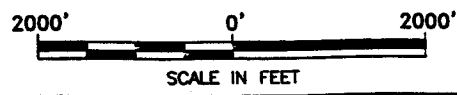
S.L. 15150

S.L. 15152

SUPREME
COURT DECREE
JUNE 1975

SP38
OCS-G-14572

PLAQUEMINES PARISH, LOUISIANA



TRACT 33701 - PORTION OF BLOCK 39, SOUTH PASS AREA, Plaquemines Parish, Louisiana

That portion of Block 39, South Pass Area, Plaquemines Parish, Louisiana, belonging to the State of Louisiana and not under mineral lease on August 8, 2001, described as follows: Beginning at a point on the East line of Block 39, South Pass Area, also being the Southeast corner of State Lease No. 15150, having Coordinates of X = 2,645,444.00 and Y = 106,553.66; thence South approximately 899 feet on the East line of said Block 39 to a point of intersection with the three mile line as set out in the June, 1975, decree of the Supreme Court; thence in a Southwesterly direction approximately 10,940 feet on said three mile line to a point of intersection with the South line of said Block 39 having Coordinates of X = 2,638,911.00 and Y = 96,908.00; thence West approximately 854 feet on the South line of said Block 39 to the Southeast corner of State Lease No. 15218 having Coordinates of X = 2,638,057.00 and Y = 96,908.00; thence North 9,645.00 feet on the East line of said State Lease No. 15218 to the Southwest corner of State Lease No. 15333 having Coordinates of X = 2,638,057.00 and Y = 106,572.45; thence East 2,274.66 feet along the South line of said State Lease No. 15333 to its Southeast corner, also being a point on the West line of State Lease No. 15150 having Coordinates of X = 2,640,331.66 and Y = 106,572.45; thence South 18.79 feet along the West line of said State Lease No. 15150 to its Southwest corner; thence East 5,112.34 feet along the South line of said State Lease No. 15150 to the point of beginning, containing approximately **1,018 acres**, as shown outlined in red on a plat on file in the Office of Mineral Resources, Department of Natural Resources, **LESS AND EXCEPT** that portion thereof, if any, which is more than three nautical miles from the coast line as determined by the Report of the Special Master in the litigation in the Supreme Court of the United States styled United States v. State of Louisiana et al No. 9 Original, said three mile line as set out in the June, 1975, decree of the Supreme Court, as provided by the applicant. All bearings, distances and coordinates are based on Louisiana Coordinate System of 1927 (South Zone).

NOTE: The above description of the tract nominated for lease has been provided exclusively by the party nominating the tract for lease. The Louisiana State Mineral Board makes no representation as to the accuracy of the description of the nominated tract or its suitability for lease. The Louisiana State Mineral Board has made no inspection of the nominated tract for the existence of conflicting leases, operating agreements, private claims or other existing or future obligations or conditions which may affect all or any portion of the nominated tract or its suitability for lease.

Maps depicting the nominated tract, containing the bearings, distances and coordinates of the nominated tract based on the Louisiana Coordinate System of 1927, North or South Zone, as applicable, are available for public inspection and review at the offices of the Louisiana State Mineral Board from 10:00 a.m. to 3:00 p.m. Monday - Friday.

In the event of conflict between the description of the nominated tract set forth above and the description of the nominated property as contained on the maps maintained at the offices of the Louisiana State Mineral Board, the Louisiana State Mineral Board maps shall prevail and shall provide the final property description of the lease