

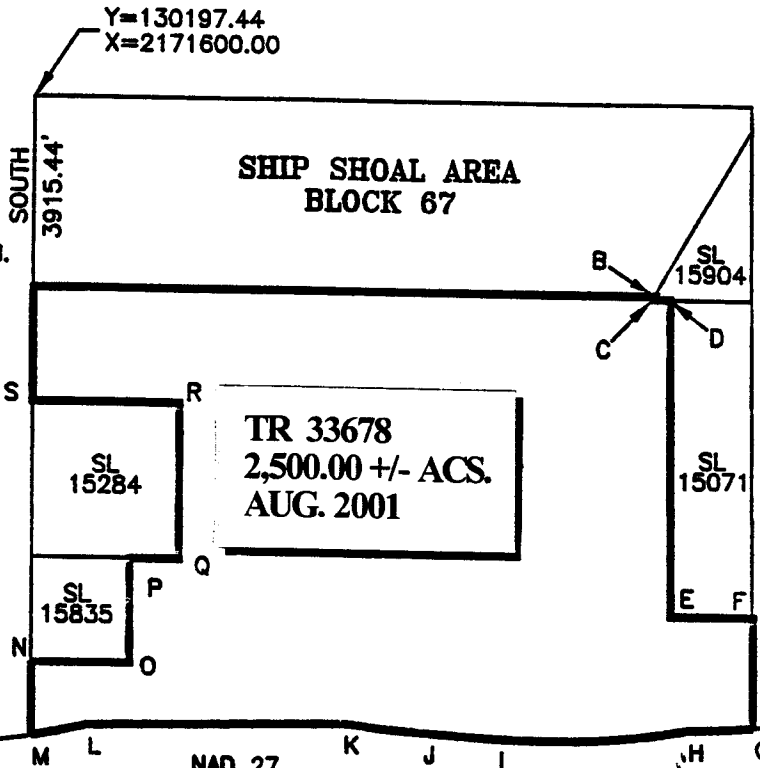
GULF OF MEXICO

COURSES:

LOUISIANA COORDINATE SYSTEM
(1927 SOUTH ZONE)



P.O.B.
A



3 MILE LINE AS
SET OUT IN THE
JUNE, 1975,
DECREE OF THE
SUPREME COURT

A-B	EAST	12849.85'
B-C	S30°32'04"W	98.12'
C-D	N89°59'54"E	374.73'
D-E	S00°17'30"E	6500.14'
E-F	EAST	1700.03'
F-G	S00°17'30"E	2244.91'
G-H	RADIUS: 18240.60'	
	RADIUS POINT:	
	X=2184789.06	
	Y= 135610.91	
H-I	RADIUS: 18240.60'	
	RADIUS POINT:	
	X=2182168.46	
	Y= 135368.28	
I-J	N86°39'04"W	1523.60'
J-K	RADIUS: 18240.60'	
	RADIUS POINT:	
	X=2180637.11	
	Y= 135457.88	
K-L	S88°52'17"W	5280.02'
L-M	S77°59'23"W	1124.62'
M-N	NORTH	1497.79'
N-O	EAST	2000.00'
O-P	NORTH	2152.21'
P-Q	EAST	1000.00'
Q-R	NORTH	3200.00'
R-S	WEST	3000.00'
S-A	NORTH	2358.03'

TR 33678
2,500.00 +/- ACS.
AUG. 2001

A	X=2171600.00	Y=126282.01	M	X=2171600.00	Y=117073.98
B	X=2184449.85	Y=126282.01	N	X=2171600.00	Y=118571.77
C	X=2184400.00	Y=126197.49	O	X=2173600.00	Y=118571.77
D	X=2184774.73	Y=126197.50	P	X=2173600.00	Y=120723.98
E	X=2184807.82	Y=119697.44	Q	X=2174600.00	Y=120723.98
F	X=2186507.85	Y=119697.44	R	X=2174600.00	Y=123923.98
G	X=2186519.28	Y=117452.56	S	X=2171600.00	Y=123923.98
H	X=2185156.00	Y=117374.00			
I	X=2181100.00	Y=117159.00			
J	X=2179579.00	Y=117248.00			
K	X=2177979.00	Y=117412.00			
L	X=2172700.00	Y=117308.00			

NAD 83

A	X=3452399.72	Y=186987.91
---	--------------	-------------

GRAPHIC SCALE



NOTE:
NAD83 COORDINATES WERE CONVERTED
TO FROM NAD27 COORDINATES USING THE
CORPSCON SOFTWARE FROM THE U.S.
ARMY TOPOGRAPHIC ENGINEERING CENTER.

NOTE: UNLESS OTHERWISE NOTED
COORDINATES ARE BASED ON NAD27.

NO.	DATE	REVISION
-----	------	----------

2500.00 ACRE TRACT; AREA OF INTEREST
LOUISIANA STATE MINERAL BOARD OIL & GAS LEASE
BLOCK 67, SHIP SHOAL AREA
GULF OF MEXICO
TERREBONNE PARISH, LOUISIANA

SCALE: 1"=4000'

TRACT 33679 - PORTION OF BLOCK 7, SOUTH TIMBALIER AREA, REVISED, Terrebonne Parish, Louisiana

That portion of Block 7, South Timbalier Area, Revised, Terrebonne Parish, Louisiana, belonging to the State of Louisiana and not under mineral lease on August 8, 2001, described as follows: Beginning at the Southwest corner of Block 7, South Timbalier Area, Revised, having Coordinates of X = 2,186,463.11 and Y = 128,484.76; thence North 00 degrees 17 minutes 30 seconds West along the West line of said Block 7 a distance of 6,980.55 feet to a point having Coordinates of X = 2,186,427.56 and Y = 135,465.22; thence East a distance of 15,618.46 feet to a point on the East line of said Block 7, said point having Coordinates of X = 2,202,046.02 and Y = 135,465.22; thence South along said East line a distance of 6,980.46 feet to a point at the Southeast corner of Block 7, said point having Coordinates of X = 2,202,046.02 and Y = 128,484.76; thence West along the South line of said Block 7 a distance of 15,582.91 feet to the point of beginning, containing approximately **2,500.00 acres**, as shown outlined in red on a plat on file in the Office of Mineral Resources, Department of Natural Resources, as provided by the applicant. All bearings, distances and coordinates are based on Louisiana Coordinate System of 1927 (South Zone).

NOTE: The above description of the tract nominated for lease has been provided exclusively by the party nominating the tract for lease. The Louisiana State Mineral Board makes no representation as to the accuracy of the description of the nominated tract or its suitability for lease. The Louisiana State Mineral Board has made no inspection of the nominated tract for the existence of conflicting leases, operating agreements, private claims or other existing or future obligations or conditions which may affect all or any portion of the nominated tract or its suitability for lease.

Maps depicting the nominated tract, containing the bearings, distances and coordinates of the nominated tract based on the Louisiana Coordinate System of 1927, North or South Zone, as applicable, are available for public inspection and review at the offices of the Louisiana State Mineral Board from 10:00 a.m. to 3:00 p.m. Monday - Friday.

In the event of conflict between the description of the nominated tract set forth above and the description of the nominated property as contained on the maps maintained at the offices of the Louisiana State Mineral Board, the Louisiana State Mineral Board maps shall prevail and shall provide the final property description of the lease to be awarded of the nominated tract.

Any mineral lease of the nominated tract by the Louisiana State Mineral Board shall be without warranty of any kind, either express, implied, or statutory, including, but not limited to, the implied warranties or merchantability and fitness for a particular purpose. Should the mineral lease of the nominated tract awarded by the Louisiana State Mineral Board be subsequently modified, cancelled or abrogated due to the existence of conflicting leases, operating agreements, private claims or other existing of future obligations or conditions which may affect all or any portion of the leased tract, it shall not relieve the Lessee of the obligation to pay any bonus due thereon to the Louisiana State Mineral Board, nor shall the Louisiana State Mineral Board be obligated to refund any

consideration paid by the Lessee prior to such modification, cancellation, or abrogation, including, but not limited to, bonuses, rents and royalties.

NOTE: The State of Louisiana does hereby reserve, and this lease shall be subject to, the imprescriptible right of surface use in the nature of a servitude in favor of the Department of Natural Resources, including its Offices and Commissions, for the sole purpose of implementing, constructing, servicing and maintaining approved coastal zone management and/or restoration projects. Utilization of any and all rights derived under this lease by the mineral lessee, its agents, successors or assigns, shall not interfere with nor hinder the reasonable surface use by the Department of Natural Resources, its Offices or Commissions, as hereinabove reserved.

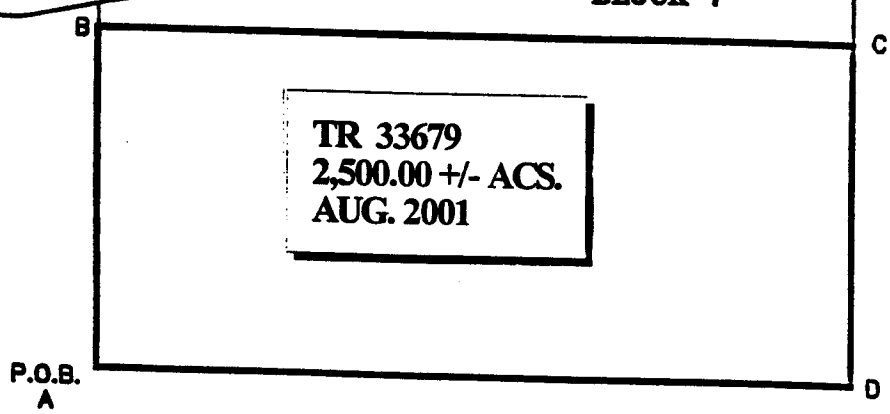
Applicant: G. K. Grady

Bidder	Cash Payment	Price / Acre	Rental	Oil	Gas	Other

LOUISIANA COORDINATE SYSTEM
(1927 SOUTH ZONE)

COASTLINE AS USED TO SET
THE THREE MILE LINE IN THE JUNE,
1975, SUPREME COURT DECREE.

**SOUTH TIMBALIER AREA, REVISED
BLOCK 7**



COURSES:

A-B	N00°17'31"W	6980.55'
B-C	EAST	15618.46'
C-D	SOUTH	6980.46'
D-A	WEST	15582.91'

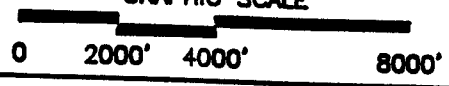
NAD 27

A	X=2186463.11	Y=128484.76
B	X=2186427.56	Y=135485.22
C	X=2202046.02	Y=135485.22
D	X=2202046.02	Y=128484.76

NAD 83

A	X=3467262.61	Y=189190.93
---	--------------	-------------

GRAPHIC SCALE



NOTE: UNLESS OTHERWISE NOTED
COORDINATES ARE BASED ON NAD27.

NOTE:
NAD83 COORDINATES WERE CONVERTED
TO/FROM NAD27 COORDINATES USING THE
CORPSCON SOFTWARE FROM THE U.S.
ARMY TOPOGRAPHIC ENGINEERING CENTER.

NO.	DATE	REVISION

**2500.000 ACRE TRACT; AREA OF INTEREST
LOUISIANA STATE MINERAL BOARD OIL & GAS LEASE
BLOCK 7, SOUTH TIMBALIER AREA REVISED
GULF OF MEXICO
TERREBONNE PARISH, LOUISIANA**

SCALE: 1"=4000'

TRACT 33680 - PORTION OF BLOCK 1, SOUTH PELTO AREA, Terrebonne Parish, Louisiana

That portion of Block 1, South Pelto Area, Terrebonne Parish, Louisiana, belonging to the State of Louisiana and not under mineral lease on August 8, 2001, described as follows: Beginning at the Northeast corner of Block 1, South Pelto Area, having Coordinates of X = 2,202,046.02 and Y = 128,484.76; thence South along the East line of said Block 1 a distance of 1,300.73 feet to a point having Coordinates of X = 2,202,046.02 and Y = 127,184.03; thence West a distance of 11,024.84 feet to a point on the Southeasterly line of State Lease No. 15074, said point having Coordinates of X = 2,191,021.18 and Y = 127,184.03; thence North 18 degrees 45 minutes 53 seconds East along the Southeasterly line of said State Lease No. 15074 a distance of 1,373.74 feet to a point on the North line of said Block 1 having Coordinates of X = 2,191,463.19 and Y = 128,484.76; thence East along the North line of said Block 1 a distance of 10,582.93 feet to the point of beginning, containing approximately **322.61 acres**, as shown outlined in red on a plat on file in the Office of Mineral Resources, Department of Natural Resources, as provided by the applicant. All bearings, distances and coordinates are based on Louisiana Coordinate System of 1927 (South Zone).

NOTE: The above description of the tract nominated for lease has been provided exclusively by the party nominating the tract for lease. The Louisiana State Mineral Board makes no representation as to the accuracy of the description of the nominated tract or its suitability for lease. The Louisiana State Mineral Board has made no inspection of the nominated tract for the existence of conflicting leases, operating agreements, private claims or other existing or future obligations or conditions which may affect all or any portion of the nominated tract or its suitability for lease.

Maps depicting the nominated tract, containing the bearings, distances and coordinates of the nominated tract based on the Louisiana Coordinate System of 1927, North or South Zone, as applicable, are available for public inspection and review at the offices of the Louisiana State Mineral Board from 10:00 a.m. to 3:00 p.m. Monday - Friday.

In the event of conflict between the description of the nominated tract set forth above and the description of the nominated property as contained on the maps maintained at the offices of the Louisiana State Mineral Board, the Louisiana State Mineral Board maps shall prevail and shall provide the final property description of the lease to be awarded of the nominated tract.

Any mineral lease of the nominated tract by the Louisiana State Mineral Board shall be without warranty of any kind, either express, implied, or statutory, including, but not limited to, the implied warranties or merchantability and fitness for a particular purpose. Should the mineral lease of the nominated tract awarded by the Louisiana State Mineral Board be subsequently modified, cancelled or abrogated due to the existence of conflicting leases, operating agreements, private claims or other existing of future obligations or conditions which may affect all or any portion of the leased tract, it shall not relieve the Lessee of the obligation to pay any bonus due thereon to the Louisiana State Mineral Board, nor shall the Louisiana State Mineral Board be obligated to refund any

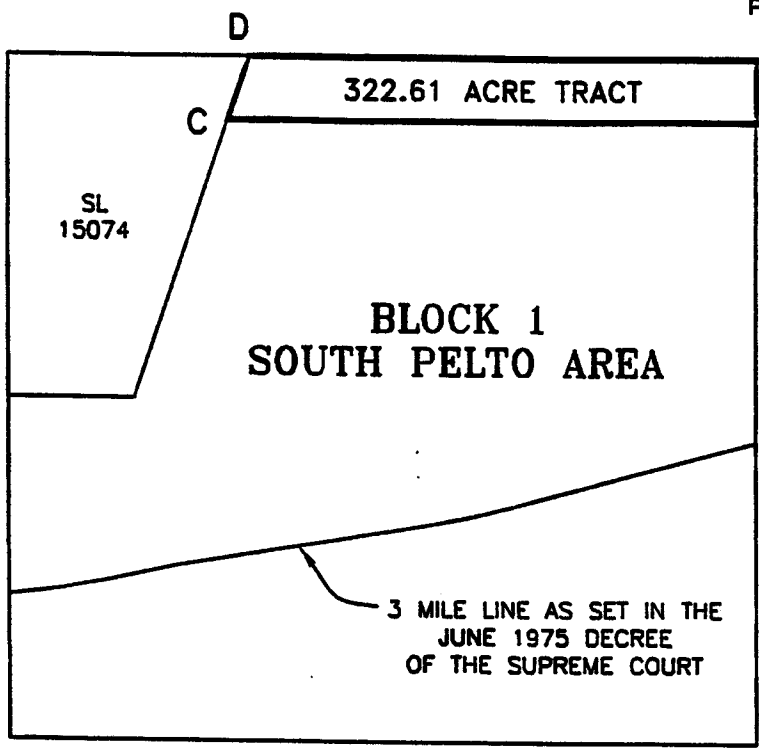
consideration paid by the Lessee prior to such modification, cancellation, or abrogation, including, but not limited to, bonuses, rents and royalties.

NOTE: The State of Louisiana does hereby reserve, and this lease shall be subject to, the imprescriptible right of surface use in the nature of a servitude in favor of the Department of Natural Resources, including its Offices and Commissions, for the sole purpose of implementing, constructing, servicing and maintaining approved coastal zone management and/or restoration projects. Utilization of any and all rights derived under this lease by the mineral lessee, its agents, successors or assigns, shall not interfere with nor hinder the reasonable surface use by the Department of Natural Resources, its Offices or Commissions, as hereinabove reserved.

Applicant: G. K. Grady

Bidder	Cash Payment	Price / Acre	Rental	Oil	Gas	Other

LOUISIANA COORDINATE SYSTEM
(1927 SOUTH ZONE)



TR 33680
322.61 +/- ACS.
AUG. 2001

- NAD 83
- A- X=3482845.46
Y= 189190.75
- NAD 27
- A- X=2202046.02
Y= 128484.76
- B- X=2202046.02
Y= 127184.03
- C- X=2191021.18
Y= 127184.03
- D- X=2191463.09
Y= 128484.76

COURSES

- A-B: SOUTH 1300.73'
- B-C: WEST 11024.84'
- C-D: N18°45'53"E 1373.74'
- D-A: EAST 10582.93'



NOTE: UNLESS OTHERWISE NOTED
COORDINATES ARE BASED ON NAD27.

NOTE:
NAD83 COORDINATES WERE CONVERTED
TO/FROM NAD27 COORDINATES USING THE
CORPSCON SOFTWARE FROM THE U.S.
ARMY TOPOGRAPHIC ENGINEERING CENTER.

NO.	DATE	REVISION
-----	------	----------

322.61 ACRES; AREA OF INTEREST
LOUISIANA STATE MINERAL BOARD OIL & GAS LEASE
BLOCK 1, SOUTH PELTO AREA
GULF OF MEXICO
TERREBONNE PARISH, LOUISIANA

SCALE: 1" = 4000'

TRACT 33681 - PORTION OF BLOCK 1, SOUTH PELTO AREA, Terrebonne Parish, Louisiana

That portion of Block 1, South Pelto Area, Terrebonne Parish, Louisiana, belonging to the State of Louisiana and not under mineral lease on August 8, 2001, described as follows: Beginning at a point on the East line of Block 1, South Pelto Area, having Coordinates of X = 2,202,046.02 and Y = 127,184.03; thence South along the East line of said Block 1 a distance of 6,543.70 feet to a point on the 3 Mile Line as set out in the June, 1975, decree of the Supreme Court, said point having Coordinates of X = 2,202,046.02 and Y = 120,640.33; thence Southwest along the 3 Mile Line the following courses: South 75 degrees 14 minutes 51 seconds West a distance of 5,243.89 feet to a point having Coordinates of X = 2,196,975.00 and Y = 119,305.00; thence along a curve to the right having a radius of 18,240.60 feet and a radius point of X = 2,192,325.86 and Y = 136,943.17 to a point having Coordinates of X = 2,195,302.00 and Y = 118,947.00; thence South 80 degrees 37 minutes 43 seconds West a distance of 5,385.88 feet to a point having Coordinates of X = 2,189,988.00 and Y = 118,070.00; thence South 77 degrees 54 minutes 59 seconds West a distance of 1,423.54 feet to a point having Coordinates of X = 2,188,596.00 and Y = 117,772.00; thence along a curve to the right having a radius of 18,240.60 feet and a radius point coordinate of X = 2,184,789.06 and Y = 135,610.91 to a point having on the West line of said Block 1 having Coordinates of X = 2,186,519.28 and Y = 117,452.56; thence Northerly along said West line of Block 1 a distance of 4,035.74 feet to a point at the Southwest corner of State Lease No. 15074 having Coordinates of X = 2,186,498.73 and Y = 121,488.34; thence East 2,587.39 feet to a point at the Southeast corner of said State Lease No. 15074 having Coordinates of X = 2,189,086.12 and Y = 121,488.34; thence North 18 degrees 45 minutes 53 seconds East along the Southeasterly line of said State Lease No. 15074 a distance of 6,015.43 feet to a point having Coordinates of X = 2,191,021.18 and Y = 127,184.03; thence East a distance of 11,024.84 feet to the point of beginning, containing approximately **2,500.00 acres**, as shown outlined in red on a plat on file in the Office of Mineral Resources, Department of Natural Resources, **LESS AND EXCEPT** that portion thereof, if any, which is more than three nautical miles from the coast line as determined by the Report of the Special Master in the litigation in the Supreme Court of the United States styled United States v. State of Louisiana et al No. 9 Original, said three mile line as set out in the June, 1975, decree of the Supreme Court, as provided by the applicant. All bearings, distances and coordinates are based on Louisiana Coordinate System of 1927 (South Zone).

NOTE: The above description of the tract nominated for lease has been provided exclusively by the party nominating the tract for lease. The Louisiana State Mineral Board makes no representation as to the accuracy of the description of the nominated tract or its suitability for lease. The Louisiana State Mineral Board has made no inspection of the nominated tract for the existence of conflicting leases, operating agreements, private claims or other existing or future obligations or conditions which may affect all or any portion of the nominated tract or its suitability for lease.

Maps depicting the nominated tract, containing the bearings, distances and coordinates of the nominated tract based on the

Louisiana Coordinate System of 1927, North or South Zone, as applicable, are available for public inspection and review at the offices of the Louisiana State Mineral Board from 10:00 a.m. to 3:00 p.m. Monday - Friday.

In the event of conflict between the description of the nominated tract set forth above and the description of the nominated property as contained on the maps maintained at the offices of the Louisiana State Mineral Board, the Louisiana State Mineral Board maps shall prevail and shall provide the final property description of the lease to be awarded of the nominated tract.

Any mineral lease of the nominated tract by the Louisiana State Mineral Board shall be without warranty of any kind, either express, implied, or statutory, including, but not limited to, the implied warranties or merchantability and fitness for a particular purpose. Should the mineral lease of the nominated tract awarded by the Louisiana State Mineral Board be subsequently modified, cancelled or abrogated due to the existence of conflicting leases, operating agreements, private claims or other existing of future obligations or conditions which may affect all or any portion of the leased tract, it shall not relieve the Lessee of the obligation to pay any bonus due thereon to the Louisiana State Mineral Board, nor shall the Louisiana State Mineral Board be obligated to refund any consideration paid by the Lessee prior to such modification, cancellation, or abrogation, including, but not limited to, bonuses, rents and royalties.

NOTE: The State of Louisiana does hereby reserve, and this lease shall be subject to, the imprescriptible right of surface use in the nature of a servitude in favor of the Department of Natural Resources, including its Offices and Commissions, for the sole purpose of implementing, constructing, servicing and maintaining approved coastal zone management and/or restoration projects. Utilization of any and all rights derived under this lease by the mineral lessee, its agents, successors or assigns, shall not interfere with nor hinder the reasonable surface use by the Department of Natural Resources, its Offices or Commissions, as hereinabove reserved.

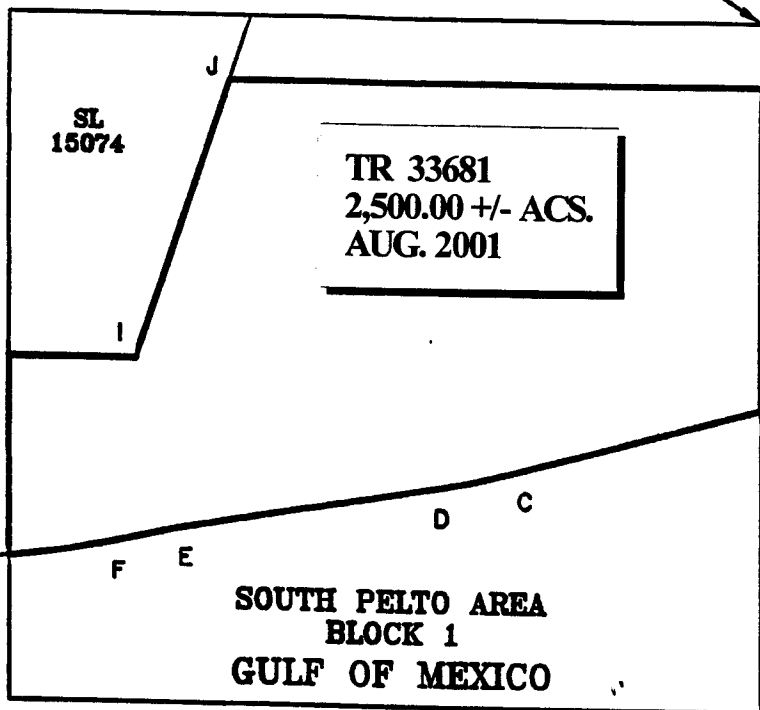
Applicant: G. K. Grady

Bidder	Cash Payment	Price / Acre	Rental	Oil	Gas	Other

LOUISIANA COORDINATE SYSTEM
(1927 SOUTH ZONE)

Y=128484.76'
X=2202046.02'

SOUTH-1300.73'



COURSES:

- A-B SOUTH 6543.70'
- B-C S75°14'51"W 5243.89'
- C-D RADIUS: 18240.60'
- RADIUS POINT:
X=2192325.86
Y=136943.17
- D-E S80°37'43"W 5385.88'
- E-F S77°54'59"W 1423.54'
- F-G RADIUS: 18240.60'
- RADIUS POINT:
X=2184789.06
Y=135610.91
- G-H N00°17'30"W 4035.84'
- H-I EAST 2587.39'
- I-J N18°45'53"E 6015.43'
- J-A EAST 11024.84'

SOUTH PELTO AREA
BLOCK 1
GULF OF MEXICO

3 MILE LINE AS SET
OUT IN THE JUNE, 1975,
DECREE OF THE SUPREME
COURT

NAD 27

NAD 83

A	X=2202046.02	Y=127184.03
B	X=2202046.02	Y=120640.33
C	X=2196975.00	Y=119305.00
D	X=2195302.00	Y=118947.00
E	X=2189988.00	Y=118070.00
F	X=2188596.00	Y=117772.00
G	X=2186519.28	Y=117452.56
H	X=2186498.73	Y=121488.34
I	X=2189086.12	Y=121488.34
J	X=2191021.18	Y=127184.03

A X=3482845.44 Y=187890.02

GRAPHIC SCALE



NOTE: UNLESS OTHERWISE NOTED
COORDINATES ARE BASED ON NAD27.

NOTE:
NAD83 COORDINATES WERE CONVERTED
TO/FROM NAD27 COORDINATES USING THE
CORPSCON SOFTWARE FROM THE U.S.
ARMY TOPOGRAPHIC ENGINEERING CENTER.

NO.	DATE	REVISION
-----	------	----------

2500.00 ACRE TRACT; AREA OF INTEREST
LOUISIANA STATE MINERAL BOARD OIL & GAS LEASE
BLOCK 1, SOUTH PELTO AREA
GULF OF MEXICO
TERREBONNE PARISH, LOUISIANA

SCALE: 1"=4000'

TRACT 33682 - PORTION OF BLOCK 80, WEST DELTA AREA, Plaquemines Parish, Louisiana

That portion of Block 80, West Delta Area, Plaquemines Parish, Louisiana, belonging to the State of Louisiana and not under mineral lease on August 8, 2001, described as follows: Beginning at the Southeast corner of Block 80, West Delta Area, having Coordinates of X = 2,595,027.93 and Y = 102,992.10; thence West 3,281.29 feet on the South line of said Block 80 to a point of intersection with the three mile line as set out in the June, 1975, decree of the Supreme Court; thence Northeasterly approximately 6,125 feet on said three mile to a point of intersection with the East line of said Block 80; thence South 5,163.79 feet on the East line of said Block 80 to the point of beginning, containing approximately **206 acres**, as shown outlined in red on a plat on file in the Office of Mineral Resources, Department of Natural Resources, **LESS AND EXCEPT** that portion thereof, if any, which is more than three nautical miles from the coast line as determined by the Report of the Special Master in the litigation in the Supreme Court of the United States styled United States v. State of Louisiana et al No. 9 Original, said three mile line as set out in the June, 1975, decree of the Supreme Court, as provided by the applicant. All bearings, distances and coordinates are based on Louisiana Coordinate System of 1927 (South Zone).

NOTE: The above description of the tract nominated for lease has been provided exclusively by the party nominating the tract for lease. The Louisiana State Mineral Board makes no representation as to the accuracy of the description of the nominated tract or its suitability for lease. The Louisiana State Mineral Board has made no inspection of the nominated tract for the existence of conflicting leases, operating agreements, private claims or other existing or future obligations or conditions which may affect all or any portion of the nominated tract or its suitability for lease.

Maps depicting the nominated tract, containing the bearings, distances and coordinates of the nominated tract based on the Louisiana Coordinate System of 1927, North or South Zone, as applicable, are available for public inspection and review at the offices of the Louisiana State Mineral Board from 10:00 a.m. to 3:00 p.m. Monday - Friday.

In the event of conflict between the description of the nominated tract set forth above and the description of the nominated property as contained on the maps maintained at the offices of the Louisiana State Mineral Board, the Louisiana State Mineral Board maps shall prevail and shall provide the final property description of the lease to be awarded of the nominated tract.

Any mineral lease of the nominated tract by the Louisiana State Mineral Board shall be without warranty of any kind, either express, implied, or statutory, including, but not limited to, the implied warranties or merchantability and fitness for a particular purpose. Should the mineral lease of the nominated tract awarded by the Louisiana State Mineral Board be subsequently modified, cancelled or abrogated due to the existence of conflicting leases, operating agreements, private claims or other existing of future obligations or conditions which may affect all or any portion of the leased tract, it shall not relieve the Lessee of the obligation to pay any bonus due thereon to the Louisiana State Mineral Board, nor shall the

Louisiana State Mineral Board be obligated to refund any consideration paid by the Lessee prior to such modification, cancellation, or abrogation, including, but not limited to, bonuses, rents and royalties.

NOTE: The State of Louisiana does hereby reserve, and this lease shall be subject to, the imprescriptible right of surface use in the nature of a servitude in favor of the Department of Natural Resources, including its Offices and Commissions, for the sole purpose of implementing, constructing, servicing and maintaining approved coastal zone management and/or restoration projects. Utilization of any and all rights derived under this lease by the mineral lessee, its agents, successors or assigns, shall not interfere with nor hinder the reasonable surface use by the Department of Natural Resources, its Offices or Commissions, as hereinabove reserved.

Applicant: Sheila B. Roy

Bidder	Cash Payment	Price / Acre	Rental	Oil	Gas	Other

WD57

WD56

WD55

SUPREME COURT DECREE
JUNE 1975

WD80

WD81

WD82

LAMBERT GRID NORTH
NAD 1927 LA. S.Z.

TR 33682
206.00 +/- ACS.
AUG. 2001

S.L. 1924

WEST DELTA
AREA

S.L. 2565
S.L. 2566

FEDERAL
STATE

P.O.B.
X= 2,595,027.93'
Y= 102,992.10'

SOUTH PASS
AREA

WD85

WD84

SP41

OPEN

S.L. 13281

PLAQUEMINES PARISH, LOUISIANA



SCALE IN FEET

TRACT 33683 - PORTION OF BLOCK 85, WEST DELTA AREA, Plaquemines Parish, Louisiana

That portion of Block 85, West Delta Area, Plaquemines Parish, Louisiana, belonging to the State of Louisiana and not under mineral lease on August 8, 2001, described as follows: Beginning at a point on the Northeast corner of Block 85, West Delta Area, having Coordinates of X = 2,595,027.93 and Y = 102,992.10; thence South 20,842.10 feet on the East line of said Block 85 to its Southeast corner having Coordinates of X = 2,595,027.93 and Y = 82,150.00; thence West 2,370.99 feet on the South line of said Block 85 to a point of intersection with the three mile line as set out in the June, 1975, decree of the Supreme Court; thence Northerly approximately 22,095 feet on the said three mile line to a point of intersection with the North line of said Block 85; thence Easterly approximately 3,281 feet on the said North line of said Block 85 to the point of beginning, containing approximately **2,370 acres**, as shown outlined in red on a plat on file in the Office of Mineral Resources, Department of Natural Resources, **LESS AND EXCEPT** that portion thereof, if any, which is more than three nautical miles from the coast line as determined by the Report of the Special Master in the litigation in the Supreme Court of the United States styled United States v. State of Louisiana et al No. 9 Original, said three mile line as set out in the June, 1975, decree of the Supreme Court, as provided by the applicant. All bearings, distances and coordinates are based on Louisiana Coordinate System of 1927 (South Zone).

NOTE: The above description of the tract nominated for lease has been provided exclusively by the party nominating the tract for lease. The Louisiana State Mineral Board makes no representation as to the accuracy of the description of the nominated tract or its suitability for lease. The Louisiana State Mineral Board has made no inspection of the nominated tract for the existence of conflicting leases, operating agreements, private claims or other existing or future obligations or conditions which may affect all or any portion of the nominated tract or its suitability for lease.

Maps depicting the nominated tract, containing the bearings, distances and coordinates of the nominated tract based on the Louisiana Coordinate System of 1927, North or South Zone, as applicable, are available for public inspection and review at the offices of the Louisiana State Mineral Board from 10:00 a.m. to 3:00 p.m. Monday - Friday.

In the event of conflict between the description of the nominated tract set forth above and the description of the nominated property as contained on the maps maintained at the offices of the Louisiana State Mineral Board, the Louisiana State Mineral Board maps shall prevail and shall provide the final property description of the lease to be awarded of the nominated tract.

Any mineral lease of the nominated tract by the Louisiana State Mineral Board shall be without warranty of any kind, either express, implied, or statutory, including, but not limited to, the implied warranties or merchantability and fitness for a particular purpose. Should the mineral lease of the nominated tract awarded by the Louisiana State Mineral Board be subsequently modified, cancelled or abrogated due to the existence of conflicting leases, operating agreements, private claims or other existing of future obligations

or conditions which may affect all or any portion of the leased tract, it shall not relieve the Lessee of the obligation to pay any bonus due thereon to the Louisiana State Mineral Board, nor shall the Louisiana State Mineral Board be obligated to refund any consideration paid by the Lessee prior to such modification, cancellation, or abrogation, including, but not limited to, bonuses, rents and royalties.

NOTE: The State of Louisiana does hereby reserve, and this lease shall be subject to, the imprescriptible right of surface use in the nature of a servitude in favor of the Department of Natural Resources, including its Offices and Commissions, for the sole purpose of implementing, constructing, servicing and maintaining approved coastal zone management and/or restoration projects. Utilization of any and all rights derived under this lease by the mineral lessee, its agents, successors or assigns, shall not interfere with nor hinder the reasonable surface use by the Department of Natural Resources, its Offices or Commissions, as hereinabove reserved.

Applicant: Sheila B. Roy

Bidder	Cash Payment	Price / Acre	Rental	Oil	Gas	Other

WD79

WD80

WD81

WD82

P.O.B.

X= 2,595,027.93'

Y= 102,992.10'

USA
LA

WD85

±2,370 ACRES

WD84

SP41

TR 33683
2,370 +/- ACS.
AUG. 2001

WEST DELTA AREA
SOUTH PASS AREA

2700' ZONE VIA

LAMBERT GRID NORTH
NAD 1927 LA. S.Z.

WD86

WD107

WD108

SUPREME
COURT DECREE
JUNE 1975

STATE
FEDERAL

WD109

SP58

PLAQUEMINES PARISH, LOUISIANA



SCALE IN FEET

TRACT 33684 - PORTION OF BLOCK 81, WEST DELTA AREA, Plaquemines Parish, Louisiana

That portion of Block 81, West Delta Area, Plaquemines Parish, Louisiana, belonging to the State of Louisiana and not under mineral lease on August 8, 2001, described as follows: Beginning at the Northeast corner of Block 81, West Delta Area, having Coordinates of X = 2,605,477.93 and Y = 123,834.20; thence South 10,421.05 feet on the East line of said Block 81; thence West 9,232.61 feet to a point of intersection with the three mile line as set out in the June, 1975, decree of the Supreme Court; thence Northeasterly approximately 10,557 feet on said three mile line to a point of intersection with the North line of said Block 81; thence East 8,248.91 feet on the North line of said Block 81 to the point of beginning, containing approximately **2,021 acres**, as shown outlined in red on a plat on file in the Office of Mineral Resources, Department of Natural Resources, **LESS AND EXCEPT** that portion thereof, if any, which is more than three nautical miles from the coast line as determined by the Report of the Special Master in the litigation in the Supreme Court of the United States styled United States v. State of Louisiana et al No. 9 Original, said three mile line as set out in the June, 1975, decree of the Supreme Court, as provided by the applicant. All bearings, distances and coordinates are based on Louisiana Coordinate System of 1927 (South Zone).

NOTE: The above description of the tract nominated for lease has been provided exclusively by the party nominating the tract for lease. The Louisiana State Mineral Board makes no representation as to the accuracy of the description of the nominated tract or its suitability for lease. The Louisiana State Mineral Board has made no inspection of the nominated tract for the existence of conflicting leases, operating agreements, private claims or other existing or future obligations or conditions which may affect all or any portion of the nominated tract or its suitability for lease.

Maps depicting the nominated tract, containing the bearings, distances and coordinates of the nominated tract based on the Louisiana Coordinate System of 1927, North or South Zone, as applicable, are available for public inspection and review at the offices of the Louisiana State Mineral Board from 10:00 a.m. to 3:00 p.m. Monday - Friday.

In the event of conflict between the description of the nominated tract set forth above and the description of the nominated property as contained on the maps maintained at the offices of the Louisiana State Mineral Board, the Louisiana State Mineral Board maps shall prevail and shall provide the final property description of the lease to be awarded of the nominated tract.

Any mineral lease of the nominated tract by the Louisiana State Mineral Board shall be without warranty of any kind, either express, implied, or statutory, including, but not limited to, the implied warranties or merchantability and fitness for a particular purpose. Should the mineral lease of the nominated tract awarded by the Louisiana State Mineral Board be subsequently modified, cancelled or abrogated due to the existence of conflicting leases, operating agreements, private claims or other existing of future obligations or conditions which may affect all or any portion of the leased tract, it shall not relieve the Lessee of the obligation to pay any