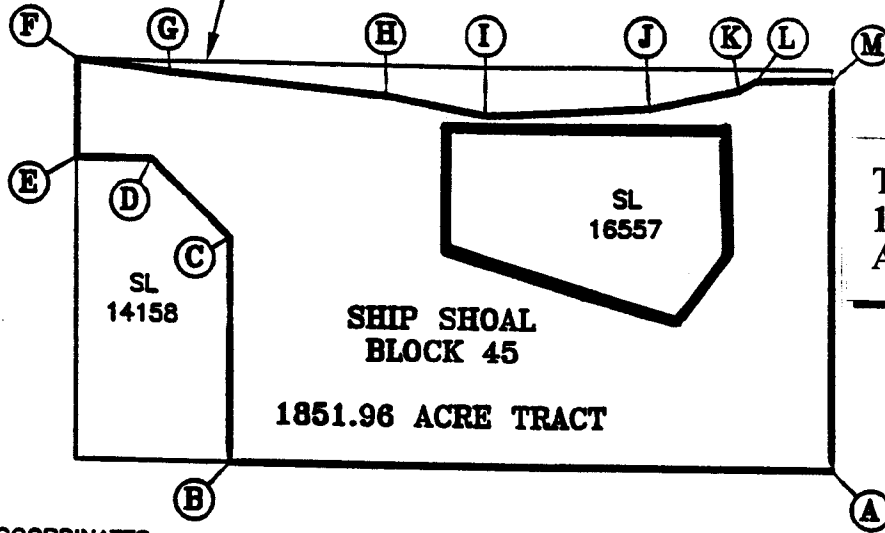


LOUISIANA COORDINATE SYSTEM  
(1927 SOUTH ZONE)

COASTLINE USED TO SET THE  
3 MILE LINE IN THE JUNE 1975  
SUPREME COURT DECREE



TR 33673  
1,851.96 +/- ACS.  
AUG. 2001

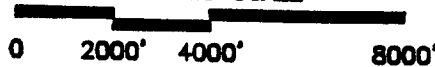
NAD83  
A-Y=188297.88'  
X=3482399.73'

NAD27 COORDINATES

COURSES

A Y=127591.99 X=2171600.00	H Y=132186.43 X=2159200.00	A-B WEST-12400.00'
B Y=127591.99 X=2159200.00	I Y=133757.99 X=2157536.00	B-C NORTH-4594.44'
C Y=133757.99 X=2158000.00	J Y=134922.00 X=2167836.00	C-D N46°38'11"W-2288.82'
D Y=135733.00 X=2156000.00	K Y=135315.00 X=2169680.00	D-E WEST-1536.00'
E Y=135520.96 X=2157920.38	L Y=135500.00 X=2170035.00	E-F NORTH-1975.01'
F Y=135112.00 X=2162430.00	M Y=135530.82 X=2173600.00	F-G S83°41'57"E-1932.05'
G Y=134753.00 X=2164477.00		G-H S84°49'06"E-4528.13'
		H-I S80°03'10"E-2078.24'
		I-J N87°07'11"E-3363.25'
		J-K N77°58'08"E-1885.41'
		K-L N62°28'29"E-400.31'
		L-M N88°52'18"E-1565.30'
		M-A SOUTH-7938.83'

GRAPHIC SCALE



NOTE: UNLESS OTHERWISE NOTED  
COORDINATES ARE BASED ON NAD27.

NOTE:  
NAD83 COORDINATES WERE CONVERTED  
TO/FROM NAD27 COORDINATES USING THE  
CORPSCON SOFTWARE FROM THE U.S.  
ARMY TOPOGRAPHIC ENGINEERING CENTER.

NO.	DATE	REVISION
-----	------	----------

1851.96 ACRES; AREA OF INTEREST  
LOUISIANA STATE MINERAL BOARD OIL & GAS LEASE  
BLOCK 45, SHIP SHOAL AREA  
GULF OF MEXICO  
TERREBONNE PARISH, LOUISIANA

SCALE: 1"=4000'

**TRACT 33674 - PORTION OF BLOCK 66, SHIP SHOAL AREA, Terrebonne Parish, Louisiana**

That portion of Block 66, Ship Shoal Area, Terrebonne Parish, Louisiana, belonging to the State of Louisiana and not under mineral lease on August 8, 2001, described as follows: Beginning at the Northeast corner of Block 66, Ship Shoal Area, having Coordinates of X = 2,171,600.00 and Y = 127,591.99; thence South along the East line of said Block 66 a distance of 875.07 feet to a point having Coordinates of X = 2,171,600.00 and Y = 126,716.92; thence South 89 degrees 55 minutes 33 seconds West a distance of 15,600.01 feet to a point on the West line of said Block 66, said point having Coordinates of X = 2,156,000.00 and Y = 126,696.75; thence North along said West line of Block 66 a distance of 895.24 feet to a point at the Northwest corner of said Block 66, said point having Coordinates of X = 2,156,000.00 and Y = 127,591.99; thence East along the North line of said Block 66 a distance of 15,600.00 feet to the point of beginning, containing approximately **317.00 acres**, as shown outlined in red on a plat on file in the Office of Mineral Resources, Department of Natural Resources, as provided by the applicant. All bearings, distances and coordinates are based on Louisiana Coordinate System of 1927 (South Zone).

NOTE: The above description of the tract nominated for lease has been provided exclusively by the party nominating the tract for lease. The Louisiana State Mineral Board makes no representation as to the accuracy of the description of the nominated tract or its suitability for lease. The Louisiana State Mineral Board has made no inspection of the nominated tract for the existence of conflicting leases, operating agreements, private claims or other existing or future obligations or conditions which may affect all or any portion of the nominated tract or its suitability for lease.

Maps depicting the nominated tract, containing the bearings, distances and coordinates of the nominated tract based on the Louisiana Coordinate System of 1927, North or South Zone, as applicable, are available for public inspection and review at the offices of the Louisiana State Mineral Board from 10:00 a.m. to 3:00 p.m. Monday - Friday.

In the event of conflict between the description of the nominated tract set forth above and the description of the nominated property as contained on the maps maintained at the offices of the Louisiana State Mineral Board, the Louisiana State Mineral Board maps shall prevail and shall provide the final property description of the lease to be awarded of the nominated tract.

Any mineral lease of the nominated tract by the Louisiana State Mineral Board shall be without warranty of any kind, either express, implied, or statutory, including, but not limited to, the implied warranties or merchantability and fitness for a particular purpose. Should the mineral lease of the nominated tract awarded by the Louisiana State Mineral Board be subsequently modified, cancelled or abrogated due to the existence of conflicting leases, operating agreements, private claims or other existing or future obligations or conditions which may affect all or any portion of the leased tract, it shall not relieve the Lessee of the obligation to pay any bonus due thereon to the Louisiana State Mineral Board, nor shall the Louisiana State Mineral Board be obligated to refund any

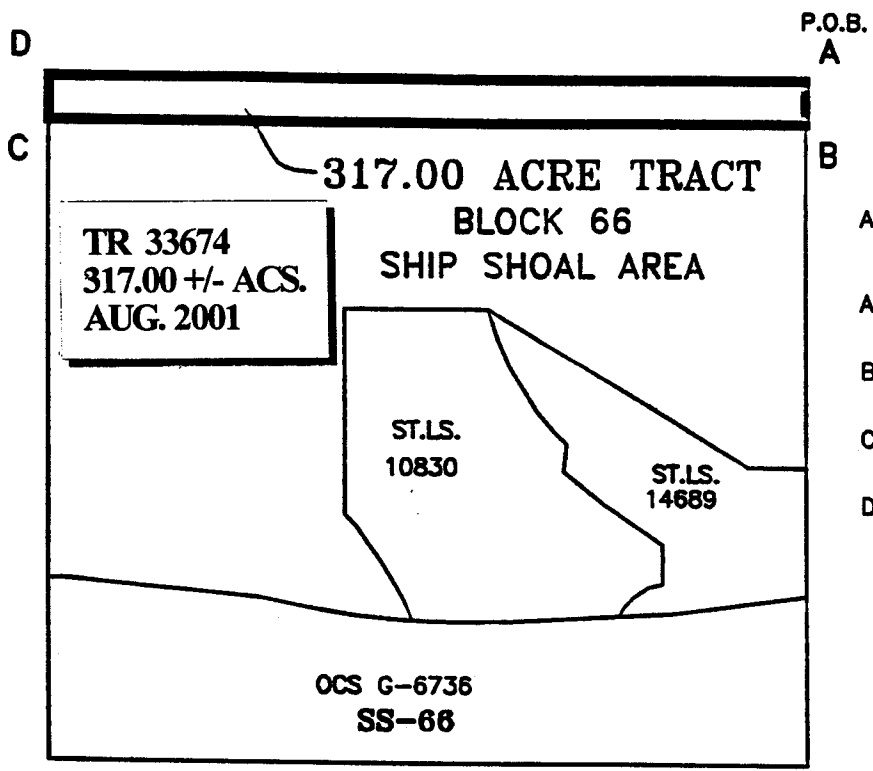
consideration paid by the Lessee prior to such modification, cancellation, or abrogation, including, but not limited to, bonuses, rents and royalties.

NOTE: The State of Louisiana does hereby reserve, and this lease shall be subject to, the imprescriptible right of surface use in the nature of a servitude in favor of the Department of Natural Resources, including its Offices and Commissions, for the sole purpose of implementing, constructing, servicing and maintaining approved coastal zone management and/or restoration projects. Utilization of any and all rights derived under this lease by the mineral lessee, its agents, successors or assigns, shall not interfere with nor hinder the reasonable surface use by the Department of Natural Resources, its Offices or Commissions, as hereinabove reserved.

Applicant: G. K. Grady

Bidder	Cash Payment	Price / Acre	Rental	Oil	Gas	Other

LOUISIANA COORDINATE SYSTEM  
(1927 SOUTH ZONE)

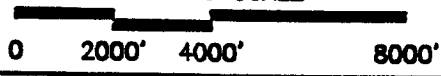


NAD 83  
 A- X=3452399.73  
 Y= 188297.88  
 NAD 27  
 A- X=2171600.00  
 Y= 127591.99  
 B- X=2171600.00  
 Y= 126716.92  
 C- X=2156000.00  
 Y= 126696.75  
 D- X=2156000.00  
 Y= 127591.99

**COURSES**

A-B: SOUTH 875.07'  
 B-C: S89°55'33"W 15600.01'  
 C-D: NORTH 895.24'  
 D-A: EAST 15800.00'

**GRAPHIC SCALE**



NOTE: UNLESS OTHERWISE NOTED  
COORDINATES ARE BASED ON NAD27.

NOTE:  
NAD83 COORDINATES WERE CONVERTED  
TO/FROM NAD27 COORDINATES USING THE  
CORPSCON SOFTWARE FROM THE U.S.  
ARMY TOPOGRAPHIC ENGINEERING CENTER.

NO.	DATE	REVISION
-----	------	----------

--

**317.00 ACRES; AREA OF INTEREST**  
**LOUISIANA STATE MINERAL BOARD OIL & GAS LEASE**  
**BLOCK 66, SHIP SHOAL AREA**  
**GULF OF MEXICO**  
**TERREBONNE PARISH, LOUISIANA**

	SCALE: 1"=4000'
--	-----------------

**TRACT 33675 - PORTION OF BLOCK 66, SHIP SHOAL AREA, Terrebonne Parish, Louisiana**

That portion of Block 66, Ship Shoal Area, Terrebonne Parish, Louisiana, belonging to the State of Louisiana and not under mineral lease on August 8, 2001, described as follows: Beginning at a point on the East line of Block 66, Ship Shoal Area, having Coordinates of X = 2,171,600.00 and Y = 126,716.92; thence South along the East line of said Block 66 a distance of 7,019.48 feet to a point at the Northeast corner of State Lease no. 14689, said point having Coordinates of X = 2,171,600.00 and Y = 119,697.44; thence West along the North line of said State Lease No. 14689 a distance of 1,200.00 feet to a point having Coordinates of X = 2,170,400.00 and Y = 119,697.44; thence North 59 degrees 15 minutes 07 seconds West along the Northeasterly line of said State Lease No. 14689 a distance of 6,248.36 feet to the Northwest corner of said State Lease No. 14689, also being the Northeast corner of State Lease No. 10830, said point having Coordinates of X = 2,165,030.00 and Y = 122,891.99; thence Easterly, Southerly and Southeasterly along the line of said State Lease No. 10830 the following courses: West a distance of 2,948.75 feet to a point having Coordinates of X = 2,162,081.25 and Y = 122,891.99; thence South a distance of 4,192.32 feet to a point having Coordinates of X = 2,162,081.25 and Y = 118,699.67; thence South 46 degrees 09 minutes 36 seconds East a distance of 317.15 feet to a point having Coordinates of X = 2,162,310.00 and Y = 118,480.00; thence South 35 degrees 05 minutes 02 seconds East a distance of 904.70 feet to a point having Coordinates of X = 2,162,830.00 and Y = 117,739.68; thence South 30 degrees 57 minutes 50 seconds East a distance of 583.10 feet to a point having Coordinates of X = 2,163,130.00 and Y = 117,239.67; thence South 27 degrees 53 minutes 50 seconds East a distance of 384.71 feet to a point having Coordinates of X = 2,163,310.00 and Y = 116,899.67; thence South 21 degrees 20 minutes 22 seconds East a distance of 385.10 feet to a point on the 3 Mile Line as set out in the June, 1975, Supreme Court decree having Coordinates of X = 2,163,450.10 and Y = 116,541.06; thence along said 3 Mile Line along a curve to the right having a radius of 18,240.60 feet and a radius point coordinate of X = 2,164,478.86 and Y = 134,752.63 to a point having Coordinates of X = 2,160,352.00 and Y = 116,985.00; thence North 84 degrees 49 minutes 01 seconds West along said 3 Mile Line a distance of 4,095.75 feet to a point having Coordinates of X = 2,156,273.00 and Y = 117,355.00; thence along said 3 Mile Line along a curve to the right having a radius of 18,240.60 feet and a radius point coordinate of X = 2,155,349.50 and Y = 135,572.21 to a point on the West line of said Block 66 having Coordinates of X = 2,156,000.00 and Y = 117,343.31; thence North along the West line of said Block 66 a distance of 9,353.54 feet to a point having Coordinates of X = 2,156,000.00 and Y = 126,696.75; thence North 89 degrees 55 minutes 33 seconds East a distance of 15,600.01 feet to the point of beginning, containing approximately **2,500.00 acres**, as shown outlined in red on a plat on file in the Office of Mineral Resources, Department of Natural Resources, **LESS AND EXCEPT** that portion thereof, if any, which is more than three nautical miles from the coast line as determined by the Report of the Special Master in the litigation in the Supreme Court of the United States styled United States v. State of Louisiana et al No. 9 Original, said three mile line as set out in the June, 1975, decree of the Supreme Court, as provided by the applicant. All bearings, distances and coordinates are based on Louisiana Coordinate System of 1927 (South Zone).

NOTE: The above description of the tract nominated for lease has been provided exclusively by the party nominating the tract for lease. The Louisiana State Mineral Board makes no representation as to the accuracy of the description of the nominated tract or its suitability for lease. The Louisiana State Mineral Board has made no inspection of the nominated tract for the existence of conflicting leases, operating agreements, private claims or other existing or future obligations or conditions which may affect all or any portion of the nominated tract or its suitability for lease.

Maps depicting the nominated tract, containing the bearings, distances and coordinates of the nominated tract based on the Louisiana Coordinate System of 1927, North or South Zone, as applicable, are available for public inspection and review at the offices of the Louisiana State Mineral Board from 10:00 a.m. to 3:00 p.m. Monday - Friday.

In the event of conflict between the description of the nominated tract set forth above and the description of the nominated property as contained on the maps maintained at the offices of the Louisiana State Mineral Board, the Louisiana State Mineral Board maps shall prevail and shall provide the final property description of the lease to be awarded of the nominated tract.

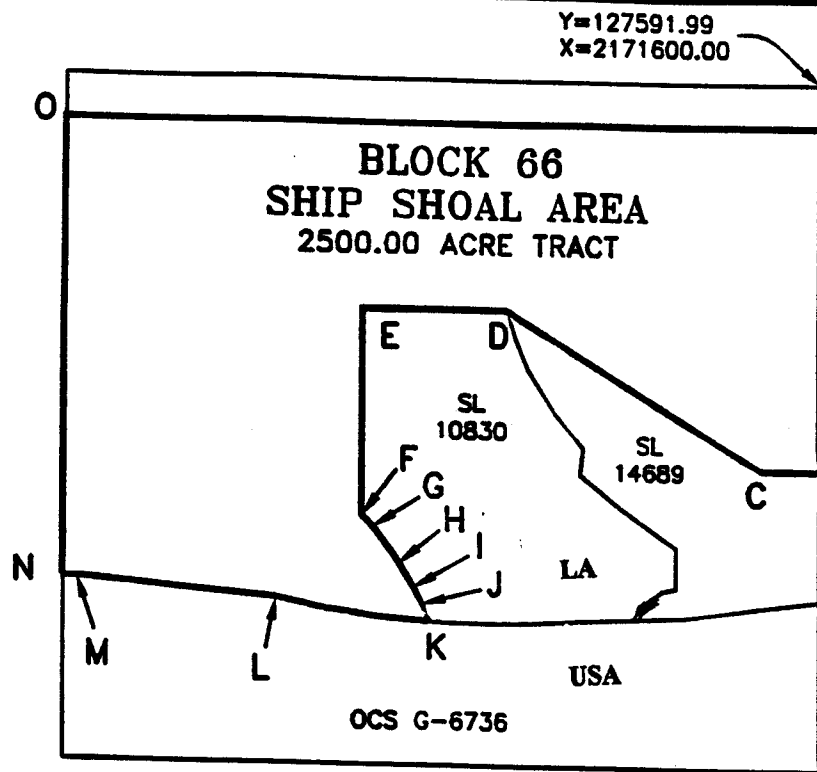
Any mineral lease of the nominated tract by the Louisiana State Mineral Board shall be without warranty of any kind, either express, implied, or statutory, including, but not limited to, the implied warranties or merchantability and fitness for a particular purpose. Should the mineral lease of the nominated tract awarded by the Louisiana State Mineral Board be subsequently modified, cancelled or abrogated due to the existence of conflicting leases, operating agreements, private claims or other existing of future obligations or conditions which may affect all or any portion of the leased tract, it shall not relieve the Lessee of the obligation to pay any bonus due thereon to the Louisiana State Mineral Board, nor shall the Louisiana State Mineral Board be obligated to refund any consideration paid by the Lessee prior to such modification, cancellation, or abrogation, including, but not limited to, bonuses, rents and royalties.

NOTE: The State of Louisiana does hereby reserve, and this lease shall be subject to, the imprescriptible right of surface use in the nature of a servitude in favor of the Department of Natural Resources, including its Offices and Commissions, for the sole purpose of implementing, constructing, servicing and maintaining approved coastal zone management and/or restoration projects. Utilization of any and all rights derived under this lease by the mineral lessee, its agents, successors or assigns, shall not interfere with nor hinder the reasonable surface use by the Department of Natural Resources, its Offices or Commissions, as hereinabove reserved.

Applicant: G. K. Grady

Bidder	Cash Payment	Price / Acre	Rental	Oil	Gas	Other

LOUISIANA COORDINATE SYSTEM  
(1927 SOUTH ZONE)

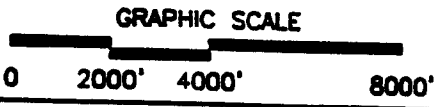


	SOUTH	875.07'
	Y=127591.99	X=2171600.00
	NAD 83	
A-	X=3452399.72	Y= 187422.82
	NAD 27	
A-	X=2171600.00	Y= 126716.92
B-	X=2171600.00	Y= 119697.44
C-	X=2170400.00	Y= 119697.44
D-	X=2165030.00	Y= 122891.99
E-	X=2162081.25	Y= 122891.99
F-	X=2162081.25	Y= 118699.67
G-	X=2162310.00	Y= 118480.00
H-	X=2162830.00	Y= 117739.68
I-	X=2163130.00	Y= 117239.67
J-	X=2163310.00	Y= 116899.67
K-	X=2163450.10	Y= 116541.06
L-	X=2160352.00	Y= 116985.00
M-	X=2156273.00	Y= 117355.00
N-	X=2156000.00	Y= 117343.21
O-	X=215600.00	Y= 126696.75

**COURSES**

A-B:	SOUTH 7019.48'	K-L:	RADIUS: 18240.60'
B-C:	WEST 1200.00'		RADIUS POINT:
C-D:	N59°15'07"W 6248.36'		X=2164478.86
D-E:	WEST 2948.75'		Y= 134752.63
E-F:	SOUTH 4192.32'	L-M:	N84°49'01"W 4095.75'
F-G:	S46°09'36"E 317.15'	M-N:	RADIUS: 18240.60'
G-H:	S35°05'02" 904.70'		RADIUS POINT:
H-I:	S30°57'50"E 583.10'		X=2155349.50
I-J:	S27°53'50"E 384.71'		Y= 135572.21
J-K:	S21°20'22"E 385.01'	N-O:	NORTH 9353.54'
		O-A:	N89°55'33" 15600.01'

**TR 33675**  
**2,500.00 +/- ACS.**  
**AUG. 2001**



NOTE: UNLESS OTHERWISE NOTED  
 COORDINATES ARE BASED ON NAD27.

NOTE:  
 NAD83 COORDINATES WERE CONVERTED  
 TO/FROM NAD27 COORDINATES USING THE  
 CORPSCON SOFTWARE FROM THE U.S.  
 ARMY TOPOGRAPHIC ENGINEERING CENTER.

NO.	DATE	REVISION

**2500.00 ACRES; AREA OF INTEREST**  
**LOUISIANA STATE MINERAL BOARD OIL & GAS LEASE**  
**BLOCK 66, SHIP SHOAL AREA**  
**GULF OF MEXICO**  
**TERREBONNE PARISH, LOUISIANA**

SCALE: 1" = 4000'



**TRACT 33676 - PORTION OF BLOCK 43, SHIP SHOAL AREA, Terrebonne Parish, Louisiana**

That portion of Block 43, Ship Shoal Area, Terrebonne Parish, Louisiana, belonging to the State of Louisiana and not under mineral lease on August 8, 2001, described as follows: Beginning at a the Southwest corner of Block 43, Ship Shoal Area, having Coordinates of X = 2,171,600.00 and Y = 130,197.44; thence North along the West line of said Block 43 a distance of 5,333.38 feet to a point on the coastline used to set the 3 Mile Line in the June, 1975, decree of the Supreme Court, said point having Coordinates of X = 2,171,600.00 and Y = 135,530.82; thence Northeasterly and Southeasterly along said coastline the following courses: North 88 degrees 52 minutes 19 seconds East a distance of 8,338.62 feet to a point having Coordinates of X = 2,179,937.00 and Y = 135,695.00; thence South 71 degrees 25 minutes 10 seconds East a distance of 746.93 feet to a point having Coordinates of X = 2,180,645.00 and Y = 135,457.00; thence South 86 degrees 39 minutes 04 seconds East a distance of 1,523.60 feet to a point having Coordinates of X = 2,182,166.00 and Y = 135,368.00; thence North 76 degrees 09 minutes 38 seconds East a distance of 1,199.83 feet to a point having Coordinates of X = 2,183,331.00 and Y = 135,655.00; thence South 88 degrees 16 minutes 05 seconds East a distance of 1,458.73 feet to a point having Coordinates of X = 2,184,789.06 and Y = 135,610.91; thence North 77 degrees 56 minutes 16 seconds East a distance of 1,672.90 feet to a point on the East line of said Block 43, said point having Coordinates of X = 2,186,425.03 and Y = 135,960.50; thence South 00 degrees 17 minutes 30 seconds East along the East line of said Block 43 a distance of 5,763.13 feet to a point at the Southeast corner of said Block 43 having Coordinates of X = 2,186,454.40 and Y = 130,197.44; thence West along the South line of Block 43 a distance of 1,847.40 feet to a point at the Southeast corner of State Lease No. 16558, said point having Coordinates of X = 2,184,607.00 and Y = 130,197.44; thence along the lines of State Lease No. 16558 the following courses: North a distance of 2,914.45 feet to a point having Coordinates of X = 2,184,607.00 and Y = 133,111.89; thence West a distance of 669.24 feet to a point having Coordinates of X = 2,183,937.76 and Y = 133,111.89; thence North a distance of 1,788.11 feet to a point having Coordinates of X = 2,183,937.76 and Y = 134,900.00; thence West a distance of 3,787.76 feet to a point having Coordinates of X = 2,180,150.00 and Y = 134,900.00; thence South a distance of 4,702.56 feet to a point at the Southwest corner of State Lease No. 16558 and being on the South line of said Block 43, said point having Coordinates of X = 2,180,150.00 and Y = 130,197.44; thence West along the South line of said Block 43 a distance of 8,550.00 feet to the point of beginning, containing approximately 1,388.18 acres, as shown outlined in red on a plat on file in the Office of Mineral Resources, Department of Natural Resources, as provided by the applicant. All bearings, distances and coordinates are based on Louisiana Coordinate System of 1927 (South Zone).

NOTE: The above description of the tract nominated for lease has been provided exclusively by the party nominating the tract for lease. The Louisiana State Mineral Board makes no representation as to the accuracy of the description of the nominated tract or its suitability for lease. The Louisiana State Mineral Board has made no inspection of the nominated tract for the existence of conflicting leases, operating agreements, private claims or other existing or future obligations or conditions which may affect all or any portion of the

nominated tract or its suitability for lease.

Maps depicting the nominated tract, containing the bearings, distances and coordinates of the nominated tract based on the Louisiana Coordinate System of 1927, North or South Zone, as applicable, are available for public inspection and review at the offices of the Louisiana State Mineral Board from 10:00 a.m. to 3:00 p.m. Monday - Friday.

In the event of conflict between the description of the nominated tract set forth above and the description of the nominated property as contained on the maps maintained at the offices of the Louisiana State Mineral Board, the Louisiana State Mineral Board maps shall prevail and shall provide the final property description of the lease to be awarded of the nominated tract.

Any mineral lease of the nominated tract by the Louisiana State Mineral Board shall be without warranty of any kind, either express, implied, or statutory, including, but not limited to, the implied warranties or merchantability and fitness for a particular purpose. Should the mineral lease of the nominated tract awarded by the Louisiana State Mineral Board be subsequently modified, cancelled or abrogated due to the existence of conflicting leases, operating agreements, private claims or other existing or future obligations or conditions which may affect all or any portion of the leased tract, it shall not relieve the Lessee of the obligation to pay any bonus due thereon to the Louisiana State Mineral Board, nor shall the Louisiana State Mineral Board be obligated to refund any consideration paid by the Lessee prior to such modification, cancellation, or abrogation, including, but not limited to, bonuses, rents and royalties.

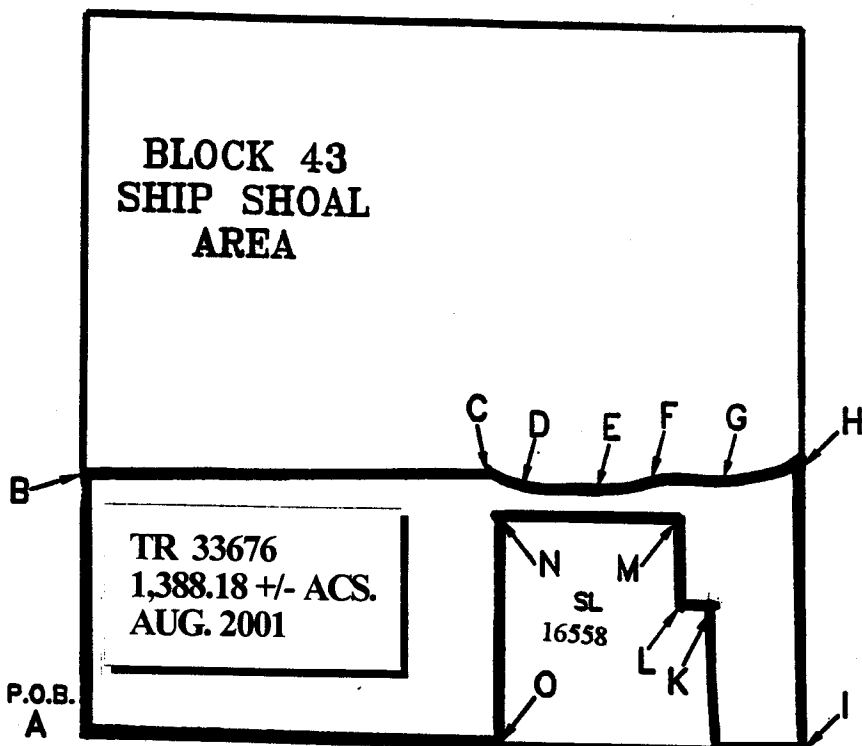
NOTE: The State of Louisiana does hereby reserve, and this lease shall be subject to, the imprescriptible right of surface use in the nature of a servitude in favor of the Department of Natural Resources, including its Offices and Commissions, for the sole purpose of implementing, constructing, servicing and maintaining approved coastal zone management and/or restoration projects. Utilization of any and all rights derived under this lease by the mineral lessee, its agents, successors or assigns, shall not interfere with nor hinder the reasonable surface use by the Department of Natural Resources, its Offices or Commissions, as hereinabove reserved.

Applicant: G. K. Grady

Bidder	Cash Payment	Price / Acre	Rental	Oil	Gas	Other

LOUISIANA COORDINATE SYSTEM  
(1927 SOUTH ZONE)

**BLOCK 43  
SHIP SHOAL  
AREA**

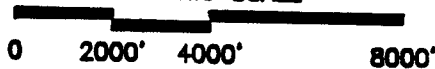


- NAD 83
- A- X=3452399.76  
Y= 190903.31
- NAD 27
- A- X=2171600.00  
Y= 130197.44
- B- X=2171600.00  
Y= 135530.82
- C- X=2179937.00  
Y= 135695.00
- D- X=2180645.00  
Y= 135457.00
- E- X=2182166.00  
Y= 135368.00
- F- X=2183331.00  
Y= 135655.00
- G- X=2184789.06  
Y= 135610.91
- H- X=2186425.03  
Y= 135960.50
- I- X=2186454.40  
Y= 130197.44
- J- X=2184607.00  
Y= 130197.44
- K- X=2184607.00  
Y= 133111.89
- L- X=2183937.76  
Y= 133111.89
- M- X=2183937.76  
Y= 134900.00
- N- X=2180150.00  
Y= 134900.00
- O- X=2180150.00  
Y= 130197.44

**COURSES**

A-B:	NORTH	5333.38'	J-K:	NORTH	2914.45'
B-C:	N 88°52'19" E	8338.62'	K-L:	WEST	669.24'
C-D:	S 71°25'10" E	746.93'	L-M:	NORTH	1788.11'
D-E:	S 86°39'04" E	1523.60'	M-N:	WEST	3787.76'
E-F:	N 76°09'38" E	1199.83'	N-O:	SOUTH	4702.56'
F-G:	S 88°16'05" E	1458.73'	O-A:	WEST	8550.00'
G-H:	N 77°56'16" E	1672.90'			
H-I:	S 00°17'30" E	5763.13'			
I-J:	EAST	1847.40'			

GRAPHIC SCALE



NOTE: UNLESS OTHERWISE NOTED  
COORDINATES ARE BASED ON NAD27.

NOTE:  
NAD83 COORDINATES WERE CONVERTED  
TO/FROM NAD27 COORDINATES USING THE  
CORPSCON SOFTWARE FROM THE U.S.  
ARMY TOPOGRAPHIC ENGINEERING CENTER.

NO.	DATE	REVISION
-----	------	----------

1388.18 ACRES; AREA OF INTEREST  
LOUISIANA STATE MINERAL BOARD OIL & GAS LEASE  
BLOCK 43, SHIP SHOAL AREA  
GULF OF MEXICO  
TERREBONNE PARISH, LOUISIANA

SCALE: 1" = 4000'

**TRACT 33677 - PORTION OF BLOCK 67, SHIP SHOAL AREA, Terrebonne Parish, Louisiana**

That portion of Block 67, Ship Shoal Area, Terrebonne Parish, Louisiana, belonging to the State of Louisiana and not under mineral lease on August 8, 2001, described as follows: Beginning at the Northwest corner of Block 67, Ship Shoal Area, having Coordinates of X = 2,171,600.00 and Y = 130,197.44; thence East along the North line of said Block 67 a distance of 14,854.40 feet to a point at the Northeast corner of said Block 67, said point having Coordinates of X = 2,186,454.40 and Y = 130,197.44; thence Southerly along the East line of said Block 67 a distance of 512.69 feet to a point at the Northerly corner of State Lease No. 15904, said point having Coordinates of X = 2,186,456.98 and Y = 129,684.76; thence South 30 degrees 32 minutes 04 seconds West along the Northwesterly line of said State Lease No. 15904 a distance of 3,950.61 feet to a point having Coordinates of X = 2,184,449.85 and Y = 126,282.01; thence West a distance of 12,849.85 feet to a point on the West line of Block 67, said point having Coordinates of X = 2,171,600.00 and Y = 126,282.01; thence North along the West line of said Block 67 a distance of 3,915.43 feet to the point of beginning, containing approximately **1,257.02 acres**, as shown outlined in red on a plat on file in the Office of Mineral Resources, Department of Natural Resources, as provided by the applicant. All bearings, distances and coordinates are based on Louisiana Coordinate System of 1927 (South Zone).

NOTE: The above description of the tract nominated for lease has been provided exclusively by the party nominating the tract for lease. The Louisiana State Mineral Board makes no representation as to the accuracy of the description of the nominated tract or its suitability for lease. The Louisiana State Mineral Board has made no inspection of the nominated tract for the existence of conflicting leases, operating agreements, private claims or other existing or future obligations or conditions which may affect all or any portion of the nominated tract or its suitability for lease.

Maps depicting the nominated tract, containing the bearings, distances and coordinates of the nominated tract based on the Louisiana Coordinate System of 1927, North or South Zone, as applicable, are available for public inspection and review at the offices of the Louisiana State Mineral Board from 10:00 a.m. to 3:00 p.m. Monday - Friday.

In the event of conflict between the description of the nominated tract set forth above and the description of the nominated property as contained on the maps maintained at the offices of the Louisiana State Mineral Board, the Louisiana State Mineral Board maps shall prevail and shall provide the final property description of the lease to be awarded of the nominated tract.

Any mineral lease of the nominated tract by the Louisiana State Mineral Board shall be without warranty of any kind, either express, implied, or statutory, including, but not limited to, the implied warranties or merchantability and fitness for a particular purpose. Should the mineral lease of the nominated tract awarded by the Louisiana State Mineral Board be subsequently modified, cancelled or abrogated due to the existence of conflicting leases, operating agreements, private claims or other existing of future obligations or conditions which may affect all or any portion of the leased

tract, it shall not relieve the Lessee of the obligation to pay any bonus due thereon to the Louisiana State Mineral Board, nor shall the Louisiana State Mineral Board be obligated to refund any consideration paid by the Lessee prior to such modification, cancellation, or abrogation, including, but not limited to, bonuses, rents and royalties.

NOTE: The State of Louisiana does hereby reserve, and this lease shall be subject to, the imprescriptible right of surface use in the nature of a servitude in favor of the Department of Natural Resources, including its Offices and Commissions, for the sole purpose of implementing, constructing, servicing and maintaining approved coastal zone management and/or restoration projects. Utilization of any and all rights derived under this lease by the mineral lessee, its agents, successors or assigns, shall not interfere with nor hinder the reasonable surface use by the Department of Natural Resources, its Offices or Commissions, as hereinabove reserved.

Applicant: G. K. Grady

Bidder	Cash Payment	Price / Acre	Rental	Oil	Gas	Other

# GULF OF MEXICO

P.O.B.  
 NAD 27  
 Y= 130197.44  
 X= 2171600.00  
 NAD 83  
 Y= 190903.31  
 X= 3452399.76

NORTH  
 3915.43'

EAST  
 14854.40'

Y=130197.44  
 X=2186454.40

SHIP SHOAL AREA  
 BLOCK 67

S00°17'20"E  
 512.69'

1257.02 ACRE TRACT

Y=129684.76  
 X=2186456.98

WEST  
 12849.85'

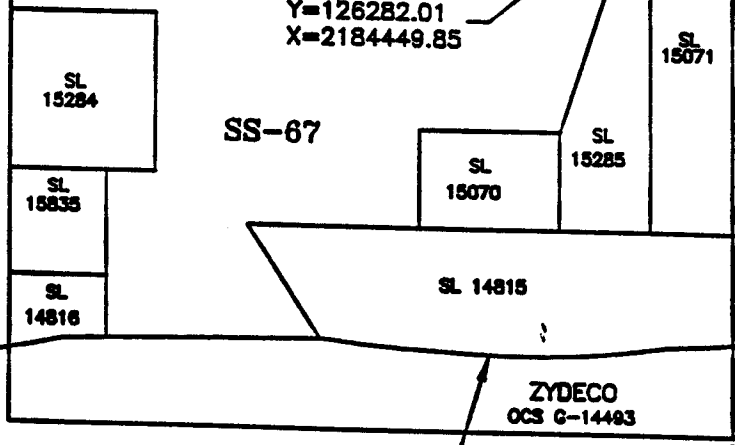
S30°32'04"W  
 3950.61'

Y=126282.01  
 X=2171600.00

Y=126282.01  
 X=2184449.85

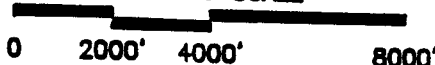
LOUISIANA COORDINATE SYSTEM  
 (1927 SOUTH ZONE)

TR 33677  
 1,257.02 +/- ACS.  
 AUG. 2001



3 MILE LINE AS SET  
 OUT IN THE JUNE, 1975,  
 DECREE OF SUPREME  
 COURT

GRAPHIC SCALE



NOTE: UNLESS OTHERWISE NOTED  
 COORDINATES ARE BASED ON NAD27.

NOTE:  
 NAD83 COORDINATES WERE CONVERTED  
 TO/FROM NAD27 COORDINATES USING THE  
 CORPSCON SOFTWARE FROM THE U.S.  
 ARMY TOPOGRAPHIC ENGINEERING CENTER.

REVISION

1257.02 ACRES; AREA OF INTEREST  
 LOUISIANA STATE MINERAL BOARD OIL & GAS LEASE  
 BLOCK 67, SHIP SHOAL AREA  
 GULF OF MEXICO  
 TERREBONNE PARISH, LOUISIANA

SCALE: 1"=4000'

**TRACT 33678 - PORTION OF BLOCK 67, SHIP SHOAL AREA, Terrebonne Parish, Louisiana**

That portion of Block 67, Ship Shoal Area, Terrebonne Parish, Louisiana, belonging to the State of Louisiana and not under mineral lease on August 8, 2001, described as follows: Beginning at a point on the West line of Block 67, Ship Shoal Area, having Coordinates of X = 2,171,600.00 and Y = 126,282.01; thence East a distance of 12,849.85 feet to a point on the Northwesterly line of State Lease No. 15904, said point having Coordinates of X = 2,184,449.85 and Y = 126,282.01; thence South 30 degrees 32 minutes 04 seconds West along said Northwesterly line of State Lease No. 15904 a distance of 98.12 feet to a point at the Southwest corner of said State Lease No. 15904, said point having Coordinates of X = 2,184,400.00 and Y = 126,197.49; thence North 89 degrees 59 minutes 54 seconds East along the South line of said State Lease No. 15904 a distance of 374.73 feet to a point at the Northwest corner of State Lease No. 15071, said point having Coordinates of X = 2,184,774.73 and Y = 129,197.50; thence South 00 degrees 17 minutes 30 seconds East along the West line of said State Lease No. 15071 a distance of 6,500.14 feet to a point at the Southwest corner of said State Lease No. 15071, said point having Coordinates of X = 2,184,807.82 and Y = 119,697.44; thence East along the South line of said State Lease No. 15071 a distance of 1,700.03 feet to a point at the Southwest corner of said State Lease No. 15071, and being on the East line of said Block 67, said point having Coordinates of X = 2,186,507.85 and Y = 119,967.44; thence South 00 degrees 17 minutes 30 seconds East along the East line of said Block 67 a distance of 2,244.91 feet to a point at the intersection of said East line and the 3 Mile Line as set out in the June, 1975, decree of the Supreme Court, said point having Coordinates of X = 2,186,519.28 and Y = 117,452.56; the Northwesterly and Southwesterly along said 3 Mile Line the following courses: Southwesterly along a curve to the right having a radius of 18,240.60 feet and a radius point coordinate of X = 2,184,789.06 and Y = 135,610.91 to a point having a Coordinate of X = 2,185,156.00 and Y = 117,374.00; thence Southwesterly along a curve to the right having a radius of 18,240.60 feet and a radius point coordinate of X = 2,182,168.46 and Y = 135,368.28 to a point having Coordinates of X = 2,181,100.00 and Y = 117,159.00; thence North 86 degrees 39 minutes 04 seconds West a distance of 1,523.60 feet to a point having Coordinates of X = 2,179,579.00 and Y = 117,248.00; thence Northwesterly along a curve to the right having a radius of 18,240.60 feet and a radius point coordinate of X = 2,180,637.11 and Y = 135,457.88 to a point having Coordinates of X = 2,177,979.00 and Y = 117,412.00; thence South 88 degrees 52 minutes 17 seconds West a distance of 5,280.02 feet to a point having Coordinates of X = 2,172,700.00 and Y = 117,308.00; thence South 77 degrees 59 minutes 23 seconds West a distance of 1,124.62 feet to a point on the West line of said Block 67, said point having Coordinates of X = 2,171,600.00 and Y = 117,073.98; thence North along the West line of said Block 67 a distance of 1,497.79 feet to the Southwest corner of State Lease No. 15835, said point having Coordinates of X = 2,171,600.00 and Y = 118,571.77; thence East along the South line of said State Lease No. 15835 a distance of 2,000.00 feet to the Southeast corner of said State Lease no. 15835, said point having Coordinates of X = 2,173,600.00 and Y = 118,571.77; thence North along the West line of said State Lease No. 15835 a distance of 2,152.21 feet to the Northeast corner of said State Lease No. 15835 and also being on the South line of State Lease No. 15284, said point having Coordinates of X = 2,173,600.00 and Y = 120,723.98; thence East

along said South line of State Lease No. 15284 a distance of 1,000.00 feet to the Southeast corner of said State Lease No. 15284, said point having Coordinates of X = 2,174,600.00 and Y = 120,723.98; thence North along the East line of said State Lease No. 15284 a distance of 3,200.00 feet to the Northeast corner of said State Lease No. 15284, said point having Coordinates of X = 2,174,600.00 and Y = 123,923.98; thence East along the North line of said State Lease No. 15284 a distance of 3,000.00 feet to a point at the Northwest corner of said State Lease No. 15284, said point also being on the West line of said Block 67 and having Coordinates of X = 2,171,600.00 and Y = 123,923.98; thence North along the West line of said Block 67 a distance of 2,358.03 feet to the point of beginning, containing approximately 2,500.00 acres, as shown outlined in red on a plat on file in the Office of Mineral Resources, Department of Natural Resources, **LESS AND EXCEPT** that portion thereof, if any, which is more than three nautical miles from the coast line as determined by the Report of the Special Master in the litigation in the Supreme Court of the United States styled United States v. State of Louisiana et al No. 9 Original, said three mile line as set out in the June, 1975, decree of the Supreme Court, as provided by the applicant. All bearings, distances and coordinates are based on Louisiana Coordinate System of 1927 (South Zone).

NOTE: The above description of the tract nominated for lease has been provided exclusively by the party nominating the tract for lease. The Louisiana State Mineral Board makes no representation as to the accuracy of the description of the nominated tract or its suitability for lease. The Louisiana State Mineral Board has made no inspection of the nominated tract for the existence of conflicting leases, operating agreements, private claims or other existing or future obligations or conditions which may affect all or any portion of the nominated tract or its suitability for lease.

Maps depicting the nominated tract, containing the bearings, distances and coordinates of the nominated tract based on the Louisiana Coordinate System of 1927, North or South Zone, as applicable, are available for public inspection and review at the offices of the Louisiana State Mineral Board from 10:00 a.m. to 3:00 p.m. Monday - Friday.

In the event of conflict between the description of the nominated tract set forth above and the description of the nominated property as contained on the maps maintained at the offices of the Louisiana State Mineral Board, the Louisiana State Mineral Board maps shall prevail and shall provide the final property description of the lease to be awarded of the nominated tract.

Any mineral lease of the nominated tract by the Louisiana State Mineral Board shall be without warranty of any kind, either express, implied, or statutory, including, but not limited to, the implied warranties or merchantability and fitness for a particular purpose. Should the mineral lease of the nominated tract awarded by the Louisiana State Mineral Board be subsequently modified, cancelled or abrogated due to the existence of conflicting leases, operating agreements, private claims or other existing of future obligations or conditions which may affect all or any portion of the leased tract, it shall not relieve the Lessee of the obligation to pay any bonus due thereon to the Louisiana State Mineral Board, nor shall the



Louisiana State Mineral Board be obligated to refund any consideration paid by the Lessee prior to such modification, cancellation, or abrogation, including, but not limited to, bonuses, rents and royalties.

NOTE: The State of Louisiana does hereby reserve, and this lease shall be subject to, the imprescriptible right of surface use in the nature of a servitude in favor of the Department of Natural Resources, including its Offices and Commissions, for the sole purpose of implementing, constructing, servicing and maintaining approved coastal zone management and/or restoration projects. Utilization of any and all rights derived under this lease by the mineral lessee, its agents, successors or assigns, shall not interfere with nor hinder the reasonable surface use by the Department of Natural Resources, its Offices or Commissions, as hereinabove reserved.

Applicant: G. K. Grady

Bidder	Cash Payment	Price / Acre	Rental	Oil	Gas	Other